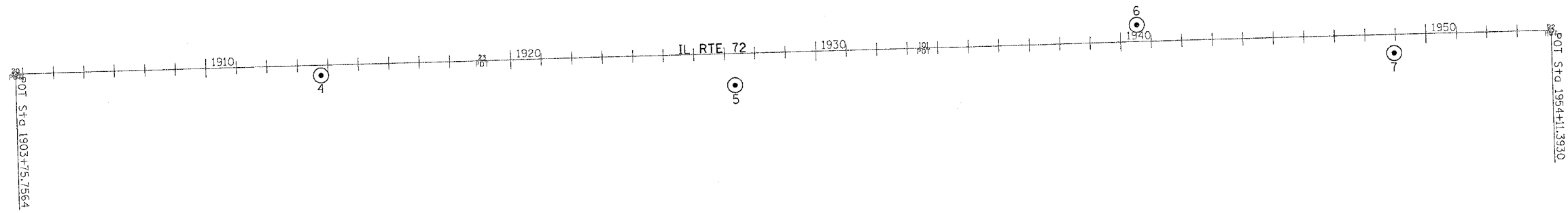


HORIZONTAL & VERTICAL CONTROL

F.A. RTE.	SECTION	COUNTY	TOTAL SHEETS	SHEET NO.
553	120RS-3	OGLE	145	31
STA.		TO STA.		
FED. ROAD DIST. NO.		ILLINOIS FED. AID PROJECT		



SURVEY WORK POINTS

POINT	NORTH	EAST	ELEVATION	CHAIN	STATION	OFFSET	DESCRIPTION
120	1982823.9400	2606956.3150	0.0000	IL72	1933+61.74	1548.2073' LT	

BENCH MARKS

POINT	NORTH	EAST	ELEVATION	CHAIN	STATION	OFFSET	DESCRIPTION
404	1981288.6310	2604856.4630	773.0830	IL72	1912+20.25	71.5354' LT	MISC. CONCRETE SLAB, CHISELED SQUARE
405	1981204.3020	2606344.5830	778.6440	IL72	1927+05.47	53.9004' RT	SIGN FOUNDATION, CHISELED SQUARE
406	1981359.5510	2607690.3100	789.4500	IL72	1940+54.97	64.0867' LT	CROSS CUT, LIGHT POLE
407	1981393.5090	2608532.8940	802.0070	IL72	1948+98.17	74.7385' LT	ROW MARKER, TOP

HORIZONTAL CONTROL POINTS

POINT	NORTH	EAST	ELEVATION	CHAIN	STATION	OFFSET	DESCRIPTION
4	1981188.0740	2605016.0400	772.2880	IL72	1913+76.98	33.3947' RT	GPS CONTROL POINT, PIN
5	1981154.5280	2606373.7060	783.5150	IL72	1927+33.20	104.4605' RT	GPS CONTROL POINT, PIN
6	1981350.6210	2607689.6110	789.8040	IL72	1940+54.03	55.1794' LT	GPS CONTROL POINT, PIN
7	1981258.4750	2608532.9910	799.5310	IL72	1948+94.54	60.2466' RT	GPS CONTROL POINT, PIN

REFERENCE TIES

POINT	CHAIN	STATION	OFFSET	DESCRIPTION
500	IL72	1913+64.42	73.8808' RT	POWER POLE, SHINER
501	IL72	1913+74.89	73.9592' RT	WARNING SIGN, SHINER
502	IL72	1914+32.99	47.1001' RT	CMP, DRILL HOLE
503	IL72	1926+15.75	110.0135' RT	POWER POLE WITH TRANSFORMER, SHINER
504	IL72	1927+85.35	113.4156' RT	POWER POLE WITH TRANSFORMER, CHISELED SQUARE
505	IL72	1949+94.40	71.9168' RT	POWER POLE, SHINER
506	IL72	1948+41.58	71.9339' RT	POWER POLE, SHINER
507	IL72	1948+85.03	48.0821' RT	CMP, DRILL HOLE
509	IL72	1940+49.50	90.8973' LT	SIGN, SHINER
510	IL72	1941+13.78	105.7048' LT	SIGN, SHINER
511	IL72	1939+69.97	60.3202' LT	SIGN, SHINER

Chain IL72 contains:
20 22

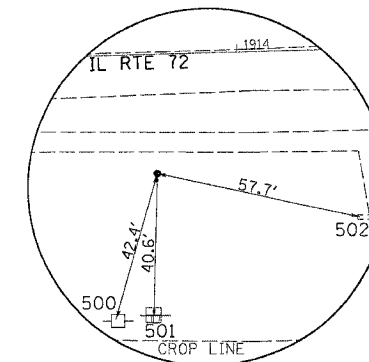
Beginning chain IL72 description

Point 20 N 1,981,193.7770 E 2,604,014.2710 Sta 1903+75.76

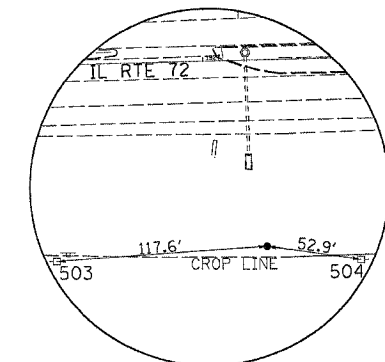
Course from 20 to 22 88° 24' 57.0900" Dist 5,035.6366'

Point 22 N 1,981,332.9870 E 2,609,047.9830 Sta 1954+11.39

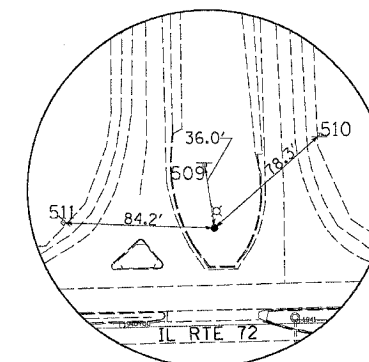
Ending chain IL72 description



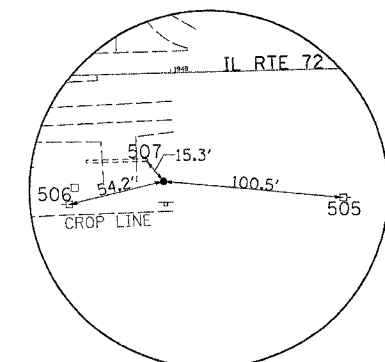
HORIZONTAL CONTROL POINT No. 4



HORIZONTAL CONTROL POINT No. 5



HORIZONTAL CONTROL POINT No. 6



HORIZONTAL CONTROL POINT No. 7