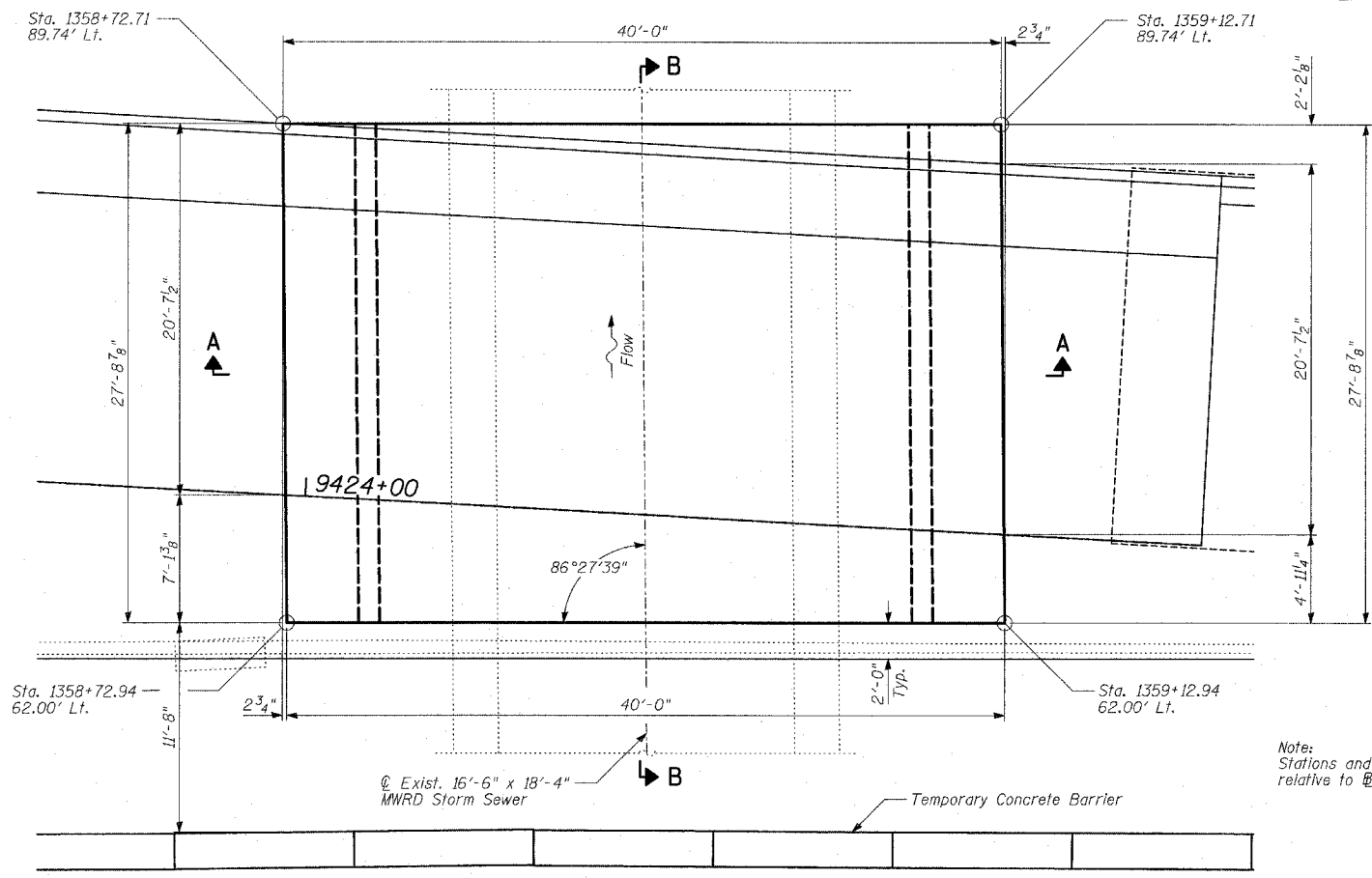
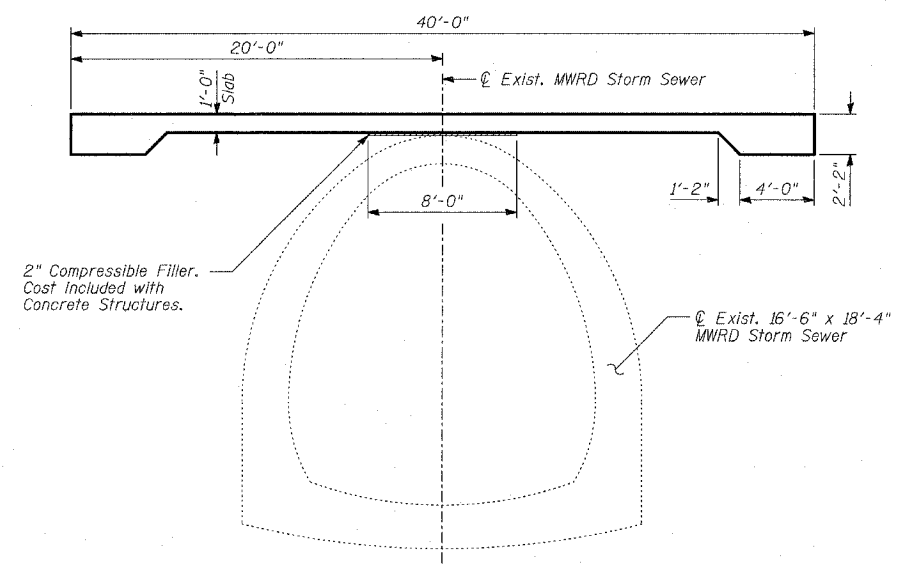


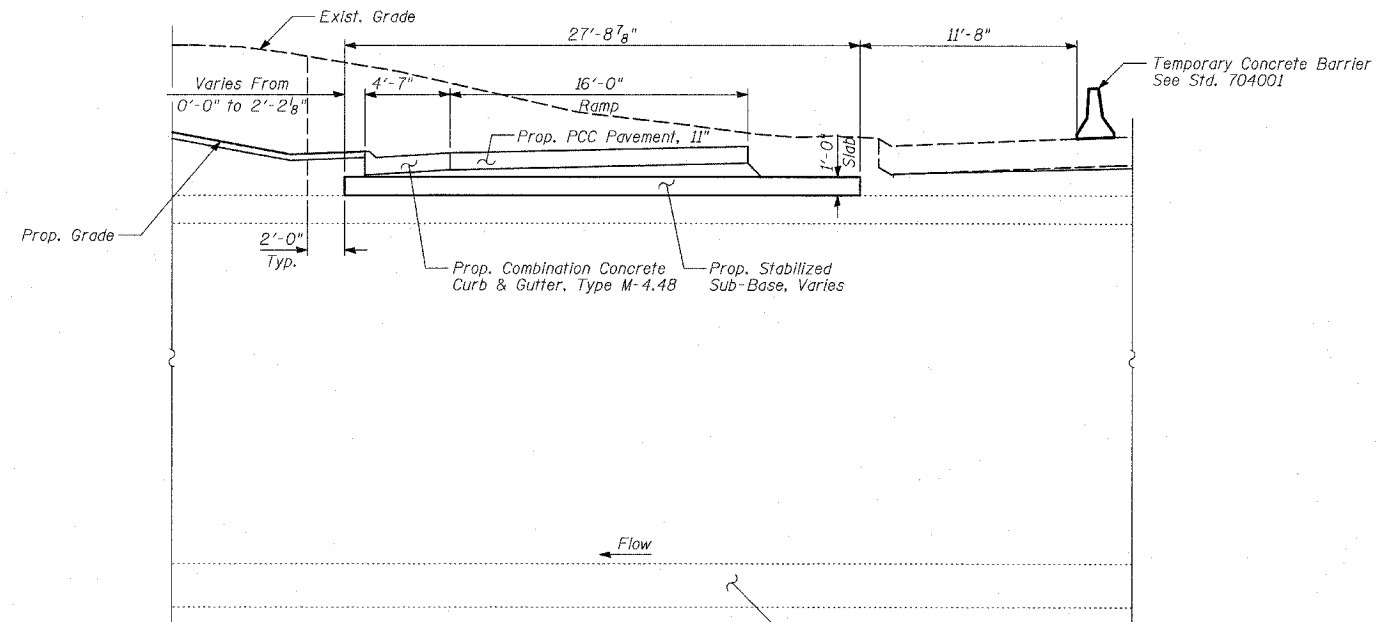
F.A.I. RTE. 94	SECTION *	COUNTY COOK	TOTAL SHEETS 907	SHEET NO. 726
STA. 1200+00.00		TO STA. 1365+00		
FED. ROAD DIST. NO. ILLINOIS		FED. AID PROJECT		
(1516.1, 1717 & 1818) R-9				62695



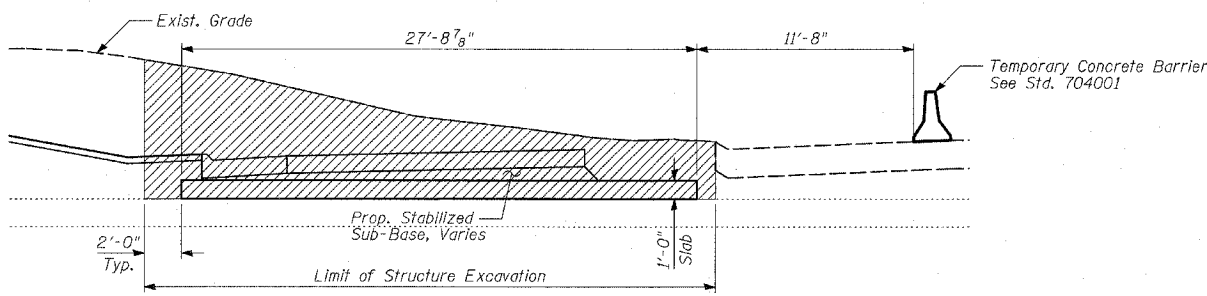
PLAN



SECTION A-A



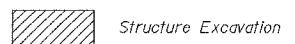
SECTION B-B



LIMITS OF STRUCTURAL EXCAVATION

- NOTES:**
- Reinforcement bars shall conform to the requirements of AASHTO M31 or M322 Grade 60.
 - Plan dimensions and details relative to existing structure have been taken from existing plans and are subject to nominal construction variations. It shall be the Contractor's responsibility to verify such dimensions and details in the field and make necessary approved adjustments prior to construction or ordering of materials. Such variations shall not be cause for additional compensation for a change in the scope of the work; however, the Contractor will be paid for the quantity actually finished at the unit price bid for the work.
 - All exposed concrete edges shall be chamfered 3/4" except as noted.
 - All elevations shown are based on the Chicago City Datum of 0.00, which is 579.19 feet above mean tide New York. (NAVD 88)
 - It is the Contractor's responsibility to locate existing utilities, especially the existing MWRD Storm Sewer. Any repairs due to damage of the storm sewer shall be the Contractor's responsibility.
 - For Earth Excavation, see Roadway Plans

LEGEND



DESIGN SPECIFICATION

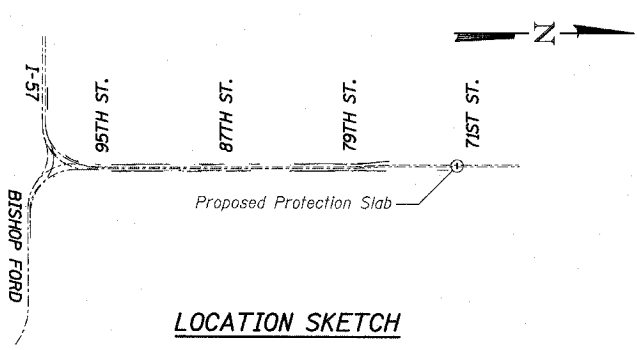
AASHTO 2002 Standard Specifications for Highway Bridges

DESIGN STRESSES

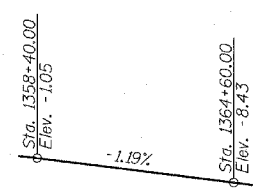
f'c = 3,500 psi
fy = 60,000 psi (Reinforcement)

TOTAL BILL OF MATERIAL

ITEM	UNIT	TOTAL
Concrete Structures	CU YD	53
Reinforcement Bars, Epoxy Coated	POUND	11,690
Structure Excavation	CU YD	260



LOCATION SKETCH



PROFILE GRADE
(S.B. I-94)



Signed *Phillip D. Frey*
Phillip D. Frey, S.E., No. 081-004826, Expires 11-30-2006.
Date 3/25/05

REVISIONS	NAME	DATE

ILLINOIS DEPARTMENT OF TRANSPORTATION
F.A.I. 94 (DAN RYAN EXPRESSWAY)
SADDLE FOR EXISTING 16'-6" x 18'-4" MWRD STORM SEWER

S.N. DESIGNED BY:
SCALE: DRAWN BY: DJR
DATE: MARCH 25, 2005 CHECKED BY: TD

TYLIN INTERNATIONAL