

CONTRACT NO. 62030

F.A.P. RTE.	SECTION	COUNTY	TOTAL SHEETS	SHEET NO.
337	20 WRS-6	LAKE	318	101
STA. 10+750		TO STA. 11+100		
FED. ROAD DIST. NO.		ILLINOIS FED. AID PROJECT		

FINAL SURVEY PLOTTED
NOTE BOOK TEMPLATE AREAS CHECKED

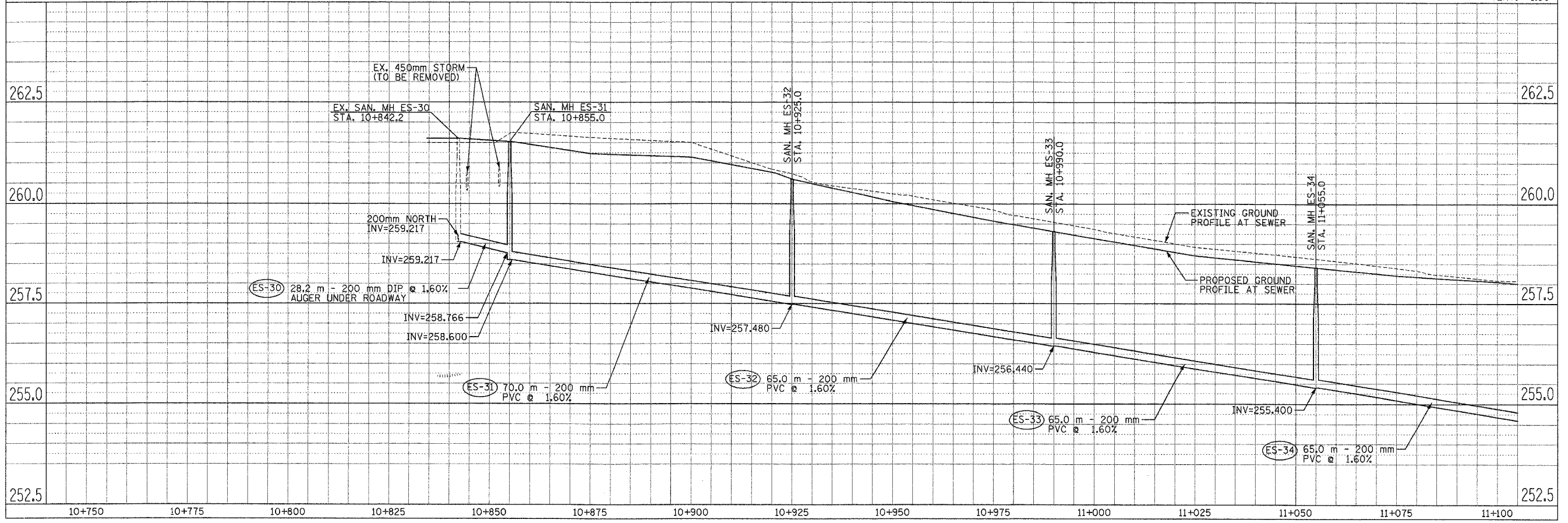
BY: _____ DATE: _____

GRAEF, ANHALT, SCHLOEMER & ASSOCIATES, INC.
ENGINEERS & SCIENTISTS
8501 W. Higgins Road, Suite 280
Chicago, Illinois 60631
(773) 399-0112

SCALE:
HORIZ. 1:500
VERT. 1:50

ORIGINAL SURVEY PLOTTED
NOTE BOOK TEMPLATE AREAS CHECKED

BY: _____ DATE: _____



SANITARY SEWER RELOCATION PROFILE IL. RTE. 22 STA. 10+750 TO STA. 11+100