

STATE OF ILLINOIS
DEPARTMENT OF TRANSPORTATION

F.A.I. RTE.	SECTION	COUNTY	TOTAL SHEETS	SHEET NO.
70	82-5VB-BJR-1	ST. CLAIR	21	1
ILLINOIS CONTRACT NO. 76R93				

FOR INDEX OF SHEETS, SEE SHEET NO. 2

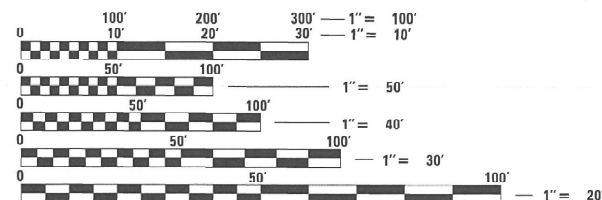
PROPOSED
HIGHWAY PLANS

FAI ROUTE 70 (I-55 / I-70)
SECTION 82-5VB-BJR-1
PROJECT NHPP-12TI(805)
I-55 / 70 OVER B&O BRIDGE REPAIR
ST. CLAIR COUNTY

C-98-058-23



FUNCTIONAL CLASSIFICATION: INTERSTATE
2021 ADT: 67,300 (ACTUAL)
2024 ADT: 68,900 (ESTIMATED)
2044 ADT: 80,800 (ESTIMATED)
MU%: 13.1%
SU%: 3.3%

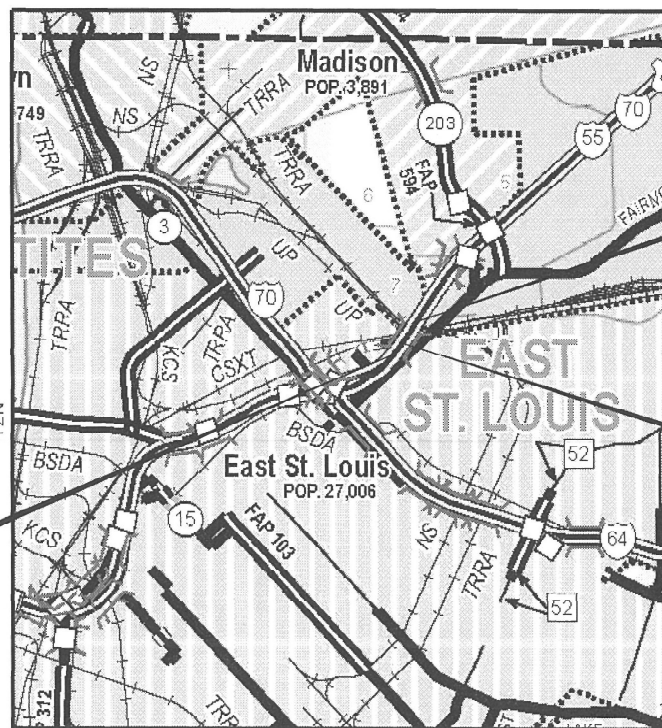


FULL SIZE PLANS HAVE BEEN PREPARED USING STANDARD
ENGINEERING SCALES. REDUCED SIZED PLANS WILL NOT
CONFORM TO STANDARD SCALES. IN MAKING MEASUREMENTS
ON REDUCED PLANS, THE ABOVE SCALES MAY BE USED.

J.U.L.I.E.
JOINT UTILITY LOCATION INFORMATION FOR EXCAVATORS
1-800-892-0123
OR 811

PROJECT ENGINEER BILLIE OWEN
PROJECT MANAGER MEIWU AN

CONTRACT NO. 76R93



LOCATION MAP

BEGIN IMPROVEMENTS
ALONG I-55/I-70
STA 72+64.13
LAT: 38.636206°
LONG: -90.137536°

END IMPROVEMENTS
ALONG I-55/I-70
STA. 89+82.16
LAT: 38.639886°
LONG: -90.134431°

BRIDGE IMPROVEMENT
SN 082-0017

GROSS LENGTH = 1,718.03 FT. = 0.325 MILE
NET LENGTH = 1,718.03 FT. = 0.325 MILE

STATE OF ILLINOIS
DEPARTMENT OF TRANSPORTATION

SUBMITTED MARCH 23 2023
Kirk H. Brown
REGIONAL ENGINEER

May 12, 2023 [Signature]
ENGINEER OF DESIGN AND ENVIRONMENT

May 12, 2023 [Signature]
DIRECTOR OF HIGHWAYS PROJECT IMPLEMENTATION

PRINTED BY THE AUTHORITY
OF THE STATE OF ILLINOIS

INDEX OF SHEETS

1. COVER SHEET
2. INDEX OF SHEETS, HIGHWAY STANDARDS, GENERAL NOTES AND COMMITMENTS
3. SUMMARY OF QUANTITIES
4. SCHEDULE OF QUANTITIES
- 5-19. INTERSTATE WEEKEND CLOSURE, SPECIAL
- 20-21. BRIDGE PLANS

HIGHWAY STANDARDS

- 000001-08 STANDARD SYMBOLS, ABBREVIATIONS, AND PATTERNS
- 701400-11 APPROACH TO LANE CLOSURE, FREEWAY / EXPRESSWAY
- 701401-13 LANE CLOSURE, FREEWAY / EXPRESSWAY
- 701428-01 TRAFFIC CONTROL SETUP AND REMOVAL FREEWAY / EXPRESSWAY
- 701446-11 TWO LANE CLOSURE, FREEWAY / EXPRESSWAY
- 701451-05 RAMP CLOSURE, FREEWAY / EXPRESSWAY
- 701901-08 TRAFFIC CONTROL DEVICES
- 001006 DECIMAL OF AN INCH AND OF A FOOT
- 701411-09 LANE CLOSURE, MULTILANE, AT ENTRANCE OR EXIT RAMP, FOR SPEEDS
>= 45 MPH
- 780001-05 TYPICAL PAVEMENT MARKINGS

GENERAL NOTES

1. UTILITIES KNOWN TO HAVE FACILITIES WITHIN THE PROJECT AREA:

	AERIAL	BURIED
AMEREN ILLINOIS	X	X
AT&T ILLINOIS	X	X
BLUEBIRD NETWORK	X	X
CHARTER COMMUNICATIONS, INC.	X	X
CITY OF EAST ST. LOUIS (SANITARY SEWER)		X
CITY OF EAST ST. LOUIS (LIGHTING)	X	X
EVERSTREAM GLC HOLDING COMPANY LLC	X	X
ILLINOIS AMERICAN WATER COMPANY		X
LEVEL 3 COMMUNICATIONS, LLC	X	X
VERIZON BUSINESS	X	X
ZAYO GROUP	X	X

2. THE DEPARTMENT STRONGLY ENCOURAGES THE PRIME CONTRACTOR AND THEIR APPROVED SUB-CONTRACTORS TO HIRE MINORITY, WOMEN AND DISADVANTAGED INDIVIDUALS FROM ITS FEDERALLY FUNDED HIGHWAY CONSTRUCTION CAREERS TRAINING PROGRAM (HCCTP) TO HELP MEET WORKFORCE AND TRAINEE GOALS. THIS PROGRAM IS TRAINING MINORITIES, WOMEN AND DISADVANTAGED INDIVIDUALS IN HIGHWAY CONSTRUCTION-RELATED SKILLS, E.G., MATH FOR THE TRADES, JOB READINESS, TECHNICAL SKILLS COURSEWORK (CARPENTRY, CONCRETE FLATWORK, BLUEPRINT READING, SITE PLANS, SITE WORK, TOOLS USE, ETC.) AND OSHA 10 HOUR CERTIFICATION, TO PREPARE THEM FOR A CAREER IN THE HIGHWAY CONSTRUCTION TRADES. GRADUATES ARE WELL-TRAINED AND READY TO BECOME PRODUCTIVE ENTRY-LEVEL CONSTRUCTION WORKERS. CONTACT THE DISTRICT 8 EEO OFFICE AT 618-346-3360 AND/OR THE HCCTP COORDINATOR AT 618-874-6528 TO LEARN MORE ABOUT THE PROGRAM AND FOR ASSISTANCE IN MEETING WORKFORCE AND TRAINEE GOALS.
3. THE CONTRACTOR SHALL NOTIFY THE ENGINEER THREE WEEKS IN ADVANCE OF EACH INTERSTATE WEEKEND DIRECTIONAL CLOSURE. THE CONTRACTOR IS REQUIRED TO ALSO NOTIFY THE RESIDENT ENGINEER 72 HOURS IN ADVANCE OF THE PLACEMENT OF ANY TRAFFIC CONTROL DEVICES.

COMMITMENTS

NONE

REV. - MS

MODEL - Default
FILE NAME - p:\w\dot-sw.bentley.com-EN\DOT\Documents\DOT_Offices\District 8\Projects\0876893\CADD\data\CAD\sheet\0876893-sht-general_notes.dgn

	USER NAME = Nathan.Cox	DESIGNED -	REVISED -	STATE OF ILLINOIS DEPARTMENT OF TRANSPORTATION	INDEX OF SHEETS, HIGHWAY STANDARDS, GENERAL NOTES AND COMMITMENTS				F.A.I. RTE.	SECTION	COUNTY	TOTAL SHEETS	SHEET NO.
		DRAWN -	REVISED -						70	82-5VB-BJR-1	ST. CLAIR	21	2
	PLOT SCALE = 2.0000 ' / in.	CHECKED -	REVISED -		CONTRACT NO. 76R93								
	PLOT DATE = 3/22/2023	DATE -	REVISED -										
					SCALE:	SHEET 1	OF 1	SHEETS	STA.	TO STA.			

PAVEMENT MARKING SCHEDULE

LOCATION			LENGTH	LANE	DESCRIPTION	PREFORMED PLASTIC PAVEMENT MARKING, TYPE D - LINE			GROOVING FOR RECESSED PAVEMENT MARKING			PAVEMENT MARKING REMOVAL - GRINDING
						6"	8"	9"*	7"	9"	10"	
STA.	TO	STA.	FOOT			FOOT	FOOT	FOOT	FOOT	FOOT	FOOT	SQFT
EB I - 55 / 70												
73+33	TO	89+82	1649	1	YELLOW EDGE LINE	1649			1649			825
73+45	TO	89+82	1637	1 & 2	WHITE SKIP DASH - 10'			409			409	307
73+57	TO	89+82	1625	2 & 3	WHITE SKIP DASH - 10'			406			406	305
73+69	TO	89+82	1613	3 & 4	WHITE SKIP DASH - 2'			403			403	302
73+81	TO	89+82	1601	4	WHITE EDGE LINE	1601			1601			801
WB I - 55 / 70												
73+33	TO	89+82	1649	1	YELLOW EDGE LINE	1649			1649			825
73+21	TO	89+82	1661	1 & 2	WHITE SKIP DASH - 10'			415			415	311
73+09	TO	78+66	557	2 & 3	SOLID WHITE LANE LINE		557			557		371
78+66	TO	86+44	778	2 & 3	WHITE SKIP DASH - 2'			195			195	146
86+44	TO	89+82	338	2 & 3	WHITE SKIP DASH - 10'			85			85	64
72+97	TO	89+82	1685	3 & 4	WHITE SKIP DASH - 10'			421			421	316
72+85	TO	89+82	1697	4	WHITE EDGE LINE	1697			1697			849
SUB TOTAL						6596	557	2334	6596	557	2334	5422
TOTAL						6596	557	2334	6596	557	2334	5422













* 9" PAVEMENT MARKING SHALL CONSIST OF 6" STRIPE PLUS 3" CONTRAST

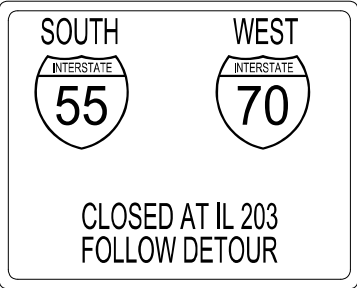
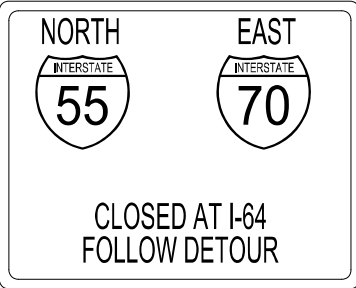
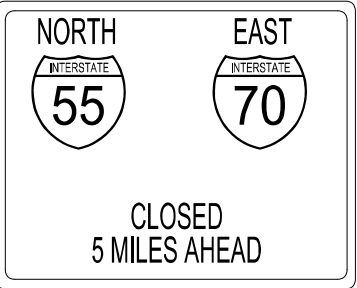




REV. - MS

MODEL: Default
FILE NAME: p:\mids\dw\entrevy.com\p\mids\DOT\Documents\DOT_Offices\Dirctc_8\Projects\087603\CAD\Drawn\CA08heest087603-shl-schedule.dgn

	USER NAME = Nathan.Cox	DESIGNED -	REVISED -	STATE OF ILLINOIS DEPARTMENT OF TRANSPORTATION	SCHEDULE OF QUANTITIES			F.A.I. RTE.	SECTION	COUNTY	TOTAL SHEETS	SHEET NO.
		DRAWN -	REVISED -					70	82-5VB-BJR-1	ST. CLAIR	21	4
	PLOT SCALE = 100.0000' / in.	CHECKED -	REVISED -					CONTRACT NO. 76R93				
	PLOT DATE = 3/23/2023	DATE -	REVISED -		SCALE:	SHEET	OF	SHEETS	STA.	TO STA.	ILLINOIS FED. AID PROJECT	

Model - Default
FILE NAME: s:\mldet-schedule.dgn
PROJECT: D:\DOT\Documents\DOT - Office\Dirlet - 8\Project\087693\CADD\01\087693-01-Stage - detour - signing - schedule.dgn

												
SHEET # OF 15	M6-1-(0)-21-15 ARROW LT	M6-1-(0)-21-15 ARROW RT	M6-2-(0)-21-15 ARROW DIAGONAL RT	M6-2-(0)-21-15 ARROW DIAGONAL LT	M6-3-(0)-21-15 ARROW UP	M4-8-(0)-30-15 DETOUR	M3-1-(0)-24-12 NORTH	M3-2-(0)-24-12 EAST	M3-3-(0)-24-12 SOUTH	M3-4-(0)-24-12 WEST	M1-1-24-24 I-55	M1-1-24-24 I-70
4	3	2			3	8	8	8			8	8
5			4			4	4	4			4	4
6			4		4	8	8	8			8	8
7			2			2	2	2			2	2
8			4	2	2	8			8	8	8	8
9	1	1			1	3			3	3	3	3
10			2			2			2	2	2	2
11												
12	2	2			2	6			6	6	6	6
13			2	2		4			4	4	4	4
TOTAL	6	5	18	4	12	45	22	22	23	23	45	45

							
SHEET # OF 15	(0)-90-72 S55 W70 CLOSED	(0)-90-72 N55 E70 CLOSED	(0)-90-72 N55 E70 CLOSED 5 MILES	W20-2-(0)-48-48 DETOUR AHEAD	M4-8A-(0)-24-18 END DETOUR	E5-3-(0)-48-36 EXIT ONLY	E5-2A-(0)-48-36 EXIT CLOSED
4		5		5			
5		4		4		3	2
6		2	2	2			
7					1		
8	5			5			
9	3			2			
10							
11					2		
12	4			4			
13	5			3		4	1
TOTAL	16	11	2	24	3	7	3

NOTE:
ALL SIGNS SHALL BE PROVIDED
INSTALLED, AND REMOVED
BY THE CONTRACTOR.

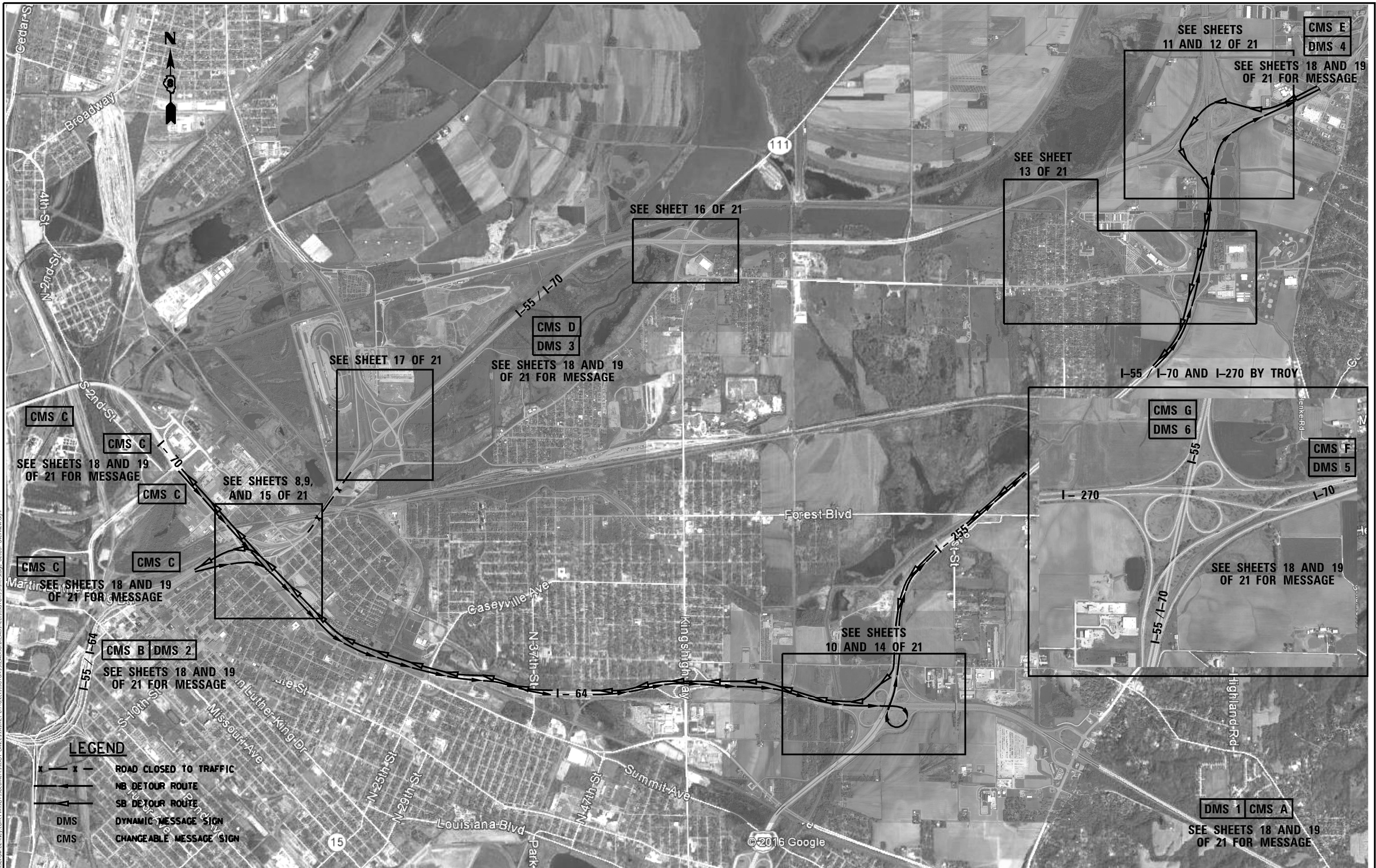
USER NAME = Nathan.Cox	DESIGNED -	REVISED -
	DRAWN -	REVISED -
PLOT SCALE = 2,0000 ' / in.	CHECKED -	REVISED -
PLOT DATE = 3/21/2023	DATE -	REVISED -

STATE OF ILLINOIS
DEPARTMENT OF TRANSPORTATION

INTERSTATE WEEKEND CLOSURE, SPECIAL
DETOUR SIGNING SCHEDULE

SCALE: SHEET 1 OF 15 SHEETS STA. TO STA.

F.A.I. RTE.	SECTION	COUNTY	TOTAL SHEETS	SHEET NO.
70	82-5VB-BJR-1	ST. CLAIR	21	5
CONTRACT NO. 76R93				
ILLINOIS FED. AID PROJECT				



MODEL: Default
FILE: \\net-cw.bentley.com\plm\DOT\Documents\DOT Office\Bridget_S\Projects\087693\CAD\Drawings\087693-sh-Stage detour overview.dgn
3/21/2023

LEGEND

- ROAD CLOSED TO TRAFFIC
- NB DETOUR ROUTE
- SB DETOUR ROUTE
- DMS DYNAMIC MESSAGE SIGN
- CMS CHANGEABLE MESSAGE SIGN

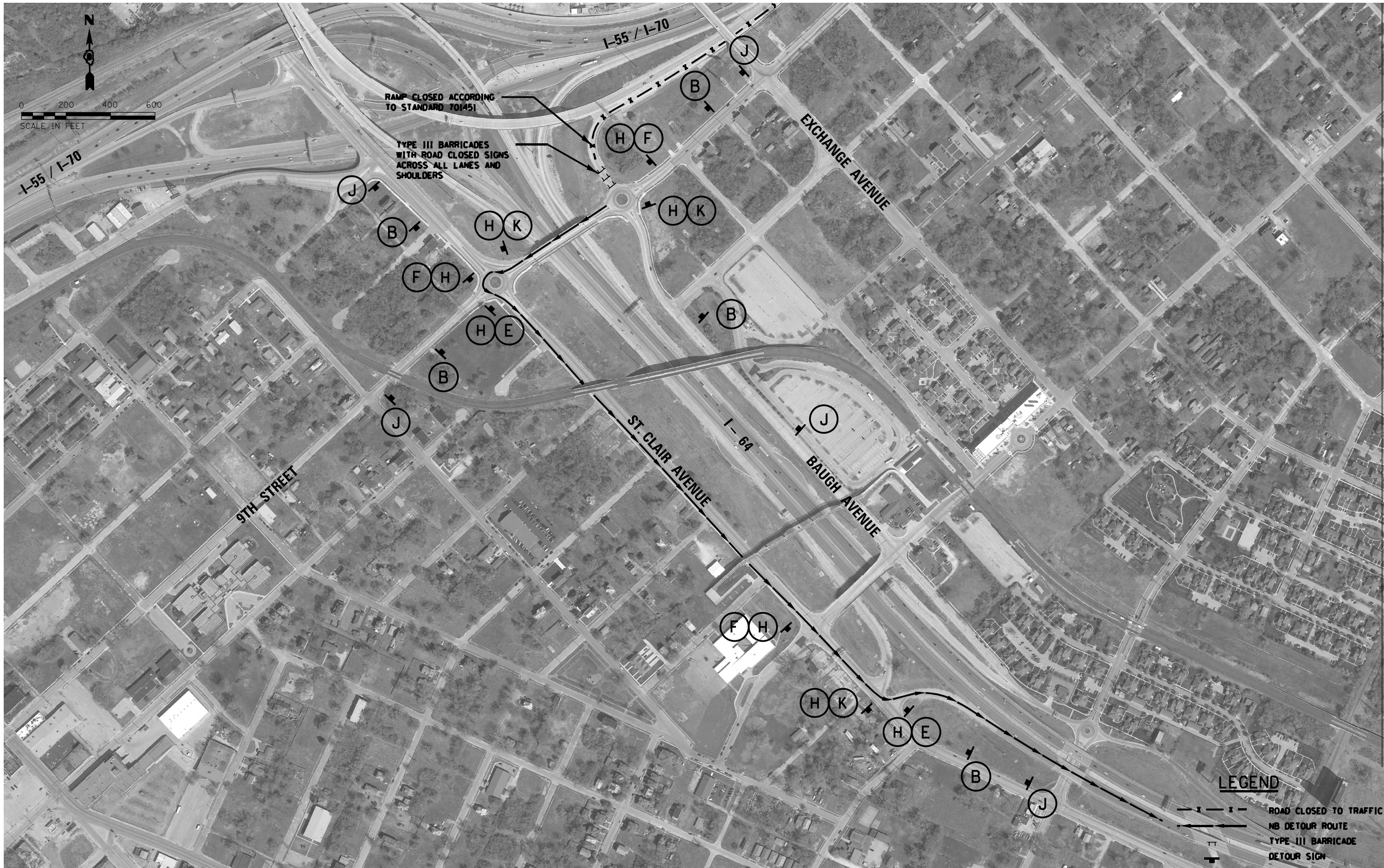
USER NAME	= Nathan.Cox	DESIGNED	-	REVISED	-
DRAWN	-	REVIS	-	REVISED	-
PLOT SCALE	= 3000.0000' / in.	CHECKED	-	REVISED	-
PLOT DATE	= 3/21/2023	DATE	-	REVISED	-

**STATE OF ILLINOIS
DEPARTMENT OF TRANSPORTATION**

**INTERSTATE WEEKEND CLOSURE, SPECIAL
DETOUR OVERVIEW**

SCALE: SHEET 3 OF 15 SHEETS STA. TO STA.

F.A.I. RTE.	SECTION	COUNTY	TOTAL SHEETS	SHEET NO.
70	82-5VB-BJR-1	ST. CLAIR	21	7
CONTRACT NO. 76R93				
ILLINOIS FED. AID PROJECT				



MODEL: Default
FILE: 82-5VB-BJR-1.dwg
PROJECT: 82-5VB-BJR-1
SHEET: 8
DATE: 3/21/2023
USER: Nathan Cox
DESIGNED: -
DRAWN: -
CHECKED: -
DATE: -
REVISED: -
REVISED: -
REVISED: -
REVISED: -
STATE OF ILLINOIS
DEPARTMENT OF TRANSPORTATION
INTERSTATE WEEKEND CLOSURE, SPECIAL
EXCHANGE AVENUE AND INTERSTATE 55/70 - NORTHBOUND DETOUR
SCALE: 1"=200'
SHEET 4 OF 15 SHEETS
STA. TO STA.
ILLINOIS FED. AID PROJECT

USER NAME	= Nathan Cox	DESIGNED	-	REVISED	-
		DRAWN	-	REVISED	-
PLOT SCALE	= 400,0000 ' / in.	CHECKED	-	REVISED	-
PLOT DATE	= 3/21/2023	DATE	-	REVISED	-

STATE OF ILLINOIS
DEPARTMENT OF TRANSPORTATION

INTERSTATE WEEKEND CLOSURE, SPECIAL
EXCHANGE AVENUE AND INTERSTATE 55/70 - NORTHBOUND DETOUR

SCALE: 1"=200' SHEET 4 OF 15 SHEETS STA. TO STA.

LEGEND		ROAD CLOSED TO TRAFFIC
		NB DETOUR ROUTE
		TYPE III BARRICADE
		DETOUR SIGN

F.A.I. RTE.	SECTION	COUNTY	TOTAL SHEETS	SHEET NO.
70	82-5VB-BJR-1	ST. CLAIR	21	8
CONTRACT NO. 76R93				
ILLINOIS FED. AID PROJECT				



MODEL: Default
FILE: 82-5VB-BJR-1.dwg
PROJECT: 82-5VB-BJR-1
USER: Nathan Cox
DATE: 3/21/2023
SHEET: 255 of 255

USER NAME	= Nathan Cox	DESIGNED	-	REVISED	-
PLOT SCALE	= 600,0000 " / in.	DRAWN	-	REVISED	-
PLOT DATE	= 3/21/2023	CHECKED	-	REVISED	-
		DATE	-	REVISED	-

STATE OF ILLINOIS
DEPARTMENT OF TRANSPORTATION

INTERSTATE WEEKEND CLOSURE, SPECIAL INTERSTATE 64 AND INTERSTATE 255 – NORTHBOUND DETOUR			
SCALE: 1"=300'	SHEET 6	OF 15 SHEETS	STA. TO STA.

F.A.I. RTE.	SECTION	COUNTY	TOTAL SHEETS	SHEET NO.
70	82-5VB-BJR-1	ST. CLAIR	21	10
CONTRACT NO. 76R93				
ILLINOIS				FED. AID PROJECT



MODEL: Default
FILE: 82-5VB-BJR-1.dwg
PROJECT: 82-5VB-BJR-1
SHEET: 21
DATE: 3/21/2023

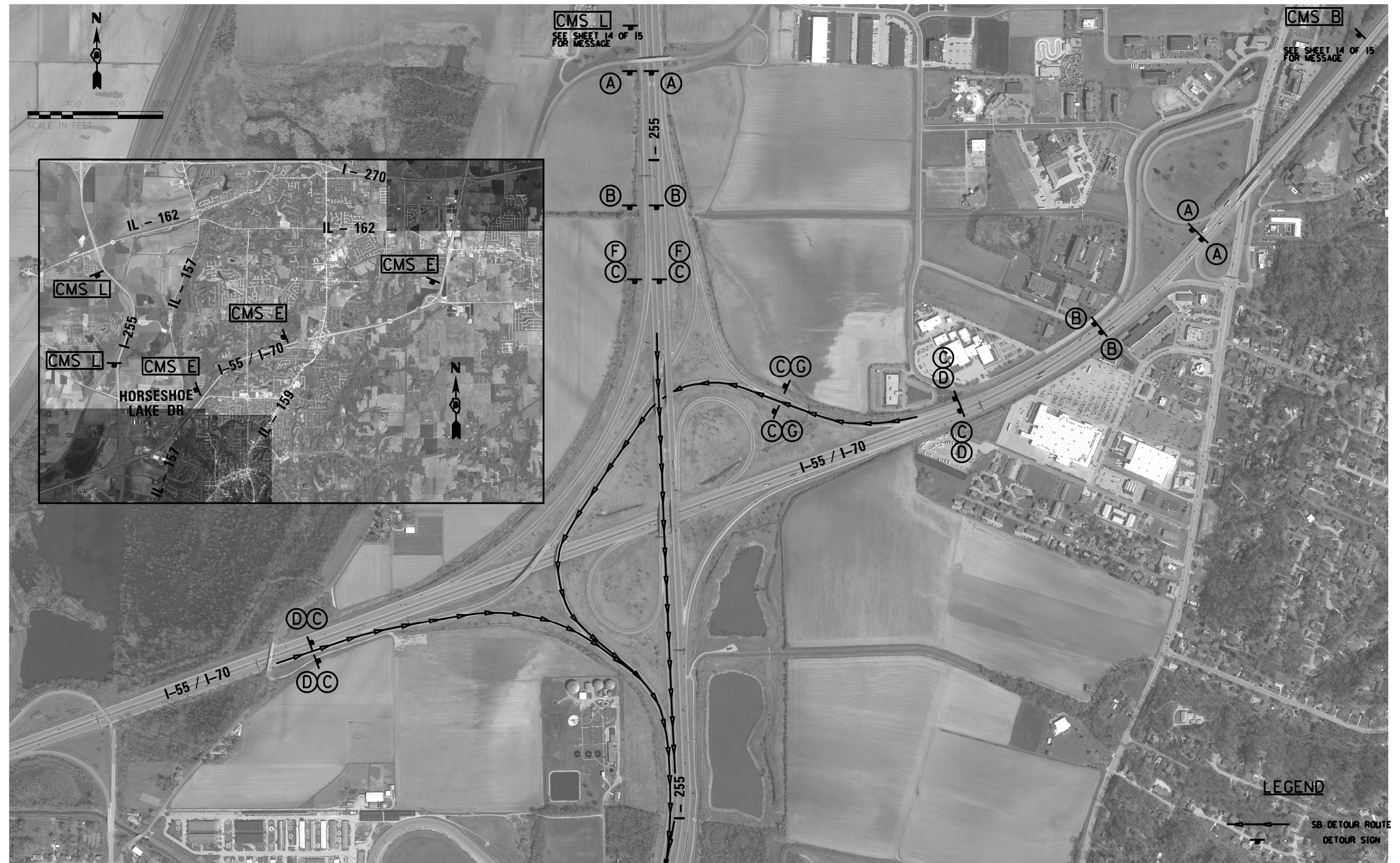
USER NAME	= Nathan.Cox	DESIGNED -	REVISED -
PLOT SCALE	= 800,0000 ' / in.	DRAWN -	REVISED -
PLOT DATE	= 3/21/2023	CHECKED -	REVISED -
		DATE -	REVISED -

STATE OF ILLINOIS
DEPARTMENT OF TRANSPORTATION

INTERSTATE WEEKEND CLOSURE, SPECIAL
INTERSTATE 55/70 AND INTERSTATE 255 - NORTHBOUND DETOUR

SCALE: 1"=400' SHEET 7 OF 15 SHEETS STA. TO STA.

F.A.I. RTE.	SECTION	COUNTY	TOTAL SHEETS	SHEET NO.
70	82-5VB-BJR-1	ST. CLAIR	21	11
CONTRACT NO. 76R93				
ILLINOIS FED. AID PROJECT				



USER NAME = Nathan.Cox	DESIGNED -	REVISED -
	DRAWN -	REVISED -
PLOT SCALE = 800.0000 ' / in.	CHECKED -	REVISED -
PLOT DATE = 3/21/2023	DATE -	REVISED -

**INTERSTATE WEEKEND CLOSURE, SPECIAL
INTERSTATE 55/70 AND INTERSTATE 255 – SOUTHBOUND DETOUR**

F.A.I. RTE.	SECTION	COUNTY	TOTAL SHEETS	SHEET NO.
70	82-5VB-BJR-1	ST. CLAIR	21	12
CONTRACT NO. 76R93				
		ILLINOIS	FED. AID PROJECT	

SB DETOUR ROUTE
DETOUR SIGN



MODEL: Default
FILE: \\nailes-prod\sect-cw-bead\proj\com\pl\W\DOT\Documents\DOT\Office\District 8\Projects\087693\CADD\Drawings\087693-sh-Stage 1b-ct-1-0a.dgn

USER NAME	= Nathan.Cox	DESIGNED	-	REVISED	-
		DRAWN	-	REVISED	-
PLOT SCALE	= 600,0000 ' / in.	CHECKED	-	REVISED	-
PLOT DATE	= 3/21/2023	DATE	-	REVISED	-

STATE OF ILLINOIS
DEPARTMENT OF TRANSPORTATION

INTERSTATE WEEKEND CLOSURE, SPECIAL
INTERSTATE 55/70 AND BLACK LANE – SOUTHBOUND DETOUR

SCALE: 1"=300' SHEET 9 OF 15 SHEETS STA. TO STA.

LEGEND				
				
SB DETOUR ROUTE				
				
DETOUR SIGN				

F.A.I. RTE.	SECTION	COUNTY	TOTAL SHEETS	SHEET NO.
70	82-5VB-BJR-1	ST. CLAIR	21	13
CONTRACT NO. 76R93				
ILLINOIS FED. AID PROJECT				



MODEL: Default
FILE: 82-5VB-BJR-1.dwg
PROJECT: 82-5VB-BJR-1
USER: Nathan.Cox
DATE: 3/21/2023
SCALE: 1"=200'
SHEET: 11 OF 15
SHEETS: 15
STA.: TO STA.

USER NAME	= Nathan.Cox
DESIGNED	-
DRAWN	-
PLOT SCALE	= 400,0000 ' / in.
PLOT DATE	= 3/21/2023

DESIGNED	-
DRAWN	-
CHECKED	-
DATE	-

REVISED	-
REVISED	-
REVISED	-
REVISED	-

STATE OF ILLINOIS
DEPARTMENT OF TRANSPORTATION

INTERSTATE WEEKEND CLOSURE, SPECIAL
INTERSTATE 55/70 AND INTERSTATE 64 – SOUTHBOUND DETOUR

SCALE: 1"=200' SHEET 11 OF 15 SHEETS STA. TO STA.

F.A.I. RTE.	SECTION	COUNTY	TOTAL SHEETS	SHEET NO.
70	82-5VB-BJR-1	ST. CLAIR	21	15
CONTRACT NO. 76R93				
ILLINOIS FED. AID PROJECT				



MODEL: Default
FILE NAME: pwi:\Nldot-pw_bentlev.com\PVIDOT\Documents\DOT_Offices\District_8\Projects\DOT876R93\CADData\CADsheets\DOT876R93-sft-Stage_55_70 RT111.dgn

USER NAME = Nathan,Cox	DESIGNED -	REVISED -
	DRAWN -	REVISED -
PLOT SCALE = 400,0000 ' / in.	CHECKED -	REVISED -
PLOT DATE = 3/21/2023	DATE -	REVISED -

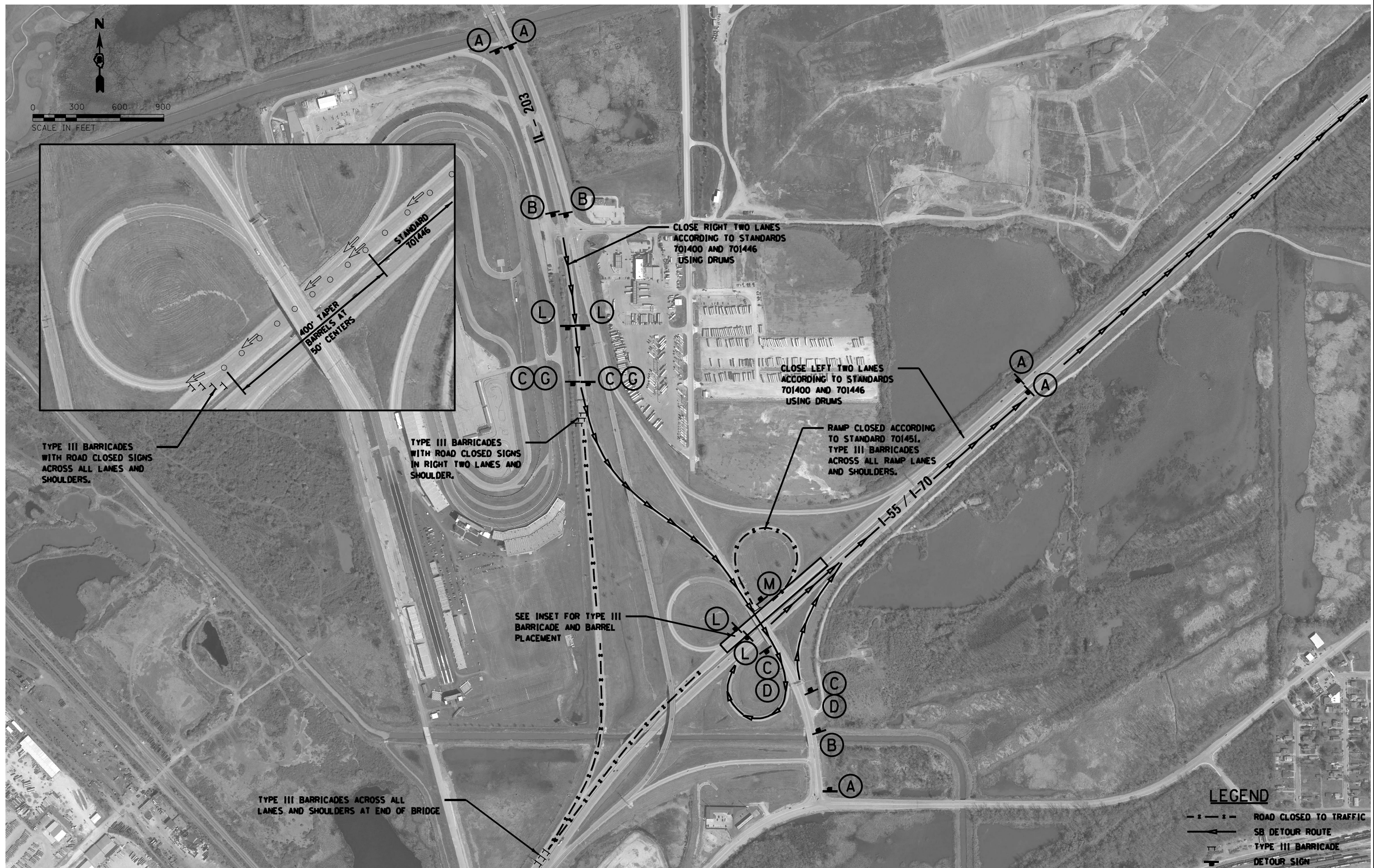
STATE OF ILLINOIS
DEPARTMENT OF TRANSPORTATION

**INTERSTATE WEEKEND CLOSURE, SPECIAL
INTERSTATE 55/70 AND ILLINOIS 111 – SOUTHBOUND DETOUR**

SCALE: 1"=200'	SHEET 12	OF 15 SHEETS	STA.	TO STA.
----------------	----------	--------------	------	---------

F.A.I. RTE.	SECTION	COUNTY	TOTAL SHEETS	SHEET NO.
70	82-5VB-BJR-1	ST. CLAIR	21	16
		CONTRACT NO. 76R93		
		ILLINOIS FED. AID PROJECT		

MODEL: Default
FILE: 82-5VB-BJR-1.dwg
PROJECT: 82-5VB-BJR-1
SHEET: 13 OF 15
DATE: 3/21/2023



LEGEND

- ROAD CLOSED TO TRAFFIC
- SB DETOUR ROUTE
- TYPE III BARRICADE
- DETOUR SIGN

USER NAME	= Nathan.Cox	DESIGNED	-	REVISED	-
DRAWN	-	REVIS	-	REVISED	-
PLOT SCALE	= 600,000' / in.	CHECKED	-	REVISED	-
PLOT DATE	= 3/21/2023	DATE	-	REVISED	-

**STATE OF ILLINOIS
DEPARTMENT OF TRANSPORTATION**

**INTERSTATE WEEKEND CLOSURE, SPECIAL
INTERSTATE 55/70 AND ILLINOIS 203 - SOUTHBOUND DETOUR**

SCALE: 1"=300' SHEET 13 OF 15 SHEETS STA. TO STA.

F.A.I. RTE.	SECTION	COUNTY	TOTAL SHEETS	SHEET NO.
70	82-5VB-BJR-1	ST. CLAIR	21	17
CONTRACT NO. 76R93				
ILLINOIS FED. AID PROJECT				

MODEL: Default
FILE NAME: pw:\ltdot-pw.bentley.com\PW\DOT\Documents\DOT_Offices\District_8\Projects\DOT6R93\CADData\CADsheets\DOT6R93-shl-stage_changable_message.dgn

MESSAGE 1

MESSAGE 2

MESSAGE 1

MESSAGE 2

MESSAGE 1

MESSAGE 2

MESSAGE 1

MESSAGE 2

MESSAGE 1

MESSAGE 2

MESSAGE 1

MESSAGE 2

MESSAGE 1

MESSAGE 2

MESSAGE 1

MESSAGE 2

MESSAGE 1

MESSAGE 2

MESSAGE 1

MESSAGE 2

MESSAGE 1

MESSAGE 2

DETOUR
REMAIN
ON I255S

USER NAME = Nathan,Cox	DESIGNED -	REVISED -
	DRAWN -	REVISED -
PLOT SCALE = 30,0000 ' / in.	CHECKED -	REVISED -
PLOT DATE = 3/21/2023	DATE -	REVISED -

STATE OF ILLINOIS
DEPARTMENT OF TRANSPORTATION

**INTERSTATE WEEKEND CLOSURE, SPECIAL
CHANGEABLE MESSAGE SIGN MESSAGES**

SCALE:	SHEET 14	OF 15	SHEETS	STA.	TO STA.
--------	----------	-------	--------	------	---------

F.A.I. RTE.	SECTION	COUNTY	TOTAL SHEETS	SHEET NO.
70	82-5VB-BJR-1	ST. CLAIR	21	18
		CONTRACT NO. 76R93		
		ILLINOIS FED. AID PROJECT		

DYNAMIC MESSAGE SIGN MESSAGES

DMS #1 (WB I-64 0.25 MILES BEFORE BUNKUM RD)
MESSAGE 1

NB I-55/EB I-70 CLOSED
8 MILES AHEAD

DMS #5 (WB I-70 1.5 MILES BEFORE I-55/I-270)
MESSAGE 1

WB I-70 CLOSED AT IL 203
16 MI AHEAD NEAR DOWNTOWN
FOLLOW MARKED DETOUR

MESSAGE 2

WB I-70 THROUGH TRAFFIC
USE I-270 WB TO I-70 WB
IN MISSOURI

DMS #2 (NB I-55/EB I-64 AND 4TH STREET)
MESSAGE 1

NB I-55/EB I-70 CLOSED @ I-64
FOLLOW MARKED DETOUR
I-64E TO I-255N

DMS #6 (SB I-55 2 MILES BEFORE I-70/I-270)
MESSAGE 1

SB I-55 CLOSED AT IL 203
16 MI AHEAD NEAR DOWNTOWN
FOLLOW MARKED DETOUR

MESSAGE 2

SB I-55 THROUGH TRAFFIC
USE I-255 SB TO I-55 SB
IN MISSOURI

DMS #3 (SB I-55/WB I-70 1 MILES BEFORE IL-203)
MESSAGE 1

SB I-55/WB I-70 CLOSED
ALL LANES MUST EXIT
USE EXIT 4A OR 4B

DMS #4 (SB I-55 2 MILES BEFORE IL 157)
MESSAGE 1

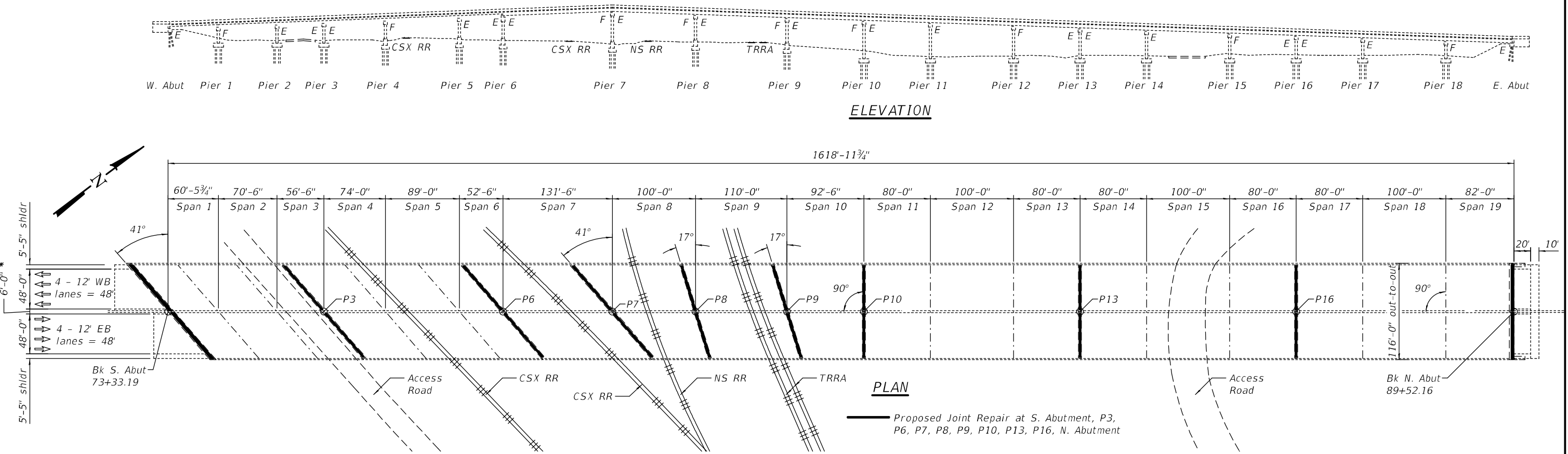
SB I-55/WB I-70 CLOSED @ IL203
FOLLOW MARKED DETOUR
I-255S TO I-64W

MODEL: Default
FILE: N:\GIS\GIS\Projects\DOT\Office\Dirlet_8\Project\087693\CADD\Drawings\087693-01-Stage_dynamic_message.dgn

	USER NAME = Nathan,Cox	DESIGNED -	REVISED -	STATE OF ILLINOIS DEPARTMENT OF TRANSPORTATION	INTERSTATE WEEKEND CLOSURE, SPECIAL DYNAMIC MESSAGE SIGN MESSAGES	F.A.I. RTE.	SECTION	COUNTY	TOTAL SHEETS	SHEET NO.	
		DRAWN -	REVISED -			70	82-5VB-BJR-1	ST. CLAIR	21	19	
	PLOT SCALE = 30,0000 ' / in.	CHECKED -	REVISED -					CONTRACT NO. 76R93			
	PLOT DATE = 3/21/2023	DATE -	REVISED -			SCALE:		SHEET 15 OF 15 SHEETS		STA. TO STA.	
									ILLINOIS FED. AID PROJECT		

Existing Structure: Built in 1959 as a 19 span wide flange and riveted plate girder with multi-column pile supported piers, and pile bent abutments. In 1988 the deck and bearings were replaced. In 1997 seismic retrofits were installed and the neoprene joints were replaced with silicone and polymer at the abutments and piers 7, 8, and 9. In 2017 the joints were repaired with partial depth deck end repairs, polymer, and silicone as interim repairs prior to a complete rehab planned for 2022. These repairs are interim joint repairs, since the rehab is delayed to acquire RR easements, The joints shall be repaired as shown, and the deck shall be patched.

The EB and WB lanes will be closed with traffic detoured on the weekends.



GENERAL NOTES

Plan dimensions and details relative to existing plans are subject to nominal construction variations. The Contractor shall field verify existing dimensions and details affecting new construction and make necessary approved adjustments prior to construction or ordering of materials. Such variations shall not be cause for additional compensation for a change in scope of the work, however, the Contractor will be paid for the quantity actually furnished at the unit price bid for the work.

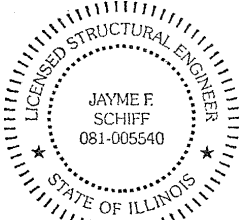
No field welding is permitted except as specified in the contract documents.

The existing structural steel coating contains lead. The Contractor shall take appropriate precautions to deal with the presence of lead on this project.

Joint opening shall be adjusted according to Article 520.04 of the Standard Specs. when the deck is poured at an ambient temperature other than 50°F.

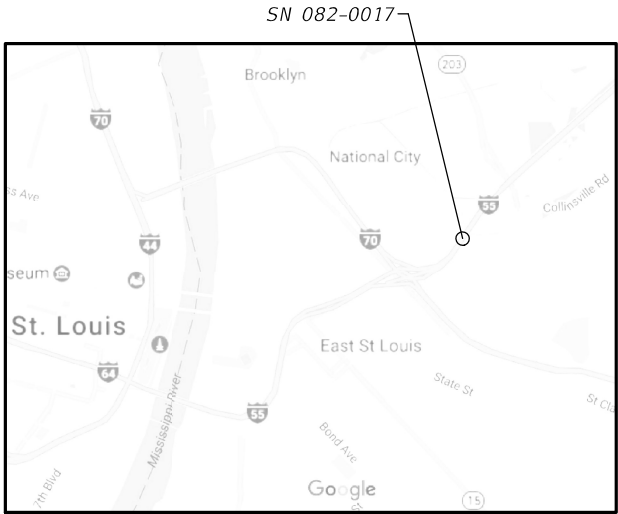
There is no access under the bridge. The Contractor shall perform all joint repairs from the top of the bridge deck. There shall be no full depth deck patches in spans 5-9.

The quantities for Deck Slab Repair are estimated. The final locations and quantities shall be determined by the Resident Engineer.



EXPIRES 11-30-2024

Jayme F. Schiff

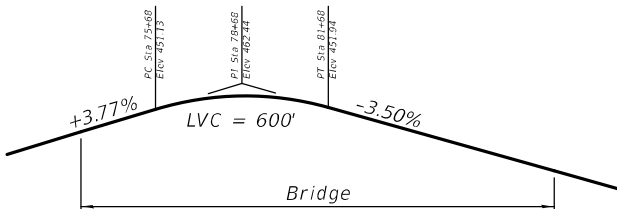


LOCATION SKETCH

DESIGN STRESSES

FIELD UNITS

f'c = 3,500 psi



PROFILE GRADE

TOTAL BILL OF MATERIAL

ITEM	UNIT	TOTAL
Concrete Removal	Cu. Yd.	62.9
Concrete Superstructure	Cu. Yd.	62.9
Deck Slab Repair (Full Depth, Type II)	Sq. Yd.	20
Deck Slab Repair (Partial)	Sq. Yd.	200
Silicone Joint Sealer, 2"	Foot	1306.0

USER NAME = Default	DESIGNED - John Uehle	REVISED -
	DRAWN - John Uehle	REVISED -
PLOT SCALE = 0:2.0000 " = 1' / in.	CHECKED - Adrian Holloway	REVISED -
PLOT DATE = 5/4/2023	DATE - May 4, 2023	REVISED -

STATE OF ILLINOIS
DEPARTMENT OF TRANSPORTATION

GENERAL PLAN AND ELEVATION

SN 082-0017 I-55/70 OVER CSXRR, NSRR, & TRRA (0.7MI W. OF IL 203)

SCALE: 1"=60'

SHEET 1

OF 2

SHEETS

STA. 73+33.19

TO STA. 89+52.16

F.A.I. RTE.	SECTION	COUNTY	TOTAL SHEETS	SHEET NO.
55/70	82-5VB-BJR-1	ST. CLAIR	21	20
CONTRACT NO. 76R93				
ILLINOIS FED. AID PROJECT				

