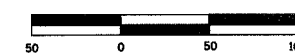
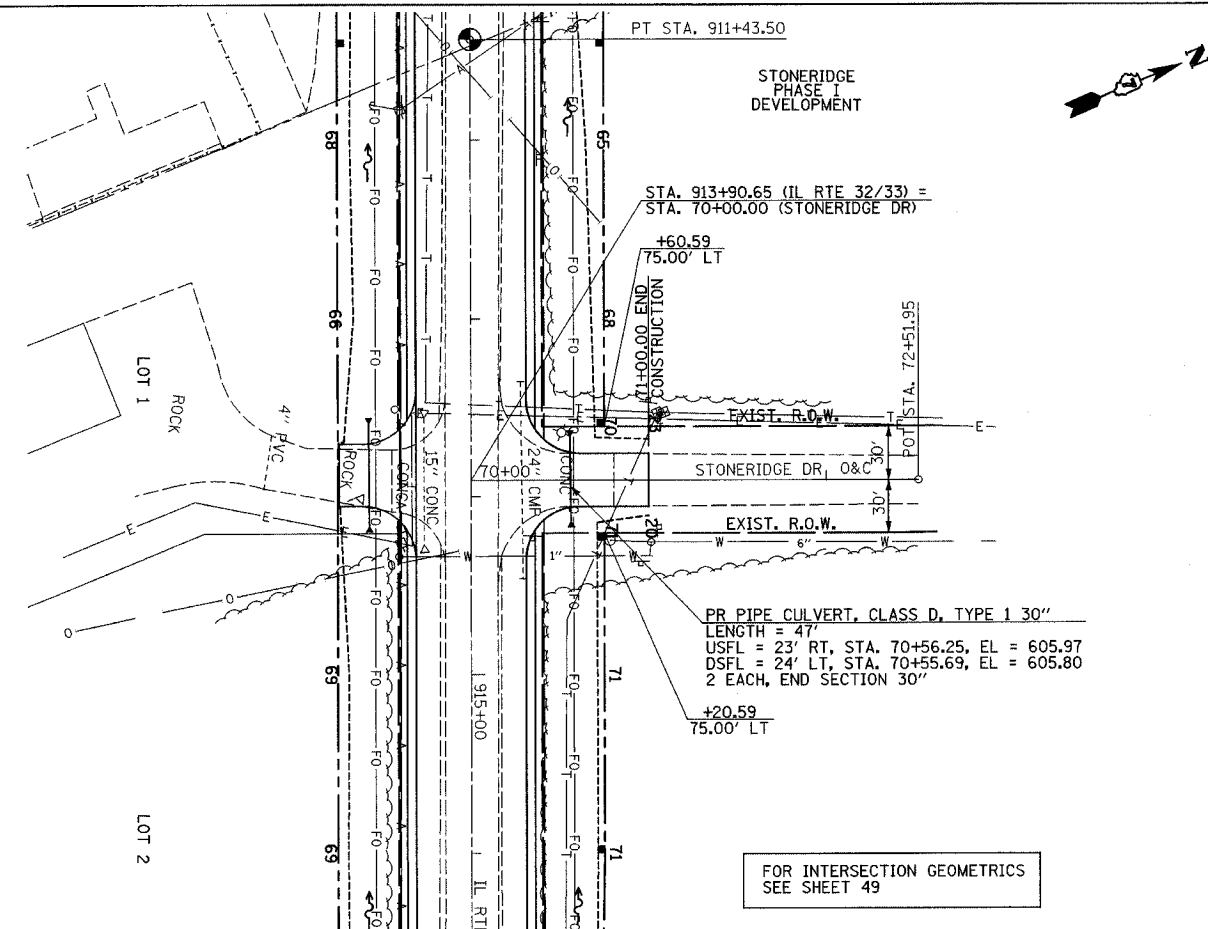


F.A.P. RTE.	SECTION	COUNTY	TOTAL SHEETS	SHEET NO.
774	107 WRS-2, L	EFFINGHAM	127	45
FED. ROAD DIST. NO.		ILLINOIS	FED. AID PROJECT	

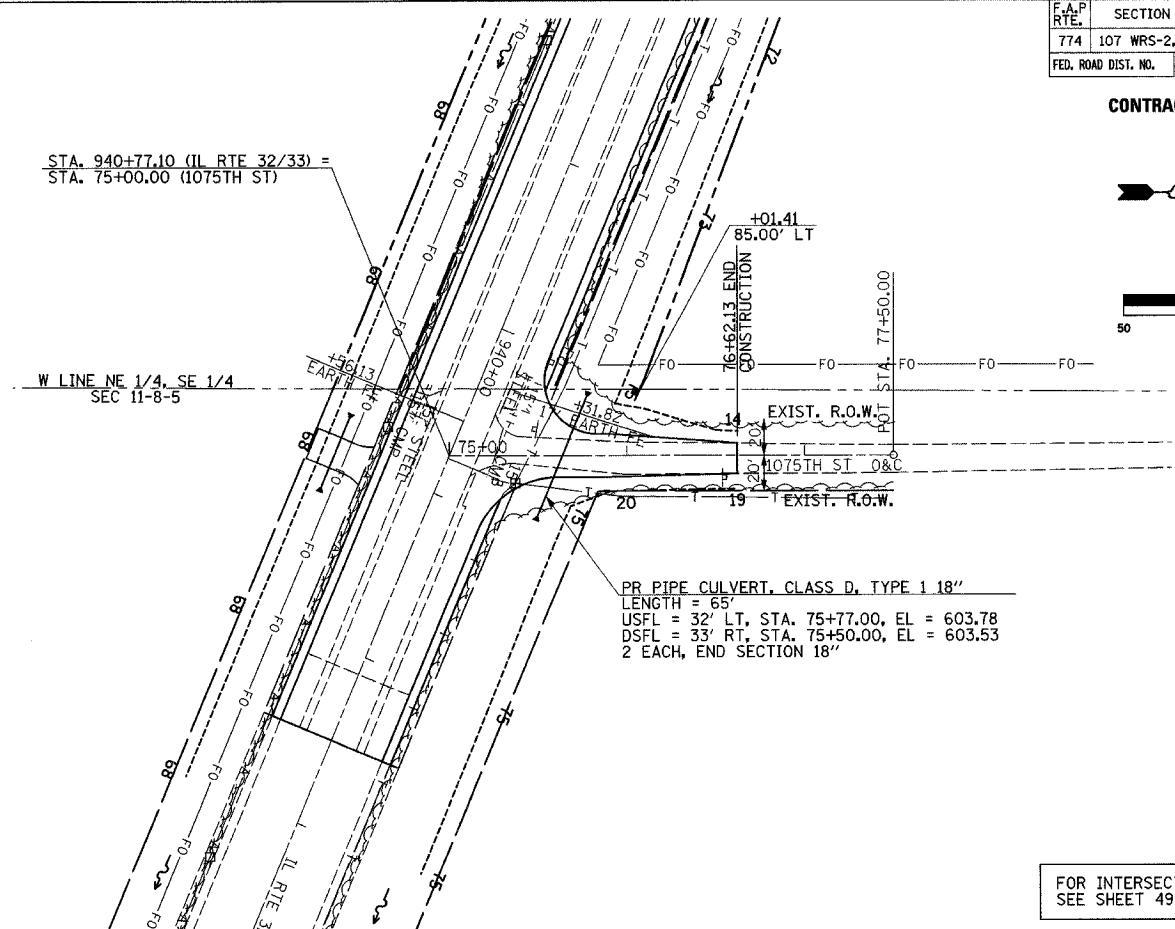
CONTRACT NO. 74130



PLAN	DATE
BY	
CHECKED	
DATE	
NO.	

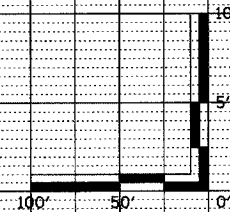
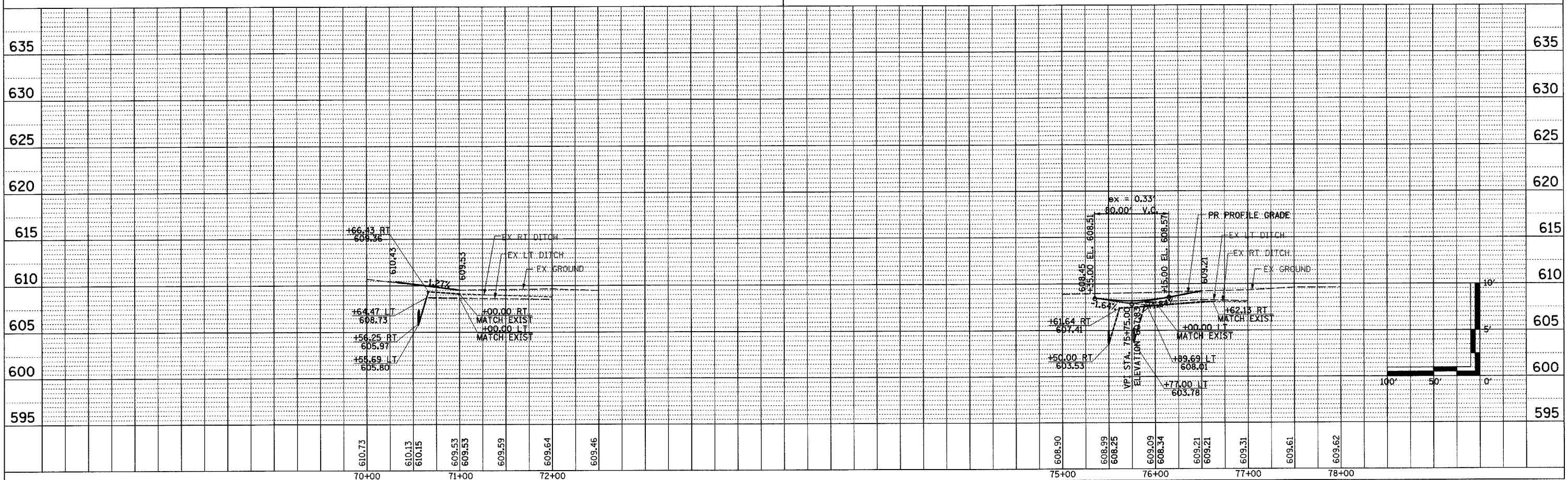


FOR INTERSECTION GEOMETRICS  
SEE SHEET 49



FOR INTERSECTION GEOMETRICS  
SEE SHEET 49

PROFILE	DATE
BY	
CHECKED	
DATE	
NO.	



STONERIDGE & 1075TH ST PUBLIC ROAD SHEET 4 OF 4