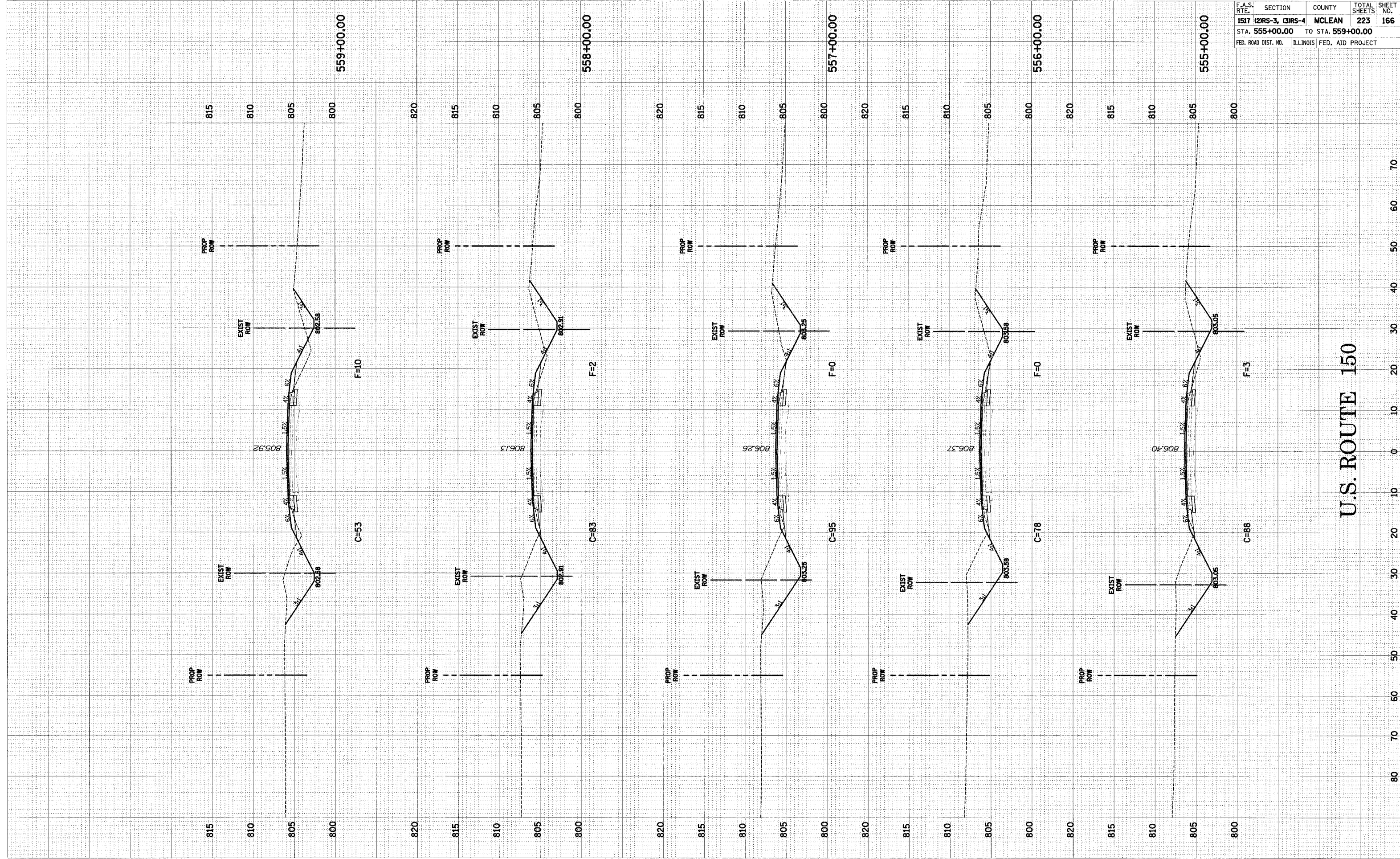


FINAL SURVEY PLATED
 NOTE BOOK AREAS CHECKED

ORIGINAL SURVEY PLATED
 NOTE BOOK AREAS CHECKED

F.A.S. RTE.	SECTION	COUNTY	TOTAL SHEETS	SHEET NO.
1517 (2)RS-3, (3)RS-4	MCLEAN		223	166
STA. 555+00.00 TO STA. 559+00.00		FED. ROAD DIST. NO. ILLINOIS FED. AID PROJECT		



U.S. ROUTE 150

U.S. ROUTE 150 CROSS-SECTIONS STA. 555+00.00 TO STA. 559+00.00