

STATE OF ILLINOIS  
DEPARTMENT OF TRANSPORTATION

F.A.P. RTE.	SECTION	COUNTY	TOTAL SHEETS	SHEET NO.
745	(104) RS-6, (105) RS-8	ADAMS	23	1
ILLINOIS			CONTRACT NO. 72K59	

FOR INDEX OF SHEETS, SEE SHEET NO. 2

PROPOSED  
HIGHWAY PLANS

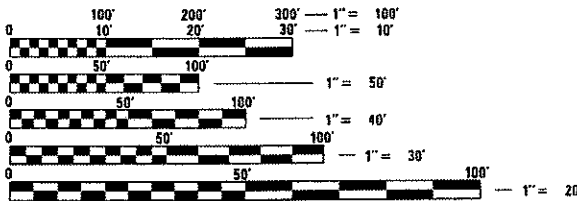
FAP ROUTE 745 (IL 104)  
SECTION (104) RS-6, (105) RS-8  
PROJECT STP-CWLQ(560)  
RESURFACING (3P)  
ADAMS COUNTY

C-96-088-18

ROADWAY CLASSIFICATION  
MINOR ARTERIAL

AVERAGE DAILY TRAFFIC YEAR 2015

START OF PROJECT TO COLUMBUS ROAD  
ADT: 4,500 (SU = 6.17%, MU = 1.98%)  
COLUMBUS ROAD TO END OF PROJECT  
ADT: 2,300 (SU = 8.70%, MU = 2.16%)

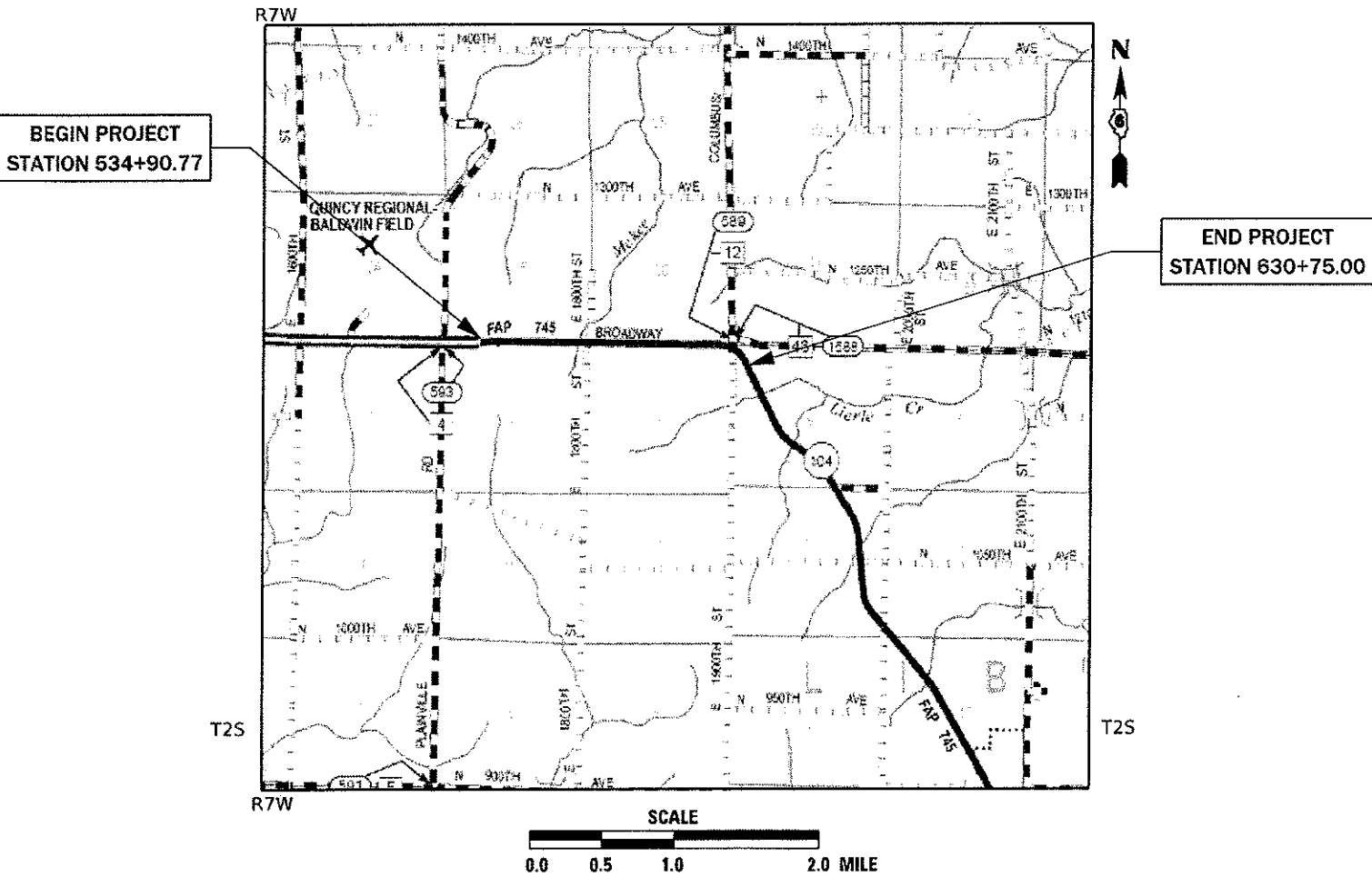


FULL SIZE PLANS HAVE BEEN PREPARED USING STANDARD  
ENGINEERING SCALES. REDUCED SIZED PLANS WILL NOT  
CONFORM TO STANDARD SCALES. IN MAKING MEASUREMENTS  
ON REDUCED PLANS, THE ABOVE SCALES MAY BE USED.

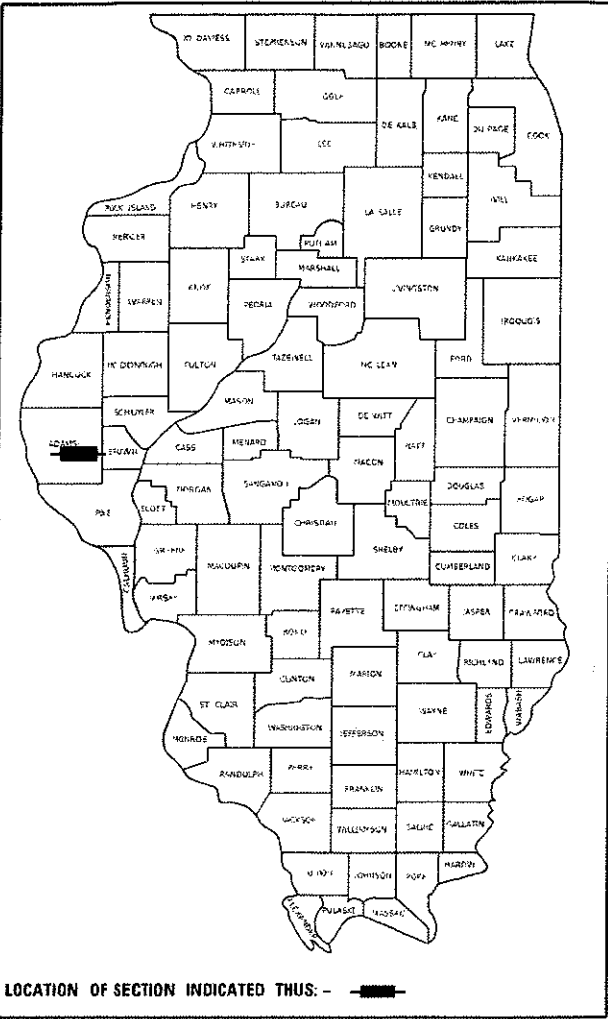
J.U.L.I.E.  
JOINT UTILITY LOCATION INFORMATION FOR EXCAVATION  
1-800-892-0123  
OR 811

PROJECT ENGINEER: JAY WAVERING PE (217) 785-9046  
PROJECT MANAGER: MICHAEL WHITLING (217) 524-0239

CONTRACT NO. 72K59



GROSS LENGTH = 9594.23 FT. = 1.81 MILE  
NET LENGTH = 9594.23 FT. = 1.81 MILE



STATE OF ILLINOIS  
DEPARTMENT OF TRANSPORTATION  
SUBMITTED 21 March 2018  
Regional Engineer  
May 11 2018  
Engineer of Design and Environment  
May 11 2018  
Director of Highways Project Implementation 3

PRINTED BY THE AUTHORITY  
OF THE STATE OF ILLINOIS

MODEL General Notes  
FILE Name: p:\00404EED\INDTEC\Illinois.gov\PIWDOT\Documents\DDOT Office\District 6\Projects\0672\K59\CADD\data\CD\sheets\0672\K59-sh-02-gennotes.dgn

INDEX OF SHEETS

SHEET NO.	SHEET DESCRIPTION
1	COVER SHEET
2	GENERAL NOTES
3 - 5	SUMMARY OF QUANTITIES
6 - 8	TYPICAL SECTIONS
9 - 11	SCHEDULE OF QUANTITIES
12	PERMANENT SURVEY MARKERS
13 - 21	PLAN SHEETS
22 - 23	DISTRICT 6 STANDARDS

HIGHWAY STANDARDS

NO.	DESCRIPTION
000001-06	STANDARD SYMBOLS, ABBREVIATIONS AND PATTERNS
001001-02	AREAS OF REINFORCEMENT BARS
001006	DECIMAL OF AN INCH AND OF A FOOT
442201-03	CLASS C AND D PATCHES
667101-02	PERMANENT SURVEY MARKERS
701001-02	OFF-RD OPERATIONS, 2L, 2W, MORE THAN 15' (4.5 m) AWAY
701006-05	OFF-RD OPERATIONS, 2L, 2W, 15' (4.5 m) TO 24" (600 mm) FROM PAVEMENT EDGE
701201-04	LANE CLOSURE, 2L, 2W, DAY ONLY FOR SPEEDS > OR = 45 MPH
701306-04	LANE CLOSURE, 2L, 2W, SLOW MOVING OPERATIONS DAY ONLY, FOR SPEEDS > OR = 45 MPH
701311-03	LANE CLOSURE 2L, 2W MOVING OPERATIONS - DAY ONLY
701701-10	URBAN LANE CLOSURE, MULTILANE INTERSECTION
701901-07	TRAFFIC CONTROL DEVICES
780001-05	TYPICAL PAVEMENT MARKINGS
781001-04	TYPICAL APPLICATIONS RAISED REFLECTIVE PAVEMENT MARKERS

GENERAL NOTES

- ANY REFERENCE TO A STANDARD IN THESE PLANS SHALL BE INTERPRETED TO MEAN THE EDITION AS INDICATED BY THE SUB NUMBER LISTED IN THE INDEX OF SHEETS OR THE COPY OF THE STANDARD INCLUDED IN THESE PLANS.
- IN ADDITION TO FIELD SURVEY, PLAN DIMENSIONS AND DETAILS RELATIVE TO THE EXISTING FACILITIES HAVE BEEN TAKEN FROM EXISTING PLANS AND ARE SUBJECT TO CONSTRUCTION VARIATIONS. IT SHALL BE THE CONTRACTOR'S RESPONSIBILITY TO VERIFY SUCH DIMENSIONS AND DETAILS IN THE FIELD. SUCH VARIATIONS SHALL NOT BE A CAUSE FOR ADDITIONAL COMPENSATION DUE TO A CHANGE IN THE SCOPE OF WORK; HOWEVER, THE CONTRACTOR WILL BE PAID FOR THE QUANTITY ACTUALLY FURNISHED AT THE UNIT PRICE BID FOR THE WORK.
- ALL ELEVATIONS SHOWN ON THE PLANS ARE ESTABLISHED FROM U.S.G.S. MEAN SEA LEVEL DATUM.
- THE CONTRACTOR SHALL BE RESPONSIBLE FOR PROTECTING UTILITY PROPERTY FROM CONSTRUCTION OPERATIONS, AS OUTLINED IN ARTICLE 107.31 OF THE STANDARD SPECIFICATIONS. THE J.U.L.I.E. NUMBER IS 1-800-892-0123. A MINIMUM OF 48 HOURS ADVANCE NOTICE IS REQUIRED.
- ACCESS MUST BE MAINTAINED TO ALL EXISTING PROPERTIES DURING CONSTRUCTION PER ARTICLE 107.09 UNLESS ARRANGEMENTS ARE MADE IN WRITING BY THE CONTRACTOR WITH THE PROPERTY OWNERS WITH A COPY TO THE ENGINEER FOR SHORT-TERM CLOSURES.
- CONTINUOUS PAVING OPERATIONS ON THE MAIN ROADWAY SHALL BE MAINTAINED AT ALL TIMES DURING THE CONSTRUCTION OF THE HOT-MIX ASPHALT SURFACE. NO INTERRUPTIONS FOR SIDE ROADS, ENTRANCE, TURN LANES, ETC. WILL BE ALLOWED.
- THE THICKNESS OF HOT-MIX ASPHALT MIXTURES SHOWN ON THE PLANS IS THE NOMINAL THICKNESS. DEVIATIONS FROM THE NOMINAL THICKNESS WILL BE PERMITTED WHEN SUCH DEVIATIONS OCCUR DUE TO IRREGULARITIES IN THE EXISTING SURFACE OR BASE ON WHICH THE HOT-MIX ASPHALT MIXTURE IS PLACED.
- THE NOMINAL THICKNESS FOR LEVELEING BINDERS AND HMA SURFACE COURSES ARE SHOWN ON THE TYPICAL SECTIONS, SHCHEDULES, OR SPECIAL DETAILS. THE CONSTRUCTED THICKNESSES OF THE ABOVE ITEMS SHALL NOT BE LESS THAN 90 PERCENT OF THE NOMINAL THICKNESS AT ANY LOCATION.
- ALL SAW CUTS, NECESSARY TO COMPLETE THE WORK DETAILED IN THESE PLANS, SHALL BE INCLUDED IN THE COST FOR THE VARIOUS PAY ITEMS INVOLVED. THE MINIMUM SAW CUT DEPTH IN THE PAVEMENT SHALL BE 1 1/2" UNLESS OTHERWISE SPECIFIED IN A DETAIL SHOWN IN THE PLANS.
- UNLESS DIRECTED BY THE ENGINEER, PAVEMENT MARKING LINES SHALL NOT BE LAID DIRECTLY OVER A LONGITUDINAL CRACK OR JOINT NOR OVER A TAR OR ASPHALT PAINTED LINE. THE EDGE OF A CENTERLINE OR LANE LINE SHALL BE OFFSET A MINIMUM DISTANCE OF 2" FROM A LONGITUDINAL CRACK OR JOINT. EDGE LINES SHALL BE APPROXIMATELY 2" FROM A LONGITUDINAL CRACK OR JOINT. EDGE LINES SHALL BE APPROXIMATELY 2" FROM THE EDGE LINE OF PAVEMENT. SEE SECTION 780 OF THE STANDARD SPECIFICATIONS FOR TRAFFIC CONTROL ITEMS.
- THE DISTRICT BUREAU OF OPERATIONS SHALL BE NOTIFIED AT LEAST 14 DAYS PRIOR TO PLACEMENT OF FINAL PAVEMENT MARKING. PHONE (217) 782-7314
- ANY EXISTING ROAD SIGNS THAT INTERFERE WITH CONSTRUCTION WILL BE REMOVED OR RELOCATED AS DIRECTED BY THE ENGINEER. AFTER THE CONSTRUCTION IS COMPLETED, THE CONTRACTOR WILL REPLACE THE SIGNS AS DIRECTED BY THE ENGINEER. THIS WORK WILL NOT BE PAID SEPARATELY BUT SHALL BE CONSIDERED INCIDENTAL TO THE CONTRACT AND NO COMPENSATION WILL BE ALLOWED.

APPLICATION RATES

THE FOLLOWING RATES OF APPLICATION WERE UTILIZED TO CALCULATE QUANTITIES

GRANULAR MATERIALS	2.05 TONS/CU YD
BITUMINOUS MATERIAL - TACK COAT (EXISTING HMA, MILLED SURFACE, CONCRETE, MILLED/TINED CONCRETE)	0.05 LBS/SO FT
BITUMINOUS MATERIALS - TACK COAT (FOG COAT - BETWEEN HMA LIFTS)	0.025 LBS/SQ FT
HMA SURFACE/BINDER	0.056 TONS/SQ YD*IN

MIXTURE REQUIREMENTS

MIXTURE USE(S):	HMA SURFACE
PG:	PG 64-22
DESIGN AIR VOIDS:	4.0% @ N50
MIXTURE COMPOSITION	IL 9.5
FRICTION AGGREGATE:	MIX "C"
QUALITY MANAGEMENT	QCP
SUBLOT SIZE:	1000 TONS

MIXTURE USE(S):	HMA LEVELING BINDER
PG:	PG 64-22
DESIGN AIR VOIDS:	4.0% @ N50
MIXTURE COMPOSITION	IL 9.5
FRICTION AGGREGATE:	N/A
QUALITY MANAGEMENT	QC/QA
SUBLOT SIZE:	N/A

MIXTURE USE(S):	
PG:	PG 64-22
DESIGN AIR VOIDS:	4.0% @ N50
MIXTURE COMPOSITION	IL 9.5
FRICTION AGGREGATE:	MIX "C"
QUALITY MANAGEMENT	QC/QA
SUBLOT SIZE:	N/A

COMMITMENTS

- THE FIELD/RESIDENT ENGINEER SHALL CONTACT STUDIES AND PLANS COVERING ANY MAJOR PLAN CHANGES TO MAKE SURE NO PREVIOUS COMMITMENTS (NOT LISTED) WERE MADE AFFECTING THE DESIGN, AND TO ALLOW IMPROVED DESIGN FOR THE FUTURE.

DISTRICT SIX	
EXAMINED	May 15 <sup>th</sup> 20 17
OPERATIONS ENGINEER	

EXAMINED	May 30, 20 17
PROJECT IMPLEMENTATION ENGINEER	

EXAMINED	May 24 20 17
PROGRAM DEVELOPMENT ENGINEER	

STATE OF ILLINOIS  
DEPARTMENT OF TRANSPORTATION

GENERAL NOTES, INDEX OF SHEETS  
MIXTURE REQUIREMENTS

SCALE: SHEET OF SHEETS STA. TO STA.

F.A.P. RTE.	SECTION	COUNTY	TOTAL SHEETS	SHEET NO.
745	(104) RS-6, (105) RS-8	ADAMS	23	2
CONTRACT NO. 72K59				
ILLINOIS FED. AID PROJECT STP-CWLQ(560)				



USER NAME = whitingsme	DESIGNED -	REVISED -
	DRAWN -	REVISED -
PLOT SCALE = 100.0000' / in.	CHECKED -	REVISED -
PLOT DATE = 3/21/2018	DATE -	REVISED -

SUMMARY OF QUANTITIES				
SCALE:	SHEET	OF	SHEETS	STA. TO STA.

F.A.P. RTE.	SECTION	COUNTY	TOTAL SHEETS	SHEET NO.
745	(104) RS-6, (105) RS-8	ADAMS	23	3
		CONTRACT NO. 72K59		
ILLINOIS		FED. AID PROJECT	STP-CWLQ(S60)	



PPS# 6-01149-0000  
STP

ROADWAY  
0005  
RURAL

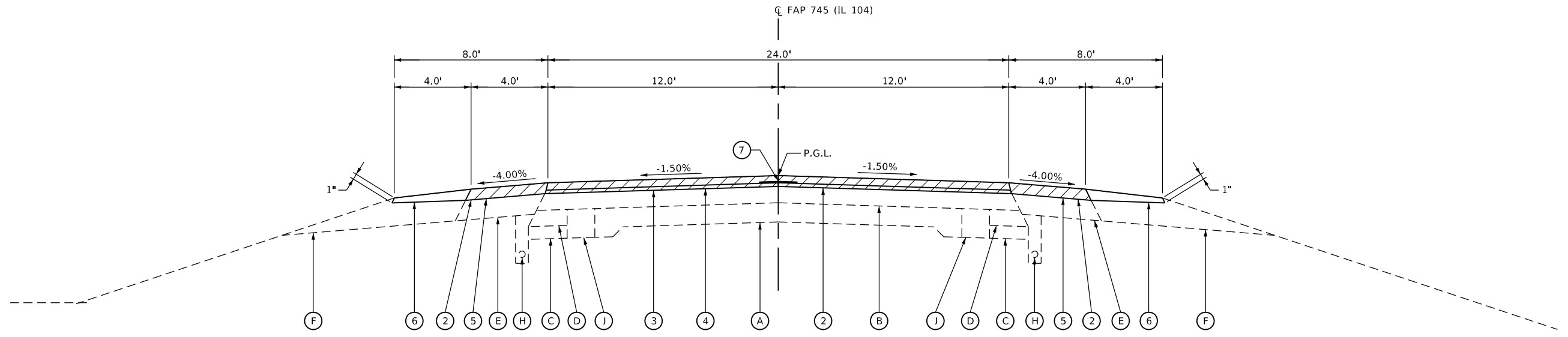
### MODEL: Summary of Quantiles

**STATE OF ILLINOIS  
DEPARTMENT OF TRANSPORTATION**

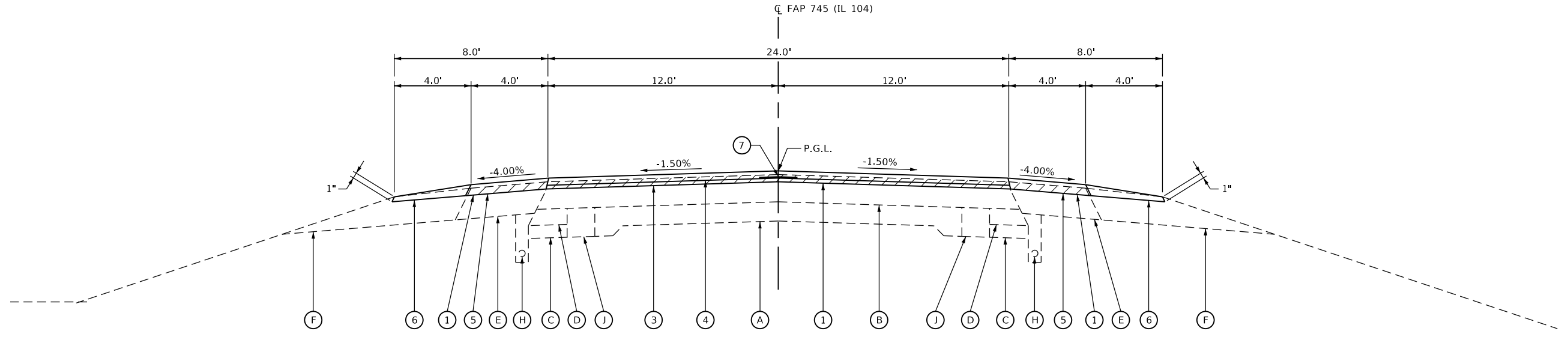
### SUMMARY OF QUANTITIES

SCALE:	SHEET	OF	SHEETS	STA.	TO STA.
--------	-------	----	--------	------	---------

F.A.P. RTE.	SECTION	COUNTY	TOTAL SHEETS	SHEET NO.
745	(104) RS-6, (105) RS-8	ADAMS	23	5
		CONTRACT NO. 72KS9		
ILLINOIS		FED. AID PROJECT		STP-CWLQHS60



**TYPICAL SECTION #1**  
FAP 745 (IL 104)  
STATION 534+95.77 TO STATION 540+00.00

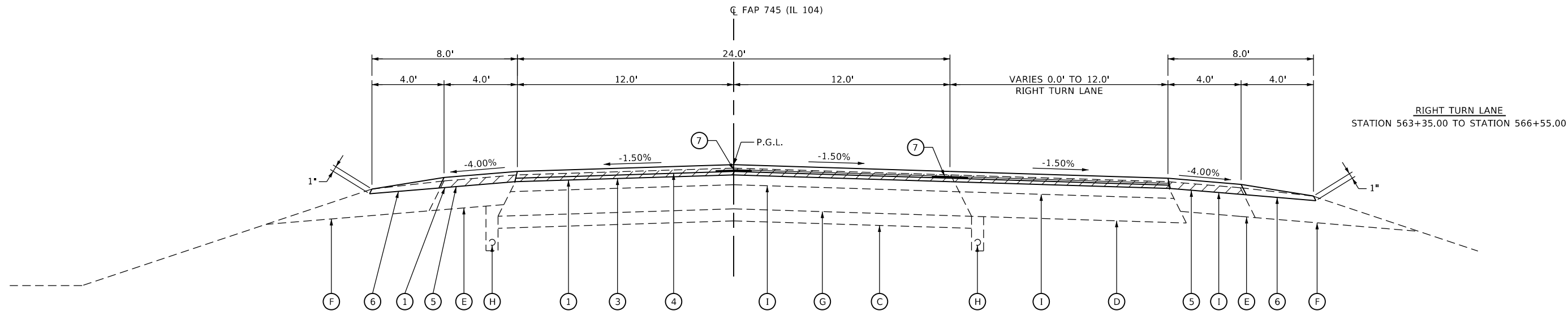


**TYPICAL SECTION #2**  
FAP 745 (IL 104)  
STATION 540+40.00 TO STATION 561+00.00

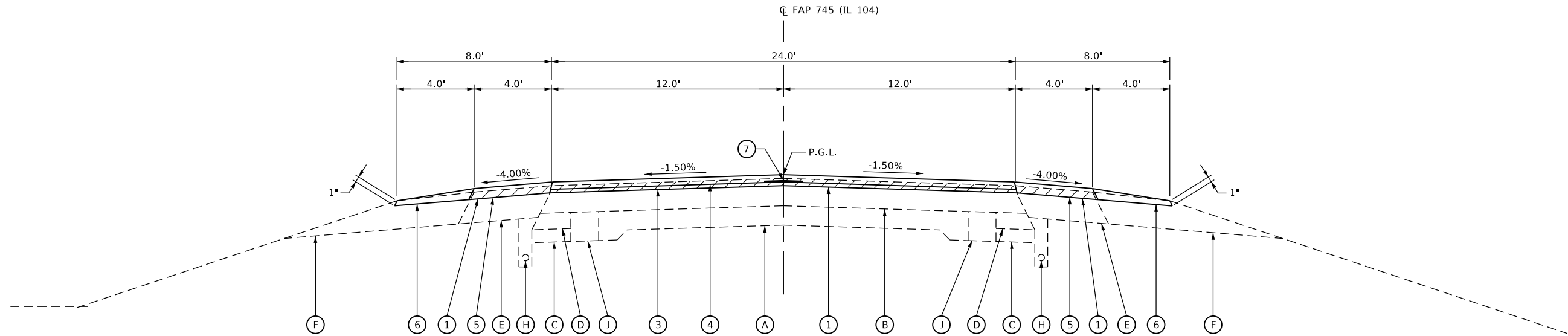
TYPICAL SECTION LEGEND					
(A)	EXISTING 9-6-9 PCC PAVEMENT	(F)	EXISTING AGGREGATE SHOULDER, TYPE B 8"	(1)	PROPOSED HMA SURFACE REMOVAL, 1-1/2"
(B)	EXISTING HMA OVERLAY - 9-1/4"	(G)	EXISTING HMA BASE COURSE 8"	(2)	PROPOSED HMA SURFACE REMOVAL, 2-1/4"
(C)	EXISTING SUBBASE GRANULAR MATERIAL, TYPE A 4"	(H)	EXISTING PIPE UNDERDRAIN 4"	(3)	PROPOSED LEVELING BINDER (MACHINE METHOD), N50 (3/4")
(D)	EXISTING HMA BASE COURSE WIDENING 8"	(I)	EXISTING HMA OVERLAY 4-3/4"	(4)	PROPOSED HMA SURFACE COURSE, MIX "C", N50 (1-1/2")
(E)	EXISTING HMA SHOULDER 8"	(J)	EXISTING PCC BASE COURSE WIDENING	(5)	PROPOSED HMA SHOULDERS (2 1/4")
				(6)	PROPOSED AGGREGATE WEDGE SHOULDER, TYPE B
				(7)	PROPOSED LONGITUDINAL JOINT SEALANT

MODEL Typical Sections  
FILE Name: s:\m\0407ED\NTEC\Illinois.gov\PIV\DOT\Documents\DOT Office\DI\drct 6\Projects\0672\K59\CADD\data\CAD\sheet\0672\K59-sh-04-tykal.dgn

	USER NAME = whitlingme		DESIGNED -	REVISED -	STATE OF ILLINOIS DEPARTMENT OF TRANSPORTATION	TYPICAL SECTIONS FAP 745 (IL 104)				F.A.P. RTE.	SECTION	COUNTY	TOTAL SHEETS	SHEET NO.
	DRAWN -		REVISD -	REVISD -						745	(104) RS-6, (105) RS-8	ADAMS	23	6
	PLOT SCALE = 6.0000 ' / in.		CHECKED -	REVISD -		SCALE: SHEET OF SHEETS STA. TO STA.				CONTRACT NO. 72K59				
	PLOT DATE = 3/21/2018		DATE -	REVISD -						ILLINOIS	FED. AID PROJECT	STP-CWLQ(560)		



**TYPICAL SECTION #3**  
FAP 745 (IL 104)  
STATION 561+00.00 TO STATION 574+50.00



**TYPICAL SECTION #4**  
FAP 745 (IL 104)  
STATION 574+50.00 TO STATION 611+49.98

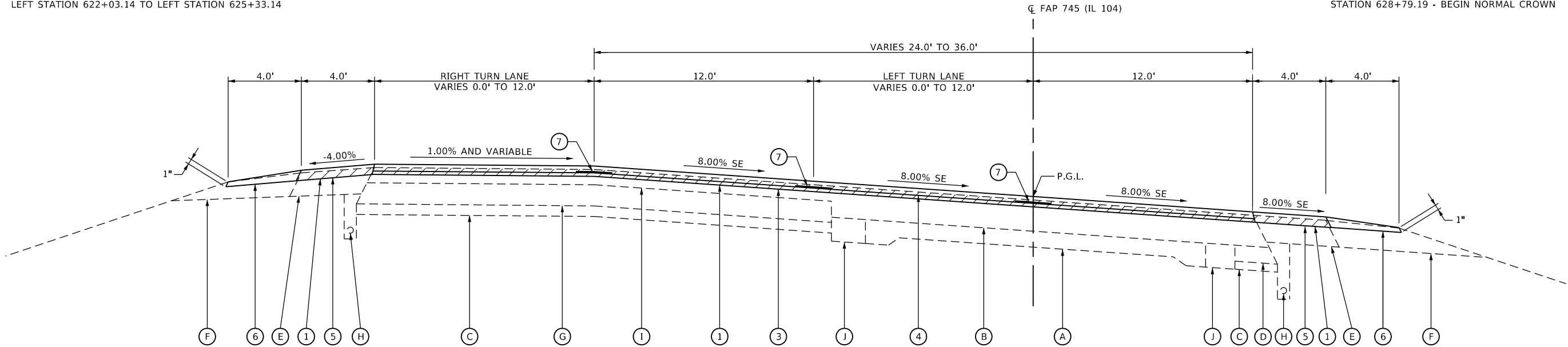
TYPICAL SECTION LEGEND					
(A)	EXISTING 9-6-9 PCC PAVEMENT	(F)	EXISTING AGGREGATE SHOULDER, TYPE B 8"	(1)	PROPOSED HMA SURFACE REMOVAL, 1-1/2"
(B)	EXISTING HMA OVERLAY - 9-1/4"	(G)	EXISTING HMA BASE COURSE 8"	(2)	PROPOSED HMA SURFACE REMOVAL, 2-1/4"
(C)	EXISTING SUBBASE GRANULAR MATERIAL, TYPE A 4"	(H)	EXISTING PIPE UNDERDRAIN 4"	(3)	PROPOSED LEVELING BINDER (MACHINE METHOD), N50 (3/4")
(D)	EXISTING HMA BASE COURSE WIDENING 8"	(I)	EXISTING HMA OVERLAY 4-3/4"	(4)	PROPOSED HMA SURFACE COURSE, MIX "C", N50 (1-1/2")
(E)	EXISTING HMA SHOULDER 8"	(J)	EXISTING PCC BASE COURSE WIDENING	(5)	PROPOSED HMA SHOULDERS (2 1/4")
				(6)	PROPOSED AGGREGATE WEDGE SHOULDER, TYPE B
				(7)	PROPOSED LONGITUDINAL JOINT SEALANT

MODEL Typical Sections  
FILE Name: s:\work\06EED\NTEC\Illinois.gov\PIWDOT\Documents\DOT\_Offices\Director\Projects\0672K59\CADD\data\CAD\sheet\0672K59-sh-04-tykal.dgn

	USER NAME = whitlingme		DESIGNED -	REVISED -	STATE OF ILLINOIS DEPARTMENT OF TRANSPORTATION	TYPICAL SECTIONS FAP 745 (IL 104)				F.A.P. RTE.	SECTION	COUNTY	TOTAL SHEETS	SHEET NO.
	DRAWN -		REVISD -	REVISD -						745	(104) RS-6, (105) RS-8	ADAMS	23	7
	PLOT SCALE = 6.0000 ' / in.		CHECKED -	REVISD -		SCALE: SHEET OF SHEETS STA. TO STA.				CONTRACT NO. 72K59				
	PLOT DATE = 3/21/2018		DATE -	REVISD -						ILLINOIS	FED. AID PROJECT	STP-CWLQ(560)		

**RIGHT TURN LANE**  
FAP 745 (IL 104) ONTO COLUMBUS ROAD  
LEFT STATION 622+03.14 TO LEFT STATION 625+33.14

**SUPER ELEVATION TRANSITION**  
STATION 613+94.03 - END NORMAL CROWN  
STATION 616+38.66 - ATTAIN FULL 8.0% SUPER ELEVATION  
STATION 626+34.56 - END FULL 8.0% SUPER ELEVATION  
STATION 628+79.19 - BEGIN NORMAL CROWN



**TYPICAL SECTION #5**  
FAP 745 (IL 104)  
STATION 611+49.98 TO STATION 630+70.00

**TYPICAL SECTION LEGEND**

- |                                                   |                                            |                                                           |
|---------------------------------------------------|--------------------------------------------|-----------------------------------------------------------|
| (A) EXISTING 9-6-9 PCC PAVEMENT                   | (F) EXISTING AGGREGATE SHOULDER, TYPE B 8" | (1) PROPOSED HMA SURFACE REMOVAL, 1-1/2"                  |
| (B) EXISTING HMA OVERLAY - 9-1/4"                 | (G) EXISTING HMA BASE COURSE 8"            | (2) PROPOSED HMA SURFACE REMOVAL, 2-1/4"                  |
| (C) EXISTING SUBBASE GRANULAR MATERIAL, TYPE A 4" | (H) EXISTING PIPE UNDERDRAIN 4"            | (3) PROPOSED LEVELING BINDER (MACHINE METHOD), N50 (3/4") |
| (D) EXISTING HMA BASE COURSE WIDENING 8"          | (I) EXISTING HMA OVERLAY 4-3/4"            | (4) PROPOSED HMA SURFACE COURSE, MIX "C", N50 (1-1/2")    |
| (E) EXISTING HMA SHOULDER 8"                      | (J) EXISTING PCC BASE COURSE WIDENING      | (5) PROPOSED HMA SHOULDERS (2 1/4")                       |
|                                                   |                                            | (6) PROPOSED AGGREGATE WEDGE SHOULDER, TYPE B             |
|                                                   |                                            | (7) PROPOSED LONGITUDINAL JOINT SEALANT                   |

MODEL Typical Sections  
FILE Name: s:\m\0407ED\INTEC\Illinois.gov\PIV\DOT\Documents\DOT Office\Bldg\DOT\Projects\0672K59\CADD\data\CAD\heats\0672K59-sh-04-typlcal.dgn

USER NAME = whitlingme	DESIGNED -	REVISED -
	DRAWN -	REVISED -
PLOT SCALE = 6.0000 ' / in.	CHECKED -	REVISED -
PLOT DATE = 3/21/2018	DATE -	REVISED -

**STATE OF ILLINOIS**  
**DEPARTMENT OF TRANSPORTATION**

**TYPICAL SECTIONS**  
**FAP 745 (IL 104)**

SCALE: SHEET OF SHEETS STA. TO STA.

F.A.P. RTE.	SECTION	COUNTY	TOTAL SHEETS	SHEET NO.
745	(104) RS-6, (105) RS-8	ADAMS	23	8
CONTRACT NO. 72K59				
ILLINOIS FED. AID PROJECT STP-CWLQ(560)				



MODEL Schedule.s  
FILE Name: p:\011084EID\NTEC\Illinois\gov\PIWDOT\Documents\DOT\_Offices\Director\Projects\0672K59\CADD\data\CAD\sheet\0672K59-sh-05-schedule.dgn

ROADWAY PAVING SCHEDULE											
							40600625 LEVELING BINDER (MACHINE METHOD) N50 (3/4")	40603310 HMA SURFACE COURSE MIX "C", N50 (1-1/2")	40600290 BITUMINOUS MATERIALS (TACK COAT)	44000155 HMA SURFACE REMOVAL 1-1/2 INCH	44000158 HMA SURFACE REMOVAL 2-1/4 INCH
ROADWAY	STATION	SIDE	TO	STATION	SIDE	DESCRIPTION	TON	TON	POUND	SQ YD	SQ YD
FAS 745 (IL 104)	535+05.77	LT	-	540+40.00	LT		30	60	481		712
	535+05.77	RT	-	540+40.00	RT		30	60	481		712
	540+40.00	LT	-	630+60.00	LT	DRIVING LANE	507	1014	8149	12073	
	540+40.00	RT	-	630+60.00	RT	DRIVING LANE	505	1010	8112	12018	
	564+18.43	RT	-	567+24.56	RT	RIGHT TURN LANE	15	30	241	356	
	611+49.98	CENTER	-	630+60.00	CENTER	CENTER MEDIAN & LEFT TURN LANES	86	171	1378	2041	
	622+03.14	LT	-	625+33.14	LT	RIGHT TURN LANE	13	26	213	315	
FAS 289A (COLUMBUS ROAD)	9+14.24	BOTH	-	9+70.42	BOTH	INTERSECTION WITH IL 104	55	110	887		1314
TR 300A (1900TH ST)	15+13.72	BOTH	-	15+92.03	BOTH	INTERSECTION WITH IL 104	13	26	213	315	
TOTAL =							1254	2508	20154	27119	2738

SHOULDER PAVING SCHEDULE									
						48203100 HOT-MIX ASPHALT SHOULDERS (2-1/4" DEPTH)	40600290 BITUMINOUS MATERIALS (TACK COAT)	44000155 HMA SURFACE REMOVAL 1-1/2 INCH	44000158 HMA SURFACE REMOVAL 2-1/4 INCH
ROADWAY	STATION	SIDE	TO	STATION	SIDE	TON	POUND	SQ YD	SQ YD
IL ROUTE 104	535+05.77	LT	-	535+53.38	LT	3	10		21
	536+77.65	LT	-	539+04.98	LT	13	46		102
	640+16.09	LT	-	540+40.00	LT	1	5		11
	540+40.00	LT	-	619+21.98	RT	442	1578	3507	
	619+21.98	LT	-	8+14.24	RT	11	39		86
	8+14.24	LT	-	622+03.14	LT	14	49		110
	622+03.14	LT	-	630+60.00	LT	49	175	388	
	535+05.77	RT	-	540+00.00	RT	30	107		237
	540+00.00	RT	-	566+86.49	RT	148	530	1177	
	567+24.56	RT	-	15+92.03	RT	306	1091	2425	
	15+92.03	LT	-	630+60.00	RT	54	193	428	
TOTAL =						1070	3821	7925	566

ENTRANCE SCHEDULE								
					40200800 AGGREGATE SURFACE COURSE TYPE B	40800050 INCIDENTAL HOT-MIX ASPHALT SURFACING	4060982 HOT-MIX ASPHALT SURFACE REMOVAL BUTT- JOINT	40600290 BITUMINOUS MATERIALS (TACK COAT)
STATION	SIDE	TO	TYPE	MATERIAL	TON	TON	SQ YD	POUND
567+91.64	LT	-	FE	HMA		4.2	50.1	22.6
554+17.61	RT	-	FE	AGG	1.7			
586+37.16	LT	-	FE	AGG	1.8			
593+86.17	RT	-	FE	AGG	3.8			
594+21.24	LT	-	FE	AGG	1.5			
606+24.20	RT	-	PE	AGG	4.4			
607+42.59	RT	-	PE	AGG	3.0			
611+10.32	RT	-	FE	AGG	3.2			
8+62.19	RT	-	FE	AGG	3.0			
TOTAL =					22.3	4.2	50.1	22.6

BUTT JOINT SCHEDULE								
						40800050 INCIDENTAL HOT-MIX ASPHALT SURFACING	4060982 HOT-MIX ASPHALT SURFACE REMOVAL BUTT- JOINT	40600290 BITUMINOUS MATERIALS (TACK COAT)
ROADWAY	STATION	SIDE	TO	STATION	SIDE	TON	SQ YD	POUND
FAS 745 (IL 104)	534+90.77	BOTH	-	535+05.77	BOTH	6	53	24.0
	566+86.49	RT	-	567+09.56	RT	2	24	11
	630+60.00	BOTH	-	630+75.00	BOTH	6	55	25
COLUMBUS ROAD (E 1900TH RD)	8+04.25	BOTH	-	8+14.24	BOTH	4	36	16
TR 300A (E 1900TH RD)	15+92.03	BOTH	-	16+02.03	BOTH	2	22	10
TOTAL =						20	190	85

	USER NAME = whitlingme	DESIGNED -	REVISED -	STATE OF ILLINOIS DEPARTMENT OF TRANSPORTATION	SCHEDULE OF QUANTITIES			F.A.P. RTE.	SECTION	COUNTY	TOTAL SHEETS	SHEET NO.
		DRAWN -	REVISED -					745	(104) RS-6, (105) RS-8	ADAMS	23	9
	PLOT SCALE = 40,0000 ' / in.	CHECKED -	REVISED -					CONTRACT NO. 72K59				
	PLOT DATE = 3/21/2018	DATE -	REVISED -		SCALE:	SHEET	OF	SHEETS	STA.	TO STA.	ILLINOIS   FED. AID PROJECT   STP-CWLQ(560)	

MODEL: Schedules  
FILE: \\mnp2-prod\illnet\cgl\links\gov\p\WIDOT\Documents\DOT\_Offices\Illndot\_@Projects\0672K59\Cadd\data\CD-sheets\0672K59-sh-05-schedule.dgn

40600990 - TEMPORARY RAMP				
ROADWAY	STATION	SIDE	LENGTH	SQ YD
FAS 745 (IL 104)	535+05.77	BOTH	7.5	20
	630+60.00	BOTH	5.0	14
TR 296 (1800TH ROAD)	566+99.52	BOTH	5.0	14
TR 300A (1900TH ROAD)	15+92.03	BOTH	5.0	11
FAS 589A (COLUMBUS ROAD)	8+14.24	BOTH	7.5	27
TOTAL =				86

70300100 - SHORT TERM PAVEMENT MARKING						
ROADWAY	DESCRIPTION	STATION	SIDE	TO	STATION	FOOT
FAS 745 (IL 104)	CENTERLINE	534+85.77	CENTER	-	611+49.98	2299
	RIGHT TURN LANE	565+48.42	RT	-	566+64.56	35
	CENTER MEDIAN	611+49.98	CENTER	-	618+20.00	403
	CENTERLINE	618+20.00	LT	-	620+61.54	73
	LEFT TURN LANE	618+30.23	CENTER	-	620+61.54	70
	CENTERLINE	621+26.41	CENTER	-	622+80.00	46
	LEFT TURN LANE	620+99.30	LT	-	622+69.97	52
	RIGHT TURN LANE	621+00.23	LT	-	623+33.64	72
TR 589A (COLUMBUS ROAD)	CENTER MEDIAN	622+80.00	CENTER	-	630+80.00	482
	CENTER MEDIAN	8+04.24	CENTER	-	9+3.91	79
TOTAL =						3611

70300150 - SHORT TERM PAVEMENT MARKING REMOVAL							
ROADWAY	DESCRIPTION	STATION	SIDE	TO	STATION	SIDE	SQ FT
FAS 745 (IL 104)	CENTERLINE	534+85.77	CENTER	-	611+49.98	CENTER	255
	RIGHT TURN LANE	565+48.42	RT	-	566+64.56	RT	4
	CENTER MEDIAN	611+49.98	CENTER	-	618+20.00	LT	45
	CENTERLINE	618+20.00	LT	-	620+61.54	LT	8
	LEFT TURN LANE	618+30.23	CENTER	-	620+61.54	CENTER	8
	CENTERLINE	621+26.41	CENTER	-	622+80.00	CENTER	5
	LEFT TURN LANE	620+99.30	LT	-	622+69.97	LT	6
	RIGHT TURN LANE	621+00.23	LT	-	623+33.64	LT	8
TR 589A (COLUMBUS ROAD)	CENTER MEDIAN	622+80.00	CENTER	-	630+80.00	CENTER	54
	CENTER MEDIAN	8+04.24	CENTER	-	9+3.91	CENTER	9
TOTAL =							401

48102100 - AGGREGATE WEDGE SHOULDER, TYPE B						
ROADWAY	STATION	SIDE	TO	STATION	SIDE	TONS
FAS 745 (IL 104)	534+95.77	LT	-	535+87.53	LT	4
	536+49.02	LT	-	539+36.72	LT	12
	539+96.80	LT	-	554+07.61	LT	59
	554+17.61	LT	-	567+69.64	LT	56
	568+13.64	LT	-	586+24.17	LT	75
	586+45.44	LT	-	594+12.43	LT	32
FAS 745 (IL 104)/TR 589A (COLUMBUS RD)	594+30.24	LT		8+14.24	RT	112
TR 589A (COLUMBUS ROAD)	8+14.24	LT		8+43.30	LT	1
TR 589A (COLUMBUS RD)/IL ROUTE 104	8+80.85	LT	-	530+70.00	LT	44
FAS 745 (IL 104)	534+95.77	RT	-	566+76.89	RT	133
	567+25.45	RT	-	593+62.23	RT	110
	594+10.84	RT	-	605+95.72	RT	49
	606+52.13	RT	-	607+23.35	RT	3
	607+60.96	RT	-	610+90.09	RT	14
FAS 745 (IL 104)/TR 300A (1900TH ROAD)	611+30.89	RT	-	15+92.03	RT	42
TR 300A (1900TH ROAD/FAS 745 (IL 104)	15+92.03	LT	-	630+70.00	RT	40
TOTAL =						786

78004280 - PREFORMED PLASTIC PAVEMENT MARKING, TYPE B - INLAID - LINE 24"				
ROADWAY	DESCRIPTION	STATION	SIDE	FOOT
TR 589A (COLUMBUS ROAD)	STOP BAR	9+24.37	RT	22
	STOP BAR	9+26.61	RT	12
TOTAL =				34

78200020 - CURB REFLECTORS				
STATION	TO	STATION	LOCATION	EACH
620+19.00	-	621+42.00	NW ISLAND MEDIAN	11
620+97.00	-	515+97.00	NE ISLAND MEDIAN	13
COMBINED TOTAL =				24

78100100 - RAISED REFLECTIVE PAVEMENT MARKERS					
STATION	TO	STATION	LOCATION	AMBER	CRYSTAL
534+85.77	-	535+30.77	DOUBLE YELLOW - CENTERLINE	4	
535+30.77	-	606+49.98	10' DASH 30' SKIP YELLOW - CENTERLINE	89	
565+48.42	-	566+64.56	6" SOLID WHITE - RIGHT TURN LANE		4
606+49.98	-	611+49.98	DOUBLE YELLOW - CENTERLINE	26	
611+49.98	-	618.20.00	DOUBLE YELLOW - CENTER MEDIAN MEDIAN	32	
618+20.00	-	620+61.54	DOUBLE YELLOW - CENTERLINE	14	
618+30.23	-	620+61.54	6" SOLID WHITE - TURN LANE		7
620+05.50	-	620+54.96	8" SOLID WHITE - ISLAND MEDIAN		2
621+26.41	-	622+80.00	DOUBLE YELLOW - CENTERLINE	8	
620+99.30	-	622+69.97	6" SOLID WHITE - TURN LANE		6
621+00.23	-	621+67.49	8" SOLID WHITE - ISLAND MEDIAN		2
621+67.49	-	623+33.64	6" SOLID WHITE - RIGHT TURN LANE		5
622+80.00	-	630+80.00	DOUBLE YELLOW - CENTER MEDIAN MEDIAN	42	
TOTALS =				215	26

PAVEMENT PATCHING SCHEDULE			
LOCATION	LENGTH	WIDTH	44200202
			PAVEMENT PATCHING
			TYPE 11, 17 INCH
			SQ YD
LOCATIONS DETERMINED BY ENGINEER	VARIES	VARIES	90.0
TOTAL =			90.0

Z0033700 - LONGITUDINAL JOINT SEALANT								
ROADWAY	STATION	OFFSET	SIDE	TO	STATION	OFFSET	SIDE	FOOT
FAS 745 (IL 104)	534+90.77	0.0	CENTER	-	630+75.00	0.0	CENTER	9585
	564+18.43	12.0	RT	-	567+24.56	12.0	RT	306
	611+49.98	0.0	CENTER	-	615+69.99	12.0	LT	420
	615+69.99	12.0	LT	-	627+03.05	12.0	LT	1146
	627+03.05	12.0	LT	-	630+75.00	0.0	CENTER	372
	621+67.49	24.0	LT	-	625+33.14	24.0	LT	374
TOTAL =								12203

66700205 - PERMANENT SURVEY MARKERS, TYPE I				
ROADWAY	STATION	OFFSET	SIDE	EACH
FAP 745 (IL 104)	540+34.71	2.2	RT	1
	541+17.20	2.1	RT	1
	566+98.54	2.6	LT	1
COLUMBUS ROAD	8+73.42	3.3	LT	1
TOTAL =				4

	USER NAME = whitlingme	DESIGNED -	REVISED -	STATE OF ILLINOIS DEPARTMENT OF TRANSPORTATION	SCHEDULE OF QUANTITIES			F.A.P. RTE.	SECTION	COUNTY	TOTAL SHEETS	SHEET NO.
		DRAWN -	REVISED -					745	(104) RS-6, (105) RS-8	ADAMS	23	10
	PLOT SCALE = 40,0000 ' / in.	CHECKED -	REVISED -					CONTRACT NO. 72K59				
	PLOT DATE = 3/21/2018	DATE -	REVISED -					ILLINOIS FED. AID PROJECT STP-CWLQ(560)				
SCALE:		SHEET	OF	SHEETS	STA.	TO STA.						

MODEL Schedule  
FILE Name: p:\011084E8ID\NTEC\Illinois\gov\PIV\DOT\Documents\DOT\_Offices\Bldgct\0672K59\CADD\data\CAD\sheet\0672K59-sh-05-schedule.dgn

78009005 – MODIFIED URETHANE PAVEMENT MARKING – LINE 5”									
ROADWAY	DESCRIPTION	STATION	OFFSET	SIDE	TO	STATION	OFFSET	SIDE	FOOT
FAS 745 (IL 104)	SOLID WHITE - EDGE LINE	534+85.77	24.0	LT	-	619.82.96	36.0	LT	8509
	SOLID WHITE - EDGE LINE	622+03.14	36.0	LT	-	630+79.98	12.0	LT	892
	SOLID WHITE - EDGE LINE	534+85.77	12.0	RT	-	566+64.56	24.0	RT	3180
	SOLID WHITE - EDGE LINE	567+24.56	12.0	RT	-	620+31.75	12.0	RT	5311
	SOLID DOUBLE YELLOW - CENTERLINE	534+85.77	0.0	CENTER	-	535+30.77	0.0	CENTER	90
	10' SKIPE 40' DASH YELLOW - CENTERLINE	535+30.77	0.0	CENTER	-	606+49.98	0.0	CENTER	1780
	SOLID YELLOW - NO PASSING	538+67.00		RT	-	542+77.00		RT	410
	SOLID YELLOW - NO PASSING	546+42.00		LT	-	552+42.00		LT	600
	SOLID YELLOW - NO PASSING	559+18.00		RT	-	568+00.00		RT	882
	SOLID YELLOW - NO PASSING	570+17.00		LT	-	577+42.00		LT	725
	SOLID DOUBLE YELLOW - CENTERLINE	606+49.98	0.0	CENTER	-	611+49.88	0.0	CENTER	1000
	SOLID DOUBLE YELLOW - CENTER MEDIAN	611+49.88	0.0	CENTER	-	618.20.00	12.0	LT	2690
	SOLID DOUBLE YELLOW - CENTERLINE	618+20.00	12.0	LT	-	620+61.54	12.0	LT	488
	SOLID DOUBLE YELLOW - CENTERLINE	621+26.41	0.0	RT	-	622+80.00	0.0	RT	308
	SOLID DOUBLE YELLOW - CENTER MEDIAN	622+80.00	0.0	RT	-	630+80.00	0.0	RT	3210
FAS 589A (COLUMBUS ROAD)	SOLID WHITE - EDGE LINE	8+04.26	15.3	RT	-	9+18.08	78.8	RT	147
	SOLID WHITE - EDGE LINE	8+04.26	15.3	LT	-	10+00.00	115.9	LT	263
	SOLID DOUBLE YELLOW - CENTER MEDIAN	8+04.24		BOTH	-	9+33.91		BOTH	528
TR 300A (1900TH ROAD)	SOLID WHITE - EDGE LINE	15+00.00	52.0	RT	-	15+92.03	9.5	RT	123
	SOLID WHITE - EDGE LINE	15+52.40	64.5	LT	-	15+92.03	9.5	LT	87
TOTAL =									31223

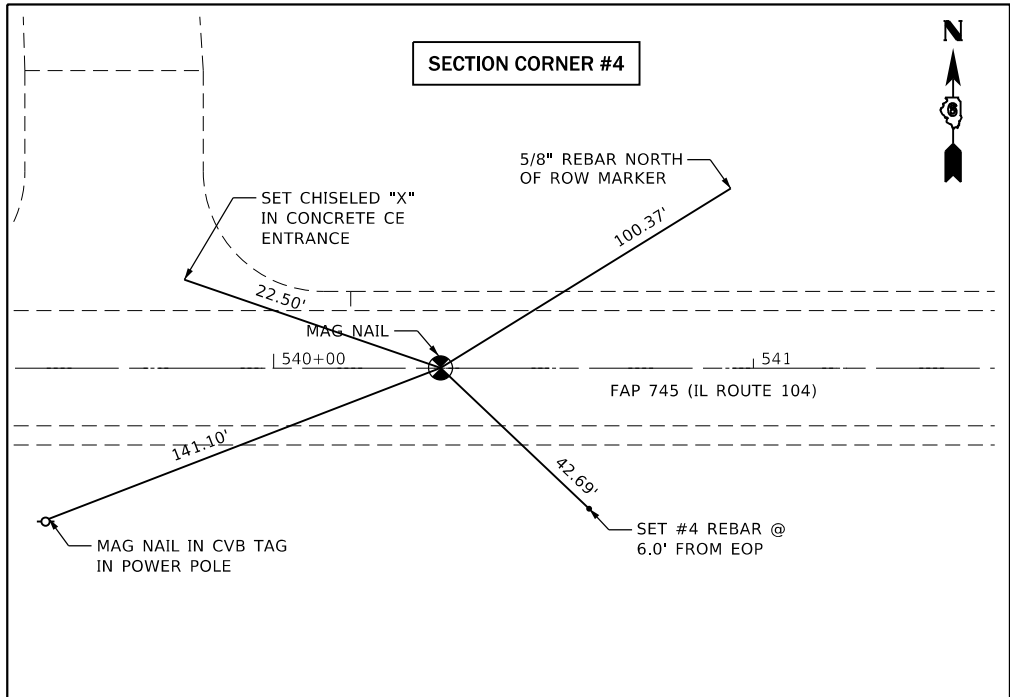
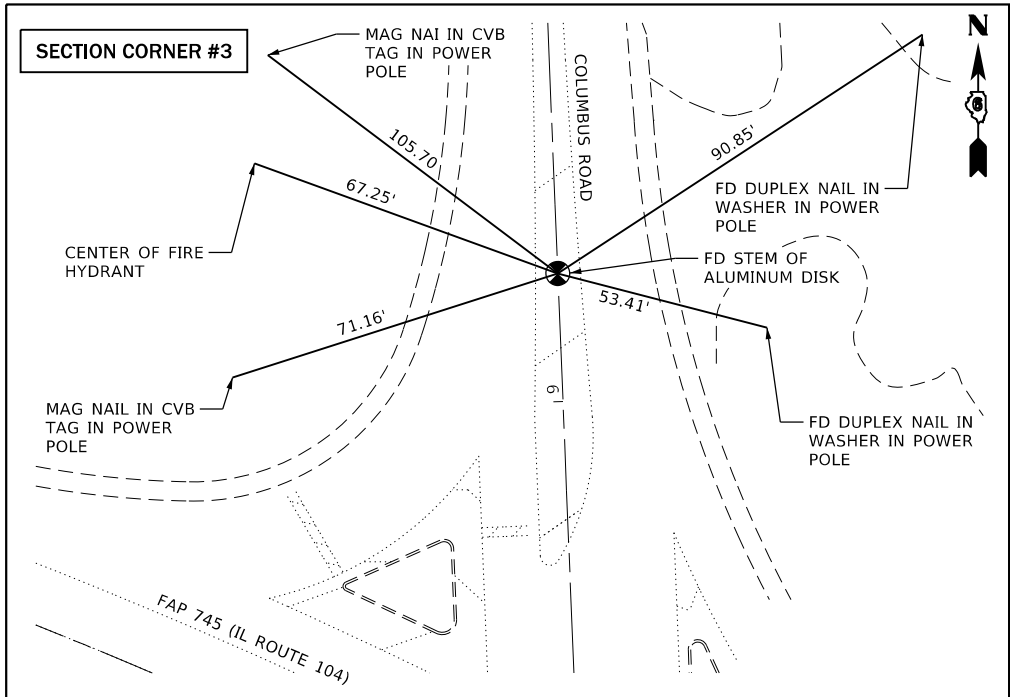
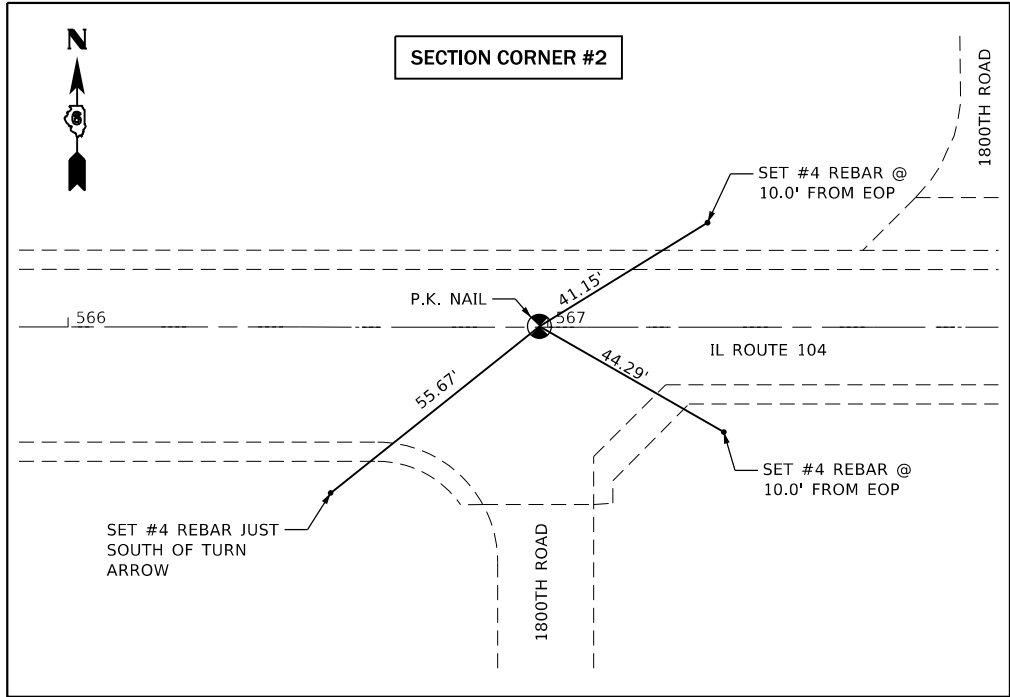
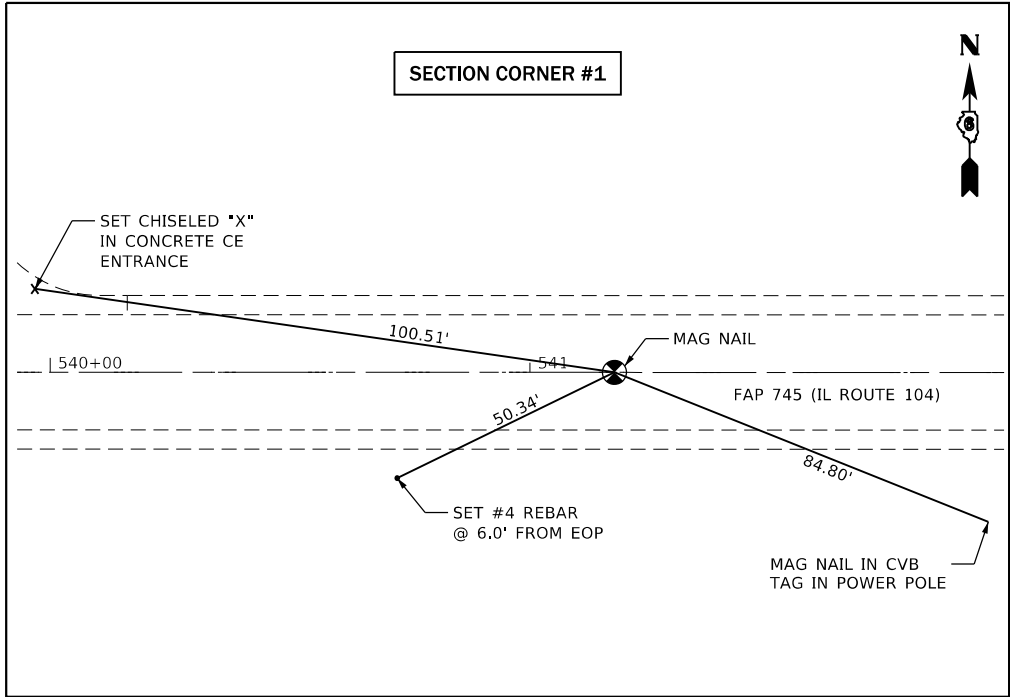
78009008 – MODIFIED URETHANE PAVEMENT MARKING – LINE 8”					
ROADWAY	DESCRIPTION	STATION	TO	STATION	FOOT
FAS 745 (IL 104) AND FAS 589A (COLUMBUS ROAD) INTERSECTION	SOLID WHITE - NW ISLAND	620+05.50	-	620+54.96	157
	SOLID WHITE - NE ISLAND	621+00.23	-	621+67.49	238
TOTAL =					395

78009012 – MODIFIED URETHANE PAVEMENT MARKING – LINE 12”					
ROADWAY	DESCRIPTION	STATION	TO	STATION	FOOT
FAS 745 (IL 104)	DIAGONALS - CENTER MEDIAN	611+49.98	-	618+20.00	163
	DIAGONALS - CENTER MEDIAN	622+80.00	-	630+80.00	226
	DIAGONALS - NW ISLAND	620+05.50	-	620+54.96	48
	DIAGONAL - NE ISLAND	621+00.23	-	621+67.49	73
FAS 589A (COLUMBUS ROAD)	DIAGONALS - CENTER MEDIAN	8+04.24	-	9+33.91	40
TOTAL =					550

78004200 – PREFORMED PLASTIC PAVEMENT MARKING, TYPE B – INLAID – LETTER AND SYMBOLS					
ROADWAY	DESCRIPTION	STATION	OFFSET	SIDE	SQ FT
FAS 745 (IL 104)	RIGHT TURN ARROW	656+55.33	18.0	RT	15.6
	RIGHT TURN ARROW	566+60.00	18.0	RT	15.6
	RIGHT TURN ARROW	618+06.00	18.0	LT	15.6
	RIGHT TURN ARROW	619+36.00	18.0	LT	15.6
	RIGHT TURN ARROW	620+59.00	18.0	LT	15.6
	LEFT TURN ARROW	621+35.00	6.0	LT	15.6
	LEFT TURN ARROW	622+47.00	6.0	LT	15.6
	RIGHT TURN ARROW	622+32.00	30.0	LT	15.6
	RIGHT TURN ARROW	523+15.00	30.0	LT	15.6
TOTAL =					140.4

78009006 – MODIFIED URETHANE PAVEMENT MARKING – LINE 6”									
ROADWAY	DESCRIPTION	STATION	OFFSET	SIDE	TO	STATION	OFFSET	SIDE	FOOT
FAS 745 (IL 104)	2' DASH 2' SKIP - WHITE	564+18.43	12.0	RT	-	565+48.42	12.0	RT	66
	SOLID WHITE	565+48.42	12.0	RT	-	566+64.56	12.0	RT	116
	2' DASH 2' SKIP - WHITE	617+00.00	0.0	RT	-	618+30.49	0.0	RT	66
	SOLID WHITE	618+30.49	0.0	RT	-	620+61.54	0.0	RT	232
	SOLID WHITE	620+26.41	12.0	LT	-	622+69.97	12.0	LT	145
	2' DASH 2' SKIP - WHITE	622+69.97	12.0	LT	-	624+44.02	12.0	LT	88
	SOLID WHITE	621+67.49	24.0	LT	-	623+33.64	24.0	LT	170
	2' DASH 2' SKIP - WHITE	623+33.64	24.0	LT	-	625+33.14	24.0	LT	102
TOTAL =									985

	USER NAME = whitlingme	DESIGNED -	REVISED -	STATE OF ILLINOIS DEPARTMENT OF TRANSPORTATION	SCHEDULE OF QUANTITIES			F.A.P. RTE.	SECTION	COUNTY	TOTAL SHEETS	SHEET NO.
		DRAWN -	REVISED -					745	(104) RS-6, (105) RS-8	ADAMS	23	11
	PLOT SCALE = 40,0000 ' / in.	CHECKED -	REVISED -					CONTRACT NO. 72K59				
	PLOT DATE = 3/21/2018	DATE -	REVISED -		SCALE:	SHEET	OF	SHEETS	STA.	TO STA.	ILLINOIS FED. AID PROJECT STP-CWLQ(560)	




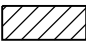
SECTION CORNER SCHEDULE						
POINT#	NORTHING	EASTING	DESCRIPTION	MONUMENT	TYPE	66700205 PERMANENT SURVEY MARKER, TYPE I EACH
1	1191113.708	2013842.708	SOUTH ¼ COR, SEC 35, T1S, R7W, 4TH P.M. ADAMS COUNTY	MAG NAIL	1	1
2	1191075.043	2016423.405	N.W. COR, SEC 1, T2S, R7W, 4TH P.M. ADAMS COUNTY	P.K. NAIL	1	1
3	1190982.264	2021790.491	N.E. COR, SEC 1, T2S, R7W, 4TH P.M. ADAMS COUNTY	ALUMINUM STEM	1	1
4	1191115.049	2013760.170	NORTH ¼ COR, SEC 2, T2S, R7W, 4TH P.M. ADAMS COUNTY	MAG NAIL	1	1
TOTAL =						4
NOTE: NAD83/2011adj.						

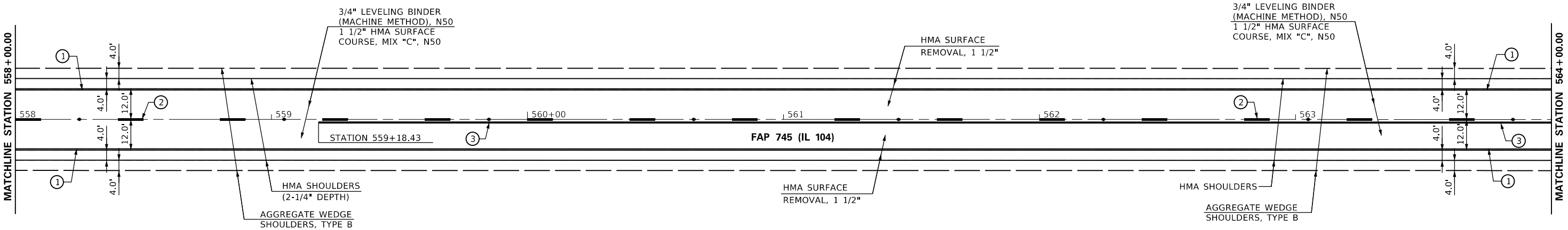
MODEL 01 Permanent Survey Markers  
FILE NAME: p:\work\EDINT\CS\mns\gov\PIV\DOT\Documents\DOT\_Offices\Bldg\DOT\_CADD\data\CAD\sheet\0672K59-sh-06-sched.dgn

	USER NAME   = whittingme	DESIGNED   -	REVISED   -	STATE OF ILLINOIS DEPARTMENT OF TRANSPORTATION	PERMANENT SURVEY MARKERS					F.A.P. RTE.	SECTION		COUNTY	TOTAL SHEETS	SHEET NO.
		DRAWN    -	REVISED   -							745	(104) RS-6, (105) RS-8		ADAMS	23	12
	PLOT SCALE   = 40,0000 ' / in.	CHECKED   -	REVISED   -							CONTRACT NO. 72K59					
	PLOT DATE    = 3/21/2018	DATE       -	REVISED   -		SCALE:	SHEET	OF	SHEETS	STA.	TO STA.					
												ILLINOIS	FED. AID PROJECT	STP-CWLQ(560)	

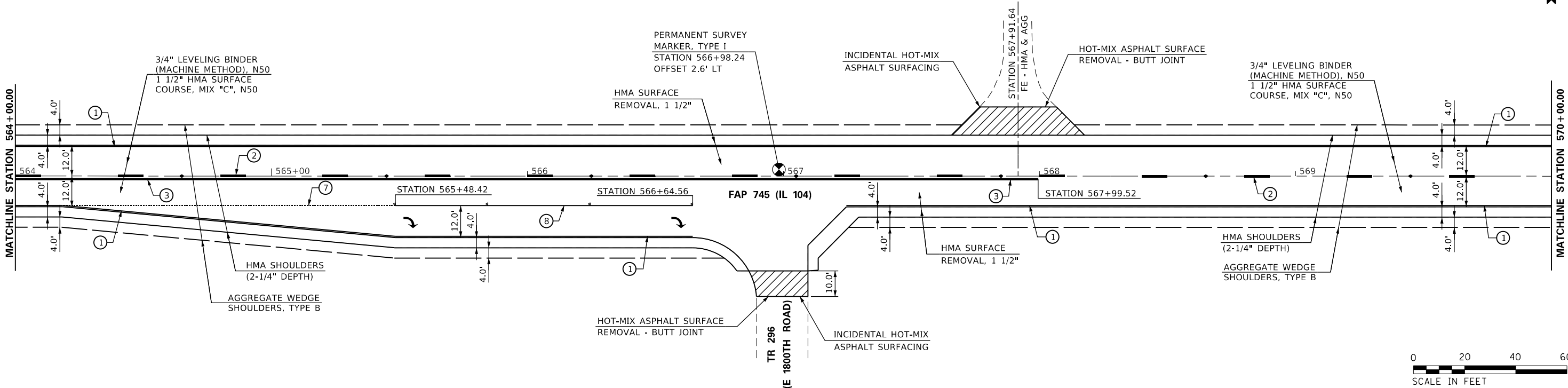




LEGEND	
	LIMITS OF HOT-MIX ASPHALT SURFACE REMOVAL, 2 1/4"
	LIMITS OF HOT-MIX ASPHALT SURFACE REMOVAL - BUTT JOINT



PAVEMENT MARKING LEGEND	
① MODIFIED URETHANE PAVEMENT MARKING - LINE 5" (EDGE LINE - WHITE)	⑧ MODIFIED URETHANE PAVEMENT MARKING - LINE 6" (SINGLE SOLID - WHITE)
② MODIFIED URETHANE PAVEMENT MARKING - LINE 5" (10' DASH 30' SKIP - YELLOW)	⑨ PREFORMED PLASTIC PAVEMENT MARKING, TYPE B - INLAID - LINE 24" (STOP BAR - WHITE)
③ MODIFIED URETHANE PAVEMENT MARKING - LINE 5" (SINGLE SOLID - YELLOW)	➡ PREFORMED PLASTIC PAVEMENT MARKING, TYPE B - INLAID - LETTERS AND SYMBOLS (ARROWS AT 15.6 SQ FT - WHITE)
④ MODIFIED URETHANE PAVEMENT MARKING - LINE 5" (DOUBLE @ 13" CENTERS - YELLOW)	▷ RAISED REFLECTIVE PAVEMENT MARKER (ONE-WAY CRYSTAL)
⑤ MODIFIED URETHANE PAVEMENT MARKING - LINE 8" (SINGLE SOLID - WHITE)	▶ RAISED REFLECTIVE PAVEMENT MARKER (ONE-WAY AMBER)
⑥ MODIFIED URETHANE PAVEMENT MARKING - LINE 12" (DIAGONALS - WHITE)	◆ RAISED REFLECTIVE PAVEMENT MARKER (TWO-WAY AMBER)
⑦ MODIFIED URETHANE PAVEMENT MARKING - LINE 6" (2' DASH 2' SKIP - WHITE)	



USER NAME = whitlingme	DESIGNED -	REVISED -
	DRAWN -	REVISED -
PLOT SCALE = 40,0000 ' / in.	CHECKED -	REVISED -
PLOT DATE = 3/21/2018	DATE -	REVISED -

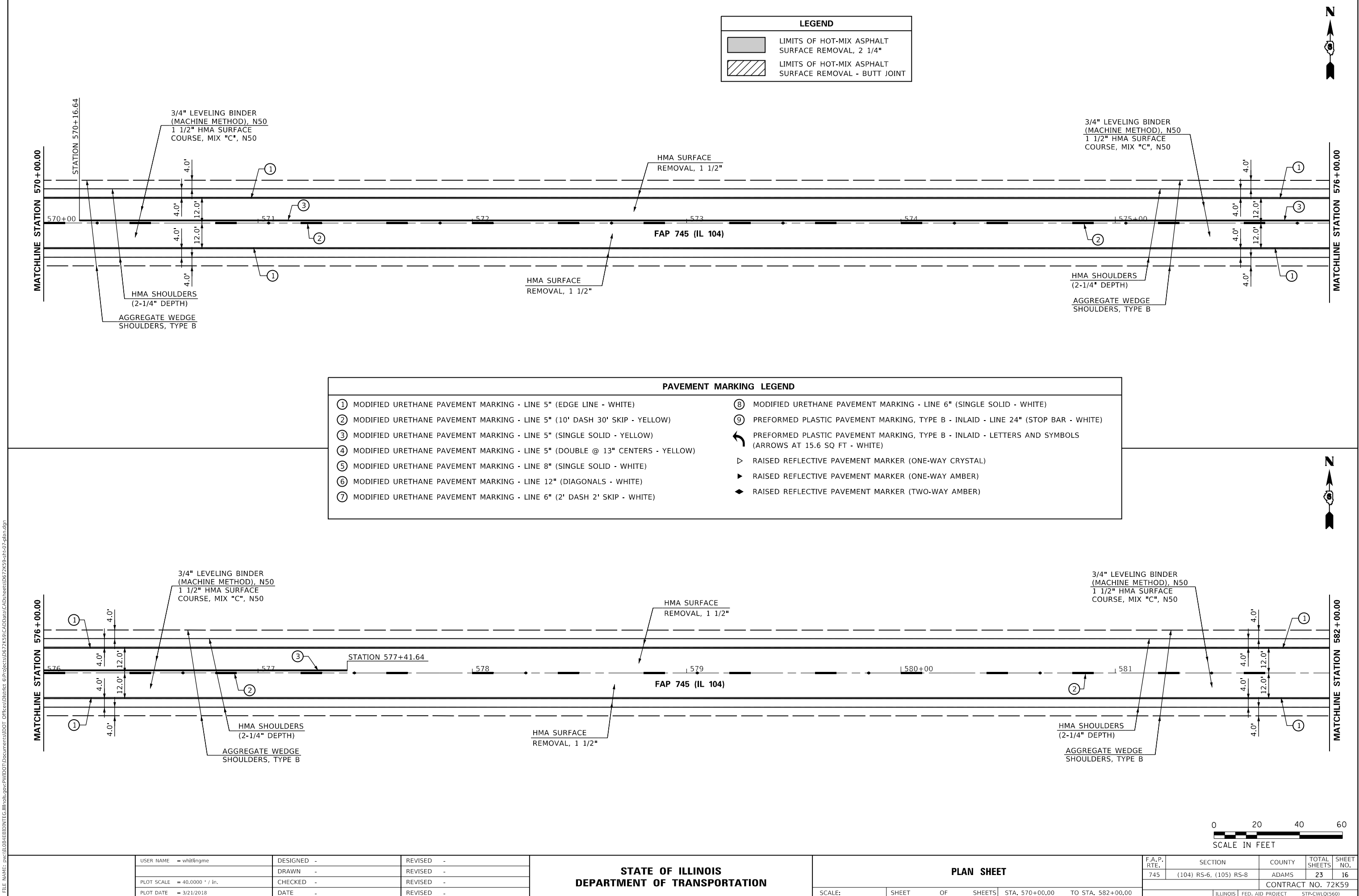
STATE OF ILLINOIS  
DEPARTMENT OF TRANSPORTATION

PLAN SHEET

SCALE: SHEET OF SHEETS STA. 558+00.00 TO STA. 570+00.00

F.A.P. RTE.	SECTION	COUNTY	TOTAL SHEETS	SHEET NO.
745	(104) RS-6, (105) RS-8	ADAMS	23	15
CONTRACT NO. 72K59				
ILLINOIS FED. AID PROJECT STP-CWLQ(560)				

MODEL PLAN SHEET 04  
FILE NAME: p:\a\108\08\ED\IND\TEC\Illinois.gov\PH\DOT\Documents\1DDOT\_Offices\1DDOT\Documents\1DDOT\_CADD\data\CAD\sheet0672K59-sh-072plan.dgn



LEGEND

LIMITS OF HOT-MIX ASPHALT SURFACE REMOVAL, 2 1/4"

LIMITS OF HOT-MIX ASPHALT SURFACE REMOVAL - BUTT JOINT

PAVEMENT MARKING LEGEND

①

MODIFIED URETHANE PAVEMENT MARKING - LINE 5" (EDGE LINE - WHITE)

②

MODIFIED URETHANE PAVEMENT MARKING - LINE 5" (10' DASH 30' SKIP - YELLOW)

③

MODIFIED URETHANE PAVEMENT MARKING - LINE 5" (SINGLE SOLID - YELLOW)

④

MODIFIED URETHANE PAVEMENT MARKING - LINE 5" (DOUBLE @ 13" CENTERS - YELLOW)

⑤

MODIFIED URETHANE PAVEMENT MARKING - LINE 8" (SINGLE SOLID - WHITE)

⑥

MODIFIED URETHANE PAVEMENT MARKING - LINE 12" (DIAGONALS - WHITE)

⑦

MODIFIED URETHANE PAVEMENT MARKING - LINE 6" (2' DASH 2' SKIP - WHITE)

⑧

MODIFIED URETHANE PAVEMENT MARKING - LINE 6" (SINGLE SOLID - WHITE)

⑨

PREFORMED PLASTIC PAVEMENT MARKING, TYPE B - INLAID - LINE 24" (STOP BAR - WHITE)

PREFORMED PLASTIC PAVEMENT MARKING, TYPE B - INLAID - LETTERS AND SYMBOLS (ARROWS AT 15.6 SQ FT - WHITE)

RAISED REFLECTIVE PAVEMENT MARKER (ONE-WAY CRYSTAL)

RAISED REFLECTIVE PAVEMENT MARKER (ONE-WAY AMBER)

RAISED REFLECTIVE PAVEMENT MARKER (TWO-WAY AMBER)



USER NAME	= whitlingme	DESIGNED	-	REVISED	-
		DRAWN	-	REVISED	-
PLOT SCALE	= 40,0000 ' / in.	CHECKED	-	REVISED	-
PLOT DATE	= 3/21/2018	DATE	-	REVISED	-

STATE OF ILLINOIS  
DEPARTMENT OF TRANSPORTATION

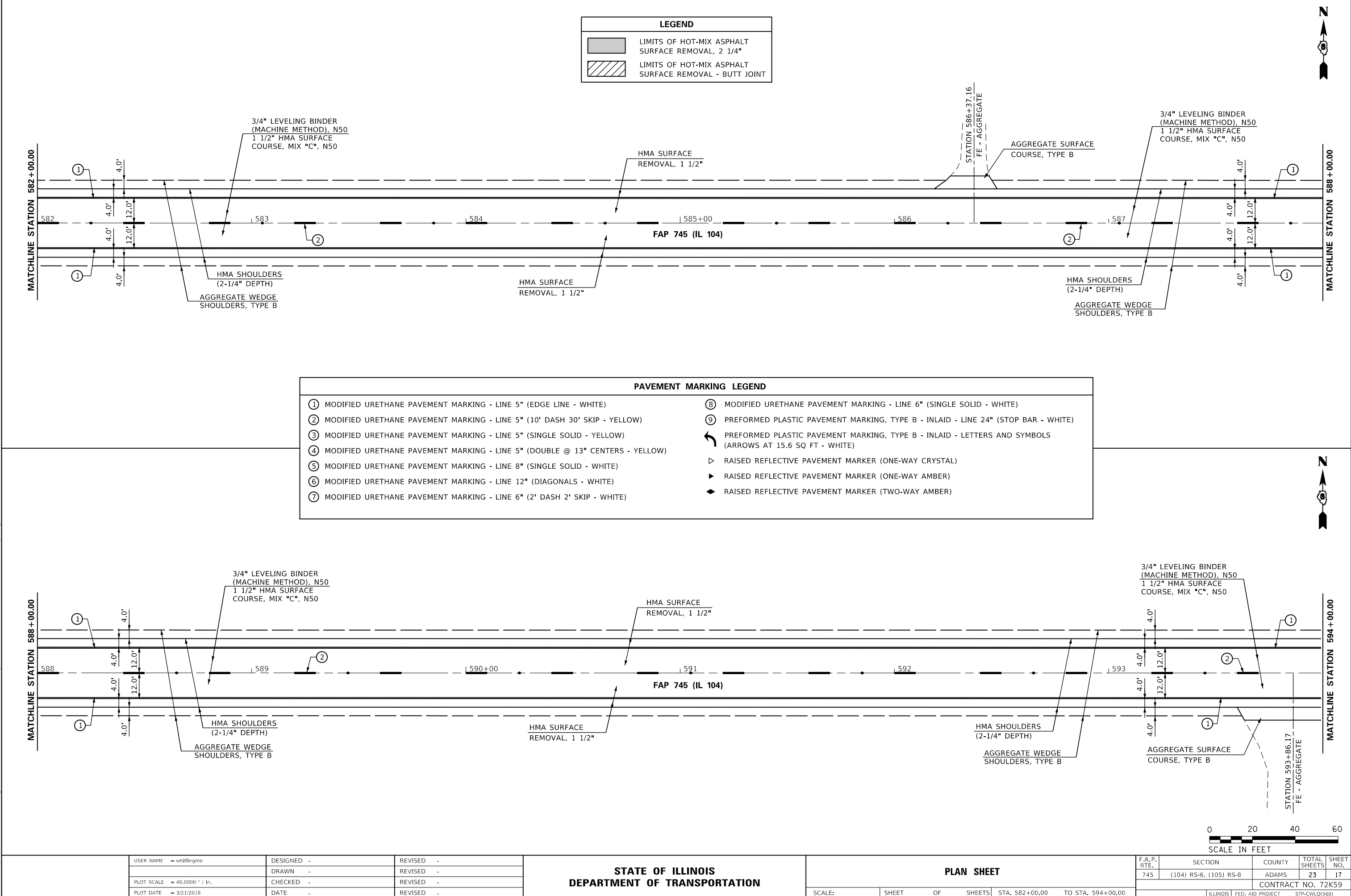
PLAN SHEET

SCALE: SHEET OF SHEETS STA. 570+00.00 TO STA. 582+00.00

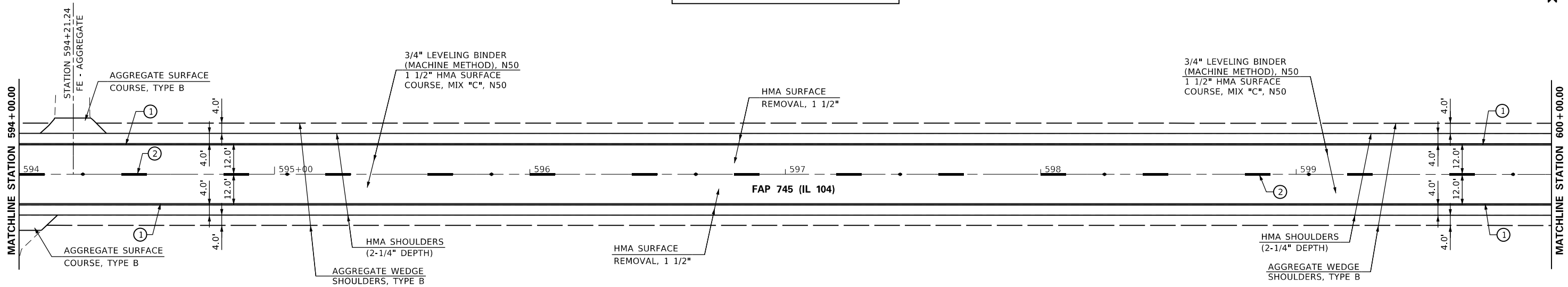
F.A.P. RTE.	SECTION	COUNTY	TOTAL SHEETS	SHEET NO.
745	(104) RS-6, (105) RS-8	ADAMS	23	16
CONTRACT NO. 72K59				
ILLINOIS FED. AID PROJECT STP-CWLQ(560)				



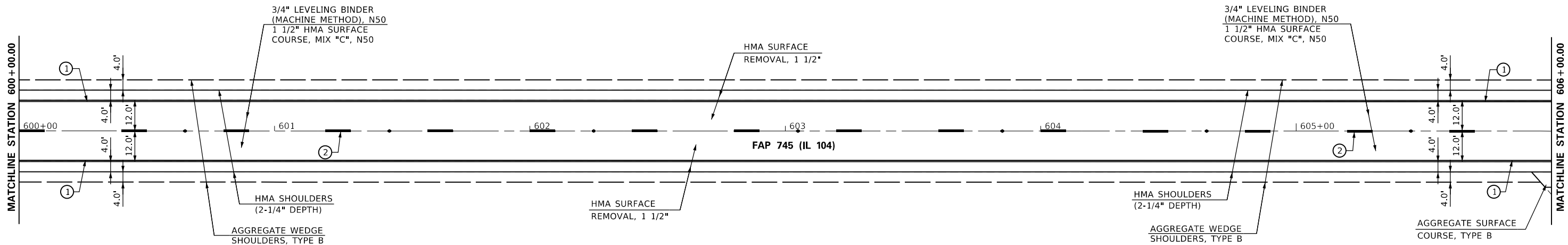
MODEL PLAN SHEET 05  
FILE NAME: p:\a\1084\ED\INDITEC\Illinois.gov\PHWDOT\Documents\1DDOT\_Offices\1DDOT\Documents\1DDOT\_CADD\data\CAD\sheet\0672K59-sh-07-plan.dgn



MODEL PLAN SHEET 05  
FILE NAME: p:\a\0848\ED\INT\EG\Illinois.gov\PH\DOT\Documents\1\DOT\_Offices\District 8\Projects\0672\K59\CADD\data\CAD\sheet\0672\K59-sh-07-plan.dgn



PAVEMENT MARKING LEGEND	
① MODIFIED URETHANE PAVEMENT MARKING - LINE 5" (EDGE LINE - WHITE)	⑧ MODIFIED URETHANE PAVEMENT MARKING - LINE 6" (SINGLE SOLID - WHITE)
② MODIFIED URETHANE PAVEMENT MARKING - LINE 5" (10' DASH 30' SKIP - YELLOW)	⑨ PREFORMED PLASTIC PAVEMENT MARKING, TYPE B - INLAID - LINE 24" (STOP BAR - WHITE)
③ MODIFIED URETHANE PAVEMENT MARKING - LINE 5" (SINGLE SOLID - YELLOW)	↩ PREFORMED PLASTIC PAVEMENT MARKING, TYPE B - INLAID - LETTERS AND SYMBOLS (ARROWS AT 15.6 SQ FT - WHITE)
④ MODIFIED URETHANE PAVEMENT MARKING - LINE 5" (DOUBLE @ 13" CENTERS - YELLOW)	▷ RAISED REFLECTIVE PAVEMENT MARKER (ONE-WAY CRYSTAL)
⑤ MODIFIED URETHANE PAVEMENT MARKING - LINE 8" (SINGLE SOLID - WHITE)	▶ RAISED REFLECTIVE PAVEMENT MARKER (ONE-WAY AMBER)
⑥ MODIFIED URETHANE PAVEMENT MARKING - LINE 12" (DIAGONALS - WHITE)	◆ RAISED REFLECTIVE PAVEMENT MARKER (TWO-WAY AMBER)
⑦ MODIFIED URETHANE PAVEMENT MARKING - LINE 6" (2' DASH 2' SKIP - WHITE)	



USER NAME = whitlingme	DESIGNED -	REVISED -
	DRAWN -	REVISED -
PLOT SCALE = 40,0000 ' / in.	CHECKED -	REVISED -
PLOT DATE = 3/21/2018	DATE -	REVISED -

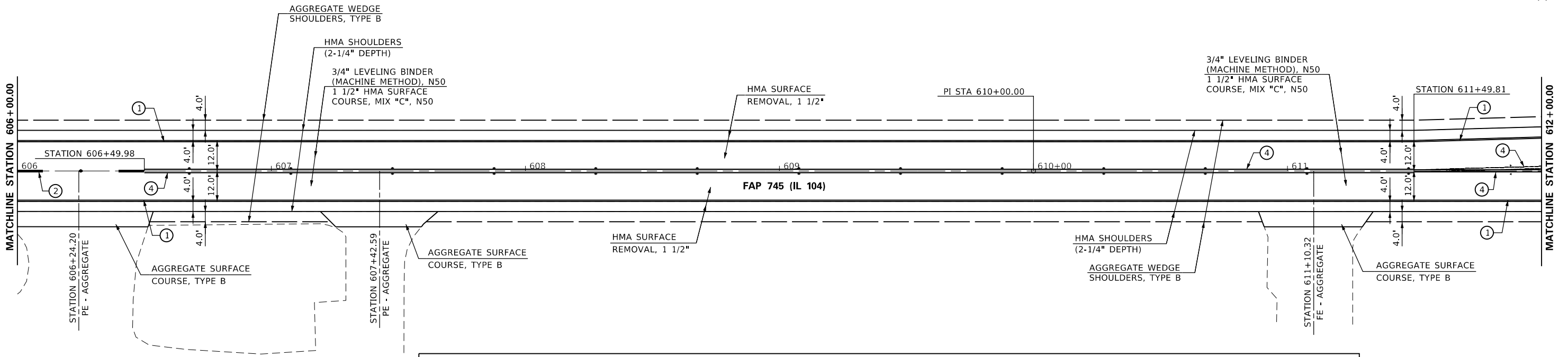
STATE OF ILLINOIS  
DEPARTMENT OF TRANSPORTATION

PLAN SHEET

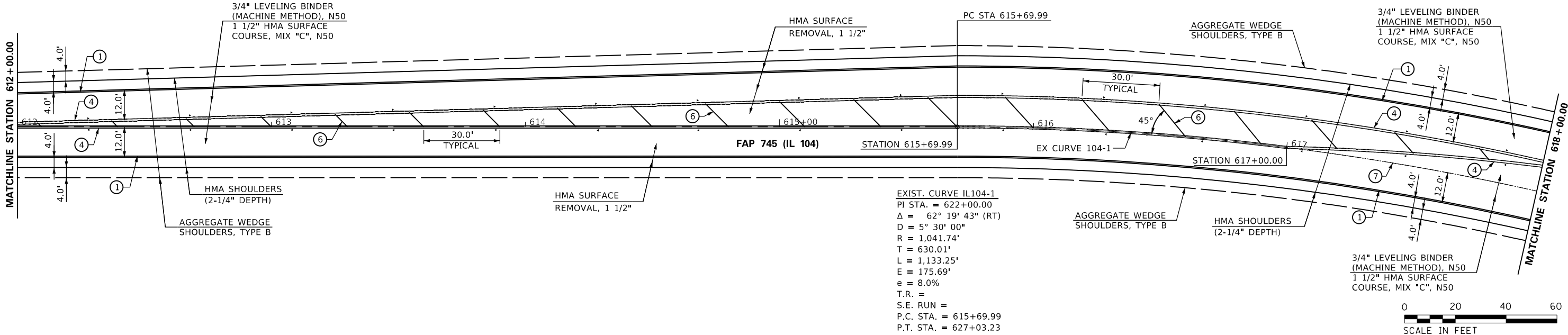
SCALE:	SHEET	OF	SHEETS	STA. 594+00.00	TO STA. 606+00.00
--------	-------	----	--------	----------------	-------------------

F.A.P. RTE.	SECTION	COUNTY	TOTAL SHEETS	SHEET NO.
745	(104) RS-6, (105) RS-8	ADAMS	23	18
CONTRACT NO. 72K59				
ILLINOIS FED. AID PROJECT STP-CWLQ(560)				

MODEL PLAN SHEET 07  
FILE NAME: p:\a1108\REID\NTEC\Illinois\gov\PI\DOT\Documents\DOT Office\Illidart\B\Projects\0672\K59\CaddData\CAD\sheet0672\K59-sh-07-plan.dgn



PAVEMENT MARKING LEGEND	
① MODIFIED URETHANE PAVEMENT MARKING - LINE 5" (EDGE LINE - WHITE)	⑧ MODIFIED URETHANE PAVEMENT MARKING - LINE 6" (SINGLE SOLID - WHITE)
② MODIFIED URETHANE PAVEMENT MARKING - LINE 5" (10' DASH 30' SKIP - YELLOW)	⑨ PREFORMED PLASTIC PAVEMENT MARKING, TYPE B - INLAID - LINE 24" (STOP BAR - WHITE)
③ MODIFIED URETHANE PAVEMENT MARKING - LINE 5" (SINGLE SOLID - YELLOW)	➔ PREFORMED PLASTIC PAVEMENT MARKING, TYPE B - INLAID - LETTERS AND SYMBOLS (ARROWS AT 15.6 SQ FT - WHITE)
④ MODIFIED URETHANE PAVEMENT MARKING - LINE 5" (DOUBLE @ 13" CENTERS - YELLOW)	➤ RAISED REFLECTIVE PAVEMENT MARKER (ONE-WAY CRYSTAL)
⑤ MODIFIED URETHANE PAVEMENT MARKING - LINE 8" (SINGLE SOLID - WHITE)	➤ RAISED REFLECTIVE PAVEMENT MARKER (ONE-WAY AMBER)
⑥ MODIFIED URETHANE PAVEMENT MARKING - LINE 12" (DIAGONALS - WHITE)	◆ RAISED REFLECTIVE PAVEMENT MARKER (TWO-WAY AMBER)
⑦ MODIFIED URETHANE PAVEMENT MARKING - LINE 6" (2' DASH 2' SKIP - WHITE)	



EXIST. CURVE IL104-1  
PI STA. = 622+00.00  
Δ = 62° 19' 43" (RT)  
D = 5° 30' 00"  
R = 1,041.74'  
T = 630.01'  
L = 1,133.25'  
E = 175.69'  
e = 8.0%  
T.R. =  
S.E. RUN =  
P.C. STA. = 615+69.99  
P.T. STA. = 627+03.23

USER NAME = whitlingme	DESIGNED -	REVISED -
	DRAWN -	REVISED -
PLOT SCALE = 40,0000 ' / in.	CHECKED -	REVISED -
PLOT DATE = 3/21/2018	DATE -	REVISED -

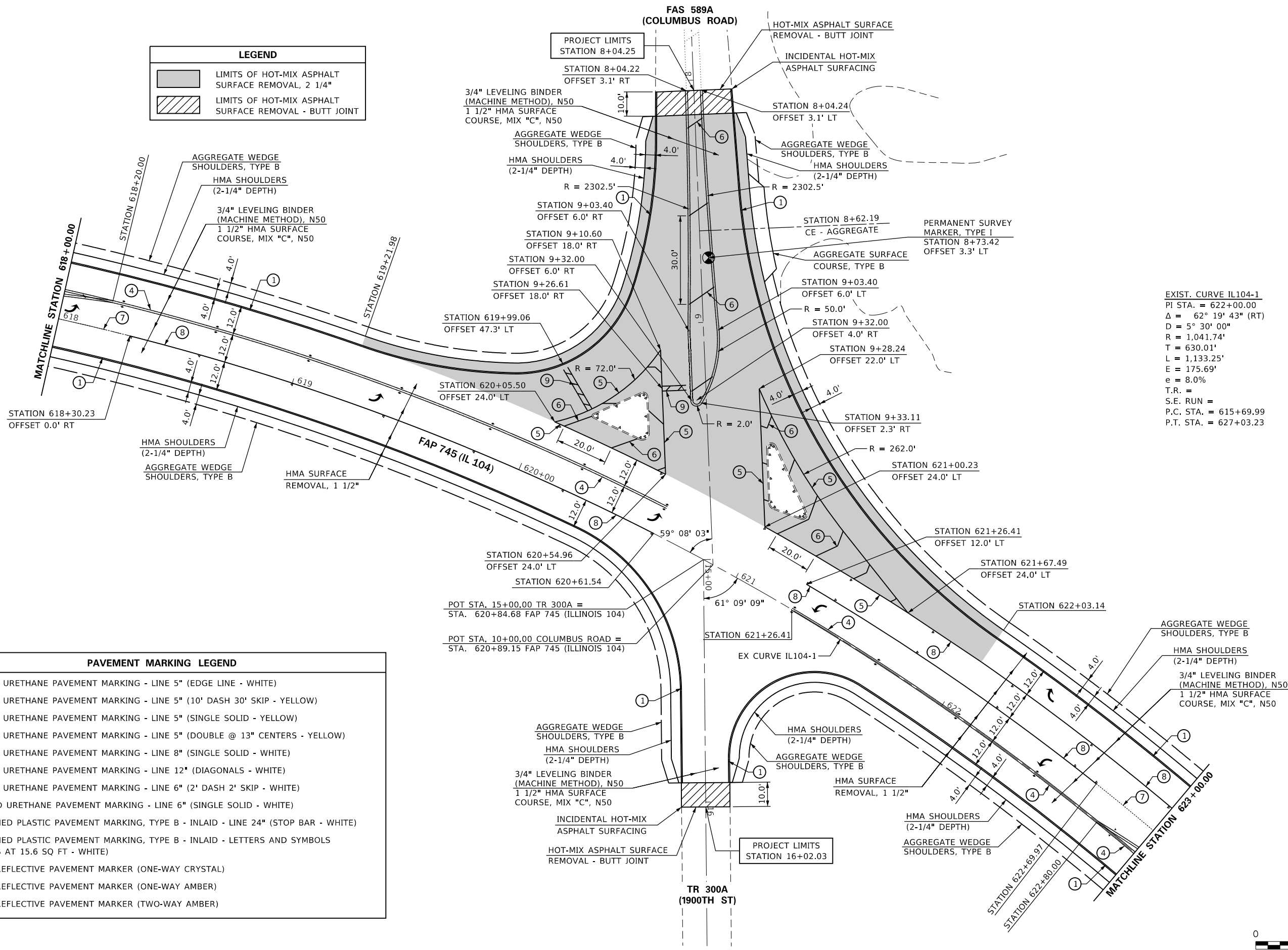
STATE OF ILLINOIS  
DEPARTMENT OF TRANSPORTATION

PLAN SHEET			
SCALE:	SHEET	OF	SHEETS

F.A.P. RTE.	SECTION	COUNTY	TOTAL SHEETS	SHEET NO.
745	(104) RS-6, (105) RS-8	ADAMS	23	19
CONTRACT NO. 72K59				
ILLINOIS FED. AID PROJECT STP-CWLQ(560)				

MODEL PLAN SHEET 08  
FILE NAME: p:\m08\ED\ID\ITEC\Illinois\gov\PI\DOT\Documents\DOT Office\Director\B\Projects\0672\K59\CaddData\CAD\sheet0672\K59-sh-07-plan.dgn

PAVEMENT MARKING LEGEND	
①	MODIFIED URETHANE PAVEMENT MARKING - LINE 5" (EDGE LINE - WHITE)
②	MODIFIED URETHANE PAVEMENT MARKING - LINE 5" (10' DASH 30' SKIP - YELLOW)
③	MODIFIED URETHANE PAVEMENT MARKING - LINE 5" (SINGLE SOLID - YELLOW)
④	MODIFIED URETHANE PAVEMENT MARKING - LINE 5" (DOUBLE @ 13" CENTERS - YELLOW)
⑤	MODIFIED URETHANE PAVEMENT MARKING - LINE 8" (SINGLE SOLID - WHITE)
⑥	MODIFIED URETHANE PAVEMENT MARKING - LINE 12" (DIAGONALS - WHITE)
⑦	MODIFIED URETHANE PAVEMENT MARKING - LINE 6" (2' DASH 2' SKIP - WHITE)
⑧	MODIFIED URETHANE PAVEMENT MARKING - LINE 6" (SINGLE SOLID - WHITE)
⑨	PREFORMED PLASTIC PAVEMENT MARKING, TYPE B - INLAID - LINE 24" (STOP BAR - WHITE)
↶	PREFORMED PLASTIC PAVEMENT MARKING, TYPE B - INLAID - LETTERS AND SYMBOLS (ARROWS AT 15.6 SQ FT - WHITE)
▷	RAISED REFLECTIVE PAVEMENT MARKER (ONE-WAY CRYSTAL)
▶	RAISED REFLECTIVE PAVEMENT MARKER (ONE-WAY AMBER)
◆	RAISED REFLECTIVE PAVEMENT MARKER (TWO-WAY AMBER)



LEGEND	
	LIMITS OF HOT-MIX ASPHALT SURFACE REMOVAL, 2 1/4"
	LIMITS OF HOT-MIX ASPHALT SURFACE REMOVAL - BUTT JOINT



USER NAME = whitlingme	DESIGNED -	REVISED -
DRAWN -	REVISED -	
PLOT SCALE = 40,0000 ' / in.	CHECKED -	REVISED -
PLOT DATE = 3/21/2018	DATE -	REVISED -

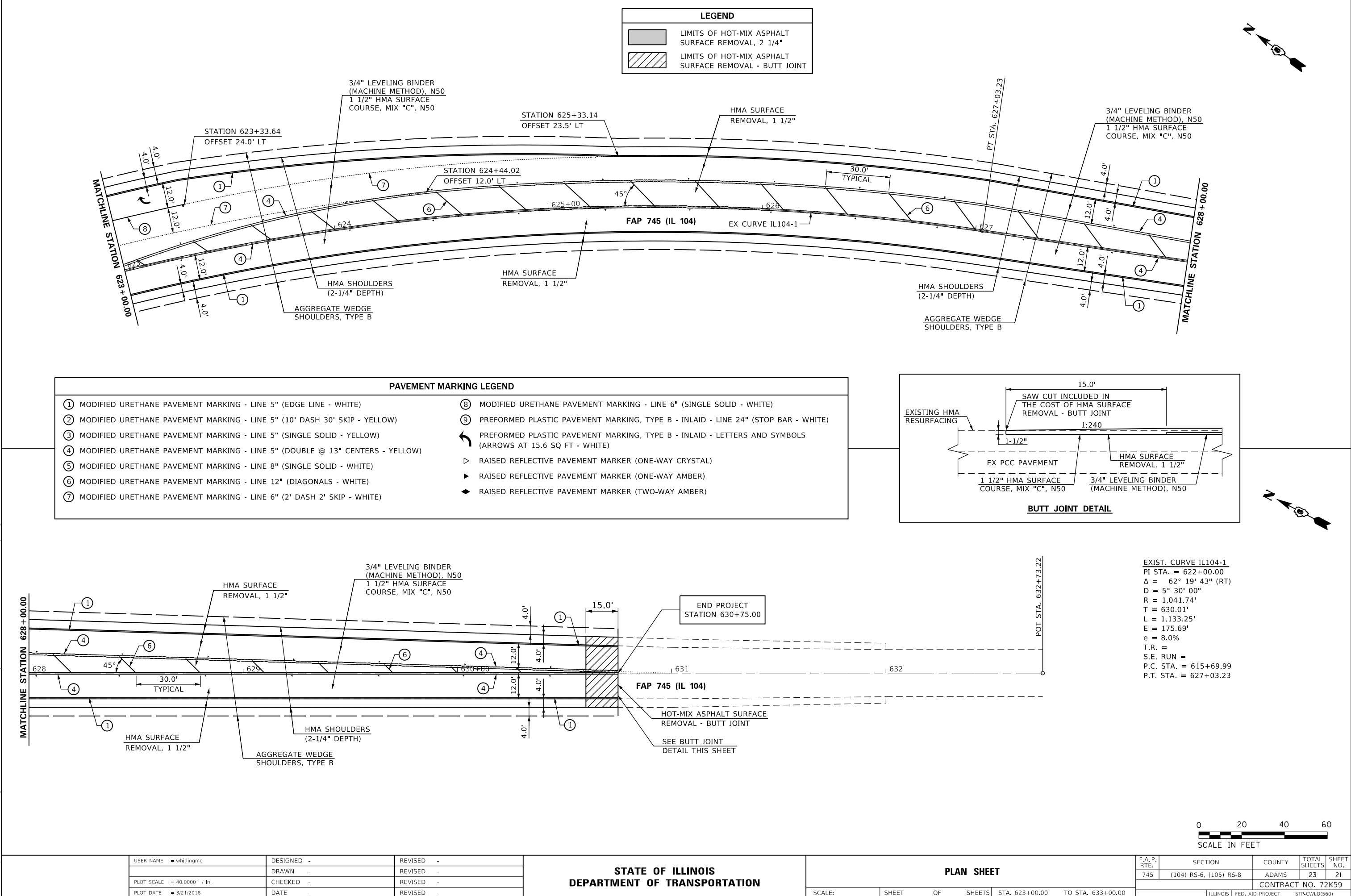
STATE OF ILLINOIS  
DEPARTMENT OF TRANSPORTATION

PLAN SHEET

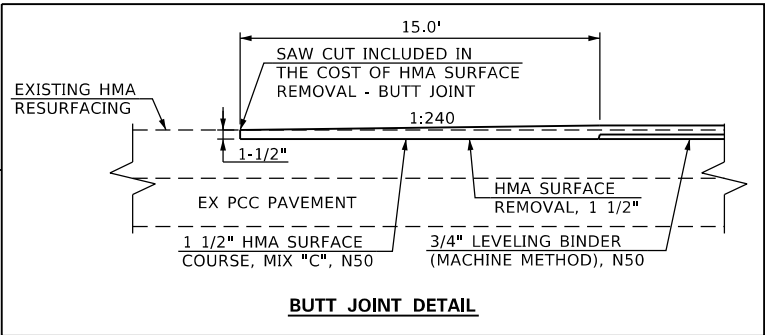
SCALE: SHEET OF SHEETS STA. 618+00.00 TO STA. 623+00.00

F.A.P. RTE.	SECTION	COUNTY	TOTAL SHEETS	SHEET NO.
745	(104) RS-6, (105) RS-8	ADAMS	23	20
CONTRACT NO. 72K59				
ILLINOIS FED. AID PROJECT STP-CWLQ(560)				

MODEL PLAN SHEET 09  
FILE NAME: p:\projects\0672\K59\Cadd\data\CD\sheet0672K59-sh-07plan.dgn



PAVEMENT MARKING LEGEND			
①	MODIFIED URETHANE PAVEMENT MARKING - LINE 5" (EDGE LINE - WHITE)	⑧	MODIFIED URETHANE PAVEMENT MARKING - LINE 6" (SINGLE SOLID - WHITE)
②	MODIFIED URETHANE PAVEMENT MARKING - LINE 5" (10' DASH 30' SKIP - YELLOW)	⑨	PREFORMED PLASTIC PAVEMENT MARKING, TYPE B - INLAID - LINE 24" (STOP BAR - WHITE)
③	MODIFIED URETHANE PAVEMENT MARKING - LINE 5" (SINGLE SOLID - YELLOW)	↩	PREFORMED PLASTIC PAVEMENT MARKING, TYPE B - INLAID - LETTERS AND SYMBOLS (ARROWS AT 15.6 SQ FT - WHITE)
④	MODIFIED URETHANE PAVEMENT MARKING - LINE 5" (DOUBLE @ 13" CENTERS - YELLOW)	▷	RAISED REFLECTIVE PAVEMENT MARKER (ONE-WAY CRYSTAL)
⑤	MODIFIED URETHANE PAVEMENT MARKING - LINE 8" (SINGLE SOLID - WHITE)	▶	RAISED REFLECTIVE PAVEMENT MARKER (ONE-WAY AMBER)
⑥	MODIFIED URETHANE PAVEMENT MARKING - LINE 12" (DIAGONALS - WHITE)	◆	RAISED REFLECTIVE PAVEMENT MARKER (TWO-WAY AMBER)
⑦	MODIFIED URETHANE PAVEMENT MARKING - LINE 6" (2' DASH 2' SKIP - WHITE)		



EXIST. CURVE IL104-1  
PI STA. = 622+00.00  
Δ = 62° 19' 43" (RT)  
D = 5° 30' 00"  
R = 1,041.74'  
T = 630.01'  
L = 1,133.25'  
E = 175.69'  
e = 8.0%  
T.R. =  
S.E. RUN =  
P.C. STA. = 615+69.99  
P.T. STA. = 627+03.23



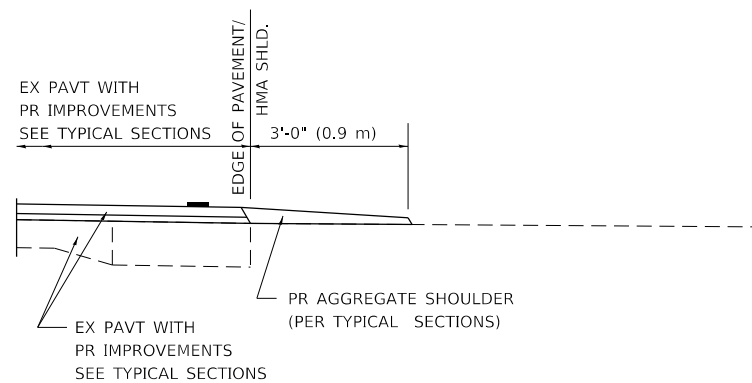
USER NAME = whitlingme	DESIGNED -	REVISED -
	DRAWN -	REVISED -
PLOT SCALE = 40,0000 ' / in.	CHECKED -	REVISED -
PLOT DATE = 3/21/2018	DATE -	REVISED -

STATE OF ILLINOIS  
DEPARTMENT OF TRANSPORTATION

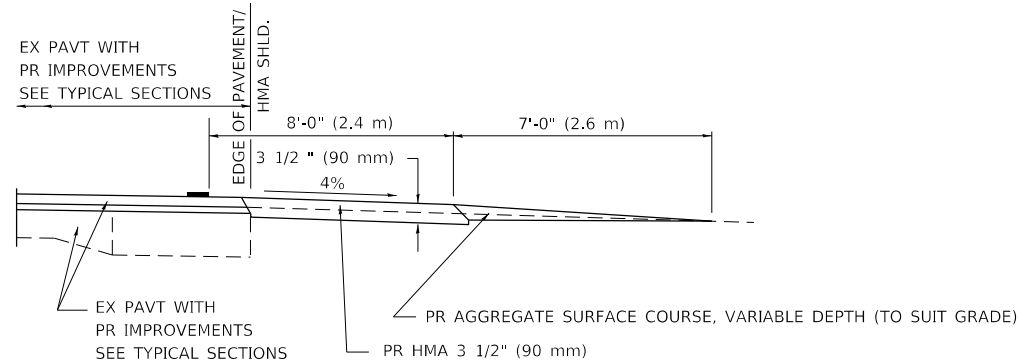
PLAN SHEET

SCALE: SHEET OF SHEETS STA. 623+00.00 TO STA. 633+00.00

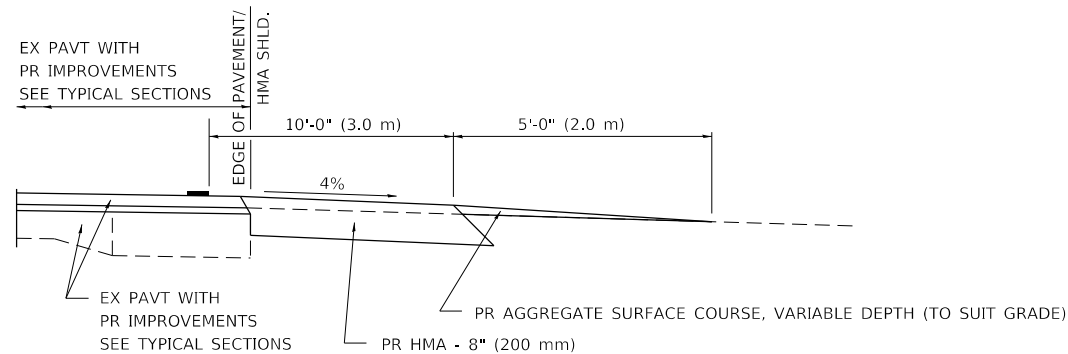
F.A.P. RTE.	SECTION	COUNTY	TOTAL SHEETS	SHEET NO.
745	(104) RS-6, (105) RS-8	ADAMS	23	21
CONTRACT NO. 72K59				
ILLINOIS FED. AID PROJECT STP-CWLQ(560)				



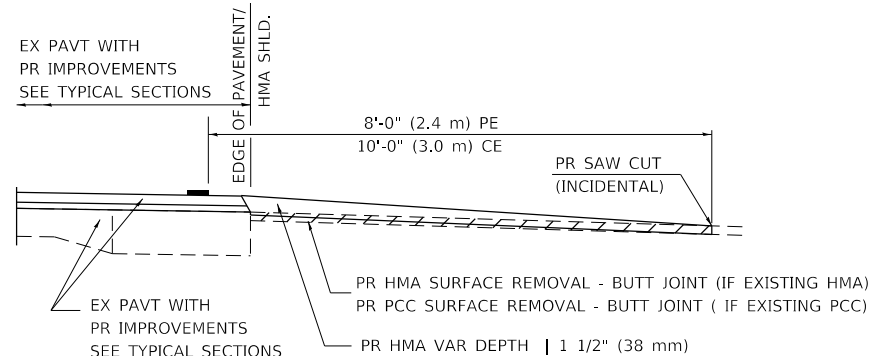
**SECTION A-A FOR EX EARTH/AGGREGATE FE**



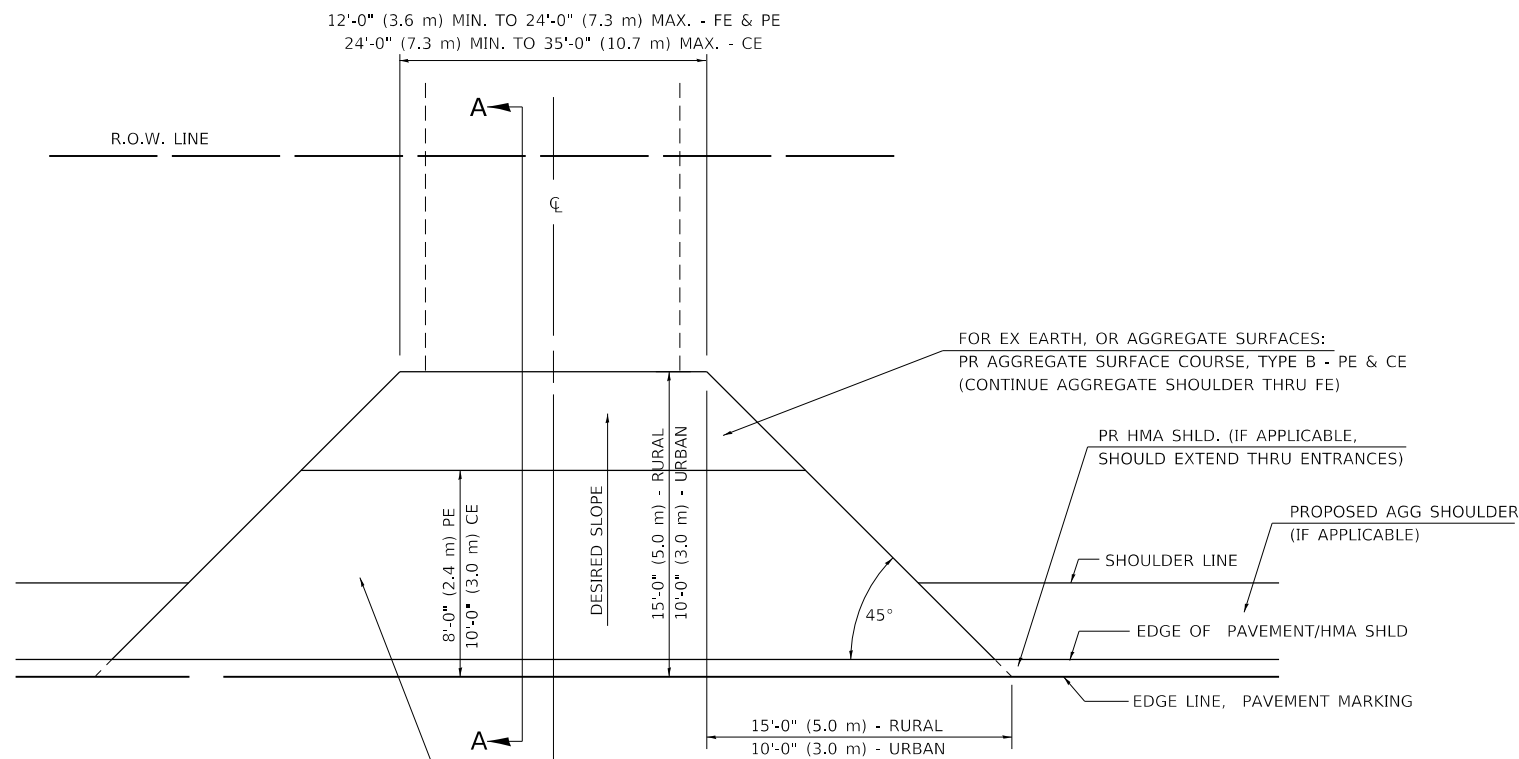
**SECTION A-A FOR EX EARTH/AGGREGATE PE**



**SECTION A-A FOR EX EARTH/AGGREGATE CE & SIDE ROAD**



**SECTION A-A FOR EX HMA/PC CONCRETE PE, CE & SIDE ROAD**



FOR EX EARTH OR AGGREGATE SURFACES:  
PR HMA SURFACE REMOVAL (IF APPLICABLE)  
PR AGGREGATE SHOULDER THRU - FE  
PR HMA CONCRETE 3 1/2 " (90 mm) - PE  
PR HMA CONCRETE 8" (200 mm) - CE

FOR EX HMA CONCRETE SURFACES:  
PR HMA SURFACE REMOVAL-BUTT JOINT

FOR EX PCC SURFACES:  
PR PCC SURFACE REMOVAL-BUTT JOINT

GENERAL NOTES:

THE RESIDENT ENGINEER WILL DETERMINE THE EXACT TYPE OF IMPROVEMENT TO BE COMPLETED FOR ALL ENTRANCES, SIDEROADS AND MAILBOX TURNOUTS ON THIS PROJECT.

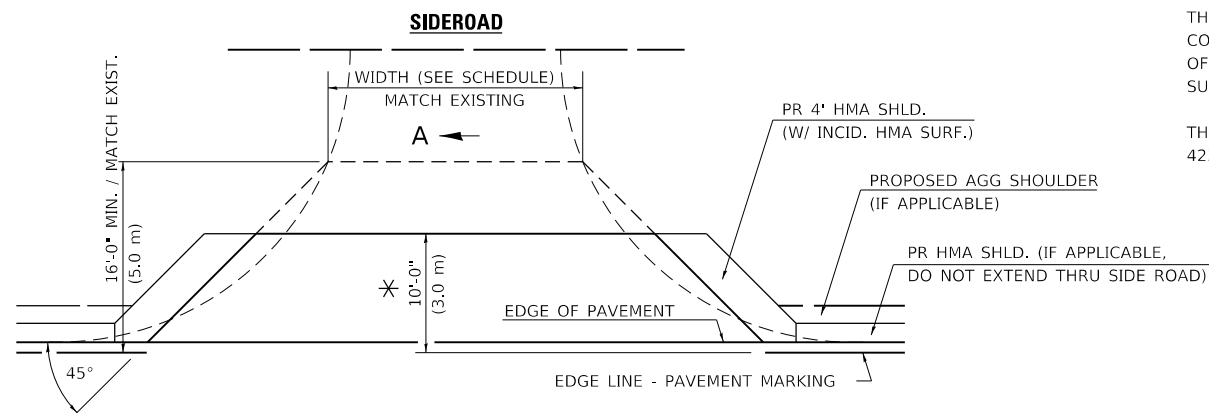
THE PLAN DETAILS AND SCHEDULES SHOULD BE USED AS A GUIDE FOR THE ENGINEER TO IMPLEMENT THE FINAL DESIGN. THE ENGINEER MAY DECIDE TO SALVAGE PORTIONS OF THE EXISTING ENTRANCE PAVEMENT STRUCTURE; THEREFORE, REDUCING PAY ITEM QUANTITIES. NO ADDITIONAL PAYMENT WILL BE ALLOWED FOR THIS REDUCTION IN QUANTITIES.

ANY WORK THE ENGINEER REQUIRES WHICH IS NOT COVERED BY A PAY ITEM  
CONTAINED IN THE PLANS WILL BE PAID FOR IN ACCORDANCE WITH ARTICLE  
109.04 OF THE STANDARD SPECIFICATIONS.

HMA CONCRETE REQUIRED TO CONSTRUCT THE ENTRANCES SHALL BE IN ACCORDANCE WITH THE APPLICABLE PORTIONS OF SECTION 406 AND 408 OF THE STANDARD SPECIFICATIONS AND AS DIRECTED BY THE ENGINEER.

WHEN THE HMA CONCRETE PROPOSED FOR THE IMPROVEMENT IS THICKER THAN 3 INCHES (75 mm) AND REQUIRE PLACEMENT IN MORE THAN ONE LIFT, THE BOTTOM LIFT(S) SHALL MEET THE REQUIREMENTS OF HMA BASE COURSE IN SECTION 406 OF THE STANDARD SPECIFICATIONS AND THE TOP LIFT OF 2 INCHES (50 mm) SHALL MEET THE REQUIREMENTS OF HMA CONCRETE SURFACE COURSE, SUPERPAVE.

THIS WORK WILL BE PAID FOR IN ACCORDANCE WITH SECTIONS 351, 358, 408, 423 AND 440 OF THE STANDARD SPECIFICATIONS.



\* THE PROPOSED HMA SIDEROAD SHOULD EXTEND TO THE EXISTING BUTT JOINT WITH A MINIMUM OF 10.0 FEET IF NO BUTT JOINT EXISTS

USER NAME = whitlingme	DESIGNED -	REVISED -
	DRAWN -	REVISED -
PLOT SCALE = 40,0000 ' / in.	CHECKED -	REVISED -
PLOT DATE = 3/21/2018	DATE	REVISED -

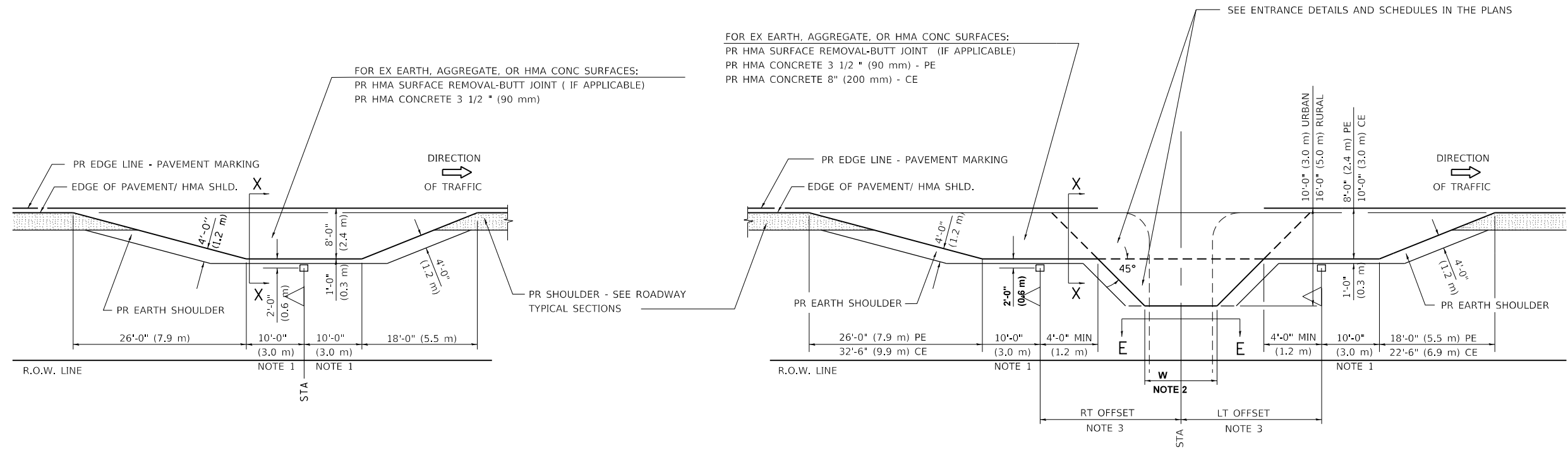
**STATE OF ILLINOIS**  
**DEPARTMENT OF TRANSPORTATION**

**DISTRICT 6 DETAILS FOR RURAL/URBAN ENTRANCE, MAILBOX  
TURNOUT & SIDEROADS W/O CONCRETE GUTTER (3P-PROJECT)**

SCALE:	SHEET 1 OF 2 SHEETS	STA. TO STA.
--------	---------------------	--------------

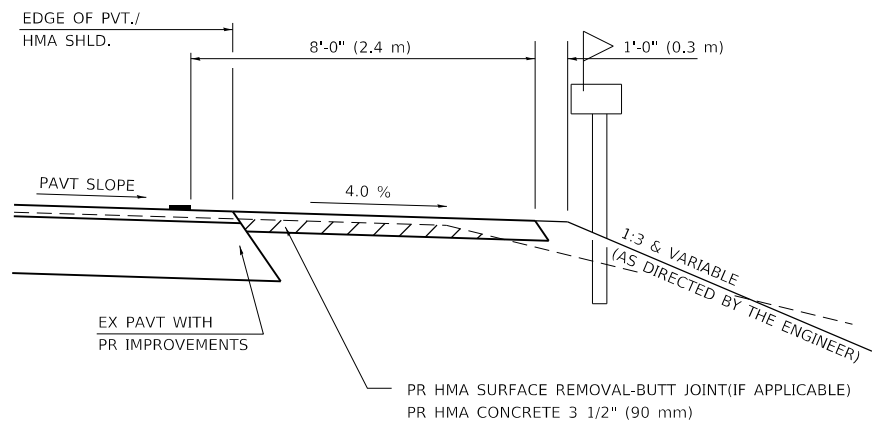
F.A.P. RTE.	SECTION	COUNTY	TOTAL SHEETS	SHEET NO.
745	(104) RS-6, (105) RS-8	ADAMS	23	22
		CONTRACT NO. 72K59		
	ILLINOIS	FED. AID PROJECT	STP-CWLQ(560)	

DETAILS OF MAILBOX TURNOUTS



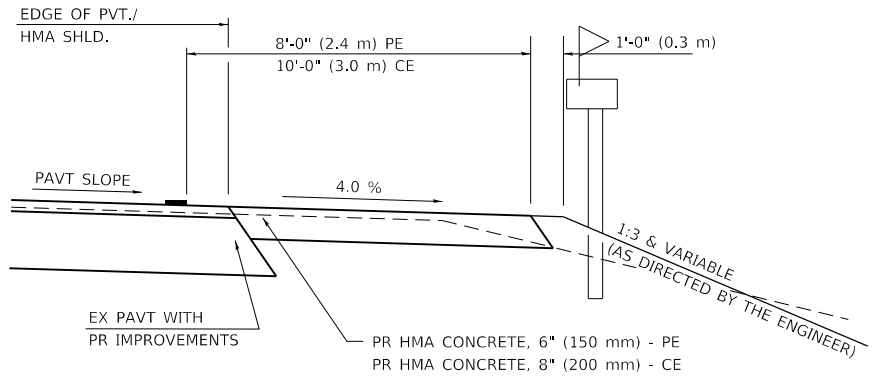
PLAN - MAILBOX TURNOUTS

PLAN - COMBINED MAILBOX TURNOUT WITH TRAILING OR LEADING ENTRANCE



SECTION X-X THRU MAILBOX TURNOUT  
ALSO APPLIES TO MAILBOX TURNOUTS COMBINED WITH  
EX EARTH, AGGREGATE, OR HMA PE & FE

( DETAIL APPLIES WHEN M.B. TURNOUT DOES NOT EXIST.  
IF EXISTING, TREAT SAME AS ENTRANCE. )



SECTION X-X THRU MAILBOX TURNOUT  
COMBINED WITH EX HMA CONC & PC CONC PE & CE

( DETAIL APPLIES WHEN M.B. TURNOUT DOES NOT EXIST.  
IF EXISTING, TREAT SAME AS ENTRANCE. )

- NOTE 1 IF MORE THAN ONE MAILBOX IS PRESENT, DIMENSION FROM CENTER OF END MAILBOX.
- NOTE 2 FOR ENTRANCE LAYOUT DIMENSIONS AND SECTIONS A-A & E-E REFER TO THE SCHEDULES IN THE PLANS.
- NOTE 3 BOTH LT OR RT OFFSETS FOR MAILBOX SHOWN USE OFFSET DIMENSION PER SCHEDULE AND REFER TO LAYOUT SHOWN ON THE PLAN.

ALL DIMENSIONS ARE IN INCHES ( MILLIMETERS )  
UNLESS OTHERWISE SHOWN.

MODEL D6 Standards  
FILE Name: p:\work\01EID\NTEC\Illinois.gov\PHUDOT\Documents\DOT\_Offices\District 6\Projects\0672K59\CADD\data\CD\sheet\0672K59-sh-06-detail.dgn

	USER NAME   = whitlingme	DESIGNED   -	REVISED   -	STATE OF ILLINOIS DEPARTMENT OF TRANSPORTATION	DISTRICT 6 DETAILS FOR RURAL/URBAN ENTRANCE, MAILBOX TURNOUT & SIDEROADS W/O CONCRETE GUTTER (3P-PROJECT)	F.A.P. RTE.		SECTION	COUNTY	TOTAL SHEETS	SHEET NO.
	PLOT SCALE   = 40,0000 ' / in.	DRAWN   -	REVISED   -			745	(104) RS-6, (105) RS-8	ADAMS	23	23	
	PLOT DATE   = 3/21/2018	CHECKED   -	REVISED   -			CONTRACT NO. 72K59					
		DATE   -	REVISED   -			ILLINOIS FED. AID PROJECT STP-CWLQ(560)					
SCALE:						SHEET   2	OF   2	SHEETS	STA.	TO STA.	