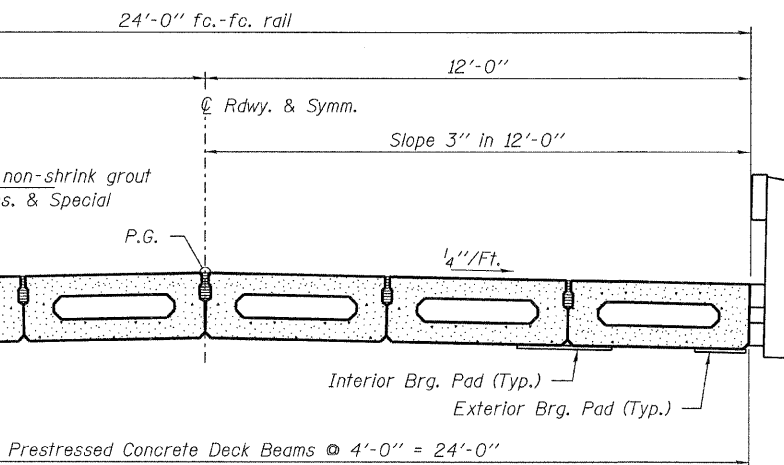
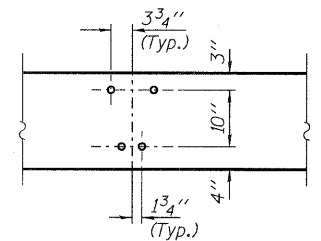


ELEVATION
 Showing Rail Post Spaces
 See sheet 8 of 12 for Railing Details.

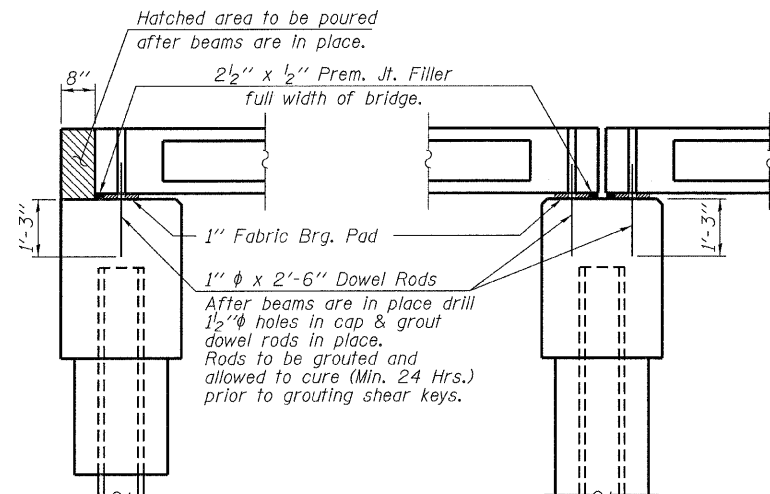
Curled End Sections (Typ.)
 See sheet 8 of 12 for details.
 (NW & SE Corners Only)



CROSS SECTION
 See sheets 2 thru 6 of 12 for Superstructure.



DETAIL A



SECTION AT ABUTMENTS
 © Rt. L's

SECTION AT PIERS
 © Rt. L's

FILE NAME = 118266-shr-bridge.dgn	USER NAME =	DESIGNED - A.S.L.	REVISED -	STATE OF ILLINOIS JEFFERSON COUNTY HIGHWAY DEPARTMENT	SUPERSTRUCTURE DETAILS STRUCTURE NO. 041-3748	T.R.	SECTION	COUNTY	TOTAL SHEETS	SHEET NO.	
HAMPTON, LENZINI AND RENWICK, INC. 208 STEVENSON DRIVE, SUITE 201 SPRINGFIELD, ILLINOIS 62703	PLOT SCALE =	CHECKED - S.W.M.	REVISED -			91	09-06122-00-BR	JEFFERSON	37	32	
HLR ILLINOIS PROFESSIONAL DESIGN FIRM L3 / PE / SE CORP. 184.000989	PLOT DATE = 2/20/2012	DRAWN - D.A.B.	REVISED -			FARRINGTON ROAD DISTRICT CONTRACT NO. 99471					
		CHECKED - S.W.M.	REVISED -			SHEET NO. 7 OF 12 SHEETS					
						[ILLINOIS] FED. AID PROJECT BR05-00810631					