

UNDRGRD C MD
1555 FT.

I-74

74

© 2011 Google

Google earth

SCHEDULE OF QUANTITIES
ITS FIBER (WOODHULL TO Moline) - SHEET 48

UNDERGROUND CONDUIT, MULTI-DUCT, 7-16MM MICRODUCTS	FOOT	1555.0
FIBER OPTIC CABLE 96 FIBERS, SINGLE MODE	FOOT	1555.0

Imagery Date: 9/12/2011 1994

41°22'30.06" N 90°19'42.68" W elev 765 ft

Eye alt 2791 ft

FILE NAME =	USER NAME = keithbr	DESIGNED -	REVISED -
et\notes\68b04 fiber plans\68b04\68B04	- Woodhull to Moline (1-95) - Final 4-30-12.dgn	DRAWN -	REVISED -
	PLOT SCALE = 164.7568' / in.	CHECKED -	REVISED -
	PLOT DATE = 5/1/2012	DATE -	REVISED -

STATE OF ILLINOIS
DEPARTMENT OF TRANSPORTATION

FIBER OPTIC CONDUIT AND CABLE PROJECT
I-74 (FROM WOODHULL TO Moline) CONTINUED

SCALE: SHEET NO. 48 OF 62 SHEETS STA. TO STA.

F.A.P. RTE.	SECTION	COUNTY	TOTAL SHEETS	SHEET NO.
VAR	D4 FIBER OPTIC 2013	HENRY/ROCK ISL	96	51
CONTRACT NO. 68B04				
ILLINOIS FED. AID PROJECT				



COMMUNICATIONS VAULT
1.0 EACH

UNDRGRD C MD
847 FT.

I-74

UNDRGRD C MD
722 FT.

SCHEDULE OF QUANTITIES		
ITS FIBER (WOODHULL TO MOLINE) - SHEET 49		
UNDERGROUND CONDUIT, MULTI-DUCT, 7-16MM MICRODUCTS	FOOT	1569.0
FIBER OPTIC CABLE 96 FIBERS, SINGLE MODE	FOOT	1619.0
COMMUNICATIONS VAULT	EACH	1.0

Imagery Date: 9/12/2011 1994

©2011 Google

Google earth

41°22'43.88" N 90°19'42.20" W elev 763 ft

Eye alt 2791 ft

FILE NAME =	USER NAME = keithbr	DESIGNED -	REVISED -
ct:\notes\68b04 fiber plans\68b04\68B04	- Woodhull to Moline (1-95) - Final 4-30-12.dgn	DRAWN -	REVISED -
	PLOT SCALE = 164.7568' / 1 in.	CHECKED -	REVISED -
	PLOT DATE = 5/1/2012	DATE -	REVISED -

STATE OF ILLINOIS
DEPARTMENT OF TRANSPORTATION

FIBER OPTIC CONDUIT AND CABLE PROJECT
I-74 (FROM WOODHULL TO MOLINE) CONTINUED

SCALE: SHEET NO. 49 OF 62 SHEETS STA. TO STA.

F.A.P. RTE.	SECTION	COUNTY	TOTAL SHEETS	SHEET NO.
VAR	D4 FIBER OPTIC 2013	HENRY/ROCK ISL	96	52
CONTRACT NO. 68B04				
ILLINOIS FED. AID PROJECT				



UNDRGRD C MD
1572 FT.



I-74

© 2011 Google

Google earth

SCHEDULE OF QUANTITIES		
ITS FIBER (WOODHULL TO MOLINE) - SHEET 50		
UNDERGROUND CONDUIT, MULTI-DUCT, 7-16MM MICRODUCTS	FOOT	1572.0
FIBER OPTIC CABLE 96 FIBERS, SINGLE MODE	FOOT	1572.0

Imagery Date: 9/12/2011 1994

41°22'59.03" N 90°19'42.12" W elev 760 ft

Eye alt 2791 ft

FILE NAME =	USER NAME = keithbr	DESIGNED -	REVISED -
ct\notes\68b04 fiber plans\68b04\68B04	Woodhull to Moline (1-95) - Final 4-30-12.dgn	DRAWN -	REVISED -
	PLOT SCALE = 164.7568' / 1" in.	CHECKED -	REVISED -
	PLOT DATE = 5/1/2012	DATE -	REVISED -

STATE OF ILLINOIS
DEPARTMENT OF TRANSPORTATION

FIBER OPTIC CONDUIT AND CABLE PROJECT
I-74 (FROM WOODHULL TO MOLINE) CONTINUED

SCALE: SHEET NO. 50 OF 62 SHEETS STA. TO STA.

F.A.P. RTE.	SECTION	COUNTY	TOTAL SHEETS	SHEET NO.
VAR	D4 FIBER OPTIC 2013	HENRY/ROCK ISL	96	53
CONTRACT NO. 68B04				
ILLINOIS FED. AID PROJECT				



UNDRGRD C MD
1581 FT.

I-74

© 2011 Google

Google earth

SCHEDULE OF QUANTITIES		
ITS FIBER (WOODHULL TO MOLINE) - SHEET 51		
UNDERGROUND CONDUIT, MULTI-DUCT, 7-16MM MICRODUCTS	FOOT	1581.0
FIBER OPTIC CABLE 96 FIBERS, SINGLE MODE	FOOT	1581.0

Imagery Date: 9/12/2011 1994

41°23'14.64" N 90°19'42.07" W elev 752 ft

Eye alt 2791 ft

FILE NAME = c:\notes\68b04 fiber plans\68b04\68B04	USER NAME = keithbr	DESIGNED -	REVISED -	STATE OF ILLINOIS DEPARTMENT OF TRANSPORTATION	FIBER OPTIC CONDUIT AND CABLE PROJECT I-74 (FROM WOODHULL TO MOLINE) CONTINUED			F.A.P. RTE.	SECTION	COUNTY	TOTAL SHEETS	SHEET NO.
	Woodhull to Moline (1-95) - Final 4-30-12.dgn	DRAWN -	REVISED -					VAR	D4 FIBER OPTIC 2013	HENRY/ROCK ISL	96	54
	PLOT SCALE = 164.7568 ' / in.	CHECKED -	REVISED -					CONTRACT NO. 68B04				
	PLOT DATE = 5/1/2012	DATE -	REVISED -					ILLINOIS FED. AID PROJECT				
					SCALE:	SHEET NO. 51 OF 62 SHEETS	STA.	TO STA.				



UNDRGRD C MD
1577 FT

I-74

COMMUNICATIONS VAULT
1.0 EACH

Google earth

SCHEDULE OF QUANTITIES		
ITS FIBER (WOODHULL TO Moline) - SHEET 52		
UNDERGROUND CONDUIT, MULTI-DUCT, 7-16MM MICRODUCTS	FOOT	1577.0
FIBER OPTIC CABLE 96 FIBERS, SINGLE MODE	FOOT	1627.0
COMMUNICATIONS VAULT	EACH	1.0

Imagery Date: 9/12/2011 1994

41°23'30.91"N 90°19'41.93" W elev 743 ft

Eye alt 2791 ft

FILE NAME = c:\notes\68b04 fiber plans\68b04\68B04	USER NAME = keithbr	DESIGNED -	REVISED -	STATE OF ILLINOIS DEPARTMENT OF TRANSPORTATION	FIBER OPTIC CONDUIT AND CABLE PROJECT I-74 (FROM WOODHULL TO Moline) CONTINUED	F.A.P. RTE.	SECTION	COUNTY	TOTAL SHEETS	SHEET NO.
	Woodhull to Moline (1-95) - Final 4-30-12.dgn	DRAWN -	REVISED -			VAR	D4 FIBER OPTIC 2013	HENRY/ROCK ISL	96	55
	PLOT SCALE = 164,7568' / in.	CHECKED -	REVISED -			CONTRACT NO. 68B04				
	PLOT DATE = 5/1/2012	DATE -	REVISED -		SCALE:	SHEET NO. 52 OF 62 SHEETS	STA.	TO STA.	ILLINOIS FED. AID PROJECT	



UNDRGRD C MD
1089 FT.

I-74

UNDRGRD C MD
171 FT. (PUSHED)
UNDER STRUCTURE

N. 1700TH AVE.

N. 1700TH AVE.

N 1700th Ave

UNDRGRD C MD
290 FT.

© 2011 Google

Google earth

Eye alt 2791 ft

SCHEDULE OF QUANTITIES
ITS FIBER (WOODHULL TO MOLINE) - SHEET 53

UNDERGROUND CONDUIT, MULTI-DUCT, 7-16MM MICRODUCTS	FOOT	1550.0
FIBER OPTIC CABLE 96 FIBERS, SINGLE MODE	FOOT	1550.0

Imagery Date: 9/12/2011 1994

41°23'45.06" N 90°19'41.79" W elev 745 ft

FILE NAME =	USER NAME = keithbr	DESIGNED -	REVISED -
c:\notes\68b04 fiber plans\68b04\68B04	- Woodhull to Moline (1-95) - Final 4-30-12.dgn	DRAWN -	REVISED -
	PLOT SCALE = 164.7568' / 1" in.	CHECKED -	REVISED -
	PLOT DATE = 5/1/2012	DATE -	REVISED -

STATE OF ILLINOIS
DEPARTMENT OF TRANSPORTATION

FIBER OPTIC CONDUIT AND CABLE PROJECT
I-74 (FROM WOODHULL TO MOLINE) CONTINUED

SCALE: SHEET NO. 53 OF 62 SHEETS STA. TO STA.

F.A.P. RTE.	SECTION	COUNTY	TOTAL SHEETS	SHEET NO.
VAR	D4 FIBER OPTIC 2013	HENRY/ROCK ISL	96	56
CONTRACT NO. 68B04				
ILLINOIS FED. AID PROJECT				



COMMUNICATIONS VAULT
1.0 EACH

UNDRGRD C MD
686 FT.

UNDRGRD C MD
873 FT.

I-74
74

SCHEDULE OF QUANTITIES		
ITS FIBER (WOODHULL TO MOLINE) - SHEET 54		
UNDERGROUND CONDUIT, MULTI-DUCT, 7-16MM MICRODUCTS	FOOT	1559.0
FIBER OPTIC CABLE 96 FIBERS, SINGLE MODE	FOOT	1609.0
COMMUNICATIONS VAULT	EACH	1.0

Imagery Date: 9/12/2011 1994

41°24'00.13" N 90°19'41.82" W elev 740 ft

Eye alt 2791 ft

FILE NAME =	USER NAME = keithbr	DESIGNED -	REVISED -
c:\notes\68b04 fiber plans\68b04\68B04	- Woodhull to Moline (1-95) - Final 4-30-12.dgn	DRAWN -	REVISED -
	PLOT SCALE = 164,7568' / in.	CHECKED -	REVISED -
	PLOT DATE = 5/1/2012	DATE -	REVISED -

STATE OF ILLINOIS
DEPARTMENT OF TRANSPORTATION

FIBER OPTIC CONDUIT AND CABLE PROJECT
I-74 (FROM WOODHULL TO MOLINE) CONTINUED

SCALE: SHEET NO. 54 OF 62 SHEETS STA. TO STA.

F.A.P. RTE.	SECTION	COUNTY	TOTAL SHEETS	SHEET NO.
VAR	D4 FIBER OPTIC 2013	HENRY/ROCK ISL	96	57
CONTRACT NO. 68B04				
ILLINOIS FED. AID PROJECT				



UNDRGRD C MD
1541 FT

74

I-74

© 2011 Google

Google earth

SCHEDULE OF QUANTITIES		
ITS FIBER (WOODHULL TO MOLINE) - SHEET 55		
UNDERGROUND CONDUIT, MULTI-DUCT, 7-16MM MICRODUCTS	FOOT	1541.0
FIBER OPTIC CABLE 96 FIBERS, SINGLE MODE	FOOT	1541.0

Imagery Date: 9/12/2011 1994

41°24'20.43" N 90°19'41.69" W elev 734 ft

Eye alt 2791 ft

FILE NAME = c:\notes\68b04 fiber plans\68b04\68B04	USER NAME = keithbr	DESIGNED -	REVISED -	STATE OF ILLINOIS DEPARTMENT OF TRANSPORTATION	FIBER OPTIC CONDUIT AND CABLE PROJECT I-74 (FROM WOODHULL TO MOLINE) CONTINUED	F.A.P. RTE.	SECTION	COUNTY	TOTAL SHEETS	SHEET NO.
	Woodhull to Moline (1-95) - Final 4-30-12.dgn	DRAWN -	REVISED -			VAR	D4 FIBER OPTIC 2013	HENRY/ROCK ISL	96	58
	PLOT SCALE = 164,7568' / in.	CHECKED -	REVISED -			CONTRACT NO. 68B04				
	PLOT DATE = 5/1/2012	DATE -	REVISED -			ILLINOIS FED. AID PROJECT				
	SCALE:		SHEET NO. 55 OF 62 SHEETS			STA.		TO STA.		



I-74

UNDRGRD C MD
1544 FT.

SCHEDULE OF QUANTITIES		
ITS FIBER (WOODHULL TO MOLINE) - SHEET 56		
UNDERGROUND CONDUIT, MULTI-DUCT, 7-16MM MICRODUCTS	FOOT	1544.0
FIBER OPTIC CABLE 96 FIBERS, SINGLE MODE	FOOT	1544.0

Imagery Date: 9/12/2011 1994

© 2011 Google

Google earth

41°24'30.48" N 90°19'41.78" W elev 730 ft

Eye alt 2791 ft

FILE NAME =	USER NAME = keithbr	DESIGNED -	REVISED -
ct:\notes\68b04 fiber plans\68b04\68B04	- Woodhull to Moline (1-95) - Final 4-30-12.dgn	DRAWN -	REVISED -
	PLOT SCALE = 164.7568 ' / in.	CHECKED -	REVISED -
	PLOT DATE = 5/1/2012	DATE -	REVISED -

STATE OF ILLINOIS
DEPARTMENT OF TRANSPORTATION

FIBER OPTIC CONDUIT AND CABLE PROJECT
I-74 (FROM WOODHULL TO MOLINE) CONTINUED

SCALE: SHEET NO. 56 OF 62 SHEETS STA. TO STA.

F.A.P. RTE.	SECTION	COUNTY	TOTAL SHEETS	SHEET NO.
VAR	D4 FIBER OPTIC 2013	HENRY/ROCK ISL	96	59
CONTRACT NO. 68B04				
ILLINOIS FED. AID PROJECT				



UNDRGRD C MD
1311 FT.

I-74

COMMUNICATIONS VAULT
1.0 EACH

UNDRGRD C MD
229 FT.

SCHEDULE OF QUANTITIES		
ITS FIBER (WOODHULL TO MOLINE) - SHEET 57		
UNDERGROUND CONDUIT, MULTI-DUCT, 7-16MM MICRODUCTS	FOOT	1540.0
FIBER OPTIC CABLE 96 FIBERS, SINGLE MODE	FOOT	1590.0
COMMUNICATIONS VAULT	EACH	1.0

Imagery Date: 9/12/2011 1994

41°24'45.83" N 90°19'41.79" W elev 723 ft

Eye alt 2791 ft

Google earth

FILE NAME = c:\notes\68b04 fiber plans\68b04\68B04	USER NAME = keithbr	DESIGNED -	REVISED -	STATE OF ILLINOIS DEPARTMENT OF TRANSPORTATION	FIBER OPTIC CONDUIT AND CABLE PROJECT I-74 (FROM WOODHULL TO MOLINE) CONTINUED	F.A.P. RTE.		SECTION	COUNTY	TOTAL SHEETS	SHEET NO.		
	Woodhull to Moline (1-95) - Final 4-30-12.dgn	DRAWN -	REVISED -			VAR	D4 FIBER OPTIC 2013	HENRY/ROCK ISL	96	60			
	PLOT SCALE = 164.7568 ' / in.	CHECKED -	REVISED -			CONTRACT NO. 68B04							
	PLOT DATE = 5/1/2012	DATE -	REVISED -			SCALE:		SHEET NO. 57 OF 62 SHEETS		STA. TO STA.		ILLINOIS FED. AID PROJECT	



UNDRGRD C MD
1551 FT.

I-74



© 2011 Google

Google earth

Eye alt 2791 ft

SCHEDULE OF QUANTITIES		
ITS FIBER (WOODHULL TO MOLINE) - SHEET 58		
UNDERGROUND CONDUIT, MULTI-DUCT, 7-16MM MICRODUCTS	FOOT	1551.0
FIBER OPTIC CABLE 96 FIBERS, SINGLE MODE	FOOT	1551.0

Imagery Date: 9/12/2011 1994

41°25'01.30" N 90°19'42.43" W elev 730 ft

FILE NAME = c:\notes\68b04 fiber plans\68b04\68B04	USER NAME = keithbr	DESIGNED -	REVISED -
	Woodhull to Moline (1-95) - Final 4-30-12.dgn	DRAWN -	REVISED -
	PLOT SCALE = 164.7568' / 1" in.	CHECKED -	REVISED -
	PLOT DATE = 5/1/2012	DATE -	REVISED -

STATE OF ILLINOIS
DEPARTMENT OF TRANSPORTATION

FIBER OPTIC CONDUIT AND CABLE PROJECT
I-74 (FROM WOODHULL TO MOLINE) CONTINUED

SCALE: SHEET NO. 58 OF 62 SHEETS STA. TO STA.

F.A.P. RTE.	SECTION	COUNTY	TOTAL SHEETS	SHEET NO.
VAR	D4 FIBER OPTIC 2013	HENRY/ROCK ISL	96	61
CONTRACT NO. 68B04				
ILLINOIS FED. AID PROJECT				



UNDRGRD C MD
363 FT.

COMMUNICATIONS VAULT
1.0 EACH

74

I-74

UNDRGRD C MD
1138 FT.

© 2011 Google

Google earth

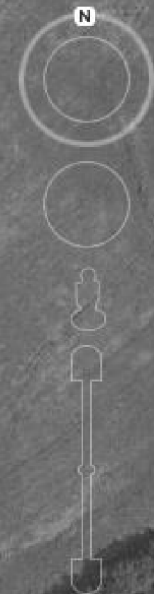
41°25'16.56" N 90°19'42.27" W elev 721 ft

Eye alt 2791 ft

SCHEDULE OF QUANTITIES		
ITS FIBER (WOODHULL TO Moline) - SHEET 59		
UNDERGROUND CONDUIT, MULTI-DUCT, 7-16MM MICRODUCTS	FOOT	1501.0
FIBER OPTIC CABLE 96 FIBERS, SINGLE MODE	FOOT	1551.0
COMMUNICATIONS VAULT	EACH	1.0

Imagery Date: 9/12/2011 1994

FILE NAME : c:\notes\68b04 fiber plans\68b04\68B04	USER NAME : keithbr	DESIGNED -	REVISED -	STATE OF ILLINOIS DEPARTMENT OF TRANSPORTATION	FIBER OPTIC CONDUIT AND CABLE PROJECT I-74 (FROM WOODHULL TO Moline) CONTINUED	F.A.P. RTE.	SECTION	COUNTY	TOTAL SHEETS	SHEET NO.
	Woodhull to Moline (1-95) - Final 4-30-12.dgn	DRAWN -	REVISED -			VAR	D4 FIBER OPTIC 2013	HENRY/ROCK ISL	96	62
	PLOT SCALE : 164.7568 ' / in.	CHECKED -	REVISED -			CONTRACT NO. 68B04				
	PLOT DATE : 5/1/2012	DATE -	REVISED -		SCALE:	SHEET NO. 59 OF 62 SHEETS	STA.	TO STA.	ILLINOIS FED. AID PROJECT	



UNDRGRD C MD
1364 FT.

I-74

UNDRGRD C MD
268 FT. (PUSHED)
UNDER STRUCTURE

N. 1900TH AVE.

N. 1900TH AVE.

SCHEDULE OF QUANTITIES		
ITS FIBER (WOODHULL TO MOLINE) - SHEET 60		
UNDERGROUND CONDUIT, MULTI-DUCT, 7-16MM MICRODUCTS	FOOT	1632.0
FIBER OPTIC CABLE 96 FIBERS, SINGLE MODE	FOOT	1632.0

Imagery Date: 9/12/2011 1994

© 2011 Google

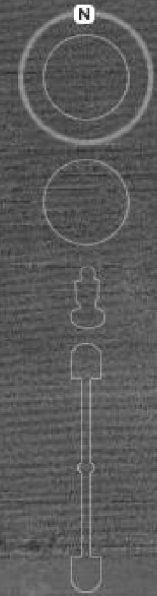
Google earth

N 1900th Ave

41°25'32.08" N 90°19'41.97" W elev 702 ft

Eye alt 2791 ft

FILE NAME = c:\notes\68b04 fiber plans\68b04\68B04	USER NAME = keithbr	DESIGNED -	REVISED -	STATE OF ILLINOIS DEPARTMENT OF TRANSPORTATION	FIBER OPTIC CONDUIT AND CABLE PROJECT I-74 (FROM WOODHULL TO MOLINE) CONTINUED	F.A.P. RTE.	SECTION	COUNTY	TOTAL SHEETS	SHEET NO.
	Woodhull to Moline (1-95) - Final 4-30-12.dgn	DRAWN -	REVISED -			VAR	D4 FIBER OPTIC 2013	HENRY/ROCK ISL	96	63
	PLOT SCALE = 164,7568 ' / in.	CHECKED -	REVISED -			CONTRACT NO. 68B04				
	PLOT DATE = 5/1/2012	DATE -	REVISED -			SCALE:	SHEET NO. 60 OF 62 SHEETS	STA.	TO STA.	



UNDRGRD C MD
1555 FT.

I-74



©2011 Google

Google earth

Imagery Date: 9/12/2011 1994

41°25'48.02" N 90°19'42.44" W elev 641 ft

Eye alt 2791 ft

SCHEDULE OF QUANTITIES		
ITS FIBER (WOODHULL TO MOLINE) - SHEET 61		
UNDERGROUND CONDUIT, MULTI-DUCT, 7-16MM MICRODUCTS	FOOT	1555.0
FIBER OPTIC CABLE 96 FIBERS, SINGLE MODE	FOOT	1555.0

FILE NAME =	USER NAME = keithbr	DESIGNED -	REVISED -
c:\notes\68b04 fiber plans\68b04\68B04	- Woodhull to Moline (1-95) - Final 4-30-12.dgn	DRAWN -	REVISED -
	PLOT SCALE = 164.7568' / 1" in.	CHECKED -	REVISED -
	PLOT DATE = 5/1/2012	DATE -	REVISED -

STATE OF ILLINOIS
DEPARTMENT OF TRANSPORTATION

FIBER OPTIC CONDUIT AND CABLE PROJECT
I-74 (FROM WOODHULL TO MOLINE) CONTINUED

SCALE: SHEET NO. 61 OF 62 SHEETS STA. TO STA.

F.A.P. RTE.	SECTION	COUNTY	TOTAL SHEETS	SHEET NO.
VAR	D4 FIBER OPTIC 2013	HENRY/ROCK ISL	96	64
CONTRACT NO. 68B04				
ILLINOIS FED. AID PROJECT				



SCHEDULE OF QUANTITIES		
ITS FIBER (WOODHULL TO MOLINE) - SHEET 62		
UNDERGROUND CONDUIT, MULTI-DUCT, 7-16MM MICRODUCTS	FOOT	1556.0
FIBER OPTIC CABLE 96 FIBERS, SINGLE MODE	FOOT	1606.0
COMMUNICATIONS VAULT	EACH	1.0

Imagery Date: 9/12/2011 1994

41°26'03.68" N 90°19'42.18" W elev 689 ft

Eye alt 2791 ft

Google earth

FILE NAME =	USER NAME = keithbr	DESIGNED -	REVISED -	STATE OF ILLINOIS DEPARTMENT OF TRANSPORTATION	FIBER OPTIC CONDUIT AND CABLE PROJECT I-74 (FROM WOODHULL TO MOLINE) CONTINUED	F.A.P. RTE.	SECTION	COUNTY	TOTAL SHEETS	SHEET NO.
c:\notes\68b04 fiber plans\68b04\68B04	- Woodhull to Moline (1-95) - Final 4-30-12.dgn	DRAWN -	REVISED -			VAR	D4 FIBER OPTIC 2013	HENRY/ROCK ISL	96	65
	PLOT SCALE = 164.7568 ' / in.	CHECKED -	REVISED -			CONTRACT NO. 68B04				
	PLOT DATE = 5/1/2012	DATE -	REVISED -			SCALE:	SHEET NO. 62 OF 62 SHEETS	STA.	TO STA.	ILLINOIS FED. AID PROJECT



SCHEDULE OF QUANTITIES		
ITS FIBER (I-74/I-280 INTERCHANGE TO MOLINE) - SHEET 1		
UNDERGROUND CONDUIT, MULTI-DUCT, 7-16MM MICRODUCTS	FOOT	2357.0
FIBER OPTIC CABLE 96 FIBERS, SINGLE MODE	FOOT	2407.0
COMMUNICATIONS VAULT	EACH	1.0

Imagery Date: 9/12/2011 1994

41°26'20.21" N 90°19'55.58" W elev 695 ft

Eye alt 2791 ft

FILE NAME =	USER NAME = keithbr	DESIGNED -	REVISED -
c:\notes\68b04 fiber plans\68b04\68b04	- Woodhull to Moline (I-95) - Final 4-30-12.dgn	DRAWN -	REVISED -
	PLOT SCALE = 171.6216" / in.	CHECKED -	REVISED -
	PLOT DATE = 5/1/2012	DATE -	REVISED -

STATE OF ILLINOIS
DEPARTMENT OF TRANSPORTATION

FIBER OPTIC CONDUIT AND CABLE PROJECT			
I-74 / I-280 (FROM I-74 / I-80 INTERCHANGE TO MOLINE)			
SCALE:	SHEET NO. 1 OF 21 SHEETS	STA.	TO STA.

F.A.P. RTE.	SECTION	COUNTY	TOTAL SHEETS	SHEET NO.
VAR	D4 FIBER OPTIC 2013	HENRY/ROCK ISL	96	66
CONTRACT NO. 68B04				
ILLINOIS FED. AID PROJECT				



A COMBINATION OF PUSHED AND TRENCHED CONDUIT WILL BE REQUIRED IN THIS AREA OF ROUGH TERRAIN AND TREE GROVES. THE CONTRACTOR SHALL VERIFY ALL FIELD CONDITIONS PRIOR TO BIDDING.

UNDRGRD C MD
2266 FT.

I-74 / I-280

74

280

© 2011 Google

Google earth

SCHEDULE OF QUANTITIES		
ITS FIBER (I-74/I-280 INTERCHANGE TO MOLINE) - SHEET 2		
UNDERGROUND CONDUIT, MULTI-DUCT, 7-16MM MICRODUCTS	FOOT	2266.0
FIBER OPTIC CABLE 96 FIBERS, SINGLE MODE	FOOT	2266.0

Imagery Date: 9/12/2011 1994

41°26'24.96" N 90°20'02.51" W elev 683 ft

Eye alt 2791 ft

FILE NAME = S:\GEN\DRAWING\ITS Fiber Project\68B04\68B04.dwg	USER NAME = howald	DESIGNED -	REVISED -	STATE OF ILLINOIS DEPARTMENT OF TRANSPORTATION	FIBER OPTIC CONDUIT AND CABLE PROJECT I-74 / I-280 (I-74 / I-80 INTERCHANGE TO MOLINE) CONTINUED			F.A.P. RTE.	SECTION	COUNTY	TOTAL SHEETS	SHEET NO.
	WOODHULL TO MOLINE (I-95) - Final 4-30-12	DRAWN -	REVISED -					VAR	D4 FIBER OPTIC 2013	HENRY/ROCK ISL	96	67
	PLOT SCALE = 171.6216" / in.	CHECKED -	REVISED -		CONTRACT NO. 68B04			ILLINOIS FED. AID PROJECT				
	PLOT DATE = 5/23/2012	DATE -	REVISED -		SCALE:	SHEET NO. 2 OF 21 SHEETS	STA.	TO STA.				



COMMUNICATIONS VAULT
1.0 EACH

I-74 / I-280

UNDRGRD C MD
905 FT.

UNDRGRD C MD
1147 FT.

UNDRGRD C MD
359 FT.

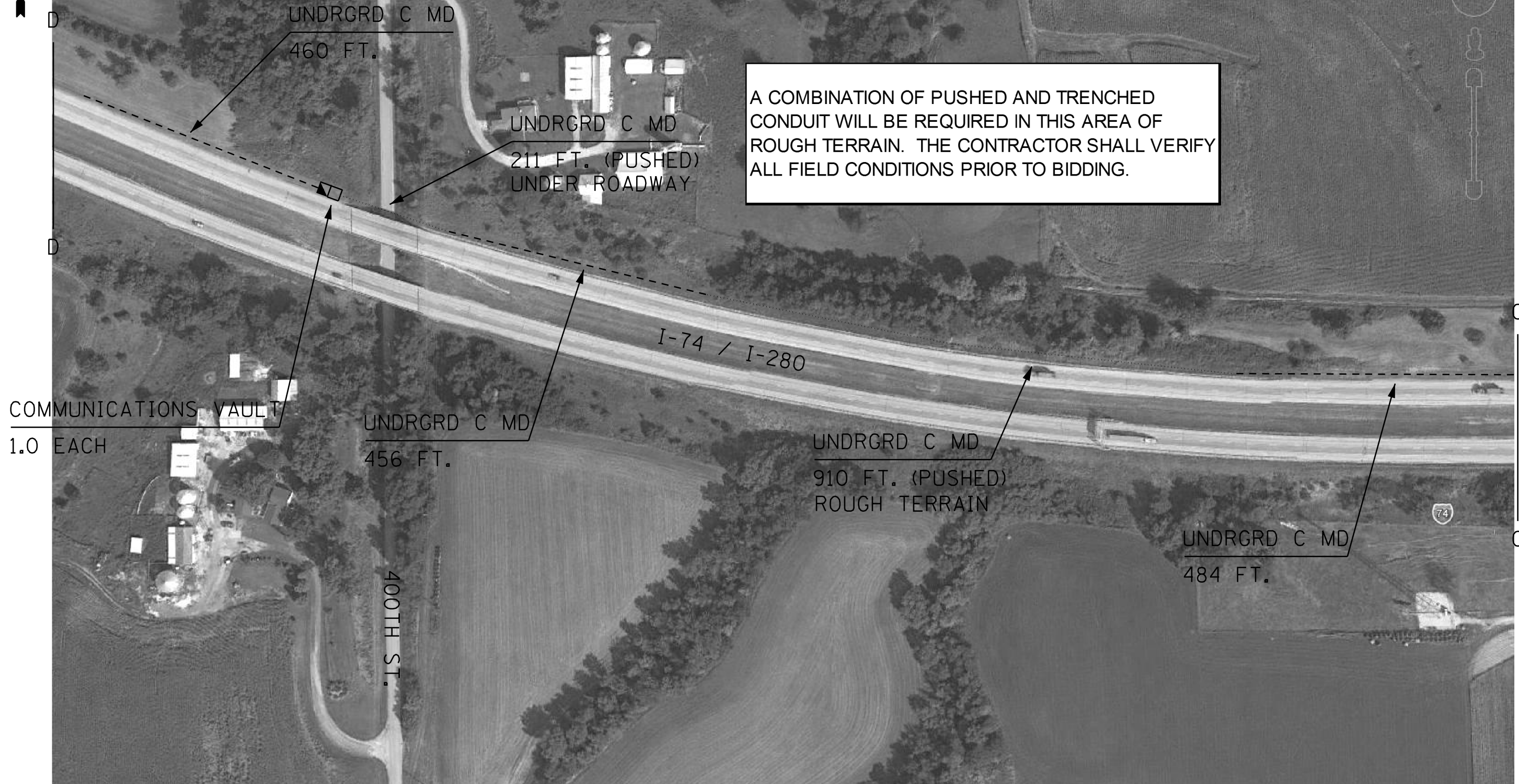
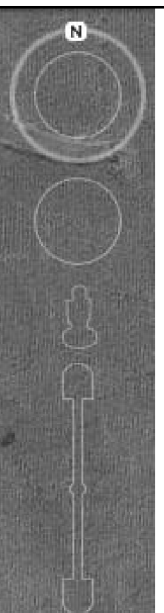
© 2011 Google

Google™ earth

41°26'26.91" N 90°20'48.51" W elev 698 ft

Eye alt 2791 ft

FILE NAME =	USER NAME = keithbr	DESIGNED -	REVISED -	STATE OF ILLINOIS DEPARTMENT OF TRANSPORTATION	FIBER OPTIC CONDUIT AND CABLE PROJECT I-74 /I-280 (FROM I-74 /I-80 INTERCHANGE TO MOLINE) CONTINUED	F.A.P. RTE.	SECTION	COUNTY	TOTAL SHEETS	SHEET NO.	
cs\notes\68b04 fiber plans\68b04\68B04	Woodhull to Moline (I-95) - Final 4-30-12.dgn	DRAWN -	REVISED -			VAR	D4 FIBER OPTIC 2013	HENRY/ROCK ISL	96	68	
	PLOT SCALE = 171.6216 ' / in.	CHECKED -	REVISED -			CONTRACT NO. 68B04					
	PLOT DATE = 5/1/2012	DATE -	REVISED -			SCALE:	SHEET NO. 3 OF 21 SHEETS	STA.	TO STA.		
				ILLINOIS FED. AID PROJECT							



A COMBINATION OF PUSHED AND TRENCHED CONDUIT WILL BE REQUIRED IN THIS AREA OF ROUGH TERRAIN. THE CONTRACTOR SHALL VERIFY ALL FIELD CONDITIONS PRIOR TO BIDDING.

SCHEDULE OF QUANTITIES		
ITS FIBER (I-74/I-280 INTERCHANGE TO MOLINE) - SHEET 4		
UNDERGROUND CONDUIT, MULTI-DUCT, 7-16MM MICRODUCTS	FOOT	2521.0
FIBER OPTIC CABLE 96 FIBERS, SINGLE MODE	FOOT	2571.0
COMMUNICATIONS VAULT	EACH	1.0

Imagery Date: 9/12/2011 1994

41°26'27.01" N 90°21'04.75" W elev 679 ft

Eye alt 2791 ft

FILE NAME =	USER NAME = howald	DESIGNED -	REVISED -
S:\GEN\DRAW\ITS Fiber Project\68B04\68B04 - Woodhull to Moline (I-95) - Final 4-30-12.dwg		DRAWN -	REVISED -
	PLOT SCALE = 171.6216" / in.	CHECKED -	REVISED -
	PLOT DATE = 5/23/2012	DATE -	REVISED -

STATE OF ILLINOIS
DEPARTMENT OF TRANSPORTATION

FIBER OPTIC CONDUIT AND CABLE PROJECT
I-74 / I-280 (FROM WOODHULL TO MOLINE) CONTINUED

SCALE:	SHEET NO. 4 OF 21 SHEETS	STA.	TO STA.
--------	--------------------------	------	---------

F.A.P. RTE.	SECTION	COUNTY	TOTAL SHEETS	SHEET NO.
VAR	D4 FIBER OPTIC 2013	HENRY/ROCK ISL	96	69
CONTRACT NO. 68B04				
ILLINOIS FED. AID PROJECT				



A COMBINATION OF PUSHED AND TRENCHED CONDUIT WILL BE REQUIRED IN THIS AREA OF ROUGH TERRAIN. THE CONTRACTOR SHALL VERIFY ALL FIELD CONDITIONS PRIOR TO BIDDING.

UNDRGRD C MD
753 FT.

UNDRGRD C MD
448 FT. (PUSHED)
ROUGH TERRAIN

UNDRGRD C MD
1103 FT.

I-74 / I-280



Google earth

SCHEDULE OF QUANTITIES		
ITS FIBER (I-74/I-280 INTERCHANGE TO MOLINE) - SHEET 5		
UNDERGROUND CONDUIT, MULTI-DUCT, 7-16MM MICRODUCTS	FOOT	2304.0
FIBER OPTIC CABLE 96 FIBERS, SINGLE MODE	FOOT	2304.0

Imagery Date: 9/12/2011 1994

41°26'32.09" N 90°21'35.87" W elev 669 ft

Eye alt 2791 ft

FILE NAME : c:\notes\68b04 fiber plans\68b04\68B04	USER NAME = keithbr	DESIGNED -	REVISED -	STATE OF ILLINOIS DEPARTMENT OF TRANSPORTATION	FIBER OPTIC CONDUIT AND CABLE PROJECT I-74 /I-280 (FROM I-74 /I-80 INTERCHANGE TO MOLINE) CONTINUED	F.A.P. RTE.	SECTION	COUNTY	TOTAL SHEETS	SHEET NO.
	Woodhull to Moline (I-95) - Final 4-30-12.dgn	DRAWN -	REVISED -			VAR	D4 FIBER OPTIC 2013	HENRY/ROCK ISL	96	70
	PLOT SCALE = 171.6216 ' / in.	CHECKED -	REVISED -			CONTRACT NO. 68B04				
	PLOT DATE = 5/1/2012	DATE -	REVISED -			ILLINOIS FED. AID PROJECT				
		SCALE:		SHEET NO. 5 OF 21 SHEETS		STA.		TO STA.		



COMMUNICATIONS VAULT
1.0 EACH

UNDRGRD C MD
611 FT. (PUSHED)
ROUGH TERRAIN

626 FT.

Imagery Date: 9/12/2011 1994

41°26'53.40" N 90°22'07.81" W elev 662 ft

Google™ earth

Eye alt 2791 ft

FILE NAME =	USER NAME = keithbr	DESIGNED -	REVISED -	STATE OF ILLINOIS DEPARTMENT OF TRANSPORTATION	FIBER OPTIC CONDUIT AND CABLE PROJECT I-74 /I-280 (FROM I-74 /I-80 INTERCHANGE TO MOLINE) CONTINUED			F.A.P. RTE.	SECTION	COUNTY	TOTAL SHEETS	SHEET NO.
c:\notes\68b04 fiber plans\68b04\68B04	Woodhull to Moline (I-95) - Final 4-30-12.dgn	DRAWN -	REVISED -		VAR	D4 FIBER OPTIC 2013	HENRY/ROCK ISL	96	71			
	PLOT SCALE = 171.6216' / in.	CHECKED -	REVISED -		CONTRACT NO. 68B04							
	PLOT DATE = 5/1/2012	DATE	REVISED -		SCALE:	SHEET NO. 6 OF 21 SHEETS	STA.	TO STA.		ILLINOIS FED. AID PROJECT		



River Bluff Rd

G

G



UNDRGRD C MD
2103 FT.

I-74 / I-280



© 2011 Google

Google earth

SCHEDULE OF QUANTITIES		
ITS FIBER (I-74/I-280 INTERCHANGE TO MOLINE) - SHEET 7		
UNDERGROUND CONDUIT, MULTI-DUCT, 7-16MM MICRODUCTS	FOOT	2103.0
FIBER OPTIC CABLE 96 FIBERS, SINGLE MODE	FOOT	2103.0

Imagery Date: 9/12/2011 1994

41°27'02.28" N 90°22'16.92" W elev 676 ft

F F

Eye alt 2791 ft

FILE NAME = c:\notes\68b04 fiber plans\68b04\68B04	USER NAME = keithbr	DESIGNED -	REVISED -
	Woodhull to Moline (I-95) - Final 4-30-12.dgn	DRAWN -	REVISED -
	PLOT SCALE = 171.6216 ' / in.	CHECKED -	REVISED -
	PLOT DATE = 5/1/2012	DATE -	REVISED -

STATE OF ILLINOIS
DEPARTMENT OF TRANSPORTATION

FIBER OPTIC CONDUIT AND CABLE PROJECT			
I-74 /I-280 (FROM I-74 /I-80 INTERCHANGE TO MOLINE) CONTINUED			
SCALE:	SHEET NO. 7 OF 21 SHEETS	STA.	TO STA.

F.A.P. RTE.	SECTION	COUNTY	TOTAL SHEETS	SHEET NO.
VAR	D4 FIBER OPTIC 2013	HENRY/ROCK ISL	96	72
CONTRACT NO. 68B04				
ILLINOIS FED. AID PROJECT				



THE CONTRACTOR SHALL INSTALL A 3" DIAMETER GALVANIZED STEEL CONDUIT UNDER THE RAILROAD TRACKS IN ACCORDANCE WITH RAILROAD REQUIRMENTS. THE COST OF THE CONDUIT SHALL BE INCLUDED IN THE BID PRICE FOR "UNDERGROUND CONDUIT, MULTI-DUCT, 7-16MM MICRODUCTS"

UNDRGRD C MD
778 FT.

UNDRGRD C MD
487 FT. (PUSHED)
UNDER ROADWAY AND
RAILROAD TRACKS

COMMUNICATIONS VAULT
1.0 EACH

UNDRGRD C MD
800 FT.

BNSF RAILROAD
BRIAR BLUFF RD.

US ROUTE 6

US ROUTE 6

I-74 / I-280

Google earth

© 2011 Google

41°27'18.46" N 90°22'33.08" W elev 653 ft

Eye alt 2791 ft

SCHEDULE OF QUANTITIES		
ITS FIBER (I-74/I-280 INTERCHANGE TO MOLINE) - SHEET 8		
UNDERGROUND CONDUIT, MULTI-DUCT, 7-16MM MICRODUCTS	FOOT	2066.0
FIBER OPTIC CABLE 96 FIBERS, SINGLE MODE	FOOT	2116.0
COMMUNICATIONS VAULT	EACH	1.0

Imagery Date: 9/12/2011 1993

FILE NAME =	USER NAME = howalder	DESIGNED -	REVISED -
S:\GEN\DRAW\ITS Fiber Project\68B04\68B04 - Woodhull to Moline (I-95) - Final 4-30-12.dwg		DRAWN -	REVISED -
	PLOT SCALE = 171.6216" / in.	CHECKED -	REVISED -
	PLOT DATE = 5/23/2012	DATE -	REVISED -

STATE OF ILLINOIS
DEPARTMENT OF TRANSPORTATION

FIBER OPTIC CONDUIT AND CABLE PROJECT			
I-74 /I-280 (FROM I-74 /I-80 INTERCHANGE TO MOLINE) CONTINUED			
SCALE:	SHEET NO. 8 OF 21 SHEETS	STA.	TO STA.

F.A.P. RTE.	SECTION	COUNTY	TOTAL SHEETS	SHEET NO.
VAR	D4 FIBER OPTIC 2013	HENRY/ROCK ISL	96	73
CONTRACT NO. 68B04				
ILLINOIS FED. AID PROJECT				



H

H

I-74 / I-280

UNDRGRD C MD
2429 FT.

© 2011 Google



Google earth

SCHEDULE OF QUANTITIES		
ITS FIBER (I-74/I-280 INTERCHANGE TO MOLINE) - SHEET 9		
UNDERGROUND CONDUIT, MULTI-DUCT, 7-16MM MICRODUCTS	FOOT	2429.0
FIBER OPTIC CABLE 96 FIBERS, SINGLE MODE	FOOT	2429.0

Imagery Date: 9/12/2011 1993

41°27'34.52" N 90°22'49.33" W elev 595 ft

G

G

Eye alt 2791 ft

FILE NAME : c:\notes\68b04 fiber plans\68b04\68B04	USER NAME : keithbr	DESIGNED -	REVISED -	STATE OF ILLINOIS DEPARTMENT OF TRANSPORTATION	FIBER OPTIC CONDUIT AND CABLE PROJECT I-74 /I-280 (FROM I-74 /I-80 INTERCHANGE TO MOLINE) CONTINUED			F.A.P. RTE.	SECTION	COUNTY	TOTAL SHEETS	SHEET NO.
	Woodhull to Moline (I-95) - Final 4-30-12.dgn	DRAWN -	REVISED -					VAR	D4 FIBER OPTIC 2013	HENRY/ROCK ISL	96	74
	PLOT SCALE : 171.6216 ' / in.	CHECKED -	REVISED -		CONTRACT NO. 68B04			ILLINOIS FED. AID PROJECT				
	PLOT DATE : 5/1/2012	DATE -	REVISED -		SCALE:	SHEET NO. 9 OF 21 SHEETS	STA.	TO STA.				



SCHEDULE OF QUANTITIES		
ITS FIBER (I-74/I-280 INTERCHANGE TO MOLINE) - SHEET 10		
UNDERGROUND CONDUIT, MULTI-DUCT, 7-16MM MICRODUCTS	FOOT	2469.0
FIBER OPTIC CABLE 96 FIBERS, SINGLE MODE	FOOT	2519.0
COMMUNICATIONS VAULT	EACH	1.0

Imagery Date: 9/12/2011 1993

41°27'44.48" N 90°23'17.74" W elev 571 ft

Eye alt 2791 ft

FILE NAME =	USER NAME = keithbr	DESIGNED -	REVISED -
c:\notes\68b04 fiber plans\68b04\68B04	- Woodhull to Moline (I-95) - Final 4-30-12.dgn	DRAWN -	REVISED -
	PLOT SCALE = 171.6216" / in.	CHECKED -	REVISED -
	PLOT DATE = 5/1/2012	DATE -	REVISED -

STATE OF ILLINOIS
DEPARTMENT OF TRANSPORTATION

FIBER OPTIC CONDUIT AND CABLE PROJECT
I-74 /I-280 (FROM I-74 /I-80 INTERCHANGE TO MOLINE) CONTINUED

F.A.P. RTE.	SECTION	COUNTY	TOTAL SHEETS	SHEET NO.
VAR	D4 FIBER OPTIC 2013	HENRY/ROCK ISL	96	75
CONTRACT NO. 68B04				
ILLINOIS FED. AID PROJECT				

SCALE: SHEET NO. 10 OF 21 SHEETS STA. TO STA.



N

I

I

UNDRGRD C MD
1837 FT.

I-74 / I-280

COMMUNICATIONS VAULT
1.0 EACH

UNDRGRD C MD
891 FT.

© 2011 Google

SCHEDULE OF QUANTITIES		
ITS FIBER (I-74/I-280 INTERCHANGE TO MOLINE) - SHEET 11		
UNDERGROUND CONDUIT, MULTI-DUCT, 7-16MM MICRODUCTS	FOOT	2728.0
FIBER OPTIC CABLE 96 FIBERS, SINGLE MODE	FOOT	2778.0
COMMUNICATIONS VAULT	EACH	1.0

Imagery Date: 9/12/2011 1993

41°27'36.38" N 90°23'55.48" W elev 573 ft

Eye alt 2791 ft

FILE NAME = c:\notes\68b04 fiber plans\68b04\68B04	USER NAME = keithbr	DESIGNED -	REVISED -	STATE OF ILLINOIS DEPARTMENT OF TRANSPORTATION	FIBER OPTIC CONDUIT AND CABLE PROJECT I-74 /I-280 (FROM I-74 /I-80 INTERCHANGE TO MOLINE) CONTINUED			F.A.P. RTE.	SECTION	COUNTY	TOTAL SHEETS	SHEET NO.
	Woodhull to Moline (I-95) - Final 4-30-12.dgn	DRAWN -	REVISED -					VAR	D4 FIBER OPTIC 2013	HENRY/ROCK ISL	96	76
	PLOT SCALE = 171.6216' / in.	CHECKED -	REVISED -					CONTRACT NO. 68B04				
	PLOT DATE = 5/1/2012	DATE -	REVISED -					ILLINOIS FED. AID PROJECT				
SCALE:		SHEET NO. 11 OF 21 SHEETS		STA.		TO STA.						



UNDRGRD C MD
2574 FT.

I-74 / I-280

US 6

6

© 2011 Google

Google earth

41°27'28.32" N 90°24'21.46" W elev 573 ft

Eye alt 2791 ft

SCHEDULE OF QUANTITIES		
ITS FIBER (I-74/I-280 INTERCHANGE TO MOLINE) - SHEET 12		
UNDERGROUND CONDUIT, MULTI-DUCT, 7-16MM MICRODUCTS	FOOT	2574.0
FIBER OPTIC CABLE 96 FIBERS, SINGLE MODE	FOOT	2574.0

Imagery Date: 9/12/2011 1993

FILE NAME =	USER NAME = keithbr	DESIGNED -	REVISED -
c:\notes\68b04 fiber plans\68b04\68B04	- Woodhull to Moline (I-95) - Final 4-30-12.dgn	DRAWN -	REVISED -
	PLOT SCALE = 171.6216' / in.	CHECKED -	REVISED -
	PLOT DATE = 5/1/2012	DATE -	REVISED -

STATE OF ILLINOIS
DEPARTMENT OF TRANSPORTATION

FIBER OPTIC CONDUIT AND CABLE PROJECT
I-74 /I-280 (FROM I-74 /I-80 INTERCHANGE TO MOLINE) CONTINUED

SCALE: SHEET NO. 12 OF 21 SHEETS STA. TO STA.

F.A.P. RTE.	SECTION	COUNTY	TOTAL SHEETS	SHEET NO.
VAR	D4 FIBER OPTIC 2013	HENRY/ROCK ISL	96	77
CONTRACT NO. 68B04				
ILLINOIS FED. AID PROJECT				



UNDRGRD C MD
1953 FT.

UNDRGRD C MD
535 FT.

I-74 / I-280

COMMUNICATIONS VAULTS
1.0 EACH

US 6

Autumn Creek Dr

Google earth

© 2011 Google

41°27'20.71" N 90°24'53.60" W elev 574 ft

Eye alt 2791 ft

SCHEDULE OF QUANTITIES

ITS FIBER (I-74/I-280 INTERCHANGE TO MOLINE) - SHEET 13

UNDERGROUND CONDUIT, MULTI-DUCT, 7-16MM MICRODUCTS	FOOT	2488.0
FIBER OPTIC CABLE 96 FIBERS, SINGLE MODE	FOOT	2538.0
COMMUNICATIONS VAULT	EACH	1.0

Imagery Date: 9/12/2011 1993

FILE NAME =
c:\notes\68b04 fiber plans\68b04\68b04

USER NAME = keithbr
- Woodhull to Moline (I-95) - Final 4-30-12.dgn
PLOT SCALE = 171.6216' / in.
PLOT DATE = 5/1/2012

DESIGNED -	REVISED -
DRAWN -	REVISED -
CHECKED -	REVISED -
DATE -	REVISED -

STATE OF ILLINOIS
DEPARTMENT OF TRANSPORTATION

FIBER OPTIC CONDUIT AND CABLE PROJECT
I-74 /I-280 (FROM I-74 /I-80 INTERCHANGE TO MOLINE) CONTINUED

SCALE: SHEET NO. 13 OF 21 SHEETS STA. TO STA.

F.A.P. RTE.	SECTION	COUNTY	TOTAL SHEETS	SHEET NO.
VAR	D4 FIBER OPTIC 2013	HENRY/ROCK ISL	96	78
CONTRACT NO. 68B04				
ILLINOIS FED. AID PROJECT				



ROCK ISLAND COUNTY HENRY COUNTY



UNDRGRD C MD
217 FT.

UNDRGRD C MD
840 FT.

UNDRGRD C MD
176 FT. (PUSHED)
UNDER ROADWAY

UNDRGRD C MD
1031 FT.

COMMUNICATIONS VAULT
1.0 EACH

UNDRGRD C MD
163 FT.

I-74 / I-280

US 6

69th Ave

White Oak Dr

Timber Ridge Dr

© 2011 Google

ROCK ISLAND COUNTY HENRY COUNTY

Imagery Date: 9/12/2011 1993

41°27'15.95" N 90°25'28.24" W elev 575 ft

Eye alt 2791 ft

SCHEDULE OF QUANTITIES		
ITS FIBER (I-74/I-280 INTERCHANGE TO MOLINE) - SHEET 14		
UNDERGROUND CONDUIT, MULTI-DUCT, 7-16MM MICRODUCTS	FOOT	2427.0
FIBER OPTIC CABLE 96 FIBERS, SINGLE MODE	FOOT	2477.0
COMMUNICATIONS VAULT	EACH	1.0

FILE NAME =	USER NAME = keithbr	DESIGNED -	REVISED -
c:\notes\68b04 fiber plans\68b04\68b04	- Woodhull to Moline (I-95) - Final 4-30-12.dgn	DRAWN -	REVISED -
	PLOT SCALE = 171.6216" / in.	CHECKED -	REVISED -
	PLOT DATE = 5/1/2012	DATE -	REVISED -

STATE OF ILLINOIS
DEPARTMENT OF TRANSPORTATION

FIBER OPTIC CONDUIT AND CABLE PROJECT			
I-74 /I-280 (FROM I-74 /I-80 INTERCHANGE TO MOLINE) CONTINUED			
SCALE:	SHEET NO. 14 OF 21 SHEETS	STA.	TO STA.

F.A.P. RTE.	SECTION	COUNTY	TOTAL SHEETS	SHEET NO.
VAR	D4 FIBER OPTIC 2013	HENRY/ROCK ISL	96	79
CONTRACT NO. 68B04				
ILLINOIS FED. AID PROJECT				



N
N
N

M
M



© 2011 Google

Google earth

41°27'13.95" N 90°25'59.05" W elev 578 ft

Eye alt 2791 ft

SCHEDULE OF QUANTITIES		
ITS FIBER (I-74/I-280 INTERCHANGE TO MOLINE) - SHEET 15		
UNDERGROUND CONDUIT, MULTI-DUCT, 7-16MM MICRODUCTS	FOOT	2447.0
FIBER OPTIC CABLE 96 FIBERS, SINGLE MODE	FOOT	2447.0

Imagery Date: 9/12/2011 1993

FILE NAME =	USER NAME = keithbr	DESIGNED -	REVISED -
ct:\notes\68b04 fiber plans\68b04\68B04	- Woodhull to Moline (I-95) - Final 4-30-12.dgn	DRAWN -	REVISED -
	PLOT SCALE = 171.6216" / in.	CHECKED -	REVISED -
	PLOT DATE = 5/1/2012	DATE -	REVISED -

STATE OF ILLINOIS
DEPARTMENT OF TRANSPORTATION

FIBER OPTIC CONDUIT AND CABLE PROJECT			
I-74 /I-280 (FROM I-74 /I-80 INTERCHANGE TO MOLINE) CONTINUED			
SCALE:	SHEET NO. 15 OF 21 SHEETS	STA.	TO STA.

F.A.P. RTE.	SECTION	COUNTY	TOTAL SHEETS	SHEET NO.
VAR	D4 FIBER OPTIC 2013	HENRY/ROCK ISL	96	80
CONTRACT NO. 68B04				
ILLINOIS FED. AID PROJECT				



SCHEDULE OF QUANTITIES		
ITS FIBER (I-74/I-280 INTERCHANGE TO MOLINE) - SHEET 16		
UNDERGROUND CONDUIT, MULTI-DUCT, 7-16MM MICRODUCTS	FOOT	2428.0
FIBER OPTIC CABLE 96 FIBERS, SINGLE MODE	FOOT	2478.0
COMMUNICATIONS VAULT	EACH	1.0

Imagery Date: 9/12/2011 1993

41°27'12.10" N 90°26'31.63" W elev 574 ft

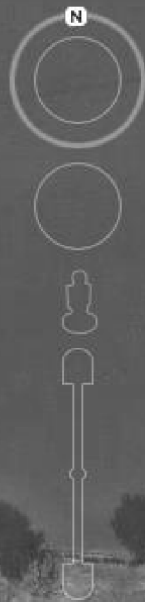
Eye alt 2791 ft

FILE NAME = c:\notes\68b04 fiber plans\68b04\68B04	USER NAME = keithbr	DESIGNED -	REVISED -
	Woodhull to Moline (I-95) - Final 4-30-12.dgn	DRAWN -	REVISED -
	PLOT SCALE = 171.6216' / in.	CHECKED -	REVISED -
	PLOT DATE = 5/1/2012	DATE -	REVISED -

STATE OF ILLINOIS
DEPARTMENT OF TRANSPORTATION

FIBER OPTIC CONDUIT AND CABLE PROJECT			
I-74 /I-280 (FROM I-74 /I-80 INTERCHANGE TO MOLINE) CONTINUED			
SCALE:	SHEET NO. 16 OF 21 SHEETS	STA.	TO STA.

F.A.P. RTE.	SECTION	COUNTY	TOTAL SHEETS	SHEET NO.
VAR	D4 FIBER OPTIC 2013	HENRY/ROCK ISL	96	81
CONTRACT NO. 68B04				
ILLINOIS FED. AID PROJECT				



UNDRGRD C MD
2452 FT.

I-74 / I-280

E 1st Ave

6 US 6

E 2nd St

E 3rd St

E 4th Street A

E 4th St

E 5th St

E 6th St

E 7th St

Google earth

SCHEDULE OF QUANTITIES
ITS FIBER (I-74/I-280 INTERCHANGE TO MOLINE) - SHEET 17

UNDERGROUND CONDUIT, MULTI-DUCT, 7-16MM MICRODUCTS	FOOT	2452.0
FIBER OPTIC CABLE 96 FIBERS, SINGLE MODE	FOOT	2452.0

Imagery Date: 9/12/2011 1993

41°27'10.02" N 90°27'04.41" W elev 572 ft

Eye alt 2791 ft

FILE NAME =	USER NAME = keithbr	DESIGNED -	REVISED -
cr:\notes\68b04 fiber plans\68b04\68B04	- Woodhull to Moline (I-95) - Final 4-30-12.dgn	DRAWN -	REVISED -
	PLOT SCALE = 171.6216" / in.	CHECKED -	REVISED -
	PLOT DATE = 5/1/2012	DATE -	REVISED -

STATE OF ILLINOIS
DEPARTMENT OF TRANSPORTATION

FIBER OPTIC CONDUIT AND CABLE PROJECT			
I-74 /I-280 (FROM I-74 /I-80 INTERCHANGE TO MOLINE) CONTINUED			
SCALE:	SHEET NO. 17 OF 21 SHEETS	STA.	TO STA.

F.A.P. RTE.	SECTION	COUNTY	TOTAL SHEETS	SHEET NO.
VAR	D4 FIBER OPTIC 2013	HENRY/ROCK ISL	96	82
CONTRACT NO. 68B04				
ILLINOIS FED. AID PROJECT				



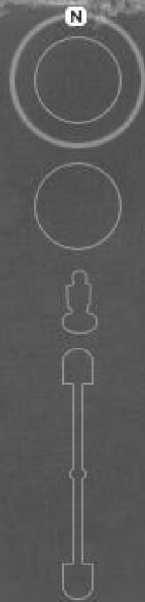
SCHEDULE OF QUANTITIES		
ITS FIBER (I-74/I-280 INTERCHANGE TO MOLINE) - SHEET 18		
UNDERGROUND CONDUIT, MULTI-DUCT, 7-16MM MICRODUCTS	FOOT	2456.0
FIBER OPTIC CABLE 96 FIBERS, SINGLE MODE	FOOT	2506.0
COMMUNICATIONS VAULT	EACH	1.0

FILE NAME =	USER NAME = keithbr	DESIGNED -	REVISED -
cr:\notes\68b04 fiber plans\68b04\68B04	- Woodhull to Moline (1-95) - Final 4-30-12.dgn	DRAWN -	REVISED -
	PLOT SCALE = 171.6216' / in.	CHECKED -	REVISED -
	PLOT DATE = 5/1/2012	DATE -	REVISED -

STATE OF ILLINOIS	
DEPARTMENT OF TRANSPORTATION	

FIBER OPTIC CONDUIT AND CABLE PROJECT		
I-74 /I-280 (FROM I-74 /I-80 INTERCHANGE TO MOLINE) CONTINUED		
SCALE:	SHEET NO. 18 OF 21 SHEETS	STA. TO STA.

F.A.P. RTE.	SECTION	COUNTY	TOTAL SHEETS	SHEET NO.
VAR	D4 FIBER OPTIC 2013	HENRY/ROCK ISL	96	83
CONTRACT NO. 68B04				
ILLINOIS FED. AID PROJECT				



SCHEDULE OF QUANTITIES		
ITS FIBER (I-74/I-280 INTERCHANGE TO MOLINE) - SHEET 19		
UNDERGROUND CONDUIT, MULTI-DUCT, 7-16MM MICRODUCTS	FOOT	2409.0
FIBER OPTIC CABLE 96 FIBERS, SINGLE MODE	FOOT	2459.0
COMMUNICATIONS VAULT	EACH	1.0

Imagery Date: 9/12/2011 1993

41°27'15.00" N 90°28'09.60" W elev 571 ft

Eye alt 2791 ft

FILE NAME =
c:\notes\68b04 fiber plans\68b04\68B04

USER NAME = keithbr
- Woodhull to Moline (1-95) - Final 4-30-12.dgn
PLOT SCALE = 171.6216' / in.
PLOT DATE = 5/1/2012

DESIGNED -
DRAWN -
CHECKED -
DATE -

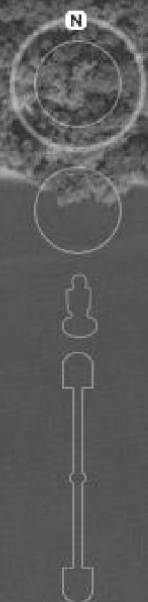
REVISED -
REVISED -
REVISED -
REVISED -

STATE OF ILLINOIS
DEPARTMENT OF TRANSPORTATION

FIBER OPTIC CONDUIT AND CABLE PROJECT
I-74 /I-280 (FROM I-74 /I-80 INTERCHANGE TO MOLINE) CONTINUED

SCALE: SHEET NO. 19 OF 21 SHEETS STA. TO STA.

F.A.P. RTE.	SECTION	COUNTY	TOTAL SHEETS	SHEET NO.
VAR	D4 FIBER OPTIC 2013	HENRY/ROCK ISL	96	84
CONTRACT NO. 68B04				
ILLINOIS FED. AID PROJECT				



SCHEDULE OF QUANTITIES		
ITS FIBER (I-74/I-280 INTERCHANGE TO MOLINE) - SHEET 20		
UNDERGROUND CONDUIT, MULTI-DUCT, 7-16MM MICRODUCTS	FOOT	2584.0
FIBER OPTIC CABLE 96 FIBERS, SINGLE MODE	FOOT	2584.0

Imagery Date: 9/12/2011 1993

41°27'15.16" N 90°28'42.62" W elev 571 ft

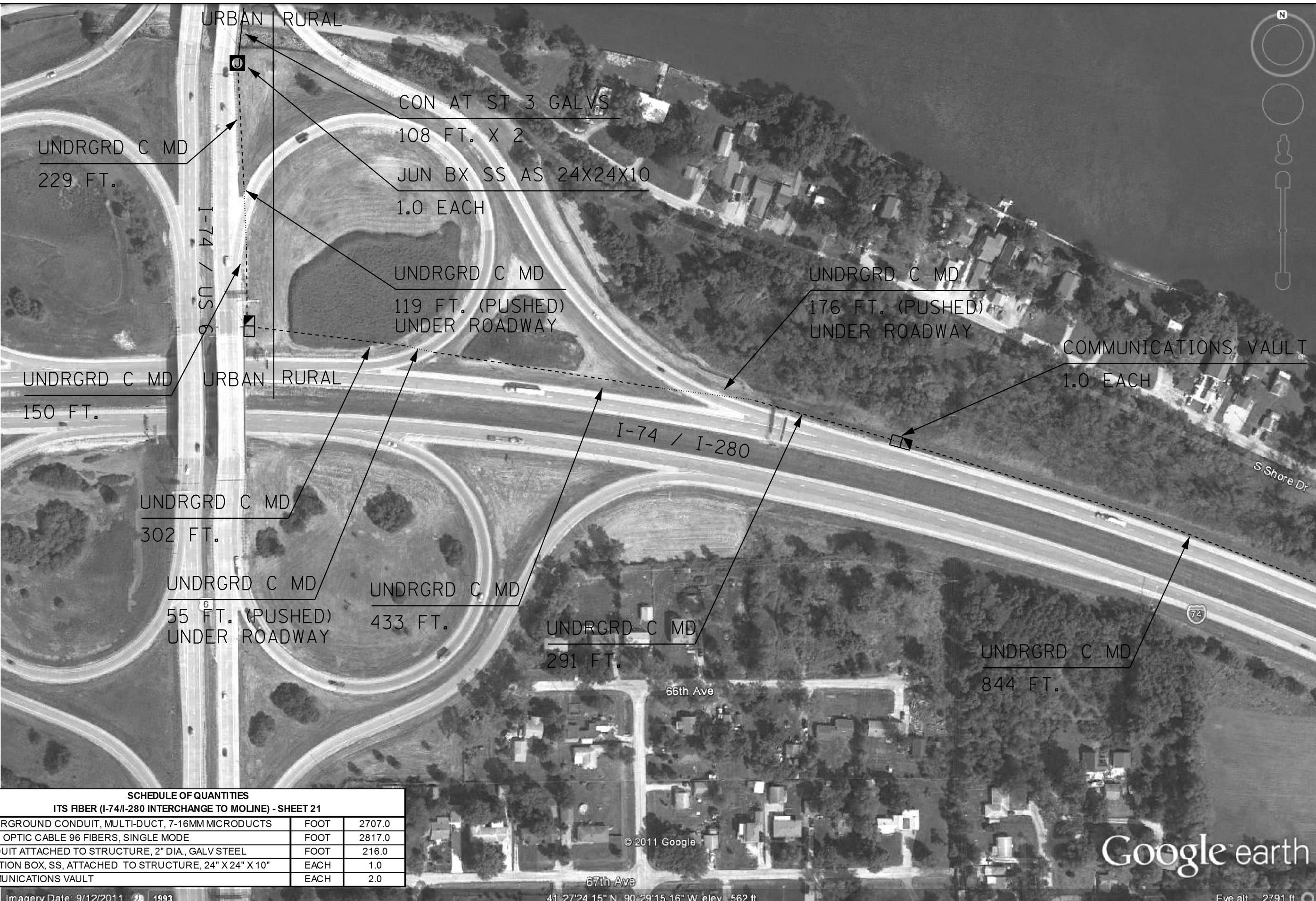
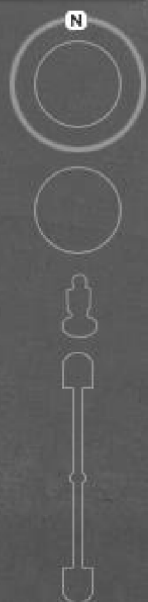
Eye alt 2791 ft

FILE NAME =	USER NAME = keithbr	DESIGNED =	REVISED =
cr:\notes\68b04 fiber plans\68b04\68B04	Woodhull to Moline (I-95) - Final 4-30-12.dgn	DRAWN =	REVISED =
	PLOT SCALE = 171.6216" / in.	CHECKED =	REVISED =
	PLOT DATE = 5/1/2012	DATE =	REVISED =

STATE OF ILLINOIS
DEPARTMENT OF TRANSPORTATION

FIBER OPTIC CONDUIT AND CABLE PROJECT
I-74 / I-280 (FROM I-74 / I-80 INTERCHANGE TO MOLINE) CONTINUED
SCALE: SHEET NO. 20 OF 21 SHEETS STA. TO STA.

F.A.P. RTE.	SECTION	COUNTY	TOTAL SHEETS	SHEET NO.
VAR	D4 FIBER OPTIC 2013	HENRY/ROCK ISL	96	85
CONTRACT NO. 68B04				
ILLINOIS FED. AID PROJECT				



SCHEDULE OF QUANTITIES		
ITS FIBER (I-74/I-280 INTERCHANGE TO MOLINE) - SHEET 21		
UNDERGROUND CONDUIT, MULTI-DUCT, 7-16MM MICRODUCTS	FOOT	2707.0
FIBER OPTIC CABLE 96 FIBERS, SINGLE MODE	FOOT	2817.0
CONDUIT ATTACHED TO STRUCTURE, 2" DIA., GALV STEEL	FOOT	216.0
JUNCTION BOX, SS, ATTACHED TO STRUCTURE, 24" X 24" X 10"	EACH	1.0
COMMUNICATIONS VAULT	EACH	2.0

Imagery Date: 9/12/2011 1993

FILE NAME =	USER NAME = keithbr	DESIGNED -	REVISED -
c:\notes\68b04 fiber plans\68b04\68b04	Woodhull to Moline (I-95) - Final 4-30-12.dgn	DRAWN -	REVISED -
	PLOT SCALE = 171.6216' / in.	CHECKED -	REVISED -
	PLOT DATE = 5/1/2012	DATE -	REVISED -

STATE OF ILLINOIS
DEPARTMENT OF TRANSPORTATION

FIBER OPTIC CONDUIT AND CABLE PROJECT			
I-74 /I-280 (FROM I-74 /I-80 INTERCHANGE TO MOLINE) CONTINUED			
SCALE:	SHEET NO. 21 OF 21 SHEETS	STA.	TO STA.

F.A.P. RTE.	SECTION	COUNTY	TOTAL SHEETS	SHEET NO.
VAR	D4 FIBER OPTIC 2013	HENRY/ROCK ISL	96	86
CONTRACT NO. 68B04				
ILLINOIS FED. AID PROJECT				



SCHEDULE OF QUANTITIES		
ITS FIBER (I-74 / IL 6 INTERCHANGE TO MOLINE) - SHEET 1		
UNDERGROUND CONDUIT, MULTI-DUCT, 7-16MM MICRODUCTS	FOOT	1731.0
FIBER OPTIC CABLE 96 FIBERS, SINGLE MODE	FOOT	1761.0
CONDUIT ATTACHED TO STRUCTURE, 2" DIA., GALV STEEL	FOOT	1688.0
JUNCTION BOX, SS, ATTACHED TO STRUCTURE, 24" X 24" X 10"	EACH	3.0

52nd Ave

31st St

I-74 / US 6

UNDRGRD C MD
887 FT

Kiwanis Trail

Frontage Rd

N Shore Dr

JUN BX SS AS 24X24X10
1.0 EACH.

CON AT ST 3 GALVS
706 FT. X 2

JUN BX SS AS 24X24X10
1.0 EACH.

ROCK RIVER

CON AT ST 3 GALVS
84 FT. X 2

CON AT ST 3 GALVS
54 FT. X 2

Google earth

Imagery Date: 9/12/2011 1993

41°27'37.16"N 90°29'41.85"W elev 551 ft

Eye alt 2791 ft

FILE NAME =	USER NAME = keithbr	DESIGNED -	REVISED -
cr:\notes\68b04 fiber plans\68b04\68b04	- Woodhull to Moline (1-95) - Final 4-30-12.dgn	DRAWN -	REVISED -
	PLOT SCALE = 171.6216' / in.	CHECKED -	REVISED -
	PLOT DATE = 5/1/2012	DATE -	REVISED -

STATE OF ILLINOIS
DEPARTMENT OF TRANSPORTATION

FIBER OPTIC CONDUIT AND CABLE PROJECT
I-74 /US 6 (FROM I-74 /US 6 INTERCHANGE TO MOLINE)

SCALE: SHEET NO. 1 OF 8 SHEETS STA. TO STA.

F.A.P. RTE.	SECTION	COUNTY	TOTAL SHEETS	SHEET NO.
VAR	D4 FIBER OPTIC 2013	HENRY/ROCK ISL	96	87
CONTRACT NO. 68B04				
ILLINOIS FED. AID PROJECT				



UNDRGRD C MD
300 FT.

UNDRGRD C MD
110 FT. (PUSHED)
UNDER ROADWAY

UNDRGRD C MD
1223 FT.

27TH STREET

I-74 / US 6

48TH STREET

48th Ave

45th Ave

45th Avenue A

46th Ave

34th St

© 2011 Google

Google earth

41°27'53.17" N 90°29'41.75" W elev 580 ft

Eye alt 2791 ft

SCHEDULE OF QUANTITIES

ITS FIBER (I-74 / IL 6 INTERCHANGE TO MOLINE) - SHEET 2

UNDERGROUND CONDUIT, MULTI-DUCT, 7-16MM MICRODUCTS	FOOT	1632.0
FIBER OPTIC CABLE 96 FIBERS, SINGLE MODE	FOOT	1632.0

Imagery Date: 9/12/2011 1993

FILE NAME =	USER NAME = keithbr	DESIGNED =	REVISED =
cr:\notes\68b04 fiber plans\68b04\68B04	- Woodhull to Moline (1-95) - Final 4-30-12.dgn	DRAWN	REVISED
	PLOT SCALE = 171.6216" / in.	CHECKED =	REVISED =
	PLOT DATE = 5/1/2012	DATE =	REVISED =

STATE OF ILLINOIS
DEPARTMENT OF TRANSPORTATION

FIBER OPTIC CONDUIT AND CABLE PROJECT
I-74 /US 6 (FROM I-74 /US 6 INTERCHANGE TO MOLINE) CONTINUED

SCALE: SHEET NO. 2 OF 8 SHEETS STA. TO STA.

F.A.P. RTE.	SECTION	COUNTY	TOTAL SHEETS	SHEET NO.
VAR	D4 FIBER OPTIC 2013	HENRY/ROCK ISL	96	88
		CONTRACT NO. 68B04		
		ILLINOIS FED. AID PROJECT		



SCHEDULE OF QUANTITIES		
ITS FIBER (I-74 / IL 6 INTERCHANGE TO MOLINE) - SHEET 3		
UNDERGROUND CONDUIT, MULTI-DUCT, 7-16MM MICRODUCTS	FOOT	1597.0
FIBER OPTIC CABLE 96 FIBERS, SINGLE MODE	FOOT	1647.0
COMMUNICATIONS VAULT	EACH	1.0



FILE NAME = c:\notes\68b04 fiber plans\68b04\68B04	USER NAME = keithbr	DESIGNED -	REVISED -	STATE OF ILLINOIS DEPARTMENT OF TRANSPORTATION	FIBER OPTIC CONDUIT AND CABLE PROJECT I-74 /US 6 (FROM I-74 /US 6 INTERCHANGE TO MOLINE)			F.A.P. R.T.E.	SECTION	COUNTY	TOTAL SHEETS	SHEET NO.
	- Woodhull to Moline (1-95) - Final 4-30-12.dgn	DRAWN -	REVISED -					VAR	D4 FIBER OPTIC 2013	HENRY/ROCK ISL	96	89
	PLOT SCALE = 171.6216 ' / in.	CHECKED -	REVISED -					CONTRACT NO. 68B04				
	PLOT DATE = 5/1/2012	DATE -	REVISED -					ILLINOIS FED. AID PROJECT				
	SCALE:							SHEET NO. 3 OF 8 SHEETS		STA.		TO STA.



A COMBINATION OF PUSHED AND TRENCHED CONDUIT WILL BE REQUIRED IN THIS AREA OF ROUGH TERRAIN AND TREE GROVES. THE CONTRACTOR SHALL VERIFY ALL FIELD CONDITIONS PRIOR TO BIDDING.

UNDRGRD C MD
1102 FT.

COMMUNICATIONS VAULT
1.0 EACH

UNDRGRD C MD
532 FT. (PUSHED)
ALONG STEEP INCLINE

SCHEDULE OF QUANTITIES		
ITS FIBER (I-74 / IL 6 INTERCHANGE TO MOLINE) - SHEET 4		
UNDERGROUND CONDUIT, MULTI-DUCT, 7-16MM MICRODUCTS	FOOT	1634.0
FIBER OPTIC CABLE 96 FIBERS, SINGLE MODE	FOOT	1684.0
COMMUNICATIONS VAULT	EACH	1.0

Imagery Date: 9/12/2011 1993

41°28'25.55" N 90°29'39.82" W elev 596 ft

Eye alt 2791 ft

FILE NAME =	USER NAME = howalder	DESIGNED -	REVISED -
S:\GEN\DRAW\ITS Fiber Project\68B04\68B04 - Woodhull to Moline (I-95) - Final 4-30-12.dwg		DRAWN -	REVISED -
	PLOT SCALE = 171.6216" / in.	CHECKED -	REVISED -
	PLOT DATE = 5/23/2012	DATE -	REVISED -

STATE OF ILLINOIS
DEPARTMENT OF TRANSPORTATION

FIBER OPTIC CONDUIT AND CABLE PROJECT
I-74 /US 6 (FROM I-74 /US 6 INTERCHANGE TO MOLINE)

SCALE: SHEET NO. 4 OF 8 SHEETS STA. TO STA.

F.A.P. RTE.	SECTION	COUNTY	TOTAL SHEETS	SHEET NO.
VAR	D4 FIBER OPTIC 2013	HENRY/ROCK ISL	96	90
CONTRACT NO. 68B04				
ILLINOIS FED. AID PROJECT				



UNDRGRD C MD
1764 FT.

Imagery Date: 9/12/2011 1993

41°28'42.02" N 90°29'38.99" W elev 643 ft

Google™ earth

Eye alt 2791 ft

FILE NAME =	USER NAME = howelder	DESIGNED -	REVISED -	<div>STATE OF ILLINOIS DEPARTMENT OF TRANSPORTATION</div>	<div>FIBER OPTIC CONDUIT AND CABLE PROJECT I-74 /US 6 (FROM I-74 /US 6 INTERCHANGE TO MOLINE)</div>	F.A.P. RTE.	SECTION	COUNTY	TOTAL SHEETS	SHEET NO.
S:\GEN\DRAWING\ITS Fiber Project\68804\68804 - Woodhull to Moline (I-95) - Final 4-30-12.dwg	DRAWN -	REVISED -	VAR			D4 FIBER OPTIC 2013	HENRY/ROCK ISL	96	91	
PLOT SCALE = 171.6216 1' = in.	CHECKED -	REVISED -	CONTRACT NO. 68804							
PLOT DATE = 5/23/2012	DATE -	REVISED -	ILLINOIS FED. AID PROJECT							
				SCALE:	SHEET NO. 5 OF 8 SHEETS	STA.	TO STA.			



SCHEDULE OF QUANTITIES		
ITS FIBER (I-74 / IL 6 INTERCHANGE TO MOLINE) - SHEET 6		
UNDERGROUND CONDUIT, MULTI-DUCT, 7-16MM MICRODUCTS	FOOT	2034.0
FIBER OPTIC CABLE 96 FIBERS, SINGLE MODE	FOOT	2084.0
COMMUNICATIONS VAULT	EACH	1.0

Imagery Date: 9/12/2011 1993

41°28'57.83" N 90°29'47.22" W elev 664 ft

Eye alt 2791 ft

FILE NAME =	USER NAME = howalder	DESIGNED -	REVISED -
S:\GEN\DRAWING\ITS Fiber Project\68B04\68B04 - Woodhull to Moline (I-95) - Final 4-30-12.dwg		DRAWN -	REVISED -
	PLOT SCALE = 171.6216" / in.	CHECKED -	REVISED -
	PLOT DATE = 5/23/2012	DATE -	REVISED -

STATE OF ILLINOIS
DEPARTMENT OF TRANSPORTATION

FIBER OPTIC CONDUIT AND CABLE PROJECT
I-74 /US 6 (FROM I-74 /US 6 INTERCHANGE TO MOLINE)

SCALE: SHEET NO. 6 OF 8 SHEETS STA. TO STA.

F.A.P. RTE.	SECTION	COUNTY	TOTAL SHEETS	SHEET NO.
VAR	D4 FIBER OPTIC 2013	HENRY/ROCK ISL	96	92
		CONTRACT NO. 68B04		
		ILLINOIS FED. AID PROJECT		



Google earth

41°29'13.16"N 90°30'03.07"W elev 679 ft

Eye alt 2791 ft

SCHEDULE OF QUANTITIES		
ITS FIBER (I-74 / IL 6 INTERCHANGE TO MOLINE) - SHEET 7		
UNDERGROUND CONDUIT, MULTI-DUCT, 7-16MM MICRODUCTS	FOOT	1978.0
FIBER OPTIC CABLE 96 FIBERS, SINGLE MODE	FOOT	2028.0

Imagery Date: 9/12/2011 1994

FILE NAME =	USER NAME = keithbr	DESIGNED -	REVISED -
cr:\notes\68b04 fiber plans\68b04\68B04	- Woodhull to Moline (1-95) - Final 4-30-12.dgn	DRAWN -	REVISED -
	PLOT SCALE = 171.6216" / in.	CHECKED -	REVISED -
	PLOT DATE = 5/1/2012	DATE -	REVISED -

STATE OF ILLINOIS
DEPARTMENT OF TRANSPORTATION

FIBER OPTIC CONDUIT AND CABLE PROJECT
I-74 /US 6 (FROM I-74 /US 6 INTERCHANGE TO MOLINE)

SCALE: SHEET NO. 7 OF 8 SHEETS STA. TO STA.

F.A.P. RTE.	SECTION	COUNTY	TOTAL SHEETS	SHEET NO.
VAR	D4 FIBER OPTIC 2013	HENRY/ROCK ISL	96	93
CONTRACT NO. 68B04				
ILLINOIS FED. AID PROJECT				



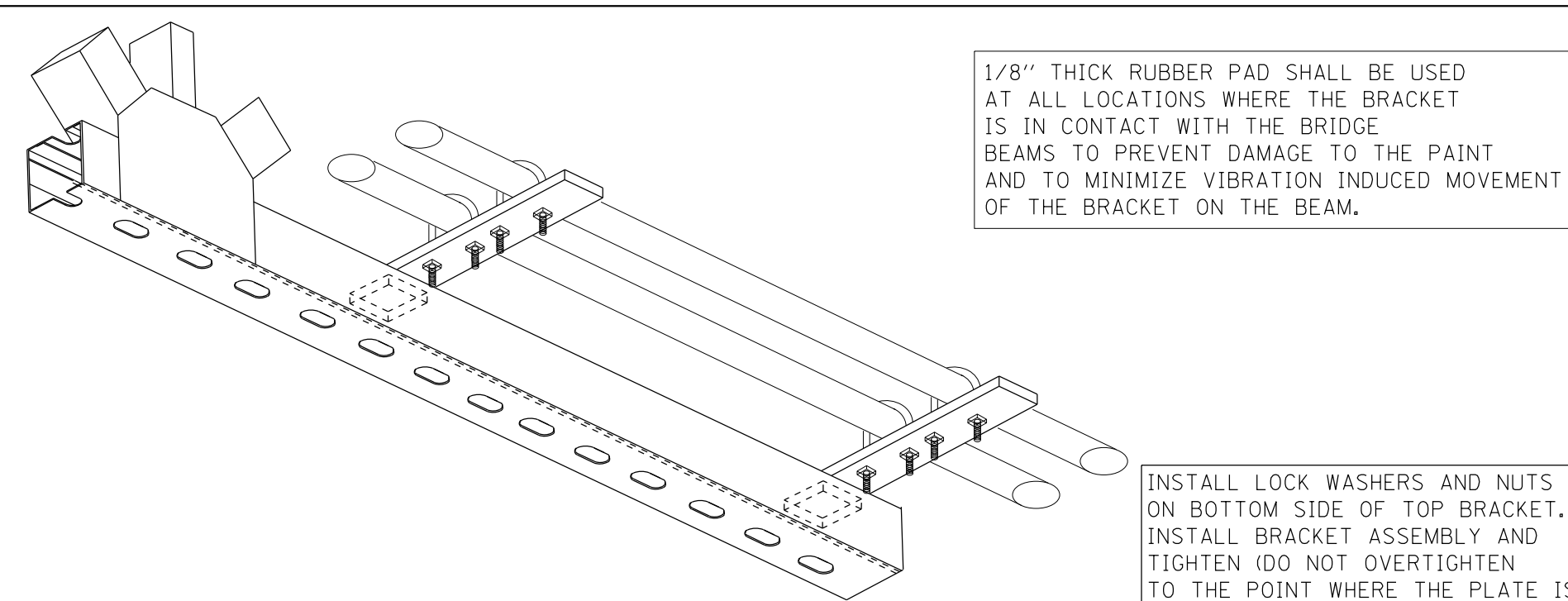
SCHEDULE OF QUANTITIES		
ITS FIBER (I-74 / IL 6 INTERCHANGE TO MOLINE) - SHEET 8		
UNDERGROUND CONDUIT, MULTI-DUCT, 7-16MM MICRODUCTS	FOOT	495.0
FIBER OPTIC CABLE 96 FIBERS, SINGLE MODE	FOOT	545.0
COMMUNICATIONS VAULT	EACH	1.0

FILE NAME =	USER NAME = keithbr	DESIGNED -	REVISED -
c:\notes\68b04 fiber plans\68b04\68B04	Woodhull to Moline (I-95) - Final 4-30-12.dgn	DRAWN -	REVISED -
	PLOT SCALE = 171.6216' / in.	CHECKED -	REVISED -
	PLOT DATE = 5/1/2012	DATE -	REVISED -

STATE OF ILLINOIS
DEPARTMENT OF TRANSPORTATION

FIBER OPTIC CONDUIT AND CABLE PROJECT			
I-74 /US 6 (FROM I-74 /US 6 INTERCHANGE TO MOLINE)			
SCALE:	SHEET NO. 8 OF 8 SHEETS	STA.	TO STA.

F.A.P. RTE.	SECTION	COUNTY	TOTAL SHEETS	SHEET NO.
VAR	D4 FIBER OPTIC 2013	HENRY/ROCK ISL	96	94
CONTRACT NO. 68B04				
ILLINOIS FED. AID PROJECT				



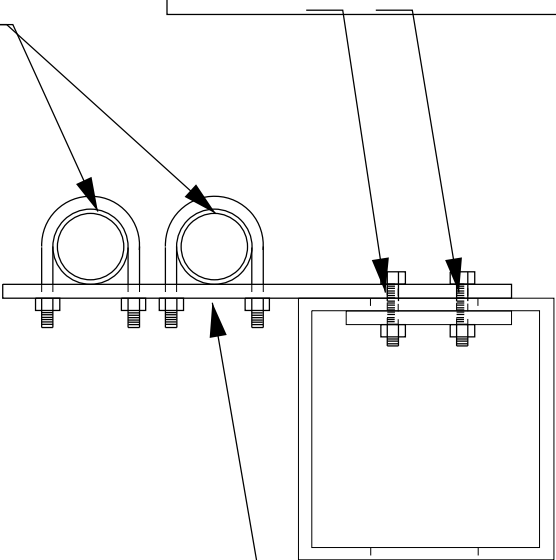
1/8" THICK RUBBER PAD SHALL BE USED AT ALL LOCATIONS WHERE THE BRACKET IS IN CONTACT WITH THE BRIDGE BEAMS TO PREVENT DAMAGE TO THE PAINT AND TO MINIMIZE VIBRATION INDUCED MOVEMENT OF THE BRACKET ON THE BEAM.

INSTALL LOCK WASHERS AND NUTS ON BOTTOM SIDE OF TOP BRACKET. INSTALL BRACKET ASSEMBLY AND TIGHTEN (DO NOT OVERTIGHTEN TO THE POINT WHERE THE PLATE IS BOWED AND THE BRACKET IS NOT MAKING GOOD CONTACT WITH THE SURFACE OF THE BRIDGE BEAM).

3" GALVANIZED STEEL CONDUIT

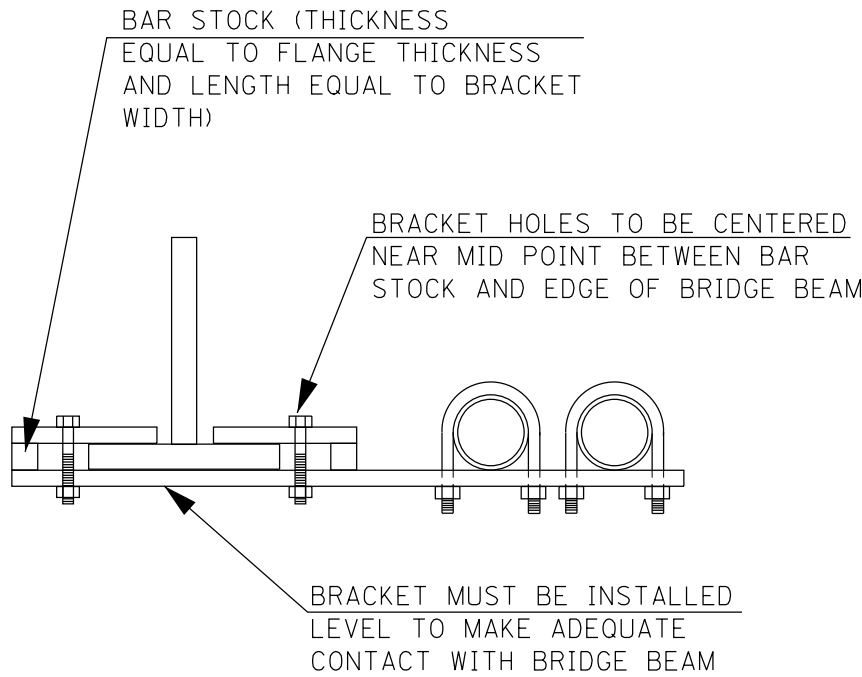
1/ 2" STAINLESS STEEL BOLTS TYP.

8 FT. MAX SPACING BETWEEN BRACKETS TYP. (CENTER TO CENTER)



3.00" X .375 GALVANIZED STEEL BAR LENGTH AS REQUIRED

CONDUIT ATTACHMENT ON SUPERSTRUCTURE BOX BEAM



NOTES: CONDUIT ATTACHMENT ON APPROACH SPANS

1. THE CONTRACTOR SHALL VERIFY AND FINALIZE ALL BRACKET DIMENSIONS. THE BRACKETS SHALL BE COMPATIBLE WITH EXISTING FIELD CONDITIONS.
2. THE CONTRACTOR SHALL BE SOLELY RESPONSIBLE FOR ENSURING THAT THE BRACKET DIMENSIONS ARE CORRECT PRIOR TO RELEASING THE BRACKETS FOR PRODUCTION.
3. THE CONTRACTOR SHALL CONSTRUCT PROTOTYPE BRACKETS AND INSTALL THEM ON THE STRUCTURE TO VERIFY FIT PRIOR TO RELEASE.
4. ALL HARDWARE SHALL BE 1/2" DIAMETER STAINLESS STEEL (GRADE 18-8/304).
5. THE CONTRACTOR SHALL UTILIZE LOCK WASHERS WITH ALL NUTS.
6. THE CONTRACTOR SHALL UTILIZE THREAD LOCKER ON ALL THREADED CONNECTIONS.
7. ALL BRACKET COMPONENTS SHALL BE FULLY HOT DIPPED GALVANIZED IN ACCORDANCE WITH THE STANDARD SPECIFICATIONS (AASHTO M 111).
8. THERE WILL BE NO ADDITIONAL COMPENSATION FOR MINOR ADJUSTMENTS TO THE CONDUIT MOUNTING BRACKETS THAT ARE REQUIRED FOR COMPATIBILITY WITH EXISTING FIELD CONDITIONS.
9. THE CONTRACTOR SHALL SUBMIT A COMPLETE PACKAGE (INCLUDING CONDUIT BRACKETS, HARDWARE, ATTACHMENT POINTS, ATTACHMENT METHODS, ETC.) TO THE DEPARTMENT FOR REVIEW AND APPROVAL PRIOR TO COMMENCING WORK.

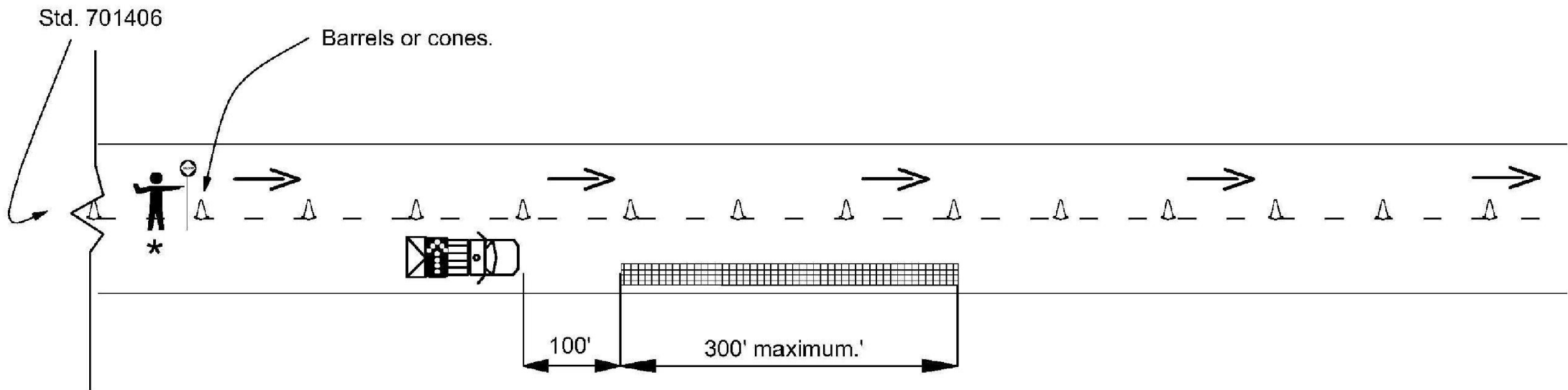
FILE NAME = c:\notes\68b04 fiber plans\68b04\68B04	USER NAME = keithbr	DESIGNED -	REVISED -	STATE OF ILLINOIS DEPARTMENT OF TRANSPORTATION	BRIDGE CONDUIT ATTACHMENT BRACKET DETAILS					F.A.P. RTE.	SECTION	COUNTY	TOTAL SHEETS	SHEET NO.
	Woodhull to Moline (1-95) - Final 4-30-12.dgn	DRAWN -	REVISED -							VAR	D4 FIBER OPTIC 2013	HENRY/ROCK ISL	96	95
	PLOT SCALE = 171.6216 ' / in.	CHECKED -	REVISED -		CONTRACT NO. 68B04									
	PLOT DATE = 5/1/2012	DATE -	REVISED -		ILLINOIS FED. AID PROJECT									
					SCALE:		STA.	TO STA.						

Legend

Safety Zone

Cone

Traffic Control Detail



NOTES:

This detail shall be used when no means of escape, from an errant vehicle, exists. This includes work areas on the bridge and when there is a concrete wall on the shoulder or median of the closed lane.

Multiple attenuators may be necessary when the work area extends beyond 400' at one location or when additional crews working at an alternate location.

TIME RESTRICTIONS:

Lane reductions shall only be allowed from 8: 30 a.m. to 3:30 p.m. Monday thru Friday. There shall be no time restrictions on weekends.

★ = Shall not be required when workers are along shoulder. Vehicles and equipment may be in the closed lane but the predominant work must be near the shoulder to not warrant a flagger.

= Attenuator truck with arrow board.

= work area.

THE COST OF ATTENUATOR TRUCK SHALL BE INCLUDED IN THE BID PRICE FOR TRAFFIC CONTROL AND PROTECTION, STANDARDS 701406 AND 701601.