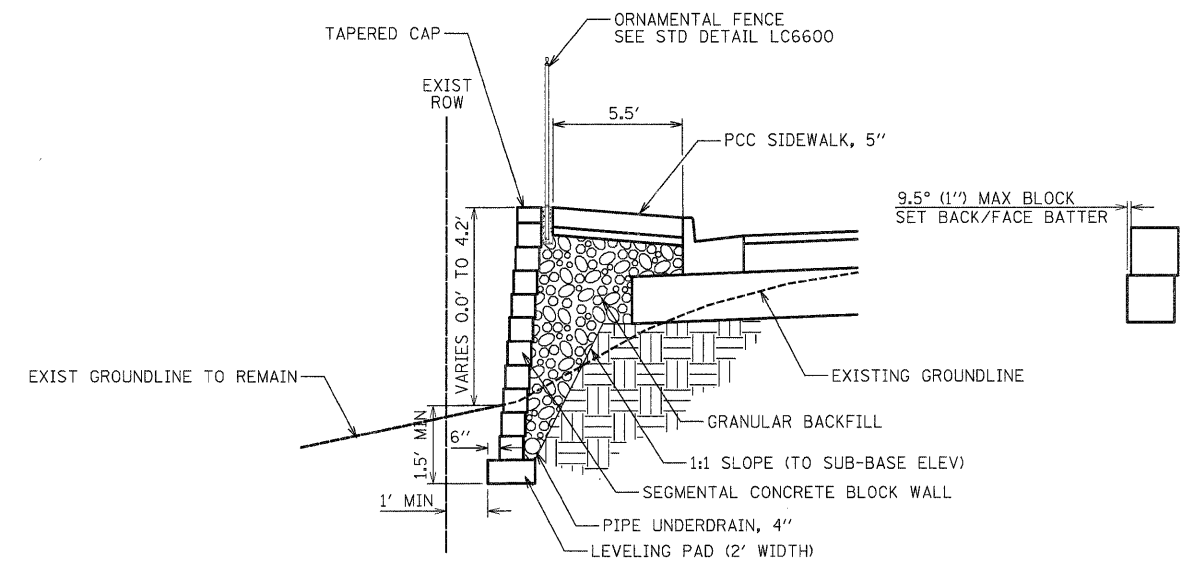
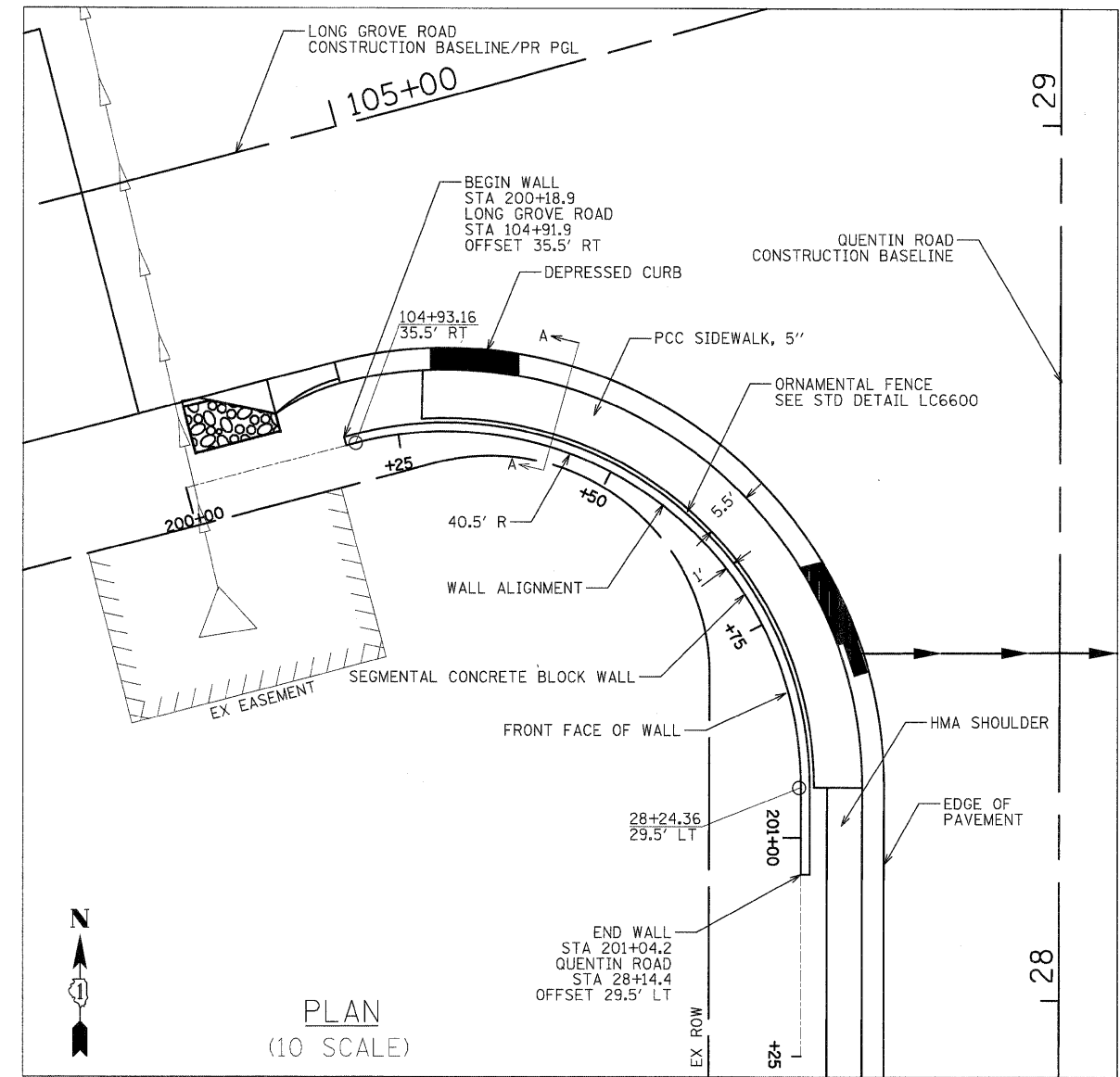


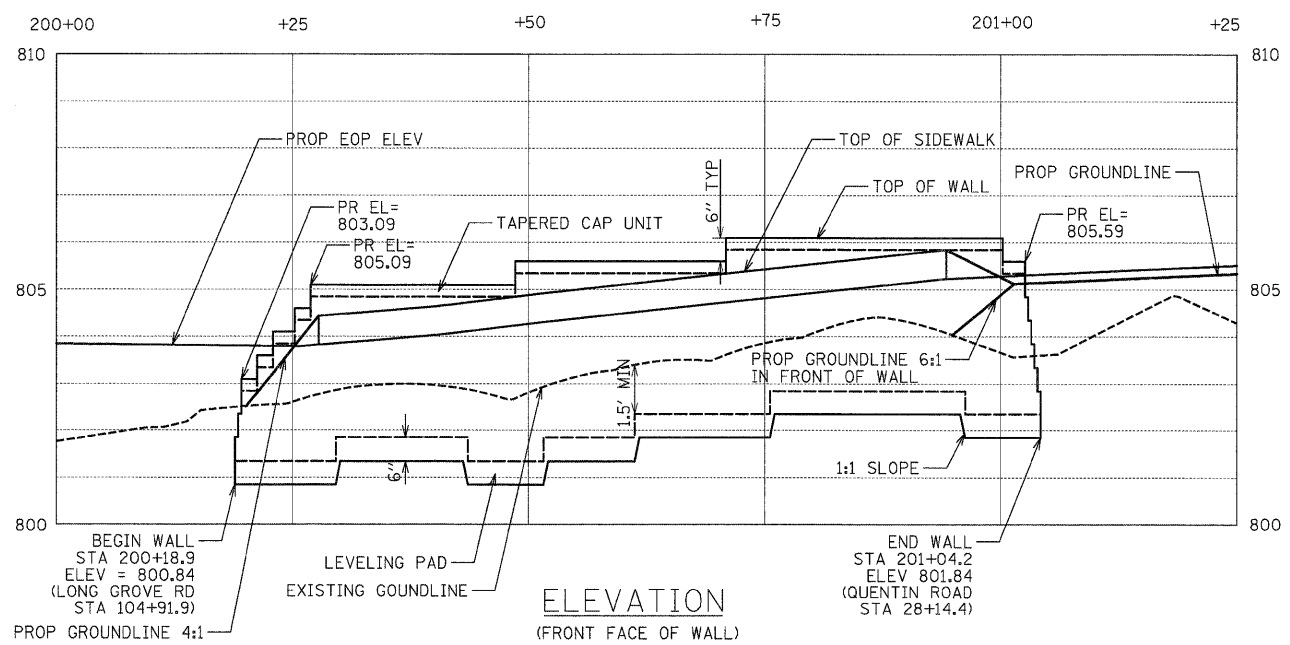
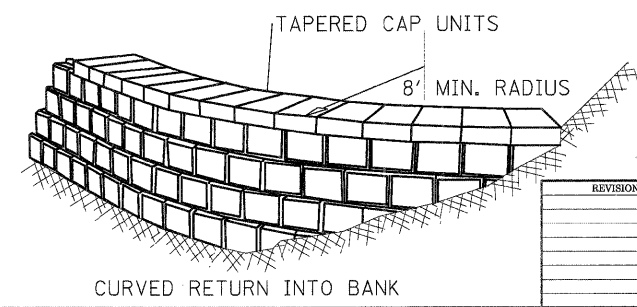
DATE _____
 BY _____
 SURVEYED _____
 SURVEY _____
 NOTE BOOK _____
 TEMPLATE _____
 AREAS _____
 AREAS CHECKED _____

DATE _____
 BY _____
 SURVEYED _____
 SURVEY _____
 NOTE BOOK _____
 TEMPLATE _____
 AREAS _____
 AREAS CHECKED _____



- BLOCK FACING IS SPLIT FACE
- CAP UNITS TO BE APPLIED WITH ADHESIVE. APPLICATION RATE IS ONE 10.5 OZ TUBE PER 18 FEET OF CAP LENGTH.
- PLACEMENT METHOD IS BY HAND
- STACKING ALIGNMENT MAY BE EITHER BATTERED OR VERTICAL
- MINIMUM FACE RADIUS IN CURVE = 8'
- DESIGN NOTE: MAX HEIGHT GRAVITY ONLY = 5 FEET
- RETAINING WALL BLOCKS MUST BE CERTIFIED BY IDOT'S QUALITY ASSURANCE/QUALITY CONTROL PROGRAM

SEGMENTAL CONCRETE BLOCK DETAILS						
		FACE WIDTH	BACK WIDTH	HEIGHT	DEPTH	WEIGHT
	STANDARD UNIT	8"	8"	6"	12"	45 LBS
	TAPERED UNIT	8"	6 7/8"	6"	12"	43 LBS
	TAPERED CAP	8"	7"	3"	14"	22 LBS
	RECTANGULAR CAP	24"	24"	3"	12"	68 LBS



CIVILTECH
 450 E Devon Ave, Suite 300
 Itasca, Illinois 60143
 Tel: 630.773.3900 Fax: 630.773.3975
 www.civiltechinc.com

DESIGNED - JRR
 DRAWN - JRR
 CHECKED - RTM
 DATE - 10/24/2011

REVISED -
 REVISED -
 REVISED -
 REVISED -

STATE OF ILLINOIS
DEPARTMENT OF TRANSPORTATION

NO SCALE

MODULAR RETAINING SYSTEM DETAILS

SHEET NO. 1 OF 1 SHEETS

REVISIONS	DATE

Lake County
 Division of Transportation
 APPROVED BY: M. G. ZEMAITIS
 DATE: APRIL 1, 2007

SEGMENTAL CONCRETE BLOCK WALL

LC2101

F.A.U. RTE.	SECTION	COUNTY	TOTAL SHEETS	SHEET NO.
364	02-00051-08-WR	LAKE	188	132
CONTRACT NO. 63649				
FED. ROAD DIST. NO. 1 ILLINOIS FED. AID PROJECT				