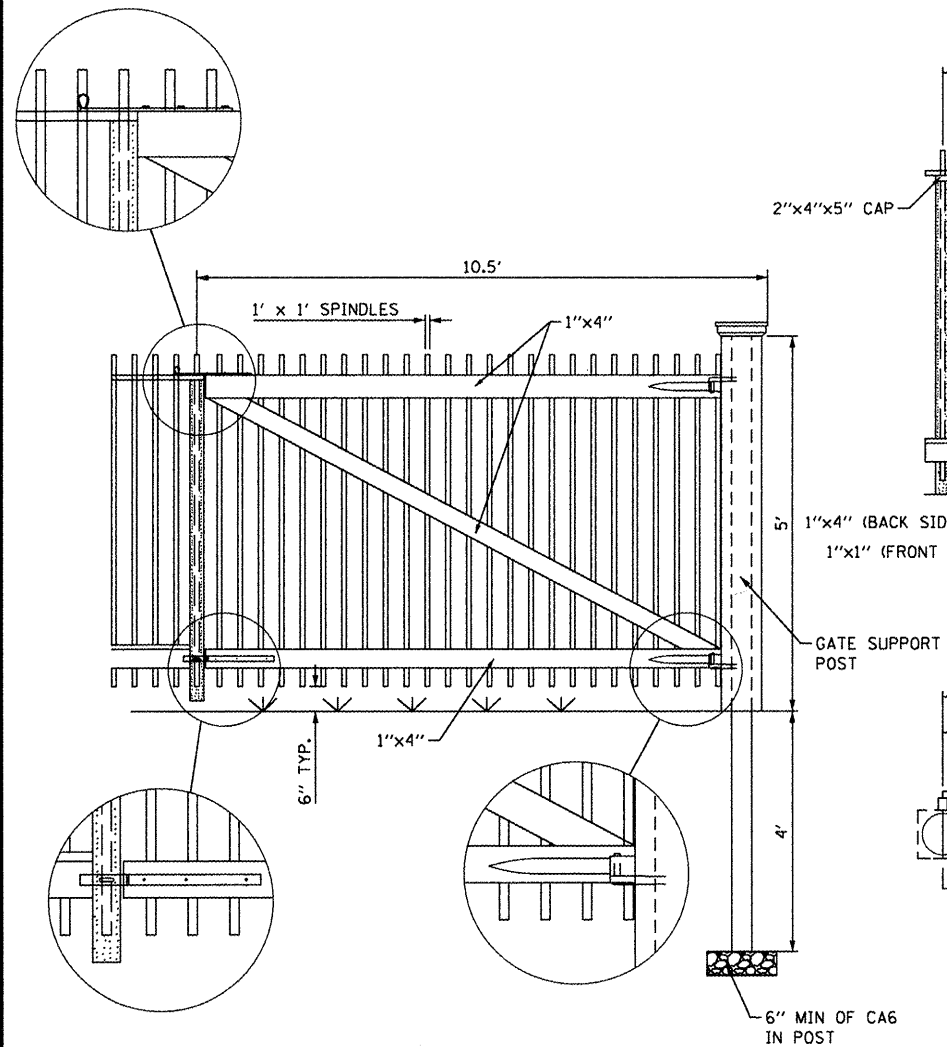
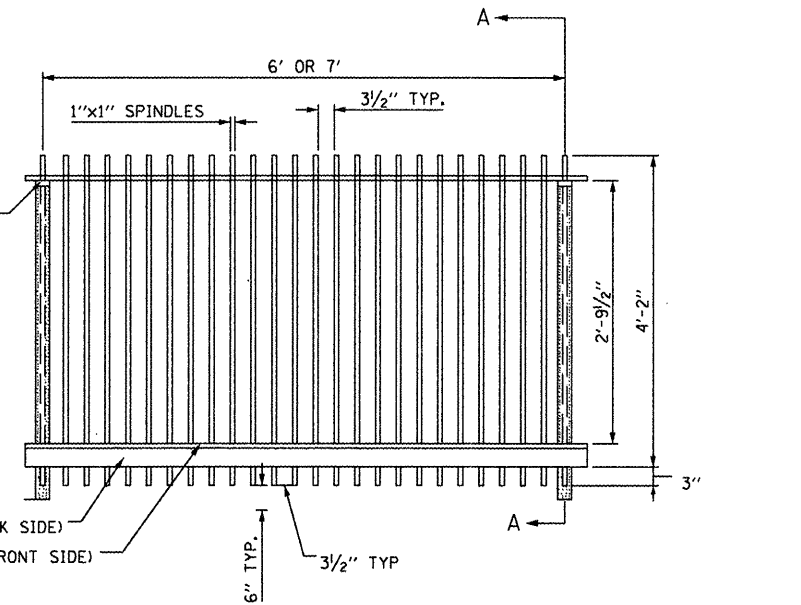


ALL EXISTING HINGES, GATE CLOSERS, AND HARDWARE SHALL BE CAREFULLY REMOVED AND PROVIDED TO THE SITE MANAGER. REPLACEMENT OF THESE ITEMS SHALL MATCH THE EXISTING CONFIGURATION AND BE MANUFACTURED WITH A MATERIAL COMPATIBLE WITH THE TREATED WOOD.

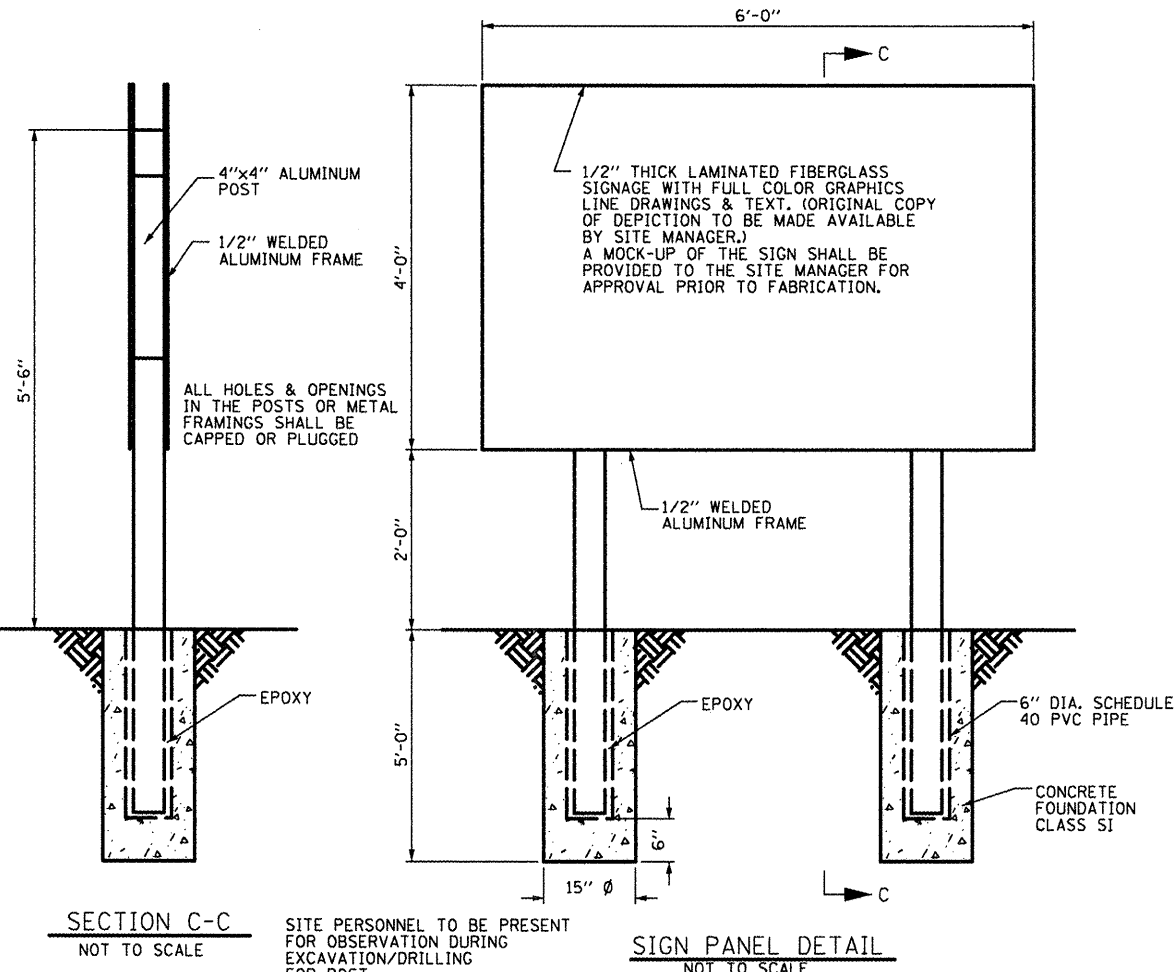
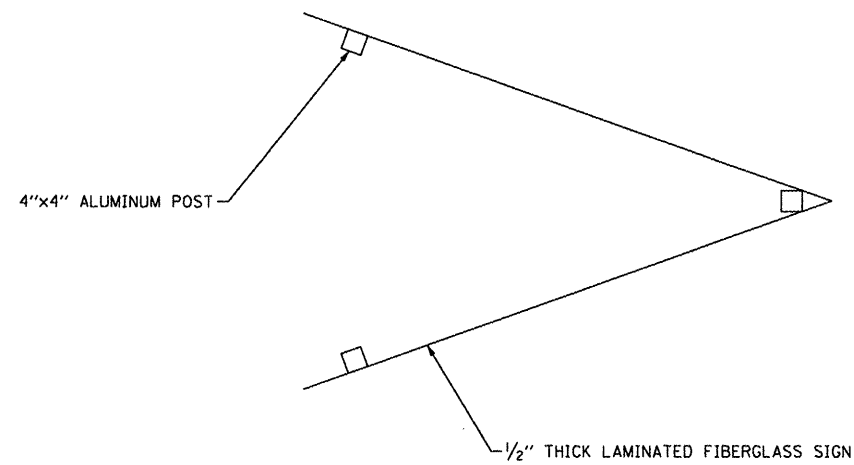
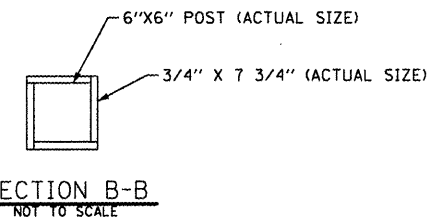
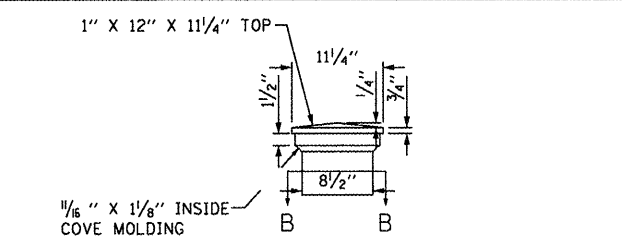
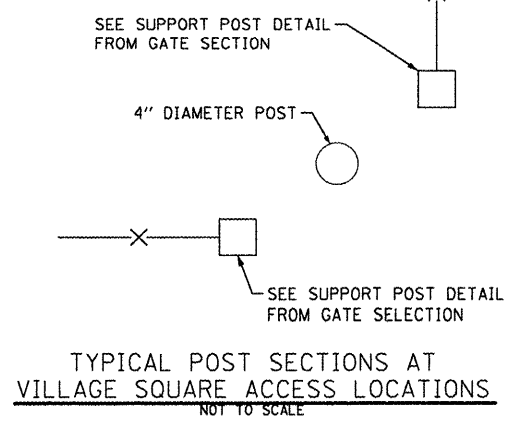
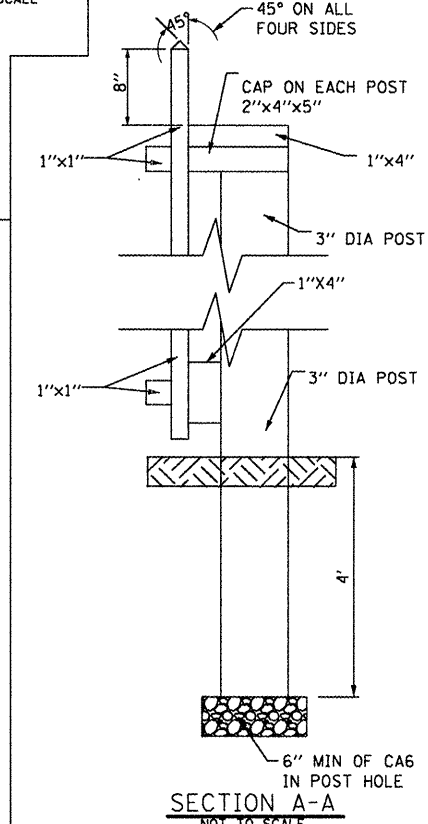
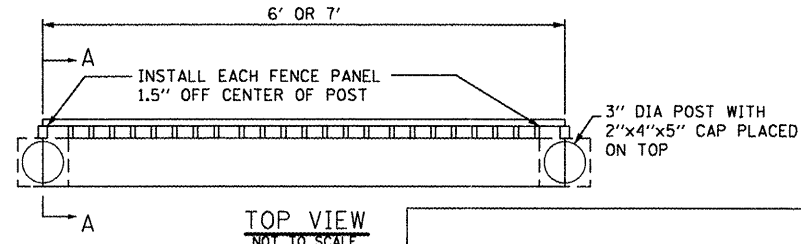
NOTE: LUMBER SIZES ON THIS SHEET ARE ACTUAL SIZES UNLESS NOTED DIFFERENTLY.



TYPICAL GATE SECTION
NOT TO SCALE



TYPICAL FENCE PANEL SECTION
NOT TO SCALE



SITE PERSONNEL TO BE PRESENT FOR OBSERVATION DURING EXCAVATION/DRILLING FOR POST

FILE NAME =	USER NAME = #USER#	DESIGNED - R.H.D.	REVISED -
#FILE#		DRAWN - S.J.L.	REVISED -
	PLOT SCALE = #SCALE#	CHECKED -	REVISED -
	PLOT DATE = #DATE#	DATE - 3/26/12	REVISED -

STATE OF ILLINOIS
DEPARTMENT OF TRANSPORTATION

DETAILS
BISHOP HILL STATE HISTORIC SITE

SCALE: SHEET NO. 9 OF 9 SHEETS STA. TO STA.

SECTION	COUNTY	TOTAL SHEETS	SHEET NO.
VARIOUS	HENRY	9	9
CONTRACT NO. 46224			
JOB NO. 200-083-J VASCONECLES ENGINEERING CORP. DESIGN FIRM REGISTRATION NUMBER 184-002107			