

INDEX OF SHEETS

- 1 COVER SHEET AND INDEX OF SHEETS
- 2 GENERAL NOTES AND HIGHWAY STANDARDS
- 3 SUMMARY OF QUANTITIES
- 4-5 TYPICAL SECTIONS
- 6-7 ROADWAY PLAN
- 8-11 SUGGESTED TRAFFIC CONTROL PLAN
- 12-13 PAVEMENT MARKING PLAN
- 14-16 PROJECT DETAILS
- 17 BD-08 DETAILS FOR FRAMES AND LIDS ADJUSTMENT WITH MILLING
- 18 BD-22 PAVEMENT PATCHING FOR HMA SURFACED PAVEMENT
- 19 BD-32 BUTT JOINT AND HMA TAPER DETAILS
- 20 TC-10 TRAFFIC CONTROL AND PROTECTION FOR SIDE ROADS, INTERSECTIONS, AND DRIVEWAYS
- 21 TC-13 DISTRICT ONE TYPICAL PAVEMENT MARKINGS
- 22 TC-14 TRAFFIC CONTROL AND PROTECTION AT TURN BAYS (TO REMAIN OPEN TO TRAFFIC)
- 23 TC-16 PAVEMENT MARKING LETTERS AND SYMBOLS FOR TRAFFIC STAGING
- 24 TC-22 ARTERIAL ROAD INFORMATION SIGN
- 25 TC-26 DRIVEWAY ENTRANCE SIGNING
- 26 TS-07 DISTRICT 1 - DETECTOR LOOP INSTALLATION DETAILS FOR ROADWAY RESURFACING

FOR INDEX OF HIGHWAY STANDARDS, SEE SHEET NO. 2

TRAFFIC DATA

ADT:
ST. CHARLES ROAD 17,300 VPD (2008)

POSTED SPEED

30 MPH (EXISTING)
30 MPH (PROPOSED)

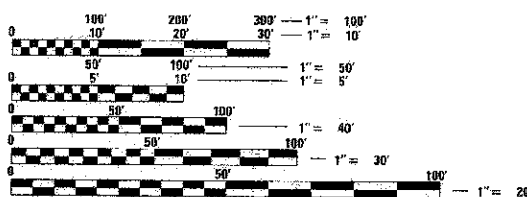
DESIGN SPEED

35 MPH (EXISTING)
35 MPH (PROPOSED)

FUNCTIONAL CLASSIFICATION

MINOR ARTERIAL - URBAN

PROJECT IS LOCATED IN
THE CITY OF ELMHURST



FULL SIZE PLANS HAVE BEEN PREPARED USING STANDARD ENGINEERING SCALES. REDUCED SIZED PLANS WILL NOT CONFORM TO STANDARD SCALES. IN MAKING MEASUREMENTS ON REDUCED PLANS, THE ABOVE SCALES MAY BE USED.

J.U.L.I.E.
JOINT UTILITY LOCATION INFORMATION FOR EXCAVATION
1-800-892-0123
OR 811

CONTRACT NO. 63833

STATE OF ILLINOIS DEPARTMENT OF TRANSPORTATION

DIVISION OF HIGHWAYS

PLANS FOR PROPOSED FEDERAL AID HIGHWAY

FAU ROUTE 1397 (ST CHARLES ROAD)
FAP 0344 (IL ROUTE 83) TO FAU 2672 (SPRING ROAD)

RESURFACING

SECTION 13-00181-00-RS

PROJECT M-4003(159)

CITY OF ELMHURST

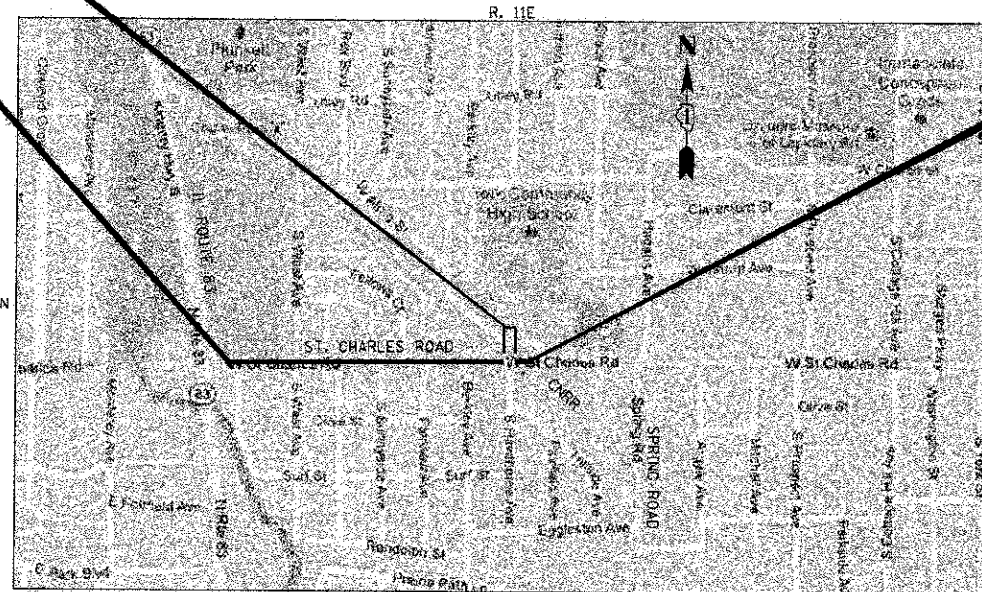
DUPAGE COUNTY

JOB NO. C-91-211-13

PROJECT OMISSION
STATION 126+02 TO
STATION 126+36

PROJECT BEGINS
STATION 104+00

PROJECT ENDS
STATION 127+08



YORK TOWNSHIP
SECTIONS 2, 3, 10, AND 11

CITY OF ELMHURST

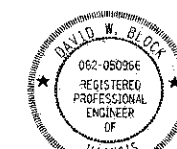
3RD P.M.

LOCATION MAP

NOT TO SCALE

PROJECT LENGTH (GROSS / NET)
2,308 FT (0.44 MILES) (GROSS)

OMISSION = 34 FT (0.01 MILES)
TOTAL PROJECT LENGTH = 2,274 FT (0.43 MILES) (NET)



DAVID W. BLOCK, P.E.
NO. 062-050966
EXP. DATE 11/30/13

F.A.U. RTE.	SECTION	COUNTY	TOTAL SHEETS	SHEET NO.
1397	13-00181-00-RS	DUPAGE	26	1

CONTRACT NO. 63833

26+1 = 27



LOCATION OF SECTION INDICATED THUS: —

STATE OF ILLINOIS DEPARTMENT OF TRANSPORTATION DIVISION OF HIGHWAYS

APPROVED 4-2-13 2013

Car Tibes
CITY OF ELMHURST, CITY ENGINEER

PASSED APRIL 9 2013

DISTRICT 1 ENGINEER OF LOCAL ROADS & STREETS

RELEASING FOR BID
BASED ON LIMITED
REVIEW

APRIL 10 2013

DEPUTY DIRECTOR OF HIGHWAYS, REGION 1 ENGINEER

PRINTED BY THE AUTHORITY
OF THE STATE OF ILLINOIS