

# INDEX OF SHEETS:

06-13-2025 LETTING ITEM 130

- 1 COVER SHEET
- 2 HIGHWAY STANDARDS, GENERAL NOTES, AND COMMITMENTS
- 3 SUMMARY OF QUANTITIES
- 4 SITE DEVELOPMENT PLAN
- 5 STRUCTURAL /PLUMBING - PLAN AND SECTION

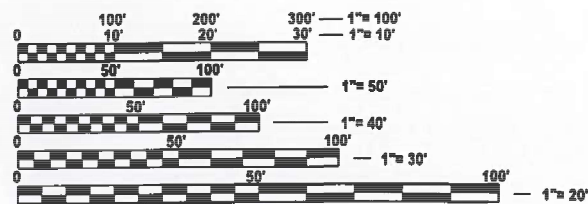
## STATE OF ILLINOIS DEPARTMENT OF TRANSPORTATION

# PROPOSED HIGHWAY PLANS

FAU 9228 (25TH ST/CH 52)  
SEC 29PS-3  
25TH STREET WELL #4 REPAIRS  
ST. CLAIR COUNTY



DATE: 03/14/2025  
EXPIRATION: 11/30/2025  
SHEET NUMBERS: 1-5

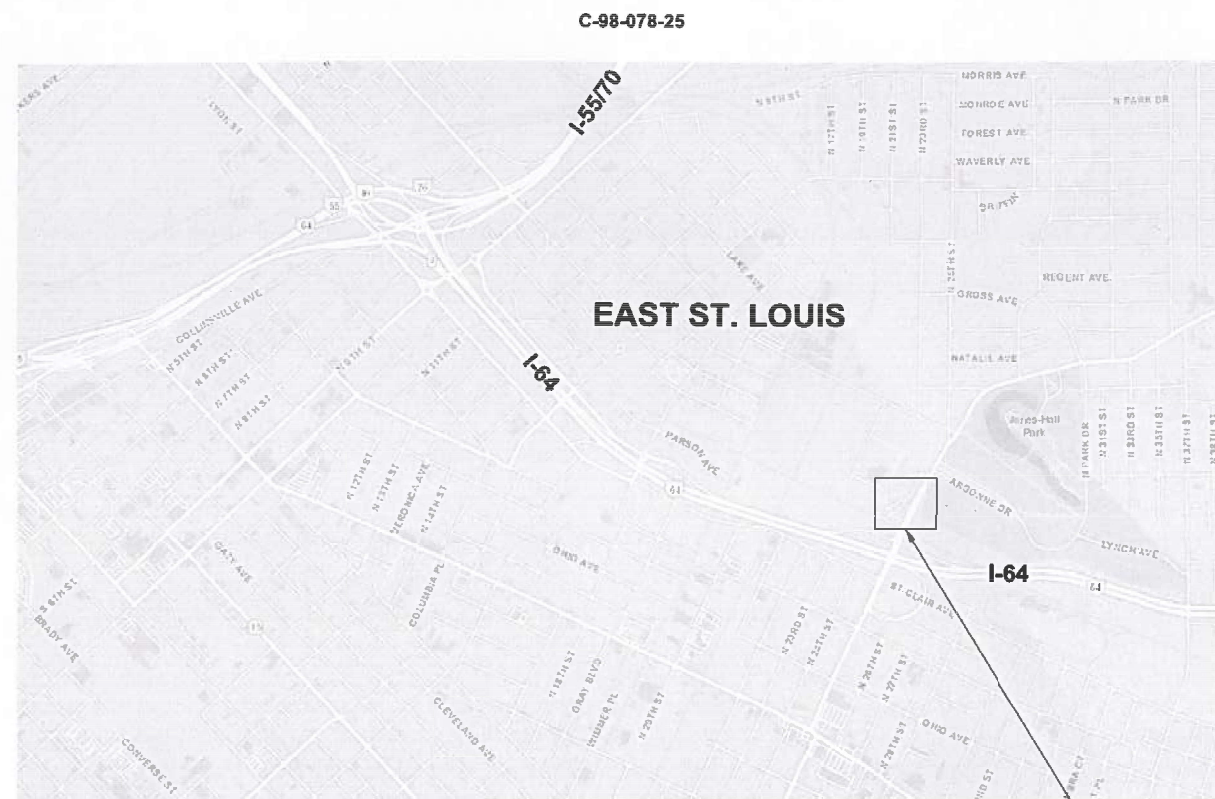


FULL SIZE PLANS HAVE BEEN PREPARED USING STANDARD  
ENGINEERING SCALES. REDUCED SIZED PLANS WILL NOT  
CONFORM TO STANDARD SCALES. IN MAKING MEASUREMENTS  
ON REDUCED PLANS, THE ABOVE SCALES MAY BE USED.

J.U.L.I.E.  
JOINT UTILITY LOCATION INFORMATION FOR EXCAVATION  
1-800-892-0123  
OR 811

PROJECT ENGINEER: CHERYL KEPLAR  
PROJECT MANAGER: RICHARD BARBEE

CONTRACT NO. 76U34

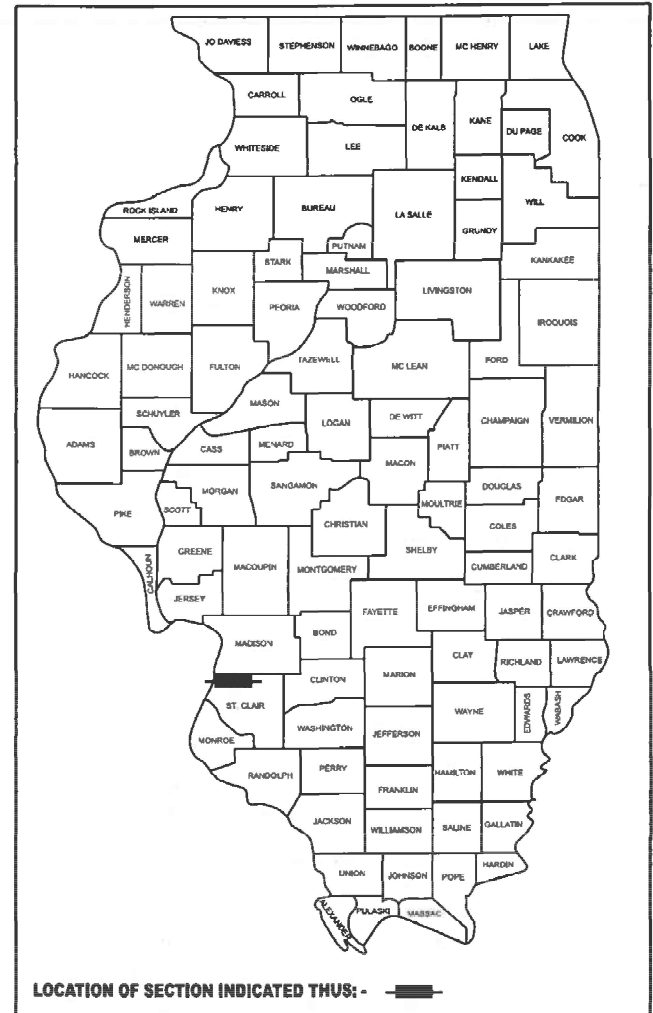


ST. CLAIR COUNTY  
LOCATION MAP (NTS)

PROJECT LOCATION  
LATITUDE: 38°37'25.29"N  
LONGITUDE: 90°7'23.86"W

FAI RTE.	SECTION	COUNTY	TOTAL SHEETS	SHEET NO.
9228	29PS-3	ST. CLAIR	5	1
		ILLINOIS	CONTRACT NO. 76U34	

D-98-026-25



**DONOHUE**  
230 WEST MONROE STREET, SUITE 2925  
CHICAGO, IL 60606  
312-236-9147

STATE OF ILLINOIS  
DEPARTMENT OF TRANSPORTATION

SUBMITTED March 17, 2025  
Zora [Signature] REGIONAL ENGINEER

May 9, 2025  
[Signature] ENGINEER OF DESIGN AND ENVIRONMENT

May 9, 2025  
[Signature] DIRECTOR OF HIGHWAYS PROJECT IMPLEMENTATION

PRINTED BY THE AUTHORITY  
OF THE STATE OF ILLINOIS

STATE HIGHWAY STANDARDS:

000001-08	STANDARD SYMBOLS, ABBREVIATIONS AND PATTERNS
001006	DECIMAL OF AN INCH AND OF A FOOT
701101-05	OFF-ROAD OPERATIONS, MULTILANE, 15' TO 24" FROM PAVEMENT EDGE
701601-09	URBAN LANE CLOSURE, MULTILANE, 1W OR 2W WITH NONTRAVERSABLE MEDIAN
701901-10	TRAFFIC CONTROL DEVICES

GENERAL NOTES:

1. NOTE THAT DURING CONSTRUCTION, THE CONTRACTOR SHALL KEEP ALL THE OTHER EXISTING GROUNDWATER WELLS OPERATIONAL. SHORT-TERM SHUTDOWN WILL BE PERMITTED WITH SPECIFIC WRITTEN PERMISSION (SEE SPECIAL PROVISIONS AND DRAWINGS).
2. ANY NOTIFICATION TO ANY AGENCY MUST BE MADE THROUGH THE CONSTRUCTION MANAGER. NOTIFICATION SHALL BE MADE TO THE AGENCIES AND UTILITIES AT LEAST 10 DAYS PRIOR TO ANY CONSTRUCTION IN THE AREA AND SHALL COMPLY WITH ALL RESTRICTIONS FOR EQUIPMENT MOVEMENTS AND CLEARANCES IN REGARDS TO THEIR FACILITIES. THE CONTRACTOR SHALL BE RESPONSIBLE FOR NOTIFICATION OF ALL EMERGENCY SERVICES.
3. UTILITIES KNOW TO HAVE FACILITIES WITHIN THE PROJECT AREA:

AMEREN ILLINOIS ELECTRIC  
AT&T  
CHARTER/SPECTRUM COMM.  
CITY OF EAST ST. LOUIS  
CLEARWAVE FIBER LLC  
IL AMERICAN WATER - EAST ST. LOUIS
4. THE CONTRACTOR SHALL BE RESPONSIBLE FOR PROTECTION OF ALL UNERGROUND OR SURFACE UTILITIES EVEN THOUGH THEY MAY NOT BE SHOWN ON THE PLANS. ANY UTILITY THAT IS DAMAGED DURING CONSTRUCTION SHALL BE REPAIRED OR REPLACED TO THE SATISFACTION OF THE ENGINEER.
5. IDOT STRONGLY ENCOURAGES THE PRIME CONTRACTOR AND THEIR APPROVED SUBCONTRACTORS TO HIRE MINORITY, WOMEN AND DISADVANTAGED INDIVIDUALS FROM ITS FEDERALLY FUNDED HIGHWAY CONSTRUCTION CAREERS TRAINING PROGRAM (HCCTP) TO HELP MEET WORKFORCE AND TRAINEE GOALS. THIS PROGRAM IS TRAINING MINORITIES, WOMEN AND DISADVANTAGED INDIVIDUALS IN HIGHWAY CONSTRUCTION RELATED SKILLS, E.G., MATH FOR THE TRADES, JOB READINESS, TECHNICAL SKILLS COURSE WORK (CARPENTRY, CONCRETE FLATWORK, BLUEPRINT READING, SITE PLANS, SITE WORK, TOOLS USE ETC.) AND OSHA 10 HOUR CERTIFICATION, TO PREPARE THEM FOR A CAREER IN THE HIGHWAY CONSTRUCTION TRADES. GRADUATES ARE WELL TRAINED AND READY TO BECOME PRODUCTIVE ENTRY-LEVEL CONSTRUCTION WORKERS. CONTACT THE DISTRICT 8 EEO OFFICE AT 681-348-3360 AND/OR THE HCCTP COORDINATOR AT 619-874-6528 TO LEARN MORE ABOUT THE PROGRAM AND FOR ASSISTANCE IN MEETING WORKFORCE AND TRAINEE GOALS.
6. A FIELD SURVEY WAS NOT PERFORMED. PLAN SHEETS 002-CP-1 (SHEET 4) AND 100-SP-1 (SHEET 5) WERE CREATED USING EXISTING PLANS AND AERIAL IMAGERY.

COMMITMENTS:

1. NONE THIS CONTRACT

MODEL: 001-G-2  
FILE NAME: D876J37-shr-genote.dgn



USER NAME	= sbremer	DESIGNED	- JG	REVISED	-
		DRAWN	- DD	REVISED	-
		CHECKED	- JG	REVISED	-
PLOT DATE	= 3/7/2025	DATE	- 3/14/2025	REVISED	-

STATE OF ILLINOIS  
DEPARTMENT OF TRANSPORTATION

25TH STREET WELL #4 REPAIRS  
STATE HIGHWAY STANDARDS, GENERAL NOTES,  
AND COMMITMENTS

SCALE: SHEET 2 OF 5 SHEETS STA. TO STA.

001-G-2

REV - MS

F.A.P RTE.	SECTION	COUNTY	TOTAL SHEETS	SHEET NO.
9228	29PS-3	ST. CLAIR	5	2
CONTRACT NO. 76U34				
ILLINOIS FED. AID PROJECT				

MODEL: 002-CP-1  
FILE NAME: D876U34-shrt-plan-002CP1.dgn



USER NAME = ddrescher	DESIGNED - JG	REVISED -
	DRAWN - DD	REVISED -
	CHECKED - JG	REVISED -
PLOT DATE = 3/11/2025	DATE - 3/14/2025	REVISED -

STATE OF ILLINOIS  
DEPARTMENT OF TRANSPORTATION

25TH STREET WELL #4 REPAIRS GENERAL SUMMARY OF QUANTITIES			
SCALE:	SHEET 3 OF 5 SHEETS	STA.	TO STA.

F.A.P RTE.	SECTION	COUNTY	TOTAL SHEETS	SHEET NO.
9228	29PS-3	ST. CLAIR	5	3
CONTRACT NO. 76U34				
		ILLINOIS	FED. AID PROJECT	

100% STATE

CONSTR. CODE
ST. CLAIR ROADWAY
0044 URBAN

CODE NO.	ITEM	UNIT	TOTAL QUANTITY	
67100100	MOBILIZATION	L SUM	1	1
70102630	TRAFFIC CONTROL AND PROTECTION, STANDARD 701601	L SUM	1	1
X0327795	WELL CASING REPAIR	L SUM	1	1

REV - MS

001-G-3



- NOTES:**
1. CONTRACTOR SHALL LOCATE EXISTING SITE UTILITIES INCLUDING ELECTRICAL LINES FROM CONTROLLER CABINET. DISCHARGE PIPING FROM WELL 4 AND WELL 6 AND OVERHEAD HIGHWAY LIGHTING.

SCALE: 0 30'

MODEL: 002-CP-1  
FILE NAME: D876U34-shit-plan-002CP1.dgn



USER NAME	= sbremer	DESIGNED	- SW	REVISED	-
		DRAWN	- DD	REVISED	-
		CHECKED	- JG	REVISED	-
PLOT DATE	= 3/11/2025	DATE	- 3/11/2025	REVISED	-

STATE OF ILLINOIS  
DEPARTMENT OF TRANSPORTATION

25TH STREET WELL #4 REPAIRS  
SITE DEVELOPMENT  
PLAN

SCALE: SHEET 4 OF 5 SHEETS STA. TO STA.

002-CP-1

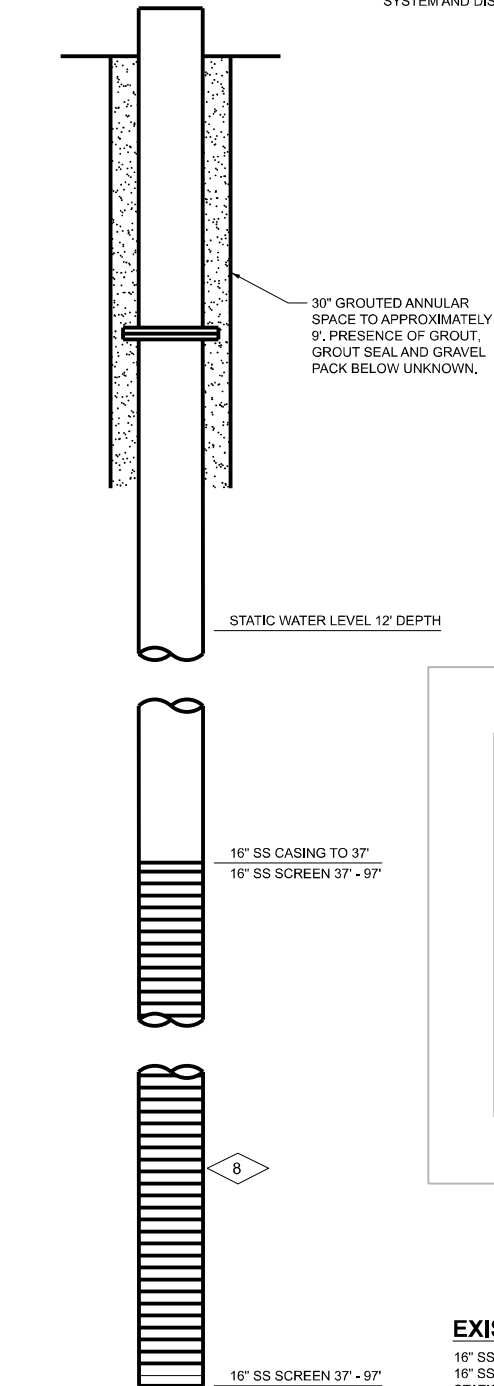
F.A.P. RTE.	SECTION	COUNTY	TOTAL SHEETS	SHEET NO.
9228	29PS-3	ST. CLAIR	5	4
CONTRACT NO. 76U34				
ILLINOIS FED. AID PROJECT				

GENERAL NOTES:

1. CONTRACTOR TO FIELD VERIFY EXISTING CONDITIONS, DIMENSIONS, AND ELEVATIONS PRIOR TO CONSTRUCTION AND/OR FABRICATION.
2. CONTRACTOR TO LOCATE ALL ELECTRICAL LINES FROM CONTROLLER CABINET, WIRING FOR LIGHTING SYSTEM AND DISCHARGE PIPING FOR WELLS 4 AND 5.

SEQUENCE OF CONSTRUCTION:

1. DISCONNECT POWER TO WELL 4 AT BREAKER AND PROPERLY SECURE THE POWER DUCT DURING EXCAVATION.
2. REMOVE ALL PROCESS DISCHARGE PIPING WITHIN VAULT. SECURE IN LOCKED STORAGE ON SITE OR STORE OFF SITE.
3. DISCONNECT DISCHARGE PIPING OUTSIDE VAULT AT FIRST FLANGE. CAP PIPING BEYOND.
4. PULL SUBMERSIBLE PUMP AND MOTOR AND COLUMN PIPING FROM WELL. REMOVE TOP FLANGE FROM WELL. SECURE ALL IN LOCKED STORAGE ON SITE OR STORE OFF SITE.
5. REMOVE GROUT BETWEEN BASE SLAB AND WELL CASING. REMOVE AND SALVAGE CONCRETE VAULT FOR REINSTALLATION.
6. EXCAVATE TO LOCATION OF CASING FAILURE AND CUT SS CASING OFF MINIMUM OF 6" BELOW FAILURE LOCATION. BEVEL EDGE AS NEEDED. WELD NEW 16" SS CASING WITH TOP FLANGE TO CUT CASING. FIELD VERIFY CASING LENGTH.
7. PLACE 30" TEMPORARY CASING TO DEPTH OF EXCAVATION AND REGROUT ANNULAR SPACE BETWEEN 30" TEMPORARY CASING AND 16" SS CASING.
8. REMOVE DEBRIS FROM BOTTOM OF WELL BY AIRLIFTING.
9. COMPACT SUBGRADE BEDDING AND REINSTALL CONCRETE VAULT AS REQUIRED TO MATCH EXISTING CONDITIONS. FILL VOID BETWEEN BASE SLAB AND WELL CASING WITH NEW CEMENT GROUT.
10. REINSTALL SUBMERSIBLE PUMP AND MOTOR AND COLUMN PIPING.
11. REINSTALL PROCESS DISCHARGE PIPING AND RECONNECT ELECTRICAL SERVICE. TEST PUMP OPERATION.



EXISTING WELL 4 DATA

16" SS CASING: 0 TO 37 FEET  
16" SS SCREEN: 37 TO 97 FEET  
STATIC WATER LEVEL: 12 FEET

DEBRIS/SEDIMENT FROM 93 TO 97 FEET

DEPTH TO TOP OF SUBMERSIBLE PUMP: XX FEET

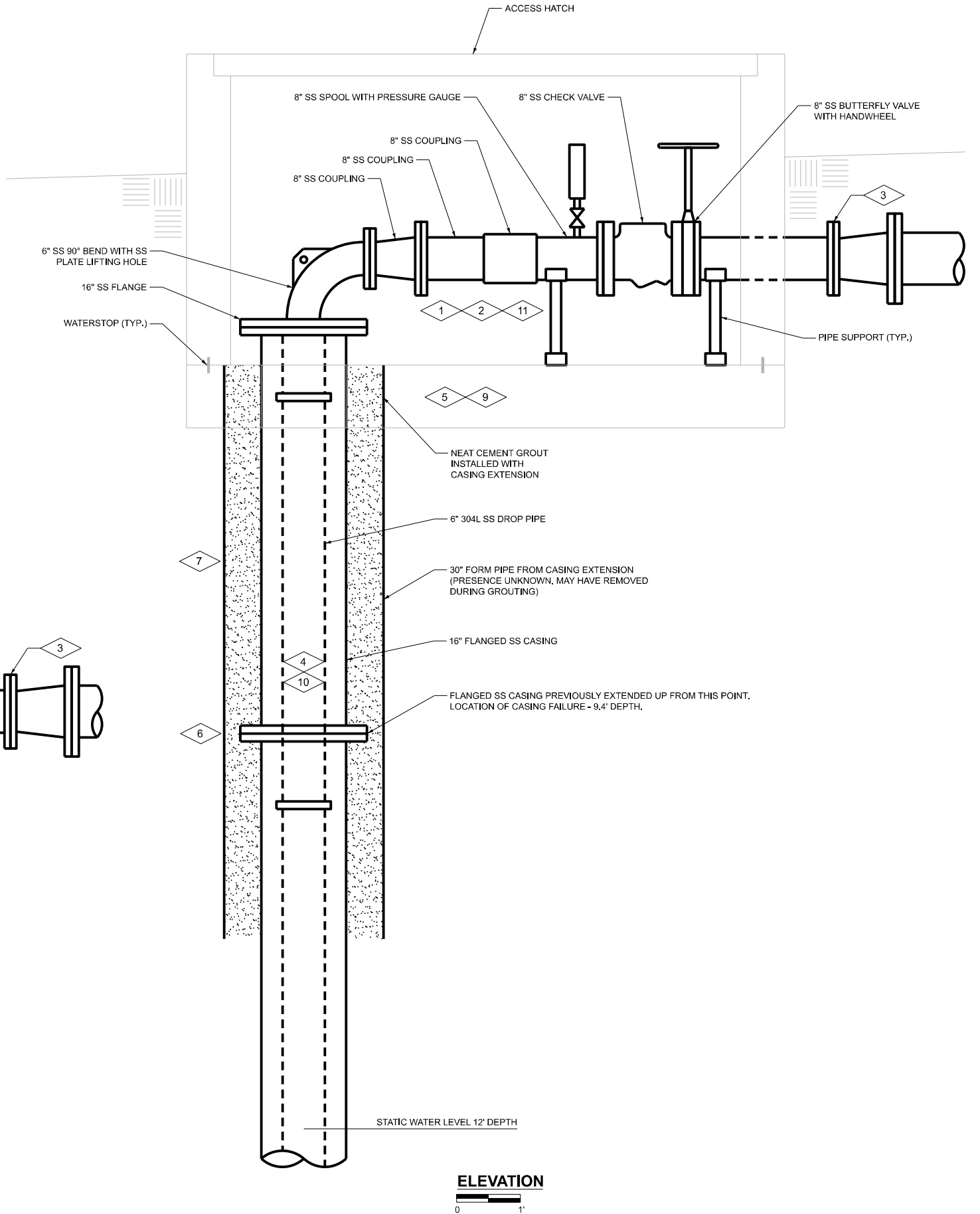
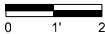
NOTES:

1. BASED ON ISGS LOG AND VIDEO LOG FROM 2/28/2024  
2. 0 DEPTH = VAULT FLOOR  
3. ALL DEPTHS ARE APPROXIMATE

PLAN



EXISTING WELL  
CONSTRUCTION DIAGRAM



100-SP-1

STATE OF ILLINOIS  
DEPARTMENT OF TRANSPORTATION

25TH STREET WELL #4 REPAIRS  
STRUCTURAL / PLUMBING  
PLAN AND SECTION

SCALE: SHEET 5 OF 5 SHEETS STA. TO STA.

F.A.P RTE.	SECTION	COUNTY	TOTAL SHEETS	SHEET NO.
9228	29PS-3	ST. CLAIR	5	5
CONTRACT NO. 76U34				
ILLINOIS FED. AID PROJECT				