

STATE OF ILLINOIS
DEPARTMENT OF TRANSPORTATION

**PROPOSED
HIGHWAY PLANS**

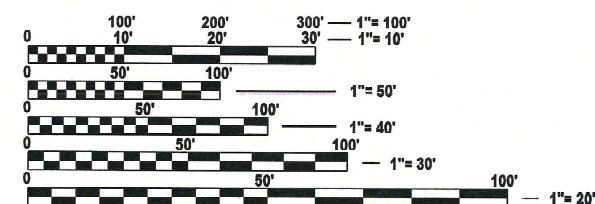
**FAI ROUTE 70 (I-70)
SECTION 82-1-B-2BJR-2**

**BRIDGE JOINT REPLACEMENT/REPAIRS
ST. CLAIR COUNTY**

C-98-048-25

PROJECT LOCATION
SN 082-0322

FOR INDEX OF SHEETS, SEE SHEET NO. 2



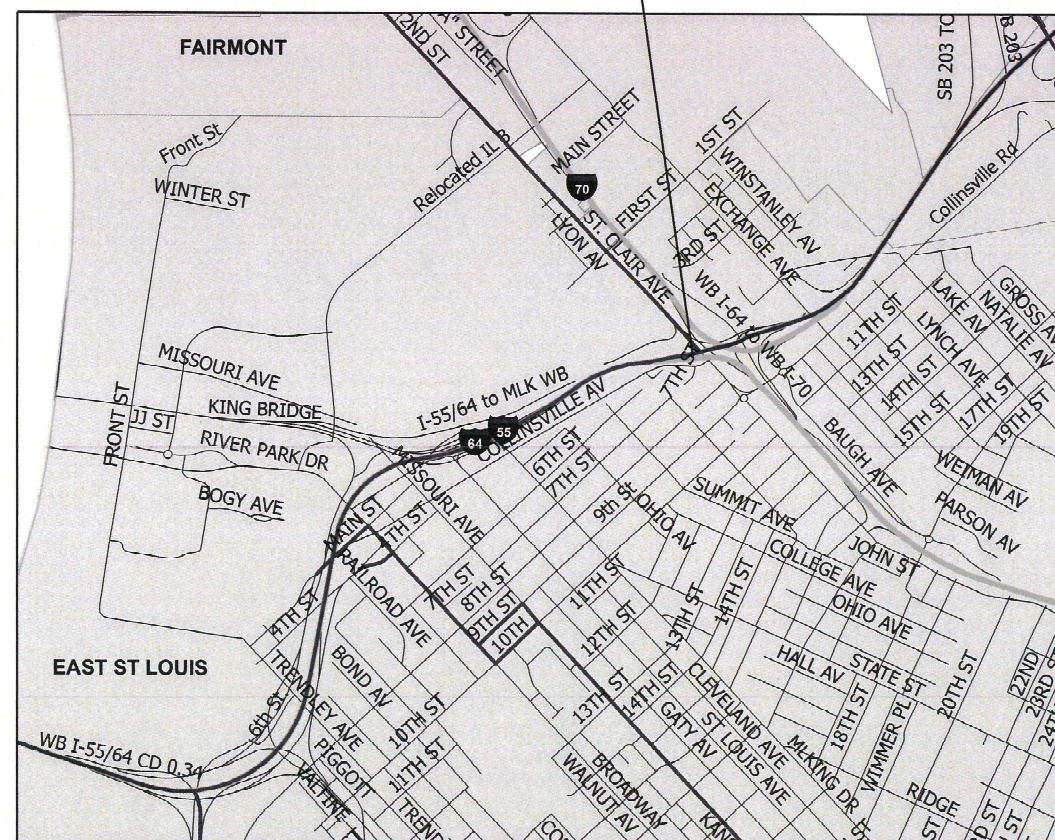
FULL SIZE PLANS HAVE BEEN PREPARED USING STANDARD ENGINEERING SCALES. REDUCED SIZED PLANS WILL NOT CONFORM TO STANDARD SCALES. IN MAKING MEASUREMENTS ON REDUCED PLANS, THE ABOVE SCALES MAY BE USED.

J.U.L.I.E.
JOINT UTILITY LOCATION INFORMATION FOR EXCAVATION
1-800-892-0123
OR 811

PROJECT ENGINEER: BILLIE OWEN
PROJECT MANAGER: MICHAEL BERG

CONTRACT NO. 76U24

N
T2N



INDEX OF SHEETS

- 1COVER SHEET
- 2INDEX OF SHEETS, HIGHWAY STANDARDS, GENERAL NOTES, AND COMMITMENTS
- 3-4SUMMARY OF QUANTITIES
- 5-7STAGE I
- 8-10STAGE II
- 11-21STRUCTURE PLANS

HIGHWAY STANDARDS

- 000001-08STANDARD SYMBOLS, ABBREVIATIONS AND PATTERNS
- 001001-02AREAS OF REINFORCEMENT BARS
- 001006DECIMAL OF AN INCH AND OF A FOOT
- 701101-05OFF ROAD MOVING OPERATIONS, MULTILANE, 15' TO 24" FROM PAVEMENT EDGE
- 701423-10LANE CLOSURE, MULTILANE, WITH BARRIER, FOR SPEEDS 45 MPH TO 55MPH
- 701901-10TRAFFIC CONTROL DEVICES
- 704001-08TEMPORARY CONCRETE BARRIER

GENERAL NOTES

- 1UTILITIES KNOWN TO HAVE FACILITIES WITHIN THE PROJECT AREAS
- AT&T ILLINOIS
CITY OF EAST ST. LOUIS
ILLINOIS AMERICAN WATER COMPANY
LEVEL 3 COMMUNICATIONS, LLC
- 2NO SURVEY WAS PREFORMED FOR THIS PROJECT AND THE PLANS WERE CREATED USING MICROFILM AND FIELD MEASUREMENTS.
- 3THE RESIDENT ENGINEER SHALL VERIFY THE EXISTENCE OF HIGHWAY LIGHTING, INTELLIGENT TRANSPORTATION SYSTEMS (I.T.S.) UTILITIES, AND/OR ELECTRICAL CABLES ASSOCIATED WITH TRAFFIC SIGNALS WITHIN THE PROJECT LIMITS. IF ANY OF THESE EXIST WITHIN THE PROJECT LIMITS, AND IF THESE ITEMS REQUIRE LOCATING, THE CONTRACTOR SHALL BE DIRECTED TO DO SO ACCORDING TO SECTION 803 OF THE STANDARD SPECIFICATIONS. THIS WORK SHALL BE PAID FOR ACCORDING TO ARTICLE 109.04 OF THE STANDARD SPECIFICATIONS.
- 42 CHANGEABLE MESSAGE BOARDS SHALL BE REQUIRED FOR THIS PROJECT. THEY SHALL BE PLACED 2 WEEKS PRIOR TO ANY LANE CLOSURE. THE CHANGEABLE MESSAGE BOARDS SHALL BE PLACED AS SHOWN IN THE PLANS AND AT THE DIRECTION OF THE ENGINEER.
- 5THE DEPARTMENT STRONGLY ENCOURAGES THE PRIME CONTRACTOR AND THEIR APPROVED SUB-CONTRACTORS TO HIRE MINORITY, WOMEN AND DISADVANTAGED INDIVIDUALS FROM IT'S FEDERALLY FUNDED HIGHWAY CONSTRUCTION CAREERS TRAINING PROGRAM (HCCTP) TO HELP MEET WORKFORCE AND TRAINEE GOALS. THIS PROGRAM IS TRAINING MINORITIES, WOMEN AND DISADVANTAGED INDIVIDUALS IN HIGHWAY CONSTRUCTION RELATED SKILLS, E.G., MATH FOR THE TRADES, JOB READINESS, TECHNICAL SKILLS COURSEWORK (CARPENTRY, CONCRETE FLATWORK, BLUEPRINT READING, SITE PLANS, SITE WORK, TOOLS USE, ECT.) AND OSHA 10 HOUR CERTIFICATION, TO PREPARE THEM FOR A CAREER IN THE HIGHWAY CONSTRUCTION TRADES. GRADUATES ARE WELL-TRAINED AND READY TO BECOME PRODUCTIVE ENTRY-LEVEL CONSTRUCTION WORKERS. CONTRACT THE DISTRICT 8 EEO OFFICE AT 618-346-3360 AND/OR THE HCCTP COORDINATOR AT 618-874-6528 TO LEARN MORE ABOUT THE PROGRAM AND FOR ASSISTANCE IN MEETING WORKFORCE AND TRAINEE GOALS.

COMMITMENTS

NONE

REV - MS

MODEL: Untitled [Sheet]
FILE NAME: c:\p\work\pwt\td\bergm\dd1098910\0876U24-sh-geomcde.dgn

	USER NAME = michael.berg	DESIGNED -	REVISED -	STATE OF ILLINOIS DEPARTMENT OF TRANSPORTATION	INDEX OF SHEETS, HIGHWAY STANDARDS GENERAL NOTES AND COMMITMENTS	F.A.I. RTE.	SECTION	COUNTY	TOTAL SHEETS	SHEET NO.	
		DRAWN -	REVISED -			70	82-1B-2BJR-2	ST. CLAIR		2	
		CHECKED -	REVISED -			CONTRACT NO. 76U24					
	PLOT DATE = 4/4/2025	DATE -	REVISED -			ILLINOIS FED. AID PROJECT					
				SCALE:		SHEET	Untitled	OF	SHEETS	STA.	TO STA.

100% STATE

CODE NO.	ITEM	UNIT	TOTAL QUANTITY	CONSTR. CODE
				BRIDGE
				0047
				S.N.082-0322
42001300	PROTECTIVE COAT	SQ YD	122	122
50102400	CONCRETE REMOVAL	CU YD	54.2	54.2
50300255	CONCRETE SUPERSTRUCTURE	CU YD	64.6	64.6
50500505	STUD SHEAR CONNECTORS	EACH	30	30
50800205	REINFORCEMENT BARS, EPOXY COATED	POUND	12970	12970
50800515	BAR SPLICERS	EACH	101	101
50800530	MECHANICAL SPLICERS	EACH	135	135
67000400	ENGINEER'S FIELD OFFICE, TYPE A	CAL MO	6	6
67100100	MOBILIZATION	L SUM	1	1
70100325	TRAFFIC CONTROL AND PROTECTION, STANDARD 701423	EACH	1	1
70107025	CHANGEABLE MESSAGE SIGN	CAL DA	204	204
70400100	TEMPORARY CONCRETE BARRIER	FOOT	1750	1750
70400200	RELOCATE TEMPORARY CONCRETE BARRIER	FOOT	1725	1725
70600251	IMPACT ATTENUATORS, TEMPORARY (NON- REDIRECTIVE, NARROW), TEST LEVEL 3	EACH	2	2

REV - MS

MODEL: SQO [Sheet]
FILE NAME: c:\pw\work\pwid\bergmdd1088910\0876\U24-sh-SQO.dgn

	USER NAME = michael.berg	DESIGNED -	REVISED -	STATE OF ILLINOIS DEPARTMENT OF TRANSPORTATION	SCALE:		SHEET 1	OF 2	SHEETS	STA.	TO STA.	F.A.P RTE.	SECTION	COUNTY	TOTAL SHEETS	SHEET NO.
		DRAWN -	REVISED -									70	82-1-B-2BJR-2	ST CLAIR	21	3
		CHECKED -	REVISED -									CONTRACT NO. 76U24				
	PLOT DATE = 4/4/2025	DATE -	REVISED -									ILLINOIS FED. AID PROJECT				

100% STATE

				CONSTR. CODE
CODE NO.	ITEM	UNIT	TOTAL QUANTITY	BRIDGE
				0047
				S.N.082-0322
X7010035	TRAFFIC CONTROL AND PROTECTION, STANDARD 701423 (SPECIAL)	EACH	1	1
Z0034806	MODULAR EXPANSION JOINT-SWIVEL 6"	FOOT	49	49
Z0076604	TRAINEES TRAINING PROGRAM GRADUATE	HOUR	1000	1000
Z0034809	MODULAR EXPANSION JOINT-SWIVEL 9"	FOOT	98	98

Ø

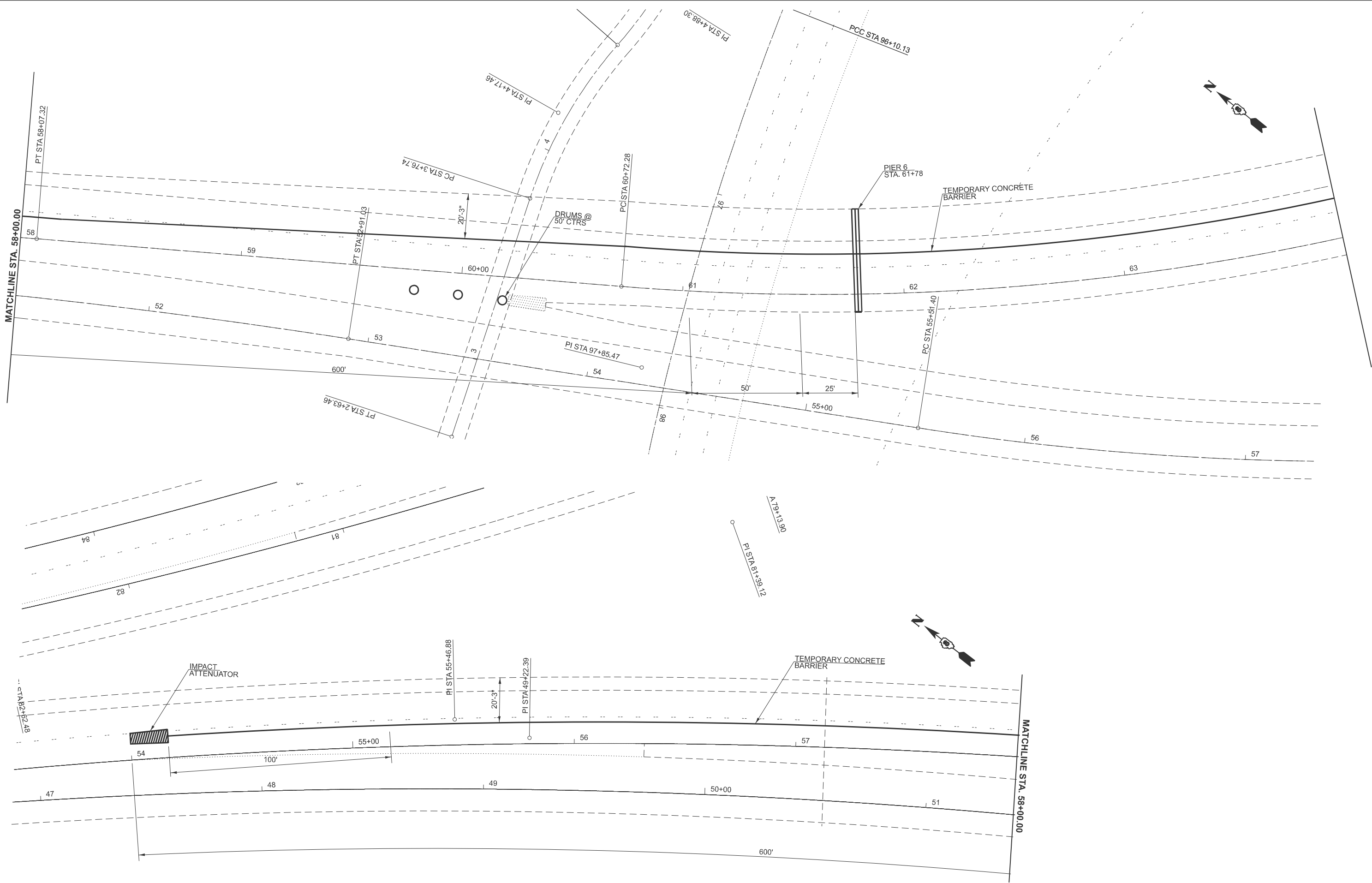
Ø 0042

REV - MS

MODEL: SQQ-1 [Sheet]
FILE NAME: c:\pw_work\pwidolbergmdd1098910\0876\U24-sht-SQQ.dgn

	USER NAME = michael.berg	DESIGNED -	REVISED -	STATE OF ILLINOIS DEPARTMENT OF TRANSPORTATION			F.A.P RTE.	SECTION	COUNTY	TOTAL SHEETS	SHEET NO.
		DRAWN -	REVISED -				70	82-1-B-2BJR-2	ST CLAIR	21	4
		CHECKED -	REVISED -				CONTRACT NO. 76U24				
	PLOT DATE = 4/4/2025	DATE -	REVISED -				ILLINOIS FED. AID PROJECT				
SCALE:		SHEET 2 OF 2 SHEETS		STA.		TO STA.					

MODEL: 70E55N41 - Plan 4 [Sheet]
FILE NAME: c:\p\work\p\rd\bergmdd\1098910\0876U24-sh-staging2.dgn



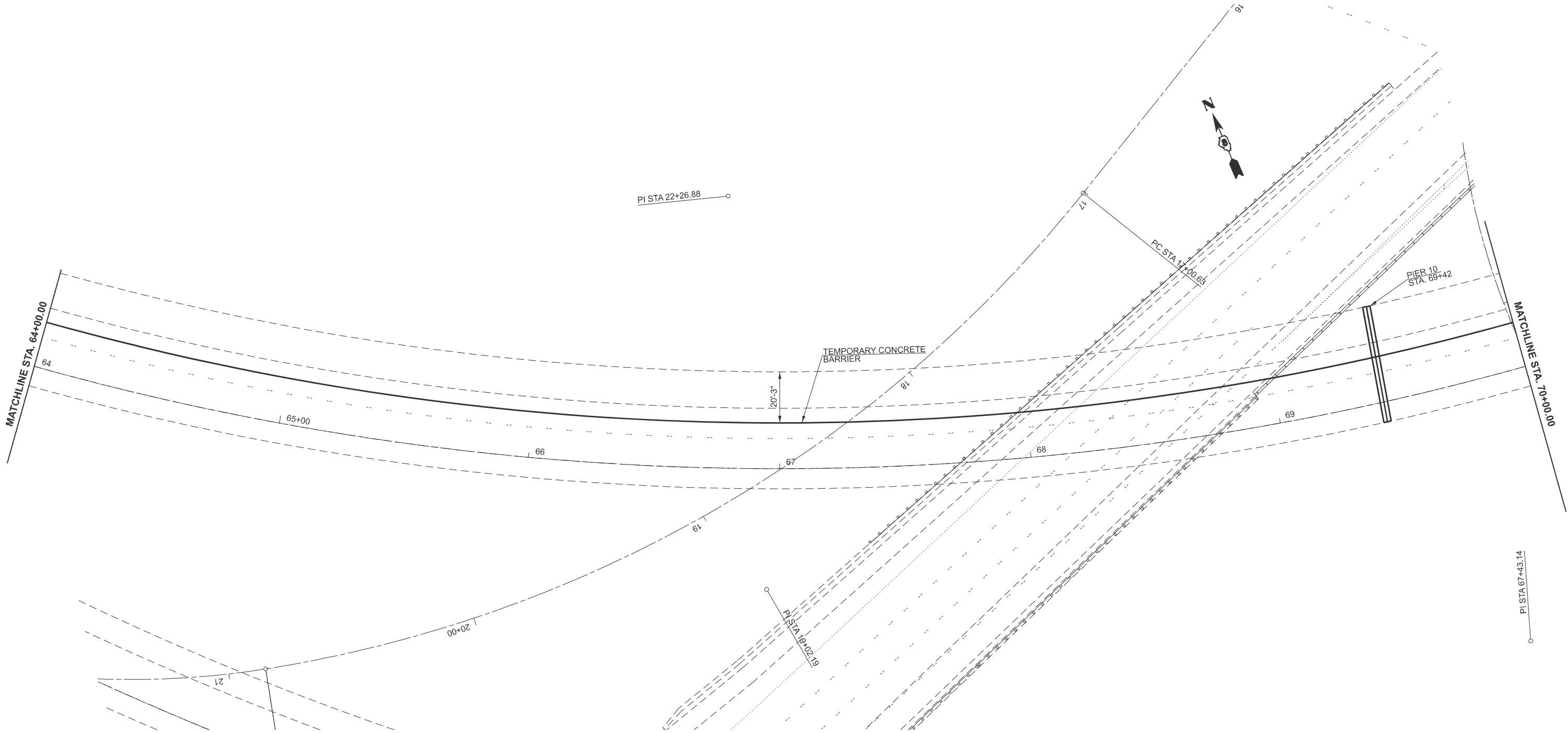
USER NAME = rahshun.miller	DESIGNED -	REVISED -
	DRAWN -	REVISED -
	CHECKED -	REVISED -
PLOT DATE = 4/4/2025	DATE -	REVISED -

STATE OF ILLINOIS
DEPARTMENT OF TRANSPORTATION

SCALE: 1"=20' SHEET 1 OF 3 SHEETS STA. 58+00.00 TO STA. 64+00.00

F.A.P. RTE.	SECTION	COUNTY	TOTAL SHEETS	SHEET NO.
70	82-1-B-2BJR-2	ST. CLAIR	11	9
CONTRACT NO. 76U24				
ILLINOIS FED. AID PROJECT				

MODEL: 70E55N+1 - Plan 5 [Sheet]
FILE NAME: c:\p\work\p\work\bergmdd1098910\0876\U24-sh-staging2.dgn



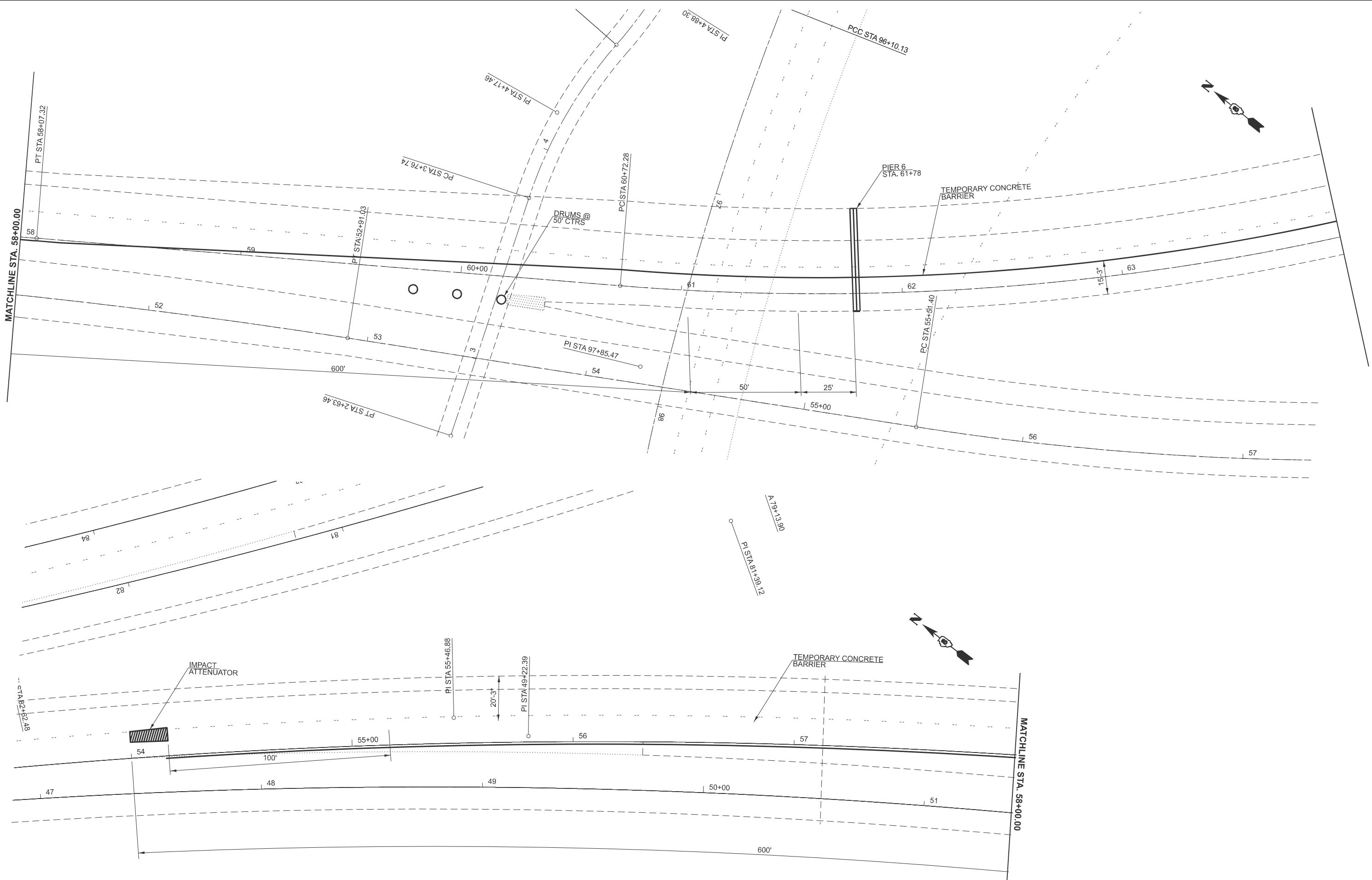
USER NAME	= rahshun.miller	DESIGNED	-	REVISED	-
		DRAWN	-	REVISED	-
		CHECKED	-	REVISED	-
PLOT DATE	= 4/4/2025	DATE	-	REVISED	-

STATE OF ILLINOIS
DEPARTMENT OF TRANSPORTATION

SCALE: 1"=20' SHEET 2 OF 3 SHEETS STA. 64+00.00 TO STA. 70+00.00

F.A.P RTE.	SECTION	COUNTY	TOTAL SHEETS	SHEET NO.
70	82-1-B-2BJR-2	ST. CLAIR	11	10
CONTRACT NO. 76U24				
ILLINOIS FED. AID PROJECT				

MODEL: 70E55N4-1 - Plan 4 [Sheet]
FILE NAME: c:\p\work\pwidomiller\raid1098910\D676U24-shl-staging3.dgn



USER NAME = rahshun.miller	DESIGNED -	REVISED -
	DRAWN -	REVISED -
	CHECKED -	REVISED -
PLOT DATE = 4/4/2025	DATE -	REVISED -

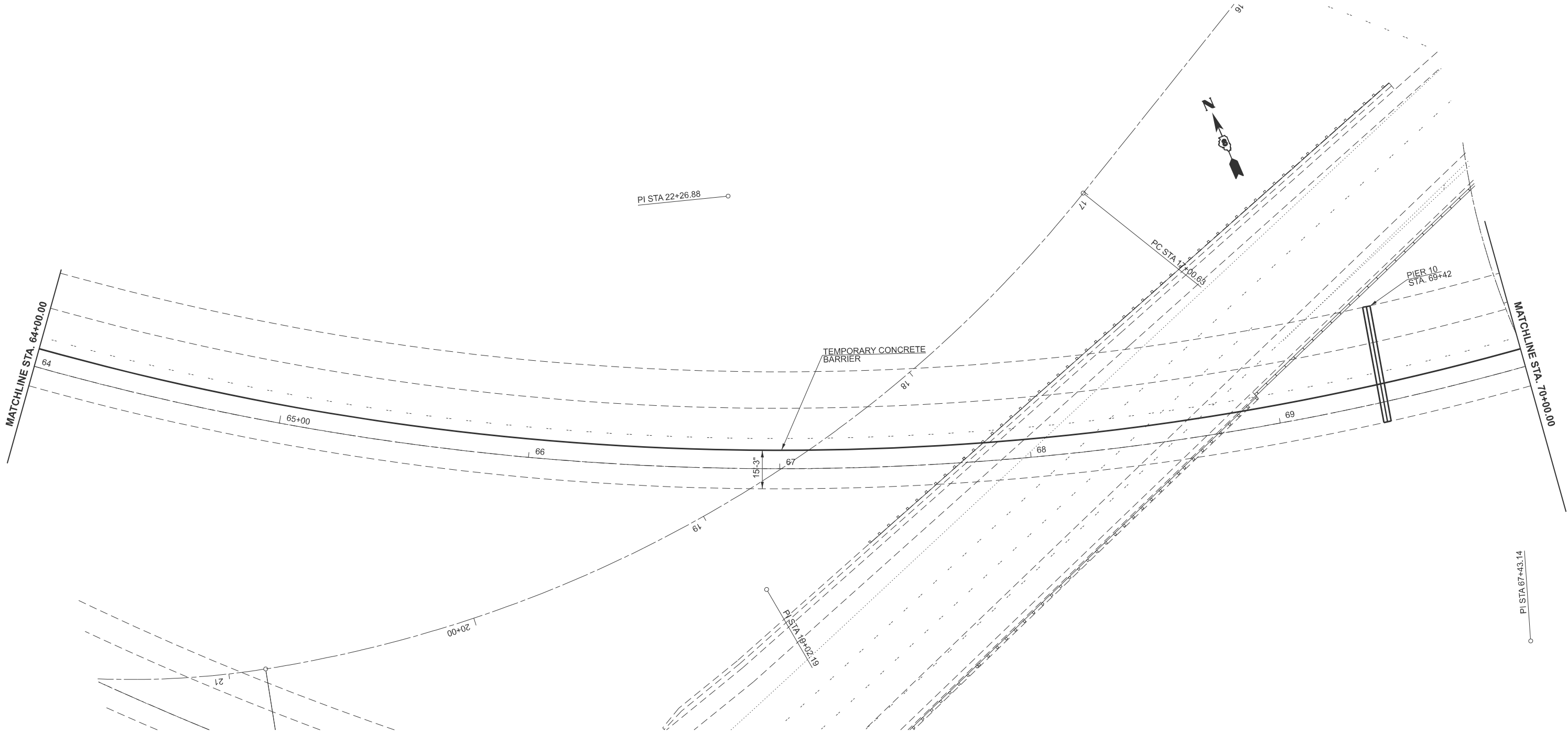
STATE OF ILLINOIS
DEPARTMENT OF TRANSPORTATION

STAGING 2

SCALE: 1"=20' SHEET 1 OF 3 SHEETS STA. 58+00.00 TO STA. 64+00.00

F.A.I RTE.	SECTION	COUNTY	TOTAL SHEETS	SHEET NO.
70	82-1-B-2BJR-2	ST. CLAIR	14	12
CONTRACT NO. 76U24				
ILLINOIS FED. AID PROJECT				

MODEL: 70E55N+1 - Plan 5 [Sheet]
FILE NAME: c:\pwwork\pwwork\miller\raid1098910\B676U24-sh-staging3.dgn



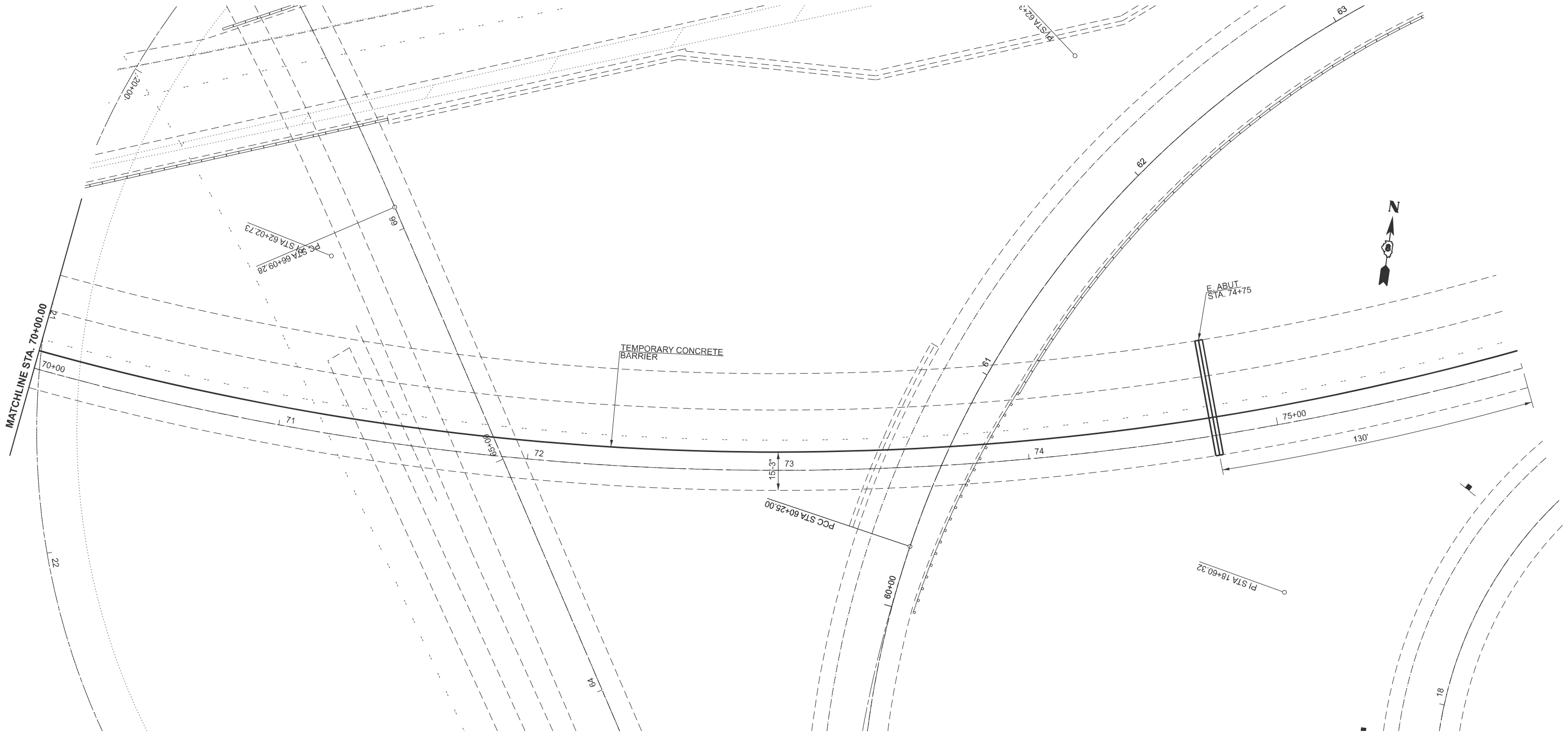
USER NAME = rahshun.miller	DESIGNED -	REVISED -
	DRAWN -	REVISED -
	CHECKED -	REVISED -
PLOT DATE = 4/4/2025	DATE -	REVISED -

STATE OF ILLINOIS
DEPARTMENT OF TRANSPORTATION

SCALE: 1"=20' SHEET 2 OF 3 SHEETS STA. 64+00.00 TO STA. 70+00.00

F.A.I RTE.	SECTION	COUNTY	TOTAL SHEETS	SHEET NO.
70	82-1-B-2BJR-2	ST. CLAIR	14	13
CONTRACT NO. 76U24				
ILLINOIS FED. AID PROJECT				

MODEL: 70E55N+1 - Plan 6 [Sheet]
FILE NAME: c:\pwwork\pwwork\miller\raid1098910\D676U24-sh-staging3.dgn



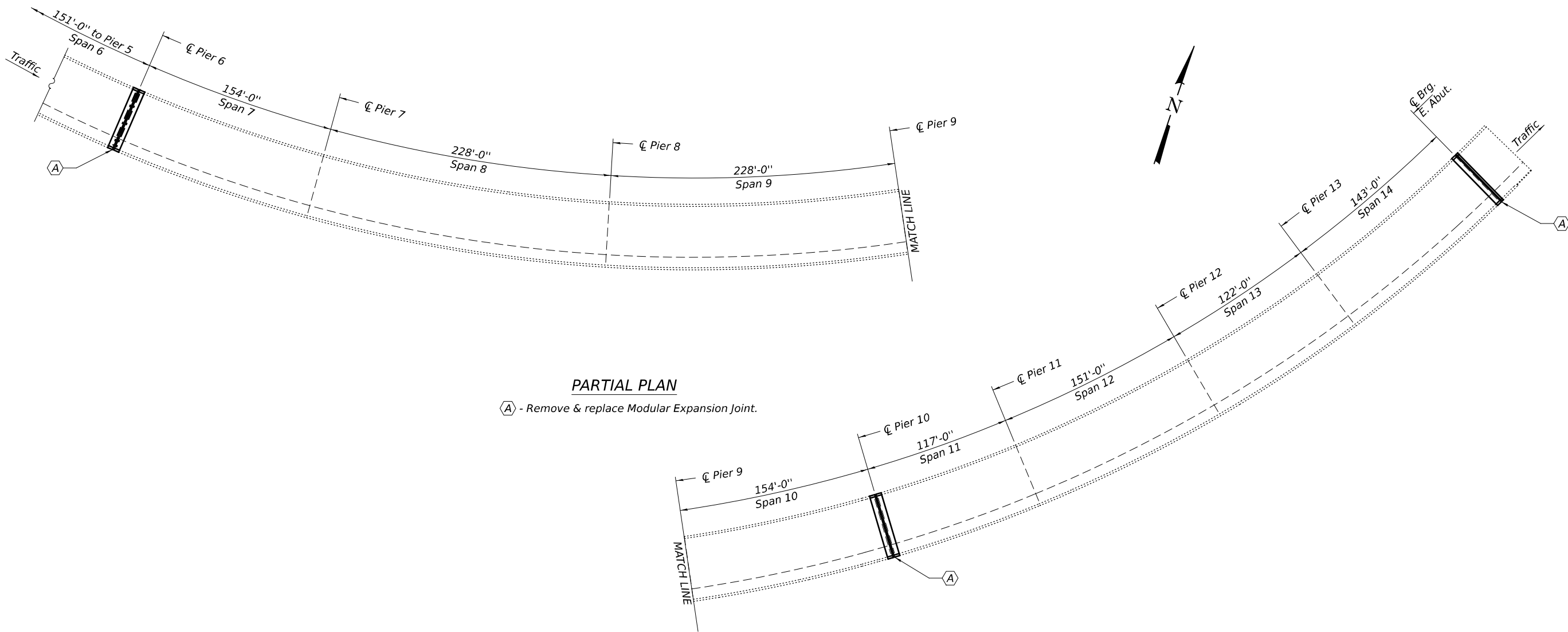
USER NAME	= rahshun.miller	DESIGNED	-	REVISED	-
		DRAWN	-	REVISED	-
		CHECKED	-	REVISED	-
PLOT DATE	= 4/4/2025	DATE	-	REVISED	-

STATE OF ILLINOIS
DEPARTMENT OF TRANSPORTATION

SCALE: 1"=20' SHEET 3 OF 3 SHEETS STA. 70+00.00 TO STA. 76+00.00

F.A.I RTE.	SECTION	COUNTY	TOTAL SHEETS	SHEET NO.
70	82-1-B-2BJR-2	ST. CLAIR	14	14
CONTRACT NO. 76U24				
ILLINOIS FED. AID PROJECT				

MODEL: 76U24-011
FILE NAME: pw:///jldo-pw/bentley.com:FW/IDOT/Documents/IDOT_O_ces/Bureau of Bridges and Structures/OBM Projects/0820322/CADDData/Bridge/0820322B.dgn



GENERAL NOTES

All structural steel shall conform to AASHTO Classification M-270 Gr. 50, unless otherwise noted.

Reinforcement bars designated (E) shall be epoxy coated.

Prior to pouring the new concrete deck, all heavy or loose rust, loose mill scale, and other loose detrimental foreign material shall be removed from the surfaces in contact with concrete (SSPC-SP3 standards). Tightly adhered paint may remain unless otherwise noted. Removal shall be accomplished by methods that will not damage the steel and the cost will be paid for according to Article 109.04 of the Standard Specifications. As directed by the Engineer, existing construction accessories welded to the top flange of beams and girders shall be removed. The weld areas shall be removed. The weld areas shall be ground flush and inspected for cracks using magnetic particle testing (MT) or dye penetrant testing (PT) by qualified personnel approved by the Engineer. Any cracks that cannot be removed by grinding ¼ inch deep shall be identified and reported to the Bureau of Bridges and Structures for further disposition. The cost of removing welded accessories, grinding and inspecting weld areas and grinding cracks will be paid for according to Article 109.04 of the Standard Specifications.

Plan dimensions and details relative to the existing structure have been taken from existing plans are subject to nominal construction variations. The Contractor shall field verify existing dimensions and details affecting new construction and make necessary approved adjustments prior to construction or ordering of materials. Such variations shall not be cause for additional compensation for a change in scope of the work, however, the Contractor will be paid for the quantity actually furnished at the unit price bid for the work.

Existing reinforcement bars extending into the removal area shall be cleaned, straightened and incorporated into the new construction. Any reinforcement bars that are damaged during concrete removal shall be replaced with an approved bar splicer or anchorage system at the contractor's expense.

The deck surface shall have its final finish tined according to Article 420.09(e)(1) of the Standard Specifications. Cost included with Concrete Superstructure.

Joint openings shall be adjusted according to Article 520.04 of the Std. Specs. when the deck is poured at an ambient temperature other than 50° F.

The number, location and orientation of support boxes shall be determined by the manufacturer. All boxes shall be located to miss the top flanges of the girders. Modular expansion joints shall be assembled in their final relative position with the ends in place for inspection and acceptance.

The steel components for the Modular Expansion Joints shall be hot-dip galvanized according to Special Provision for "Hot Dip Galvanizing for Strutural Steel".

Joint shall be fabricated to conform to the roadway profile and cross slopes.

LOCATION	TOTAL LONGITUDINAL MOVEMENT	JOINT SIZE
Pier 6	7.48"	9"
Pier 10	9.02"	9"
E. Abut.	3.97"	6"

DESIGN SPECIFICATIONS

2020 AASHTO LRFD Bridge Design Specifications, 9th Edition

TOTAL BILL OF MATERIAL

ITEM	UNIT	QUANTITY
Concrete Removal	Cu. Yd.	54.2
Concrete Superstruture	Cu. Yd.	64.6
Reinforcement Bars, Epoxy Coated	Pound	12970
* Protective Coat	Sq. Yd.	122
Bar Splicers	Each	101
Mechanical Splicers	Each	135
Shear Studs	Each	30
Modular Expansion Joint - Swivel 6"	Foot	49
Modular Expansion Joint - Swivel 9"	Foot	98

* Applied on new concrete only.



Expires: November 30, 2026

DESIGNED -	Victor H. Veliz
CHECKED -	Stephen M. Ryan
DRAWN -	daburdell
CHECKED -	VHV SMR

EXAMINED		DATE -	MAY 6, 2025
PASSED	ENGINEER OF STRUCTURAL SERVICES	REVISED -	
	ENGINEER OF BRIDGES AND STRUCTURES	REVISED -	

STATE OF ILLINOIS
DEPARTMENT OF TRANSPORTATION

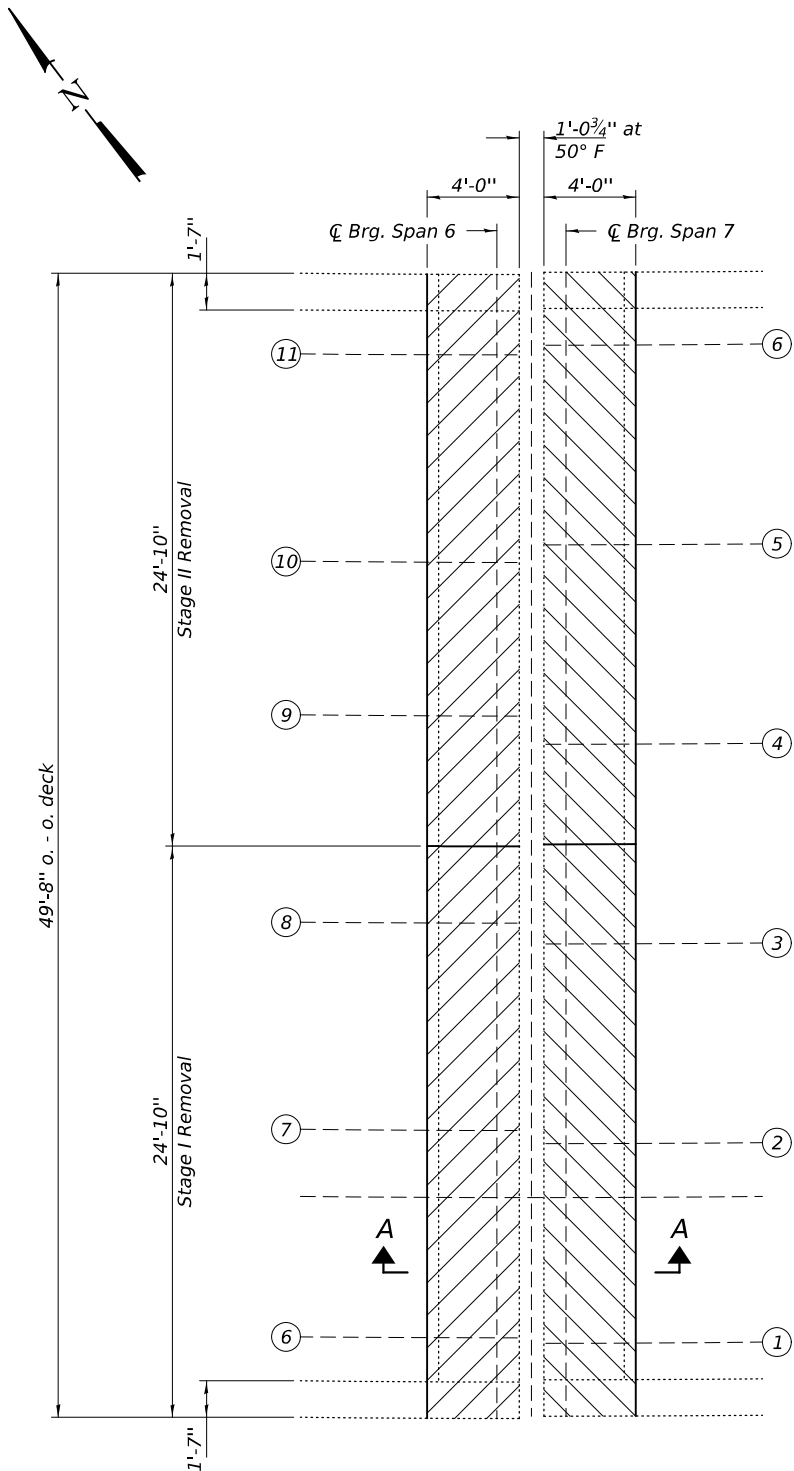
GENERAL PLAN (PARTIAL)
I-70E OVER I-55, CSX & KCS RAILROADS
SN 082-0322

SHEET 1 OF 11 SHEETS

F.A.I. RTE.	SECTION	COUNTY	TOTAL SHEETS	SHEET NO.
70	82-1 B-2BJR-2	ST. CLAIR	21	11
CONTRACT NO. 76U24				
ILLINOIS FED. AID PROJECT				

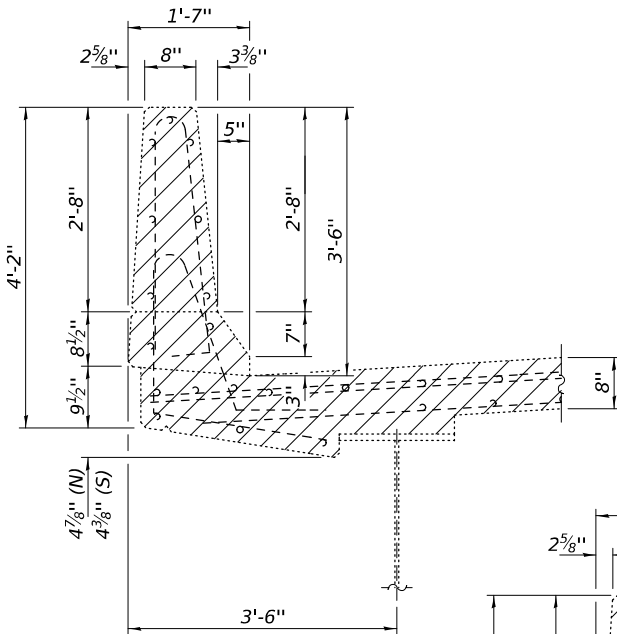
MODEL: 76U24+013
FILE NAME: pw://lido-qpw.bentley.com:FWIDOT/Documents/IDOT O ces/Bureau of Bridges and Structures/IDOT Projects/0820322/CADDData/Bridge/0820322B.dgn

5/9/2025 1:42:21 PM

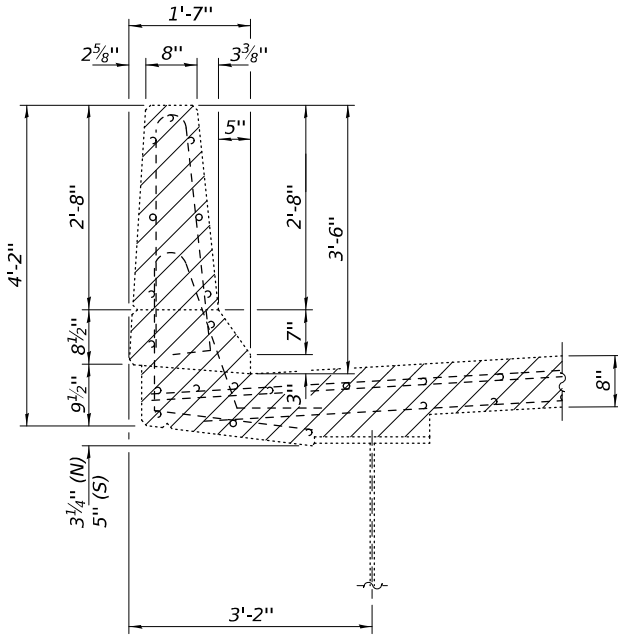


CONCRETE REMOVAL DETAILS

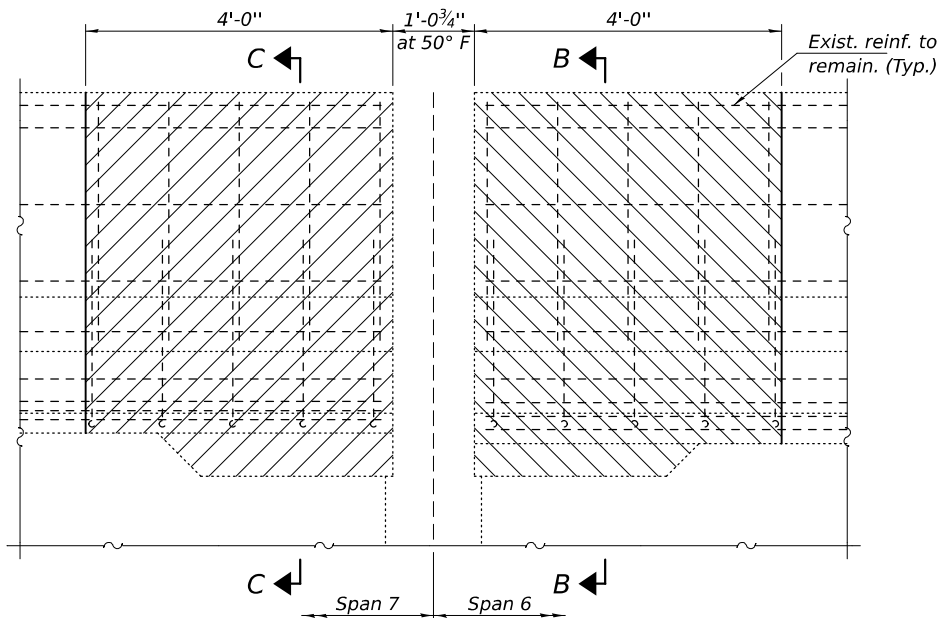
Notes:
Hatched areas indicate Concrete Removal.
Cost of existing modular joint removal is
included with Concrete Removal.



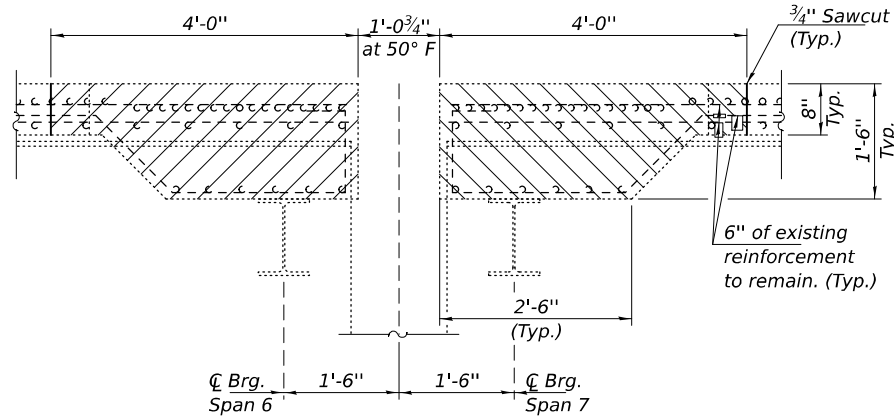
SEC B-B



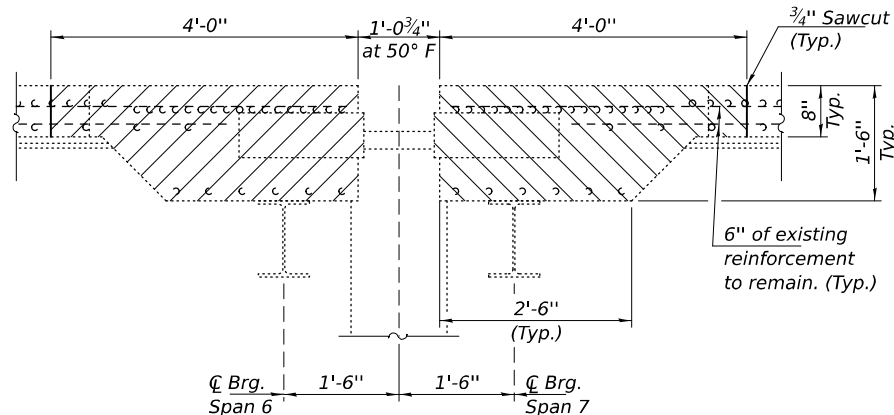
SEC C-C



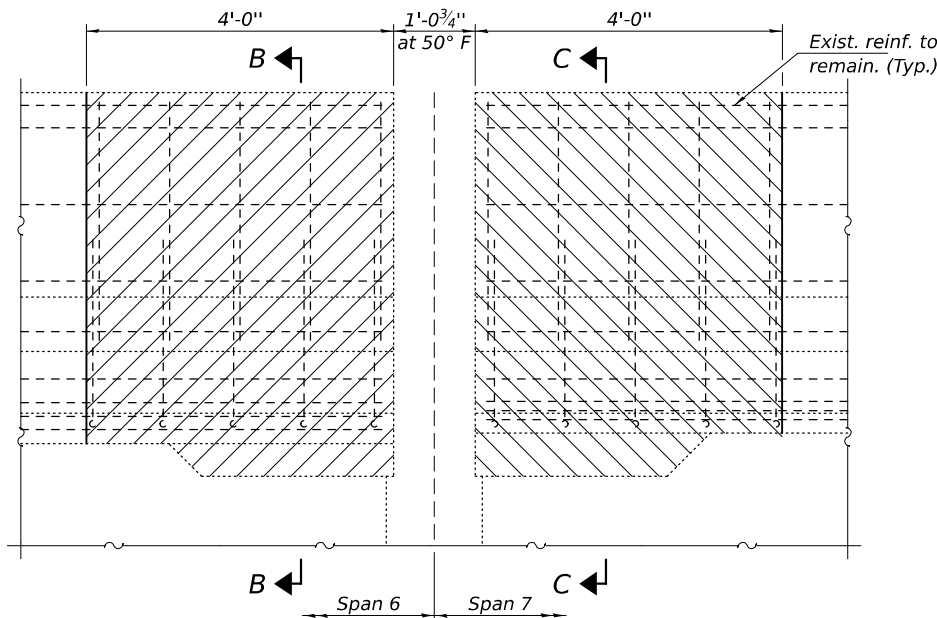
OUTSIDE ELEVATION
(Looking South)



SEC A-A
(Btwn. Support Boxes)



SEC A-A
(At Support Boxes)



OUTSIDE ELEVATION
(Looking North)

JOINT REMOVAL DETAILS - PIER 6
SN 082-0322

SHEET 3 OF 11 SHEETS

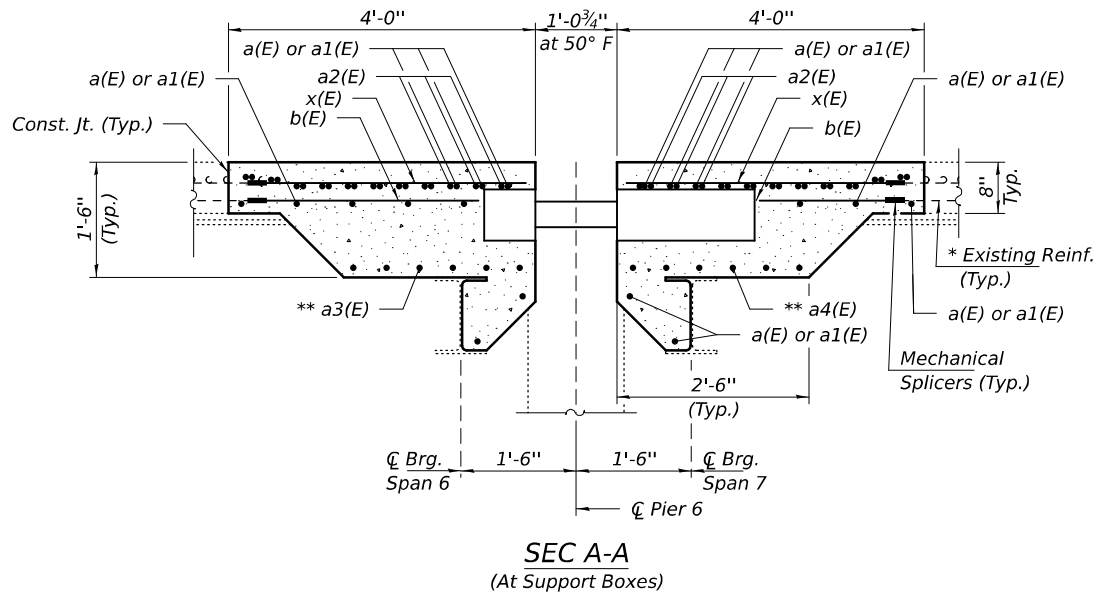
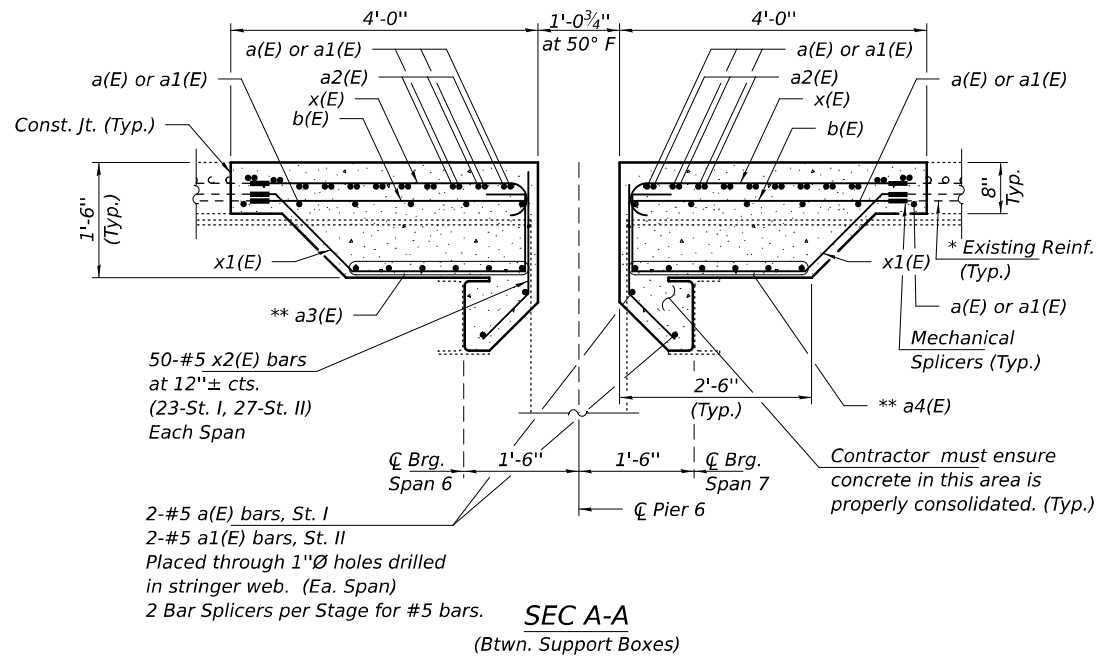
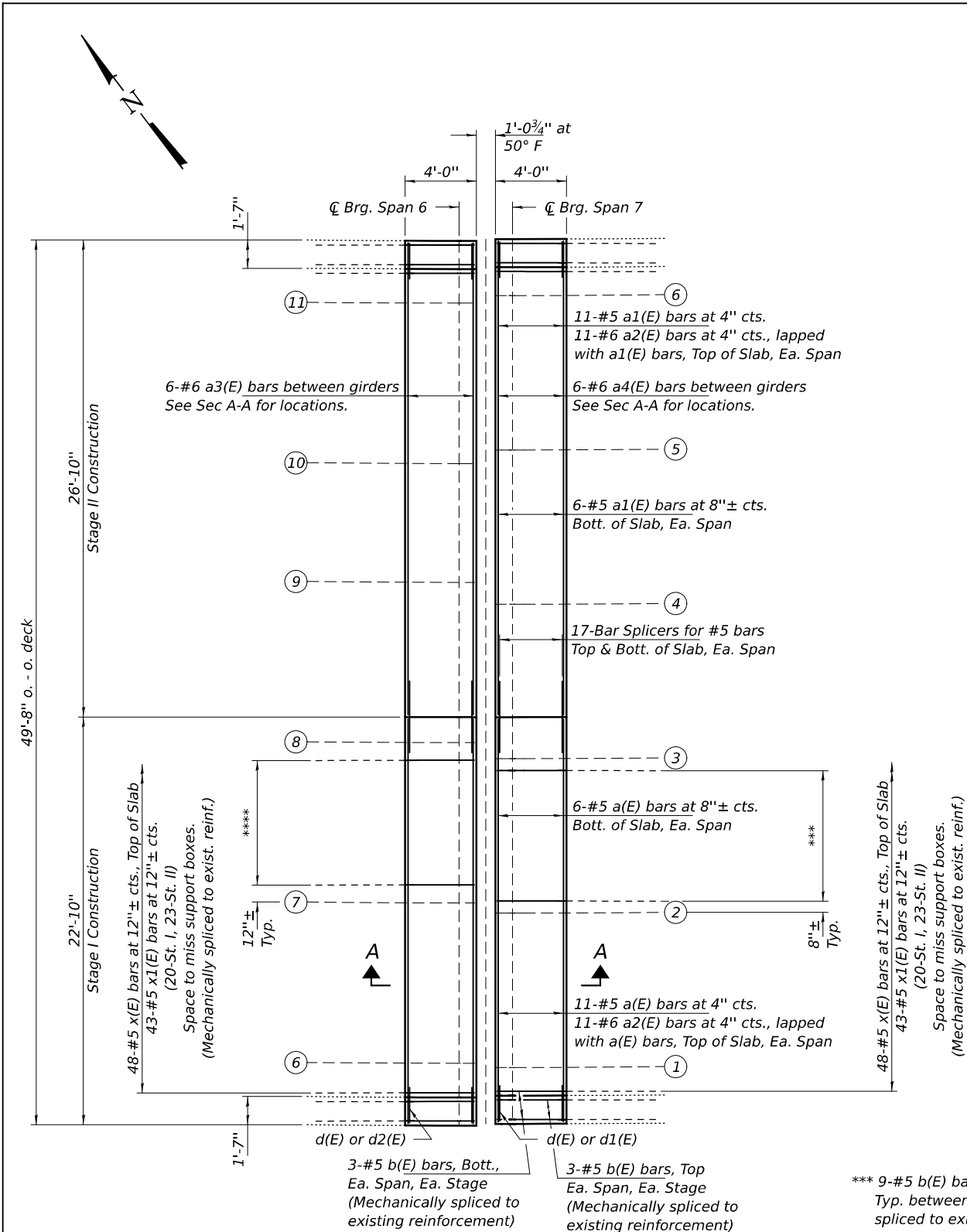
EXAMINED
ENGINEER OF STRUCTURAL SERVICES
PASSED
ENGINEER OF BRIDGES AND STRUCTURES

DATE - MAY 6, 2025
REVISED -
REVISED -

STATE OF ILLINOIS
DEPARTMENT OF TRANSPORTATION

F.A.I. RTE.	SECTION	COUNTY	TOTAL SHEETS	SHEET NO.
70	82-1B-2BJR-2	ST. CLAIR	21	13
CONTRACT NO. 76U24				
ILLINOIS FED. AID PROJECT				

MODEL: 76U24-014
FILE NAME: pw://jldel-pw/bentley.com:FWIDOT/Documents/IDOT O ces/Bureau of Bridges and Structures/OBM Projects/0820322/CADDData/Bridge/0820322B.dgn



* Cut existing reinforcement 6" minimum from Concrete Removal line to facilitate installation of Mechanical Splicers.

** Bars to be adjusted and/or cut in field to miss support boxes or webs.

Note:
See sheet 5 of 11 for additional details and bar bending diagrams.

DESIGNED -	VHV
CHECKED -	SMR
DRAWN -	daburdell
CHECKED -	VHV SMR

EXAMINED	ENGINEER OF STRUCTURAL SERVICES	DATE -	MAY 6, 2025
PASSED	Joey F. J. [Signature]	REVISED -	
	ENGINEER OF BRIDGES AND STRUCTURES	REVISED -	

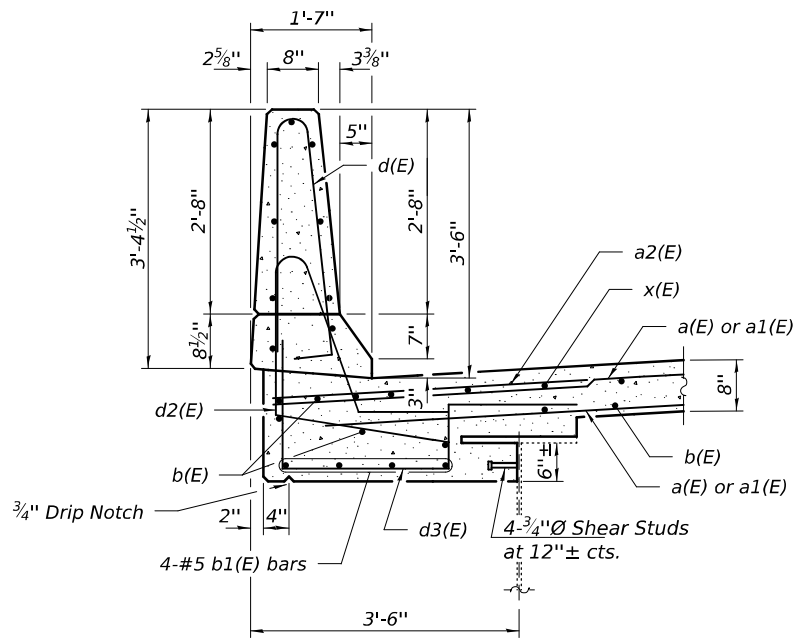
STATE OF ILLINOIS
DEPARTMENT OF TRANSPORTATION

JOINT REPLACEMENT DETAILS - PIER 6
SN 082-0322

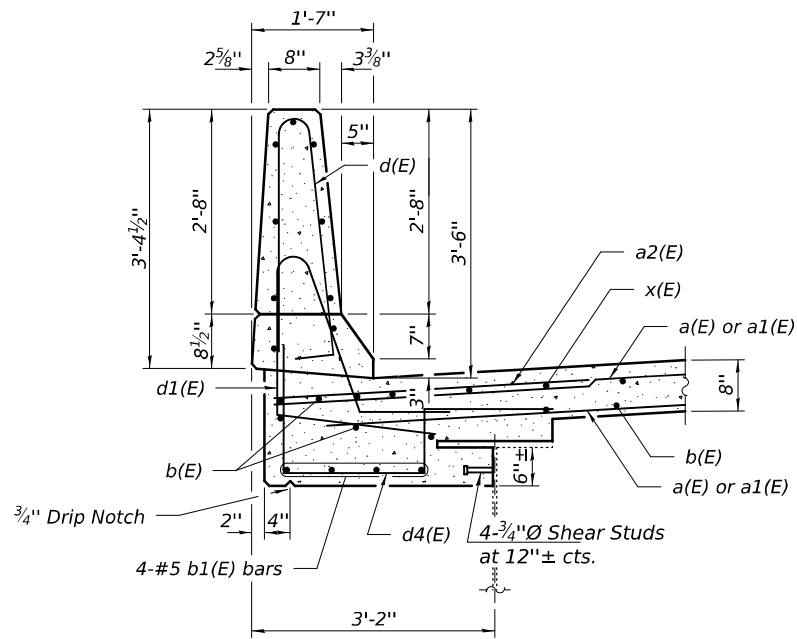
SHEET 4 OF 11 SHEETS

F.A.I. RTE.	SECTION	COUNTY	TOTAL SHEETS	SHEET NO.
70	82-1B-2BJR-2	ST. CLAIR	21	14
CONTRACT NO. 76U24				
ILLINOIS FED. AID PROJECT				

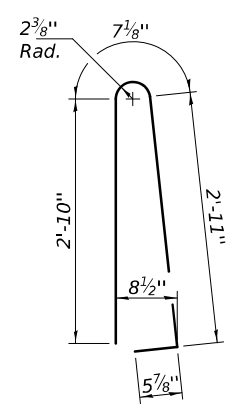
MODEL: 76U24-015
FILE NAME: pw://idol-pw/bentley.com:FWIDOT/Documents/IDOT O ces/Bureau of Bridges and Structures/OBM Projects/0820322/CADDData/Bridge/0820322B.dgn



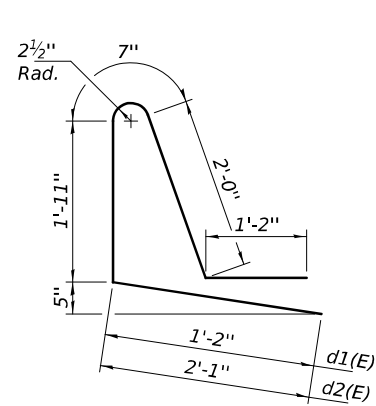
SEC B-B



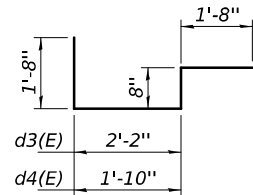
SEC C-C



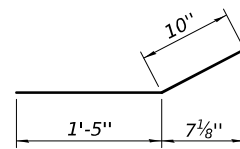
BAR d(E)



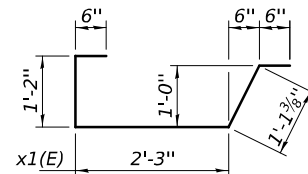
BARS d1(E) & d2(E)



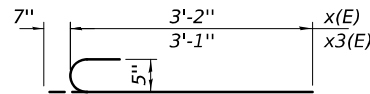
BARS d3(E) & d4(E)



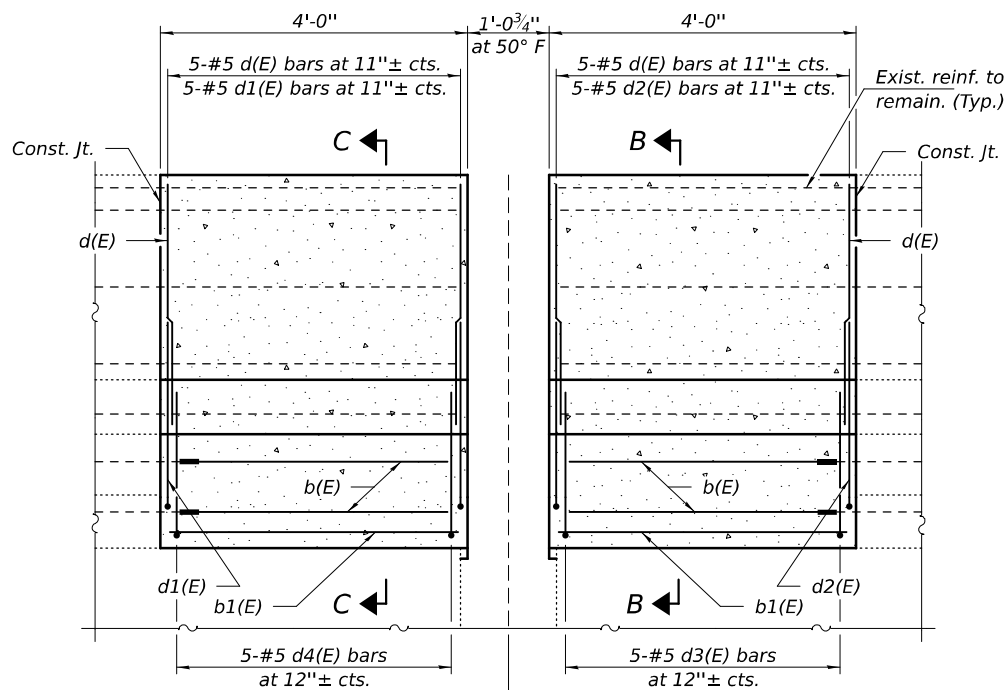
BAR x2(E)



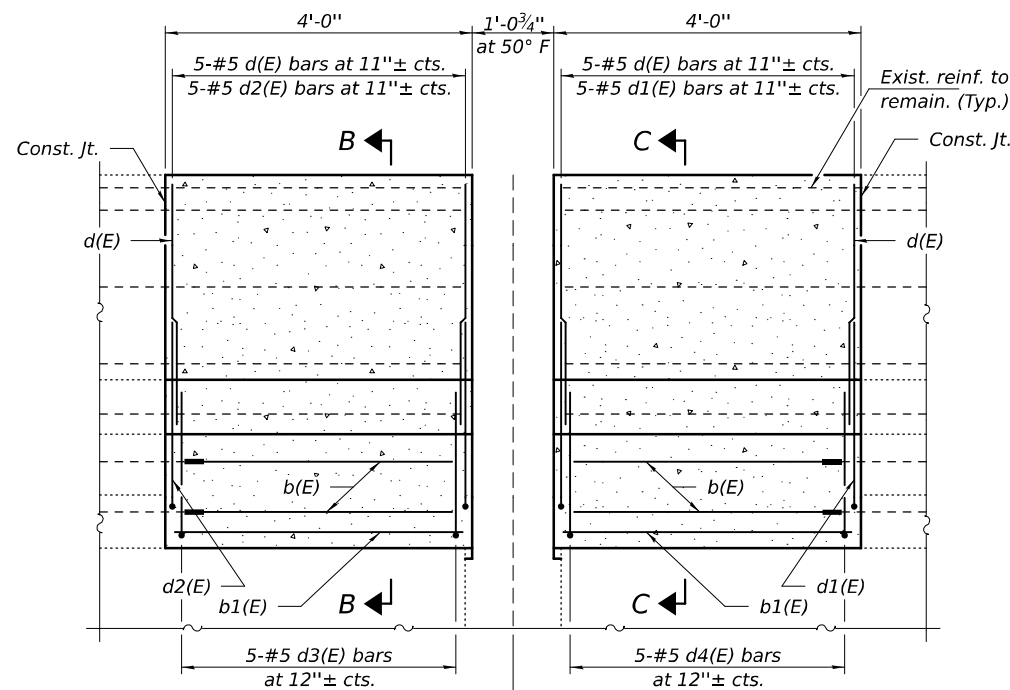
BAR x1(E)



BARS x(E) & x3(E)



OUTSIDE ELEVATION
(Looking South)



OUTSIDE ELEVATION
(Looking North)

BILL OF MATERIAL

Bar	No.	Size	Length	Shape
a(E)	38	#5	22'-6"	
a1(E)	38	#5	26'-6"	
a2(E)	44	#6	6'-6"	
a3(E)	30	#6	8'-8"	
a4(E)	30	#6	8'-4"	
b(E)	109	#5	3'-3"	
b1(E)	16	#5	3'-8"	
d(E)	20	#5	6'-10"	
d1(E)	10	#5	6'-10"	
d2(E)	10	#5	7'-9"	
d3(E)	10	#5	6'-2"	
d4(E)	10	#5	5'-10"	
x(E)	96	#5	3'-9"	
x1(E)	86	#5	5'-7"	
x2(E)	100	#5	2'-3"	
Concrete Removal			Cu. Yd.	19.8
Concrete Superstructure			Cu. Yd.	24.0
Bar Splicers			Each	38
Mechanical Splicers			Each	291
Stud Shear Connectors			Each	16
Protective Coat			Sq. Yd.	44
Reinforcement Bars, Epoxy Coated			Pound	5100
Modular Expansion Joint - Swivel 9"			Foot	49

DESIGNED - VHV
CHECKED - SMR
DRAWN - daburdell
CHECKED - VHV SMR

EXAMINED
PASSED
ENGINEER OF STRUCTURAL SERVICES
ENGINEER OF BRIDGES AND STRUCTURES

DATE - MAY 6, 2025
REVISED -
REVISED -

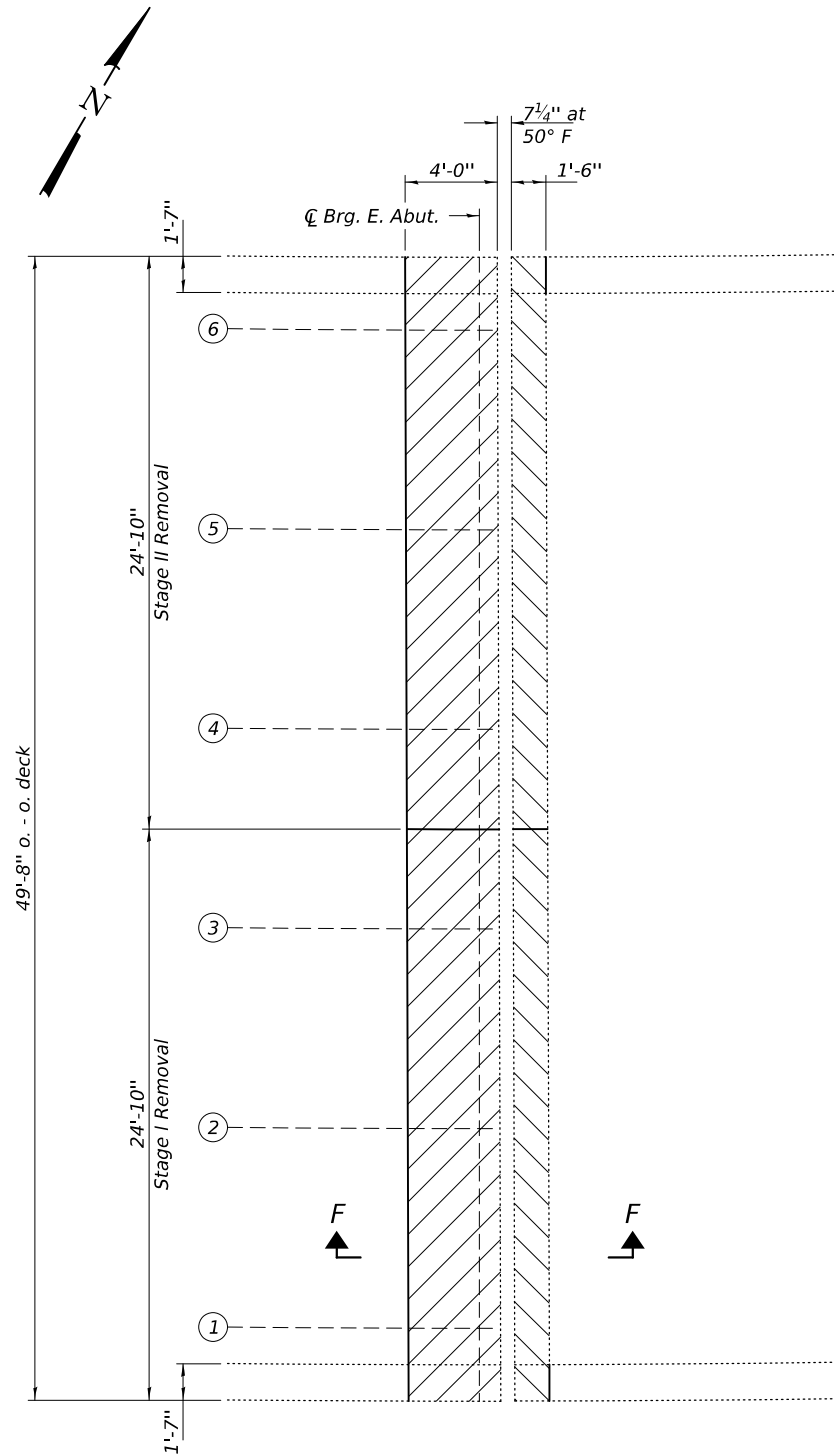
STATE OF ILLINOIS
DEPARTMENT OF TRANSPORTATION

JOINT REPLACEMENT DETAILS - PIER 6
SN 082-0322

SHEET 5 OF 11 SHEETS

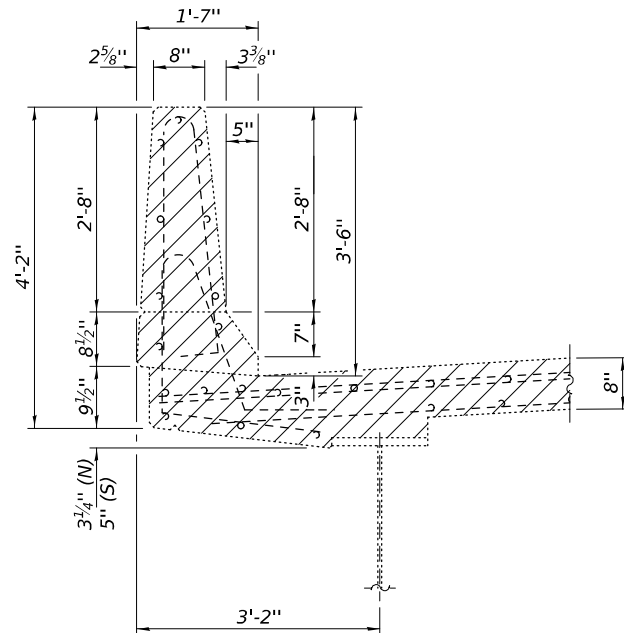
F.A.I. RTE. SECTION COUNTY TOTAL SHEETS SHEET NO.
70 82-1B-2BJR-2 ST. CLAIR 21 15
CONTRACT NO. 76U24
ILLINOIS FED. AID PROJECT

MODEL: 76U24+018
FILE NAME: pw:\jldot-pw\benley.com\FWIDOT\Documents\IDOT O ces\Bureau of Bridges and Structures\OBM Projects\0820322\CADDData\Bridge\0820322B.dgn

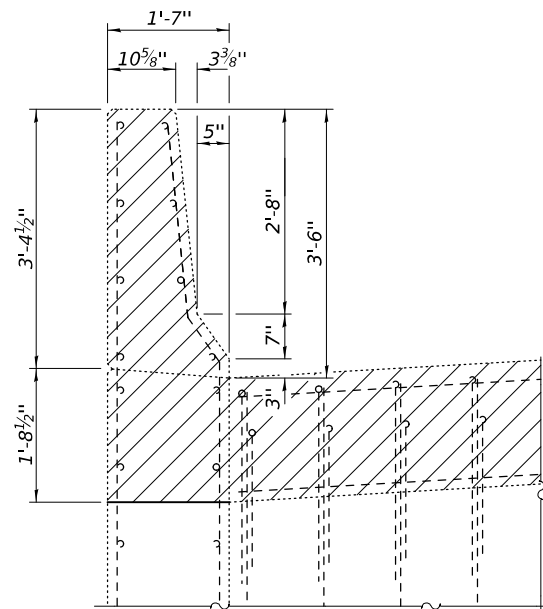


CONCRETE REMOVAL DETAILS

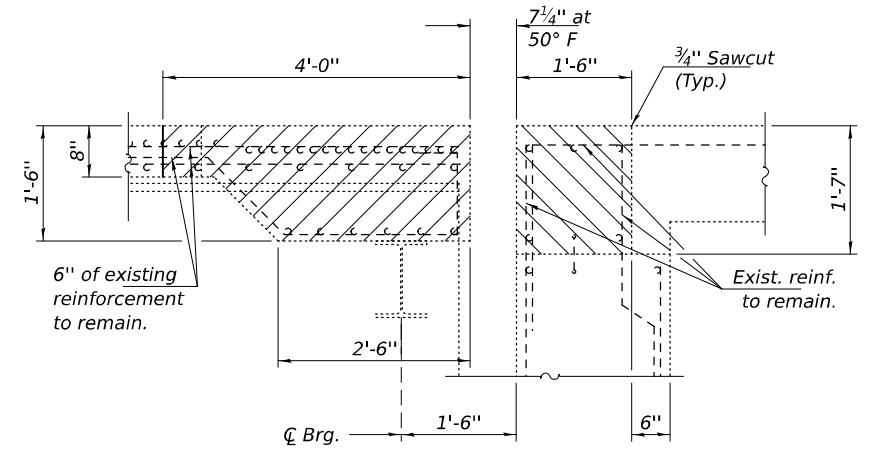
Notes:
Hatched areas indicate Concrete Removal.
Cost of existing modular joint removal is
included with Concrete Removal.



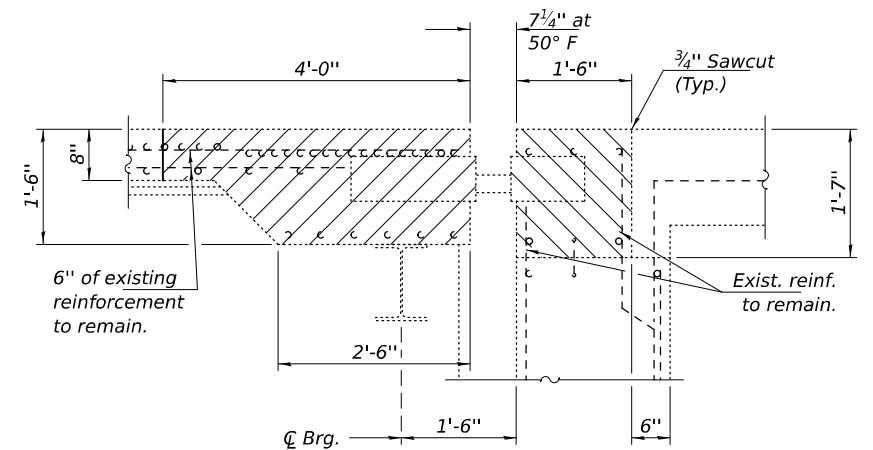
SEC G-G



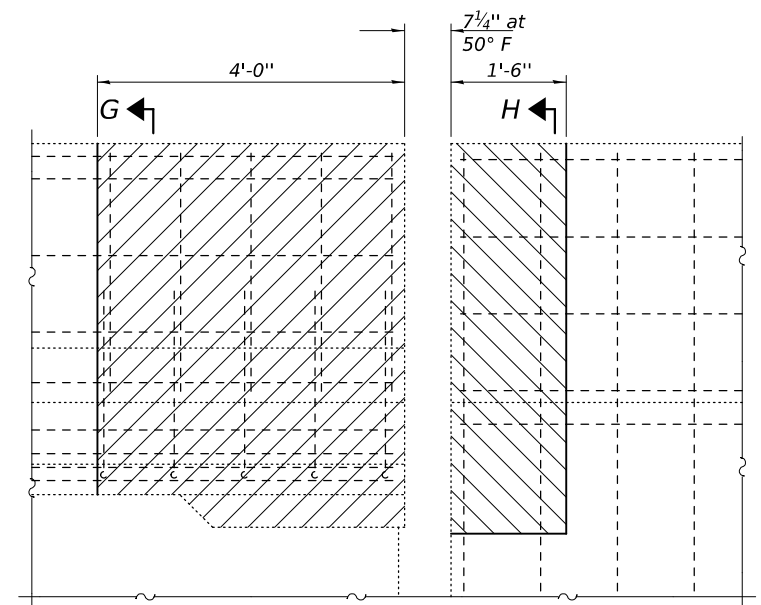
SEC H-H



SEC F-F (Btwn. Support Boxes)



SEC F-F (At Support Box)



OUTSIDE ELEVATION (Looking North)

DESIGNED -	VHV
CHECKED -	SMR
DRAWN -	daburdell
CHECKED -	VHV SMR

EXAMINED	ENGINEER OF STRUCTURAL SERVICES
PASSED	ENGINEER OF BRIDGES AND STRUCTURES

DATE -	MAY 6, 2025
REVISED -	
REVISED -	

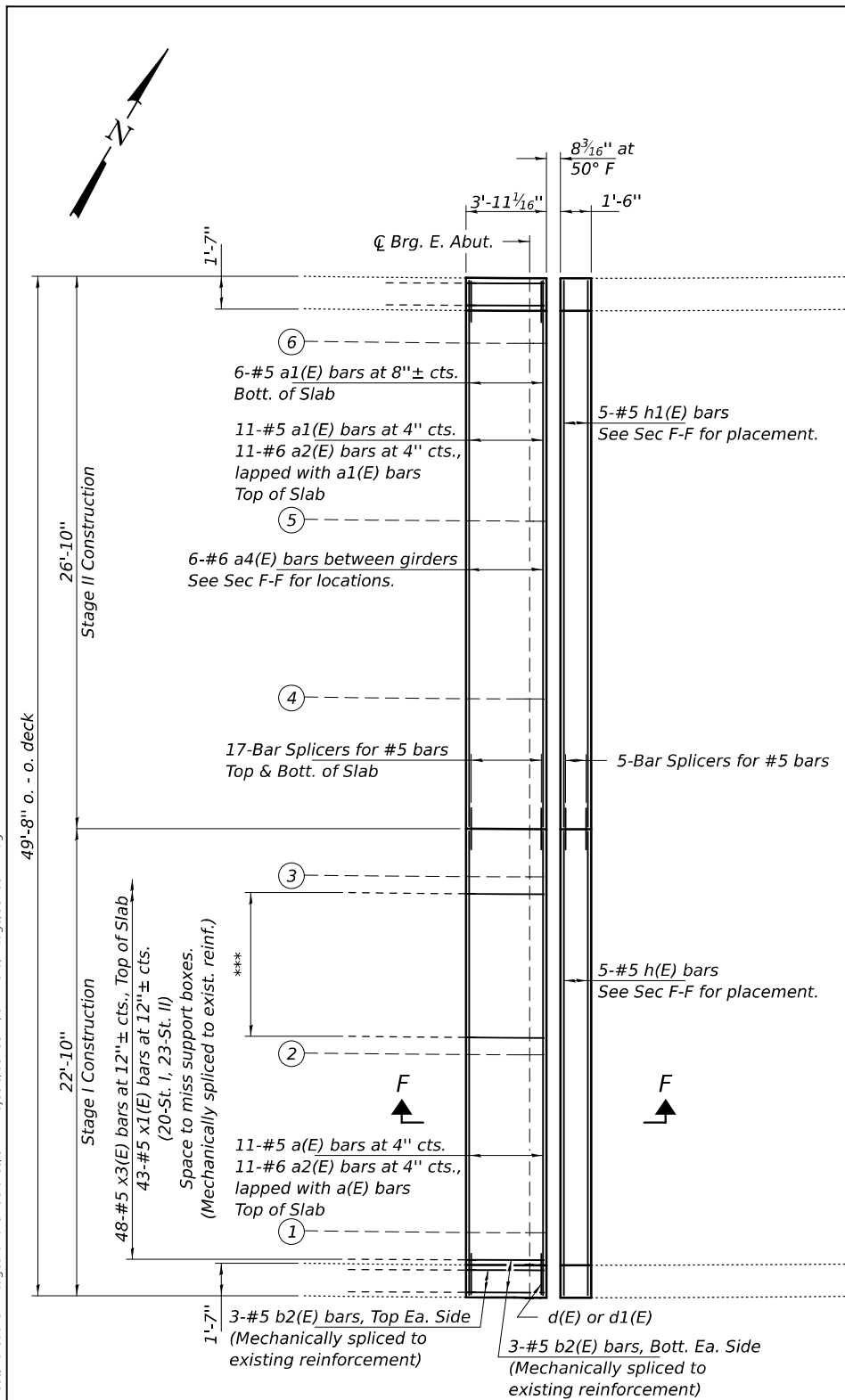
STATE OF ILLINOIS
DEPARTMENT OF TRANSPORTATION

JOINT REMOVAL DETAILS - EAST ABUTMENT
SN 082-0322

SHEET 8 OF 11 SHEETS

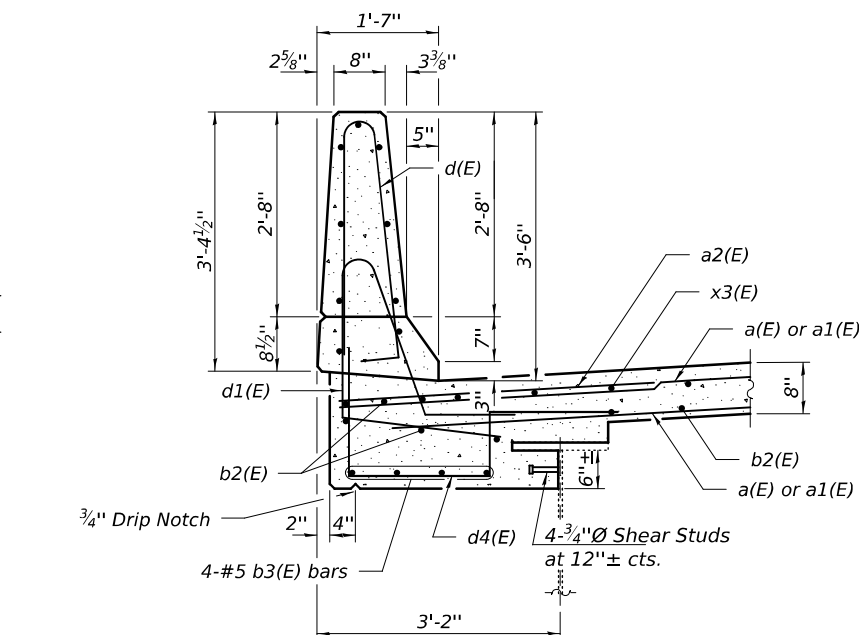
F.A.I. RTE.	SECTION	COUNTY	TOTAL SHEETS	SHEET NO.
70	82-1B-2BJR-2	ST. CLAIR	21	18
CONTRACT NO. 76U24				
ILLINOIS FED. AID PROJECT				

MODEL: 76U24-019
FILE NAME: pw:///jldel-pw/bentley.com:FW/IDOT/Documents/IDOT O ces/Bureau of Bridges and Structures/0820322/CADDData/Bridge/0820322B.dgn

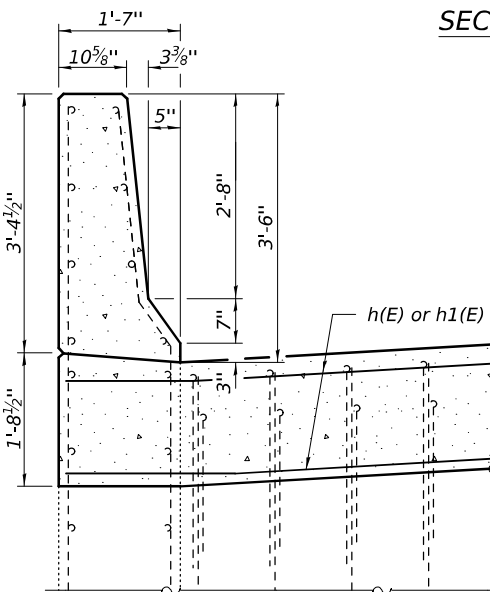


CONCRETE REPLACEMENT DETAILS

*** 9-#5 b2(E) bars at 11"± cts., Bott. Typ. between girders. Mechanically spliced to exist. reinf.



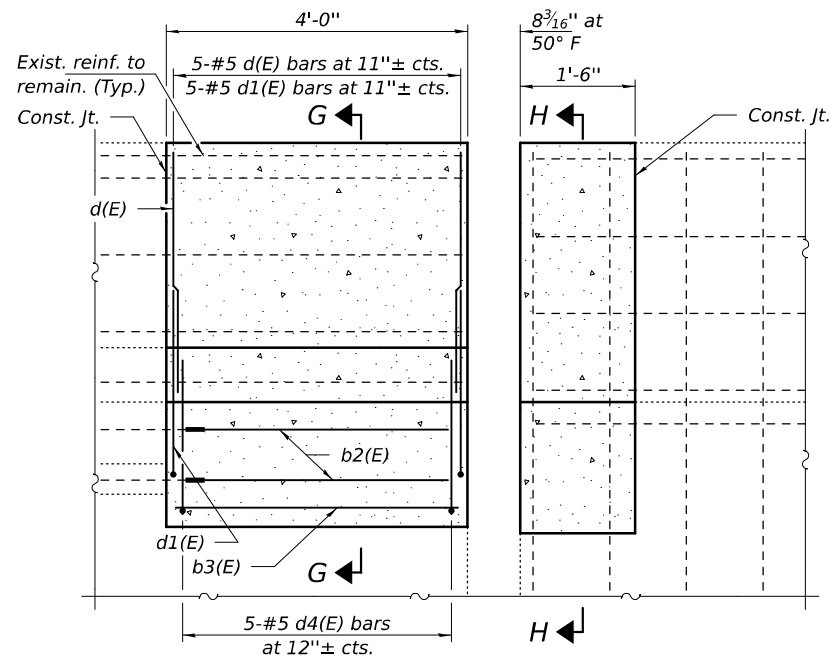
SEC G-G



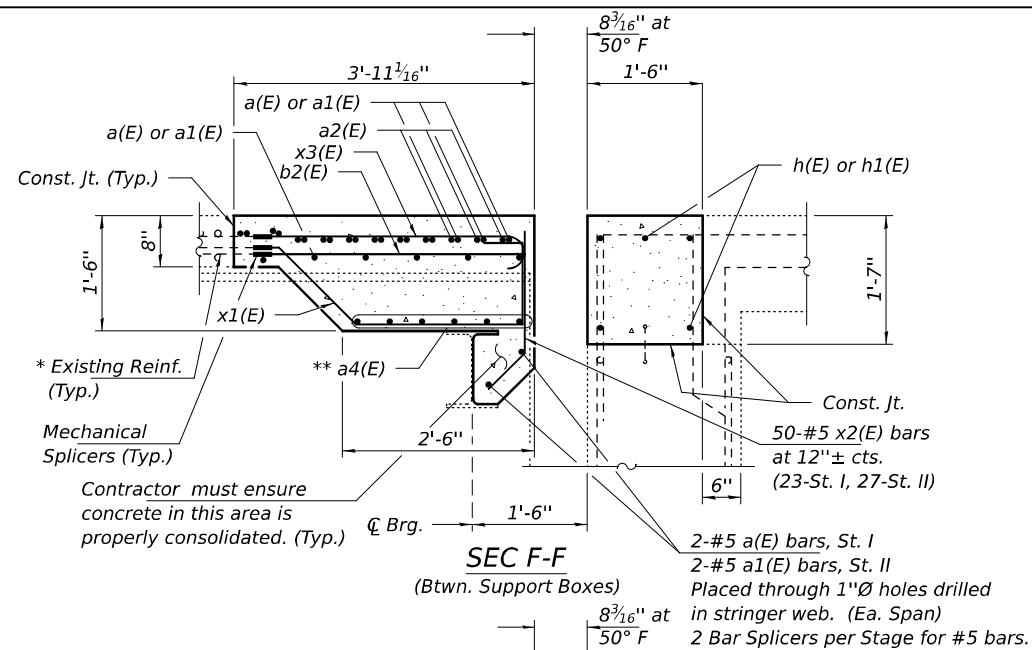
SEC H-H

Note:
See sheet 5 of 11 for bar bending diagrams.

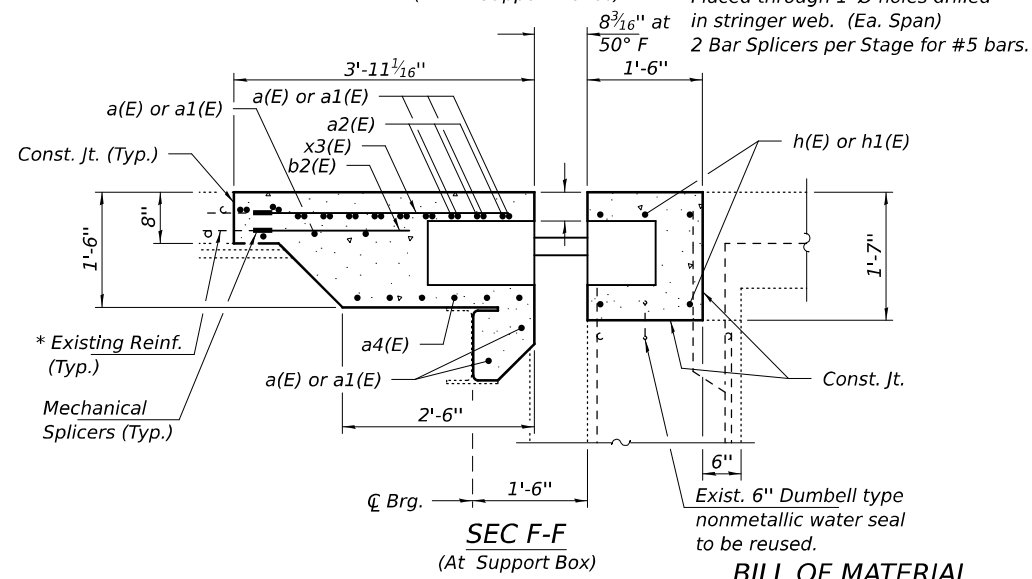
* Cut existing reinforcement 6" minimum from Concrete Removal line to facilitate installation of Mechanical Splicers.
** Bars to be adjusted and/or cut in field to miss support boxes or webs.



OUTSIDE ELEVATION (Looking North)



SEC F-F (Btwn. Support Boxes)



SEC F-F (At Support Box)

BILL OF MATERIAL

Bar	No.	Size	Length	Shape
a(E)	19	#5	22'-6"	—
a1(E)	19	#5	26'-6"	—
a2(E)	22	#6	6'-6"	—
a4(E)	30	#6	8'-4"	—
b2(E)	57	#5	3'-2"	—
b3(E)	8	#5	3'-7"	—
d(E)	10	#5	6'-10"	⌋
d1(E)	10	#5	6'-10"	⌋
d4(E)	10	#5	5'-10"	⌋
h(E)	5	#5	22'-6"	—
h1(E)	5	#5	26'-6"	—
x1(E)	43	#5	5'-7"	⌋
x2(E)	50	#5	2'-3"	⌋
x3(E)	48	#5	3'-9"	⌋
Concrete Removal			Cu. Yd.	14.6
Concrete Superstructure			Cu. Yd.	16.6
Bar Splicers			Each	24
Mechanical Splicers			Each	148
Stud Shear Connectors			Each	8
Protective Coat			Sq. Yd.	34.0
Reinforcement Bars, Epoxy Coated			Pound	2800
Modular Expansion Joint - Swivel 6"			Foot	49

DESIGNED -	VHV
CHECKED -	SMR
DRAWN -	daburdell
CHECKED -	VHV SMR

EXAMINED	ENGINEER OF STRUCTURAL SERVICES	DATE -	MAY 6, 2025
PASSED	ENGINEER OF BRIDGES AND STRUCTURES	REVISED -	

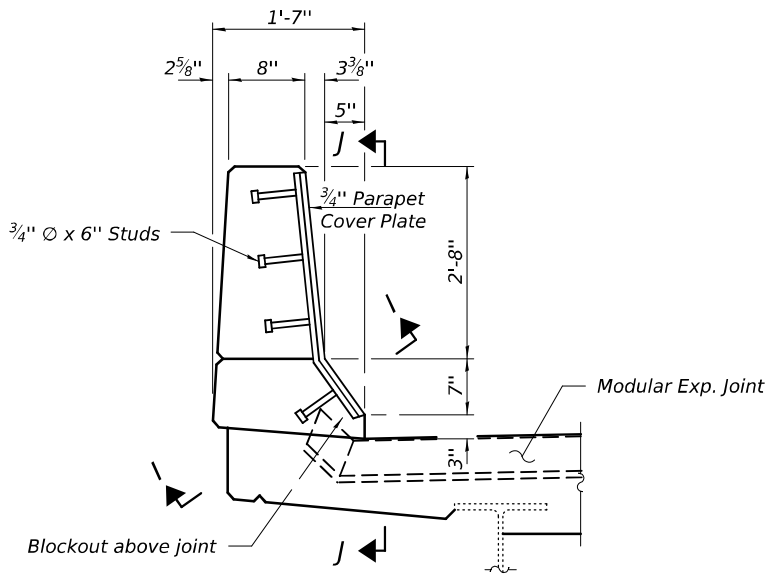
STATE OF ILLINOIS
DEPARTMENT OF TRANSPORTATION

JOINT REPLACEMENT DETAILS - EAST ABUTMENT
SN 082-0322

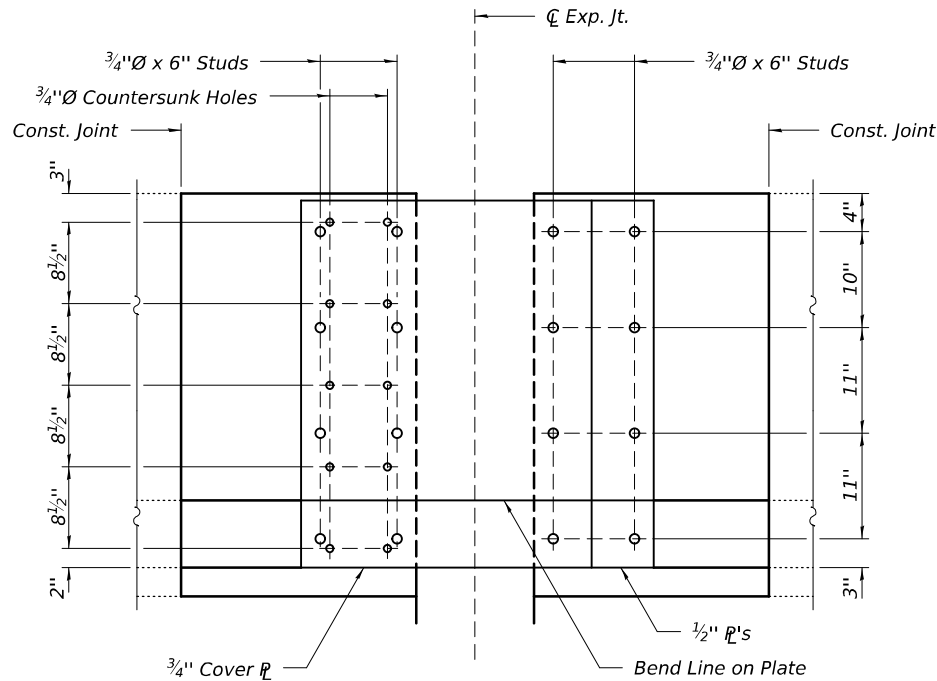
SHEET 9 OF 11 SHEETS

F.A.I. RTE.	SECTION	COUNTY	TOTAL SHEETS	SHEET NO.
70	82-1B-2BJR-2	ST. CLAIR	21	19
CONTRACT NO. 76U24				
ILLINOIS FED. AID PROJECT				

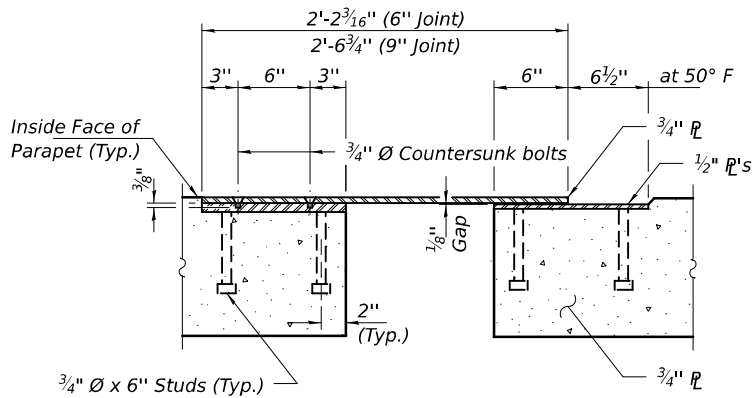
MODEL: 76U24-020
FILE NAME: p:\w\jldot-pw\Bentley.com\FW\DOT\Documents\IDOT O ces\Bureau of Bridges and Structures\OBM Projects\0820322\CADDData\Bridge\0820322B.dgn
5/9/2025 1:42:41 PM



SLIDING PLATE DETAIL



SEC J-J



SEC I-I

DESIGNED -	VHV
CHECKED -	SMR
DRAWN -	daburdell
CHECKED -	VHV SMR

EXAMINED	
PASSED	

DATE -	MAY 6, 2025
REVISED -	
REVISED -	

STATE OF ILLINOIS
DEPARTMENT OF TRANSPORTATION

SLIDING PLATE DETAILS
SN 082-0322

SHEET 10 OF 11 SHEETS


F.A.I. RTE.	SECTION	COUNTY	TOTAL SHEETS	SHEET NO.
70	82-1B-2BJR-2	ST. CLAIR	21	20
CONTRACT NO. 76U24				
ILLINOIS		FED. AID PROJECT		

MODEL: 76U24+021
FILE NAME: p:\w\illdot-pw\ibentley.com\FW\IDOT\Documents\IDOT O ces\Bureau of Bridges and Structures\OBM Projects\0820322\CADDData\Bridge\0820322B.dgn

BSD-1

5-15-2023

DESIGNED -	VHV
CHECKED -	SMR
DRAWN -	daburdell
CHECKED -	VHV SMR

EXAMINED	
PASSED	ENGINEER OF BRIDGES AND STRUCTURES

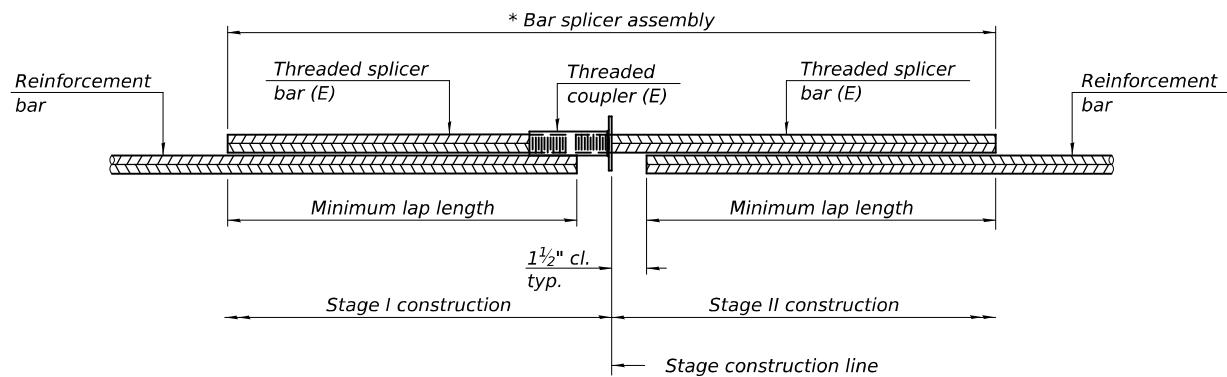
DATE -	MAY 6, 2025
REVISED -	
REVISED -	

STATE OF ILLINOIS
DEPARTMENT OF TRANSPORTATION

BAR SPLICER ASSEMBLY AND MECHANICAL SPLICER DETAILS
SN 082-0322

SHEET 11 OF 11 SHEETS

F.A.I. RTE.	SECTION	COUNTY	TOTAL SHEETS	SHEET NO.
70	82-1B-2BJR-2	ST. CLAIR	21	21
CONTRACT NO. 76U24				
		ILLINOIS	FED. AID PROJECT	



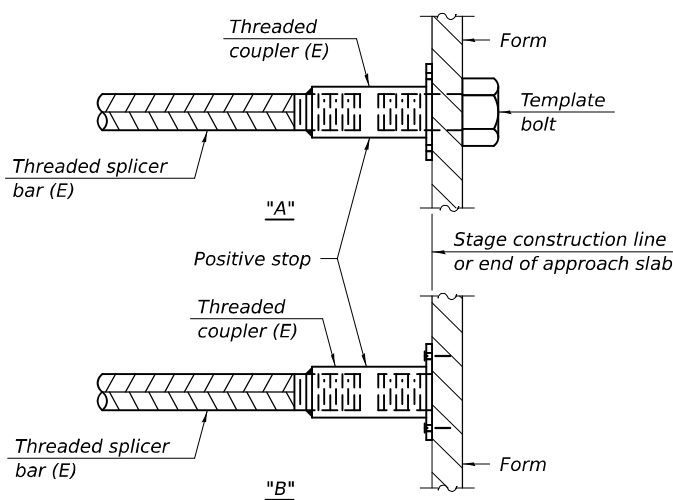
STANDARD BAR SPLICER ASSEMBLY PLAN

Only bar splicer assemblies as presented on the approved QPL list may be used.

Threaded splicer bar length = min. lap length + 1 1/2" + thread length

* Epoxy not required on Bar Splicer Assembly components used in conjunction with black bars.

Location	Bar size	No. assemblies required	Minimum lap length
Pier 6	#5	38	3'-10"
Pier 10	#5	38	3'-10"
E. Abut.	#5	24	3'-10"

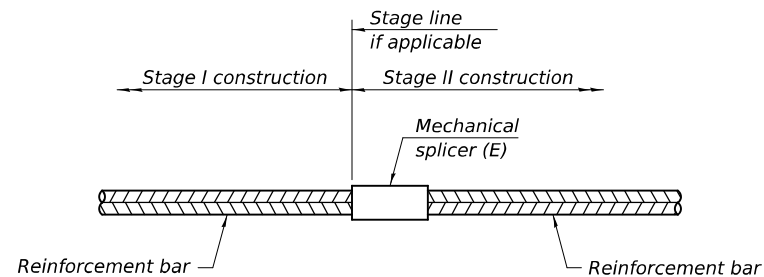


INSTALLATION AND SETTING METHODS

"A" : Set bar splicer assembly by means of a template bolt.

"B" : Set bar splicer assembly by nailing to wood forms or cementing to steel forms.

(E) : Indicates epoxy coating.



STANDARD MECHANICAL SPLICER

Location	Bar size	No. assemblies required
Pier 6	#5	291
Pier 10	#5	290
E. Abut.	#5	148

Notes:

Splicer bars shall be deformed with threaded ends and have a minimum 60 ksi yield strength.

All reinforcement shall be lapped and tied to the splicer bars.

Bar splicer assemblies shall be epoxy coated according to the requirements for reinforcement bars. See Section 508 of the Standard Specifications.

See approved list of bar splicer assemblies and mechanical splicers for alternatives.