

STATE OF ILLINOIS
DEPARTMENT OF TRANSPORTATION

F.A.P. RTE.	SECTION	COUNTY	TOTAL SHEETS	SHEET NO.
VAR	DIST 8 GUARDRAIL 2026-1	VARIOUS	12	1
		ILLINOIS	CONTRACT NO. 76R11	

D-98-106-24

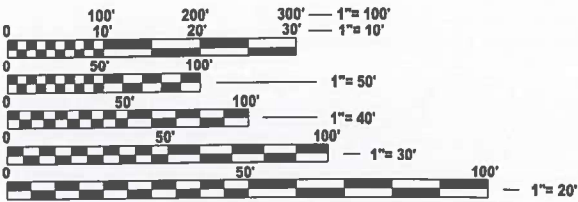
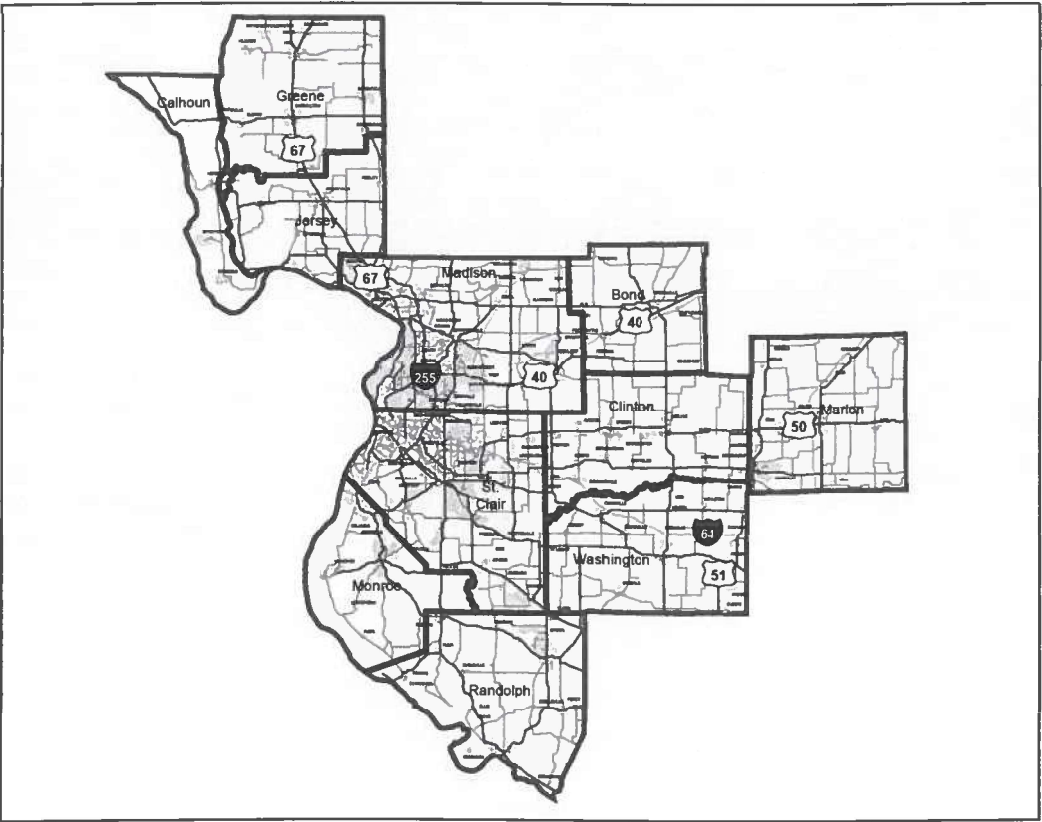
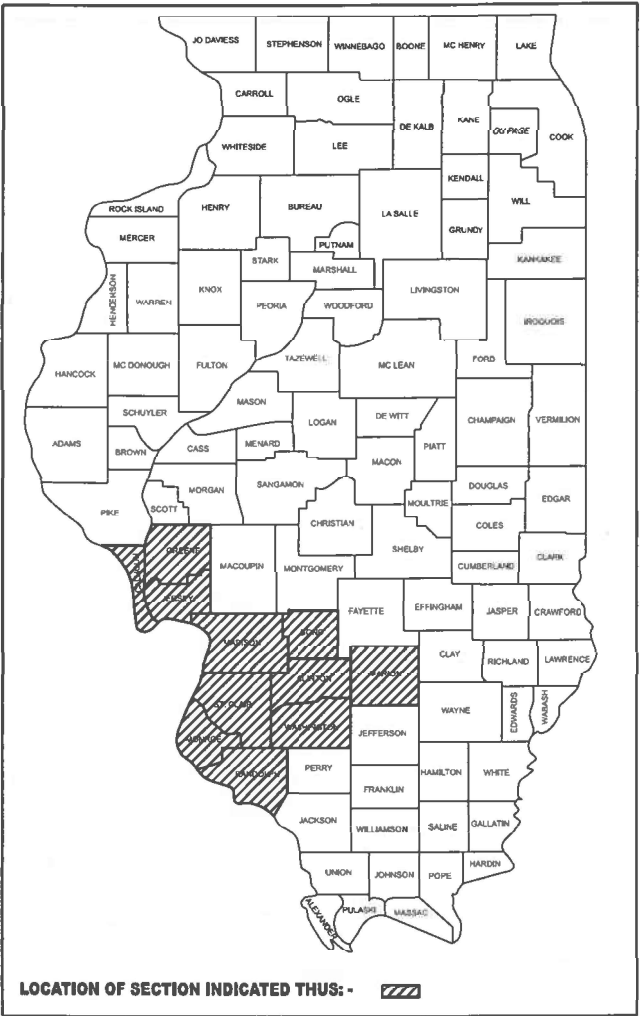
FOR INDEX OF SHEETS, SEE SHEET NO. 2

PROPOSED
HIGHWAY PLANS

VARIOUS ROUTES
SECTION DIST 8 GUARDRAIL 2026-1

GUARDRAIL & CABLE MEDIAN REPAIR
VARIOUS COUNTIES

C-98-194-24



FULL SIZE PLANS HAVE BEEN PREPARED USING STANDARD
ENGINEERING SCALES. REDUCED SIZED PLANS WILL NOT
CONFORM TO STANDARD SCALES. IN MAKING MEASUREMENTS
ON REDUCED PLANS, THE ABOVE SCALES MAY BE USED.

J.U.L.I.E.
JOINT UTILITY LOCATION INFORMATION FOR EXCAVATION
1-800-892-0123
OR 811

PROJECT ENGINEER - CHERYL KEPLAR
PROJECT MANAGER - BRANDON HUMPHREYS

NOT TO SCALE

CONTRACT NO. 76R11

STATE OF ILLINOIS
DEPARTMENT OF TRANSPORTATION

SUBMITTED May 05 20 25 HC
REGIONAL ENGINEER

May 9 20 25
ENGINEER OF DESIGN AND ENVIRONMENT

May 9 20 25
DIRECTOR OF HIGHWAYS PROJECT IMPLEMENTATION

PRINTED BY THE AUTHORITY
OF THE STATE OF ILLINOIS

MODEL: general notes (Sheet)
FILE NAME: c:\p\work\p\wid\delwis\std1067513\0876R11-sh-gennote.dgn

INDEX OF SHEETS

- 1. COVER SHEET
- 2. INDEX OF SHEETS, HIGHWAY STANDARDS, GENERAL NOTES, AND COMMITMENTS
- 3.-5. SUMMARY OF QUANTITIES
- 6. HIGH TENSION CABLE LOCATION MAP
- 7.-12. GUARDRAIL DETAILS

HIGHWAY STANDARDS

000001-08	701201-05
630001-13	701301-04
630101-11	701400-12
630301-09	701401-13
631006-08	701406-13
631011-10	701421-08
631026-06	701426-09
631031-18	701428-01
635001-02	701456-05
636001-02	701501-06
701001-02	701502-09
701006-05	701601-09
701011-04	701602-10
701101-05	701606-10
701106-02	701701-10
	701901-10

GENERAL NOTES

- 1. BEFORE ORDERING THE IMPACT ATTENUATORS, THE CONTRACTOR MUST CONTACT THE OPERATIONS FIELD ENGINEER TO RECEIVE APPROVAL OF THE PROPOSED INSTALLATION.
- 2. ALL WORK IS TO BE REPLACED IN KIND OR AS INDICATED ON THE CONTRACT PLANS AND PROVISIONS.
- 3. NO MATERIAL SHALL BE LEFT ON OR NEAR THE ROADWAY DURING NON-WORKING HOURS.
- 4. ANY NECESSARY TRAFFIC CONTROL WILL BE PROVIDED BY THE CONTRACTOR; APPROPRIATE STANDARDS ARE LISTED IN THE PLANS AND CONTRACT DOCUMENTS.
- 5. ALL REFLECTORS SHALL BE PLACED AT THE DISCRETION OF THE ENGINEER. COST OF REFLECTORS TO BE INCLUDED IN THE GUARDRAIL PAY ITEMS.
- 6. WHEN NO WORK IS BEING PERFORMED, THE FLAGGERS WILL NOT BE REQUIRED. IF THE FLAGGERS ARE NOT PRESENT, THE FLAGGER SIGNS SHALL BE REMOVED OR COVERED.
- 7. PRIOR TO ORDERING ANY MATERIALS, THE CONTRACTOR SHALL CONFIRM THE TYPES AND SPECIFIC MANUFACTURER FOR THE GUARDRAIL AND CABLE REPAIRS REQUIRED.
- 8. 45 AND 55 MPH SIGNS ARE INCLUDED IN ALL INTERSTATE LANE CLOSURES. IF THE LANE CLOSURE DURATION IS LESS THAN 4 HOURS, THE 45 AND 55 MPH SIGNS ARE NOT REQUIRED.
- 9. NO OVERNIGHT LANE CLOSURES WILL BE ALLOWED.
- 10. ARTICLE 701.20 OF THE STANDARD SPECIFICATIONS DISCUSSES AN ADJUSTED UNIT PRICE. NO ADJUSTMENTS SHALL BE MADE TO THE TRAFFIC CONTROL PAY ITEMS FOR THIS CONTRACT.
- 11. THE CONTRACTOR SHALL BE ADVISED THAT THE GUARDRAIL PAY ITEMS INCLUDED IN THE PLANS MAY BE USED TO REPLACE/REPAIR SPBGR AND TRAFFIC BARRIER TERMINALS FOR EITHER THE CURRENT MIDWEST STYLES AS SHOWN IN THE HIGHWAY STANDARDS OR SPBGR AND TRAFFIC BARRIER TERMINALS INSTALLED PRIOR TO JANUARY 1, 2007 AS SHOWN IN THE PLAN DETAILS. NO ADDITIONAL COMPENSATION WILL BE ALLOWED FOR UTILIZING THE CURRENT MIDWEST STANDARDS.
- 12. THE DEPARTMENT STRONGLY ENCOURAGES THE PRIME CONTRACTOR AND THEIR SUB-CONTRACTORS TO HIRE MINORITY, WOMEN AND DISADVANTAGED INDIVIDUALS FROM ITS FEDERALLY FUNDED HIGHWAY CONSTRUCTION CAREERS TRAINING PROGRAM (HCCTP) TO HELP MEET WORKFORCE AND TRAINEE GOALS. THIS PROGRAM IS TRAINING MINORITIES, WOMEN AND DISADVANTAGED INDIVIDUALS IN HIGHWAY CONSTRUCTION-RELATED SKILLS, E.G., MATH FOR THE TRADES, JOB READINESS, TECHNICAL SKILLS COURSEWORK (CARPENTRY, CONCRETE FLATWORK, BLUEPRINT READING, SITE PLANS, SITE WORK, TOOLS USE, ETC.) AND OSHA 10 HOUR CERTIFICATION, TO PREPARE THEM FOR A CAREER IN THE HIGHWAY CONSTRUCTION TRADES. GRADUATES ARE WELL-TRAINED AND READY TO BECOME PRODUCTIVE ENTRY-LEVEL CONSTRUCTION WORKERS. CONTACT THE DISTRICT EEO OFFICE AT 618-346-3360 AND OR THE HCCTP COORDINATOR AT 618-874-6528 TO LEARN MORE ABOUT THE PROGRAM AND FOR ASSISTANCE IN MEETING WORKFORCE AND TRAINEE GOALS.

COMMITMENTS
NONE

	USER NAME = Kevin.Lewis	DESIGNED -	REVISED -	STATE OF ILLINOIS DEPARTMENT OF TRANSPORTATION	INDEX OF SHEETS, HIGHWAY STANDARDS, GENERAL NOTES, AND COMMITMENTS			F.A.P RTE.	SECTION	COUNTY	TOTAL SHEETS	SHEET NO.
		DRAWN -	REVISED -					VAR	DIST 8 GUARDRAIL 2026-1	VARIOUS	12	2
		CHECKED -	REVISED -					CONTRACT NO. 76R11				
	PLOT DATE = 3/19/2025	DATE -	REVISED -		SCALE:	SHEET 1	OF 1	SHEETS	STA.	TO STA.	ILLINOIS FED. AID PROJECT	

MODEL: SOQ (Sheet)
FILE NAME: c:\p\work\pwltd\lewiskald1067513\0876R11-sh-SOQ.dgn

				100% STATE	
CODE NO.	ITEM	UNIT	TOTAL QUANTITY	CONSTRUCTION CODE	
				STATE & HTMCD	MCHS
				NONE	NONE
				0021	0021
				NONE	NONE
63000350	LONG-SPAN GUARDRAIL OVER CULVERT, 12 FT 6 IN SPAN	FOOT	300	300	
63100045	TRAFFIC BARRIER TERMINAL, TYPE 2	EACH	13	10	3
63100070	TRAFFIC BARRIER TERMINAL, TYPE 5	EACH	13	10	3
63100085	TRAFFIC BARRIER TERMINAL, TYPE 6	EACH	13	10	3
63100167	TRAFFIC BARRIER TERMINAL, TYPE 1 (SPECIAL) TANGENT	EACH	230	200	30
63100169	TRAFFIC BARRIER TERMINAL, TYPE 1 (SPECIAL) FLARED	EACH	95	75	20
64300260	IMPACT ATTENUATORS (FULLY REDIRECTIVE, NARROW), TEST LEVEL 3	EACH	8	5	3
64300370	IMPACT ATTENUATORS (FULLY REDIRECTIVE, WIDE), TEST LEVEL 3	EACH	8	5	3
67100100	MOBILIZATION	L SUM	1	0.5	0.5
72501000	TERMINAL MARKER - DIRECT APPLIED	EACH	170	110	60
78200005	GUARDRAIL REFLECTORS, TYPE A	EACH	50	50	
X0326468	MEDIAN CABLE	FOOT	1600	1600	
X6300210	GUARDRAIL BLOCKS	EACH	1200	700	500
X6300215	RAIL ELEMENT PLATES	EACH	900	600	300

	USER NAME = Kevin.Lewis	DESIGNED -	REVISED -	STATE OF ILLINOIS DEPARTMENT OF TRANSPORTATION	SUMMARY OF QUANTITIES			F.A.P RTE.	SECTION	COUNTY	TOTAL SHEETS	SHEET NO.
		DRAWN -	REVISED -					VAR	DIST 8 GUARDRAIL 2026-1	VARIOUS	12	3
		CHECKED -	REVISED -					CONTRACT NO. 76R11				
	PLOT DATE = 3/17/2025	DATE -	REVISED -		SCALE:	SHEET 1	OF 3 SHEETS	STA.	TO STA.	ILLINOIS FED. AID PROJECT		

MODEL: SQQ-1 [Sheet]
FILE NAME: c:\pw_work\pwidollewiskald1067513\0876R11-sh-SQQ.dgn

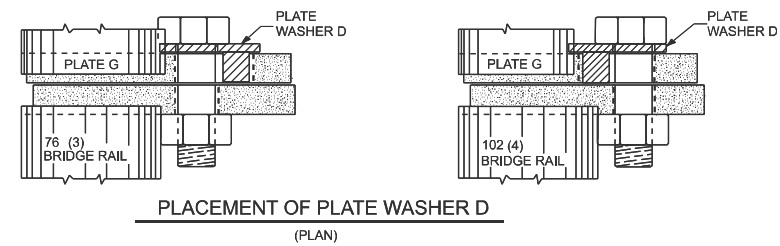
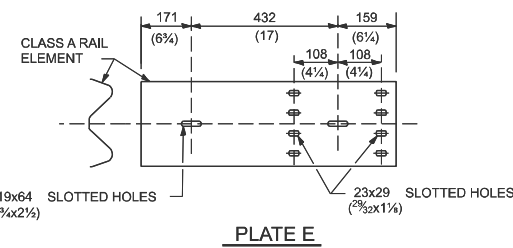
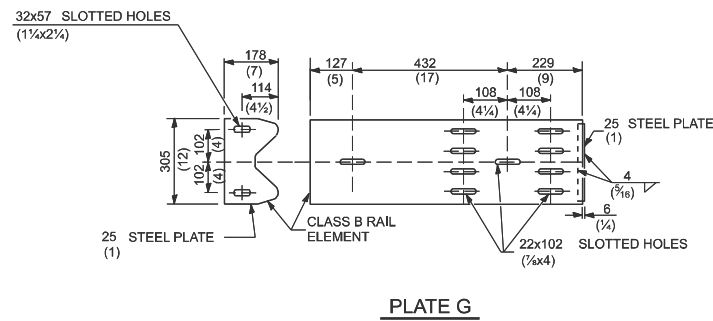
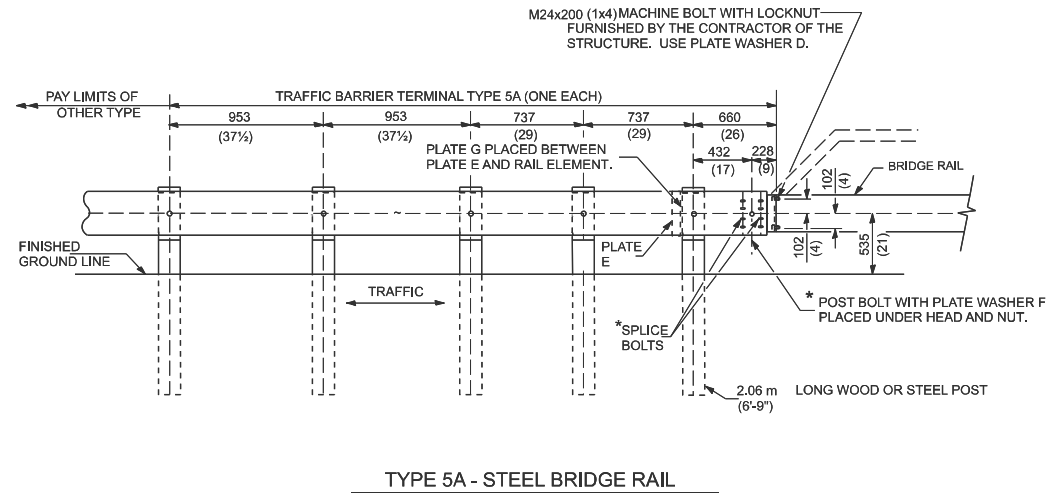
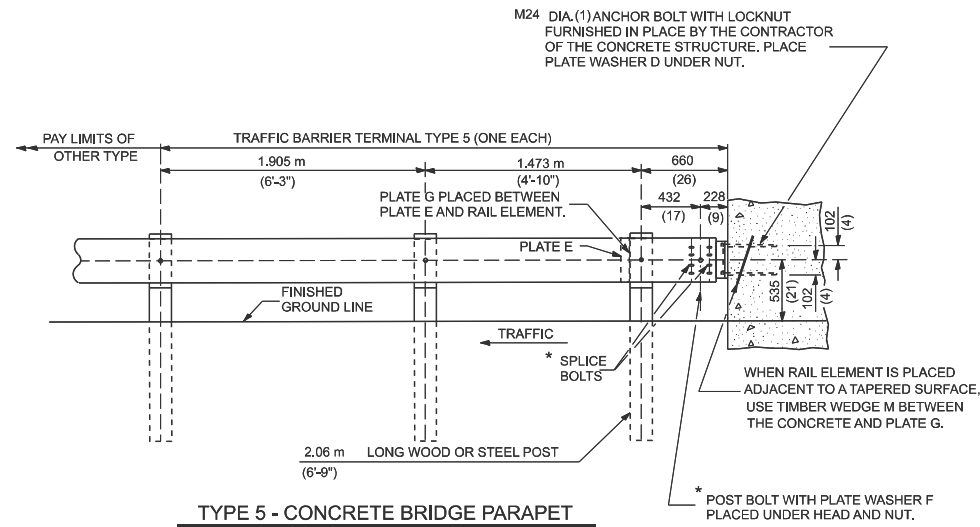
				100% STATE	
CODE NO.	ITEM	UNIT	TOTAL QUANTITY	CONSTRUCTION CODE	
				STATE & HTMCD	MCHS
				NONE	NONE
				0021	0021
				NONE	NONE
X6300217	RAIL ELEMENT PLATES (RADIUS)	EACH	80	50	30
X6300220	EXTRUDER HEAD	EACH	30	20	10
X6300225	SINGLE END SECTION	EACH	14	10	4
X6300231	STEEL POST, ATTACHED TO STRUCTURES	EACH	22	15	7
X6300236	STEEL POSTS 6'	EACH	1000	600	400
X6300239	STEEL POSTS 9'	EACH	500	300	200
X6310302	REPAIR TRAFFIC BARRIER TERMINAL, TYPE 1 SPECIAL (TANGENT)	EACH	125	75	50
X6310304	REPAIR TRAFFIC BARRIER TERMINAL, TYPE 1 SPECIAL (FLARED)	EACH	22	15	7
X6310306	REPAIR TRAFFIC BARRIER TERMINAL, TYPE 1 SPECIAL - POST	EACH	160	110	50
X6310310	REPAIR TRAFFIC BARRIER TERMINAL TYPE 1 SPECIAL - RAIL ELEMENT PLATE	EACH	65	50	15
X6310316	REPAIR TRAFFIC BARRIER TERMINAL, TYPE 2	EACH	16	10	6
X6310322	REPAIR TRAFFIC BARRIER TERMINAL, TYPE 3A	EACH	15	10	5
X6310326	REPAIR TRAFFIC BARRIER TERMINAL, TYPE 5	EACH	15	10	5
X6310330	REPAIR TRAFFIC BARRIER TERMINAL, TYPE 6	EACH	15	10	5

	USER NAME = Kevin.Lewis	DESIGNED -	REVISED -	STATE OF ILLINOIS DEPARTMENT OF TRANSPORTATION	SUMMARY OF QUANTITIES			F.A.P RTE.	SECTION	COUNTY	TOTAL SHEETS	SHEET NO.
		DRAWN -	REVISED -					VAR	DIST 8 GUARDRAIL 2026-1	VARIOUS	5	4
		CHECKED -	REVISED -					CONTRACT NO. 76R11				
	PLOT DATE = 1/9/2025	DATE -	REVISED -		SCALE:	SHEET 2	OF 3	SHEETS	STA.	TO STA.	ILLINOIS FED. AID PROJECT	

MODEL: SOQ-2 [Sheet]
FILE NAME: c:\pwy_work\pwytdotlewistad1067513\0876R11-sh-SOQ.dgn

				100% STATE	
CODE NO.	ITEM	UNIT	TOTAL QUANTITY	CONSTRUCTION CODE	
				STATE & HTMCD	MCHS
				NONE	NONE
				0021	0021
				NONE	NONE
X6331110	STEEL POSTS (SPECIAL)	EACH	16	10	6
X6360108	CABLE GUARD POST	EACH	1000	1000	
X6360109	HIGH TENSION CABLE ROAD GUARDPOST	EACH	1400	1400	
X6360111	HIGH TENSION CABLE SYSTEM MAINTENANCE	EACH	400	400	
X6430210	REMOVE AND REINSTALL IMPACT ATTENUATORS	EACH	185	125	60
X6440120	HIGH TENSION CABLE POST REPAIR	EACH	500	500	
X7011834	TRAFFIC CONTROL AND PROTECTION, CALL OUT WORK	EACH	400	300	100
X7011836	TRAFFIC CONTROL AND PROTECTION, FREEWAY/EXPRESSWAY, CALL OUT WORK	EACH	870	500	370
X8030110	LOCATING UNDERGROUND CABLE (SPECIAL)	EACH	9	5	4
Z0029662	REPLACE HIGH TENSION CABLE GUARDPOST FOUNDATION	EACH	650	650	

	USER NAME = Kevin.Lewis	DESIGNED -	REVISED -	STATE OF ILLINOIS DEPARTMENT OF TRANSPORTATION	SUMMARY OF QUANTITIES			F.A.P RTE.	SECTION	COUNTY	TOTAL SHEETS	SHEET NO.
		DRAWN -	REVISED -					VAR	DIST 8 GUARDRAIL 2026-1	VARIOUS	12	5
		CHECKED -	REVISED -					CONTRACT NO. 76R11				
	PLOT DATE = 3/17/2025	DATE -	REVISED -		SCALE:	SHEET 3	OF 3 SHEETS	STA.	TO STA.	ILLINOIS FED. AID PROJECT		

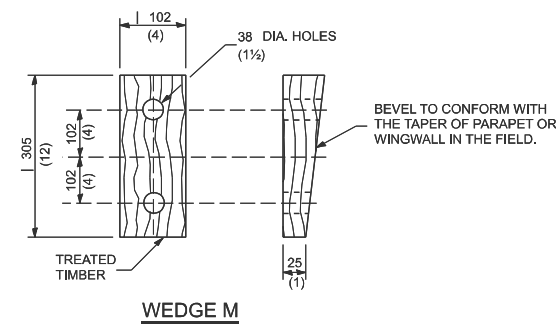
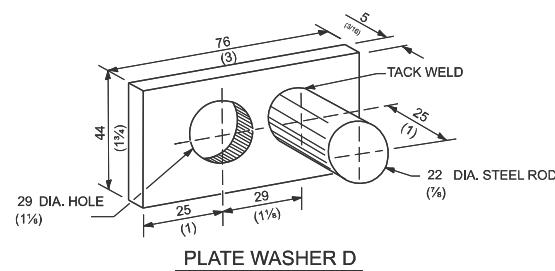


GENERAL NOTES

INSTALL PLATE WASHER D SO THAT THE 25 mm (1") PROJECTION FILLS THE REMAINDER OF THE SLOTTED HOLES IN THE 25 mm (1") END PLATE ON PLATE G AFTER THE M24 (1") DIA. BOLTS ARE IN PLACE.

* BOLTS SHALL BE PROVIDED WITH LOCKNUT OR DOUBLE NUT AND SHALL BE TIGHTENED ONLY TO A POINT THAT WILL ALLOW PLATE G TO BE FREE TO MOVE WHEN AN EXPANSION JOINT EXISTS BELOW THE CONNECTOR.

ALL DIMENSIONS ARE IN MILLIMETERS (INCHES) UNLESS OTHERWISE SHOWN.



THIS DETAIL IS APPLICABLE TO THE GUARDRAIL SYSTEM USED PRIOR TO JANUARY 1, 2007. FOR DETAILS ON THE MIDWEST GUARDRAIL SYSTEM, SEE STANDARD 630001.

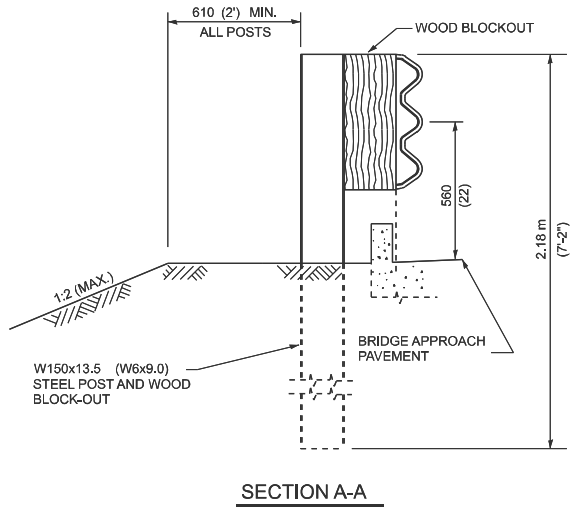
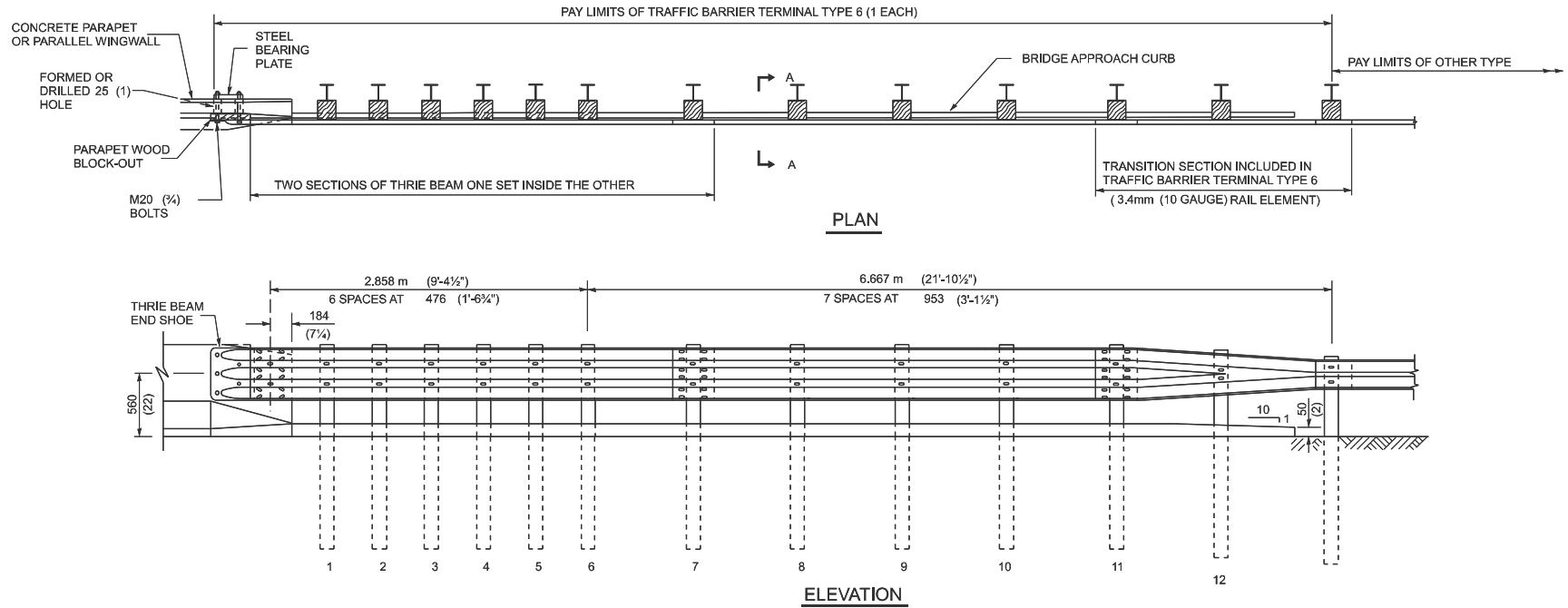
STATE OF ILLINOIS
DEPARTMENT OF TRANSPORTATION

TRAFFIC BARRIER TERMINAL
TYPE 5 & 5A

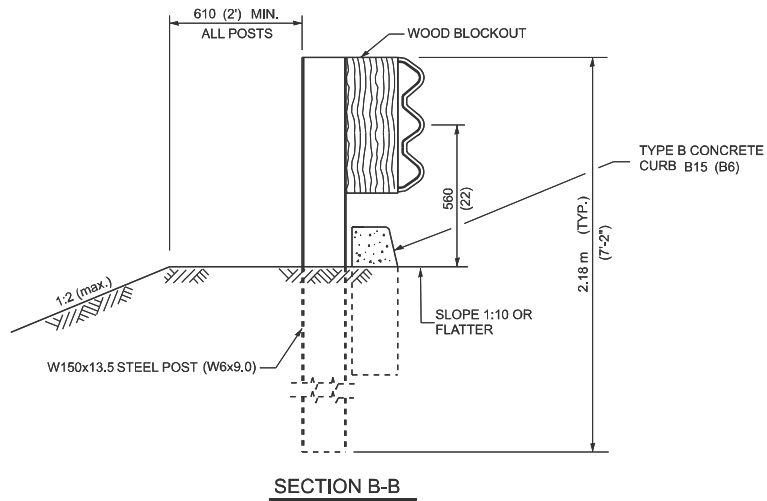
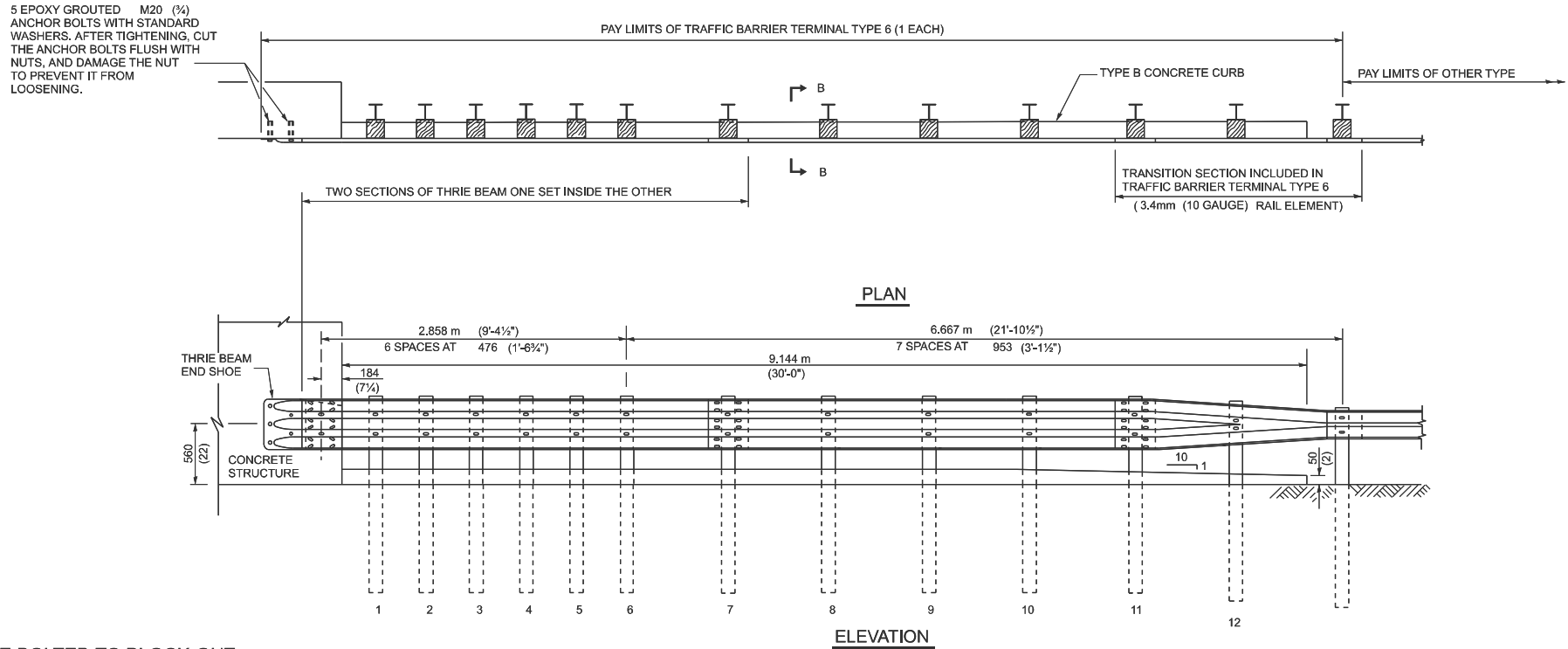
SCALE: SHEET 2 OF 7 SHEETS STA. TO STA.

F.A.P. RTE.	SECTION	COUNTY	TOTAL SHEETS	SHEET NO.
VAR	DIST 8 GUARDRAIL 2026-1	VARIOUS	12	7
CONTRACT NO. 76R11				
ILLINOIS FED. AID PROJECT				

PARAPET
OR WINGWALL



OTHER CONCRETE STRUCTURE



GENERAL NOTES

THRIE BEAM RAIL SHALL BE BOLTED TO BLOCK-OUT AT ALL POSTS.

ALL SLOPE RATIOS ARE EXPRESSED AS UNITS OF VERTICAL DISPLACEMENT TO UNITS OF HORIZONTAL DISPLACEMENT (V:H).

ALL DIMENSIONS ARE IN MILLIMETERS (INCHES) UNLESS OTHERWISE SHOWN.

THIS DETAIL IS APPLICABLE TO THE GUARDRAIL SYSTEM USED PRIOR TO JANUARY 1, 2007. FOR DETAILS ON THE MIDWEST GUARDRAIL SYSTEM, SEE STANDARD 630001.

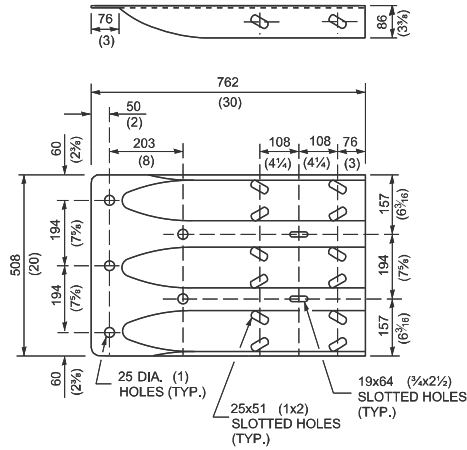
STATE OF ILLINOIS
DEPARTMENT OF TRANSPORTATION

TRAFFIC BARRIER
TERMINAL TYPE 6

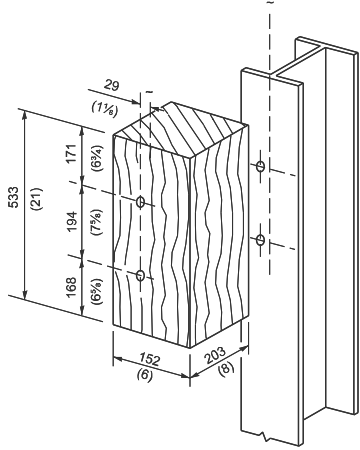
SCALE: SHEET 3 OF 7 SHEETS STA. TO STA.

F.A.P RTE.	SECTION	COUNTY	TOTAL SHEETS	SHEET NO.
VAR	DIST 8 GUARDRAIL 2026-1	VARIOUS	12	8
CONTRACT NO. 76R11				
ILLINOIS FED. AID PROJECT				

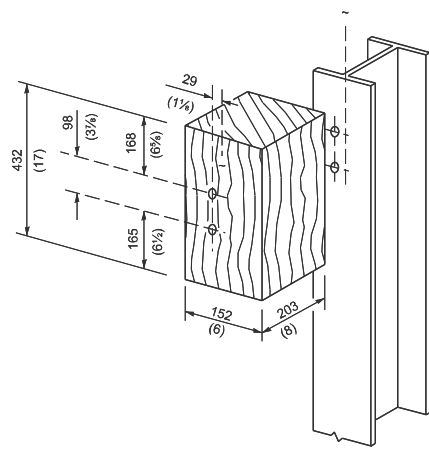
MODEL: Guardrail Details-2 (Sheet)
FILE NAME: c:\paw\work\paw\louis\kald1067513\0876R11-sh-cgdd.dgn.dgn



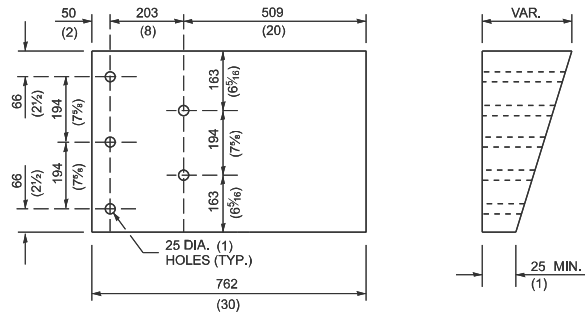
THRIE BEAM END SHOE DETAIL



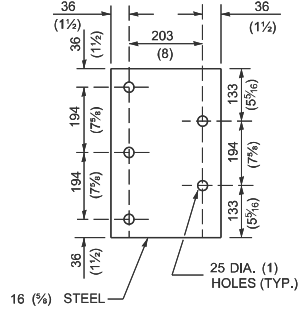
POSTS 1-11 WOOD BLOCKOUT DETAIL



POST 12 WOOD BLOCKOUT DETAIL



PARAPET WOOD BLOCK-OUT DETAIL



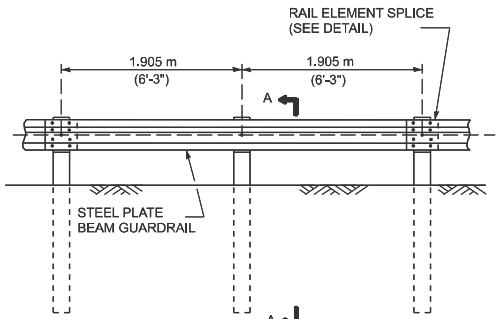
PARAPET STEEL BEARING PLATE DETAIL

(5 EACH INDIVIDUAL 125x125x16 (5x5x3/4) STEEL PLATES WITH CENTERED 25 (1) HOLES MAY BE SUBSTITUTED FOR THE PLATE SHOWN.)

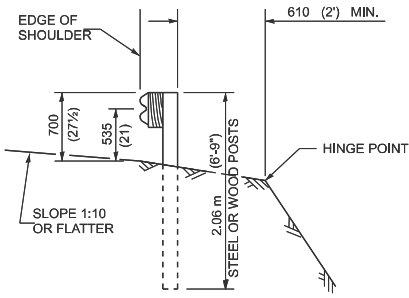
THIS DETAIL IS APPLICABLE TO THE GUARDRAIL SYSTEM USED PRIOR TO JANUARY 1, 2007. FOR DETAILS ON THE MIDWEST GUARDRAIL SYSTEM, SEE STANDARD 630001.

MODEL: Guardrail Details-3 [Sheet]
FILE NAME: c:\paw\work\paw\lewis\kald1067513\0876R11-sh-cgdd.dgn.dgn

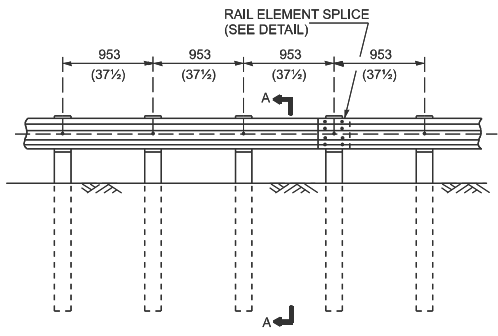
	USER NAME = Kevin.Lewis	DESIGNED -	REVISED -	STATE OF ILLINOIS DEPARTMENT OF TRANSPORTATION	TRAFFIC BARRIER TERMINAL, TYPE 6				F.A.P RTE.	SECTION		COUNTY	TOTAL SHEETS	SHEET NO.
		DRAWN -	REVISED -						VAR	DIST 8 GUARDRAIL 2026-1		VARIOUS	12	9
		CHECKED -	REVISED -						CONTRACT NO. 76R11					
	PLOT DATE = 1/9/2025	DATE -	REVISED -		SCALE:		SHEET 4	OF 7	SHEETS	STA.	TO STA.			
											ILLINOIS FED. AID PROJECT			



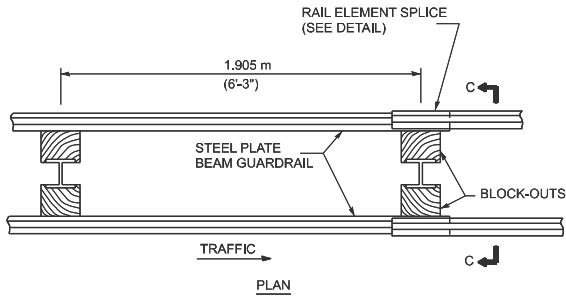
TYPE A
1.905 m (6'-3") TYPICAL POST SPACING



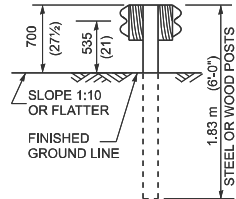
SECTION A-A



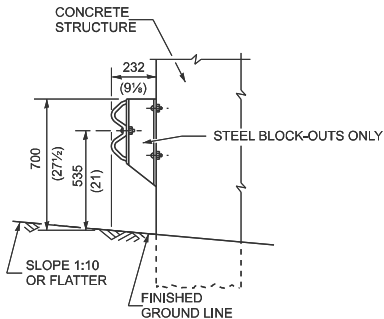
TYPE B
953 (37 1/2) CLOSED POST SPACING



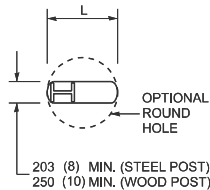
TYPE D
DOUBLE STEEL PLATE BEAM GUARDRAIL
1.905 m (6'-3") TYPICAL POST SPACING



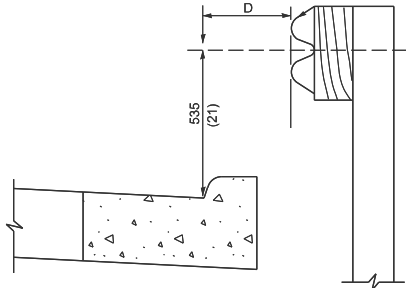
SECTION C-C



SECTION B-B

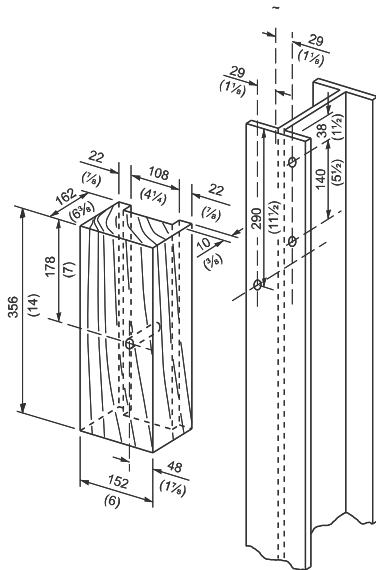


PLAN

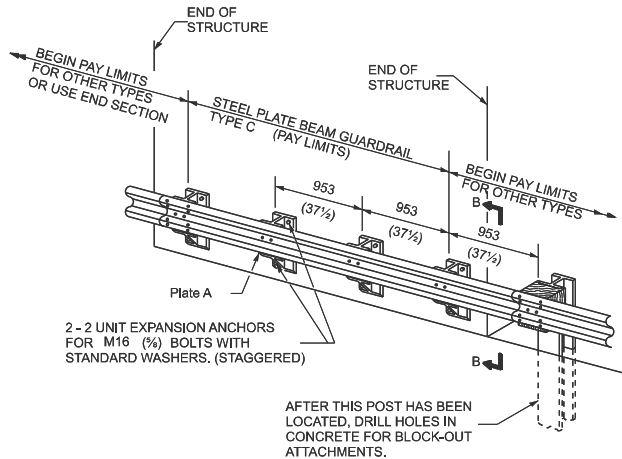


Note:
IF IT IS NECESSARY FOR D TO BE MORE THAN 300 (12) AND LESS THAN 3.0 m (10') CURB AND GUTTER (STD. 606001) SHALL BE USED IN FRONT OF AND IN ADVANCE OF THE GUARDRAIL.

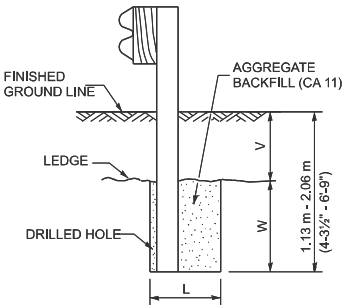
GUARDRAIL PLACED BEHIND CURB
(D = O DESIRABLE TO 300 (12) M)



WOOD BLOCK-OUT AND STEEL POST DETAILS

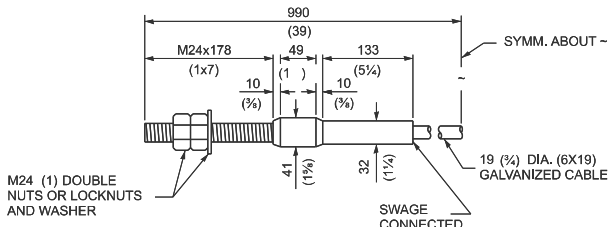


TYPE C
953 (37 1/2) BLOCK-OUT SPACING



ELEVATION

FOOTING FOR POST WHEN IMPERVIOUS MATERIAL IS ENCOUNTERED



CABLE ASSEMBLY
(18,100 kg (40,000 LBS.) MIN. BREAKING STRENGTH)
TIGHTEN TO TAUT TENSION.

GENERAL NOTES

ALL SLOPE RATIOS ARE EXPRESSED AS UNITS OF VERTICAL DISPLACEMENT TO UNITS OF HORIZONTAL DISPLACEMENT (V:H).

ALL DIMENSIONS ARE IN MILLIMETERS (INCHES) UNLESS OTHERWISE SHOWN.

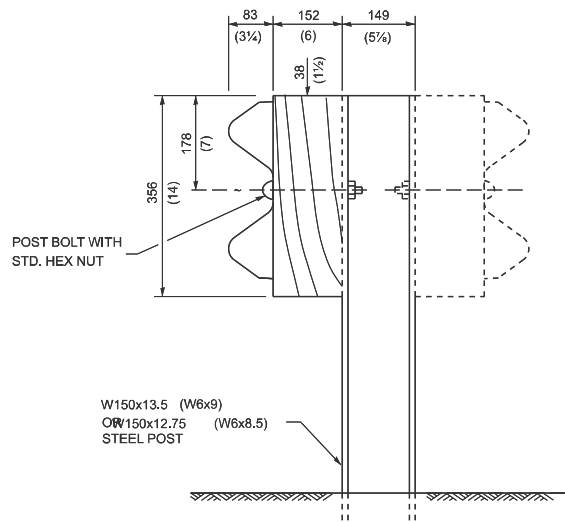
THE EXISTING STEEL POSTS MAY BE DRILLED TO MATCH THE BOLT PATTERN SHOWN HEREIN FOR THE WOOD BLOCK-OUT, OR A NEW STEEL POST SHALL BE PROVIDED.

**STATE OF ILLINOIS
DEPARTMENT OF TRANSPORTATION**

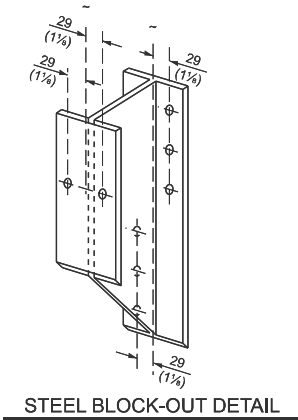
STEEL PLATE BEAM GUARDRAIL

SCALE: SHEET 5 OF 7 SHEETS STA. TO STA.

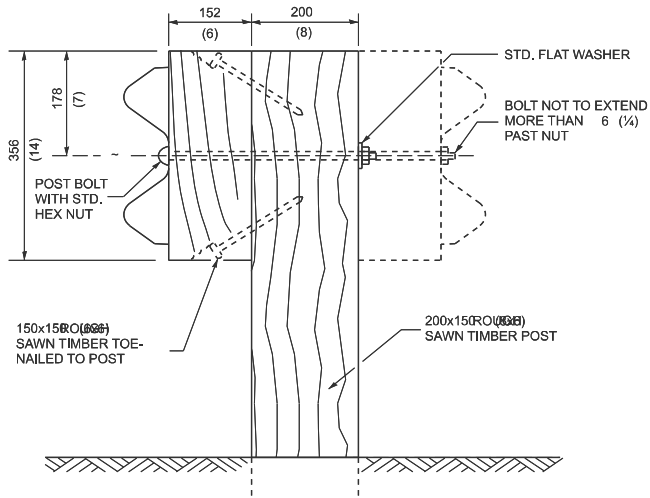
F.A.P RTE.	SECTION	COUNTY	TOTAL SHEETS	SHEET NO.
VAR	DIST 8 GUARDRAIL 2026-1	VARIOUS	12	10
CONTRACT NO. 76R11				
ILLINOIS FED. AID PROJECT				



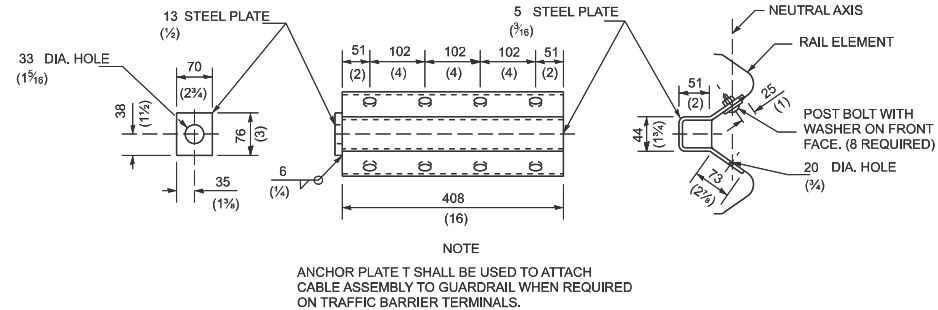
STEEL POST CONSTRUCTION



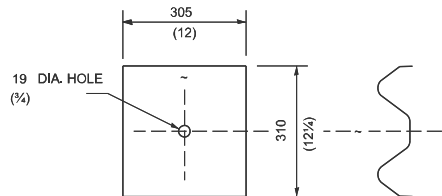
STEEL BLOCK-OUT DETAIL



WOOD POST CONSTRUCTION

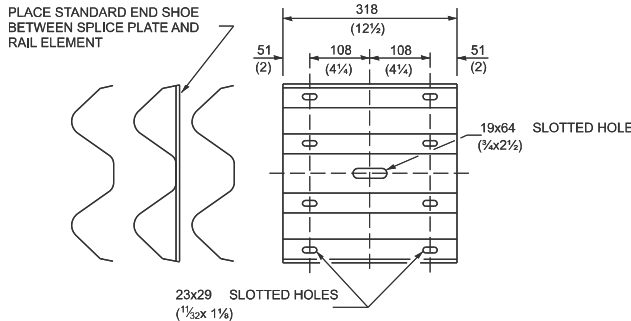


ANCHOR PLATE T DETAILS

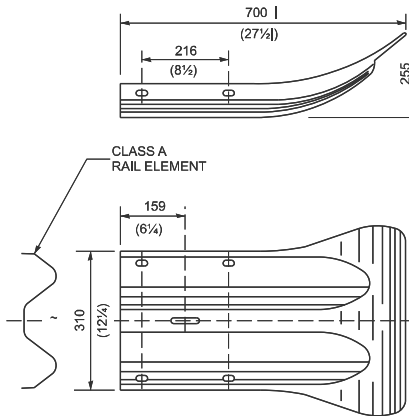


NOTE
PLATE A SHALL BE PLACED BETWEEN RAIL ELEMENT AND BLOCK-OUT AT NON-SPLICE MOUNTING POINTS ONLY WHEN STEEL BLOCK-OUTS ARE USED.

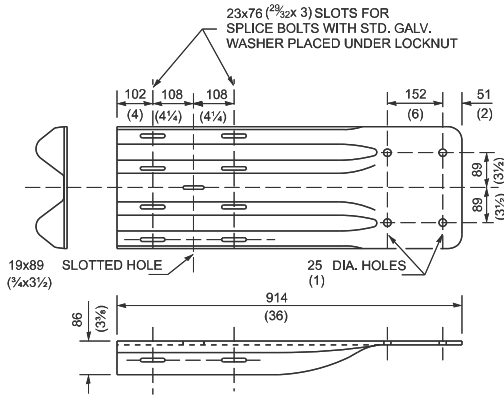
PLATE A



SPLICE PLATE

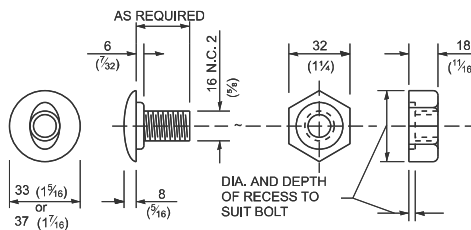


END SECTION

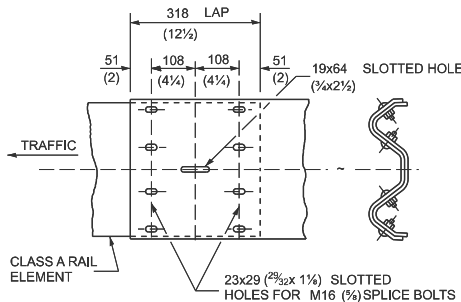


NOTE
WHEN END SHOE IS ATTACHED TO A BRIDGE PARAPET WHICH HAS AN EXPANSION JOINT, THE BOLTS SHALL BE PROVIDED WITH A LOCKNUT OR DOUBLE NUT AND SHALL BE TIGHTENED ONLY TO A POINT THAT WILL ALLOW GUARDRAIL MOVEMENT.
THE STANDARD END SHOE SHALL BE ATTACHED TO THE CONCRETE WITH PRE-DRILLED OR SELF-DRILLING ANCHOR BOLTS. THE ANCHOR CONE SHALL BE SET FLUSH WITH THE SURFACE OF THE CONCRETE.
EXTERNALLY THREADED STUDS PROTRUDING FROM THE SURFACE OF THE CONCRETE WILL NOT BE PERMITTED.

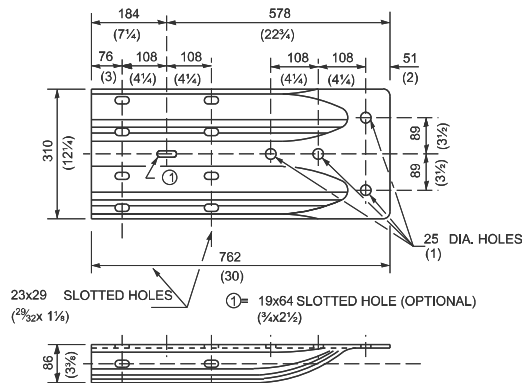
END SHOE



POST OR SPLICE BOLT & NUT



RAIL ELEMENT SPLICE



ALTERNATE END SHOE

THIS DETAIL IS APPLICABLE TO THE GUARDRAIL SYSTEM USED PRIOR TO JANUARY 1, 2007. FOR DETAILS ON THE MIDWEST GUARDRAIL SYSTEM, SEE STANDARD 630001.

MODEL: Guardrail Details-5 (Sheet)
FILE NAME: c:\paw_work\paw\louis\skald1067513\0876R11-sh-cpdd.dgn.dgn

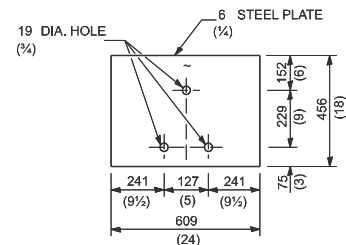
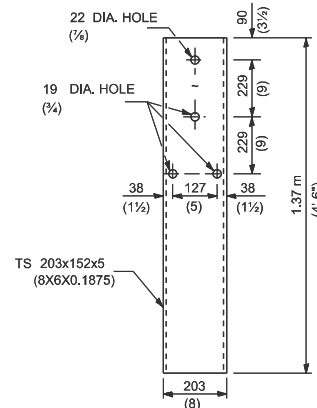
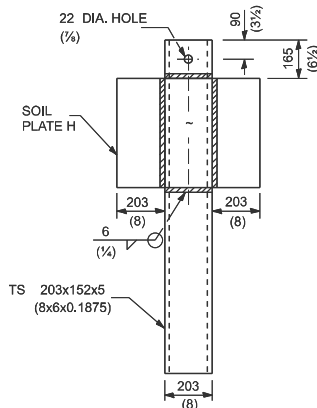
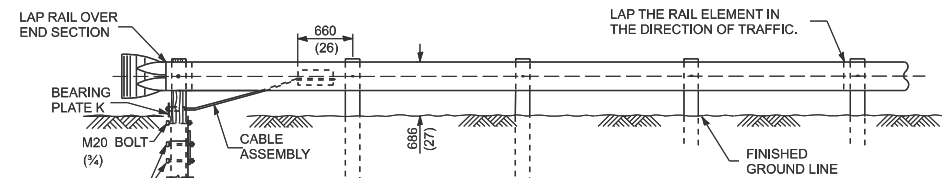
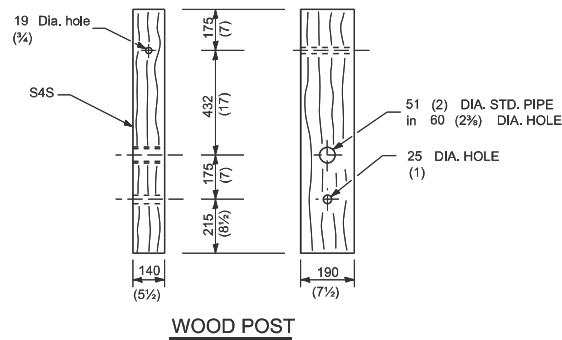
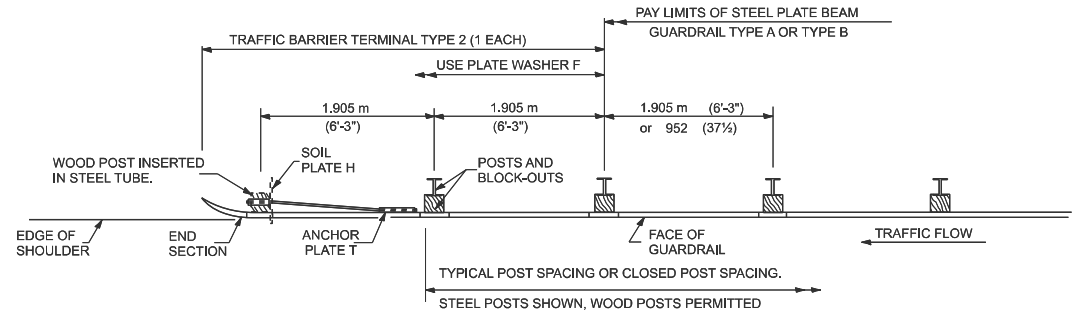
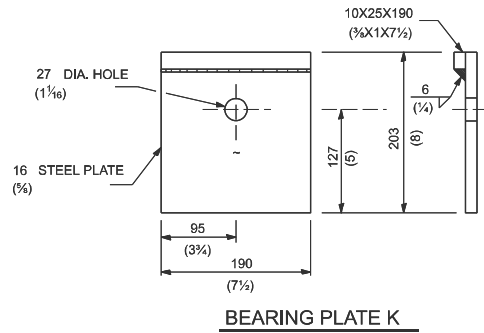
USER NAME = Kevin.Lewis	DESIGNED -	REVISED -
	DRAWN -	REVISED -
	CHECKED -	REVISED -
PLOT DATE = 1/9/2025	DATE -	REVISED -

STATE OF ILLINOIS
DEPARTMENT OF TRANSPORTATION

STEEL PLATE BEAM GUARDRAIL

SCALE: SHEET 6 OF 7 SHEETS STA. TO STA.

F.A.P RTE.	SECTION	COUNTY	TOTAL SHEETS	SHEET NO.
VAR	DIST 8 GUARDRAIL 2026-1	VARIOUS	12	11
CONTRACT NO. 76R11				
ILLINOIS FED. AID PROJECT				



GENERAL NOTES

USE PLATE WASHER F AT ALL POSTS.

THE BEARING PLATE K SHALL BE HELD IN POSITION BY (2) TWO EIGHT PENNY NAILS DRIVEN INTO THE POST AND BENT OVER THE TOP OF THE PLATE.

ALL DIMENSIONS ARE IN MILLIMETERS (INCHES) UNLESS OTHERWISE SHOWN.

THIS DETAIL IS APPLICABLE TO THE GUARDRAIL SYSTEM USED PRIOR TO JANUARY 1, 2007. FOR DETAILS ON THE MIDWEST GUARDRAIL SYSTEM, SEE STANDARD 630001.

STATE OF ILLINOIS
DEPARTMENT OF TRANSPORTATION

TRAFFIC BARRIER
TERMINAL TYPE 2

F.A.P RTE.	SECTION	COUNTY	TOTAL SHEETS	SHEET NO.
VAR	DIST 8 GUARDRAIL 2026-1	VARIOUS	12	12
CONTRACT NO. 76R11				
ILLINOIS FED. AID PROJECT				

SCALE: SHEET 7 OF 7 SHEETS STA. TO STA.