

PRINTED BY THE AUTHORITY  
OF THE STATE OF ILLINOIS

INDEX OF SHEETS

- 1 COVER SHEET
- 2 INDEX OF SHEETS, HIGHWAY STANDARDS, GENERAL NOTES AND COMMITMENTS
- 3 SUMMARY OF QUANTITIES
- 4 TYPICAL SECTIONS
- 5 SCHEDULE OF QUANTITIES
- 6-7 CLASS A PATCHING (SPECIAL) DETAIL
- 8 LOCATION MAP

HIGHWAY STANDARDS

- 000001-08 STANDARD SYMBOLS, ABBREVIATIONS & PATTERNS
- 001006 DECIMAL OF AN INCH & OF A FOOT
- 701006-05 OFF-RD OPERATIONS, 2L, 2W, 15' (4.5 M) TO 24" (600 MM) FROM PAVEMENT EDGE
- 701301-04 LANE CLOSURE, 2L, 2W, SHORT TIME OPERATIONS
- 701311-03 LANE CLOSURE 2L, 2W MOVING OPERATIONS-DAY ONLY
- 701501-06 URBAN LANE CLOSURE, 2L, 2W, UNDIVIDED
- 701901-10 TRAFFIC CONTROL DEVICES
- 780001-05 TYPICAL PAVEMENT MARKINGS

GENERAL NOTES

1. THE UTILITIES KNOWN TOHAVE FACILITIES WITHIN THE PROJECT AREA ARE AS FOLLOWS:

UTILITY	ABOVE GROUND	BELOW GROUND
BROADBAND	X	X
ILLINOIS AMERICAN WATER COMPANY		X
WINDSTREAM KDL, INC.	X	X

2. THE DEPARTMENT STRONGLY ENCOURAGES THE PRIME CONTRACTOR AND THEIR APPROVED SUB-CONTRACTORS TO HIRE MINORITY, WOMEN AND DISADVANTAGED INDIVIDUALS FROM ITS FEDERALLY FUNDED HIGHWAY CONSTRUCTION CAREERS TRAINING PROGRAM (HCCTP) TO HELP MEET WORKFORCE AND TRAINEE GOALS. THIS PROGRAM IS TRAINING MINORITIES, WOMEN AND DISADVANTAGED INDIVIDUALS IN HIGHWAY CONSTRUCTION-RELATED SKILLS, E.G., MATH FOR THE TRADES, JOB READINESS, TECHNICAL SKILLS COURSEWORK (CARPENTRY, CONCRETE FLATWORK, BLUEPRINT READING, SITE PLANS, SITE WORK, TOOLS USE, ETC.) AND OSHA 10 HOUR CERTIFICATION, TO PREPARE THEM FOR A CAREER IN THE HIGHWAY CONSTRUCTION TRADES. GRADUATES ARE WELL-TRAINED AND READY TO BECOME PRODUCTIVE ENTRY-LEVEL CONSTRUCTION WORKERS. CONTACT THE DISTRICT 8 EEO OFFICE AT 618-346-3360 AND/OR THE HCCTP COORDINATOR AT 618-874-6528 TO LEARN MORE ABOUT THE PROGRAM AND FOR ASSISTANCE IN MEETING WORKFORCE AND TRAINEE GOALS.
3. NO SURVEY WAS PERFORMED FOR THIS PROJECT AND THE PLANS WERE CREATED USING MICROFILM AND FIELD MEASUREMENTS.
4. THE RESIDENT ENGINEER SHALL VERIFY THE EXISTENCE OF HIGHWAY LIGHTING, INTELLIGENT TRANSPORTATION SYSTEMS (I.T.S.) UTILITIES, AND/OR ELECTRICAL CABLES ASSOCIATED WITH TRAFFIC SIGNALS WITHIN THE PROJECT LIMITS. IF ANY OF THESE EXIST WITHIN THE PROJECT LIMITS, AND IF THESE ITEMS REQUIRE LOCATING, THE CONTRACTOR SHALL BE DIRECTED TO DO SO ACCORDING TO SECTION 803 OF THE STANDARD SPECIFICATIONS. THIS WORK SHALL BE PAID FOR ACCORDING TO ARTICLE 109.04 OF THE STANDARD SPECIFICATIONS.
5. TWO CHANGEABLE MESSAGE SIGNS SHALL BE REQUIRED FOR THIS PROJECT. THEY SHALL BE PLACED TWO WEEKS PRIOR TO ANY LANE CLOSURE AND SHALL REMAIN UP FOR THE DURATION OF THE PROJECT. THE CHANGEABLE MESSAGE SIGNS SHALL BE PLACED AT THE BEGINNING AND END OF THE PROJECT OR AT THE DIRECTION OF THE ENGINEER.
6. THE PROPOSED PAVEMENT MARKING SHALL MATCH THE LOCATIONS OF THE EXISTING PAVEMENT MARKING, AS DIRECTED BY THE ENGINEER

COMMITMENTS

NONE

MODEL: Gennote [Sheet]  
FILE NAME: c:\p\work\pwtoll\slmam\41033672\0876K06-eh-gennote.dgn

	USER NAME = Meseret.sima	DESIGNED -	REVISED -	STATE OF ILLINOIS DEPARTMENT OF TRANSPORTATION	INDEX OF SHEETS, HIGHWAY STANDARDS, GENERAL NOTES AND COMMITMENTS		F.A.U RTE.	SECTION	COUNTY	TOTAL SHEETS	SHEET NO.
		DRAWN -	REVISED -				9162	94-15D-PP-1	ST CLAIR	8	2
		CHECKED -	REVISED -				CONTRACT NO. 76K06				
	PLOT DATE = 3/27/2025	DATE -	REVISED -				ILLINOIS FED. AID PROJECT				
SCALE:		SHEET 1	OF 1	SHEETS	STA.	TO STA.	LEBANON RD.				

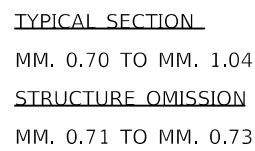
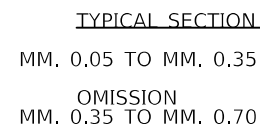
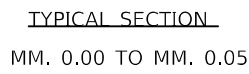
MODEL: SOQ-2 [Sheet]  
FILE NAME: c:\pwy\_work\pwytd\slm\am\41093672\0876K06-eh-SOQ.dgn

CODE NO.	ITEM	UNIT	TOTAL QUANTITY	CONSTR. CODE
				STATE 100%
				ROADWAY
				0006
				URBAN
44213000	PATCHING REINFORCEMENT	SQ YD	1893	1893
44213200	SAW CUTS	FOOT	3524	3524
44213204	TIE BARS 3/4"	EACH	633	633
67100100	MOBILIZATION	L SUM	1	1
70102620	TRAFFIC CONTROL AND PROTECTION, STANDARD 701501	L SUM	1	1
70300100	SHORT TERM PAVEMENT MARKING	FOOT	160	160
70300150	SHORT TERM PAVEMENT MARKING REMOVAL	SQ FT	55	55
70300211	TEMPORARY PAVEMENT MARKING LETTERS AND SYMBOLS - PAINT	SQ FT	147	147
70300221	TEMPORARY PAVEMENT MARKING - LINE 4"- PAINT	FOOT	2114	2114
* 78001100	PAINT PAVEMENT MARKING - LETTERS AND SYMBOLS	SQ FT	147	147
* 78001110	PAINT PAVEMENT MARKING - LINE 4"	FOOT	2114	2114
X4420565	CLASS A PATCHES, TYPE II, 11 INCH (SPECIAL)	SQ YD	328	328
X4420569	CLASS A PATCHES, TYPE III, 11 INCH (SPECIAL)	SQ YD	37	37
X4420571	CLASS A PATCHES, TYPE IV, 11 INCH (SPECIAL)	SQ YD	1529	1529

\* SPECIALTY ITEM

CODE NO.	ITEM	UNIT	TOTAL QUANTITY	CONSTR. CODE
				STATE 100%
				ROADWAY
				0006
				URBAN
Z0048665	RAILROAD PROTECTIVE LIABILITY INSURANCE	L SUM	1	1

	USER NAME = Meseret.sima	DESIGNED -	REVISED -	STATE OF ILLINOIS DEPARTMENT OF TRANSPORTATION	SUMMARY OF QUANTITIES			F.A.U RTE.	SECTION	COUNTY	TOTAL SHEETS	SHEET NO.
		DRAWN -	REVISED -					9162	94-15D-PP-1	ST CLAIR	8	3
		CHECKED -	REVISED -					CONTRACT NO. 76K06				
	PLOT DATE = 3/27/2025	DATE -	REVISED -					ILLINOIS FED. AID PROJECT				
SCALE:		SHEET 1	OF 1	SHEETS	STA.	TO STA.		LEBANON RD.				



**LEGEND**

- ① EXISTING PPC PAVEMENT
- ② EXISTING CURB & GUTTER
- ③ EXISTING BITUMINOUS MATERIAL (PRIME COAT)
- ④ EXISTING CONCRETE GUTTER
- ⑤ EXISTING AGGREGATE (PRIME COAT)
- ⑥ EXISTING HOT-MIX ASPHALT SURFACE COURSE, MIX "D", N70, 1 1/2"
- ⑦ EXISTING THERMOPLASTIC PAVEMENT MARKING-LINE 4"

FILE NAME:	USER NAME = Meseret.sima	DESIGNED -	REVISED -	STATE OF ILLINOIS DEPARTMENT OF TRANSPORTATION	TYPICAL SECTIONS	F.A.U RTE.				SECTION	COUNTY	TOTAL SHEETS	SHEET NO.
		DRAWN -	REVISED -			9162	94-15D-PP-1	ST CLAIR	8	4			
		CHECKED -	REVISED -			CONTRACT NO. 76K06							
	PLOT DATE = 3/24/2025	DATE -	REVISED -			SCALE:	SHEET 1	OF 1 SHEETS	STA.	TO STA.			

LEBANON RD.

MODEL: Typical [Sheet]  
FILE NAME: c:\pw\_work\pwid\slmam\d1093672\ID876K06-sh1-typical.dgn



MODEL: Schedule [Sheet]  
FILE NAME: c:\p\p\_work\work\slm\m\103367\2\0876K06-eh-schedule.dgn

PATCHING SCHEDULE									
MILE STA.	EB/WB	LENGTH	LANE WIDTH	CLASS A PATCH (SPECIAL)			PATCHING REINFORCEMENT	TIE BARS 3/4 INCH	SAW CUTS
				11 INCH					
MILES		(FT)	(FT)	TYPE II (SQ YD)	TYPE III (SQ YD)	TYPE IV (SQ YD)	(SQ YD)	(EACH)	(FOOT)
0.1	EB	10	12	13.3			13.3	4	44
0.1	WB	10	12	13.3			13.3	4	
0.12	EB	12	12		16.0		16.0	5	48
0.12	WB	12	12		16.0		16.0	5	
0.15	EB	8	12	10.7			10.7	3	40
0.17	EB	6	12	8.0			8.0	2	36
0.17	WB	6	12	8.0			8.0	2	
0.25	EB	6	12	8.0			8.0	2	36
0.25	WB	6	12	8.0			8.0	2	
0.4	EB	20	12			26.7	26.7	9	76
0.4	WB	20	12			26.7	26.7	9	
0.51	EB	25	12			33.3	33.3	12	98
0.51	WB	25	12			33.3	33.3	12	
0.51	EB	310	12			413.3	413.3	154	1004
0.51	WB	310	12			413.3	413.3	154	
0.57	EB	120	12			160.0	160.0	59	396
0.61	EB	6	12	8.0			8.0	2	36
0.61	WB	6	12	8.0			8.0	2	
0.64	EB	10	12	13.3			13.3	4	44
0.64	WB	10	12	13.3			13.3	4	
0.66	EB	20	12			26.7	26.7	9	76
0.66	WB	20	12			26.7	26.7	9	
0.75	EB	6	12	8.0			8.0	2	36
0.75	WB	6	12	8.0			8.0	2	
0.78	EB	6	15	10.0			10.0	2	42
0.79	EB	25	15			41.7	41.7	12	110
0.8	WB	6	16	10.7			10.7	2	44
0.81	WB	6	16	10.7			10.7	2	44
0.91	EB	6	15	10.0			10.0	2	42
0.92	EB	6	15	10.0			10.0	2	42
0.92	WB	6	16	10.7			10.7	2	44
0.95	WB	6	16	10.7			10.7	2	44
1.01	EB	6	15	10.0			10.0	2	42
1.01	EB	25	15			41.7	41.7	12	110
1.01	EB	6	15	10.0			10.0	2	42
1.01	EB	25	15			41.7	41.7	12	110
1.01	WB	6	16	10.7			10.7	2	44
1.02	WB	6	16	10.7			10.7	2	44
1.02	WB	6	16	10.7			10.7	2	44
1.03	WB	6	16	10.7			10.7	2	44
1.03	WB	6	16	10.7			10.7	2	44
1.04	WB	6	16	10.7			10.7	2	44
1.04	WB	25	16			44.4	44.4	12	114
SUBTOTAL:				284.7	32.0	1329.4	1646.1	550.0	3064.0
ANTICIPATED FAILURES (15%):				43.0	5.0	200.0	247.0	83.0	460.0
TOTAL:				328	37	1529	1893	633	3524

PAVEMENT MARKING SCHEDULE										
MILE STA.	EB/WB	LENGTH	LANE WIDTH	PAINT PAVEMENT MARKING			TEMPORARY PAVEMENT MARKING PAINT	TEMPORARY PAVEMENT MARKING LETTERS AND SYMBOLS - PAINT	SHORT TERM PAVEMENT MARKING	SHORT TERM PAVEMENT MARKING REMOVAL
				YELLOW LINE 4-INCH	WHITE LINE 4-INCH	LETTERS & SYMBOLS				
MILES		(FT)	(FT)	(FT)	(FT)	(SQ FT)	(FT)	(SQ FT)	(FT)	(SQ FT)
0.1	EB	10	12	10	10	32	20	32		
0.1	WB	10	12	10	10		20			
0.12	EB	12	12	12	12		24			
0.12	WB	12	12	12	12		24			
0.15	EB	8	12	8	8		16			
0.17	EB	6	12	6	6		12			
0.17	WB	6	12	6	6		12			
0.25	EB	6	12	6	6		12			
0.25	WB	6	12	6	6		12			
0.4	EB	20	12	20	20		40			
0.4	WB	20	12	20	20		40			
0.51	EB	25	12	25	25		50			
0.51	WB	25	12	25	25		50			
0.51	EB	310	12	310	310		620		64	22
0.51	WB	310	12	310	310		620		64	22
0.57	EB	120	12	120	120		240		24	8
0.61	EB	6	12	6	6		12		8	3
0.61	WB	6	12	6	6		12			
0.64	EB	10	12	10	10		20			
0.64	WB	10	12	10	10		20			
0.66	EB	20	12	20	20	115.2	40	115.2		
0.66	WB	20	12	20	20		40			
0.75	EB	6	12	6	6		12			
0.75	WB	6	12	6	6		12			
0.78	EB	6	15	6	6		12			
0.79	EB	25	15	25	25		50			
0.8	WB	6	16	6	6		12			
0.81	WB	6	16	6	6		12			
0.91	EB	6	15	6	6		12			
0.92	EB	6	15	6	6		12			
0.92	WB	6	16	6	6		12			
0.95	WB	6	16	6	6		12			
1.01	EB	6	15	6	6		12			
1.01	EB	25	15	25	25		50			
1.01	EB	6	15	6	6		12			
1.01	EB	25	15	25	25		50			
1.01	WB	6	16	6	6		12			
1.02	WB	6	16	6	6		12			
1.02	WB	6	16	6	6		12			
1.03	WB	6	16	6	6		12			
1.03	WB	6	16	6	6		12			
1.04	WB	6	16	6	6		12			
1.04	WB	25	16	25	25		50			
SUBTOTAL:				1057	1057	147.2	2114	147.2	160	55
TOTAL:				1057	1057	147	2114	147	160	55

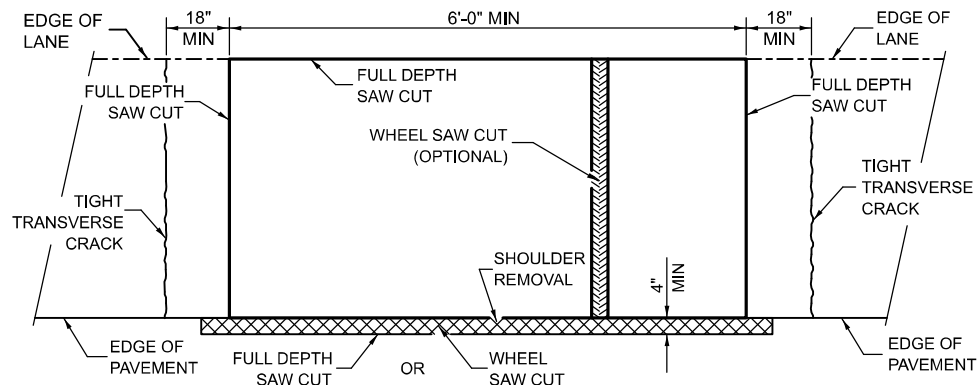
PLOT DATE	USER NAME	DESIGNED	REVISED
	= Meseret.sima	-	-
		DRAWN	REVISED
		-	-
		CHECKED	REVISED
		-	-
DATE		-	REVISED
= 3/27/2025		-	-

STATE OF ILLINOIS  
DEPARTMENT OF TRANSPORTATION

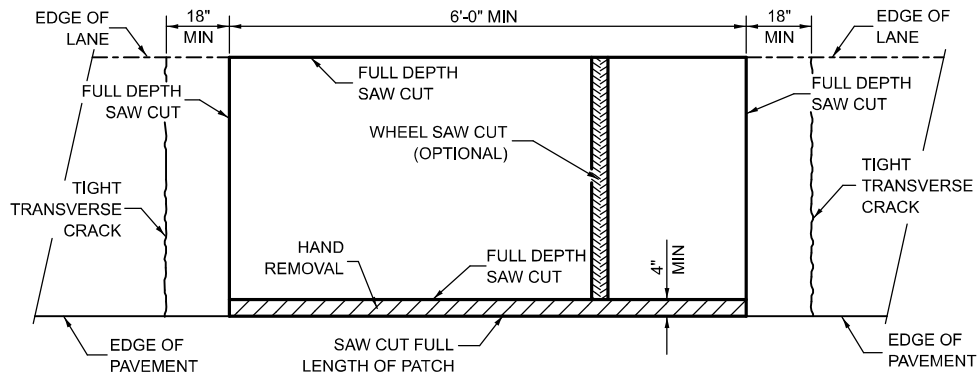
SCHEDULE OF QUANTITIES

SCALE: SHEET 1 OF 1 SHEETS STA. TO STA.

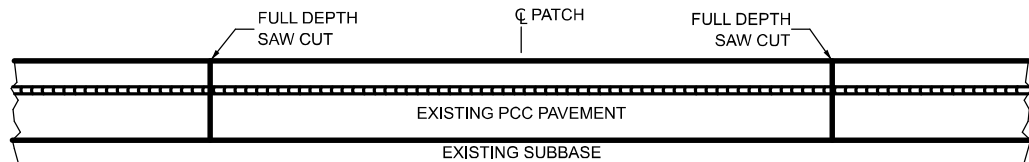
F.A.U RTE.	SECTION	COUNTY	TOTAL SHEETS	SHEET NO.
9162	94-15D-PP-1	ST CLAIR	8	5
CONTRACT NO. 76K06				
		ILLINOIS	FED. AID PROJECT	



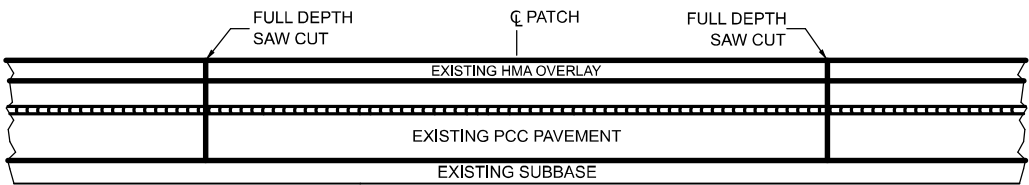
**PAVEMENT SAWING DETAIL  
(HMA SHOULDER)**



**PAVEMENT SAWING DETAIL  
(PCC SHOULDER)**

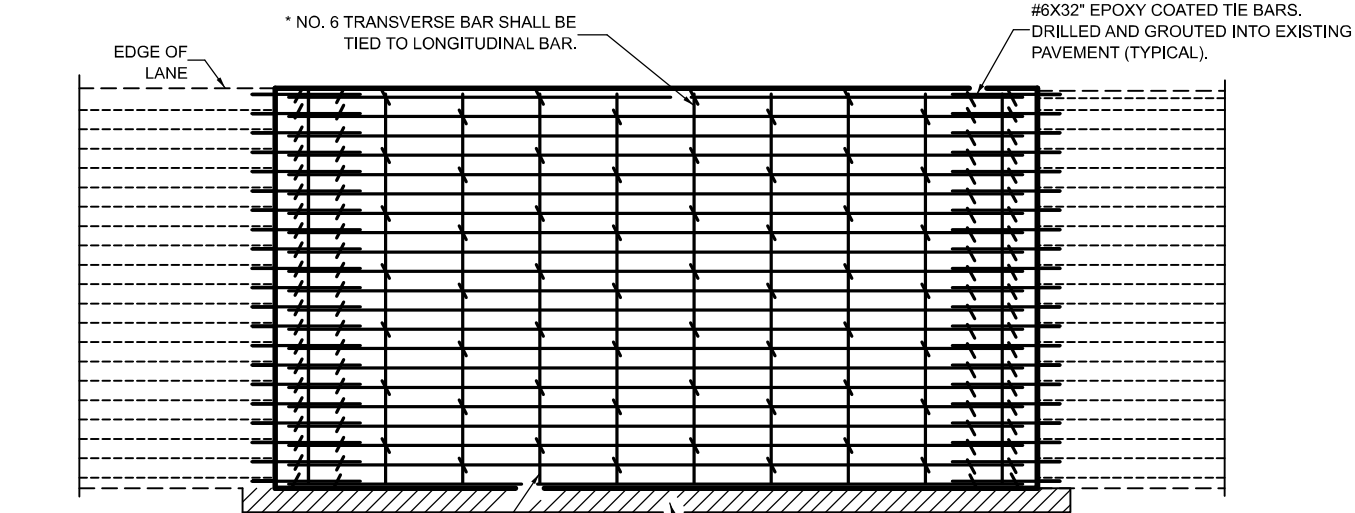


**EXISTING PAVEMENT WITHOUT HMA SURFACE**

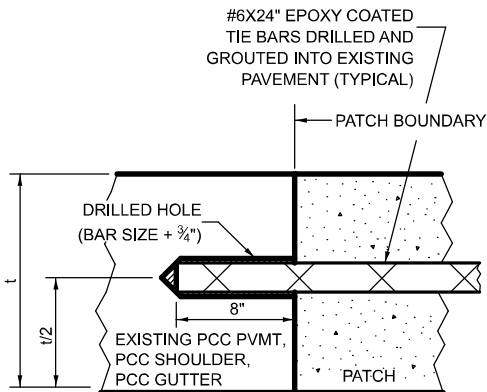


**EXISTING PAVEMENT WITH HMA SURFACE**

**PAVEMENT SAWING DETAIL FOR CLASS A PATCHING  
(CRC PAVEMENT)**



**PAVEMENT REINFORCEMENT DETAIL**



**LONGITUDINAL CONSTRUCTION JOINT**

PATCHES MORE THAN 20' IN LENGTH SHALL BE TIED TO ADJACENT PAVEMENT, PCC SHOULDERS OR PCC CURB AND CUTTER WITH #6x32" EPOXY COATED TIE BARS AT 36" CENTERS.

**NOTES:**

EXISTING LONGITUDINAL REINFORCEMENT SPACING;  $\pm 6\frac{1}{2}"$ .

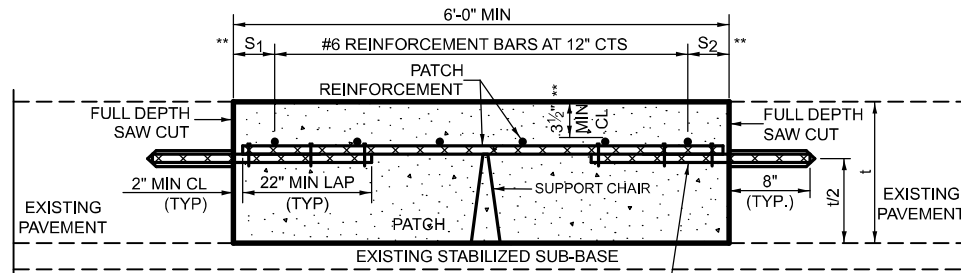
SPACING OF NEW LONGITUDINAL REINFORCEMENT AND NEW LONGITUDINAL TIE BARS SHALL MATCH SPACING OF EXISTING REINFORCEMENT AND SHALL BE TIED TOGETHER WITH A MINIMUM OF TWO TIES PER BAR.

SUPPORT CHAIRS SHALL BE REQUIRED WHENEVER PATCH LENGTH EXCEEDS 6'-0"

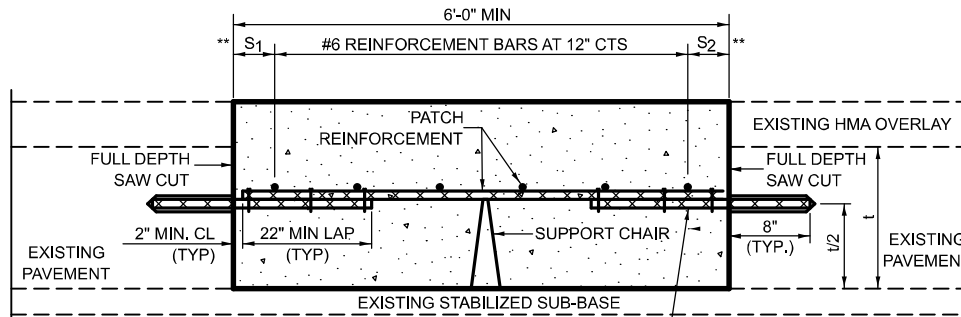
PATCHES GREATER THAN 20 FEET IN LENGTH SHALL REQUIRE AN ADDITIONAL TRANSVERSE SAW CUT EVERY 10 FEET.

\*EVERY THIRD INTERSECTION MUST BE TIED. WHEN THE MINIMUM CLEARANCE CANNOT BE OBTAINED WITH THE TRANSVERSE REBAR ON TOP, THEN THE TRANSVERSE REBAR SHALL BE TIED TO THE BOTTOM OF THE LONGITUDINAL REBAR.

\*\*VARIABLES WHERE S AND S ARE  $2\frac{1}{2}"$  MIN. AND 12" MAX.



**WITHOUT HMA OVERLAY**



**WITH HMA OVERLAY**

**PATCHING DETAIL FOR CLASS A PATCHING  
(CRC PAVEMENT)**

MODEL: Detail 1 of Class A Patching (Sheet)  
FILE NAME: c:\p\work\pav\detail\103672\0876K06-sh1-detailed.dgn

USER NAME = Meseret.sima	DESIGNED -	REVISED -
	DRAWN -	REVISED -
	CHECKED -	REVISED -
PLOT DATE = 3/24/2025	DATE -	REVISED -

**STATE OF ILLINOIS  
DEPARTMENT OF TRANSPORTATION**

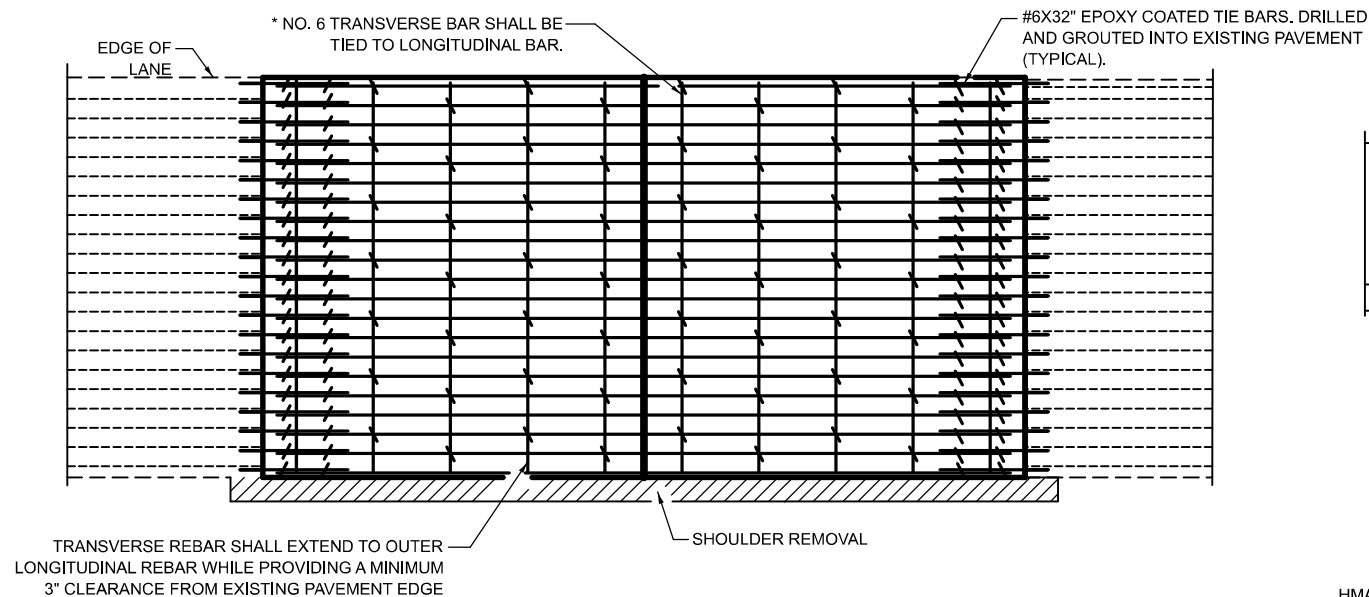
**CLASS A PATCHING (SPECIAL)**

SCALE: SHEET 1 OF 2 SHEETS STA. TO STA.

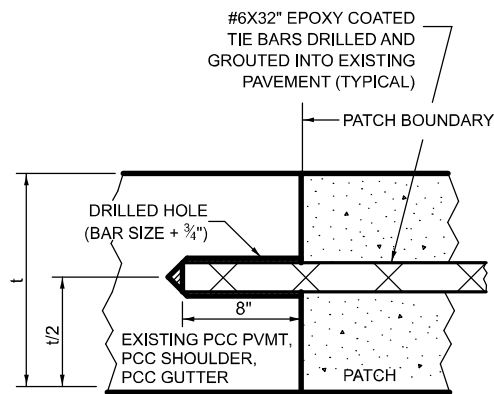
F.A.U RTE.	SECTION	COUNTY	TOTAL SHEETS	SHEET NO.
9162	94-15D-PP-1	ST CLAIR	8	6
CONTRACT NO. 76K06				
ILLINOIS FED. AID PROJECT				

LEBANON RD.

TRANSVERSE EXPANSION JOINTS

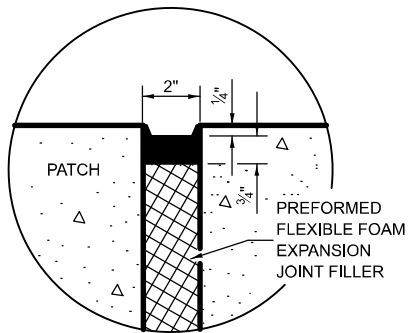


PAVEMENT REINFORCEMENT DETAIL

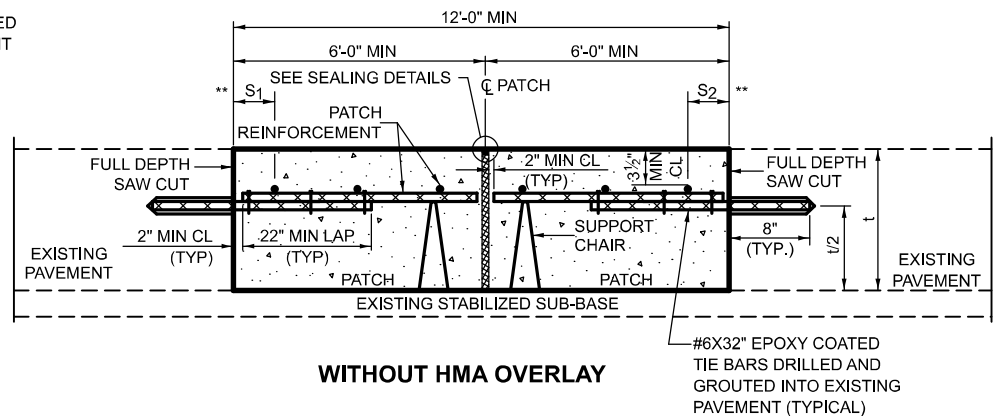


LONGITUDINAL CONSTRUCTION JOINT

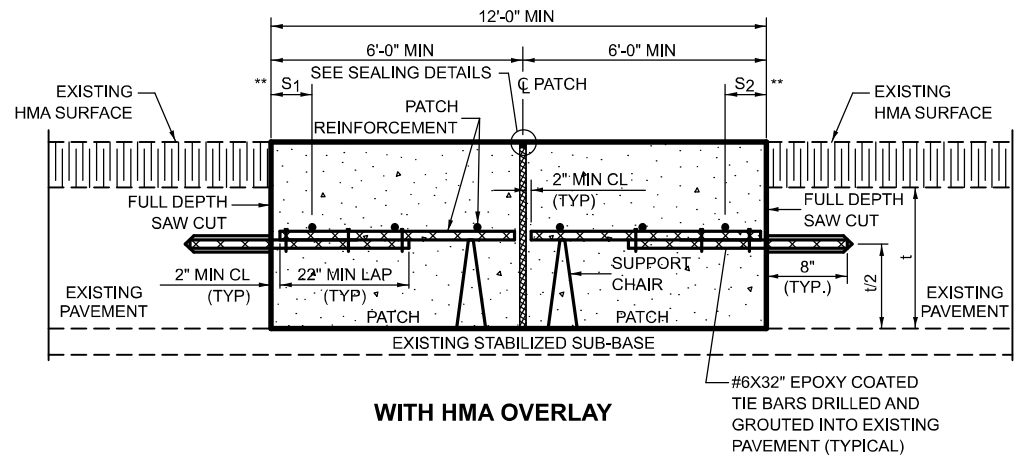
PATCHES MORE THAN 20' IN LENGTH SHALL BE TIED TO ADJACENT PAVEMENT, PCC SHOULDERS OR PCC CURB AND GUTTER WITH #6x32" EPOXY COATED TIE BARS AT 36" CENTERS.



SEALING DETAIL



WITHOUT HMA OVERLAY



WITH HMA OVERLAY

CLASS A PATCH WITH EXPANSION JOINT

NOTES:

EXISTING LONGITUDINAL REINFORCEMENT SPACING;  $\pm 6\frac{1}{2}"$ .

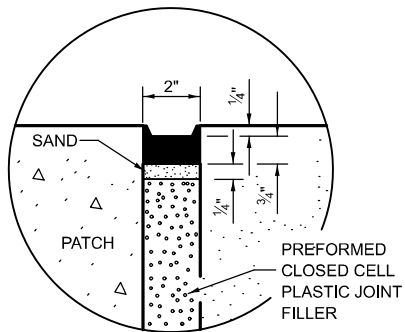
SPACING OF NEW LONGITUDINAL REINFORCEMENT AND NEW LONGITUDINAL TIE BARS SHALL MATCH SPACING OF EXISTING REINFORCEMENT AND SHALL BE TIED TOGETHER WITH A MINIMUM OF TWO TIES PER BAR.

SUPPORT CHAIRS SHALL BE REQUIRED WHENEVER PATCH LENGTH EXCEEDS 6'-0"

PATCHES GREATER THAN 20 FEET IN LENGTH SHALL REQUIRE AN ADDITIONAL TRANSVERSE SAW CUT EVERY 10 FEET.

\*EVERY THIRD INTERSECTION MUST BE TIED. WHEN THE MINIMUM CLEARANCE CANNOT BE OBTAINED WITH THE TRANSVERSE REBAR ON TOP, THEN THE TRANSVERSE REBAR SHALL BE TIED TO THE BOTTOM OF THE LONGITUDINAL REBAR.

\*\*VARIABLES WHERE S<sub>1</sub> AND S<sub>2</sub> ARE 2½" MIN. AND 12" MAX.



SEALING DETAIL

STATE OF ILLINOIS  
DEPARTMENT OF TRANSPORTATION

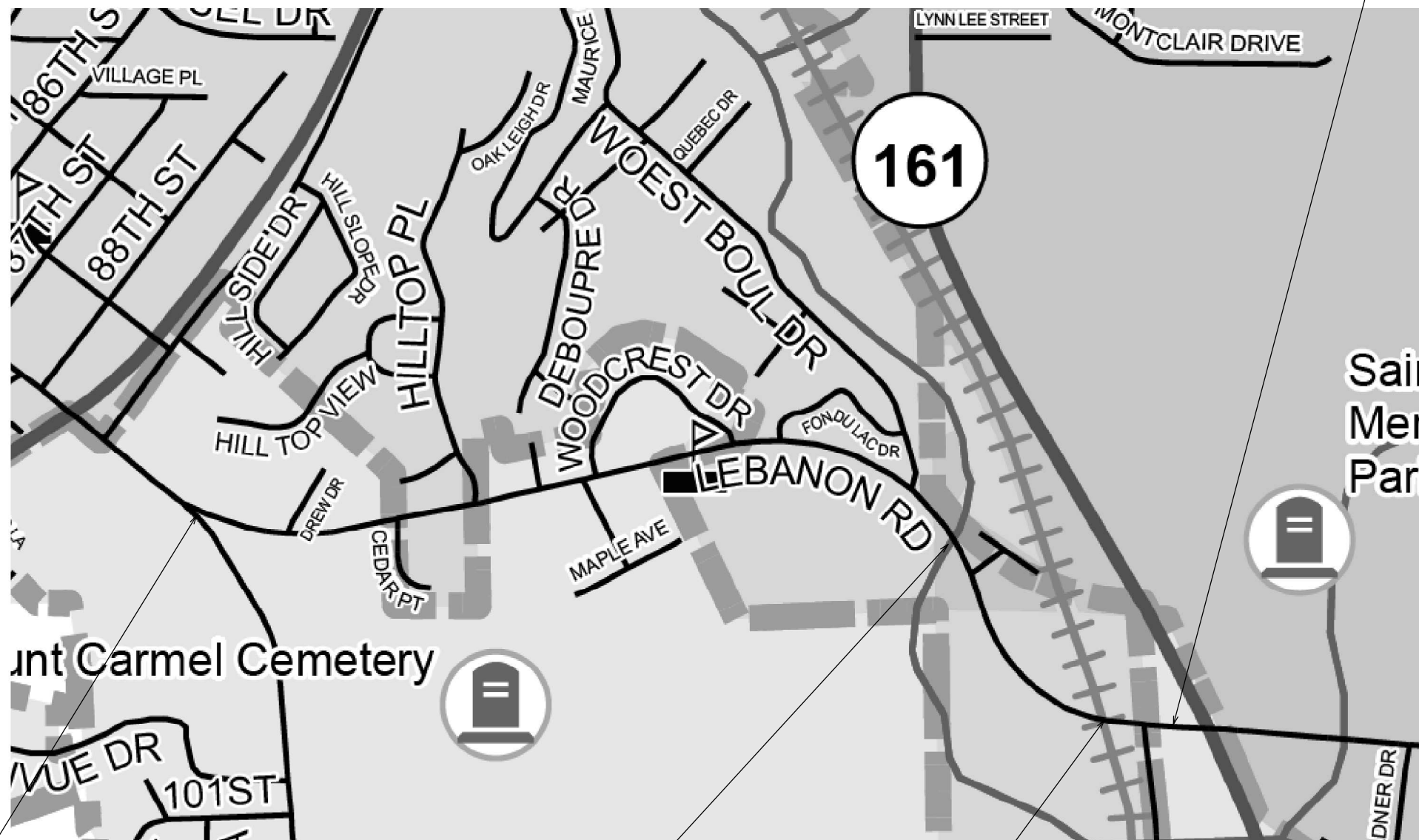
CLASS A PACHING (SPECIAL)

SCALE: SHEET 2 OF 2 SHEETS STA. TO STA.

F.A.U RTE.	SECTION	COUNTY	TOTAL SHEETS	SHEET NO.
9162	94-15D-PP-1	ST CLAIR	8	7
CONTRACT NO. 76K06				
ILLINOIS FED. AID PROJECT				

LEBANON RD.

**PROJECT ENDS**  
**MM. 1.04**



**PROJECT  
BEGINS  
MM. 0.00**

**STRUCTURE OMISSION**  
**SN. 082-0258**  
**MM. 0.71 TO MM. 0.73**

**METROLINK RAIL**  
**MM. 0.96 TO MM. 0.97**



USER NAME    = Meseret.sima	DESIGNED    -	REVISED    -	<div>STATE OF ILLINOIS</div> <div>DEPARTMENT OF TRANSPORTATION</div>	<div>LOCATION MAP</div>	F.A.U RTE.	SECTION	COUNTY	TOTAL SHEETS	SHEET NO.
	DRAWN    -	REVISED    -			9162	94-15D-PP-1	ST CLAIR	8	8
	CHECKED    -	REVISED    -			CONTRACT NO. 76K06				
PLOT DATE    = 3/25/2025	DATE    -	REVISED    -			SCALE:	SHEET 1	OF 1	SHEETS	STA.