

INDEX OF SHEETS

- 1 COVER SHEET
 2 SUMMARY OF QUANTITIES
 3-6 25TH STREET - FORCE MAIN CLEANING
 7-10 MISSOURI AVENUE - FORCE MAIN CLEANING
 11-12 VENICE - FORCE MAIN CLEANING
 13-15 GENERAL DETAILS

HIGHWAY STANDARDS

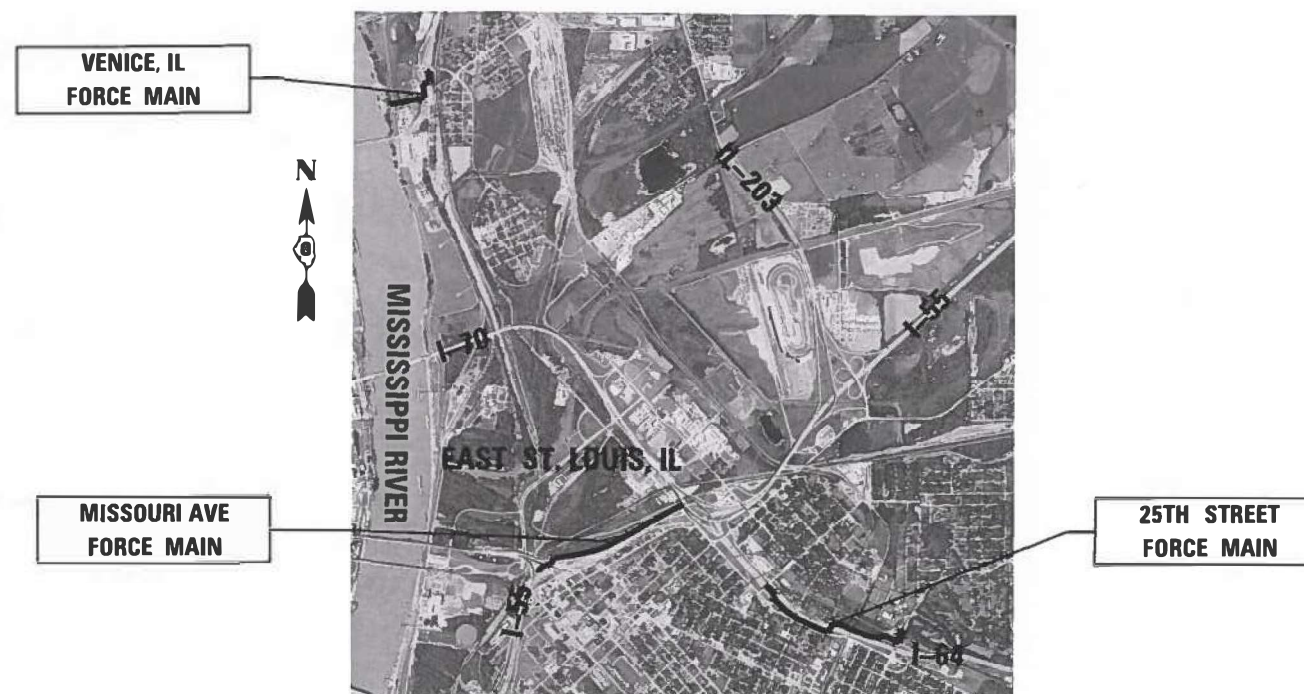
- 000001-08 STANDARD SYMBOLS, ABBREVIATIONS AND PATTERNS
 001006 DECIMAL OF AN INCH AND OF A FOOT
 701456-05 PARTIAL EXIT RAMP CLOSURE FREEWAY/EXPRESSWAY
 701901-10 TRAFFIC CONTROL DEVICES

STATE OF ILLINOIS
 DEPARTMENT OF TRANSPORTATION

PROPOSED HIGHWAY PLANS

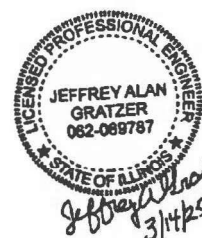
FAI070, FAU 9228, FAP 788
 (I-55, I-64, IL 3, US 40)
 SECTION 82-4PS-4, (Z-1)PS-3, 29PS-3, 27PS-1
 FORCE MAIN CLEANING
 ST. CLAIR AND MADISON COUNTIES

C-98-073-25



ST. CLAIR & MADISON COUNTIES

GROSS LENGTH = N/A
 NET LENGTH = N/A



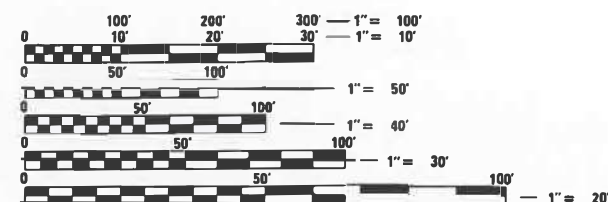
JEFFREY A. GRATZER
 REGISTERED PROFESSIONAL ENGINEER
 STATE OF ILLINOIS NO. 062.069787
 LICENSE EXPIRES NOVEMBER 30, 2025

DATE

PLANS PREPARED BY:



m3
 ENGINEERING GROUP



FULL SIZE PLANS HAVE BEEN PREPARED USING STANDARD
 ENGINEERING SCALES. REDUCED SIZED PLANS WILL NOT
 CONFORM TO STANDARD SCALES. IN MAKING MEASUREMENTS
 ON REDUCED PLANS, THE ABOVE SCALES MAY BE USED.

J.U.L.I.E.
 JOINT UTILITY LOCATION INFORMATION FOR EXCAVATION
 1-800-892-0123
 OR 811

PROJECT ENGINEER: CHERYL KEPLAR
 PROJECT MANAGER: RICHARD BARBEE

CONTRACT NO. 76F82

F.A.U. RTE.	SECTION	COUNTY	TOTAL SHEETS	SHEET NO.
VARES	82-4PS-4, 29PS-2, 27PS-8	ILLINOIS	15	1
CONTRACT NO. 76F82				

• ST. CLAIR & MADISON

D-98-024-25



LOCATION OF SECTION INDICATED THUS: — ■ —

STATE OF ILLINOIS
 DEPARTMENT OF TRANSPORTATION

SUBMITTED March 18 20 25
Lora Ring REGIONAL ENGINEER
 May 9 20 25
Scott A. Etkin ENGINEER OF DESIGN AND ENVIRONMENT
 May 9 20 25
Cheryl Keplar DIRECTOR OF HIGHWAYS PROJECT IMPLEMENTATION

PRINTED BY THE AUTHORITY
 OF THE STATE OF ILLINOIS

REV - MS

SUMMARY OF QUANTITIES

[illegible]

REV - MS

GENERAL NOTES:
1. LOCATIONS OF EXISTING FORCE MAIN AND CLEANOUT STRUCTURES ARE BASED ON AERIAL IMAGERY AND EXISTING PLANS. CONTRACTOR SHALL VERIFY LOCATIONS AND DEPTHS PRIOR TO STARTING WORK.
2. PROFILE SHOWN OF EXISTING FORCE MAIN IS APPROXIMATE AND IS BASED ON EXISTING PLANS. CONTRACTOR SHALL FIELD VERIFY PRIOR TO STARTING WORK.
3. ONE OF THE TWO FORCE MAINS SHALL BE AVAILABLE FOR SERVICE AT ALL TIMES.

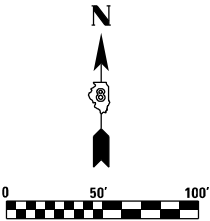
DUAL 12 INCH FORCE MAIN DISCHARGE LOCATION TO EXISTING STORM MANHOLE. CONTRACTOR TO LOCATE IN FIELD.

APPROXIMATE LOCATION OF EXISTING TWO 12 INCH FORCE MAINS. CONTRACTOR TO FIELD VERIFY LOCATION.

CLEANOUT 25-1 IS ACCESSIBLE VIA THE EXIT/ENTRANCE RAMP I-64 FROM/TO I-64

76062 RECORD STEEL CASING TOP ~423.5

CLEANOUT 25-1 76062 RECORD STRUCTURE DEPTH ~10.5 FT SEE DETAIL 1 FOR TYPICAL CLEANOUT STRUCTURE



SEE SHEET 4

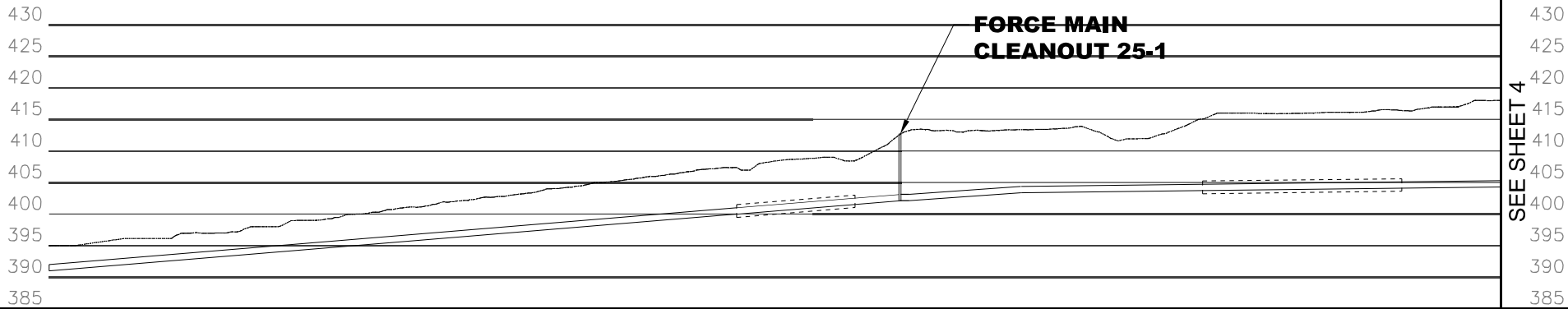
N 15TH ST

SAINT CLAIR AVE

GRASS SURFACE

I-64

WABASH AVE



P:\Donohue\WDY6 - Force Main Cleaning\12.CADD\DesignFiles\12B76J24-SHT-PLAN.dgn



m3
ENGINEERING GROUP

USER NAME = Mike.Brown
PLOT SCALE = 50 FEET PER INCH
PLOT DATE = 2/26/2025

DESIGNED - REK
DRAWN - MRB
CHECKED - JAG
DATE - 2/26/2025

REVISED -
REVISED -
REVISED -
REVISED -

**STATE OF ILLINOIS
DEPARTMENT OF TRANSPORTATION**

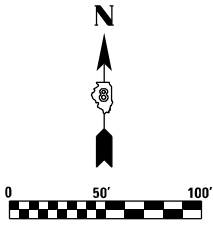
**25TH STREET WELL, FORCE MAINS
AND CLEANOUT LOCATIONS**

SCALE: SHEET OF SHEETS STA. TO STA.

• ST. CLAIR AND MADISON

F.A.U. RTE.	SECTION	COUNTY	TOTAL SHEETS	SHEET NO.
VARIES	82-4PS-4, 29PS-2, 27PS-8	*	15	3
CONTRACT NO. 76F82				
ILLINOIS FED. AID PROJECT				

GENERAL NOTES:
1. LOCATIONS OF EXISTING FORCE MAIN AND CLEANOUT STRUCTURES ARE BASED ON AERIAL IMAGERY AND EXISTING PLANS. CONTRACTOR SHALL VERIFY LOCATIONS AND DEPTHS PRIOR TO STARTING WORK.
2. PROFILE SHOWN OF EXISTING FORCE MAIN IS APPROXIMATE AND IS BASED ON EXISTING PLANS. CONTRACTOR SHALL FIELD VERIFY PRIOR TO STARTING WORK.
3. ONE OF THE TWO FORCE MAINS SHALL BE AVAILABLE FOR SERVICE AT ALL TIMES.



SEE SHEET 3

CLEANOUT 25-2
76062 RECORD
STRUCTURE
DEPTH ~12.8 FT

CLEANOUT 25-2 IS ACCESSIBLE FROM THE SHOULDER OF THE ACCELERATION RAMP FROM SAINT CLAIRE AVE TO EAST BOUND I-64

CLEANOUT 25-3
76062 RECORD
STRUCTURE
DEPTH ~9.5 FT

APPROXIMATE LOCATION OF EXISTING TWO 12 INCH FORCE MAINS. CONTRACTOR TO FIELD VERIFY LOCATION.

I-64

CLEANOUT 25-4
76062 RECORD
STRUCTURE
DEPTH ~5.9 FT

SAINT CLAIR AVE

CLEANOUTS 25-3, 25-4 & 25-5 ARE ACCESSIBLE FROM SAINT CLAIRE AVE.

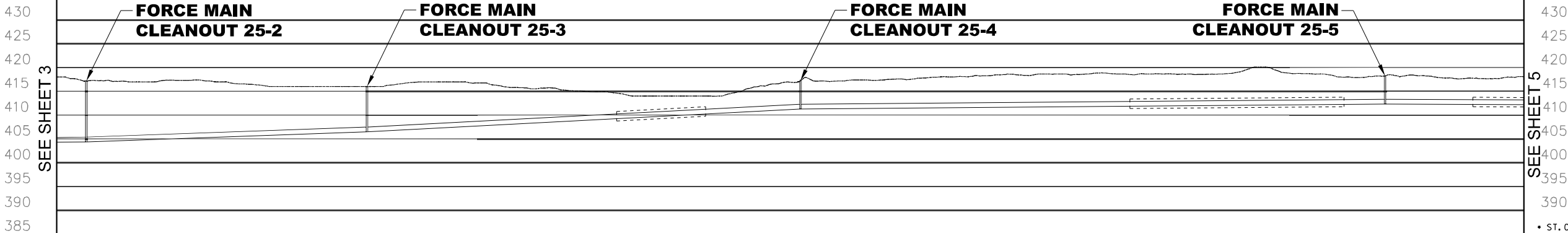
N 18TH ST

SHORT ST

CLEANOUT 25-5
76062 RECORD
STRUCTURE
DEPTH ~5.9 FT

N 19TH ST

SEE SHEET 5



• ST. CLAIR AND MADISON

P:\Donohue\WD\6 - Force Main Cleaning\12.CADD\DesignFiles\12B76B24-SHT-PLAN.dgn



m3
ENGINEERING GROUP

USER NAME = Mike.Brown
PLOT SCALE = 50 FEET PER INCH
PLOT DATE = 2/26/2025

DESIGNED - REK
DRAWN - MRB
CHECKED - JAG
DATE - 2/26/2025

REVISED -
REVISED -
REVISED -
REVISED -

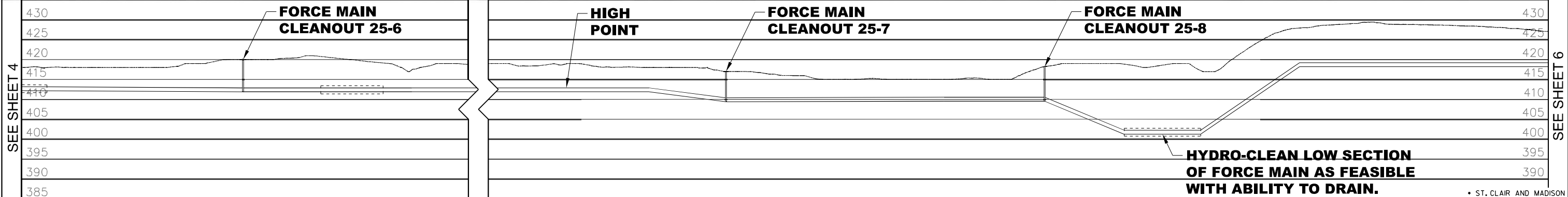
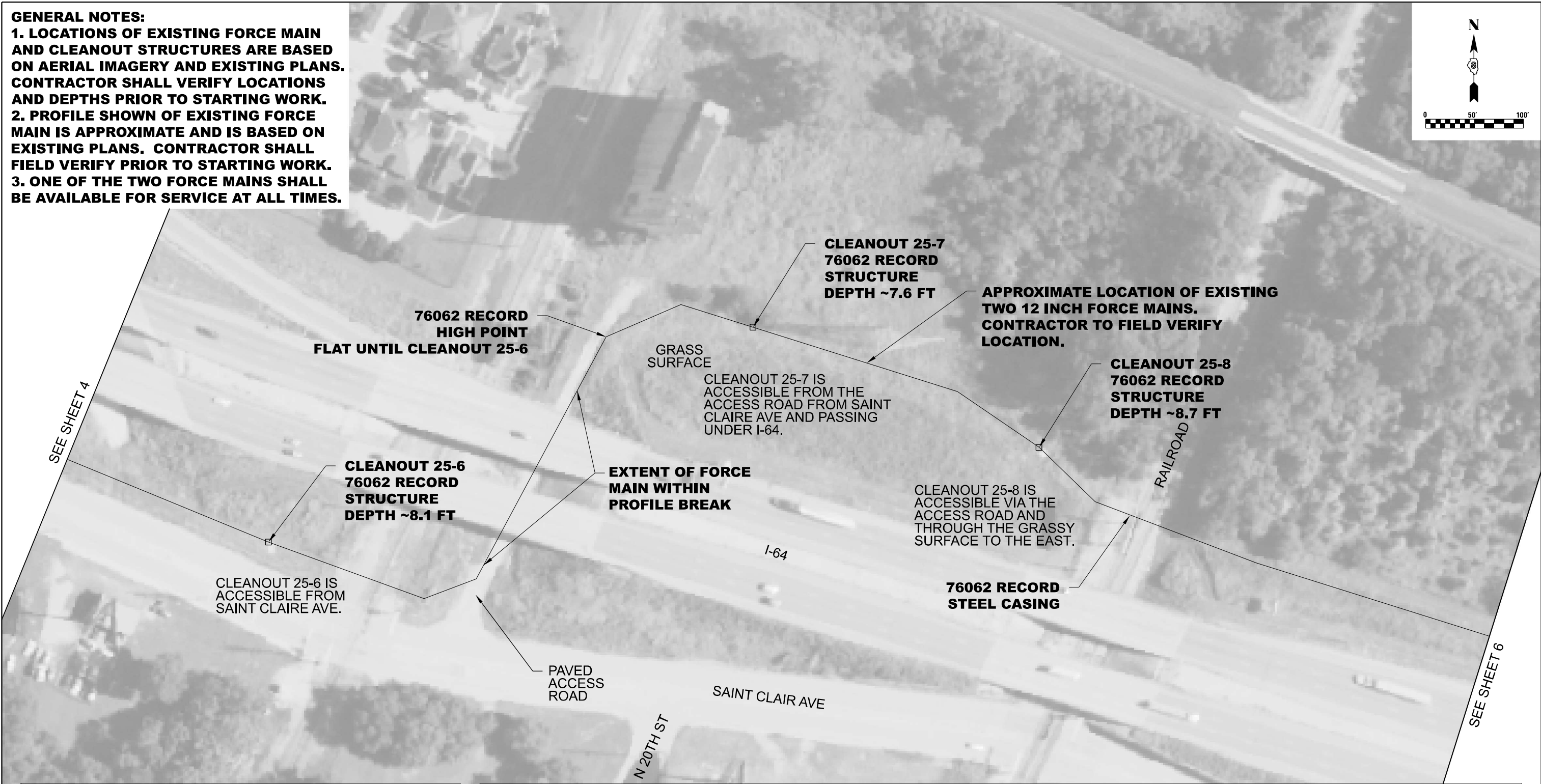
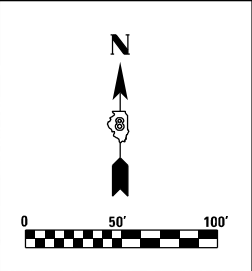
STATE OF ILLINOIS
DEPARTMENT OF TRANSPORTATION

25TH STREET WELL, FORCE MAINS
AND CLEANOUT LOCATIONS

SCALE: SHEET OF SHEETS STA. TO STA.

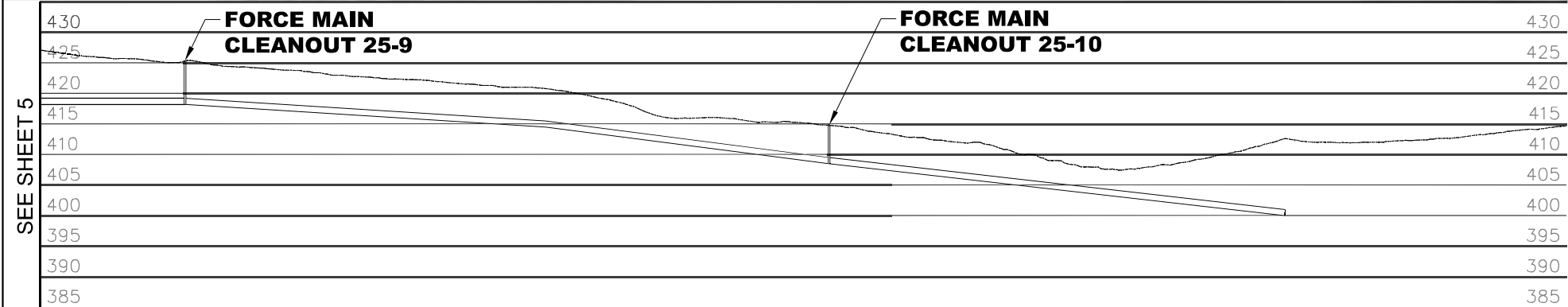
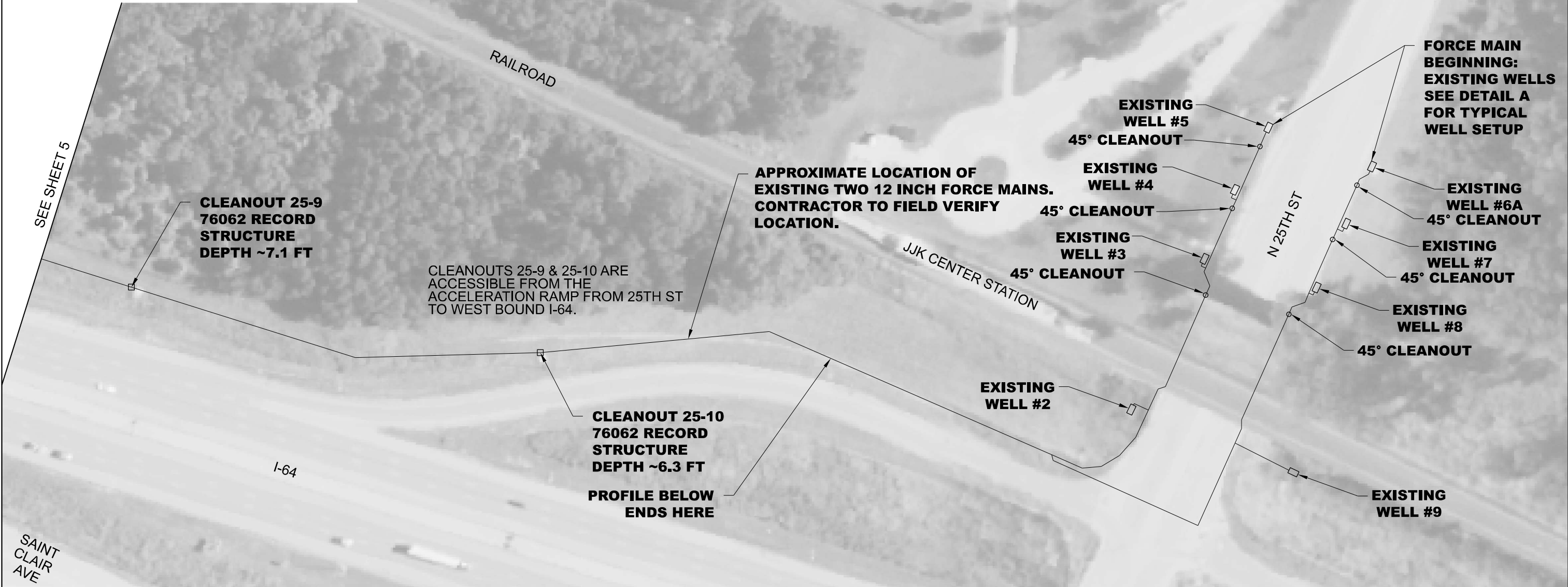
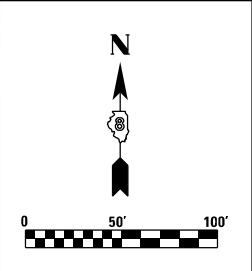
F.A.U. RTE.	SECTION	COUNTY	TOTAL SHEETS	SHEET NO.
VARIES	82-4PS-4, 29PS-2, 27PS-8	•	15	4
CONTRACT NO. 76F82				
ILLINOIS FED. AID PROJECT				

GENERAL NOTES:
1. LOCATIONS OF EXISTING FORCE MAIN AND CLEANOUT STRUCTURES ARE BASED ON AERIAL IMAGERY AND EXISTING PLANS. CONTRACTOR SHALL VERIFY LOCATIONS AND DEPTHS PRIOR TO STARTING WORK.
2. PROFILE SHOWN OF EXISTING FORCE MAIN IS APPROXIMATE AND IS BASED ON EXISTING PLANS. CONTRACTOR SHALL FIELD VERIFY PRIOR TO STARTING WORK.
3. ONE OF THE TWO FORCE MAINS SHALL BE AVAILABLE FOR SERVICE AT ALL TIMES.



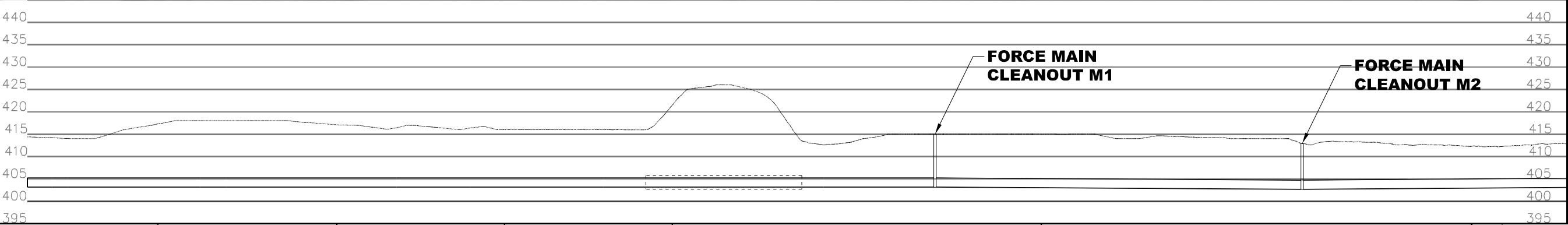
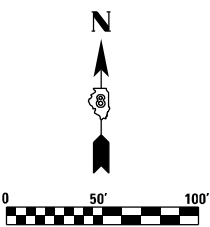
P:\Donohue\WD\6 - Force Main Cleaning\12.CADD\DesignFiles\087624-SHT-PLAN.dgn

GENERAL NOTES:
1. LOCATIONS OF EXISTING FORCE MAIN AND CLEANOUT STRUCTURES ARE BASED ON AERIAL IMAGERY AND EXISTING PLANS. CONTRACTOR SHALL VERIFY LOCATIONS AND DEPTHS PRIOR TO STARTING WORK.
2. PROFILE SHOWN OF EXISTING FORCE MAIN IS APPROXIMATE AND IS BASED ON EXISTING PLANS. CONTRACTOR SHALL FIELD VERIFY PRIOR TO STARTING WORK.
3. ONE OF THE TWO FORCE MAINS SHALL BE AVAILABLE FOR SERVICE AT ALL TIMES.



P:\Donohue\WD6 - Force Main Cleaning\12.CADD\DesignFiles\0876\B34-SHT-PLAN.dgn

GENERAL NOTES:
1. LOCATIONS OF EXISTING FORCE MAIN AND CLEANOUT STRUCTURES ARE BASED ON AERIAL IMAGERY AND EXISTING PLANS. CONTRACTOR SHALL VERIFY LOCATIONS AND DEPTHS PRIOR TO STARTING WORK.
2. PROFILE SHOWN OF EXISTING FORCE MAIN IS APPROXIMATE AND IS BASED ON EXISTING PLANS. CONTRACTOR SHALL FIELD VERIFY PRIOR TO STARTING WORK.



P:\Donohue\WD6 - Force Main Cleaning\12.CADD\DesignFiles\0876\04-SHT-PLAN.dgn



m3
ENGINEERING GROUP

USER NAME = Mike.Brown
PLOT SCALE = 50 FEET PER INCH
PLOT DATE = 2/26/2025

DESIGNED - REK
DRAWN - MRB
CHECKED - JAG
DATE - 2/26/2025

REVISED -
REVISED -
REVISED -
REVISED -

STATE OF ILLINOIS
DEPARTMENT OF TRANSPORTATION

MISSOURI AVENUE PUMP STATION,
FORCE MAIN AND CLEANOUT LOCATIONS

SCALE: SHEET OF SHEETS STA. TO STA.

F.A.U. RTE. SECTION COUNTY TOTAL SHEETS SHEET NO.
VARIES 82-4PS-4, 29PS-2, 27PS-8 * 15 7
CONTRACT NO. 76F82
ILLINOIS FED. AID PROJECT

• ST. CLAIR AND MADISON

GENERAL NOTES:
1. LOCATIONS OF EXISTING FORCE MAIN AND CLEANOUT STRUCTURES ARE BASED ON AERIAL IMAGERY AND EXISTING PLANS. CONTRACTOR SHALL VERIFY LOCATIONS AND DEPTHS PRIOR TO STARTING WORK.
2. PROFILE SHOWN OF EXISTING FORCE MAIN IS APPROXIMATE AND IS BASED ON EXISTING PLANS. CONTRACTOR SHALL FIELD VERIFY PRIOR TO STARTING WORK.

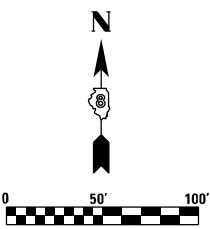
FROM MISSOURI AVE

RAILROAD

CLEANOUTS M3, M4 & M5 ARE ACCESSIBLE FROM EXCHANGE AVE BY HEADING WEST OR FROM MISSOURI AVE BY HEADING EAST ON A DIRT ROAD ALLOWING ACCESS TO THE BILLBOARDS ALONG THE HIGHWAY.

NOTE THE SECOND OPTION REQUIRES THE REMOVAL AND REPLACEMENT OF AN EXISTING FENCE.

FROM EXCHANGE AVE



SEE SHEET 9

CLEANOUT M5
RECORD 76099 C12
TOP: 419.2
FLOOR: 405.4

CLEANOUT M4
RECORD 76099 C11
TOP: 418.1
FLOOR: 404.4

CLEANOUT M3
RECORD 76099 C10
TOP: 412.1
FLOOR: 403.4

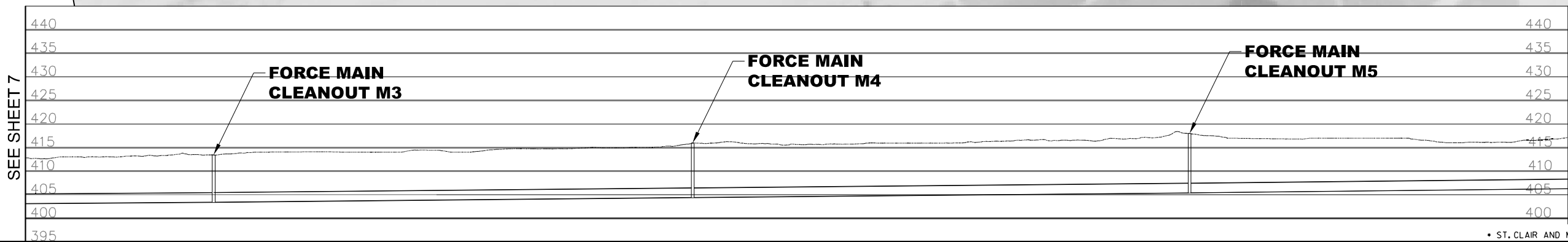
EXIT 2C

APPROXIMATE LOCATION OF EXISTING 24 INCH FORCE MAIN. CONTRACTOR TO FIELD VERIFY LOCATION.

I-55/64

CLEANOUTS M3, M4 & M5 ARE ALSO ACCESSIBLE FROM THE SHOULDER OF THE RAMP FROM I-55/64 TO MARTIN LUTHER KING JR BRIDGE.

SEE SHEET 7



P:\Donohue\WD\6 - Force Main Cleaning\12.CADD\DesignFiles\12B76B34-SHT-PLAN.dgn



m3
ENGINEERING GROUP

USER NAME = Mike.Brown
PLOT SCALE = 50 FEET PER INCH
PLOT DATE = 2/26/2025

DESIGNED - REK
DRAWN - MRB
CHECKED - JAG
DATE - 2/26/2025

REVISED -
REVISED -
REVISED -
REVISED -

STATE OF ILLINOIS
DEPARTMENT OF TRANSPORTATION

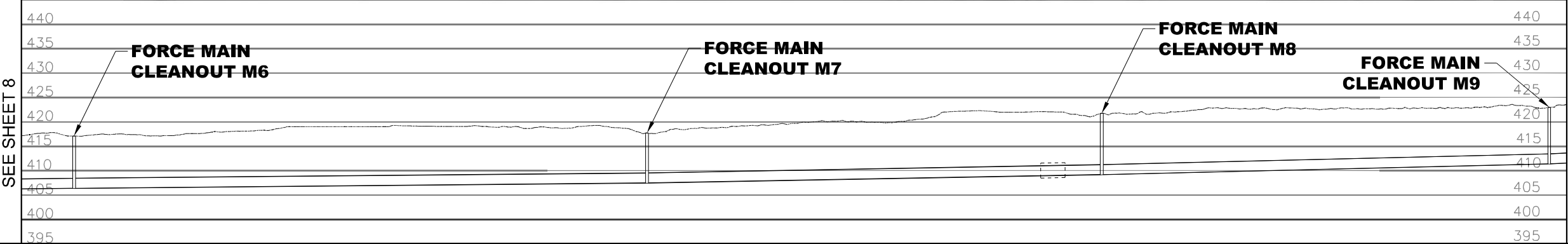
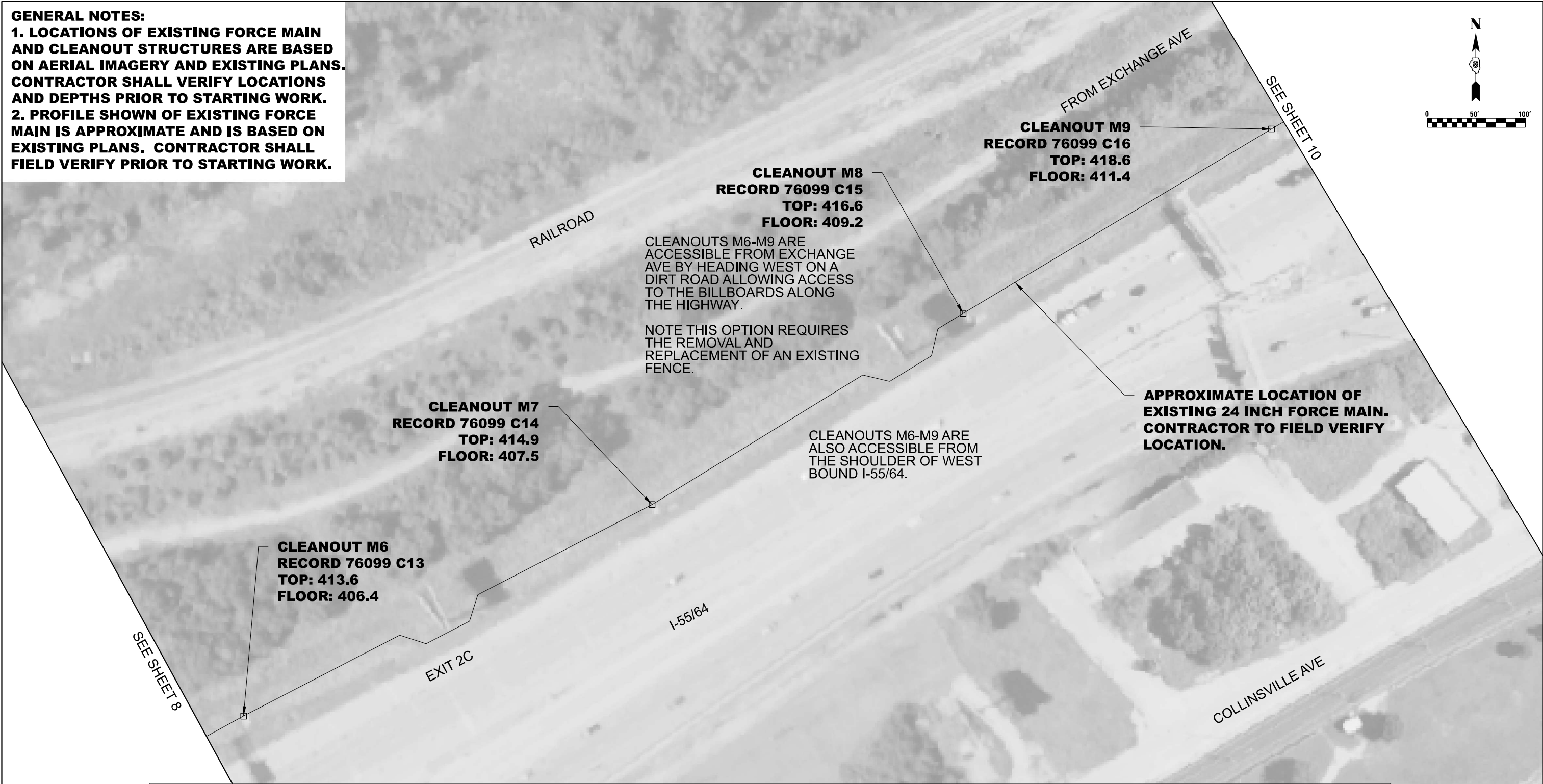
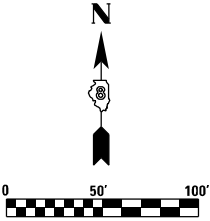
MISSOURI AVENUE PUMP STATION,
FORCE MAIN AND CLEANOUT LOCATIONS

SCALE: SHEET OF SHEETS STA. TO STA.

F.A.U. RTE. SECTION COUNTY TOTAL SHEETS SHEET NO.
VARIES 82-4PS-4, 29PS-2, 27PS-8 * 15 8
ILLINOIS FED. AID PROJECT CONTRACT NO. 76F82

• ST. CLAIR AND MADISON

GENERAL NOTES:
1. LOCATIONS OF EXISTING FORCE MAIN AND CLEANOUT STRUCTURES ARE BASED ON AERIAL IMAGERY AND EXISTING PLANS. CONTRACTOR SHALL VERIFY LOCATIONS AND DEPTHS PRIOR TO STARTING WORK.
2. PROFILE SHOWN OF EXISTING FORCE MAIN IS APPROXIMATE AND IS BASED ON EXISTING PLANS. CONTRACTOR SHALL FIELD VERIFY PRIOR TO STARTING WORK.



P:\Donohue\WD\6 - Force Main Cleaning\12.CADD\DesignFiles\0876\B34-SHT-PLAN.dgn



USER NAME = Mike.Brown	DESIGNED - REK	REVISED -
	DRAWN - MRB	REVISED -
PLOT SCALE = 50 FEET PER INCH	CHECKED - JAG	REVISED -
PLOT DATE = 2/26/2025	DATE - 2/26/2025	REVISED -

STATE OF ILLINOIS
DEPARTMENT OF TRANSPORTATION

MISSOURI AVENUE PUMP STATION,
FORCE MAIN AND CLEANOUT LOCATIONS

SCALE: SHEET OF SHEETS STA. TO STA.

F.A.U. RTE.	SECTION	COUNTY	TOTAL SHEETS	SHEET NO.
VARIES	82-4PS-4, 29PS-2, 27PS-8	*	15	9
CONTRACT NO. 76F82				
ILLINOIS FED. AID PROJECT				

• ST. CLAIR AND MADISON

GENERAL NOTES:
1. LOCATIONS OF EXISTING FORCE MAIN AND CLEANOUT STRUCTURES ARE BASED ON AERIAL IMAGERY AND EXISTING PLANS. CONTRACTOR SHALL VERIFY LOCATIONS AND DEPTHS PRIOR TO STARTING WORK.
2. PROFILE SHOWN OF EXISTING FORCE MAIN IS APPROXIMATE AND IS BASED ON EXISTING PLANS. CONTRACTOR SHALL FIELD VERIFY PRIOR TO STARTING WORK.

CLEANOUTS M10 & M11 ARE ACCESSIBLE FROM EXCHANGE AVE BY HEADING WEST ON A DIRT ROAD ALLOWING ACCESS TO THE BILLBOARDS ALONG THE HIGHWAY.

NOTE THIS OPTION REQUIRES THE REMOVAL AND REPLACEMENT OF AN EXISTING FENCE.

24 INCH FORCE MAIN DISCHARGE LOCATION TO EXISTING CONCRETE BOX STRUCTURE. CONTRACTOR TO FIELD VERIFY.

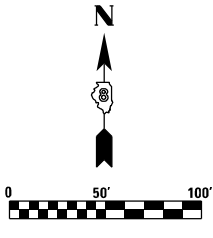
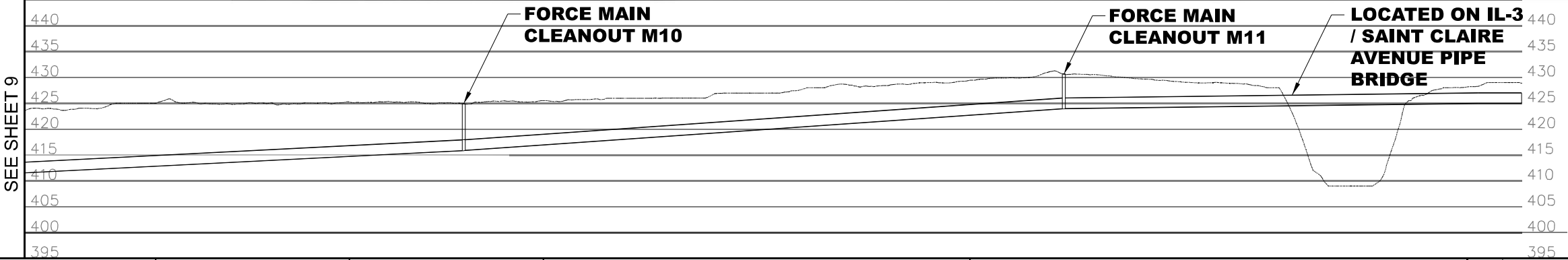
APPROXIMATE LOCATION OF EXISTING 24 INCH FORCE MAIN. CONTRACTOR TO FIELD VERIFY LOCATION.

**CLEANOUT M11
RECORD 76099 C18
TOP: 432.5
FLOOR: 424.0**

CLEANOUTS M10 & M11 ARE ALSO ACCESSIBLE FROM THE SHOULDER OF WEST BOUND I-55/64.

**CLEANOUT M10
RECORD 76099 C17
TOP: 423.0
FLOOR: 415.9**

SEE SHEET 9



P:\Donohue\WD\6 - Force Main Cleaning\12.CADD\DesignFiles\12B76134-SHT-PLAN.dgn



m3
ENGINEERING GROUP

USER NAME = Mike.Brown
PLOT SCALE = 50 FEET PER INCH
PLOT DATE = 2/26/2025

DESIGNED - REK
DRAWN - MRB
CHECKED - JAG
DATE - 2/26/2025

REVISED -
REVISED -
REVISED -
REVISED -

STATE OF ILLINOIS
DEPARTMENT OF TRANSPORTATION

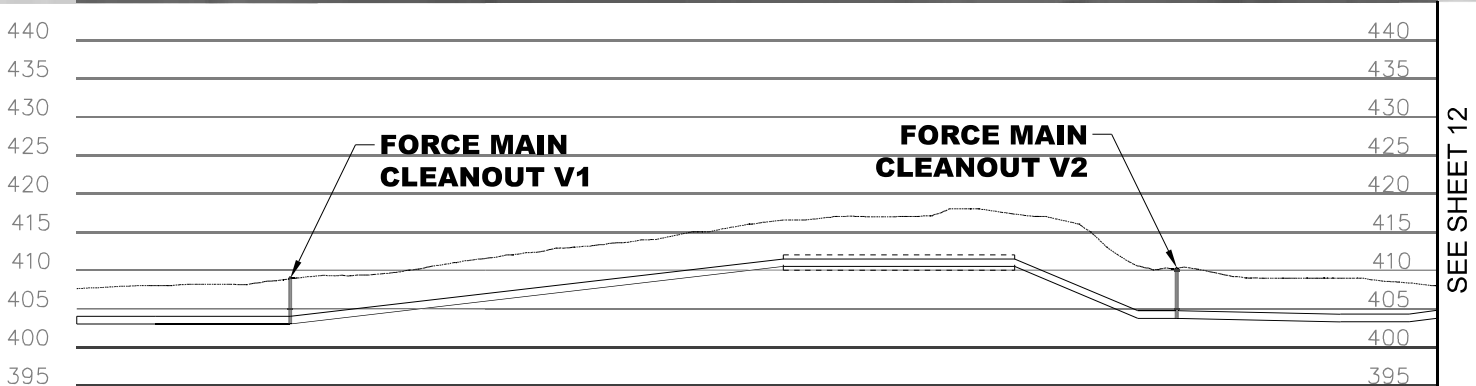
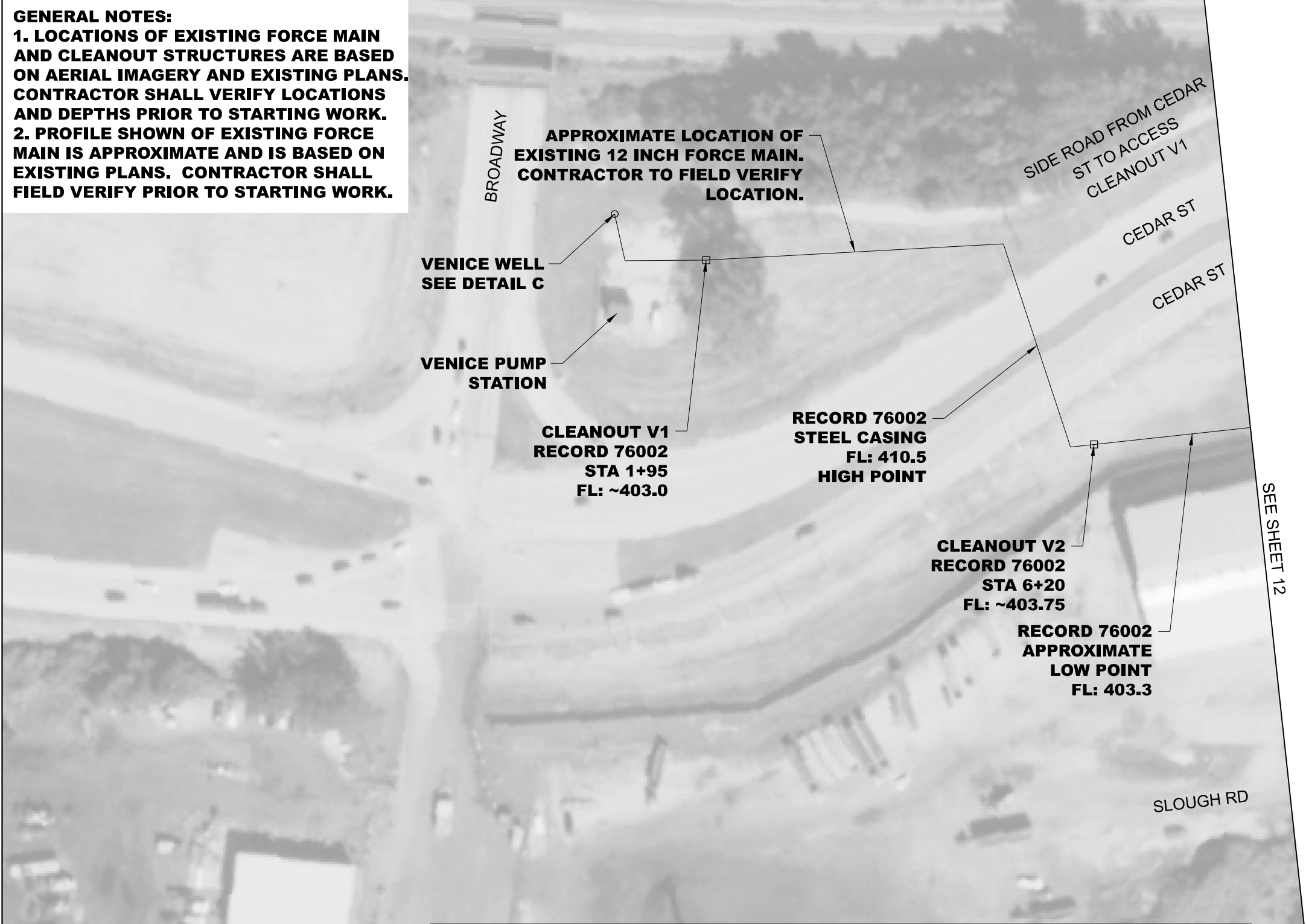
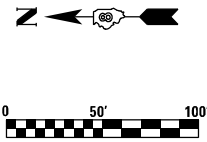
MISSOURI AVENUE PUMP STATION, FORCE
MAIN AND CLEANOUTS LOCATIONS

SCALE: SHEET OF SHEETS STA. TO STA.

F.A.U. RTE. SECTION COUNTY TOTAL SHEETS SHEET NO.
VARIES 82-4PS-4, 29PS-2, 27PS-8 * 15 10
CONTRACT NO. 76F82
ILLINOIS FED. AID PROJECT

• ST. CLAIR AND MADISON

GENERAL NOTES:
1. LOCATIONS OF EXISTING FORCE MAIN AND CLEANOUT STRUCTURES ARE BASED ON AERIAL IMAGERY AND EXISTING PLANS. CONTRACTOR SHALL VERIFY LOCATIONS AND DEPTHS PRIOR TO STARTING WORK.
2. PROFILE SHOWN OF EXISTING FORCE MAIN IS APPROXIMATE AND IS BASED ON EXISTING PLANS. CONTRACTOR SHALL FIELD VERIFY PRIOR TO STARTING WORK.



P:\Donohue\WD\6 - Force Main Cleaning\12.CADD\DesignFiles\12\B76\B76-5\12-PLN.dgn



m3
ENGINEERING GROUP

USER NAME = Mike.Brown
PLOT SCALE = 50 FEET PER INCH
PLOT DATE = 2/26/2025

DESIGNED - REK
DRAWN - MRB
CHECKED - JAG
DATE - 2/26/2025

REVISED -
REVISED -
REVISED -
REVISED -

STATE OF ILLINOIS
DEPARTMENT OF TRANSPORTATION

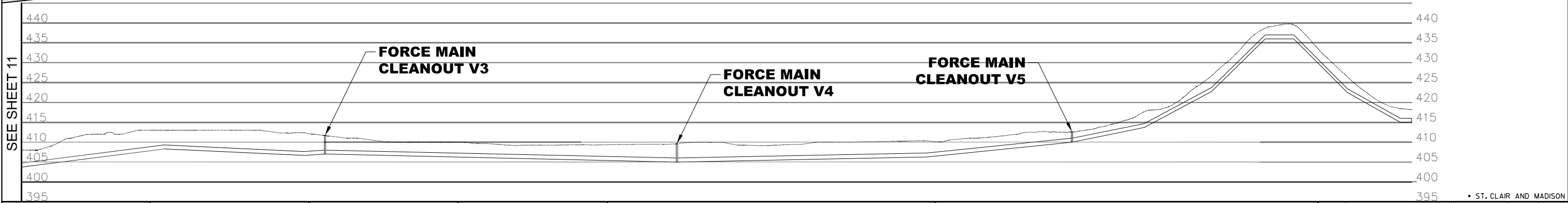
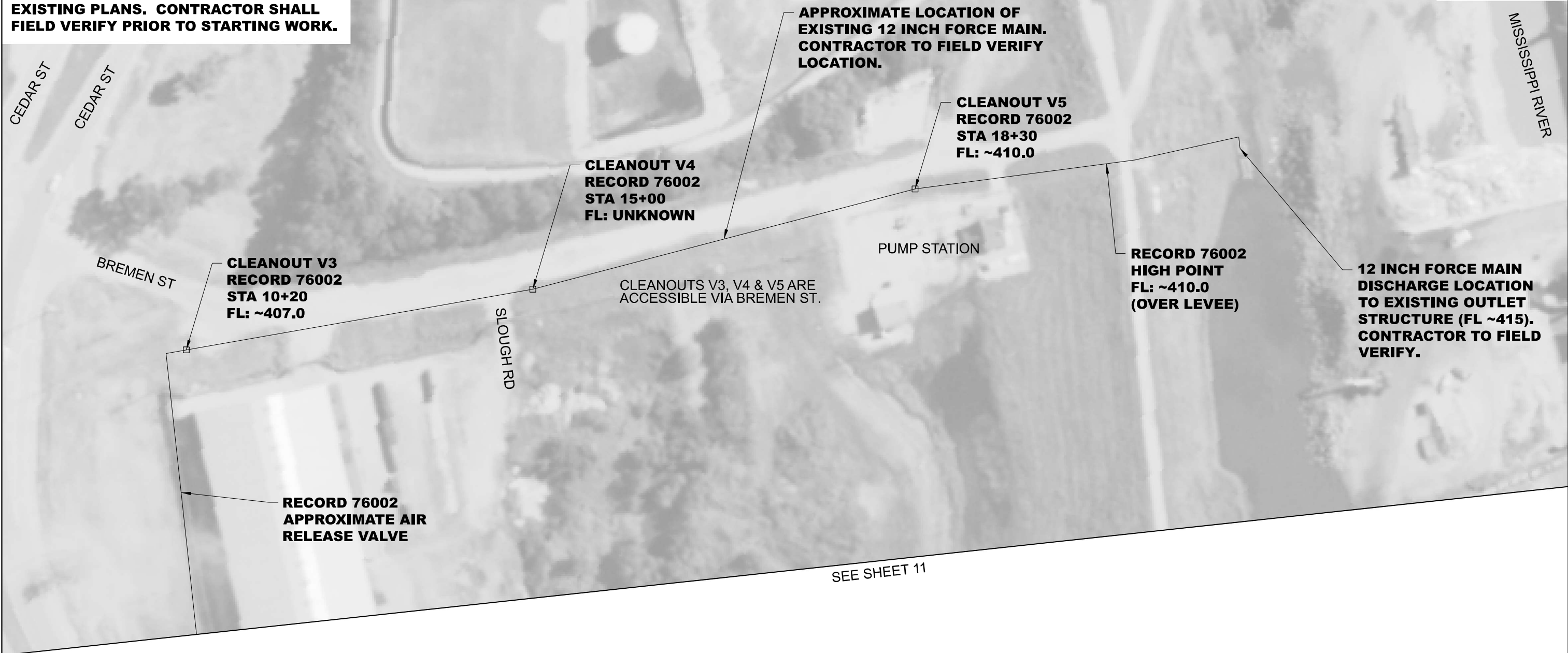
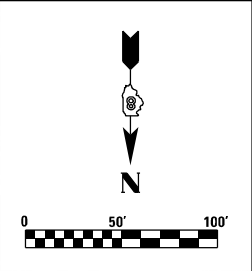
VENICE PUMP STATION, FORCE
MAIN AND CLEANOUTS LOCATIONS

SCALE: SHEET OF SHEETS STA. TO STA.

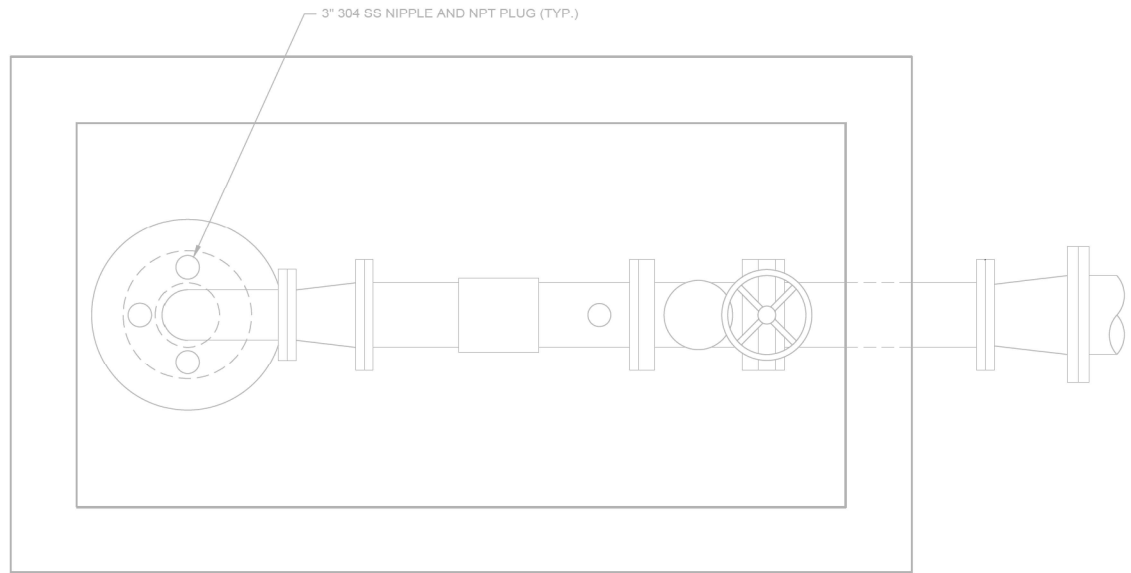
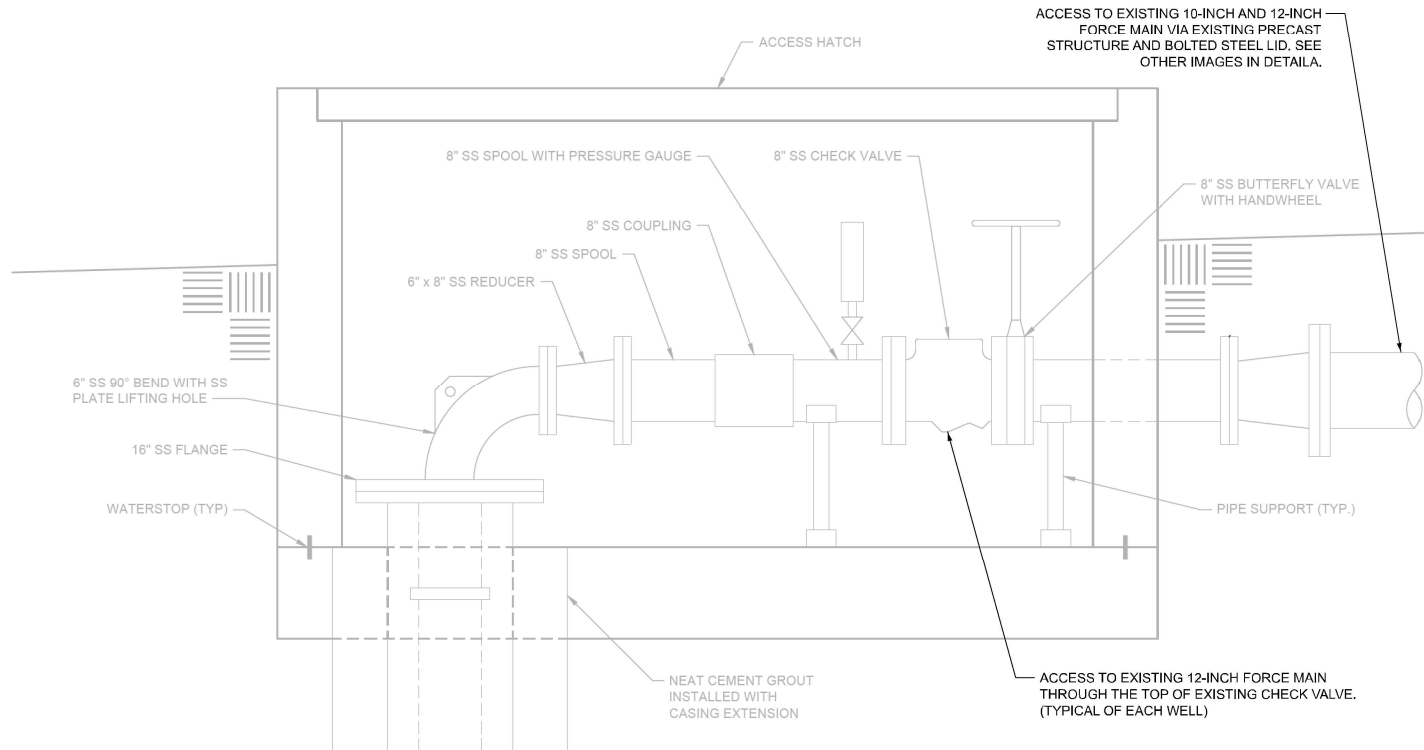
• ST. CLAIR AND MADISON

F.A.U. RTE.	SECTION	COUNTY	TOTAL SHEETS	SHEET NO.
VARIES	82-4PS-4, 29PS-2, 27PS-8	*	15	11
CONTRACT NO. 76F82				
ILLINOIS FED. AID PROJECT				

GENERAL NOTES:
1. LOCATIONS OF EXISTING FORCE MAIN AND CLEANOUT STRUCTURES ARE BASED ON AERIAL IMAGERY AND EXISTING PLANS. CONTRACTOR SHALL VERIFY LOCATIONS AND DEPTHS PRIOR TO STARTING WORK.
2. PROFILE SHOWN OF EXISTING FORCE MAIN IS APPROXIMATE AND IS BASED ON EXISTING PLANS. CONTRACTOR SHALL FIELD VERIFY PRIOR TO STARTING WORK.



P:\Donohue\WD\6 - Force Main Cleaning\12.CADD\DesignFiles\0876134-SHT-PLAN.dgn

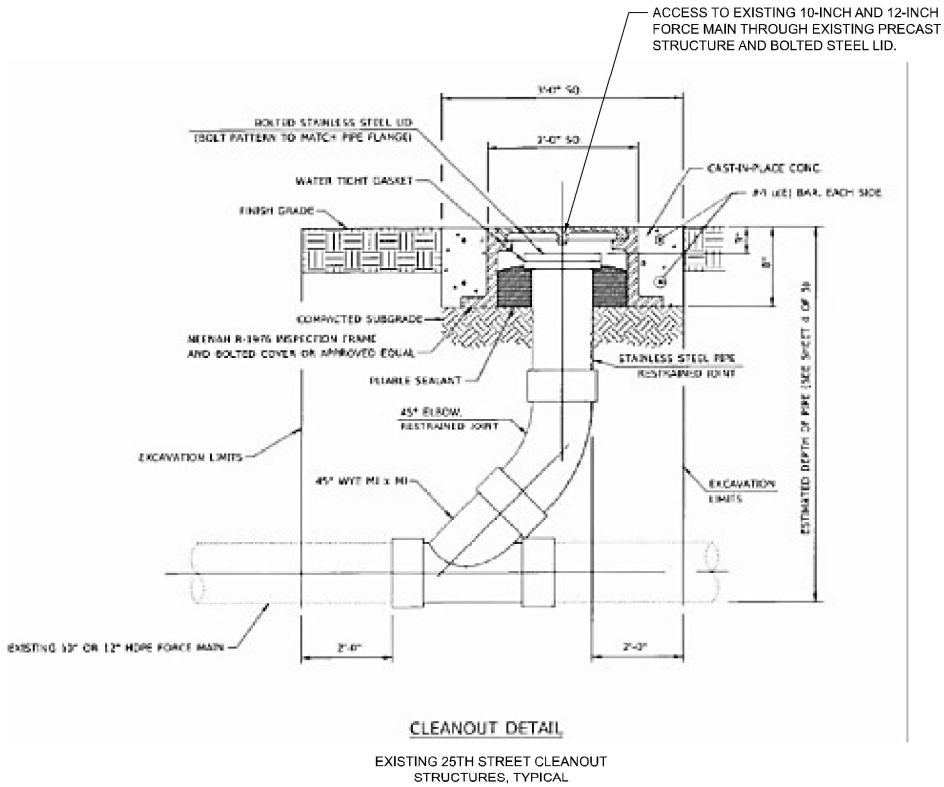


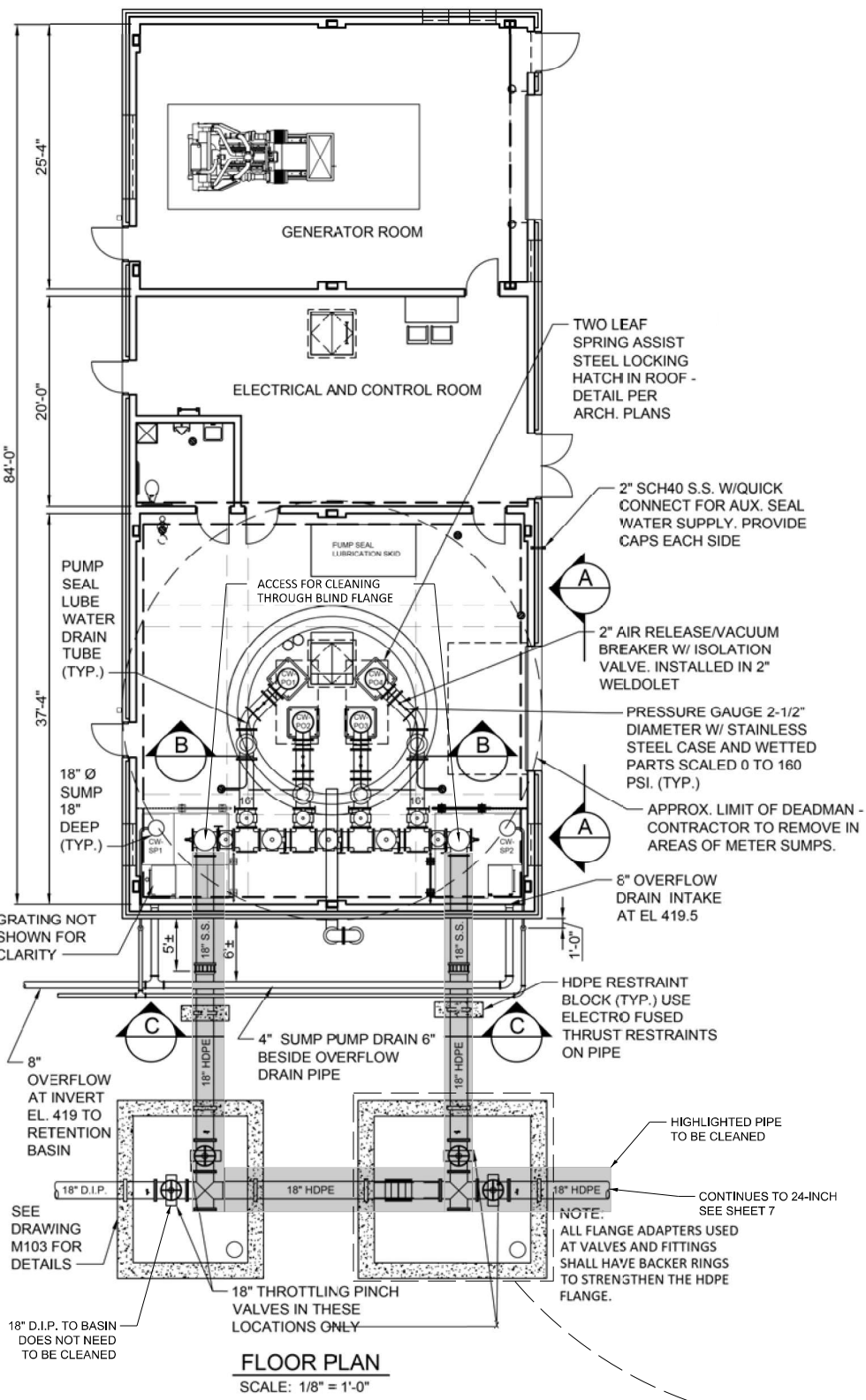
GENERAL NOTES:

1. CONTRACTOR SHALL COORDINATE WITH DEPARTMENT FOR SHUTDOWN OF EXISTING FACILITIES. SEE SPECIAL PROVISIONS FOR DETAILS.
2. CONTRACTOR SHALL SUPPORT EXISTING PIPING, VALVES, AND APPARATUS WITHIN THE VAULT DURING ACCESS FOR CLEANING.
3. ACCESS TO THE FORCE MAIN AT EACH WELL HOUSING IS THROUGH THE LID, OR TOP OF EXISTING CHECK VALVE. CONTRACTOR SHALL PROVIDE AND INSTALL A NEW CHECK VALVE GASKET SHOULD THE EXISTING GASKET BE INSUFFICIENT OR DAMAGED DUE TO REMOVAL BY CONTRACTOR.
4. CONTRACTOR SHALL RECONNECT ALL EXISTING PIPING, VALVES, AND APPARATUS UPON COMPLETION OF WORK. WORK IS NOT CONSIDERED COMPLETE UNTIL OWNER INSPECTS AND CONFIRMS FACILITIES ARE IN PRE-WORK CONDITION.
5. CONTRACTOR SHALL RESTORE EXISTING FACILITIES BACK TO EXISTING CONDITIONS UPON COMPLETION OF WORK.

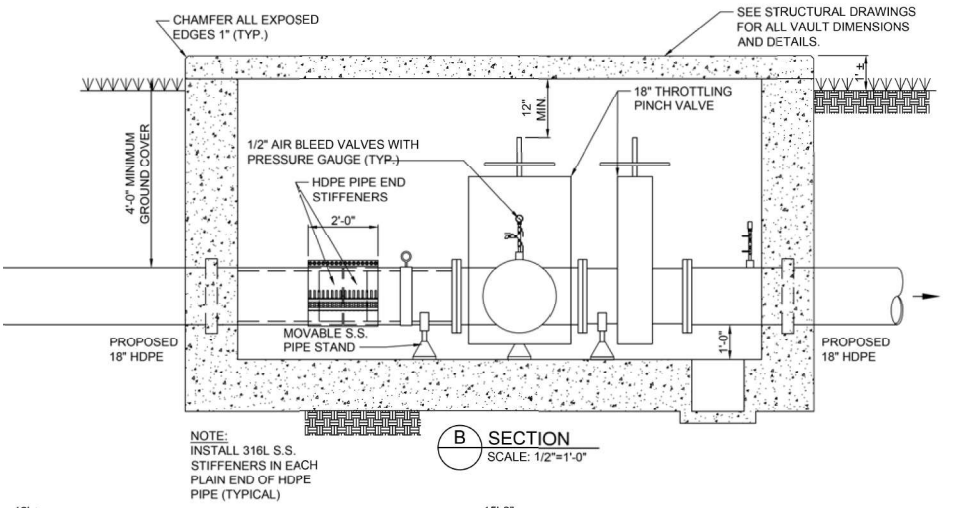
DETAIL A

25TH STREET DETAILS

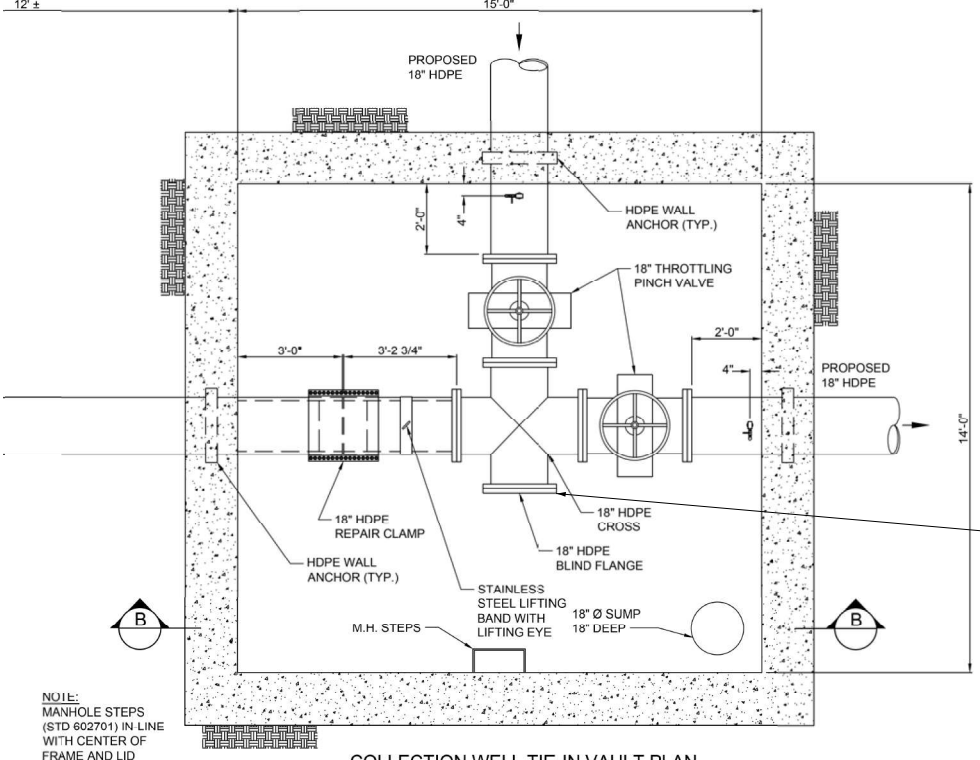




FLOOR PLAN
SCALE: 1/8" = 1'-0"



SECTION B
SCALE: 1/2" = 1'-0"



COLLECTION WELL TIE-IN VAULT PLAN
SCALE: 1/2" = 1'-0" LOCATION: C2

GENERAL NOTES:

1. CONTRACTOR SHALL COORDINATE WITH DEPARTMENT FOR SHUTDOWN OF EXISTING FACILITIES. PROVIDE DEPARTMENT WITH A MINIMUM OF 48 HOURS NOTICE.
2. CONTRACTOR SHALL SUPPORT EXISTING PIPING, VALVES, AND APPARATUS WHEN REMOVING EXISTING BLIND FLANGES OR OTHER EXISTING EQUIPMENT FOR ACCESS.
3. CONTRACTOR SHALL RECONNECT ALL EXISTING PIPING, VALVES, AND APPARATUS UPON COMPLETION OF WORK. WORK IS NOT CONSIDERED COMPLETE UNTIL OWNER INSPECTS FACILITIES ARE IN PRE-WORK CONDITION.
4. CONTRACTOR SHALL RESTORE EXISTING FACILITIES BACK TO EXISTING CONDITIONS UPON COMPLETION OF WORK.

DETAIL B
CONTRACT 76099 MISSOURI AVE WELL HOUSE

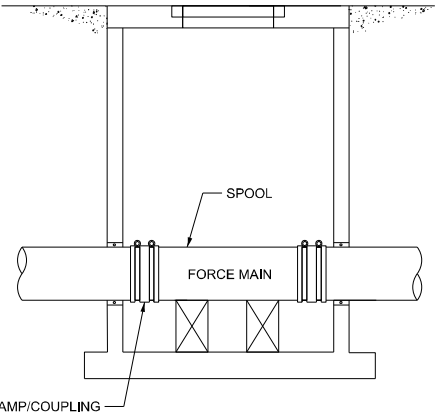


GENERAL NOTES:

- 1. CONTRACTOR SHALL COORDINATE WITH DEPARTMENT FOR SHUTDOWN OF EXISTING FACILITIES. SEE SPECIAL PROVISIONS FOR DETAILS.
- 2. CONTRACTOR SHALL SUPPORT EXISTING PIPING, VALVES, AND APPARATUS WITHIN THE VAULT DURING ACCESS FOR CLEANING.
- 3. ACCESS TO THE FORCE MAIN AT THE WELL HOUSING IS THROUGH THE LID, OR TOP OF EXISTING CHECK VALVE. CONTRACTOR SHALL PROVIDE AND INSTALL A NEW CHECK VALVE GASKET SHOULD THE EXISTING GASKET BE INSUFFICIENT OR DAMAGED DUE TO REMOVAL BY CONTRACTOR.
- 4. CONTRACTOR SHALL RECONNECT ALL EXISTING PIPING, VALVES, AND APPARATUS UPON COMPLETION OF WORK. WORK IS NOT CONSIDERED COMPLETE UNTIL OWNER INSPECTS AND CONFIRMS FACILITIES ARE IN PRE-WORK CONDITION.
- 5. CONTRACTOR SHALL RESTORE EXISTING FACILITIES BACK TO EXISTING CONDITIONS UPON COMPLETION OF WORK.

DETAIL C

CONTRACT 76G12 VENICE PUMP STATION



NOTE: CLAMPS ARE TO BE REUSED IF POSSIBLE. CONTRACTOR SHALL ORDER 6 SPARE CLAMPS FOR THE 12 INCH FORCE MAINS (POWERSEAL 3121 12B SBR) AND 2 SPARES FOR THE 24 INCH (POWERSEAL 3123 24A SBR). PARTS MAY BE DELIVERED DIRECTLY TO THE BOWMAN PUMP STATION.

DETAIL 1

GENERAL FORCEMAIN CLEANOUT STRUCTURE