

STATE OF ILLINOIS
DEPARTMENT OF TRANSPORTATION

F.A.P. RTE.	SECTION	COUNTY	TOTAL SHEETS	SHEET NO.
VAR	*	VAR	6	1
		ILLINOIS	CONTRACT NO. 66R45	

*R2 SFY ITS SMART WZ TECH 2025-01

D-93-072-25

INDEX OF SHEETS

- COVER SHEET
- GENERAL NOTES
- SUMMARY OF QUANTITIES
- SMART TRAFFIC MONITORING SYSTEM SET UP DETAIL
- REAL TIME TRAFFIC CONTROL SET UP DETAIL
- REAL TIME TRAFFIC CONTROL SIGN DETAIL

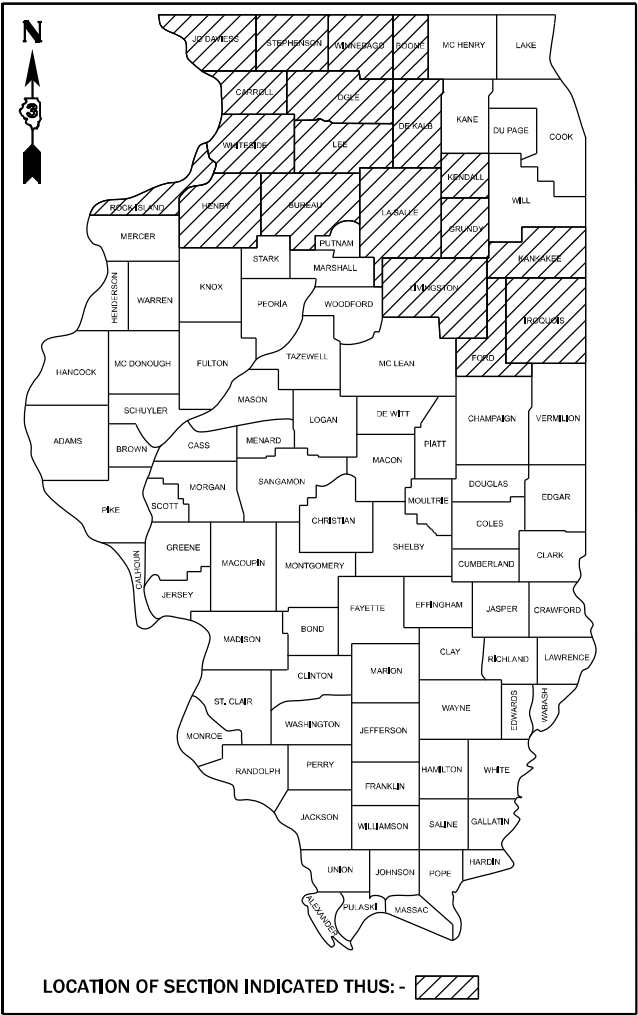
LIST OF ILLINOIS DOT HIGHWAY STANDARDS

- | | |
|-----------|---|
| 000001-08 | STANDARD SYMBOLS, ABBREVIATIONS AND PATTERNS |
| 001006 | DECIMAL OF AN INCH AND OF A FOOT |
| 701001-02 | OFF-ROAD OPERATIONS 2L, 2W, MORE THAN 15' AWAY |
| 701101-05 | OFF-ROAD OPERATIONS, MULTILANE, 15' TO 24" FROM PAVEMENT EDGE |
| 701106-02 | OFF-ROAD OPERATIONS, MULTILANE, MORE THAN 15' AWAY |
| 701426-09 | LANE CLOSURE, MULTILANE INTERMITTENT OR MOVING OPERATION, FOR SPEEDS ≥ 45 MPH |
| 701901-10 | TRAFFIC CONTROL DEVICES |

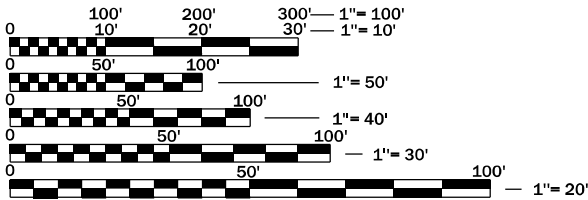
PROPOSED
HIGHWAY PLANS

FAI VARIOUS ROUTES
SECTION R2 SFY ITS SMART WZ TECH 2025-01
PROJECT: HSIP-VLHJ(947)
ITS - SMART WORK ZONE TECHNOLOGY
TRAFFIC MANAGEMENT
VARIOUS COUNTIES

C-93-105-25



LOCATION OF SECTION INDICATED THUS: - [shaded box]



FULL SIZE PLANS HAVE BEEN PREPARED USING STANDARD ENGINEERING SCALES. REDUCED SIZED PLANS WILL NOT CONFORM TO STANDARD SCALES. IN MAKING MEASUREMENTS ON REDUCED PLANS, THE ABOVE SCALES MAY BE USED.

J.U.L.I.E.
JOINT UTILITY LOCATION INFORMATION FOR EXCAVATION
1-800-892-0123
OR 811

PROJECT ENGINEER: NICK SPENCE, P.E.
UNIT CHIEF: BRANDON CRISS
DISTRICT 3 NO. (815) 434-6131
CONTRACT NO. 66R45

GROSS & NET LENGTH = VARIOUS SPOT LOCATIONS

STATE OF ILLINOIS DEPARTMENT OF TRANSPORTATION	
SUBMITTED	March 31, 2025
	<i>Tasha Thompson</i> REGIONAL ENGINEER
	May 9, 2025
	<i>See [Signature]</i> ENGINEER OF DESIGN AND ENVIRONMENT
	May 9, 2025
	<i>[Signature]</i> DIRECTOR OF HIGHWAYS PROJECT IMPLEMENTATION

PRINTED BY THE AUTHORITY
OF THE STATE OF ILLINOIS

GENERAL NOTES

THE LOCATIONS OF THE DELIVERY, SETUP, MAINTENANCE, AND REMOVAL OF THE SMART TRAFFIC MONITORING SYSTEM SHALL BE DETERMINED BY THE DISTRICT 3 OPERATIONS OFFICE (815-434-6131).

ANY CALL-OUT MAY BE CANCELLED AT THE DEPARTMENT'S DISCRETION.

COMMITMENTS:
NONE

STATE OF ILLINOIS
DEPARTMENT OF TRANSPORTATION
DISTRICT THREE
AS BUILT INFORMATION

SUPERVISING CONSTRUCTION FIELD ENGINEER

RESIDENT ENGINEER / TECHNICIAN

START & END DATES
OF CONSTRUCTION:

INSPECTORS:

MODEL: sheet 2 [Sheet]
FILE NAME: c:\p\work\pwikolismur.kinfe@illinois.gov\1060157\10366R45-shit-cover.dgn

	USER NAME = Smur.Kinfe	DESIGNED -	REVISED -	STATE OF ILLINOIS DEPARTMENT OF TRANSPORTATION	GENERAL NOTES			F.A.P. RTE.	SECTION	COUNTY	TOTAL SHEETS	SHEET NO.
		DRAWN -	REVISED -					VAR	*	VAR	6	2
		CHECKED -	REVISED -					CONTRACT NO. 66R45				
	PLOT DATE = 3/31/2025	DATE -	REVISED -		SCALE:	SHEET 1	OF 1 SHEETS	STA.	TO STA.	ILLINOIS FED. AID PROJECT		

MODEL: sheet 3 [Sheet]
FILE NAME: c:\pdk_work\pdk\dmsmur.kinfo@illinois.gov\d1060157\D366R45-sh1t-cover.dgn

	USER NAME	= Smur.Kinfo	DESIGNED	-	REVISED	-
			DRAWN	-	REVISED	-
			CHECKED	-	REVISED	-
	PLOT DATE	= 3/31/2025	DATE	-	REVISED	-

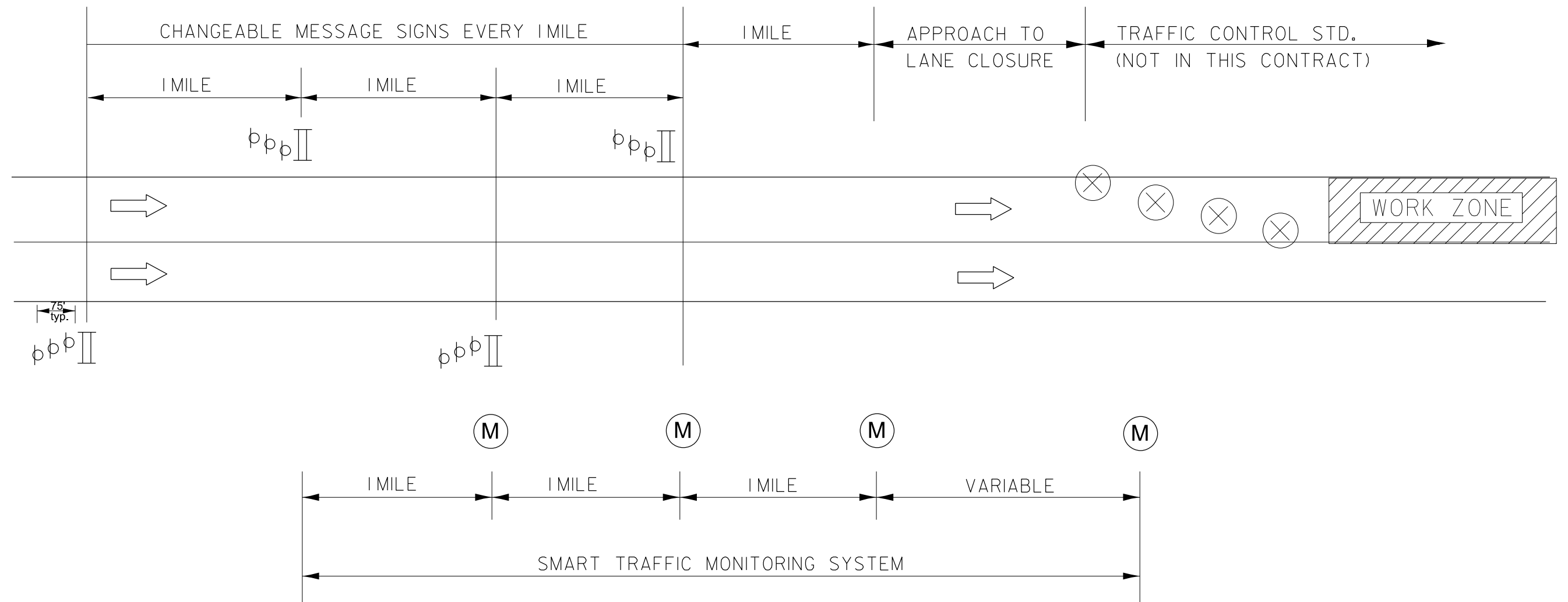
STATE OF ILLINOIS DEPARTMENT OF TRANSPORTATION	SUMMARY OF QUANTITIES					
	SCALE:	SHEET 1	OF 1	SHEETS	STA.	TO STA.

F.A.P. RTE.	SECTION	COUNTY	TOTAL SHEETS	SHEET NO.
VAR	*	VAR	6	3
CONTRACT NO. 66R45				

		ILLINOIS	FED. AID PROJECT
*R2 SFY ITS SMART WZ TECH 2025-01			

90% FED
10% STATE

CODE NO.	ITEM	UNIT	TOTAL QUANTITY	CONSTRUCTION CODE	
				District 2	District 3
				SAFETY	SAFETY
				0021 RURAL	0021 RURAL
X1400386	RELOCATE EXISTING WIRELESS VEHICLE DETECTION SYSTEM	EACH	25	6	19
X7010239	CHANGEABLE MESSAGE SIGN (SPECIAL)	CAL WK	105	12	93
X7011852	REAL-TIME TRAFFIC CONTROL SYSTEM	WEEK	65	12	53
X7011858	REAL-TIME TRAFFIC CONTROL SENSOR UNIT	WEEK	195	36	159
X8570002	SMART TRAFFIC MONITORING SYSTEM	CAL WK	10	0	10
X8570004	SMART TRAFFIC MONITORING DEVICE	CAL WK	40	0	40



NOTES:

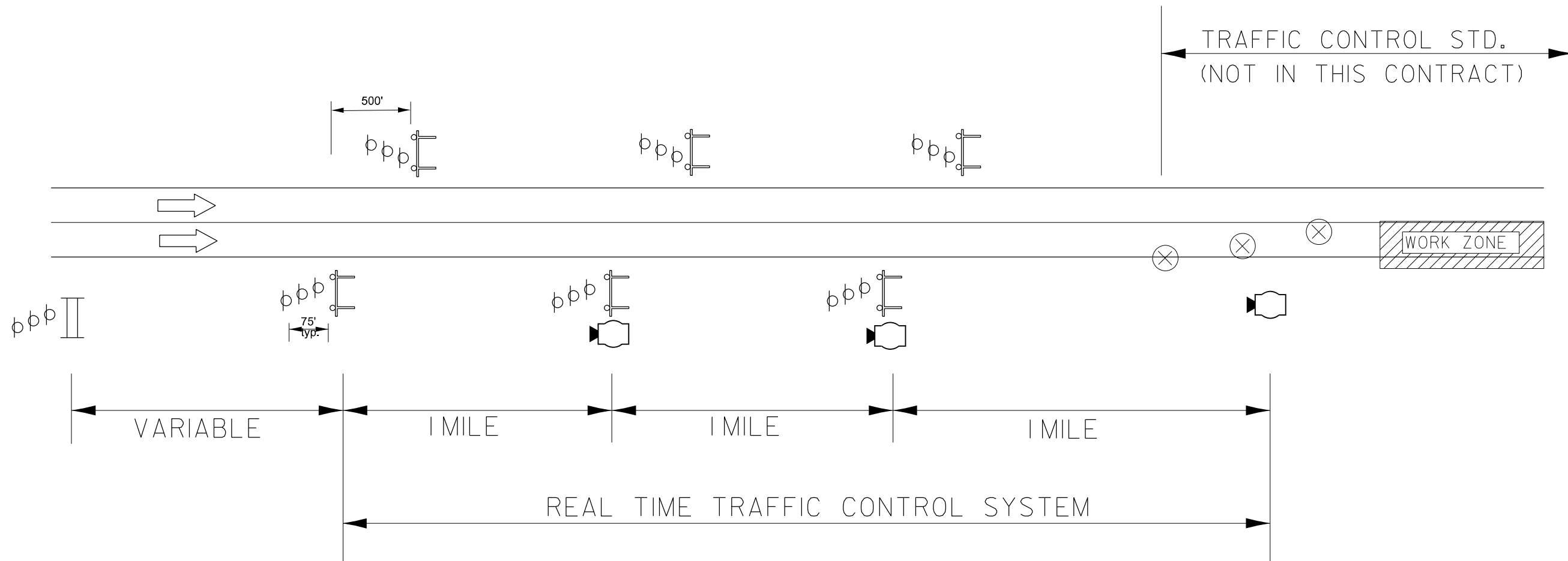
- ① ACTUAL LOCATION OF SMART MONITORING DEVICES SHALL BE BASED ON MANUFACTURER'S SPECIFICATIONS AND RECOMMENDATIONS ALONG WITH THE SPECIAL PROVISIONS AND AS DIRECTED BY THE ENGINEER.
- ② MODIFICATIONS MAY BE NECESSARY TO ACCOMODATE SPECIFIC CLOSURES. ALL CHANGES WILL BE APPROVED BY THE ENGINEER.

LEGEND





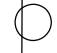
- II PORTABLE CHANGEABLE MESSAGE SIGN (SPECIAL)
- M SMART TRAFFIC MONITORING DEVICE
- X DRUM/BARRICADES PER APPLICABLE STND (BY OTHERS)
- DRUM WITH MONODIRECTIONAL FLASHING LIGHT.

MODEL: sheet 4 [Sheet]
FILE NAME: c:\p\work\wisconsin\smur.kinfe@illinois.gov\1060157\0366R45-shit-cover.dgn

	USER NAME = Smur.Kinfe	DESIGNED -	REVISED -	STATE OF ILLINOIS DEPARTMENT OF TRANSPORTATION	SMART TRAFFIC MONITORING SYSTEM DETAIL				F.A.P. RTE.	SECTION	COUNTY	TOTAL SHEETS	SHEET NO.
		DRAWN -	REVISED -						VAR	*	VAR	6	4
		CHECKED -	REVISED -						CONTRACT NO. 66R45				
	PLOT DATE = 3/31/2025	DATE -	REVISED -		SCALE:	SHEET 1	OF 1	SHEETS	STA.	TO STA.	ILLINOIS FED. AID PROJECT		



LEGEND

-  PORTABLE CHANGEABLE MESSAGE SIGN (SPECIAL)
-  REAL TIME TRAFFIC SENSOR
-  WARNING SIGN WITH WIGWAG LIGHTS
-  DRUM/BARRICADES PER APPLICABLE STND (BY OTHERS)
-  DRUM WITH MONODIRECTIONAL FLASHING LIGHT.

NOTES:

- ① ACTUAL LOCATION OF REAL TIME MONITORING DEVICES SHALL BE BASED ON MANUFACTURER'S SPECIFICATIONS AND RECOMMENDATIONS ALONG WITH THE SPECIAL PROVISIONS AND AS DIRECTED BY THE ENGINEER.
- ② MODIFICATIONS MAY BE NECESSARY TO ACCOMODATE SPECIFIC CLOSURES. ALL CHANGES WILL BE APPROVED BY THE ENGINEER.

MODEL: sheet 5 (Sheet)
FILE NAME: c:\p\work\p\work\smur.kinfe@illinois.gov\1060157\1060157-366R45-shit-cover.dgn

USER NAME = Smur.Kinfe	DESIGNED -	REVISED -
	DRAWN -	REVISED -
	CHECKED -	REVISED -
PLOT DATE = 3/31/2025	DATE -	REVISED -

STATE OF ILLINOIS
DEPARTMENT OF TRANSPORTATION

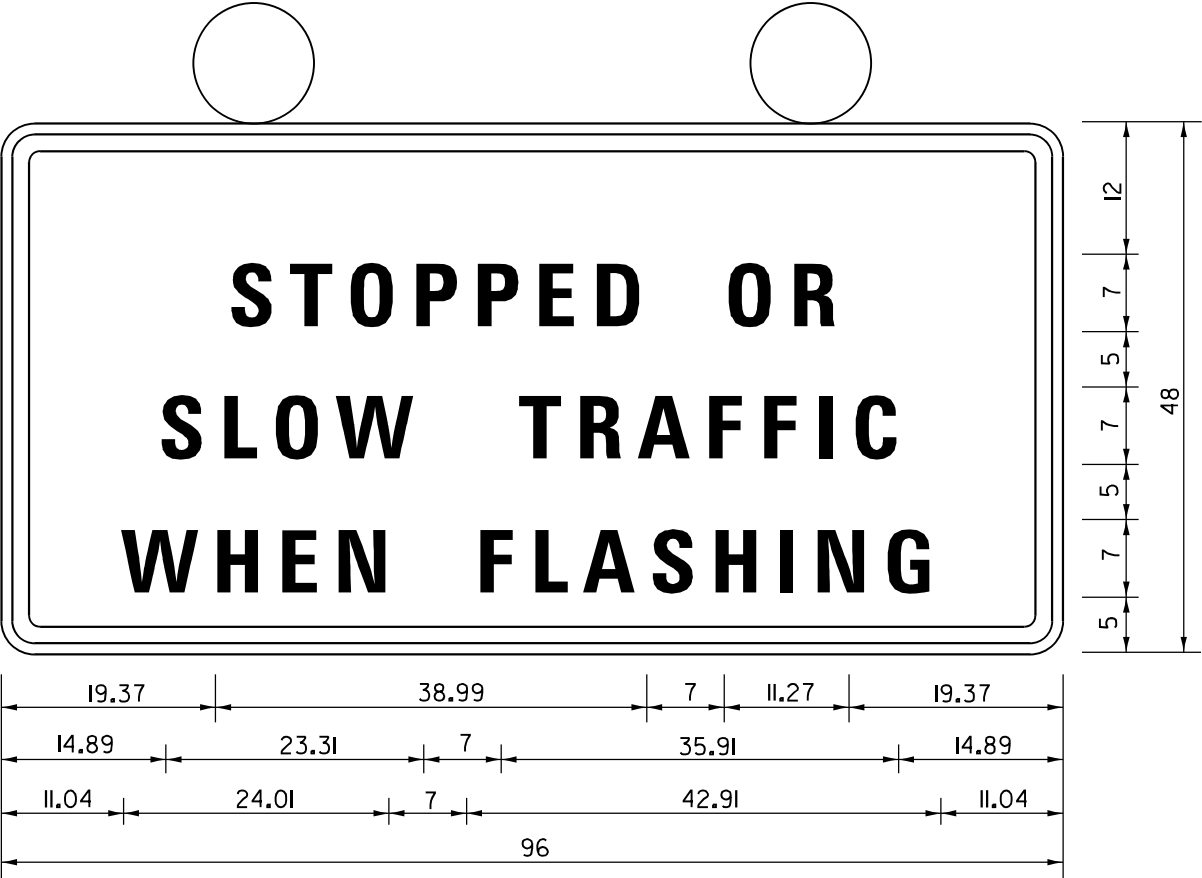
REAL TIME TRAFFIC CONTROL DETAIL

SCALE: SHEET 1 OF 1 SHEETS STA. TO STA.

F.A.P. RTE.	SECTION	COUNTY	TOTAL SHEETS	SHEET NO.
VAR	*	VAR	6	5
CONTRACT NO. 66R45				
ILLINOIS FED. AID PROJECT				

*R2 SFY ITS SMART WZ TECH 2025-01

MODEL: sheet 6 (Sheet)
FILE NAME: c:\pdk_work\pdk\dmsmur.kinfe@illinois.gov\d1060157\D366R45-shit-cover.dgn



Stopped Or Slow Traffic When Flashing; 2.25" Radius, 1.00" Border, 0.63" Indent, Black on Orange;
"STOPPED OR" D 2K; "SLOW TRAFFIC" D 2K; "WHEN FLASHING" D 2K;

TABLE OF LETTER AND OBJECT LEFTS

S 19.37	T 24.69	O 29.94	P 36.45	P 42.26	E 48.07	D 53.60	O 65.36	R 71.87			
S 14.89	L 20.84	O 26.09	W 31.97	T 45.20	R 50.59	A 55.91	F 62.91	F 68.30	I C 73.69	76.35	
W 11.04	H 18.32	E 24.76	N 30.29	F 42.05	L 47.44	A 52.20	S 58.71	H 64.66	I N 71.10	G 73.90	80.20

RTTC SIGN DETAIL

EXACT LOCATIONS OF SIGNS AND OTHER RTTC SENSOR UNIT
EQUIPMENT SHALL BE DETERMINED AS DETAILED IN SPECIAL
PROVISION FOR REAL-TIME TRAFFIC CONTROL SYSTEM

SIGNS TO BE EQUIPPED WITH FLASHERS (SEE SPECIAL PROVISION)

	USER NAME = Smur.Kinfe	DESIGNED -	REVISED -	STATE OF ILLINOIS DEPARTMENT OF TRANSPORTATION	REAL TIME TRAFFIC CONTROL SIGN DETAIL			F.A.P. RTE.	SECTION	COUNTY	TOTAL SHEETS	SHEET NO.
		DRAWN -	REVISED -					VAR	*	VAR	6	6
		CHECKED -	REVISED -					CONTRACT NO. 66R45				
	PLOT DATE = 3/31/2025	DATE -	REVISED -		SCALE:	SHEET 1	OF 1 SHEETS	STA.	TO STA.	ILLINOIS FED. AID PROJECT		