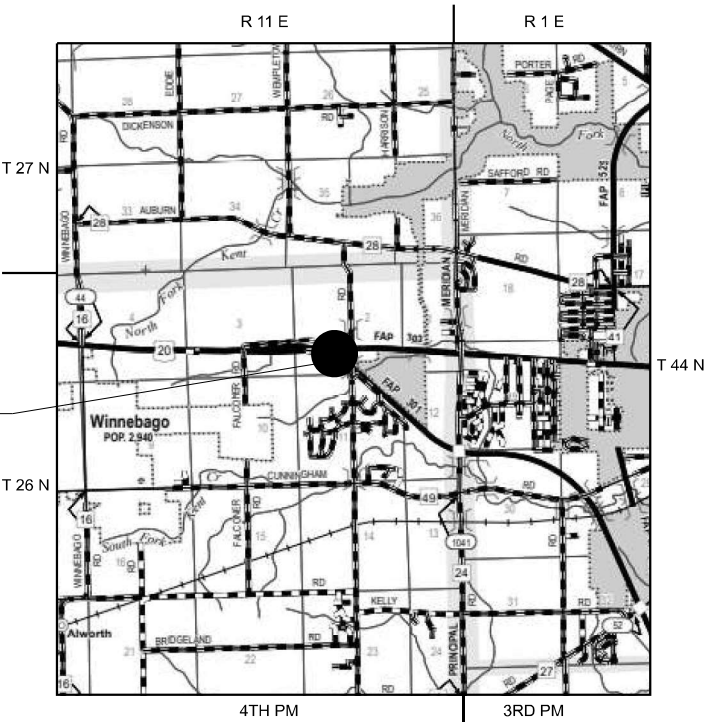


STATE OF ILLINOIS
DEPARTMENT OF TRANSPORTATION

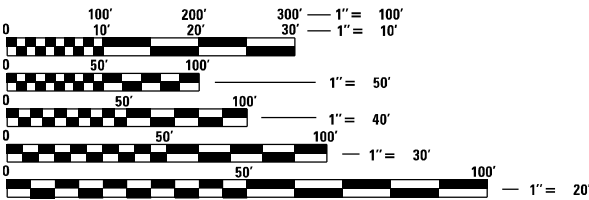
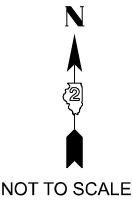
PROPOSED
HIGHWAY PLANS

FAP 301 (US 20)
SECTION (1-1HB)BDR
PROJECT
BRIDGE REPAIR
MAINTENANCE OF TRAFFIC
WINNEBAGO COUNTY

C-92-200- 24



EXISTING STRUCTURE LOCATION
SN 101-0046 3-SPAN CROSSING
EB BUS. US 20. STEEL GIRDER
SUPERSTRUCTURE WITH OPEN
ABUTS AND CONCRETE PIERS.
BACK TO BACK LENGTH = 264'-6"
OUT TO OUT WIDTH = 37'-1"



FULL SIZE PLANS HAVE BEEN PREPARED USING STANDARD
ENGINEERING SCALES. REDUCED SIZED PLANS WILL NOT
CONFORM TO STANDARD SCALES. IN MAKING MEASUREMENTS
ON REDUCED PLANS, THE ABOVE SCALES MAY BE USED.

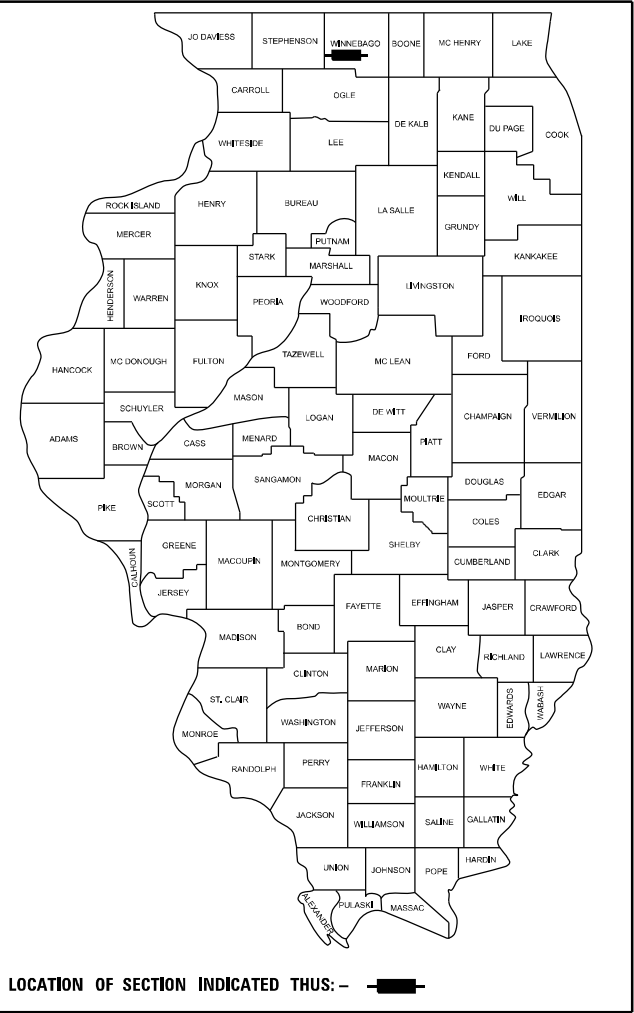
J.U.L.I.E.
JOINT UTILITY LOCATION INFORMATION FOR EXCAVATORS
1-800-892-0123
OR 811

PROJECT ENGINEER SCOTT WYATT, PE, SE
PROJECT MANAGER DERRICK LOPEZ, PE

CONTRACT NO. 64U00

GROSS LENGTH = 264.10 FT. = 0.050 MILE
NET LENGTH = 264.10 FT. = 0.050 MILE

F.A.P. RTE.	SECTION	COUNTY	TOTAL SHEETS	SHEET NO.
301	(1-1HB)BDR	WINNEBAGO	25	1
		ILLINOIS	CONTRACT NO. 64U00	



STATE OF ILLINOIS
DEPARTMENT OF TRANSPORTATION

SUBMITTED March 27 20 25

Shika Thompson
REGIONAL ENGINEER

May 9 20 25
Scott A. Etkin
ENGINEER OF DESIGN AND ENVIRONMENT

May 9 20 25
Derrick Lopez
DIRECTOR OF HIGHWAYS PROJECT IMPLEMENTATION

PRINTED BY THE AUTHORITY
OF THE STATE OF ILLINOIS

SHEET INDEX

1. COVER
2. GENERAL NOTES/ CONSTRUCTION SEQUENCE/MOT PLAN INDEX
- 3-4. SUMMARY OF QUANTITIES
5. STAGING TYPICAL SECTION
- 6-9 MAINTENANCE OF TRAFFIC PLANS
10. PAVEMENT MARKING PLAN
11. PLAN AND ELEVATION
12. TYPICAL SECTION
13. JOINT REMOVAL AND REPLACEMENT DETAILS
14. BARRIER DETAILS
15. PREFORMED JOINT STRIP SEAL DETAILS
16. BAR SPLICERS
- 17-20. DISTRICT 2 STANDARD 34.1
- 21-24. DISTRICT 2 STANDARD 41.1
25. DISTRICT 2 STANDARD 55.1

STATE HIGHWAY STANDARDS

- 000001-08 STANDARD SYMBOLS, ABBREVIATIONS AND PATTERNS
- 701101-05 OFF ROAD MULTILANE OPERATIONS 15' TO 24" FROM PAVEMENT EDGE
- 701106-02 OFF-ROAD OPERATIONS, MULTILANE, MORE THAN 15' AWAY
- 701400-12 APPROACH TO LANE CLOSURE, FREEWAY/EXPRESSWAY
- 701401-13 LANE CLOSURE, FREEWAY/EXPRESSWAY
- 701402-12 LANE CLOSURE, FREEWAY/EXPRESSWAY, WITH BARRIER
- 701426-09 LANE CLOSURE, MULTILANE, INTERMITTENT OR MOVING OPER., FOR SPEEDS > 45 MPH
- 701901-10 TRAFFIC CONTROL DEVICES
- 704001-08 TEMPORARY CONCRETE BARRIER
- 780001-05 TYPICAL PAVEMENT MARKINGS
- 782006-01 GUARDRAIL AND BARRIER WALL REFLECTOR MOUNTING DETAILS

MAINTENANCE OF TRAFFIC GENERAL NOTES

1. THE MAINTENANCE OF TRAFFIC CONTROL (MOT) PLANS SHALL SERVE AS A GUIDE FOR SAFE DIVERSION OF TRAFFIC DURING EXECUTION OF THIS CONTRACT. HOWEVER, THE CONTRACTOR MAY MODIFY THE MOT PLANS TO MEET CONSTRUCTION NEEDS, BUT NOT AT THE EXPENSE OF PUBLIC SAFETY OR CONVENIENCE. ANY CHANGES TO THE MOT PLANS SHALL BE SUBMITTED TO THE ENGINEER FOR APPROVAL.
2. THE ENGINEER SHALL BE INFORMED 48 HOURS IN ADVANCE OF ANY PROPOSED CHANGE TO THE MOT PLANS.
3. ALL EXISTING PAVEMENT MARKINGS IN CONFLICT WITH THE MAINTENANCE OF TRAFFIC STRIPING SHALL BE REMOVED TO THE LIMITS SHOWN IN THE PLANS.
4. ALL TEMPORARY PAVEMENT MARKING WHICH CONFLICTS WITH THE NEXT STAGE OR FINAL STRIPING SHALL BE REMOVED TO THE LIMITS SPECIFIED IN THE PLANS AND IN THE SCHEDULES OF PAVEMENT MARKING.
5. ALL TRAFFIC CONTROL DEVICES USED FOR THE MAINTENANCE OF TRAFFIC, AS DETAILED ON THE PLANS OR HIGHWAY STANDARD, SHALL BE REFLECTORIZED PRIOR TO INSTALLATION AND CLEANED AS SPECIFIED IN THE MAINTENANCE OF TRAFFIC SPECIAL PROVISIONS OR AS DIRECTED BY THE ENGINEER.
6. ALL DRUMS, VERTICAL PANELS AND BARRICADES ADJACENT TO THE EDGE OF TRAVELED WAY SHALL BE EQUIPPED WITH BI-DIRECTIONAL STEADY-BURNING LIGHTS.
7. ALL EXISTING SIGNS WITHIN MAINTENANCE OF TRAFFIC LIMITS WHICH ARE OBSCURED BY OR INTERFERE WITH CONSTRUCTION OPERATIONS AND MAINTENANCE OF TRAFFIC, SHALL BE COVERED OR REMOVED BY THE CONTRACTOR UNLESS SPECIFIED IN THE PLANS OR WHEN DIRECTED BY THE ENGINEER. THIS WORK SHALL BE IN ACCORDANCE WITH ARTICLE 107.25 OF THE IDOT STANDARD SPECIFICATIONS.
8. A FULL DEPTH SAWCUT WILL BE REQUIRED BETWEEN PAVEMENT, CURB AND/OR GUTTER TO REMAIN AND PAVEMENT,CURB AND/OR GUTTER TO BE REMOVED PRIOR TO BEGINNING OF REMOVAL WORK. COST TO BE INCLUDED WITH APPLICABLE REMOVAL ITEMS.
9. AS AN ADDITIONAL SOURCE OF INFORMATION IF NEEDED, ORIGINAL CONSTRUCTION SECTION NUMBER FOR STRUCTURE NUMBER 101-0046 IS 1-1HB.
10. STATIONING AND ALIGNMENT IS BASED ON ILLINOIS DEPARTMENT OF TRANSPORTATION SURVEY COMPLETED AFTER THE ORIGINAL CONSTRUCTION SECTIONS.
11. THE CONTRACTOR SHALL CONTACT THE IDOT DISTRICT 2 ENGINEER AT (815)284-2271 A MINIMUM OF 72 HOURS IN ADVANCE OF BEGINNING WORK.

GENERAL NOTES

THE STRUCTURE NUMBER SHALL REMAIN 101-0046.

DO NOT SCALE PLANS FOR CONSTRUCTION DIMENSIONS.

TRAFFIC WILL BE STAGED DURING CONSTRUCTION.

THE CONTRACTOR SHALL CONTACT THE IDOT DISTRICT 2 ENGINEER AT (815) 284-2271 A MINIMUM OF 72 HOURS IN ADVANCE OF BEGINNING WORK.

THE CONTRACTOR SHALL NOTIFY TRAFFIC OPERATIONS A MINIMUM OF 5 DAYS PRIOR TO PLACING PERMANENT PAVEMENT MARKING OR SIGNING.

IDOT IS NOT A MEMBER OF JULIE. IF YOU ARE NEAR ANY OVERHEAD LIGHTING, INTERSECTION LIGHTING, OR TRFFIC SIGNALS, CONTACT THE IDOT TRAFFIC CONTROL OFFICE AT 815/284-5469 AT LEAST 48 HOURS PRIOR TO WORK.

SUGGESTED MAINTENANCE OF TRAFFIC SEQUENCING

STAGE 1

INSTALL ALL STAGE 1 CONSTRUCTION TRAFFIC CONTROL SIGNS, DRUMS, BARRICADES,TEMPORARY CONCRETE BARRIER,TEMPORARY IMPACT ATTENUATORS, AND TEMPORARY PAVEMENT MARKINGS AS DETAILED IN STAGE 1 PLANS AND APPROPRIATE STANDARD DRAWINGS.

MERGE ALL WESTBOUND TRAFFIC TO THE EXISTING/TEMPORARY OUTSIDE LANE EAST OF SN 101-0046 CROSSING EASTBOUND BUS. US 20.

COORDINATE WORK TO BE COMPLETED IN THIS STAGE WITH DETAILS IN THE BRIDGE PLANS.

STAGE 2

CHANGE STAGE 1 CONSTRUCTION TRAFFIC CONTROL SIGNS, DRUMS, BARRICADES,TEMPORARY CONCRETE BARRIER,TEMPORARY IMPACT ATTENUATORS, AND TEMPORARY PAVEMENT MARKINGS AS NEEDED TO REFLECT STAGE 2 PLANS AND APPROPRIATE STANDARD DRAWINGS.

MERGE ALL WESTBOUND TRAFFIC TO THE EXISTING/TEMPORARY INSIDE LANE EAST OF SN 101-0046 CROSSING EASTBOUND BUS. US 20.

REMOVE ALL CONFLICTING TRAFFIC CONTROL ITEMS FROM STAGE 1 SETUP.

COORDINATE WORK TO BE COMPLETED IN THIS STAGE WITH DETAILS IN THE BRIDGE PLANS.

POST STAGE

REMOVE ALL CONSTRUCTION TRAFFIC CONTROL AND TEMPORARY CONSTRUCTION ITEMS.

REMOVE ANY REMAINING TEMPORARY PAVEMENT MARKINGS.

INSTALL PERMANENT PAVEMENT MARKINGS AS SHOWN IN THE PLANS.

MODEL: General notes (Sheet)
FILE NAME: L:\8008 KPFP-8008.001\PTB 206.023 Bridge Rehab (23903)\WO 11 -US20\WE over US20\BusEB\Civil\03 CAD\01 Model\0264U00-04-hg-gemnote.dgn

<div><div><div>EDI</div><div>Excellence. Dedication. Innovation</div></div><div>Environmental Design International inc. Civil, Survey, Environmental and Construction Inspection Services 33 W. MONROE STREET, SUITE 1025, CHICAGO, IL 60603 Ph: (312) 345-1400 Fax (312)345-6039 www.envdesign.com</div></div>	USER NAME = akobbah	DESIGNED - MGB	REVISED -	STATE OF ILLINOIS DEPARTMENT OF TRANSPORTATION	WESTBOUND US 20 CROSSING EASTBOUND BUS US 20 SHEET INDEX, GENERAL NOTES, CONSTRUCTION SEQUENCING					F.A.P RTE.	SECTION	COUNTY	TOTAL SHEETS	SHEET NO.
		DRAWN - MGB	REVISED -							301	(1-1HB)BDR	WINNEBAGO	25	2
		CHECKED - HJH	REVISED -							CONTRACT NO. 64U00				
	PLOT DATE = 3/7/2025	DATE -	REVISED -		SCALE:	SHEET 1	OF 1	SHEETS	STA.	TO STA.	ILLINOIS	FED. AID PROJECT		

MODEL: ###
FILE NAME: C:\Users\scottw\OneDrive - KPFF\OneDrive\WC 11 64U00 US 20 Bus\Submittals\25-25\DGN\264U00-sh-5001.dgn

SUMMARY OF QUANTITIES				CONSTR. CODE
CODE NO.	ITEM	UNIT	TOTAL QUANTITY	100% STATE 0047
				BRIDGE SN 101-0046
50102400	CONCRETE REMOVAL	CU YD	23	23
50300255	CONCRETE SUPERSTRUCTURE	CU YD	23	23
50300300	PROTECTIVE COAT	SQ YD	1237	1237
50800205	REINFORCEMENT BARS, EPOXY COATED	POUND	2671	2671
50800515	BAR SPLICERS	EACH	24	24
50157300	PROTECTIVE SHIELD	SQ YD	211	211
52000110	PREFORMED JOINT STRIP SEAL	FOOT	160	160
67100100	MOBILIZATION	L SUM	1	1
70100205	TRAFFIC CONTROL AND PROTECTION, STANDARD 701401	EACH	1	1
70100207	TRAFFIC CONTROL AND PROTECTION, STANDARD 701402	EACH	1	1
70107025	CHANGEABLE MESSAGE SIGN	CAL DA	28	28
70300150	SHORT TERM PAVEMENT MARKING REMOVAL	SQ FT	2072	2072
70307120	TEMPORARY PAVEMENT MARKING - LINE 4" - TYPE IV TAPE	FOOT	6220	6220
70400100	TEMPORARY CONCRETE BARRIER	FOOT	700	700

EDII

Excellence. Dedication. Innovation

Environmental Design International inc.

Civil, Survey, Environmental and Construction Inspection Services

33 W. MONROIE STREET, SUITE 1825, CHICAGO, IL 60603

PH: (312) 345-1400 FAX (312) 345-0529 www.edi-design.com

USER NAME = akobbah

DESIGNED - MGB

DRAWN - MGB

CHECKED - HJH

PLOT DATE = 2/25/2025

DATE -

REVISED -

REVISED -

REVISED -

REVISED -

STATE OF ILLINOIS
DEPARTMENT OF TRANSPORTATION

WESTBOUND US 20 CROSSING EASTBOUND BUS US 20
SUMMARY OF QUANTITIES

F.A.P. RTE.	SECTION	COUNTY	TOTAL SHEETS	SHEET NO.
301	(1-1HB)BDR	WINNEBAGO	25	3
CONTRACT NO. 64U00				
ILLINOIS FED. AID PROJECT				

MODEL: ###
FILE NAME: C:\Users\scottw\OneDrive - KPFF - Inc\Desktop\VO 11 64U00 US 20 Bus\Submit\3-15-25\BND264U00-sht-SQ02.dgn

Environmental
Civil, Survey, Environ
33 W. MONROE ST
P.O. BOX 345-1400

sign International inc.
al and Construction Inspection Services
SUITE 1025, CHICAGO, IL 60603
708-345-2502 www.scotssign.com

* = SPECIALTY ITEM

				CONSTR. CODE
				100% STATE 0047
CODE NO.	ITEM	UNIT	TOTAL QUANTITY	BRIDGE SN 101-0046
70400200	RELOCATE TEMPORARY CONCRETE BARRIER	FOOT	700	700
70600251	IMPACT ATTENUATORS, TEMPORARY (NON- REDIRECTIVE, NARROW), TEST LEVEL 3	EACH	1	1
70600352	IMPACT ATTENUATORS, RELOCATE (NON- REDIRECTIVE, NARROW), TEST LEVEL 3	EACH	1	1
* 78004635	PREFORMED PLASTIC PAVEMENT MARKING, TYPE D - STANDARD LINE 7"	FOOT	101	101
* 78009004	MODIFIED URETHANE PAVEMENT MARKING, TYPE D - LINE 4"	FOOT	1711	1711
* 78011030	GROOVING FOR RECESSED PAVEMENT MARKING 6"	FOOT	1711	1711
* 78011045	GROOVING FOR RECESSED PAVEMENT MARKING 9"	FOOT	101	101
* 78100100	RAISED REFLECTIVE PAVEMENT MARKER	EACH	10	10
78300202	PAVEMENT MARKING REMOVAL-WATER BLASTING	SQ FT	422	422
X5030250	BRIDGE DECK GROOVING (LONGITUDINAL)	SQ YD	865	865
* X7820007	GUARDRAIL REFLECTORS, TYPE C (SPECIAL)	EACH	54	54
Z0012140	BRIDGE DECK SCARIFICATION 2"	SQ YD	1194	1194
Z0012162	BRIDGE DECK MICROSILICA CONCRETE OVERLAY 2 1/4"	SQ YD	1194	1194
Z0029090	DIAMOND GRINDING (BRIDGE SECTION)	SQ YD	1040	1040

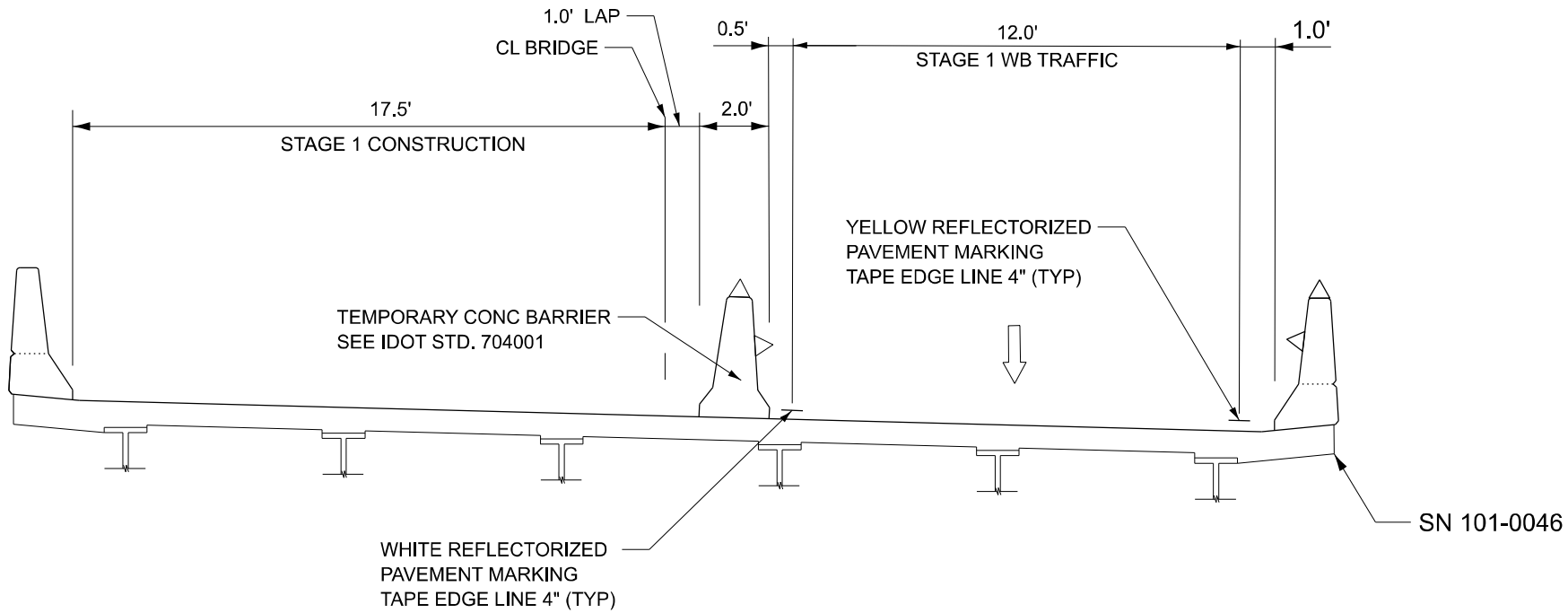
STATE OF ILLINOIS
DEPARTMENT OF TRANSPORTATION

WESTBOUND US 20 CROSSING EASTBOUND BUS US 20
SUMMARY OF QUANTITIES

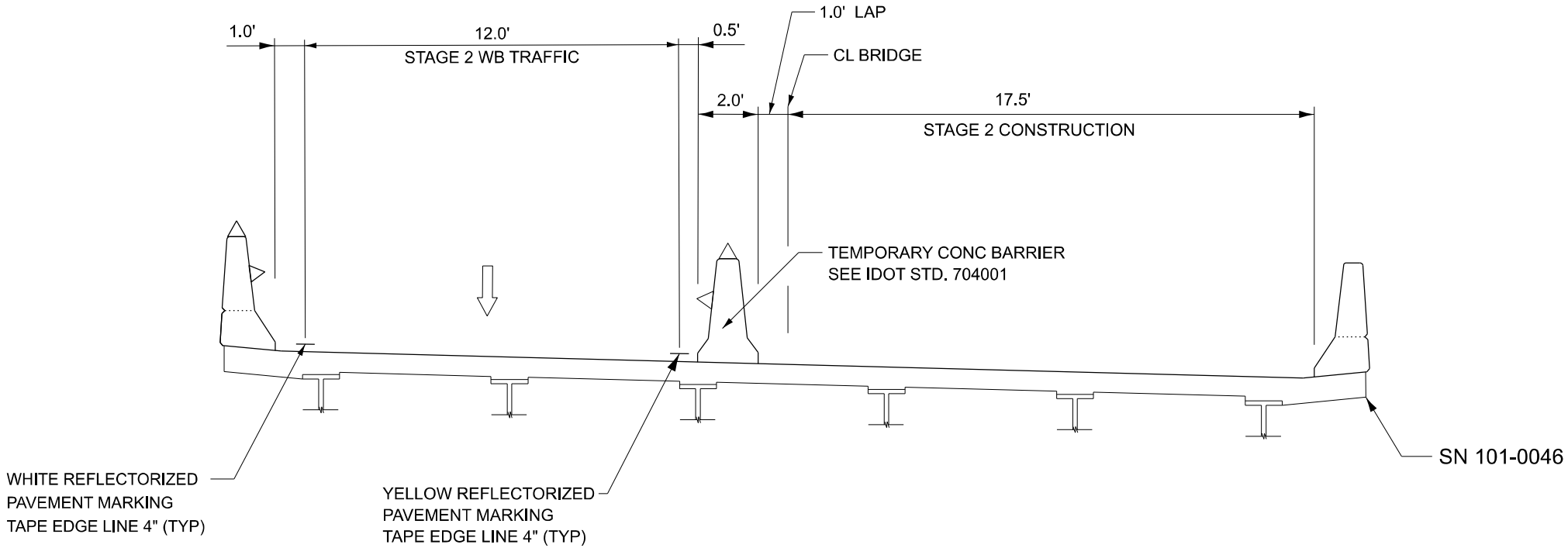
SCALE: N.A. SHEET 2 OF 2 SHEETS STA. TO STA.

F.A.P. RTE.	SECTION	COUNTY	TOTAL SHEETS	SHEET NO.
301	(1-1HB)BDR	WINNEBAGO	25	4
CONTRACT NO. 64U00				
ILLINOIS FED. AID PROJECT				

STAGE 1
(LOOKING EAST)



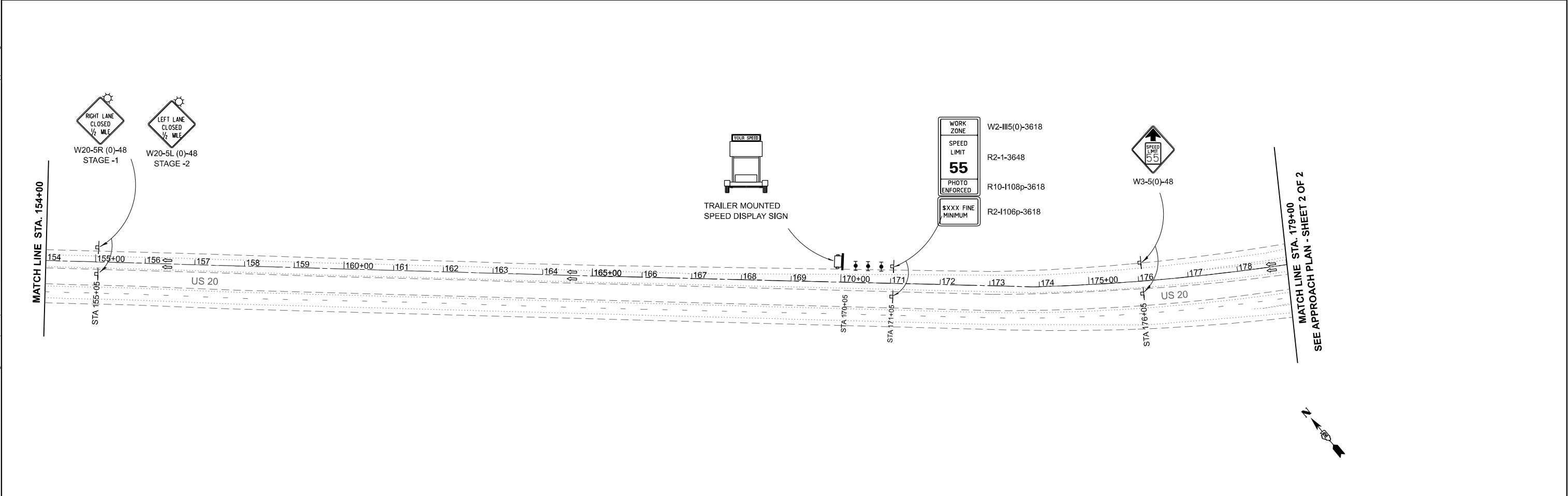
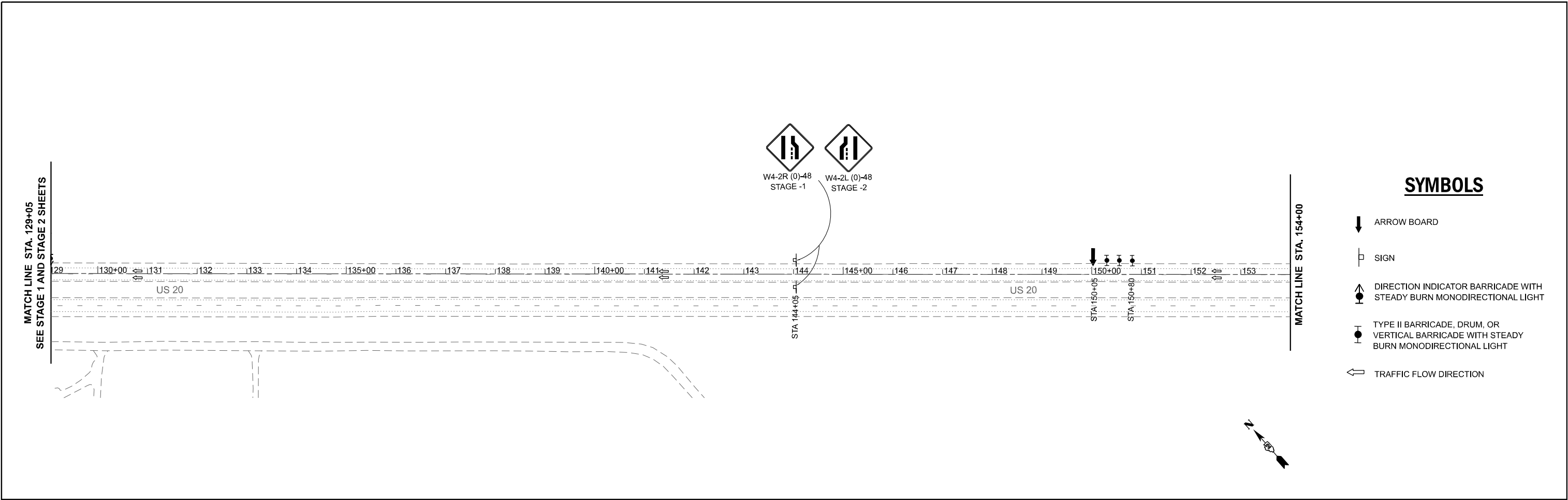
STAGE 2
(LOOKING EAST)



MODEL: D264R26-TYPESEC-MOT (Sheet)
FILE NAME: L:\8008 KPFP\8008.001\PTB 206.023 Bridge Rehab (23903)\WO 11 -US20WB over US20BusEB\CH0103 CAD\01 Model\D264U00-sh-typical-mot.dgn

<div><div>EDI</div><div>Excellence. Dedication. Innovation.</div><div>Environmental Design International Inc.</div><div>Civil, Survey, Environmental and Construction Inspection Services</div><div>33 W. MONROE STREET, SUITE 1025, CHICAGO, IL 60603</div><div>Ph: (312) 345-1400 Fax: (312) 345-0529 www.environmental-design.com</div></div>	USER NAME = akobbah		DESIGNED - MGB	REVISED -	<div><div>STATE OF ILLINOIS</div><div>DEPARTMENT OF TRANSPORTATION</div></div>	<div><div>WESTBOUND US 20 CROSSING EASTBOUND BUS US 20</div><div>MAINTENANCE OF TRAFFIC TYPICAL SECTION</div></div>						F.A.P RTE.	SECTION	COUNTY	TOTAL SHEETS	SHEET NO.
	DRAWN - MGB		CHECKED - HJH	REVISED -		301	(1-1HB)BDR	WINNEBAGO	25	5						
	PLOT DATE = 2/3/2025		DATE -	REVISED -		CONTRACT NO. 64U00										
						SCALE: NTS				SHEET 1 OF 1 SHEETS	STA.	TO STA.				
										ILLINOIS FED. AID PROJECT						

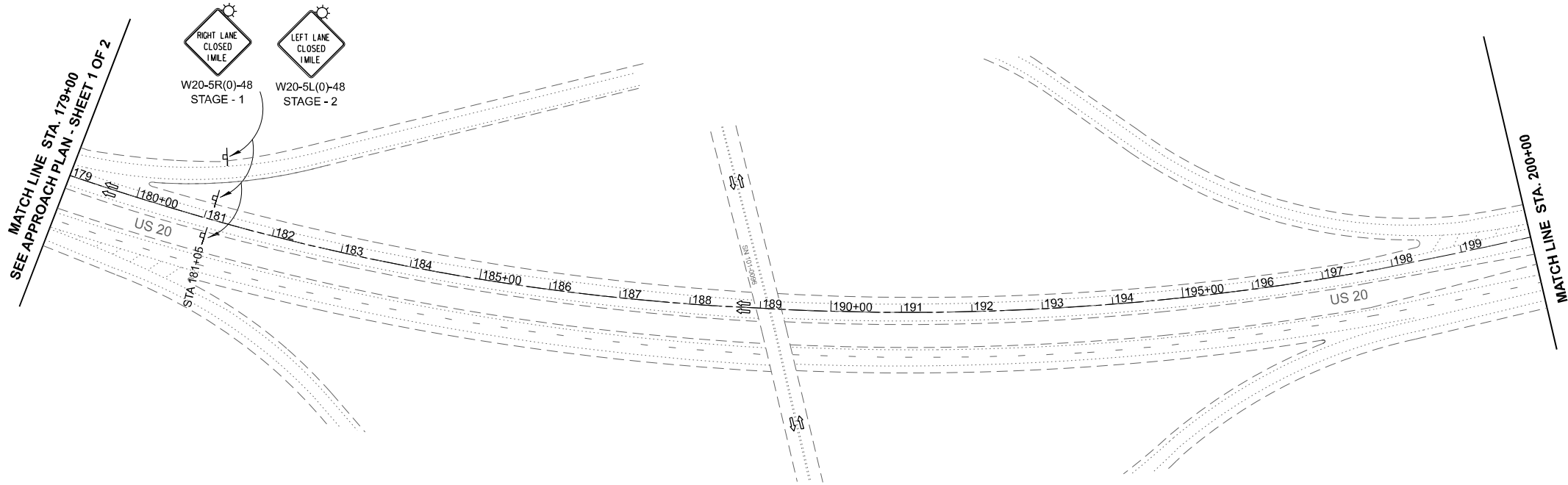
MODEL: STAGE 1 - Sheet 2
FILE NAME: L:\8008 KPFF\8008.001\PTB 206.023 Bridge Rehab (23903)\WO 11 -US20WBE over US20BusEB\Civil\03 CAD\01 Model\D264U00-4ht-Approach.dgn



	USER NAME = akobbah	DESIGNED - MGB	REVISED -	STATE OF ILLINOIS DEPARTMENT OF TRANSPORTATION	US 20 AT BUS US 20 MAINTENANCE OF TRAFFIC APPROACH PLAN - SHEET 1 OF 2			F.A.P. RTE.	SECTION	COUNTY	TOTAL SHEETS	SHEET NO.
		DRAWN - AFK	REVISED -					301	(1-1HB)BDR	WINNEBAGO	25	6
		CHECKED - HJH	REVISED -					CONTRACT NO. 64U00				
	PLOT DATE = 2/25/2025	DATE -	REVISED -		SCALE: 1"=100'	SHEET 1 OF 4 SHEETS	STA. 129+00	TO STA. 179+00				

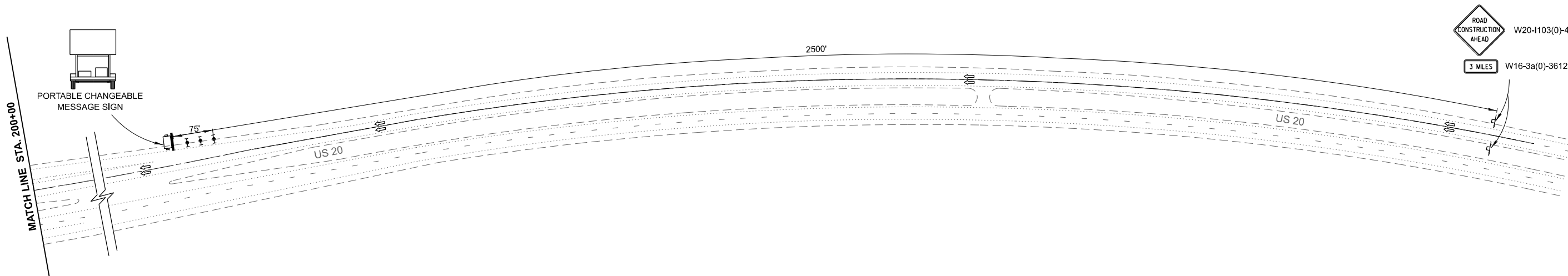
ILLINOIS	FED. AID PROJECT
----------	------------------

MODEL: STAGE 1 - Sheet 3
FILE NAME: L:\8008 KPFF\8008.001\PTB 206.023 Bridge Rehab (23903)\WO 11 -US20WBE over US20BusEB\Civil\03 CAD\01 Model\264U00-ah-Approach.dgn



SYMBOLS

- ARROW BOARD
- SIGN
- DIRECTION INDICATOR BARRICADE WITH STEADY BURN MONODIRECTIONAL LIGHT
- TYPE II BARRICADE, DRUM, OR VERTICAL BARRICADE WITH STEADY BURN MONODIRECTIONAL LIGHT
- TRAFFIC FLOW DIRECTION



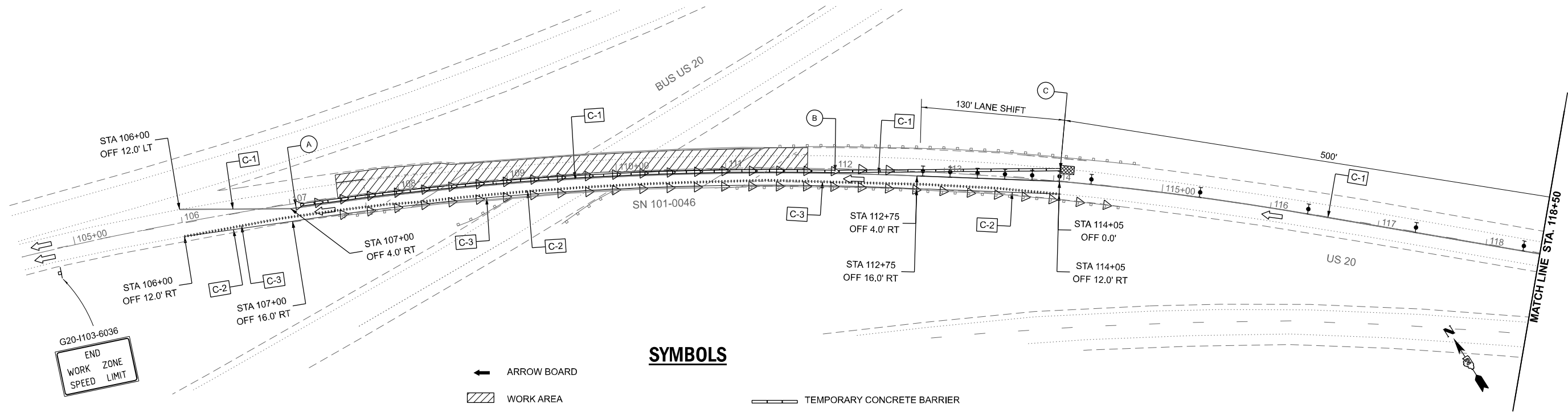
PLOT DATE = 2/25/2025	USER NAME = akobbah	DESIGNED - MGB	REVISED -
		DRAWN - AFK	REVISED -
		CHECKED - HJH	REVISED -
	DATE -		REVISED -

STATE OF ILLINOIS
DEPARTMENT OF TRANSPORTATION

US 20 AT BUS US 20 MAINTENANCE OF TRAFFIC APPROACH PLAN - SHEET 2 OF 2

SCALE: 1"=100' SHEET 2 OF 4 SHEETS STA. 179+00 TO STA. 228+00

F.A.P RTE.	SECTION	COUNTY	TOTAL SHEETS	SHEET NO.
301	(1-1HB)BDR	WINNEBAGO	25	7
CONTRACT NO. 64U00				
ILLINOIS FED. AID PROJECT				



TEMP. BARRIER WALL OFFSETS

- (A) STA 107+05 1.0' RIGHT
(B) STA 112+00 1.0' RIGHT
(C) STA 114+05 12.0' LEFT

← ARROW BOARD

WORK AREA

SIGN

DIRECTION INDICATOR BARRICADE WITH STEADY BURN MONODIRECTIONAL LIGHT

TYPE II BARRICADE, DRUM, OR VERTICAL BARRICADE WITH STEADY BURN MONODIRECTIONAL LIGHT

SYMBOLS

TEMPORARY CONCRETE BARRIER

MONODIRECTIONAL GUARDRAIL/BARRIER WALL REFLECTOR

IMPACT ATTENUATOR

TRAFFIC FLOW DIRECTION

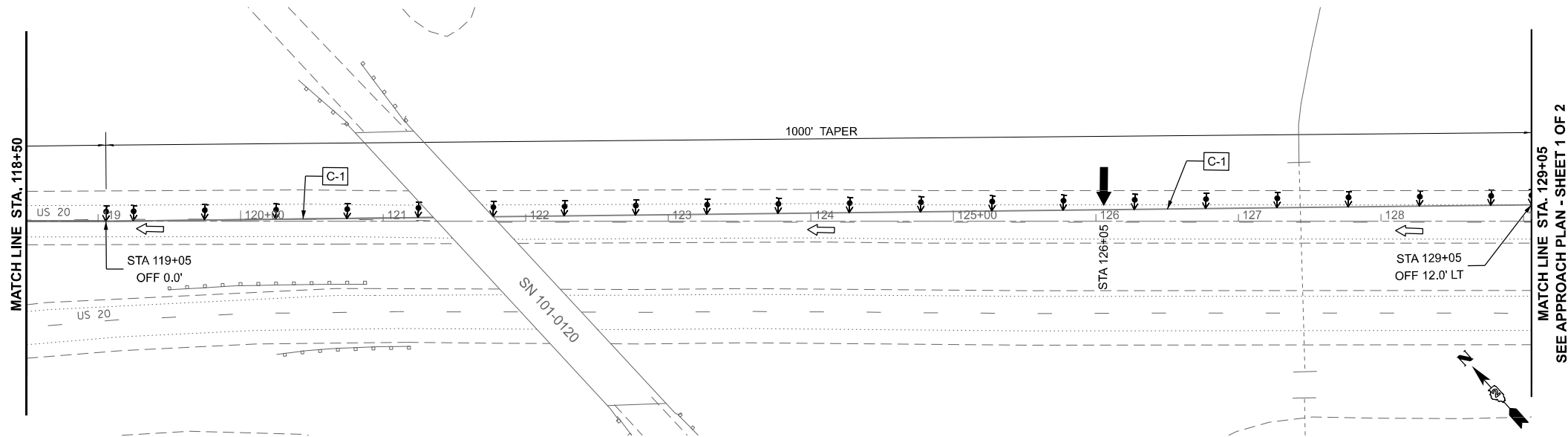
C-1 PAVEMENT MARKING TAPE, TYPE IV, 4" WHITE

C-2 PAVEMENT MARKING TAPE, TYPE IV, 4" YELLOW.

C-3 PAVEMENT MARKING REMOVAL-WATER BLASTING

SCHEDULE OF TEMPORARY CONCRETE BARRIER AND REFLECTORS - STAGE 1				
LOCATION	STATION		TEMPORARY CONC BARRIER FOOT	REFL, TY C (SPEC) EACH
	BEGIN	END		
SN 101-0046	107+05	114+05	700	
SW GUARDRAIL	107+40	108+10		3
S BRIDGE PARAPET	108+10	110+85		11
SE GUARDRAIL	110+85	114+60		15
TOTAL			700	29

SCHEDULE OF PAVEMENT MARKING AND REMOVAL - STAGE 1									
SYMBOL	ITEM	LOCATION	STATION		OFFSET		TEMPORARY PMK FOOT (4")	PMK REMOVAL	
			BEGIN	END	MIN	MAX		PERMANENT SQ FT	TEMPORARY SQ FT
C-3	REMOVE MARK-WATER BLAST	4" YELLOW EDGE LINE	106+00	114+05	12' RT	12' RT		268	
C-1	4" WHITE TEMP - SOLID	NORTH EDGE LINE	106+00	129+05	4' RT	12' LT	2305		
C-2	4" YELLOW TEMP - SINGLE	SOUTH EDGE LINE	106+00	114+05	12' RT	16' RT	805		



SEE APPROACH PLAN - SHEET 1 OF 2

MODEL: STAGE 1 - Sheet 1
FILE NAME: L:\8008 KPFF\8008.001\PTB 206.023 Bridge Rehab (23903)\WO 11 -US20\WB over US20\BusEB\CH0103 CAD\01 Model\264U00-ah-Staging.dgn

USER NAME = akobbah	DESIGNED - MGB	REVISED -
	DRAWN - AFK	REVISED -
	CHECKED - HJH	REVISED -
PLOT DATE = 3/7/2025	DATE -	REVISED -

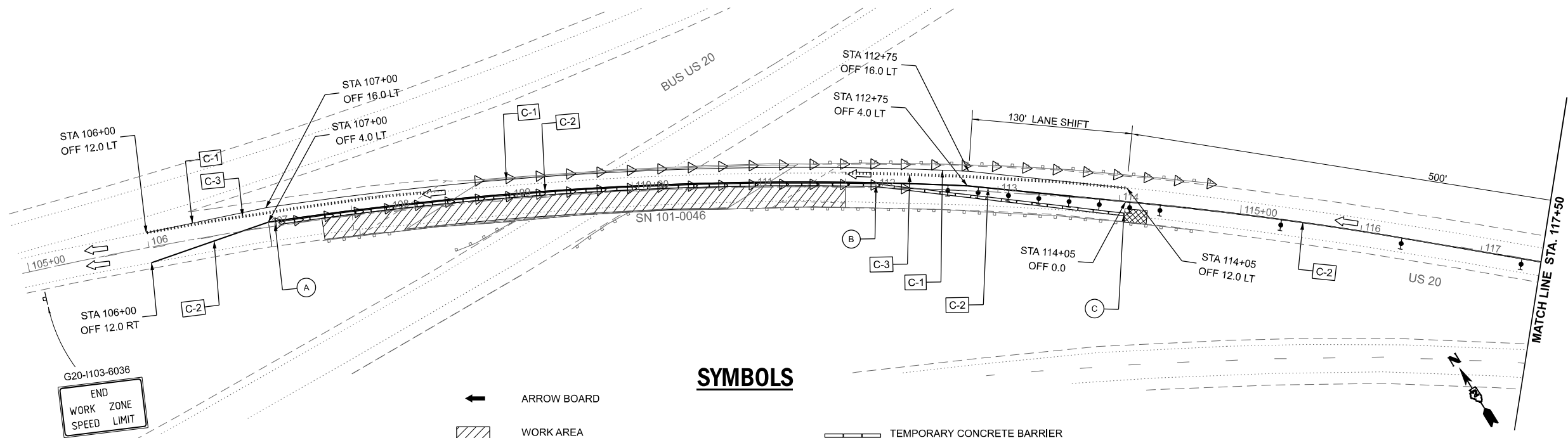
STATE OF ILLINOIS
DEPARTMENT OF TRANSPORTATION

US 20 AT BUS US 20
MAINTENANCE OF TRAFFIC PLAN STAGE 1

SCALE: 1"=50' SHEET 3 OF 4 SHEETS STA. 105+00.00 TO STA. 129+05.00

F.A.P RTE.	SECTION	COUNTY	TOTAL SHEETS	SHEET NO.
301	(1-1HB) BDR	WINNEBAGO	25	8
CONTRACT NO. 64U00				
ILLINOIS FED. AID PROJECT				

MODEL: STAGE 2 - Sheet 1
FILE NAME: L:\8008 KPFF\8008.001\PTB 206.023 Bridge Rehab (23903)\WO 11 -US20\WB over US20\BusEB\Civil\03 CAD\01 Model\264U00-ah-Staging.dgn



G20-1103-6036
END
WORK ZONE
SPEED LIMIT

TEMP. BARRIER WALL OFFSETS

(A)	STA 107+05	1.0' LEFT
(B)	STA 112+00	1.0' LEFT
(C)	STA 114+05	12.0' RIGHT

← ARROW BOARD

▨ WORK AREA

⚑ SIGN

↑ DIRECTION INDICATOR BARRICADE WITH STEADY BURN MONODIRECTIONAL LIGHT

● TYPE II BARRICADE, DRUM, OR VERTICAL BARRICADE WITH STEADY BURN MONODIRECTIONAL LIGHT

SYMBOLS

▬ TEMPORARY CONCRETE BARRIER

◁ MONODIRECTIONAL GUARDRAIL/BARRIER WALL REFLECTOR

▩ IMPACT ATTENUATOR

→ TRAFFIC FLOW DIRECTION

[C-1] PAVEMENT MARKING TAPE, TYPE IV, 4" WHITE

[C-2] PAVEMENT MARKING TAPE, TYPE IV, 4" YELLOW.

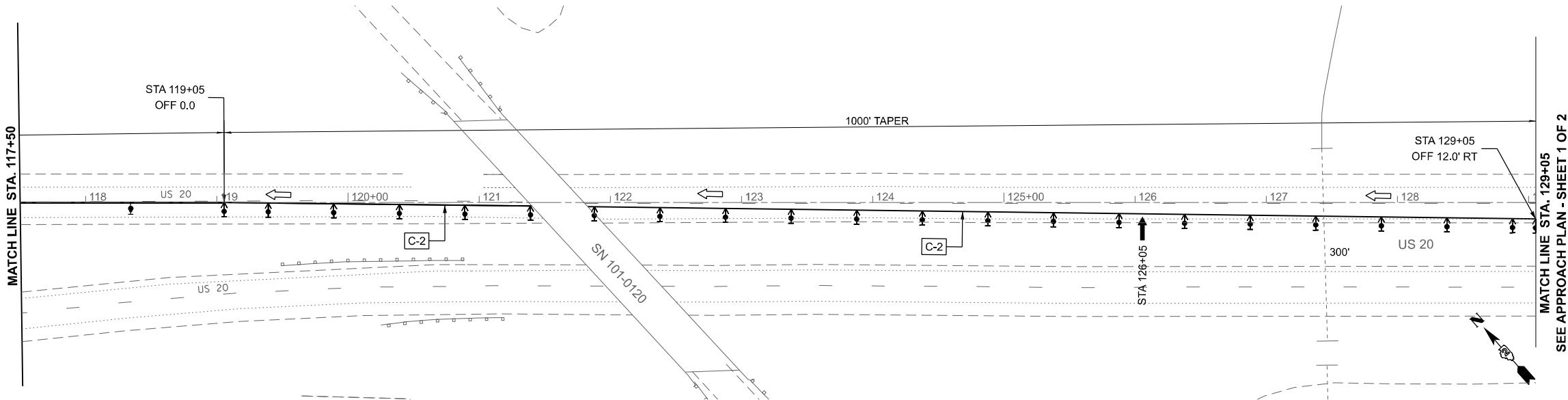
[C-3] PAVEMENT MARKING REMOVAL-WATER BLASTING

SCHEDULE OF TEMPORARY CONCRETE BARRIER AND REFLECTORS - STAGE 2

LOCATION	STATION		RELOCATE TEMPORARY CONCRETE BARRIER FOOT	REFL, TY C (SPEC) EACH
	BEGIN	END		
SN 101 0046	107+05	114+05	700	
N BRIDGE PARAPET	108+60	111+20		11
NE GUARDRAIL	111+20	114+70		14
TOTAL			700	25

SCHEDULE OF PAVEMENT MARKING AND REMOVAL - STAGE 2

SYMBOL	ITEM	LOCATION	STATION		OFFSET		PMK REMOVAL		
			BEGIN	END	MIN	MAX	TEMPORARY PMK FOOT (4")	PERMANENT SQ FT	TEMPORARY SQ FT
	REMOVE TEMP PMK	4" YELLOW S EDGE LINE - STAGE 1	106+00	114+05	12' RT	16' RT			268
	REMOVE TEMP PMK	4" WHITE N EDGE LINE - STAGE 1	106+00	129+05	4' RT	12' RT			768
[C-3]	REMOVE MARK-WATER BLAST	4" WHITE NW EDGE LINE	106+00	108+30	12' LT	12' LT		77	
[C-3]	REMOVE MARK-WATER BLAST	4" WHITE NE EDGE LINE	111+75	114+05	12' LT	12' LT		77	
[C-1]	4" WHITE TEMP - SOLID	NORTH EDGE LINE	106+00	114+05	12' LT	16' LT	805		
[C-2]	4" YELLOW TEMP - SINGLE	SOUTH EDGE LINE	106+00	129+05	4' LT	12' RT	2305		



PLOT DATE = 3/7/2025	USER NAME = akobbah	DESIGNED - MGB	REVISED -
		DRAWN - AFK	REVISED -
		CHECKED - HJH	REVISED -
		DATE -	REVISED -

STATE OF ILLINOIS
DEPARTMENT OF TRANSPORTATION

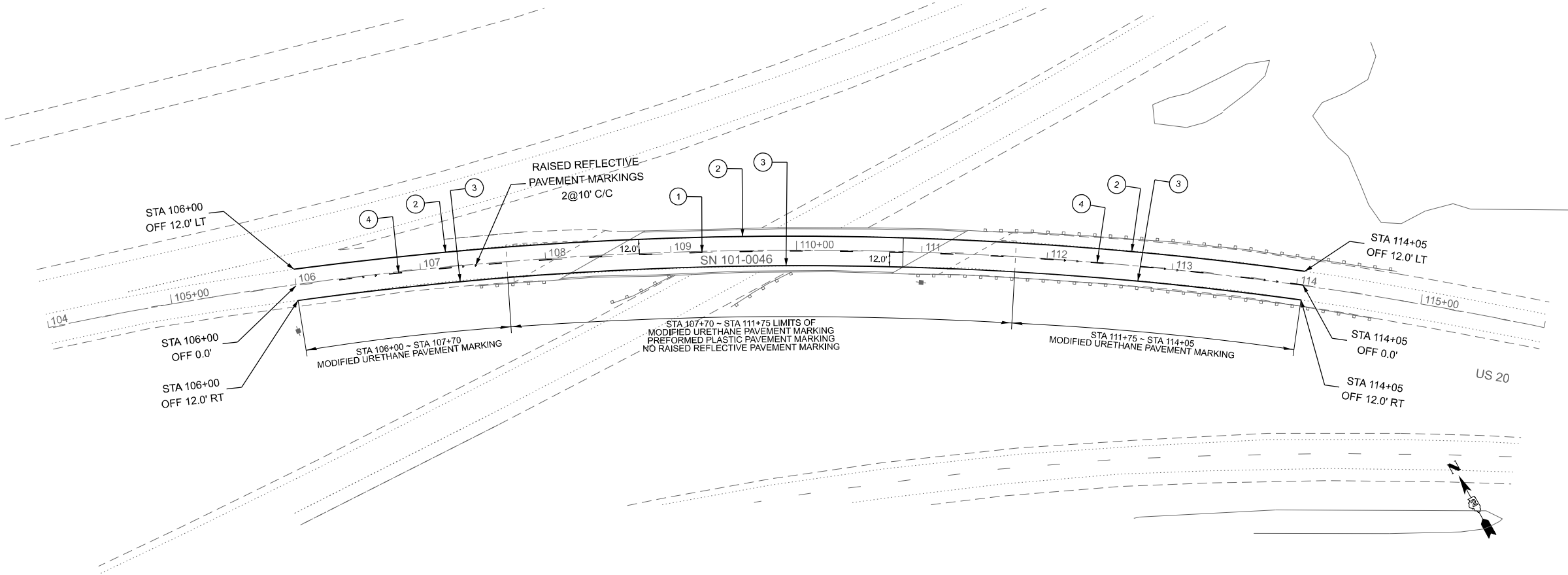
US 20 AT BUS US 20
MAINTENANCE OF TRAFFIC PLAN STAGE 2

SCALE: 1"=50' SHEET 4 OF 4 SHEETS STA. 105+00 TO STA. 129+05

F.A. RTE.	SECTION	COUNTY	TOTAL SHEETS	SHEET NO.
301	(1-1HB) BDR	WINNEBAGO	25	9
CONTRACT NO. 64U00				
ILLINOIS FED. AID PROJECT				

MODEL: EXCL5 - PMK (Sheet)
FILE NAME: L:\8008 KPFP\8008.001\PTB 206.023 Bridge Rehab (23903)\WO 11 -US20\WB over US20\BusEB\Civil\03 CAD\01 Model\D264U00-shr-PermanentPMK.dgn

SN 101-0046 POST STAGE								
SYMBOL	ITEM	LOCATION	STATION		OFFSET		PAVEMENT MARKING	REMOVAL TEMPORARY
			BEGIN	END	MIN	MAX	FOOT (4")	SQ FT
	PAVEMENT MARKING REMOVAL							
	TEMP MARKING REMOVAL-4" WHITE	N EDGE LINE STAGE 2	106+00	114+05	12' LT	16' LT		268
	TEMP MARKING REMOVAL-4" YELLOW	S EDGE LINE STAGE 2	106+00	129+05	4' LT	12' RT		768
	PERMANENT PAVEMENT MARKING - MODIFIED URETHANE							
④	PMK 4" - WHITE	LANE LINE - 10' DASHED 30' SKIP	106+00	107+70	0'	0'	43	
④	PMK 4" - WHITE	LANE LINE - 10' DASHED 30' SKIP	111+75	114+05	0'	0'	58	
②	PMK 4" - WHITE	N EDGE LINE - SOLID	106+00	114+05	12' LT	12' LT	805	
③	PMK 4" - YELLOW	S EDGE LINE - SINGLE	106+00	114+05	12' RT	12' RT	805	
	PERMANENT PAVEMENT MARKING - PREFORMED PLASTIC							
①	PMK 7" - 1.5" BLACK, 4" WHITE, 1.5"BLACK	LANE LINE - 10' DASHED 30' SKIP	107+70	111+75	0'	0'	101	



- ① PREFORMED PLASTIC PAVEMENT MARKING, TYPE D - STANDARD - LINE 9" GROOVING, LANE LINE 7" (5" BLACK, 4" WHITE, 1.5" BLACK), 10' DASH - 30' SKIP WHITE LANE LINE
- ② MODIFIED URETHANE PAVEMENT MARKING, TYPE D - STANDARD - LINE 4", SOLID WHITE EDGE LINE
- ③ MODIFIED URETHANE PAVEMENT MARKING, TYPE D - STANDARD - LINE 4", SINGLE YELLOW EDGE LINE
- ④ MODIFIED URETHANE PAVEMENT MARKING, TYPE D - STANDARD - 6" GROOVING, LANE LINE 4" 10' DASH - 30' SKIP WHITE LANE LINE

PREFORMED PLASTIC PAVEMENT MARKINGS, TYPE D AND GROOVING FOR RECESSED PAVEMENT MARKINGS SHALL BE USED FOR ALL LANE LINE PAVEMENT MARKINGS WITHIN BRIDGE LIMITS.

ALL PAVEMENT MARKINGS SHALL BE INSTALLED ACCORDING TO D2 STANDARD 41.1.

ALL RAISED REFLECTIVE PAVEMENT MARKINGS SHALL BE INSTALLED ACCORDING TO D2 STANDARD 41.1.

PLOT DATE = 3/7/2025	USER NAME = akobbah	DESIGNED - MGB	REVISED -
		DRAWN - AFK	REVISED -
		CHECKED - HJH	REVISED -
	DATE -		REVISED -

STATE OF ILLINOIS
DEPARTMENT OF TRANSPORTATION

US 20 AT BUS US 20
PERMANENT PAVEMENT MARKING PLAN

SCALE: 1"=50' SHEET OF SHEETS STA. 104+00.00 TO STA. 116+00.00

F.A.P RTE.	SECTION	COUNTY	TOTAL SHEETS	SHEET NO.
301	(1-1HB) BDR	WINNEBAGO	25	10
CONTRACT NO. 64U00				
ILLINOIS FED. AID PROJECT				

SCOPE OF WORK

- A Scarify Bridge Deck And Appr. 2". Install 2 1/2 " Microsilica Overlay, Diamond Grind 1/4 "
- B Remove and Replace Expansion Joints
- C Remove and Reset Bridge Name Plates as Needed, Cost Included in Concrete Removal

GENERAL NOTES

Plan dimensions and details relative to the existing strucutre have been taken from existing plans are subject to nominal construction variations. The Contractor shall field verify existing dimensions and details affecting new construction and make necessary approved adjustments prior to construction or ordering materials. Such variations shall not be cause for additional compensation for a change in scope of the work, however, the Contractor will be paid for the quantity actually furnished at the unit price bid for the work.

Reinforcement bars designated (E) shall be epoxy coated.

Existing reinforcement bars extending into the removal area shall be cleaned, straightened and incorporated into the new construction. Any reinforcement bars that are damaged during concrete removal shall be replaced with an approved bar splicer or anchorage system at the Contractor's expense.

Joint openings shall be adjusted according to Article 520.04 of the Standard Specifications when the deck is poured at an ambient temperature other than 50° F.

Protective coat to be applied to all new concrete surfaces, new overlay and front face and top of concrete parapets.

Traffic will be staged during construction.

TOTAL BILL OF MATERIAL

ITEM	UNIT	TOTAL
Bar Splicers	Each	24
Concrete Removal	Cu. Yd.	23
Concrete Superstructure	Cu. Yd.	23
Bridge Deck Grooving (Longitudinal)	Sq. Yd.	865
Diamond Grinding	Sq. Yd.	1040
Protective Coat	Sq. Yd.	1237
Reinforcement Bars Epoxy Coated	Pound	2671
Preformed Joint Strip Seal	Foot	160
Bridge Deck Scarification, 2"	Sq. Yd.	1194
Bridge Deck Microsilica Concrete Overlay, 2 1/2 "	Sq. Yd.	1194
Protective Shield	Sq. Yd.	211

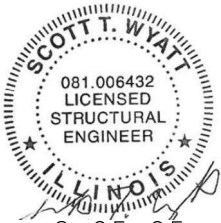
DESIGN STRESSES

New Construction

f'c = 4,000 psi (Superstructure)
fy = 60,000psi (Reinforcement)

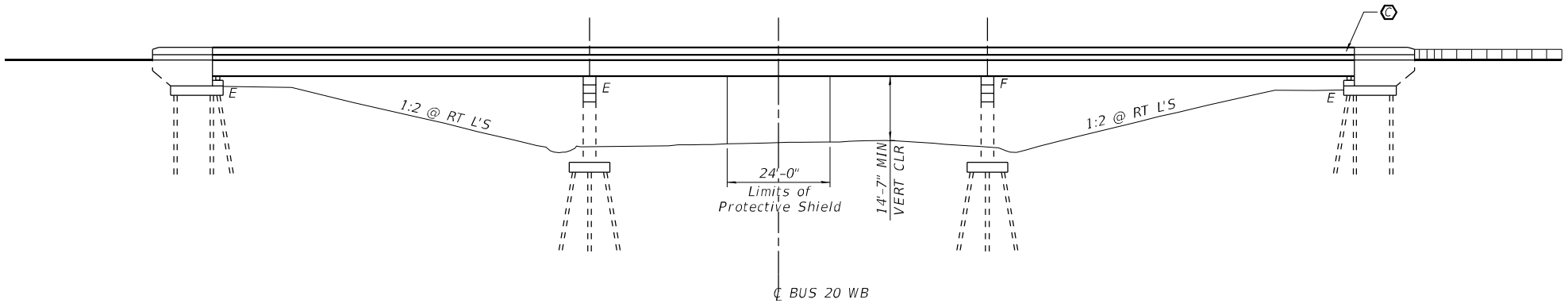
Existing Construction

f'c = 3,500 psi
fy = 60,000psi (Reinforcement)

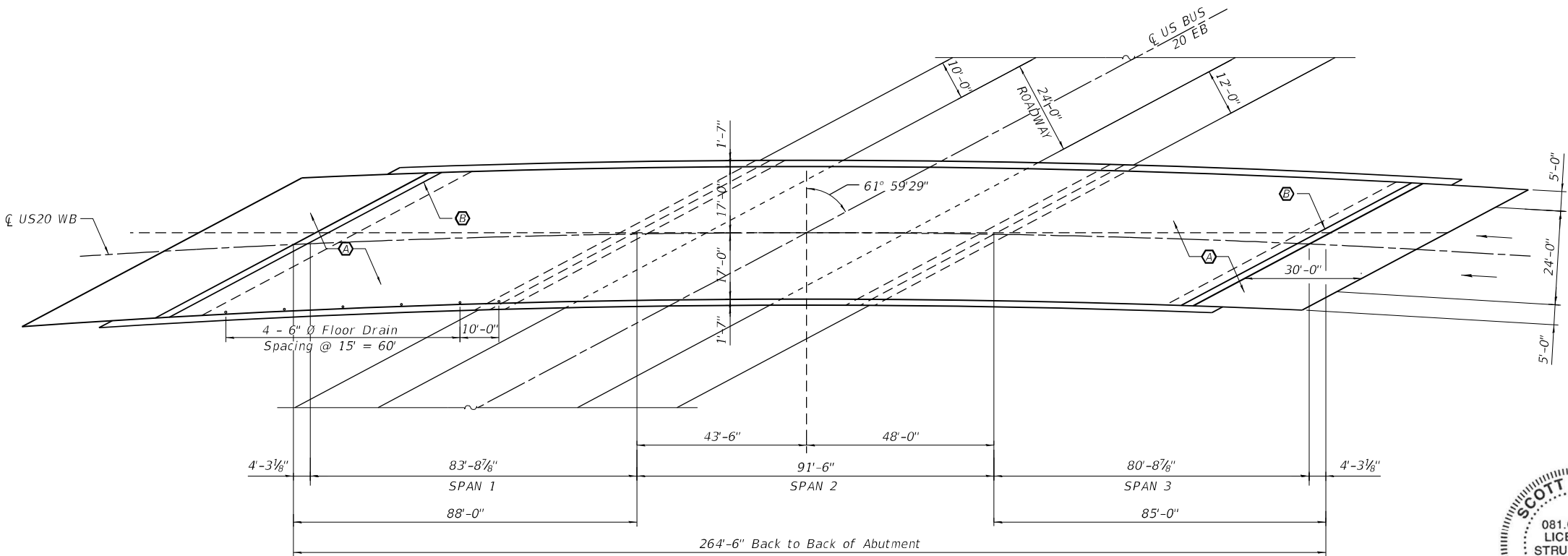


3-25-25

EXP. 11-30-26



ELEVATION



PLAN

MODEL: Default
FILE NAME: \\kpff.com\dfs\Bridges\2400738 (WO #11-SN 101-0046)\02_Design (MS)\64U00+11 Plan & Elev.dgn

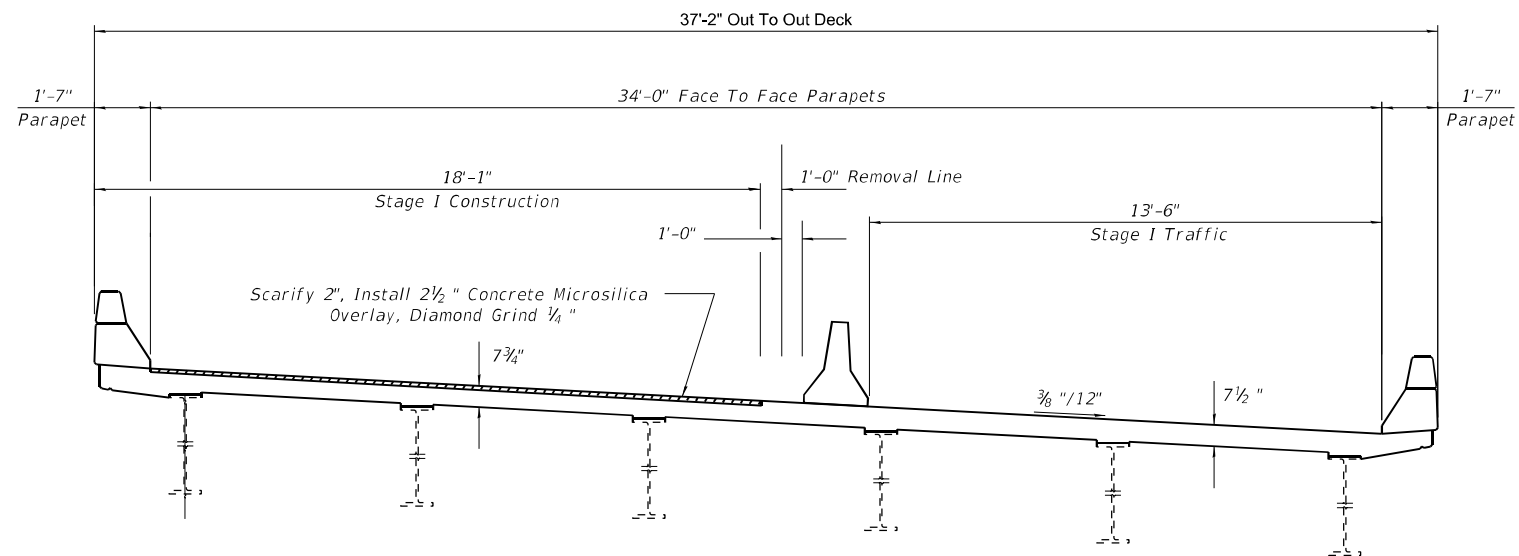


USER NAME =	DESIGNED -	REVISED -
PLOT SCALE =	CHECKED -	REVISED -
PLOT DATE =	DRAWN -	REVISED -
	CHECKED -	REVISED -

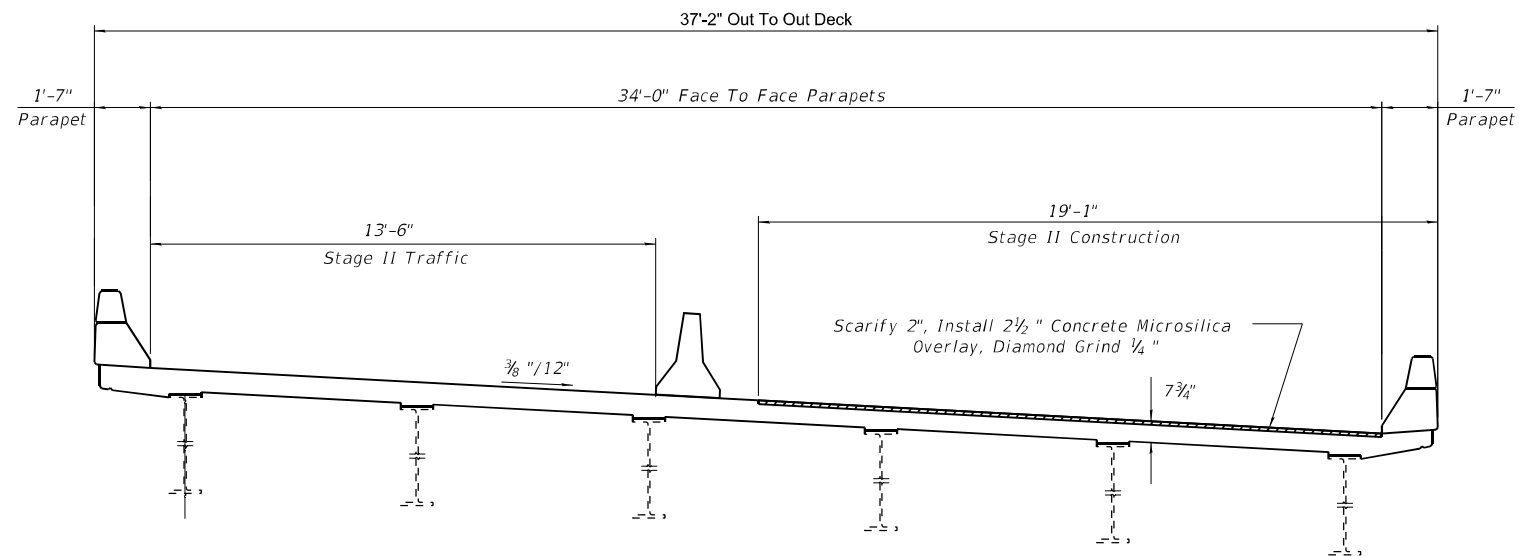
STATE OF ILLINOIS
DEPARTMENT OF TRANSPORTATION

PLAN AND ELEVATION
SN 101-0046

F.A.I RTE.	SECTION	COUNTY	TOTAL SHEETS	SHEET NO.
301	(1-1HB)BDR	WINNEBAGO	25	11
CONTRACT NO. 64U00				
ILLINOIS FED. AID PROJECT				



TYPICAL SECTION STAGE I
(Looking East)



MODEL: Default
FILE NAME: \\kpff.com\dfs\Bridges\2400738 (WO #11-SN 101-0046)\02_Design (MS)\64U00-12 Typical Section.dgn

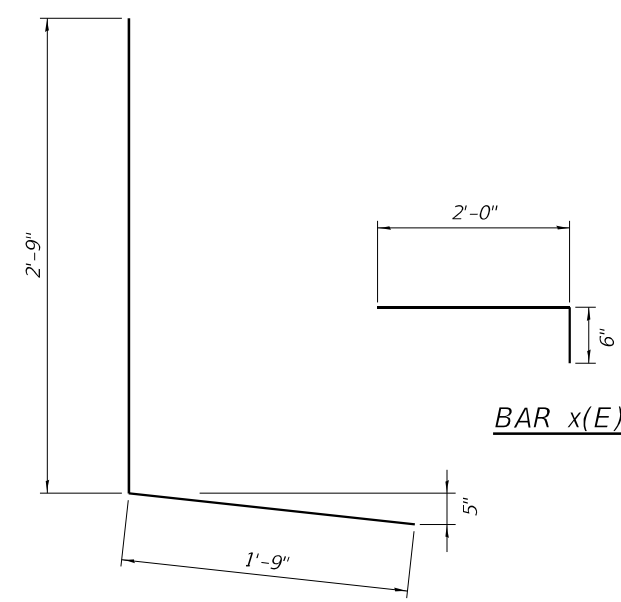
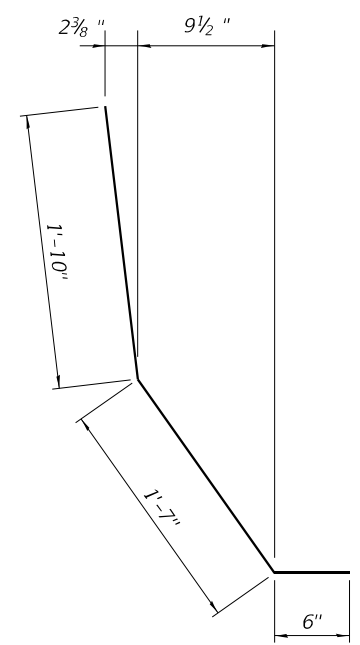
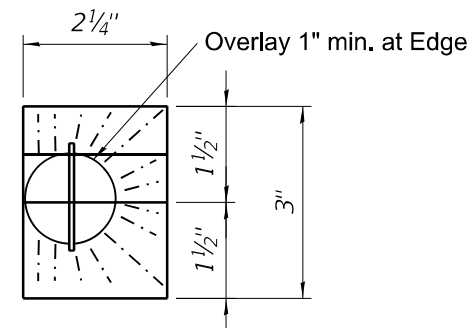
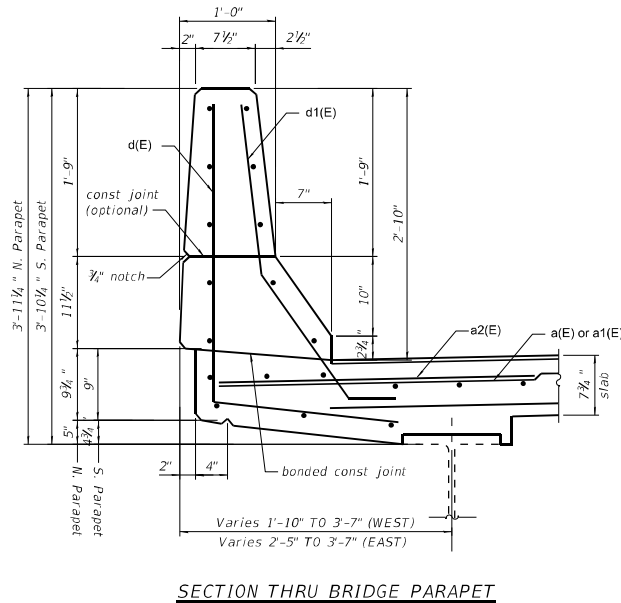
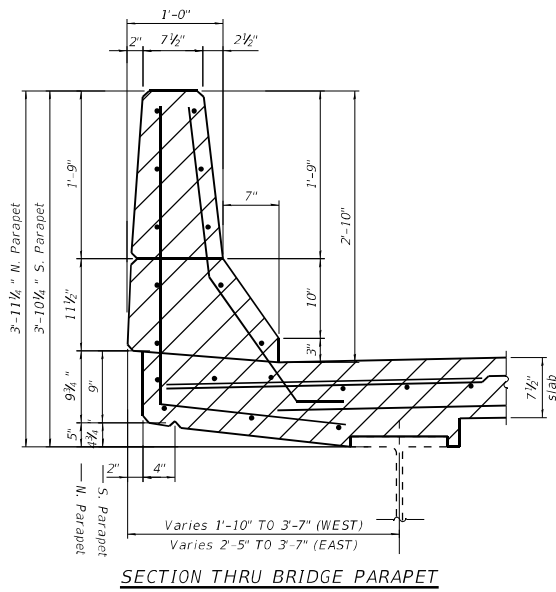


USER NAME =	DESIGNED -	REVISED -
	CHECKED -	REVISED -
PLOT SCALE =	DRAWN -	REVISED -
PLOT DATE =	CHECKED -	REVISED -

STATE OF ILLINOIS
DEPARTMENT OF TRANSPORTATION

TYPICAL SECTION
SN 101-0046

F.A.I RTE.	SECTION	COUNTY	TOTAL SHEETS	SHEET NO.
301	(1-1HB)BDR	WINNEBAGO	25	12
CONTRACT NO. 64U00				
ILLINOIS FED. AID PROJECT				



BILL OF MATERIAL				
Bar	No.	Size	Length	Shape
a(E)	16	5	38'-2"	—
a1(E)	16	5	40'-4"	—
a2(E)	8	6	6'-0"	—
d(E)	26	4	4'-6"	L
d1(E)	26	5	3'-11"	└
b(E)	8	6	38'-2"	—
b1(E)	8	6	40'-4"	—
x(E)	70	5	2'-6"	└
Concrete Removal			Cu. Yd	23
Concrete Superstructure			Cu. Yd	23
Bar Splicers			Each	24
Reinforcement Bars, Epoxy Coated			Pound	2671

MODEL: Default
FILE NAME: \\kpff.com\dfs\Bridges\2400738 (WO #11-SN 101-0046)\02_Design (MS)\64U00-14 - Barrier Sections.dgn

1560 Sherman Ave, Suite 1020
Evanston, IL 60201

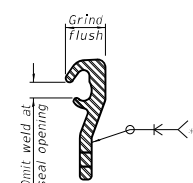
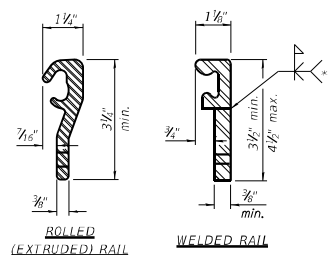
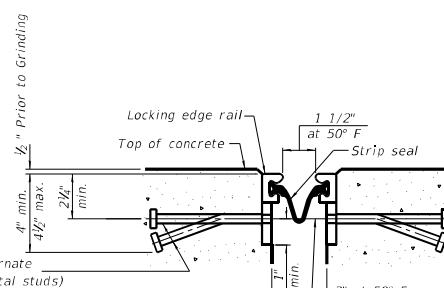
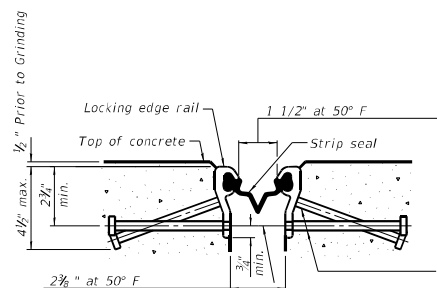
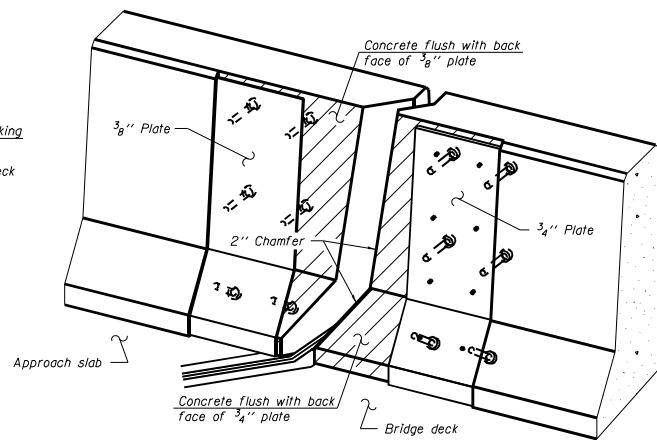
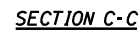
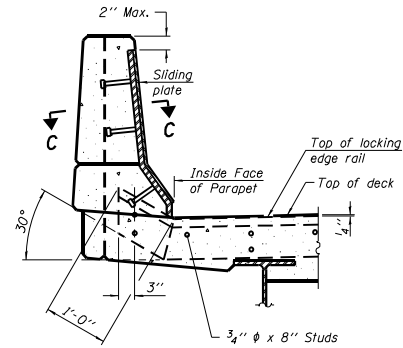
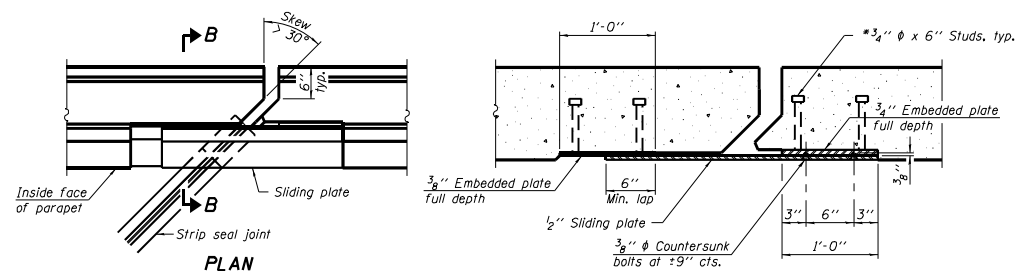
847-859-7790
www.kpff.com

USER NAME =	DESIGNED -	REVISED -
	CHECKED -	REVISED -
PLOT SCALE =	DRAWN -	REVISED -
PLOT DATE =	CHECKED -	REVISED -

STATE OF ILLINOIS
DEPARTMENT OF TRANSPORTATION

BARRIER DETAILS
SN 101-0046

F.A.I RTE.	SECTION	COUNTY	TOTAL SHEETS	SHEET NO.
301	(1-IHB)BDR	WINNEBAGO	25	14
CONTRACT NO. 64U00				
ILLINOIS FED. AID PROJECT				



Notes:

The strip seal shall be made continuous and shall have a minimum thickness of $\frac{1}{4}$ ". The configuration of the strip seal shall match the configuration of the locking edge rails. Open or "webbed" strip seal gland configurations are not permitted. The gland shall be sized for a maximum rated movement of 4 inches.

The locking edge rails depicted are configured for typical applications and are conceptual only. The actual configuration of the locking edge rails and matching strip seal may vary from manufacturer to manufacturer provided they fit the application and meet the minimum anchorage shown. Flanged edge rails, however, will not be allowed. Locking edge rails may exceed the 4½" maximum depth provided the anchorage system is revised according to the manufacturer's recommendation.

The manufacturer's recommended installation methods shall be followed.

All steel components shall be galvanized after fabrication according to Article 520.03 of the Standard Specifications.

The Maximum space between locking edge rail segments shall be $\frac{3}{16}$ " and sealed with a suitable sealant; however, any rail joint within 10' measured perpendicular to the face of the curb or parapet shall be welded as shown in the locking edge rail splice detail.

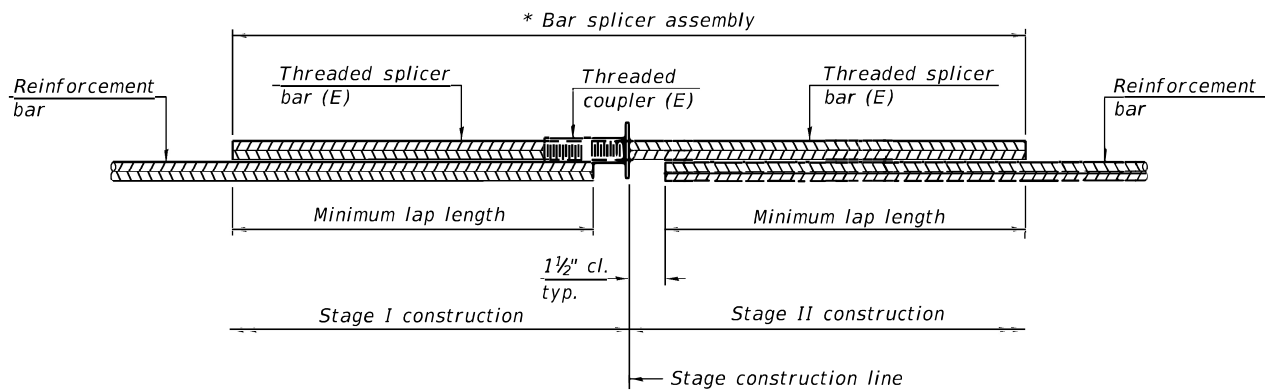
The top surface of sidewalk sliding plates shall have a raised pattern according to ASTM A786.

Cost of parapet sliding plates, sidewalk sliding plates, embedded plates, anchorage studs, and expansion anchors included with Preformed Joint Strip Seal.

39" constant slope barrier shown, 44" constant slope barrier similar as noted.

The concrete opening below the strip seal will vary based on the locking edge rail chosen by the Contractor. Deck and parapet lengths shown elsewhere in the plans are dimensioned to the concrete opening, not the joint opening, and are based on the rolled locking edge rail. If the Contractor elects to use a different locking edge rail, dimensional adjustments may be required. One exception to this would be the strip seal joint at the end of the precast bridge approach slab. For these cases the pavement connector length shall be adjusted, not the length of the bridge approach slab.

MODEL: Default
FILE NAME: \\kpff.com\dfs\Bridges\2400738 (WO #11- SN 101-0046)\02_Design (MS)\64U00-16 -Bar Splicers.dgn

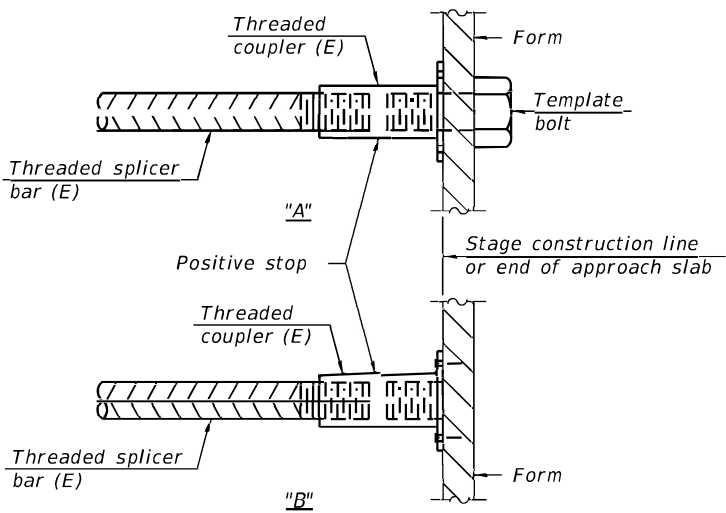


STANDARD BAR SPLICER ASSEMBLY PLAN
(All components shall be provided from one supplier)

Threaded splicer bar length = min. lap length + 1½" + thread length

* Epoxy not required on Bar Splicer Assembly components used in conjunction with black bars.

Location	Bar size	No. assemblies required	Minimum lap length
Deck	#5	16	3'-6"
Abutment	#6	8	4'-0"



INSTALLATION AND SETTING METHODS

"A" : Set bar splicer assembly by means of a template bolt.

"B" : Set bar splicer assembly by nailing to wood forms or cementing to steel forms.

(E) : Indicates epoxy coating.

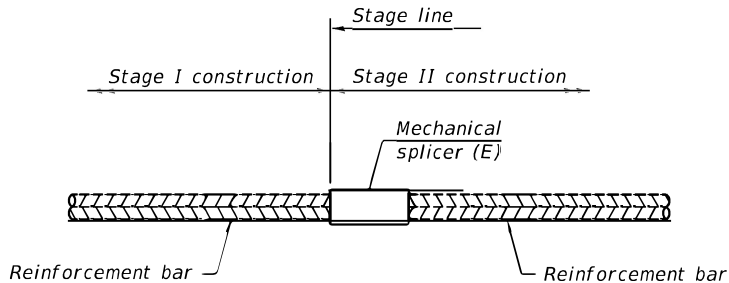
Notes:

Splicer bars shall be deformed with threaded ends and have a minimum 60 ksi yield strength.

All reinforcement shall be lapped and tied to the splicer bars.

Bar splicer assemblies shall be epoxy coated according to the requirements for reinforcement bars. See Section 508 of the Standard Specifications.

See approved list of bar splicer assemblies and mechanical splicers for alternatives.

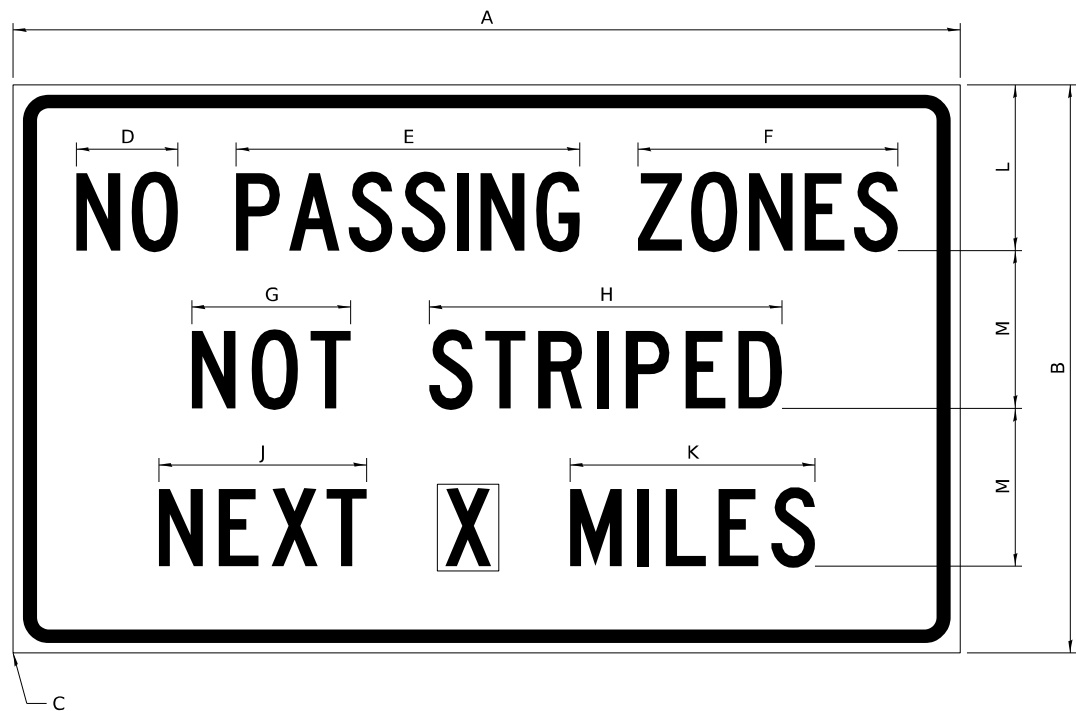


STANDARD MECHANICAL SPLICER

Location	Bar size	No. assemblies required

WORK ZONE SIGN DETAILS

ILLINOIS STANDARD G20-I100



COLOR LEGEND AND BORDER BACKGROUND BLACK ORANGE NON-REFLECTORIZED REFLECTORIZED

SIGN SIZE	DIMENSIONS											
	A	B	C	D	E	F	G	H	J	K	L	M
60 x 36	60.00	36.00	2.25	6.4	21.80	16.40	10.00	22.40	13.20	15.50	10.50	10.00

SIGN SIZE	SERIES BY LINE			MARGIN	BORDER
	1	2	3		
60 x 36	5C	5C	5C	0.625	0.875

Sign not to scale

GENERAL NOTES

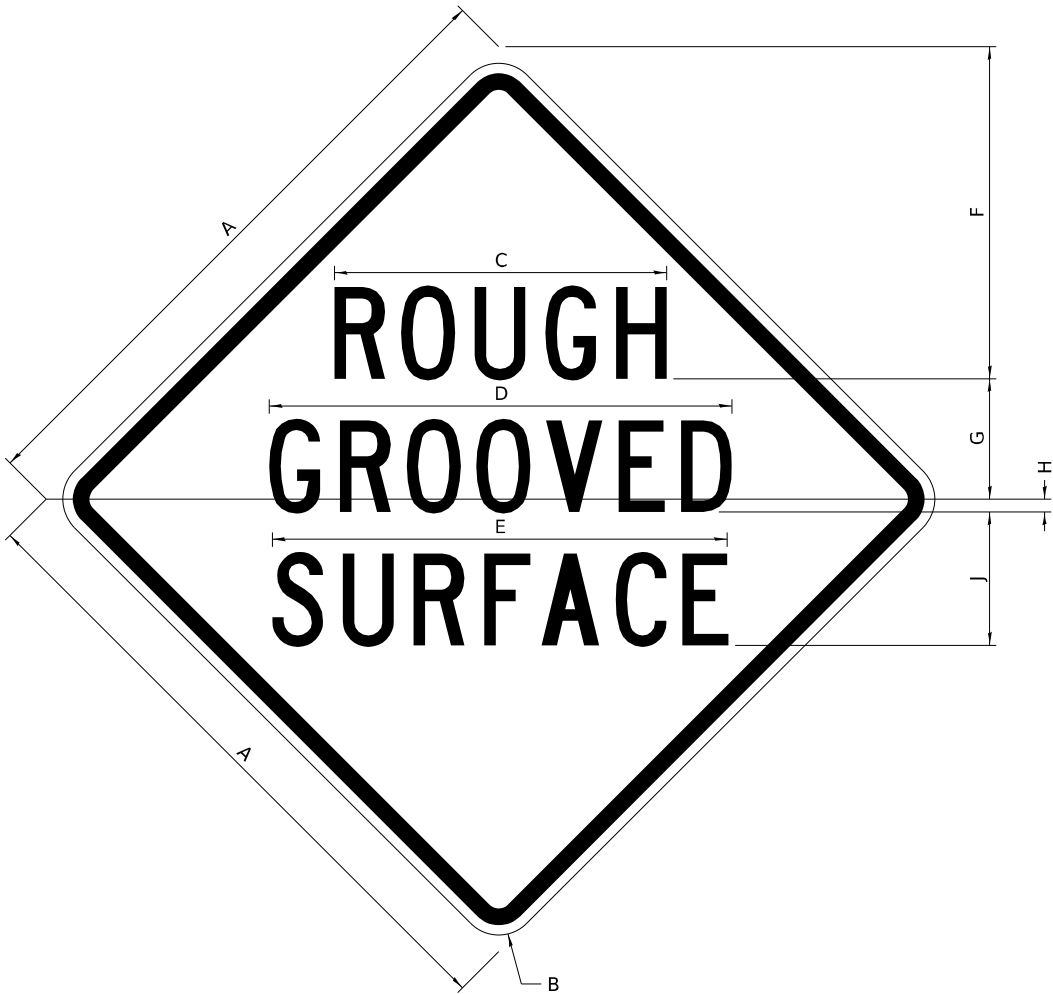
All work to furnish and install these signs shall be included in the cost of the specified traffic control standards and shall not be paid separately.

All Illinois Standard signs shall conform to the latest edition of the "Illinois Standard Highway Signs Book" in effect on the date of invitation for bids.

Signs shall meet the applicable portions of Sections 701 and 720 of the Standard Specifications.

All dimensions are in inches unless otherwise noted.

ILLINOIS STANDARD W8-I107



COLOR LEGEND AND BORDER BACKGROUND BLACK ORANGE NON-REFLECTORIZED REFLECTORIZED

SIGN SIZE	DIMENSIONS								
	A	B	C	D	E	F	G	H	J
48 x 48	48.00	3.00	25.00	34.80	34.20	24.94	9.00	1.00	10.00

SIGN SIZE	SERIES BY LINE			MARGIN	BORDER
	1	2	3		
48 x 48	7C	7C	7C	1.250	0.750

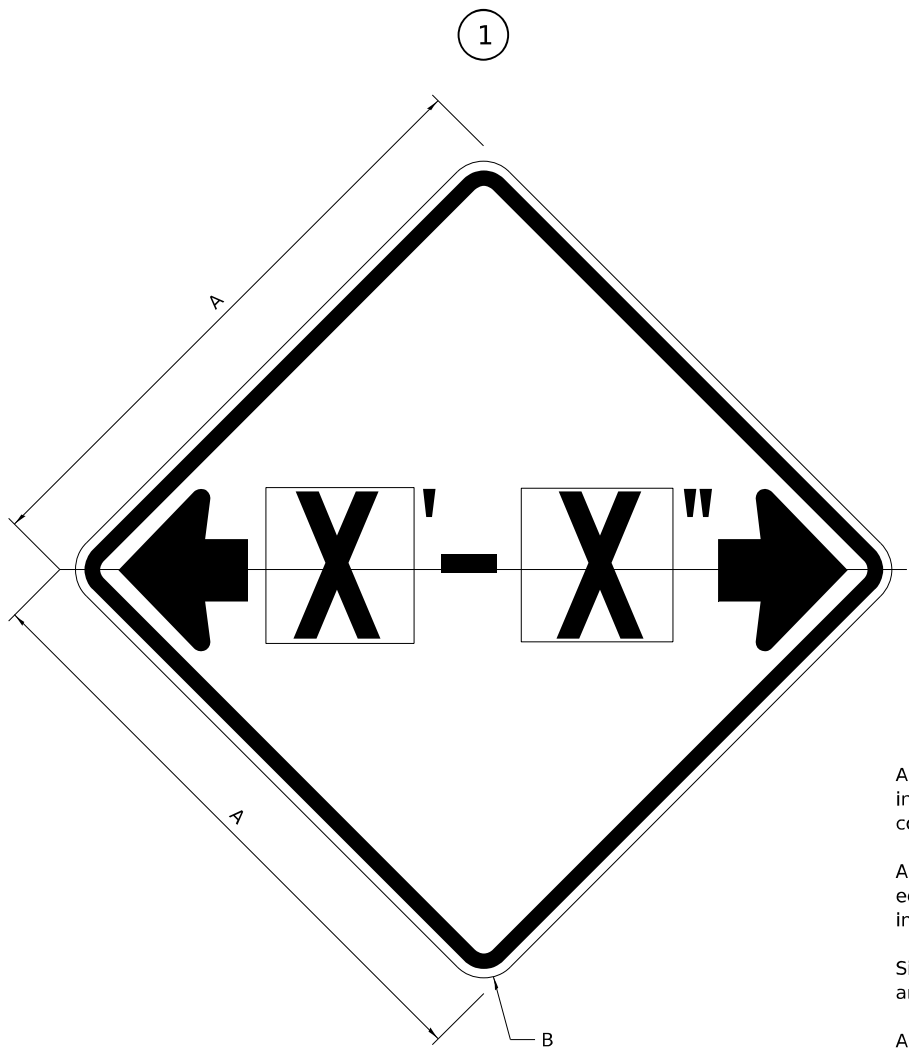
Sign not to scale

MODEL: Default
FILE NAME: L:\8008 KPF\8008.00\PTB 206.023 Bridge Rehab (23903)\WO 11 -US20WB over US20BusEB\CI\03 CAD\01 Model\D-2 Specific Standards\0264U00-std 34, 1-sht1.dgn

	USER NAME = akobbah	DESIGNED - MGB	REVISED - 3-02-16	STATE OF ILLINOIS DEPARTMENT OF TRANSPORTATION	WESTBOUND US 20 CROSSING EASTBOUND BUS US 20 REGION 2 / DISTRICT 2 STANDARD				F.A.U. RTE.	SECTION	COUNTY	TOTAL SHEETS	SHEET NO.	
		DRAWN - MGB	REVISED -						301	(1-1HB)BDR	WINNEBAGO	25	17	
		CHECKED - HJH	REVISED -						CONTRACT NO. 64U00					
	PLOT DATE = 2/3/2025	DATE -	REVISED -		SCALE: N.A.	SHEET 1	OF 4	SHEETS	STA.	TO STA.				
	ILLINOIS FED. AID PROJECT													

ILLINOIS STANDARD W12-I102

WORK ZONE SIGN DETAILS



GENERAL NOTES

All work to furnish and install these signs shall be included in the cost of the specified traffic control standards and shall not be paid separately.

All Illinois Standard signs shall conform to the latest edition of the "Illinois Standard Highway Signs Book" in effect on the date of invitation for bids.

Signs shall meet the applicable portions of Sections 701 and 720 of the Standard Specifications.

All dimensions are in inches unless otherwise noted.

COLOR	LEGEND AND BORDER BACKGROUND	BLACK FL ORANGE	NON-REFLECTORIZED REFLECTORIZED
-------	------------------------------	-----------------	---------------------------------

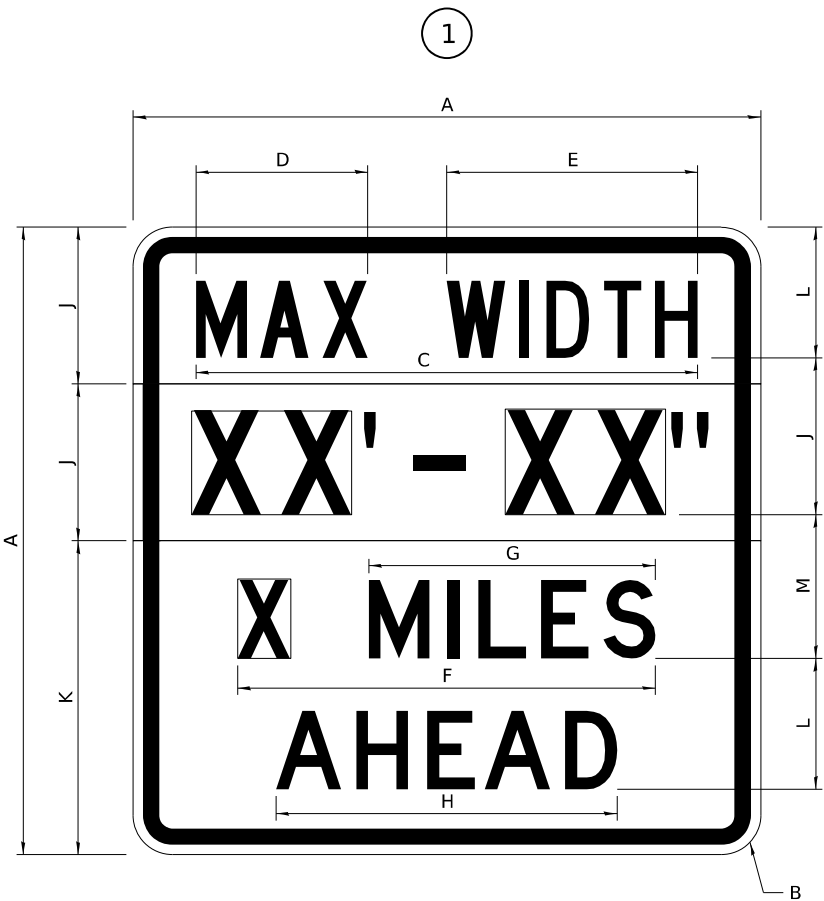
SIGN SIZE	DIMENSIONS	
	A	B
48 x 48	48.00	3.00

1 Illinois Standard signs W12-I102 and W12-I103 shall be used as described in the special provisions.

SIGN SIZE	SERIES BY LINE	MARGIN	BORDER
	1		
48 x 48	12C	0.750	1.250

Sign not to scale

ILLINOIS STANDARD W12-I103



COLOR	LEGEND AND BORDER BACKGROUND	BLACK WHITE FL ORANGE	NON-REFLECTORIZED REFLECTORIZED REFLECTORIZED
-------	------------------------------	-----------------------	---

SIGN SIZE	DIMENSIONS											
	A	B	C	D	E	F	G	H	J	K	L	M
48 x 48	48.00	3.00	38.40	13.20	19.20	32.00	22.00	26.20	12.00	24.00	10.00	11.00

SIGN SIZE	SERIES BY LINE				MARGIN	BORDER
	1	2	3	4		
48 x 48	6C	8D	6D	6D	0.750	1.250

Sign not to scale

XX'-XX" WIDTH AND X MILES ARE VARIABLE
TOP AND BOTTOM OF BACKGROUND WHITE

MODEL: Default
FILE NAME: L:\8008 KFFF\8008.001\PTB 206.023 Bridge Rehab (23903)\WO 11 -US20WB over US20BusEB\Civil\03 CAD\01 Model\B-z Specific Standards\B264U00-std 34.1-sh2.dgn

USER NAME = akobbah	DESIGNED - MGB	REVISED - 3-02-16
	DRAWN - MGB	REVISED -
	CHECKED - HJH	REVISED -
PLOT DATE = 2/3/2025	DATE -	REVISED -

STATE OF ILLINOIS
DEPARTMENT OF TRANSPORTATION

WESTBOUND US 20 CROSSING EASTBOUND BUS US 20
REGION 2 / DISTRICT 2 STANDARD

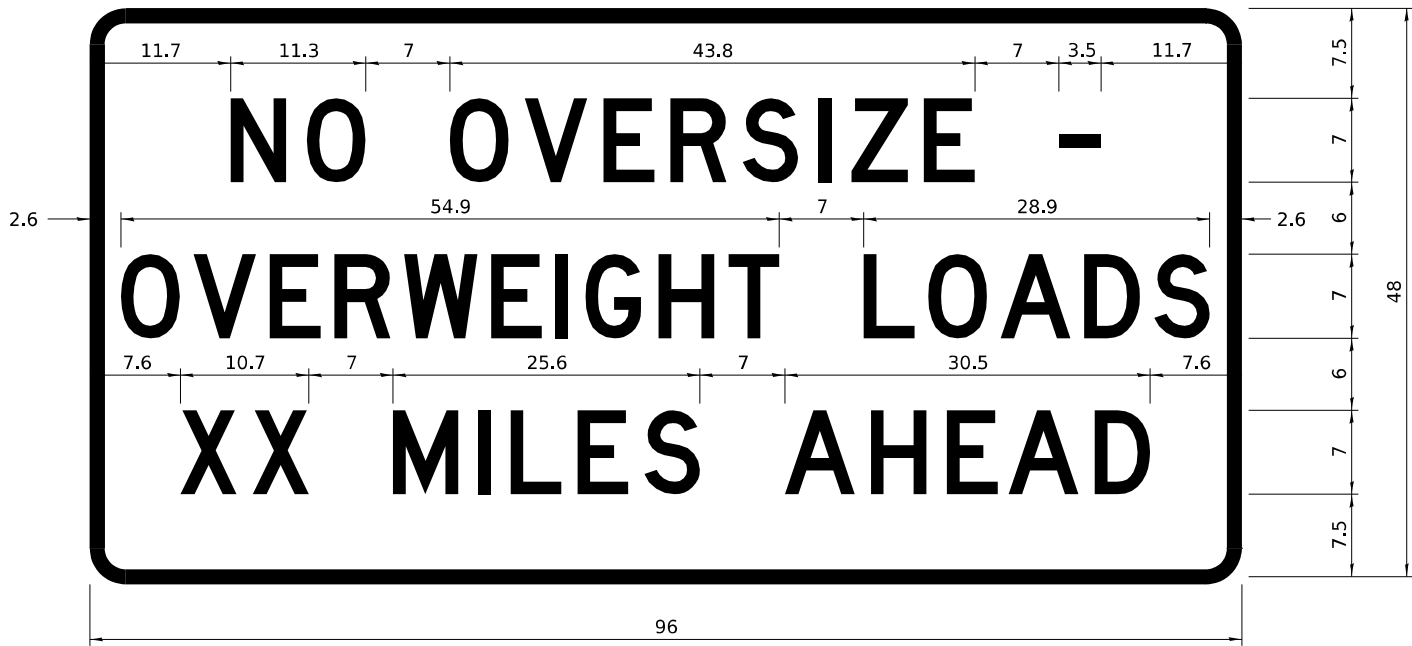
SCALE: N.A. SHEET 2 OF 4 SHEETS STA. TO STA.

F.A.P. RTE.	SECTION	COUNTY	TOTAL SHEETS	SHEET NO.
301	(1-1HB)BDR	WINNEBAGO	25	18
CONTRACT NO. 64U00				
ILLINOIS FED. AID PROJECT				

WORK ZONE SIGN DETAILS

STOP LINE SIGN FOR TEMPORARY SIGNALS

ROAD CLOSED TO OVERSIZED LOADS



COLOR LEGEND AND BORDER BACKGROUND BLACK ORANGE NON-REFLECTORIZED REFLECTORIZED

Permit Loads - Loads Over 13 Feet; 3.0" Radius, 1.3" Border;
[NO OVERSIZE -] D; [OVERWEIGHT LOADS] D 85% spacing; [XX MILES AHEAD] D;
Table of letter and object lefts.

N	O	O	V	E	R	S	I	Z	E	-
11.7	18.1	30.0	36.2	42.8	48.4	54.4	60.7	63.5	69.5	80.8

O	V	E	R	W	E	I	G	H	T	L	O	A	D	S
2.6	8.6	15.0	20.4	26.2	33.4	38.8	41.3	47.4	53.2	64.5	69.9	75.9	82.9	88.7

X	X	M	I	L	E	S	A	H	E	A	D
7.6	13.6	25.3	32.3	35.1	40.6	46.2	57.9	65.1	71.4	76.6	83.7

Sign not to scale

COLOR LEGEND AND BORDER BACKGROUND BLACK WHITE NON-REFLECTORIZED REFLECTORIZED

SIGN SIZE	SERIES BY LINE		
	1	2	3
24 x 24	4C	4C	4C

Sign not to scale

GENERAL NOTES

All work to furnish and install these signs shall be included in the cost of the specified traffic control standards and shall not be paid separately.

All Illinois Standard signs shall conform to the latest edition of the "Illinois Standard Highway Signs Book" in effect on the date of invitation for bids.

Signs shall meet the applicable portions of Sections 701 and 720 of the Standard Specifications.

All dimensions are in inches unless otherwise noted.

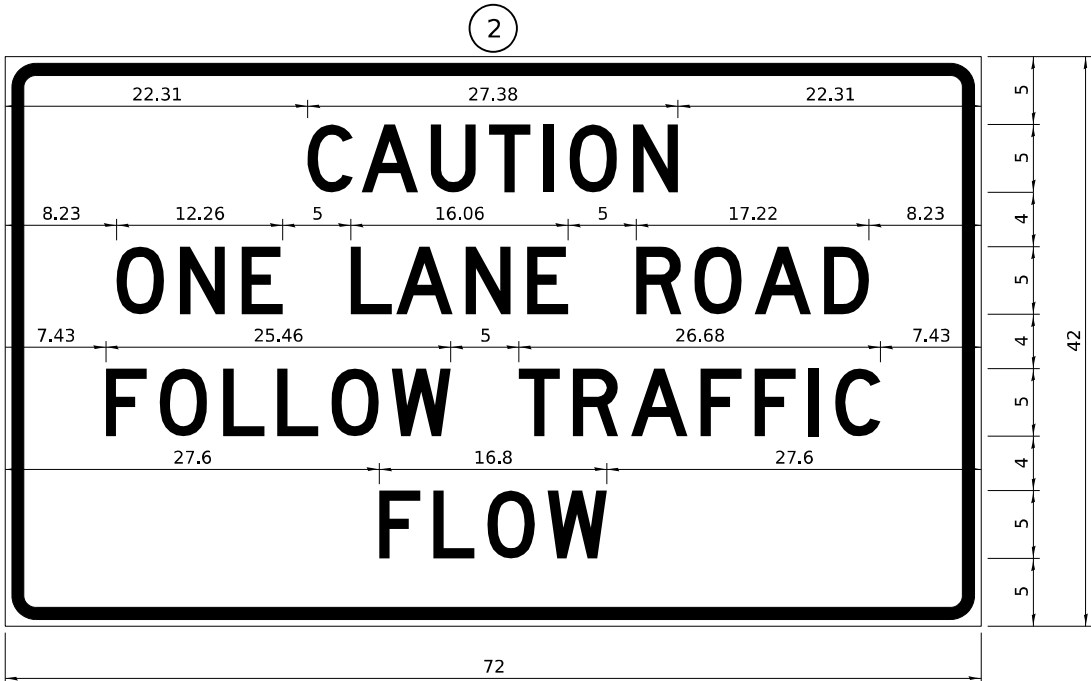
MODEL: Default
FILE NAME: L:\8008 KPF\F8008.00\PTB 206.023 Bridge Rehab (23903)\WO 11 -US20WB over US20BusEB\CH\03 CAD\01 Model\D-2 Specific Standards\D294LU00-std 34.t-sh3.dgn

	USER NAME = akobbah	DESIGNED - MGB	REVISED - 3-02-16	STATE OF ILLINOIS DEPARTMENT OF TRANSPORTATION	WESTBOUND US 20 CROSSING EASTBOUND BUS US 20 REGION 2 / DISTRICT 2 STANDARD				F.A.P. RTE.	SECTION	COUNTY	TOTAL SHEETS	SHEET NO.	
		DRAWN - MGB	REVISED -						301	(1-1HB)BDR	WINNEBAGO	25	19	
		CHECKED - HJH	REVISED -						CONTRACT NO. 64U00					
	PLOT DATE = 2/3/2025	DATE -	REVISED -		SCALE: N.A.	SHEET 3	OF 4	SHEETS	STA.	TO STA.	ILLINOIS FED. AID PROJECT			

ENTRANCE SIGN FOR USE
WITH TEMPORARY SIGNALS

WORK ZONE SIGN DETAILS

STAY IN YOUR LANE



COLOR LEGEND AND BORDER
BACKGROUND BLACK
ORANGE NON-REFLECTORIZED
REFLECTORIZED

2.25" Radius, 0.88" Border, 0.50" IndentT;
[CAUTION] D; [ONE LANE ROAD] D;
[FOLLOW TRAFFIC] D; [FLOW] D

2 This sign shall be installed at entrances located between
the temporary signals as shown in the staging plans.

Table Of Widths And Spaces

22.31	C	3.36	0.62	A	4.18	0.94	U	3.36	0.94	T	3.04	0.94	I	0.78	1.17	O	3.52	1.17	N	3.36	22.31
-------	---	------	------	---	------	------	---	------	------	---	------	------	---	------	------	---	------	------	---	------	-------

8.23	O	3.51	1.17	N	3.36	1.18	E	3.04
------	---	------	------	---	------	------	---	------

5.00	L	3.05	0.31	A	4.18	0.94	N	3.36	1.17	E	3.05
------	---	------	------	---	------	------	---	------	------	---	------

5.00	R	3.36	0.93	O	3.52	0.94	A	4.18	0.93	D	3.36	8.23
------	---	------	------	---	------	------	---	------	------	---	------	------

7.43	F	3.04	0.94	O	3.52	1.17	L	3.04	0.94	L	3.05	0.94	O	3.51	0.94	W	4.37
------	---	------	------	---	------	------	---	------	------	---	------	------	---	------	------	---	------

5.00	T	3.05	0.94	R	3.36	0.94	A	4.18	0.93	F	3.05	0.94	F	3.04	0.94	I	0.78	1.18	C	3.35	7.43
------	---	------	------	---	------	------	---	------	------	---	------	------	---	------	------	---	------	------	---	------	------

27.60	F	3.05	0.94	L	3.04	0.94	O	3.52	0.93	W	4.38	27.60
-------	---	------	------	---	------	------	---	------	------	---	------	-------

Sign not to scale

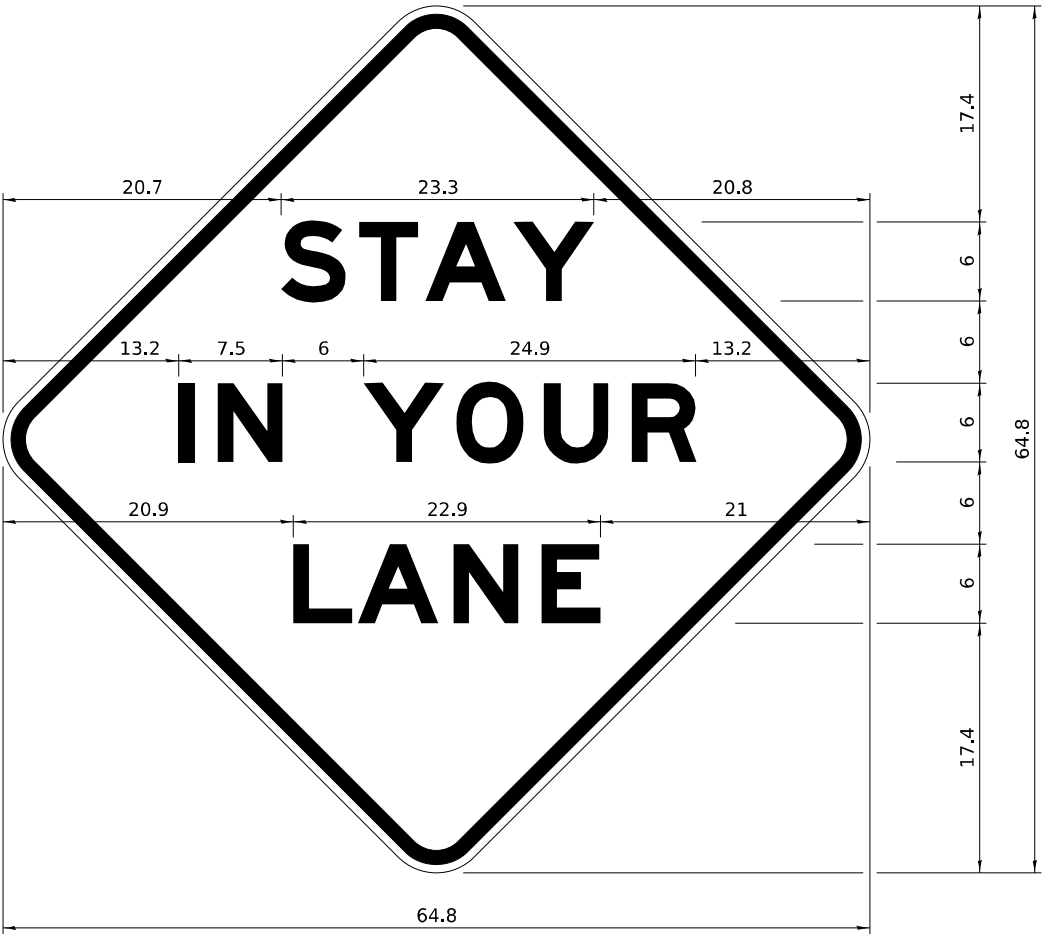
GENERAL NOTES

All work to furnish and install these signs shall be included in the cost of the specified traffic control standards and shall not be paid separately.

All Illinois Standard signs shall conform to the latest edition of the "Illinois Standard Highway Signs Book" in effect on the date of invitation for bids.

Signs shall meet the applicable portions of Sections 701 and 720 of the Standard Specifications.

All dimensions are in inches unless otherwise noted.



COLOR LEGEND AND BORDER
BACKGROUND BLACK
ORANGE NON-REFLECTORIZED
REFLECTORIZED

48.0" across sides 3.8" Radius, 1.0" Border, 0.6" Indent;
"STAY" E Mod; "IN YOUR" E Mod; "LANE" E Mod;

Table of Letter and Object Lefts

S	T	A	Y
20.7	26.8	31.6	38.0

I	N	Y	O	U	R
13.2	15.9	26.7	33.9	40.5	46.8

L	A	N	E
20.9	25.8	33.1	39.4

Sign not to scale

MODEL: Default
FILE NAME: L:\8008 KFFB8008.001PTB 206.023 Bridge Rehab (23903)\WO 11 -JUS20WB over US20BusEB\Ch\03 CAD\01 Model\D-2 Specific Standards\D264LU00-std 34, 1-sht4.dgn

USER NAME = akobbah	DESIGNED - MGB	REVISED - 3-02-16
	DRAWN - MGB	REVISED -
	CHECKED - HJH	REVISED -
PLOT DATE = 2/3/2025	DATE -	REVISED -

STATE OF ILLINOIS
DEPARTMENT OF TRANSPORTATION

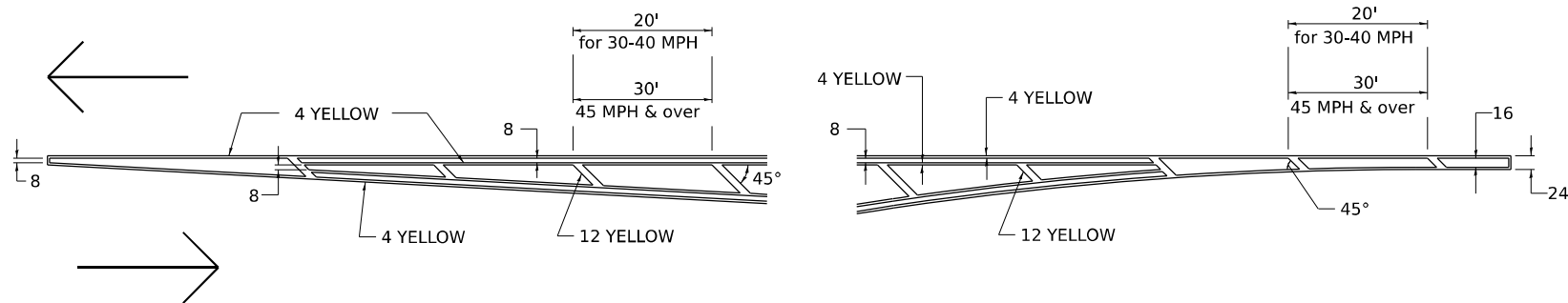
WESTBOUND US 20 CROSSING EASTBOUND BUS US 20
REGION 2 / DISTRICT 2 STANDARD

SCALE: N.A. SHEET 4 OF 4 SHEETS STA. TO STA.

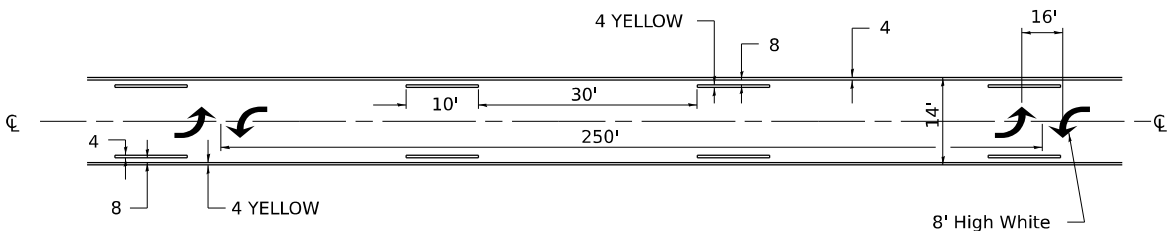
F.A.P. RTE.	SECTION	COUNTY	TOTAL SHEETS	SHEET NO.
301	(1-1HB)BDR	WINNEBAGO	25	20
CONTRACT NO. 64U00				
ILLINOIS FED. AID PROJECT				

TYPICAL PAVEMENT MARKINGS

TYPICAL PAVEMENT MARKING FOR FLUSH MEDIAN AT LEFT TURN LANE

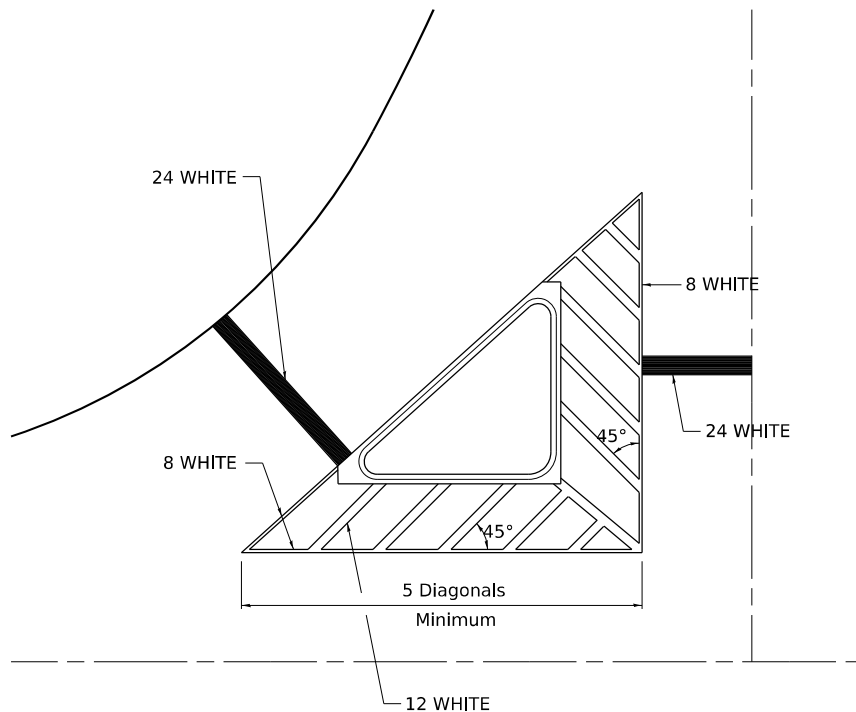


MEDIAN PAVEMENT MARKING



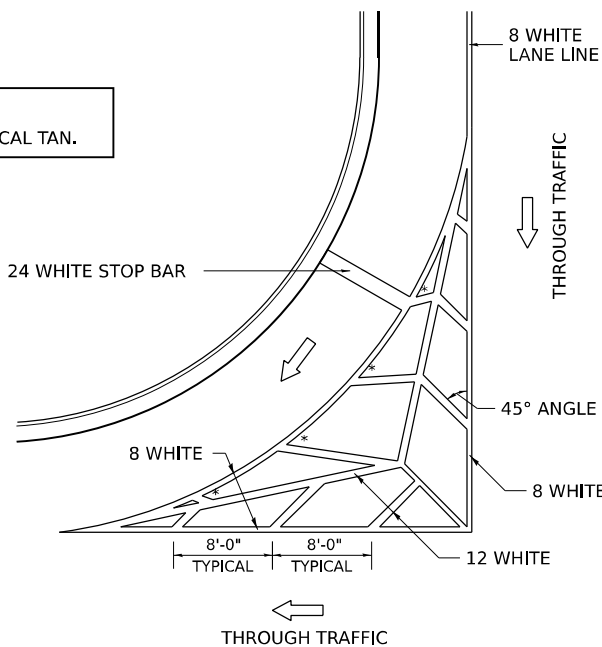
** ALL DIMENSIONS ARE IN INCHES UNLESS OTHERWISE NOTED.

TYPICAL ISLAND OFFSET SHOULDER WIDTH



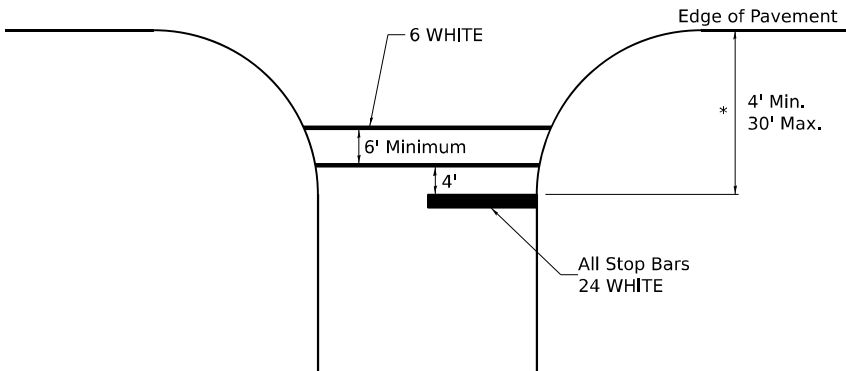
TYPICAL MARKING FOR PAINTED ISLANDS

NOTE:
* 45° TO LOCAL TAN.



STANDARD CROSSWALK MARKING

See Schedules for Locations



* Distance to the nearest edge of the intersecting roadway in the absence of a marked crosswalk.

Sign not to scale

MODEL: Default
FILE NAME: L:\8008 KPFF\8008.001\PTB 206.023 Bridge Rehab (23903)\WO 11-US20WB over US20BusEB\Civil\03 CAD\01 Model\ID-2 Specific Standards\ID2-std 41.1-sh1.dgn

USER NAME	= akobbah	DESIGNED	-	MGB	REVISED	-	6-27-14
		DRAWN	-	MGB	REVISED	-	3-05-12
		CHECKED	-	HJH	REVISED	-	
PLOT DATE	= 2/3/2025	DATE	-		REVISED	-	

STATE OF ILLINOIS
DEPARTMENT OF TRANSPORTATION

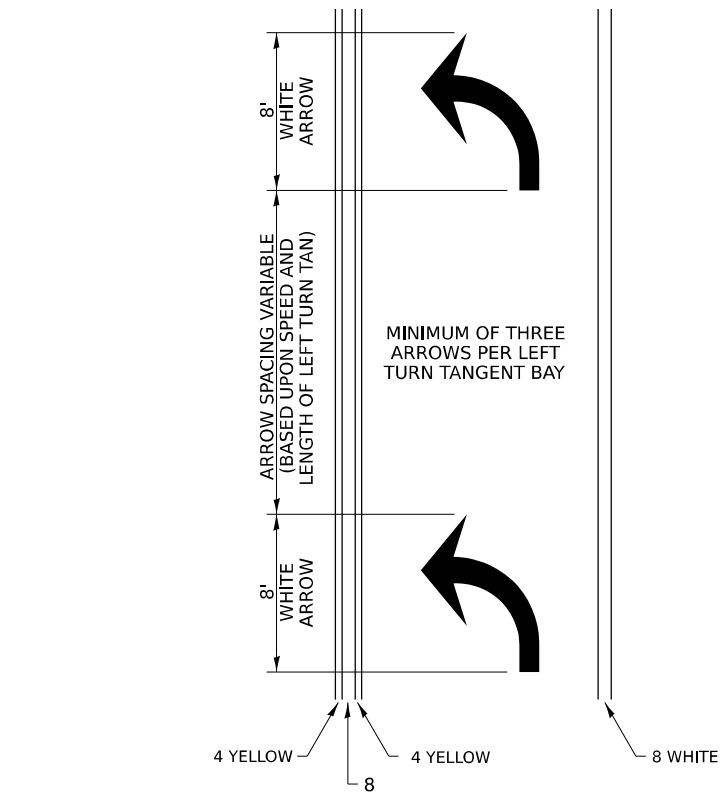
WESTBOUND US 20 CROSSING EASTBOUND BUS US 20
REGION 2 / DISTRICT 2 STANDARD

SCALE: N.A. SHEET 1 OF 4 SHEETS STA. TO STA.

F.A.P. RTE. 301	SECTION (1-1HB)BDR	COUNTY WINNEBAGO	TOTAL SHEETS 25	SHEET NO. 21
CONTRACT NO. 64T20				
ILLINOIS FED. AID PROJECT				

TYPICAL PAVEMENT MARKINGS

ARROW LAYOUT

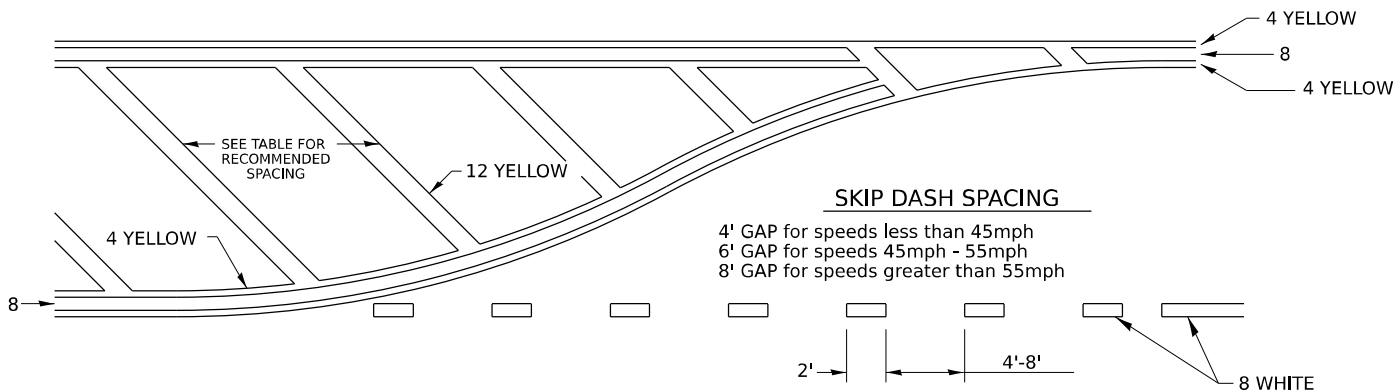


SYMBOLS

- ONE-WAY AMBER MARKER
- ONE-WAY CRYSTAL MARKER
- TWO-WAY AMBER MARKER

ALL DIMENSIONS ARE IN INCHES UNLESS OTHERWISE NOTED.

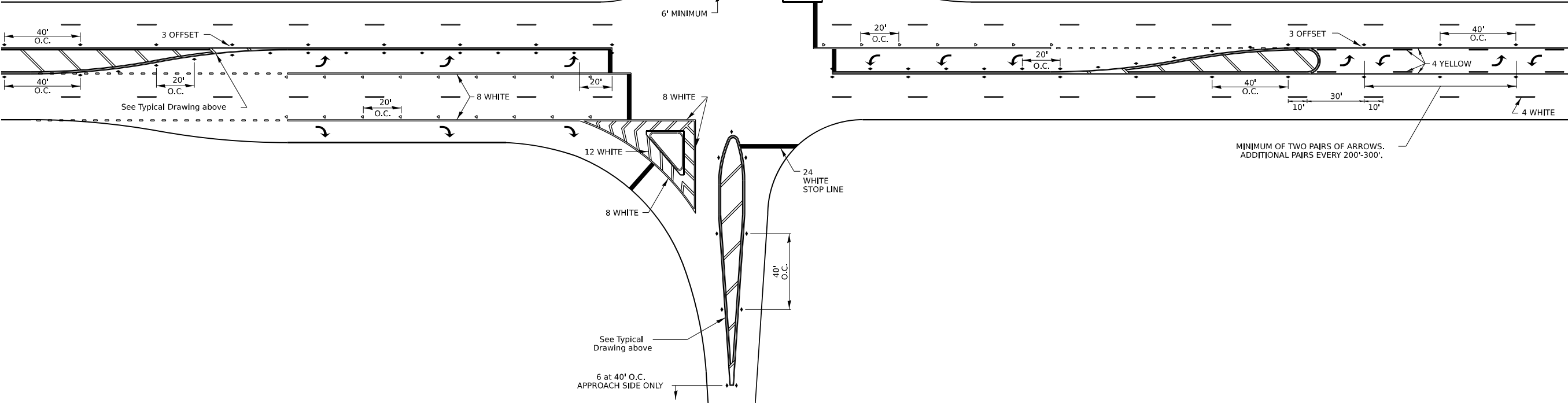
TYPICAL PAVEMENT MARKING FOR FLUSH MEDIAN



RECOMMENDED SPACING BETWEEN DIAGONALS (IN FEET)

Speed Limit Range	Continuous Median Area	Intersection Channelization	Objects (Islands)
less than 30MPH	50'	15'	10'
30-40MPH	75'	20'	15'
45MPH & over	75'	30'	20'

NOTE: if the spacing recommended in the Table does not permit at least five diagonal lines in the area being marked, the spacing from the next lowest speed range should be used. The recommended spacing is measured parallel to the pavement center line.



MODEL: Default
FILE NAME: L:\8008 KPFF\8008.001\PTB 206.023 Bridge Rehab (23903)\WO 11 -US20WB over US20BusEB\Civil\03 CAD\01 Model\D-2 Specific Standards\02std 41.1-sh12.dgn

USER NAME = akobbah	DESIGNED - MGB	REVISED - 6-27-14
	DRAWN - MGB	REVISED - 3-05-12
	CHECKED - HJH	REVISED -
PLOT DATE = 2/3/2025	DATE -	REVISED -

STATE OF ILLINOIS
DEPARTMENT OF TRANSPORTATION

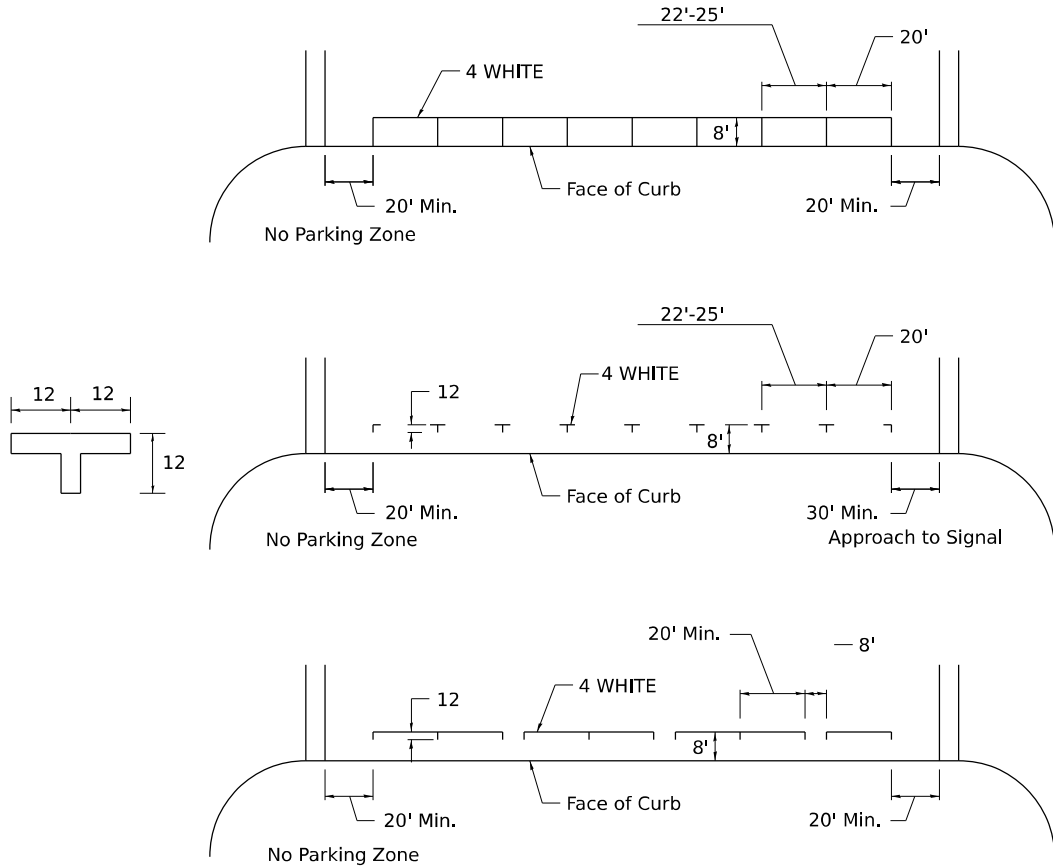
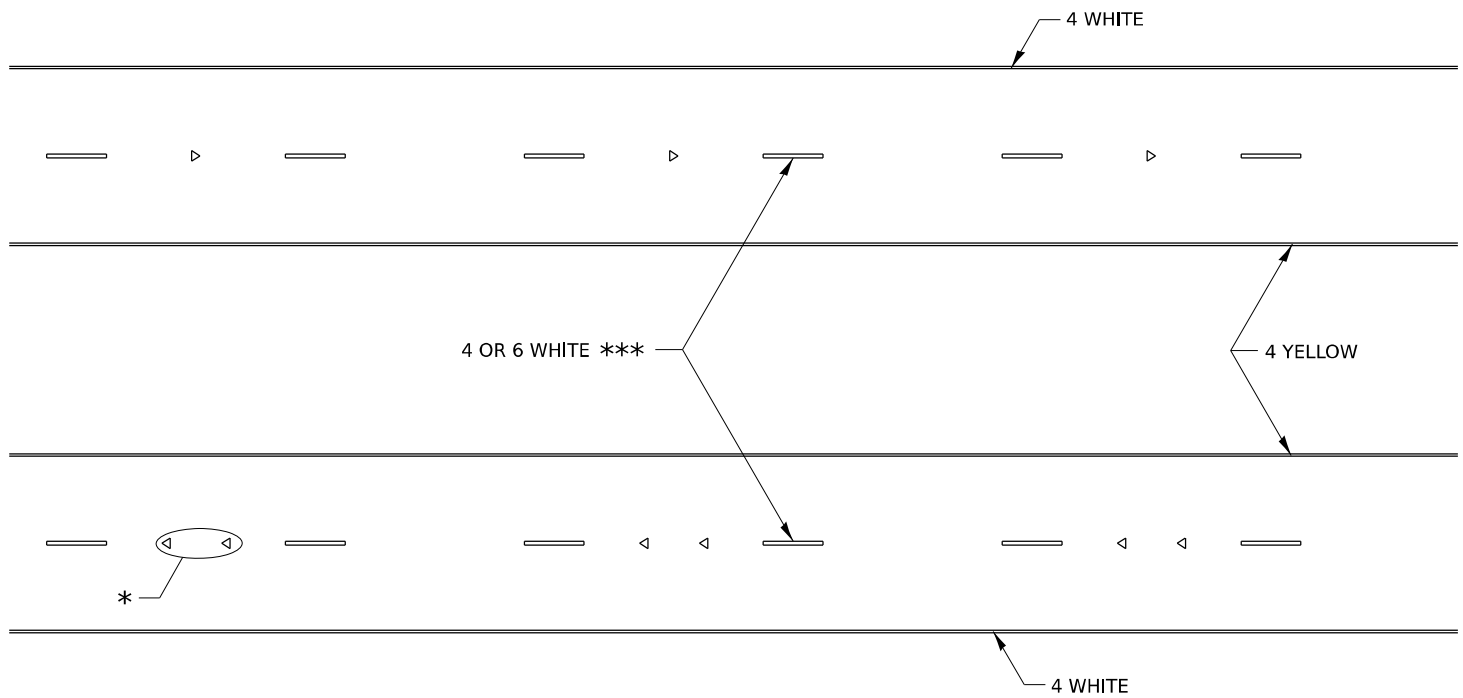
WESTBOUND US 20 CROSSING EASTBOUND BUS US 20
REGION 2 / DISTRICT 2 STANDARD

SCALE: N.A. SHEET 2 OF 4 SHEETS STA. TO STA.

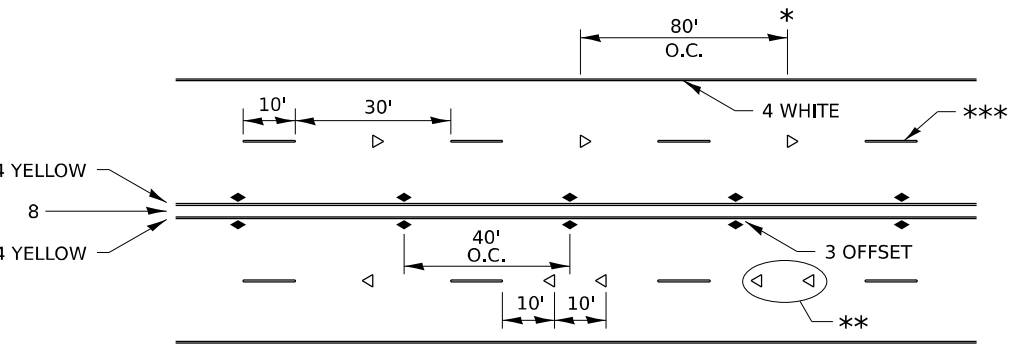
F.A.P. RTE. 301	SECTION (1-1HB)BDR	COUNTY WINNEBAGO	TOTAL SHEETS 25	SHEET NO. 22
CONTRACT NO. 64U00				
ILLINOIS FED. AID PROJECT				

TYPICAL PAVEMENT MARKINGS

TYPICAL PARKING SPACING

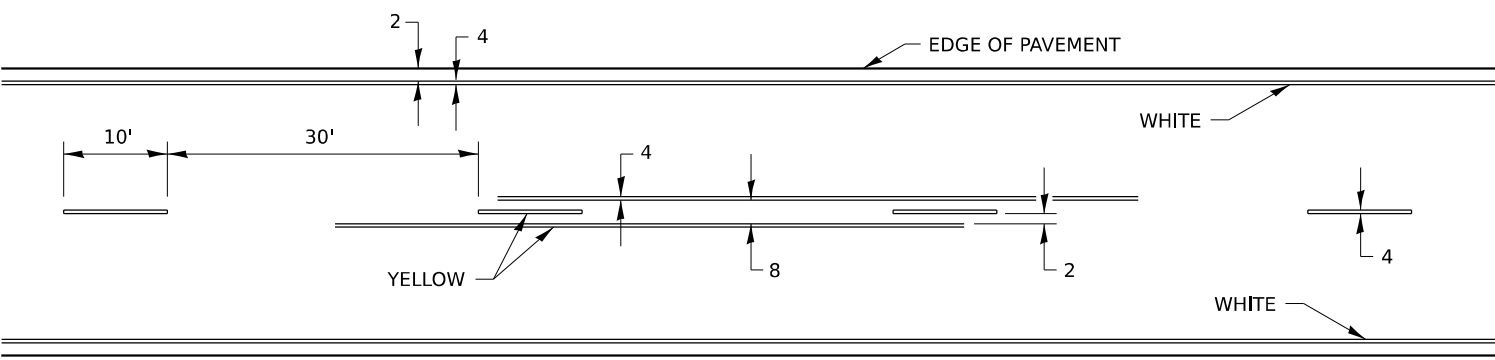


MULTI-LANE / DIVIDED



- * REDUCE TO 40' O.C. ON CURVES WHERE ADVISORY SPEEDS ARE 10 MPH LOWER THAN POSTED SPEEDS.
- ** USE DOUBLE MARKERS WHEN ADT ≥ 20,000
- *** CENTERLINE SKIP DASH PAVEMENT MARKING SPEED LIMIT LESS THAN 40 MPH USE 4" LINE. SPEED LIMIT 40 MPH AND OVER USE 6" LINE.

TYPICAL PAVEMENT MARKING FOR TWO LANE SECTION – NO PASSING ZONES



MULTI-LANE / UNDIVIDED & ONE WAY

(FOR MULTI-LANE UNDIVIDED HIGHWAYS USE THIS
DETAIL NOT HIGHWAY STANDARD 781001)

MODEL: Default
FILE NAME: L:\8008 KPFF\8008\001\PTB 206\023 Bridge Rehab (23903)\WO 11 -US20WB over US20B\SEB\Civil\03 CAD\01 ModelID-2 Specific Standards\ID264\UOB-std 41.1-sh13.dgn

	USER NAME = akobbah	DESIGNED - MGB	REVISED - 6-27-14	STATE OF ILLINOIS DEPARTMENT OF TRANSPORTATION	WESTBOUND US 20 CROSSING EASTBOUND BUS US 20 REGION 2 / DISTRICT 2 STANDARD			F.A.P. RTE.	SECTION	COUNTY	TOTAL SHEETS	SHEET NO.
		DRAWN - MGB	REVISED - 8-27-13					301	(1-1HB)BDR	WINNEBAGO	25	23
		CHECKED - HJH	REVISED - 11-28-12					CONTRACT NO. 64T20				
	PLOT DATE = 2/3/2025	DATE -	REVISED -					ILLINOIS FED. AID PROJECT				

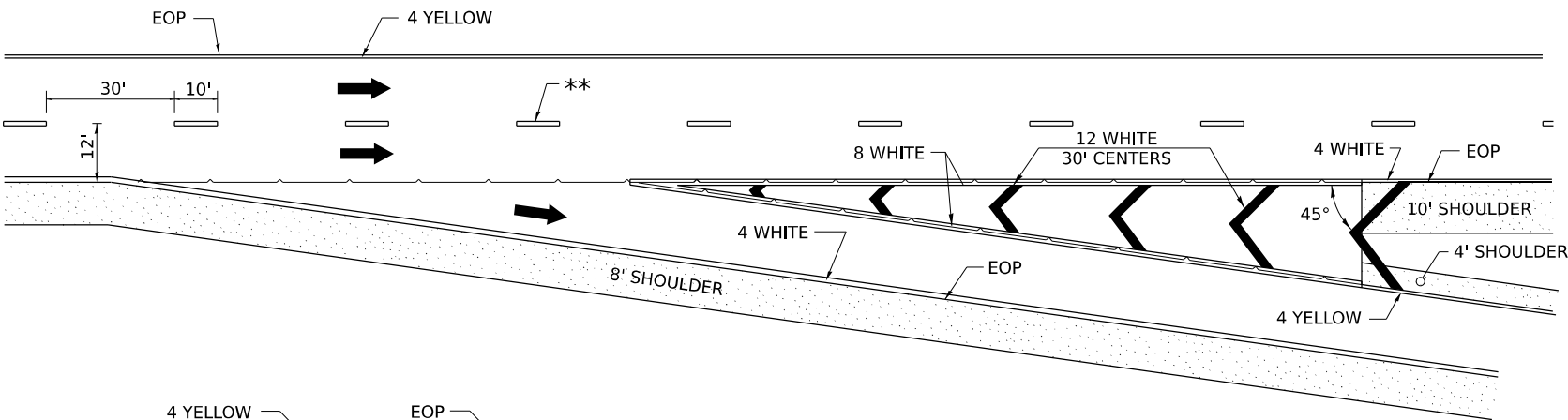
TYPICAL PAVEMENT MARKINGS

** 6" WHITE ON INTERSTATES, WHERE THE SPED LIMIT IS 65 MPH, OR WHEN DIRECTED BY THE ENGINEER.

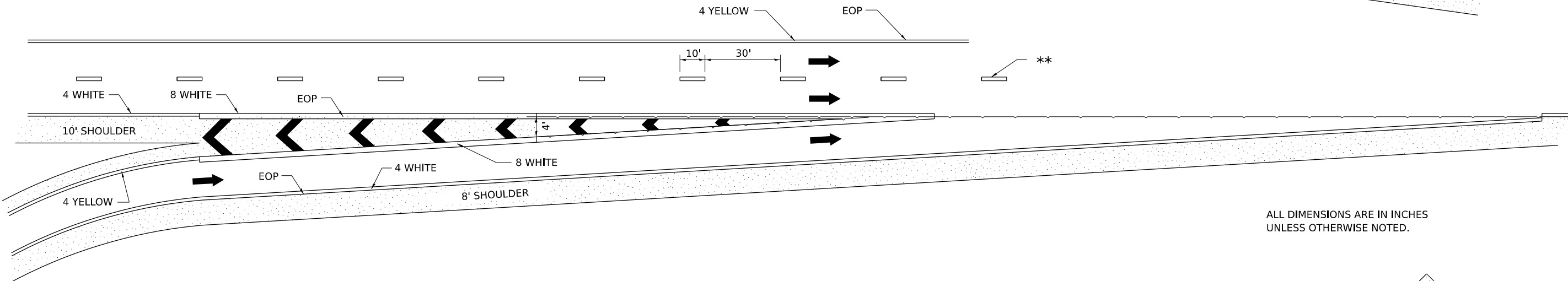
4" WIDE AT ALL OTHER LOCATIONS.

NOTE: GORE HATCHING PLACED ONLY WHEN SCHEDULED IN THE PLANS

EXIT RAMP

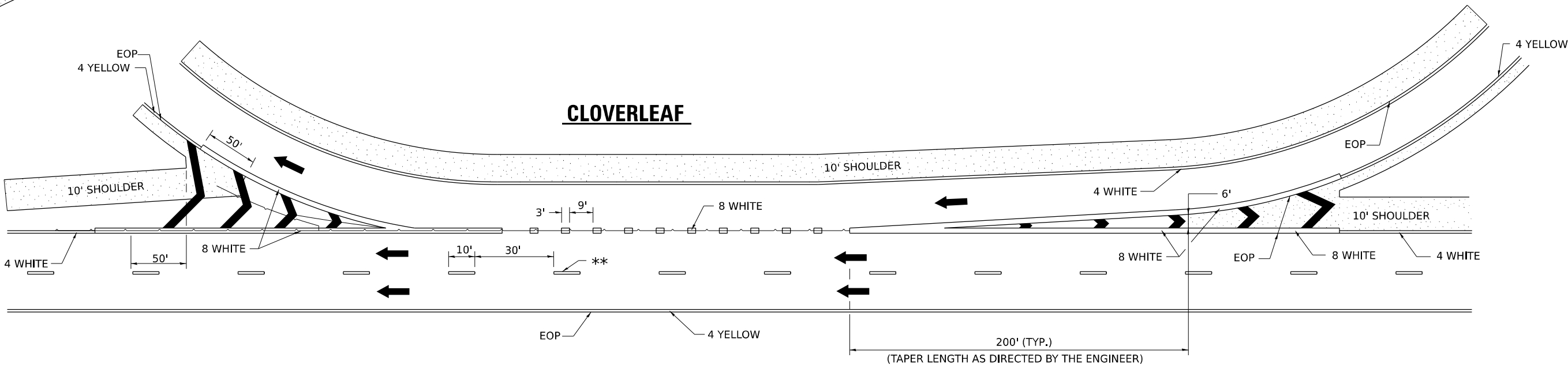


ENTRANCE RAMP



ALL DIMENSIONS ARE IN INCHES
UNLESS OTHERWISE NOTED.

CLOVERLEAF



MODEL: Default
FILE NAME: L:\38008 KPF\8008.001\PTB 206.023 Bridge Rehab (23903)\WO 11 -US20WB over US20BusEB\Civil\03 CAD\01 Model\02 Specific Standards\0264U00-std 41.1-shd.dgn

USER NAME = akobbah	DESIGNED - MGB	REVISED - 9-15-23
	DRAWN - MGB	REVISED - 8-27-13
	CHECKED - HJH	REVISED - 10-18-11
PLOT DATE = 2/3/2025	DATE -	REVISED -

STATE OF ILLINOIS
DEPARTMENT OF TRANSPORTATION

WESTBOUND US 20 CROSSING EASTBOUND BUS US 20
REGION 2 / DISTRICT 2 STANDARD

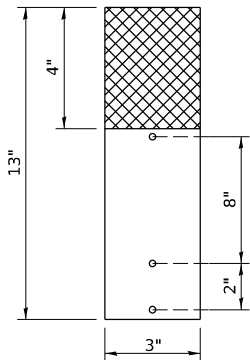
SCALE: N.A. SHEET 4 OF 4 SHEETS STA. TO STA.

F.A.P. RTE. 301	SECTION (1-1HB)BDR	COUNTY WINNEBAGO	TOTAL SHEETS 25	SHEET NO. 24
CONTRACT NO. 64U00				
ILLINOIS FED. AID PROJECT				

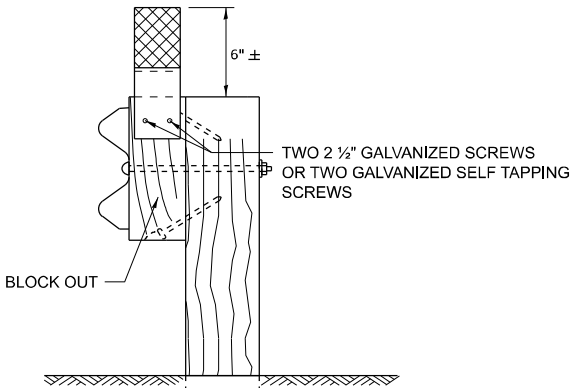
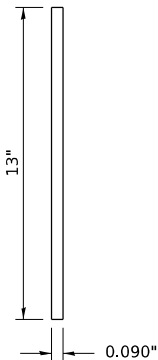
GUARDRAIL REFLECTORS, TYPE C (SPECIAL)

REFLECTORS FOR GUARDRAIL BLOCK OUT OR DELINEATOR POST

STRAIGHT
REFLECTOR / DELINEATOR



SIDE VIEW

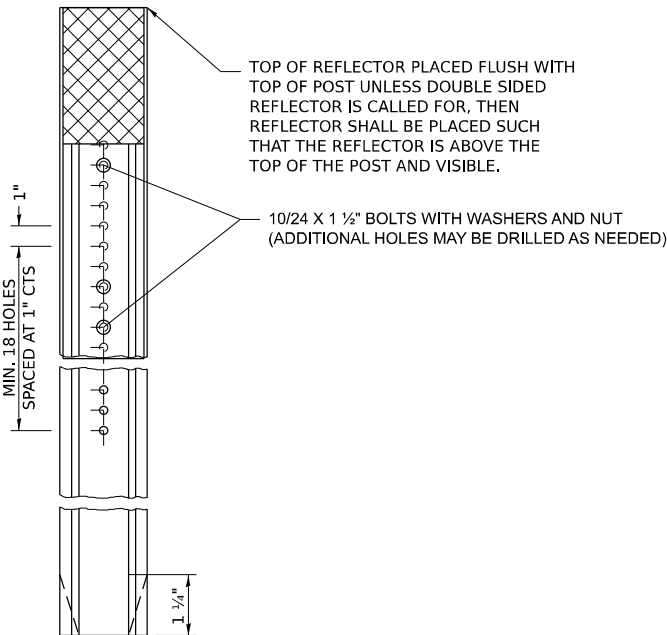


MOUNTED ON A GUARDRAIL BLOCK OUT

REFLECTORS SHALL BE MOUNTED DIRECTLY TO BLOCK OUTS.

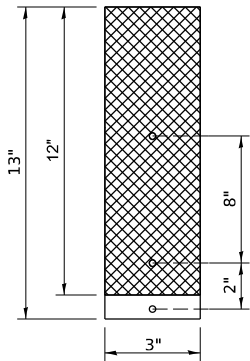
REFLECTORS MOUNTED ON WOODEN OR PLASTIC OR METAL BLOCK OUT SHALL BE MOUNTED USING TWO 2 1/2" GALVANIZED SCREWS WITH WASHERS OR TWO SELF TAPPING GALVANIZED SCREWS WITH WASHERS.

ADDITIONAL SHEETING MAY BE ADDED AS NEEDED FOR TURN AROUNDS AS SHOWN IN THE PLANS

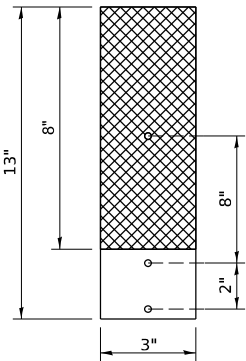


MOUNTED ON A DELINEATOR POST

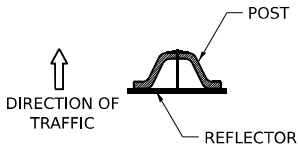
REPLACING
3 BUTTON
DELINEATOR



REPLACING
2 BUTTON
DELINEATOR



ADDITIONAL HOLES SHALL BE DRILLED IN THE REFLECTORS AS SHOWN ABOVE.



DELINEATORS SHALL BE INSTALLED ACCORDING TO STANDARD 635001 EXCEPT THAT THE POST SHALL BE ROTATED 180°. THE POST WILL HAVE THE WIDE SIDE FACING TRAFFIC AND THE REFLECTOR ATTACHECD AS SHOWN ABOVE.

NOTE:

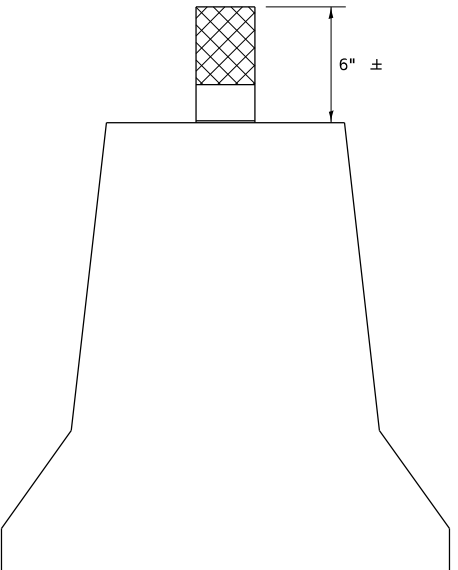
REFLECTORS SHALL BE PAID FOR AT THE CONTRACT UNIT PRICE PER EACH FOR GUARDRAIL REFLECTORS, TYPE C (SPECIAL), WHICH PRICE SHALL ALSO INCLUDE SCREWS, WASHERS OR AN APPROVED BONDING AGENT.

REFLECTORS INSTALLED ON TWO LANE ROADS SHALL BE DOUBLE SIDED AND BOTH SIDES SHALL BE CRYSTAL.

REFLECTORS INSTALLED ON CENTER BARRIER OR IN THE MEDIAN SHALL BE DOUBLE SIDED AND BOTH SIDES SHALL BE AMBER.

REFLECTORS INSTALLED ON DIVIDED HIGHWAYS ON THE OUTSIDE OF THE ROADWAY SHALL BE DOUBLE SIDED CRYSTAL.

SPACING FOR REFLECTORS SHALL BE ACCORDING TO STANDARD 782006 UNLESS OTHERWISE NOTED IN THE PLANS.



REFLECTORS MOUNTED ON BARRIER WALL

NOTE:

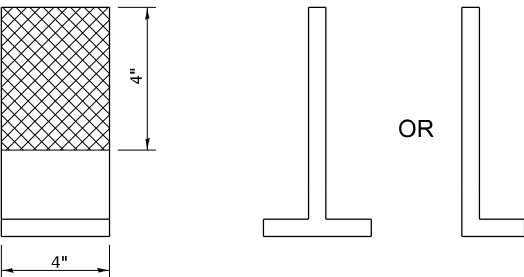
REFLECTORS SHALL BE PAID FOR AT THE CONTRACT UNIT PRICE PER EACH FOR GUARDRAIL REFLECTORS, TYPE C (SPECIAL), WHICH PRICE SHALL ALSO INCLUDE SCREWS, WASHERS OR AN APPROVED BONDING AGENT.

REFLECTORS INSTALLED ON TWO LANE ROADS SHALL BE DOUBLE SIDED AND BOTH SIDES SHALL BE CRYSTAL.

REFLECTORS INSTALLED ON CENTER BARRIER SHALL BE DOUBLE SIDE AND BOTH SIDES SHALL BE AMBER.

REFLECTORS INSTALLED ON DIVIDED HIGHWAYS ALONG THE OUSTIDE OF THE HIGHWAY SHALL BE DOUBLE SIDED CRYSTAL.

SPACING FOR REFLECTORS SHALL BE ACCORDING TO STANDARD 782006 UNLESS OTHERWISE NOTED IN THE PLANS.



SIDE VIEW

MODEL: Default
FILE NAME: L:\8008 KFF\F8008.001\PTB 206.023 Bridge Rehab (23903)\WO 11 -JUS20WB over US20BusEB\Chit\03 CAD\01 Model\D-2 Specific Standards\0294LU00-std 55.1-sht1.dgn

USER NAME = akobbah	DESIGNED - MGB	REVISED - 3-07-24
	DRAWN - MGB	REVISED - 4-27-23
	CHECKED - HJH	REVISED - 6-21-21
PLOT DATE = 2/3/2025	DATE -	REVISED -

STATE OF ILLINOIS
DEPARTMENT OF TRANSPORTATION

WESTBOUND US 20 CROSSING EASTBOUND BUS US 20
REGION 2 / DISTRICT 2 STANDARD

SCALE: N.A. SHEET 1 OF 1 SHEETS STA. TO STA.

F.A.P. RTE.	SECTION	COUNTY	TOTAL SHEETS	SHEET NO.
301	(1-1HB)BDR	WINNEBAGO	25	25
CONTRACT NO. 64U00				
ILLINOIS FED. AID PROJECT				