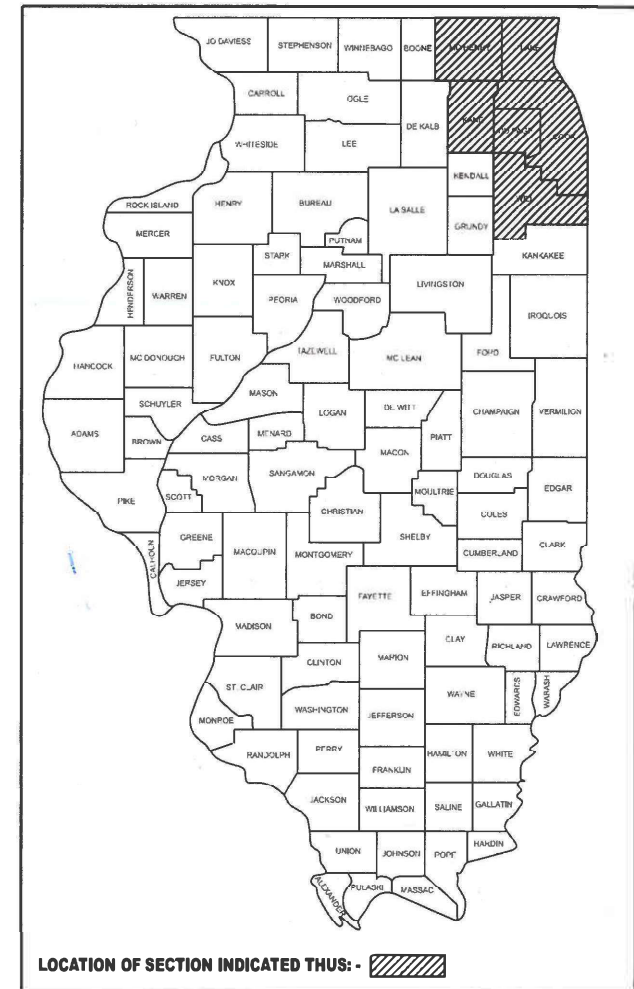


F.A. RTE.	SECTION	COUNTY	TOTAL SHEETS	SHEET NO.
VAR.	2025-1061-TS,MS	ILLINOIS	11	1
* 11 + 1 = 12 TOTAL SHEETS			CONTRACT NO. 62Y08	
			*DISTRICTWIDE	

D-91-113-25



LOCATION OF SECTION INDICATED THUS: - [hatched box]

STATE OF ILLINOIS  
DEPARTMENT OF TRANSPORTATION

PROPOSED  
HIGHWAY PLANS

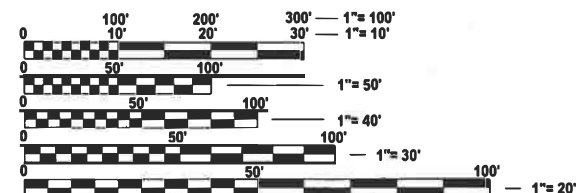
VARIOUS COUNTIES  
SECTION 2025-1061-TS,MS  
IMPACT ATTENUATORS, MCHD  
MISCELLANEOUS TRAFFIC CONTROL  
DISTRICTWIDE

C-91-175-25

LOCATION MAPS - SEE SHEETS

06-13-2025 LETTING ITEM 029

FOR INDEX OF SHEETS, SEE SHEET NO. 2



FULL SIZE PLANS HAVE BEEN PREPARED USING STANDARD  
ENGINEERING SCALES. REDUCED SIZED PLANS WILL NOT  
CONFORM TO STANDARD SCALES. IN MAKING MEASUREMENTS  
ON REDUCED PLANS, THE ABOVE SCALES MAY BE USED.

J.U.L.I.E.  
JOINT UTILITY LOCATION INFORMATION FOR EXCAVATION  
1-800-892-0123  
OR 811

PROJECT ENGINEER: ARAVIND GANDI (847) 705-4199  
PROJECT MANAGER: JACEK EJMONT (847) 705-4641

CONTRACT NO. 62Y08

STATE OF ILLINOIS  
DEPARTMENT OF TRANSPORTATION

SUBMITTED March 25 2025 Jacek Ejmont IR  
REGIONAL ENGINEER

May 9 2025 Scott A. Etkin  
ENGINEER OF DESIGN AND ENVIRONMENT

May 9 2025 Charles J. Harris  
DIRECTOR OF HIGHWAYS PROJECT IMPLEMENTATION

PRINTED BY THE AUTHORITY  
OF THE STATE OF ILLINOIS

REV-SEP

MODEL: GenNotesSh01 [Sheet]  
FILE NAME: c:\pwwork\pwwork\illinois.gov\1094230\111325-sh1-genote.dgn

INDEX OF SHEETS

STATE STANDARDS

GENERAL NOTES

SHEET NO.

DESCRIPTION

STANDARD NO.

DESCRIPTION

BEFORE STARTING ANY EXCAVATION, THE CONTRACTOR SHALL CALL "JULIE AT (800) 892-0123 OR 811 FOR FIELD LOCATIONS OF BURIED ELECTRIC, TELEPHONE AND GAS FACILITIES, (48 HOURS NOTIFICATION IS REQUIRED). THE CONTRACTOR SHALL COORDINATE CONSTRUCTION ACTIVITIES WITH UTILITY COMPANIES, VILLAGE OF TINLEY PARK AND COOK COUNTY.

THE CONTRACTOR SHALL CONTACT THE DISTRICT TRAFFIC CONTROL SUPERVISOR AT KALPANA.KANNAN-HOSADURGA@ILLINOIS.GOV A MINIMUM OF 72 HOURS IN ADVANCE OF BEGINNING WORK.

1	COVERSHEET	442201 - 03	CLASS C AND D PATCHES
2	INDEX OF SHEETS, STANDARDS, AND GENERAL NOTES	643001 - 03	SAND MODULE IMPACT ATTENUATORS
3 - 4	SUMMARY OF QUANTITIES	701006 - 05	OFF ROAD OPERATIONS, 2L, 2W, 15 FT TO 24" FROM EDGE OF PAVEMENT
5 - 7	EXPRESSWAY LOCATION MAPS	701011 - 04	OFF ROAD MOVING OPERATIONS, 2L, 2W, DAY ONLY
8	ETNRANCE RAMP AND CLOSURE DETAILS (TC-8)	701101 - 05	OFF ROAD OPERATIONS MULTILANE 15 FT TO 24" FROM EDGE OF PAVEMENT
9	SINGLE LANE WEAVE (MODIFIED) (TC-9)	701106 - 02	OFF ROAD OPERATIONS MULTILANE MORE THAN 15 FT AWAY
9A	TRAFFIC CONTROL AND PROTECTION FOR SIDE ROADS, INTERSECTIONS, AND DRIVEWAYS (TC-10)	701301 - 04	LANE CLOSURE, 2L, 2W SHORT TIME OPERATIONS
10	TRAFFIC CONTROL AND PROTECTION AND TURN BAYS (TC-14)	701421 - 08	LANE CLOSURE MULTILANE DAY ONLY OPERATIONS FOR SPEE ≥ 45 MPH TO 55 MPH
11	TRAFFIC CONTROL FOR SHOULDER CLOSURES AND PARTIAL RAMP CLOSURES (MODIFIED) (TC-17)	701426 - 09	LANE CLOSURE MULTILANE INTERMITTENT OR MOVING OPERATION FOR SPEED ≥ 45 MPH
		701427 - 05	LANE CLOSURE, MULTILANE, INTERMITTENT OR MOVING OPERATIONS < 40 MPH
		701501 - 06	URBAN LANE CLOSURE 2L, 2W UNDIVIDED
		701502 - 09	URBAN LANE CLOSURE 2L, 2W WITH BIDIRECTIONAL LEFT TURN LANE
		701601 - 09	URBAN LANE CLOSURE MULTILANE 1W OR 2W WITH NONTRAVERSABLE MEDIAN
		701602 - 10	URBAN LANE CLOSURE MULTILANE 2W WITH BIDIRECTIONAL LEFT TURN LANE
		701606 - 10	URBAN SINGLE LANE CLOSURE MULTILANE 2W WITH MOUNTABLE MEDIAN
		701701 - 10	UBRAN LANE CLOSURE MULTILANE INTERSECTION
		701801 - 06	SIDEWALK, CORNER OR CORSSWALK CLOSURE
		701400 - 11	APPROACH TO LANE CLOSURE, FREEWAY / EXPRESSWAY
		701401 - 13	LANE CLOSURE, FREEWAY / EXPRESSWAY
		701411 - 09	LANE CLOURE, MULTILANE, AT ENTRANCE OR EXIT RAMP, FOR SPEEDS > 45 MPH
		701428 - 01	TRAFFIC CONTROL SETUP AND REMOVAL FREEWAY / EXPRESSWAY
		701446 - 11	TWO LANE CLOSURE, FREEWAY / EXPRESSWAY
		701901 - 10	TRAFFIC CONTROL DEVICES

	USER NAME = jacek.ejmont	DESIGNED -	REVISED -	STATE OF ILLINOIS DEPARTMENT OF TRANSPORTATION	INDEX OF SHEETS, STANDARDS, AND GENERAL NOTES			F.A. RTE.	SECTION	COUNTY	TOTAL SHEETS	SHEET NO.
		DRAWN -	REVISED -					VAR.	2025-1061-TS,MS	*	11	2
	PLOT SCALE = 0.16666633'' / in.	CHECKED -	REVISED -					CONTRACT NO. 62Y08				
	PLOT DATE = 5/9/2025	DATE -	REVISED -		SCALE:	SHEET	OF 1 SHEETS	STA.	TO STA.	ILLINOIS   FED. AID PROJECT		

MODEL: SQQ [Sheet]  
FILE NAME: c:\pw\_work\pwid\illinois.gov\arvind.gandhi\illinois.gov\1064230\111325-shr-SQQ.dgn

SUMMARY OF QUANTITIES			URBAN TOTAL QUANTITIES	CONSTRUCTION TYPE CODE						SUMMARY OF QUANTITIES			URBAN TOTAL QUANTITIES	CONSTRUCTION TYPE CODE						
CODE NO	ITEM	UNIT		100% STATE 0044	100% MCHD 0044					CODE NO	ITEM	UNIT		100% STATE 0044	100% MCHD 0044					
50102400	CONCRETE REMOVAL	CU YD	41	33	8					70100205	TRAFFIC CONTROL AND PROTECTION,	EACH	65	55	10					
											STANDARD 701401									
50300225	CONCRETE STRUCTURES	CU YD	25	20	5															
										70100420	TRAFFIC CONTROL AND PROTECTION,	EACH	20	17	3					
64300240	IMPACT ATTENUATORS (FULLY	EACH	7	5	2						STANDARD 701411									
	REDIRECTIVE, NARROW), TEST LEVEL 2																			
										70100430	TRAFFIC CONTROL AND PROTECTION,	EACH	18	15	3					
64300260	IMPACT ATTENUATORS (FULLY	EACH	2	2							STANDARD 701446									
	REDIRECTIVE, NARROW), TEST LEVEL 3																			
										70102621	TRAFFIC CONTROL AND PROTECTION,	EACH	1	1						
64300370	IMPACT ATTENUATORS (FULLY	EACH	1	1							STANDARD 701501									
	REDIRECTIVE, WIDE), TEST LEVEL 3																			
										70102624	TRAFFIC CONTROL AND PROTECTION,	EACH	1	1						
64300770	IMPACT ATTENUATORS (SEVERE USE,	EACH	26	21	5						STANDARD 701502									
	NARROW), TEST LEVEL 3																			
										70102626	TRAFFIC CONTROL AND PROTECTION,	EACH	2	2						
64300920	IMPACT ATTENUATORS (SEVERE USE,	EACH	1	1							STANDARD 701606									
	WIDE), TEST LEVEL 3																			
										70102631	TRAFFIC CONTROL AND PROTECTION,	EACH	10	9	1					
X6432223	REPAIR IMPACT ATTENUATORS (FULLY	EACH	2	1	1						STANDARD 701601									
	REDIRECTIVE, NARROW), TEST LEVEL 3																			
										70102633	TRAFFIC CONTROL AND PROTECTION,	EACH	13	10	3					
X6432213	REPAIR IMPACT ATTENUATORS (FULLY	EACH	2	1	1						STANDARD 701602									
	REDIRECTIVE, WIDE), TEST LEVEL 3																			
										70102637	TRAFFIC CONTROL AND PROTECTION,	EACH	1	1						
X6432233	REPAIR IMPACT ATTENUATORS (SEVERE	EACH	15	13	2						STANDARD 701701									
	USE, NARROW) TEST LEVEL 3																			
										70102642	TRAFFIC CONTROL AND PROTECTION,	EACH	1	1						
64301090	ATTENUATOR BASE	SQ YD	15	13	2						STANDARD 701801									
										X6430120	REMOVE IMPACT ATTENUATORS, NO SALVAGE	EACH	55	46	9					
			USER NAME = aravind.gandhi		DESIGNED -		REVISED -		STATE OF ILLINOIS DEPARTMENT OF TRANSPORTATION			SUMMARY OF QUANTITIES			F.A RTE.	SECTION		COUNTY	TOTAL SHEETS	SHEET NO.
					DRAWN -		REVISED -								VAR.	2025-1061-TS.MS		*	11	3
					CHECKED -		REVISED -										CONTRACT NO. 62Y08			
			PLOT DATE = 3/15/2025		DATE -		REVISED -					SCALE:		SHEET 1	OF 2	SHEETS	STA.	TO STA.		ILLINOIS   FED. AID PROJECT

\*DISTRICTWIDE

[illegible]

MODEL: North01 [Sheet]  
FILE NAME: c:\p\work\louis\illinois.gov\1094230\011325-shr-details.dgn



USER NAME	= aravind.gandi	DESIGNED	-	REVISED	-
DRAWN	-	REVIS	-	REVISED	-
PLOT SCALE	= \$\$SCALE\$	CHECKED	-	REVISED	-
PLOT DATE	= 3/15/2025	DATE	-	REVISED	-

STATE OF ILLINOIS  
DEPARTMENT OF TRANSPORTATION

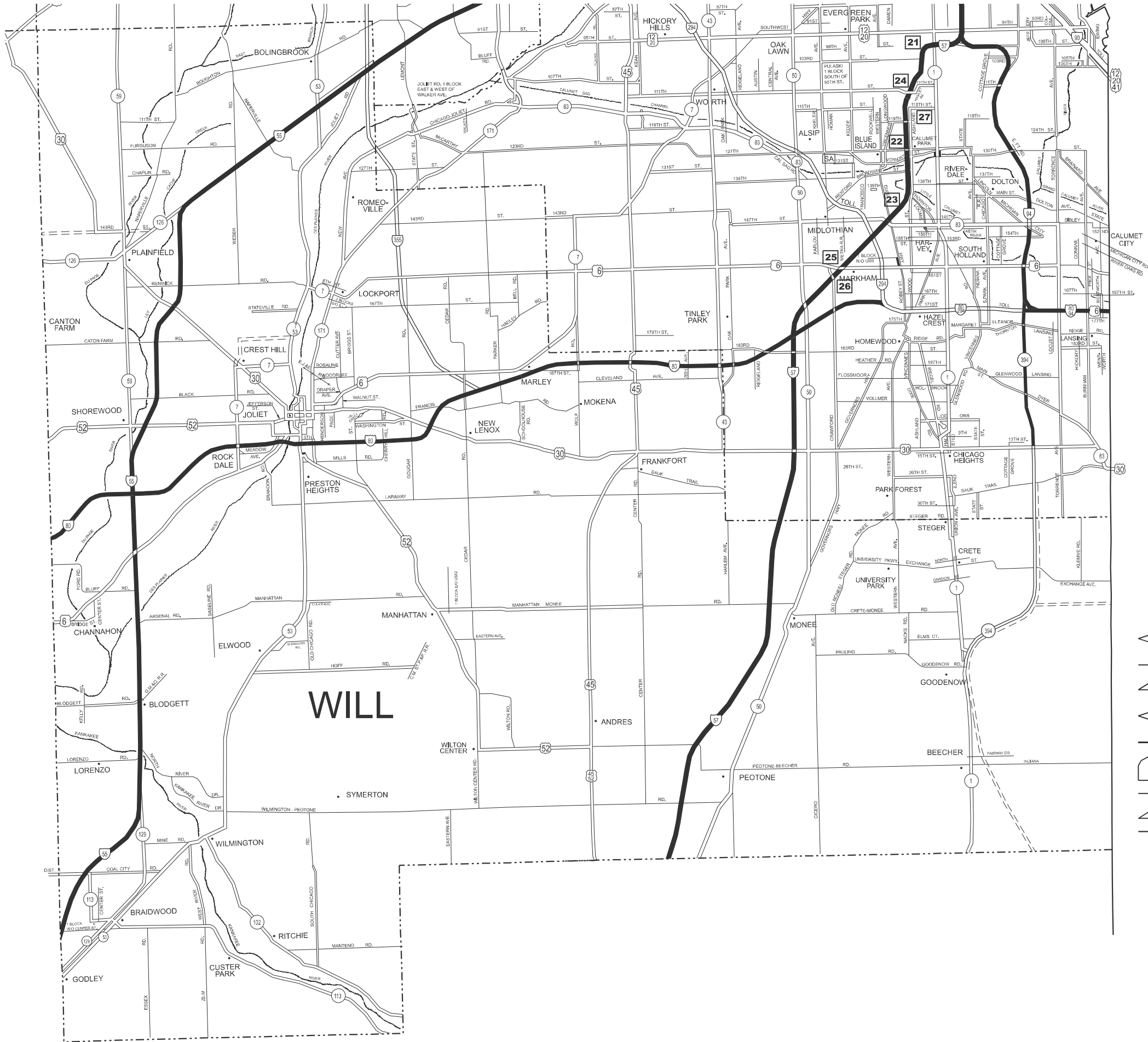
EXPRESSWAY LOCATION MAP

SCALE: SHEET 1 OF 3 SHEETS STA. TO STA.

F.A. RTE.	SECTION	COUNTY	TOTAL SHEETS	SHEET NO.
VAR.	2025-1061-TS,MS	*	11	5
CONTRACT NO. 62Y08				
ILLINOIS FED. AID PROJECT				

\*DISTRICTWIDE

MODEL: South03 (Sheet)  
FILE NAME: c:\p\work\will\illinois.gov\1094230\011325-sh-06a1s.dgn



- DISTRICT NO. 1**
- STATE HIGHWAYS & EXPRESSWAYS  
WITHIN STATE JURISDICTION  
(EXCEPT TOLLWAYS)
  - STATE HIGHWAYS & EXPRESSWAYS  
TO BE CLEANED
  - FUTURE HIGHWAYS
  - VARIOUS AGENCIES HIGHWAYS



INDIANA

USER NAME = aravind.gandi	DESIGNED -	REVISED -
PLOT SCALE = \$SCALE\$	DRAWN -	REVISED -
PLOT DATE = 3/15/2025	CHECKED -	REVISED -
	DATE -	REVISED -

STATE OF ILLINOIS  
DEPARTMENT OF TRANSPORTATION

EXPRESSWAY LOCATION MAP

SCALE: SHEET OF 3 SHEETS STA. TO STA.

F.A. RTE.	SECTION	COUNTY	TOTAL SHEETS	SHEET NO.
VAR.	2025-1061-TS,MS	*	11	6
CONTRACT NO. 62Y08				
ILLINOIS FED. AID PROJECT				

\*DISTRICTWIDE

DISTRICT NO. 1

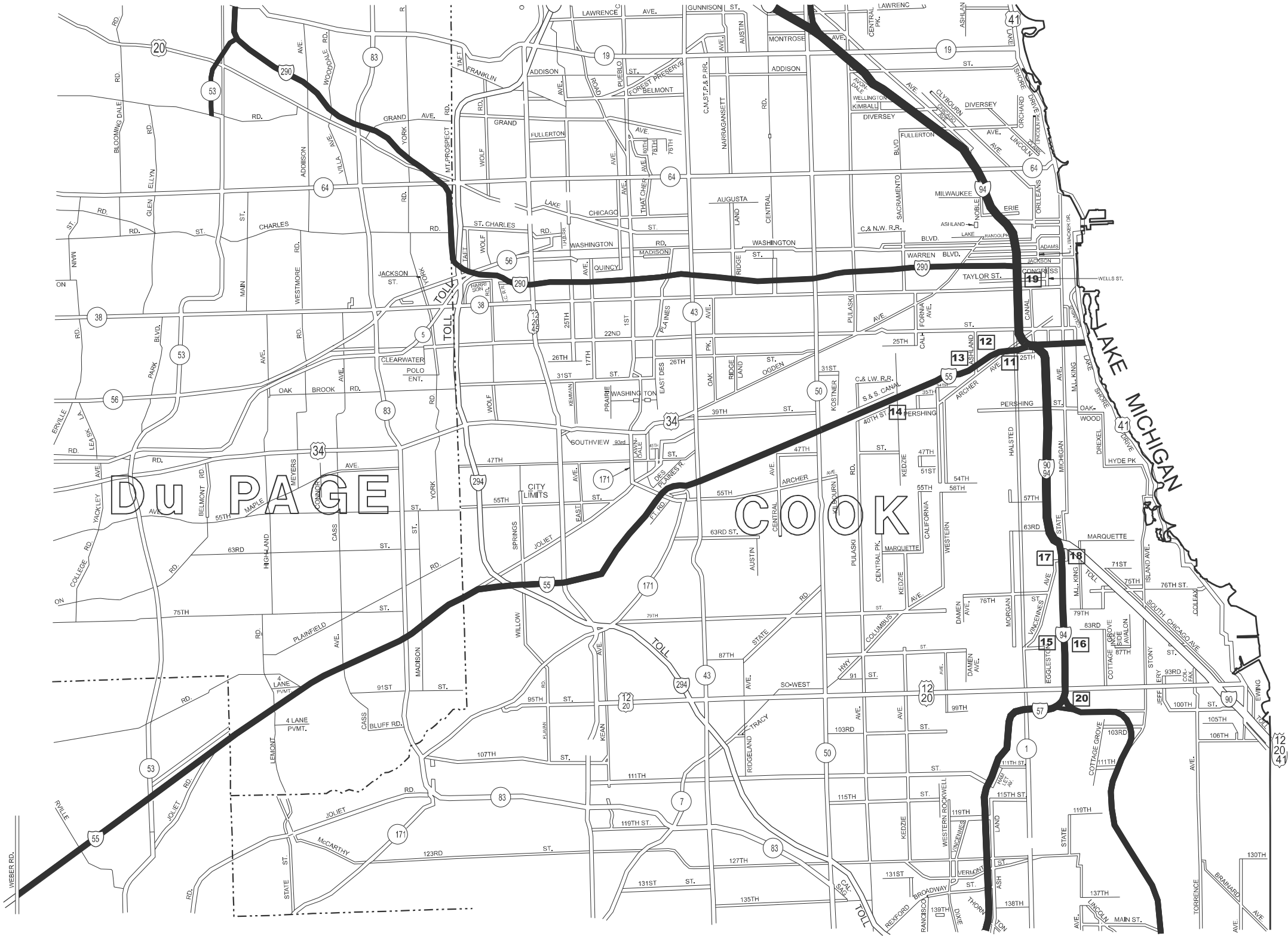
STATE HIGHWAYS & EXPRESSWAYS  
WITHIN STATE JURISDICTION  
(EXCEPT TOLLWAYS)

STATE HIGHWAYS & EXPRESSWAYS  
TO BE CLEANED

FUTURE HIGHWAYS

VARIOUS AGENCIES HIGHWAYS

N



MODEL: Misdie02 [Sheet]  
FILE NAME: c:\pw\_work\pvt\illinois.gov\1094230\011325-sh-01a1.dgn

USER NAME	= aravind.gandi	DESIGNED	-	REVISED	-
		DRAWN	-	REVISED	-
PLOT SCALE	= \$\$SCALE\$	CHECKED	-	REVISED	-
PLOT DATE	= 3/15/2025	DATE	-	REVISED	-

STATE OF ILLINOIS  
DEPARTMENT OF TRANSPORTATION

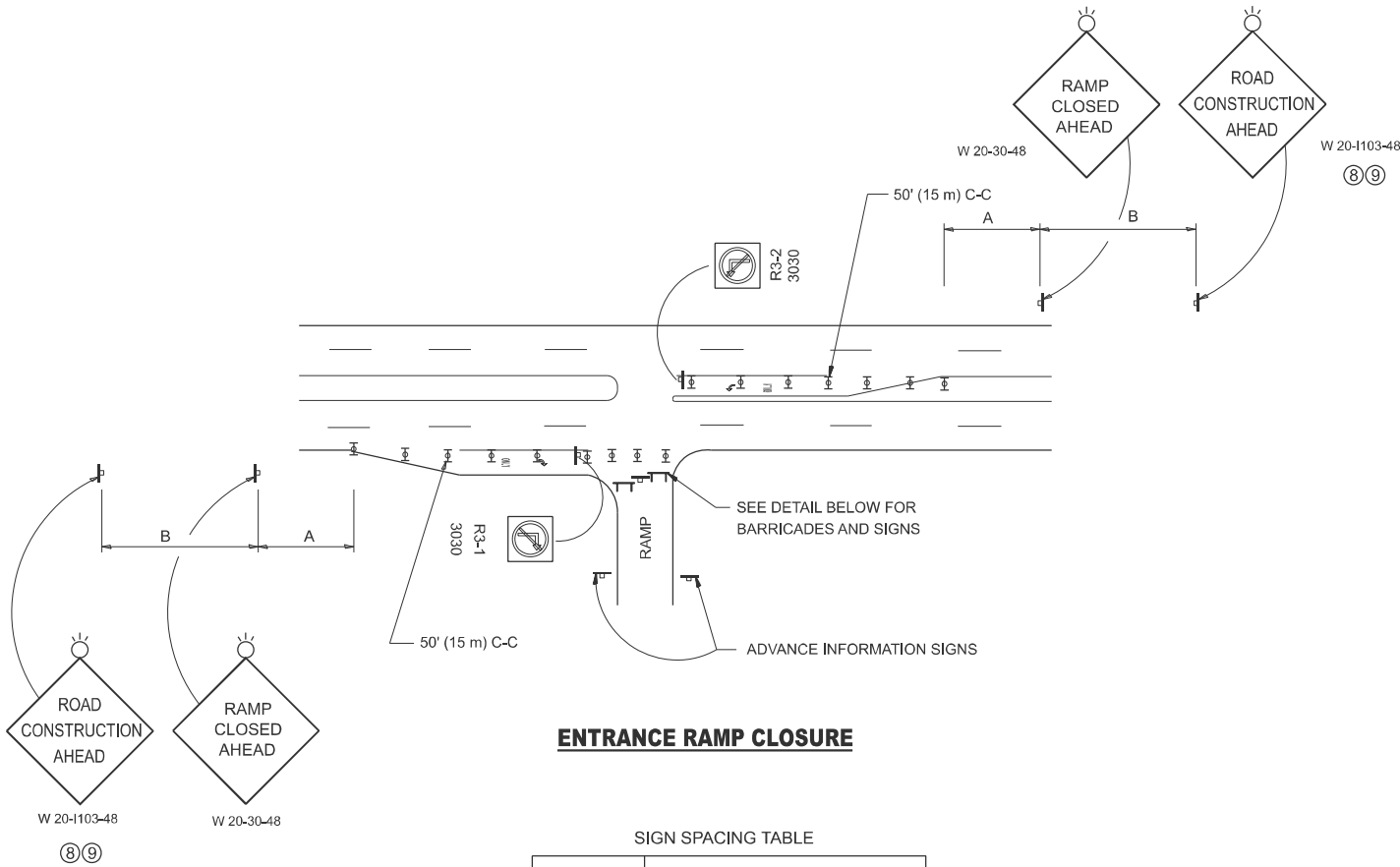
EXPRESSWAY LOCATION MAP

SCALE: SHEET 2 OF 3 SHEETS STA. TO STA.

F.A. RTE.	SECTION	COUNTY	TOTAL SHEETS	SHEET NO.
VAR.	2025-1061-TS,MS	*	11	7
CONTRACT NO. 62Y08				
ILLINOIS FED. AID PROJECT				

\*DISTRICTWIDE

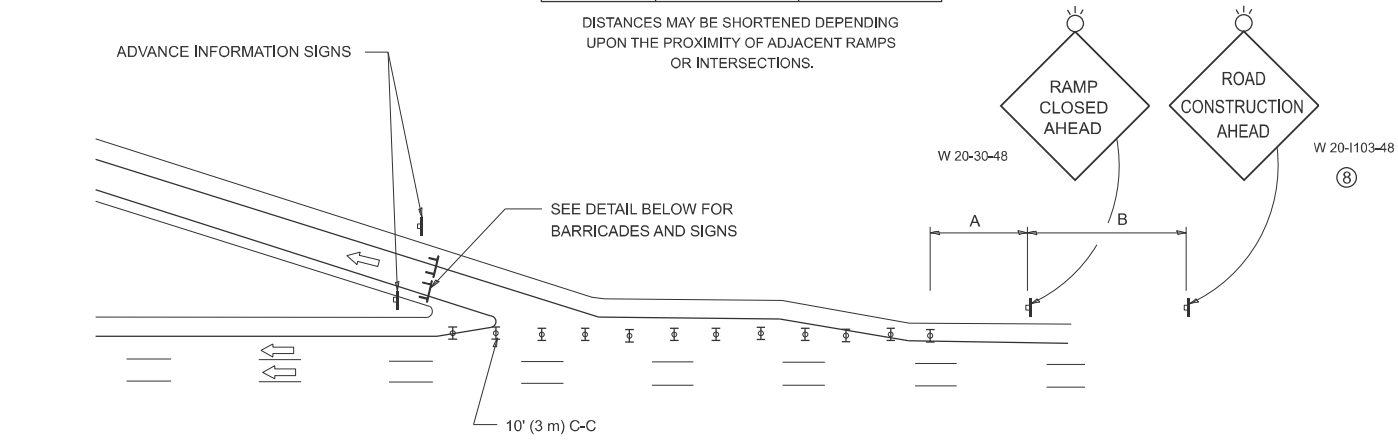
MODEL: TC-08 (Sheet)  
FILE NAME: c:\pawork\work\illinois.gov\jacek.ejmont\1094230\DD111325-shi-DiaSids.dgn



**ENTRANCE RAMP CLOSURE**

FACILITY	SIGN SPACING TABLE	
	A	B
EXPRESSWAY >24 HOURS	1000' (300 m)	1500' (450 m)
EXPRESSWAY ≤24 HOURS	500' (150 m)	500' (150 m)
ARTERIAL 55 MPH	500' (150 m)	500' (150 m)
ARTERIAL 50-45 MPH	350' (100 m)	350' (100 m)
ARTERIAL <45 MPH	200' (60 m)	200' (60 m)

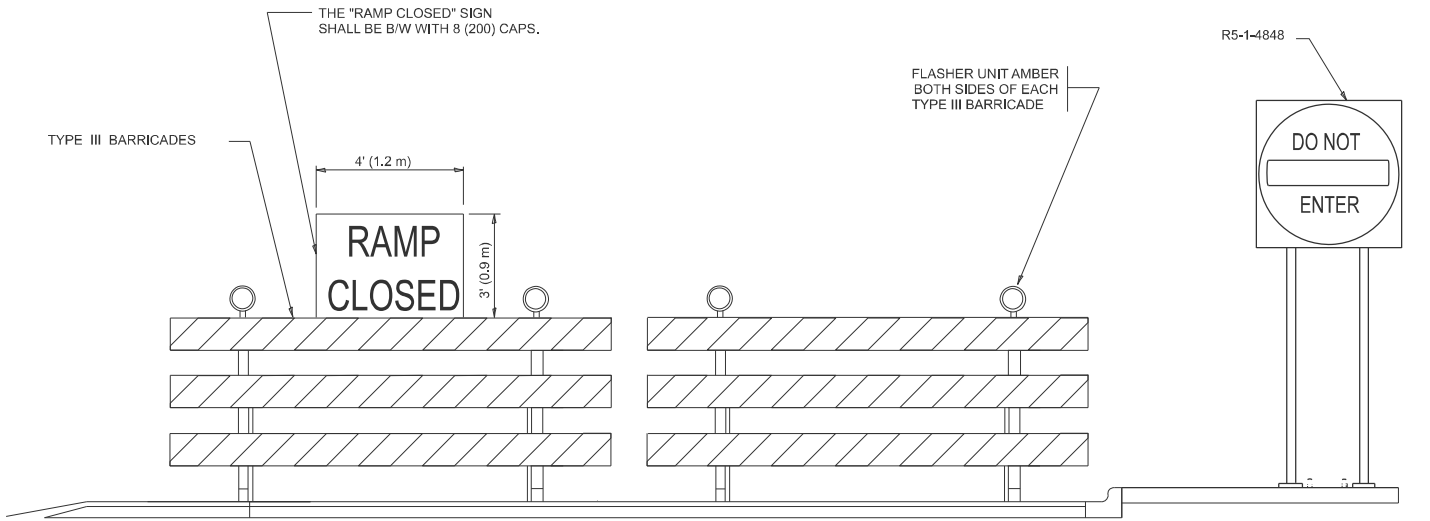
DISTANCES MAY BE SHORTENED DEPENDING UPON THE PROXIMITY OF ADJACENT RAMPS OR INTERSECTIONS.



**EXIT RAMP CLOSURE**

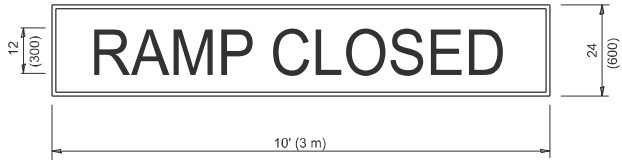
**SYMBOLS**

- TYPE II BARRICADE OR DRUM
- TYPE III BARRICADE WITH 2 FLASHING LIGHTS



**DETAIL FOR REQUIRED BARRICADES & SIGNS**

**RAMP CLOSURE ADVANCE WARNING SIGN**



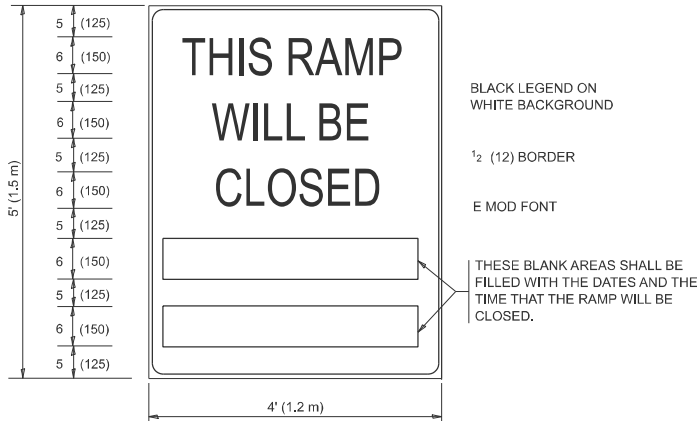
BLACK LEGEND ON ORANGE BACKGROUND MOUNTED DIAGONALLY  
E MOD FONT  
1 (25) BORDER

THESE SIGNS ARE REQUIRED ON ALL THE EXIT GUIDE SIGNS FOR EXIT RAMPS THAT WILL BE CLOSED FOR MORE THAN FOUR (4) CONSECUTIVE DAYS.

THESE SIGNS ARE REQUIRED ON BOTH SIDES OF THE RAMP, MINIMUM OF 1 WEEK IN ADVANCE OF THE CLOSURE.

THESE SIGNS SHALL BE FABRICATED AND PAID FOR ACCORDING TO THE TEMPORARY INFORMATION SIGNING SPECIAL PROVISION

**RAMP CLOSURE ADVANCE INFORMATION SIGN**



BLACK LEGEND ON WHITE BACKGROUND

1/2 (12) BORDER

E MOD FONT

THESE BLANK AREAS SHALL BE FILLED WITH THE DATES AND THE TIME THAT THE RAMP WILL BE CLOSED.

**GENERAL NOTES:**

- CONES MAY BE SUBSTITUTED FOR DRUMS OR TYPE II BARRICADES DURING DAY OPERATIONS. CONES SHALL BE A MINIMUM OF 28 (700) HIGH.
- VERTICAL BARRICADES SHALL NOT BE USED FOR RAMP CLOSURES.
- A FLAGGER SHALL BE POSITIONED AT EACH CLOSED RAMP THAT IS OPEN TO CONSTRUCTION VEHICLES, PRECEDED BY A W20-7 FLAGGER WARNING SIGN.
- ALL ROUTE MARKERS AND TRAILBLAZER ASSEMBLIES WHICH DIRECT MOTORISTS TO A CLOSED ENTRANCE RAMP SHALL BE COVERED WHEN THE RAMP IS CLOSED FOR MORE THAN FOUR (4) DAYS.
- THE SIGNING AND BARRICADING WHICH IS REQUIRED BY THIS DETAIL SHALL BE INCLUDED IN THE COST OF TRAFFIC CONTROL AND PROTECTION (EXPRESSWAYS).
- AUTHORIZATION FROM THE DISTRICT'S BUREAU OF TRAFFIC IS REQUIRED FOR ALL RAMP CLOSURES.
- THE RAMP CLOSURE ADVANCE INFORMATION SIGNS SHALL BE ERECTED IF THE CLOSURE TIME EXCEEDS TWENTY-FOUR (24) HOURS. ADDITIONAL ADVANCE WARNING SIGNS ON EXIT GUIDE SIGNING WILL BE REQUIRED FOR EXIT RAMP CLOSURES THAT EXCEED FOUR (4) DAYS IN LENGTH.
- ROAD CONSTRUCTION AHEAD SIGNS MAY BE OMITTED WHEN THIS DETAIL IS USED IN CONJUNCTION WITH OTHER TRAFFIC CONTROL THAT ALREADY INCLUDES A ROAD CONSTRUCTION AHEAD SIGN.
- ARTERIAL ROAD CONSTRUCTION AHEAD SIGNS SHALL BE INSTALLED ON THE LEFT SIDE OF TRAFFIC IF THE MEDIAN IS MORE THAN 10 FT WIDE.

ALL DIMENSIONS ARE IN INCHES (MILLIMETERS) UNLESS OTHERWISE SHOWN.

USER NAME = jacek.ejmont	DESIGNED - D.W.S.	REVISED - S.P.B._12-09
	DRAWN -	REVISED - M.D._06-13
PLOT SCALE = \$SCALE\$	CHECKED -	REVISED - M.D._01-18
PLOT DATE = 3/15/2025	DATE - 02-83	REVISED - D.S._05-24

**STATE OF ILLINOIS  
DEPARTMENT OF TRANSPORTATION**

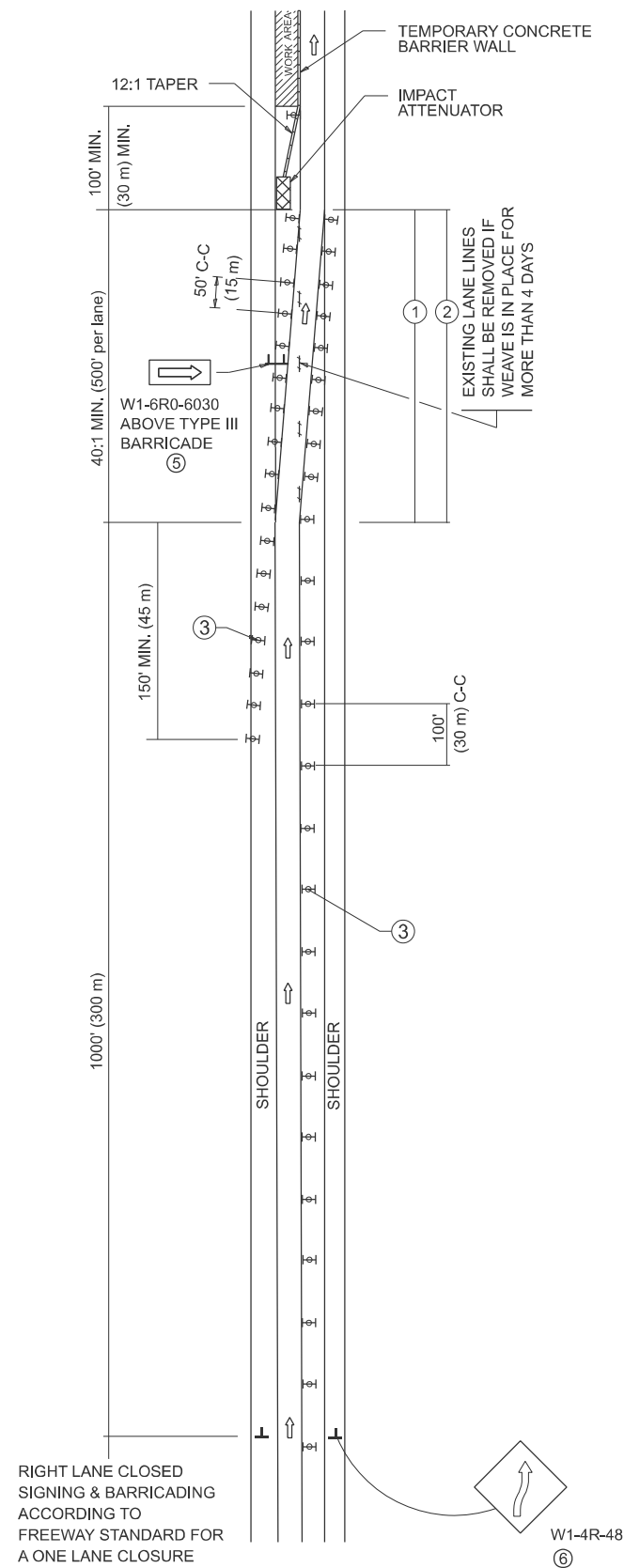
**ENTRANCE AND EXIT\_RAMP  
CLOSURE DETAILS**

SCALE: NONE SHEET 1 OF 1 SHEETS STA. TO STA.

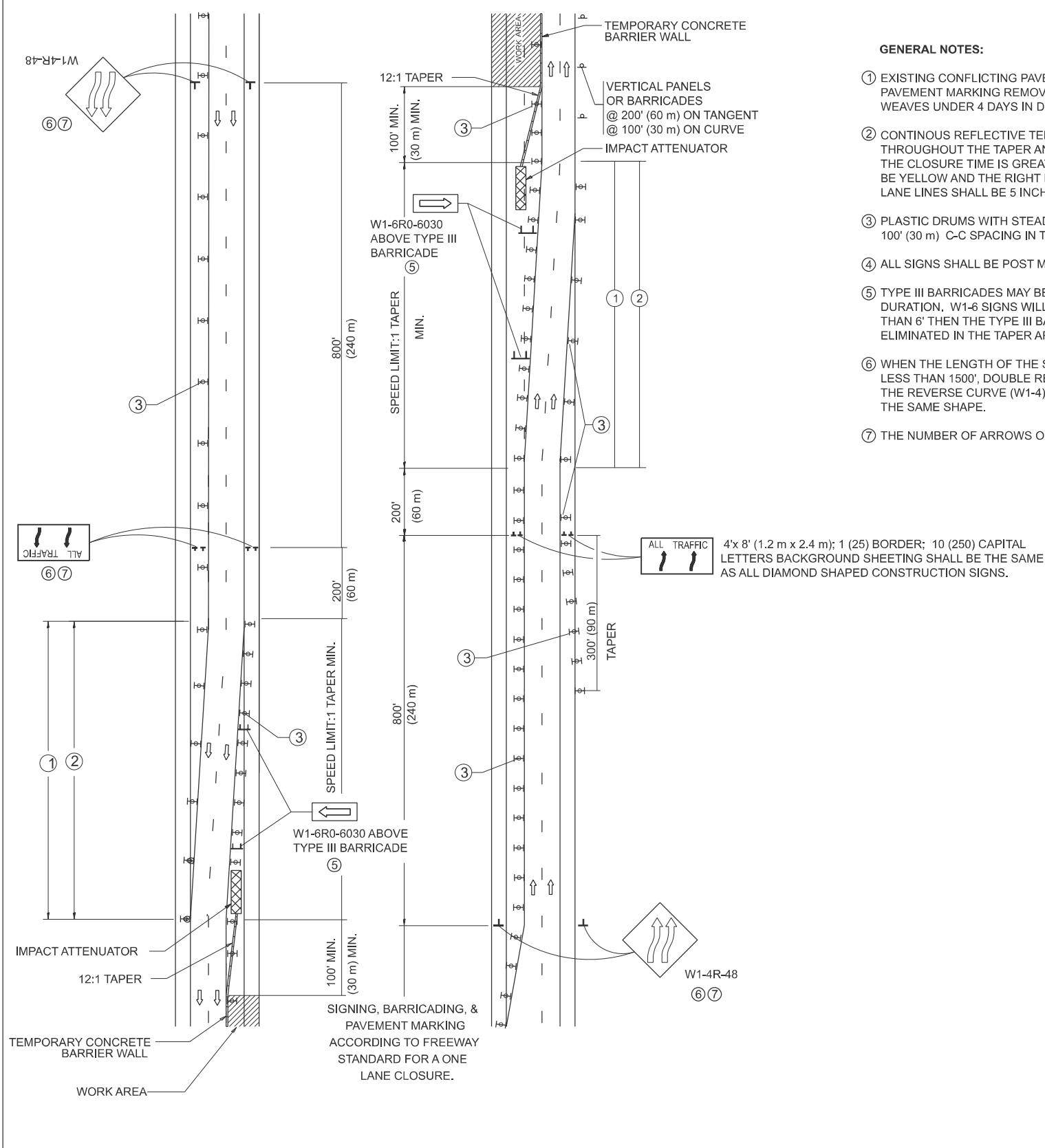
F.A. RTE.	SECTION	COUNTY	TOTAL SHEETS	SHEET NO.
VAR.	2025-1061-TS,MS	*	11	8
TC-08		CONTRACT NO. 62Y08		
ILLINOIS		FED. AID PROJECT		

\*DISTRICTWIDE

## SINGLE LANE WEAVE











## MULTI-LANE WEAVE



**GENERAL NOTES:**

- ① EXISTING CONFLICTING PAVEMENT MARKING LINES SHALL BE REMOVED. PAVEMENT MARKING REMOVAL SHALL NOT BE REQUIRED FOR SINGLE LANE WEAVES UNDER 4 DAYS IN DURATION.
- ② CONTINUOUS REFLECTIVE TEMPORARY PAVEMENT MARKING TAPE SHALL BE PLACED THROUGHOUT THE TAPER AND FOR 300' (90 m) ALONG SIDE THE WORK AREA WHERE THE CLOSURE TIME IS GREATER THAN FOURTEEN DAYS. THE LEFT EDGE LINE SHALL BE YELLOW AND THE RIGHT EDGE LINE SHALL BE WHITE. FOR MULTI-LANE WEAVES LANE LINES SHALL BE 5 INCH, 10'-30' (3 m-9 m) SKIP DASH, WHITE.
- ③ PLASTIC DRUMS WITH STEADY BURN LIGHTS AT 50' (15 m) C-C SPACING IN TAPERS AND 100' (30 m) C-C SPACING IN TANGENTS.
- ④ ALL SIGNS SHALL BE POST MOUNTED IF THE CLOSURE TIME EXCEEDS FOUR DAYS.
- ⑤ TYPE III BARRICADES MAY BE OMITTED FOR SINGLE-LANE WEAVES UNDER 24-HOURS IN DURATION. W1-6 SIGNS WILL STILL BE REQUIRED. IF THE WIDTH OF OFFSET IS LESS THAN 6' THEN THE TYPE III BARRICADE WITH ATTACHED ARROW SIGN PANEL CAN BE ELIMINATED IN THE TAPER AREAS.
- ⑥ WHEN THE LENGTH OF THE SHIFTED SEGMENT (DISTANCE BETWEEN WEAVE POINTS) IS LESS THAN 1500', DOUBLE REVERSE CURVE SIGNS (W24-1) SHOULD BE USED INSTEAD OF THE REVERSE CURVE (W1-4) SIGNS. ARROWS ON THE 4'X8' "ALL TRAFFIC" SIGNS SHALL BE THE SAME SHAPE.
- ⑦ THE NUMBER OF ARROWS ON THESE SIGNS SHALL MATCH THE NUMBER OF LANES OPEN TO TRAFFIC.

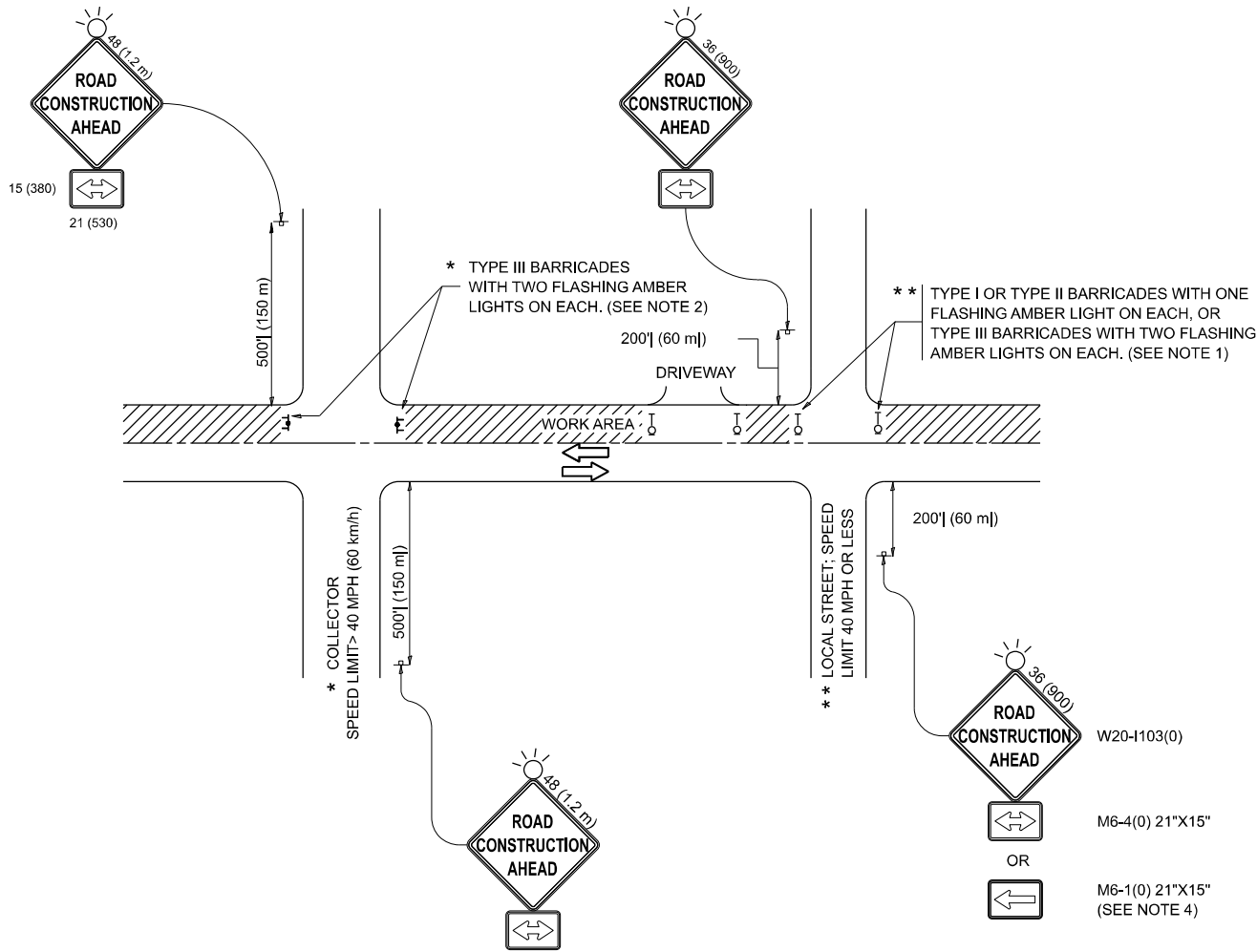
## SYMBOLS

- |   |  |
|---|--|
|  | DIRECTION OF TRAFFIC   |
|  | WORK AREA  |
|  | SIGN ON PORTABLE OR PERMANENT SUPPORT                                |
|  | TYPE II BARRICADE OR DRUM WITH MONO-DIRECTIONAL STEADY BURNING LIGHT |
|  | TEMPORARY CONCRETE BARRIER WALL                                      |
|  | IMPACT ATTENUATOR  |
|  | W24-1-48   |
|  |  |

ALL DIMENSIONS ARE IN INCHES (MILLIMETERS)  
UNLESS OTHERWISE SHOWN

MODEL: TC-9 [Sheet]  
FILE NAME: c:\pw\_work\pwidotillinois.gov\_jacek.ejmont@illinois.gov\d1094230\D111325-sh1-DistStd.dgn

MODEL: TC-10 (Sheet)  
FILE NAME: c:\p\work\pwork\illinois.gov\jacek.ejmont@illinois.gov\d1094230\D111325-sh1-Dls\Std.dgn



NOTES:

- SIDE ROAD WITH A SPEED LIMIT OF 40 MPH (60 km/h) OR LESS AS SHOWN ON THE DRAWING AND AS DIRECTED BY THE ENGINEER:
  - ONE "ROAD CONSTRUCTION AHEAD" SIGN 36 x 36 (900x900) WITH A FLASHER MOUNTED ON IT APPROXIMATELY 200' (60 m) IN ADVANCE OF THE MAIN ROUTE.
  - THE CLOSED PORTION OF THE MAIN ROUTE SHALL BE PROTECTED BY BLOCKING WITH TYPE I, TYPE II OR TYPE III BARRICADES, 1/3 OF THE CROSS SECTION OF THE CLOSED PORTION.
- SIDE ROAD WITH A SPEED LIMIT GREATER THAN 40 MPH (60 km/h) AS SHOWN ON THE DRAWING AND AS DIRECTED BY THE ENGINEER:
  - ONE "ROAD CONSTRUCTION AHEAD" SIGN 48 x 48 (1.2 m x 1.2 m) WITH A FLASHER MOUNTED ON IT APPROXIMATELY 500' (150 m) IN ADVANCE OF THE MAIN ROUTE.
  - THE CLOSED PORTION OF THE MAIN ROUTE SHALL BE PROTECTED BY BLOCKING WITH TYPE III BARRICADES, 1/2 OF THE CROSS SECTION OF THE CLOSED PORTION.
- CONES MAY BE SUBSTITUTED FOR BARRICADES OR DRUMS AT HALF THE SPACING DURING DAY OPERATIONS. CONES SHALL BE A MINIMUM OF 28 (710) IN HEIGHT.
- WHEN THE SIDE ROAD LIES BETWEEN THE BEGINNING OF THE MAINLINE SIGNING AND THE WORK ZONE, A SINGLE HEADED ARROW (M6-1) SHALL BE USED IN LIEU OF THE DOUBLE HEADED ARROW (M6-4).
- WHEN WORK IS BEING PERFORMED ON A SIDE ROAD OR DRIVEWAY, FOLLOW THE APPLICABLE STANDARD(S). THE DIRECTIONAL ARROW (M6-1 OR M6-4) SHALL BE COVERED OR REMOVED WHEN NO LONGER CONSISTENT WITH THE TRAFFIC CONTROL SET-UP.
- ADVANCE WARNING SIGNS ARE TO BE OMITTED ON DRIVEWAYS UNLESS OTHERWISE SPECIFIED IN THE PLANS OR BY THE ENGINEER.
- THE TRAFFIC CONTROL AND PROTECTION FOR SIDE ROADS, INTERSECTIONS, AND DRIVEWAYS SHALL BE INCLUDED IN THE COST OF SPECIFIED TRAFFIC CONTROL STANDARDS OR ITEMS.

All dimensions are in inches (millimeters)  
unless otherwise shown.

	USER NAME = jacek.ejmont	DESIGNED - L.H.A.	REVISED - T. RAMMACHER 01-06-00	STATE OF ILLINOIS DEPARTMENT OF TRANSPORTATION	TRAFFIC CONTROL AND PROTECTION FOR SIDE ROADS, INTERSECTIONS, AND DRIVEWAYS					F.A. RTE.	SECTION	COUNTY	TOTAL SHEETS	SHEET NO.
		DRAWN -	REVISED - A. SCHUETZE 07-01-13							VAR.	2025-1061-TS,MS	*	11	9A
		CHECKED -	REVISED - A. SCHUETZE 09-15-06							TC-10				
	PLOT DATE = 5/9/2025	DATE - 06-89	REVISED - D. SENDERAK 05-03-24		SCALE:					SHEET	OF	SHEETS	STA.	TO STA.
							ILLINOIS   FED. AID PROJECT							

TURN BAY ENTRANCE AT START  
OF LANE CLOSURE TAPER

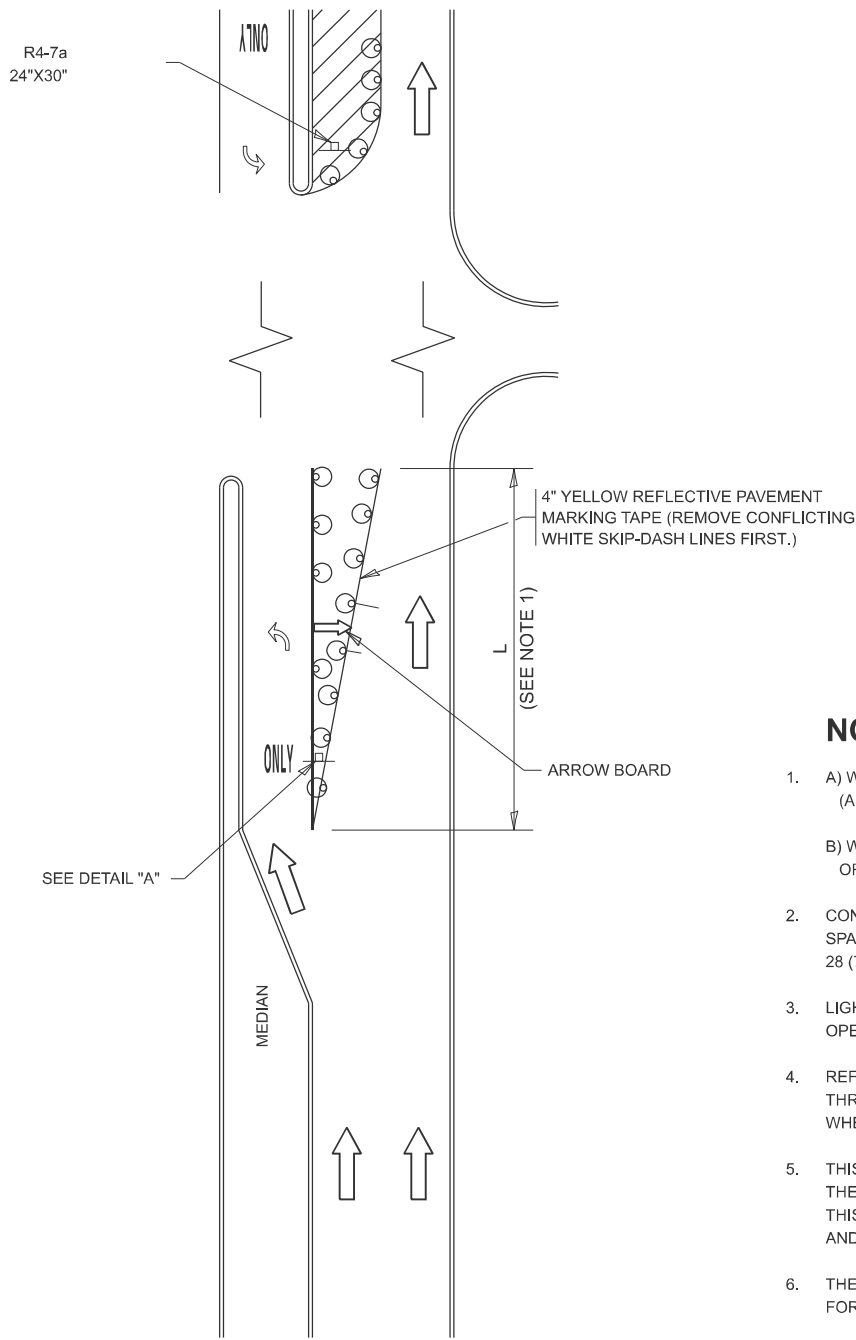


FIGURE 1

LEGEND

- WORK AREA
- LANE OPEN TO TRAFFIC
- ARROW BOARD
- TYPE I OR II BARRICADE OR DRUM WITH STEADY BURN LIGHT
- DRUM WITH STEADY BURN LIGHT
- SIGN ASSEMBLY
- TYPE I OR II CHECK BARRICADE WITH FLASHING LIGHT

NOTES:

- A) WHEN "L" IS  $\leq$  THE STORAGE LENGTH OF THE TURN LANE (AS SHOWN IN FIG. 1), USE FIGURE 1.  
B) WHEN "L" IS  $>$  THE STORAGE LENGTH OF THE TURN LANE OR THE TURN LANE IS WITHIN THE LANE CLOSURE, USE FIGURE 2.
- CONES MAY BE SUBSTITUTED FOR BARRICADES OR DRUMS AT HALF THE SPACING DURING DAY OPERATIONS. CONES SHALL BE A MINIMUM OF 28 (710) IN HEIGHT.
- LIGHTS WILL NOT BE REQUIRED ON BARRICADES OR DRUMS FOR DAY OPERATIONS. ALL LIGHTS SHALL BE MONODIRECTIONAL.
- REFLECTIVE TEMPORARY PAVEMENT MARKINGS SHALL BE PLACED THROUGHOUT THE BARRICADED AREAS OF EACH TURN BAY AS SHOWN WHERE THE CLOSURE TIME IS GREATER THAN FOURTEEN (14) DAYS.
- THIS APPLICATION ALSO APPLIES WHEN WORK IS BEING PERFORMED IN THE RIGHT LANE(S) AND THE RIGHT TURN BAY IS TO REMAIN OPEN. UNDER THIS CONDITION, "RIGHT TURN LANE" R3-I100R 24 x 24 (600 x 600) AND M6-2R 21 x 15 (530 x 380) SHALL BE USED.
- THESE CONTROLS SHALL SUPPLEMENT MAINLINE TRAFFIC CONTROL FOR LANE CLOSURES.
- THE SIGNS SHALL BE MOUNTED ABOVE THE BARRICADES/DRUMS ON SEPARATE SIGN SUPPORTS THAT MEET NCHRP 350 OR MASH REQUIREMENTS.
- TRAFFIC CONTROL AND PROTECTION AT TURN BAYS (TO REMAIN OPEN TO TRAFFIC) SHALL BE INCLUDED IN THE COST OF SPECIFIED TRAFFIC CONTROL STANDARDS OR ITEMS.

TURN BAY ENTRANCE  
WITHIN A LANE CLOSURE

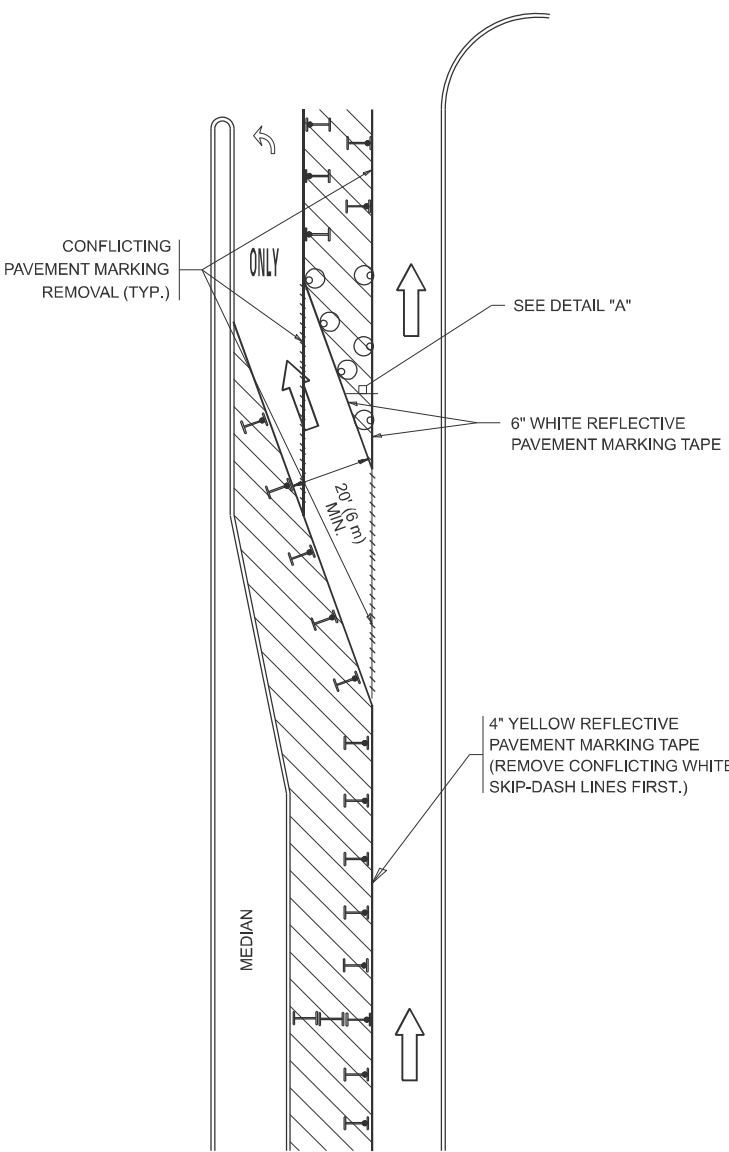
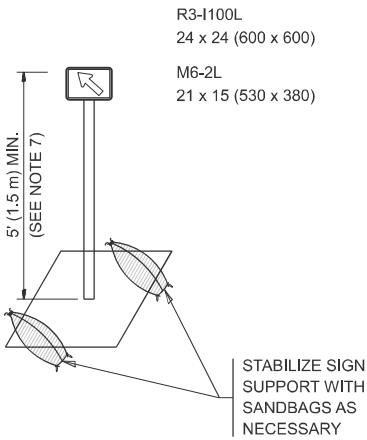


FIGURE 2



DETAIL A

All dimensions are in inches (millimeters) unless otherwise shown.

MODEL: TC-14 (Sheet)  
FILE NAME: c:\p\work\pwt\illinois.gov\jacob.ejmont\1094230\111325-shi-DiaSids.dgn

USER NAME = jacob.ejmont	DESIGNED - T. RAMMACHER 09-08-94	REVISED - R. BORO 09-14-09
	DRAWN - A. HOUSEH 11-07-95	REVISED - A. SCHUETZE 07-01-13
PLOT SCALE = \$SCALE\$	CHECKED - A. HOUSEH 10-12-96	REVISED - A. SCHUETZE 09-15-16
PLOT DATE = 3/15/2025	DATE - T. RAMMACHER 01-06-00	REVISED -

STATE OF ILLINOIS  
DEPARTMENT OF TRANSPORTATION

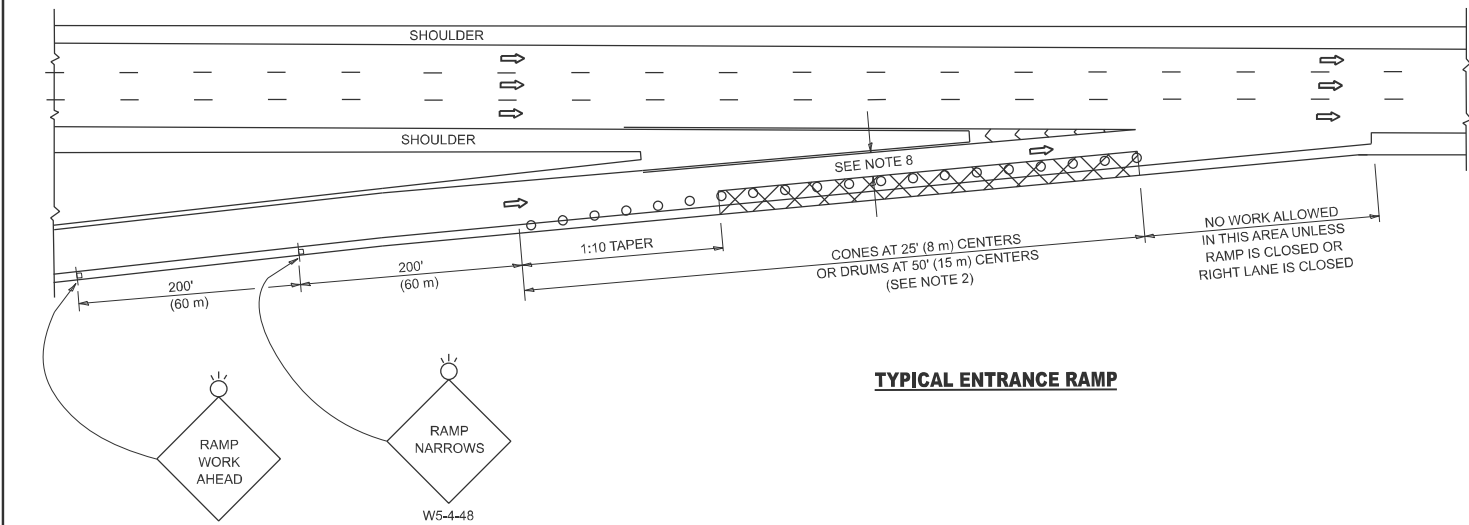
TRAFFIC CONTROL AND PROTECTION AT TURN BAYS  
(TO REMAIN OPEN TO TRAFFIC)

SCALE: NONE SHEET 1 OF 1 SHEETS STA. TO STA.

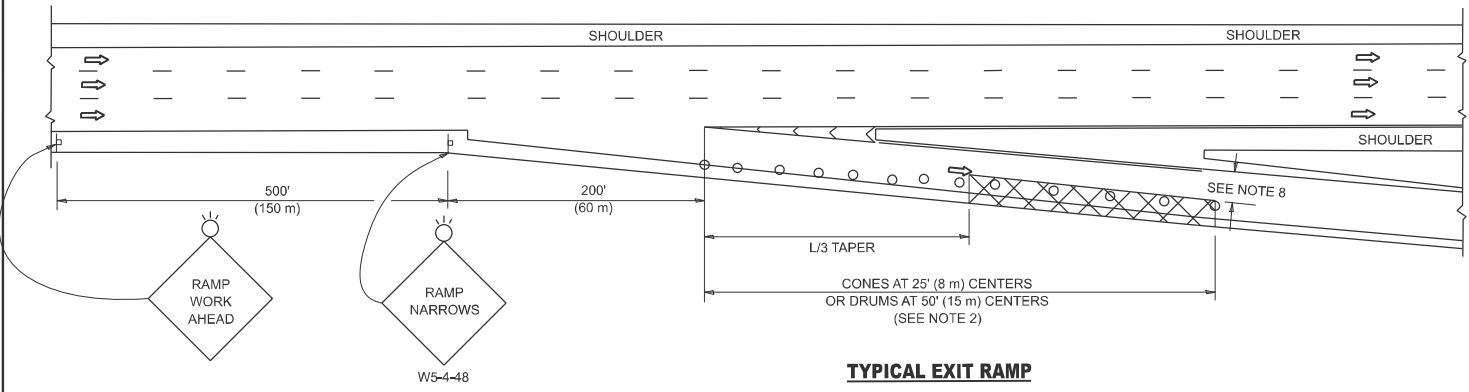
F.A. RTE.	SECTION	COUNTY	TOTAL SHEETS	SHEET NO.
VAR.	2025-1061-TS,MS	*	11	10
TC-14		CONTRACT NO. 62Y08		
ILLINOIS		FED. AID PROJECT		

\*DISTRICTWIDE

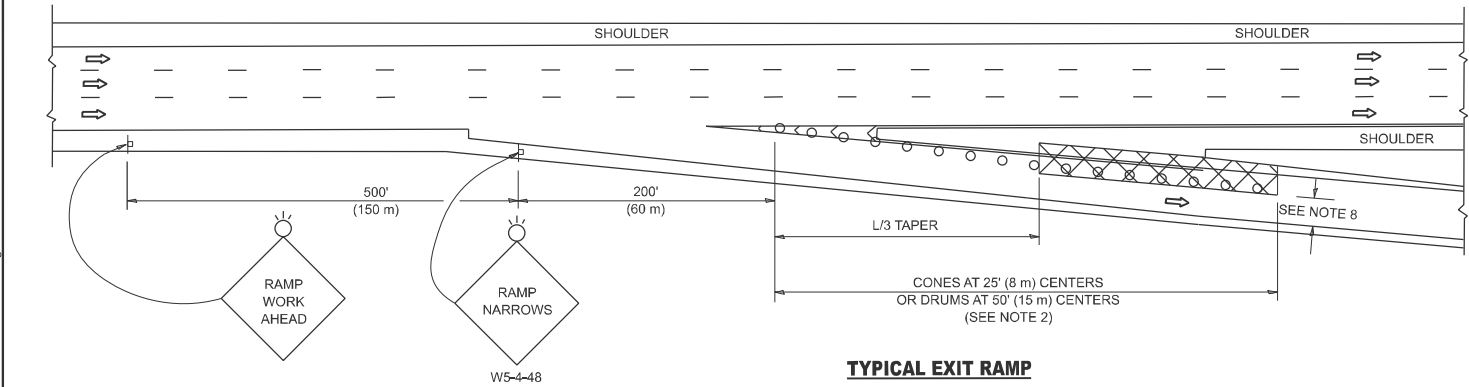
PARTIAL RAMP CLOSURE DETAILS



TYPICAL ENTRANCE RAMP



TYPICAL EXIT RAMP



TYPICAL EXIT RAMP

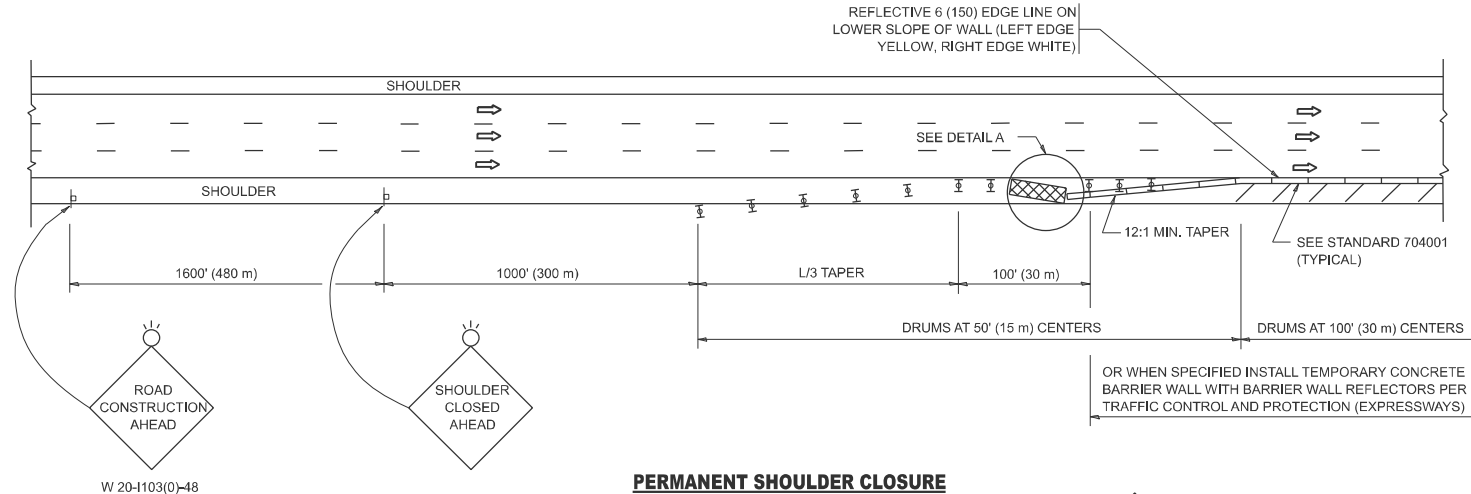
SYMBOLS

- ACTIVE WORK AREA
- SIGN ON PORTABLE OR PERMANENT SUPPORT
- FLAGGER WITH CONTROL SIGN
- TYPE II BARRICADE OR DRUM
- CONE, DRUM OR BARRICADE
- IMPACT ATTENUATOR OF TYPE AND TEST LEVEL SPECIFIED

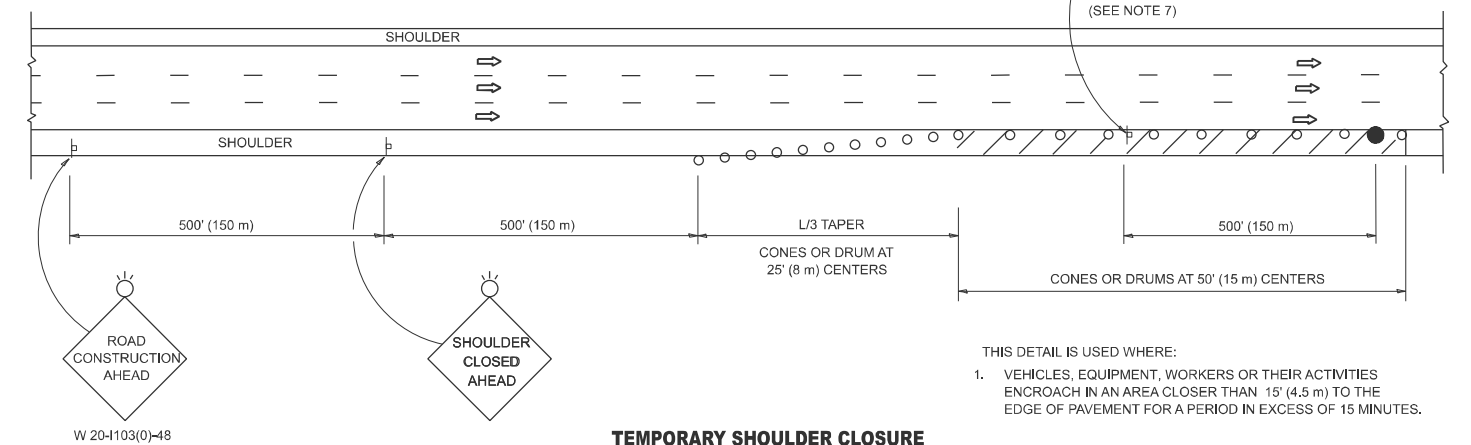
GENERAL NOTES:

- THE "L" DISTANCE EQUALS:  
SPEED LIMIT FORMULAS  
45 mph (80 km/h) METRIC ENGLISH  
OR GREATER: L=0.65(W)(S) L=(W)(S)  
W = WIDTH OF OFFSET IN FEET (METERS)  
S = NORMAL POSTED SPEED MPH (KM/H)
- TYPE II BARRICADES OR DRUMS ARE REQUIRED FOR ALL NIGHTTIME CLOSURES. TYPE II BARRICADES OR DRUMS WITH MONODIRECTIONAL STEADY BURN LIGHTS ARE REQUIRED FOR DELINEATING OBSTACLES, EXCAVATIONS, OR HAZARDS EXCEEDING 100 FT (30m) IN LENGTH AT NIGHT.
- ALL SIGNS SHALL BE POST MOUNTED IF THE CLOSURE TIME EXCEEDS FOUR DAYS.
- FLASHING LIGHTS SHALL BE USED DURING THE HOURS OF DARKNESS AND SHALL BE INSTALLED ABOVE THE FIRST TWO SETS OF SIGNS.

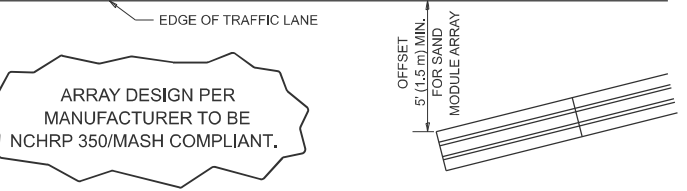
SHOULDER CLOSURE DETAILS



PERMANENT SHOULDER CLOSURE



TEMPORARY SHOULDER CLOSURE



DETAIL "A"  
IMPACT ATTENUATOR, TEMPORARY  
(SEE NOTE 5)

- THE IMPACT ATTENUATOR, TEMPORARY IS NOT REQUIRED WHEN THE TEMPORARY CONCRETE BARRIER WALL IS PROTECTED BY OR IS TIED INTO THE EXISTING GUARDRAIL. IF OFFSET IS LESS THAN 5 FEET USE NARROW USE TYPE DEVICE TO MEET NCHRP350/MASH.
- AUTHORIZATION FROM THE DISTRICT'S BUREAU OF TRAFFIC IS REQUIRED FOR ALL FREEWAY CLOSURES.
- THE FLAGGER AND FLAGGER SIGN ARE REQUIRED AT THE ABOVE WORK SITES WHEN:  
a. FOUR OR MORE WORK VEHICLES ENTER THE TRAFFIC LANES IN A ONE HOUR PERIOD.  
b. THE WORK ACTIVITY REQUIRES FREQUENT ENCROACHMENT INTO THE LANE OPEN TO TRAFFIC.  
THE FLAGGER SHALL BE STATIONED APPROXIMATELY 100' (30 m) TO 200' (60 m) IN ADVANCE OF THE WORKERS.
- 12' MIN. WIDTH TANGENT SECTION  
16' MIN. WIDTH CURVE SECTION.
- TEMPORARY SHOULDER AND NON-SYSTEM INTERCHANGE PARTIAL RAMP CLOSURES ARE ALLOWED WEEKDAYS BETWEEN 9:00 A.M. AND 3:00 P.M. AND BETWEEN 7:00 P.M. AND 5:00 A.M. OR AS APPROVED BY THE EXPRESSWAY TRAFFIC OPERATIONS ENGINEER. PERMANENT SHOULDER AND PARTIAL RAMP CLOSURES WILL ONLY BE PERMITTED IF CALLED FOR IN THE PLANS OR AS APPROVED BY THE EXPRESSWAY OPERATIONS ENGINEER.

ALL DIMENSIONS ARE IN INCHES (MILLIMETERS) UNLESS OTHERWISE SHOWN.

MODEL: TC-17 [Sheet]  
FILE NAME: c:\p\work\illinois\gov\jacob.ejmont\1094230\111325-sh-DisStds.dgn

	USER NAME   = jacek.ejmont		DESIGNED   -	REVISED   -   M.D. 06-13	STATE OF ILLINOIS DEPARTMENT OF TRANSPORTATION	TRAFFIC CONTROL DETAILS FOR FREEWAY SHOULDER CLOSURES AND PARTIAL RAMP CLOSURES			F.A. RTE.	SECTION	COUNTY	TOTAL SHEETS	SHEET NO.
	DRAWN       -   D.W.S.		REVISED   -	M.D. 01-18					VAR.	2025-1061-TS,MS	*	11	11
	PLOT SCALE   = \$SCALE\$		CHECKED   -	REVISED   -   M.D. 10-20					TC-17		CONTRACT NO. 62Y08		
	PLOT DATE    = 3/15/2025		DATE       -   11-96	REVISED   -   D.S. 05-24					ILLINOIS   FED. AID PROJECT				
					SCALE: NONE	SHEET   1	OF   1	SHEETS	STA.	TO STA.			

\*DISTRICTWIDE