

## TRAFFIC DATA:

INTERSTATE 190  
2023 ADT - 57,200  
2043 ADT - 69,100

DES PLAINES RIVER ROAD  
2022 ADT - 21,000  
2042 ADT - 25,400

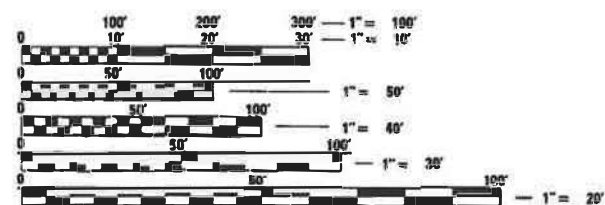
POSTED SPEED:  
INTERSTATE 190 - 45 MPH  
RIVER ROAD - 35 MPH

STATE OF ILLINOIS  
DEPARTMENT OF TRANSPORTATION

# PROPOSED HIGHWAY PLANS

FAI ROUTE 190: I-190 (KENNEDY EXPRESSWAY)  
OVER DES PLAINES RIVER ROAD  
SN 016-0511 (EB) & SN 016-0512 (WB) BRIDGE  
REPAIRS  
SECTION (1293-BR) BR 25  
COOK COUNTY  
C-91-171-25

PROJECT LOCATED IN:  
VILLAGE OF ROSEMONT  
COOK COUNTY



FULL SIZE PLANS HAVE BEEN PREPARED USING STANDARD  
ENGINEERING SCALES. REDUCED SIZED PLANS WILL NOT  
CONFORM TO STANDARD SCALES. IN MAKING MEASUREMENTS  
ON REDUCED PLANS, THE ABOVE SCALES MAY BE USED.

J.U.L.E.  
JOINT UTILITY LOCATION INFORMATION FOR EXCAVATION  
1-800-892-0123  
OR 811

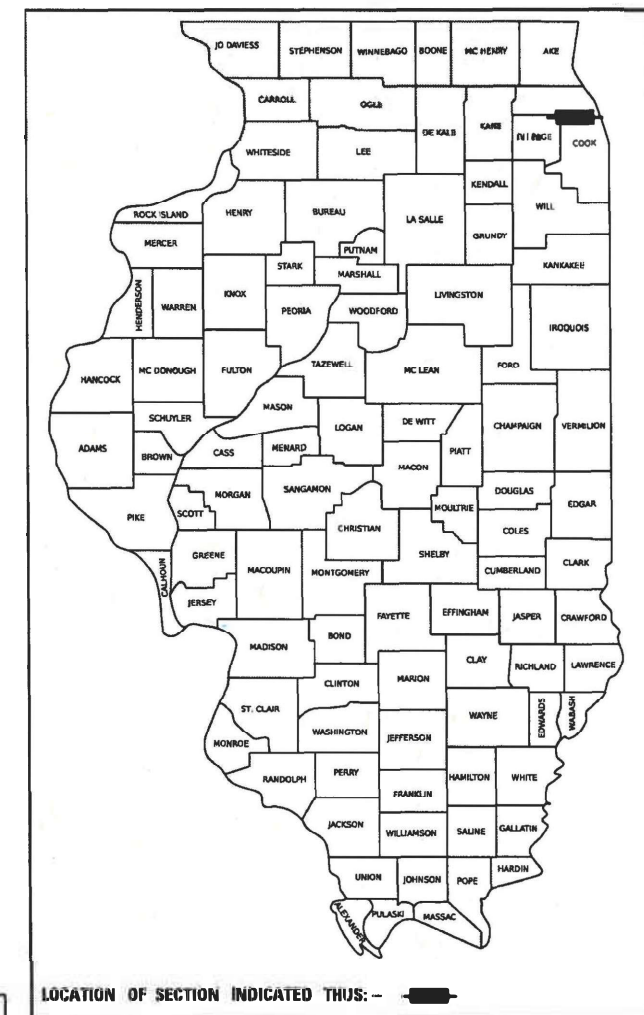
PROJECT ENGINEER: RODRIGO LEDEZMA, P.E. (847) 705-4580  
IDOT PROJECT MANAGER: JEAN ALAIN MIDY, P.E. (847) 221-3056

CONTRACT NO. 62Y04

GROSS LENGTH = 349 FT. = 0.07 MILE  
NET LENGTH = 349 FT. = 0.07 MILE

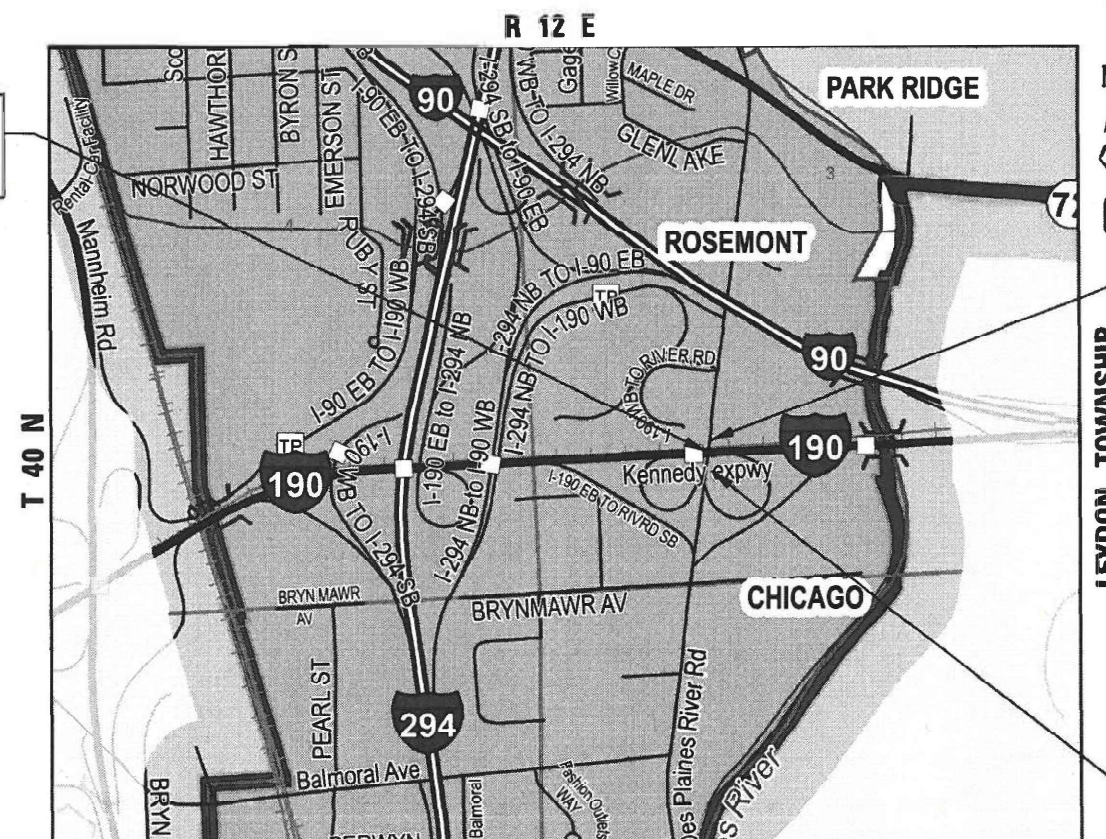
F.A.I. RTE.	SECTION	COUNTY	TOTAL SHEETS	SHEET NO.
190	(1293-BR) BR 25	COOK	24	1
		ILLINOIS	CONTRACT NO. 62Y04	

D-91-109-25



LOCATION OF SECTION INDICATED THUS: —

INTERSTATE 190  
OVER RIVER ROAD  
ST. NO. 016-0511 (EB)  
ST. NO. 016-0512 (WB)



R 12 E

T 40 N

N

LEYDON TOWNSHIP

PROJECT LIMIT BEGINS  
RIVER ROAD  
STA. 18 + 83



PROJECT LIMIT ENDS  
RIVER ROAD  
STA. 22 + 32

STATE OF ILLINOIS  
DEPARTMENT OF TRANSPORTATION

SUBMITTED March 18 2025  
James R.

REGIONAL ENGINEER

May 9 2025

ENGINEER OF DESIGN AND ENVIRONMENT

May 9 2025

DIRECTOR OF HIGHWAYS PROJECT IMPLEMENTATION

PRINTED BY THE AUTHORITY  
OF THE STATE OF ILLINOIS

DISTRICT 1

REV-SEP



INDEX OF SHEETS

SHEET	DESCRIPTION
1	COVER SHEET
2	INDEX OF SHEETS, HIGHWAY STANDARDS, GENERAL NOTES, AND COMMITMENTS
3 - 6	SUMMARY OF QUANTITIES
7	TYPICAL SECTIONS
8	PROPOSED ROADWAY AND REMOVAL PLAN
9 - 11	STAGING PLANS
12	EROSION CONTROL PLAN
13	GRADING PLAN
14	PAVEMENT MARKING PLANS
15 - 18	BRIDGE REPAIR PLANS I-190 OVER DES PLAINES RIVER ROAD
19 - 24	STANDARD DRAWINGS

LIST OF DISTRICT 1 STANDARD DRAWINGS

STANDARD NO.	DESCRIPTION
TC-8	ENTRANCE AND EXIT RAMP CLOSURE DETAILS
TC-9	SINGLE LANE WEAVE AND MULTI-LANE WEAVE
TC-10	TRAFFIC CONTROL AND PROTECTION FOR SIDE ROADS, INTERSECTIONS, AND DRIVEWAYS
TC-13	DISTRICT ONE TYPICAL PAVEMENT MARKINGS
TC-17	PARTIAL RAMP & SHOULDER CLOSURE DETAILS
TC-22	ARTERIAL ROAD INFORMATION SIGN

LIST OF IDOT HIGHWAY STANDARDS

STANDARD NO.	DESCRIPTION
000001-08	STANDARD SYMBOLS, ABBREVIATIONS AND PATTERNS
001001-02	AREAS OF REINFORCEMENT BARS
001006	DECIMAL OF AN INCH AND OF A FOOT
280001-07	TEMPORARY EROSION CONTROL SYSTEMS
602011-02	CATCH BASIN TYPE C
604086-05	FRAME AND GRATE, TYPE 23
606001-08	CONCRETE CURB TYPE B AND COMBINATION CONCRETE CURB AND GUTTER
701101-05	OFF-ROAD OPERATIONS, MULTILANE, 15' (4.5 M) TO 24" (600 MM) FROM PAVEMENT EDGE
701106-02	OFF-ROAD OPERATIONS, >15' (4.5 M) AWAY
701400-12	APPROACH TO LANE CLOSURE, FREEWAY / EXPRESSWAY
701401-13	LANE CLOSURE, FREEWAY / EXPRESSWAY
701427-05	LANE CLOSURE, MULTILANE, INTERMITTENT OR MOVING OPERATION, FOR SPEEDS ≤ 40 MPH
701428-01	TRAFFIC CONTROL SETUP & REMOVAL FREEWAY / EXPRESSWAY
701411-09	LANE CLOSURE MULTILANE ENTRANCE OR EXIT RAMP 45MPH OR MORE
701601-09	URBAN LANE CLOSURE, MULTILANE, 1W OR 2W WITH NONTRAVERSABLE MEDIAN SIDEWALK,
701801-06	CORNER OR CROSSWALK CLOSURE
701901-10	TRAFFIC CONTROL DEVICES
704001-08	TEMPORARY CONCRETE BARRIER
782006-01	GUARDRAIL AND BARRIER WALL REFLECTOR MOUNTING DETAILS

GENERAL NOTES

- THE CONTRACTOR SHALL CONTACT J.U.L.I.E. AT LEAST 48 HOURS PRIOR TO EXCAVATION TO DETERMINE WHICH UTILITIES ARE IN THE AREA.
- THE “ARTERIAL ROAD INFORMATION SIGN (TC-22)” IS APPLICABLE ONLY TO ARTERIAL ROADS AND SHALL NOT BE APPLIED TO EXPRESSWAYS/TOLLWAYS.
- NO CONSTRUCTION SHALL BEGIN UNTIL ALL PROPER TEMPORARY SIGNS AND BARRICADES HAVE BEEN INSTALLED.
- THE CONTRACTOR SHALL COORDINATE CONSTRUCTION ACTIVITIES WITH UTILITY COMPANIES TO HAVE THE LOCATION OF EXISTING UTILITIES STAKED AT LEAST FORTY-EIGHT (48) HOURS PRIOR TO EXCAVATION.
- THE ENGINEER SHALL CONTACT ABDULLA ALI, AREA TRAFFIC FIELD ENGINEER (or TECHNICIAN), AT (815) 485-6475 A MINIMUM OF TWO (2) WEEKS PRIOR TO THE PLACEMENT OF PERMANENT PAVEMENT MARKINGS.
- IT SHALL BE THE CONTRACTORS RESPONSIBILITY TO VERIFY ALL DIMENSIONS AND CONDITIONS EXISITNG IN THE FIELD PRIOR TO CONSTRUCTION AND ORDERING OF MATERIALS.
- THE CONTACTOR WILL NOT BE ABLE TO SET UP A YARD OR FIELD OFFICE ON STATE PROPERTY WITHOUT WRITTEN PERMISSION FROM THE DEPARTMENT.
- THE CONTRACTOR SHALL USE CARE NEAR ANY AND ALL EXISTING ITEMS THAT WILL NOT BE REMOVED. ANY DAMAGE DONE TO EXISTING ITEMS BY THE CONTRACTOR SHALL BE REPAIRED OR REPLACED TO THE SATISFACTION OF THE ENGINEER AT THE CONTRACTOR'S OWN EXPENSE.
- DO NOT SCALE PLANS FOR CONSTRUCTION DIMENSIONS.
- DURING CONSTRUCTION OPERATIONS, IF ANY LOOSE MATERIAL IS DEPOSITED IN THE FLOW LINE OF DRAINAGE STRUCTURES SUCH THAT THE NATURAL FLOW OF WATER IS OBSTRUCTED, THE MATERIAL SHALL BE REMOVED AT THE CLOSE OF EACH WORKDAY. AT THE CONCLUSION OF CONSTRUCTION OPERATIONS, ALL UTILITY STRUCTURES SHALL BE FREE FROM DUST AND DEBRIS. THE WORK SPECIFIED ABOVE WILL NOT BE PAID SEPARATELY BUT SHALL BE INCLUDED IN THE COST OF CONTRACT.
- WHERE NEW WORK MEETS EXISTING FEATURES TO REMAIN, FIELD CHECK ALL DIMENSIONS AND ELEVATIONS BEFORE PROCEEDING WITH CONSTRUCTION. NOTIFY THE ENGINEER IMMEDIATELY OF ANY DISCREPANCIES.
- THE CONTRACTOR SHALL CONTACT THE ARTERIAL TRAFFIC CONTROL SUPERVISOR AT KALPANA.KANNAN-HOSADURGA@ILLINOIS.GOV A MINIMUM OF 72 HOURS IN ADVANCE OF BEGINNING WORK.
- CHANGEABLE MESSAGE SIGNS SHALL BE INSTALLED TWO WEEKS PRIOR TO ALL TRAFFIC STAGE CHANGES ON EACH APPROACH OF THE AFFECTED ROADWAY TO WARN MOTORISTS OF THE UPCOMING EVENT. THE SIGNS SHALL BE REMOVED TWO WEEKS THEREAFTER UNLESS THE SIGNS ARE NEEDED AGAIN FOR A SUBSEQUENT FUTURE EVENT THAT WILL OCCUR WITHIN TWO WEEKS ON THE SAME APPROACH OF THE AFFECTED ROADWAY. THE SIGN LOCATIONS SHALL BE DETERMINED BY THE ENGINEER.
- BEFORE BEGINNING ANY WORK, THE CONTRACTOR SHALL RETAIN AND RECORD, FOR FUTURE REFERENCE, ALL EXISTING PAVEMENT MARKING LINES (AND RAISED REFLECTIVE PAVEMENT MARKERS) IN ORDER THAT THESE LOCATIONS BE RE-ESTABLISHED FOR STRIPING. EXACT LOCATIONS OF ALL PAVEMENT MARKINGS SHALL BE AS DIRECTED BY THE ENGINEER.
- THE CONTRACTOR SHALL CONTACT THE IDOT EXPRESSWAY TRAFFIC CONTROL SUPERVISOR DISTRICT ONE CARLOS AT CARLOS.MUNOZ@ILLINOIS.GOV A MINIMUM OF 72 HOURS IN ADVANCE OF BEGGING OF WORK.

MWRD NOTE

THE CONTRACTOR IS TO WORK WITH MWRD STAFF TO PHYSICALLY LOCATE MWRD FACILITIES IN THE FIELD IN ORDER TO AVOID ANY NEGATIVE IMPACT. MINIMUM VERTICAL/HORIZONTAL CLEARANCE OF 2-FT SHALL BE MAINTAINED BETWEEN DISTRICT SEWER AND THE PROPOSED SEWER. THE CONTRACTOR SHALL BE RESPONSIBLE FOR PROTECTING MWRD FACILITIES FROM ALL CONSTRUCTION OPERATIONS, VIBRATIONS, AND HEAVY EQUIPMENT. DURING CONSTRUCTION IT IS REQUESTED TO EXERCISE EXTRA CAUTION FOR THE SAFETY AND INTEGRITY OF OUR FACILITIES. IN ORDER TO MAINTAIN SERVICE, NO ACCESS HATCHES AND MANHOLE COVERS ON MWRD STRUCTURES AND MANHOLES WITHIN THE PROJECT AREA SHALL BE BURIED OR COVERED; NO DEBRIS SHALL ENTER MWRD STRUCTURES, SEWERS, OR FACILITIES. MWRD PERSONNEL SHALL HAVE UNRESTRICTED ACCESS 24 HOURS A DAY TO ALL MWRD FACILITIES. FOR ANY QUESTIONS REGARDING ACCESS TO OUR FACILITY OR FIELD LOCATION, PLEASE CONTACT MR. PAUL SOBANSKI, AT (708) 588-4080. WE FURTHER REQUEST THAT MWRD MANHOLES BE LOCATED, PROTECTED AND/OR ADJUSTED TO GRADE, IF NECESSARY. IF ANY MANHOLE NEEDS TO BE LOCATED/ADJUSTED PLEASE CONTACT MR. SOBANSKI.

HMA MIXTURE TABLE

HOT-MIX ASPHALT MIXTURE REQUIREMENTS		QMP
MIXTURE TYPE	AIR VOIDS @ Ndesign	
HOT-MIX ASPHALT SURFACE COURSE, IL-9.5, MIX "D"	4% @ 70 GYR.	QC/QA

QMP DESIGNATION: QUALITY CONTROL/QUALITY ASSURANCE (QC/QA); QUALITY CONTROL FOR PERFORMANCE (QCP)

THE UNIT WEIGHT USED TO CALCULATE ALL HMA SURFACE MIXTURE QUANTITIES IS 112 LB/SQ YD/IN.

THE "AC TYPE" FOR POLYMERIZED HMA MIXES SHALL BE "SBS/SBR PG 75-22" AND FOR NON-POLYMERIZED HMA THE "AC TYPE" SHALL BE "PG 64-22" UNLESS MODIFIED BY RECLAIMED MATERIALS SPECIFICATIONS.

COMMITMENTS

NONE

MODEL: Default  
FILE NAME: R:\Projects\5988 Atis - IDOT\17B 2004\Drawings\Civil\CAD\_Sheets\0123456\_ah.dgn

THE HOH GROUP, INC. ARCHITECTS   ENGINEERS	USER NAME = afzpatrick	DESIGNED - AAF	REVISED -	STATE OF ILLINOIS DEPARTMENT OF TRANSPORTATION	INDEX OF SHEETS /HIGHWAY STANDARDS / GENERAL NOTES / COMMITMENTS				F.A.I. RTE.	SECTION	COUNTY	TOTAL SHEETS	SHEET NO.
		DRAWN - AAF	REVISED -						190	(1293-BR) BR 25	COOK	24	2
	PLOT SCALE = 100.0000" / in.	CHECKED - BAP	REVISED -						CONTRACT NO. 62Y04				
	PN: 5988	PLOT DATE = 4/16/2025	DATE - 2/20/25		SCALE: NTS	SHEET 1	OF 1	SHEETS	STA. N/A	TO STA. N/A	ILLINOIS   FED. AID PROJECT		

Model: Default  
File Name: C:\Users\afzpatrick\OneDrive\Documents\Drawings\Civil\CAD Sheets\ID123456\_S00.dgn  
IDOT PFB 2000M Drawings\Civil\CAD Sheets\ID123456\_S00.dgn

THE HOH GROUP, INC.

ARCHITECTS | ENGINEERS

PN: 5988

USER NAME	= afzpatrick	DESIGNED -	AAF	REVISED -	
		DRAWN -	AAF	REVISED -	
PLOT SCALE	= 2,000 ' / in.	CHECKED -	BAP	REVISED -	
PLOT DATE	= 4/7/2025	DATE -	2/20/25	REVISED -	

STATE OF ILLINOIS  
DEPARTMENT OF TRANSPORTATION

SUMMARY OF QUANTITIES

SCALE: SHEET OF SHEETS STA. TO STA.

F.A.I. RTE.	SECTION	COUNTY	TOTAL SHEETS	SHEET NO.
190	(1293-BR) BR 25	COOK	24	3
			CONTRACT NO. 62Y04	
		ILLINOIS	FED. AID PROJECT	

Model: Default  
File Name: R:\Projects\5988 Atlas - IDOT PFB 2000\Drawings\Civil\CAD\_Sheets\ID123456\_500.dgn

THE HOH GROUP, INC.

ARCHITECTS | ENGINEERS

PN: 5988

USER NAME = afizpatrick	DESIGNED - AAF	REVISED -
	DRAWN - AAF	REVISED -
PLOT SCALE = 2.000' / in.	CHECKED - BAP	REVISED -
PLOT DATE = 4/7/2025	DATE - 2/20/25	REVISED -

STATE OF ILLINOIS  
DEPARTMENT OF TRANSPORTATION

SUMMARY OF QUANTITIES			
SCALE:	SHEET	OF SHEETS	STA. TO STA.

F.A.I. RTE. 190	SECTION (1293-BR) BR 25	COUNTY COOK	TOTAL SHEETS 24	SHEET NO. 4
			CONTRACT NO. 62Y04	
		ILLINOIS	FED. AID PROJECT	

CODE NO.	ITEM	UNIT	TOTAL QUANTITY URBAN	CONSTRUCTION CODE	
				100% STATE	100% STATE
				ROADWAY	I-190 BRIDGES
				0006 URBAN	0013 URBAN
44213200	SAW CUTS	FOOT	349	349	
50300225	CONCRETE STRUCTURES	CU YD	31.6		31.6
50500405	FURNISHING AND ERECTING STRUCTURAL STEEL	POUND	41,800		41,800
50800205	REINFORCEMENT BARS, EPOXY COATED	POUND	5,500		5,500
52100510	ANCHOR BOLTS, 3/4"	EACH	160		160
550A0340	STORM SEWERS, CLASS A, TYPE 2 12"	FOOT	3	3	
60206905	CATCH BASINS, TYPE C, TYPE 1 FRAME, OPEN LID	EACH	1	1	
60252800	CATCH BASINS TO BE RECONSTRUCTED	EACH	1	1	
60255410	CATCH BASINS TO BE CLEANED	EACH	1	1	
60406100	FRAMES AND LIDS, TYPE 1, CLOSED LID	EACH	1	1	
60603800	COMBINATION CONCRETE CURB AND GUTTER, TYPE B-6.12	FOOT	349	349	
67000400	ENGINEER'S FIELD OFFICE, TYPE A	CAL MO	6	6	
67100100	MOBILIZATION	L SUM	1	1	
70107025	CHANGEABLE MESSAGE SIGN	CAL DA	180	180	



Model: Default  
File Name: I:\Projects\5988 A\Is - IDOT PFB 2000\Drawings\Civil\CAD Sheets\ID123456\_S00.dgn

THE HOH GROUP, INC.

ARCHITECTS | ENGINEERS

PN: 5988

USER NAME	= afizpatrick	DESIGNED -	AAF	REVISED -	
		DRAWN -	AAF	REVISED -	
PLOT SCALE	= 2,000 * / in.	CHECKED -	BAP	REVISED -	
PLOT DATE	= 4/7/2025	DATE -	2/20/25	REVISED -	

DESIGNED -	AAF	REVISED -	
DRAWN -	AAF	REVISED -	
CHECKED -	BAP	REVISED -	
DATE -	2/20/25	REVISED -	

STATE OF ILLINOIS  
DEPARTMENT OF TRANSPORTATION

SUMMARY OF QUANTITIES			
SCALE:	SHEET	OF	SHEETS
STA.		TO STA.	

F.A.I. RTE.	SECTION	COUNTY	TOTAL SHEETS	SHEET NO.
190	(1293-BR) BR 25	COOK	24	5
CONTRACT NO. 62Y04				
		ILLINOIS	FED. AID PROJECT	

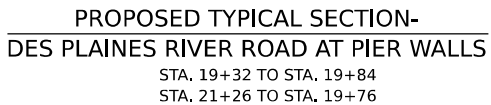
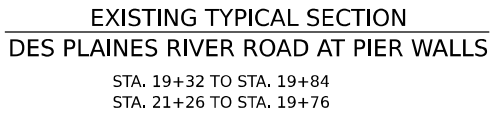
CODE NO.	ITEM	UNIT	TOTAL QUANTITY URBAN	CONSTRUCTION CODE	
				100% STATE	100% STATE
				ROADWAY	I-190 BRIDGES
				0006 URBAN	0013 URBAN
70300150	SHORT TERM PAVEMENT MARKING REMOVAL	SQ FT	496	496	
70307120	TEMPORARY PAVEMENT MARKING - LINE 4" - TYPE IV TAPE	FOOT	1,093	1,093	
70307140	TEMPORARY PAVEMENT MARKING - LINE 8" - TYPE IV TAPE	FOOT	157	157	
70307160	TEMPORARY PAVEMENT MARKING - LINE 12"- TYPE IV TAPE	FOOT	31	31	
70400100	TEMPORARY CONCRETE BARRIER	FOOT	438	438	
70600235	IMPACT ATTENUATORS, TEMPORARY (FULLY REDIRECTIVE), TEST LEVEL 2	EACH	1	1	
* 78000200	THERMOPLASTIC PAVEMENT MARKING - LINE 4"	FOOT	1,071	1,071	
* 78000500	THERMOPLASTIC PAVEMENT MARKING - LINE 8"	FOOT	207	207	
* 78000600	THERMOPLASTIC PAVEMENT MARKING - LINE 12"	FOOT	12	12	
78300202	PAVEMENT MARKING REMOVAL - WATER BLASTING	SQ FT	502	502	
* 89502376	REBUILD EXISTING HANDHOLE	EACH	1	1	
* Z0007122	REMOVING AND RE-ERECTING EXISTING RAILING	FOOT	287	287	
* X6026624	VALVE BOXES TO BE ADJUSTED (SPECIAL)	EACH	1	1	
X6030310	FRAMES AND LIDS TO BE ADJUSTED (SPECIAL)	EACH	1	1	

\* SPECIALTY ITEM

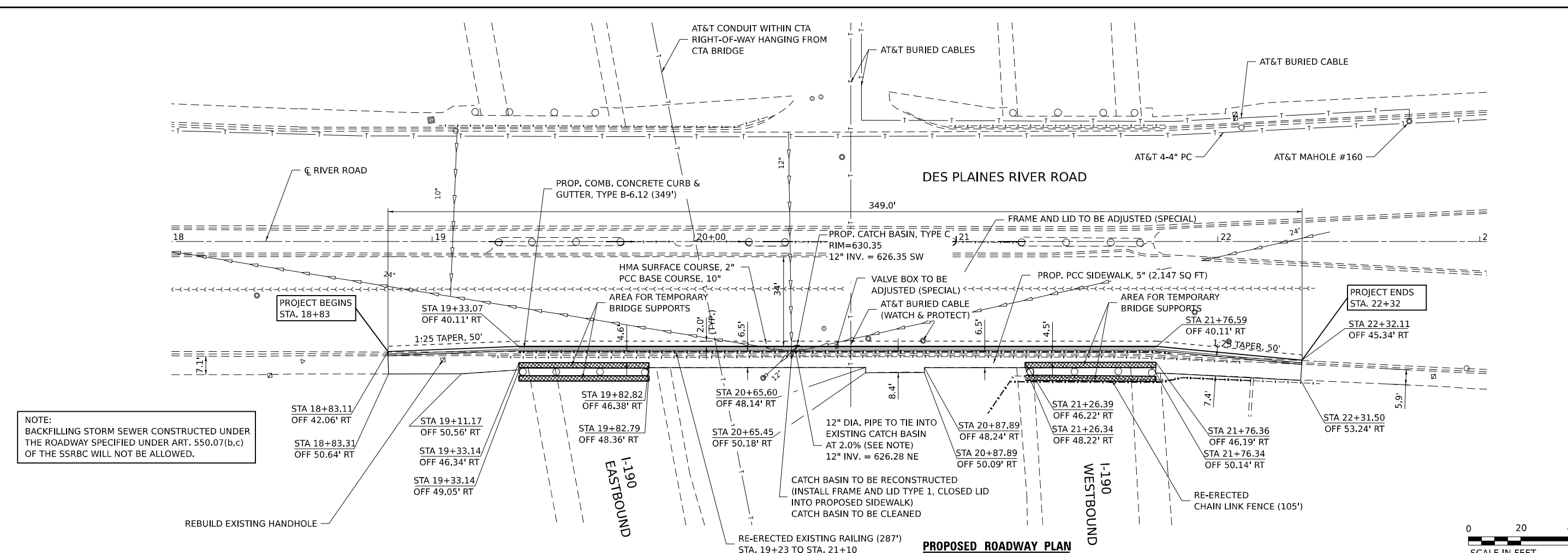
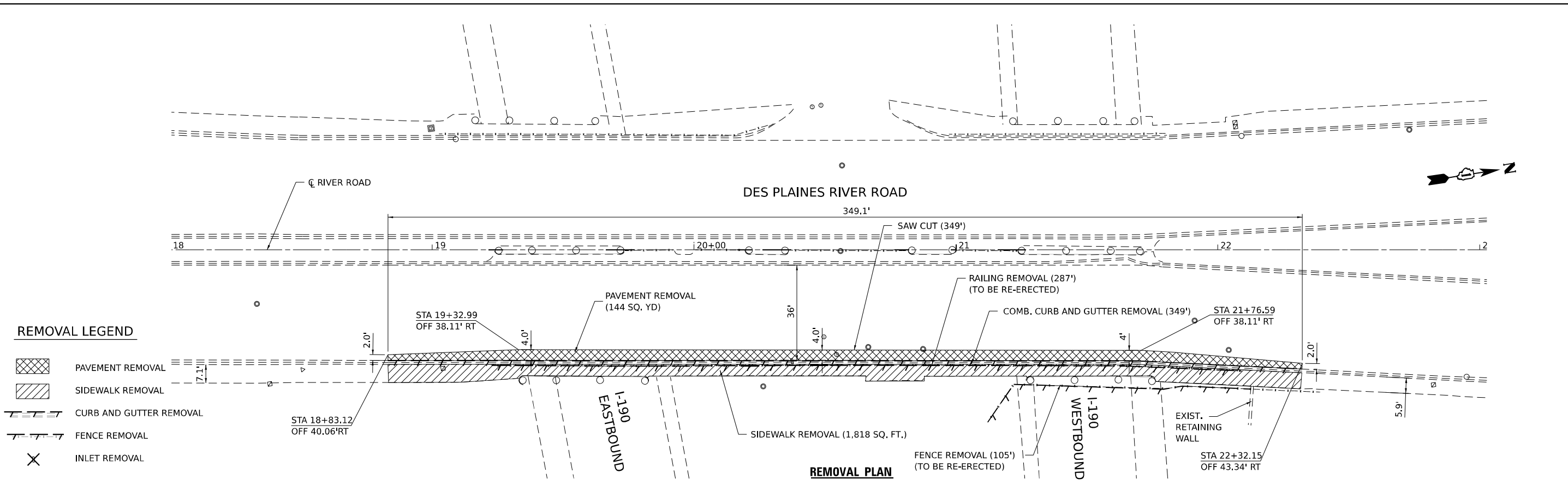
**STATE OF ILLINOIS  
DEPARTMENT OF TRANSPORTATION**

SUMMARY OF QUANTITIES			
SCALE:	SHEET	OF SHEETS	STA. TO STA.

[illegible]



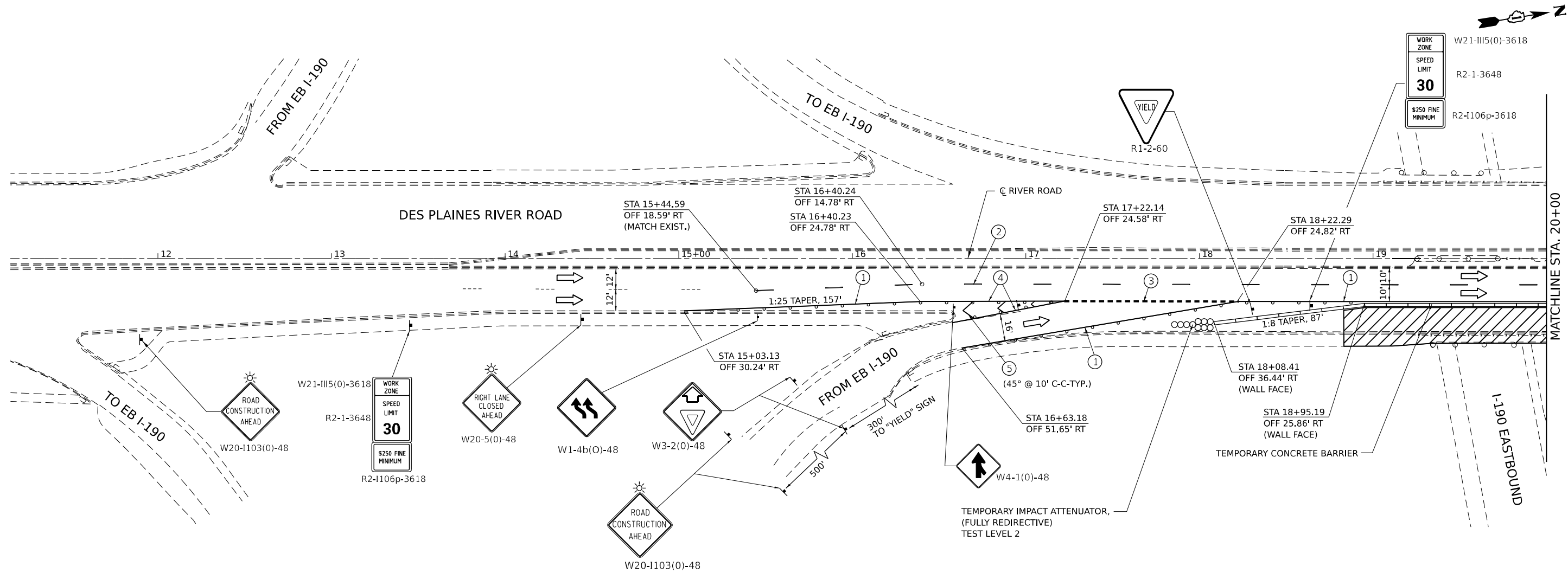




THE HOH GROUP, INC. ARCHITECTS   ENGINEERS				STATE OF ILLINOIS DEPARTMENT OF TRANSPORTATION				DES PLAINES RIVER ROAD PROPOSED ROADWAY AND REMOVAL PLAN				F.A.I. RTE. SECTION COUNTY TOTAL SHEETS SHEET NO. 190 (1293-BR) BR 25 COOK 24 8 CONTRACT NO. 62Y04			
USER NAME = afzpatrick				DESIGNED - AAF				SCALE: 1"=20'				ILLINOIS FED. AID PROJECT			
DRAWN - AAF				REVISED -				SHEET 1 OF 1 SHEETS							
PLOT SCALE = 40,000' / in.				CHECKED - BAP				STA. 18+00 TO STA. 23+00							
PLOT DATE = 4/5/2025				DATE - 2/20/25											
PN: 5988				REVISED -											



MODEL: Default  
FILE NAME: C:\Users\afzpatrick\OneDrive\Documents\Drawings\Civil\CAD\_Sheets\123456\_Staging.dgn  
PROJECT: 123456  
DATE: 3/28/2025



TEMPORARY PAVEMENT MARKINGS LEGEND:

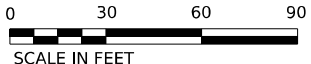
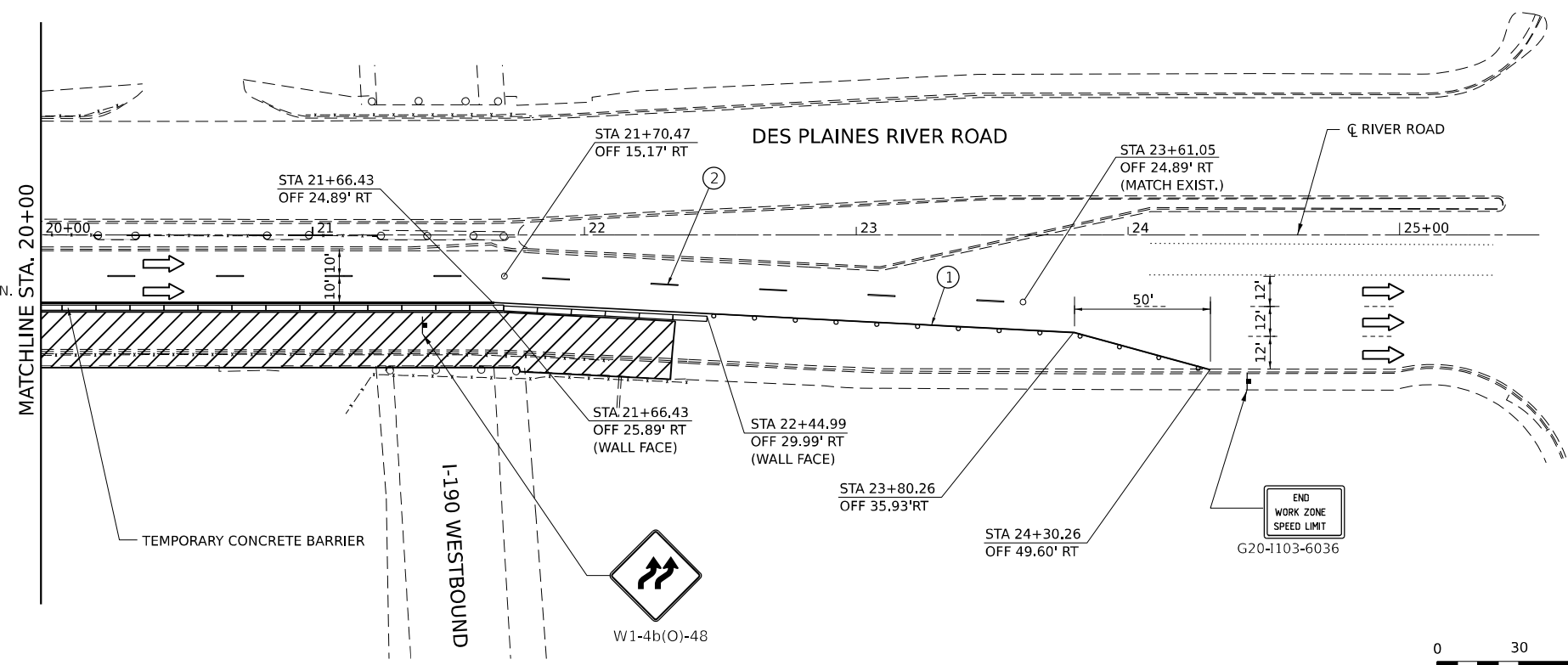
- ① PAVEMENT MARKING TAPE, TYPE IV 4" (SOLID, WHITE)
- ② PAVEMENT MARKING TAPE, TYPE IV 4" (30' SKIP-10' DASH, WHITE)
- ③ PAVEMENT MARKING TAPE, TYPE IV 8" (6' SKIP-2' DASH, WHITE)
- ④ PAVEMENT MARKING TAPE, TYPE IV 8" (SOLID, WHITE)
- ⑤ PAVEMENT MARKING TAPE, TYPE IV 12" (SOLID, WHITE)

MOT PLAN LEGEND:

- CONSTRUCTION WORK ZONE
- TYPE II BARRICADES OR DRUMS @ 50' CENTERS (20' CENTERS ALONG TAPERS)
- CONSTRUCTION SIGN
- DIRECTION OF TRAFFIC FLOW
- TEMPORARY CONCRETE BARRIER
- TEMPORARY ATTENUATOR

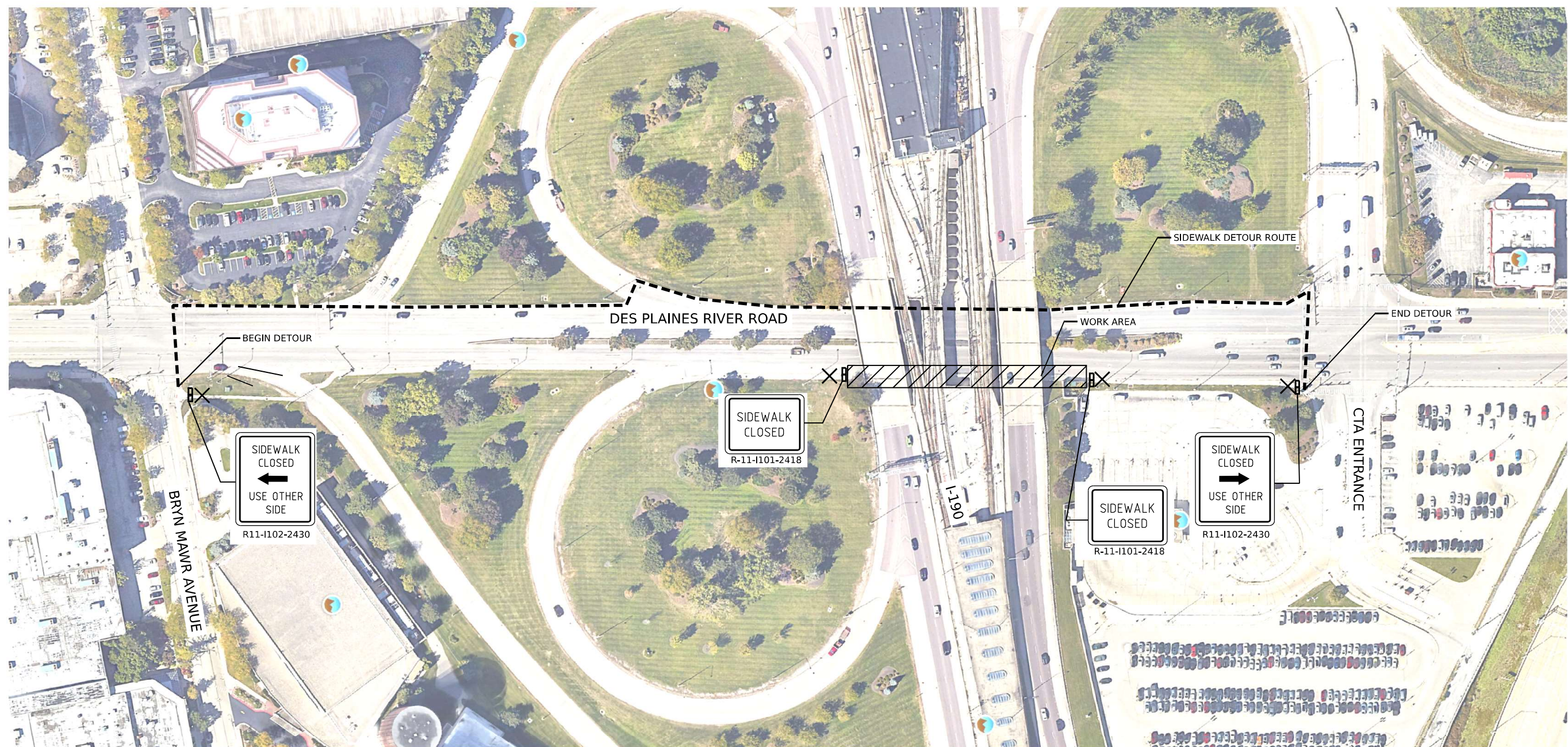
STAGING NOTES:

- USE IDOT STANDARD 701801 TO CLOSE THE SOUTH SIDEWALK AND DIVERT SIDEWALK TRAFFIC TO THE SIDEWALK ON THE NORTH SIDE OF RIVER ROAD FROM BRYN MAWR AVENUE (WEST) TO THE CTA ENTRANCE (EAST), SEE SIDEWALK DETOUR PLAN.
- EXISTING PAVEMENT MARKINGS THAT CONFLICT WITH WORK ZONE PAVEMENT MARKINGS SHALL BE REMOVED.



THE HOH GROUP, INC. ARCHITECTS ENGINEERS PN: 5988	USER NAME = afzpatrick		DESIGNED - AAF	REVISED -	STATE OF ILLINOIS DEPARTMENT OF TRANSPORTATION	TITLE DES PLAINES RIVER ROAD STAGING PLAN			F.A.I. RTE.	SECTION	COUNTY	TOTAL SHEETS	SHEET NO.
	PLOT SCALE = 60,000' / in.		DRAWN - AAF	REVISED -					190	(1293-BR) BR 25	COOK	24	10
	PLOT DATE = 3/28/2025		CHECKED - BAP	REVISED -		SCALE: 1"=30'			CONTRACT NO. 62Y04				
			DATE - 2/20/25	REVISED -		SHEET OF SHEETS STA. TO STA.			ILLINOIS FED. AID PROJECT				





- LEGEND**
- WORK AREA
  - DETOUR ROUTE
  - DETECTABLE PEDESTRIAN CHANNELIZATION  
BARRICADE PER IDOT STANDARDS 701801/701901
  - SIDEWALK CLOSURES

**DES PLAINES RIVER ROAD SIDEWALK DETOUR**

MODEL: Default  
FILE NAME: C:\projects\5988 AFBs - IDOT PFB 2000\Drawings\Civil\CAD Sheets\0123456 Staging\Detour.dgn

**THE HOH GROUP, INC.**  
ARCHITECTS ENGINEERS  
PN: 5988

USER NAME	= afzpatrick	DESIGNED -	AAF	REVISED -	
DRAWN -	AAF	REVIS			
PLOT SCALE	= 2,000' = 1 in.	CHECKED -	BAP	REVISED -	
PLOT DATE	= 3/28/2025	DATE -	2/20/25	REVISED -	

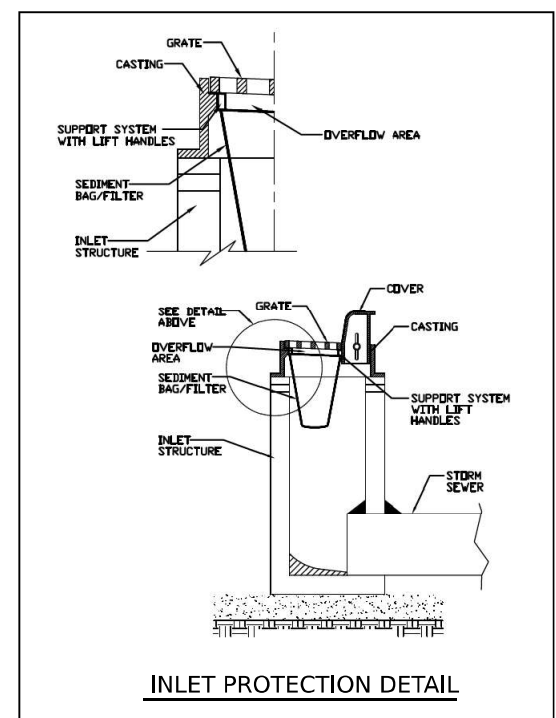
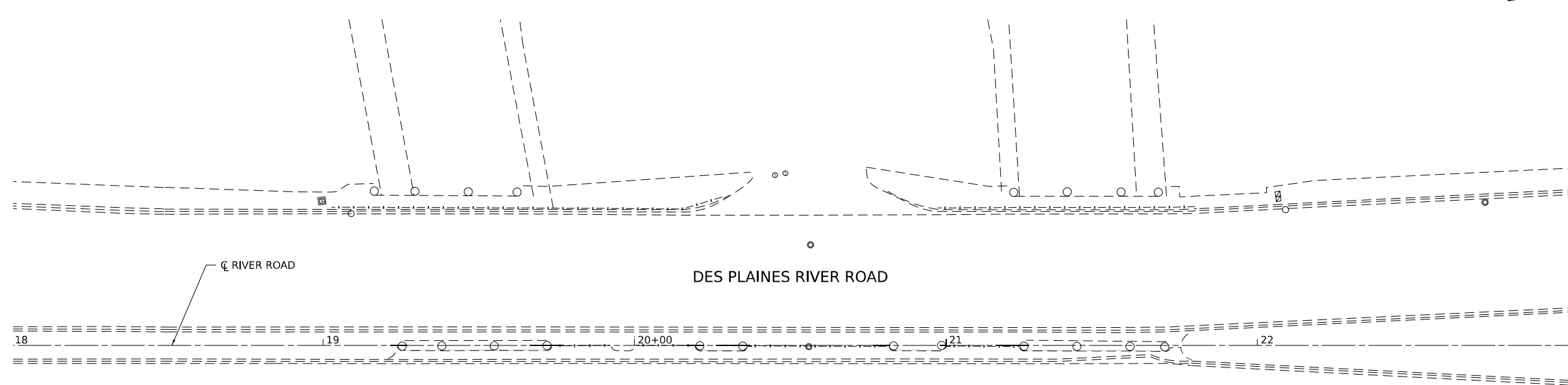
**STATE OF ILLINOIS  
DEPARTMENT OF TRANSPORTATION**

**DES PLAINES RIVER ROAD  
SIDEWALK DETOUR**

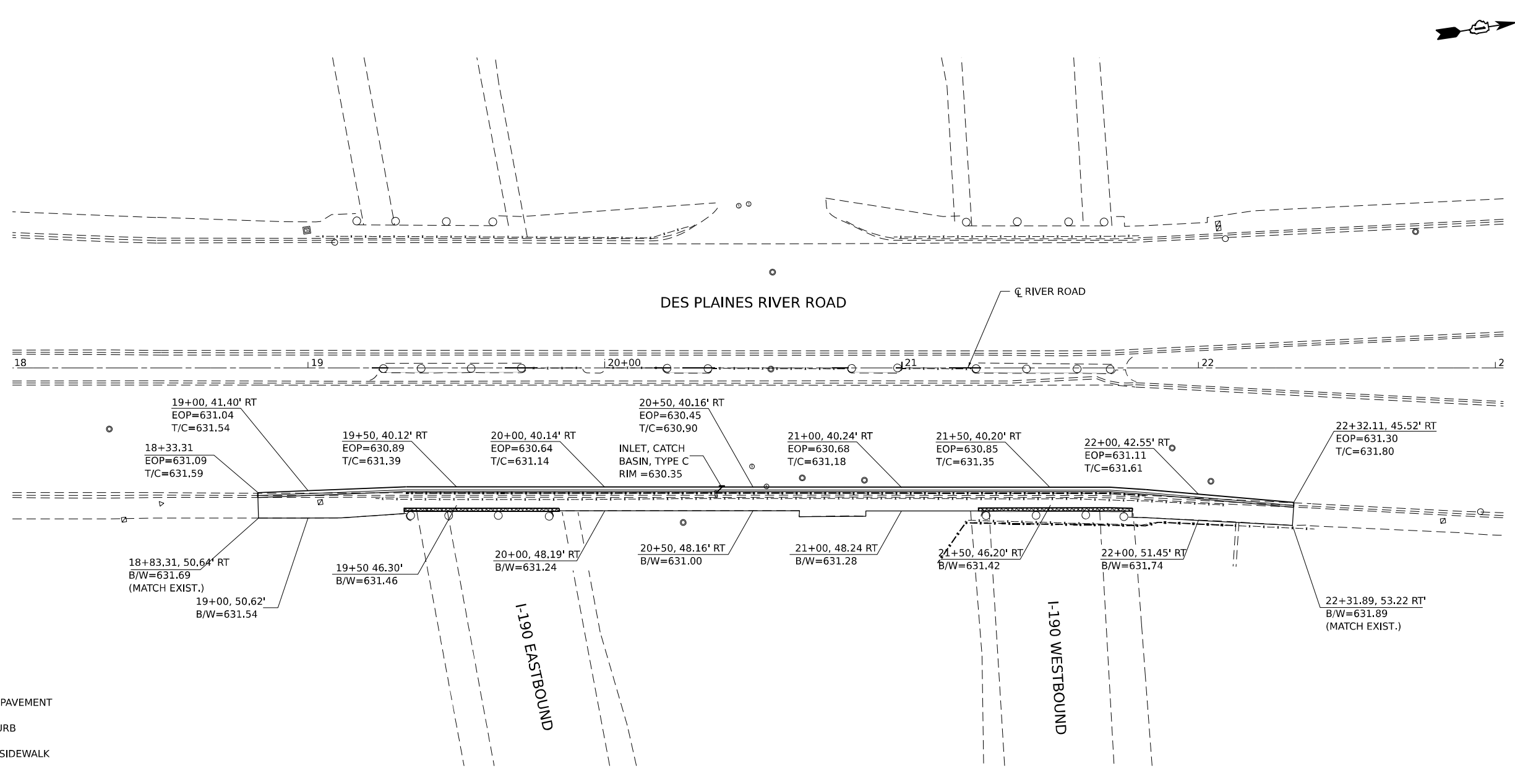
SCALE: NTS    SHEET 3 OF 3 SHEETS    STA. N/A    TO STA. N/A

F.A.I. RTE.	SECTION	COUNTY	TOTAL SHEETS	SHEET NO.
190	(1293-BR) BR 25	COOK	24	11
CONTRACT NO. 62Y04				
ILLINOIS FED. AID PROJECT				





THE HOH GROUP, INC. ARCHITECTS ENGINEERS  PN: 5988	USER NAME = afzpatrick	DESIGNED - AAF	REVISED -	STATE OF ILLINOIS DEPARTMENT OF TRANSPORTATION	DES PLAINES RIVER ROAD EROSION CONTROL PLAN				F.A.I. RTE.	SECTION	COUNTY	TOTAL SHEETS	SHEET NO.	
	PLOT SCALE = 40,000' / in.	DRAWN - AAF	REVISED -						190	(1293-BR) BR 25	COOK	24	12	
	PLOT DATE = 3/28/2025	CHECKED - BAP	REVISED -		SCALE: 1"=20'				SHEET 1	OF 1 SHEETS	STA. 18+00	TO STA. 23+00		
		DATE - 2/20/25	REVISED -									CONTRACT NO. 62Y04		
												ILLINOIS	FED. AID PROJECT	



**LEGEND**

EOP = EDGE OF PAVEMENT

T/C = TOP OF CURB

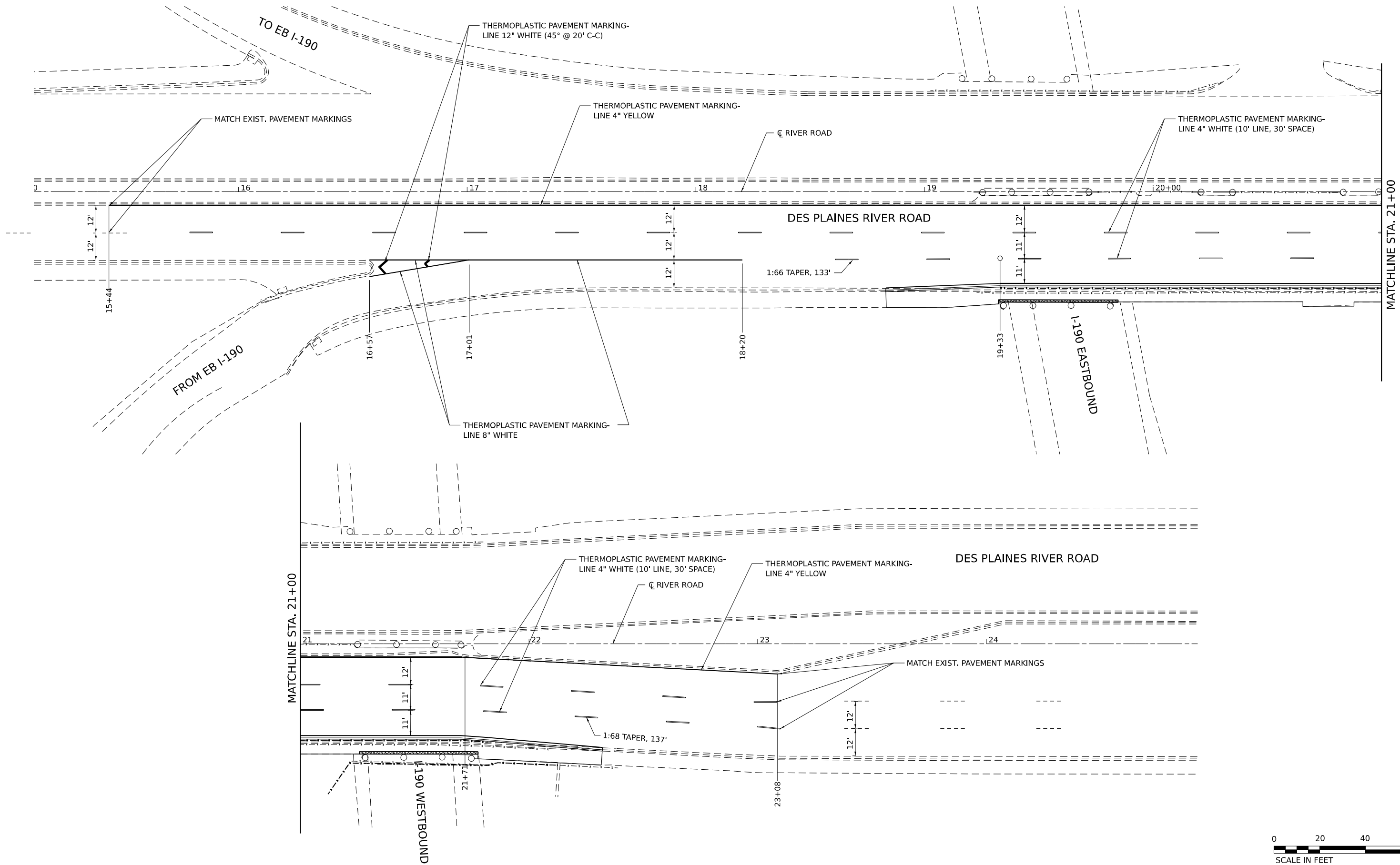
B/W = BACK OF SIDEWALK



MODEL: Default  
FILE NAME: I:\Projects\5988 A\Brs - IDOT\712 2000\Drawings\Civil\CAD Sheets\0123456 Grading.dgn

THE <b>HOH</b> GROUP, INC. <small>ARCHITECTS   ENGINEERS</small>	USER NAME = afizpatrick	DESIGNED - AAF	REVISED -	STATE OF ILLINOIS DEPARTMENT OF TRANSPORTATION	DES PLAINES RIVER ROAD GRADING PLAN					F.A.I. RTE.	SECTION	COUNTY	TOTAL SHEETS	SHEET NO.
		DRAWN - AAF	REVISED -							190	(1293-BR) BR 25	COOK	24	13
	PLOT SCALE = 40,000' / in.	CHECKED - BAP	REVISED -							CONTRACT NO. 62Y04				
	PN: 5988	PLOT DATE = 3/28/2025	DATE - 2/20/25							REVISED -	ILLINOIS FED. AID PROJECT			
						SCALE: 1"=20'	SHEET 1	OF 1 SHEETS	STA. 18+00	TO STA. 23+00				





MODEL: Default  
FILE NAME: C:\projects\5988 Afb - IDOT PBE 2000\Drawings\Civil\CAD Sheets\0123456 Pavement Marking.dgn

THE <div>HOH</div> GROUP, INC. <div>ARCHITECTS   ENGINEERS</div>	USER NAME = afzpatrick		DESIGNED - AAF	REVISED -	STATE OF ILLINOIS DEPARTMENT OF TRANSPORTATION	DES PLAINES RIVER ROAD PAVEMENT MARKING PLAN					F.A.I. RTE.	SECTION	COUNTY	TOTAL SHEETS	SHEET NO.
	PLOT SCALE = 40,000' / in.		DRAWN - AAF	REVISED -							190	(1293-BR) BR 25	COOK	24	14
	PLOT DATE = 3/28/2025		CHECKED - BAP	REVISED -		CONTRACT NO. 62Y04									
	PN: 5988		DATE - 2/20/25	REVISED -		ILLINOIS   FED. AID PROJECT									
									SCALE: 1"=20'	SHEET 1	OF 1 SHEETS	STA. 18+00	TO STA. 23+00		

MODEL: 62Y04-015  
FILE NAME: pw:///idiot-pw/bentley.com:PWIDOT/Documents/IDOT O ces/Bureau of Bridges and Structures/OBM Projects/0160511/CADDData/Structures/0160511.dgn



EXPIRES 11-30-2026

DESIGNED -	Jeffrey S. Burke
CHECKED -	Victor H. Veliz
DRAWN -	STEFFEN
CHECKED -	JSB VHV

EXAMINED	<i>Tom J. Kautsky</i> ENGINEER OF STRUCTURAL SERVICES	DATE -	MAY 6, 2025
PASSED	<i>Jayme F. Schuff</i> ENGINEER OF BRIDGES AND STRUCTURES	REVISED -	
		REVISED -	

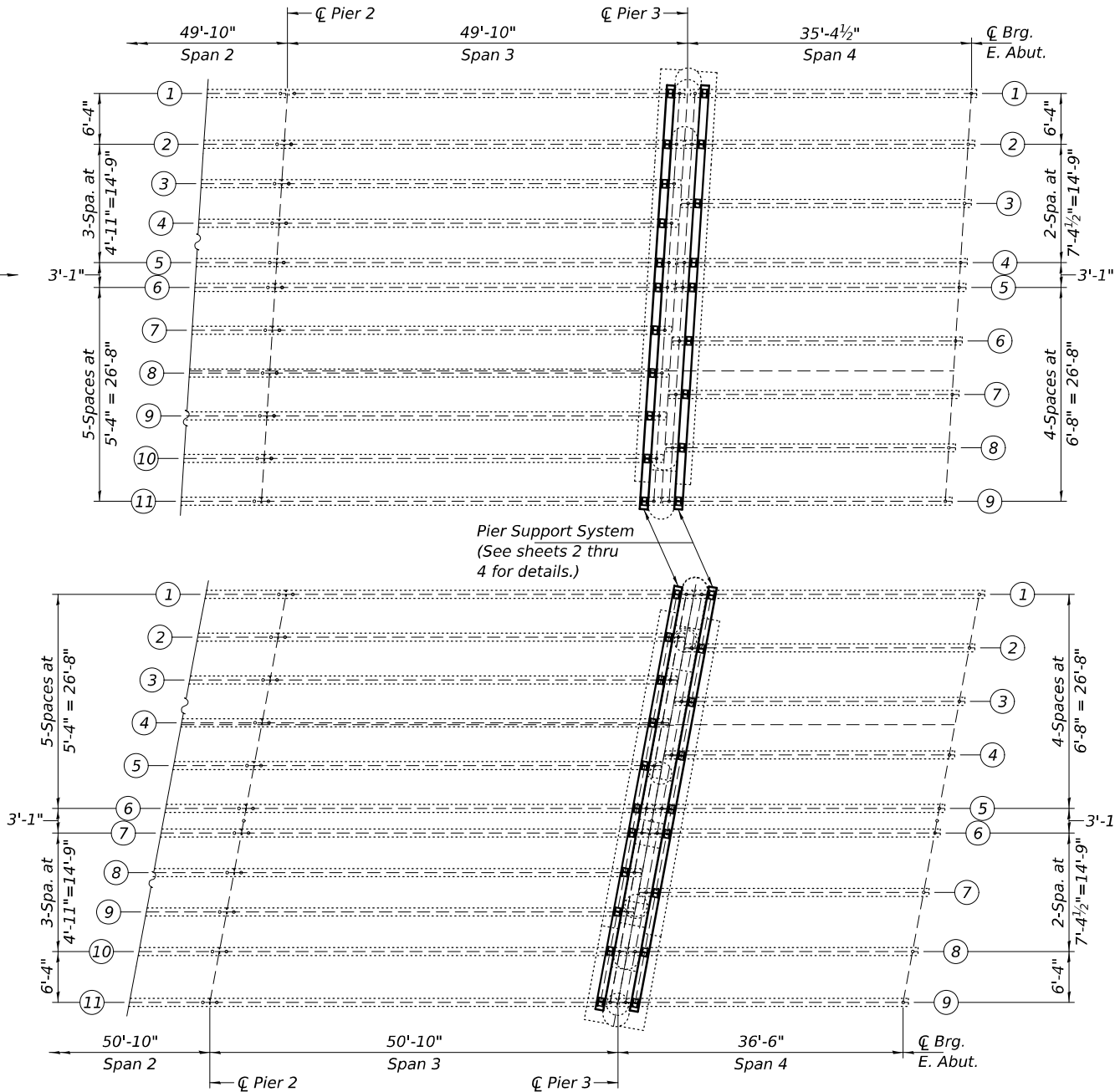
STATE OF ILLINOIS  
DEPARTMENT OF TRANSPORTATION

PARTIAL FRAMING PLAN & ELEVATION  
F.A.I. 190 OVER DES PLAINES RIVER ROAD  
SN 016-0511 (E.B.) & -0512 (W.B.)

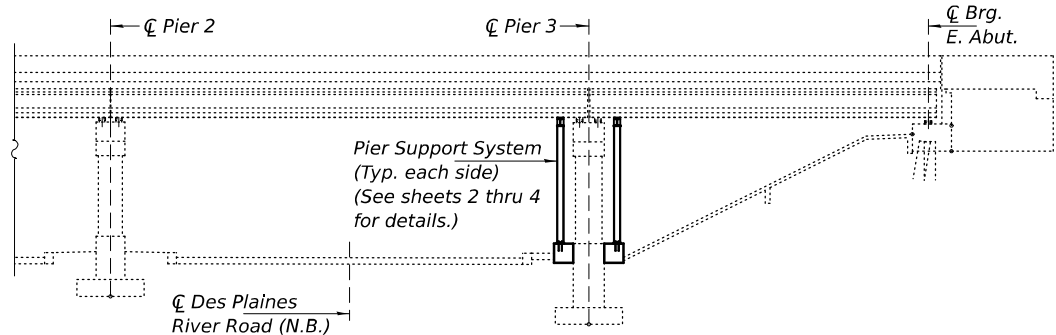
SHEET 1 OF 4 SHEETS

F.A.I. RTE.	SECTION	COUNTY	TOTAL SHEETS	SHEET NO.
190	(1293-BR) BR 25	COOK	24	15
CONTRACT NO. 62Y04				
ILLINOIS FED. AID PROJECT				

SN 016-0512  
(Westbound)



PARTIAL FRAMING PLAN



PARTIAL ELEVATION

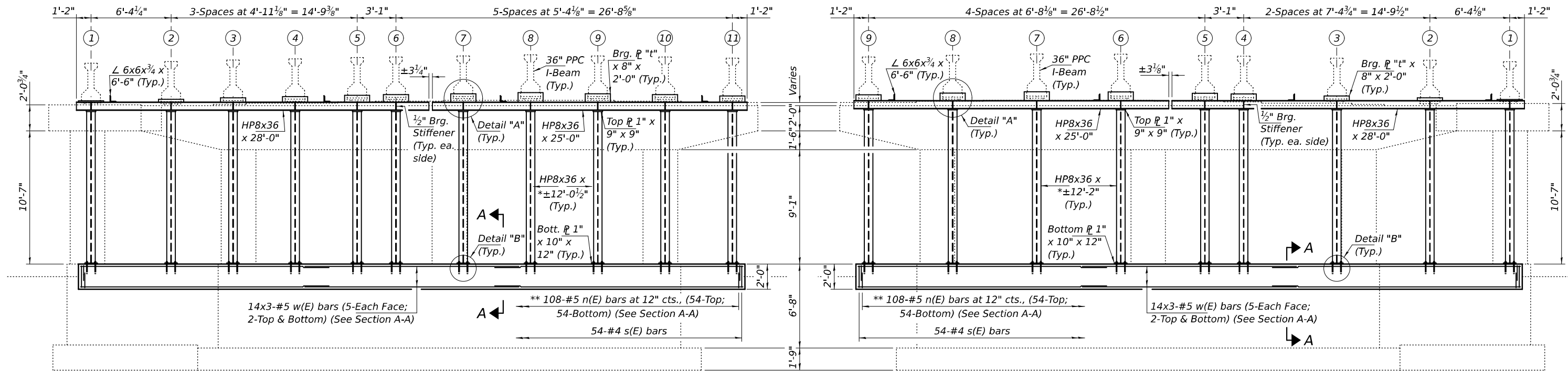
### GENERAL NOTES

- All structural steel shall conform to AASHTO Classification M-270 Gr. 36, unless otherwise noted.
- Plan dimensions and details relative to the existing structure have been taken from existing plans and are subject to nominal construction variations. The Contractor shall field verify existing dimensions and details affecting new construction and make necessary approved adjustments prior to construction or ordering of materials. Such variations shall not be cause for additional compensation for a change in scope of the work, however, the Contractor will be paid for the quantity actually furnished at the unit price bid for the work.
- All structural steel shall be shop painted with the inorganic zinc rich primer per AASHTO M300, Type 1. Cost included with Furnishing & Erecting Structural Steel.
- Reinforcement bars designated (E) shall be epoxy coated.
- Epoxy grout n(E) bars in 9" min. holes according to Art. 584 of the Standard Specifications.

### TOTAL BILL OF MATERIAL

ITEM	UNIT	QUANTITY
Concrete Structures	Cu. Yd.	31.6
Reinforcement Bars, Epoxy Coated	Pound	5500
3/4"Ø Anchor Bolts	Each	160
Furnishing & Erecting Structural Steel	Pound	41800

MODEL: 62Y04-016  
FILE NAME: pw:///idiot-pw/bentley.com:FWIDOT/Documents/IDOT O ces/Bureau of Bridges and Structures/IDOT Projects/0160511/CADDData/Structures/0160511.dgn  
5/6/2025 9:44:33 AM

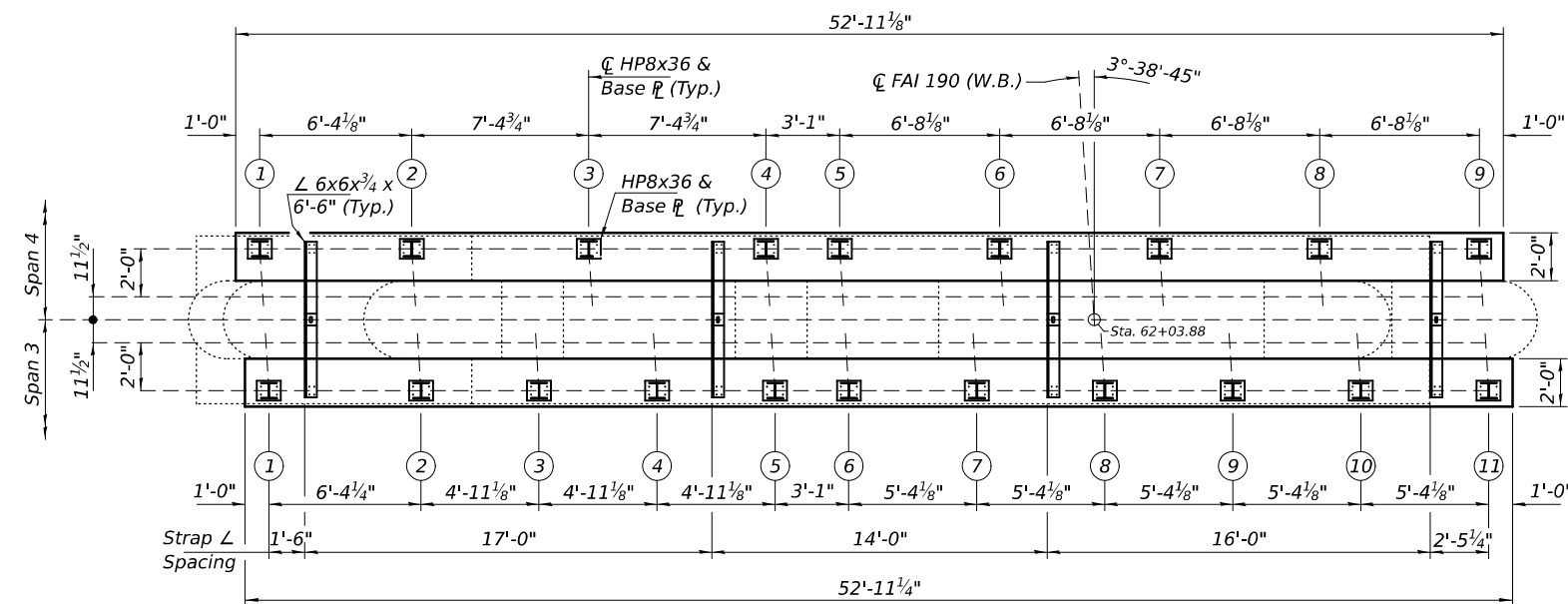


PIER 3 (W.B.) - WEST FACE (SPAN 3)  
(Looking East)

PIER 3 (W.B.) - EAST FACE (SPAN 4)  
(Looking West)

\* Actual height of HP8x36's to be field verified prior to fabrication.

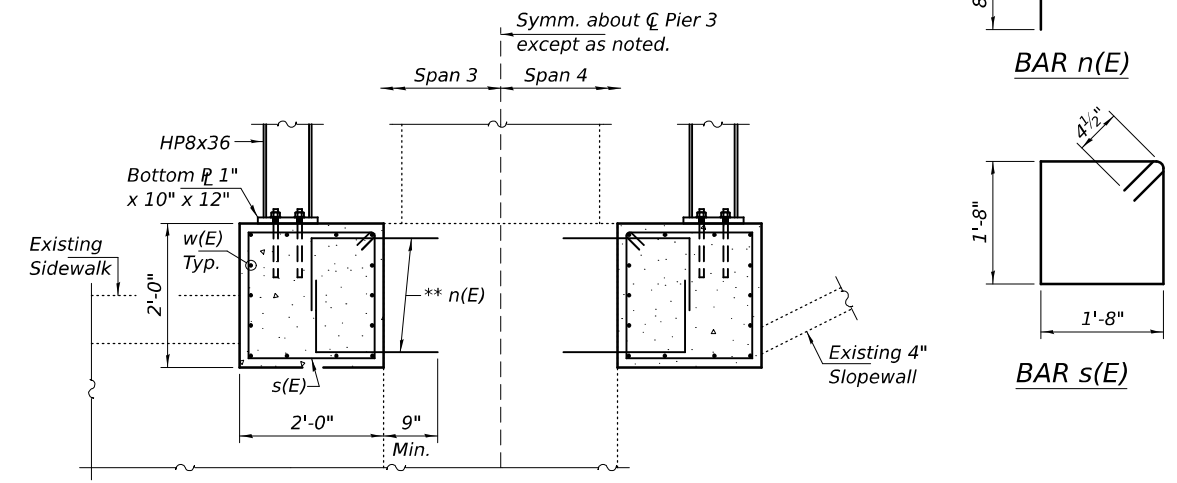
\*\* Epoxy grout n(E) bars into 9" min. holes according to Article 584 of the Standard Specifications.



PIER 3 (W.B.) - PLAN VIEW  
HP8x36 Caps & Brg.  $\bar{r}$ 's not shown for clarity.

TABLE OF BEARING PLATE THICKNESS (DIM. "t")

SPAN	BEAM & SUPPORT COLUMN NUMBER										
	1	2	3	4	5	6	7	8	9	10	11
3	1"	2 1/2"	4"	5 1/8"	6 3/8"	7"	7 7/8"	8 7/8"	7 7/8"	7"	5 3/4"
4	1"	2 1/2"	4 1/4"	6 1/4"	6 7/8"	8 1/8"	8 1/4"	7 1/8"	5 1/2"		



SECTION A-A  
Space top w(E) bars to miss 3/4"  $\bar{O}$  Anchor Bolts.

BILL OF MATERIAL (W.B.)

Bar	No.	Size	Length	Shape
n(E)	216	#5	2'-2"	
s(E)	108	#4	7'-5"	
w(E)	84	#5	19'-8"	
Concrete Structures			Cu. Yd.	15.7
Furnishing & Erecting Structural Steel			Pound	20840
3/4" $\bar{O}$ Anchor Bolts			Each	80
Reinforcement Bars, Epoxy Coated			Pound	2740

Bars indicated thus 1 x 2-#5 etc. indicates 1 line of bars with 2 lengths per line.

Notes:  
HP8x36 dimensions and Bearing  $\bar{r}$  thickness to be field verified prior to fabrication.  
For Details "A" & "B", see sheet 4 of 4.  
For Strap  $\bar{L}$  Details, see sheet 4 of 4.

MINIMUM BAR LAP  
#5 Bars = 3'-0"

DESIGNED - JSB  
CHECKED - VHV  
DRAWN - STEFFEN  
CHECKED - JSB VHV

EXAMINED  
PASSED  
ENGINEER OF STRUCTURAL SERVICES  
ENGINEER OF BRIDGES AND STRUCTURES

DATE - MAY 6, 2025  
REVISED -  
REVISED -

STATE OF ILLINOIS  
DEPARTMENT OF TRANSPORTATION

REPAIR DETAILS  
SN 016-0512 (W.B.)

SHEET 2 OF 4 SHEETS

F.A.I. RTE. 190  
SECTION (1293-BR) BR 25  
COUNTY COOK  
TOTAL SHEETS 24  
SHEET NO. 16  
CONTRACT NO. 62Y04  
ILLINOIS FED. AID PROJECT



MODEL: 62Y04-017  
FILE NAME: pw://idol-pw/bentley.com:FWIDOT/Documents/IDOT O ces/Bureau of Bridges and Structures/IDOT O ces/0160511/CADDData/Structures/0160511.dgn

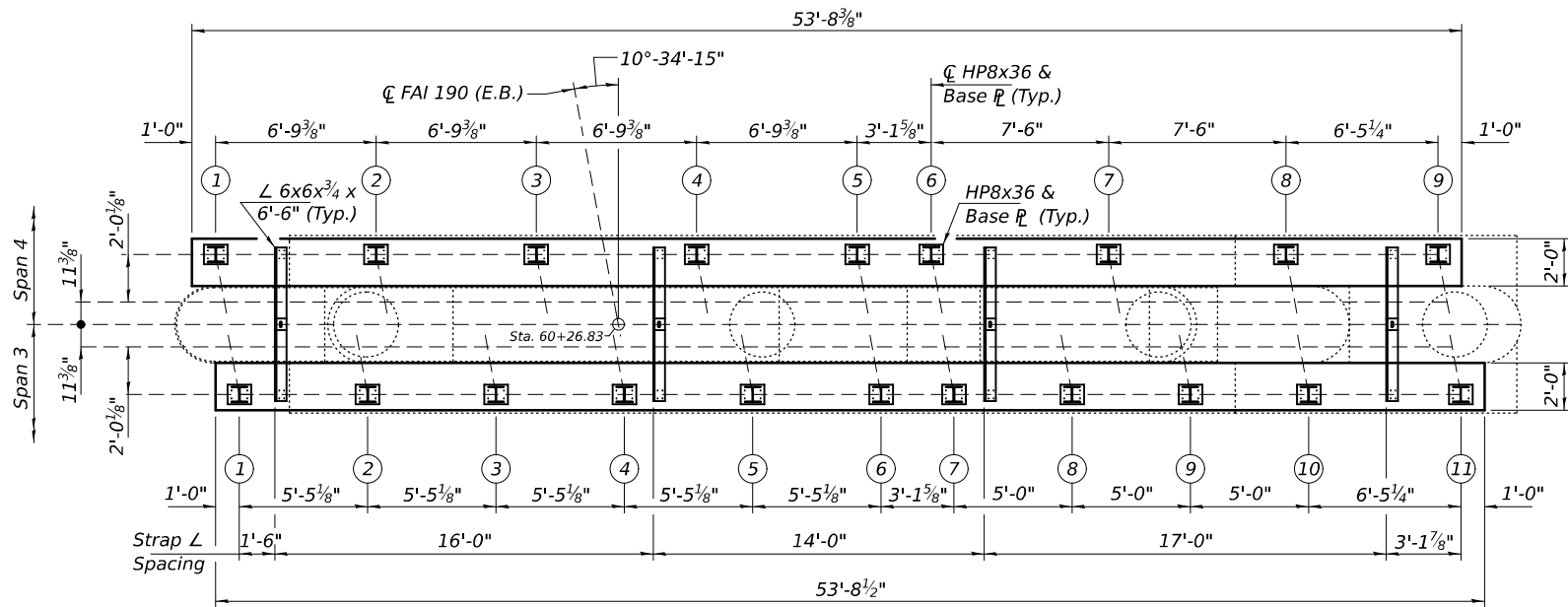
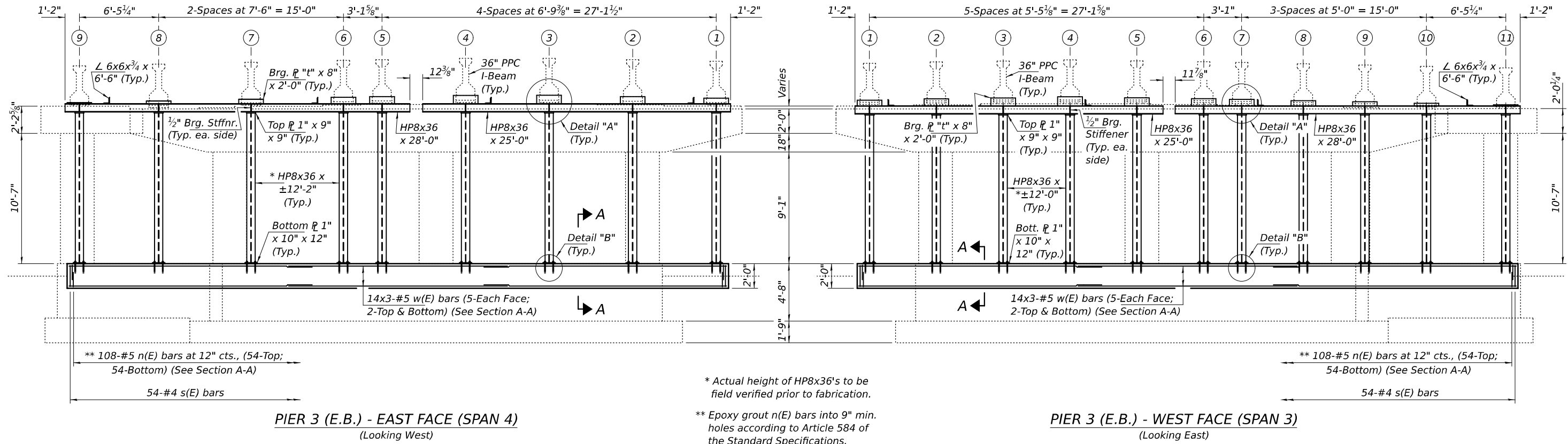


TABLE OF BEARING PLATE THICKNESS (DIM. "t")

SPAN	BEAM & SUPPORT COLUMN NUMBER										
	1	2	3	4	5	6	7	8	9	10	11
3	5 $\frac{3}{8}$ "	6 $\frac{3}{4}$ "	7 $\frac{5}{8}$ "	8 $\frac{3}{4}$ "	7 $\frac{3}{4}$ "	6 $\frac{7}{8}$ "	6 $\frac{1}{4}$ "	5"	3 $\frac{7}{8}$ "	2 $\frac{1}{2}$ "	1"
4	5 $\frac{3}{8}$ "	7"	8 $\frac{1}{4}$ "	8 $\frac{3}{8}$ "	7"	6 $\frac{1}{4}$ "	4 $\frac{3}{8}$ "	2 $\frac{5}{8}$ "	1"		

Notes:  
HP8x36 dimensions and Bearing  $\ell$  thickness to be field verified prior to fabrication.  
For Section A-A and Reinforcement Bending Diagrams, see sheet 2 of 4.  
For Details "A" & "B", see sheet 4 of 4.  
For Strap  $\angle$  Details, see sheet 4 of 4.

MINIMUM BAR LAP  
#5 Bars = 3'-0"

BILL OF MATERIAL (E.B.)

Bar	No.	Size	Length	Shape
n(E)	216	#5	2'-2"	
s(E)	108	#4	7'-5"	
w(E)	84	#5	19'-10"	
Concrete Structures			Cu. Yd.	15.9
Furnishing & Erecting Structural Steel			Pound	20960
3/4" $\varnothing$ Anchor Bolts			Each	80
Reinforcement Bars, Epoxy Coated			Pound	2760

Bars indicated thus 1 x 2-#5 etc. indicates 1 line of bars with 2 lengths per line.

DESIGNED - JSB  
CHECKED - VHV  
DRAWN - STEFFEN  
CHECKED - JSB VHV  
5/6/2025 9:44:36 AM

EXAMINED  
PASSED  
ENGINEER OF STRUCTURAL SERVICES  
ENGINEER OF BRIDGES AND STRUCTURES

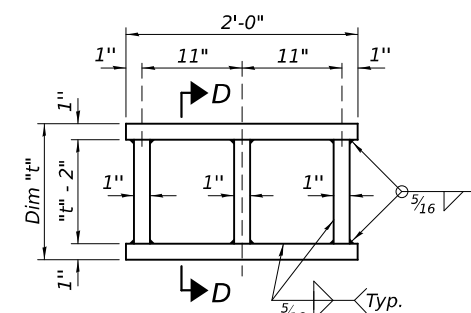
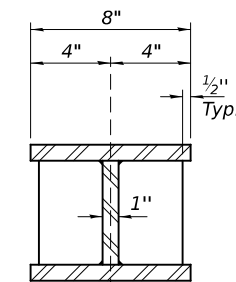
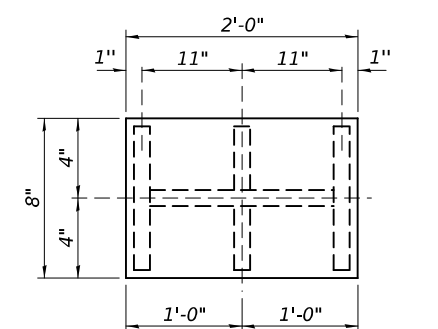
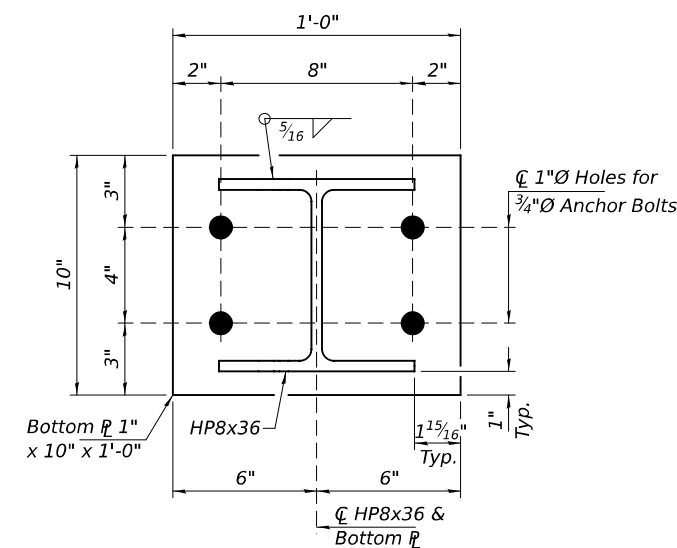
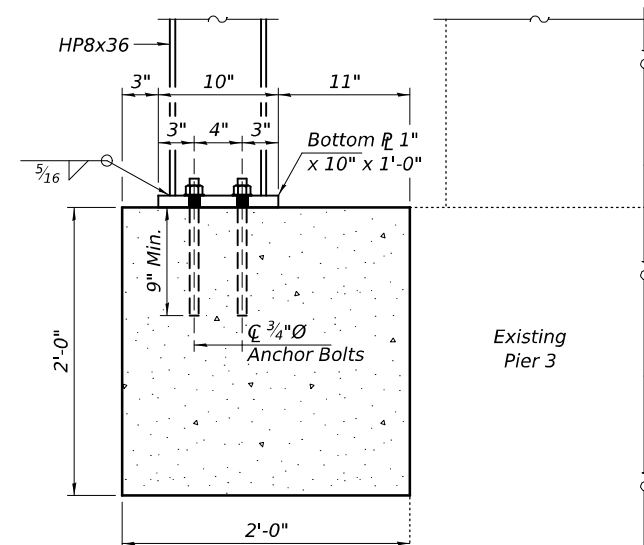
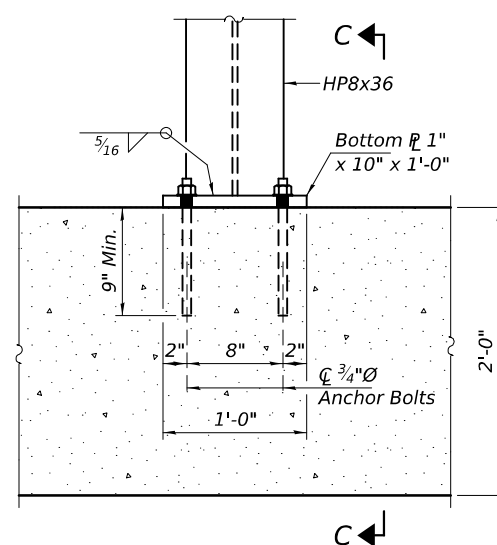
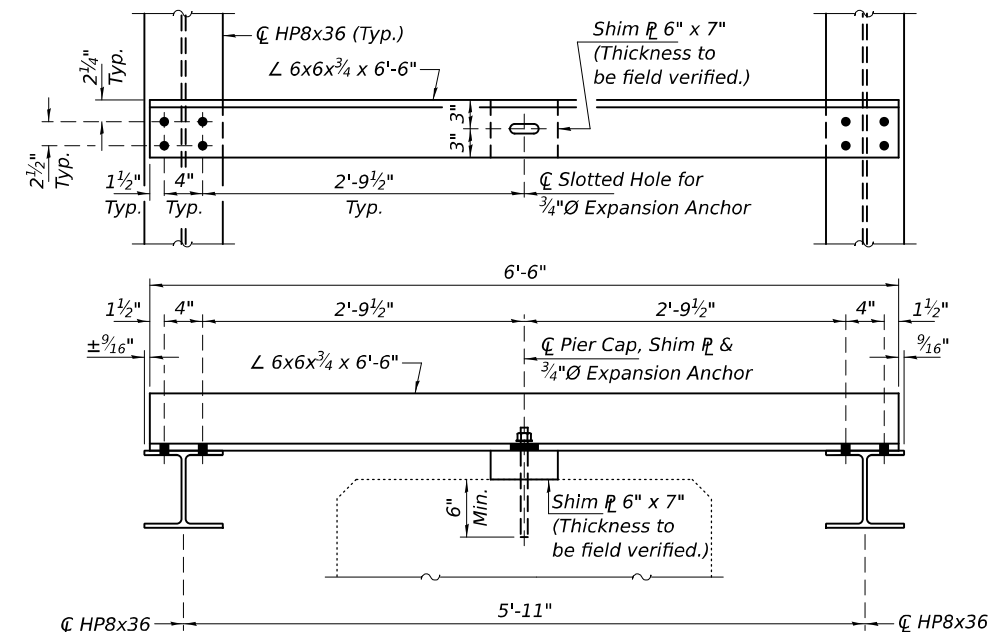
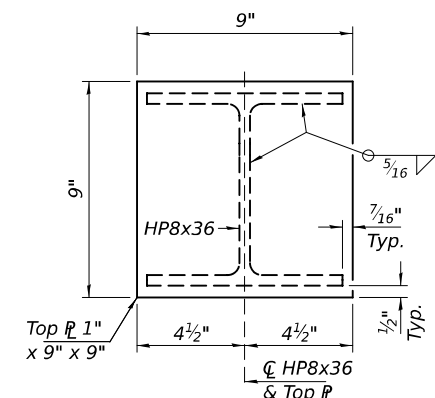
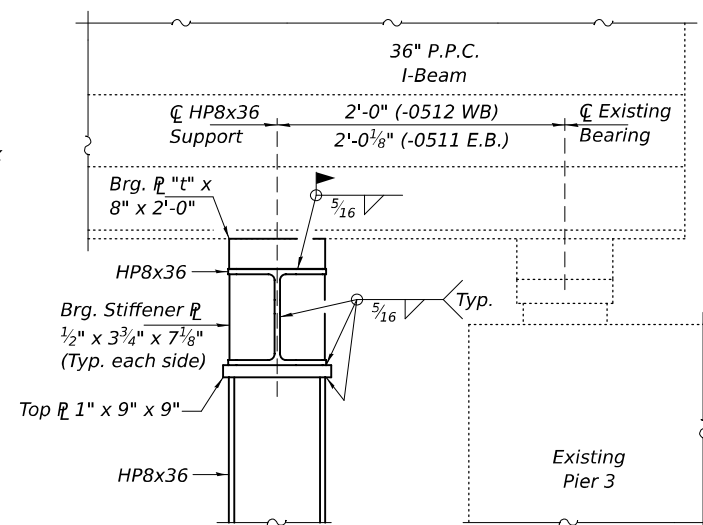
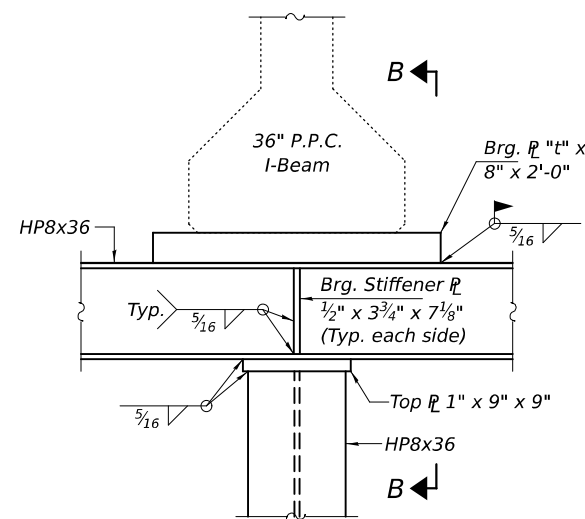
DATE - MAY 6, 2025  
REVISED -  
REVISED -

STATE OF ILLINOIS  
DEPARTMENT OF TRANSPORTATION

REPAIR DETAILS  
SN 016-0511 (E.B.)

SHEET 3 OF 4 SHEETS

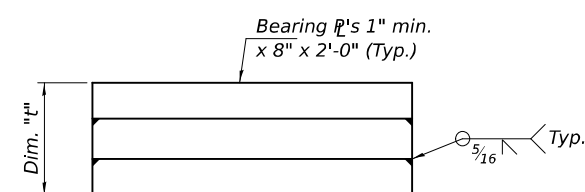
F.A.I. RTE.	SECTION	COUNTY	TOTAL SHEETS	SHEET NO.
190	(1293-BR) BR 25	COOK	24	17
CONTRACT NO. 62Y04				
ILLINOIS FED. AID PROJECT				



**STEEL EXTENSION DETAIL**  
Optional extension if Dim. "t" > 6".

TABLE OF BEARING PLATE THICKNESS (DIM. "t")

STRUCTURE	SPAN	BEAM & SUPPORT COLUMN NUMBER										
		1	2	3	4	5	6	7	8	9	10	11
016-0511 (E.B.)	3	5 $\frac{3}{8}$ "	6 $\frac{3}{4}$ "	7 $\frac{5}{8}$ "	8 $\frac{3}{4}$ "	7 $\frac{3}{4}$ "	6 $\frac{7}{8}$ "	6 $\frac{1}{4}$ "	5"	3 $\frac{7}{8}$ "	2 $\frac{1}{2}$ "	1"
	4	5 $\frac{3}{8}$ "	7"	8 $\frac{1}{4}$ "	8 $\frac{1}{2}$ "	7"	6 $\frac{1}{4}$ "	4 $\frac{3}{8}$ "	2 $\frac{3}{8}$ "	1"		
016-0512 (W.B.)	3	1"	2 $\frac{1}{2}$ "	4"	5 $\frac{8}{16}$ "	6 $\frac{7}{8}$ "	7"	7 $\frac{7}{8}$ "	8 $\frac{7}{8}$ "	7 $\frac{7}{8}$ "	7"	5 $\frac{3}{4}$ "
	4	1"	2 $\frac{1}{2}$ "	4 $\frac{1}{4}$ "	6 $\frac{1}{2}$ "	6 $\frac{7}{8}$ "	8 $\frac{1}{2}$ "	8 $\frac{1}{2}$ "	7 $\frac{1}{2}$ "	5 $\frac{1}{2}$ "		



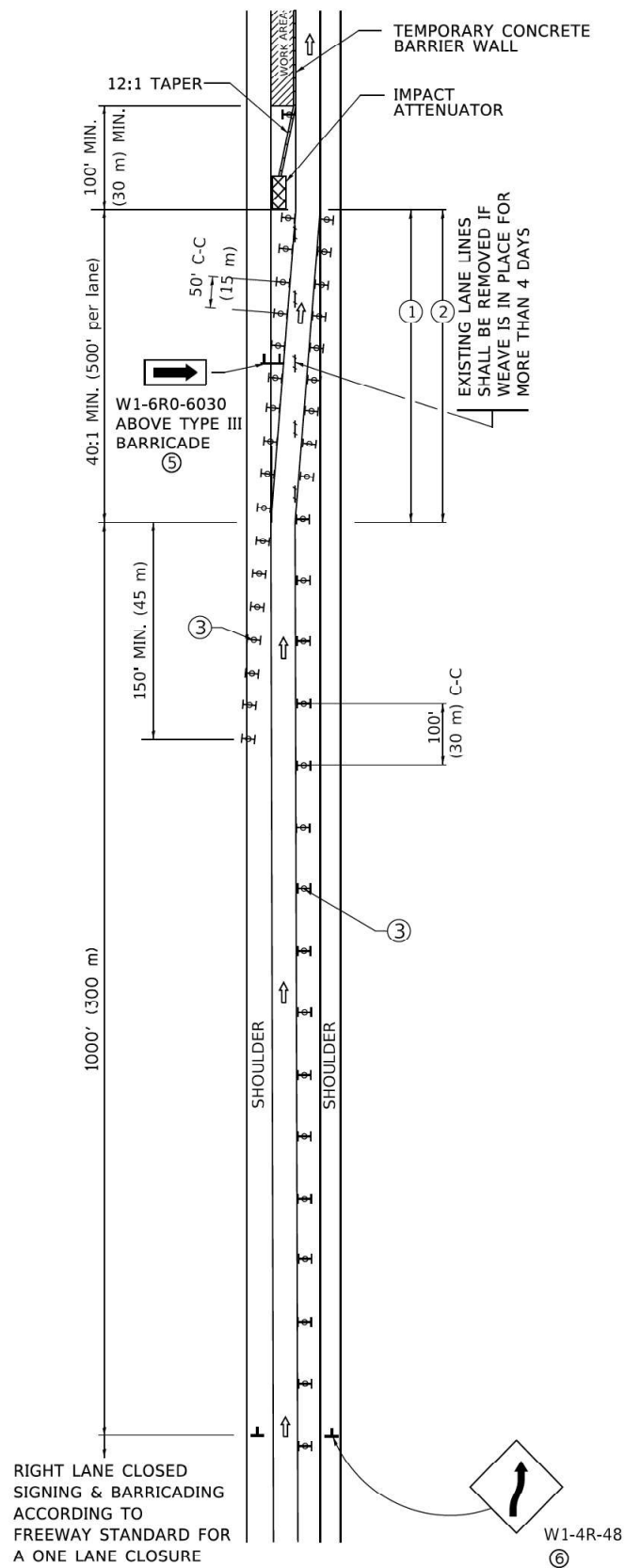
BEARING PLATE DETAIL

One or more  $R$ 's may be used. Number of individual  $R$ 's to be determined by fabricator. Minimum thickness of individual  $R$ 's shall be 1".

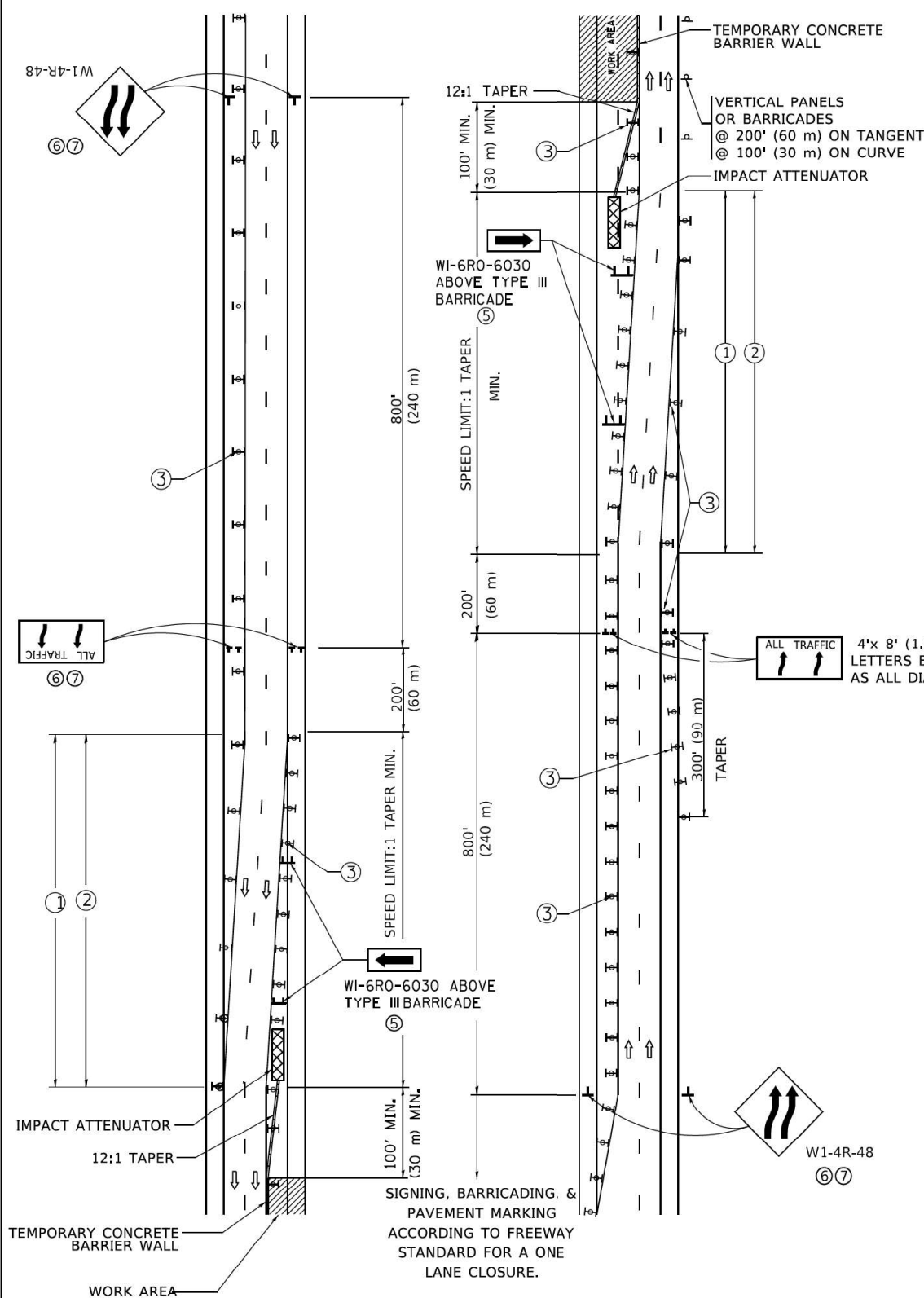




SINGLE LANE WEAVE



MULTI-LANE WEAVE



GENERAL NOTES:

- EXISTING CONFLICTING PAVEMENT MARKING LINES SHALL BE REMOVED. PAVEMENT MARKING REMOVAL SHALL NOT BE REQUIRED FOR SINGLE LANE WEAVES UNDER 4 DAYS IN DURATION.
- CONTINUOUS REFLECTIVE TEMPORARY PAVEMENT MARKING TAPE SHALL BE PLACED THROUGHOUT THE TAPER AND FOR 300' (90 m) ALONG SIDE THE WORK AREA WHERE THE CLOSURE TIME IS GREATER THAN FOURTEEN DAYS. THE LEFT EDGE LINE SHALL BE YELLOW AND THE RIGHT EDGE LINE SHALL BE WHITE. FOR MULTI-LANE WEAVES LANE LINES SHALL BE 5 INCH, 10'-30' (3 m-9 m) SKIP DASH, WHITE.
- PLASTIC DRUMS WITH STEADY BURN LIGHTS AT 50' (15 m) C-C SPACING IN TAPERS AND 100' (30 m) C-C SPACING IN TANGENTS.
- ALL SIGNS SHALL BE POST MOUNTED IF THE CLOSURE TIME EXCEEDS FOUR DAYS.
- TYPE III BARRICADES MAY BE OMITTED FOR SINGLE-LANE WEAVES UNDER 24-HOURS IN DURATION. W1-6 SIGNS WILL STILL BE REQUIRED. IF THE WIDTH OF OFFSET IS LESS THAN 6' THEN THE TYPE III BARRICADE WITH ATTACHED ARROW SIGN PANEL CAN BE ELIMINATED IN THE TAPER AREAS.
- WHEN THE LENGTH OF THE SHIFTED SEGMENT (DISTANCE BETWEEN WEAVE POINTS) IS LESS THAN 1500', DOUBLE REVERSE CURVE SIGNS (W24-1) SHOULD BE USED INSTEAD OF THE REVERSE CURVE (W1-4) SIGNS. ARROWS ON THE 4'X8' "ALL TRAFFIC" SIGNS SHALL BE THE SAME SHAPE.
- THE NUMBER OF ARROWS ON THESE SIGNS SHALL MATCH THE NUMBER OF LANES OPEN TO TRAFFIC.

SYMBOLS

- DIRECTION OF TRAFFIC
- WORK AREA
- SIGN ON PORTABLE OR PERMANENT SUPPORT
- TYPE II BARRICADE OR DRUM WITH MONO-DIRECTIONAL STEADY BURNING LIGHT
- TEMPORARY CONCRETE BARRIER WALL
- IMPACT ATTENUATOR
- W24-1-48

ALL DIMENSIONS ARE IN INCHES (MILLIMETERS) UNLESS OTHERWISE SHOWN

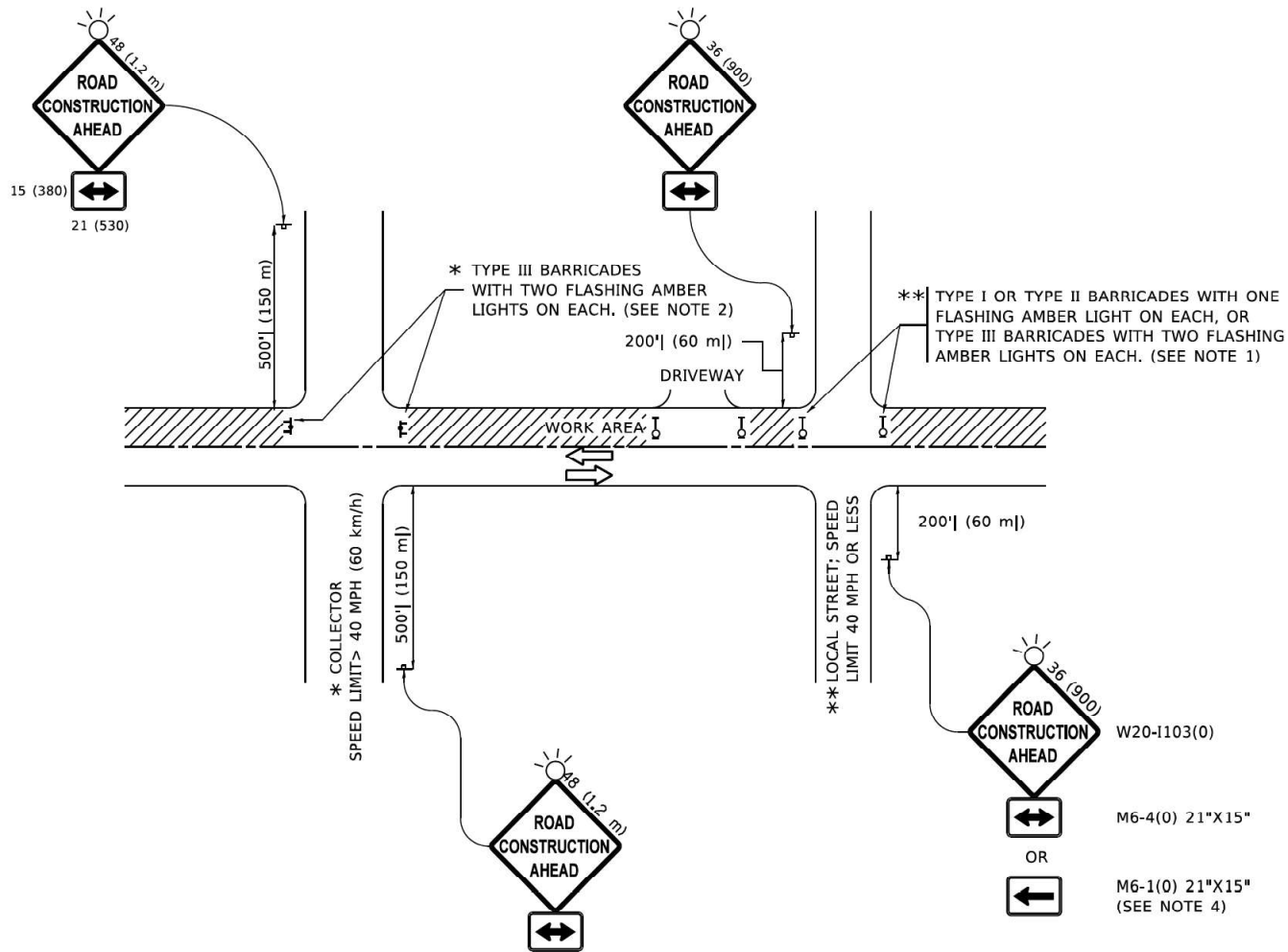
STATE OF ILLINOIS  
DEPARTMENT OF TRANSPORTATION

TRAFFIC CONTROL DETAILS FOR  
FREEWAY SINGLE & MULTI-LANE WEAVE

SCALE: NONE SHEET 1 OF 1 SHEETS STA. TO STA.

F.A. RTE.	SECTION	COUNTY	TOTAL SHEETS	SHEET NO.
	TC-09		24	20
		CONTRACT NO.		
		ILLINOIS FED. AID PROJECT		

MODEL: Default  
FILE: \\nw1c1pww.bentley.com\\p4\\VDO\\Documents\\DOT Office\\D\\hrlct\_1\\Projects\\DHS42133\\CAD\\D3a\\CAD\\sheet\\tc10.dgn



NOTES:

- SIDE ROAD WITH A SPEED LIMIT OF 40 MPH (60 km/h) OR LESS AS SHOWN ON THE DRAWING AND AS DIRECTED BY THE ENGINEER:
  - ONE "ROAD CONSTRUCTION AHEAD" SIGN 36 x 36 (900x900) WITH A FLASHER MOUNTED ON IT APPROXIMATELY 200' (60 m) IN ADVANCE OF THE MAIN ROUTE.
  - THE CLOSED PORTION OF THE MAIN ROUTE SHALL BE PROTECTED BY BLOCKING WITH TYPE I, TYPE II OR TYPE III BARRICADES, 1/3 OF THE CROSS SECTION OF THE CLOSED PORTION.
- SIDE ROAD WITH A SPEED LIMIT GREATER THAN 40 MPH (60 km/h) AS SHOWN ON THE DRAWING AND AS DIRECTED BY THE ENGINEER:
  - ONE "ROAD CONSTRUCTION AHEAD" SIGN 48 x 48 (1.2 m x 1.2 m) WITH A FLASHER MOUNTED ON IT APPROXIMATELY 500' (150 m) IN ADVANCE OF THE MAIN ROUTE.
  - THE CLOSED PORTION OF THE MAIN ROUTE SHALL BE PROTECTED BY BLOCKING WITH TYPE III BARRICADES, 1/2 OF THE CROSS SECTION OF THE CLOSED PORTION.
- CONES MAY BE SUBSTITUTED FOR BARRICADES OR DRUMS AT HALF THE SPACING DURING DAY OPERATIONS. CONES SHALL BE A MINIMUM OF 28 (710) IN HEIGHT.
- WHEN THE SIDE ROAD LIES BETWEEN THE BEGINNING OF THE MAINLINE
- SIGNING AND THE WORK ZONE, A SINGLE HEADED ARROW (M6-1) SHALL BE USED IN LIEU OF THE DOUBLE HEADED ARROW (M6-4).
- WHEN WORK IS BEING PERFORMED ON A SIDE ROAD OR DRIVEWAY, FOLLOW THE APPLICABLE STANDARD(S). THE DIRECTIONAL ARROW (M6-1 OR M6-4) SHALL BE COVERED OR REMOVED WHEN NO LONGER CONSISTENT WITH THE TRAFFIC CONTROL SET-UP.
- ADVANCE WARNING SIGNS ARE TO BE OMITTED ON DRIVEWAYS UNLESS OTHERWISE SPECIFIED IN THE PLANS OR BY THE ENGINEER.
- THE TRAFFIC CONTROL AND PROTECTION FOR SIDE ROADS, INTERSECTIONS, AND DRIVEWAYS SHALL BE INCLUDED IN THE COST OF SPECIFIED TRAFFIC CONTROL STANDARDS OR ITEMS.

All dimensions are in inches (millimeters)  
unless otherwise shown.

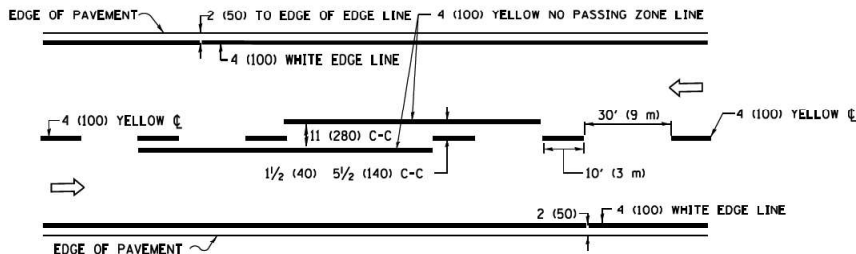
USER NAME	= Lawrence,DeManche	DESIGNED	- L.H.A.	REVISED	- T. RAMMACHER 01-06-00
DRAWN	-	DRAWN	-	REVISED	- A. SCHUETZE 07-01-13
PLOT SCALE	= 100.0000 ' / in.	CHECKED	-	REVISED	- A. SCHUETZE 09-15-16
PLOT DATE	= 5/3/2024	DATE	- 06-89	REVISED	- D. SENDERAK 05-03-24

STATE OF ILLINOIS  
DEPARTMENT OF TRANSPORTATION

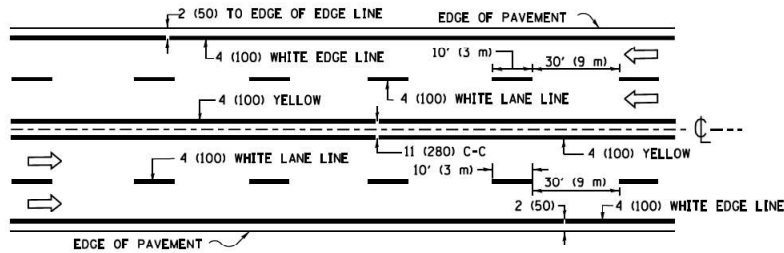
TRAFFIC CONTROL AND PROTECTION FOR  
SIDE ROADS, INTERSECTIONS, AND DRIVEWAYS

SCALE: NONE SHEET 1 OF 1 SHEETS STA. TO STA.

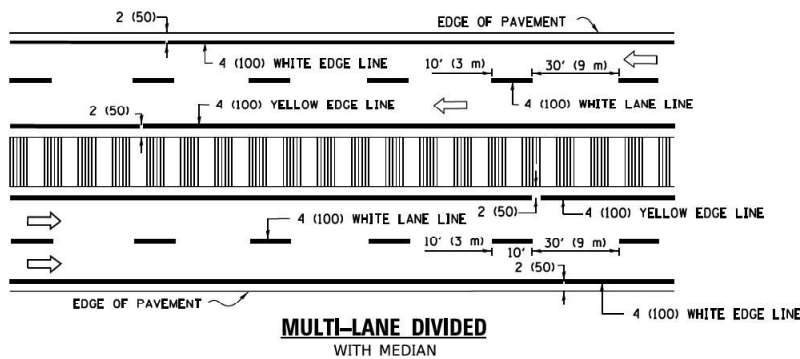
F.A. RTE.	SECTION	COUNTY	TOTAL SHEETS	SHEET NO.
			24	21
TC-10		CONTRACT NO.		
		ILLINOIS FED. AID PROJECT		



2-LANE ROADWAY

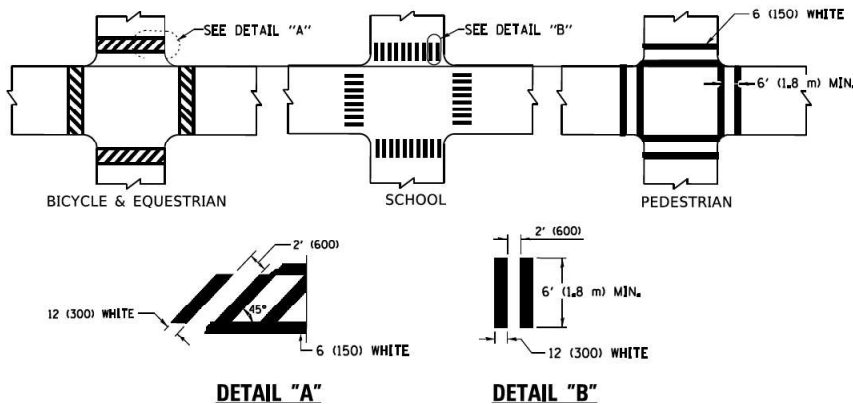


MULTI-LANE UNDIVIDED



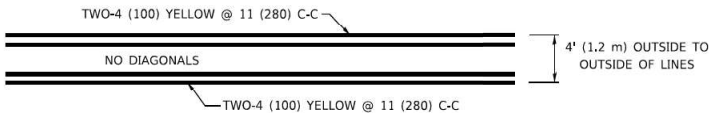
MULTI-LANE DIVIDED WITH MEDIAN

TYPICAL LANE AND EDGE LINE MARKING

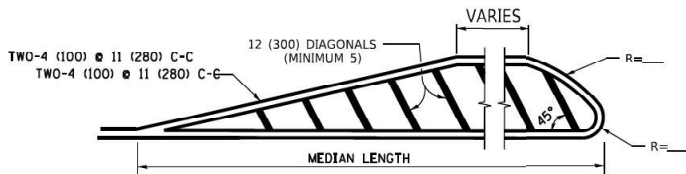


TYPICAL CROSSWALK MARKING

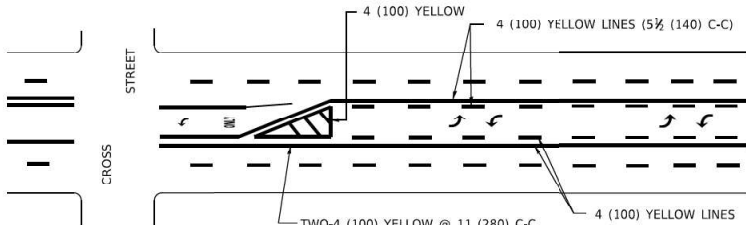
\* MARKINGS SHALL BE INSTALLED PARALLEL TO THE CENTERLINE OF THE ROAD WHICH IT CROSSES



4' (1.2 m) WIDE MEDIANS ONLY

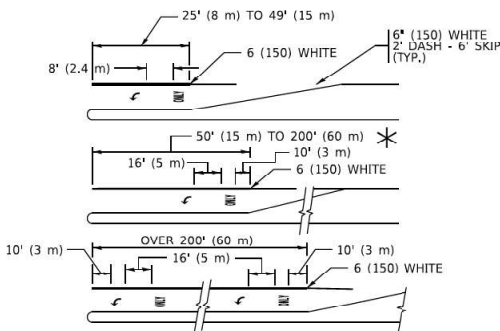


MEDIANS OVER 4' (1.2 m) WIDE



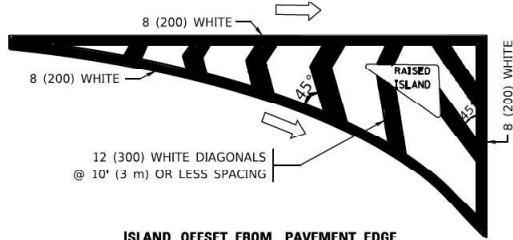
MEDIAN WITH TWO-WAY LEFT TURN LANE

TYPICAL PAINTED MEDIAN MARKING

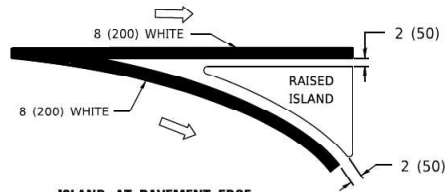


TYPICAL LEFT (OR RIGHT) TURN LANE

TYPICAL TURN LANE MARKING

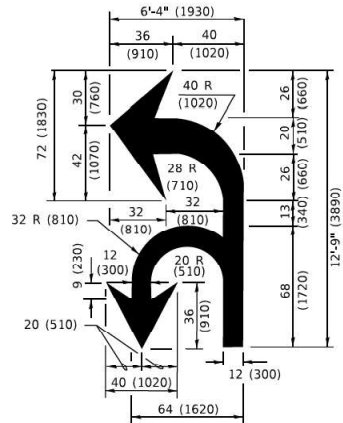


ISLAND OFFSET FROM PAVEMENT EDGE

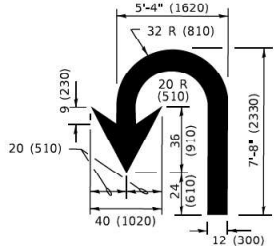


ISLAND AT PAVEMENT EDGE

TYPICAL ISLAND MARKING



COMBINATION LEFT AND U-TURN



U-TURN

LANE REDUCTION TRANSITION

\* LANE REDUCTION ARROWS REQUIRED AT SPEEDS OF 45 MPH OR GREATER OR WHEN SPECIFIED IN PLANS.

D(FT)	SPEED LIMIT
345	30
425	35
500	40
580	45
665	50
750	55

TYPE OF MARKING	WIDTH OF LINE	PATTERN	COLOR	SPACING / REMARKS
CENTERLINE ON 2 LANE PAVEMENT	4 (100)	SKIP-DASH	YELLOW	10' (3 m) LINE WITH 30' (9 m) SPACE
CENTERLINE ON MULTI-LANE UNDIVIDED PAVEMENT	2 @ 4 (100)	SOLID	YELLOW	11 (280) C-C
NO PASSING ZONE LINES: FOR ONE DIRECTION FOR BOTH DIRECTIONS	4 (100) 2 @ 4 (100)	SOLID SOLID	YELLOW YELLOW	5 1/2 (140) C-C FROM SKIP-DASH CENTERLINE 11 (280) C-C OMIT SKIP-DASH CENTERLINE BETWEEN
LANE LINES	4 (100) 5 (125) ON FREEWAYS	SKIP-DASH SKIP-DASH	WHITE WHITE	10' (3 m) LINE WITH 30' (9 m) SPACE
DOTTED LINES (EXTENSIONS OF CENTER, LANE OR TURN LANE MARKINGS)	SAME AS LINE BEING EXTENDED	SKIP-DASH	SAME AS LINE BEING EXTENDED	2' (600) LINE WITH 6' (1.8 m) SPACE
EDGE LINES	4 (100)	SOLID	YELLOW-LEFT WHITE-RIGHT	OUTLINE MEDIANS IN YELLOW
TURN LANE MARKINGS	6 (150) LINE; FULL SIZE LETTERS & SYMBOLS (8' (2.4m))	SOLID	WHITE	SEE TYPICAL TURN LANE MARKING DETAIL
TWO WAY LEFT TURN MARKING	2 @ 4 (100) EACH DIRECTION 8' (2.4m) LEFT ARROW	SKIP-DASH AND SOLID IN PAIRS	YELLOW WHITE	10' (3 m) LINE WITH 30' (9 m) SPACE FOR SKIP-DASH; 5 1/2 (140) C-C BETWEEN SOLID LINE AND SKIP-DASH LINE SEE TYPICAL TWO-WAY LEFT TURN MARKING DETAIL
CROSSWALK LINES (PEDESTRIAN) A. DIAGONALS (BIKE & EQUESTRIAN) B. LONGTUDINAL BARS (SCHOOL)	2 @ 6 (150) 12 (300) @ 45° 12 (300) @ 90°	SOLID SOLID SOLID	WHITE WHITE WHITE	NOT LESS THAN 6' (1.8 m) APART 2' (600) APART 2' (600) APART SEE TYPICAL CROSSWALK MARKING DETAILS.
STOP LINES	24 (600)	SOLID	WHITE	PLACE 4' (1.2 m) IN ADVANCE OF AND PARALLEL TO CROSSWALK, IF PRESENT. OTHERWISE, PLACE AT DESIRED STOPPING POINT. PARALLEL TO CROSSROAD CENTERLINE, WHERE POSSIBLE
PAINTED MEDIANS	2 @ 4 (100) WITH 12 (300) DIAGONALS @ 45° NO DIAGONALS USED FOR 4' (1.2 m) WIDE MEDIANS	SOLID	YELLOW: TWO WAY TRAFFIC WHITE: ONE WAY TRAFFIC	11 (280) C-C FOR THE DOUBLE LINE SEE TYPICAL PAINTED MEDIAN MARKING.
GORE MARKING AND CHANNELIZING LINES	8 (200) WITH 12 (300) DIAGONALS @ 45°	SOLID	WHITE	DIAGONALS: 15' (4.5 m) C-C (LESS THAN 30MPH (50 km/h)) 20' (6 m) C-C 30MPH (50 km/h) TO 45MPH (70 km/h) 30' (9 m) C-C (OVER 45MPH (70 km/h))
RAILROAD CROSSING	24 (600) TRANSVERSE LINES: "X" IS 8' (1.8 m) LETTERS: 16 (400) LINE FOR "X"	SOLID	WHITE	SEE STATE STANDARD 780001 AREA OF: *R*=3.6 SQ. FT. (0.33 m²) EACH *X*=54.0 SQ. FT. (5.0 m²)
SHOULDER DIAGONALS (REQUIRED FOR SHOULDERS ≥ 8')	12 (300) @ 45°	SOLID	WHITE - RIGHT YELLOW - LEFT	50' (15 m) C-C (LESS THAN 30MPH (50 km/h)) 75' (25 m) C-C 30 MPH (50 km/h) TO 45MPH (70 km/h) 150' (45 m) C-C (OVER 45MPH (70 km/h))
U TURN ARROW	SEE DETAIL	SOLID	WHITE	16.3 SF
2 ARROW COMBINATION LEFT AND U TURN	SEE DETAIL	SOLID	WHITE	30.4 SF

FOR FURTHER DETAILS ON PAVEMENT MARKING REFER TO STANDARD SPECIFICATIONS FOR ROAD AND BRIDGE CONSTRUCTION AND STATE STANDARD 780001.

All dimensions are in inches (millimeters) unless otherwise shown.

MODEL: Default  
FILE NAME: pav1110848EBIDNITEG.Illinois.gov21WDOTDocuments\DOT\_Offices\District\_1\Projects\DIUS427231\CAD\Drawings\TC13.dgn  
k13.dgn 3/4/2019 10:34:37 AM User:foomoo

USER NAME = [foomoo]	DESIGNED - EVERS	REVISED - C. JUCIUS 09-09-09
	DRAWN -	REVISED - C. JUCIUS 07-01-13
PLOT SCALE = 50,0000 1' = in.	CHECKED -	REVISED - C. JUCIUS 12-21-15
PLOT DATE = 3/4/2019	DATE - 03-19-90	REVISED - C. JUCIUS 04-12-16

STATE OF ILLINOIS  
DEPARTMENT OF TRANSPORTATION

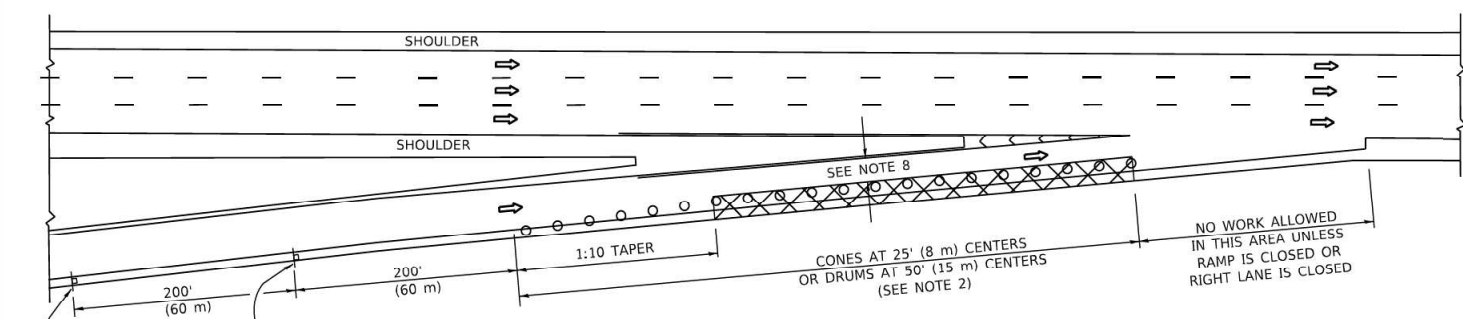
DISTRICT ONE  
TYPICAL PAVEMENT MARKINGS

SCALE: NONE SHEET 1 OF 2 SHEETS STA. TO STA.

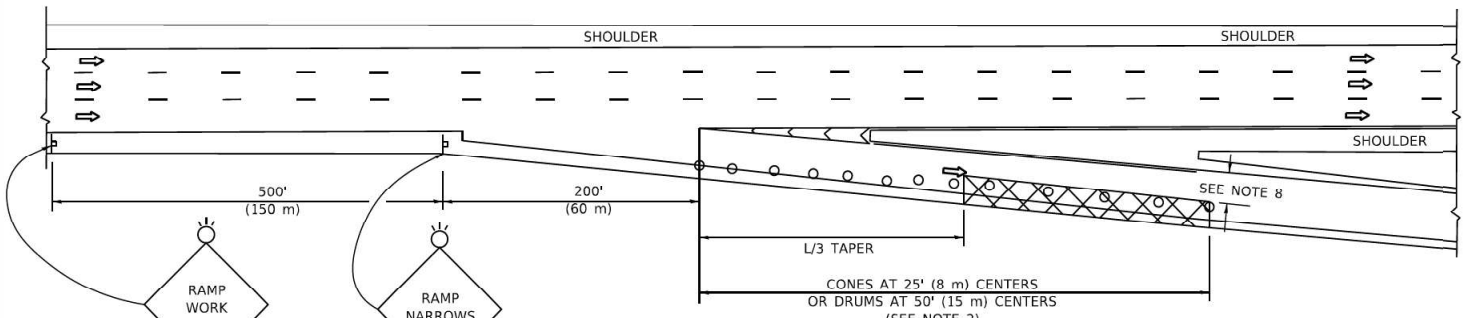
F.A. RTE.	SECTION	COUNTY	TOTAL SHEETS	SHEET NO.
			24	22
TC-13			CONTRACT NO.	
ILLINOIS			FED. AID PROJECT	

PARTIAL RAMP CLOSURE DETAILS

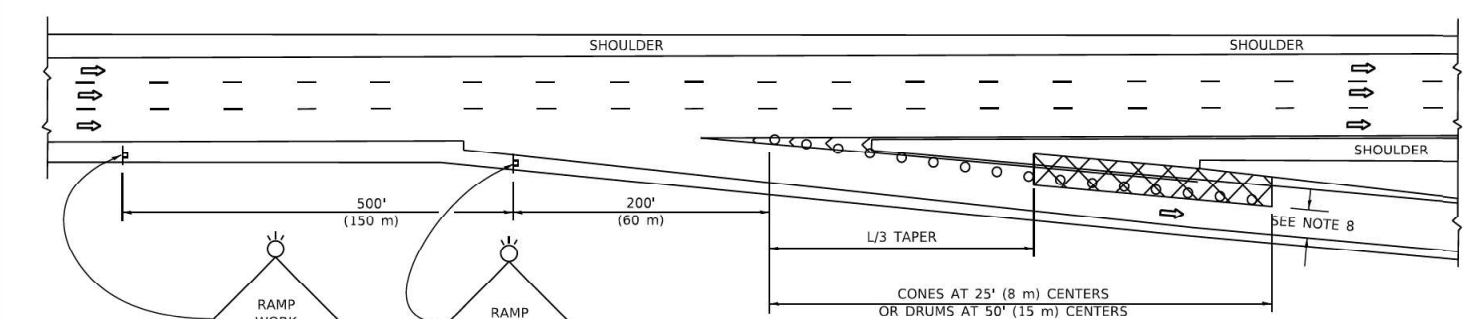
SHOULDER CLOSURE DETAILS



TYPICAL ENTRANCE RAMP



TYPICAL EXIT RAMP



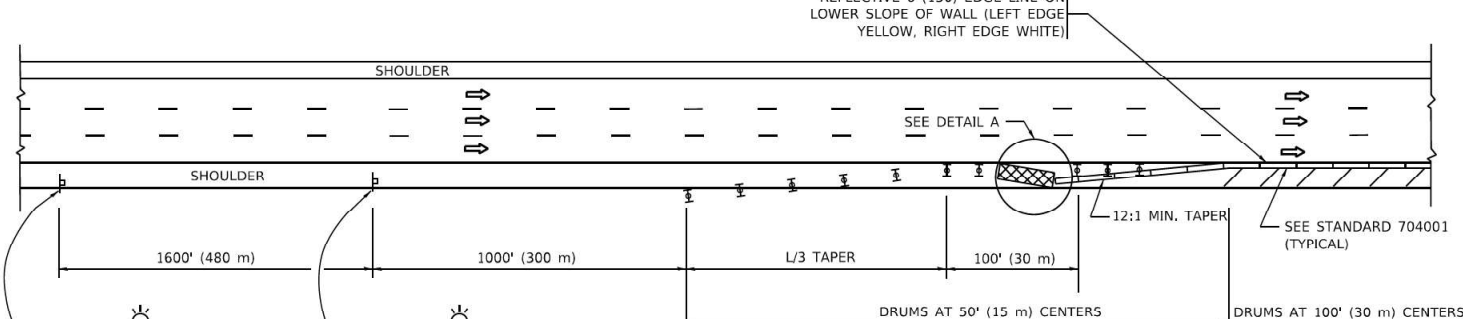
TYPICAL EXIT RAMP

SYMBOLS

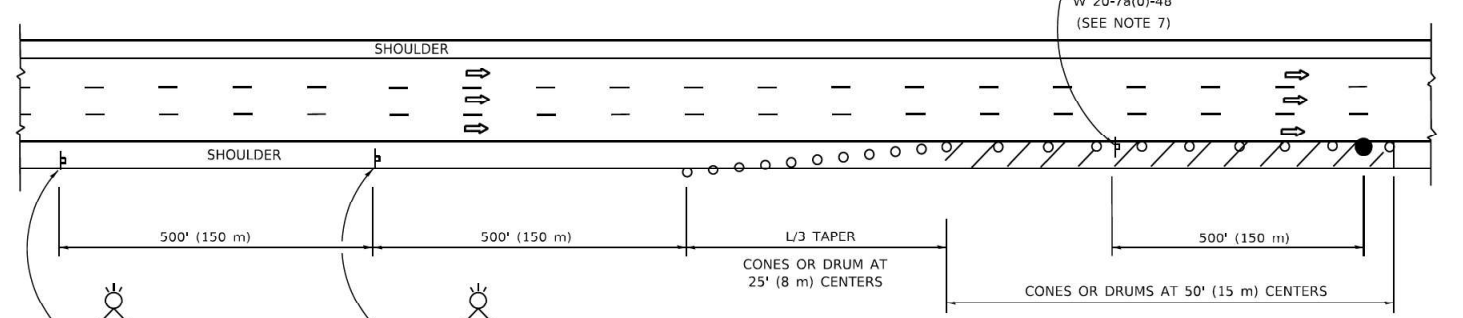
- ACTIVE WORK AREA
- SIGN ON PORTABLE OR PERMANENT SUPPORT
- FLAGGER WITH CONTROL SIGN
- TYPE II BARRICADE OR DRUM
- CONE, DRUM OR BARRICADE
- IMPACT ATTENUATOR OF TYPE AND TEST LEVEL SPECIFIED

GENERAL NOTES:

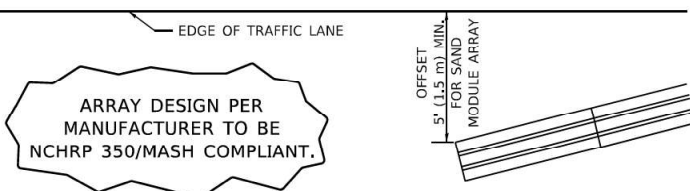
- THE "L" DISTANCE EQUALS:  
SPEED LIMIT  
45 mph (80 km/h)  
OR GREATER:  
W = WIDTH OF OFFSET IN FEET (METERS)  
S = NORMAL POSTED SPEED MPH (KM/H)  
FORMULAS  
METRIC ENGLISH  
 $L = 0.65(W)(S)$   $L = (W)(S)$
- TYPE II BARRICADES OR DRUMS ARE REQUIRED FOR ALL NIGHTTIME CLOSURES. TYPE II BARRICADES OR DRUMS WITH MONODIRECTIONAL STEADY BURN LIGHTS ARE REQUIRED FOR DELINEATING OBSTACLES, EXCAVATIONS, OR HAZARDS EXCEEDING 100 FT (30m) IN LENGTH AT NIGHT.
- ALL SIGNS SHALL BE POST MOUNTED IF THE CLOSURE TIME EXCEEDS FOUR DAYS.
- FLASHING LIGHTS SHALL BE USED DURING THE HOURS OF DARKNESS AND SHALL BE INSTALLED ABOVE THE FIRST TWO SETS OF SIGNS.



PERMANENT SHOULDER CLOSURE



TEMPORARY SHOULDER CLOSURE



DETAIL "A"  
IMPACT ATTENUATOR, TEMPORARY  
(SEE NOTE 5)

- THE IMPACT ATTENUATOR, TEMPORARY IS NOT REQUIRED WHEN THE TEMPORARY CONCRETE BARRIER WALL IS PROTECTED BY OR IS TIED INTO THE EXISTING GUARDRAIL. IF OFFSET IS LESS THAN 5 FEET USE NARROW USE TYPE DEVICE TO MEET NCHRP350/MASH.
- AUTHORIZATION FROM THE DISTRICT'S BUREAU OF TRAFFIC IS REQUIRED FOR ALL FREEWAY CLOSURES.
- THE FLAGGER AND FLAGGER SIGN ARE REQUIRED AT THE ABOVE WORK SITES WHEN:  
a. FOUR OR MORE WORK VEHICLES ENTER THE TRAFFIC LANES IN A ONE HOUR PERIOD.  
b. THE WORK ACTIVITY REQUIRES FREQUENT ENCROACHMENT INTO THE LANE OPEN TO TRAFFIC.  
THE FLAGGER SHALL BE STATIONED APPROXIMATELY 100' (30 m) TO 200' (60 m) IN ADVANCE OF THE WORKERS.

- 12' MIN. WIDTH TANGENT SECTION  
16' MIN. WIDTH CURVE SECTION.
- TEMPORARY SHOULDER AND NON-SYSTEM INTERCHANGE PARTIAL RAMP CLOSURES ARE ALLOWED WEEKDAYS BETWEEN 9:00 A.M. AND 3:00 P.M. AND BETWEEN 7:00 P.M. AND 5:00 A.M. OR AS APPROVED BY THE EXPRESSWAY TRAFFIC OPERATIONS ENGINEER. PERMANENT SHOULDER AND PARTIAL RAMP CLOSURES WILL ONLY BE PERMITTED IF CALLED FOR IN THE PLANS OR AS APPROVED BY THE EXPRESSWAY OPERATIONS ENGINEER.

ALL DIMENSIONS ARE IN INCHES (MILLIMETERS) UNLESS OTHERWISE SHOWN.

STATE OF ILLINOIS  
DEPARTMENT OF TRANSPORTATION

TRAFFIC CONTROL DETAILS FOR FREEWAY  
SHOULDER CLOSURES AND PARTIAL RAMP CLOSURES

SCALE: NONE SHEET 1 OF 1 SHEETS STA. TO STA.

F.A. RTE.	SECTION	COUNTY	TOTAL SHEETS	SHEET NO.
			24	23
TC-17		CONTRACT NO.		
	ILLINOIS	FED. AID PROJECT		



