

INDEX OF SHEETS

1	COVER SHEET
2	INDEX OF DRAWINGS, HIGHWAY STANDARDS, GENERAL NOTES, AND COMMITMENTS
3-4	SUMMARY OF QUANTITIES
5	TYPICAL SECTIONS
6	SCHEDULE OF QUANTITIES
7-8	ALIGNMENT, TIES, AND BENCHMARKS
9	EXISTING STOCKPILE REMOVAL AND GRADING PLAN
10	SUGGESTED STAGES OF CONSTRUCTION AND TRAFFIC CONTROL PLAN - GENERAL NOTES AND NARRATIVE
11-13	SUGGESTED STAGES OF CONSTRUCTION AND TRAFFIC CONTROL PLAN
14	TEMPORARY EROSION CONTROL AND SEDIMENTATION PLAN
15	PERMANENT EROSION AND SEDIMENTATION CONTROL PLAN
16-21	UTILITY LOCATION PLANS (SUE)
22-25	DISTRICT 1 DETAILS
26-37	CROSS SECTIONS

HIGHWAY STANDARDS

000001-08	STANDARD SYMBOLS, ABBREVIATIONS AND PATTERNS
001006	DECIMAL OF AN INCH AND OF A FOOT
280001-07	TEMPORARY EROSION CONTROL SYSTEMS
542401-04	METAL FLARED END SECTION FOR PIPE CULVERTS
701106-02	OFF-ROAD OPERATIONS, MULTILANE, MORE THAN 15' (4.5 M) AWAY
701422-10	LANE CLOSURE, MULTILANE, FOR SPEEDS ≥ 45 MPH TO 55 MPH
701426-09	LANE CLOSURE, MULTILANE, INTERMITTENT OR MOVING OPER., FOR SPEED ≥ 45 MPH
701427-05	LANE CLOSURE, MULTILANE, INTERMITTENT OR MOVING OPER., FOR SPEED ≤ 40 MPH
701901-10	TRAFFIC CONTROL DEVICES
720001-01	SIGN PANEL MOUNTING DETAILS
720006-04	SIGN PANEL ERECTION DETAILS

DISTRICT 1 STANDARDS

TC-12	MULTI-LANE FREEWAY PAVEMENT MARKING DETAILS
TC-17	TRAFFIC CONTROL DETAILS FOR FREEWAY SHOULDER CLOSURES AND PARTIAL RAMP CLOSURES
TC-18	FREEWAY/EXPRESSWAY SIGNING FOR FLAGGING OPERATIONS AT WORK ZONE OPENINGS ON FREEWAYS/EXPRESSWAYS

GENERAL NOTES

- ALL ELEVATIONS IN THE PLANS ARE BASED UPON THE NORTH AMERICAN VERTICAL DATUM OF 1988 (NAVD88).
- A MINIMUM OF SEVENTY-TWO (72) HOURS BEFORE STARTING EXCAVATION, THE CONTRACTOR SHALL CALL DIGGER (CHICAGO UTILITY ALERT NETWORK) AT (312) 744-7000 TO HAVE THE LOCATION OF EXISTING UNDERGROUND UTILITIES MARKED IN THE FIELD.
- A MINIMUM OF SEVENTY-TWO (72) HOURS PRIOR TO ANY PLACEMENT OR RELOCATION OF MAINTENANCE OF TRAFFIC DEVICES, THE CONTRACTOR SHALL CONTACT ILLINOIS DEPARTMENT OF TRANSPORTATION (IDOT) DISTRICT 1 BUREAU OF TRAFFIC AT (847) 705-4151.
- THE CONTRACTOR MUST CALL THE IDOT ELECTRICAL MAINTENANCE CONTRACTOR TO LOCATE IDOT FACILITY CABLES.
- PLAN DIMENSIONS AND DETAILS RELATIVE TO EXISTING PLANS ARE SUBJECT TO ROUTINE VARIATIONS. THE CONTRACTOR SHALL FIELD VERIFY EXISTING DIMENSIONS AND DETAILS AFFECTING NEW CONSTRUCTION AND MAKE NECESSARY APPROVED ADJUSTMENTS PRIOR TO CONSTRUCTION OR ORDERI NG OF MATERIALS. SUCH VARIATIONS SHALL NOT BE CAUSE FOR ADDITIONAL COMPENSATION FOR A CHANGE IN THE SCOPE OF THE WORK, HOWEVER, THE CONTRACTOR WILL BE PAID FOR THE QUANTITY ACTUALLY FURNISHED BASED UPON THE UNIT PRICE BID FOR THE WORK.
- ALL ROADWAY WIDTHS AND RADII SHOWN ON THE PLANS ARE TO THE EDGE OF PAVEMENT UNLESS OTHERWISE NOTED.
- EXCEPT WHERE DESIGNATED OTHERWISE, THE LOCATIONS AND/OR DEPTHS OF UNDERGROUND UTILITIES SHOWN HAVE BEEN TAKEN FROM OFFICE RECORD INFORMATION FURNISHED BY THE UTILITY OWNERS AND THE SUE SURVEYS. ALL UNDERGROUND UTILITIES MUST BE CONSIDERED APPROXIMATE. THE CONTRACTOR SHALL BE RESPONSIBLE FOR THE PROTECTION OF ALL UNDERGROUND OR SURFACE UTILITIES EVEN THOUGH THEY MAY NOT BE SHOWN IN THE PLANS. ANY UTILITY THAT IS DAMAGED DURING CONSTRUCTION SHALL BE REPAIRED OR REPLACED TO THE SATISFACTION OF THE ENGINEER. THIS WORK SHALL BE AT THE CONTRACTOR'S EXPENSE.
- DRAINAGE
  - THE OFFSETS AND TOP OF FRAME OR LID ELEVATIONS FOR MANHOLES, STRUCTURES IN GORE AREAS, AND STRUCTURES IN INFIELD AREAS ARE MEASURED TO THE CENTER OF THE STRUCTURE.
  - DRAINAGE GRADES SHALL BE VERIFIED IN FIELD PRIOR TO INSTALLATION OF DRAINAGE ITEMS.
- THE DEPARTMENT HAS NOT OBTAINED ANY PERMITS FOR OFFSITE BORROW, WASTE, USE (BWU) AREAS. PRIOR TO WORKING IN BWU AREAS, IF THE CONTRACTOR CHOOSES TO USE ACTIVITIES REQUIRING PERMITS, IT IS THE CONTRACTOR'S RESPONSIBILITY TO SECURE THE PROPER PERMITS. IN ADDITION TO THE BORROW SITE REVIEW (BDE 2289) AND USE/WASTE SITE REVIEW (BDE 2290) SUBMITTALS, THE CONTRACTOR WILL NEED TO SUBMIT AN EROSION AND SEDIMENT CONTROL (ESC) PLAN FOR EVERY BWU SITE TO THE DEPARTMENT FOR ACCEPTANCE. GUIDELINES FOR ACCEPTABLE BWU PRACTICES CAN BE FOUND IN PART IX OF THE SWPPP. THE COST OF ALL MATERIALS AND LABOR NECESSARY TO COMPLY WITH THE ABOVE PROVISIONS TO PREPARE AND IMPLEMENT ESC PLANS WILL NOT BE PAID FOR SEPARATELY, BUT SHALL BE CONSIDERED AS INCLUDED IN THE UNIT BID PRICES OF THE CONTRACT AND NO ADDITIONAL COMPENSATION WILL BE ALLOWED.
- IF ANY UNUSUAL MATERIALS ARE UNCOVERED OR THERE ARE SUSPICIONS OF EXISTING UNDERGROUND STORAGE TANKS, THE GENERAL CONTRACTOR IS REQUIRED TO HIRE AN ENVIRONMENTAL FIRM WITH AT LEAST FIVE (5) DOCUMENTED LEAKING UNDERGROUND STORAGE TANK (LUST) CLEANUPS OR THAT IS PREQUALIFIED IN HAZARDOUS WASTE BY THE DEPARTMENT TO REMEDIATE THE SOIL CONTAMINATION AND MONITOR FOR WORKER PROTECTION.
- BACKFILLING STORM SEWER CONSTRUCTED UNDER THE ROADWAY SPECIFIED UNDER ARTICLE 550.07 (B, C) OF THE SSRBC WILL NOT BE ALLOWED.
- THE CONTRACTOR SHALL COORDINATE WORK WITH UTILITIES IN ADVANCE OF WORKING IN THE VICINITY OF THEIR FACILITIES AND ALLOW SUFFICIENT TIME FOR THEM TO PERFORM ADJUSTMENTS TO THEIR FACILITIES IN ACCORDANCE WITH THE CONTRACTOR'S SCHEDULE. COORDINATION EFFORTS SHALL BE INCLUDED IN THE COST OF THE CONTRACT BID PRICE.
- THE CONTRACTOR WILL NOT BE ALLOWED TO SET UP A YARD OR FIELD OFFICE ON STATE PROPERTY WITHOUT WRITTEN PERMISSION FROM THE DEPARTMENT.
- THE ILLINOIS DEPARTMENT OF TRANSPORTATION DISTRICT 1 REGULATED SUBSTANCES UNIT (RSU) HAS PREPARED THE PRELIMINARY SITE INVESTIGATION REPORT (PSI) IN WHICH THE LABORATORY ANALYTICAL RESULTS INDICATED THE PRESENCE OF POLYFLUOROALKYL (PFA) CONTAMINANTS IN THE SOIL SAMPLES COLLECTED FROM THE SOIL STOCKPILE. SOILS CONTAINING PFAS ABOVE THRESHOLD VALUES MUST BE DISPOSED OF AT A LICENSED LANDFILL.

COMMITMENTS

- TREES THAT ARE THREE (3) INCHES OR GREATER IN DIAMETER AT BREAST HEIGHT SHALL NOT BE CLEARED FROM APRIL 1 THROUGH SEPTEMBER 30 TO AVOID ADVERSELY AFFECTLY THE INDIANA AND NORTHERN LONG-EARED BATS. TREES CAN BE TRIMMED AND CLEARED OF HAZARDS AT ANY TIME DUE TO SAFETY CONCERNS WITHIN THE RIGHT-OF-WAY.

EROSION CONTROL NOTES

- THE CONSTRUCTION LIMITS WILL BE STAKED AND APPROVED BY THE ENGINEER PRIOR TO COMMENCING CONSTRUCTION. THE CONSTRUCTION LIMITS MAY BE ADJUSTED BY THE ENGINEER TO PRESERVE TREES AND NO ADDITIONAL COMPENSATION WILL BE PAID TO THE CONTRACTOR FOR CHANGES IN CONSTRUCTION LIMITS.
- EROSION CONTROL ITEMS ARE CONSIDERED HIGH PRIORITY ITEMS IN THIS CONTRACT. THE CONTRACTOR WILL IMPLEMENT ALL PROVISIONS OF SPECIFICATION NECESSARY TO ASSURE THAT EROSION CONTROL ITEMS ARE CONSTRUCTED AND MAINTAINED IN A TIMELY MANNER. THE CONTRACTOR SHALL INSTALL TEMPORARY EROSION CONTROL MEASURES PRIOR TO THE START OF CONSTRUCTION OPERATIONS WHICH WILL POTENTIALLY CREATE ERODIBLE CONDITIONS. PLACEMENT AND MAINTENANCE OF TEMPORARY EROSION CONTROL SYSTEMS WILL BE UTILIZED THROUGHOUT THE CONSTRUCTION LIMITS.
- THE CONTRACTOR WILL ASSUME RESPONSIBILITY FOR MAINTENANCE OF ALL SOIL EROSION CONTROL DURING CONSTRUCTION.
- TEMPORARY EROSION CONTROL MEASURES SHALL BE CONSTRUCTED AS SHOWN ON THE PLANS AND AS DIRECTED BY THE ENGINEER. THE WORK SHALL BE COMPLETED IN ACCORDANCE WITH SECTION 280 OF THE STANDARD SPECIFICATIONS, CONTRACT SPECIAL PROVISIONS AND THE STORM WATER POLLUTION PREVENTION PLAN (SWPPP).
- ALL EROSION CONTROL MEASURES WILL BE MAINTAINED IN ACCORDANCE WITH THE IDOT EROSION AND SEDIMENT CONTROL FIELD GUIDE FOR CONSTRUCTION INSPECTION FOUND ON THE CONSTRUCTION TAB AT: <http://www.idot.illinois.gov/transportation-system/environment/erosion-and-sediment-control>.
- THE CONTRACTOR SHALL UTILIZE THE GENERAL MAINTENANCE GUIDELINES AS OUTLINED IN THE SWPPP TO ENSURE GOOD AND EFFECTIVE OPERATING CONDITION OF THE VEGETATION AND EROSION AND SEDIMENT CONTROL MEASURES.
- A COPY OF THE APPROVED EROSION AND SEDIMENT CONTROL PLAN SHALL BE MAINTAINED ON SITE. ALL CHANGES TO THE SOIL EROSION AND SEDIMENT CONTROL PLAN SHALL BE NOTED ON THE SITE.
- THE CONTRACTOR SHALL PERFORM ALL WORK AS DIRECTED BY THE ENGINEER AND AS SHOWN IN HIGHWAY STANDARD 280001.
- THE EROSION CONTROL MEASURES SHOWN ARE BUT A GRAPHICAL REPRESENTATION OF SUGGESTED MEASURES. DEVIATIONS FROM THIS PLAN ARE TO BE EXPECTED PENDING A JOBSITE INSPECTION BETWEEN THE CONTRACTOR AND THE DEPARTMENT.
- THE CONTRACTOR WILL BE REQUIRED TO IMPLEMENT AND MAINTAIN SEDIMENT CONTROL MEASURES PRIOR TO STRIPPING EXISTING VEGETATION.
- THE CONTRACTOR SHALL INSPECT ALL EROSION AND SEDIMENT CONTROL MEASURES WEEKLY AND AFTER EACH RAINFALL, 0.5 INCHES OR GREATER IN A 24 HOUR PERIOD, OR EQUIVALENT SNOWFALL. ADDITIONALLY, DURING WINTER MONTHS, ALL MEASURES SHOULD BE CHECKED AFTER EACH SIGNIFICANT SNOWMELT.
- ANY AREA WHERE THERE IS NO PROPOSED GRADING, THE EXISTING GROUND COVER SHALL REMAIN.
- TEMPORARY STOCKPILE LOCATIONS SHALL BE APPROVED BY THE ENGINEER AND WILL REQUIRE SILT FENCE AND TEMPORARY SEEDING.
- THE CONTRACTOR SHALL INSTALL AND MAINTAIN INLET FILTERS AT ALL EXISTING INLETS ADJACENT TO THE EDGE OF PAVEMENT PRIOR TO THE START OF PRE-STAGE WORK. THE INLET FILTERS SHALL BE MAINTAINED AT EACH SUBSEQUENT STAGE UNTIL NO LONGER REQUIRED OR AS DIRECTED BY THE ENGINEER.
- DURING CONSTRUCTION OPERATIONS, WHEN ANY LOOSE MATERIAL IS DEPOSITED IN THE FLOW LINE OF DITCHES, GUTTERS OR DRAINAGE STRUCTURES SO THAT THE NATURAL FLOW OF WATER IS OBSTRUCTED, THE MATERIAL SHALL BE REMOVED AT THE CLOSE OF EACH WORKING DAY.
- AT THE CONCLUSION OF CONSTRUCTION OPERATIONS, ALL DRAINAGE STRUCTURES SHALL BE FREE FROM DIRT AND DEBRIS. THE CONTRACTOR'S FAILURE TO PROVIDE THE ABOVE WILL PRECLUDE ANY POSSIBLE ADDED COMPENSATION REQUESTED DUE TO DELAYS OR UNSUITABLE MATERIAL CREATED AS A RESULT THEREOF.
- THE CONTRACTOR SHOULD PROVIDE TO THE RESIDENT ENGINEER A PLAN TO ENSURE THAT A STABILIZED FLOW LINE WILL BE PROVIDED DURING STORM SEWER CONSTRUCTION. THE USE OF A STABILIZED FLOW LINE BETWEEN INSTALLED STORM SEWER AND OPEN DISTURBANCE WILL REDUCE THE POTENTIAL FOR THE OFFSITE DISCHARGE OF SEDIMENT-BEARING WATERS, ESPECIALLY WHEN RAIN IS FORECASTED, SO THAT FLOW WILL NOT ERODE. LACK OF APPROVED PLAN OR FAILURE TO COMPLY WILL RESULT IN AN ESC DEFICIENCY DEDUCTION.
- ANY LOOSE MATERIAL DEPOSITED IN THE FLOW LINE OF DRAINAGE STRUCTURES, WHICH OBSTRUCTS THE NATURAL FLOW OF WATER, SHALL BE REMOVED AT THE CLOSE OF EACH WORKING DAY. PRIOR TO ACCEPTANCE OF THE IMPROVEMENT, ALL DRAINAGE STRUCTURES SHALL BE FREE OF DIRT AND DEBRIS. THIS WORK WILL NOT BE PAID FOR SEPARATELY BUT SHALL BE CONSIDERED AS INCIDENTAL.
- LOCATIONS OF THE STABILIZED CONSTRUCTION ENTRANCE/EXITS SHALL BE DETERMINED BY THE CONTRACTOR AND APPROVED BY THE ENGINEER. THE INSTALLATION OF THE CONSTRUCTION ENTRANCE/EXITS SHALL BE IN ACCORDANCE WITH THE ILLINOIS URBAN MANUAL OR AS DIRECTED BY THE ENGINEER.
- TEMPORARY OR PERMANENT STABILIZATION SHALL BE INSTALLED ON ALL AREAS DISTURBED DURING EACH STAGE OF CONSTRUCTION PRIOR TO SWITCHING TRAFFIC TO BEGIN THE SUBSEQUENT STAGE. ALSO, ALL EROSION CONTROL MEASURES PLACED DURING CONSTRUCTION SHALL REMAIN IN PLACE AND BE MAINTAINED UNTIL COMPLETION OF THE FINAL STAGE OF CONSTRUCTION OR WHEN NO LONGER REQUIRED.
- TEMPORARY OR PERMANENT STABILIZATION SHALL BE INITIATED IMMEDIATELY UPON COMPLETION OF DISTURBANCE OR IF THE WORK AREA IS TO BE LEFT UNDISTURBED FOR 14 DAYS OR MORE.
- UNDER NO CIRCUMSTANCES SHALL THE CONTRACTOR PROLONG FINAL GRADING AND SHAPING SO THAT THE ENTIRE PROJECT CAN BE PERMANENTLY SEEDDED AT ONE TIME.

1 REVISED SHEET 5/23/2025

MODEL: Default  
FILE: \\na\naecom\na-ow-bentley.com\AECOM\_DS19\_NA\Documents\6068563-1-190\B00-CAD\B10\_CAD\BWB-ADV\03\_SHEETS\Civil\0162795-SHT-Gennote-01.dgn



USER NAME = Chiua	DESIGNED - JN	REVISED - 5/23/2025
	DRAWN - JN	REVISED -
PLOT SCALE = 20.0000 ' / in.	CHECKED - MJE	REVISED -
PLOT DATE = 5/21/2025	DATE - 03/21/2025	REVISED -

STATE OF ILLINOIS  
DEPARTMENT OF TRANSPORTATION

INDEX, HIGHWAY STANDARDS, GENERAL NOTES, AND COMMITMENTS

SCALE: NONE SHEET 1 OF 1 SHEETS STA. TO STA.

F.A.I. RTE.	SECTION	COUNTY	TOTAL SHEETS	SHEET NO.
190	FAI 190 22 EW	COOK	37	2
CONTRACT NO. 62T95				
ILLINOIS FED. AID PROJECT				

				CONSTR. CODE
				100% STATE
CODE NO.	ITEM	UNIT	TOTAL	ROADWAY
			QUANTITY	0044
				URBAN
20200100	EARTH EXCAVATION	CU YD	106,500	106,500
20800150	TRENCH BACKFILL	CU YD	36	36
25000210	SEEDING, CLASS 2A	ACRE	4.00	4.00
25000400	NITROGEN FERTILIZER NUTRIENT	POUND	360	360
25000500	PHOSPHORUS FERTILIZER NUTRIENT	POUND	360	360
25000600	POTASSIUM FERTILIZER NUTRIENT	POUND	360	360
25100630	EROSION CONTROL BLANKET	SQ YD	19,268	19,268
28000305	TEMPORARY DITCH CHECKS	FOOT	60	60
28000400	PERIMETER EROSION BARRIER	FOOT	2,402	2,402
28000500	INLET AND PIPE PROTECTION	EACH	3	3
28000510	INLET FILTERS	EACH	1	1
48101500	AGGREGATE SHOULDERS, TYPE B 6"	SQ YD	19	19
<del>5422A036</del>	<del>PIPE CULVERTS, CLASS A, TYPE 2 36" (TEMPORARY)</del>	<del>FOOT</del>	<del>59</del>	<del>59</del>
5422D036	PIPE CULVERTS, CLASS D, TYPE 2 36" (TEMPORARY)	FOOT	59	59
54262736	METAL FLARED END SECTIONS 36"	EACH	2	2

\* DENOTES SPECIALTY ITEM

				CONSTR. CODE
				100% STATE
CODE NO.	ITEM	UNIT	TOTAL QUANTITY	ROADWAY
				0044
				URBAN
* 66900200	NON-SPECIAL WASTE DISPOSAL	CU YD	106,500	106,500
* 66900530	SOIL DISPOSAL ANALYSIS	EACH	4	4
* 66901001	REGULATED SUBSTANCES PRE-CONSTRUCTION PLAN	L SUM	1	1
* 66901003	REGULATED SUBSTANCES FINAL CONSTRUCTION REPORT	L SUM	1	1
* 66901006	REGULATED SUBSTANCES MONITORING	CAL DA	212	212
67100100	MOBILIZATION	L SUM	1	1
70107025	CHANGEABLE MESSAGE SIGN	CAL DA	267	267
70300150	SHORT TERM PAVEMENT MARKING REMOVAL	SQ FT	785	785
70307120	TEMPORARY PAVEMENT MARKING - LINE 4" - TYPE IV TAPE	FOOT	873	873
70307140	TEMPORARY PAVEMENT MARKING - LINE 8" - TYPE IV TAPE	FOOT	740	740
* 78008210	POLYUREA PAVEMENT MARKING TYPE I - LINE 4"	FOOT	874	874
* 78008220	POLYUREA PAVEMENT MARKING TYPE I - LINE 5"	FOOT	261	261
* 78008240	POLYUREA PAVEMENT MARKING TYPE I - LINE 8"	FOOT	682	682
78300202	PAVEMENT MARKING REMOVAL - WATER BLASTING	SQ FT	812	812

1 REVISED SHEET 5/23/2025

Model: Default  
File: \\na\p\bluecom-np-ow-bentley.com\AECOM\_D519\_NA\Documents\60658563-1-190\B00-CAD\B10\_CAD\WB\WB-ADV03\_SHEETS\Civil\062T95-SIT-S00.dgn

				CONSTR. CODE
				90% FED
				10% STATE
CODE NO.	ITEM	UNIT	TOTAL	ROADWAY
			QUANTITY	0044
				URBAN
Z0013797	STABILIZED CONSTRUCTION ENTRANCE	SQ YD	489	489
Z0013798	CONSTRUCTION LAYOUT	L SUM	1	1
X5427602	REMOVE EXISTING FLARED END SECTION	EACH	2	2
X6700407	ENGINEER'S FIELD OFFICE, TYPE A (D1)	CAL MO	9	9
X7010216	TRAFFIC CONTROL AND PROTECTION, (SPECIAL)	L SUM	1	1
X7011015	TRAFFIC CONTROL AND PROTECTION (EXPRESSWAYS)	L SUM	1	1
X7013820	TRAFFIC CONTROL SURVEILLANCE, EXPRESSWAYS	CAL DA	267	267
X7830050	RAISED REFLECTIVE PAVEMENT MARKER, REFLECTOR REMOVAL	EACH	28	28
X7830052	RAISED REFLECTIVE PAVEMENT MARKER, REFLECTOR REPLACEMENT	EACH	28	28
Z0076604	TRAINEES – TRAINING PROGRAM GRADUATE	hour	500	500



\* DENOTES SPECIALTY ITEM



USER NAME = Chiua	DESIGNED - AFC	REVISED -
	DRAWN - AFC	REVISED -
PLOT SCALE = 2.0000' / in.	CHECKED - MJE	REVISED -
PLOT DATE = 3/21/2025	DATE - 03/21/2025	REVISED -

STATE OF ILLINOIS  
DEPARTMENT OF TRANSPORTATION

SUMMARY OF QUANTITIES

SCALE: NONE    SHEET 2 OF 2 SHEETS    STA.    TO STA.

F.A.I. RTE.	SECTION	COUNTY	TOTAL SHEETS	SHEET NO.
190	FAI 190 22 EW	COOK	37	4
CONTRACT NO. 62T95				
ILLINOIS FED. AID PROJECT				

REVISED SHEET 5/23/2025

MODEL: Default  
FILE NAME: pw:\\asecom-na-pw.bentley.com\\AECOM DS19 NAI\\Documents\\60658563-I-190\\900-CAD\\910 CAD\\WB\\WB-ADV\\03 SHEETS\\CIV\\IND162\\T95-SHT-StagInq-Gennote-01.dgn

11. THE CONTRACTOR IS PROHIBITED FROM STAGING OR PARKING TRUCKS ALONG WB I-190, TOLLWAY RAMP F, TOLL PLAZA 31, THE ADJACENT EXPRESSWAYS OR QUEUING TRUCKS ON THE WB I-190 RAMP TO NB MANNHEIM. IT IS ESSENTIAL THAT ALL TRUCKS ENTERING THE WORK ZONE ARE ALIGNED ALONG THE TANGENT SECTION OF THE RAMP TO ENSURE SAFETY AND SMOOTH TRAFFIC FLOW.
12. CHANGEABLE MESSAGE SIGNS SHALL BE INSTALLED TWO WEEKS PRIOR TO ALL TRAFFIC STAGE CHANGES ON EACH APPROACH OF THE EFFECTED ROADWAY TO WARN MOTORISTS OF THE UPCOMING EVENT. THE SIGN MESSAGES SHALL BE REVISED TWO WEEKS THEREAFTER WITH MESSAGES WARNING TRAFFIC OF POTENTIAL TRAFFIC DELAYS, QUEUING AND/OR WITH MESSAGES NOTIFYING TRAFFIC TO USE ALTERNATE ROUTES. THE SIGN LOCATIONS AND MESSAGES SHALL BE DETERMINED BY THE ENGINEER.

- 

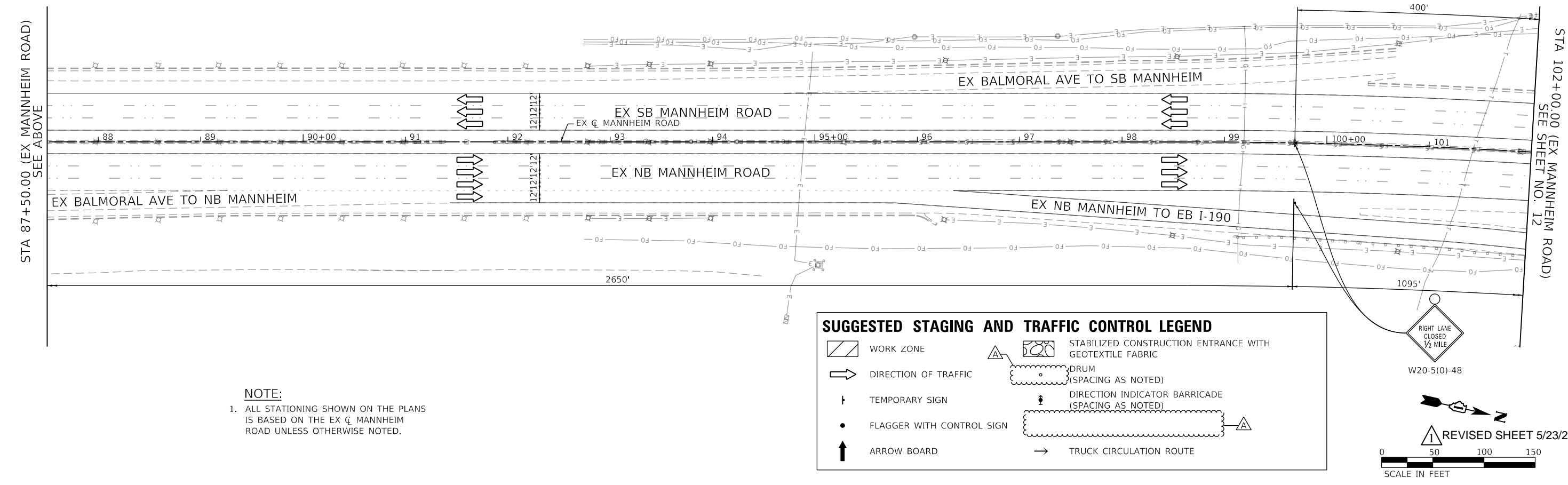
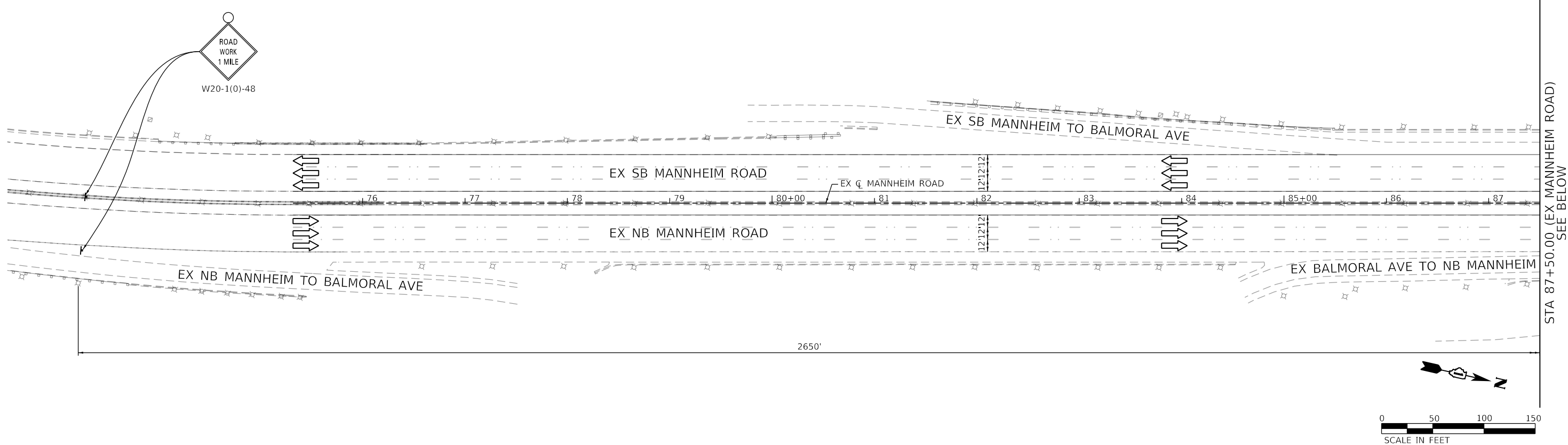
TRAFFIC CONTROL:

CONSTRUCTION:

- ### SUGGESTED STAGES OF CONSTRUCTION AND TRAFFIC CONTROL SCHEDULE

TOTAL	785	873	740	874	261	682	812	28	28
-------	-----	-----	-----	-----	-----	-----	-----	----	----

MODEL: Default  
FILE: \\miller-prod\ascom-prod\miller\com\AECOM\_DS10\_MID\Documents\60658563-4-190\000-CADD\B10\_CADD\WB-WB-ADV03\_SHEETS\CHRD162T95-SHT-5\Signs-Online-2-01.dgn



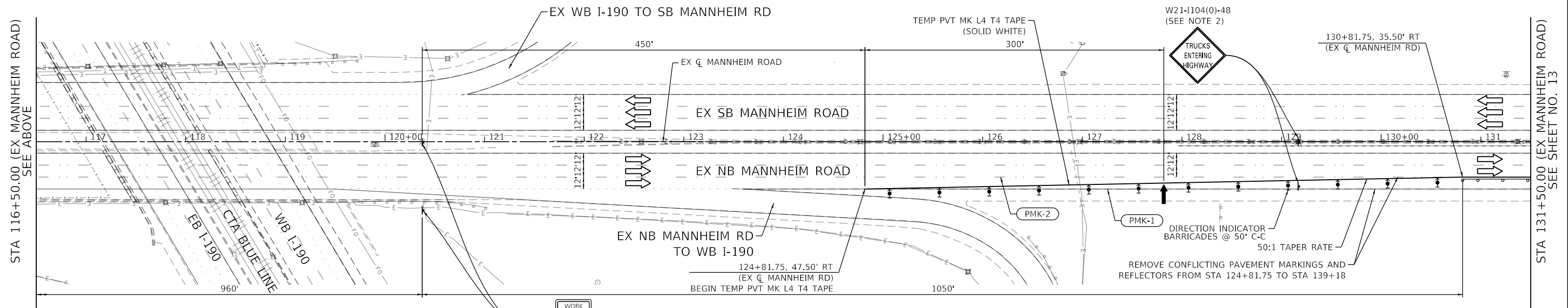
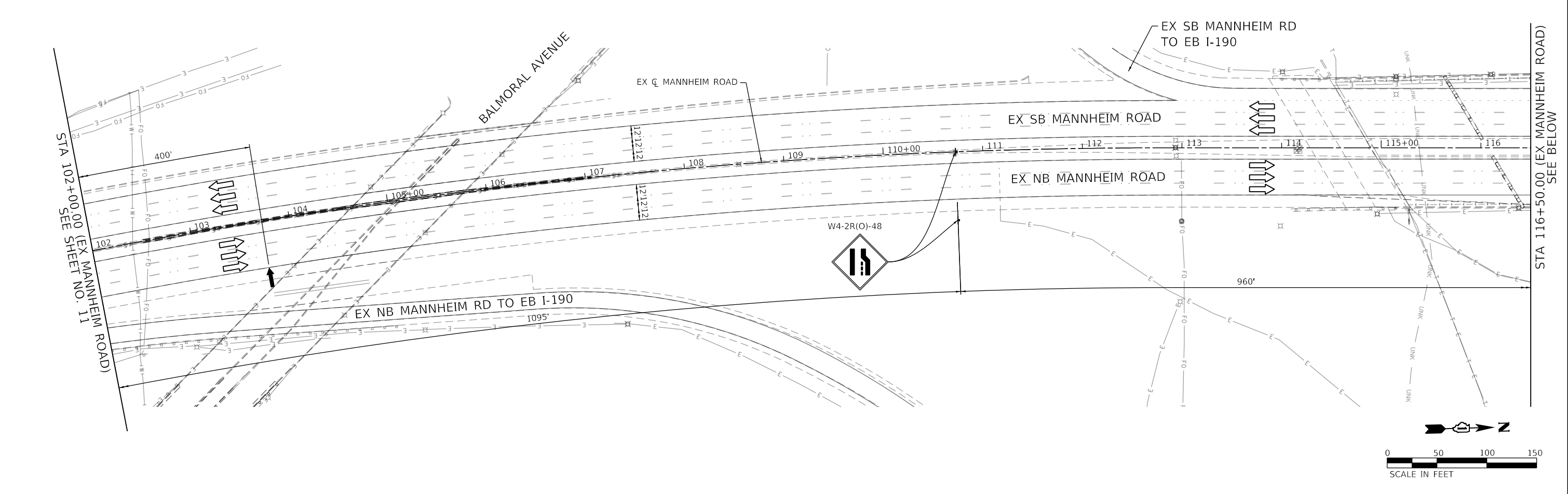
USER NAME	= ChluA	DESIGNED -	AFC	REVISED -	5/23/2025
DRAWN	-	AFC	REVISED	-	
PLOT SCALE	= 100,0000 ' / In.	CHECKED -	MJE	REVISED -	
PLOT DATE	= 5/21/2025	DATE	-	03/21/2025	REVISED -

STATE OF ILLINOIS  
DEPARTMENT OF TRANSPORTATION

SUGGESTED STAGES OF CONSTRUCTION AND TRAFFIC CONTROL PLAN			
MANNHEIM ROAD			
SCALE: 1"=50'	SHEET 1 OF 3 SHEETS	STA.	TO STA.

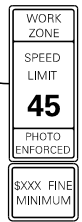
F.A.I. RTE.	SECTION	COUNTY	TOTAL SHEETS	SHEET NO.
190	FAI 190 22 EW	COOK	37	11
CONTRACT NO. 62T95				
ILLINOIS FED. AID PROJECT				

MODEL: Default  
FILE: \\miller-prod-bascom-pc-sw-bentley.com\AECOM\_D512\_MAD\Documents\60658563-1-190\000-CADD\B10\_CADD\WB-WB-ADV03\_SHEETS\CH1010-162705-SHT-Substation-Online-2-02.dgn



**NOTES:**

- ALL STATIONING SHOWN ON THE PLANS IS BASED ON THE EX CL MANNHEIM ROAD UNLESS OTHERWISE NOTED.
- SIGNS SHALL BE REMOVED OR TURNED AWAY FROM TRAFFIC WHEN THE FLAGGING OPERATION CEASES.
- PRIOR TO RESTORING TRAFFIC TO EXISTING CONDITION, THE CONTRACTOR SHALL RE-INSTALL PAVEMENT MARKINGS TO THEIR ORIGINAL CONDITION UPON UTILIZING THE FOLLOWING PAVEMENT MARKINGS:
  - PMK-1 POLYUREA PM T1 LN 4 (WHITE SOLID) FROM STA 124+81.75 TO STA 133+52.94
  - PMK-2 POLYUREA PM T1 LN 5 (WHITE LANE LINE - 10' DASH, 30' SKIP) RRPM REFLECTOR REPLAC FROM STA 124+81.75 TO STA 135+16.56



W21-1115(O)-3618  
R2-1-3648  
R10-1108p-3618  
R2-1106p-3618

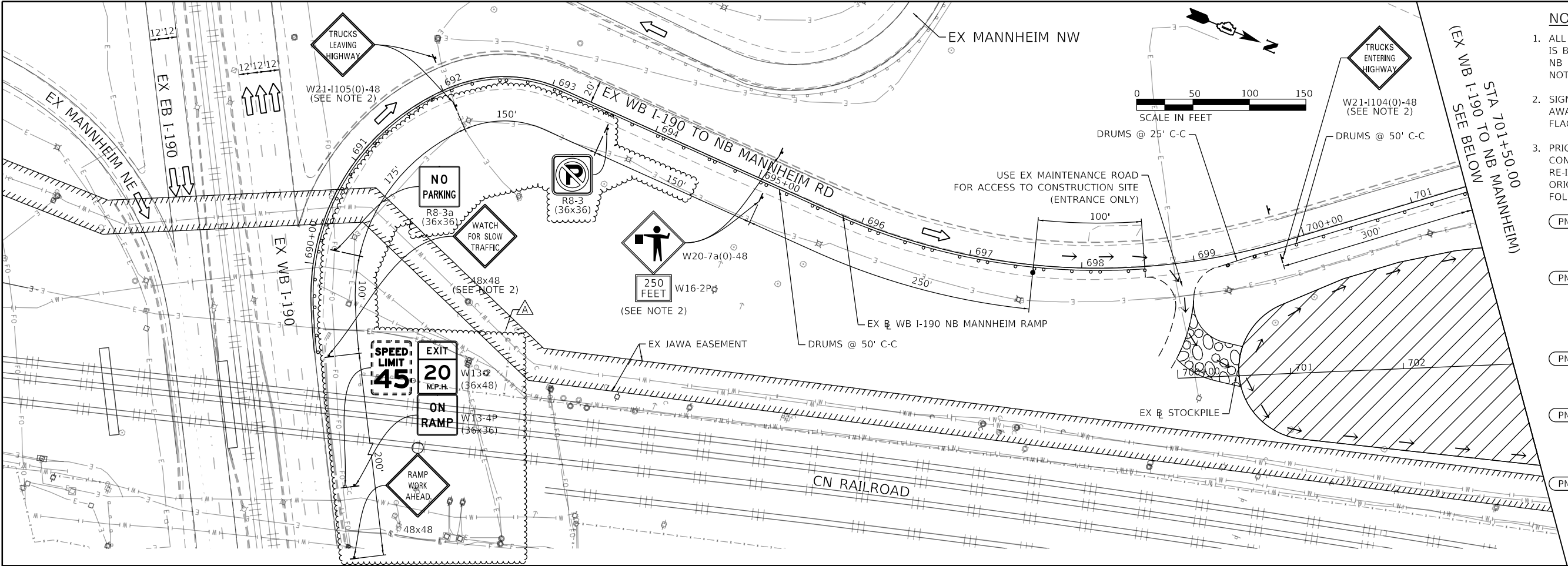
**SUGGESTED STAGING AND TRAFFIC CONTROL LEGEND**

	WORK ZONE		STABILIZED CONSTRUCTION ENTRANCE WITH GEOTEXTILE FABRIC
	DIRECTION OF TRAFFIC		DRUM (SPACING AS NOTED)
	TEMPORARY SIGN		DIRECTION INDICATOR BARRICADE (SPACING AS NOTED)
	FLAGGER WITH CONTROL SIGN		TRUCK CIRCULATION ROUTE
	ARROW BOARD		

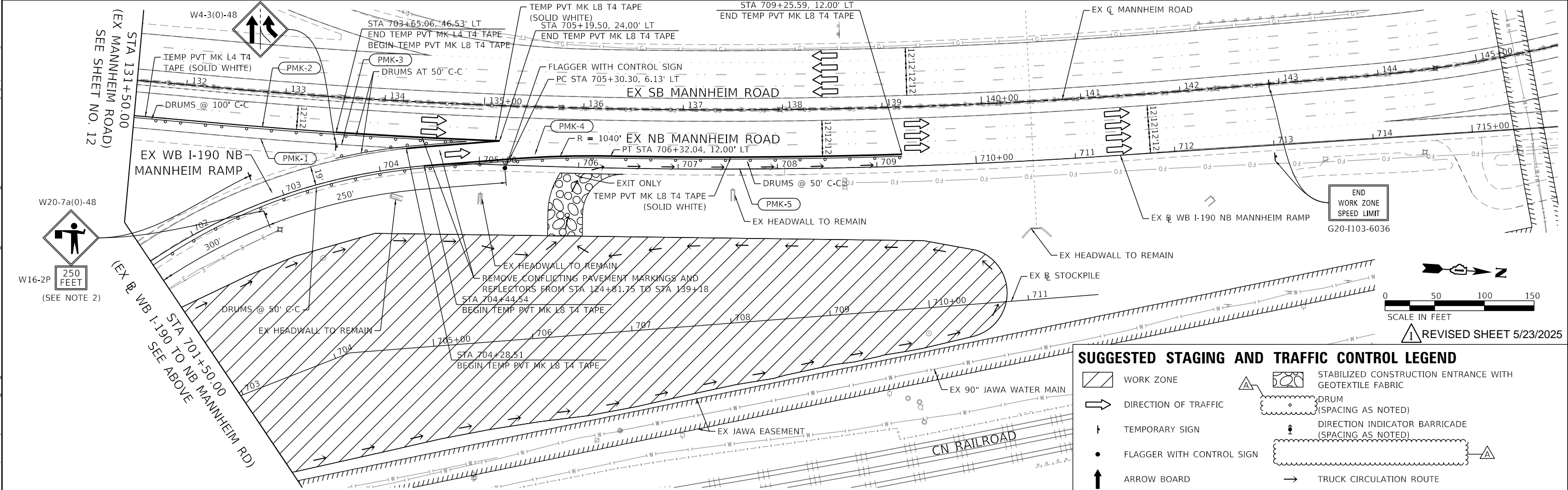
REVISED SHEET 5/23/2025

SCALE IN FEET

<b>AECOM</b> 130 EAST RANDOLPH STREET, SUITE 2400 CHICAGO, IL 60601-6322 PHONE: (312) 373-7700 FAX: (312) 373-6800	USER NAME = Ch1uA		DESIGNED - AFC	REVISED - 5/23/2025	<b>STATE OF ILLINOIS</b> <b>DEPARTMENT OF TRANSPORTATION</b>	<b>SUGGESTED STAGES OF CONSTRUCTION AND TRAFFIC CONTROL PLAN</b> <b>MANNHEIM ROAD</b>			F.A.I. RTE.	SECTION	COUNTY	TOTAL SHEETS	SHEET NO.
	PLOT SCALE = 100,0000' / 1in.		DRAWN - AFC	REVISED -		SCALE: 1"=50'			190	FAI 190 22 EW	COOK	37	12
	PLOT DATE = 5/21/2025		CHECKED - MJE	REVISED -		SHEET 2 OF 3 SHEETS			CONTRACT NO. 62T95				
			DATE - 03/21/2025	REVISED -		STA. TO STA.			ILLINOIS FED. AID PROJECT				



- NOTES:**
- ALL STATIONING SHOWN ON THE PLANS IS BASED ON THE EX B WB I-190 NB MANNHEIM RAMP UNLESS OTHERWISE NOTED.
  - SIGNS SHALL BE REMOVED OR TURNED AWAY FROM TRAFFIC WHEN THE FLAGGING OPERATION CEASES.
  - PRIOR TO RESTORING TRAFFIC TO EXISTING CONDITION, THE CONTRACTOR SHALL RE-INSTALL PAVEMENT MARKINGS TO THEIR ORIGINAL CONDITION UPON UTILIZING THE FOLLOWING PAVEMENT MARKINGS:
- PMK-1** POLYUREA PM T1 LN 4 (WHITE SOLID) FROM STA 124+81.75 TO STA 133+52.94
  - PMK-2** POLYUREA PM T1 LN 5 (WHITE LANE LINE - 10' DASH, 30' SKIP) RRPM REFLECTOR REPLAC FROM STA 124+81.75 TO STA 135+16.56
  - PMK-3** POLYUREA PM T1 LN 8 (WHITE SOLID) FROM STA 133+52.94 TO STA 134+23.87
  - PMK-4** POLYUREA PM T1 LN 8 (WHITE DOTTED LINE - 3' DASH, 9' SKIP) FROM STA 134+23.87 TO STA 139+18.47
  - PMK-5** POLYUREA PM T1 LN 8 (WHITE SOLID) FROM STA 134+42.58 TO STA 139+18.47



**SUGGESTED STAGING AND TRAFFIC CONTROL LEGEND**

	WORK ZONE		STABILIZED CONSTRUCTION ENTRANCE WITH GEOTEXTILE FABRIC
	DIRECTION OF TRAFFIC		DRUM (SPACING AS NOTED)
	TEMPORARY SIGN		DIRECTION INDICATOR BARRICADE (SPACING AS NOTED)
	FLAGGER WITH CONTROL SIGN		TRUCK CIRCULATION ROUTE
	ARROW BOARD		