

INDEX OF SHEETS

SEE SHEET 2 FOR INDEX OF SHEETS 06-13-2025 LETTING ITEM 011

HIGHWAY STANDARDS

SEE SHEET 2 FOR LIST OF HIGHWAY STANDARDS

DISTRICT 1 DETAILS

SEE SHEET 2 FOR LIST OF DISTRICT 1 DETAILS

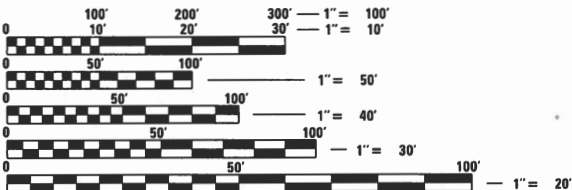
STATE OF ILLINOIS
DEPARTMENT OF TRANSPORTATION
**PLANS FOR PROPOSED
FEDERAL AID HIGHWAY**
FAU 2794 (CENTRAL AVENUE)
FAP 377 (DEMPSTER STREET) TO FAU 1312 (GOLF ROAD)
ROADWAY IMPROVEMENTS, RESURFACING
VILLAGE OF MORTON GROVE
SECTION NO. 24-00113-00-RS
PROJECT NO. 83E5(067)
COOK COUNTY
C-91-146-25



DESIGN FIRM REGISTRATION NUMBER: 184-001016
8725 W. Higgins Road, Suite 600 | Chicago, IL 60631
P 773.775.4009 | www.ciorba.com

CENTRAL AVENUE: MAJOR URBAN COLLECTOR

ADT (2022) = 9,850
DESIGN SPEED = 30 MPH
POSTED SPEED = 25 MPH
DESIGN DESIGNATION - 672(16) URBAN COLLECTOR



FULL SIZE PLANS HAVE BEEN PREPARED USING STANDARD
ENGINEERING SCALES. REDUCED SIZED PLANS WILL NOT
CONFORM TO STANDARD SCALES. IN MAKING MEASUREMENTS
ON REDUCED PLANS, THE ABOVE SCALES MAY BE USED.

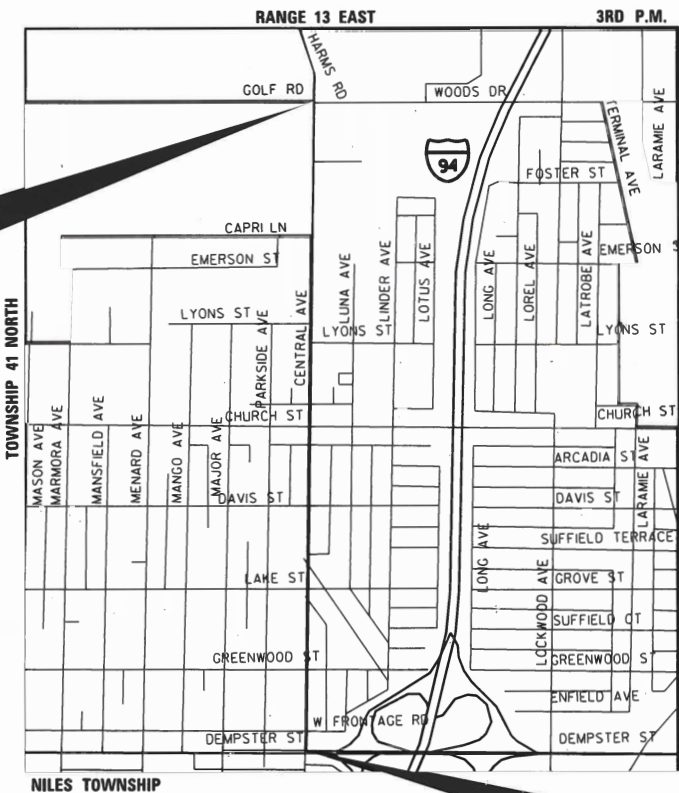
J.U.L.I.E.
JOINT UTILITY LOCATION INFORMATION FOR EXCAVATION
1-800-892-0123
OR 811

CONTRACT NO. 61L64



DATE: 2/28/2025
SEAL EXPIRES: 11/30/2025

Matthew J. Lehan



LOCATION MAP
(NOT TO SCALE)

PROJECT LENGTH

GROSS LENGTH (CENTRAL AVENUE) = 5,075 FT. = 0.96 MILE
NET LENGTH (CENTRAL AVENUE) = 5,075 FT. = 0.96 MILE

F.A.U. RTE.	SECTION	COUNTY	TOTAL SHEETS	SHEET NO.
2794	24-0013-00-RS	COOK	32	1
FED. ROAD DIST. NO.	ILLINOIS	CONTRACT NO.	61L64	



STATE OF ILLINOIS DEPARTMENT OF TRANSPORTATION

Approved		DATE	02/28/2025
Village of Morton Grove, Village Engineer			
Passed		DATE	April 9 2025
District 1 Engineer of Local Roads & Streets			
Releasing for Bid Based on Limited Review		DATE	April 9 2025
Regional Engineer			

PRINTED BY THE AUTHORITY
OF THE STATE OF ILLINOIS

INDEX OF SHEETS

SHEET NO	DESCRIPTION
1	COVER SHEET
2	INDEX, STANDARDS AND GENERAL NOTES
3 - 5	SUMMARY OF QUANTITIES
6 - 7	TYPICAL SECTIONS
8 - 12	PROPOSED PLAN
13	MAINTENANCE OF TRAFFIC GENERAL NOTES AND STAGING
14 - 18	PAVEMENT MARKING PLAN
19 - 20	CENTRAL AVENUE AND CHURCH STREET DETECTOR LOOP DETAILS
21	CENTRAL AVENUE AND CHURCH STREET CABLE PLAN
22 - 32	IDOT DISTRICT 1 DETAILS

LIST OF IDOT STANDARD DRAWINGS

000001-08	STANDARD SYMBOLS, ABBREVIATIONS AND PATTERNS
001001-02	AREAS OF REINFORCEMENT BARS
001006	DECIMAL OF AN INCH TO A FOOT
424001-12	PERPENDICULAR CURB RAMPS FOR SIDEWALKS
424006-06	DIAGONAL CURB RAMPS
424011-05	CORNER PARALLEL CURB RAMPS FOR SIDEWALKS
424016-06	MID-BLOCK CURB RAMPS FOR SIDEWALKS
424021-07	DEPRESSED CORNER FOR SIDEWALKS
424026-04	ENTRANCE ALLEY PEDESTRIAN CROSSING
442201-03	CLASS C&D PATCHES
604001-05	FRAME AND LIDS TYPE 1
604051-04	FRAMES AND GRATE TYPE 11
606001-08	CONCRETE CURB AND COMBINATION CONCRETE CURB AND GUTTER
701006-05	OFF-RD OPERATIONS 2L 2W 15' TO 24" FROM PAVEMENT EDGE
701101-05	OFF-RD OPERATIONS, MULTILANE, 15' TO 24" FROM PAVEMENT EDGE
701301-04	LANE CLOSURE, 2L, 2W, SHORT TIME OPERATIONS
701311-03	LANE CLOSURE 2L, 2W MOVING OPERATIONS - DAY ONLY
701427-05	LANE CLOSURE MULTILANE INTERMITTENT OR MOVING OPERATIONS 40MPH OR LESS
701501-06	URBAN LANE CLOSURE, 2L, 2W, UNDIVIDED
701602-10	URBAN LANE CLOSURE MULTILANE, 2W WITH BIDIRECTIONAL LEFT TURN LANE
701606-10	URBAN SINGLE LANE CLOSURE MULTILANE, 2W WITH MOUNTABLE MEDIAN
701611-01	URBAN HALF ROAD CLOSURE MULTILANE, 2W WITH MOUNTABLE MEDIAN
701701-10	URBAN LANE CLOSURE MULTILANE INTERSECTION
701801-06	SIDEWALK, CORNER OR CROSSWALK CLOSURE
701901-10	TRAFFIC CONTROL DEVICES

LIST OF DISTRICT ONE DETAILS

BD-08	FRAMES AND LIDS ADJUSTMENT WITH MILLING
BD-22	PAVEMENT PATCHING FOR HMA SURFACED PAVEMENT
BD-24	CURB OR CURB AND GUTTER REMOVAL AND REPLACEMENT
BD-32	BUTT JOINTS AND HMA TAPER
TC-10	TRAFFIC CONTROL AND PROTECTION FOR SIDE ROADS, INTERSECTIONS, AND DRIVEWAYS
TC-11	RAISED REFLECTIVE PAVEMENT MARKERS (SNOW PLOW RESISTANT)
TC-13	TYPICAL PAVEMENT MARKINGS
TC-16	SHORT TERM PAVEMENT MARKING AND SYMBOLS
TC-22	ARTERIAL ROAD INFORMATION SIGN
TC-26	DRIVEWAY ENTRANCE SIGNING
TS-07	DETECTOR LOOP INSTALLATION DETAIL FOR ROADWAY RESURFACING

GENERAL NOTES

1. IT IS THE CONTRACTOR'S RESPONSIBILITY TO ASCERTAIN EXISTING FIELD CONDITIONS PRIOR TO BIDDING ON THIS PROJECT.
2. WHEN THE PLANS OR SPECIAL PROVISIONS INCLUDE INFORMATION PERTAINING TO THE LOCATION AND ELEVATIONS OF UTILITY FACILITIES, SUCH INFORMATION REPRESENTS ONLY THE OPINION OF THE ENGINEER AS TO LOCATION AND ELEVATION OF SUCH UTILITIES AND IS ONLY INCLUDED FOR THE CONVENIENCE OF THE BIDDERS. THE ENGINEER AND THE OWNER ASSUME NO RESPONSIBILITY WHATEVER IN RESPECT TO THE SUFFICIENCY OR ACCURACY OF THE INFORMATION SHOWN ON THE PLANS RELATIVE TO THE LOCATION AND ELEVATION OF UTILITY FACILITIES, NOR THE MANNER IN WHICH THEY ARE TO BE REMOVED OR ADJUSTED.
3. THE CONTRACTOR SHALL CONTACT J.U.L.I.E. AT 1-800-892-0123 AT LEAST 48 HOURS PRIOR TO START OF WORK.
4. ANY EXISTING ROADWAY PAVEMENT OR SHOULDER DISTURBED DURING CONSTRUCTION THAT IS NOT SCHEDULED TO BE REMOVED SHALL BE RESTORED IN ACCORDANCE WITH I.D.O.T. AND VILLAGE OF MORTON GROVE STANDARDS AT NO ADDITIONAL COST TO THE CONTRACT.
5. TACK COAT MUST BE INSTALLED NO EARLIER THAN TWENTY-FOUR (24) HOURS PRIOR TO PLACEMENT OF HOT-MIX ASPHALT.
6. THE CONTRACTOR SHALL MAKE ALL NECESSARY FINAL ADJUSTMENTS TO EXISTING AND PROPOSED FRAMES, GRATES, LIDS, AND STRUCTURES TO MEET FINAL FINISHED GRADES.
7. THE CONTRACTOR SHALL MAINTAIN AND KEEP UP TO DATE A SET OF "RECORD DRAWINGS" SHOWING ALL CHANGES FROM THE ORIGINAL PLANS. THE CONTRACTOR SHALL DELIVER THE "RECORD DRAWINGS" TO THE ENGINEER AT THE CONCLUSION OF THE PROJECT.
8. MILLING OF THE ROADWAY WILL TAKE PLACE BEFORE PAVEMENT PATCH LOCATIONS ARE DETERMINED. IF AFTER MILLING IT IS DETERMINED THAT PATCHES SHOWN ON THE PLANS ARE NOT REQUIRED, THEN THEY WILL BE REMOVED.
9. CONCRETE CURB AND GUTTER SHALL BE DEPRESSED AT ALL DRIVEWAYS AND ENTRANCES.
10. THE CONTRACTOR SHALL CONTACT KALPANA KANNAN-HOSADURGA, THE DISTRICT ONE TRAFFIC CONTROL SUPERVISOR, AT KALPANA.KANNAN-HOSADURGA@ILLINOIS.GOV A MINIMUM OF 72 HOURS IN ADVANCE OF BEGINNING WORK.
11. THE CONTRACTOR SHALL TAKE PRECAUTION BY PRESERVING EXISTING TREES WITHIN THE RIGHT OF WAY. IF ANY DAMAGE OCCURS, TREES SHALL BE REPLACED IN KIND PER ARTICLE 201.07 REPAIR OR REPLACEMENT OF EXISTING PLANT MATERIAL REQUIREMENTS STATED HEREIN.

DATE PLOTTED = 3/26/2025 12:36:02 PM
PEN TABLE = prof#.tbl
PLOT CONFIG = IDOT_PDF_NetLayer_BW.ctb
FILE NAME = procorba\pub\entley.com\corba\caw-01\Documents\projects\ill_Munkel\all\laser\Morton Grove\0021456.21\CADD Data\SH\MS\Sheets\0021456.21-sht-2-general.dgn



8725 W. Higgins Rd, Ste 600, Chicago, IL 60631
P 773.775.4009 | www.ciorba.com

USER NAME = aham	DESIGNED - AMH	REVISED -
	DRAWN - AMH	REVISED -
PLOT SCALE = 1" = 20'	CHECKED - EPS	REVISED -
PLOT DATE = 11/4/2024	DATE - 3/26/2025	REVISED -

STATE OF ILLINOIS
DEPARTMENT OF TRANSPORTATION

CENTRAL AVENUE LOCAL AGENCY FUNCTIONAL OVERLAY INDEX, STANDARDS AND GENERAL NOTES			
SCALE: NTS	SHEET	OF	SHEETS
STA.		TO STA.	

F.A.U. RTE.	SECTION	COUNTY	TOTAL SHEETS	SHEET NO.
2794	24-00113-00-RS	COOK	32	2
CONTRACT NO. 61L64				
ILLINOIS		FED. AID PROJECT		

DATE PLOTTED = 3/26/2025 12:36:08 PM
PLOT CONFIG = C:\Users\aharn\OneDrive\Documents\Projects\Ill. Mun\Utilities\Morton Grove\021456.21\CAOD Data\SHU\Misc\Sheets\0021456.21-shl-500.dgn
MODEL: SHU\ELIMATES
FILE NAME: mvc\ciorba-aw-bentley.com\ciorba-aw-01\Documents\Projects\Ill. Mun\Utilities\Morton Grove\021456.21\CAOD Data\SHU\Misc\Sheets\0021456.21-shl-500.dgn



USER NAME = aharn	DESIGNED - AMH	REVISED -
PLOT SCALE = 1" = 20'	DRAWN - AMH	REVISED -
PLOT DATE = 11/4/2024	CHECKED - EPS	REVISED -
	DATE - 3/26/2025	REVISED -

STATE OF ILLINOIS
DEPARTMENT OF TRANSPORTATION

CENTRAL AVENUE LOCAL AGENCY FUNCTIONAL OVERLAY
SUMMARY OF QUANTITIES

SCALE: NTA SHEET OF SHEETS STA. TO STA.

F.A.U. RTE. 2794	SECTION 24-00113-00-RS	COUNTY COOK	TOTAL SHEETS 32	SHEET NO. 3
CONTRACT NO. 61L64				
ILLINOIS FED. AID PROJECT				

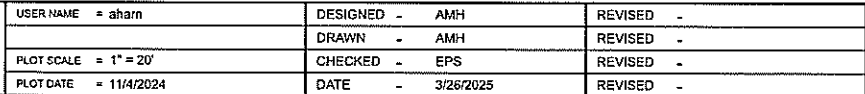
SPECIALTY ITEM	CODE NO.	ITEM	UNIT	TOTAL	Roadway 80% FED / 20% LOCAL 0005	ROADWAY 100% LOCAL 0005
	20101400	NITROGEN FERTILIZER NUTRIENT	POUND	9	9	
	20101600	POTASSIUM FERTILIZER NUTRIENT	POUND	9	9	
	20200100	EARTH EXCAVATION	CU YD	21	21	
	20201200	REMOVAL AND DISPOSAL OF UNSUITABLE MATERIAL	CU YD	184	184	
	21101615	TOPSOIL FURNISH AND PLACE, 4"	SQ YD	720	720	
	25200110	SODDING, SALT TOLERANT	SQ YD	720	720	
	25200200	SUPPLEMENTAL WATERING	UNIT	39	39	
	28000510	INLET FILTERS	EACH	53	53	
	30300001	AGGREGATE SUBGRADE IMPROVEMENT	CU YD	184	184	
	31101180	SUBBASE GRANULAR MATERIAL, TYPE B 2"	SQ YD	1,278	1,278	
	31101600	SUBBASE GRANULAR MATERIAL, TYPE B 8"	SQ YD	70	70	
	40600290	BITUMINOUS MATERIALS (TACK COAT)	POUND	21,197	21,197	
	40600370	LONGITUDINAL JOINT SEALANT	FOOT	17,286	17,286	
	40600400	MIXTURE FOR CRACKS, JOINTS, AND FLANGEWAYS	TON	32	32	
	40600982	HOT-MIX ASPHALT SURFACE REMOVAL - BUTT JOINT	SQ YD	262	262	
	40603200	POLYMERIZED HOT-MIX ASPHALT BINDER COURSE, IL-4.75, N50	TON	1,759	1,759	

SPECIALTY ITEM	CODE NO.	ITEM	UNIT	TOTAL	Roadway 80% FED / 20% LOCAL 0005	ROADWAY 100% LOCAL 0005
	40604062	HOT-MIX ASPHALT SURFACE COURSE, IL-9.5, MIX "D", N70	TON	2,638	2,638	
	42300200	PORTLAND CEMENT CONCRETE DRIVEWAY PAVEMENT, 6 INCH	SQ YD	17	17	
	42300400	PORTLAND CEMENT CONCRETE DRIVEWAY PAVEMENT, 8 INCH	SQ YD	29	29	
	42400200	PORTLAND CEMENT CONCRETE SIDEWALK 5 INCH	SQ FT	3,347	3,347	
	42400800	DETECTABLE WARNINGS	SQ FT	435	435	
	44000159	HOT-MIX ASPHALT SURFACE REMOVAL, 2 1/2"	SQ YD	31,140	31,140	
	44000200	DRIVEWAY PAVEMENT REMOVAL	SQ YD	68	68	
	44000500	COMBINATION CURB AND GUTTER REMOVAL	FOOT	802	802	
	44000600	SIDEWALK REMOVAL	SQ FT	3,589	3,589	
	44003100	MEDIAN REMOVAL	SQ FT	1,913	1,913	
	44201725	CLASS D PATCHES, TYPE I, 7 INCH	SQ YD	8	8	
	44201729	CLASS D PATCHES, TYPE II, 7 INCH	SQ YD	11	11	
	44201733	CLASS D PATCHES, TYPE III, 7 INCH	SQ YD	39	39	
	44201735	CLASS D PATCHES, TYPE IV, 7 INCH	SQ YD	135	135	
	44201773	CLASS D PATCHES, TYPE I, 11 INCH	SQ YD	20	20	
	44201777	CLASS D PATCHES, TYPE II, 11 INCH	SQ YD	161	161	


```

DATE PLOTTED = 3/26/2025 12:36:00 PM
PEN TABLE = plotz.tbl
PLOT CONFIG = IDOT_PDF_Hatchymz_BW.pltcf
MODEL SHOWNAMES
FILE NAME: pvc\cdo\ba-pw-01\Documents\Projects\IL Municipalities\Norton Grove\0021456.21\CADD Data\SwMisc\Sheets\0021456.21-sht-500.dgn

```



SCALE:	SHEET	OF	SHEETS	STA.	TO STA.
--------	-------	----	--------	------	---------

ILLINOIS	FED. AID PROJECT
----------	------------------

DATE PLOTTED = 3/26/2025 12:36:15 PM
PEN TABLE = prof#_tbl
PLOT CONFIG = DOT_PDF_Nlayers_BW.plt
FILE NAME = procoradw-bentley.com\coradw-d1\Documents\projects\IL_Municipal\Haze/Morton Grove\002145621\002145621-TYP-Sections



USER NAME =	aham	DESIGNED -	AMH	REVISED -	
		DRAWN -	AMH	REVISED -	
PLOT SCALE =	1" = 10'	CHECKED -	EPS	REVISED -	
PLOT DATE =	11/4/2024	DATE -	3/26/2025	REVISED -	

STATE OF ILLINOIS
DEPARTMENT OF TRANSPORTATION

CENTRAL AVENUE LOCAL AGENCY FUNCTIONAL OVERLAY
TYPICAL SECTIONS

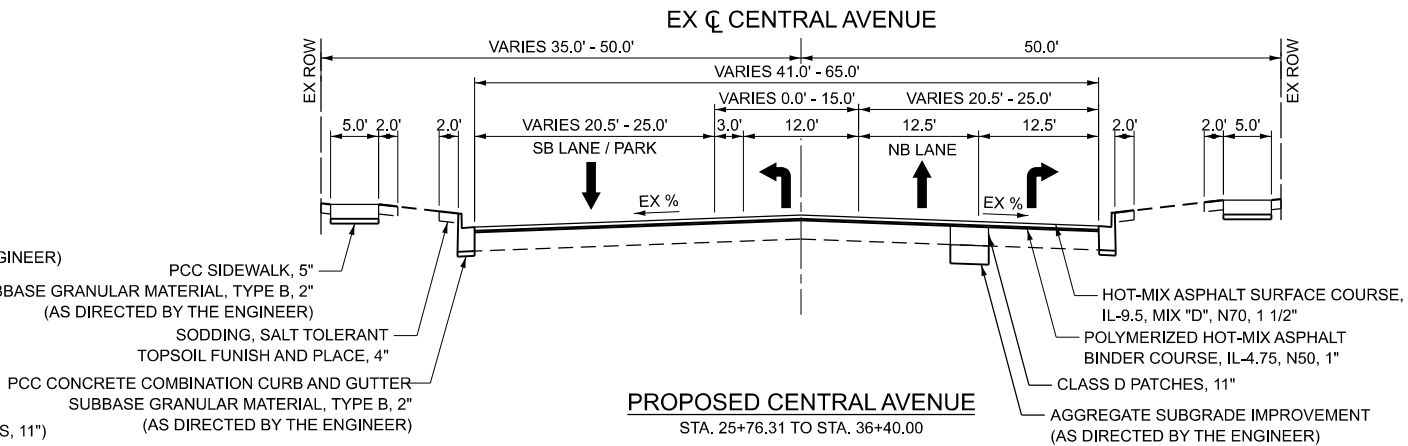
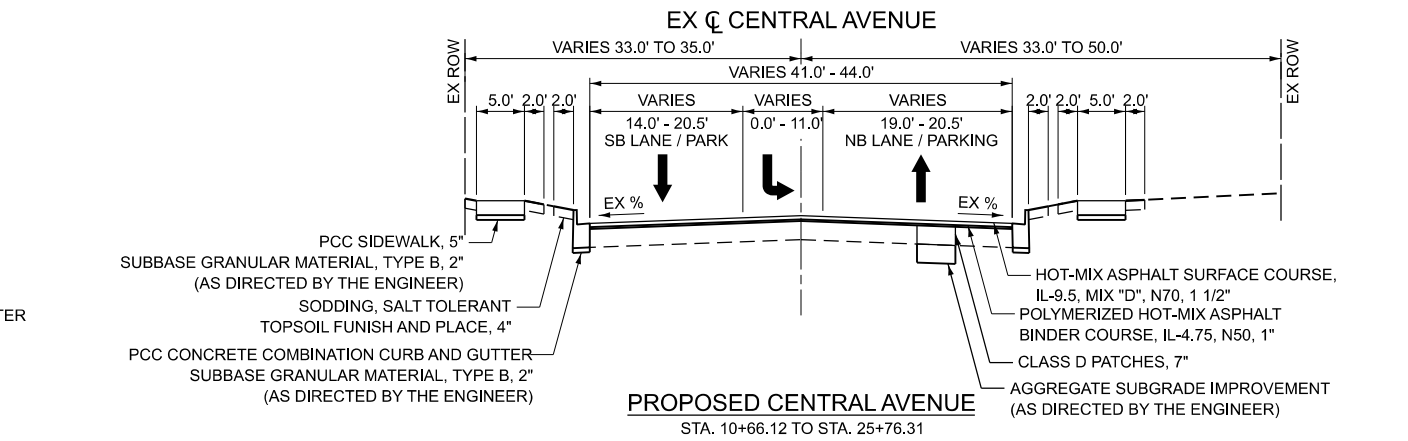
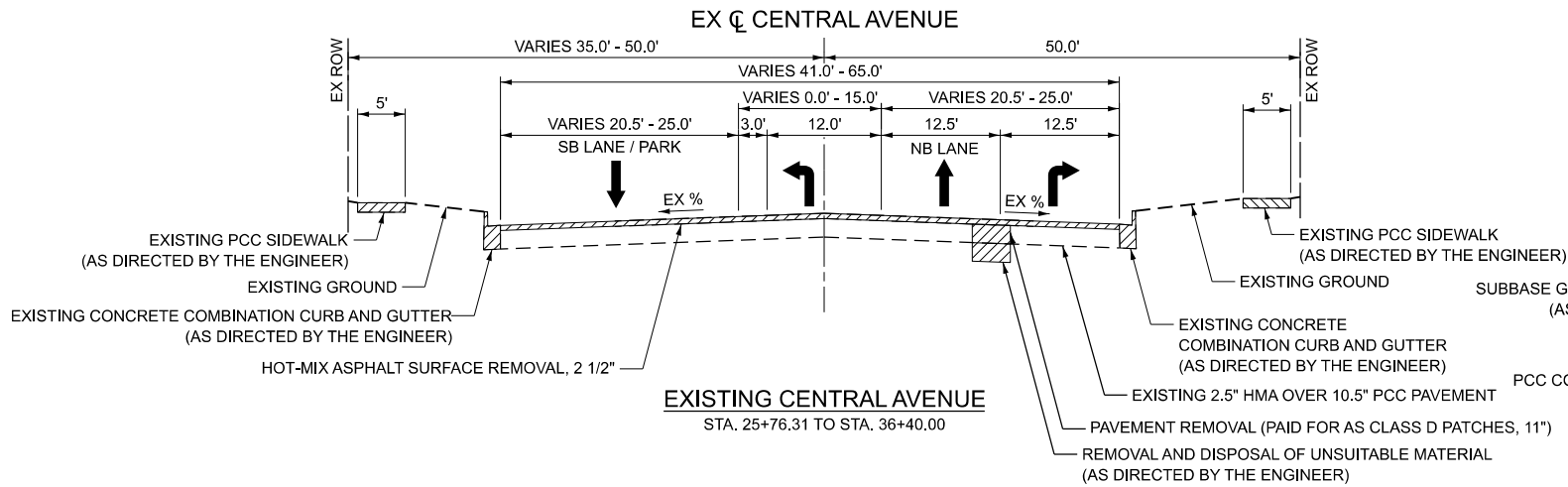
SCALE: 1" = 10' SHEET OF SHEETS STA. TO STA.

F.A.U. RTE.	SECTION	COUNTY	TOTAL SHEETS	SHEET NO.
2794	24-00113-00-RS	COOK	32	6
CONTRACT NO. 61L64				
		ILLINOIS	FED. AID PROJECT	

- THE UNIT WEIGHT USED TO CALCULATE ALL HOT-MIX ASPHALT SURFACE MIXTURES QUANTITIES IS 112 LBS/SY YD/IN.
- THE "AC" FOR POLYMERIZED HMA MIXES SHALL BE "SBS/SBR PG 76-22" AND FOR NON-POLYMERIZED HMA THE "AC TYPE" SHALL BE "PG 64-22" UNLESS MODIFIED BY RECLAIMED MATERIAL SPECIFICATIONS.
- THE CONTRACTOR SHALL MILL BEFORE PATCHING.
- THE LONGITUDINAL JOINT SEALANT SHALL BE PLACED ON THE HOT-MIX ASPHALT BINDER COURSE, IL-4.75, N50.

HOT-MIX ASPHALT MIXTURE REQUIREMENTS

MIXTURE TYPE	AIR VOIDS	QMP
PAVEMENT RESURFACING		
HOT-MIX ASPHALT SURFACE COURSE, IL-9.5, MIX "D", N70, 1 1/2"	4% @ 70 GYR	LR 1030-2
POLYMERIZED HOT-MIX ASPHALT BINDER COURSE, IL-4.75, N50, 1"	3.5% @ 50 GYR	LR 1030-2
PATCHING		
CLASS D PATCHES (HMA BINDER IL-19.0mm)	4% @ 70 GYR	LR 1030-2
HMA DRIVEWAY PAVEMENT 3"		
HOT-MIX ASPHALT SURFACE COURSE, IL-9.5, MIX "D", N50, 3" (IN 2 LIFTS)	4% @ 50 GYR	LR 1030-2
QMP DESIGNATION: LOCAL QUALITY ASSURANCE / QUALITY MANAGEMENT QC/QA PER LR 1030-2		



DATE PLOTTED = 3/26/2025 12:36:16 PM
PEN TABLE = prof#_tbl
PLOT CONFIG = DOT_PDF_NetLayer_BW.ctb
FILE NAME = procorba\p\entley\corba\backw\01\Documents\projects\ILL_Municipal\Itr\Central Avenue\0021456.21-TYP-Sections



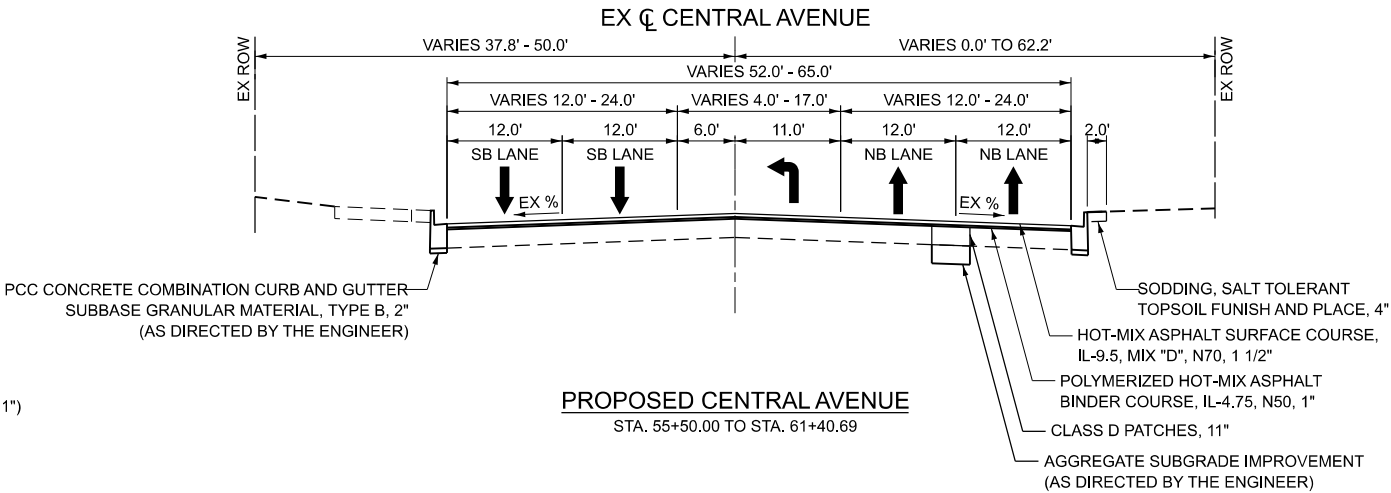
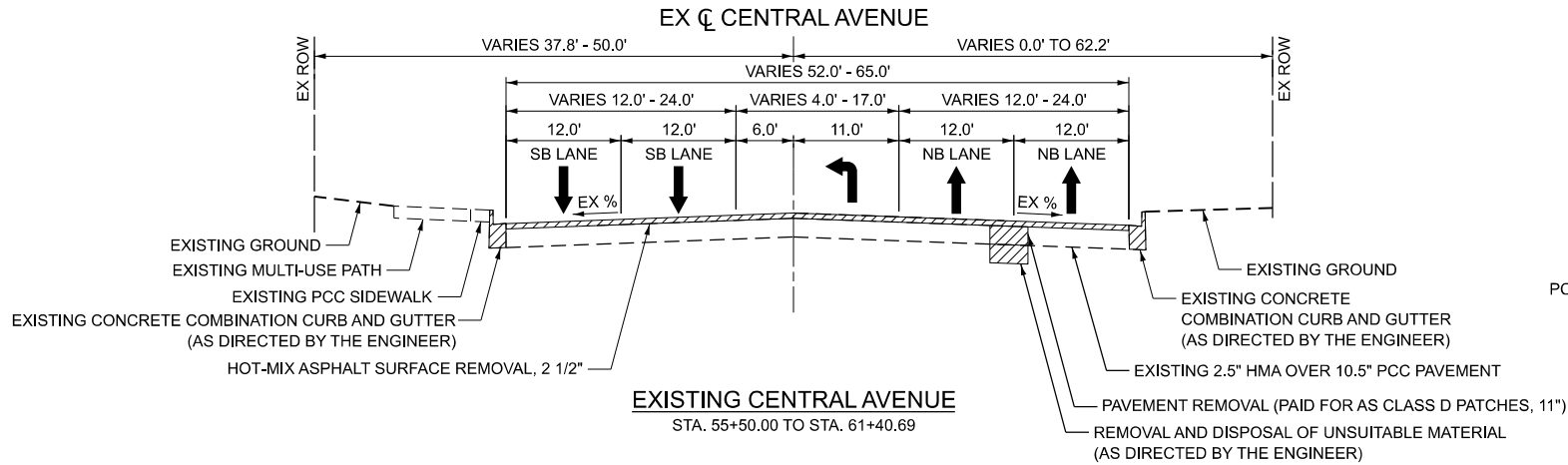
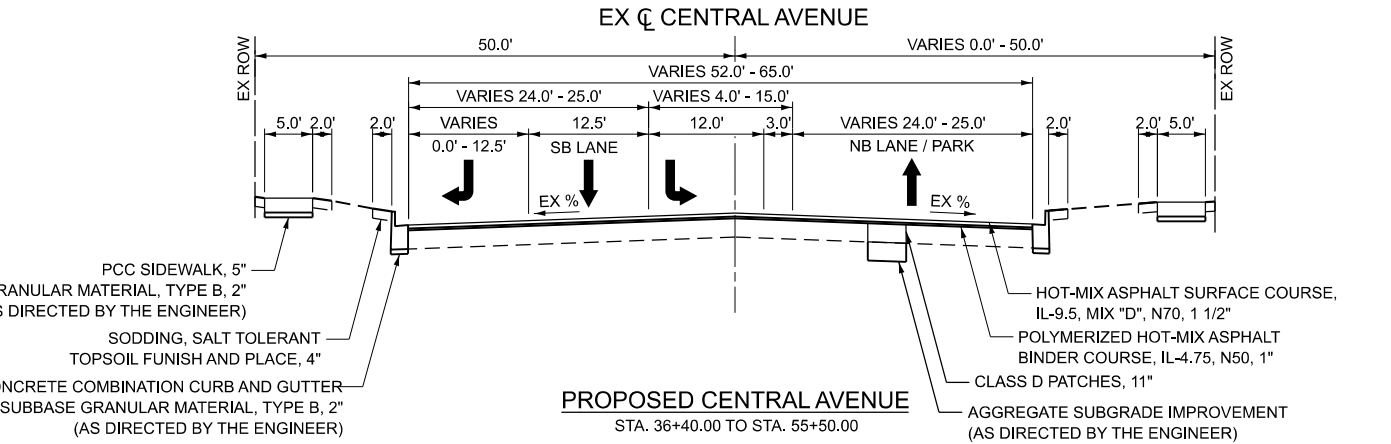
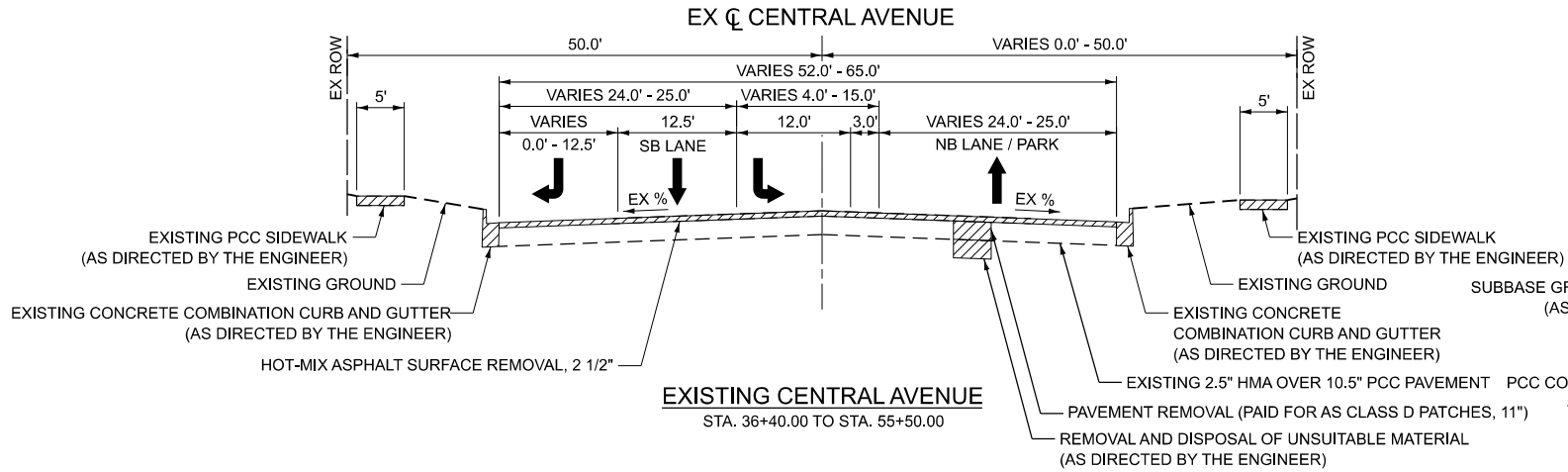
USER NAME =	aham	DESIGNED -	AMH	REVISED -	
		DRAWN -	AMH	REVISED -	
PLOT SCALE =	1" = 10'	CHECKED -	EPS	REVISED -	
PLOT DATE =	11/4/2024	DATE -	3/26/2025	REVISED -	

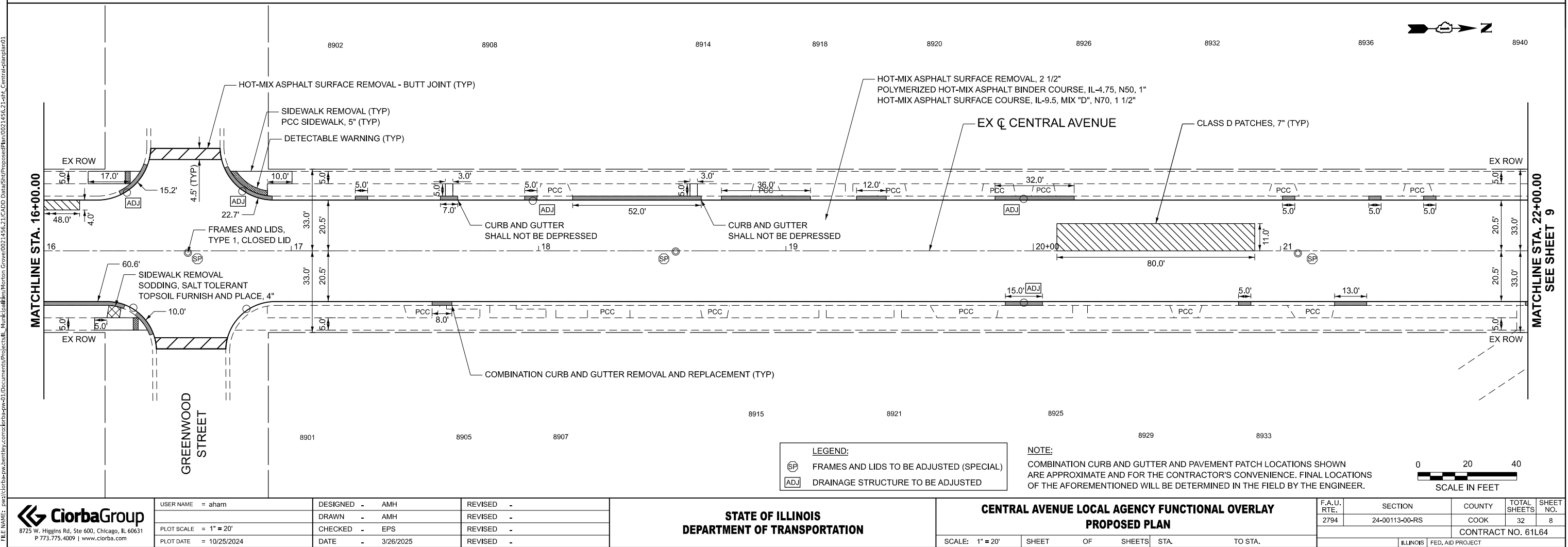
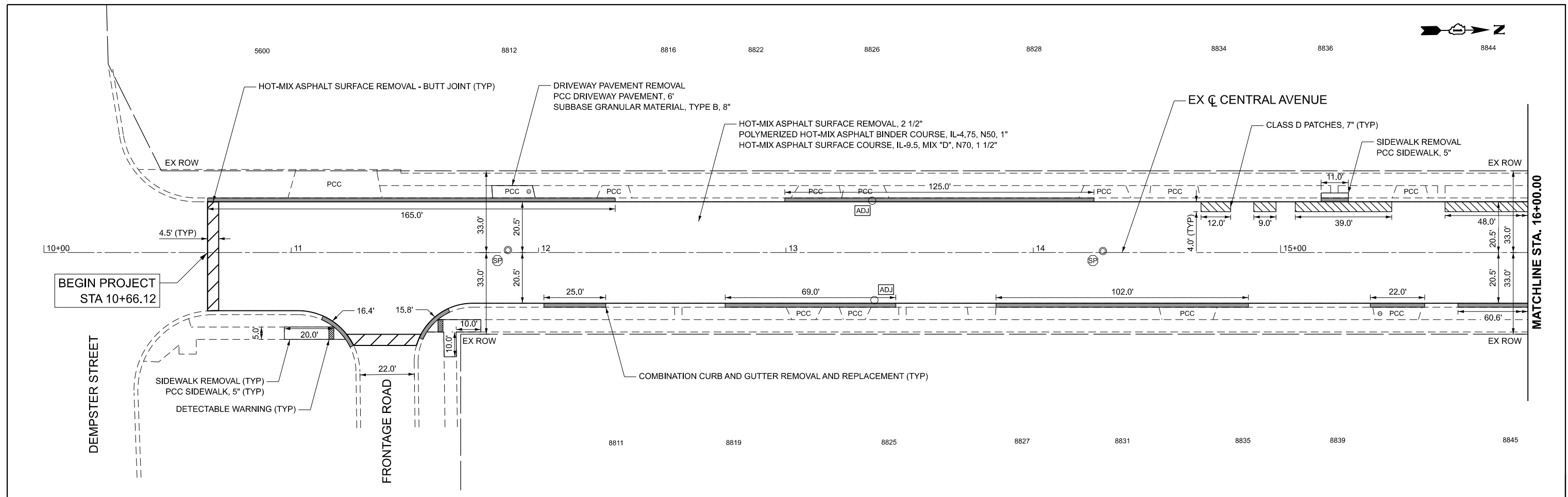
STATE OF ILLINOIS
DEPARTMENT OF TRANSPORTATION

CENTRAL AVENUE LOCAL AGENCY FUNCTIONAL OVERLAY
TYPICAL SECTIONS

SCALE: 1" = 10' SHEET OF SHEETS STA. TO STA.

F.A.U. RTE.	SECTION	COUNTY	TOTAL SHEETS	SHEET NO.
2794	24-00113-00-RS	COOK	32	7
CONTRACT NO. 61L64				
ILLINOIS FED. AID PROJECT				





DATE PLOTTED = 3/26/2025 12:36:28 PM
PEN TABLE = prof.tbl
PLOT CONFIG = IDOT_PDF_Netlayer_BW.ctb
FILE NAME = ProjCorba\pubentley.com\corba\proj\002145621\CAODD Data\SHY\ProposedPlan\002145621-1-ht_CentralAvenue02



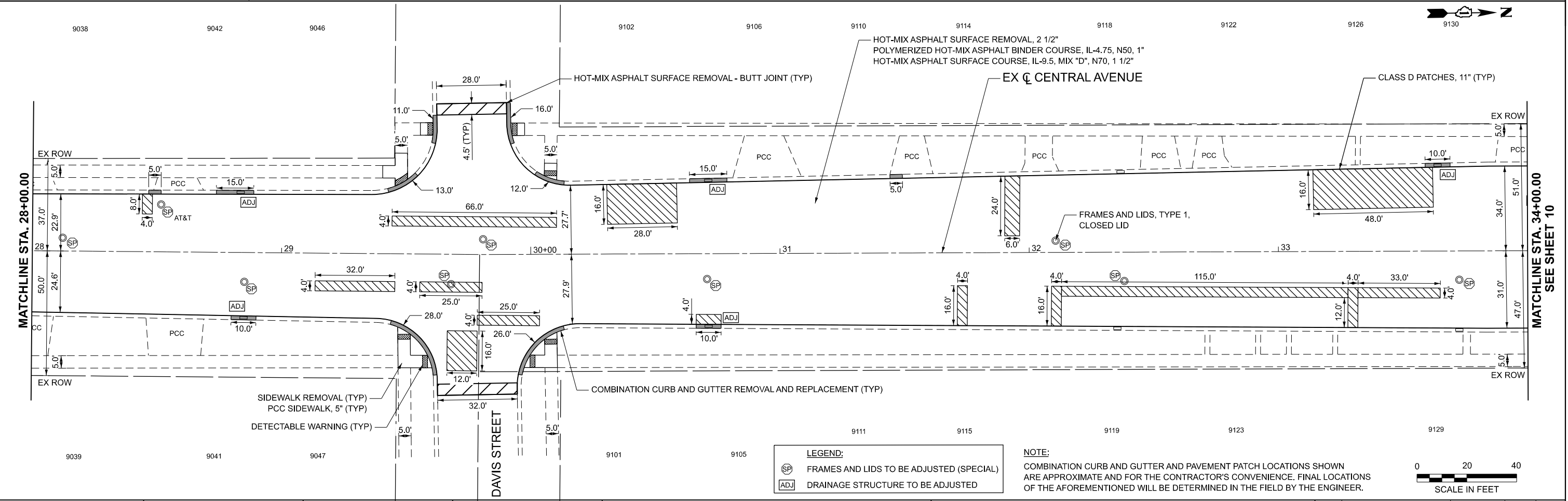
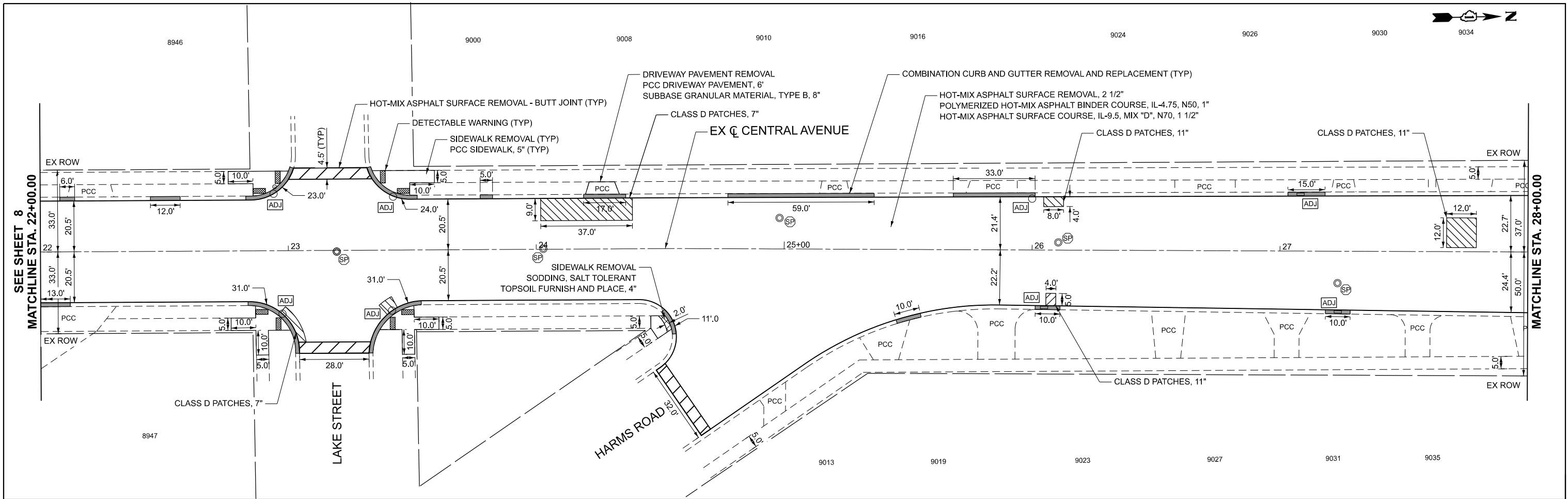
USER NAME	= aham	DESIGNED	- AMH	REVISED	-
		DRAWN	- AMH	REVISED	-
PLOT SCALE	= 1" = 20'	CHECKED	- EPS	REVISED	-
PLOT DATE	= 10/25/2024	DATE	- 3/26/2025	REVISED	-

STATE OF ILLINOIS
DEPARTMENT OF TRANSPORTATION

CENTRAL AVENUE LOCAL AGENCY FUNCTIONAL OVERLAY
PROPOSED PLAN

SCALE: 1" = 20' SHEET OF SHEETS STA. 22+00.00 TO STA. 34+00.00

F.A.U. RTE.	SECTION	COUNTY	TOTAL SHEETS	SHEET NO.
2794	24-00113-00-RS	COOK	32	9
CONTRACT NO. 61L64				
ILLINOIS FED. AID PROJECT				

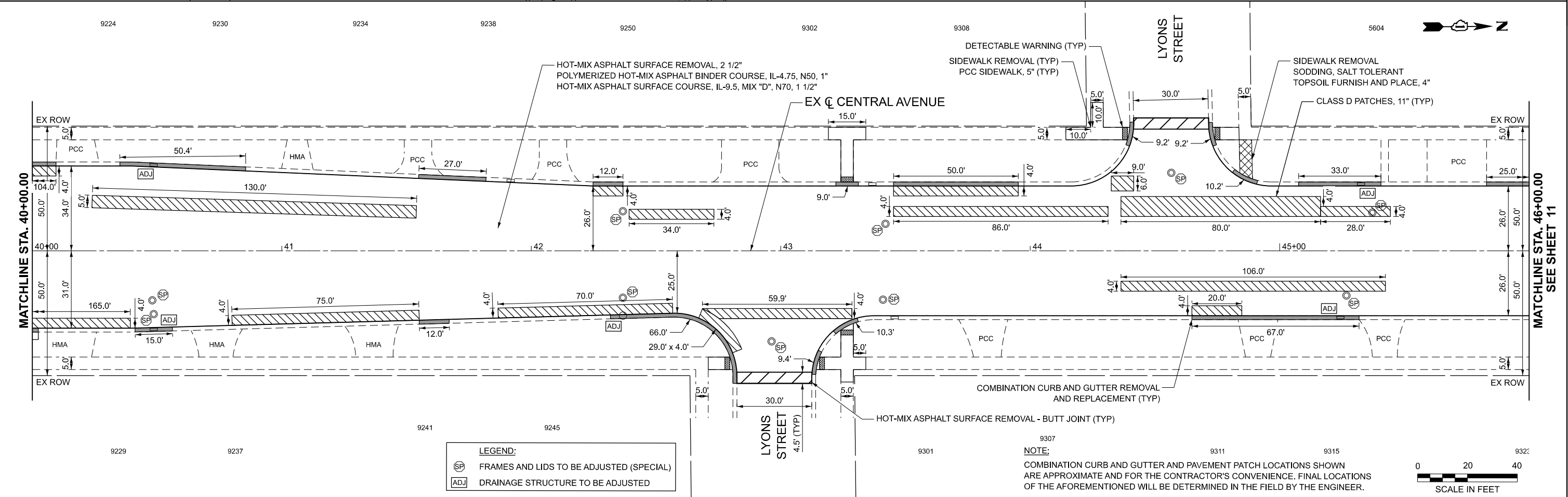
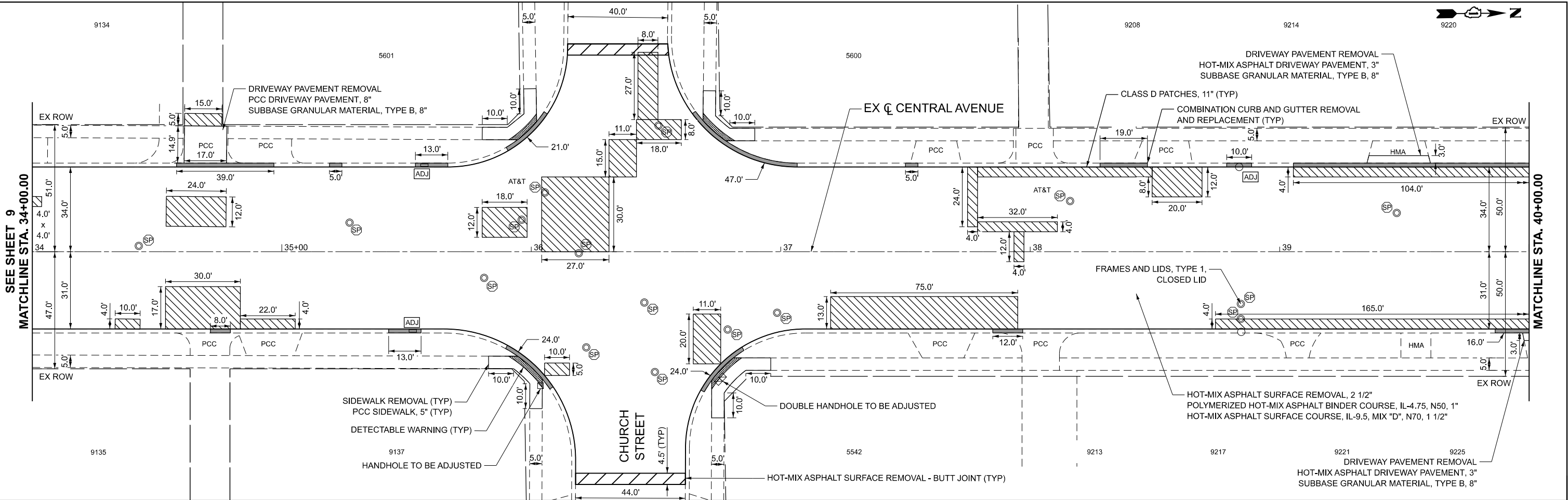


LEGEND:	
SP	FRAMES AND LIDS TO BE ADJUSTED (SPECIAL)
ADJ	DRAINAGE STRUCTURE TO BE ADJUSTED

NOTE:
COMBINATION CURB AND GUTTER AND PAVEMENT PATCH LOCATIONS SHOWN ARE APPROXIMATE AND FOR THE CONTRACTOR'S CONVENIENCE. FINAL LOCATIONS OF THE AFOREMENTIONED WILL BE DETERMINED IN THE FIELD BY THE ENGINEER.



DATE PLOTTED = 3/26/2025 12:36:34 PM
PEN TABLE = prof#_tbl
PLOT CONFIG = DOT_PDF_Netlayer_BW.ctb
FILE NAME = pro\corporate\benley\projects\Ill_Muni\ja\Biller\ Morton Grove\002145621\CAODD Data\SHV\ProposedPlan\002145621-1cht_CentralAvenue\03



USER NAME = aham	DESIGNED - AMH	REVISED -
	DRAWN - AMH	REVISED -
PLOT SCALE = 1" = 20'	CHECKED - EPS	REVISED -
PLOT DATE = 10/25/2024	DATE - 3/26/2025	REVISED -

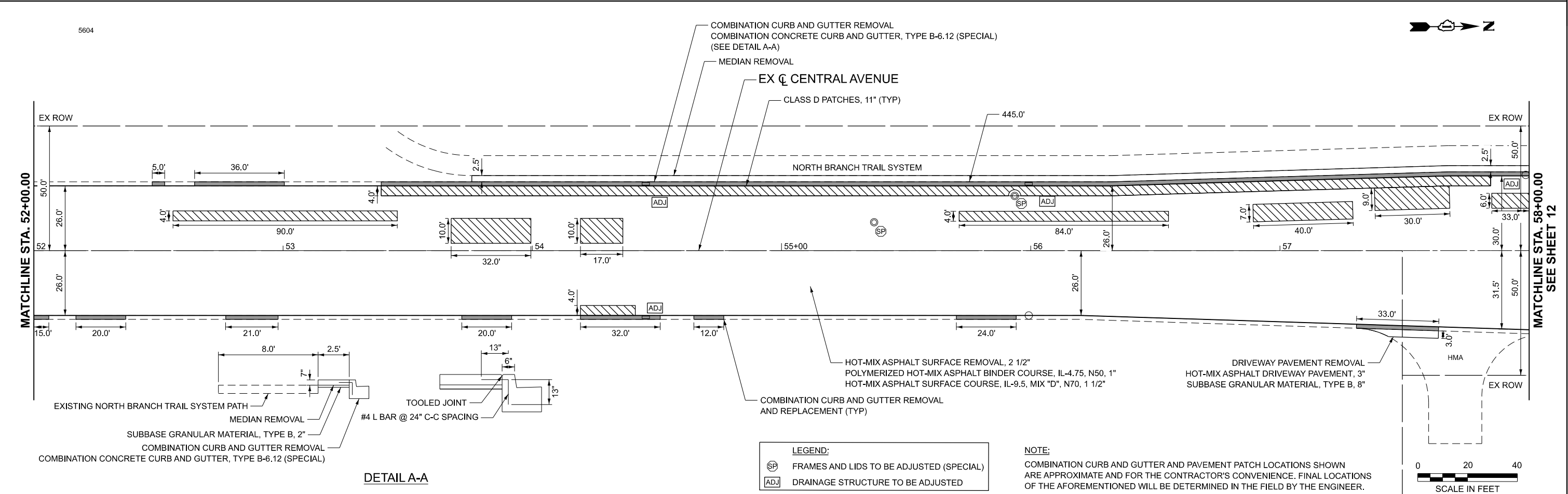
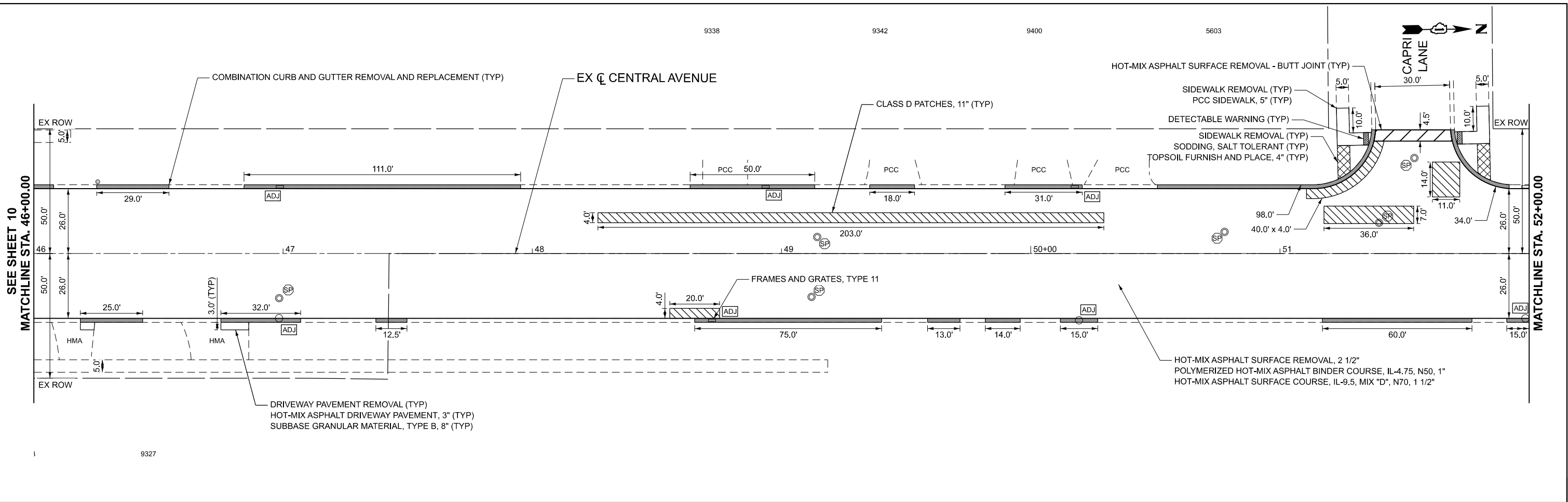
STATE OF ILLINOIS
DEPARTMENT OF TRANSPORTATION

CENTRAL AVENUE LOCAL AGENCY FUNCTIONAL OVERLAY
PROPOSED PLAN

SCALE: 1" = 20' SHEET OF SHEETS STA. 34+00.00 TO STA. 46+00.00

F.A.U. RTE.	SECTION	COUNTY	TOTAL SHEETS	SHEET NO.
2794	24-00113-00-RS	COOK	32	10
CONTRACT NO. 61L64				
ILLINOIS FED. AID PROJECT				

DATE PLOTTED = 3/26/2025 12:36:41 PM
PEN TABLE = 3/26/2025 12:36:41 PM
PLOT CONFIG = 100%
FILE NAME = C:\Users\aham\OneDrive\Documents\Projects\Illinois\Central Avenue\Central Avenue\Central Avenue.dwg
PROJECT = 24-00113-00-RS
SHEET = 11



<div>CiorbaGroup</div> <div>8725 W. Higgins Rd, Ste 600, Chicago, IL 60631 P 773.775.4009 www.ciorba.com</div>	USER NAME = aham		DESIGNED - AMH		REVISED -		<div>STATE OF ILLINOIS DEPARTMENT OF TRANSPORTATION</div>						CENTRAL AVENUE LOCAL AGENCY FUNCTIONAL OVERLAY PROPOSED PLAN						F.A.U. RTE.	SECTION		COUNTY	TOTAL SHEETS	SHEET NO.			
	PLOT SCALE = 1" = 20'		DRAWN - AMH		REVISED -								2794	24-00113-00-RS		COOK	32	11									
	PLOT DATE = 10/25/2024		CHECKED - EPS		REVISED -		CONTRACT NO. 61L64										ILLINOIS FED. AID PROJECT										
	DATE = 3/26/2025		REVISED -		SCALE: 1" = 20'										SHEET	OF	SHEETS	STA. 46+00.00	TO STA. 58+00.00								

DATE PLOTTED = 3/26/2025 12:36:47 PM
PEN TABLE = prof#.tbl
PLOT CONFIG = DDT_PDF_NetLayers_BW.ctb
FILE NAME = C:\Users\jhamilton\Documents\Projects\IL_Municipal\Bentley\Considerback\01\Documents\Projects\IL_Municipal\Bentley\Considerback\01\0021456.21\cadd\CentralAvenue05



8725 W. Higgins Rd, Ste 600, Chicago, IL 60631
P 773.775.4009 | www.ciorba.com

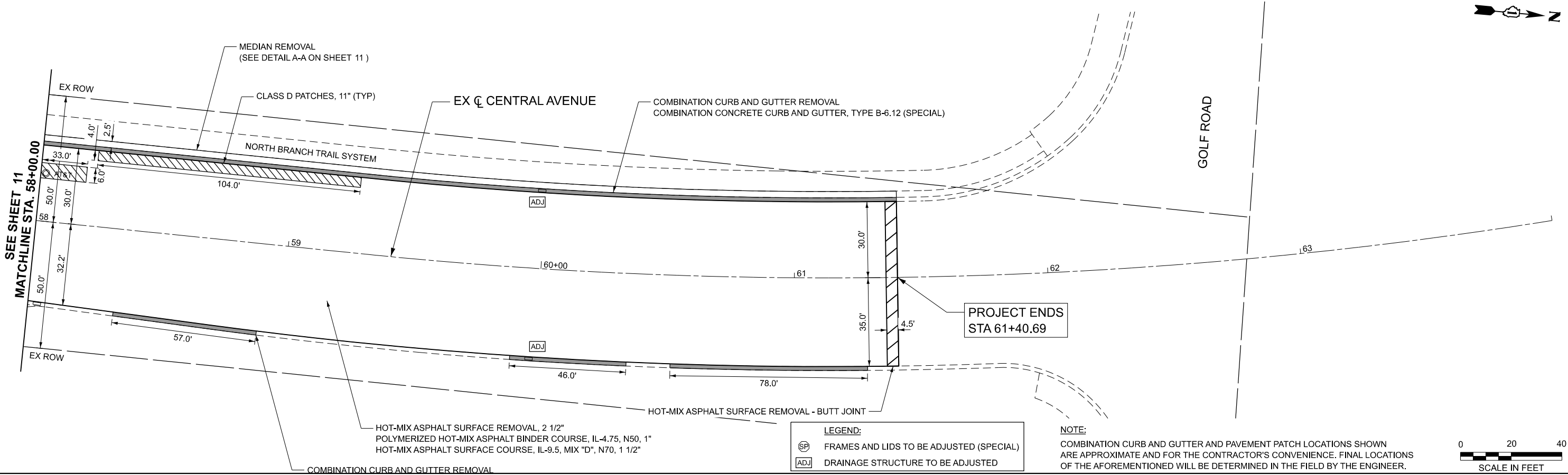
USER NAME	= aham	DESIGNED	- AMH	REVISED	-
		DRAWN	- AMH	REVISED	-
PLOT SCALE	= 1" = 20'	CHECKED	- EPS	REVISED	-
PLOT DATE	= 10/25/2024	DATE	- 3/26/2025	REVISED	-

STATE OF ILLINOIS
DEPARTMENT OF TRANSPORTATION

CENTRAL AVENUE LOCAL AGENCY FUNCTIONAL OVERLAY
PROPOSED PLAN

SCALE: 1" = 20' SHEET OF SHEETS STA. 58+00.00 TO STA. 64+00.00

F.A.U. RTE.	SECTION	COUNTY	TOTAL SHEETS	SHEET NO.
2794	24-00113-00-RS	COOK	32	12
CONTRACT NO. 61L64				
ILLINOIS FED. AID PROJECT				



STAGING AND TRAFFIC CONTROL GENERAL NOTES

1. STAGING WILL BE DONE SEQUENTIALLY AS SHOWN IN THE STAGING AND TRAFFIC SEQUENCE TO MAINTAIN TRAFFIC THROUGHOUT THE AREA.
2. WORK WILL BE DONE ALONG ONE SIDE OF THE ROADWAY AT A TIME.
3. THE CONTRACTOR SHALL NOTIFY THE ENGINEER 48 HOURS IN ADVANCE OF TRAFFIC CONTROL SWITCH BETWEEN STAGES. THE CONTRACTOR SHALL ALSO CONFIRM THE PLANNED STAGE CHANGE WITH THE ENGINEER 24 HOURS PRIOR.
4. PRIOR TO REMOVING TRAFFIC CONTROL AND OPENING CLOSED PAVEMENT AREAS TO TRAFFIC, THE CONTRACTOR SHALL SWEEP THE PAVEMENT SURFACE CLEAN. THIS WORK WILL NOT BE PAID FOR SEPARATELY BUT SHALL BE INCLUDED IN THE COST FOR TRAFFIC CONTROL AND PROTECTION PAY ITEMS.
5. THE CONTRACTOR SHALL GAP CONSTRUCT THE PAVEMENT AND ENTRANCES TO MAINTAIN ACCESS.
6. PAVEMENT, CURB, SIDEWALK AND DRIVEWAYS TO BE REMOVED MUST BE COMPLETELY REMOVED FROM THE SITE BY THE END OF THE DAY. NO REMOVAL ITEMS MAY BE STORED ON SITE.
7. DRIVEWAY ENTRANCE SIGNING (TC-26) WILL BE INSTALLED AT EACH COMMERCIAL ENTRANCE ALONG CENTRAL AVENUE WITHIN THE PROJECT LIMITS.
8. WORKER SIGNS (W21-1) SHALL BE REMOVED OR COVERED WHEN WORKERS ARE NOT PRESENT FOR MORE THAN ONE HOUR.

STAGING AND TRAFFIC SEQUENCE OF CONSTRUCTION

STAGE 1

CONSTRUCTION

1. REMOVE EXISTING CURB AND GUTTER AND SIDEWALK ALONG THE EAST SIDE OF CENTRAL AVENUE.
2. DRAINAGE STRUCTURES WITHIN CURB REMOVAL LIMITS TO BE ADJUSTED.
3. FRAME AND POUR NEW CURB AND GUTTER AND SIDEWALK ALONG THE EAST SIDE OF CENTRAL AVENUE.

TRAFFIC CONTROL

1. MAINTAIN TRAFFIC UTILIZING STANDARDS 701427, 701501, 701602, 701606, 701611, 701701 AND 701801.
2. WORK AT ENTRANCES / ALLEYS WILL BE GAPPED TO ALLOW ACCESS FOR RESIDENTS.

STAGE 2

CONSTRUCTION

1. REMOVE EXISTING CURB AND GUTTER AND SIDEWALK ALONG THE WEST SIDE OF CENTRAL AVENUE.
2. DRAINAGE STRUCTURES WITHIN CURB REMOVAL LIMITS TO BE ADJUSTED.
3. FRAME AND POUR NEW CURB AND GUTTER AND SIDEWALK ALONG THE WEST SIDE OF CENTRAL AVENUE.

TRAFFIC CONTROL

1. MAINTAIN TRAFFIC UTILIZING STANDARDS 701427, 701501, 701602, 701606, 701611, 701701 AND 701801.
2. WORK AT ENTRANCES / ALLEYS WILL BE GAPPED TO ALLOW ACCESS FOR RESIDENTS.

STAGE 3

CONSTRUCTION

1. STRUCTURES WITHIN MAINLINE CENTRAL AVENUE WILL BE LOWERED PER IDOT D1 DETAIL BD-08.
2. MILL CENTRAL AVENUE.
3. APPLY TEMPORARY PAVEMENT MARKINGS.

TRAFFIC CONTROL

1. MAINTAIN TRAFFIC UTILIZING STANDARDS 701311, 701427, 701501, 701602, 701606, 701611, 701701 AND 701801.

STAGE 4

CONSTRUCTION

1. PAVEMENT PATCHING
2. STRUCTURES WITHIN MAINLINE CENTRAL AVENUE TO BE ADJUSTED.

TRAFFIC CONTROL

1. MAINTAIN TRAFFIC UTILIZING STANDARDS 701311, 701427, 701501, 701602, 701606, 701611, 701701 AND 701801.

STAGE 5

CONSTRUCTION

1. PAVE BINDER COURSE.
2. PAVE SURFACE COURSE.
3. ESTABLISH PERMANENT PAVEMENT MARKINGS.

TRAFFIC CONTROL

1. MAINTAIN TRAFFIC UTILIZING STANDARDS 701311, 701427, 701501, 701602, 701606, 701611, 701701 AND 701801.

<div><div><div>Ciorba Group</div><div>8725 W. Higgins Rd, Ste 600, Chicago, IL 60631 P 773.775.4009 www.ciorba.com</div></div></div>	USER NAME = aharn	DESIGNED - AMH	REVISED -	<div>STATE OF ILLINOIS</div> <div>DEPARTMENT OF TRANSPORTATION</div>	<div>CENTRAL AVENUE LOCAL AGENCY FUNCTIONAL OVERLAY</div> <div>MAINTENANCE OF TRAFFIC GENERAL NOTES AND STAGING</div>					F.A.U. RTE.	SECTION	COUNTY	TOTAL SHEETS	SHEET NO.
	PLOT SCALE = 1" = 10'	CHECKED - EPS	REVISED -							2794	24-00113-00-RS	COOK	32	13
	PLOT DATE = 11/4/2024	DATE - 3/26/2025	REVISED -		CONTRACT NO. 61L64									
	SCALE: NTA SHEET OF SHEETS STA. TO STA.													

DATE PLOTTED = 3/26/2025 12:37:06 PM
PEN TABLE = prof.tbl
PLOT CONFIG = DOT_PDF_Netlayer_BW.ctb
FILE NAME = procoradpubentley.com\coradpw-d01\Documents\Projects\ILL_Municipal\Hickory/Morton Grove\0021456.21\CAODD Data\SHV\Shops\Signing\0021456.21-shv-Central-002



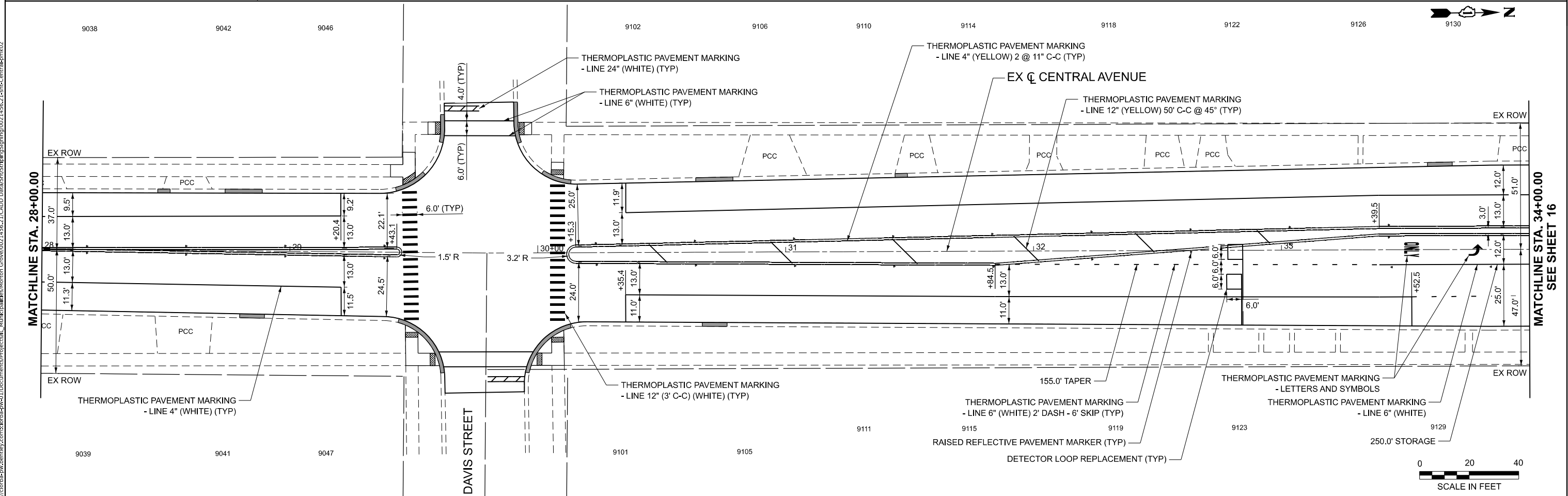
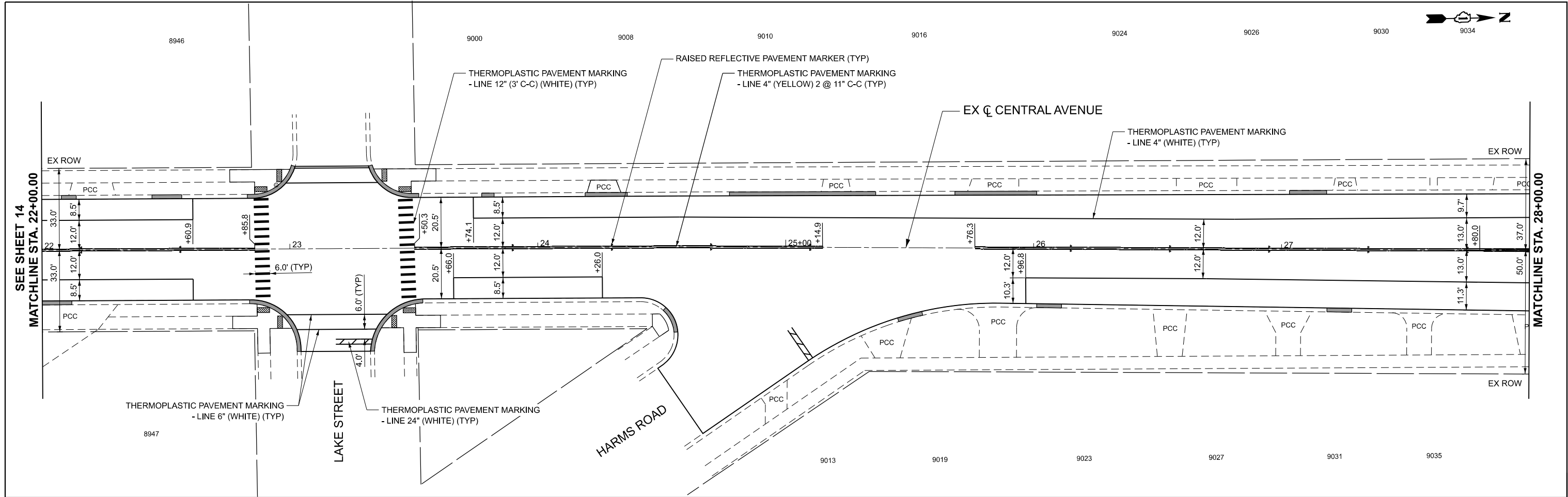
USER NAME	= aham	DESIGNED	- AMH	REVISED	-
		DRAWN	- AMH	REVISED	-
PLOT SCALE	= 1" = 20'	CHECKED	- EPS	REVISED	-
PLOT DATE	= 10/25/2024	DATE	- 3/26/2025	REVISED	-

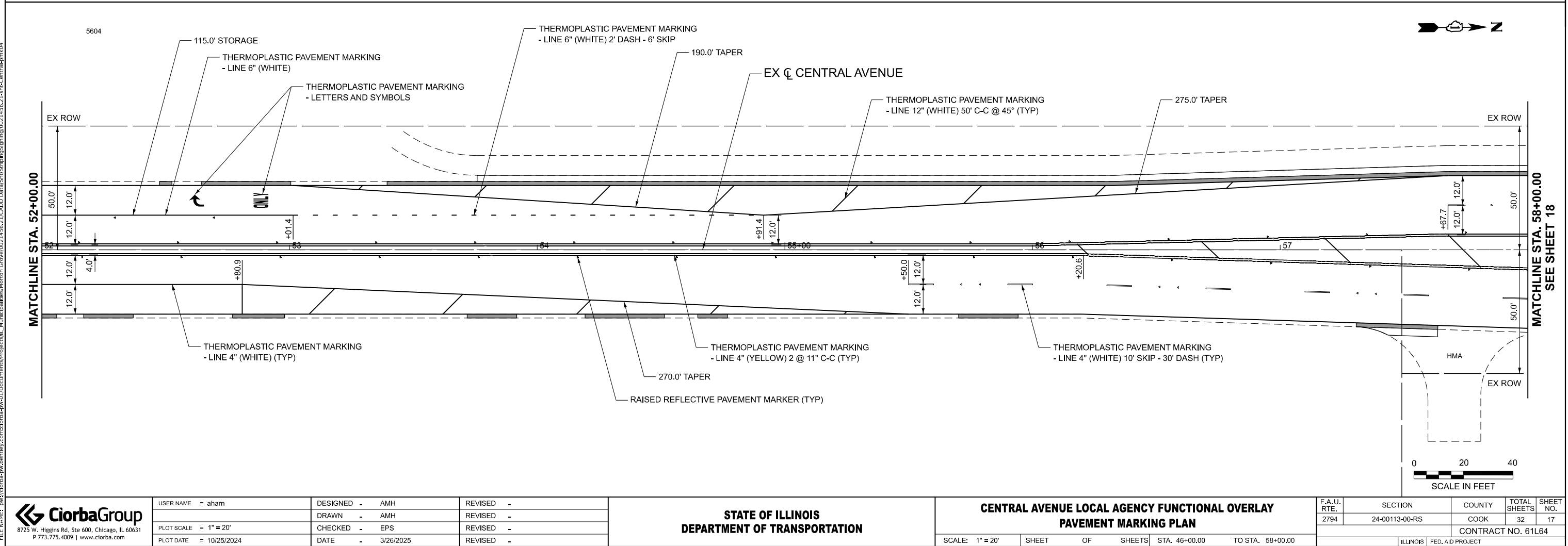
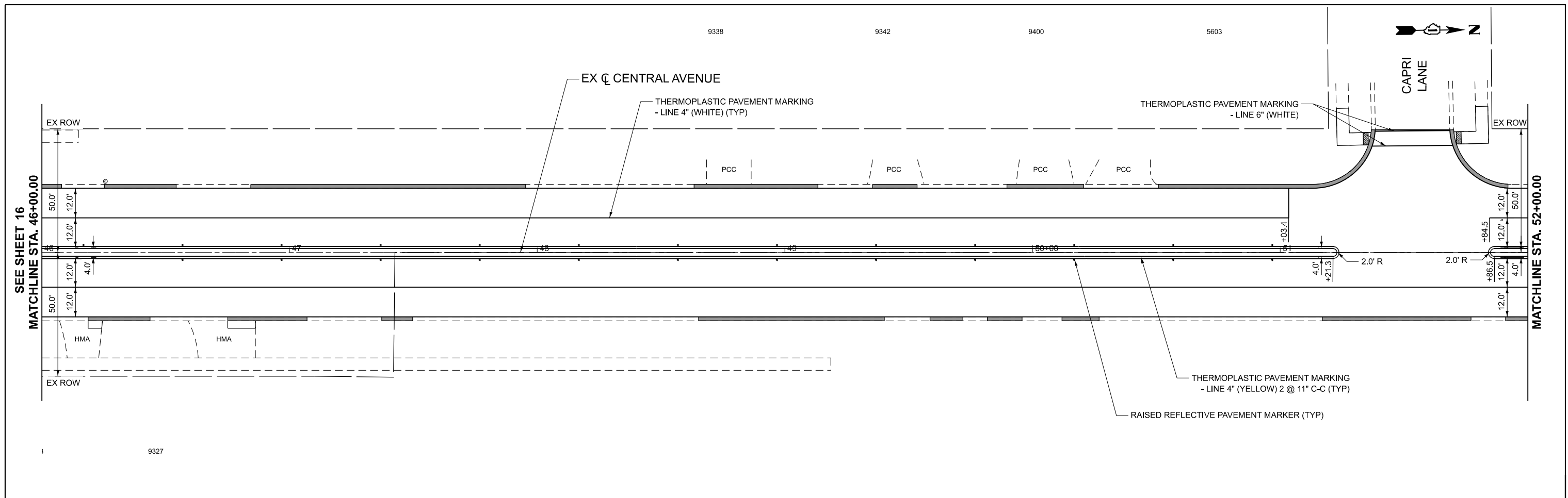
STATE OF ILLINOIS
DEPARTMENT OF TRANSPORTATION

CENTRAL AVENUE LOCAL AGENCY FUNCTIONAL OVERLAY
PAVEMENT MARKING PLAN

SCALE: 1" = 20' SHEET OF SHEETS STA. 22+00.00 TO STA. 34+00.00

F.A.U. RTE.	SECTION	COUNTY	TOTAL SHEETS	SHEET NO.
2794	24-00113-00-RS	COOK	32	15
CONTRACT NO. 61L64				
ILLINOIS FED. AID PROJECT				





DATE PLOTTED = 3/26/2025 12:37:38 PM
PEN TABLE = prof.tbl
PLOT CONFIG = DDT_PDF_Nlayers_BW.ctb
FILE NAME = C:\Users\jacob\Documents\Projects\Ill_Munk\jacob\morton_grove\002145621\cadd_data\shu\morton_grove\002145621\cadd_data\shu\morton_grove\002145621.dgn

USER NAME =	aham	DESIGNED -	AMH	REVISED -	
PLOT SCALE =	1" = 20'	DRAWN -	AMH	REVISED -	
PLOT DATE =	11/4/2024	CHECKED -	EPS	REVISED -	
		DATE -	3/26/2025	REVISED -	

FOR INFORMATION ONLY

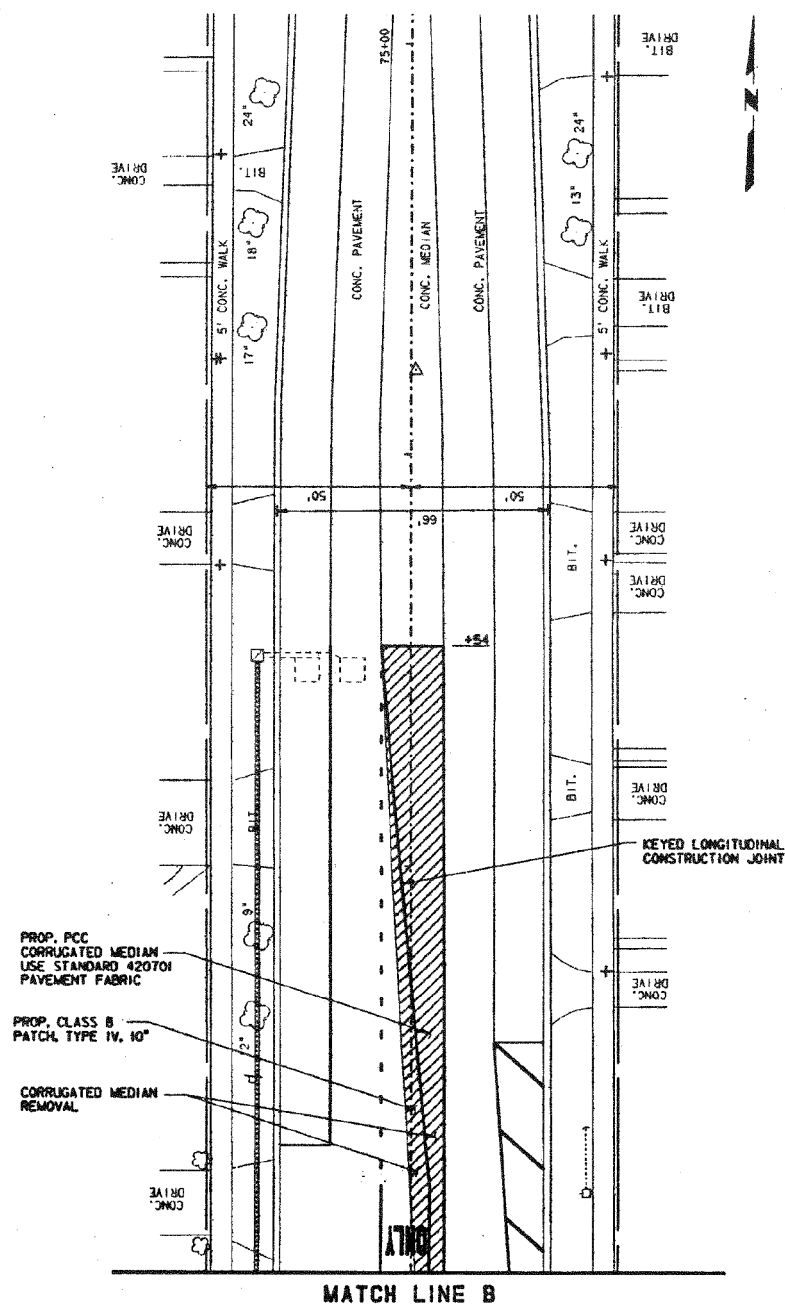
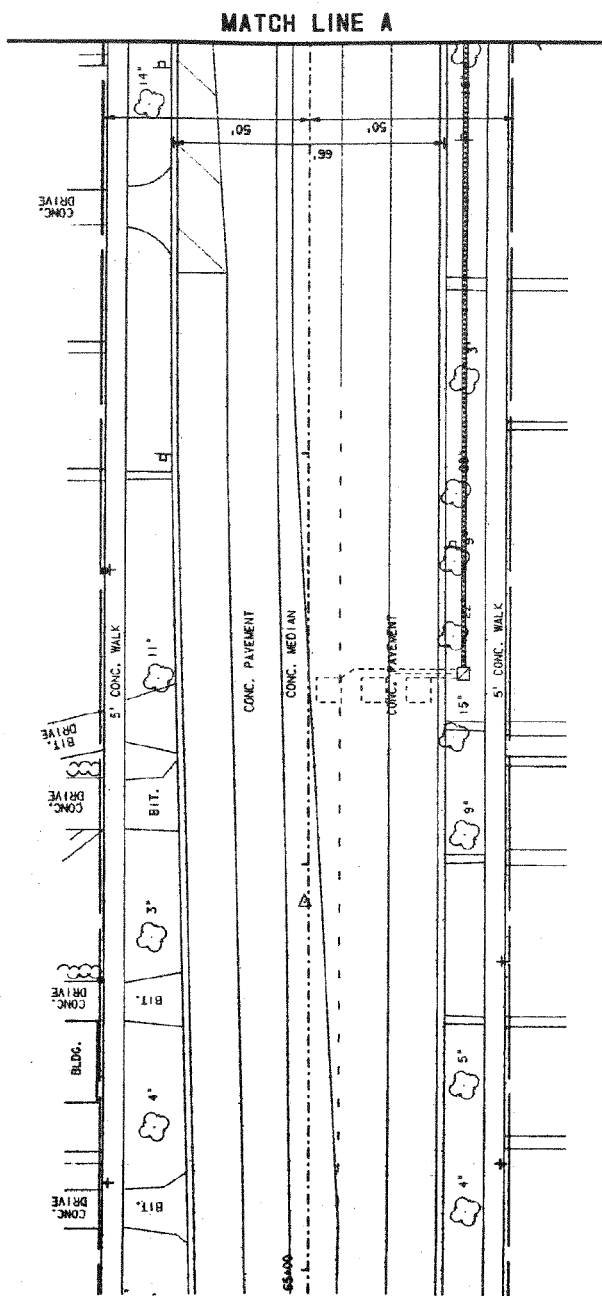
DGN: s:\work\35017\cadd\draw\nga\traf03.dgn DATE: Sun Oct 24 21:15:21 1999

PLAN	DATE	BY	CHK
NOTE BOOK	11/4/2024	aham	eps

PROFILE	DATE	BY	CHK
NOTE BOOK	11/4/2024	aham	eps

- CONTROLLER
SERVICE INSTALLATION
SIGNAL HEAD
SIGNAL HEAD WITH BACKPLATE
SIGNAL HEAD, PEDESTRIAN
SIGNAL POST
MAST ARM ASSEMBLY AND POLE, STEEL
HANDHOLE
HEAVY DUTY HANDHOLE
DOUBLE HANDHOLE
G.S. CONDUIT IN TRENCH OR PUSHED
PEDESTRIAN PUSHBUTTON DETECTOR
DETECTOR LOOP
CONCRETE JUNCTION BOX
CAST IRON JUNCTION BOX
COMMON TRENCH
MAST ARM ASSEMBLY AND POLE, ALUMINUM
EMERGENCY VEHICLE SYSTEM DETECTOR
CONFIRMATION BEACON
SIGNAL HEAD OPTICALLY PROGRAMMED
CONDUIT SPLICE
WOOD POLE
RACEWAY FOR MAGNETIC DETECTOR, TYPE I OR TYPE II
VEHICLE DETECTOR, NON COMPENSATED MAGNETIC TYPE
RAILROAD CONTROL CABINET

PROPOSED	EXISTING



REVISIONS	
NAME	DATE

VILLAGE OF MORTON GROVE
TRAFFIC SIGNAL MODIFICATION PLAN
CHURCH STREET AND
CENTRAL ROAD / HARMS ROAD

SCALE: 1"=20'
DATE: NOVEMBER, 1999

DRAWN BY: CJO
CHECKED BY: JK

EARTH TECH
A tyco INTERNATIONAL LTD. COMPANY

DATE PLOTTED = 3/26/2025 12:37:46 PM
PEN TABLE = 3/26/2025 12:37:46 PM
PLOT CONFIG = 3/26/2025 12:37:46 PM
FILE NAME = 3/26/2025 12:37:46 PM
C:\Users\aham\OneDrive\Documents\Projects\Illinois\Central Avenue Local Agency Functional Overlay\Central Avenue and Church Street Cable Plan.dgn



USER NAME	= aham	DESIGNED	- AMH	REVISED	-
DRAWN	- AMH	REVISED	-		
PLOT SCALE	= 1" = 20'	CHECKED	- EPS	REVISED	-
PLOT DATE	= 11/4/2024	DATE	- 3/26/2025	REVISED	-

STATE OF ILLINOIS
DEPARTMENT OF TRANSPORTATION

CENTRAL AVENUE LOCAL AGENCY FUNCTIONAL OVERLAY
CENTRAL AVENUE AND CHURCH STREET CABLE PLAN

SCALE: NTS SHEET OF SHEETS STA. TO STA.

F.A.U. RTE.	SECTION	COUNTY	TOTAL SHEETS	SHEET NO.
2794	24-00113-00-RS	COOK	32	21
CONTRACT NO. 61L64				
ILLINOIS FED. AID PROJECT				

SCHEDULE OF QUANTITIES

ELECTRIC CABLE IN CONDUIT, SIGNAL, NO. 14 3C	FOOT	958
ELECTRIC CABLE IN CONDUIT, SIGNAL, NO. 14 5C	FOOT	1268
ELECTRIC CABLE IN CONDUIT, LEAD-IN, NO. 14, 1 PAIR	FOOT	2048
ELECTRIC CABLE IN CONDUIT, NO. 20 3C, TWISTED, SHIELDED	FOOT	149
TRAFFIC SIGNAL POST, GALVANIZED STEEL, 18 FT.	EACH	1
CONCRETE FOUNDATION, TYPE A	FOOT	4
SIGNAL HEAD, 1-FACE, 3-SECTION, BRACKET MOUNTED	EACH	10
SIGNAL HEAD, 1-FACE, 5-SECTION, BRACKET MOUNTED	EACH	1
PEDESTRIAN SIGNAL HEAD, 1-FACE, BRACKET MOUNTED	EACH	8
LIGHT DETECTOR	EACH	2
LIGHT DETECTOR AMPLIFIER	EACH	1
FULL ACTUATED CONTROLLER IN EXISTING CABINET	EACH	1
PEDESTRIAN PUSH-BUTTON	EACH	8
TRENCH AND BACKFILL FOR ELECTRICAL WORK	FOOT	213
REMOVE EXISTING TRAFFIC SIGNAL EQUIPMENT	EACH	1
REMOVE EXISTING HANDHOLE	EACH	1
REMOVE EXISTING CONCRETE FOUNDATION	EACH	1
DETECTOR LOOP, TYPE I	FOOT	363
INDUCTIVE LOOP DETECTOR	EACH	4
PAINT EXISTING TRAFFIC SIGNAL EQUIPMENT	EACH	1
CORRUGATED MEDIAN	SO FT	1529
CLASS B PATCH, TYPE IV, 10"	SO YD	53
PAVEMENT REMOVAL	SO YD	46
CORRUGATED MEDIAN REMOVAL	SO FT	2008
TIE BARS	EACH	104
DRILL EXISTING HANDHOLE	EACH	4
CONDUIT IN TRENCH, 2" DIA., GALVANIZED STEEL	FOOT	193
CONDUIT IN TRENCH, 2 1/2" DIA., GALVANIZED STEEL	FOOT	20
CONDUIT PUSHED, 2" DIA., GALVANIZED STEEL	FOOT	43
CONDUIT PUSHED, 4" DIA., GALVANIZED STEEL	FOOT	73
ELECTRIC CABLE IN CONDUIT, SIGNAL, NO. 14, 2C	FOOT	803
ELECTRIC CABLE IN CONDUIT, SIGNAL, NO. 14, 7C	FOOT	411
REMOVE ELECTRIC CABLE FROM CONDUIT	FOOT	4585
REMOVE AND REINSTALL ELECTRIC CABLE FROM CONDUIT	FOOT	4372
CONCRETE HAND HOLE	EACH	1
PAVEMENT FABRIC	SO YD	223

CABLE PLAN LEGEND

EXISTING PROPOSED

12" TRAFFIC SIGNAL SECTION

12" PEDESTRIAN SIGNAL SECTION

CONTROLLER CABINET

SERVICE INSTALLATION

VEHICLE DETECTOR, INDUCTION LOOP

MAGNETIC DETECTOR

EMERGENCY VEHICLE LIGHT DETECTOR

CONFIRMATION BEACON

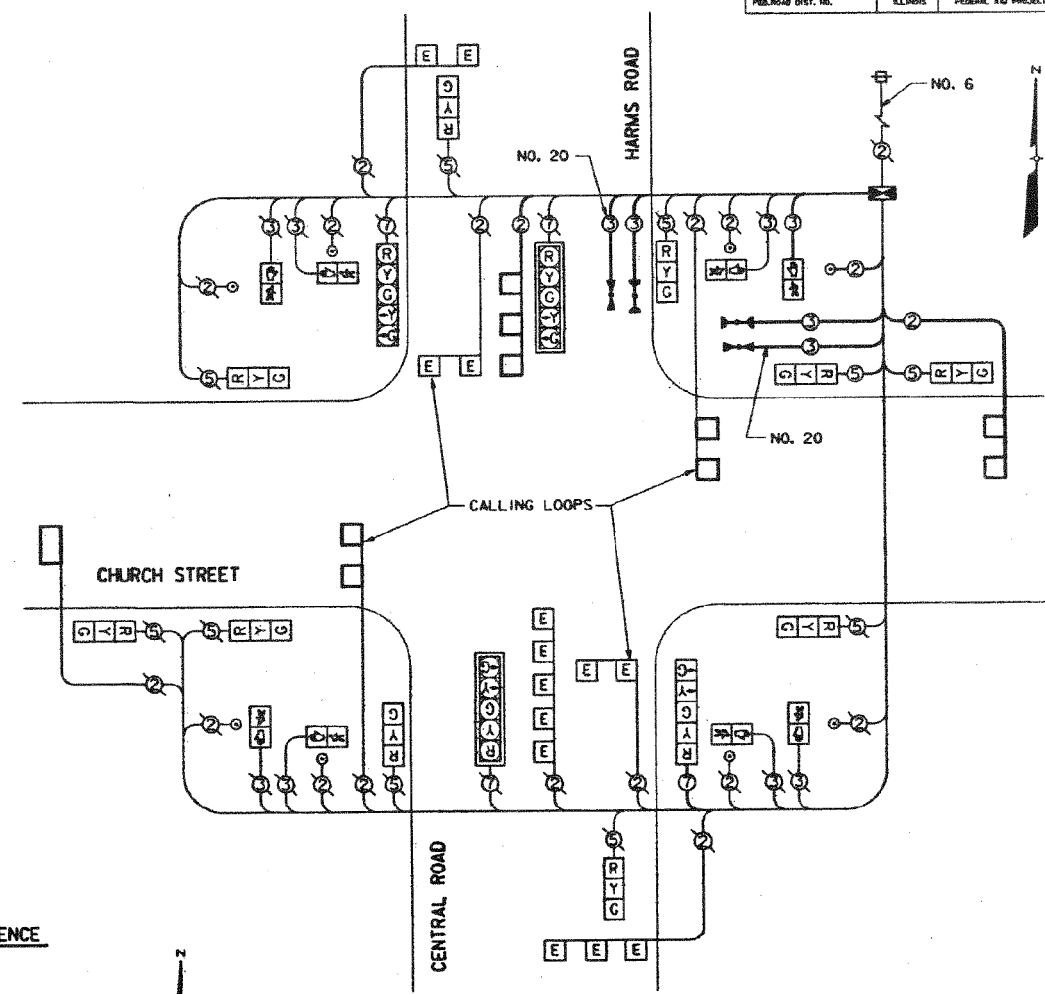
PUSHBUTTON DETECTOR

2 DENOTES NUMBER OF CONDUCTORS. ALL CABLE NO. 14 EXCEPT AS INDICATED. ALL LOOP DETECTOR CABLE TO BE SHIELDED.

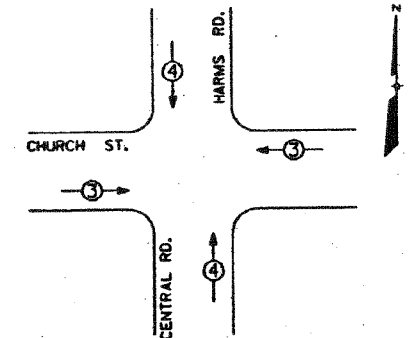
SIGNAL FACE WITH BACKPLATE

"P" INDICATES PROGRAMMED HEAD.

"E" INDICATES EXISTING SIGNAL HEAD OR EXISTING PEDESTRIAN SIGNAL HEAD.



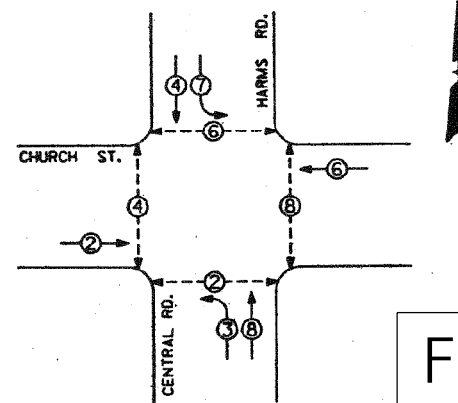
CABLE PLAN
N.T.S.



PROPOSED PRIORITY LANES		
PRIORITY LANE	3	4
INTERVAL		
MOVEMENT	←	↑

EMERGENCY VEHICLE PREEMPTION SEQUENCE
FOR DUAL ENTRY OPERATION - ALL LEGS

CONTROLLER SEQUENCE



LEGEND

- VEHICULAR MOVEMENT
- PEDESTRIAN MOVEMENT
- * NUMBER REFERS TO ASSOCIATED PHASE

EXISTING & PROPOSED
PHASE DESIGNATION DIAGRAM

DUAL ENTRY - ALL LEGS
PROTECTED / PERMITTED LEFT TURN PHASING

FOR INFORMATION ONLY

REVISIONS	
NAME	DATE

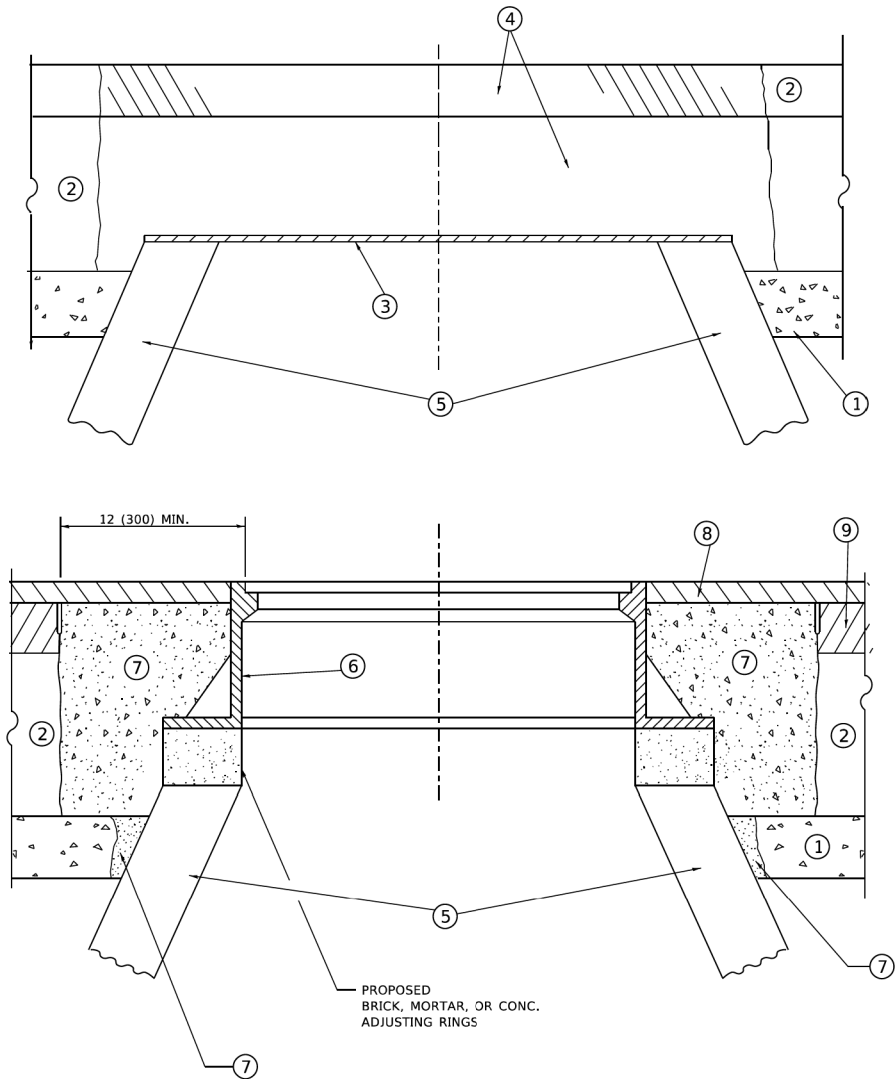
VILLAGE OF MORTON GROVE
SCHEDULE OF QUANTITIES, CABLE PLAN
AND PHASE DESIGNATION DIAGRAM
CHURCH STREET AND
HARMS ROAD / CENTRAL ROAD

SCALE: N.T.S. DRAWN BY: CJO
DATE: NOVEMBER, 1999 CHECKED BY: JK

EARTH TECH
A CECO INTERNATIONAL LTD. COMPANY

DATE PLOTTED = 3/26/2025 12:37:54 PM
PEN TABLE = 3/26/2025 12:37:54 PM
PLOT CONFIG = DOT_PDF_NetLayer_BW.ctb
FILE NAME = C:\Users\aham\OneDrive\Documents\Projects\Illinois\Central Avenue Local Agency Functional Overlay\District One Details\BD-08.dgn
FILE NAME = C:\Users\aham\OneDrive\Documents\Projects\Illinois\Central Avenue Local Agency Functional Overlay\District One Details\BD-08.dgn

MODEL: Default
FILE NAME: W:\d1b08.dgn



**DETAILS FOR FRAMES AND LIDS ADJUSTMENT
WITH MILLING**

NOTES

- EXISTING BROKEN FRAMES AND LIDS SHALL BE REMOVED AND DISPOSED OF BY THE CONTRACTOR AND SHALL BE REPLACED AS DIRECTED BY THE ENGINEER. REPLACEMENT FRAMES AND LIDS WILL BE PAID FOR IN ACCORDANCE WITH ARTICLE 109.04 OF THE STANDARD SPECIFICATIONS UNLESS A SEPARATE PAY ITEM HAS BEEN PROVIDED.
- IF THE EXISTING LIDS ARE OPEN, THE FRAME WILL BE ADJUSTED TO THE ELEVATION OF THE MILLED PAVEMENT SURFACE PRIOR TO THE MILLING OPERATION. THE FRAME WILL NOT BE REMOVED AND COVERED BY THE METAL PLATE.
- CITY OF CHICAGO CASTINGS ARE THE PROPERTY OF THE CITY AND THE CONTRACTOR SHALL NOTIFY THE CITY FOR REMOVAL AND DISPOSITION OF THE CASTINGS.
- THE METAL PLATE USED TO COVER THE STRUCTURE SHALL REMAIN THE PROPERTY OF THE CONTRACTOR.
- THE CONTRACTOR SHALL REMOVE ALL TRAFFIC CONTROL DEVICES BY THE END OF EACH WORK SHIFT.

CONSTRUCTION PROCEDURES

STAGE 1 (BEFORE PAVEMENT MILLING)

- REMOVE A MINIMUM OF 12 (300) OF THE PAVEMENT FROM AROUND THE STRUCTURE.
- REMOVE THE EXISTING FRAME AND LID FROM THE STRUCTURE.
- COVER THE STRUCTURE OPENING WITH A 36 (900) DIAMETER METAL PLATE.
- BACKFILL WITH CRUSHED STONE AND HMA SURFACE MIX APPROVED BY THE ENGINEER. (MIN. 3 (80) HMA TO REMAIN AFTER MILLING).

STAGE 2 (AFTER PAVEMENT MILLING)

- REMOVE THE HMA SURFACE MIX AND CRUSHED STONE.
- INSTALL THE FRAME AND LID; ADJUST THE FRAME TO ITS FINAL SURFACE ELEVATION.
- THE SURROUNDING SPACE SHALL BE FILLED WITH CLASS PP-2* CONCRETE TO THE ELEVATION OF THE SURFACE OF THE EXISTING BASE COURSE OR THE BINDER COURSE.

*UNLESS OTHERWISE SPECIFIED IN THE PLANS.

THE PROCEDURE EXPLAINED ABOVE SHALL CONFORM TO THE APPLICABLE PORTIONS OF SECTIONS 353, 406, 602, AND 603 OF THE STANDARD SPECIFICATIONS EXCEPT THAT "THE CONTRACTOR SHALL ADJUST THE STRUCTURES TO THE FINISHED PAVEMENT ELEVATION NO MORE THAN 5 CALENDAR DAYS PRIOR TO PLACEMENT OF THE FINAL LIFT OF SURFACE UNLESS APPROVED BY THE ENGINEER."

LEGEND

- | | |
|--|-------------------------------|
| ① SUB-BASE GRANULAR MATERIAL | ⑥ FRAME AND LID (SEE NOTES) |
| ② EXISTING PAVEMENT | ⑦ CLASS PP-2* CONCRETE |
| ③ 36 (900) DIAMETER METAL PLATE | ⑧ PROPOSED HMA SURFACE COURSE |
| ④ PROPOSED CRUSHED STONE AND HMA SURFACE MIX | ⑨ PROPOSED HMA BINDER COURSE |
| ⑤ EXISTING STRUCTURE | |

LOCATION OF STRUCTURES

THE CONTRACTOR WILL BE REQUIRED TO KEEP A RECORD OF THE LOCATIONS OF THE BURIED STRUCTURES ACCORDING TO THE STATION AND DISTANCE LEFT OR RIGHT OF THE CENTERLINE OF PAVEMENT. UPON COMPLETION OF THE WORK, THE CONTRACTOR WILL DELIVER THE RECORD TO THE ENGINEER.

BASIS OF PAYMENT

- REMOVING FRAMES AND LIDS ON DRAINAGE AND UTILITY STRUCTURES IN THE PAVEMENT PRIOR TO MILLING, AND ADJUSTING TO FINAL GRADE PRIOR TO PLACING THE SURFACE COURSE, WILL BE PAID FOR AT THE CONTRACT UNIT PRICE EACH FOR "FRAMES AND LIDS TO BE ADJUSTED (SPECIAL)."
- THIS WORK WILL NOT BE PAID FOR WHEN DRAINAGE AND UTILITY STRUCTURES ARE SPECIFIED FOR PAYMENT AS STRUCTURE RECONSTRUCTION.
- NEW FRAMES AND LIDS, WHEN SPECIFIED, WILL BE PAID FOR SEPARATELY.
- WHEN STRUCTURES ARE TO BE ADJUSTED OR RECONSTRUCTED, THE LOWERING AND RAISING OF THE FRAMES AND LIDS WILL NOT BE PAID FOR SEPARATELY BUT WILL BE INCLUDED IN THE COST OF THE CORRESPONDING PAY ITEM.

ALL DIMENSIONS ARE IN INCHES (MILLIMETERS) UNLESS OTHERWISE SHOWN

	USER NAME = Lawrence,DeManche	DESIGNED - R. SHAH	REVISED - R. BORO 03-09-11	STATE OF ILLINOIS DEPARTMENT OF TRANSPORTATION	DETAILS FOR FRAMES AND LIDS ADJUSTMENT WITH MILLING	F.A. RTE.	SECTION	COUNTY	TOTAL SHEETS	SHEET NO.
	DRAWN -	DRAWN -	REVISED - R. BORO 12-06-11							
	PLOT SCALE = 100.0000 ' / In.	CHECKED -	REVISED - K. SMITH 11-18-22			BD600-03 (BD-08)				
	PLOT DATE = 9/15/2023	DATE - 10-25-94	REVISED - K. SMITH 09-15-23			CONTRACT NO.				
SCALE: NONE						ILLINOIS FED. AID PROJECT				
SHEET 1 OF 1 SHEETS						TO STA.				

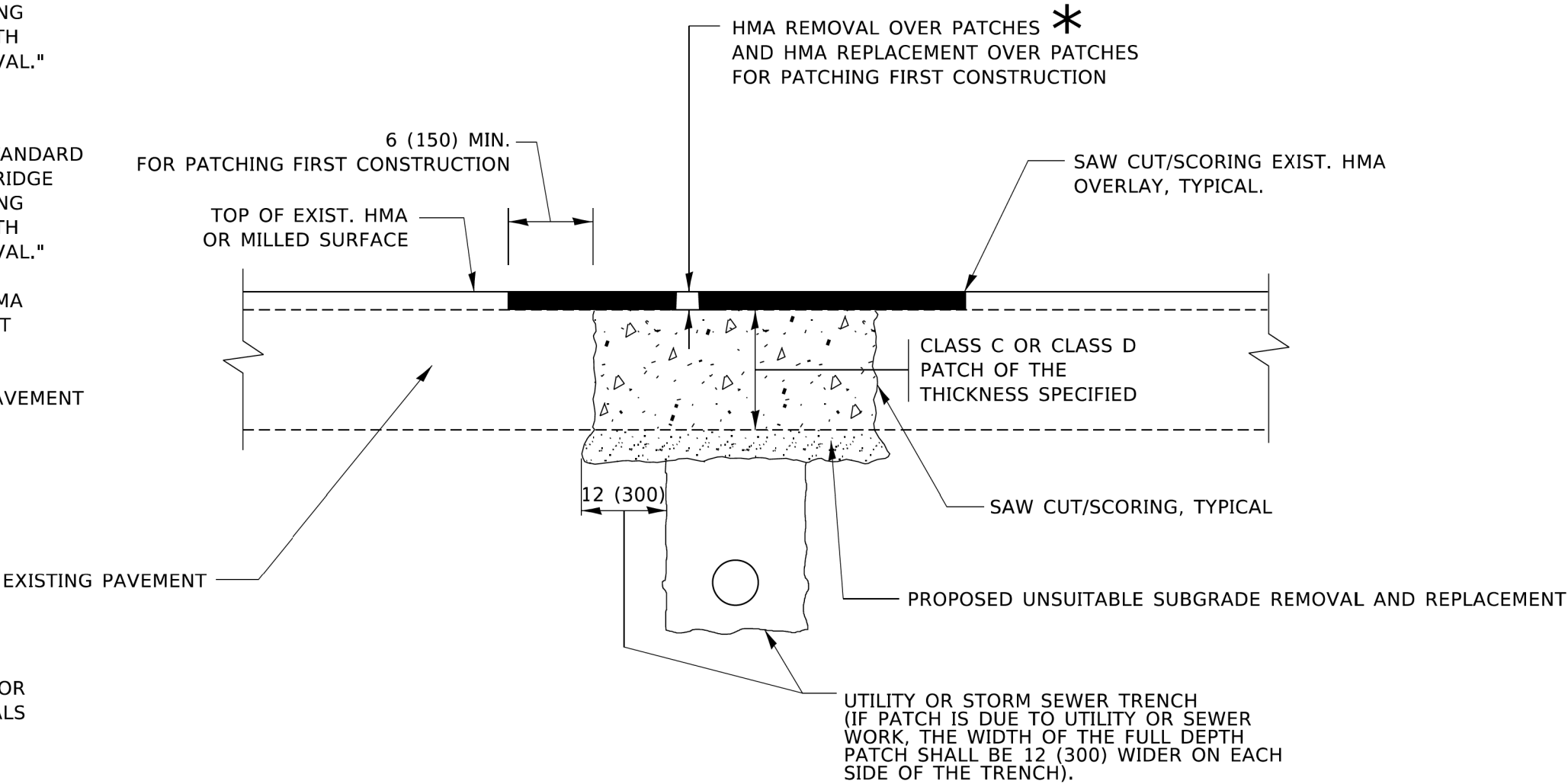
CGroup Chicago, IL 60631 ciorba.com	USER NAME = aharn	DESIGNED - AMH	REVISED -	STATE OF ILLINOIS DEPARTMENT OF TRANSPORTATION	CENTRAL AVENUE LOCAL AGENCY FUNCTIONAL OVERLAY DISTRICT ONE DETAILS - BD-08	F.A.U. RTE.	SECTION	COUNTY	TOTAL SHEETS	SHEET NO.
	DRAWN - AMH	DRAWN -	REVISED -							
	PLOT SCALE = 1" = 20'	CHECKED - EPS	REVISED -			2794	24-00113-00-RS	COOK	32	22
	PLOT DATE = 11/4/2024	DATE - 3/26/2025	REVISED -			CONTRACT NO. 61L64				
SCALE: NTS						ILLINOIS FED. AID PROJECT				
SHEET OF SHEETS						TO STA.				

METHOD OF MEASUREMENT

REFER TO SECTION 442 OF THE STANDARD SPECIFICATIONS FOR ROAD AND BRIDGE CONSTRUCTION AND THE RECURRING SPECIAL PROVISION "PATCHING WITH HOT-MIX ASPHALT OVERLAY REMOVAL."

BASIS OF PAYMENT

- 1. REFER TO SECTION 442 OF THE STANDARD SPECIFICATIONS FOR ROAD AND BRIDGE CONSTRUCTION AND THE RECURRING SPECIAL PROVISION "PATCHING WITH HOT-MIX ASPHALT OVERLAY REMOVAL."
- 2. SAW CUT/SCORING OF EXISTING HMA OVERLAY IS INCLUDED IN THE COST OF PAVEMENT PATCHING.
- 3. SAW CUT/SCORING OF EXISTING PAVEMENT IS INCLUDED IN THE COST OF PAVEMENT PATCHING.



* SEE TYPICAL SECTIONS FOR THICKNESS AND MATERIALS

SEQUENCE OF CONSTRUCTION (PATCHING FIRST)

- 1. REMOVE THE EXISTING HMA MATERIAL OVER THE AREA TO BE PATCHED.
- 2. REMOVE AND REPLACE WITH CLASS C OR D PATCH.
- 3. REPLACE HMA MATERIAL OVER THE AREA TO BE PATCHED.

SEQUENCE OF CONSTRUCTION (MILLING FIRST)

- 1. MILL HMA FIRST IF THERE IS AT LEAST 4½ INCHES OR MORE OF HMA MATERIAL ON TOP OF THE EXISTING PAVEMENT OR IF THE PAVEMENT IS FULL DEPTH HMA. A MINIMUM OF 2 INCHES OF HMA MATERIAL SHALL BE IN PLACE AFTER MILLING.
- 2. REMOVE AND REPLACE WITH FULL DEPTH CLASS D PATCHES TO TOP OF MILLED SURFACE.

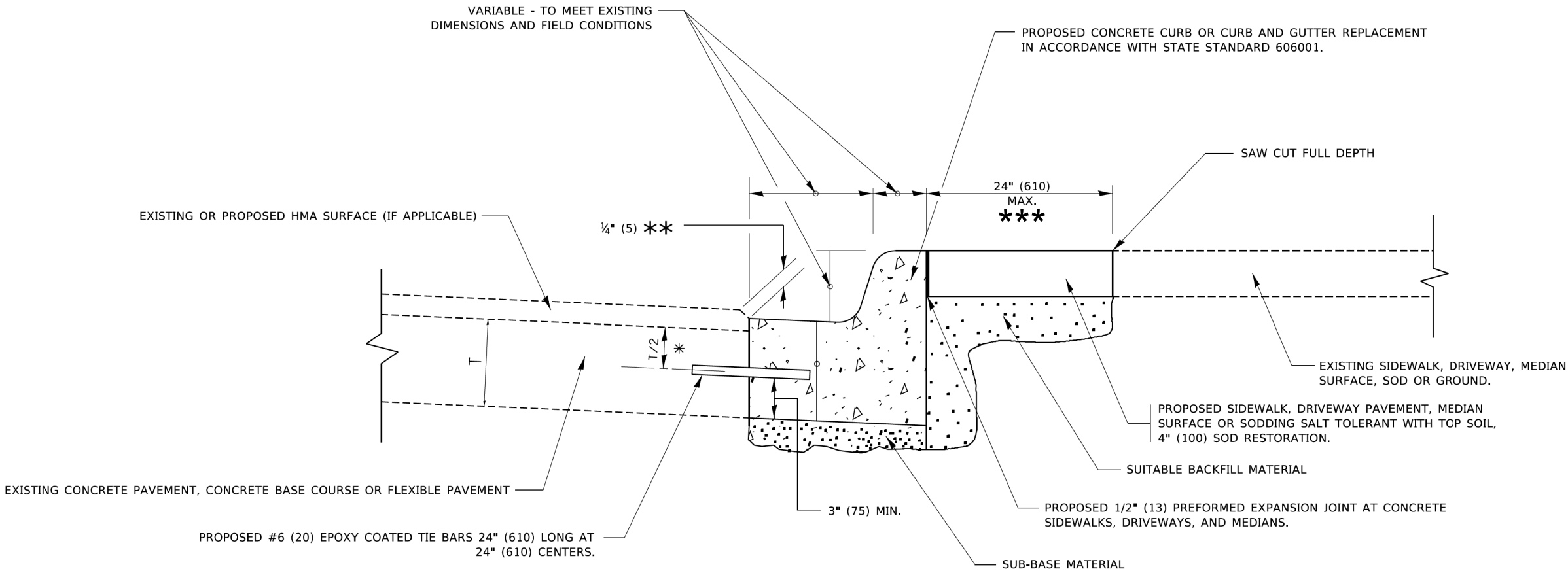
ALL DIMENSIONS ARE IN INCHES (MILLIMETERS) UNLESS OTHERWISE SHOWN.

				USER NAME = Lawrence,DeManche	DESIGNED - R. SHAH	REVISED - R. BORO 01-01-07	STATE OF ILLINOIS DEPARTMENT OF TRANSPORTATION				PAVEMENT PATCHING FOR HMA SURFACED PAVEMENT				F.A. RTE.	SECTION		COUNTY	TOTAL SHEETS	SHEET NO.	
				DRAWN -	REVISED - R. BORO 09-04-07	SCALE: NONE									SHEET 1	OF 1	SHEETS	STA.	TO STA.		BD400-04 (BD-22)
				PLOT SCALE = 100.0000 ' / in.	CHECKED -	REVISED - K. ENG 10-27-08											ILLINOIS		FED. AID PROJECT		
				PLOT DATE = 11/18/2022	DATE - 10-25-94	REVISED - K. SMITH 11-18-22															

<div>Group</div> <div>Chicago, IL 60631</div> <div>ciorba.com</div>	USER NAME = aham	DESIGNED - AMH	REVISED -	STATE OF ILLINOIS DEPARTMENT OF TRANSPORTATION				CENTRAL AVENUE LOCAL AGENCY FUNCTIONAL OVERLAY DISTRICT ONE DETAILS - BD-22				F.A.U. RTE.	SECTION		COUNTY	TOTAL SHEETS	SHEET NO.
	DRAWN - AMH	REVISED -	SCALE: NTS									SHEET	OF	SHEETS	STA.	TO STA.	
	PLOT SCALE = 1" = 20'	CHECKED - EPS	REVISED -														
	PLOT DATE = 11/4/2024	DATE - 3/26/2025	REVISED -														

DATE PLOTTED = 3/26/2025 12:38:09 PM
PEN TABLE = prof#_tbl
PLOT CONFIG = DOT_PDF_Nlayers_BW.plt
FILE NAME = C:\Users\aham\OneDrive\Documents\Projects\Illinois\Projects\BD24\BD24.dgn
FILE NAME = C:\Users\aham\OneDrive\Documents\Projects\Illinois\Projects\BD24\BD24.dgn

MODEL: Default
FILE NAME: p:\projects\bd24\bd24.dgn
PROJECT: BD24



- * 3" (75) MINIMUM FROM TOP AND BOTTOM OF THE CONCRETE PAVEMENT OR BASE COURSE.
- ** IF THE FINAL SURFACE OF THE PAVEMENT IS CONCRETE, THE GUTTER IS TO BE FLUSH WITH THE PAVEMENT.
- *** DRIVEWAY PAVEMENT RESTORATION WILL BE A MAXIMUM WIDTH OF 36"

CURB OR CURB AND GUTTER REMOVAL AND REPLACEMENT

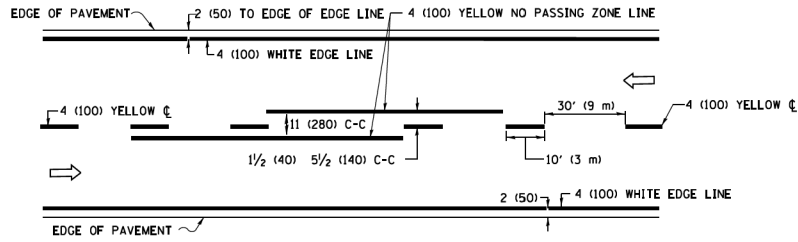
ALL DIMENSIONS ARE IN INCHES (MILLIMETERS) UNLESS OTHERWISE SHOWN.

				USER NAME = [footen]				DESIGNED - A. HOUSEH				REVISED - A. ABBAS 03-21-97				STATE OF ILLINOIS DEPARTMENT OF TRANSPORTATION										CURB OR CURB AND GUTTER REMOVAL AND REPLACEMENT										F.A. RTE.		SECTION				COUNTY		TOTAL SHEETS		SHEET NO.																	
				DRAWN -				REVISED - M. GOMEZ 01-22-01																																																							
				PLOT SCALE = 50.0000 ' / in.				CHECKED -				REVISED - R. BORO 12-15-09																																																			
				PLOT DATE = 7/11/2019				DATE - 03-11-94				REVISED - K. SMITH 07-11-19																																																			
																										SCALE: NONE				SHEET 1 OF 1 SHEETS				STA. TO STA.				BD600-06 (BD-24)										CONTRACT NO.															
																																						ILLINOIS				FED. AID PROJECT																					

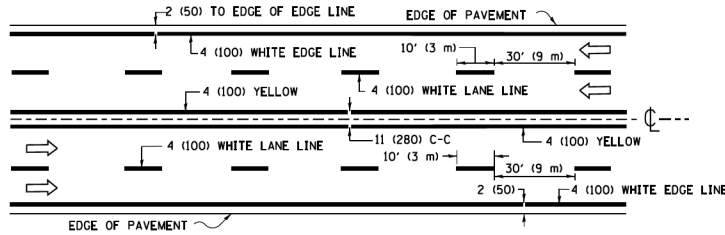
<div>Group</div> <div>Chicago, IL 60631</div> <div>ciorba.com</div>	USER NAME = aharn				DESIGNED - AMH				REVISED -				STATE OF ILLINOIS DEPARTMENT OF TRANSPORTATION										CENTRAL AVENUE LOCAL AGENCY FUNCTIONAL OVERLAY DISTRICT ONE DETAILS - BD-24										F.A.U. RTE.		SECTION				COUNTY		TOTAL SHEETS		SHEET NO.										
					DRAWN - AMH				REVISED -																																												
	PLOT SCALE = 1" = 20'				CHECKED - EPS				REVISED -																																												
	PLOT DATE = 11/4/2024				DATE - 3/26/2025				REVISED -																																												
																										SCALE: NTS				SHEET OF SHEETS				STA. TO STA.				CONTRACT NO. 61L64															
																																						ILLINOIS				FED. AID PROJECT											

DATE PLOTTED = 3/26/2025 12:38:41 PM
PEN TABLE = prof.tbl
PLOT CONFIG = DOT_PDF_Nelayera_BW.plt
FILE NAME = C:\Users\jacob\OneDrive\Documents\Projects\Illinois\Projects\Local Agency Functional Overlay\District One\Details\TC-13.dgn
FILE NAME = C:\Users\jacob\OneDrive\Documents\Projects\Illinois\Projects\Local Agency Functional Overlay\District One\Details\TC-13.dgn

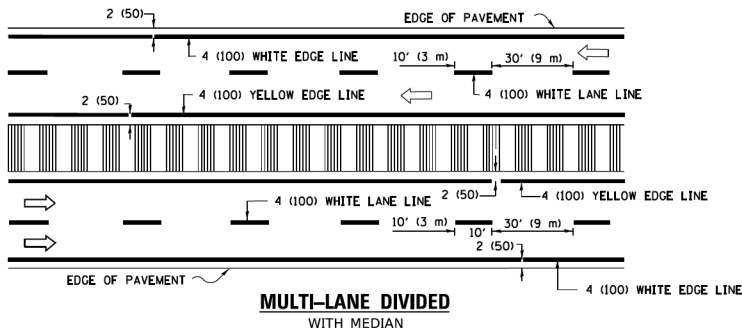
MODEL: Default
FILE NAME: p:\1\0404\BID\INTG\Illinois\p\1\0404\BID\INTG\Office\District One\Details\TC-13.dgn



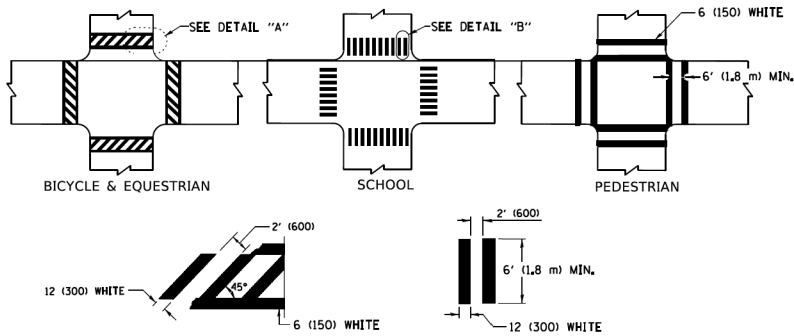
2-LANE ROADWAY



MULTI-LANE UNDIVIDED



TYPICAL LANE AND EDGE LINE MARKING

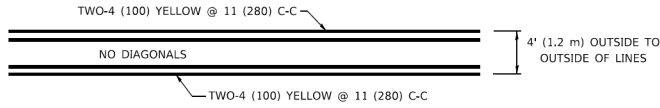


DETAIL "A"

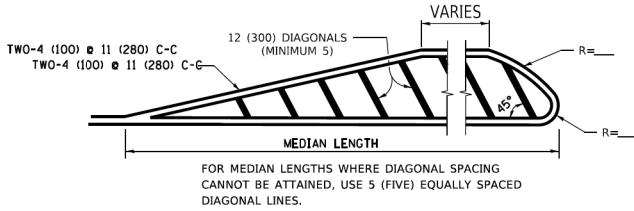
DETAIL "B"

TYPICAL CROSSWALK MARKING

* MARKINGS SHALL BE INSTALLED PARALLEL TO THE CENTERLINE OF THE ROAD WHICH IT CROSSES

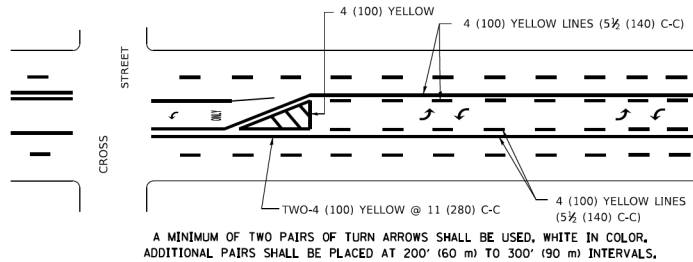


4' (1.2 m) WIDE MEDIANS ONLY



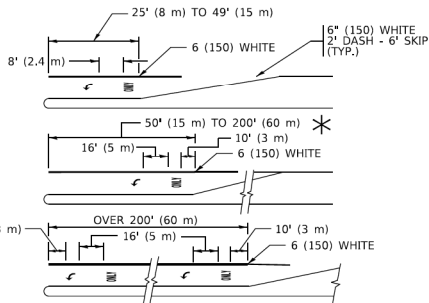
DIAGONAL LINE SPACING: 50' (15 m) C-C (LESS THAN 30MPH (50 km/h))
75' (25 m) C-C 30MPH (50 km/h) TO 45MPH (70 km/h))
150' (45 m) C-C (MORE THAN 45MPH (70 km/h))

MEDIANS OVER 4' (1.2 m) WIDE



MEDIAN WITH TWO-WAY LEFT TURN LANE

TYPICAL PAINTED MEDIAN MARKING

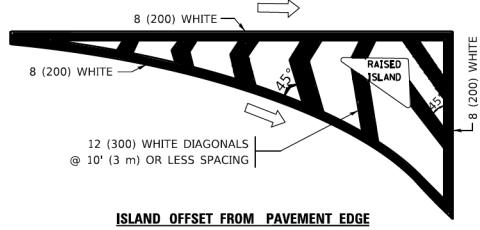


FULL SIZE LETTERS 8' (2.4 m) AND ARROWS SHALL BE USED.
AREA = 15.6 SQ. FT. (1.5 m²) ONLY AREA = 20.8 SQ. FT. (1.9 m²)

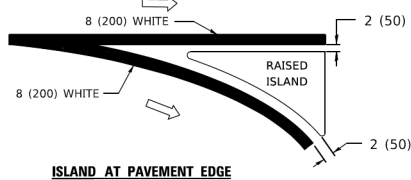
* TURN LANES IN EXCESS OF 400' (120 m) IN LENGTH MAY HAVE AN ADDITIONAL SET OF ARROW - *ONLY* INSTALLED MIDWAY BETWEEN THE OTHER TWO SETS OF ARROW - *ONLY*.

TYPICAL LEFT (OR RIGHT) TURN LANE

TYPICAL TURN LANE MARKING

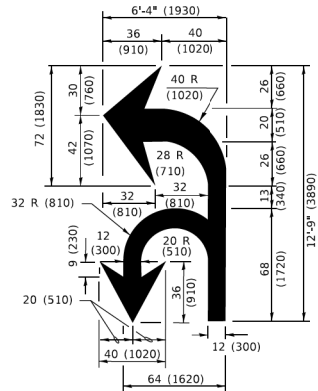


ISLAND OFFSET FROM PAVEMENT EDGE

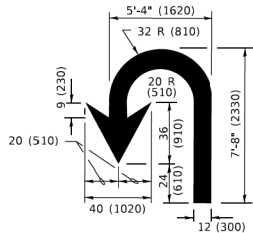


ISLAND AT PAVEMENT EDGE

TYPICAL ISLAND MARKING



COMBINATION LEFT AND U-TURN



U-TURN

LANE REDUCTION TRANSITION

* LANE REDUCTION ARROWS REQUIRED AT SPEEDS OF 45 MPH OR GREATER OR WHEN SPECIFIED IN PLANS.

TYPE OF MARKING	WIDTH OF LINE	PATTERN	COLOR	SPACING / REMARKS
CENTERLINE ON 2 LANE PAVEMENT	4 (100)	SKIP-DASH	YELLOW	10' (3 m) LINE WITH 30' (9 m) SPACE
CENTERLINE ON MULTI-LANE UNDIVIDED PAVEMENT	2 @ 4 (100)	SOLID	YELLOW	11 (280) C-C
NO PASSING ZONE LINES: FOR ONE DIRECTION FOR BOTH DIRECTIONS	4 (100) 2 @ 4 (100)	SOLID SOLID	YELLOW YELLOW	5 1/2 (140) C-C FROM SKIP-DASH CENTERLINE 11 (280) C-C OMIT SKIP-DASH CENTERLINE BETWEEN
LANE LINES	4 (100) 5 (125) ON FREEWAYS	SKIP-DASH SKIP-DASH	WHITE WHITE	10' (3 m) LINE WITH 30' (9 m) SPACE
DOTTED LINES (EXTENSIONS OF CENTER, LANE OR TURN LANE MARKINGS)	SAME AS LINE BEING EXTENDED	SKIP-DASH	SAME AS LINE BEING EXTENDED	2' (600) LINE WITH 6' (1.8 m) SPACE
EDGE LINES	4 (100)	SOLID	YELLOW-LEFT WHITE-RIGHT	OUTLINE MEDIANS IN YELLOW
TURN LANE MARKINGS	6 (150) LINE; FULL SIZE LETTERS & SYMBOLS (8' (2.4m))	SOLID	WHITE	SEE TYPICAL TURN LANE MARKING DETAIL
TWO WAY LEFT TURN MARKING	2 @ 4 (100) EACH DIRECTION 8' (2.4m) LEFT ARROW	SKIP-DASH AND SOLID IN PAIRS	YELLOW WHITE	10' (3 m) LINE WITH 30' (9 m) SPACE FOR SKIP-DASH; 5 1/2 (140) C-C BETWEEN SOLID LINE AND SKIP-DASH LINE SEE TYPICAL TWO-WAY LEFT TURN MARKING DETAIL
CROSSWALK LINES (PEDESTRIAN) A. DIAGONALS (BIKE & EQUESTRIAN) B. LONGITUDINAL BARS (SCHOOL)	2 @ 6 (150) 12 (300) @ 45° 12 (300) @ 90°	SOLID SOLID SOLID	WHITE WHITE WHITE	NOT LESS THAN 6' (1.8 m) APART 2' (600) APART 2' (600) APART SEE TYPICAL CROSSWALK MARKING DETAILS.
STOP LINES	24 (600)	SOLID	WHITE	PLACE 4' (1.2 m) IN ADVANCE OF AND PARALLEL TO CROSSWALK, IF PRESENT. OTHERWISE, PLACE AT DESIRED STOPPING POINT. PARALLEL TO CROSSROAD CENTERLINE, WHERE POSSIBLE
PAINTED MEDIANS	2 @ 4 (100) WITH 12 (300) DIAGONALS @ 45° NO DIAGONALS USED FOR 4' (1.2 m) WIDE MEDIANS	SOLID	YELLOW: TWO WAY TRAFFIC WHITE: ONE WAY TRAFFIC	11 (280) C-C FOR THE DOUBLE LINE SEE TYPICAL PAINTED MEDIAN MARKING.
GORE MARKING AND CHANNELIZING LINES	8 (200) WITH 12 (300) DIAGONALS @ 45°	SOLID	WHITE	DIAGONALS: 15' (4.5 m) C-C (LESS THAN 30MPH (50 km/h)) 20' (6 m) C-C 30MPH (50 km/h) TO 45MPH (70 km/h)) 30' (9 m) C-C (OVER 45MPH (70 km/h))
RAILROAD CROSSING	24 (600) TRANSVERSE LINES: *RR* IS 6' (1.8 m) LETTERS: 16 (400) LINE FOR **	SOLID	WHITE	SEE STATE STANDARD 780001 AREA OF: *R*=3.6 SQ. FT. (0.33 m ²) EACH *X*=54.0 SQ. FT. (5.0 m ²)
SHOULDER DIAGONALS (REQUIRED FOR SHOULDERS ≥ 8')	12 (300) @ 45°	SOLID	WHITE - RIGHT YELLOW - LEFT	50' (15 m) C-C (LESS THAN 30MPH (50 km/h)) 75' (25 m) C-C (30 MPH (50 km/h) TO 45MPH (70 km/h)) 150' (45 m) C-C (OVER 45MPH (70 km/h))
U TURN ARROW	SEE DETAIL	SOLID	WHITE	16.3 SF
2 ARROW COMBINATION LEFT AND U TURN	SEE DETAIL	SOLID	WHITE	30.4 SF

FOR FURTHER DETAILS ON PAVEMENT MARKING REFER TO STANDARD SPECIFICATIONS FOR ROAD AND BRIDGE CONSTRUCTION AND STATE STANDARD 780001.

All dimensions are in inches (millimeters) unless otherwise shown.

USER NAME = footem	DESIGNED - EVERS	REVISED - C. JUCIUS 09-09-09
DRAWN -	REVISOR - C. JUCIUS 07-01-13	
PLOT SCALE = 50.0000' / in.	CHECKED -	REVISED - C. JUCIUS 12-21-15
PLOT DATE = 3/4/2019	DATE - 03-19-90	REVISED - C. JUCIUS 04-12-16

STATE OF ILLINOIS
DEPARTMENT OF TRANSPORTATION

DISTRICT ONE
TYPICAL PAVEMENT MARKINGS

SCALE: NONE SHEET 1 OF 2 SHEETS STA. TO STA.

F.A. RTE.	SECTION	COUNTY	TOTAL SHEETS	SHEET NO.
	TC-13			

CiorbaGroup
8725 W. Higgins Rd, Ste 600, Chicago, IL 60631
P 773.775.4009 | www.ciorba.com

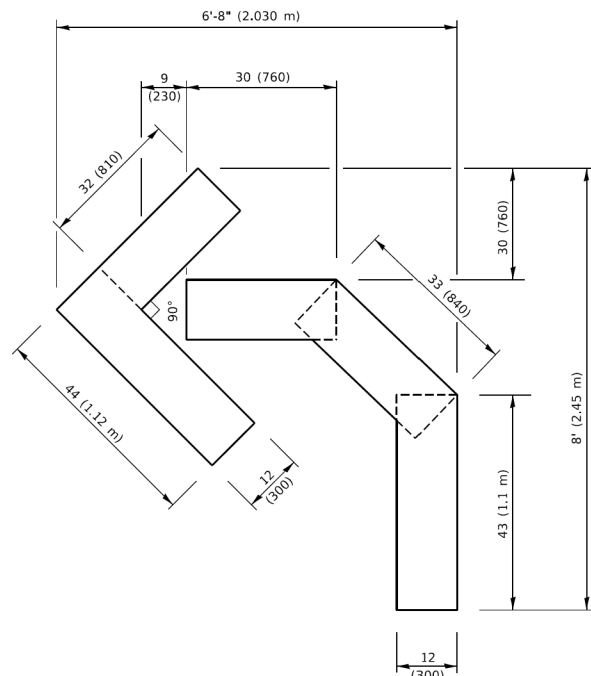
USER NAME = aham	DESIGNED - AMH	REVISED -
DRAWN - AMH	REVISOR -	
PLOT SCALE = 1" = 20'	CHECKED - EPS	REVISED -
PLOT DATE = 11/4/2024	DATE - 3/26/2025	REVISED -

STATE OF ILLINOIS
DEPARTMENT OF TRANSPORTATION

CENTRAL AVENUE LOCAL AGENCY FUNCTIONAL OVERLAY
DISTRICT ONE DETAILS - TC-13

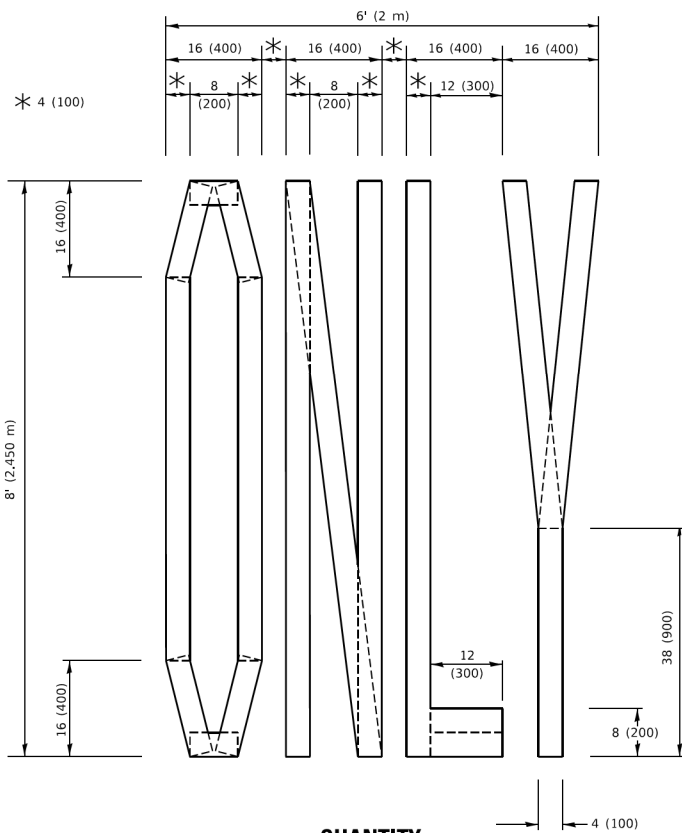
SCALE: NTS SHEET OF SHEETS STA. TO STA.

F.A.U. RTE.	SECTION	COUNTY	TOTAL SHEETS	SHEET NO.
2794	24-00113-00-RS	COOK	32	28

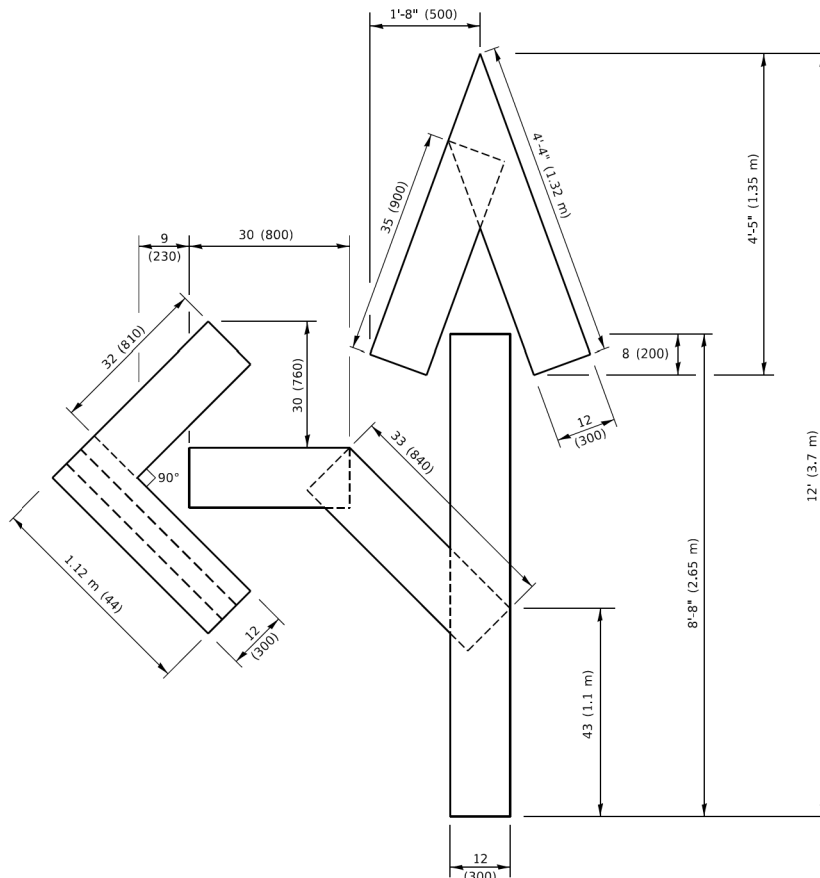


QUANTITY

4 (100) LINE = 45.5 ft. (13.9 m)
15.2 sq. ft. (1.41 sq. m)

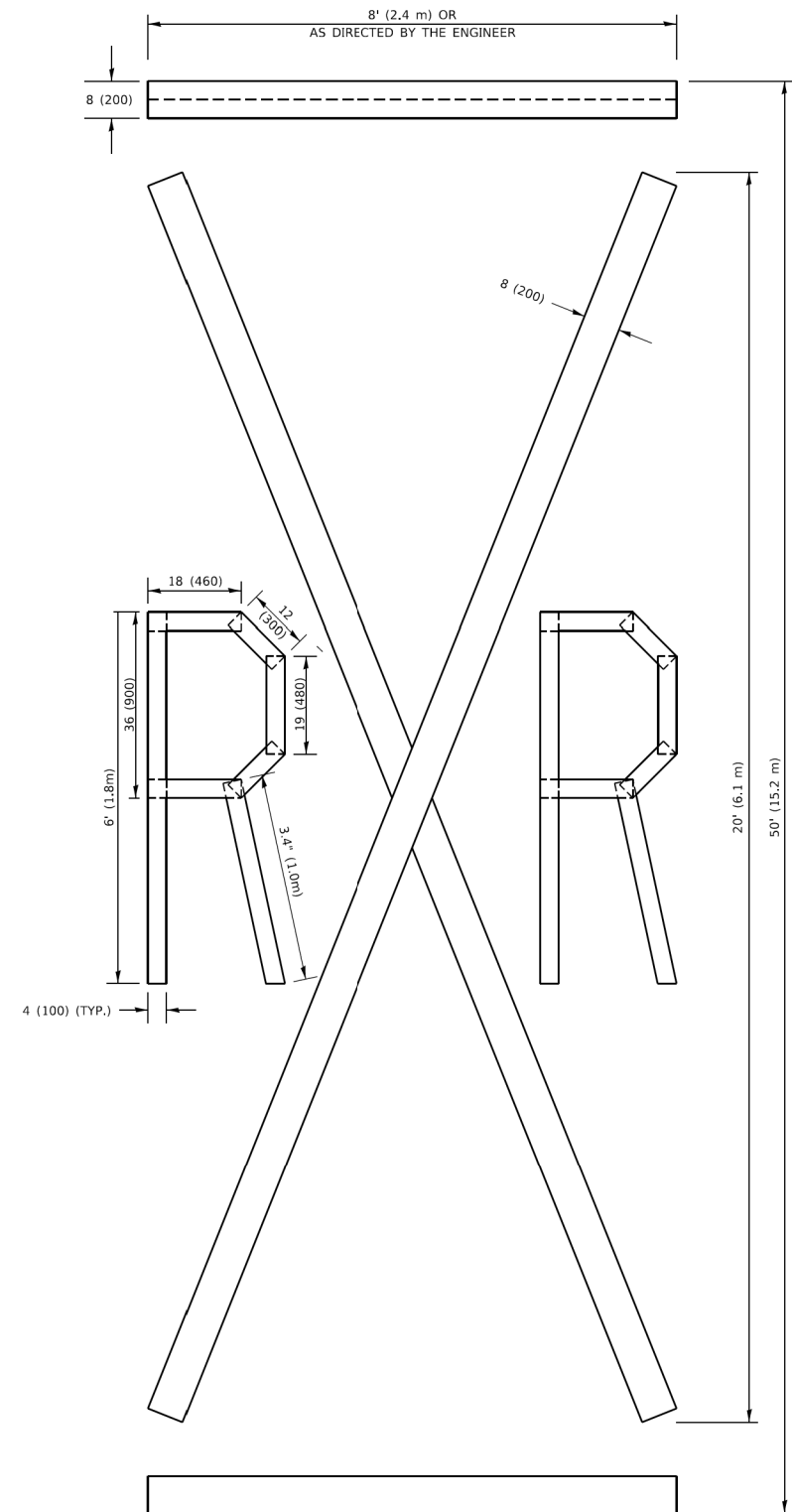


QUANTITY



QUANTITY

NOTE:



QUANTITY

All dimensions are in inches (millimeters) unless otherwise shown.

USER NAME = footemj	DESIGNED -	REVISED - T. RAMMACHER 03-02-98
	DRAWN -	REVISED - E. GOMEZ 08-28-00
PLOT SCALE = 50.0068' / in.	CHECKED -	REVISED - E. GOMEZ 08-28-00
PLOT DATE = 3/4/2019	DATE - 09-18-94	REVISED - A. SCHUETZE 09-15-16

**STATE OF ILLINOIS
DEPARTMENT OF TRANSPORTATION**

SHORT TERM PAVEMENT MARKING LETTERS AND SYMBOLS

SCALE: NONE	SHEET 1 OF 1 SHEETS	STA. TO STA.
-------------	---------------------	--------------

F.A. RTE.	SECTION	COUNTY	TOTAL SHEETS	SHEET NO.
TC-16		CONTRACT NO.		
	ILLINOIS	FED. AID PROJECT		

 **CiorbaGroup**
8725 W. Higgins Rd, Ste 600, Chicago, IL 60631
P 773.775.4009 | www.ciorba.com

USER NAME = aharn	DESIGNED - AMH
	DRAWN - AMH
PLOT SCALE = 1" = 20'	CHECKED - EPS
PLOT DATE = 11/4/2024	DATE - 3/26/2025

REVISED	-
REVISED	-
REVISED	-
REVISED	-

**STATE OF ILLINOIS
DEPARTMENT OF TRANSPORTATION**

**CENTRAL AVENUE LOCAL AGENCY FUNCTIONAL OVERLAY
DISTRICT ONE DETAILS - TC-16**

SCALE: NTS	SHEET	OF	SHEETS	STA.	TO STA.
------------	-------	----	--------	------	---------

F.A.U. RTE.	SECTION	COUNTY	TOTAL SHEETS	SHEET NO.
2794	24-00113-00-RS	COOK	32	29
		CONTRACT NO. 61L64		
ILLINOIS		FED. AID PROJECT		

	USER NAME = foatormj	DESIGNED -	REVISED - R. MIRIS 09-15-97
		DRAWN -	REVISED - R. MIRIS 12-11-97
	PLOT SCALE = 50.0000 " / In.	CHECKED -	REVISED -T. RAMMACHER 02-02-97
	PLOT DATE = 3/4/2019	DATE -	REVISED - C. JUCIUS 01-31-07

USER NAME = aharn	DESIGNED - AMH	REVISED -
	DRAWN - AMH	REVISED -
PLOT SCALE = 1" = 20'	CHECKED - EPS	REVISED -
PLOT DATE = 11/4/2024	DATE - 3/26/2025	REVISED -

**STATE OF ILLINOIS
DEPARTMENT OF TRANSPORTATION**

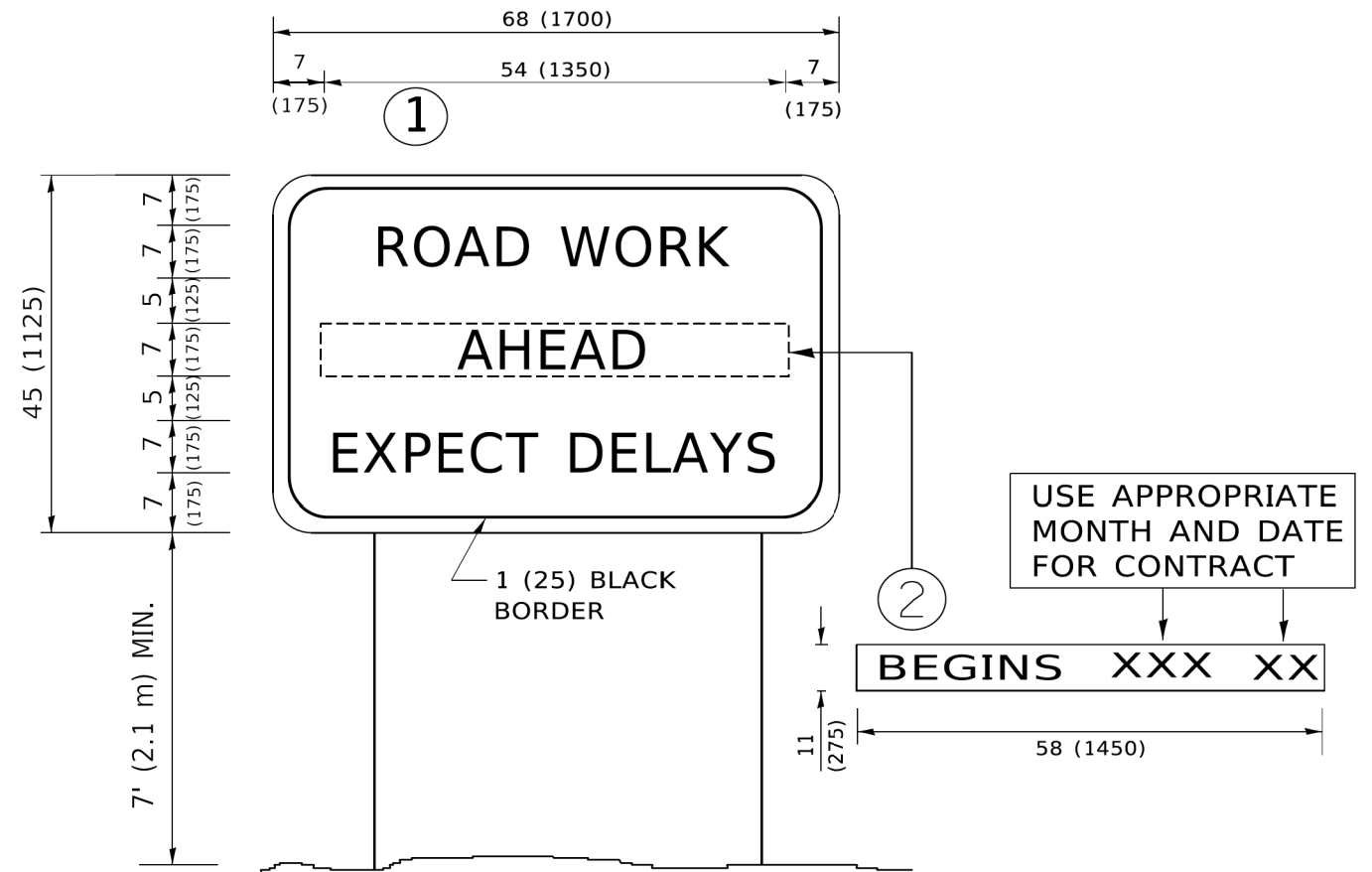
STATE OF ILLINOIS
DEPARTMENT OF TRANSPORTATION

ARTERIAL ROAD INFORMATION SIGN

**CENTRAL AVENUE LOCAL AGENCY FUNCTIONAL OVERLAY
DISTRICT ONE DETAILS - TC-22**

F.A. RTE.	SECTION	COUNTY	TOTAL SHEETS	SHEET NO.
TC-22		CONTRACT NO.		
	ILLINOIS	FED. AID PROJECT		

F.A.U. RTE.	SECTION	COUNTY	TOTAL SHEETS	SHEET NO.
2794	24-00113-00-RS	COOK	32	30
		CONTRACT NO. 61L64		
	ILLINOIS	FED. AID PROJECT		



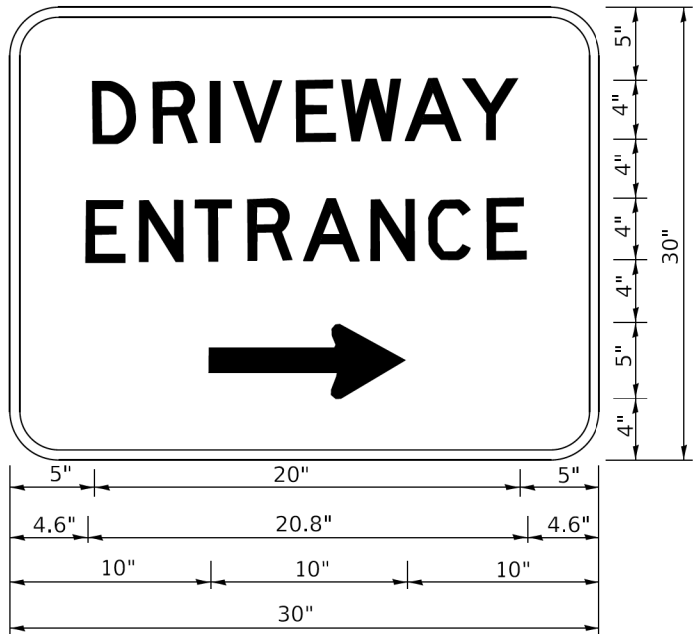
NOTES:

1. USE BLACK LETTERING ON ORANGE BACKGROUND.
2. ERECT SIGNS IN ADVANCE OF THE LOCATION FOR THE "ROAD CONSTRUCTION AHEAD" SIGN AT LOCATIONS AS DIRECTED BY THE ENGINEER.
3. ERECT SIGN①WITH INSTALLED PANEL②ONE WEEK PRIOR TO THE START OF CONSTRUCTION.
4. REMOVE PANEL②SOON AFTER THE START OF CONSTRUCTION.
5. SEE SPECIAL PROVISION FOR "TEMPORARY INFORMATION SIGNING" FOR ADDITIONAL INFORMATION.
6. ONE SIGN ASSEMBLY EQUALS 25.70 SQ. FT. (2.3 SQ. M.)
7. SHALL BE PAID FOR AS TEMPORARY INFORMATION SIGNING.

ALL DIMENSIONS ARE IN INCHES (MILLIMETERS)
UNLESS OTHERWISE SHOWN.

DATE PLOTTED = 3/26/2025 12:39:05 PM
PEN TABLE = prof#.tbl
PLOT CONFIG = IDOT_PDF_Netlayer_BW.ctb
PROJECT SHEET NAMES
FILE NAME = p:\cadd\pawbentley\coms\corba-ew-01\Documents\projects\ill_Munkba\lites\Morton Grove\0021456.21\CADD_Data\Sheet\0021456.21-dht-D1-TC16.dgn

MODEL: Default
FILE NAME: p:\cadd\pawbentley\coms\corba-ew-01\Documents\projects\ill_Munkba\lites\Morton Grove\0021456.21\CADD_Data\Sheet\0021456.21-dht-D1-TC16.dgn



3.0" RADIUS, 0.5" BORDER, WHITE ON GREEN; REFLECTORIZED
"DRIVEWAY" D; "ENTRANCE" D; STANDARD ARROW CUSTOM 12.0" x 5.0"

NOTES:

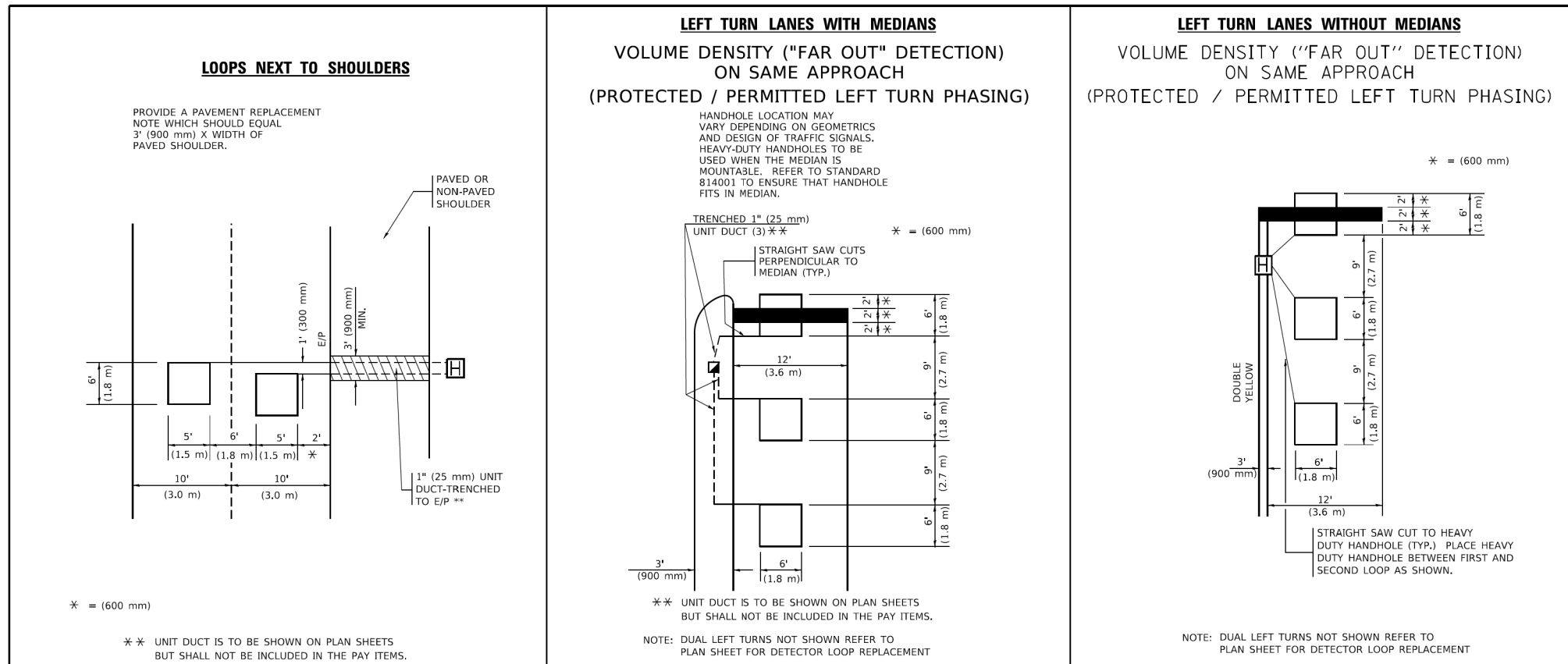
1. HALF OF THE SIGNS WILL REQUIRE A LEFT HAND FACING ARROW.
2. TWO SIGNS SHALL BE USED AT EACH COMMERCIAL ENTRANCE
PLACED BACK-TO-BACK: ONE WITH A RIGHT HAND ARROW (SHOWN)
SHALL BE PLACED ON THE NEAR RIGHT SIDE THE DRIVEWAY
AND ONE WITH A LEFT HAND ARROW SHALL BE PLACED ON THE
FAR LEFT SIDE OF THE DRIVEWAY.
3. SIGNS TO BE PAID FOR AS ITEM "TEMPORARY INFORMATION SIGNING".

				STATE OF ILLINOIS DEPARTMENT OF TRANSPORTATION				DRIVEWAY ENTRANCE SIGNING				F.A.U. RTE.	SECTION	COUNTY	TOTAL SHEETS	SHEET NO.
												TC-26				CONTRACT NO.
												ILLINOIS				FED. AID PROJECT
								SCALE: NONE	SHEET 1	OF 1	SHEETS	STA.	TO STA.			
												F.A.U. RTE.	SECTION	COUNTY	TOTAL SHEETS	SHEET NO.
												2794	24-00113-00-RS	COOK	32	31
																CONTRACT NO. 61L64
												ILLINOIS				FED. AID PROJECT

				STATE OF ILLINOIS DEPARTMENT OF TRANSPORTATION				CENTRAL AVENUE LOCAL AGENCY FUNCTIONAL OVERLAY DISTRICT ONE DETAILS - TC-26				SCALE: NTS	SHEET	OF	SHEETS	STA.	TO STA.

				USER NAME = leysa	DESIGNED -	REVISED -	C. JUCIUS 02-15-07
					DRAWN -	REVISED -	
				PLOT SCALE = 50.0000' / in.	CHECKED -	REVISED -	
				PLOT DATE = 8/6/2021	DATE -	REVISED -	

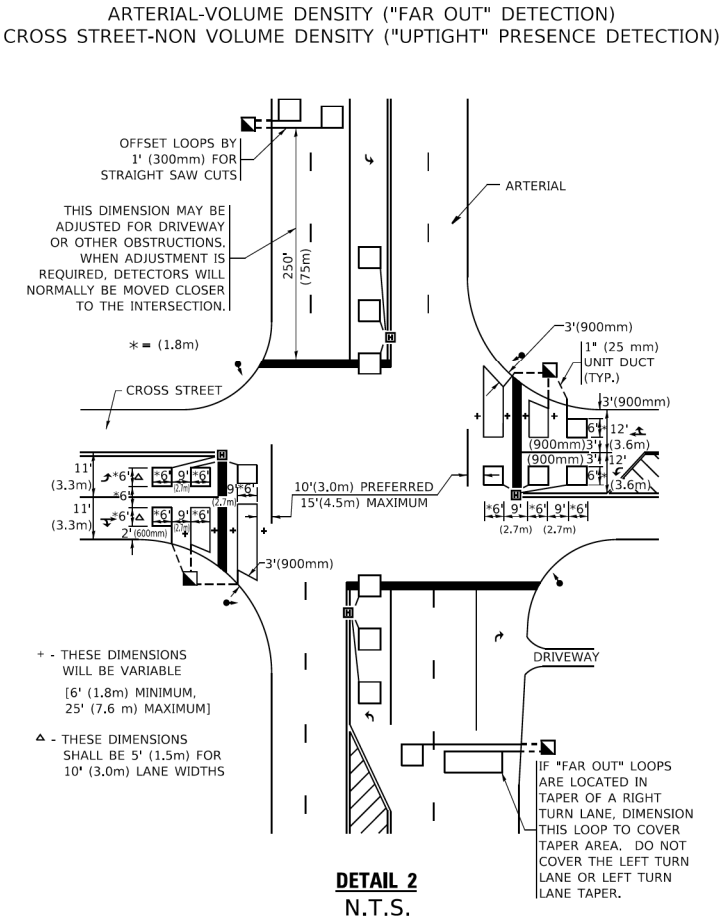
				USER NAME = aharn	DESIGNED -	REVISED -	
					DRAWN -	REVISED -	
				PLOT SCALE = 1" = 20'	CHECKED -	REVISED -	
				PLOT DATE = 11/4/2024	DATE -	REVISED -	



* WHEN SYSTEM LOOPS ARE REQUIRED ON AN APPROACH OF AN INTERSECTION, THE LOOPS USED FOR VOLUME DENSITY AND INTERSECTION TIMING SHALL ALSO BE USED AS SYSTEM DETECTORS. EACH ONE OF THESE TYPE OF LOOPS REQUIRES A SEPARATE TWO CONDUCTOR NO. 14 TWISTED SHIELDED CABLE AND A SEPARATE INDUCTIVE LOOP DETECTOR WHEN NEW CONTROLLERS ARE UTILIZED. THE DESIGNER SHALL LABEL THESE TYPES OF LOOPS AS "INTERSECTION AND SAMPLING (SYSTEM) DETECTORS" ON THE SIGNAL LAYOUT, THE INTERCONNECT PLAN AND THE SYSTEM CABLE PLAN. WHEN AN EXISTING CONTROLLER IS UTILIZED FOR THIS TYPE OF DETECTION, THE PAY ITEM "INDUCTIVE LOOP DETECTOR WITH SYSTEM OUTPUT" SHOULD BE USED.

"FAR OUT" DETECTION REFERS TO LOCKING, PRESENCE TYPE DETECTION LOCATED IN THRU LANES, RIGHT TURN LANES, AND RIGHT TURN LANE TAPER AREAS (IF APPLICABLE), USUALLY 250' (75 m) IN ADVANCE OF STOP BARS. "UPTIGHT" DETECTION REFERS TO NON-LOCKING PRESENCE TYPE DETECTION LOCATED IN ALL LANES AND 10'-15' (3.0 m-4.5 m) BEHIND THE CROSSING STREET'S EDGE OF PAVEMENT EXTENDED.

THIS DRAWING HAS BEEN PREPARED TO ASSIST THE RESIDENT ENGINEER FOR ALL ROADWAY RESURFACING OR S.M.A.R.T. PROJECTS WHERE THE DIMENSIONS ARE NOT SHOWN ON THE PLANS AND THE FINAL LOCATIONS FOR CROSSWALKS OR STOP BARS ARE NOT DETERMINED.



ARTERIAL VOLUME DENSITY ("FAR OUT" DETECTION)

CROSS STREET-NON VOLUME DENSITY ("FAR OUT" DETECTION)

* = (1.8m)
** = (1.5m)

ARTERIAL

CROSS STREET

DRIVEWAY

DO NOT INSTALL CALLING LOOP IN RIGHT TURN LANE.

10' (3.0m) OR CLOSER DEPENDING ON DRIVEWAY LOCATION, CALLING LOOPS

[TYP.-12' (3.6m) LANES]

STRAIGHT SAW CUTS TO HEAVY-DUTY HANDHOLE IN PAVEMENT (TYP.)

LOOPS ARE SAW-CUT TO THE EDGE OF PAVEMENT. 1" (25 mm) UNIT DUCT IS RUN BETWEEN EDGE OF PAVEMENT AND HANDHOLE. (TYP. FOR LOOPS THAT TERMINATE IN HANDHOLES OUTSIDE PAVEMENT)

250'(75m) [TYP.-ALL LEGS-VOLUME DENSITY ("FAR OUT" DETECTION)]

OFF SET LOOPS BY 1' (300mm) FOR STRAIGHT SAW CUTS.

N.T.S.

DETAIL 1
N.T.S.

FILE NAME: P:\2019\11-19-2019\11-19-2019.dwg	USER NAME = footemj	DESIGNED -	REVISED -	STATE OF ILLINOIS DEPARTMENT OF TRANSPORTATION	DISTRICT 1 – DETECTOR LOOP INSTALLATION DETAILS FOR ROADWAY RESURFACING			F.A. RTE.	SECTION	COUNTY	TOTAL SHEETS	SHEET NO.	
		DRAWN -	REVISED -										
	PLOT SCALE = 50.0000 ' / in.	CHECKED - R.K.F.	REVISED -		SCALE: NONE			SHEET 1 OF 1 SHEETS			STA. TO STA.		
	PLOT DATE = 3/4/2019	DATE -	REVISED -										
							TS-07			CONTRACT NO.			
							ILLINOIS	FED. AID PROJECT					

<div>aGroup</div> <div>, Chicago, IL 60631</div> <div>v.ciorba.com</div>	USER NAME = aharn	DESIGNED - AMH	REVISED -	<div>STATE OF ILLINOIS</div> <div>DEPARTMENT OF TRANSPORTATION</div>	<div>CENTRAL AVENUE LOCAL AGENCY FUNCTIONAL OVERLAY</div> <div>DISTRICT ONE DETAILS - TS-07</div>	F.A.U. RTE.			SECTION	COUNTY	TOTAL SHEETS	S
		DRAWN - AMH	REVISED -			2794	24-00113-00-RS	COOK	32			
	PLOT SCALE = 1" = 20'	CHECKED - EPS	REVISED -			CONTRACT NO. 6116						
	PLOT DATE = 11/4/2024	DATE - 3/26/2025	REVISED -			SCALE: NTS	SHEET OF SHEETS	STA. TO STA.	ILLINOIS	FED. AID PROJECT		