

06-13-2025 LETTING ITEM 008

FOR INDEX OF SHEETS, SEE SHEET NO. 2

FOR INDEX OF HIGHWAY STANDARDS, SEE SHEET NO. 2

TRAFFIC DATA
SOUTH ELGIN BOULEVARD/
RAYMOND STREET
MAJOR COLLECTOR
POSTED SPEED: 30 MPH
2020 ADT: 3,100

STATE OF ILLINOIS

DEPARTMENT OF TRANSPORTATION

PLANS FOR PROPOSED FEDERAL AID HIGHWAY

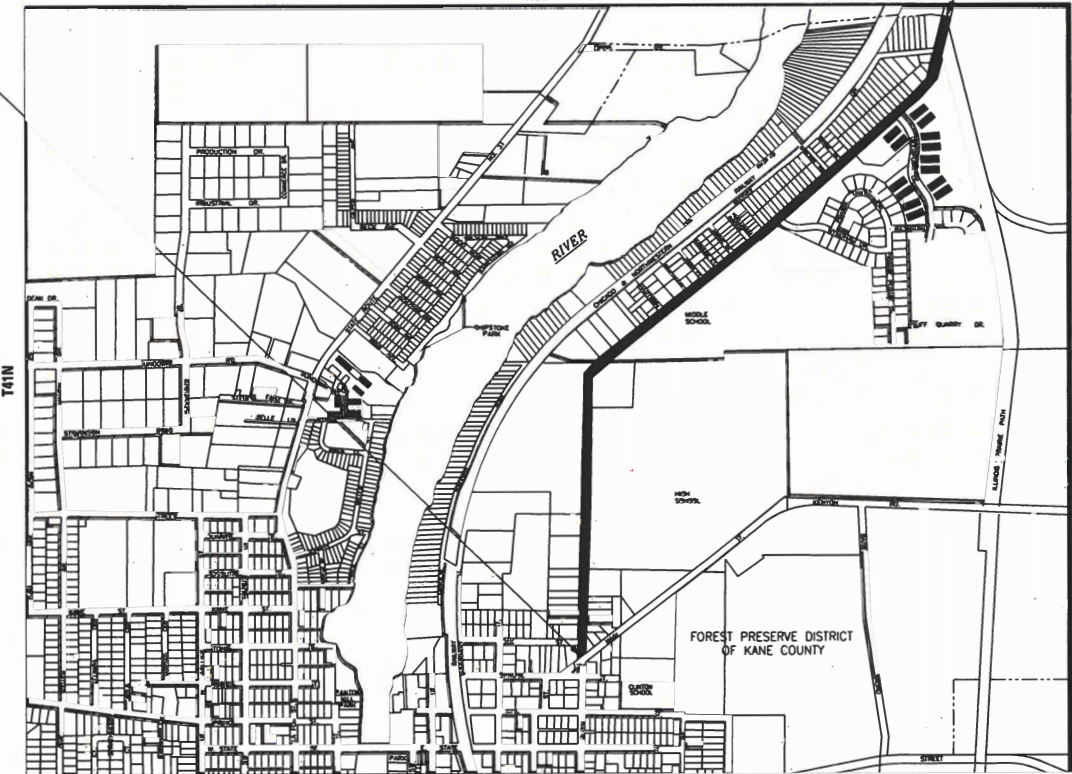
FAU 2517 SOUTH ELGIN BOULEVARD
EAST MAIN STREET TO VILLAGE LIMITS
RESURFACING

SECTION: 24-00060-00-RS
PROJECT: 277K(198)
VILLAGE OF SOUTH ELGIN
KANE COUNTY

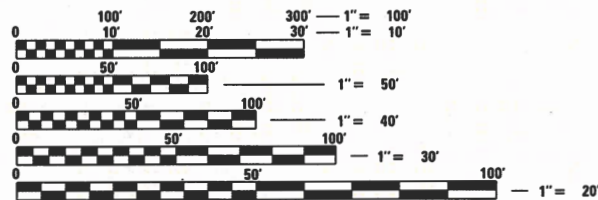
C-91-165-25
LOCATION MAP
NOT TO SCALE

SOUTH ELGIN BLVD
IMPROVEMENT ENDS
STA. 175 + 27

SOUTH ELGIN BLVD
IMPROVEMENT BEGINS
STA. 104 + 40



GROSS LENGTH = 7,087 FT. = 1.34 MILES
NET LENGTH = 7,087 FT. = 1.34 MILES



FULL SIZE PLANS HAVE BEEN PREPARED USING STANDARD
ENGINEERING SCALES. REDUCED SIZED PLANS WILL NOT
CONFORM TO STANDARD SCALES. IN MAKING MEASUREMENTS
ON REDUCED PLANS, THE ABOVE SCALES MAY BE USED.

J.U.L.I.E. DESIGN STAGE REQUEST
DIG. No. A242881509



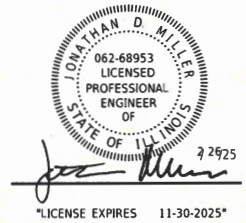
CONTACT JULIE AT 811 OR 800-892-0123
WITH THE FOLLOWING:

COUNTY = KANE
CITY-TOWNSHIP = SOUTH ELGIN - ELGIN
SEC. & 1/4 SEC. NO. = S25, 26, 35
48 HOURS (2 working days) BEFORE YOU DIG

CONTRACT NO. 61L60

BAXTER & WOODMAN
Consulting Engineers

F.A.U. RTE.	SECTION	COUNTY	TOTAL SHEETS	SHEET NO.
2517	24-00060-00-RS	KANE	25	1
277K(198)		ILLINOIS	CONTRACT NO. 61L60	



STATE OF ILLINOIS DEPARTMENT OF TRANSPORTATION DIVISION OF HIGHWAYS	
APPROVED	<i>Michael D. Miller</i> 2/26/25 Director of Public Works VILLAGE OF SOUTH ELGIN
PASSED	<i>April 10, 2025</i> District 1 Engineer of Local Roads and Streets
RELEASING FOR BID BASED ON LIMITED REVIEW	<i>April 10, 2025</i> Regional Engineer

PRINTED BY THE AUTHORITY
OF THE STATE OF ILLINOIS

STATE OF ILLINOIS - PROFESSIONAL DESIGN FIRM
LICENSE NO. 184-001121 - EXPIRES 4/30/2025
\$PLOTEDBY\$ 4/7/2025 8:51:52 AM
\$PENTBLAS\$
\$FILES\$
FILE NAME: F:\ELGIN\222414-Elgin Blvd 5TP Imp\CD00\Sheets\Phase 2\22414_SHT-GenNotes.dgn



USER NAME = jmillier	DESIGNED - JDM	REVISED -
	DRAWN - MVV	REVISED -
PLOT SCALE = \$SCALE\$	CHECKED - JCC	REVISED -
PLOT DATE = 4/1/2025	DATE - 4/1/2025	FILE - 222414_SHT-GenNotes.dgn

STATE OF ILLINOIS
DEPARTMENT OF TRANSPORTATION

GENERAL NOTES, HIGHWAY STANDARDS,
AND INDEX OF SHEETS

SCALE: NTS SHEET 1 OF 1 SHEETS STA. TO STA.

F.A.U. RTE.	SECTION	COUNTY	TOTAL SHEETS	SHEET NO.
2517	24-00060-00-R5	KANE	25	2
ILLINOIS			CONTRACT NO. 61L60	
FED. AID PROJECT			277K(198)	

GENERAL NOTES

- ALL CONSTRUCTION SHALL BE DONE IN ACCORDANCE WITH THE DETAILS IN THE PLANS, THE SPECIAL PROVISIONS INCLUDED IN THE CONTRACT DOCUMENTS, AND THE FOLLOWING STATE OF ILLINOIS SPECIFICATIONS: "THE STANDARD SPECIFICATIONS FOR ROAD AND BRIDGE CONSTRUCTION" (REFERRED TO AS THE "STANDARD SPECIFICATIONS"), THE "SUPPLEMENTAL SPECIFICATIONS AND RECURRING SPECIAL PROVISIONS", THE "MANUAL ON UNIFORM TRAFFIC CONTROL DEVICES FOR STREETS AND HIGHWAYS", THE "MANUAL OF TEST PROCEDURES FOR MATERIALS" AND THE "STANDARD SPECIFICATIONS FOR WATER AND SEWER MAIN CONSTRUCTION IN ILLINOIS".
- UTILITY LOCATIONS HAVE NOT BEEN SHOWN ON THESE PLANS. THE CONTRACTOR SHALL BE RESPONSIBLE FOR THE PROTECTION OF ALL UNDERGROUND OR SURFACE UTILITIES, INCLUDING SPRINKLER SYSTEMS, EVEN THOUGH THEY MAY NOT BE SHOWN ON THE PLANS
- ACCESS TO PRIVATE DRIVEWAYS SHALL BE PROVIDED AT ALL TIMES EXCEPT DURING ACTUAL CONSTRUCTION ADJACENT THERE TO. DRIVEWAY REPLACEMENT AND CURB AND GUTTER REPLACEMENT ACROSS COMMERCIAL DRIVEWAYS SHALL BE CONSTRUCTED HALF AT A TIME TO MAINTAIN ACCESS.
- IT WILL BE THE CONTRACTOR'S RESPONSIBILITY TO NOTIFY THE ENGINEER, RESIDENTS/BUSINESSES, AND THE VILLAGE WHEN ACCESS TO DRIVEWAYS WILL BE TEMPORARILY CLOSED DUE TO CURB AND GUTTER AND/OR DRIVEWAY REPLACEMENT. THE CONTRACTOR SHALL DISTRIBUTE NOTICES PROVIDED BY THE VILLAGE TO RESIDENTS/BUSINESSES AT LEAST 24 HOURS PRIOR TO PLANNED CLOSURE. EVERY EFFORT SHALL BE MADE TO ACCOMMODATE ACCESS TO THESE PROPERTIES INCLUDING KNOCKING ON DOORS WHEN DRIVEWAYS ARE ABOUT TO BE CLOSED.
- THE DAYS PAVING OPERATION SHOULD RESULT IN A SINGLE TRANSVERSE JOINT. ANY COLD LONGITUDINAL JOINTS WILL NOT BE ACCEPTED. PROVIDING A SINGLE TRANSVERSE JOINT SHALL BE ACCOMPLISHED BY PAVING ONE LANE OF SUFFICIENT LENGTH THAT WILL ALLOW FOR THE PAVING OF THE ADJACENT LANE IN THE SAME DAY.
- CONTRACTOR SHALL TAKE PRECAUTION BY PRESERVING EXISTING TREES WITHIN THE RIGHT OF WAY. IF ANY DAMAGE OCCURS, TREES SHALL BE REPLACED IN KIND PER ARTICLE 201.07 REPAIR OR REPLACEMENT OF EXISTING PLANT MATERIAL REQUIREMENTS STATED HEREIN.
- ALL STREETS SHALL BE OPEN TO TWO-WAY TRAFFIC AT THE END OF EACH DAY.
- INLET FILTERS SHALL BE INSTALLED ON OPEN LID STRUCTURES AS DIRECTED BY ENGINEER.
- BEFORE BEGINNING ANY WORK, THE CONTRACTOR SHALL RETAIN AND RECORD FOR FUTURE REFERENCE, ALL EXISTING PAVEMENT MARKING LINES (AND RAISED REFLECTIVE PAVEMENT MARKERS) IN ORDER THAT THESE LOCATIONS CAN BE RE-ESTABLISHED FOR STRIPING. EXACT LOCATIONS OF ALL PAVEMENT MARKINGS SHALL BE SHOWN ON THE PLANS, PER DISTRICT 1 DETAILS, OR AS DIRECTED BY THE RESIDENT ENGINEER.
- AFTER AUGUST 11, 2025 ON SCHOOL DAYS WHEN CHILDREN ARE PRESENT, ANY WORK WHICH MAY INTERFERE WITH TRAFFIC FLOW AT SCHOOL ENTRANCES SHALL BE PERFORMED BETWEEN 9:00 A.M. AND 3:00 P.M. ONLY. FLAGGERS SHALL BE USED FOR ALL SUCH OPERATIONS. THE CONTRACTOR SHALL NOT BLOCK ENTRANCES DURING THE FOLLOWING SCHOOL DROP-OFF TIMES: 8:00 AM - 8:45 AM, 3:15 PM - 3:45 PM.

INDEX OF SHEETS

1	COVER
2	GENERAL NOTES, HIGHWAY STANDARDS, AND INDEX OF SHEETS
3 - 6	SUMMARY OF QUANTITIES
7 - 8	TYPICAL SECTIONS AND HOT-MIX ASPHALT MIXTURE REQUIREMENTS
9 - 15	ROADWAY PLAN
16	MISCELLANEOUS DETAILS
17 - 25	DISTRICT ONE DETAILS

D1 DETAIL

BD600-03 (BD-08)	DETAILS FOR FRAMES AND LIDS ADJUSTMENT WITH MILLING
BD400-04 (BD-22)	PAVEMENT PATCHING FOR HMA SURFACED PAVEMENT
BD600-06 (BD-24)	CURB OR CURB AND GUTTER REMOVAL AND REPLACEMENT
BD400-05 (BD-32)	BUTT JOINT AND HMA TAPER DETAILS
TC-10	TRAFFIC CONTROL AND PROTECTION FOR SIDEROADS, INTERSECTIONS, AND DRIVEWAYS
TC-11	TYPICAL APPLICATIONS RAISED REFLECTIVE PAVEMENT MARKERS (SNOW-PLOW RESISTANT)
TC-13	DISTRICT ONE TYPICAL PAVEMENT MARKINGS
TC-16	SHORT TERM PAVEMENT MARKING LETTERS AND SYMBOLS
TC-22	ARTERIAL ROAD INFORMATION SIGN

HIGHWAY STANDARDS

000001-08	STANDARD SYMBOLS, ABBREVIATIONS AND PATTERNS
424001-12	PERPENDICULAR CURB RAMPS FOR SIDEWALKS
442201-03	CLASS C AND D PATCHES
606001-08	CONCRETE CURB TYPE B AND COMBINATION CONCRETE CURB AND GUTTER
701006-05	OFF-RD OPERATIONS, 2L, 2W, 15' (4.5 m) TO 24" (600 mm) FROM PAVEMENT EDGE
701011-04	OFF-RD MOVING OPERATIONS, 2L, 2W, DAY ONLY
701301-04	LANE CLOSURE, 2L, 2W, SHORT TIME OPERATIONS
701311-03	LANE CLOSURE 2L, 2W MOVING OPERATIONS - DAY ONLY
701502-09	URBAN LANE CLOSURE, 2L, 2W, WITH BIDIRECTIONAL LEFT TURN LANE
701701-10	URBAN LANE CLOSURE, MULTILANE INTERSECTION
701801-06	SIDEWALK, CORNER OR CROSSWALK CLOSURE
701901-10	TRAFFIC CONTROL DEVICES
780001-05	TYPICAL PAVEMENT MARKINGS

COMMITMENTS:

DURING CONSTRUCTION THE CONTRACTOR SHALL MAINTAIN
ACCESS TO THE ENTIRE PROPERTY OF THE FIRE STATION
LOCATED AT 498 UNIT A SOUTH ELGIN BLVD

STATE OF ILLINOIS - PROFESSIONAL DESIGN FIRM
LICENSE NO. - 184-001121 - EXPIRES 4/30/2025
\$PLOTEDBY\$ 4/1/2025 8:51:57 AM
FILE NAME: P:\SELG\222414-SElgin Blvd STP Imp\G000(Sheets)\Phase 2\222414_SHT-500.dgn

\$PLTDRVA\$
\$PENTBLAS\$
\$FILES\$



USER NAME	= jmillr
PLOT SCALE	= \$\$CALE\$
PLOT DATE	= 4/1/2025

DESIGNED -	JDM
DRAWN -	MVV
CHECKED -	JCC
DATE	- 4/1/2025

REVISED -	
REVISED -	
REVISED -	
FILE	- 222414_SHT-SOQ.dgn

STATE OF ILLINOIS
DEPARTMENT OF TRANSPORTATION

SUMMARY OF QUANTITIES

SCALE: NTS SHEET 1 OF 4 SHEETS STA. TO STA.

F.A.U. RTE.	SECTION	COUNTY	TOTAL SHEETS	SHEET NO.
2517	24-00060-00-R5	KANE	25	3
CONTRACT NO. 61L60				
ILLINOIS		FED. AID PROJECT 277K(198)		

* INDICATES SPECIALTY ITEM

CODE NO.	ITEM	UNIT	SOUTH ELGIN BOULEVARD STP (75% FED, 25% LOCAL)
			ROADWAY
			0005 Urban
20201200	REMOVAL AND DISPOSAL OF UNSUITABLE MATERIAL	CU YD	269
21001000	GEOTECHNICAL FABRIC FOR GROUND STABILIZATION	SQ YD	805
21101615	TOPSOIL FURNISH AND PLACE, 4"	SQ YD	536
25000210	SEEDING, CLASS 2A	ACRE	0.25
25000400	NITROGEN FERTILIZER NUTRIENT	POUND	23
25000500	PHOSPHORUS FERTILIZER NUTRIENT	POUND	23
25000600	POTASSIUM FERTILIZER NUTRIENT	POUND	23
25100630	EROSION CONTROL BLANKET	SQ YD	536
28000510	INLET FILTERS	EACH	48
30300001	AGGREGATE SUBGRADE IMPROVEMENT	CU YD	269
35101600	AGGREGATE BASE COURSE, TYPE B 4"	SQ YD	615
40600290	BITUMINOUS MATERIALS (TACK COAT)	POUND	21,800
40600370	LONGITUDINAL JOINT SEALANT	FOOT	14,174
40600400	MIXTURE FOR CRACKS, JOINTS, AND FLANGEWAYS	TON	47
40600982	HOT-MIX ASPHALT SURFACE REMOVAL - BUTT JOINT	SQ YD	30

STATE OF ILLINOIS - PROFESSIONAL DESIGN FIRM \$PLTDRA\$
LICENSE NO. - 184-001121 - EXPIRES 4/30/\$YEAR2 \$PENTBLAS\$
\$PLOTEDBY\$ 4/1/2025 8:52:01 AM \$FILES\$
FILE NAME: P:\SELG\0222414-SElgin Blvd STP Imp\CADD\Sheets\Phase 2\222414_SHT-500.dgn



USER NAME	= jmillr	DESIGNED -	JDM
		DRAWN -	MVV
PLOT SCALE	= \$\$CALE\$	CHECKED -	JCC
PLOT DATE	= 4/1/2025	DATE	- 4/1/2025

REVISED	-
REVISED	-
REVISED	-
FILE	- 222414_SHT-SOQ.dgn

STATE OF ILLINOIS
DEPARTMENT OF TRANSPORTATION

SUMMARY OF QUANTITIES

SCALE: NTS SHEET 2 OF 4 SHEETS STA. TO STA.

F.A.U. RTE.	SECTION	COUNTY	TOTAL SHEETS	SHEET NO.
2517	24-00060-00-R5	KANE	25	4
CONTRACT NO. 61L60				
ILLINOIS FED. AID PROJECT 277K(198)				

			SOUTH ELGIN BOULEVARD STP (75% FED, 25% LOCAL)
CODE NO.	ITEM	UNIT	ROADWAY
			0005
			Urban
40603200	POLYMERZED HOT-MIX ASPHALT BINDER COURSE, IL-4.75, N50	TON	1,352
40604060	HOT-MIX ASPHALT SURFACE COURSE, IL-9.5, MIX "D", N50	TON	3,154
42300200	PORTLAND CEMENT CONCRETE DRIVEWAY PAVEMENT, 6 INCH	SQ YD	529
42300400	PORTLAND CEMENT CONCRETE DRIVEWAY PAVEMENT, 8 INCH	SQ YD	56
42400200	PORTLAND CEMENT CONCRETE SIDEWALK 5 INCH	SQ FT	275
42400800	DETECTABLE WARNINGS	SQ FT	74
44000159	HOT-MIX ASPHALT SURFACE REMOVAL, 2 1/2"	SQ YD	32,181
44000200	DRIVEWAY PAVEMENT REMOVAL	SQ YD	585
44000600	SIDEWALK REMOVAL	SQ FT	275
44201737	CLASS D PATCHES, TYPE I, 8 INCH	SQ YD	322
44201741	CLASS D PATCHES, TYPE II, 8 INCH	SQ YD	644
44201745	CLASS D PATCHES, TYPE III, 8 INCH	SQ YD	966
44201747	CLASS D PATCHES, TYPE IV, 8 INCH	SQ YD	1,288
48102100	AGGREGATE WEDGE SHOULDER, TYPE B	TON	40
48301000	PROTECTIVE COAT	SQ YD	350

* INDICATES SPECIALTY ITEM

STATE OF ILLINOIS - PROFESSIONAL DESIGN FIRM \$PLTDRVA\$
LICENSE NO. - 184-001121 - EXPIRES 4/30/\$YEAR2 \$PENTBLA\$
\$PLOTEDBY\$ 4/1/2025 8:52:05 AM \$FILE\$
FILE NAME: P:\S\G\222414-SEign Blvd 5TP Imp\CA000\Sheets\Phase 2\222414_SHT-50Q.dgn



USER NAME = jmillier	DESIGNED - JDM	REVISED -
	DRAWN - MVV	REVISED -
PLOT SCALE = \$SCALE\$	CHECKED - JCC	REVISED -
PLOT DATE = 4/1/2025	DATE - 4/1/2025	FILE - 222414_SHT-50Q.dgn

* INDICATES SPECIALTY ITEM

CODE NO.	ITEM	UNIT	SOUTH ELGIN BOULEVARD STP (75% FED, 25% LOCAL)
			ROADWAY
			0005
			Urban
* 66900200	NON-SPECIAL WASTE DISPOSAL	CU YD	60
* 66900530	SOIL DISPOSAL ANALYSIS	EACH	4
* 66901001	REGULATED SUBSTANCES PRE-CONSTRUCTION PLAN	L SUM	1
* 66901003	REGULATED SUBSTANCES FINAL CONSTRUCTION REPORT	L SUM	1
* 66901006	REGULATED SUBSTANCES MONITORING	CAL DA	15
67100100	MOBILIZATION	L SUM	1
70102622	TRAFFIC CONTROL AND PROTECTION, STANDARD 701502	L SUM	1
70300100	SHORT TERM PAVEMENT MARKING	FOOT	4,254
70300150	SHORT TERM PAVEMENT MARKING REMOVAL	SQ FT	1,418
* 78000100	THERMOPLASTIC PAVEMENT MARKING - LETTERS AND SYMBOLS	SQ FT	1,170
* 78000200	THERMOPLASTIC PAVEMENT MARKING - LINE 4"	FOOT	33,542
* 78000400	THERMOPLASTIC PAVEMENT MARKING - LINE 6"	FOOT	1,990
* 78000600	THERMOPLASTIC PAVEMENT MARKING - LINE 12"	FOOT	807
* 78100100	RAISED REFLECTIVE PAVEMENT MARKER	EACH	320
78300200	RAISED REFLECTIVE PAVEMENT MARKER REMOVAL	EACH	320

STATE OF ILLINOIS
DEPARTMENT OF TRANSPORTATION

SUMMARY OF QUANTITIES

SCALE: NTS SHEET 3 OF 4 SHEETS STA. TO STA.

F.A.U. RTE.	SECTION	COUNTY	TOTAL SHEETS	SHEET NO.
2517	24-00060-00-R5	KANE	25	5
CONTRACT NO. 61L60				
ILLINOIS FED. AID PROJECT 277K(198)				

STATE OF ILLINOIS - PROFESSIONAL DESIGN FIRM \$PLTDRVA\$
 LICENSE NO. - 184-001121 - EXPIRES 4/30/SYEAR2 \$PENTBLA\$
 \$PLOTTEDBY\$ 4/1/2025 8:52:08 AM \$FILES\$
 MODEL: Default
 FILE NAME: P:\SELGW222414-SElgwin Blvd STP Imp\CADD\Sheets\Phase 2\222414_SHT-500.dgn

[illegible]

* INDICATES SPECIALTY ITEM

<div><div>BAXTER & WOODMAN</div><div>Consulting Engineers</div></div>	USER NAME = jmiller	DESIGNED - JDM	REVISED -	STATE OF ILLINOIS DEPARTMENT OF TRANSPORTATION	SUMMARY OF QUANTITIES					F.A.U. RTE.	SECTION	COUNTY	TOTAL SHEETS	SHEET NO.
	PLOT SCALE = \$SCALE5	DRAWN - MVV	REVISED -							2517	24-00060-00-RS	KANE	25	6
	PLOT DATE = 4/1/2025	CHECKED - JCC	REVISED -		CONTRACT NO. 61L60									
	FILE - 222414_SHT-SOQ.dgn	DATE - 4/1/2025	SCALE: NTS		SHEET 4 OF 4 SHEETS	STA.	TO STA.	ILLINOIS FED. AID PROJECT 277K(198)						

STATE OF ILLINOIS - PROFESSIONAL DESIGN FIRM
LICENSE NO. - 184-001121 - EXPIRES 4/30/2025
\$PLOTEDBY\$ 4/1/2025 8:52:13 AM
FILE NAME: P:\SELG022414-Selgin Blvd STP Imp(CADD)Sheets\Phase 2\222414_SHT-TypSec.dgn



USER NAME = jmilller	DESIGNED - JDM
DRAWN - MVV	REVISED -
PLOT SCALE = \$SCALE\$	CHECKED - JCC
PLOT DATE = 4/1/2025	DATE - 4/1/2025

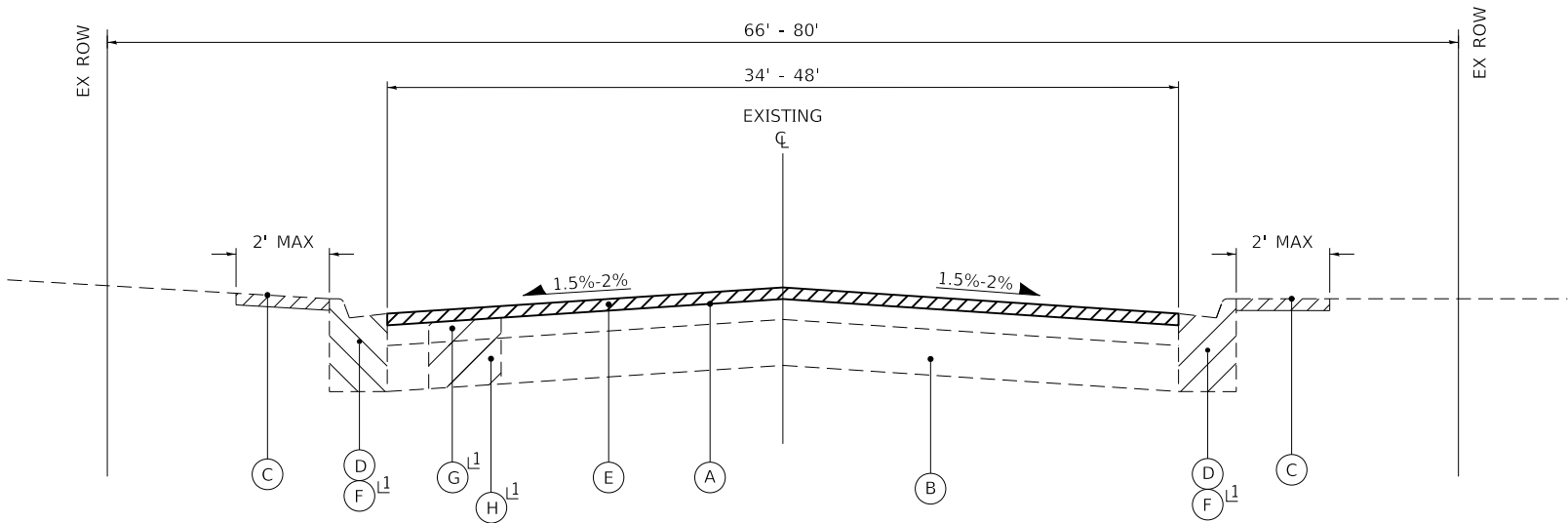
REVISED -	FILE - 222414_SHT-TypSec.dgn
REVISED -	
REVISED -	

STATE OF ILLINOIS
DEPARTMENT OF TRANSPORTATION

TYPICAL SECTIONS AND
HOT-MIX ASPHALT MIXTURE REQUIREMENTS

SCALE: NTS SHEET 1 OF 2 SHEETS STA. TO STA.

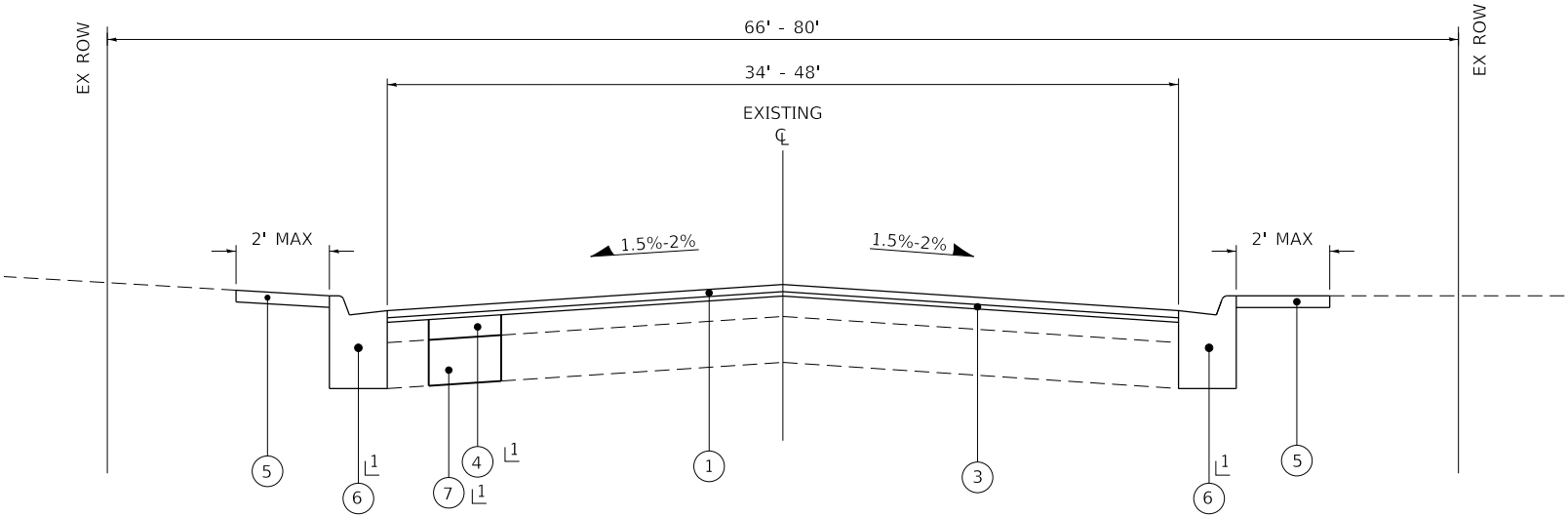
F.A.U. RTE.	SECTION	COUNTY	TOTAL SHEETS	SHEET NO.
2517	24-00060-00-R5	KANE	25	7
CONTRACT NO. 61L60				
ILLINOIS FED. AID PROJECT 277K(198)				



EXISTING TYPICAL SECTION

SOUTH ELGIN BOULEVARD
STA 104+40 TO STA 117+70
STA 132+50 TO STA 175+27

1 LOCATIONS DETERMINED BY ENGINEER



PROPOSED TYPICAL SECTION

SOUTH ELGIN BOULEVARD
STA 104+40 TO STA 117+70
STA 132+50 TO STA 175+27

1 LOCATIONS DETERMINED BY ENGINEER

LONGITUDINAL JOINT SEALANT SHALL BE PLACED OVER THE POLYMERIZED HOT-MIX ASPHALT BINDER COURSE, IL-4.75, N50.

CONTRACTOR SHALL MILL BEFORE PATCHING.

FINISHED HMA 1/4" HIGHER THAN GUTTER FLAG

NOTE:
GEOTECHNICAL FABRIC FOR GROUND STABILIZATION AND/OR AGGREGATE SUBGRADE IMPROVEMENT (CU YD) HAVE BEEN PROVIDED FOR USE AT THE LOCATIONS INDICATED FOR SOILS THAT TEND TO BE UNSTABLE AND/OR UNSUITABLE. THE ACTUAL NEED FOR REMOVAL AND REPLACEMENT WITH ABOVE ITEM WILL BE DETERMINED IN THE FIELD AT THE TIME OF CONSTRUCTION BY THE GEOTECHNICAL ENGINEER. ALL POTENTIALLY UNSTABLE SOILS SHOULD BE TESTED WITH A STATIC OR DYNAMIC CONE PENETROMETER AND TREATED IN ACCORDANCE WITH ARTICLE 301.04 OF THE STANDARD SPECIFICATIONS AND IDOT SUBGRADE STABILITY MANUAL. IF UNSTABLE AND/OR UNSUITABLE SOILS ARE NOT ENCOUNTERED, THEN THE QUANTITY SHALL BE DEDUCTED AND NO ADDITIONAL COMPENSATION WILL BE DUE TO THE CONTRACTOR.

ANY AGGREGATE SUBGRADE IMPROVEMENT CONTAMINATED AND/OR DAMAGED BY THE CONTRACTOR'S VEHICLES AND/OR EQUIPMENT IS TO BE REMOVED AND REPLACED AS DIRECTED BY THE ENGINEER AT CONTRACTOR EXPENSE.

EXISTING LEGEND

- (A) EXISTING HMA BINDER & SURFACE COURSE (7.75"-15.75")
- (B) EXISTING AGGREGATE BASE COURSE (3.75"-12.5+)"
- (C) GROUND SURFACE
- (D) EXISTING COMBINATION CURB AND GUTTER
- (E) HOT-MIX ASPHALT SURFACE REMOVAL 2.25"
- (F) COMBINATION CONCRETE GUTTER REMOVAL AND REPLACEMENT
- (G) REMOVAL FOR CLASS D PATCHING
- (H) REMOVAL AND DISPOSAL OF UNSUITABLE MATERIALS
- [Hatched Box] REMOVAL ITEM

PROPOSED LEGEND

- (1) HOT-MIX ASPHALT SURFACE COURSE, IL-9.5, MIX "D", N50 1.75"
- (2) NOT USED
- (3) POLYMERIZED HOT-MIX ASPHALT BINDER COURSE, IL-4.75, N50 0.75"
- (4) CLASS D PATCHES 8"
- (5) TOPSOIL FURNISH AND PLACE, 4" SEEDING, CLASS 2A, EROSION CONTROL BLANKET
- (6) COMBINATION CONCRETE GUTTER REMOVAL AND REPLACEMENT
- (7) AGGREGATE SUBGRADE IMPROVEMENT

HOT-MIX ASPHALT MIXTURE REQUIREMENTS		
MIXTURE TYPE	AIR VOIDS @ Ndes	QMP
PAVEMENT RESURFACING		
HOT-MIX ASPHALT SURFACE COURSE, IL-9.5, MIX "D", N50 - 1.75"	4% @ 50 Gyr.	LR1030-2
POLYMERIZED HOT-MIX ASPHALT BINDER COURSE, IL-4.75, N50 - 0.75"	3.5% @ 50 Gyr.	LR1030-2
CLASS D PATCHES - 8 INCH		
CLASS D PACHES (HMA BINDER IL-19.0mm) 8"	4% @ 70 Gyr.	LR1030-2
QMP Designation: Quality Control/Quality Assurance (QC/QA) per LR1030-2		

THE UNIT WEIGHT USED TO CALCULATE ALL HMA SURFACE MIXTURE QUANTITIES IS 112 LBS/SQ YD/IN.

THE "AC TYPE" FOR POLYMERIZED HMA MIXES SHALL BE "SBS/SBR PG 76-22" AND FOR NON-POLYMERIZED HMA THE "AC TYPE" SHALL BE "PG 64-22" UNLESS MODIFIED BY RECLAIMED MATERIALS SPECIFICATIONS.

STATE OF ILLINOIS - PROFESSIONAL DESIGN FIRM
LICENSE NO. - 184-001121 - EXPIRES 4/30/2025
\$PLTDRVA\$
\$PENTBLAS\$
\$FILES\$
FILE NAME: P:\SELG022414-South Elgin Blvd STP Imp(CADD)Sheets\Phase 2022\2414_SHT-TypSec.dgn

BAXTER & WOODMAN
Consulting Engineers

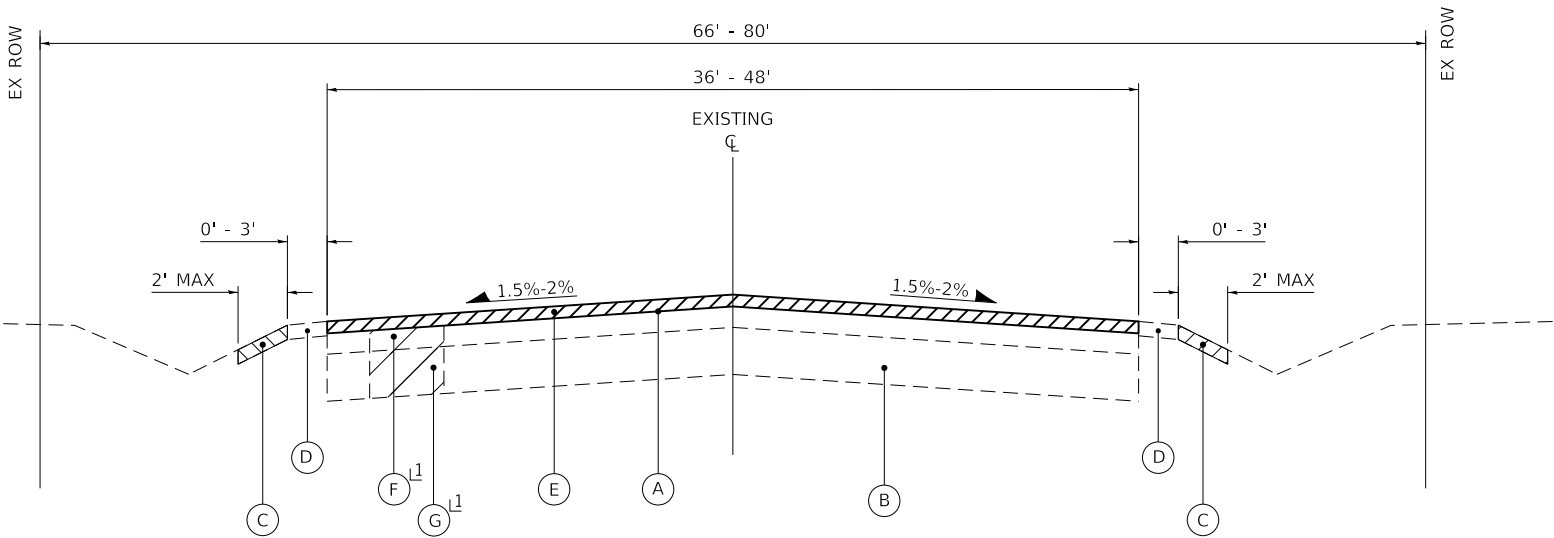
USER NAME = jmilller	DESIGNED - JDM	REVISED -
	DRAWN - MVV	REVISED -
PLOT SCALE = \$SCALE\$	CHECKED - JCC	REVISED -
PLOT DATE = 4/1/2025	DATE - 4/1/2025	FILE - 222414_SHT-TypSec.dgn

STATE OF ILLINOIS
DEPARTMENT OF TRANSPORTATION

TYPICAL SECTIONS

SCALE: NTS SHEET 2 OF 2 SHEETS STA. TO STA.

F.A.U. RTE.	SECTION	COUNTY	TOTAL SHEETS	SHEET NO.
2517	24-00060-00-R5	KANE	25	8
CONTRACT NO. 61L60				
ILLINOIS FED. AID PROJECT 277K(198)				



EXISTING TYPICAL SECTION

SOUTH ELGIN BOULEVARD
STA 117+70 TO STA 132+50

1 LOCATIONS DETERMINED BY ENGINEER

LONGITUDINAL JOINT SEALANT SHALL BE PLACED OVER THE POLYMERIZED HOT-MIX ASPHALT BINDER COURSE, IL-4.75, N50.

CONTRACTOR SHALL MILL BEFORE PATCHING.

FINISHED HMA 1/4" HIGHER THAN GUTTER FLAG

NOTE:
GEOTECHNICAL FABRIC FOR GROUND STABILIZATION AND/OR AGGREGATE SUBGRADE IMPROVEMENT (CU YD) HAVE BEEN PROVIDED FOR USE AT THE LOCATIONS INDICATED FOR SOILS THAT TEND TO BE UNSTABLE AND/OR UNSUITABLE. THE ACTUAL NEED FOR REMOVAL AND REPLACEMENT WITH ABOVE ITEM WILL BE DETERMINED IN THE FIELD AT THE TIME OF CONSTRUCTION BY THE GEOTECHNICAL ENGINEER. ALL POTENTIALLY UNSTABLE SOILS SHOULD BE TESTED WITH A STATIC OR DYNAMIC CONE PENETROMETER AND TREATED IN ACCORDANCE WITH ARTICLE 301.04 OF THE STANDARD SPECIFICATIONS AND IDOT SUBGRADE STABILITY MANUAL. IF UNSTABLE AND/OR UNSUITABLE SOILS ARE NOT ENCOUNTERED, THEN THE QUANTITY SHALL BE DEDUCTED AND NO ADDITIONAL COMPENSATION WILL BE DUE TO THE CONTRACTOR.

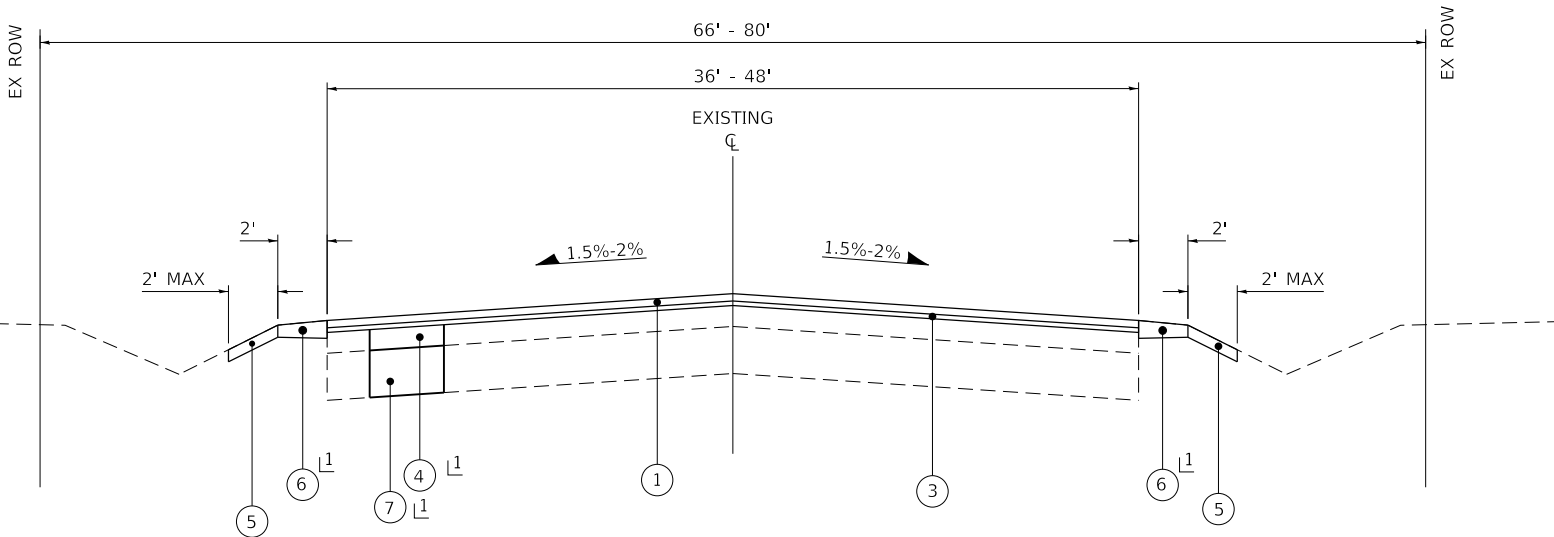
ANY AGGREGATE SUBGRADE IMPROVEMENT CONTAMINATED AND/OR DAMAGED BY THE CONTRACTOR'S VEHICLES AND/OR EQUIPMENT IS TO BE REMOVED AND REPLACED AS DIRECTED BY THE ENGINEER AT CONTRACTOR EXPENSE.

EXISTING LEGEND

- (A) EXISTING HMA BINDER & SURFACE COURSE (7.75"-15.75")
- (B) EXISTING AGGREGATE BASE COURSE (3.75"-12.5+')
- (C) GROUND SURFACE
- (D) EXISTING AGGREGATE SHOULDER
- (E) HOT-MIX ASPHALT SURFACE REMOVAL 2.25"
- (F) REMOVAL FOR CLASS D PATCHING
- (G) REMOVAL AND DISPOSAL OF UNSUITABLE MATERIALS
- [Hatched Box] REMOVAL ITEM

PROPOSED LEGEND

- 1 HOT-MIX ASPHALT SURFACE COURSE, IL-9.5, MIX "D", N50 1.75"
- 2 NOT USED
- 3 POLYMERIZED HOT-MIX ASPHALT BINDER COURSE, IL-4.75, N50 0.75"
- 4 CLASS D PATCHES 8"
- 5 TOPSOIL FURNISH AND PLACE, 4" SEEDING, CLASS 2A, EROSION CONTROL BLANKET
- 6 AGGREGATE WEDGE SHOULDER, TYPE B
- 7 AGGREGATE SUBGRADE IMPROVEMENT



PROPOSED TYPICAL SECTION

SOUTH ELGIN BOULEVARD
STA 117+70 TO STA 132+50

1 LOCATIONS DETERMINED BY ENGINEER

STATE OF ILLINOIS - PROFESSIONAL DESIGN FIRM
LICENSE NO. - 184-001121 - EXPIRES 4/30/2025
\$PLOTEDBY\$ 4/1/2025 8:52:21 AM
\$FILES\$
FILE NAME: P:\SELG022414-South Elgin Blvd STP Imp\CADD\Sheets\Phase 2\222414_SHT-Plan1.dgn



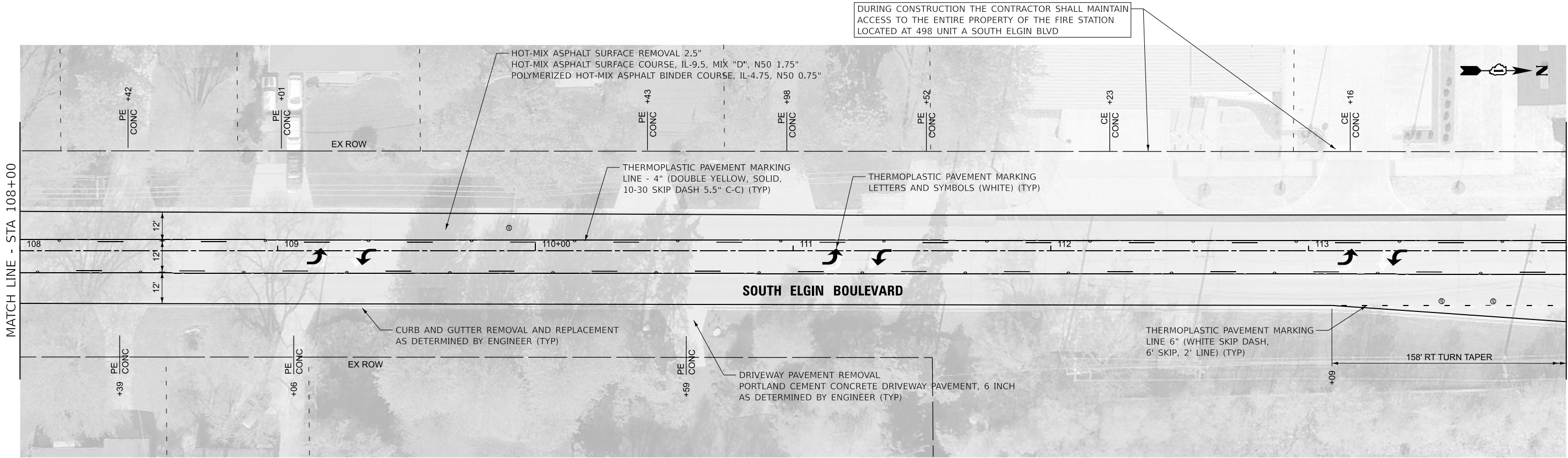
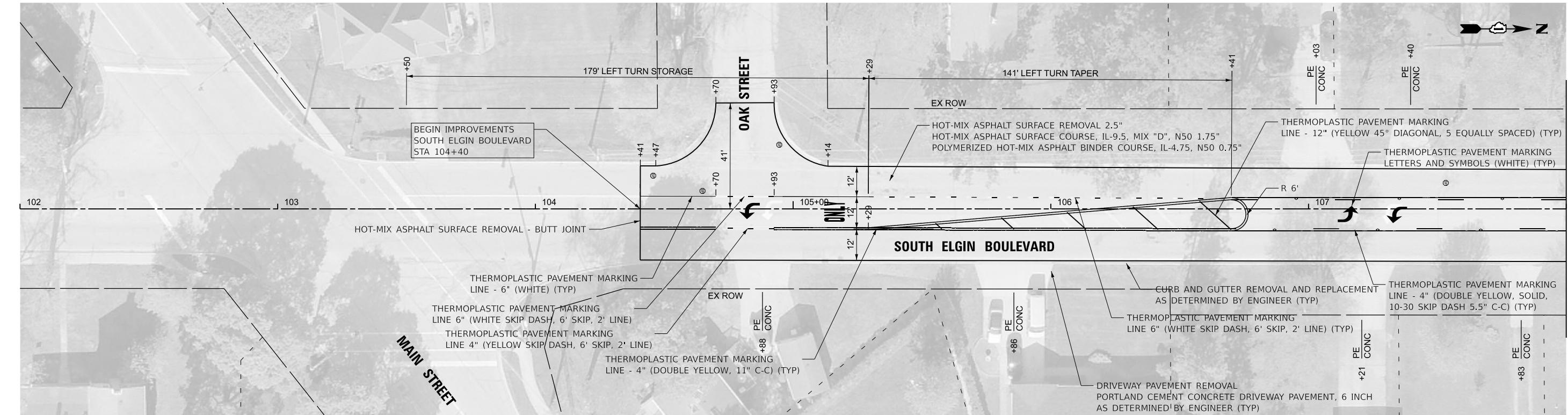
USER NAME = jmillier	DESIGNED - JDM	REVISED -
DRAWN - MVV	REVISED -	
PLOT SCALE = \$SCALE\$	CHECKED - JCC	REVISED -
PLOT DATE = 4/1/2025	DATE - 4/1/2025	FILE - 222414_SHT-Plan1.dgn

STATE OF ILLINOIS
DEPARTMENT OF TRANSPORTATION

ROADWAY PLAN
SOUTH ELGIN BOULEVARD

SCALE: 1" = 20' SHEET 1 OF 7 SHEETS STA. 103+50 TO STA. 114+00

F.A.U. RTE.	SECTION	COUNTY	TOTAL SHEETS	SHEET NO.
2517	24-00060-00-R5	KANE	25	9
CONTRACT NO. 61L60				
ILLINOIS FED. AID PROJECT 277K(198)				



STATE OF ILLINOIS - PROFESSIONAL DESIGN FIRM
LICENSE NO. - 184-001121 - EXPIRES 4/30/2025
\$PLOTEDBY\$ 4/1/2025 8:52:49 AM
\$FILES\$
FILE NAME: P:\SELG022414\S-Elgin Blvd STP Imp(CADD)Sheets\Phase 2\22414_SHT-Plan2.dgn



USER NAME	= jmillier
DESIGNED	- JDM
DRAWN	- MVV
PLOT SCALE	= \$SCALE\$
CHECKED	- JCC
DATE	- 4/1/2025

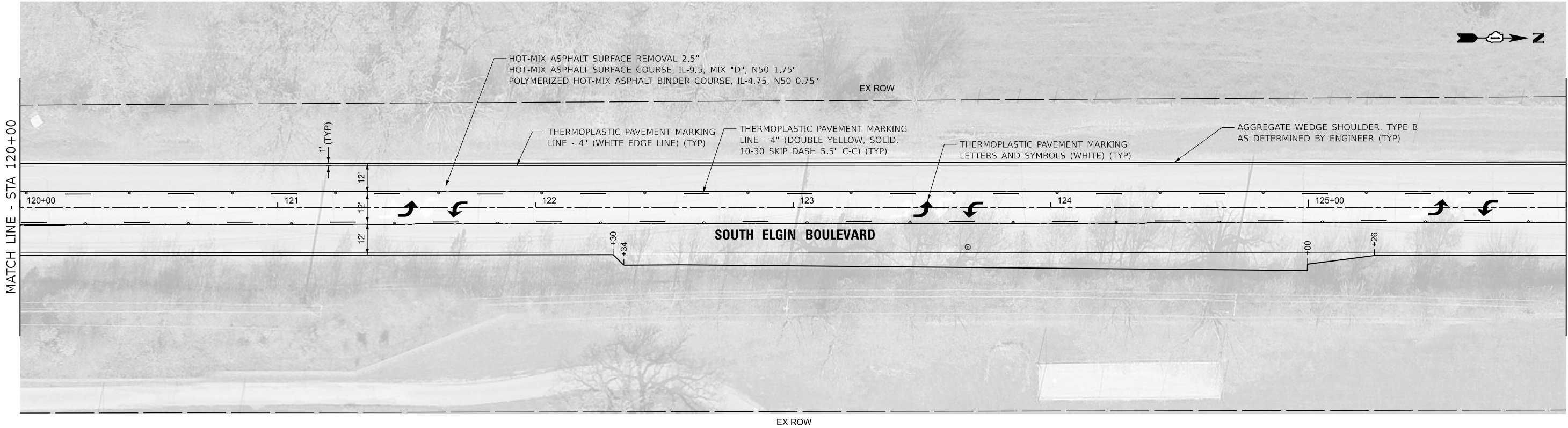
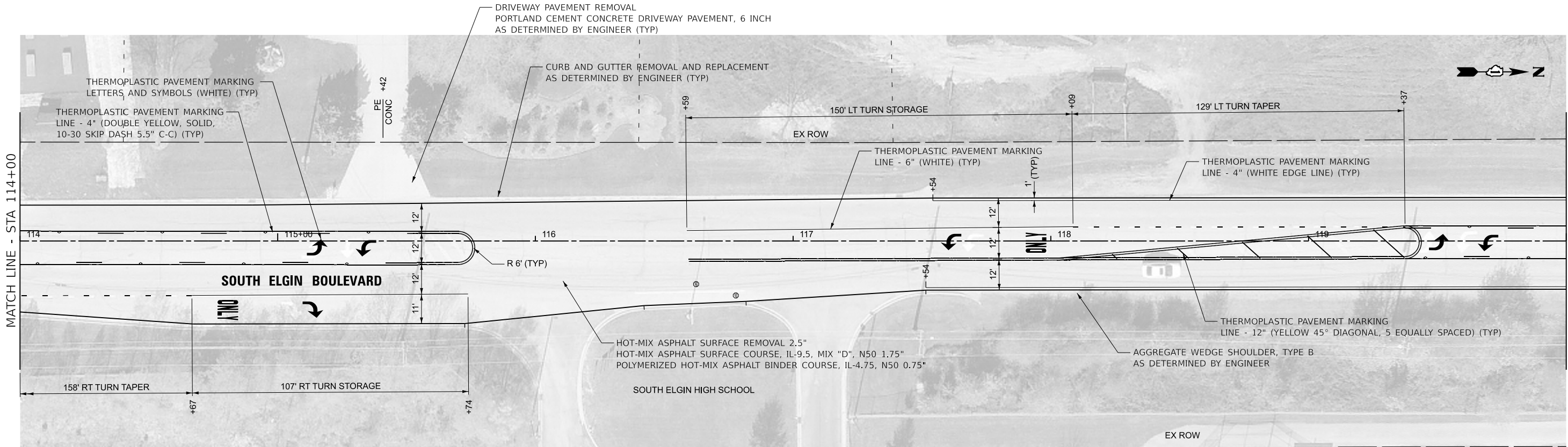
REVISED	-
REVISED	-
REVISED	-
FILE	- 222414_SHT-Plan2.dgn

STATE OF ILLINOIS
DEPARTMENT OF TRANSPORTATION

ROADWAY PLAN
SOUTH ELGIN BOULEVARD

SCALE: 1" = 20' SHEET 2 OF 7 SHEETS STA. 114+00 TO STA. 126+00

F.A.U. RTE.	SECTION	COUNTY	TOTAL SHEETS	SHEET NO.
2517	24-00060-00-R5	KANE	25	10
CONTRACT NO. 61L60				
ILLINOIS FED. AID PROJECT 277K(198)				



STATE OF ILLINOIS - PROFESSIONAL DESIGN FIRM
LICENSE NO. - 184-001121 - EXPIRES 4/30/2025
\$PLOTEDBY\$ 4/1/2025 8:53:15 AM
\$FILES\$
FILE NAME: P:\SELG022414-South Elgin Blvd STP Imp\CGDD\Sheets\Phase 2\222414_SHT-Plan3.dgn

BAXTER & WOODMAN
Consulting Engineers

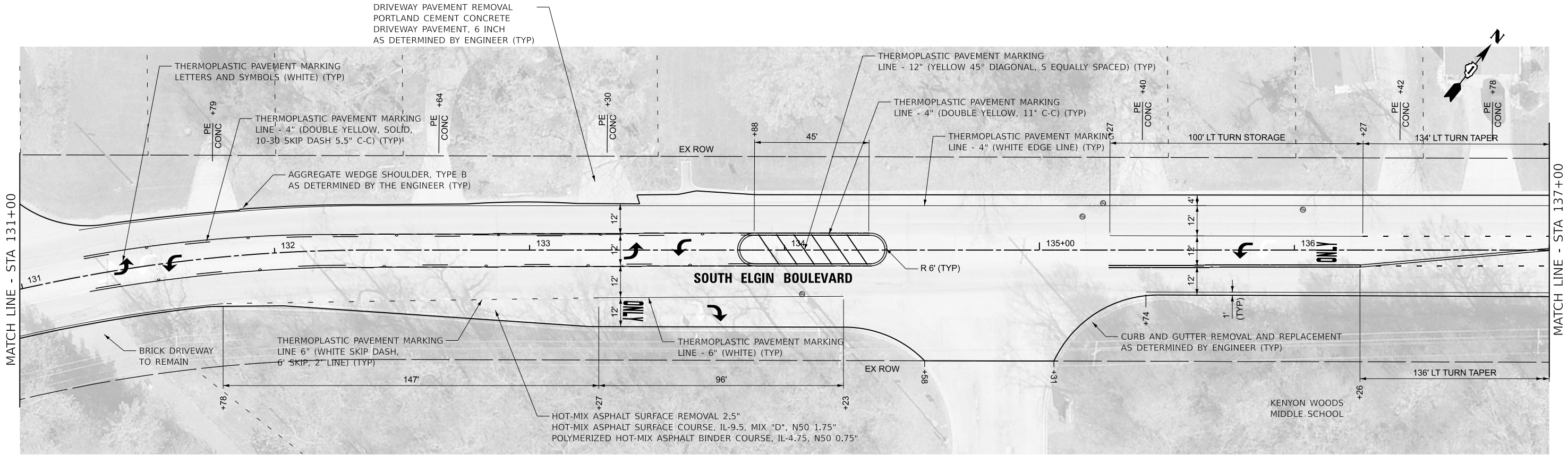
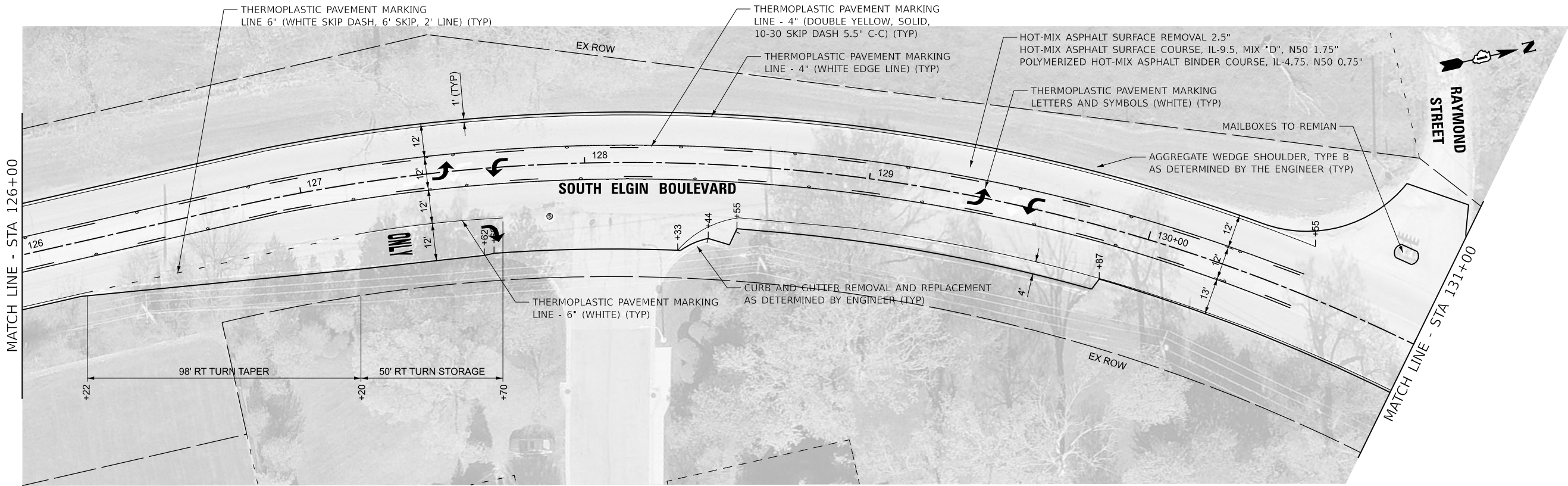
USER NAME = jmilller	DESIGNED - JDM	REVISED -
DRAWN - MVM	REVISED -	
PLOT SCALE = \$SCALE\$	CHECKED - JCC	REVISED -
PLOT DATE = 4/1/2025	DATE - 4/1/2025	FILE - 222414_SHT-Plan3.dgn

STATE OF ILLINOIS
DEPARTMENT OF TRANSPORTATION

ROADWAY PLAN
SOUTH ELGIN BOULEVARD

SCALE: 1" = 20' SHEET 3 OF 7 SHEETS STA. 126+00 TO STA. 137+00

F.A.U. RTE.	SECTION	COUNTY	TOTAL SHEETS	SHEET NO.
2517	24-00060-00-R5	KANE	25	11
CONTRACT NO. 61L60				
ILLINOIS FED. AID PROJECT 277K(198)				



STATE OF ILLINOIS - PROFESSIONAL DESIGN FIRM
LICENSE NO. - 184-001121 - EXPIRES 4/30/2025
PLOTTER BY - 4/1/2025 8:53:42 AM
FILE NAME - P:\SELG022414\SOUTH ELGIN Blvd STP Imp\GDD\Sheets\Phase 2\222414_SHT-Plan4.dgn



USER NAME	= jmillier
DESIGNED	- JDM
DRAWN	- MVV
PLOT SCALE	= \$SCALE\$
CHECKED	- JCC
DATE	- 4/1/2025

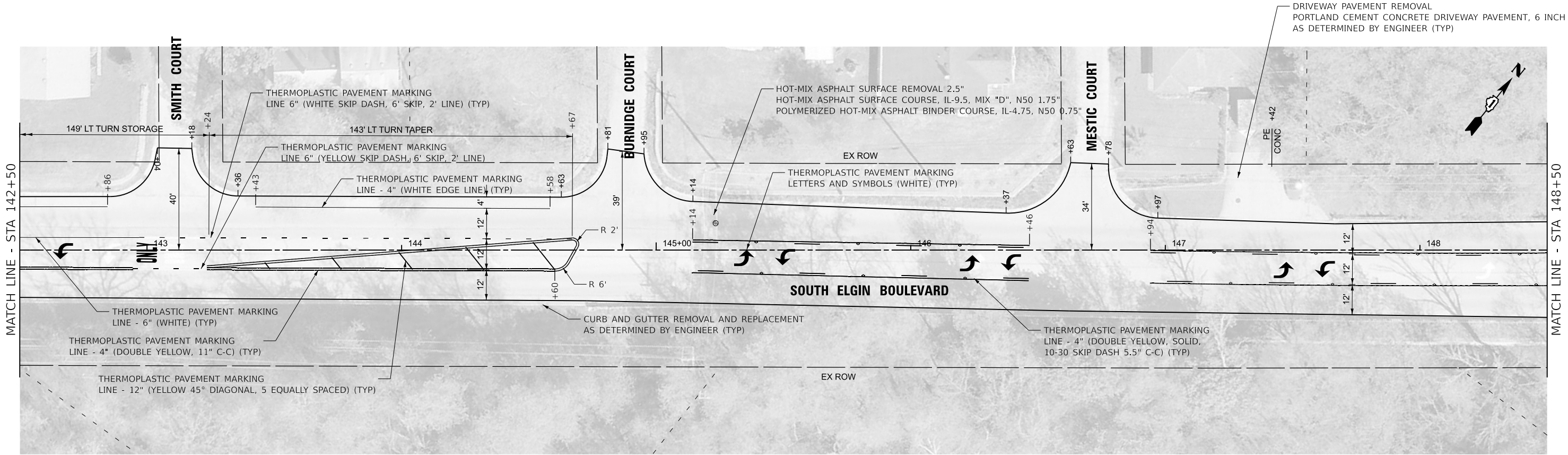
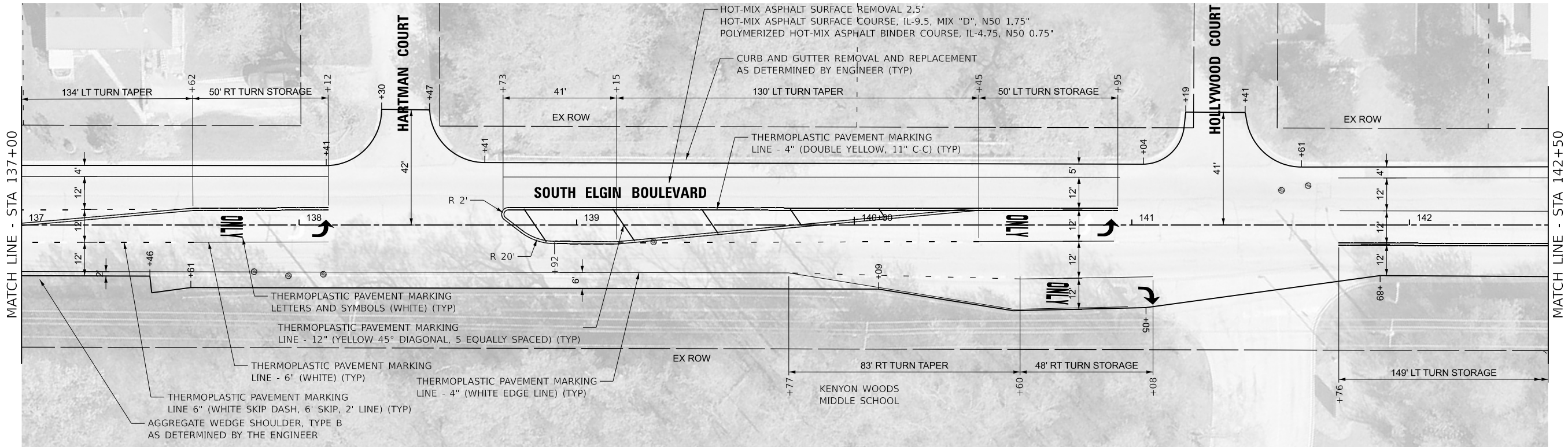
REVISED	-
REVISED	-
REVISED	-
FILE	- 222414_SHT-Plan4.dgn

STATE OF ILLINOIS
DEPARTMENT OF TRANSPORTATION

ROADWAY PLAN
SOUTH ELGIN BOULEVARD

SCALE: 1" = 20' SHEET 4 OF 7 SHEETS STA. 137+00 TO STA. 148+50

F.A.U. RTE.	SECTION	COUNTY	TOTAL SHEETS	SHEET NO.
2517	24-00060-00-R5	KANE	25	12
CONTRACT NO. 61L60				
ILLINOIS FED. AID PROJECT 277K(198)				



STATE OF ILLINOIS - PROFESSIONAL DESIGN FIRM
LICENSE NO. - 184-001121 - EXPIRES 4/30/2025
\$PLOTEDBY\$ 4/1/2025 8:54:11 AM
\$FILES\$
FILE NAME: P:\SELG022414\S-Elgin Blvd STP Imp(CADD\Sheets)\Phase 2\22414_SHT-Plan5.dgn



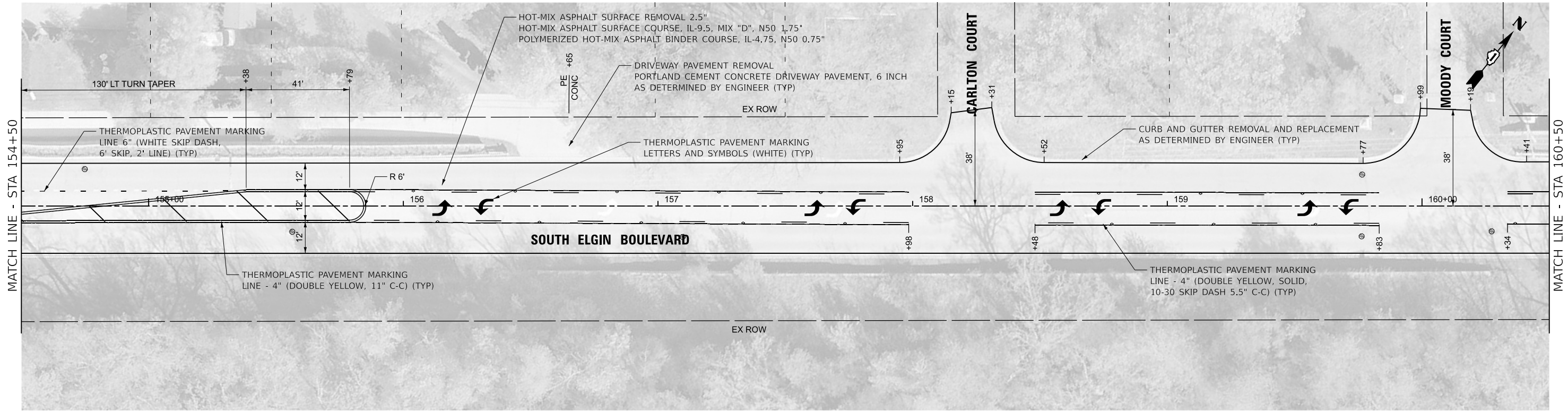
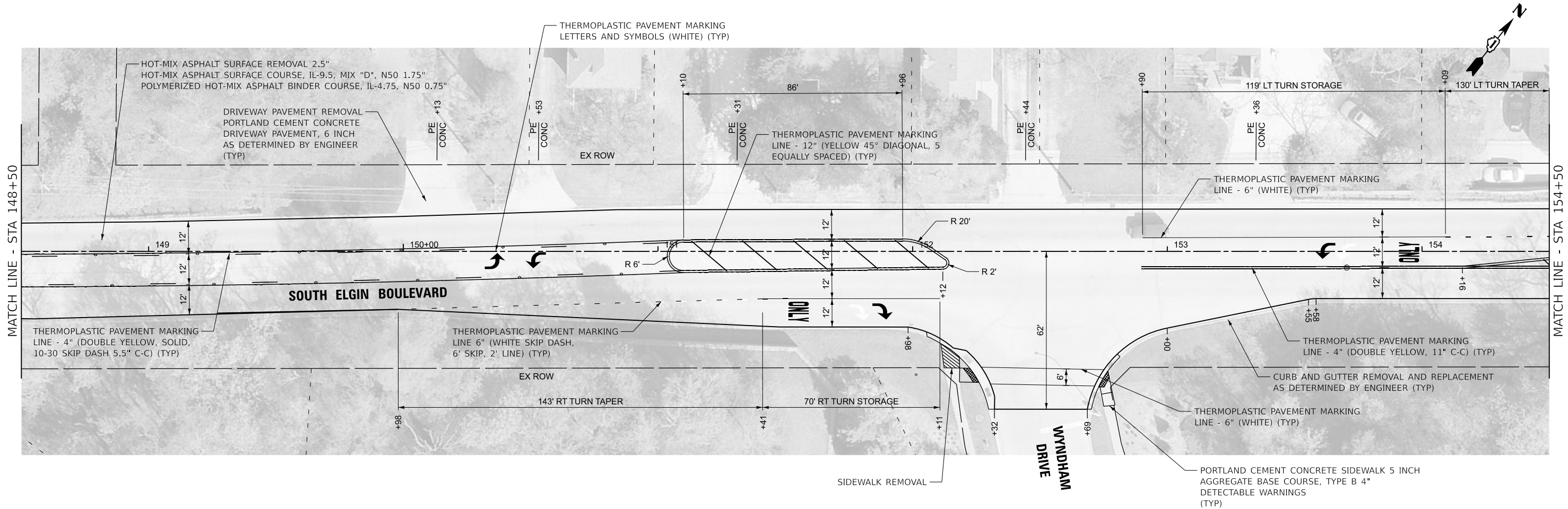
USER NAME = jmilller	DESIGNED - JDM	REVISED -
PLOT SCALE = \$SCALE\$	CHECKED - JCC	REVISED -
PLOT DATE = 4/1/2025	DATE - 4/1/2025	FILE - 222414_SHT-Plan5.dgn

STATE OF ILLINOIS
DEPARTMENT OF TRANSPORTATION

ROADWAY PLAN
SOUTH ELGIN BOULEVARD

SCALE: 1" = 20' SHEET 5 OF 7 SHEETS STA. 148+50 TO STA. 160+50

F.A.U. RTE.	SECTION	COUNTY	TOTAL SHEETS	SHEET NO.
2517	24-00060-00-R5	KANE	25	13
CONTRACT NO. 61L60				
ILLINOIS FED. AID PROJECT 277K(198)				



STATE OF ILLINOIS - PROFESSIONAL DESIGN FIRM
LICENSE NO. - 184-001121 - EXPIRES 4/30/2025
\$PLOTEDBY\$ 4/1/2025 8:54:40 AM
\$FILES\$
FILE NAME: P:\SELG022414-South Elgin Blvd STP Imp(CADD)Sheets\Phase 2\222414_SHT-Plan6.dgn



USER NAME	= jmillier
DESIGNED	- JDM
DRAWN	- MVV
PLOT SCALE	= \$SCALE\$
CHECKED	- JCC
PLOT DATE	= 4/1/2025

DESIGNED	- JDM
REVIS	-
REVIS	-
REVIS	-

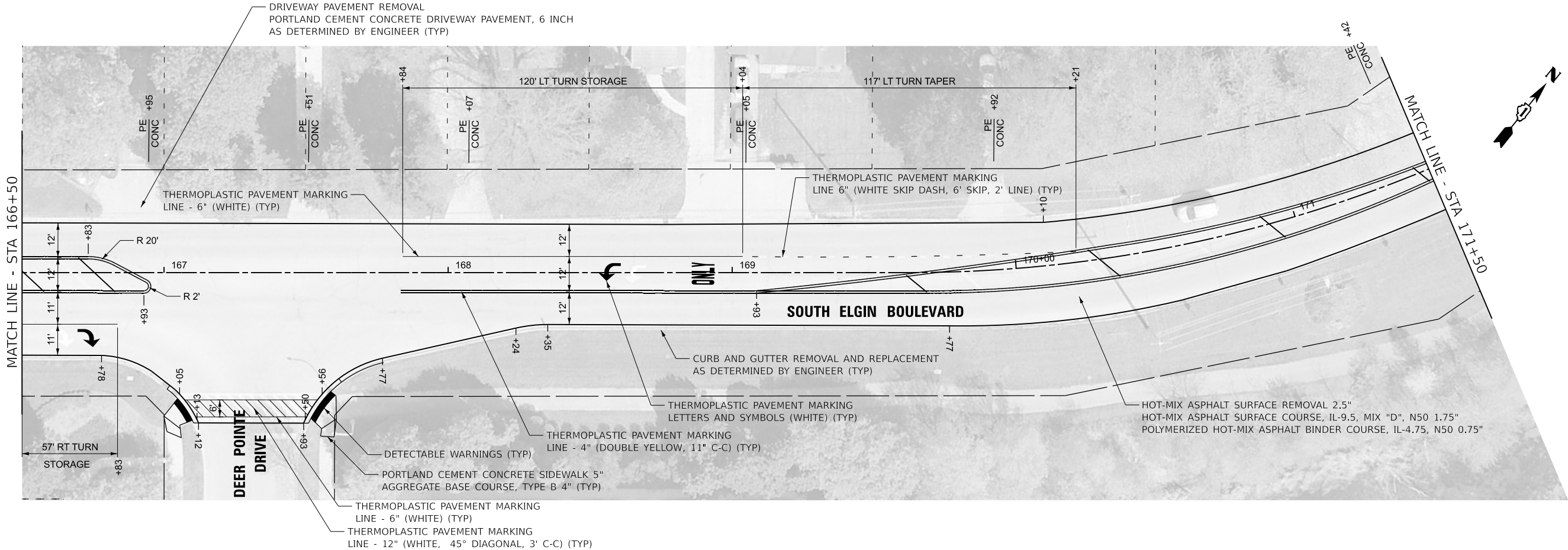
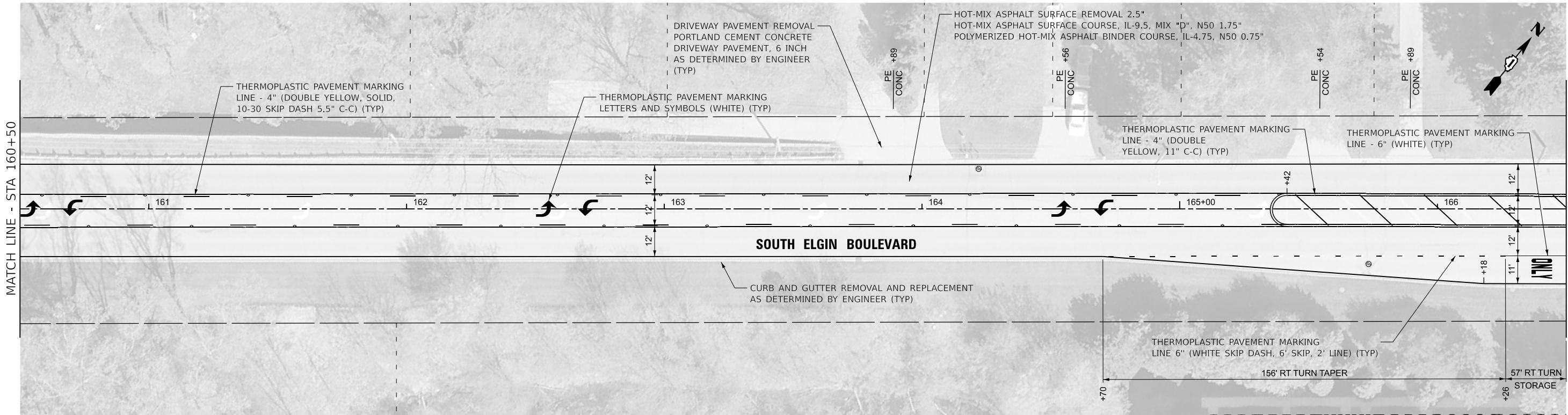
FILE	- 222414_SHT-Plan6.dgn
------	------------------------

STATE OF ILLINOIS
DEPARTMENT OF TRANSPORTATION

ROADWAY PLAN
SOUTH ELGIN BOULEVARD

SCALE: 1" = 20' SHEET 6 OF 7 SHEETS STA. 160+50 TO STA. 171+50

F.A.U. RTE.	SECTION	COUNTY	TOTAL SHEETS	SHEET NO.
2517	24-00060-00-R5	KANE	25	14
CONTRACT NO. 61L60				
ILLINOIS FED. AID PROJECT 277K(198)				



STATE OF ILLINOIS - PROFESSIONAL DESIGN FIRM
LICENSE NO. - 184-001121 - EXPIRES 4/30/2025
\$PLOTEDBY\$ 4/1/2025 8:55:08 AM
\$FILES\$
FILE NAME: P:\SELG022414\SELgin Blvd STP Imp\CADD\Sheets\Phase 2\222414_SHT-Plan7.dgn



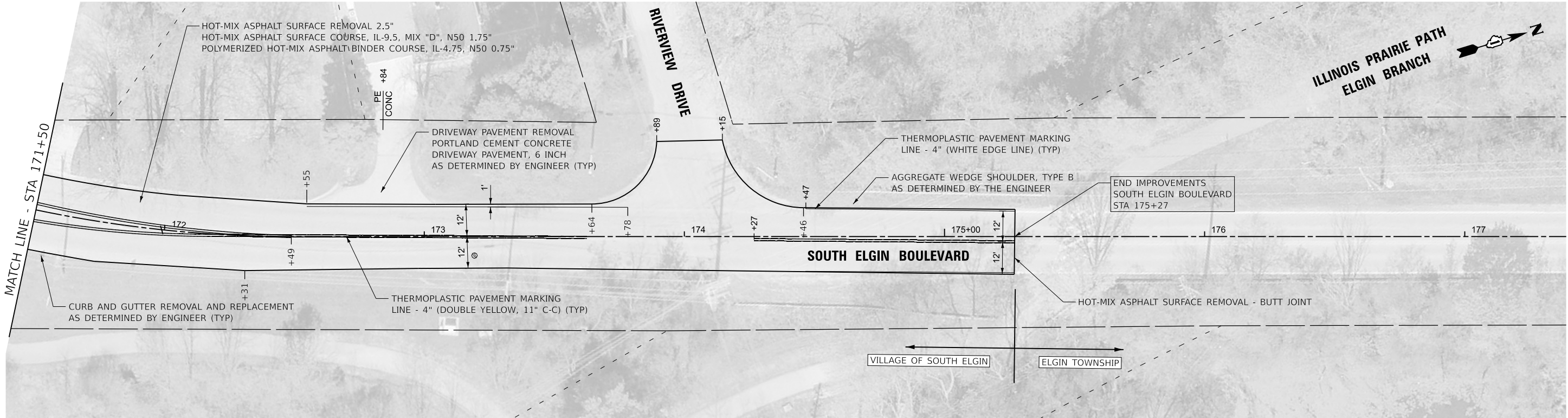
USER NAME	= jmillier	DESIGNED - JDM	REVISED -
		DRAWN - MVV	REVISED -
PLOT SCALE	= \$SCALE\$	CHECKED - JCC	REVISED -
PLOT DATE	= 4/1/2025	DATE - 4/1/2025	FILE - 222414_SHT-Plan7.dgn

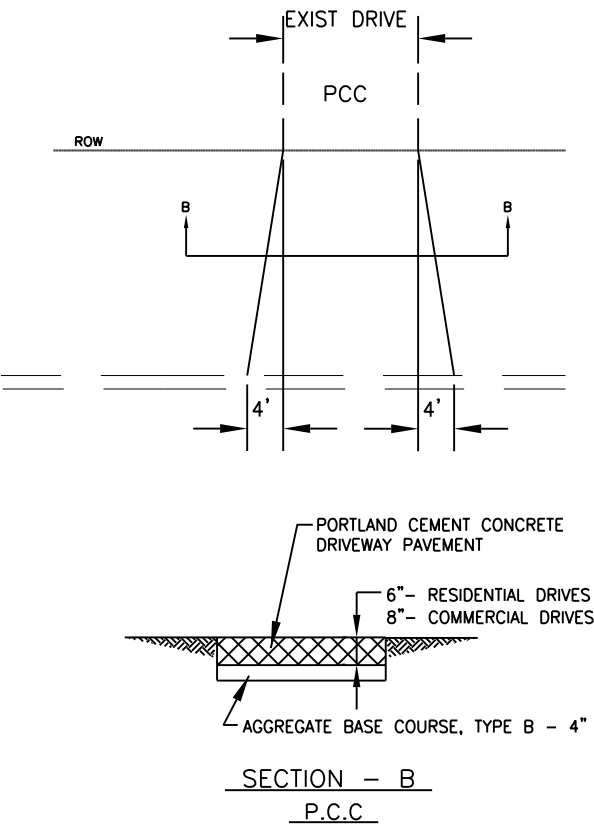
STATE OF ILLINOIS
DEPARTMENT OF TRANSPORTATION

ROADWAY PLAN
SOUTH ELGIN BOULEVARD

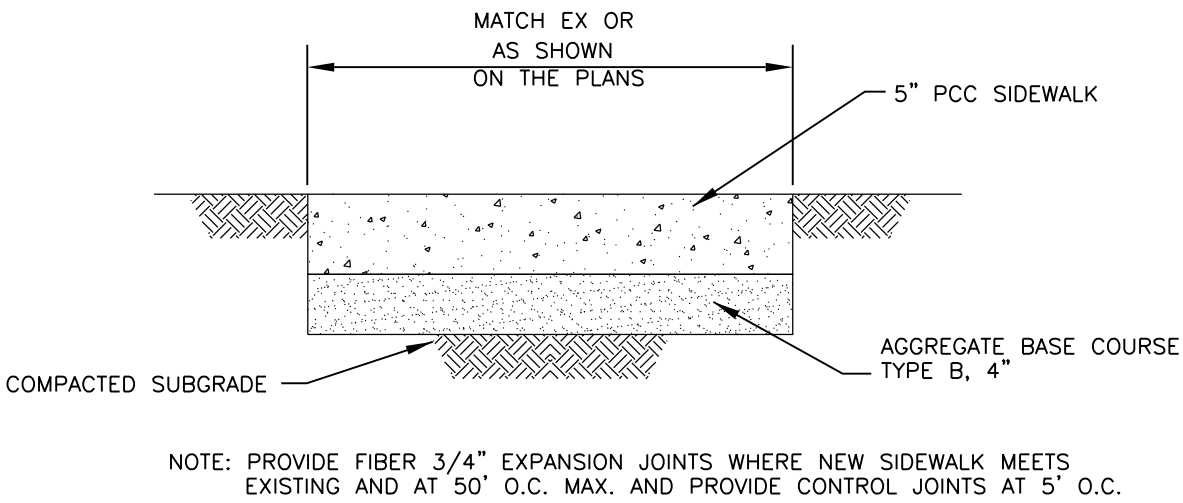
SCALE: 1" = 20' SHEET 7 OF 7 SHEETS STA. 171+50 TO STA. 175+27

F.A.U. RTE.	SECTION	COUNTY	TOTAL SHEETS	SHEET NO.
2517	24-00060-00-R5	KANE	25	15
CONTRACT NO. 61L60				
ILLINOIS FED. AID PROJECT 277K(198)				

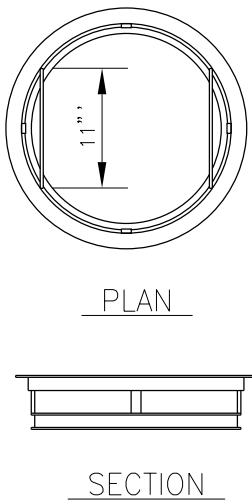




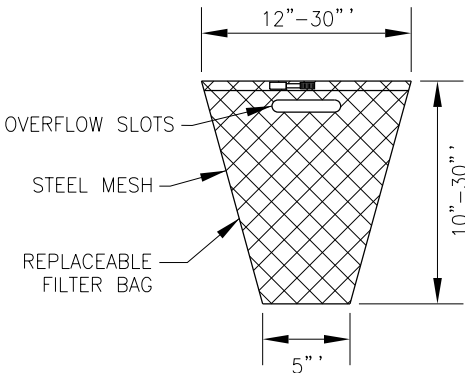
DRIVEWAY PAVEMENT DETAIL
NO SCALE



PORTLAND CEMENT CONCRETE (P.C.C.) SIDEWALK, 5-INCH
NO SCALE



INLET FILTER
NO SCALE



GENERAL NOTES:
FRAME: TOP RING CONSTRUCTED FROM 1 1/4" x 1 1/4" x 1/8" ANGLE.
BASE RING CONSTRUCTED OF 1 1/2" x 1/2" x 1/8" CHANNEL.
HANDLES & SUSPENSION BRACKETS CONSTRUCTED FROM 1/4" x 1 1/4" FLAT. ALL STEEL CONFORMING TO ASTM-A36.

REPLACEABLE BAG: CONSTRUCTED FROM 4 OZ./SQ. YD. NON-WOVEN POLYPROPYLENE GEOTEXTILE REINFORCED WITH POLYESTER MESH. CONNECTED TO BASE RING WITH STAINLESS STEEL STRAP & LOCK.

STEEL MESH: REMOVABLE STAINLESS STEEL MESH STRAINER BASKET. 1/4" DIA. HOLE SIZE, 58% OPEN AREA.

STATE OF ILLINOIS - PROFESSIONAL DESIGN FIRM
LICENSE NO. - 184-001121 - EXPIRES 4/30/2025
\$PLOTDRVA\$
\$PENTBLAS\$
\$FILES\$
FILE NAME: P:\SELG\222414-SEIgin Blvd STP Imp\CADD\Sheets\Phase 2\222414_SHT-MiscDetails.dgn

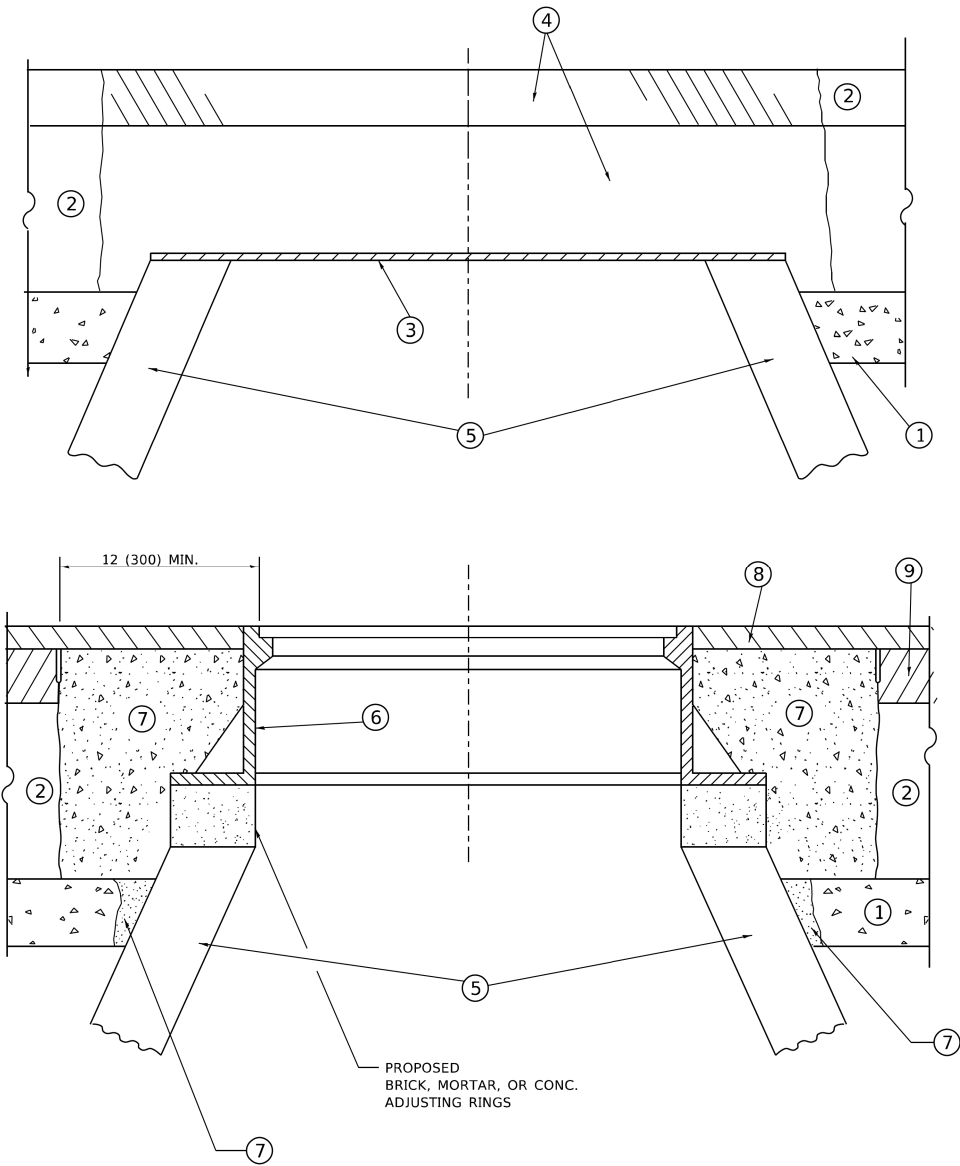


USER NAME = jmillr	DESIGNED - JDM	REVISED -
DRAWN - MVV	REVIS	
PLOT SCALE = \$SCALE\$	CHECKED - JCC	REVISED -
PLOT DATE = 4/1/2025	DATE - 4/1/2025	FILE - 222414_SHT-MiscDetails.dgn

STATE OF ILLINOIS
DEPARTMENT OF TRANSPORTATION

MISCELLANEOUS DETAILS			
SCALE: NTS	SHEET 1 OF 1 SHEETS	STA.	TO STA.

F.A.U. RTE.	SECTION	COUNTY	TOTAL SHEETS	SHEET NO.
2517	24-00060-00-R5	KANE	25	16
CONTRACT NO. 61L60				
ILLINOIS FED. AID PROJECT 277K(198)				



**DETAILS FOR FRAMES AND LIDS ADJUSTMENT
WITH MILLING**

NOTES

- EXISTING BROKEN FRAMES AND LIDS SHALL BE REMOVED AND DISPOSED OF BY THE CONTRACTOR AND SHALL BE REPLACED AS DIRECTED BY THE ENGINEER. REPLACEMENT FRAMES AND LIDS WILL BE PAID FOR IN ACCORDANCE WITH ARTICLE 109.04 OF THE STANDARD SPECIFICATIONS UNLESS A SEPARATE PAY ITEM HAS BEEN PROVIDED.
- IF THE EXISTING LIDS ARE OPEN, THE FRAME WILL BE ADJUSTED TO THE ELEVATION OF THE MILLED PAVEMENT SURFACE PRIOR TO THE MILLING OPERATION. THE FRAME WILL NOT BE REMOVED AND COVERED BY THE METAL PLATE.
- CITY OF CHICAGO CASTINGS ARE THE PROPERTY OF THE CITY AND THE CONTRACTOR SHALL NOTIFY THE CITY FOR REMOVAL AND DISPOSITION OF THE CASTINGS.
- THE METAL PLATE USED TO COVER THE STRUCTURE SHALL REMAIN THE PROPERTY OF THE CONTRACTOR.
- THE CONTRACTOR SHALL REMOVE ALL TRAFFIC CONTROL DEVICES BY THE END OF EACH WORK SHIFT.

CONSTRUCTION PROCEDURES

STAGE 1 (BEFORE PAVEMENT MILLING)

- REMOVE A MINIMUM OF 12 (300) OF THE PAVEMENT FROM AROUND THE STRUCTURE.
- REMOVE THE EXISTING FRAME AND LID FROM THE STRUCTURE.
- COVER THE STRUCTURE OPENING WITH A 36 (900) DIAMETER METAL PLATE.
- BACKFILL WITH CRUSHED STONE AND HMA SURFACE MIX APPROVED BY THE ENGINEER. (MIN. 3 (80) HMA TO REMAIN AFTER MILLING).

STAGE 2 (AFTER PAVEMENT MILLING)

- REMOVE THE HMA SURFACE MIX AND CRUSHED STONE.
- INSTALL THE FRAME AND LID; ADJUST THE FRAME TO ITS FINAL SURFACE ELEVATION.
- THE SURROUNDING SPACE SHALL BE FILLED WITH CLASS PP-2* CONCRETE TO THE ELEVATION OF THE SURFACE OF THE EXISTING BASE COURSE OR THE BINDER COURSE.

* UNLESS OTHERWISE SPECIFIED IN THE PLANS.

THE PROCEDURE EXPLAINED ABOVE SHALL CONFORM TO THE APPLICABLE PORTIONS OF SECTIONS 353, 406, 602, AND 603 OF THE STANDARD SPECIFICATIONS EXCEPT THAT "THE CONTRACTOR SHALL ADJUST THE STRUCTURES TO THE FINISHED PAVEMENT ELEVATION NO MORE THAN 5 CALENDAR DAYS PRIOR TO PLACEMENT OF THE FINAL LIFT OF SURFACE UNLESS APPROVED BY THE ENGINEER."

LEGEND

- | | |
|--|-------------------------------|
| ① SUB-BASE GRANULAR MATERIAL | ⑥ FRAME AND LID (SEE NOTES) |
| ② EXISTING PAVEMENT | ⑦ CLASS PP-2* CONCRETE |
| ③ 36 (900) DIAMETER METAL PLATE | ⑧ PROPOSED HMA SURFACE COURSE |
| ④ PROPOSED CRUSHED STONE AND HMA SURFACE MIX | ⑨ PROPOSED HMA BINDER COURSE |
| ⑤ EXISTING STRUCTURE | |

LOCATION OF STRUCTURES

THE CONTRACTOR WILL BE REQUIRED TO KEEP A RECORD OF THE LOCATIONS OF THE BURIED STRUCTURES ACCORDING TO THE STATION AND DISTANCE LEFT OR RIGHT OF THE CENTERLINE OF PAVEMENT. UPON COMPLETION OF THE WORK, THE CONTRACTOR WILL DELIVER THE RECORD TO THE ENGINEER.

BASIS OF PAYMENT

- REMOVING FRAMES AND LIDS ON DRAINAGE AND UTILITY STRUCTURES IN THE PAVEMENT PRIOR TO MILLING, AND ADJUSTING TO FINAL GRADE PRIOR TO PLACING THE SURFACE COURSE, WILL BE PAID FOR AT THE CONTRACT UNIT PRICE EACH FOR "FRAMES AND LIDS TO BE ADJUSTED (SPECIAL)."
- THIS WORK WILL NOT BE PAID FOR WHEN DRAINAGE AND UTILITY STRUCTURES ARE SPECIFIED FOR PAYMENT AS STRUCTURE RECONSTRUCTION.
- NEW FRAMES AND LIDS, WHEN SPECIFIED, WILL BE PAID FOR SEPARATELY.
- WHEN STRUCTURES ARE TO BE ADJUSTED OR RECONSTRUCTED, THE LOWERING AND RAISING OF THE FRAMES AND LIDS WILL NOT BE PAID FOR SEPARATELY BUT WILL BE INCLUDED IN THE COST OF THE CORRESPONDING PAY ITEM.

ALL DIMENSIONS ARE IN INCHES (MILLIMETERS) UNLESS OTHERWISE SHOWN

MODEL Default
FILE Name: W:\Bids\td22-23\bd08.dgn

USER NAME = Lawrence,DeManche	DESIGNED - R. SHAH	REVISED - R. BORO 03-09-11
	DRAWN -	REVISED - R. BORO 12-06-11
PLOT SCALE = 100.0000' / in.	CHECKED -	REVISED - K. SMITH 11-18-22
PLOT DATE = 9/15/2023	DATE - 10-25-94	REVISED - K. SMITH 09-15-23

**STATE OF ILLINOIS
DEPARTMENT OF TRANSPORTATION**

**DETAILS FOR
FRAMES AND LIDS ADJUSTMENT WITH MILLING**

SCALE: NONE SHEET 1 OF 1 SHEETS STA. TO STA.

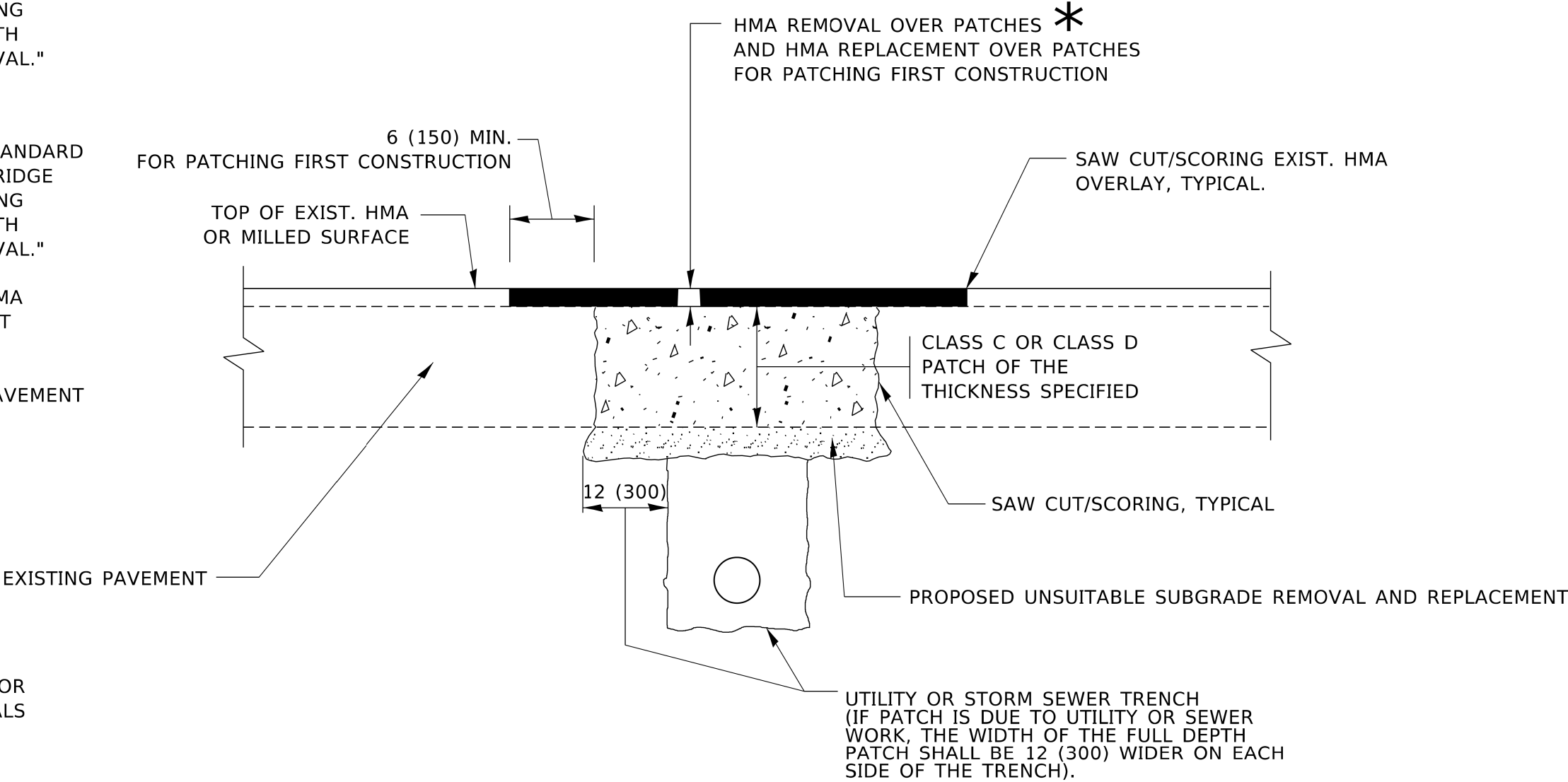
F.A. RTE.	SECTION	COUNTY	TOTAL SHEETS	SHEET NO.
2517	24-00060-00-R5	KANE	25	17
BD600-03 (BD-08)		CONTRACT NO. 61L60		
ILLINOIS		FED. AID PROJECT 277K(198)		

METHOD OF MEASUREMENT

REFER TO SECTION 442 OF THE STANDARD SPECIFICATIONS FOR ROAD AND BRIDGE CONSTRUCTION AND THE RECURRING SPECIAL PROVISION "PATCHING WITH HOT-MIX ASPHALT OVERLAY REMOVAL."

BASIS OF PAYMENT

- 1. REFER TO SECTION 442 OF THE STANDARD SPECIFICATIONS FOR ROAD AND BRIDGE CONSTRUCTION AND THE RECURRING SPECIAL PROVISION "PATCHING WITH HOT-MIX ASPHALT OVERLAY REMOVAL."
- 2. SAW CUT/SCORING OF EXISTING HMA OVERLAY IS INCLUDED IN THE COST OF PAVEMENT PATCHING.
- 3. SAW CUT/SCORING OF EXISTING PAVEMENT IS INCLUDED IN THE COST OF PAVEMENT PATCHING.



SEQUENCE OF CONSTRUCTION (PATCHING FIRST)

- 1. REMOVE THE EXISTING HMA MATERIAL OVER THE AREA TO BE PATCHED.
- 2. REMOVE AND REPLACE WITH CLASS C OR D PATCH.
- 3. REPLACE HMA MATERIAL OVER THE AREA TO BE PATCHED.

SEQUENCE OF CONSTRUCTION (MILLING FIRST)

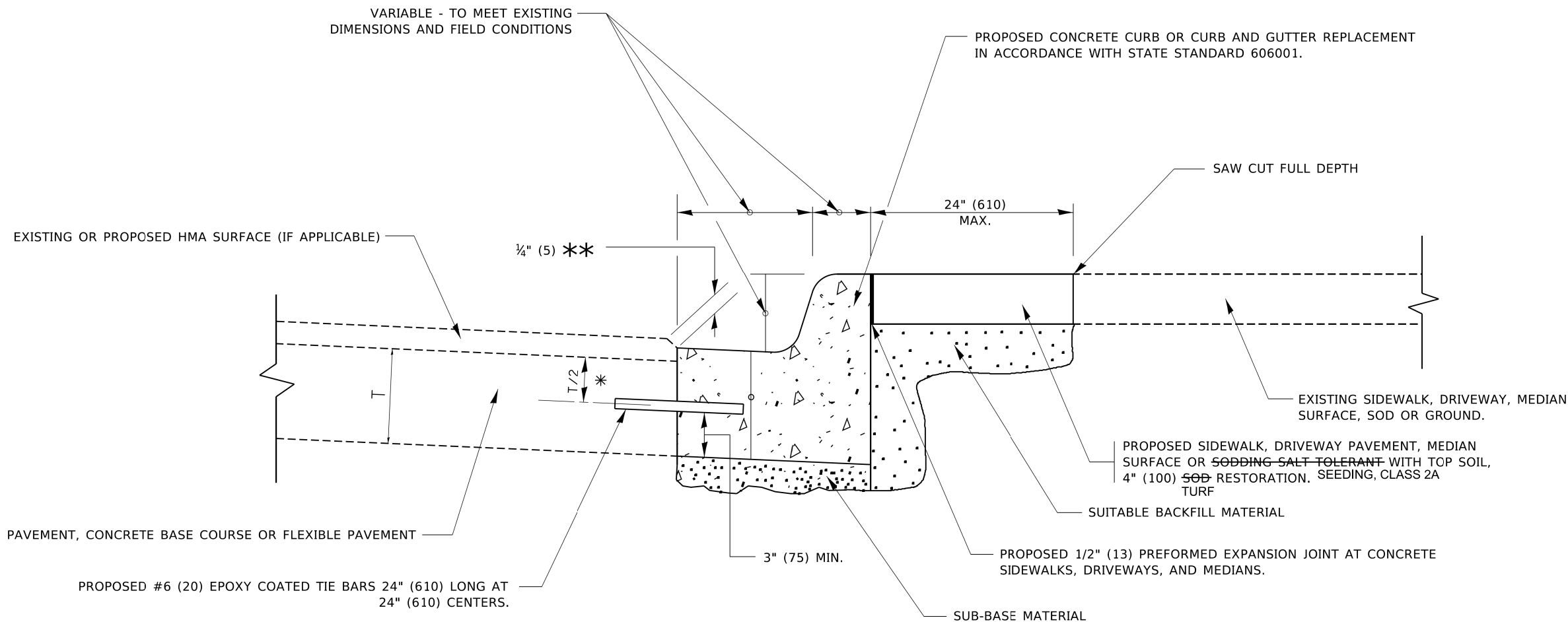
- 1. MILL HMA FIRST IF THERE IS AT LEAST 4½ INCHES OR MORE OF HMA MATERIAL ON TOP OF THE EXISTING PAVEMENT OR IF THE PAVEMENT IS FULL DEPTH HMA. A MINIMUM OF 2 INCHES OF HMA MATERIAL SHALL BE IN PLACE AFTER MILLING.
- 2. REMOVE AND REPLACE WITH FULL DEPTH CLASS D PATCHES TO TOP OF MILLED SURFACE.

ALL DIMENSIONS ARE IN INCHES (MILLIMETERS) UNLESS OTHERWISE SHOWN.

MODEL: Default
FILE: \\wille-pw-bentley.com\PI\DOT\Documents\DOT_Offices\District_1\Projects\Dis4273\ACAD\Draws\CAD\Draws\lv22.dgn

	USER NAME = Lawrence,DeManche	DESIGNED - R. SHAH	REVISED - R. BORO 01-01-07	STATE OF ILLINOIS DEPARTMENT OF TRANSPORTATION	PAVEMENT PATCHING FOR HMA SURFACED PAVEMENT				F.A. RTE.	SECTION	COUNTY	TOTAL SHEETS	SHEET NO.
		DRAWN -	REVISED - R. BORO 09-04-07						2517	24-00060-00-RS	KANE	25	18
	PLOT SCALE = 100.0000 ' / in.	CHECKED -	REVISED - K. ENG 10-27-08		BD400-04 (BD-22)		CONTRACT NO. 61L60						
	PLOT DATE = 11/18/2022	DATE - 10-25-94	REVISED - K. SMITH 11-18-22		ILLINOIS FED. AID PROJECT 277K(198)								
					SCALE: NONE	SHEET 1 OF 1 SHEETS	STA.	TO STA.					

MODEL: Default
FILE: Model - Pavement.dgn
C:\Users\paveman\OneDrive\Documents\DOT - Office\District 1\Projects\Dist5\22-24\CAD\Drawn\CA\Sheets\bd24.dgn



- * 3" (75) MINIMUM FROM TOP AND BOTTOM OF THE CONCRETE PAVEMENT OR BASE COURSE.
- ** IF THE FINAL SURFACE OF THE PAVEMENT IS CONCRETE, THE GUTTER IS TO BE FLUSH WITH THE PAVEMENT.

CURB OR CURB AND GUTTER REMOVAL AND REPLACEMENT

ALL DIMENSIONS ARE IN INCHES (MILLIMETERS)
UNLESS OTHERWISE SHOWN.

	USER NAME = footemj	DESIGNED - A. HOUSEH	REVISED - A. ABBAS 03-21-97	STATE OF ILLINOIS DEPARTMENT OF TRANSPORTATION	CURB OR CURB AND GUTTER REMOVAL AND REPLACEMENT			F.A. RTE.	SECTION	COUNTY	TOTAL SHEETS	SHEET NO.
		DRAWN -	REVISED - M. GOMEZ 01-22-01					2517	24-00060-00-R5	KANE	25	19
	PLOT SCALE = 50.0000 ' / in.	CHECKED -	REVISED - R. BORO 12-15-09		BD600-06 (BD-24)			CONTRACT NO. 61L60				
	PLOT DATE = 7/11/2019	DATE - 03-11-94	REVISED - K. SMITH 07-11-19		SCALE: NONE	SHEET 1	OF 1 SHEETS	STA.	TO STA.	ILLINOIS	FED. AID PROJECT	277K(198)

MODEL: Default
FILE: \\ntie-pw\illnet-pw\entier.com\PI\DOT\Documents\DOT_Offices\District_1\Projects\Dis42723a\CADD\Data\CAD\Sheet\TC10.dgn

USER NAME = Lawrence,DeManche	DESIGNED - L.H.A.	REVISED - T. RAMMACHER 01-06-00
	DRAWN -	REVISED - A. SCHUETZE 07-01-13
PLOT SCALE = 100.0000' / in.	CHECKED -	REVISED - A. SCHUETZE 09-15-16
PLOT DATE = 5/3/2024	DATE - 06-89	REVISED - D. SENDERAK 05-03-24

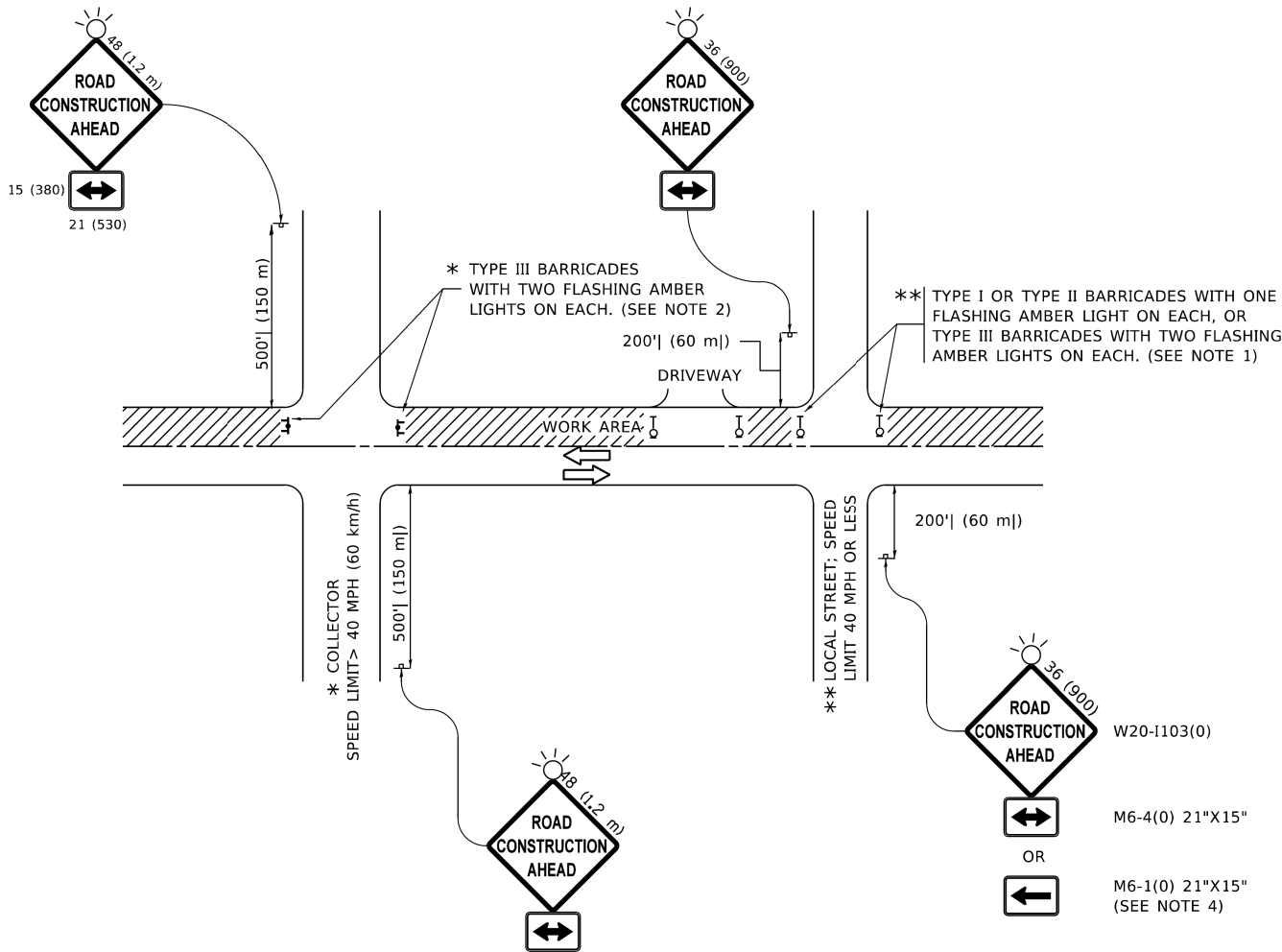
STATE OF ILLINOIS
DEPARTMENT OF TRANSPORTATION

TRAFFIC CONTROL AND PROTECTION FOR
SIDE ROADS, INTERSECTIONS, AND DRIVEWAYS

SCALE: NONE SHEET 1 OF 1 SHEETS STA. TO STA.

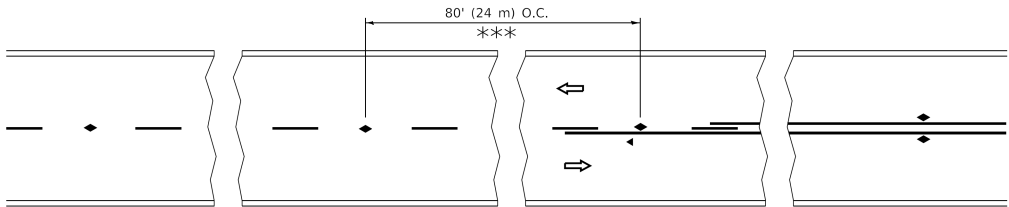
All dimensions are in inches (millimeters)
unless otherwise shown.

F.A. RTE.	SECTION	COUNTY	TOTAL SHEETS	SHEET NO.
2517	24-00060-00-R5	KANE	25	21
TC-10		CONTRACT NO. 61L60		
		ILLINOIS	FED. AID PROJECT	277K(198)



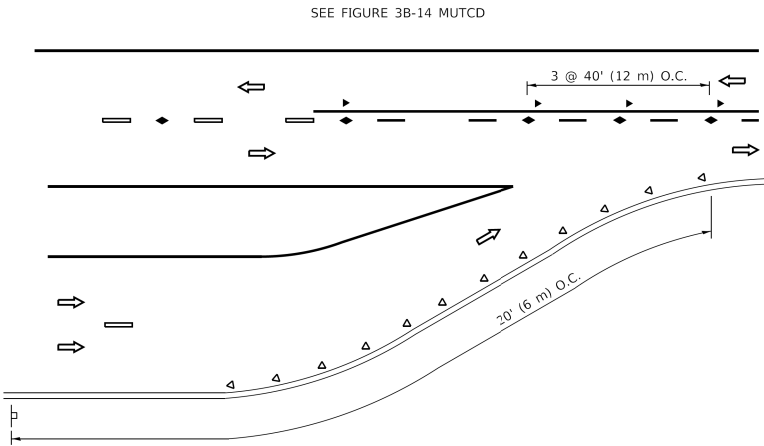
NOTES:

- SIDE ROAD WITH A SPEED LIMIT OF 40 MPH (60 km/h) OR LESS AS SHOWN ON THE DRAWING AND AS DIRECTED BY THE ENGINEER:
 - ONE "ROAD CONSTRUCTION AHEAD" SIGN 36 x 36 (900x900) WITH A FLASHER MOUNTED ON IT APPROXIMATELY 200' (60 m) IN ADVANCE OF THE MAIN ROUTE.
 - THE CLOSED PORTION OF THE MAIN ROUTE SHALL BE PROTECTED BY BLOCKING WITH TYPE I, TYPE II OR TYPE III BARRICADES, 1/3 OF THE CROSS SECTION OF THE CLOSED PORTION.
- SIDE ROAD WITH A SPEED LIMIT GREATER THAN 40 MPH (60 km/h) AS SHOWN ON THE DRAWING AND AS DIRECTED BY THE ENGINEER:
 - ONE "ROAD CONSTRUCTION AHEAD" SIGN 48 x 48 (1.2 m x 1.2 m) WITH A FLASHER MOUNTED ON IT APPROXIMATELY 500' (150 m) IN ADVANCE OF THE MAIN ROUTE.
 - THE CLOSED PORTION OF THE MAIN ROUTE SHALL BE PROTECTED BY BLOCKING WITH TYPE III BARRICADES, 1/2 OF THE CROSS SECTION OF THE CLOSED PORTION.
- CONES MAY BE SUBSTITUTED FOR BARRICADES OR DRUMS AT HALF THE SPACING DURING DAY OPERATIONS. CONES SHALL BE A MINIMUM OF 28 (710) IN HEIGHT.
- WHEN THE SIDE ROAD LIES BETWEEN THE BEGINNING OF THE MAINLINE
- SIGNING AND THE WORK ZONE, A SINGLE HEADED ARROW (M6-1) SHALL BE USED IN LIEU OF THE DOUBLE HEADED ARROW (M6-4).
- WHEN WORK IS BEING PERFORMED ON A SIDE ROAD OR DRIVEWAY, FOLLOW THE APPLICABLE STANDARD(S). THE DIRECTIONAL ARROW (M6-1 OR M6-4) SHALL BE COVERED OR REMOVED WHEN NO LONGER CONSISTENT WITH THE TRAFFIC CONTROL SET-UP.
- ADVANCE WARNING SIGNS ARE TO BE OMITTED ON DRIVEWAYS UNLESS OTHERWISE SPECIFIED IN THE PLANS OR BY THE ENGINEER.
- THE TRAFFIC CONTROL AND PROTECTION FOR SIDE ROADS, INTERSECTIONS, AND DRIVEWAYS SHALL BE INCLUDED IN THE COST OF SPECIFIED TRAFFIC CONTROL STANDARDS OR ITEMS.

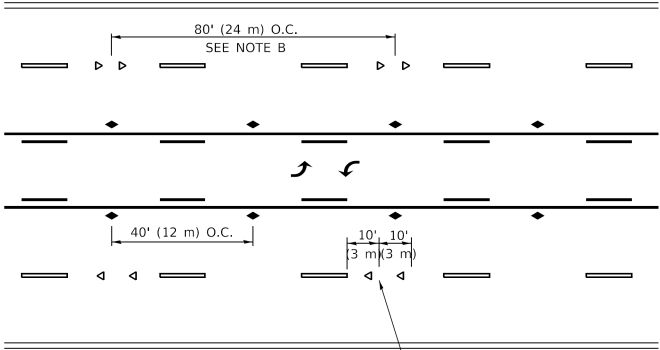


*** REDUCE TO 40' (12 m) O.C. ON CURVES WITH POSTED OR ADVISORY SPEED 45 M.P.H. (70 km/h) OR LESS.

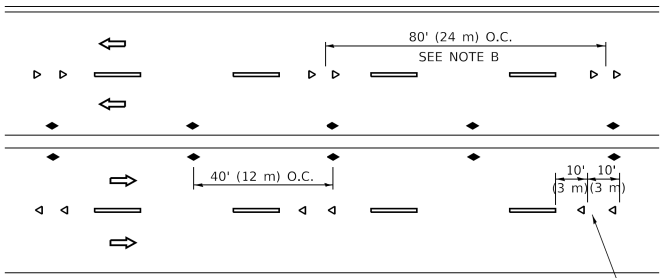
TWO-LANE/TWO-WAY



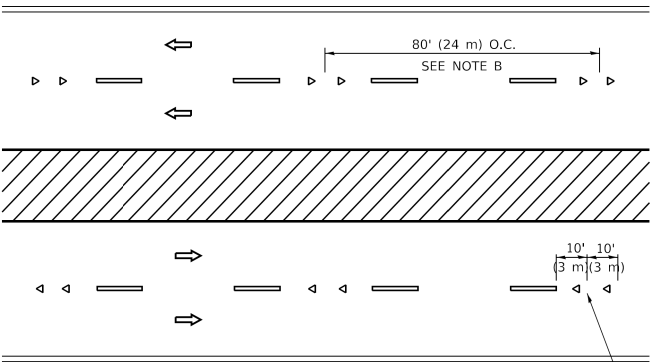
LANE REDUCTION TRANSITION



TWO-WAY LEFT TURN



MULTI-LANE/UNDIVIDED



MULTI-LANE/DIVIDED

GENERAL NOTES

- MARKERS USED WITH DASHED LINES SHALL BE CENTERED IN THE GAP BETWEEN SEGMENTS.
- MARKERS USED ADJACENT TO SOLID LINES SHALL BE OFFSET 2 TO 3 (50 TO 75) TOWARD TRAFFIC AS SHOWN.
- MARKERS THROUGH TANGENTS LESS THAN 500' (150 m) IN LENGTH BETWEEN CURVES SHALL BE INSTALLED AT THE LESSER OF THE TWO CURVE SPACINGS.
- MARKERS ARE TO BE USED ADJACENT TO BOTH SOLID WHITE LINES IN DUAL LEFT TURN LANES

LANE MARKER NOTES

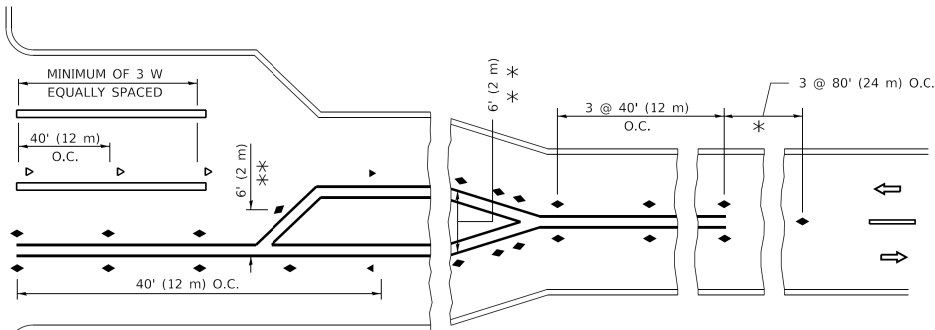
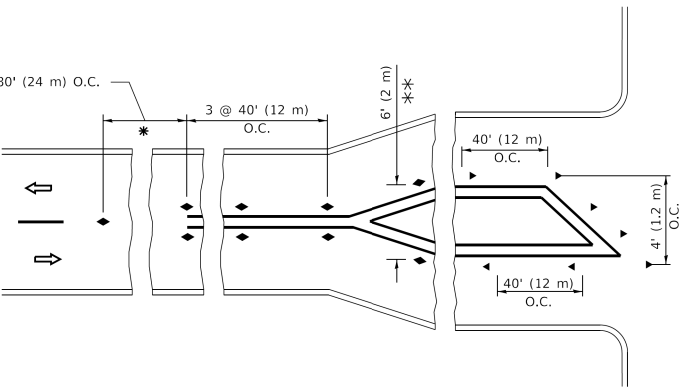
- A. USE DOUBLE LANE LINE MARKERS SPACED AS SHOWN.
- B. REDUCE TO 40' (12 m) O.C. ON CURVES WHERE ADVISORY SPEEDS ARE 10 M.P.H (20 km/h) LOWER THAN POSTED SPEEDS.

SYMBOLS

- YELLOW STRIPE
- WHITE STRIPE
- ONE-WAY AMBER MARKER
- ONE-WAY CRYSTAL MARKER (W/O)
- TWO-WAY AMBER MARKER

DESIGN NOTES

- DOUBLE LANE LINE MARKERS SHALL BE USED UNLESS SPECIFIED OTHERWISE.
- EXCEPT AS SHOWN ON THE LANE REDUCTION TRANSITION AND FREEWAY EXIT RAMP DETAIL, MARKERS ARE NOT TO BE SPECIFIED ON RIGHT EDGE LINES.
- THE EXACT MARKER LIMITS, SPACING, AND COLOR SHALL BE INCLUDED IN THE PLANS WHEN STANDARD SPECIFICATIONS ARE NOT BEING USED.
- MARKERS SHOULD NOT BE USED ALONGSIDE CURBS EXCEPT FOR EXTREMELY SHORT SECTIONS OF CURBS WHERE NOT MORE THAN TWO MARKERS WOULD BE INVOLVED.



* SEE TWO-LANE/TWO-WAY WHERE MARKERS CONTINUE
** WHERE THE MEDIAN WIDTH IS 6' (2 m) OR LESS USE TWO-WAY MARKERS.

TURN LANES

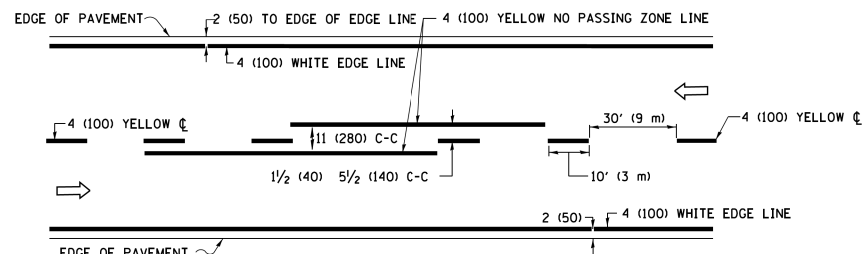
All dimensions are in inches (millimeters) unless otherwise shown.

STATE OF ILLINOIS
DEPARTMENT OF TRANSPORTATION

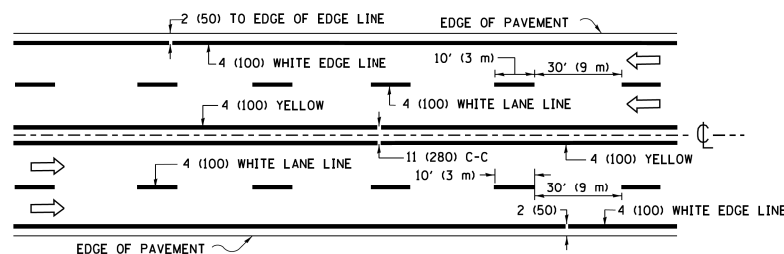
TYPICAL APPLICATIONS
RAISED REFLECTIVE PAVEMENT MARKERS (SNOW-PLOW RESISTANT)

F.A. RTE.	SECTION	COUNTY	TOTAL SHEETS	SHEET NO.
2517	24-00060-00-RS	KANE	25	22
TC-11		CONTRACT NO. 61L60		
		ILLINOIS	FED. AID PROJECT	277K(198)

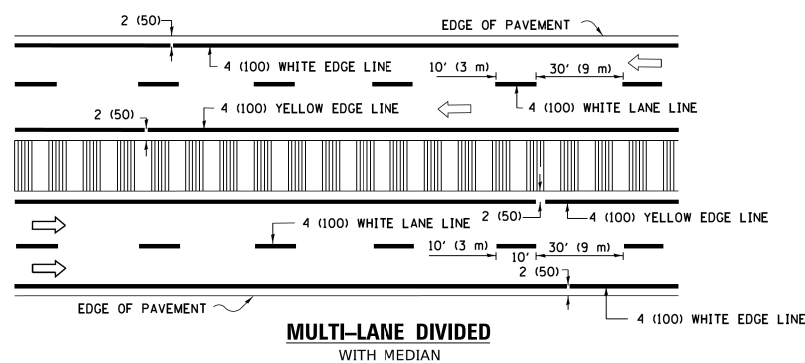
SCALE: NONE SHEET 1 OF 1 SHEETS STA. TO STA.



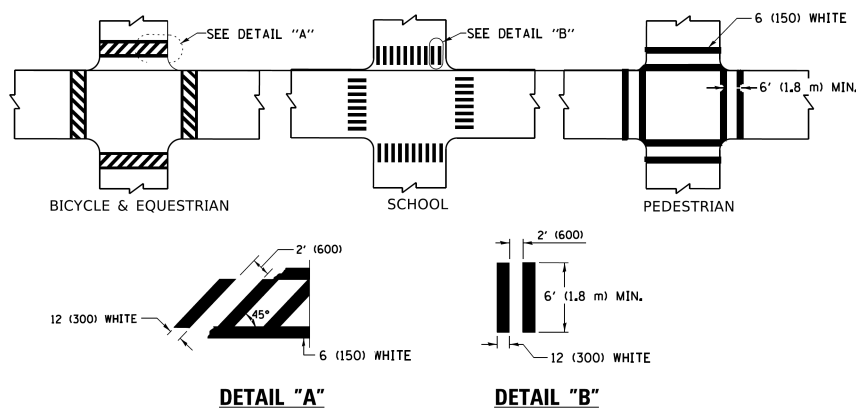
2-LANE ROADWAY



MULTI-LANE UNDIVIDED

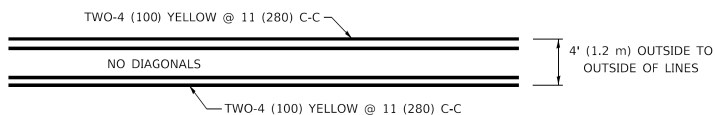


TYPICAL LANE AND EDGE LINE MARKING

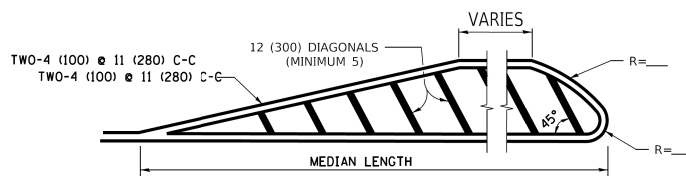


TYPICAL CROSSWALK MARKING

* MARKINGS SHALL BE INSTALLED PARALLEL TO THE CENTERLINE OF THE ROAD WHICH IT CROSSES



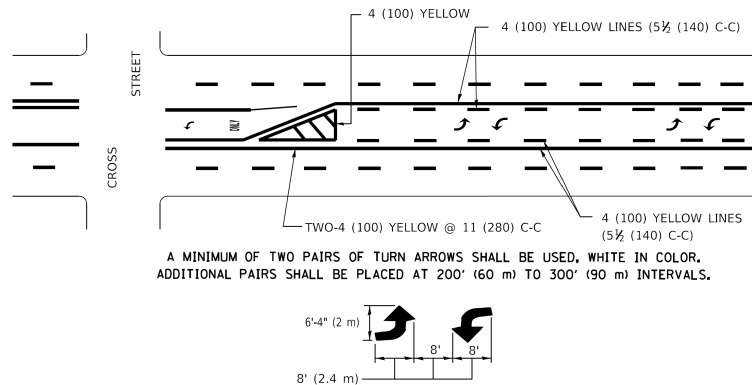
4' (1.2 m) WIDE MEDIANS ONLY



FOR MEDIAN LENGTHS WHERE DIAGONAL SPACING CANNOT BE ATTAINED, USE 5 (FIVE) EQUALLY SPACED DIAGONAL LINES.

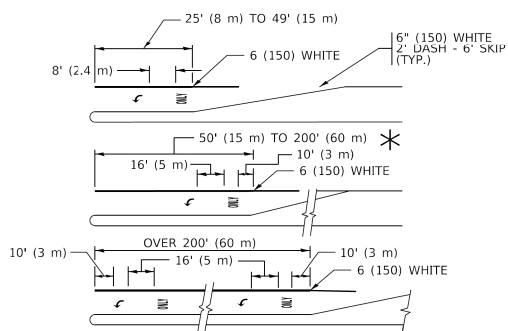
DIAGONAL LINE SPACING: 50' (15 m) C-C (LESS THAN 30MPH (50 km/h))
75' (25 m) C-C 30MPH (50 km/h) TO 45MPH (70 km/h))
150' (45 m) C-C (MORE THAN 45MPH (70 km/h))

MEDIANS OVER 4' (1.2 m) WIDE



MEDIAN WITH TWO-WAY LEFT TURN LANE

TYPICAL PAINTED MEDIAN MARKING

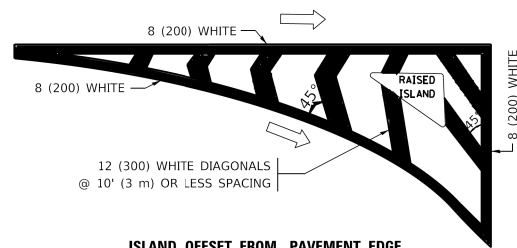


FULL SIZE LETTERS 8' (2.4 m) AND ARROWS SHALL BE USED.

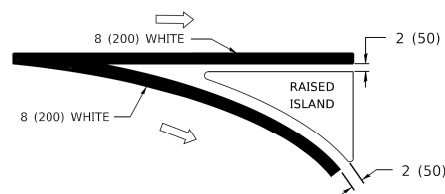
* TURN LANES IN EXCESS OF 400' (120 m) IN LENGTH MAY HAVE AN ADDITIONAL SET OF ARROW - "ONLY" INSTALLED MIDWAY BETWEEN THE OTHER TWO SETS OF ARROW - "ONLY".

TYPICAL LEFT (OR RIGHT) TURN LANE

TYPICAL TURN LANE MARKING

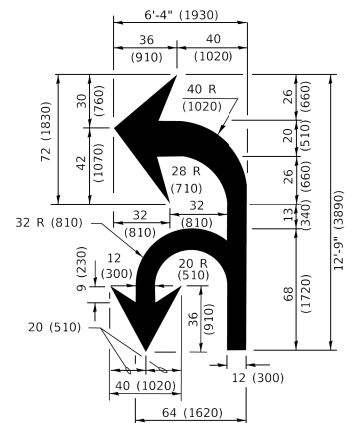


ISLAND OFFSET FROM PAVEMENT EDGE

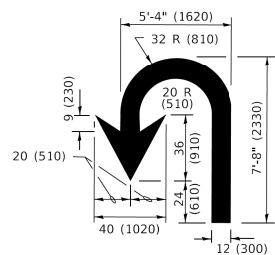


ISLAND AT PAVEMENT EDGE

TYPICAL ISLAND MARKING



COMBINATION LEFT AND U-TURN



U-TURN

LANE REDUCTION TRANSITION

* LANE REDUCTION ARROWS REQUIRED AT SPEEDS OF 45 MPH OR GREATER OR WHEN SPECIFIED IN PLANS.

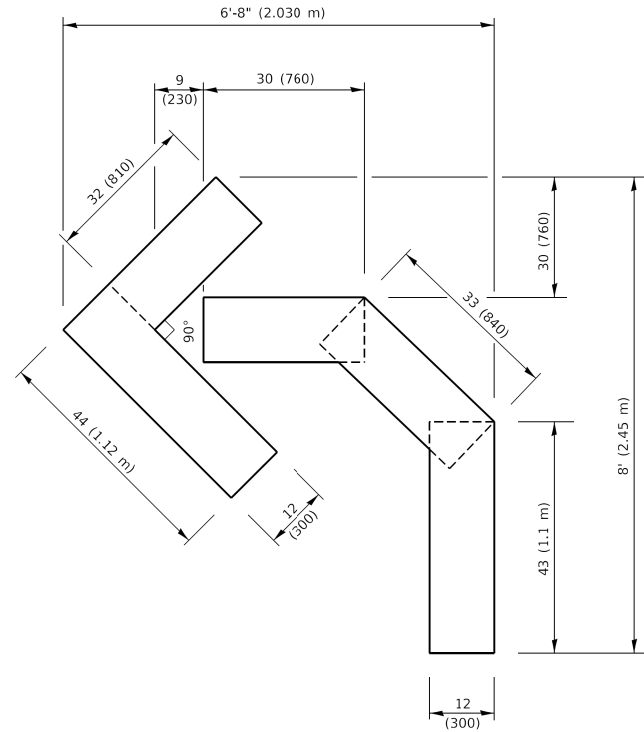
D(FT)	SPEED LIMIT
345	30
425	35
500	40
580	45
665	50
750	55

TYPE OF MARKING	WIDTH OF LINE	PATTERN	COLOR	SPACING / REMARKS
CENTERLINE ON 2 LANE PAVEMENT	4 (100)	SKIP-DASH	YELLOW	10' (3 m) LINE WITH 30' (9 m) SPACE
CENTERLINE ON MULTI-LANE UNDIVIDED PAVEMENT	2 @ 4 (100)	SOLID	YELLOW	11 (280) C-C
NO PASSING ZONE LINES: FOR ONE DIRECTION FOR BOTH DIRECTIONS	4 (100) 2 @ 4 (100)	SOLID SOLID	YELLOW/ YELLOW	5½ (140) C-C FROM SKIP-DASH CENTERLINE 11 (280) C-C OMIT SKIP-DASH CENTERLINE BETWEEN
LANE LINES	4 (100) 5 (125) ON FREEWAYS	SKIP-DASH SKIP-DASH	WHITE WHITE	10' (3 m) LINE WITH 30' (9 m) SPACE
DOTTED LINES (EXTENSIONS OF CENTER, LANE OR TURN LANE MARKINGS)	SAME AS LINE BEING EXTENDED	SKIP-DASH	SAME AS LINE BEING EXTENDED	2' (600) LINE WITH 6' (1.8 m) SPACE
EDGE LINES	4 (100)	SOLID	YELLOW-LEFT WHITE-RIGHT	OUTLINE MEDIANS IN YELLOW
TURN LANE MARKINGS	6 (150) LINE; FULL SIZE LETTERS & SYMBOLS (8' (2.4m))	SOLID	WHITE	SEE TYPICAL TURN LANE MARKING DETAIL
TWO WAY LEFT TURN MARKING	2 @ 4 (100) EACH DIRECTION 8' (2.4m) LEFT ARROW	SKIP-DASH AND SOLID IN PAIRS	YELLOW WHITE	10' (3 m) LINE WITH 30' (9 m) SPACE FOR SKIP-DASH; 5½ (140) C-C BETWEEN SOLID LINE AND SKIP-DASH LINE SEE TYPICAL TWO-WAY LEFT TURN MARKING DETAIL
CROSSWALK LINES (PEDESTRIAN) A. DIAGONALS (BIKE & EQUESTRIAN) B. LONGITUDINAL BARS (SCHOOL)	2 @ 6 (150) 12 (300) @ 45° 12 (300) @ 90°	SOLID SOLID SOLID	WHITE WHITE WHITE	NOT LESS THAN 6' (1.8 m) APART 2' (600) APART 2' (600) APART SEE TYPICAL CROSSWALK MARKING DETAILS.
STOP LINES	24 (600)	SOLID	WHITE	PLACE 4' (1.2 m) IN ADVANCE OF AND PARALLEL TO CROSSWALK, IF PRESENT. OTHERWISE, PLACE AT DESIRED STOPPING POINT. PARALLEL TO CROSSROAD CENTERLINE, WHERE POSSIBLE
PAINTED MEDIANS	2 @ 4 (100) WITH 12 (300) DIAGONALS @ 45°; NO DIAGONALS USED FOR 4' (1.2 m) WIDE MEDIANS	SOLID	YELLOW: TWO WAY TRAFFIC WHITE: ONE WAY TRAFFIC	11 (280) C-C FOR THE DOUBLE LINE SEE TYPICAL PAINTED MEDIAN MARKING.
GORE MARKING AND CHANNELIZING LINES	8 (200) WITH 12 (300) DIAGONALS @ 45°	SOLID	WHITE	DIAGONALS: 15' (4.5 m) C-C (LESS THAN 30MPH (50 km/h)) 20' (6 m) C-C 30MPH (50 km/h) TO 45MPH (70 km/h)) 30' (9 m) C-C (OVER 45MPH (70 km/h))
RAILROAD CROSSING	24 (600) TRANSVERSE LINES; "RR" IS 6' (1.8 m) LETTERS; 16 (400) LINE FOR "X"	SOLID	WHITE	SEE STATE STANDARD 780001 AREA OF: "R"=3.6 SQ. FT. (0.33 m ²) EACH "X"=54.0 SQ. FT. (5.0 m ²)
SHOULDER DIAGONALS (REQUIRED FOR SHOULDERS > 8')	12 (300) @ 45°	SOLID	WHITE - RIGHT YELLOW - LEFT	50' (15 m) C-C (LESS THAN 30MPH (50 km/h)) 75' (25 m) C-C (30 MPH (50 km/h) TO 45MPH (70 km/h)) 150' (45 m) C-C (OVER 45MPH (70 km/h))
U TURN ARROW	SEE DETAIL	SOLID	WHITE	16.3 SF
2 ARROW COMBINATION LEFT AND U TURN	SEE DETAIL	SOLID	WHITE	30.4 SF

FOR FURTHER DETAILS ON PAVEMENT MARKING REFER TO
STANDARD SPECIFICATIONS FOR ROAD AND BRIDGE
CONSTRUCTION AND STATE STANDARD 780001.

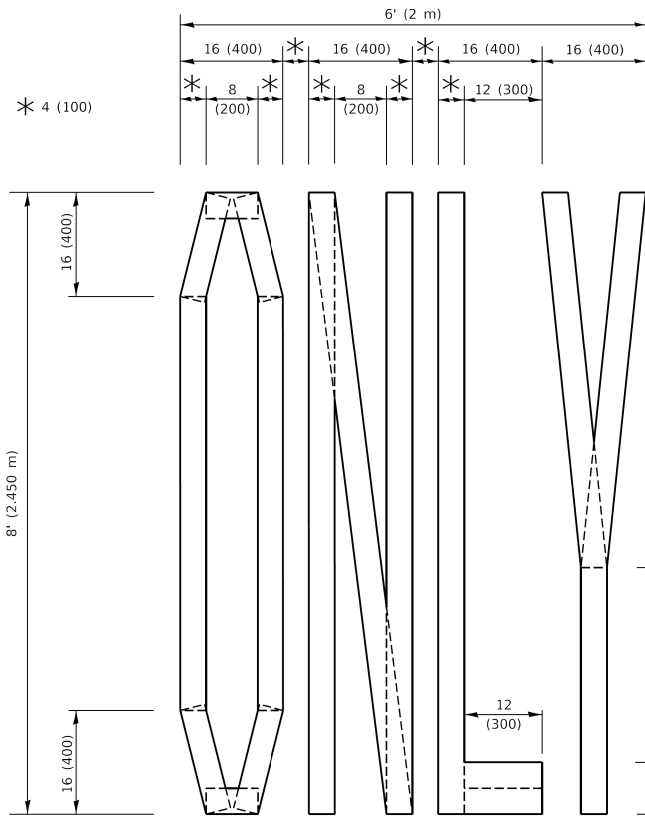
All dimensions are in inches (millimeters) unless otherwise shown.

	USER NAME = footemj	DESIGNED - EVERS	REVISED - C. JUCIUS 09-09-09	STATE OF ILLINOIS DEPARTMENT OF TRANSPORTATION	DISTRICT ONE TYPICAL PAVEMENT MARKINGS				F.A. RTE.	SECTION	COUNTY	TOTAL SHEETS	SHEET NO.
		DRAWN -	REVISED - C. JUCIUS 07-01-13						2517	24-00060-00-R5	KANE	25	23
	PLOT SCALE = 50.0000 ' / in.	CHECKED -	REVISED - C. JUCIUS 12-21-15		TC-13 CONTRACT NO. 61L60								
	PLOT DATE = 3/4/2019	DATE - 03-19-90	REVISED - C. JUCIUS 04-12-16						SCALE: NONE	SHEET 1 OF 2 SHEETS	STA. TO STA.	ILLINOIS	FED. AID PROJECT 277K(198)



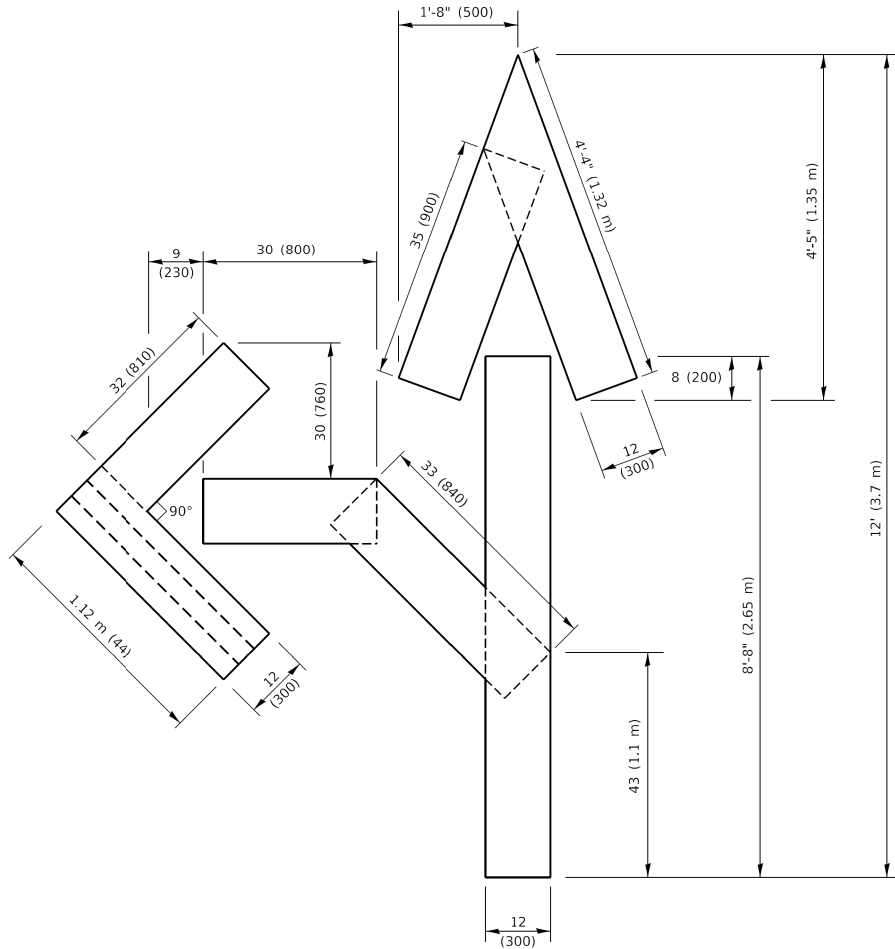
QUANTITY

4 (100) LINE = 45.5 ft. (13.9 m)
15.2 sq. ft. (1.41 sq. m)



QUANTITY

4 (100) LINE = 64.1 ft. (19.5 m)
21.4 sq. ft. (1.99 sq. m)

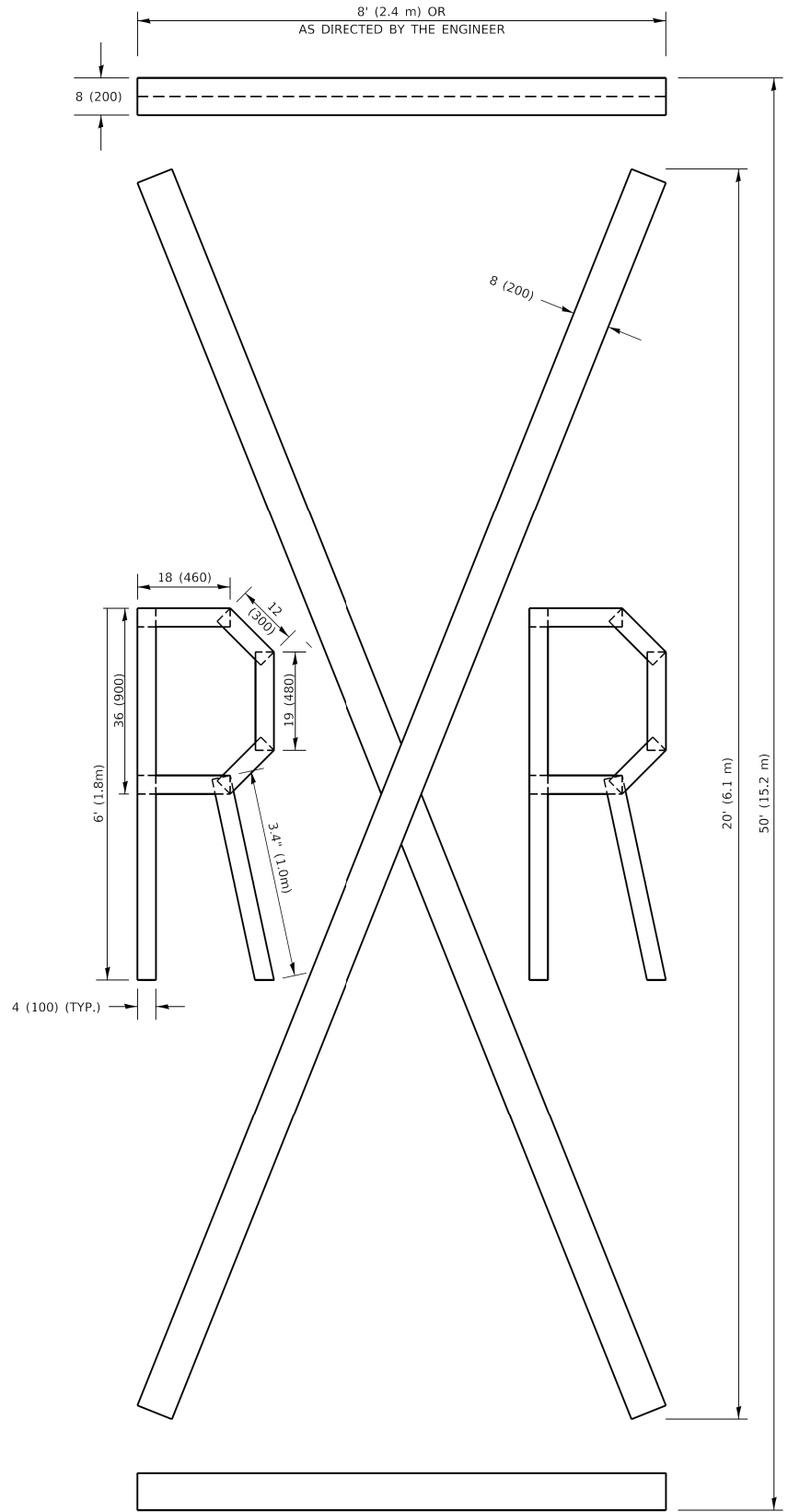


QUANTITY

4 (100) LINE = 82.5 ft. (25.1 m)
27.5 sq. ft. (2.53 sq. m)

NOTE:

ALL QUANTITIES OF PLACEMENT ARE REPRESENTED IN LINEAR FEET OF 4" LINES TO MATCH THE 4" TEMPORARY TAPE PAY ITEM AND REPRESENTS THE TOTAL QUANTITY OF 4" TAPE REQUIRED.



QUANTITY

4 (100) LINE = 225.9 ft. (68.9 m)
75.3 sq. ft. (6.99 sq. m)

All dimensions are in inches (millimeters) unless otherwise shown.

MODEL: Default
FILE NAME: p:\u1084EB\DOT\Illinois.gov\PIWDOT\Documents\DOT - Office\District 1\Projects\DisS422\4CAD\DATA\CAD\Sheets\TC-16.dgn

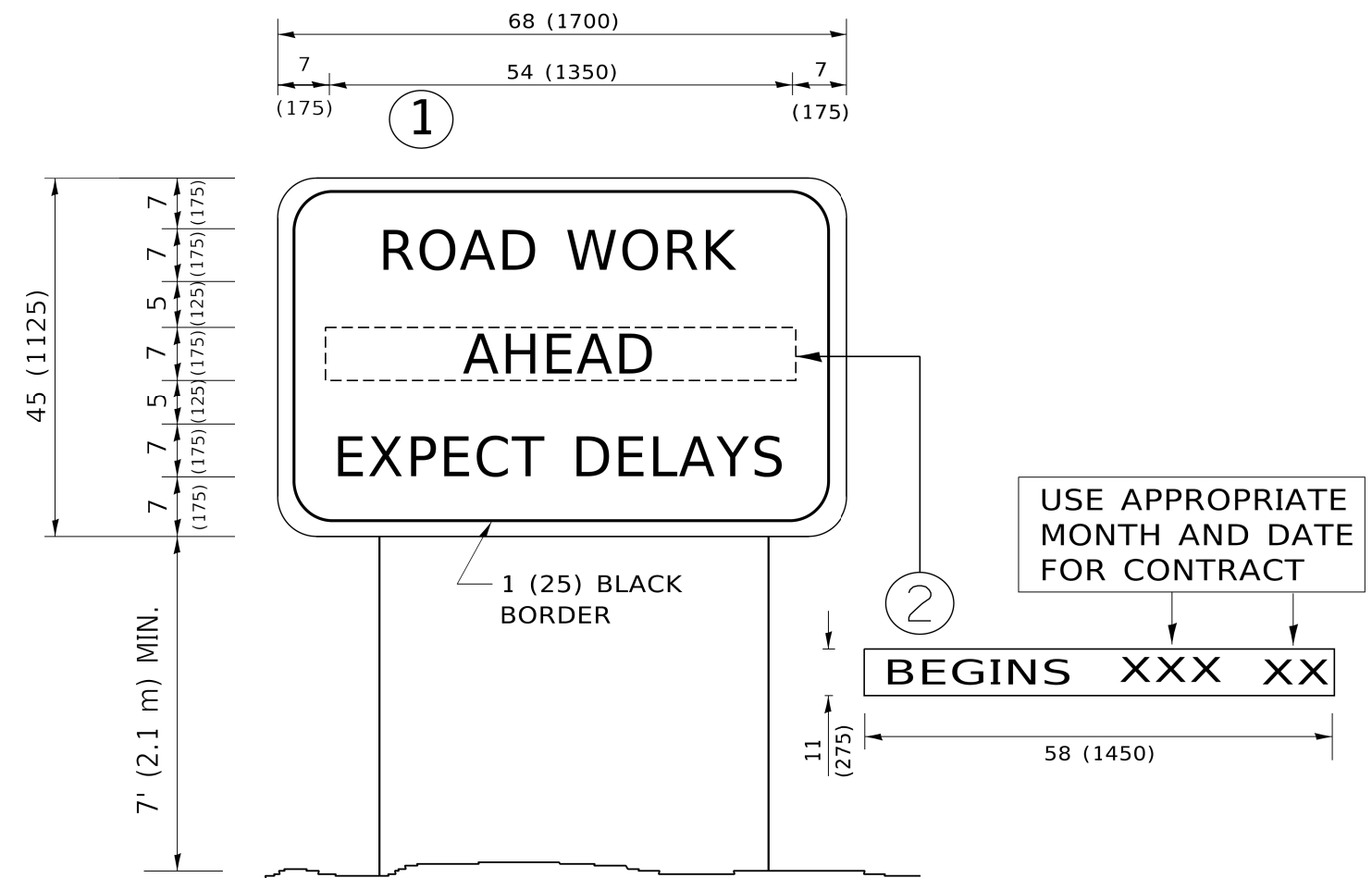
USER NAME = footemj	DESIGNED -	REVISED - T. RAMMACHER 03-02-98
DRAWN -	REVISD - E. GOMEZ 08-28-00	
PLOT SCALE = 50.0068 ' / in.	CHECKED -	REVISED - E. GOMEZ 08-28-00
PLOT DATE = 3/4/2019	DATE - 09-18-94	REVISED - A. SCHUETZE 09-15-16

STATE OF ILLINOIS
DEPARTMENT OF TRANSPORTATION

SHORT TERM PAVEMENT MARKING LETTERS AND SYMBOLS

SCALE: NONE SHEET 1 OF 1 SHEETS STA. TO STA.

F.A. RTE.	SECTION	COUNTY	TOTAL SHEETS	SHEET NO.
2517	24-00060-00-RS	KANE	25	24
TC-16		CONTRACT NO. 61L60		
		ILLINOIS	FED. AID PROJECT	277K(198)



NOTES:

1. USE BLACK LETTERING ON ORANGE BACKGROUND.
2. ERECT SIGNS IN ADVANCE OF THE LOCATION FOR THE "ROAD CONSTRUCTION AHEAD" SIGN AT LOCATIONS AS DIRECTED BY THE ENGINEER.
3. ERECT SIGN①WITH INSTALLED PANEL②ONE WEEK PRIOR TO THE START OF CONSTRUCTION.
4. REMOVE PANEL②SOON AFTER THE START OF CONSTRUCTION.
5. SEE SPECIAL PROVISION FOR "TEMPORARY INFORMATION SIGNING" FOR ADDITIONAL INFORMATION.
6. ONE SIGN ASSEMBLY EQUALS 25.70 SQ. FT. (2.3 SQ. M.)
7. SHALL BE PAID FOR AS TEMPORARY INFORMATION SIGNING.

ALL DIMENSIONS ARE IN INCHES (MILLIMETERS)
UNLESS OTHERWISE SHOWN.

FILE NAME: D:\A\A000000.DWG	USER NAME = footemj	DESIGNED -	REVISED - R. MIRS 09-15-97	STATE OF ILLINOIS DEPARTMENT OF TRANSPORTATION	ARTERIAL ROAD INFORMATION SIGN				F.A. RTE.	SECTION	COUNTY	TOTAL SHEETS	SHEET NO.
		DRAWN -	REVISED - R. MIRS 12-11-97						2517	24-00060-00-RS	KANE	25	25
	PLOT SCALE = 50.0000 ' / in.	CHECKED -	REVISED - T. RAMMACHER 02-02-99		TC-22 CONTRACT NO. 61L60								
	PLOT DATE = 3/4/2019	DATE -	REVISED - C. JUCIUS 01-31-07										
					SCALE: NONE	SHEET 1	OF 1 SHEETS	STA.	TO STA.	ILLINOIS FED. AID PROJECT 277K(198)			