

STATE OF ILLINOIS  
DEPARTMENT OF TRANSPORTATION  
DIVISION OF HIGHWAYS

PROPOSED  
HIGHWAY PLANS

FAI ROUTE 55/70 (I-55/70)  
SECTION 60-(6, 7, 8, 9, 10)I, 60-(1, 2)I-3

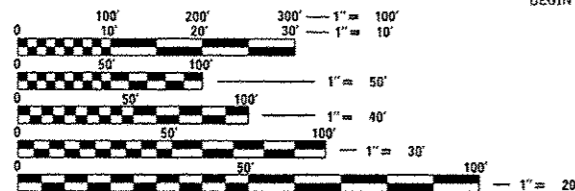
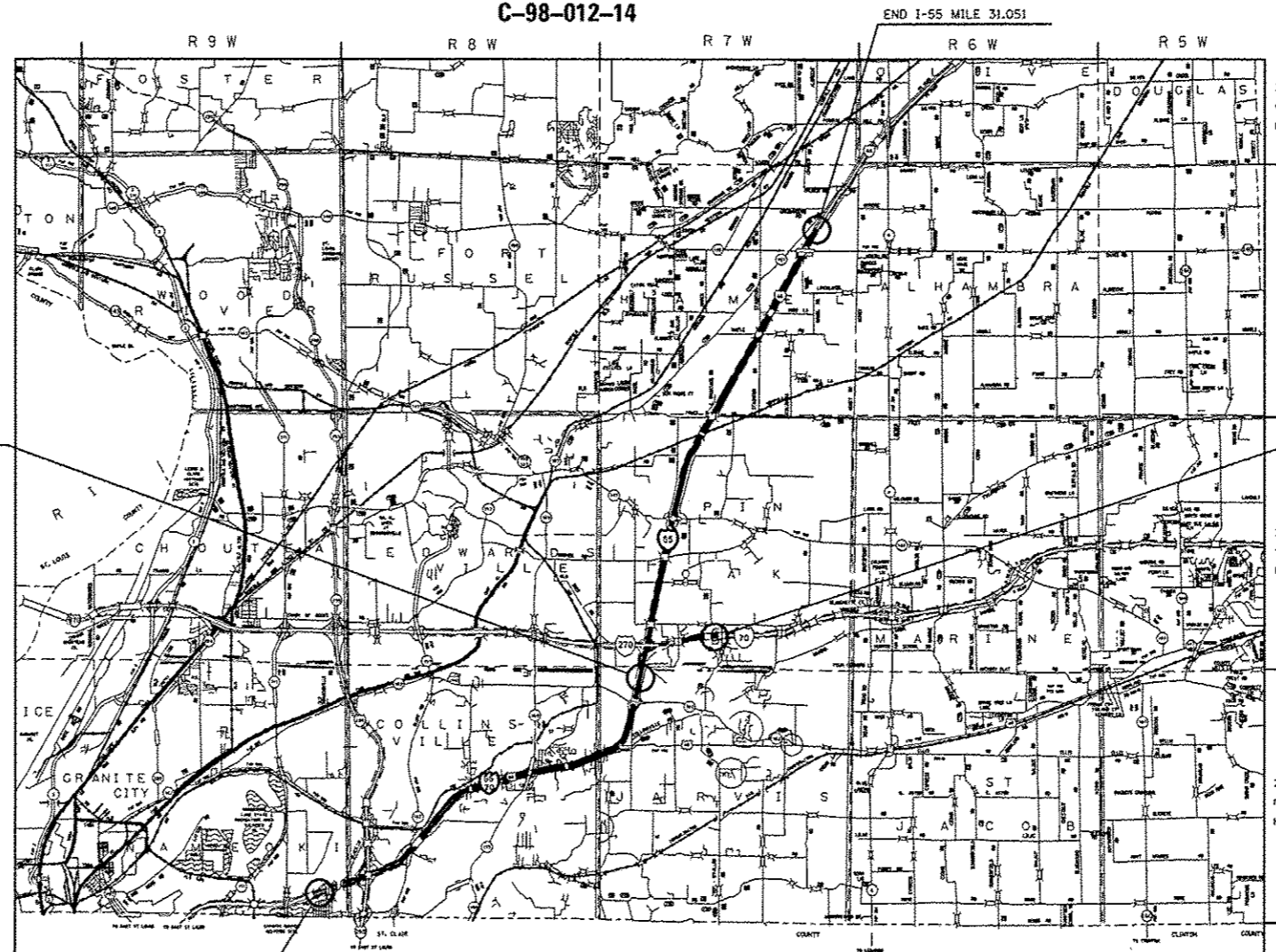
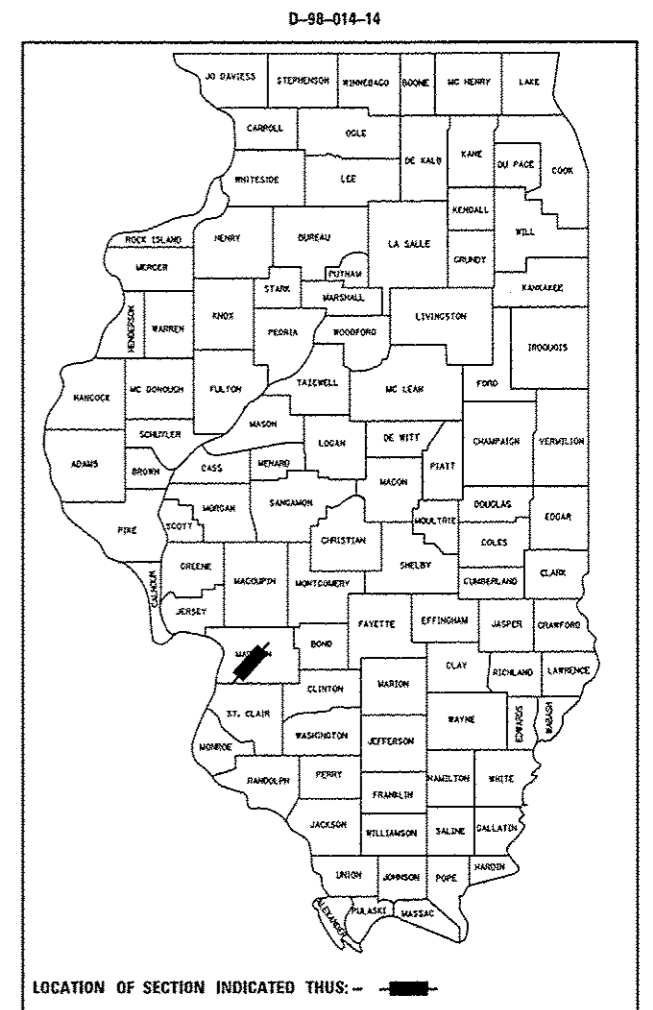
CRACK SEAL  
MADISON COUNTY  
C-98-012-14

F.A.I. RTE.	SECTION	COUNTY	TOTAL SHEETS	SHEET NO.
55/70	60-16,7,8,9,10)I, 60-(1,2)I-3	MADISON	9	1
		ILLINOIS	CONTRACT NO. 76G88	

FOR INDEX OF SHEETS, SEE SHEET NO. 2

AADT: I-55/70 - 51,900(2014)/59,600(2034) MU = 14.4% SU = 2.3%  
I-70 - 30,200(2014)/34,700(2034) MU = 27.3% SU = 2.8%  
I-55 - 30,100(2014)/34,600(2034) MU = 20.1% SU = 1.6%

BEGIN I-55/70: LAT. - 38°39'55"N  
LONG. - 90°03'24"W  
END I-55/70: LAT. - 38°44'30"N  
LONG. - 89°54'36"W  
BEGIN I-70: LAT. - 38°44'30"N  
LONG. - 89°54'36"W  
END I-70: LAT. - 38°45'20"N  
LONG. - 89°52'08"W  
BEGIN I-55: LAT. - 38°44'30"N  
LONG. - 89°54'36"W  
END I-55: LAT. - 38°54'21"N  
LONG. - 89°49'35"W



FULL SIZE PLANS HAVE BEEN PREPARED USING STANDARD ENGINEERING SCALES. REDUCED SIZED PLANS WILL NOT CONFORM TO STANDARD SCALES. IN MAKING MEASUREMENTS ON REDUCED PLANS, THE ABOVE SCALES MAY BE USED.

J.U.L.I.E.  
JOINT UTILITY LOCATION INFORMATION FOR EXCAVATION  
1-800-892-0123  
OR 811

PROJECT ENGINEER: MICHAEL PRITCHETT (618) 346-3180  
DESIGNER: BO WEDMORE (618) 346-3206

CONTRACT NO. 76G88

STATE OF ILLINOIS  
DEPARTMENT OF TRANSPORTATION  
DIVISION OF HIGHWAYS  
SUBMITTED *May 28 2014*  
*Jeffrey Z. Kan...*  
DEPUTY DIRECTOR OF HIGHWAYS, REGION ENGINEER  
*May 9 2014*  
*John D. Baranzelli, P.E.*  
ENGINEER OF DESIGN AND ENVIRONMENT  
*May 9 2014*  
*Omer Osman, P.E.*  
DIRECTOR OF HIGHWAYS, CHIEF ENGINEER

PRINTED BY THE AUTHORITY  
OF THE STATE OF ILLINOIS

SCALE 0 1 2 3 4 5 MILES  
GROSS LENGTH = x.xx FT. = x.xxx MILE  
NET LENGTH = x.xx FT. = x.xxx MILE