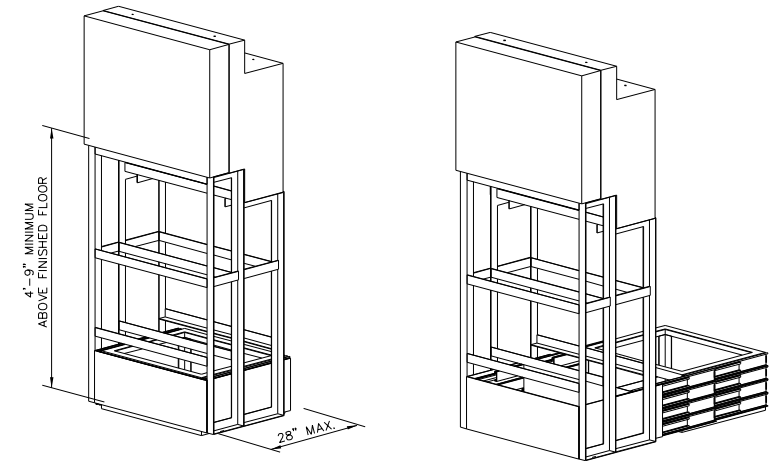
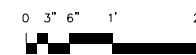


NORTH
EXISTING VIDEO WALL PLAN VIEW

SCALE: 1" = 1'-0"



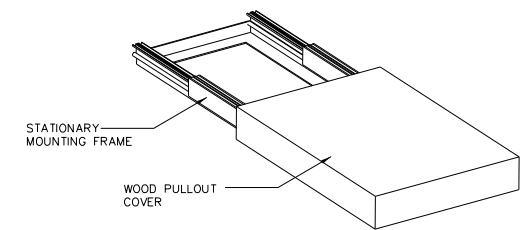
CLOSED POSITION VIEW

OPEN POSITION VIEW

50" CUBE PULLOUT - ORTHOGRAPHIC VIEW

NOT TO SCALE

(FOR ILLUSTRATION PURPOSES ONLY)

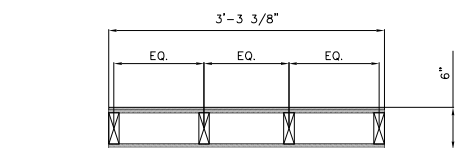


NOTE: MAX. DEPTH IN THE CLOSED POSITION SHALL BE 28"

20" MONITOR MANUAL PULLOUT PLATFORM

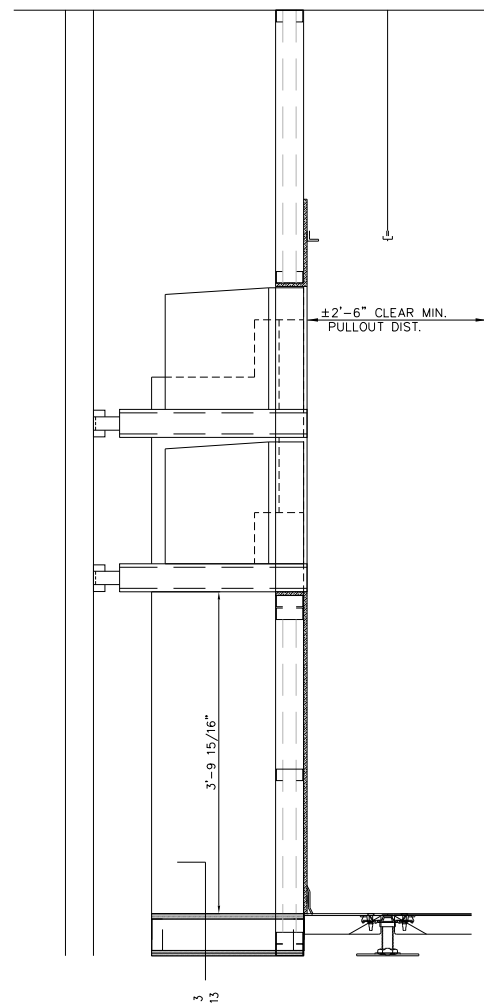
NOT TO SCALE

(FOR ILLUSTRATION PURPOSES ONLY)



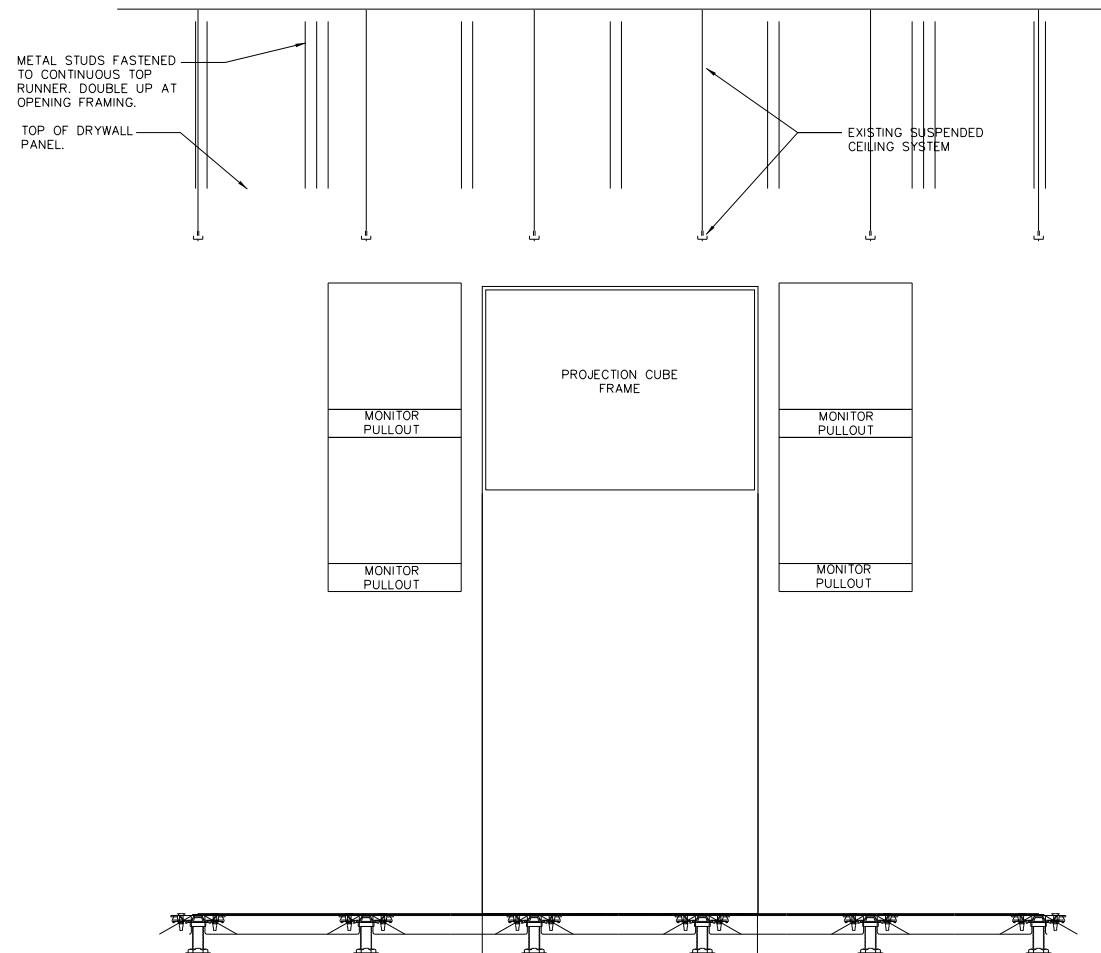
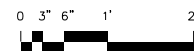
REAR PROJECTION CUBE
PLATFORM DETAIL

NOT TO SCALE



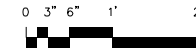
VIDEO WALL SECTION

1
13
SCALE: 1" = 1'-0"



ELEVATION AT VIDEO WALL

2
13
SCALE: 1" = 1'-0"



FOR INFORMATION ONLY

FILE NAME = 68B73 - Com Center Plans (Final Plans 3-28-14).dgn	USER NAME = keithbr	DESIGNED -	REVISED -	STATE OF ILLINOIS DEPARTMENT OF TRANSPORTATION	EXISTING VIDEO WALL IDOT DISTRICT 4 COMMUNICATIONS CENTER				F.A.I. RTE.	SECTION	COUNTY	TOTAL SHEETS	SHEET NO.
		DRAWN -	REVISED -						74	D4 ITS SYSTEM 2014	PEORIA	11	8
	PLOT SCALE = 95.1478 ' / in.	CHECKED -	REVISED -						CONTRACT NO. 68B72				
	PLOT DATE = 3/28/2014	DATE -	REVISED -						ILLINOIS FED. AID PROJECT				
	SCALE:		STA.										