

# DRAINAGE STRUCTURES AND STORM SEWERS TABLE

## DRAINAGE STRUCTURES

1 STA. 497+39.0, 21.6 RT  
CB TYP.A 4' DIA. W/ F&G TYP.24  
T.O.G. = 628.4  
INV.(NW) = 619.0  
EXISTING INV.(SW) = 622.1 (MAINTAIN)

4 STA. 498+10.5, 22.4 LT  
CB TYP.A 4' DIA. W/ F&G TYP. 24  
T.O.G. = 623.7  
INV.(NW) = 616.0

5 STA. 498+38.5, 21.0 RT  
MH TYP.A 4' DIA. W/ F&G CL TYP.1  
T.O.G. = 621.8  
INV.(S) = 614.8 INV.(SE) = 616.3  
INV.(NW) = 613.3

8 STA. 499+25.3, 28.8 RT  
CB TYP.A 4' DIA. W/ F&G TYP.24  
T.O.G. = 616.7  
INV.(N) = 613.0

FLAT TOP 9 STA. 499+29.8, 34.5 RT  
MH TYP.A 5' DIA. W/ F&G CL TYP.1  
T.O.G. = 616.9  
INV.(S) = 612.9 INV.(SE) = 612.3  
INV.(SW) = 612.0 INV.(NW) 612.6 (EXISTING)

FLAT TOP 10 STA. 499+42.3, 36.5 LT  
MH TYP.A 5' DIA. W/ F&G CL TYP.1  
T.O.G. = 616.9  
INV.(NW) = 611.0 INV.(NE) = 611.3

FLAT TOP 11 STA. 499+55.9, 38.2 LT  
CB TYP.A 5' DIA. W/ F&G TYP.24  
T.O.G. = 616.2  
INV.(NW) = 610.7 INV.(SE) = 610.9

FLAT TOP 12 STA. 500+49.34, 49.8 LT  
MH TYP.A 5' DIA. W/ F&G CL TYP.1  
T.O.G. = 614.8  
INV.(NW) = 610.1 INV.(SE) = 610.3

FLAT TOP 13 STA. 198+11.3, 29.0 LT  
MH TYP.A 5' DIA. W/ F&G CL TYP.1  
T.O.G. = 616.5  
INV.(NE) = 609.8  
INV.(SW) = 610.1 (EXIST. MAINTAIN)

FLAT TOP 14 STA. 198+40.1, 25.9 LT  
CB TYP.A 4' DIA. W/ F&G TYP.24  
T.O.G. = 615.9  
INV.(NE) = 610.7

15 STA. 198+60.7, 26.3 LT  
CB TYP.A 4' DIA. W/ F&G TYP.24  
T.O.G. = 615.8  
INV.(NW) = 610.3 INV.(SW) = 610.5

FLAT TOP 16 STA. 198+60.3, 37.2 LT  
MH TYP.A 5' DIA. W/ F&G CL TYP.1  
T.O.G. = 615.9  
INV.(NE) = 609.5 INV.(SW) = 609.6  
INV.(SE) = 610.2

17 STA. 199+36.4, 44.6 LT  
CB TYP.A 4' DIA. W/ F&G TYP.24  
T.O.G. = 615.1  
INV.(SW) = 609.5

FLAT TOP 18 STA. 199+24.5, 48.4 LT  
MH TYP.A 5' DIA. W/ F&G CL TYP.1  
T.O.G. = 614.8  
INV.(N) = 609.2 INV.(NE) = 609.4  
INV.(SW) = 609.3

FLAT TOP 19 STA. 500+68.9, 52.8 LT  
MH TYP.A 6' DIA. W/ F&G CL TYP.1  
T.O.G. = 614.6  
INV.(S) = 609.1 INV.(SE) = 609.9  
INV.(NW) = 603.5  
NOTE: SEE DISTRICT DETAIL BD-12 FOR OTHER ELEVATIONS AND REQUIREMENTS  
OUTLET #2 RESTRICTOR NOTE: SEE DISTRICT DETAIL BD-12 FOR OTHER ELEVATIONS AND REQUIREMENTS

20 STA. 500+89.4, 39.9 RT  
CB TYP.A 4' DIA. W/ F&G TYP.24  
T.O.G. = 614.5  
INV.(SW) = 609.0

21 STA. 500+77.6, 39.3 LT  
CB TYP.A 4' DIA. W/ F&G TYP.24  
T.O.G. = 614.3  
INV.(NW) = 608.8

22 STA. 500+88.4, 38.1 LT  
CB TYP.A 4' DIA. F&G TYP.24  
T.O.G. = 614.4  
INV.(SE) = 608.7 INV.(NE) = 608.0  
INV.(SW) = 606.0

23 STA. 500+88.1, 52.1 LT  
MH TYP.A 5' DIA. W/ F&G CL TYP.1  
T.O.G. = 612.5  
INV.(NW) = 603.0 INV.(NE) = 605.7  
INV.(SE) = 603.3

24 STA. 500+99.1, 58.5 LT  
MH TYP.A 5' DIA. W/ F&G CL TYP.1  
T.O.G. = 611.1  
INV.(SE) = 602.9 INV.(NW) = 599.7

25 STA. 501+89.3, 29.2 RT  
CB TYP.A 4' DIA. W/ F&G TYP.24  
T.O.G. = 616.5  
INV.(E) = 611.0

26 STA. 501+90, 37.2 LT  
CB TYP.A 4' DIA. W/ F&G TYP.24  
T.O.G. = 616.3  
INV.(NE) = 609.7 INV.(S) = 601.0

27 STA. 501+67.8, 63.1 LT  
MH TYP.A 5' DIA. W/ F&G CL TYP.1  
T.O.G. = 606.6  
INV.(SE) = 599.0 INV.(N) = 600.0  
INV.(NW) = 595.5

FLAT TOP 28 STA. 502+90.6, 71.2 LT  
CB TYP.A 5' DIA. W/ F&G TYP.8  
T.O.G. = 597.8  
INV.(SE) = 594.0 INV.(NW) = 593.7

FLAT TOP 29 STA. 504+19.2, 76.8 LT  
MH TYP.A 5' DIA. W/ F&G CL TYP.1  
T.O.G. = 596.5  
INV.(NW) = 593.1 INV.(SE) = 593.1

FLAT TOP 30 STA. 504+45.8, 73.2 LT  
MH TYP.A 5' DIA. W/ F&G CL TYP.1  
T.O.G. = 597.4  
INV.(SE) = 593.0

31 STA. 200+54.1, 56.2 LT  
CB TYP.A 4' DIA. W/ F&G TYP.24  
T.O.G. = 614.3  
INV.(E) = 608.5

32 STA. 200+65.3, 45.4 LT  
CB TYP.A 4' DIA. W/ F&G TYP.24  
T.O.G. = 614.2  
INV.(W) = 608.3 INV.(NE) = 608.0

33 STA. 201+84.3, 37.3 LT  
CB TYP.A 4' DIA. W/ F&G TYP.24  
T.O.G. = 612.5  
INV.(NW) = 607.0

34 STA. 201+84.4, 44.0 LT  
MH TYP.A 4' DIA. W/ F&G CL TYP.1  
T.O.G. = 613.1  
INV.(SW) = 606.0 INV.(SE) = 606.9  
INV.(NE) = 605.8

35 STA. 203+03, 33.5 LT  
CB TYP.A 4' DIA. W/ F&G TYP.24  
T.O.G. = 611.2  
INV.(W) = 605.6  
INV.(E) = 605.9 (EXIST. MAINTAIN)

36 STA. 202+93.9, 37.4 LT  
CB TYP.A 4' DIA. W/ F&G TYP.24  
T.O.G. = 611.2  
INV.(NW) = 605.2 INV.(E) = 605.4

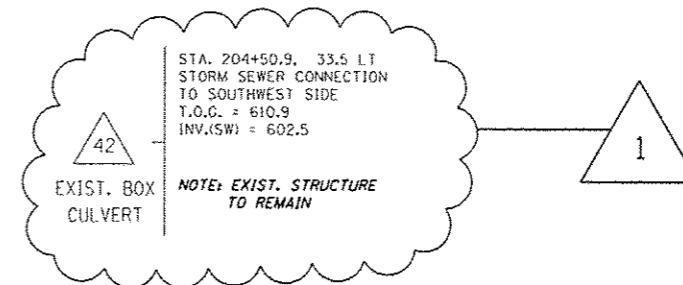
FLAT TOP 37 STA. 202+93.5, 43.9 LT  
MH TYP.A 5' DIA. W/ F&G CL TYP.1  
T.O.G. = 612.2  
INV.(SW) = 604.6 INV.(SE) = 605.1  
INV.(NE) = 604.3

38 STA. 203+74.1, 29.0 LT  
MH TYP.A 4' DIA. W/ F&G CL TYP.1  
T.O.G. = 610.8  
INV.(NW) = 604.5  
INV.(SE) = 604.7 (EXIST. MAINTAIN)

39 STA. 203+73.2, 37.3 LT  
CB TYP.A 4' DIA. W/ F&G TYP.24  
T.O.G. = 610.4  
INV.(NW) = 604.2 INV.(SE) = 604.4

40 STA. 203+72.6, 44.0 LT  
MH TYP.A 5' DIA. W/ F&G CL TYP.1  
T.O.G. = 610.7  
INV.(SE) = 604.1 INV.(SW) = 603.1  
INV.(NE) = 602.9

41 STA. 204+40.5, 33.7 LT  
MH TYP.A 6' DIA. W/ F&G CL TYP.1  
T.O.G. = 610.4  
INV.(SW) = 602.7 INV.(NE) = 602.6  
OUTLET #3 RESTRICTOR NOTE: SEE DISTRICT DETAIL BD-12 FOR OTHER ELEVATIONS AND REQUIREMENTS



FLAT TOP 45 STA. 207+32.0, 16.9 LT  
CB TYP.A 4' DIA. W/ F&G TYP.24  
T.O.G. = 615.6  
INV.(SW) = 606 INV.(SE) = 607.2

46 STA. 206+23.3, 24.9 LT  
CB TYP.A 4' DIA. W/ F&G TYP.24  
T.O.G. = 613.7  
INV.(NE) = 604.8 INV.(SW) = 604.6

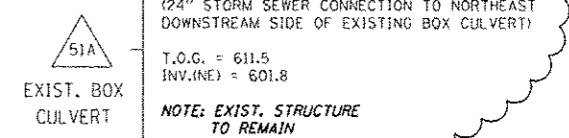
47 STA. 207+26.9, 30.1 RT  
CB TYP.A 4' DIA. W/ F&G TYP.8  
T.O.G. = 616.6 TO MATCH PROP. SWALE ELEV.  
INV.(SW) = 608.5

FLAT TOP 48 STA. 207+01, 16.3 RT  
CB TYP.A 4' DIA. W/ F&G TYP.24  
T.O.G. = 615.2  
INV.(S) = 608.2

FLAT TOP 49 STA. 206+95.7, 26.4 RT  
MH TYP.A 4' DIA. W/ F&G CL TYP.1  
T.O.G. = 615.9 (PROPOSED; SEE CROSS-SECTION)  
INV.(N) = 608.0 INV.(NE) = 608.0  
INV.(SW) = 607.9 (EXISTING, MAINTAIN)

FLAT TOP 50 STA. 204+76.7, 19.5 RT  
CB TYP.A 4' DIA. W/ F&G TYP.24  
T.O.G. = 611.8  
INV.(SE) = 607.3

FLAT TOP 51 STA. 204+76.8, 27.7 RT  
CB TYP.A 4' DIA. W/ F&G OL TYP.1  
T.O.G. = 611.8  
INV.(NW) = 607.1  
INV.(NE) = 602.2  
INV.(SW) = 602.0



**NOTE:**

STORM SEWER OFFSET LOCATIONS GIVEN ON THE DETAILED PLANS ARE TO THE FOLLOWING POINTS:

- A) TO THE PAVEMENT EDGE, FOR STRUCTURES FALLING IN THE CURB LINE.
- B) TO THE CENTER OF THE STRUCTURE FOR ALL OTHER STRUCTURE LOCATIONS.

1 REVISED AP 5/22/14

FILE NAME :	USER NAME : pparagmal	DESIGNED -	REVISED -	<b>STATE OF ILLINOIS</b>	<b>DRAINAGE TABLE</b>	F.A.U. R.T.E.	SECTION	COUNTY	TOTAL SHEETS	SHEET NO.
Default:	c:\pwworkspace\pparagmal\148168753\148168753.dwg	DRAWN -	REVISED -	<b>DEPARTMENT OF TRANSPORTATION</b>	<b>IL. ROUTE 171 (ARCHER AVE.) AT 104th AVE.</b>	3565	B-N-5	COOK	129	43
	PLOT SCALE : 1/8"=1'-0"	CHECKED -	REVISED -							
	PLOT DATE : 5/23/2014	DATE -	REVISED -		SCALE:	SHEET	OF	SHEETS	STA.	TO STA.
										ILLINOIS FED. AID PROJECT
										<b>CONTRACT NO. 60T24</b>