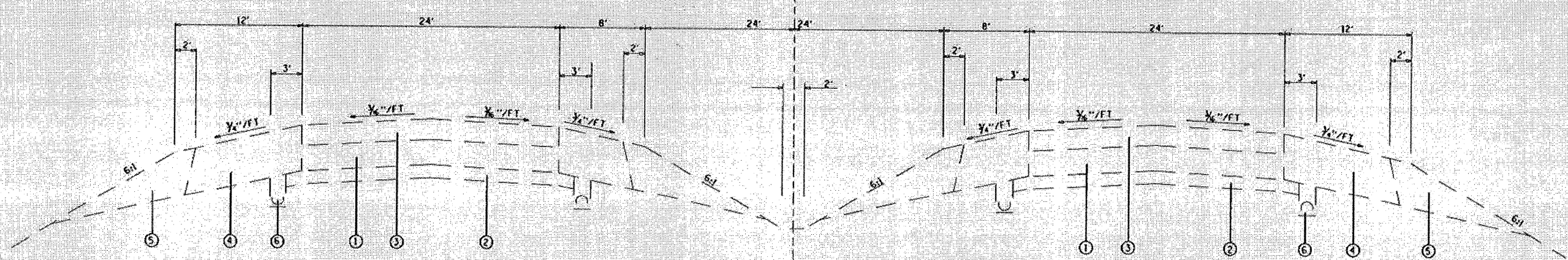


WB - SUPERELEVATION

STA. 1192+36.95 TO STA. 1217+33.44
 STA. 1311+77.57 TO STA. 1345+12.21
 STA. 1356+65.00 TO STA. 1358+17.01

EB - SUPERELEVATION

STA. 1192+36.95 TO STA. 1207+95.63
 STA. 1214+30.24 TO STA. 1217+33.44
 STA. 1311+77.57 TO STA. 1345+79.31
 STA. 1351+74.80 TO STA. 1358+17.01



WB - TANGENT SECTION

STA. 1153+80.85 TO STA. 1192+36.95
 STA. 1217+33.44 TO STA. 1228+96.44
 STA. 1243+07.48 TO STA. 1261+62.94
 STA. 1268+31.60 TO STA. 1311+77.57
 STA. 1358+17.01 TO STA. 1364+26.26
 STA. 1367+29.00 TO STA. 1376+42.69

EB - TANGENT SECTION

STA. 1153+80.85 TO STA. 1192+36.95
 STA. 1217+33.44 TO STA. 1233+37.00
 STA. 1247+48.74 TO STA. 1311+77.57
 STA. 1358+17.01 TO STA. 1363+71.57
 STA. 1366+74.31 TO STA. 1374+17.20

LEGEND

- ① EXISTING C.R.P.C.C. PAVEMENT 8"
- ② EXISTING SUB-BASE 4"
- ③ EXISTING RESURFACING 6-1/2" OR 8-1/4"
- ④ EXISTING BITUMINOUS SHOULDER
- ⑤ EXISTING AGGREGATE SHOULDER, TYPE B
- ⑥ EXISTING PIPE UNDERDRAINS
- ⑦ EXISTING JR PCC Pavement 9 1/2"
- ⑧ EXISTING CONCRETE CURB & GUTTER COMB., B 6.24

FILE NAME =	USER NAME = RUSBYN	DESIGNED -	REVISED -
WFLEL4		DRAWN -	REVISED -
		CHECKED -	REVISED -
		DATE -	REVISED -

STATE OF ILLINOIS
 DEPARTMENT OF TRANSPORTATION

TYPICALS
 SCALE: 30' = 1" SHEET NO. OF SHEETS STA. TO STA.

ST. CLAIR & CLINTON COUNTIES			
F.A. RTE.	SECTION	COUNTY	TOTAL SHEET NO.
1-64	82-10.3.1011	IL	4
FED. ROAD DIST. NO. ILLINOIS FED. AID PROJECT			CONTRACT NO. 76846

ST. CLAIR & CLINTON