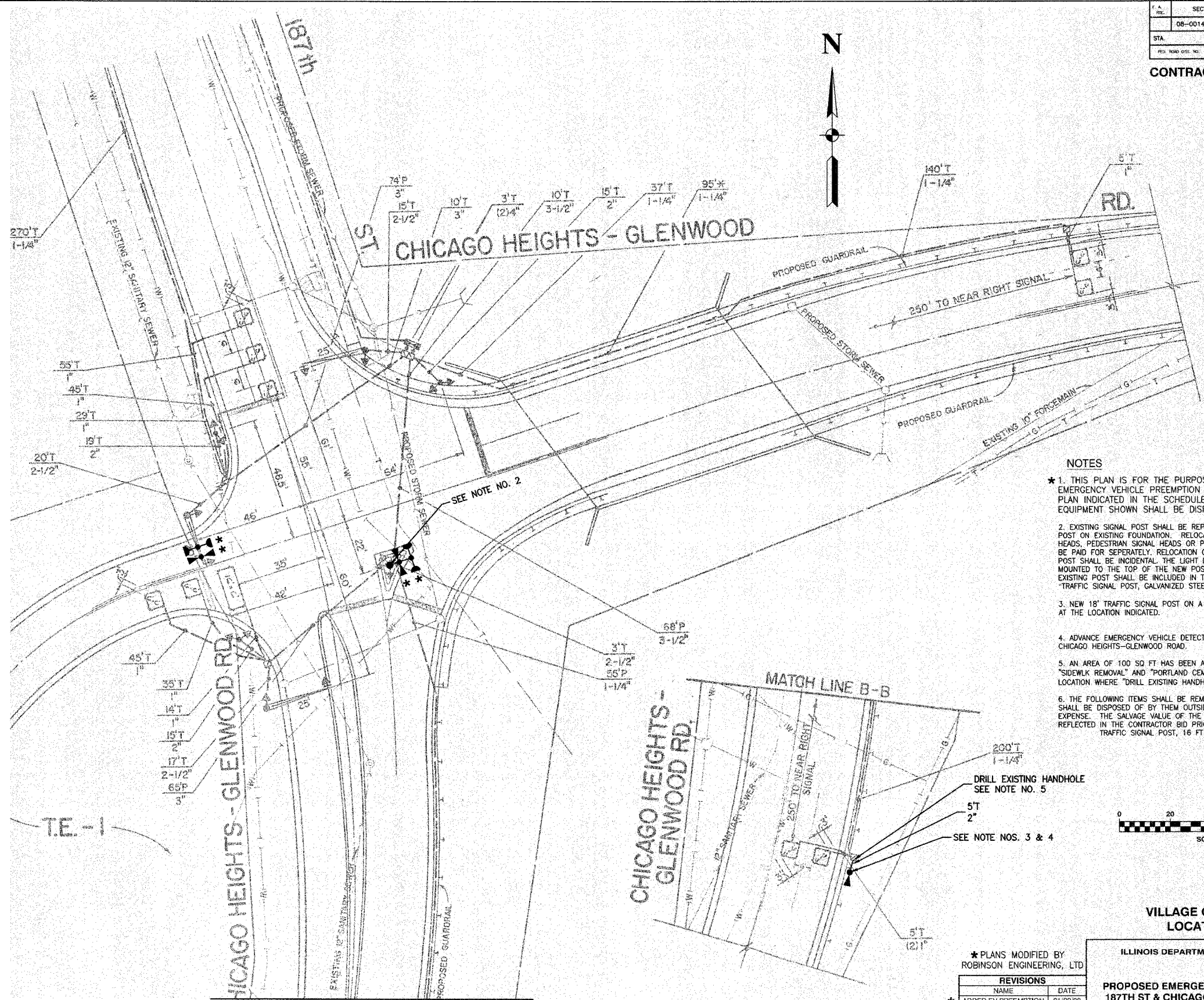


F.A. NO.	SECTION	COUNTY	TOTAL SHEETS	SHEET NO.
	08-00146-00-TL	COOK	273	134
STA.	TO STA.			
FED. ROAD DIST. NO.	CLASS.	FED. RD. PROJECT		

CONTRACT NO. 63003

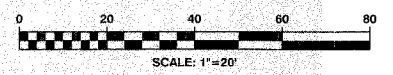
TRAFFIC SIGNAL LEGEND

	PROPOSED	EXISTING
CONTROLLER		
SERVICE INSTALLATION		
SIGNAL HEAD		
SIGNAL HEAD WITH BACKPLATE		
SIGNAL HEAD, PEDESTRIAN		
SIGNAL POST		
MAST ARM ASSEMBLY AND POLE, STEEL		
MAST ARM ASSEMBLY AND POLE, ALUMINUM		
COMBINATION MAST ARM ASSEMBLY AND POLE STEEL WITH LUMINAIRE		
UNIT DUCT		
COMMON TRENCH		
HANDHOLE		
HEAVY DUTY HANDHOLE		
DOUBLE HANDHOLE		
G.S. CONDUIT IN GROUND		
PEDESTRIAN PUSHBUTTON DETECTOR		
DETECTOR LOOP		
CAST IRON JUNCTION BOX		
EMERGENCY VEHICLE SYSTEM DETECTOR		
CONFIRMATION BEACON		
SIGNAL HEAD OPTICALLY PROGRAMMED		
CONDUIT SPLICE		
WOOD POLE		
RACEWAY FOR MAGNETIC DETECTOR, TYPE I OR TYPE II		
VEHICLE DETECTOR, NON COMPENSATED MAGNETIC TYPE		
RAILROAD CONTROL CABINET		
TELEPHONE CONNECTION		
ILLUMINATED SIGN, FIBER OPTIC "NO LEFT TURN"		
ILLUMINATED SIGN, FIBER OPTIC "NO RIGHT TURN"		



NOTES

- * 1. THIS PLAN IS FOR THE PURPOSE OF INSTALLING EMERGENCY VEHICLE PREEMPTION EQUIPMENT AS SHOWN PER PLAN INDICATED IN THE SCHEDULE OF QUANTITIES. ALL OTHER EQUIPMENT SHOWN SHALL BE DISREGARDED.
- 2. EXISTING SIGNAL POST SHALL BE REPLACED WITH NEW 18-FOOT SIGNAL POST ON EXISTING FOUNDATION. RELOCATION OF ANY EXISTING SIGNAL HEADS, PEDESTRIAN SIGNAL HEADS OR PEDESTRIAN PUSHBUTTONS SHALL BE PAID FOR SEPARATELY. RELOCATION OF ANY SIGNS BRACKETED TO THE POST SHALL BE INCIDENTAL. THE LIGHT DETECTOR SHALL BE BRACKET MOUNTED TO THE TOP OF THE NEW POST. THE SALVAGE VALUE OF THE EXISTING POST SHALL BE INCLUDED IN THE PRICE OF THE PAY ITEM. "TRAFFIC SIGNAL POST, GALVANIZED STEEL, 18 FT."
- 3. NEW 18' TRAFFIC SIGNAL POST ON A CONCRETE FOUNDATION, TYPE "A" AT THE LOCATION INDICATED.
- 4. ADVANCE EMERGENCY VEHICLE DETECTOR HEAD FOR NORTHBOUND CHICAGO HEIGHTS-GLENWOOD ROAD.
- 5. AN AREA OF 100 SQ FT HAS BEEN ASSUMED FOR THE PAY ITEMS "SIDEWALK REMOVAL" AND "PORTLAND CEMENT SIDEWALK, 5 INCH" AT EACH LOCATION WHERE "DRILL EXISTING HANDHOLE" OCCURS.
- 6. THE FOLLOWING ITEMS SHALL BE REMOVED BY THE CONTRACTOR AND SHALL BE DISPOSED OF BY THEM OUTSIDE THE RIGHT-OF-WAY AT THEIR EXPENSE. THE SALVAGE VALUE OF THE REMOVED EQUIPMENT SHALL BE REFLECTED IN THE CONTRACTOR BID PRICE:
 TRAFFIC SIGNAL POST, 16 FT. EACH 1



VILLAGE OF GLENWOOD
LOCATION NO. 57

ILLINOIS DEPARTMENT OF TRANSPORTATION

PROPOSED EMERGENCY VEHICLE PREEMPTION
187TH ST & CHICAGO HEIGHTS-GLENWOOD RD

* PLANS MODIFIED BY
ROBINSON ENGINEERING, LTD

REVISIONS	
NAME	DATE
* ADDED EV PREEMPTION NEW 18' POSTS	01/02/08

SCALE: VERT.
HORIZ.
DATE: DRAWN BY
CHECKED BY

ROBINSON ENGINEERING, LTD.
1700 SOUTH PARK AVENUE SOUTH HOLLAND, ILLINOIS 60473
708.231.4700 FAX 708.231.4800
ILLINOIS DESIGN FIRM REGISTRATION NO. 16402126