

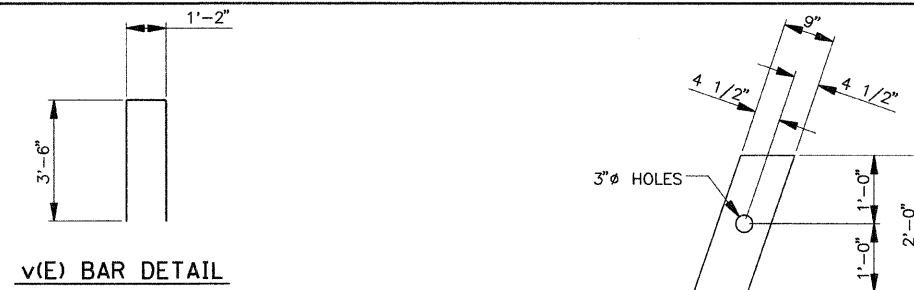
LOADING
 SNOW LOAD: 30 psf
 PEDESTRIAN LOAD: 85 psf
 ALTERNATE CONCENTRATED LOAD: 12 kips

**BILL OF MATERIAL
 SPECIAL STRUCTURE SP-1**

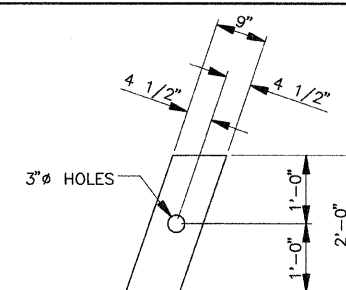
BAR	No.	SIZE	LENGTH	SHAPE
h(E)	16	#5	7'-6"	
p(E)	6	#6	6'-8"	
v(E)	16	#4	8'-2"	
CONCRETE - PIERS		CU YD	5.2	
CONCRETE - CAPS		CU YD	0.35	
REINFORCEMENT BARS EPOXY COATED		POUND	81	
PRECAST SLAB		SQ FT	96	

NOTES

- Lifting loops shall be 3-1/2" φ - 270ksi strands, as shown.
- Steel shall conform to AASHTO M-31, M-42 or M-53 Grade 60.
- The bearing seat surfaces shall be adjusted by shimming to assure firm and even bearing. Provide 1/8" fabric adjusting shims as needed.

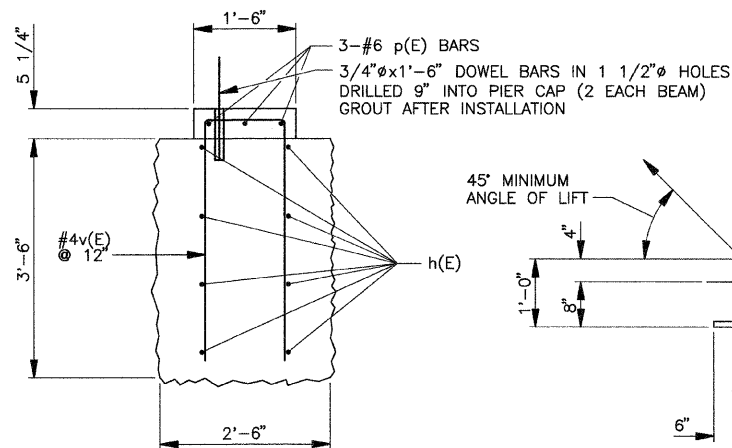


v(E) BAR DETAIL

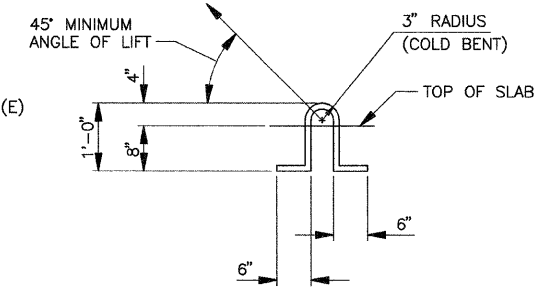


FABRIC BEARING PAD DETAIL

FOUR (4) REQUIRED

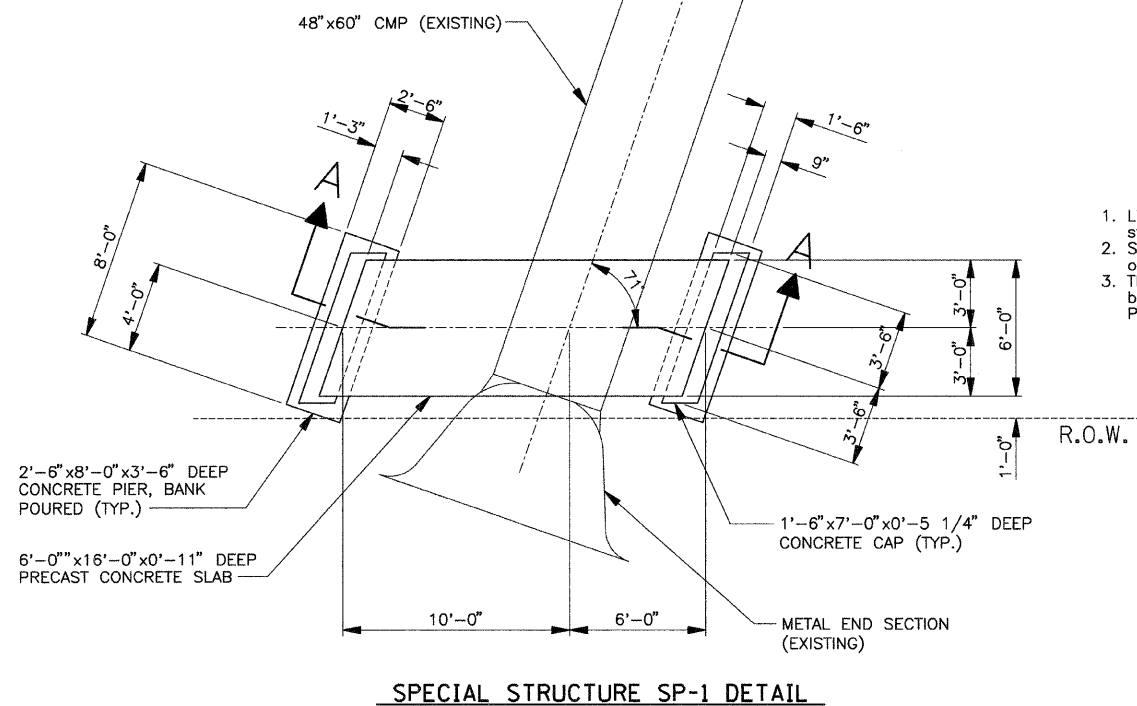


ABUTMENT DETAIL

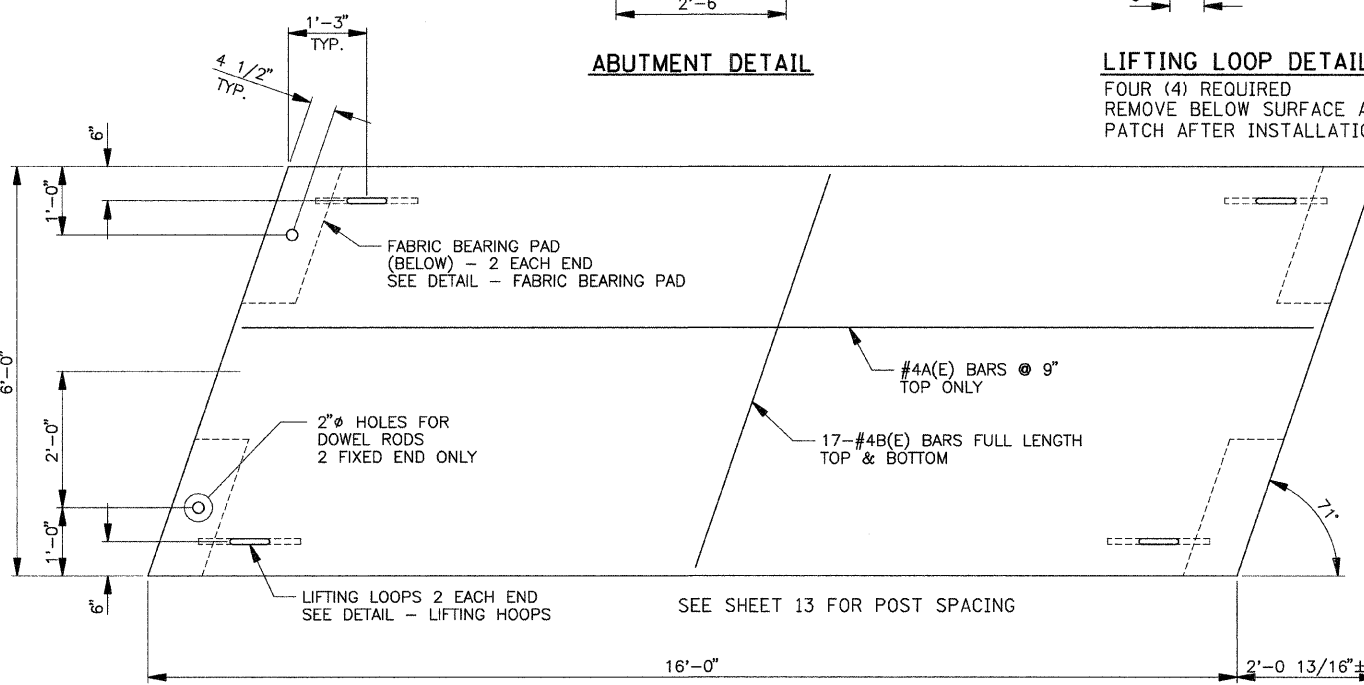


LIFTING LOOP DETAIL

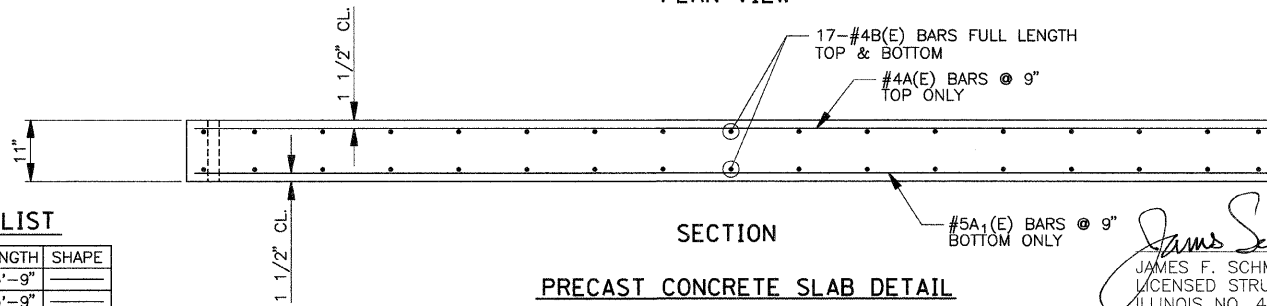
FOUR (4) REQUIRED
 REMOVE BELOW SURFACE AND PATCH AFTER INSTALLATION



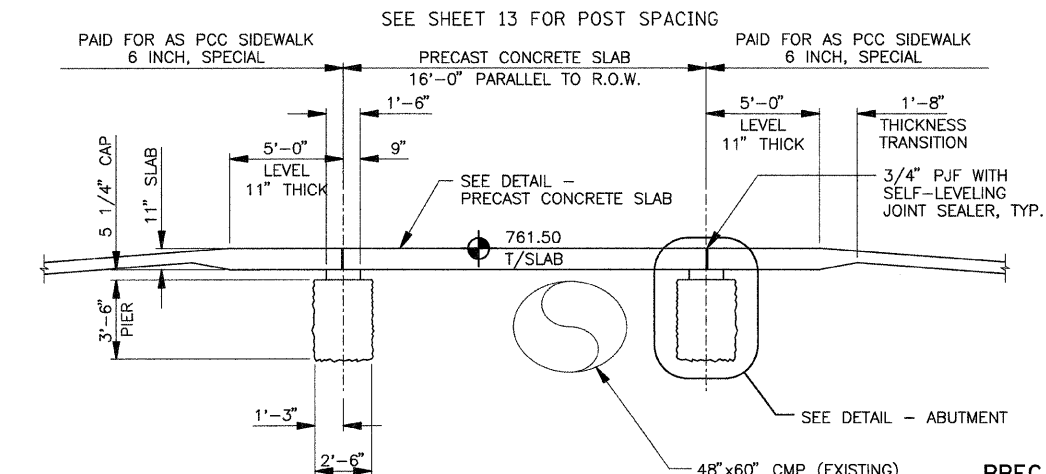
SPECIAL STRUCTURE SP-1 DETAIL



PLAN VIEW



SECTION
PRECAST CONCRETE SLAB DETAIL



SECTION A-A

PRECAST BAR LIST

BAR	No.	SIZE	LENGTH	SHAPE
A(E)	9	#4	15'-9"	
A1(E)	9	#5	15'-9"	
B(E)	34	#4	6'-1"	

**STATE OF ILLINOIS
 DEPARTMENT OF TRANSPORTATION**

SPECIAL STRUCTURE SP-1 DETAILS

F.A. RTE.	SECTION	COUNTY	TOTAL SHEETS	SHEET NO.
	08-00000-00-SW	WOODFORD	21	15

FILE NAME = X:\PE\EL\2008\080803\01\con\Plan\CS.02-H-STRUCTURE DETAILS.dgn



USER NAME = owl
 PLOT SCALE = 1/4" = 1' / IN.
 PLOT DATE = 4/7/2009

DESIGNED -
 DRAWN -
 CHECKED -
 DATE -

REVISED -
 REVISED -
 REVISED -
 REVISED -

SCALE: SHEET NO. OF SHEETS STA. TO STA.

James F. Schumde April 6, 2009
 JAMES F. SCHUMUDE
 LICENSED STRUCTURAL ENGINEER
 OF ILLINOIS
 ILLINOIS NO. 4422 EXPIRES 11-30-10