

CONTRACT NO. 62700

F.A. ROUTE NO.	SECTION	COUNTY	TOTAL SHEETS	SHEET NO.
866	*	LAKE	554	178
FED. ROAD DIST. NO.		ILLINOIS FED. AID PROJECT		

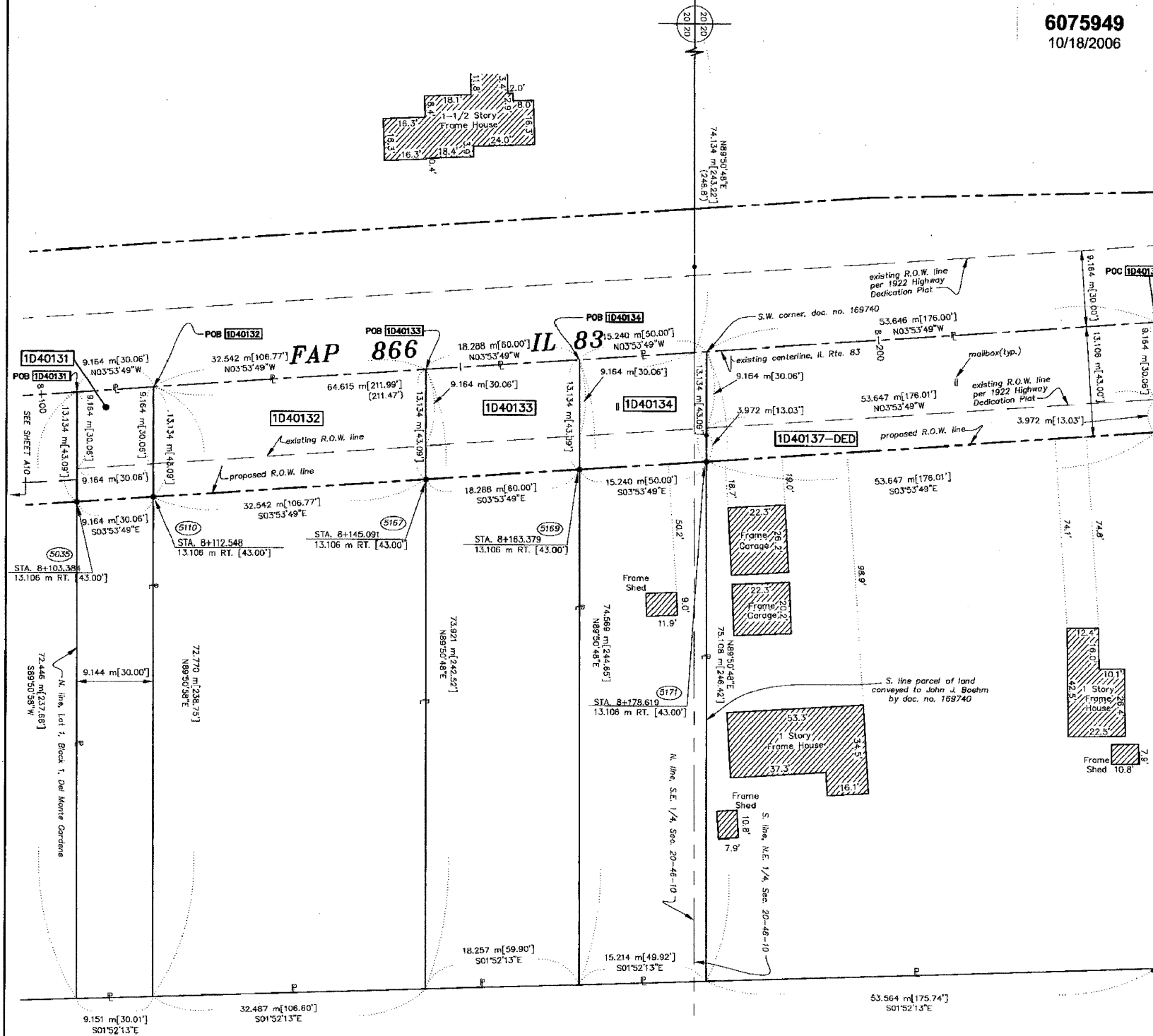
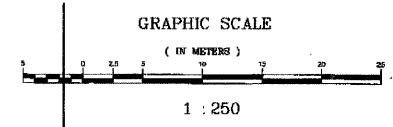
\*(L-2[W,R]6,6A & 6 EXT) WRS-1

PART OF THE NE.1/4 & SE.1/4 OF SEC. 20, T.46 N., R. 10 E. OF THE 3rd P.M., IN LAKE COUNTY, ILLINOIS.

6075949  
10/18/2006

LEGEND

- SECTION CORNER
- QUARTER SECTION CORNER
- SECTION LINE
- QUARTER SECTION LINE
- QUARTER, QUARTER SECTION LINE
- PLATTED LOT LINE
- PROPERTY (DEED) LINE
- APL
- APPARENT PROPERTY LINE
- CENTERLINE
- EXISTING RIGHT OF WAY LINE
- PROPOSED RIGHT OF WAY LINE
- PROPOSED EASEMENT
- MEASURED DIMENSION
- COMPUTED DIMENSION
- RECORD DATA
- EXISTING BUILDING



**Frances Hulik Subdivision**  
recorded June 29, 1959 as document no. 1035450

PARCEL NO.	OWNER	TOTAL HOLDING ACRES	PART TAKEN ACRES	REMAINDER ACRES	PREV. DEED ACRES	EASEMENT ACRES	EASEMENT PURPOSE	PERMANENT TAX INDEX NUMBER	PROPERTY ACQUIRED BY
1D40131	EAGLE PROPERTIES ONE, L.L.C.	0.164	0.030	0.134	0.021	N/A	N/A	02-20-400-040	4675794
1D40132	CARL R. SANDERS, JR.	0.589	0.105	0.484	0.074	N/A	N/A	02-20-400-004	
1D40133	CHARLOTTE MCLELAND	0.335	0.059	0.276	0.041	N/A	N/A	02-20-400-003	4656400
1D40134	THE LOON LAKE ROD & GUN CLUB	0.281	0.049	0.232	0.034	N/A	N/A	02-20-400-002	4656401
1D40137	ARLEEN W. PIENKA & THOMAS H. PIENKA	1.008	DED-0.053	1.008	0.121	N/A	N/A	02-20-200-014	4751302

- NOTES:
- COORDINATES SHOWN ARE ILLINOIS STATE PLANE COORDINATES, EAST ZONE, NAD 83, IN METERS. ADJUSTED TO REPRESENT GROUND COORDINATES. MULTIPLY GROUND COORDINATES BY SCALE FACTOR OF 0.99995413 TO OBTAIN STATE PLANE GRID VALUES.
  - BASES OF BEARINGS IS THE ILLINOIS STATE PLANE COORDINATE SYSTEM, EAST ZONE, NAD 83.
  - SEE SHEETS A30-A36 FOR COORDINATES AND REFERENCE TIES.
  - SHEET 1 IS A COVER SHEET AND IS NOT RECORDED.



STATE OF ILLINOIS }  
COUNTY OF WILL }  
THIS IS TO CERTIFY THAT RONALD F. HODGEN, AN ILLINOIS PROFESSIONAL LAND SURVEYOR, HAS SURVEYED THE PLAT OF HIGHWAYS SHOWN HEREON IN SECTION 20, TOWNSHIP 46 NORTH, RANGE 10 EAST OF THE THIRD PRINCIPAL MERIDIAN, LAKE COUNTY; THAT THE SURVEY IS TRUE AND COMPLETE AS SHOWN TO THE BEST OF MY KNOWLEDGE AND BELIEF; THAT THE PLAT CORRECTLY REPRESENTS SAID SURVEY, THAT ALL MONUMENTS FOUND AND ESTABLISHED ARE OF PERMANENT QUALITY AND OCCUPY THE POSITIONS SHOWN THEREON AND THAT THE MONUMENTS ARE SUFFICIENT TO ENABLE THE SURVEY TO BE RETRACED, MADE FOR THE DEPARTMENT OF TRANSPORTATION, STATE OF ILLINOIS.

DATED AT JOLIET, ILLINOIS THIS 13th DAY OF AUGUST, 2002 A.D.  
*Ronald F. Hodgen*  
ILLINOIS PROFESSIONAL LAND SURVEYOR NO. 2630  
TO ENSURE AUTHENTICITY OF THIS DRAWING, IT MUST BEAR THE COLORED SEAL OF THE DESIGN FIRM OR PROFESSIONAL LICENSEE WHO PREPARED THIS DRAWING.

**RUETTIGER, TONELLI & ASSOCIATES, INC.**  
Land Surveyors/Engineers/Planners/Landscape Architects/G.I.S. Consultants  
2174 OGDEN STREET, SUITE 100, SCHAEFFER, ILLINOIS 60196  
PH: (618) 744-8800 FAX: (618) 744-0001

**PLAT OF HIGHWAYS**  
STATE OF ILLINOIS  
DEPARTMENT OF TRANSPORTATION  
FAP 866 IL 83  
SECTION LAKE COUNTY  
PROJECT JOB NO. R91-048-95  
STATION 8+100 TO STATION 8+250  
SCALE: 1:250 SHEET A11 OF A36

BUREAU OF LAND ACQUISITION  
201 WEST CENTER COURT  
SCHAUMBURG, ILLINOIS 60196

REVISION DATE	REVISION	MADE BY
---------------	----------	---------

N:\11\2006\6075949\101811.dwg Tue Aug 14 12:17:09 2006 T.L.W.