

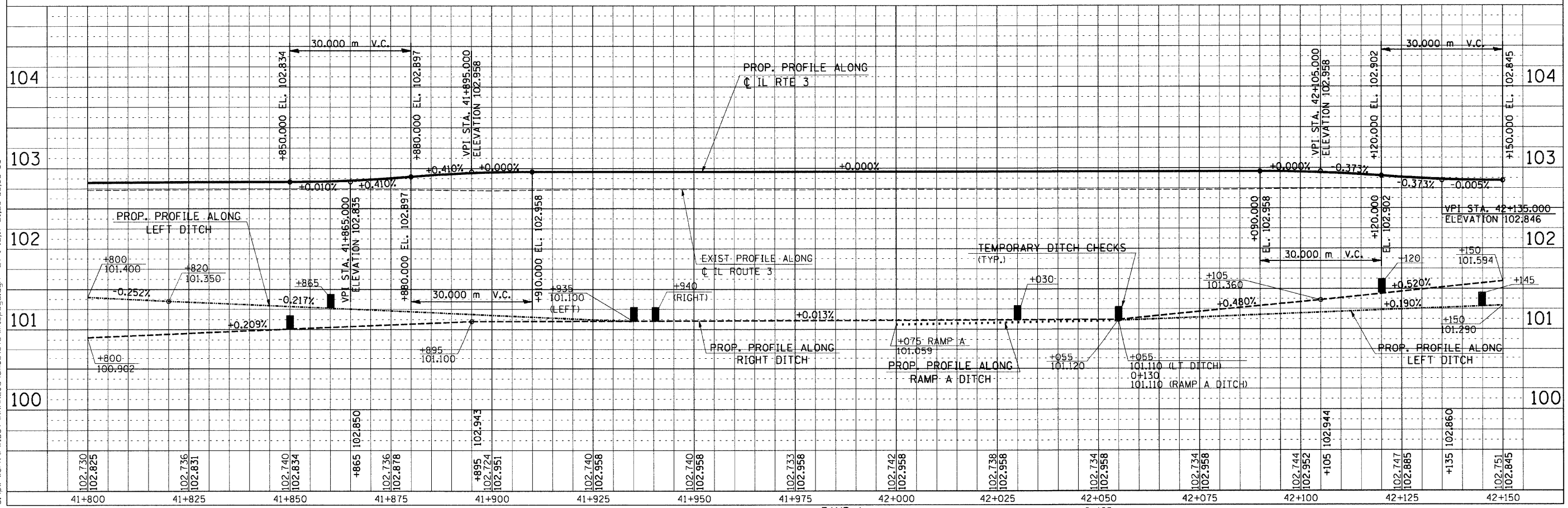
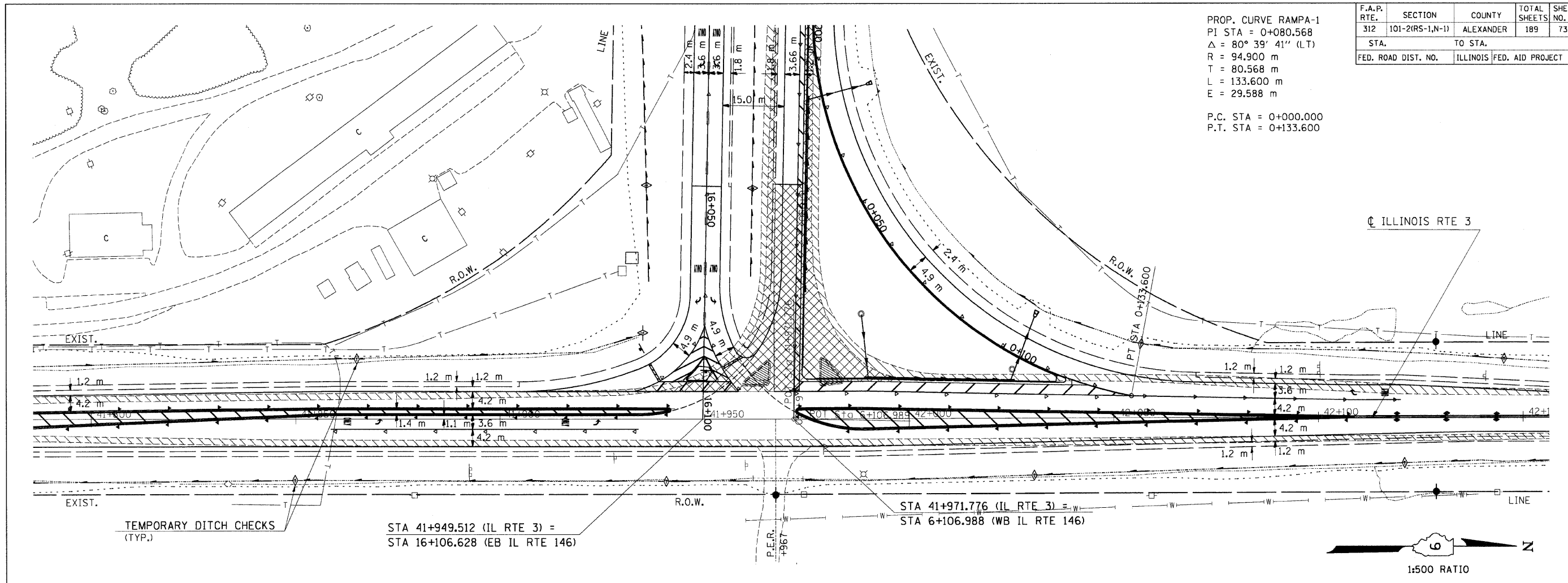
F.A.P. RTE.	SECTION	COUNTY	TOTAL SHEETS	SHEET NO.
312	101-2(RS-1,N-1)	ALEXANDER	189	73
STA.		TO STA.		
FED. ROAD DIST. NO.		ILLINOIS FED. AID PROJECT		

PROP. CURVE RAMPA-1  
 PI STA = 0+080.568  
 $\Delta = 80^\circ 39' 41''$  (LT)  
 R = 94.900 m  
 T = 80.568 m  
 L = 133.600 m  
 E = 29.588 m

P.C. STA = 0+000.000  
 P.T. STA = 0+133.600

BY	DATE

FINAL SURVEY PLOTTED  
 NOTE BOOK TEMPLATE AREAS CHECKED



Tuesday September 15, 2009 @ 7:36:40 AM  
 c:\pwworkspace\pwwork\1001\KRRANZJC\dms43640\m2599p2.dgn LV=2-23,25-57,55-63  
 c:\pwworkspace\pwwork\1001\KRRANZJC\dms43640\m2599p2.dgn LV=2-9,11,14-15,17,19-22,25-43,45-60  
 c:\pwworkspace\pwwork\1001\KRRANZJC\dms43640\m2599p2.dgn LV=1-15,17-21,23-56,58-63

TEMPORARY EROSION CONTROL PLAN ROUTE 3 - STA 41+800 TO STA 42+150