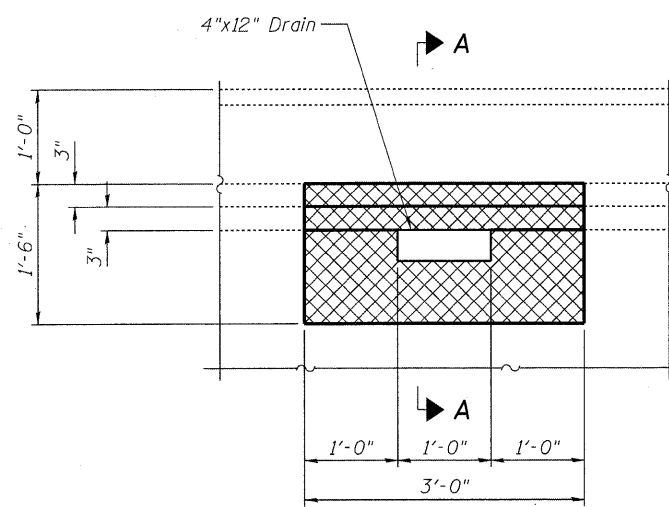
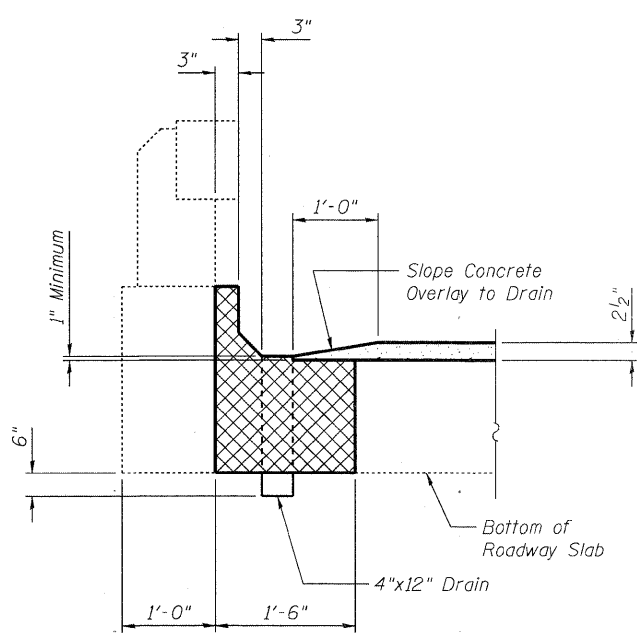


STATE OF ILLINOIS  
DEPARTMENT OF TRANSPORTATION

**LEGEND**



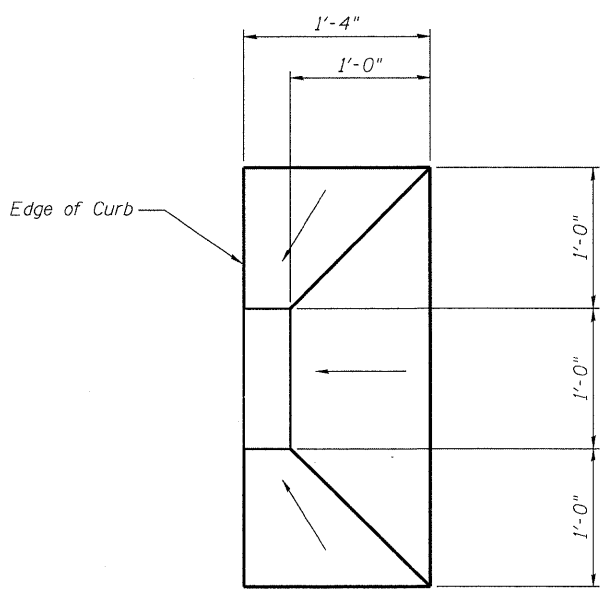
**PART PLAN AT DRAIN**



**SECTION A-A**

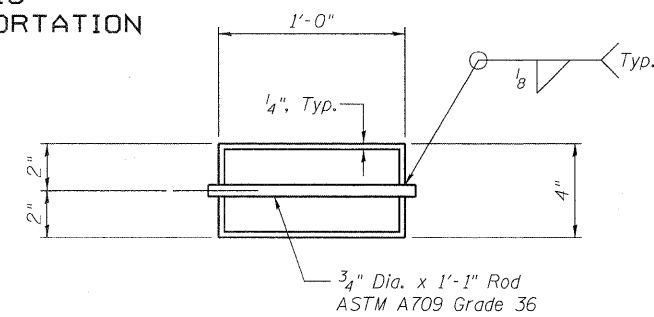
**NOTES**

Care shall be taken during concrete removal for Full Depth Bridge Deck Repair, to preserve, clean and reuse existing reinforcing steel in bridge slab and face of curb.

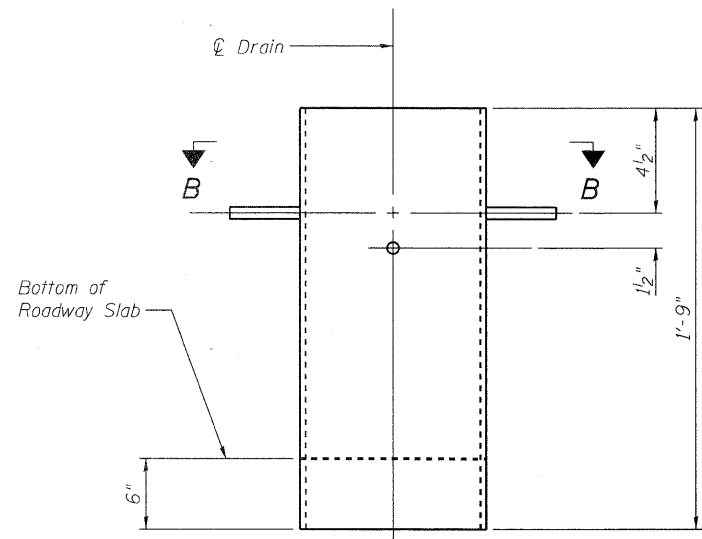


**OVERLAY TREATMENT AT DRAINS**

Taper Overlay from 2 1/2" to 1" at edge of drain.  
See Section A-A.

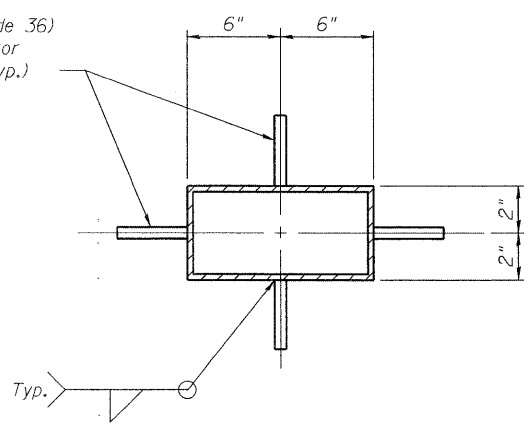


**PLAN OF DRAIN**



**ELEVATION OF DRAIN**

Rod 1/2" Dia. x 3"  
(ASTM A709 Grade 36)  
or Shear Connector  
1/2" Dia. x 3"± (Typ.)



**SECTION B-B**

**DRAIN NOTES**

Slab drains may be fabricated of either 1/4" welded sheets of ASTM A709 Grade 36 steel or from 1/4" structural steel tubing ASTM A500 or A501.

Locate drains in slab by dimensions shown in Part Plan at Drain and Section A-A.

Shift or cut reinforcing steel where necessary to clear drains.

The drains shall be galvanized in accordance with ASTM A123.

Drains shall be paid for complete as Pay Item "Floor Drains."

DESIGNED	RJL
CHECKED	TBS
DRAWN	SCS
CHECKED	TBS

**ABNA**  
9901 S. Western Ave.  
Chicago, IL 60643  
Ph. 773-881-4788  
F: 773.239.3728  
DESIGN FIRM REG. 184.002117

**DECK DRAIN DETAILS**  
**U.S. RTE. 30 OVER WELCH CREEK**  
**SEC. 31B-I-1**  
**KANE COUNTY**  
**STATION 179+33.05**  
**STRUCTURE NO. 045-0034**

SHEET NO.	F.A.P. RTE.	SECTION	COUNTY	TOTAL SHEETS	SHEET NO.
5	573	31B-I-1	KANE	35	12
CONTRACT NO. 60J42					
FED. ROAD DIST. NO. ILLINOIS FED. AID PROJECT					