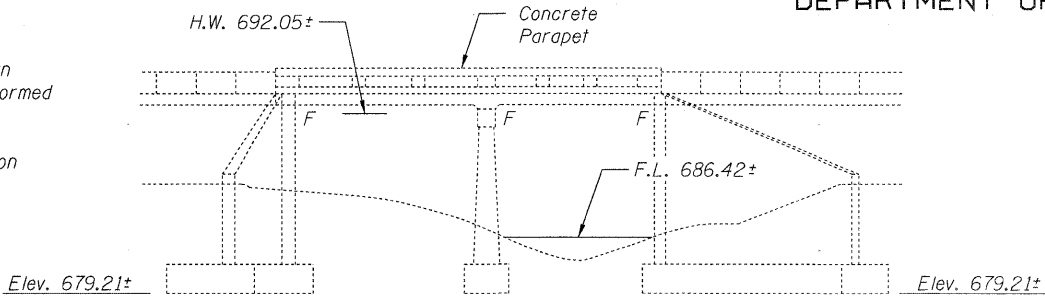


STATE OF ILLINOIS
DEPARTMENT OF TRANSPORTATION

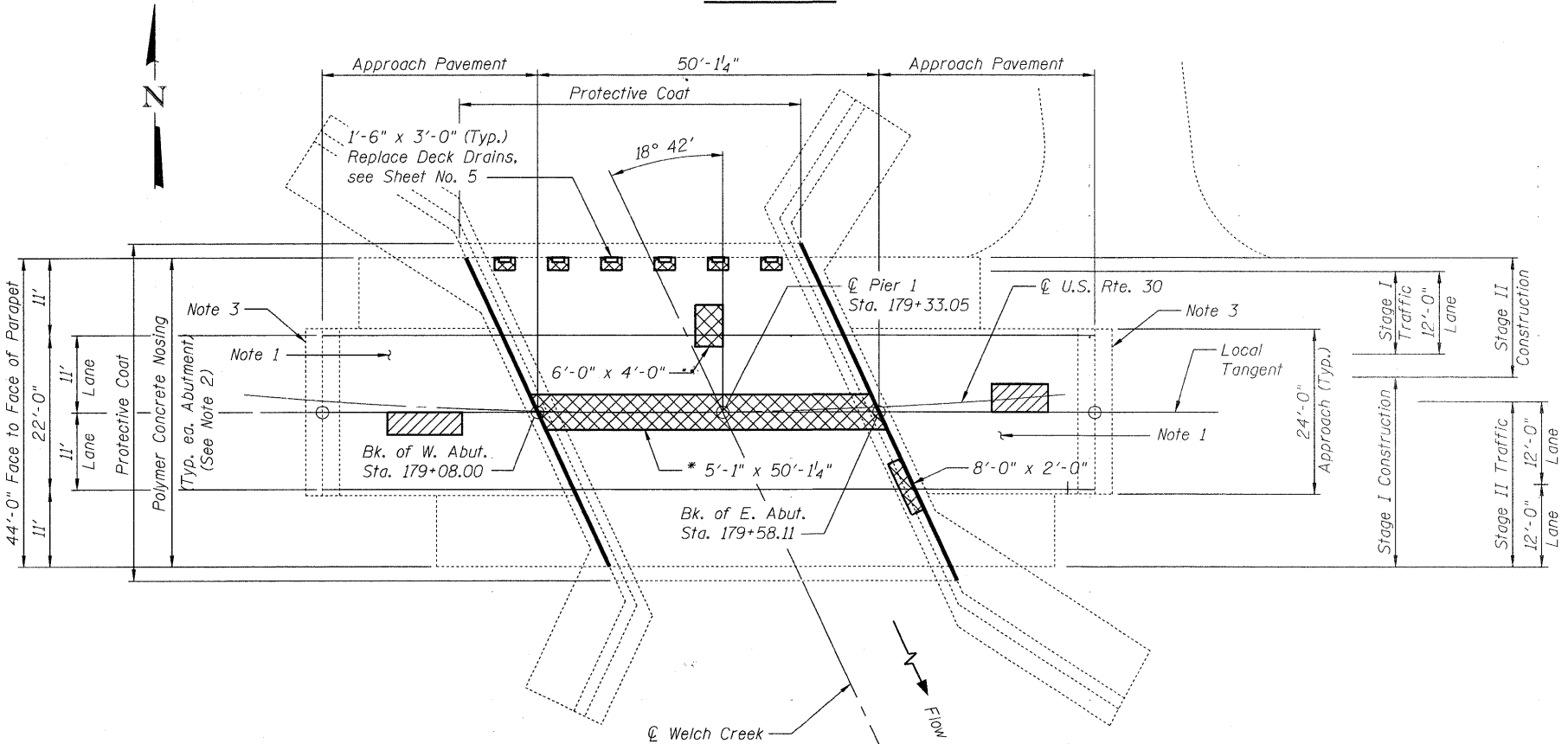
NOTE

The limits and locations of the repairs shown are taken from the most recent survey performed by the District on October 27, 2009.

Existing structure is a two span R.C. Slab on closed abutments.



ELEVATION



PLAN

GENERAL NOTES

Plan dimensions and details relative to existing plans are subject to nominal construction variations. The Contractor shall field verify existing dimensions and details affecting new construction and make necessary approved adjustments prior to construction or ordering of materials. Such variations shall not be cause for additional compensation for a change in scope of the work, however, the Contractor will be paid for the quantity actually furnished at the unit price bid for the work.

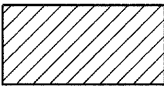
Reinforcement bars shall conform to the requirements of ASTM A 706 Gr 60.

Reinforcement bars designated (E) shall be epoxy coated.

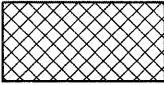
Existing reinforcement bars extending into the removal area shall be cleaned, straightened and incorporated into new construction. Any reinforcement bars that are damaged during concrete removal shall be replaced with an approved bar splicer or anchorage system. Cost included with Concrete Removal.

Areas of deck repairs shown are estimated. The Engineer shall show actual locations of deck repairs on As-built Plans.

LEGEND



Partial Depth
Approach Slab Repair
Locations to be field
determined after HMA
Concrete Removal



Full Depth
Bridge Deck Repair
and Concrete Removal

TOTAL BILL OF MATERIAL

Item	Unit	Total
Bituminous Materials (Prime Coat)	Gal.	19
Hot-Mix Asphalt Surface Removal - Butt Joint	Sq. Yd.	392
Hot-Mix Asphalt Surface Course, Mix "D", N70	Ton	21
Hot-Mix Asphalt Surface Removal, 2"	Sq. Yd.	182
Class D Patches, Type III, 16 inch	Sq. Yd.	32
Concrete Removal	Cu. Yd.	14.0
Floor Drains	Each	6
Concrete Superstructure	Cu. Yd.	11.8
Bridge Deck Grooving	Sq. Yd.	230
Protective Coat	Sq. Yd.	245
Reinforcement Bars, Epoxy Coated	Pound	3670
Polymer Concrete	Cu. Ft.	4
Bridge Deck Latex Concrete Overlay 2 1/2"	Sq. Yd.	245
Structural Repair of Concrete (Depth Equal to or Less than 5 inches)	Sq. Ft.	208
Approach Slab Repair (Partial Depth)	Sq. Yd.	3
Bridge Deck Hydro-Scarification 2 1/2"	Sq. Yd.	245
Deck Slab Repair (Full Depth, Type I)	Sq. Yd.	8

* Removal shall be paid for as Concrete Removal.
New concrete shall be paid for as Concrete Superstructure.

INDEX OF SHEETS

- General Plan
- Construction Staging
- Substructure Repairs
- Slab Repair Details
- Deck Drain Details
- Joint Details

GENERAL PLAN

U.S. RTE. 30 OVER WELCH CREEK

SEC. 31B-I-1

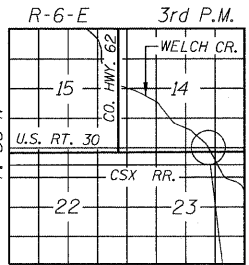
KANE COUNTY

STATION 179+33.05

STRUCTURE NO. 045-0034

NOTES

- Remove existing HMA concrete overlay on East and West approaches and replace with new hot-mix asphalt overlay to proposed elevation of bridge deck overlay. See Detail, Sheet No. 6.
- Install Polymer Concrete Nosing at East and West Abutments as shown. See Detail, Sheet No. 6.
- Remove Existing Concrete above Existing Sleeper Slab / Grade Beam and Replace with Class D Patches, Type III, 16 inch.



LOCATION SKETCH

DESIGNED	RJL
CHECKED	TBS
DRAWN	SCS
CHECKED	TBS



4/29/2010



ABNA

9901 S. Western Ave.
Chicago, IL 60643
Ph. 773-881-4788
F: 773.239.3728

DESIGN FIRM REG. 184.002117

SHEET NO.	F.A.P. RTE.	SECTION	COUNTY	TOTAL SHEETS	SHEET NO.
6 SHEETS	573	31B-I-1	KANE	35	8
CONTRACT NO. 60J42					
FED. ROAD DIST. NO. ILLINOIS FED. AID PROJECT					