

H:\DOT\2009-246 PTB 153 Item 2\045-0034\045-0034-01 cover sheet.dgn 3/8/2010 12:52:45 PM

STATE OF ILLINOIS
DEPARTMENT OF TRANSPORTATION
DIVISION OF HIGHWAYS

PROPOSED
HIGHWAY PLANS

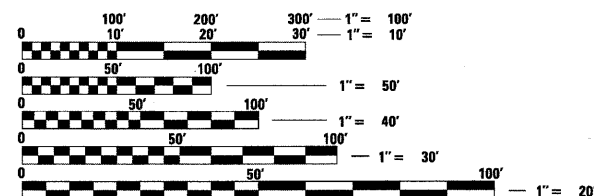
FAP ROUTE 573 (ROUTE 30)
OVER WELCH CREEK
SECTION: 31B-I-1
BRIDGE DECK OVERLAY
STRUCTURE NO. 045-0034
KANE COUNTY

C-91-232-10

FOR INDEX OF SHEETS, SEE SHEET NO. 2

PROJECT LOCATED IN KANE COUNTY
IN THE VILLAGE OF BIG ROCK, IL

ADT = 12,200 (2009)
SPEED LIMIT = 55 MPH



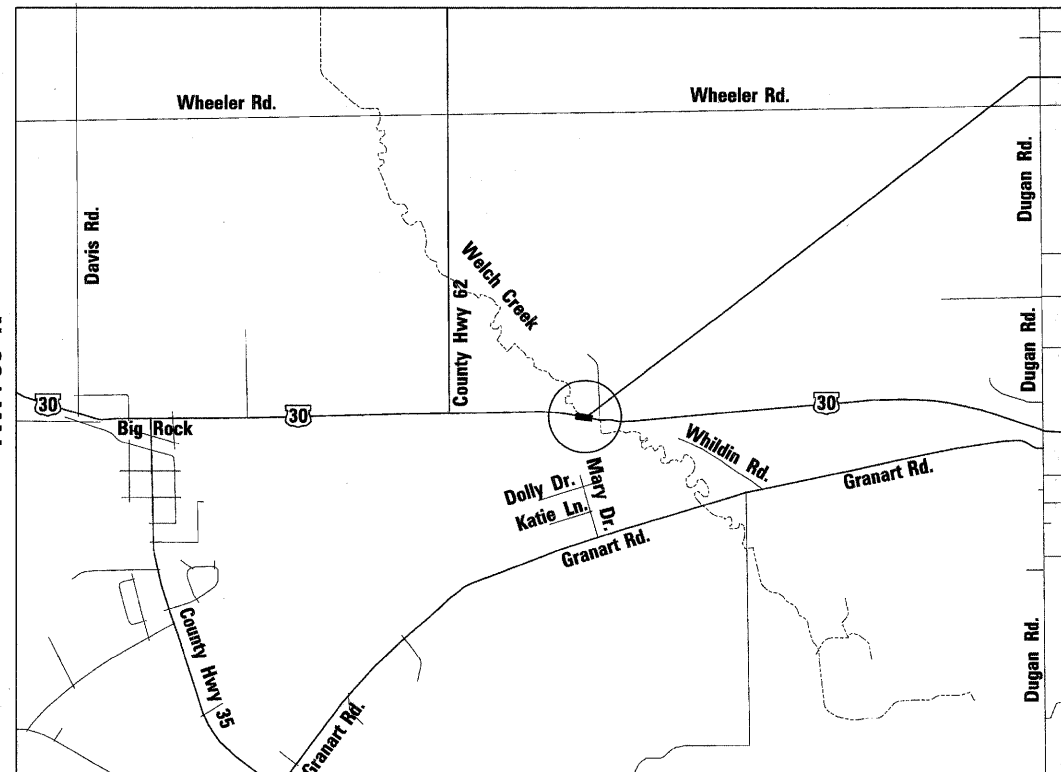
FULL SIZE PLANS HAVE BEEN PREPARED USING STANDARD
ENGINEERING SCALES. REDUCED SIZED PLANS WILL NOT
CONFORM TO STANDARD SCALES. IN MAKING MEASUREMENTS
ON REDUCED PLANS, THE ABOVE SCALES MAY BE USED.

J.U.L.I.E.
JOINT UTILITY LOCATION INFORMATION FOR EXCAVATION
1-800-892-0123
OR 811



Robert J. Loehr
ROBERT J. LOEHR, S.E., P.E.
DATE: 03/08/2010
EXP. 11/30/2010
SHEETS: 8-13

TWP. 38 N



BIG ROCK TOWNSHIP

GROSS LENGTH = 110.10 FT. = 0.021 MILE
NET LENGTH = 110.10 FT. = 0.021 MILE

PROPOSED
IMPROVEMENT



Thomas P. Paolicchi
THOMAS P. PAOLICCHI, P.E.
DATE: 03/08/2010
EXP. 11/30/2011
SHEETS: 1-7

F.A.P. RTE.	SECTION	COUNTY	TOTAL SHEETS	SHEET NO.
573	31B-I-1	KANE	35	1
ILLINOIS		CONTRACT NO. 60J42		

D-91-232-10



LOCATION OF SECTION INDICATED THUS: —■—

STATE OF ILLINOIS
DEPARTMENT OF TRANSPORTATION
DIVISION OF HIGHWAYS

SUBMITTED MARCH 12 2010

Diana M. O'Keefe
DEPUTY DIRECTOR OF HIGHWAYS, REGION ENGINEER

May 7 2010
Scott E. Stitt, P.E.
acting ENGINEER OF DESIGN AND ENVIRONMENT

May 7 2010
Christine M. Reed
DIRECTOR OF HIGHWAYS, CHIEF ENGINEER

PROJECT MANAGER: HELEN PAZON (847) 705-4523

CONTRACT NO. 60J42



PRINTED BY THE AUTHORITY
OF THE STATE OF ILLINOIS