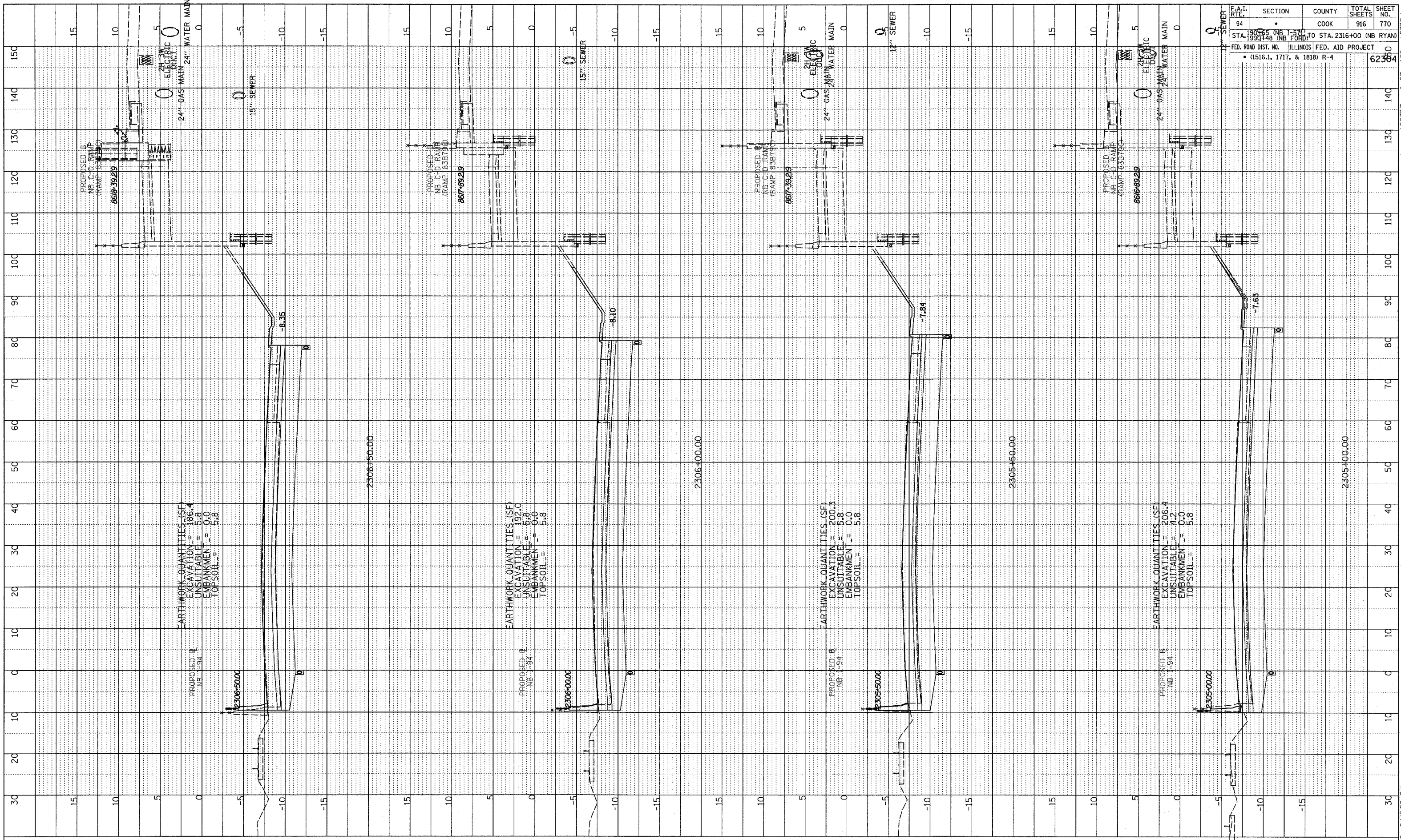
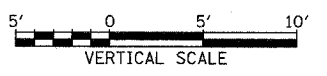
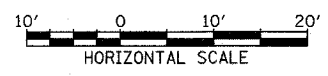


PROFILE SURVEYED BY _____ DATE _____
 PLOTTED BY _____
 NOTE BOOK NO. _____
 STRUCTURE NOTATION CHKD _____



F.A.I. RTE.	SECTION	COUNTY	TOTAL SHEETS	SHEET NO.
94	1900+05 (NB I-94) TO STA. 2316+00 (NB RYAN)	COOK	916	770
STA. 1900+05 (NB I-94) TO STA. 2316+00 (NB RYAN) FED. ROAD DIST. NO. ILLINOIS FED. AID PROJECT • (1516.1, 1717, & 1818) R-4				
				62384

TYLIN INTERNATIONAL



NORTHBOUND I-94 (DAN RYAN EXPWY)
 STA. 2305+00 TO STA. 2306+50

P:\0237\3\road\20\mapx20\sest\9379.dgn 03/03/2006 04:16:52 PM