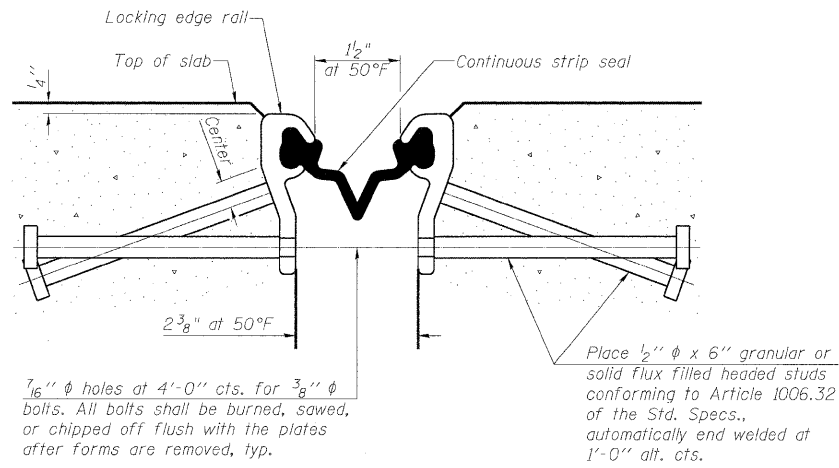
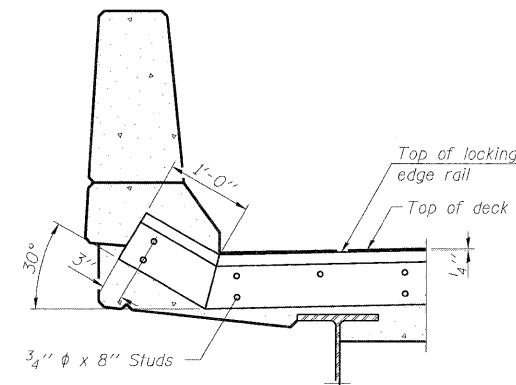


STATE OF ILLINOIS  
DEPARTMENT OF TRANSPORTATION

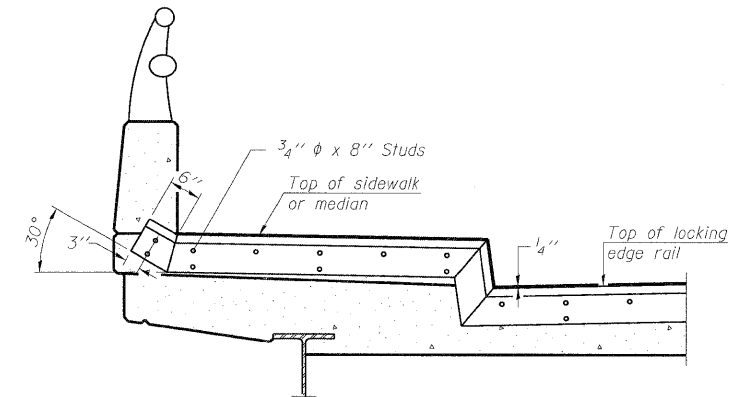


**SECTION THRU  
RAIL JOINT**

\*Omit weld at seal opening.



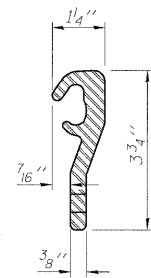
**AT PARAPET**  
See Section A-A for end treatment of skews > 30°.



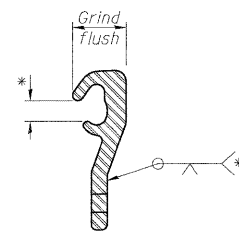
**AT SIDEWALK OR MEDIAN**  
Shorter plates with a single row of studs at 12\"/>

7/16\"/>

Place 1/2\"/>



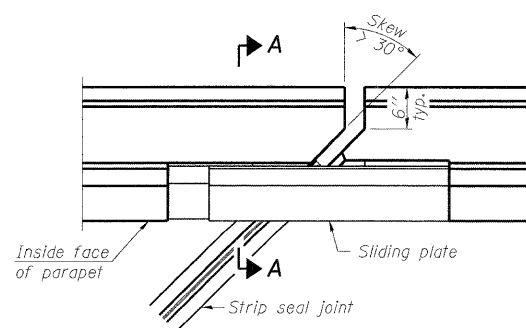
**LOCKING EDGE RAIL**



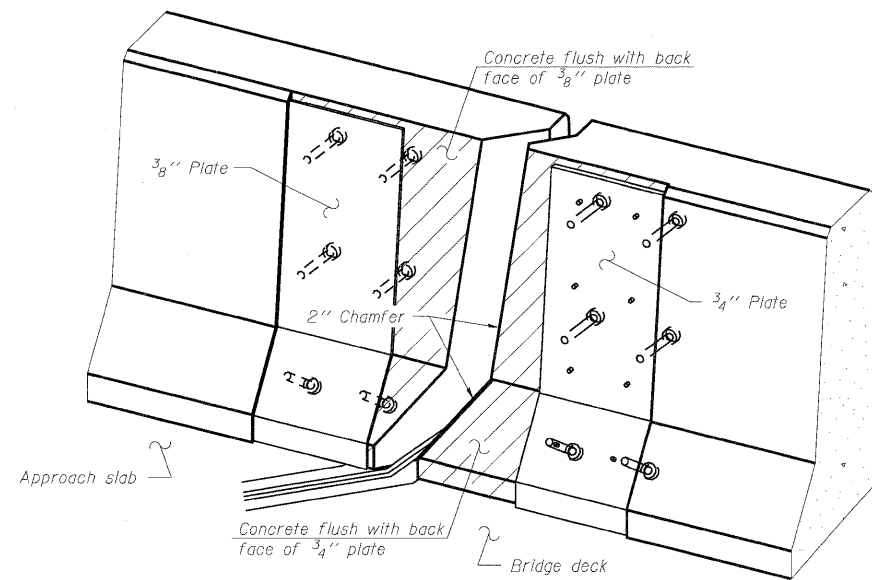
**LOCKING EDGE RAIL SPLICE**

**Notes:**  
The strip seal shall be made continuous and shall have a minimum thickness of 1/4\"/>

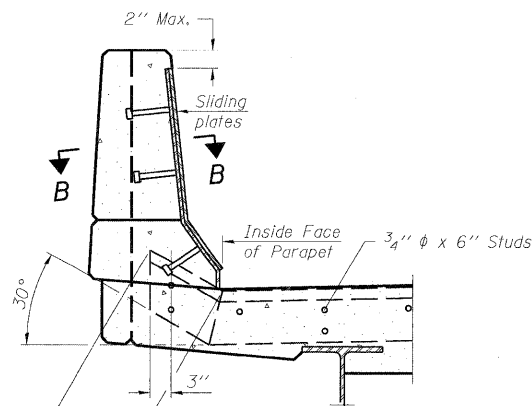
**LOCKING EDGE RAILS**



**PLAN**

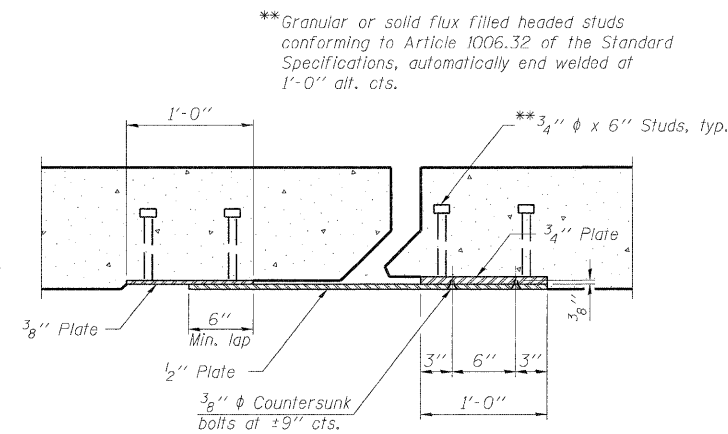


**TRIMETRIC VIEW**  
(Showing back plates only)



**SECTION A-A**

**POINT BLOCK DETAILS**  
(for skews > 30°)



**SECTION B-B**

\*\*Granular or solid flux filled headed studs conforming to Article 1006.32 of the Standard Specifications, automatically end welded at 1'-0\"/>

\*\*3/4\"/>

**alfred benesch & company**  
Engineers • Surveyors • Planners  
205 North Michigan Avenue, Suite 2400  
Chicago, Illinois 60601  
312-565-0450 Job No. 10032.13

**benesch**

**TYPICAL END TREATMENTS**

**Notes:**  
The strip seal shall be made continuous and shall have a minimum thickness of 1/4\"/>

**BILL OF MATERIAL**

| Item                       | Unit | Total |
|----------------------------|------|-------|
| Preformed Joint Strip Seal | Foot | 182.0 |

**PREFORMED JOINT STRIP SEAL  
STRUCTURE NO. 016-0536**

|            |     |
|------------|-----|
| DESIGNED - | MFB |
| CHECKED -  | KWS |
| DRAWN -    | RMG |
| CHECKED -  | KWS |

|                          |             |            |                  |                    |           |
|--------------------------|-------------|------------|------------------|--------------------|-----------|
| SHEET NO. 7<br>17 SHEETS | F.A.I. RTE. | SECTION    | COUNTY           | TOTAL SHEETS       | SHEET NO. |
|                          | 94          | 1010.1-I-2 | COOK             | 37                 | 19        |
| FED. ROAD DIST. NO.      |             |            | ILLINOIS         | CONTRACT NO. 60J30 |           |
|                          |             |            | FED. AID PROJECT |                    |           |