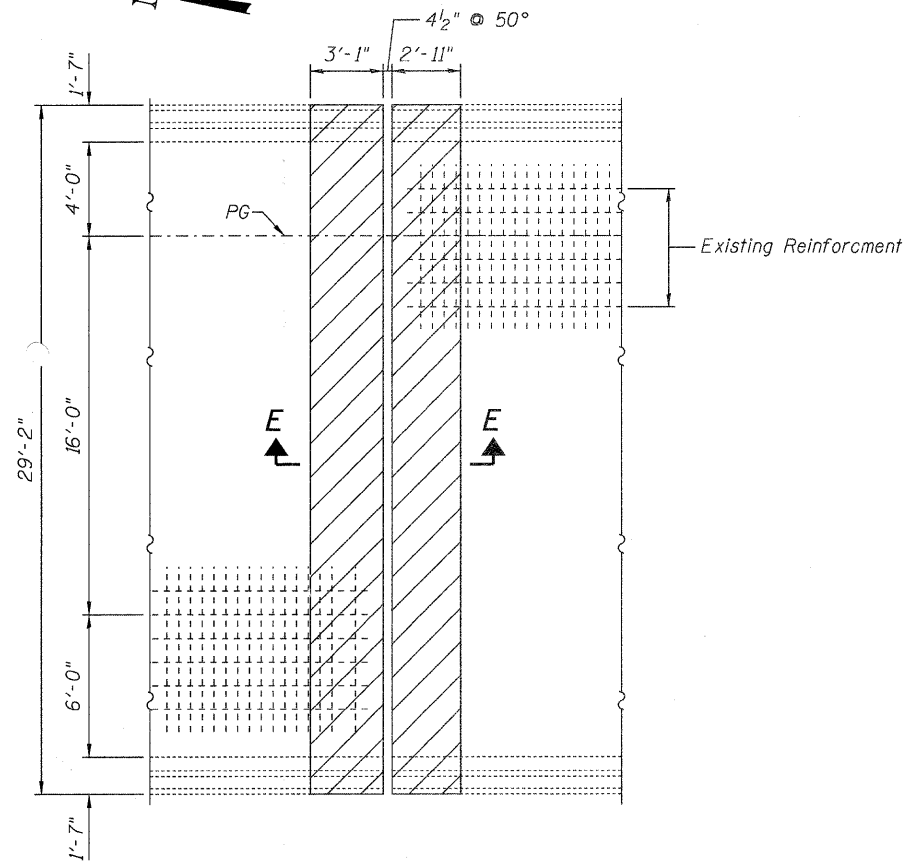
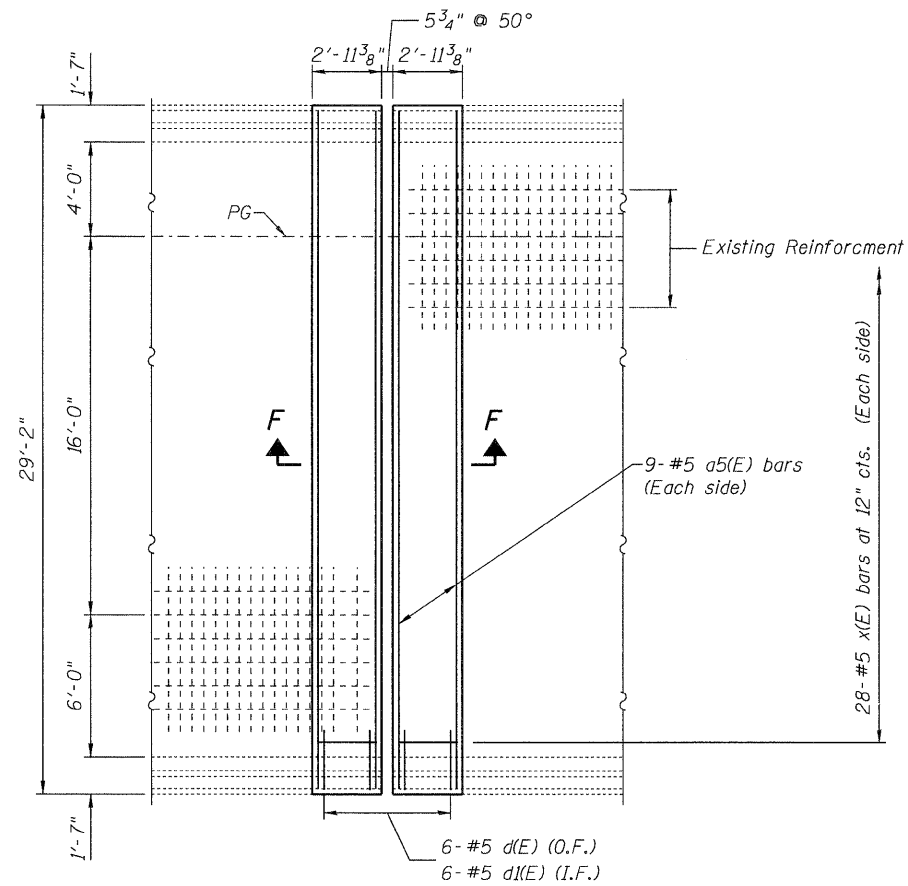


STATE OF ILLINOIS
DEPARTMENT OF TRANSPORTATION



CONCRETE REMOVAL



CONCRETE REPLACEMENT

The ϕ of existing joint is offset 1" south from the ϕ of pier, since the north bearings and north beam end extensions are longer. The reconstructed joint will be centered on the pier.

See sheet 5 of 16 for Section E-E.

See sheet 11 of 16 for Section F-F.

BILL OF MATERIAL

Bar	No.	Size	Length	Shape
a5(E)	18	#5	27'-2"	—
d(E)	12	#5	5'-8"	L
d(E)	12	#5	3'-11"	L
x(E)	56	#5	2'-7"	C
Mechanical Splicers	Each			56
Reinforcement Bars, Epoxy Coated	Pound			780
Concrete Superstructure	Cu. Yds.			6.1
Concrete Removal	Cu. Yds.			6.7

Bars indicated thus 4x2 -#5 etc. indicates 4 line of bars with 2 lengths per line.

**RAMP F
PIER 3 CONCRETE REPLACEMENT
082-0217 & 0218**

DESIGNED	J. Uehle
CHECKED	A. Halloway
DRAWN	J. Uehle
CHECKED	A. Halloway

EXAMINED	<i>[Signature]</i> November 5, 2010 ENGINEER OF STRUCTURAL SERVICES
PASSED	<i>[Signature]</i> ENGINEER OF BRIDGES AND STRUCTURES

SHEET NO. 6 16 SHEETS	F.A.] RTE.	SECTION	COUNTY	TOTAL SHEETS	SHEET NO.
	255	82-7HB-1	ST. CLAIR	43	13
			CONTRACT NO. 76C33		
ILLINOIS FED. AID PROJECT					