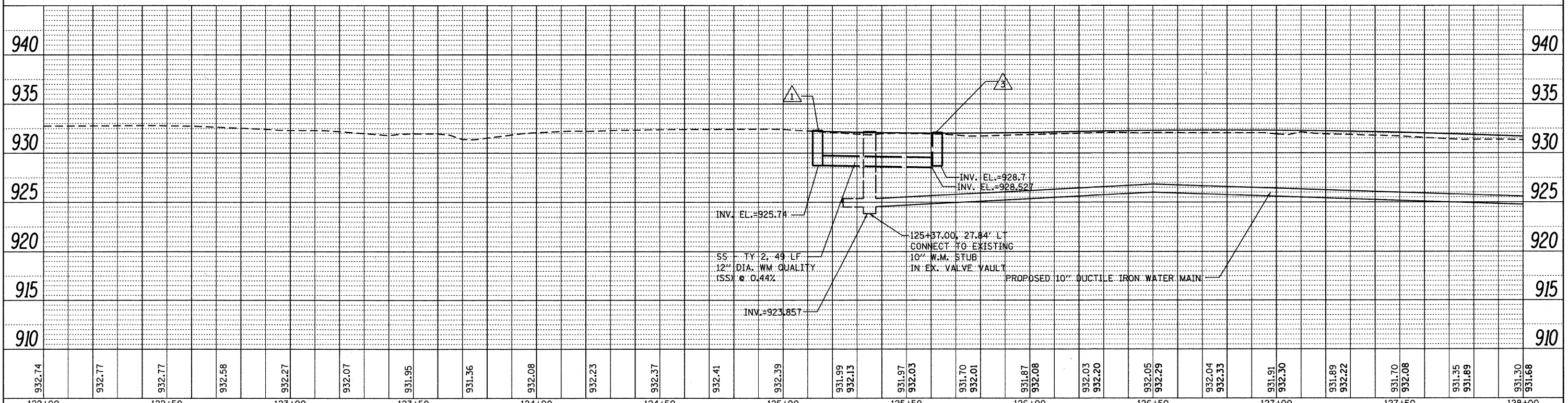
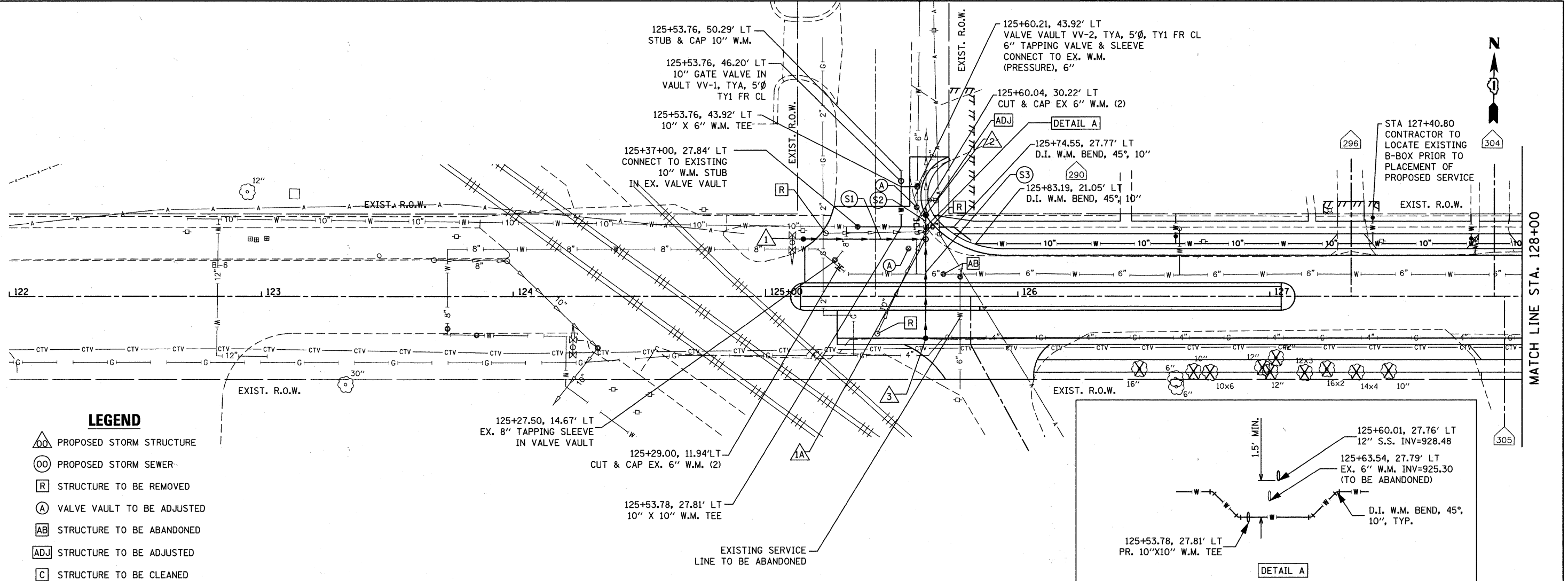


DATE	
BY	
REVIEWED	
ALIGNMENT CHECKED	
NOTE BOOK NO.	
FILE NAME	

DATE	
BY	
REVIEWED	
GRADES CHECKED	
NOTE BOOK NO.	
STRUCTURE NOTATIONS CHECKED	



FILE NAME =	USER NAME = gellwanger	DESIGNED - GJE	REVISED -
F:\789-006 East Crystal Lake Ave SEGMENT	\CADD_Sheets\0163524-sht-drain.dgn	DRAWN - GJE	REVISED -
	PLOT SCALE = 20.0000' / IN.	CHECKED - JP	REVISED -
	PLOT DATE = 2/17/2011	DATE - 02/7/2011	REVISED -

**STATE OF ILLINOIS
DEPARTMENT OF TRANSPORTATION**

**EAST CRYSTAL LAKE AVENUE
DRAINAGE AND UTILITIES**
HORIZ. 1"=20'
SCALE: VERT. 1"=5' SHEET NO. 26 OF 64 SHEETS STA. 125+10 TO STA. 128+00

F.A.U. RTE. 116	SECTION 06-00104-01-WR	COUNTY McHENRY	TOTAL SHEETS 64	SHEET NO. 26
CONTRACT NO. 63524			ILLINOIS FED. AID PROJECT	