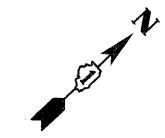


- NOTES:**
- SEE DRAWING GE-1 FOR ELECTRICAL SYMBOL LIST AND ABBREVIATIONS.
  - SEE DRAWING S-3 FOR HIGH MAST LIGHT TOWER FOUNDATION TABLE.

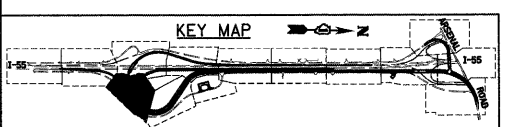
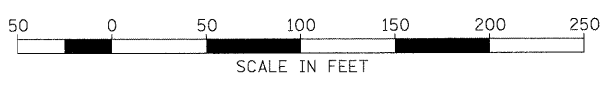
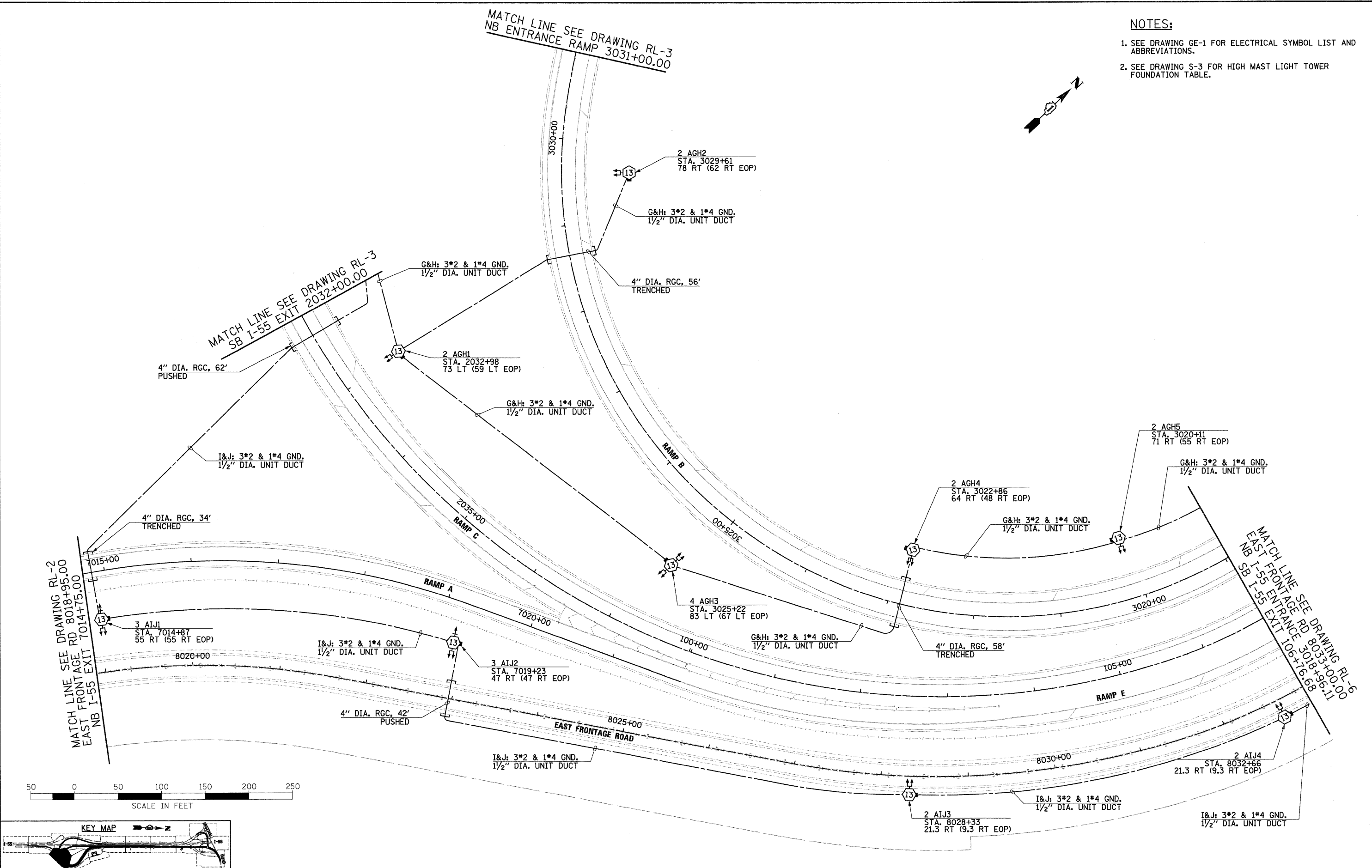


MATCH LINE SEE DRAWING RL-3  
NB ENTRANCE RAMP 3031+00.00

MATCH LINE SEE DRAWING RL-3  
SB I-55 EXIT 2032+00.00

MATCH LINE SEE DRAWING RL-2  
EAST FRONTAGE RD 8018+95.00  
NB I-55 EXIT 7014+75.00

MATCH LINE SEE DRAWING RL-6  
EAST FRONTAGE RD 8035+00.00  
SB I-55 ENTRANCE RAMP 106+16.68



McDonough Associates Inc.  
Engineers / Architects  
130 East Randolph Street, Chicago, Illinois 60601

FILE NAME = D:\SHP12-SHT-RL-4.dgn	USER NAME = TKLuegl	DESIGNED - JLW	REVISED -
		DRAWN - CJM	REVISED -
	PLOT SCALE = 1:50	CHECKED - KMY	REVISED -
	PLOT DATE = 2/3/2011	DATE - 2/4/11	REVISED -

**STATE OF ILLINOIS  
DEPARTMENT OF TRANSPORTATION**

**I-55 AT ARSENAL ROAD  
PROPOSED ROADWAY LIGHTING PLAN FINAL CONDITIONS**

SCALE: 1" = 50'    SHEET NO. 4 OF 14 SHEETS    STA.    TO STA.

F.A.I. RTE. 55	SECTION 99-2HB-2B-1	COUNTY WILL	TOTAL SHEETS 756	SHEET NO. 393
CONTRACT NO. 60F12				
FED. ROAD DIST. NO. 1 ILLINOIS FED. AID PROJECT				