

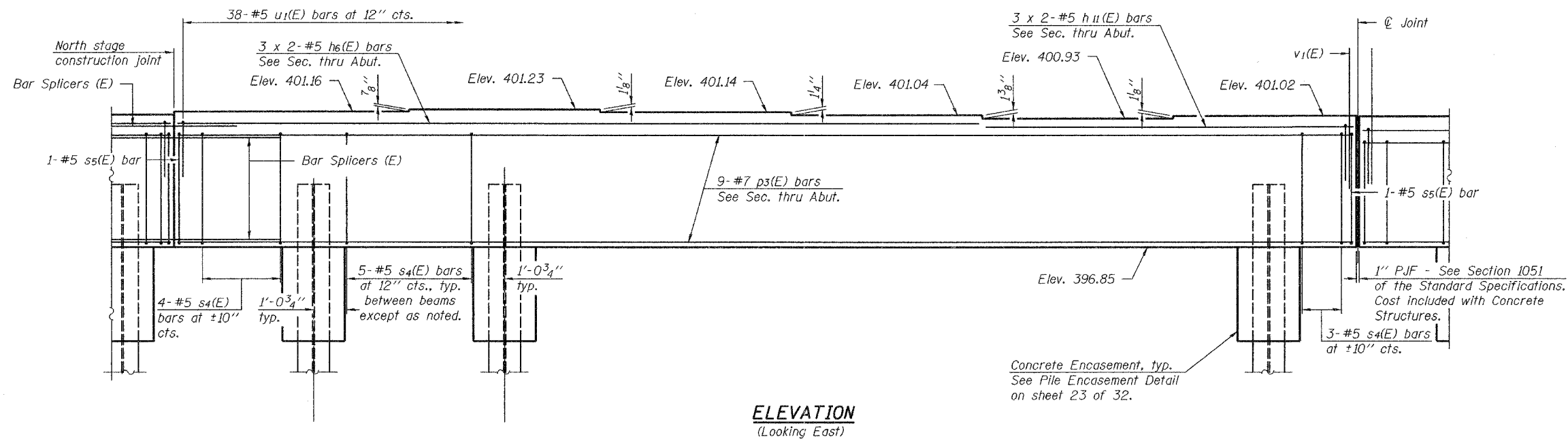
STATE OF ILLINOIS
DEPARTMENT OF TRANSPORTATION

ROUTE NO. F.A.P. 331	SECTION (12-1) B-1	COUNTY JACKSON	SHEET NO. 249	SHEET NO. 24 32 SHEETS
FED. ROAD DIST. NO. 7		ILLINOIS	FED. AID PROJECT	

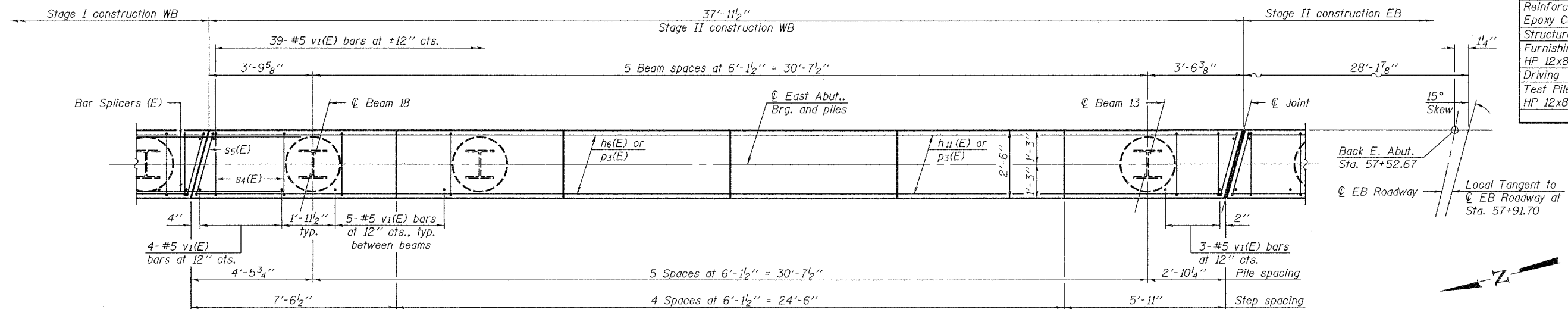
Contract #98827

BILL OF MATERIAL

Bar	No.	Size	Length	Shape
h(E)	6	#5	10'-4"	
h ₁ (E)	32	#5	11'-0"	
h ₂ (E)	6	#5	6'-9"	
h ₃ (E)	32	#5	11'-6"	
h ₄ (E)	6	#5	21'-3"	
h ₅ (E)	6	#5	11'-8"	
h ₆ (E)	6	#5	14'-0"	
h ₁₁ (E)	6	#5	7'-5"	
p(E)	9	#7	37'-7"	
p ₁ (E)	9	#7	29'-4"	
p ₂ (E)	18	#7	22'-0"	
p ₃ (E)	9	#7	37'-8"	
s ₂ (E)	73	#5	11'-7"	□
s ₃ (E)	4	#5	11'-9"	□
s ₄ (E)	57	#5	11'-11"	□
s ₅ (E)	4	#5	12'-1"	□
u(E)	8	#6	9'-5"	∟
u ₁ (E)	109	#5	4'-8"	□
u ₂ (E)	21	#5	5'-8"	□
v ₁ (E)	280	#5	4'-4"	
v ₂ (E)	9	#5	11'-0"	
v ₃ (E)	10	#5	11'-1"	
Concrete Structures		Cu. Yd.	58.7	
Reinforcement Bars, Epoxy Coated		Pound	7870	
Structure Excavation		Cu. Yd.	269	
Furnishing Steel Piles HP 12x84		Foot	3047	
Driving Piles		Foot	3047	
Test Pile Steel HP 12x84		Each	1	



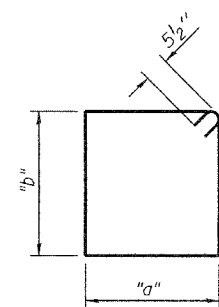
ELEVATION
(Looking East)



PLAN

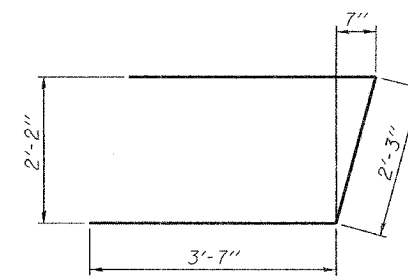
PILE DATA

Type: HP 12x84
Nominal Required Bearing: 665 tons
Nominal Design Capacity: 92.9 tons
Est. Length: 138.5 ft.
No. Required: 22 + 1 Test pile

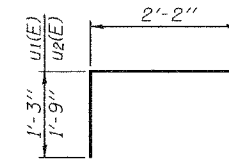


Bar	"a"	"b"
s ₂ (E)	2'-2"	3'-2"
s ₃ (E)	2'-3"	3'-2"
s ₄ (E)	2'-2"	3'-4"
s ₅ (E)	2'-3"	3'-4"

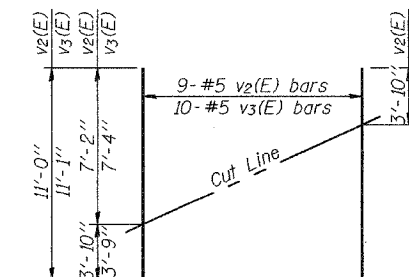
BARS s₂(E) thru s₅(E)



BAR u(E)



BARS u₁(E) and u₂(E)



FIELD CUTTING DIAGRAM

Order v₂(E) and v₃(E) full length. Cut as shown and use remainder of bars in opposite face.

MINIMUM BAR LAP
#5 bar = 2'-3"

EAST ABUTMENT (STAGE II-WB)
F.A.P. ROUTE 331 - SEC. (12-1)B-1
JACKSON COUNTY
STATION 57+91.70
STRUCTURE NO. 039-0071

DESIGNED	Curt M. Evoy
CHECKED	Rebecca L. Mitchell
DRAWN	Michael B. Mossman
CHECKED	C.M.E. / R.L.M.

March 1, 2006
EXAMINED *Thomas J. Domagala*
PASSED *Ralph E. Anderson*
ENGINEER OF BRIDGE DESIGN
ENGINEER OF BRIDGES AND STRUCTURES