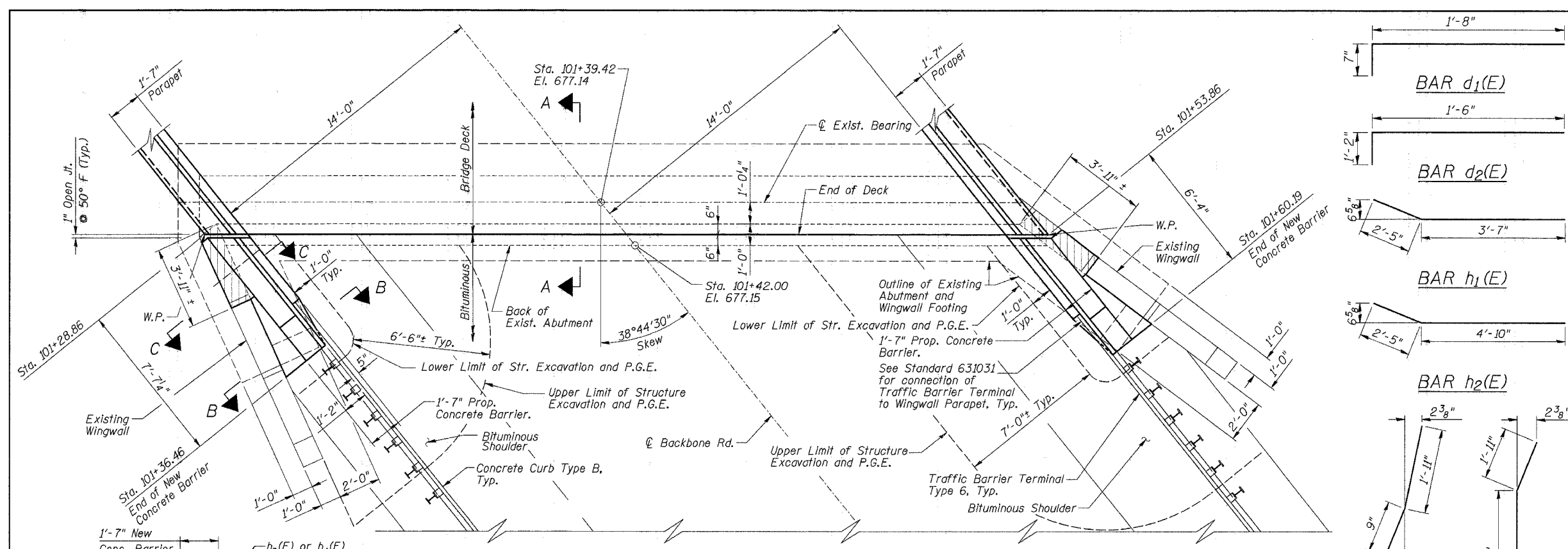


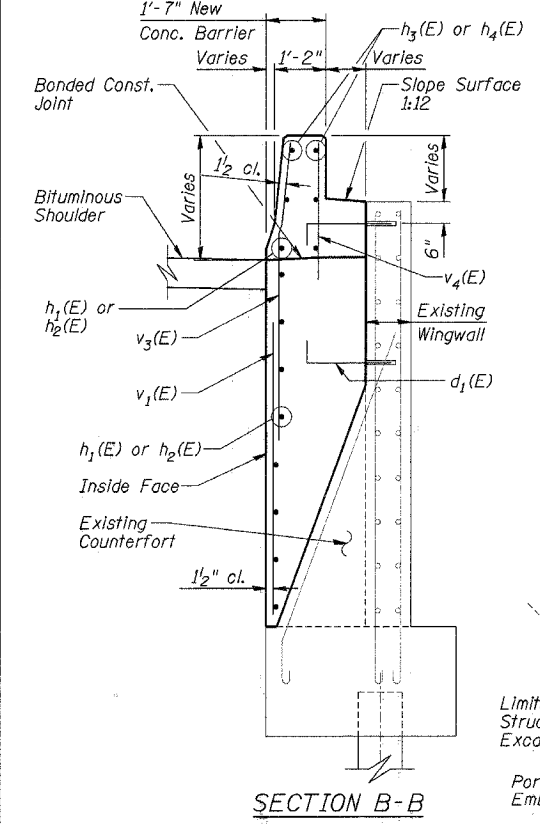
### EAST ABUTMENT BILL OF MATERIAL

Bar	No.	Size	Length	Shape
$d_1(E)$	36	#5	2'-3"	—
$d_2(E)$	10	#5	2'-8"	—
$h_1(E)$	9	#4	6'-0"	—
$h_2(E)$	9	#4	7'-3"	—
$h_3(E)$	5	#4	6'-0"	—
$h_4(E)$	5	#4	7'-3"	—
$v_1(E)$	16	#6	6'-0"	—
$v_2(E)$	10	#6	7'-2"	—
$v_3(E)$	6	#6	7'-1"	—
$v_4(E)$	16	#6	5'-3"	—
Porous Granular Embankment		Cu. Yd.	22	
Concrete Removal		Cu. Yd.	1.3	
Structure Excavation		Cu. Yd.	27	
Concrete Structures		Cu. Yd.	8	
Reinforcement Bars, Epoxy Coated		Pound	680	

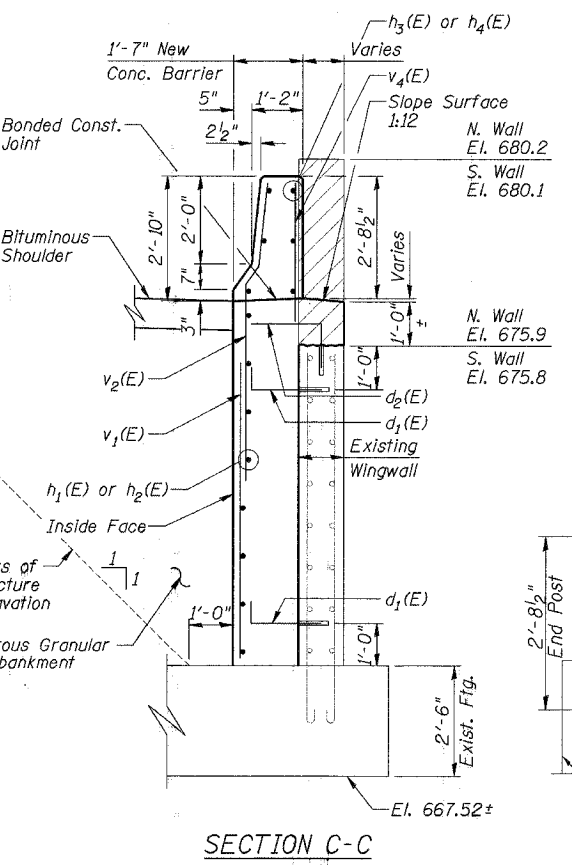
Reinforcement bars designated (E) shall be epoxy coated.



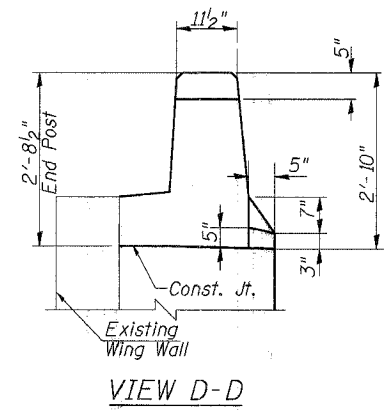
EAST ABUTMENT PLAN



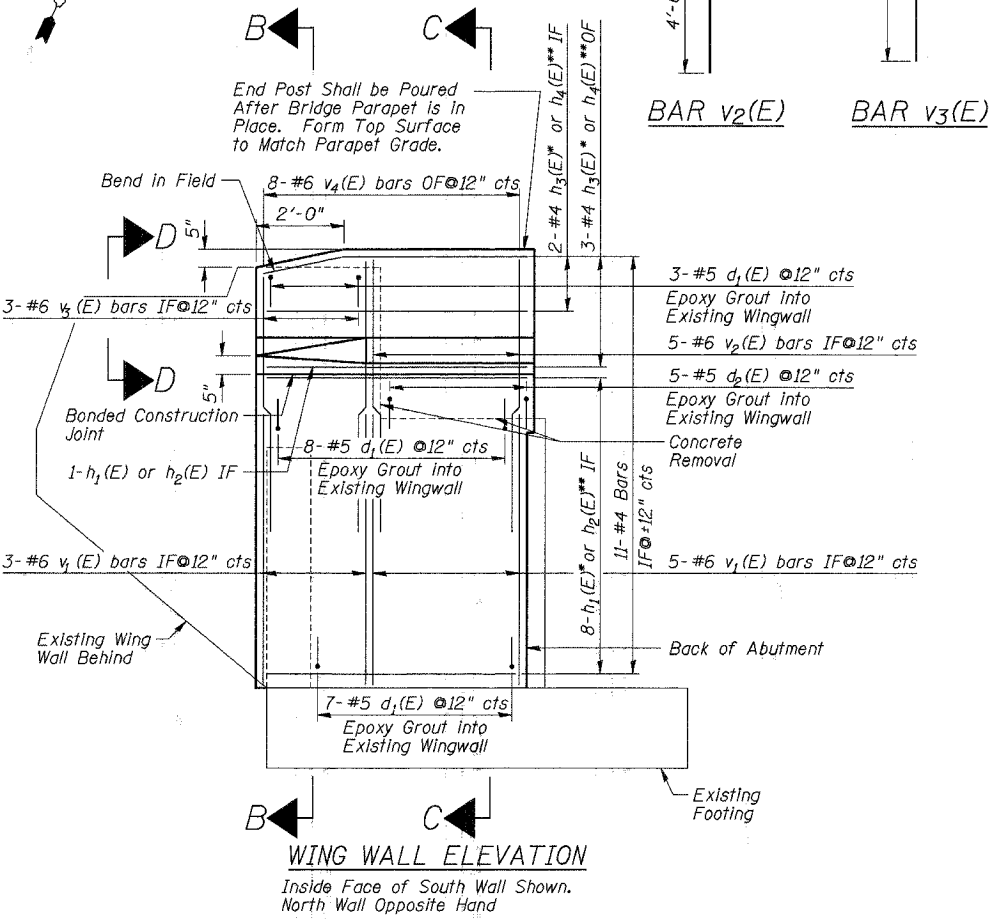
SECTION B-B



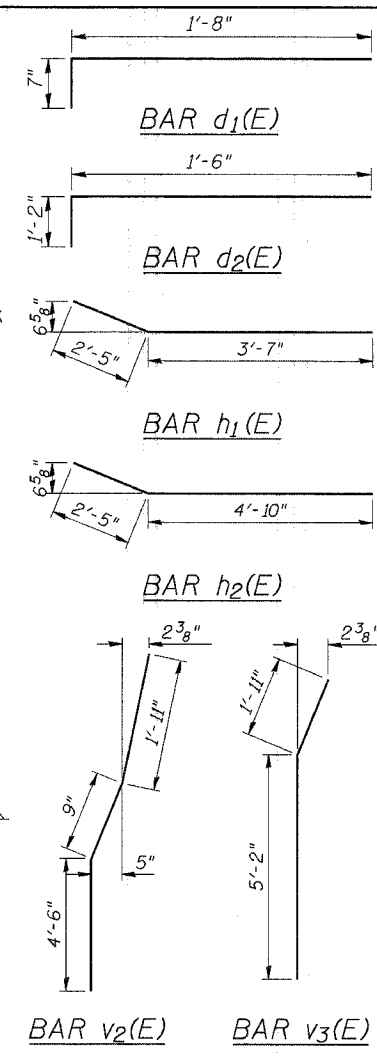
SECTION C-C



VIEW D-D



WING WALL ELEVATION



- Notes:
- Epoxy Grout  $d_1(E)$  and  $d_2(E)$  bars in 7/8" Diameter x 8" Minimum Drilled Holes According to Sec. 584 of Standard Specifications.
  - IF = Inside Face  
OF = Outside Face
  - Horizontal Projections not Shown for Clarity.
  - Quantity of Concrete in End Post Included with Superstructure on Sheet 7 of 12.
  - See Sheet 7 of 12 for Section A-A.
  - \* North Wall
  - \*\* South Wall

### LEGEND

Portion of Exist. Wingwall to be removed. Quantity Included with Concrete Removal.

EAST ABUTMENT PLAN & DETAILS  
 BACKBONE ROAD OVER I-80  
 F.A.I. ROUTE 80  
 SECTION (06-4HB-1D)  
 BUREAU COUNTY  
 STATION 2289+07.63 (F.A.I. 80)  
 S.N. 006-0116  
 DATE: JANUARY 30, 2006  
 GRAEF, ANHALT, SCHLOEMER & ASSOCIATES INC  
 CHICAGO ILLINOIS

DESIGNED	D.F.W.
CHECKED	J.A.Z.
DRAWN	T.J.L.
CHECKED	D.F.W.

91:200404:20040414:06:Vms:st:uct:ur:dl:Vfinal:1-30-06:V04-06-sfz.dgn 02/09/2006 09:24:14