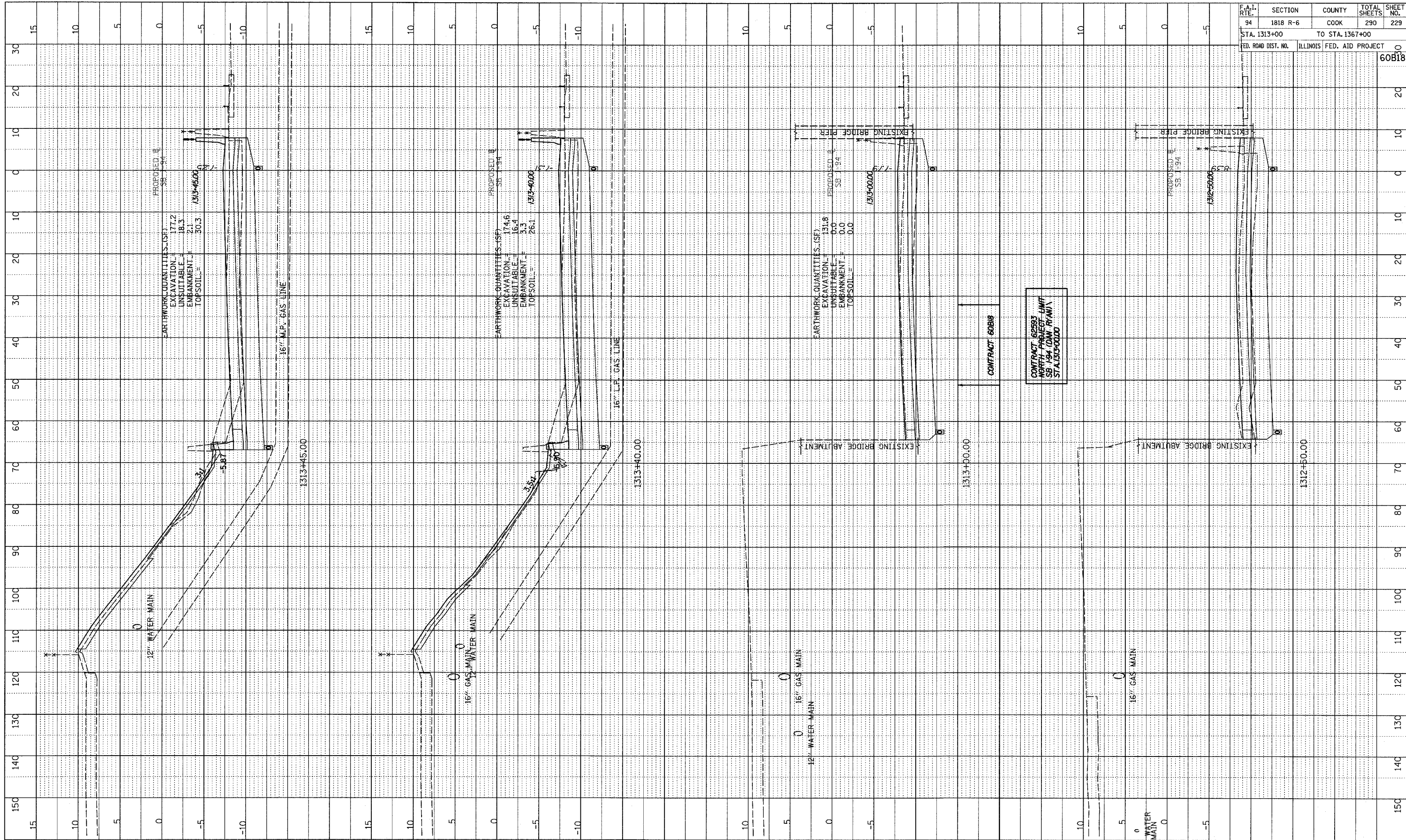
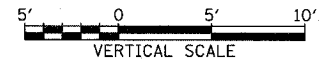


PROFILE SURVEYED _____ DATE _____
 PLOTTED _____
 NOTE BOOK _____
 NO. _____
 STRUCTURE NOTATIONS CHRD



F.A.I. RTE.	SECTION	COUNTY	TOTAL SHEETS	SHEET NO.
94	1818 R-6	COOK	290	229
STA. 1313+00		TO STA. 1367+00		
FED. ROAD DIST. NO.	ILLINOIS	FED. AID PROJECT		60B18

TYLIN INTERNATIONAL



I-94 SOUTHBOUND (DAN RYAN EXPWY)
 STA. 1312+50 TO STA. 1313+45

02/27/2006 12:45:55 PM P:\02313\road\230\gpk230\gpk230.dgn