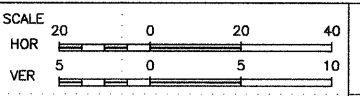
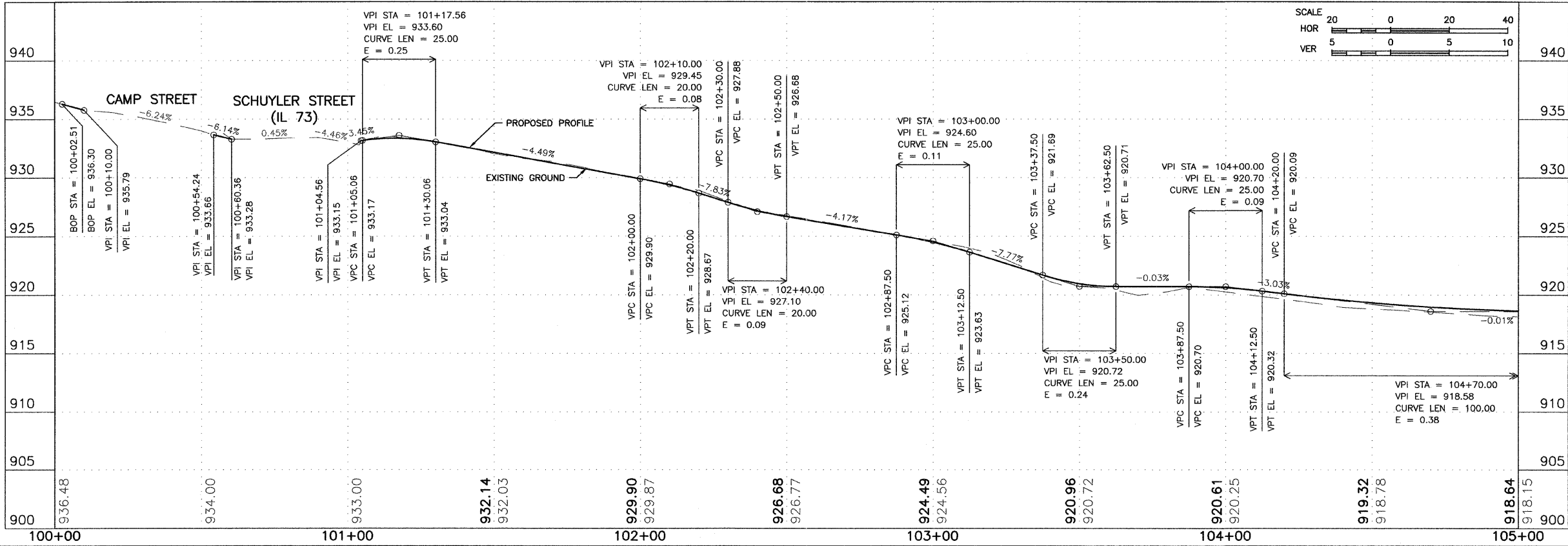


- KEY NOTES**
1. PCC DRIVEWAY, 7".
  2. PCC SIDEWALK, 5".
  3. ADA DETECTABLE WARNING, WITH TYPE A RAMP.
  4. SIGN TO BE REMOVED AND RELOCATED.
  5. DOMESTIC WATER SERVICE BOX TO BE ADJUSTED.
  6. DRAIN OUTLET TO BE ADJUSTED.
  7. MANHOLE TO BE ADJUSTED.
  8. CONCRETE CURB & GUTTER REPLACEMENT.
  9. EPOXY PAVEMENT MARKING.
  10. INC. HMA SURFACING, 5", SUB-BASE GRANULAR MATERIAL, TYPE A, 12".
  11. CLEANOUT TO BE ADJUSTED.
  12. HOT-MIX ASPHALT SURFACE REMOVAL, 2". CONTRACTOR TO MILL EXISTING PAVEMENT IN AREA OF CROSSWALK TO ENSURE A MAXIMUM OF 2% SLOPE FOR THE 6' WIDTH OF THE CROSSWALK. AFTER COMPLETION OF MILLING, CONTRACTOR SHALL PLACE HOT-MIX ASPHALT SURFACE COURSE, MIX "C", N50, 2" AT A MAXIMUM 2% SLOPE WITHIN THE 6' CROSSWALK.



**FEHR-GRAHAM & ASSOCIATES, LLC**  
 ENGINEERING AND SCIENCE CONSULTANTS  
 FREEPORT, IL ROCKFORD, IL ROCHELLE, IL SPRINGFIELD, IL MONROE, WI  
 ILLINOIS DESIGN FIRM NO. 184-003525  
 © 2012 FEHR-GRAHAM & ASSOCIATES

OWNER/DEVELOPER:  
 VILLAGE OF LENA  
 122 EAST MAIN STREET  
 P.O. BOX 607  
 LENA, ILLINOIS 61048

PROJECT AND LOCATION:  
 SAFE ROUTES  
 TO SCHOOL PROGRAM

DRAWN BY: B.C.  
 APPROVED BY: P.E.  
 DATE: 09/15/10  
 SCALE: AS NOTED

REVISIONS		
REV. NO.	DESCRIPTION	DATE
2	REVISIONS PER IDOT REVIEW	12/03/10
3	REVISIONS PER IDOT REVIEW	05/26/11
4	REVISIONS PER IDOT REQUIREMENTS	09/23/11
5	REVISIONS PER IDOT REQUIREMENTS	01/13/12

DRAWING:  
 SCHUYLER ST SIDEWALK PLAN & PROFILE  
 STA 100+00 - STA 105+00

JOB NUMBER:  
 10-138  
 SHEET NUMBER:  
 10 of 41