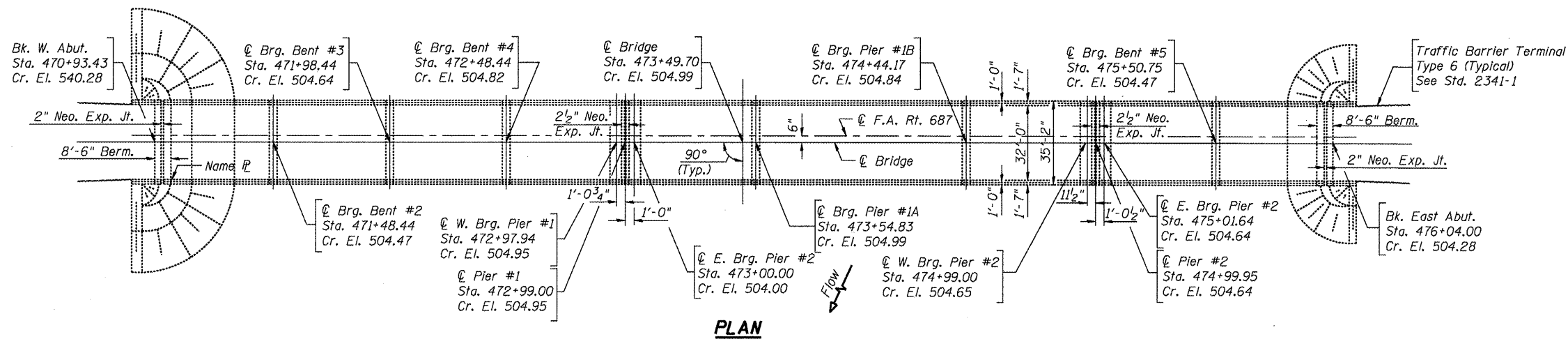
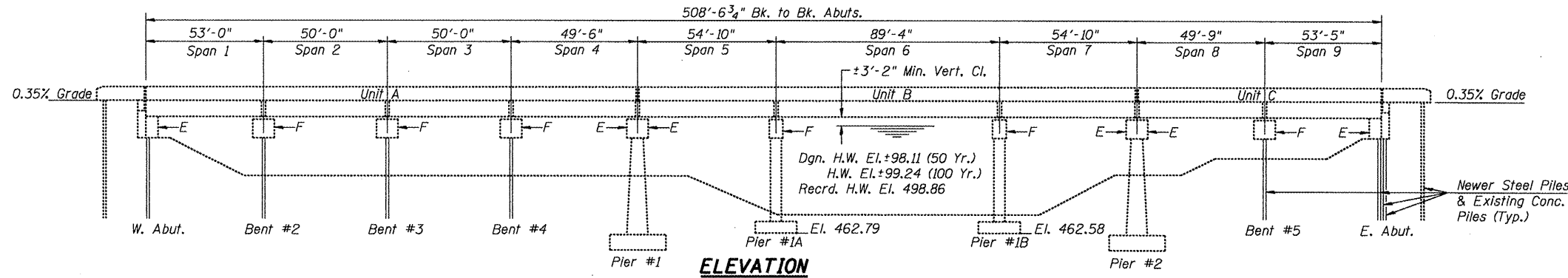


B.M.-Chiseled notch on top of headwall
30.4' Rt. of Sta. 467+25 El. 503.96

GENERAL NOTES

Plan dimensions and details relative to existing structure have been taken from existing plans and are subject to nominal construction variations. It shall be the Contractor's responsibility to verify such dimensions and details in the field and make necessary approved adjustments prior to construction or ordering of materials. Such variations shall not be cause for additional compensation for a change in the scope of the work, however, the Contractor will be paid for the quantity actually furnished at the unit price bid for the work.
Protective Coat shall not be applied to surfaces to which Waterproofing Membrane System is applied.



DESIGN SPECIFICATIONS

2002 AASHTO Standard Specifications - 17th ed.

LOADING HS20-44

Allow 25#/sq. ft. for future wearing surface.

TOTAL BILL OF MATERIAL

Item	Unit	Total
Structural Repair of Concrete (equal to or less than 5 Inches)	SQFT	12
Thermal Spraying (Metalizing) Bridge Concrete Surface	SQFT	270
Deck Slab Repair (Partial)	SQYD	25

S:\GENY_DRAFT\STOBEL\NSV_SOURDIA\BRIDGE_S\029-0025.dgn

FILE NAME = #FILE#	USER NAME = #USER#	DESIGNED - CEJ	REVISED -	STATE OF ILLINOIS DEPARTMENT OF TRANSPORTATION	GENERAL PLAN & ELEVATION SN.029-0025 IL.95 OVER SPOON RIVER	F.A.P. RTE. 687	SECTION (125B1)	COUNTY FULTON	TOTAL SHEETS 14	SHEET NO. 8	
PLOT SCALE = #SCALE#	CHECKED -	REVISOR -	SCALE: _____			SHEET NO. _____ OF _____ SHEETS	CONTRACT MAINT. BRIDGE REPAIRS	CONTRACT: 68A58			
PLOT DATE = #DATE#	DATE - 11/15/2011	REVISOR -	STA. _____ TO STA. _____			ILLINOIS FED. AID PROJECT					