

STATE OF ILLINOIS
DEPARTMENT OF TRANSPORTATION
DIVISION OF HIGHWAYS

PROPOSED
HIGHWAY PLANS

FAU 1324: US 14 (DEMPSTER ST.)
LUTHER LN. TO E. OF GREENWOOD AVE.
SECTION: 2010-094-RS

RESURFACING
COOK COUNTY
C-91-060-11

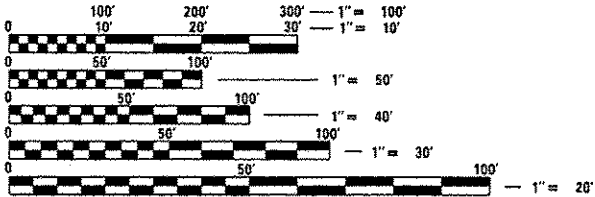
| F.A.U. RTE. | SECTION | COUNTY | TOTAL SHEETS | SHEET NO. |
|-----------------------------|-------------|--------|-----------------|--------------|
| 1324 | 2010-094-RS | COOK | 22 | 1 |
| ILLINOIS CONTRACT NO. 60L93 | | | | |

D-91-060-11



FOR INDEX OF SHEETS, SEE SHEET NO. 2

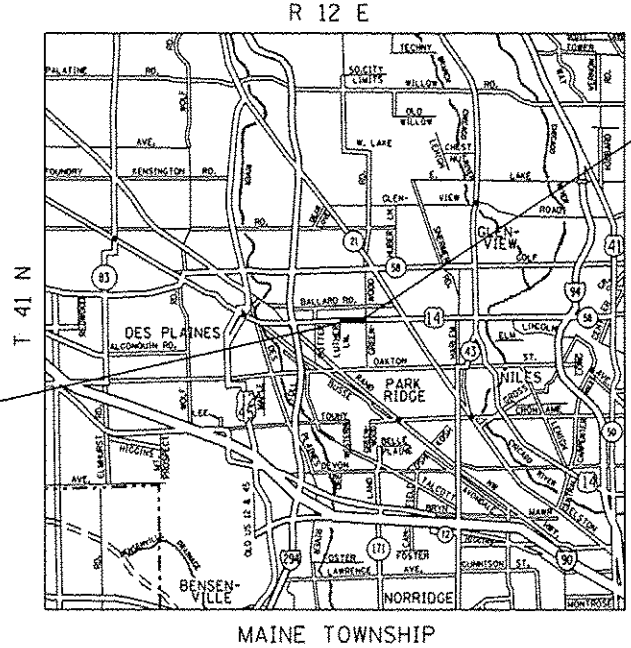
PROJECT LOCATED IN THE CITY
OF PARK RIDGE AND VILLAGE OF NILES



FULL SIZE PLANS HAVE BEEN PREPARED USING STANDARD
ENGINEERING SCALES. REDUCED SIZED PLANS WILL NOT
CONFORM TO STANDARD SCALES. IN MAKING MEASUREMENTS
ON REDUCED PLANS, THE ABOVE SCALES MAY BE USED.

J.U.L.I.E.
JOINT UTILITY LOCATION INFORMATION FOR EXCAVATION
1-800-892-0123
OR 811

PROJECT BEGINS:
STATION: 3+00



PROJECT ENDS:
STATION: 36+88

TRAFFIC DATA
2011 ADT = 36,000
SPEED LIMIT = 35 MPH

GROSS AND NET LENGTH OF PROJECT = 3,388 FEET = 0.64 MILES

PROJECT ENGINEER: KARI SMITH (847) 705-4437
PROJECT MANAGER: KEN ENG (847) 705-4247

CONTRACT NO. 60L93

STATE OF ILLINOIS
DEPARTMENT OF TRANSPORTATION
DIVISION OF HIGHWAYS
SUBMITTED January 31, 2013
John Fortson DEPUTY DIRECTOR OF HIGHWAYS, REGION ENGINEER
March 22, 2013
John D. Baranyski, PE acting ENGINEER OF DESIGN AND ENVIRONMENT
March 22, 2013
Omer Osman, PE DIRECTOR OF HIGHWAYS, CHIEF ENGINEER

PRINTED BY THE AUTHORITY
OF THE STATE OF ILLINOIS