

STATE OF ILLINOIS
DEPARTMENT OF TRANSPORTATION

F.A.P. RTE.	SECTION	COUNTY	TOTAL SHEETS	SHEET NO.
17A	(111&123)STY	OGLE	22	1
ILLINOIS CONTRACT NO. 64T85				

INDEX OF SHEETS:

- 1 COVER
- 2 DISTRICT STANDARDS, HIGHWAYS STANDARDS, AND GENERAL NOTES
- 3 SUMMARY OF QUANTITIES
- 4 TYPICAL SECTIONS
- 5 SCHEDULE OF QUANTITIES
- 6 ALIGNMENT, TIES, AND BENCHMARKS
- 7 MAINTENANCE OF TRAFFIC
- 8 PAVEMENT MARKING PLAN
- 9 SIGN PLAN
- 10-22 DISTRICT DETAILS

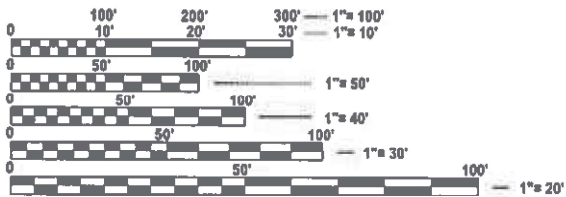
PROPOSED
HIGHWAY PLANS

FAP ROUTE 17A (IL 64) AT FAP ROUTE 1042 (IL 251)
SECTION (111&123)STY
PROJECT HSIP-802C(677)
INTERIM STRIPING
OGLE COUNTY

C-92-186-24

COORDINATE SYSTEM: ILLINOIS STATE PLANE COORDINATE
SYSTEM WEST ZONE (NAD 83)

POSTED SPEED: 55 MPH (IL 64)
55 MPH (IL 251)

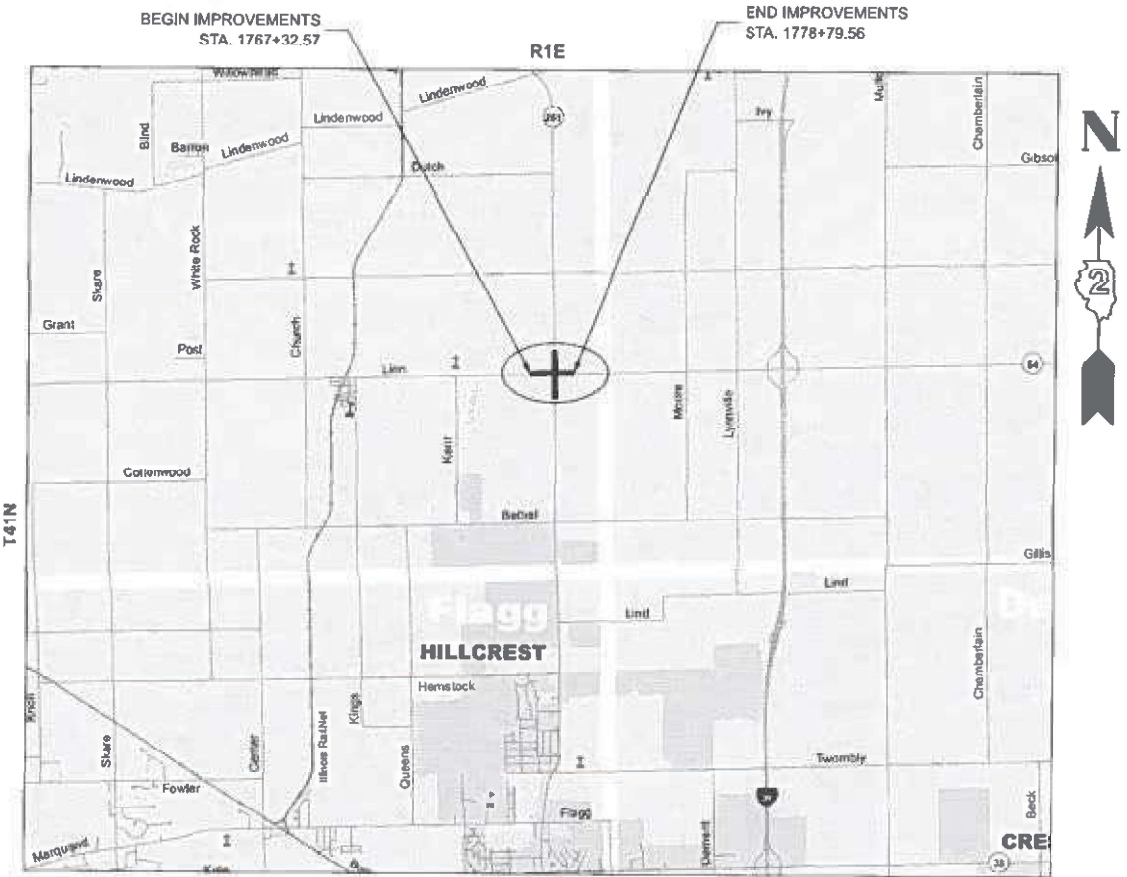


FULL SIZE PLANS HAVE BEEN PREPARED USING STANDARD
ENGINEERING SCALES. REDUCED SIZED PLANS WILL NOT
CONFORM TO STANDARD SCALES. IN MAKING MEASUREMENTS
ON REDUCED PLANS, THE ABOVE SCALES MAY BE USED.

J.U.L.I.E.
JOINT UTILITY LOCATION INFORMATION FOR EXCAVATION
1-800-892-0123
OR 811

PROJECT ENGINEER: Rob Bates 815-284-5464

CONTRACT NO. 64T85



LOCATION MAP
(NOT TO SCALE)

IL 64 GROSS LENGTH = 1,146.99 FT. = 0.22 MILE
IL 64 NET LENGTH = 1,146.99 FT. = 0.22 MILE



STATE OF ILLINOIS
DEPARTMENT OF TRANSPORTATION

SUBMITTED Jan 15 2025
Justin Shoup
REGIONAL ENGINEER

March 21 2025
Scott A. Etkin
ENGINEER OF DESIGN AND ENVIRONMENT

March 21 2025
Chadley
DIRECTOR OF HIGHWAYS PROJECT IMPLEMENTATION

PRINTED BY THE AUTHORITY
OF THE STATE OF ILLINOIS

GENERAL NOTES

1. COORDINATE WITH IDOT CONTRACT: IL 64 RESURFACING ON CONTRACT #64U25
2. THE TWO ENTRANCES SOUTH OF THE INTERSECTION OF IL 64 AND IL 251 WILL BE TEMPORARILY CLOSED DURING THE REMOVAL OF EXISTING PAVEMENT MARKING AND INSTALLATION OF PROPOSED PAVEMENT MARKING.
3. THE CONTRACTOR SHALL NOTIFY TRAFFIC OPERATIONS A MINIMUM OF 5 WORKING DAYS PRIOR TO PLACING PERMANENT PAVEMENT MARKING OR SIGNING.
4. THE CONTRACTOR SHALL BE RESPONSIBLE FOR COLLECTING AND MAINTAINING AN ELECTRONIC LOG OF ALL STAKEOUT SURVEY THAT IS PERFORMED ON THE JOB, EITHER BY HIM/HER OR ANY SUB-CONTRACTOR PERFORMING THE STAKEOUT. UPON REQUEST, ALL LOGS SHALL BE SUBMITTED TO THE DEPARTMENT. NO ADDITIONAL COMPENSATION WILL BE ALLOWED FOR THIS WORK, BUT SHALL BE CONSIDERED INCLUDED IN THE COST FOR CONSTRUCTION LAYOUT.
5. IT SHALL BE THE CONTRACTOR'S RESPONSIBILITY TO VERIFY ALL DIMENSIONS AND CONDITIONS EXISTING IN THE FIELD PRIOR TO CONSTRUCTION AND ORDERING OF MATERIALS.
6. THE CONTRACTOR SHALL PROTECT AND CAREFULLY PRESERVE ALL SECTION OR SUBSECTION MONUMENTS, PROPERTY CORNERS, AND REFERENCE MARKERS UNTIL THE OWNER, HIS AGENT, OR AN AUTHORIZED SURVERYOR HAS WITNESSED OR OTHERWISE REFERENCED THEIR LOCATIONS.
7. PRIOR TO BEGINNING CONSTRUCTION ACTIVITIES, THE CONTRACTOR SHALL COORDINATE ALL LANE CLOSURES AND CONSTRUCTION ACTIVITIES WITH THE CONCERNED AGENCIES AND JURISDICTIONS AND THE ENGINEER TWO WEEKS PRIOR TO CLOSING LANES OR BEGINNING CONSTRUCTION.
8. DO NOT SCALE PLANS FOR CONSTRUCTION DIMENSIONS
9. PAVEMENT MARKING SHALL BE DONE ACCORDING TO STANDARD 780001
10. ANY REFERENCE TO A STANDARD IN THESE PLANS SHALL BE INTERPRETED TO MEAN THE EDITION AS INDICATED BY THE SUBNUMBER SHOWN IN THE LIST OF STANDARDS OR THE COPY INCLUDED IN THESE PLANS.
11. THE CONTRACTOR SHALL MAINTAIN EXISTING STREET ACCESS TO ABUTTING PROPERTY AT ALL TIMES DURING CONSTRUCTION OF THE PROJECT UNLESS OTHERWISE NOTED IN THE PLANS OR DIRECTED BY THE ENGINEER.
12. THE FOLLOWING LISTED UTILITIES LOCATED WITHIN THE PROJECT LIMITS OR IMMEDIATELY ADJACENT TO THE PROJECT CONSTRUCTION LIMITS ARE MEMBERS OF JULIE:

NICOR GAS CO.: (888)-642-6748

COMED: (800)-334-7661

NOTE: THERE IS NO UTILITY WORK ANTICIPATED. IDOT IS NOT A MEMBER OF JULIE.
THERE ARE NO IDOT FACILITIES IN THE AREA.

HIGHWAY STANDARDS

- 000001-08 STANDARD SYMBOLS
- 001006 DECIMAL / INCH FOOT
- 701006-05 OFF ROAD OPERATIONS, 2L, 2W, 15' (4.5 M) TO 24" (600 MM) FROM PAVEMENT EDGE
- 701201-05 LANE CLOSURE, 2L, 2W, DAY ONLY, FOR SPEEDS GREATER THAN OR EQUAL TO 45 MPH
- 701301-04 LANE CLOSURE, 2L, 2W, SHORT TIME OPERATIONS
- 701311-03 LANE CLOSURE, 2L, 2W MOVING OPERATIONS- DAY ONLY
- 701701-10 URBAN LANE CLOSURE, MULTILANE INTERSECTION
- 701901-10 TRAFFIC CONTROL DEVICES
- 781001-04 TYPICAL APPLICATIONS RAISED REFLECTIVE PAVEMENT MARKERS

DISTRICT 2 STANDARDS

- 34.1 WORK ZONE SIGN DETAILS
- 38.1 TRAFFIC CONTROL FOR TRANSITION AREAS
- 41.1 TYPICAL PAVEMENT MARKINGS
- 91.4 RUMBLE RESURFACING

MODEL: General Notes [Sheet]
FILE NAME: L:\EFH\Main\21001570-00_D2\various01_IL251-64\Interim\157000\CADD Data\Sheet\264T85-sht-general.dgn

MODEL: Schedule [Sheet]
FILE NAME: L:\EFK\men\21001570-00_D2\various01_IL251-484\interim\157000\CADD Data\SheetID264T85-shh-SQ.dgn

SUMMARY OF QUANTITIES				CONSTR. CODE
				90% HSIP 10% STATE
CODE NO.	ITEM	UNIT	TOTAL QUANTITY	SAFETY
				0021
				RURAL
67100100	MOBILIZATION	L SUM	1	1
70100450	TRAFFIC CONTROL AND PROTECTION, STANDARD 701201	L SUM	1	1
70102635	TRAFFIC CONTROL AND PROTECTION, STANDARD 701701	L SUM	1	1
72400100	REMOVE SIGN PANEL ASSEMBLY - TYPE A	EACH	2	2
78009004	MODIFIED URETHANE PAVEMENT MARKING - LINE 4"	FOOT	9,079	9,079
78009008	MODIFIED URETHANE PAVEMENT MARKING - LINE 8"	FOOT	663	663
78009012	MODIFIED URETHANE PAVEMENT MARKING - LINE 12"	FOOT	2,197	2,197
78009024	MODIFIED URETHANE PAVEMENT MARKING - LINE 24"	FOOT	128	128
78100100	RAISED REFLECTIVE PAVEMENT MARKER	EACH	126	126
78300200	RAISED REFLECTIVE PAVEMENT MARKER REMOVAL	EACH	129	129
78300202	PAVEMENT MARKING REMOVAL - WATER BLASTING	SQ FT	3,963	3,963
X0420110	RUMBLE RESURFACING	SQ YD	30	30
Z0013798	CONSTRUCTION LAYOUT	L SUM	1	1



USER NAME	= ruehara
PLOT DATE	= 1/24/2025

DESIGNED	-	RTU
DRAWN	-	RTU
CHECKED	-	ARS
DATE	-	DEC 2024

REVISED	-
REVISED	-
REVISED	-
REVISED	-

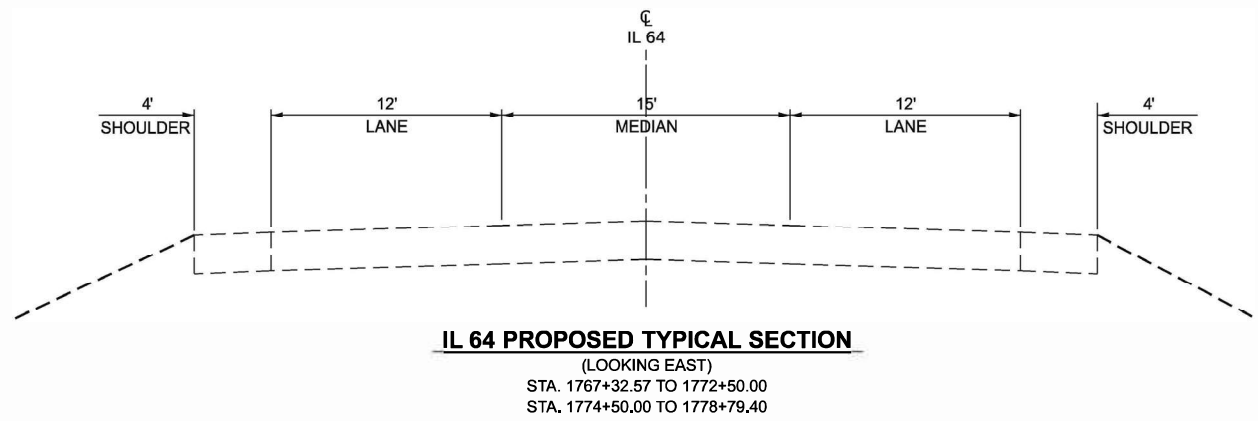
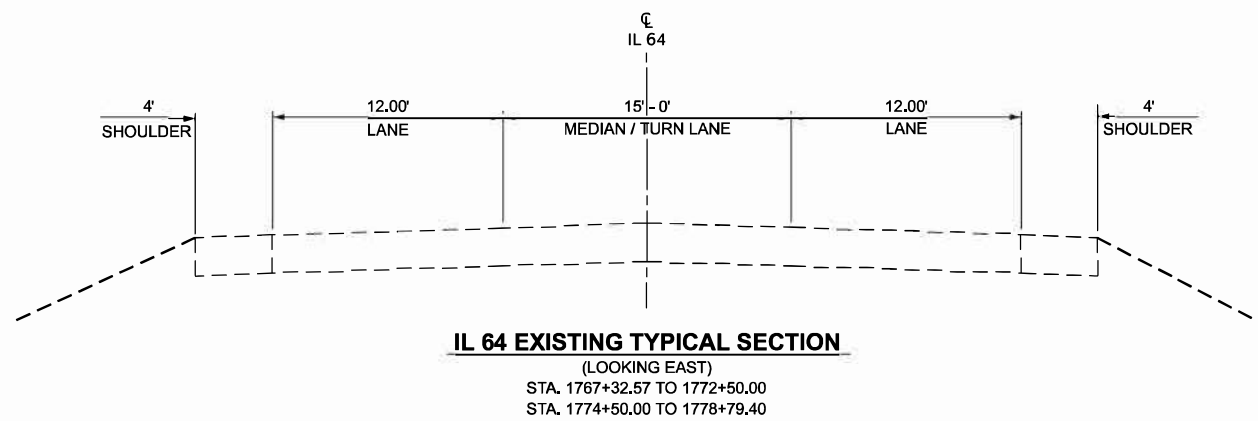
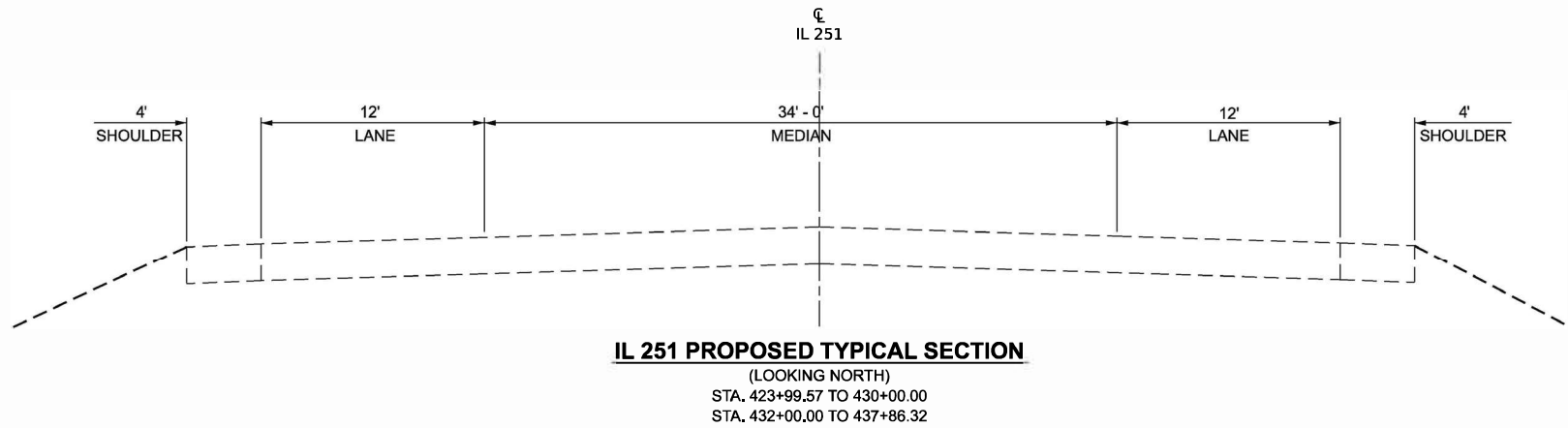
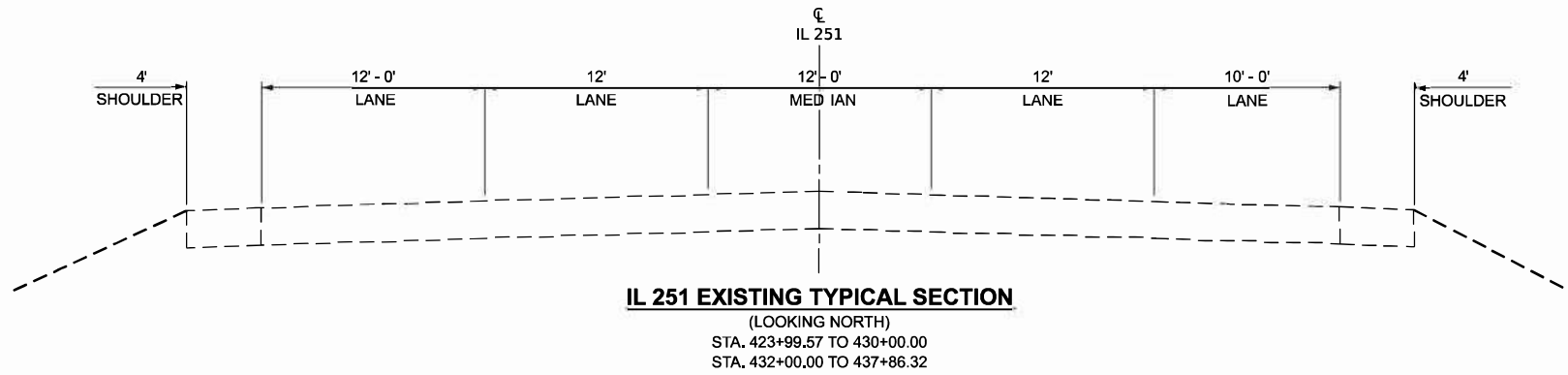
STATE OF ILLINOIS
DEPARTMENT OF TRANSPORTATION

SUMMARY OF QUANTITIES

SCALE: SHEET 1 OF 1 SHEETS STA. TO STA.

F.A.P RTE.	SECTION	COUNTY	TOTAL SHEETS	SHEET NO.
17A	(111&123)STY	OGLE	22	3
CONTRACT NO. 64T85				
		ILLINOIS	FED. AID PROJECT	

MODEL: Typical Section - 2 [Sheet]
FILE NAME: L:\EPK\Mon12\001570-00_D2\various07_IL251-64\interim\157000\CADD Data\Sheet\284785-rlt-typicals.dgn



USER NAME = ruehara	DESIGNED - RTU	REVISED -
	DRAWN - RTU	REVISED -
	CHECKED - ARS	REVISED -
PLOT DATE = 12/19/2024	DATE - DEC 2024	REVISED -

STATE OF ILLINOIS
DEPARTMENT OF TRANSPORTATION

TYPICAL SECTIONS

SCALE: SHEET 1 OF 1 SHEETS STA. TO STA.

F.A.P. RTE.	SECTION	COUNTY	TOTAL SHEETS	SHEET NO.
17A	(111&123)STY	OGLE	22	4
CONTRACT NO. 64T85				
ILLINOIS FED. AID PROJECT				

PAVEMENT MARKING SCHEDULE

STATION / LOCATION			MODIFIED URETHANE PAVEMENT MARKING				RAISED REFLECTIVE PAVEMENT MARKER	RAISED REFLECTIVE PAVEMENT MARKER REMOVAL	PAVEMENT MARKING REMOVAL - WATER BLASTING
			LINE 4"	LINE 6"	LINE 12"	LINE 24"			
STATION	TO	STATION	(FOOT)	(FOOT)	(FOOT)	(FOOT)	(EACH)	(EACH)	(SQ FT)
IL 251									
423+99.40		437+86.48	5,075	663	1,764	62	69	58	2,589
IL 64									
1767+32.57		1773+00.00	2,174		228	33	31	39	771
1774+00.00		1778+79.56	1,830		205	33	26	32	603
TOTAL			9,079	663	2,197	128	126	129	3,963

SIGNING REMOVAL SCHEDULE

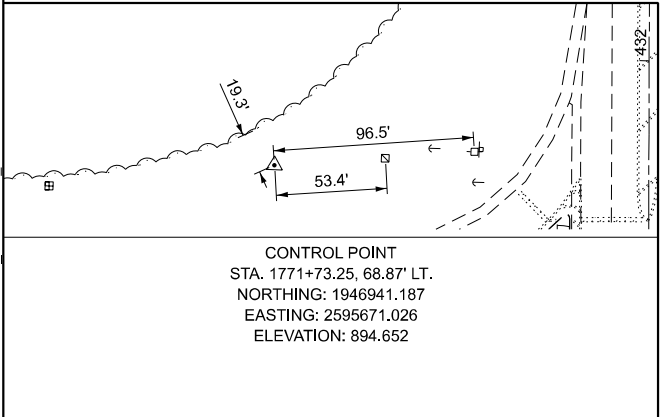
STATION	OFFSET	FACING	SIGN DESCRIPTION	SIGN DESIGNATION	SIGN SIZE (IN x IN)	REMOVE SIGN PANEL ASSEMBLY TYPE A
						(EACH)
IL 251						
429+21.24	44.00 LT	SB	LANE ENDS	W4-2	36 x 36	1
433+07.73	43.87 RT	NB	LANE ENDS	W4-2	36 x 36	1
TOTAL						2

RUMBLE RESURFACING SCHEDULE

STATION / LOCATION			RUMBLE RESURFACING
STATION	TO	STATION	(SQ YD)
IL 64			
1776+75.00		1778+75.00	10
1778+75.00		1780+75.00	10
1784+30.00		1786+30.00	10
TOTAL			30

MODEL: Schedule [Sheet]
FILE NAME: L:\EFK\men\21001570-00_D2\various01_IL251-64\Interim\157000\CADD Data\Sheet\ID264T85-sh-Schedules.dgn

MODEL: IL64-Plan 1 [Sheet]
FILE NAME: L:\EFK\mon21001570-00_D2\various01_IL251-64\Interim\157000\CADD Data\Sheet\ID264T85-sh1-ATB.dgn

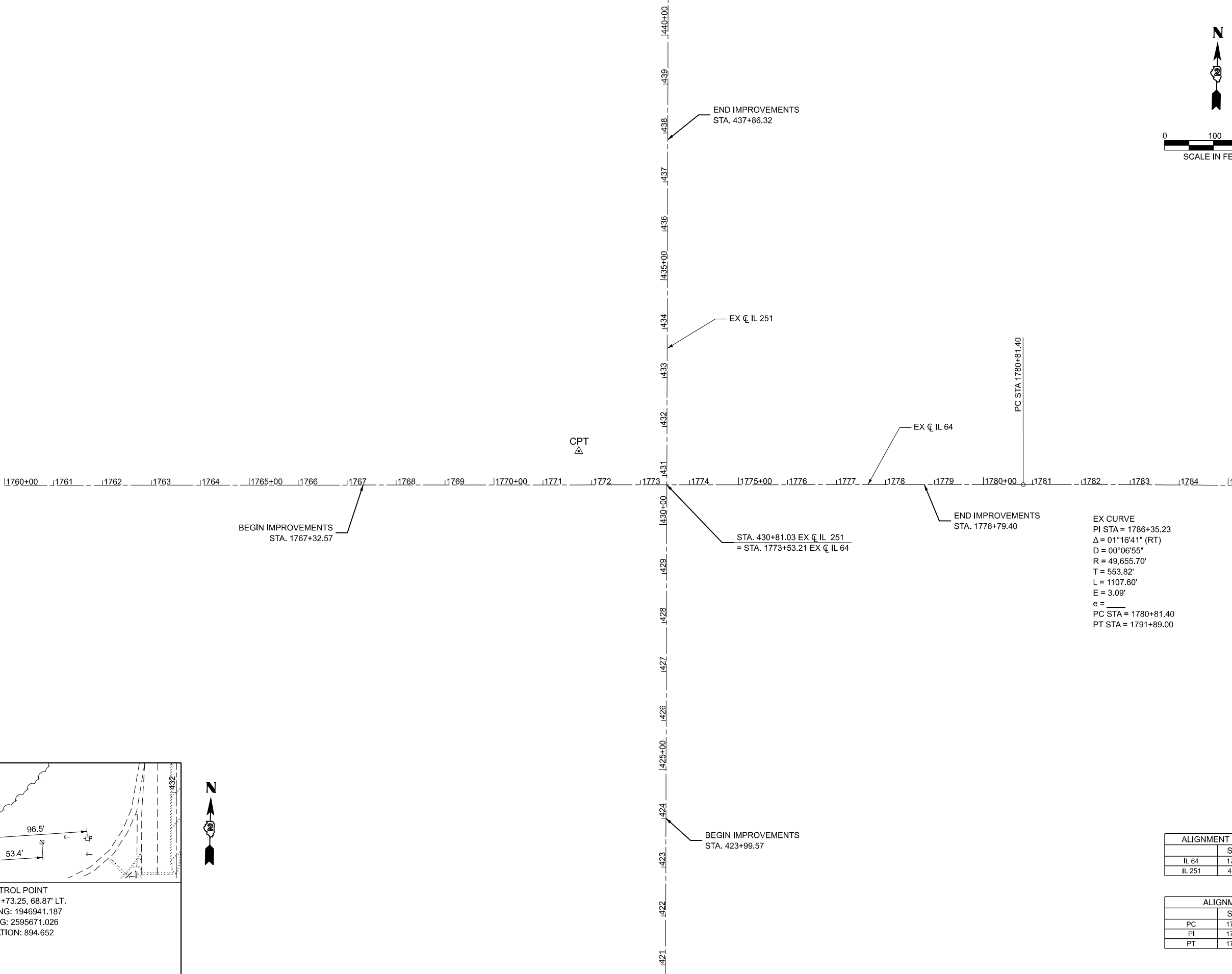
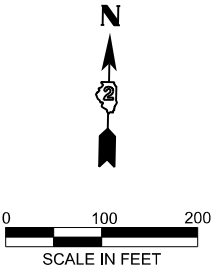


	USER NAME = ruehara	DESIGNED - RTU	REVISED -
		DRAWN - RTU	REVISED -
		CHECKED - ARS	REVISED -
	PLOT DATE = 12/19/2024	DATE - DEC 2024	REVISED -

STATE OF ILLINOIS
DEPARTMENT OF TRANSPORTATION

ALIGNMENT, TIES, & BENCHMARKS			
SCALE: 1"=100'	SHEET 1	OF 1	SHEETS
STA. 1760+00.00	TO STA. 1785+00.00		

F.A.P RTE.	SECTION	COUNTY	TOTAL SHEETS	SHEET NO.
17A	(111&123)STY	OGLE	22	6
CONTRACT NO. 64T85				
ILLINOIS FED. AID PROJECT				



ALIGNMENT COORDINATES - INTERSECTION			
	STATION	N	E
IL 64	1773+53.21		
IL 251	430+81.03	1946876.912	2595852.683

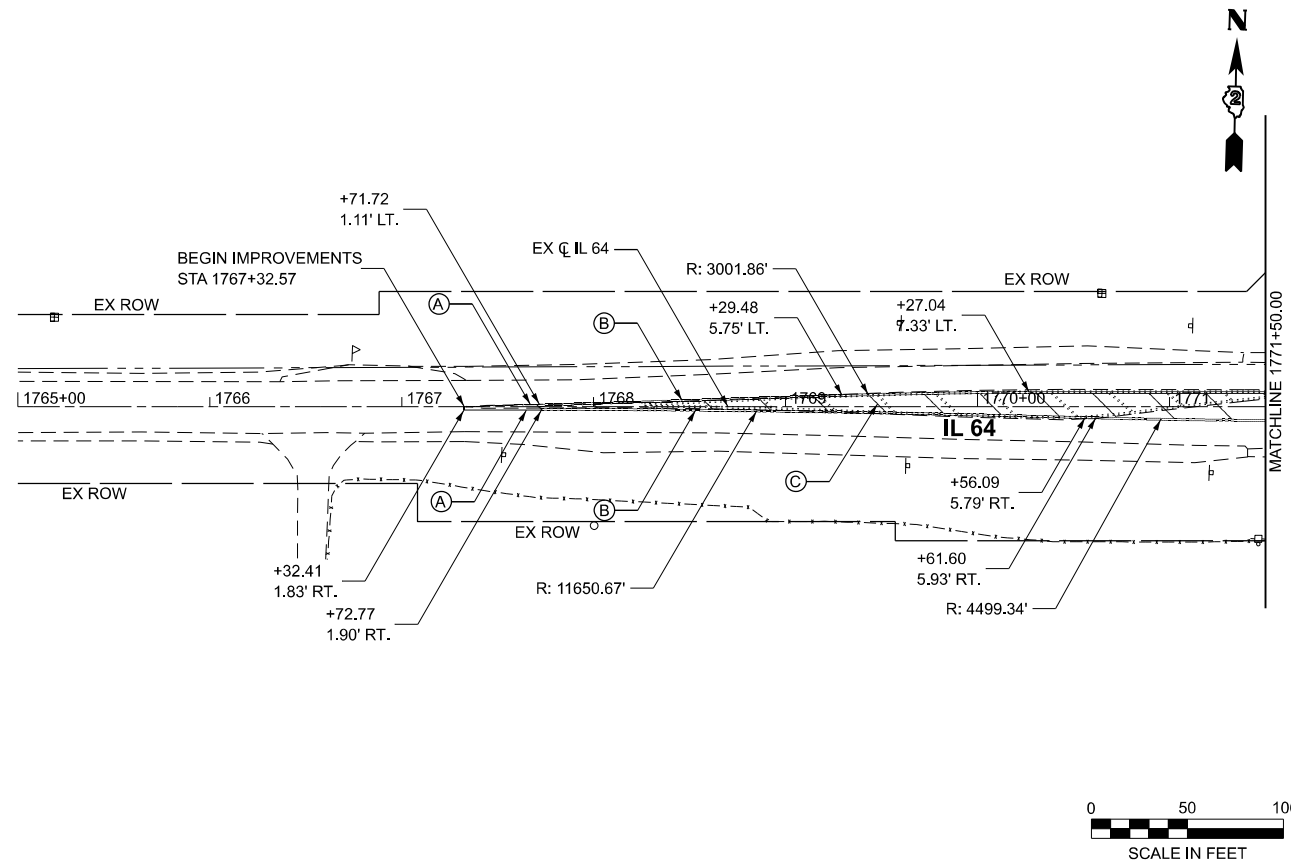
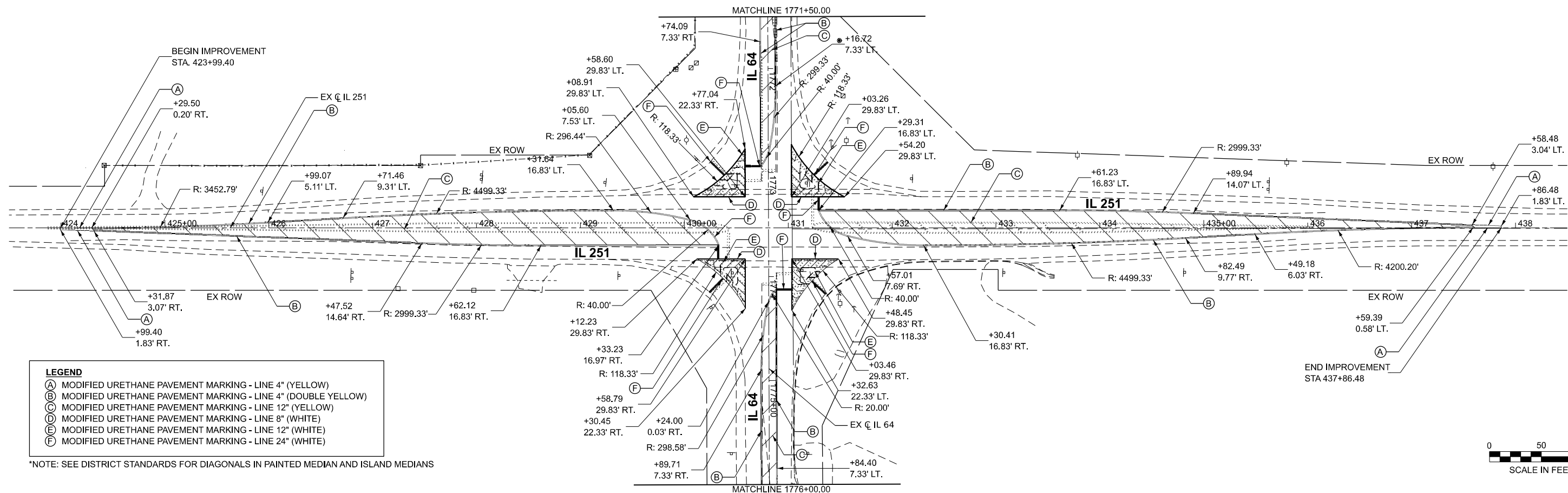
ALIGNMENT COORDINATES - IL 64			
	STATION	N	E
PC	1780+81.40	1946895.413	2596580.636
PI	1786+35.23	1946909.484	2597134.280
PT	1791+89.00	1946911.203	2597688.101

MAINTENANCE OF TRAFFIC GENERAL NOTES

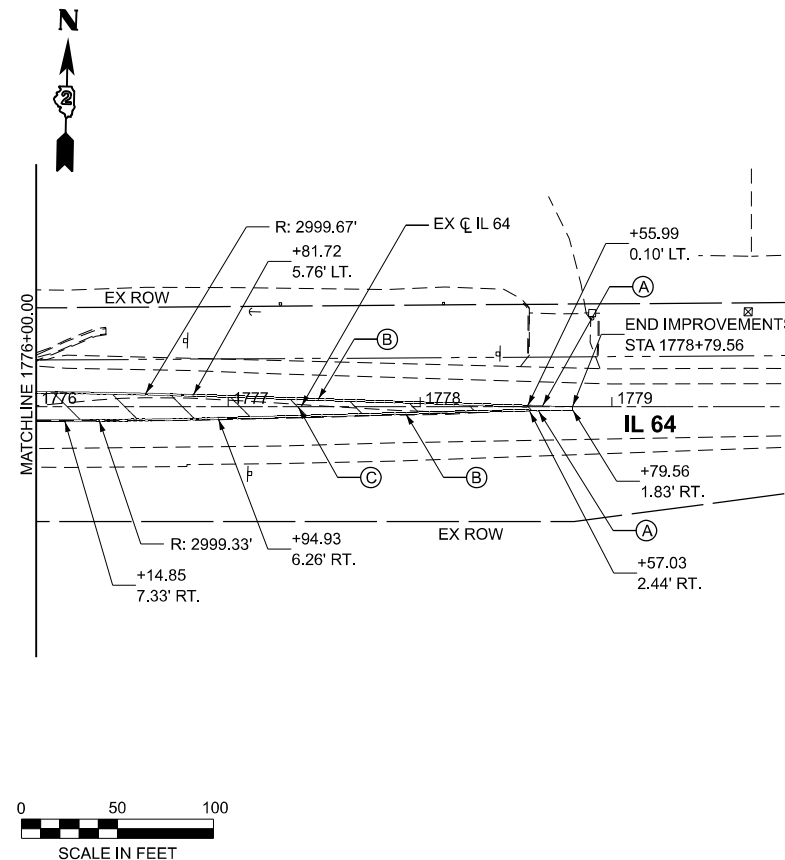
1. FLAGGERS SHALL BE REQUIRED FOR THE REMOVAL OF EXISTING PAVEMENT MARKING AND INSTALLATION OF PROPOSED PAVEMENT MARKING.
2. ALL TRAFFIC CONTROL DEVICES USED SHALL BE NEW OR IN LIKE NEW CONDITION.
3. CORNER ISLAND AND LEFT TURN LANE OPERATIONS SHALL COMPLY WITH THE TRAFFIC CONTROL TAPERS, LANE CLOSURES, AND SIGNING DISPLAYED IN STANDARD 701701.
4. ISLAND MEDIAN OPERATIONS SHALL COMPLY WITH THE TRAFFIC CONTROL DISPLAYED IN STANDARD 701701.
5. MUST MAINTAIN ACCESS TO GRUBSTEAKERS THROUGHOUT THE DURATION OF THE PROJECT.
6. THE ENTRANCE WEST OF THE INTERSECTION WILL REMAIN OPEN THROUGHOUT THE DURATION OF THE PROJECT.
7. THE CONTRACTOR MAY WISH TO MAKE REVISIONS OR MODIFICATIONS TO THE MAINENANCE OF TRAFFIC PLANS. ALL CHANGES MUST BE SUBMITTED IN WRITING TO THE ENGINEER FOR APPROVAL. REVISIONS IN THE PHASING OF CONSTRUCTION OR MAINTENANCE OPERATIONS MAY REQUIRE ADDITIONAL TRAFFIC CONTROL TO BE INSTALLED OTHER THAN THOSE INCLUDED IN THE PLANS. REVISIONS IN THE PHASING OF CONSTRUCTION OR MAINTENANCE OPERATIONS REQUESTED BY THE CONTRACTOR REQUIRING ADDITIONAL SIGNING, FLAGGERS, BARRICADES OR OTHER TRAFFIC CONTROL DEVICES SHALL BE ATH THE CONTRACTOR'S EXPENSE.
8. THE CONTRACTOR SHALL NOTIFY THE ENGINEER OF ANY STAGE CHANGE A MINIMUM OF SEVEN (7) DAYS IN ADVANCE OF THE THE SCHEDULED TRAFFIC CHANGE.

MODEL: MOT General Notes (Sheet)
FILE NAME: L:\EFK\mes\21001570-00_D2\various01_IL251-484\Interim\157000\CADD Data\Sheet\ID264T85-shh-MOT.dgn

	USER NAME = ruehara	DESIGNED - RTU	REVISED -	STATE OF ILLINOIS DEPARTMENT OF TRANSPORTATION	MAINTENANCE OF TRAFFIC GENERAL NOTES		F.A.P RTE.	SECTION	COUNTY	TOTAL SHEETS	SHEET NO.
		DRAWN - RTU	REVISED -				17A	(111&123)STY	OGLE	22	7
		CHECKED - ARS	REVISED -				CONTRACT NO. 64T85				
	PLOT DATE = 1/12/2025	DATE - DEC 2024	REVISED -				ILLINOIS FED. AID PROJECT				
SCALE:		SHEET 1	OF 1	SHEETS	STA.	TO STA.					



*NOTE: SEE DISTRICT STANDARDS FOR DIAGONALS IN PAINTED MEDIAN



MODEL: IL251_OGLE_Plan_1 [Sheet]
FILE NAME: L:\EFK\Main\200\1570-00_D2\various01_IL251-64\Interim\157000\CADD Data\Sheet\264785-shp-pmk.dgn



USER NAME =	ruehara	DESIGNED -	RTU	REVISED -	
		DRAWN -	JCF	REVISED -	
		CHECKED -	ARS	REVISED -	
PLOT DATE =	12/19/2024	DATE -	DEC 2024	REVISED -	

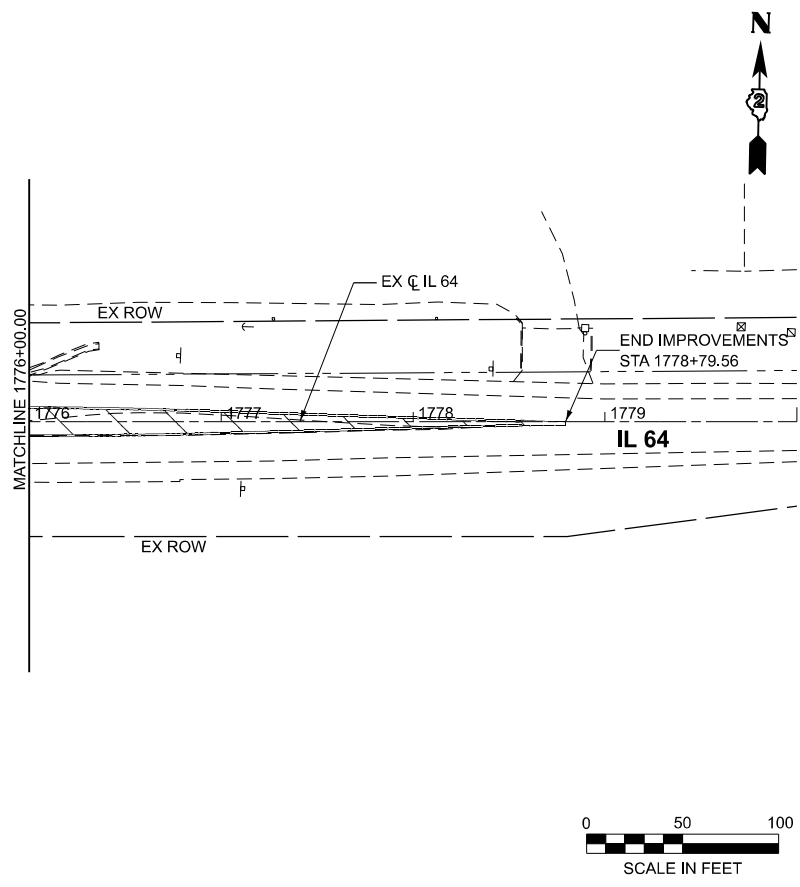
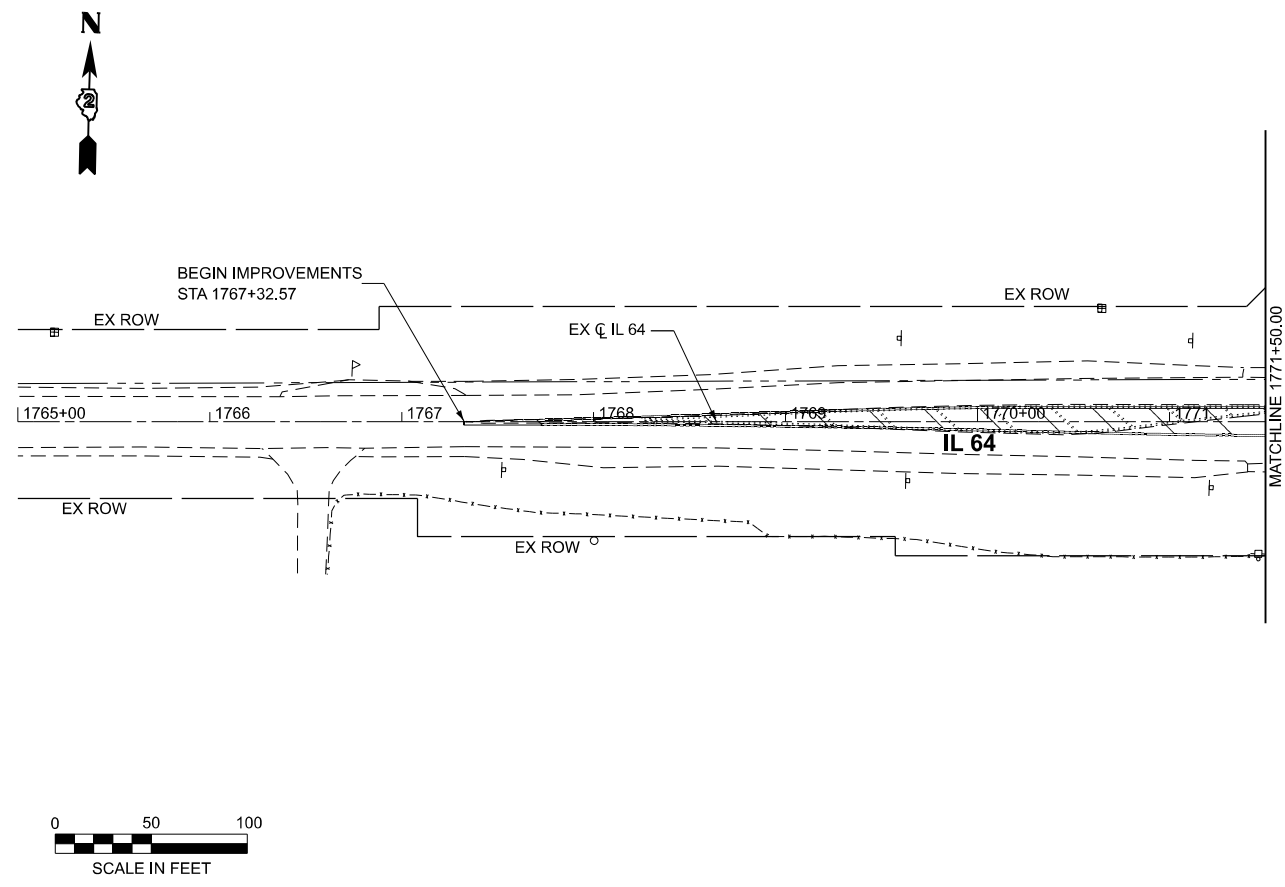
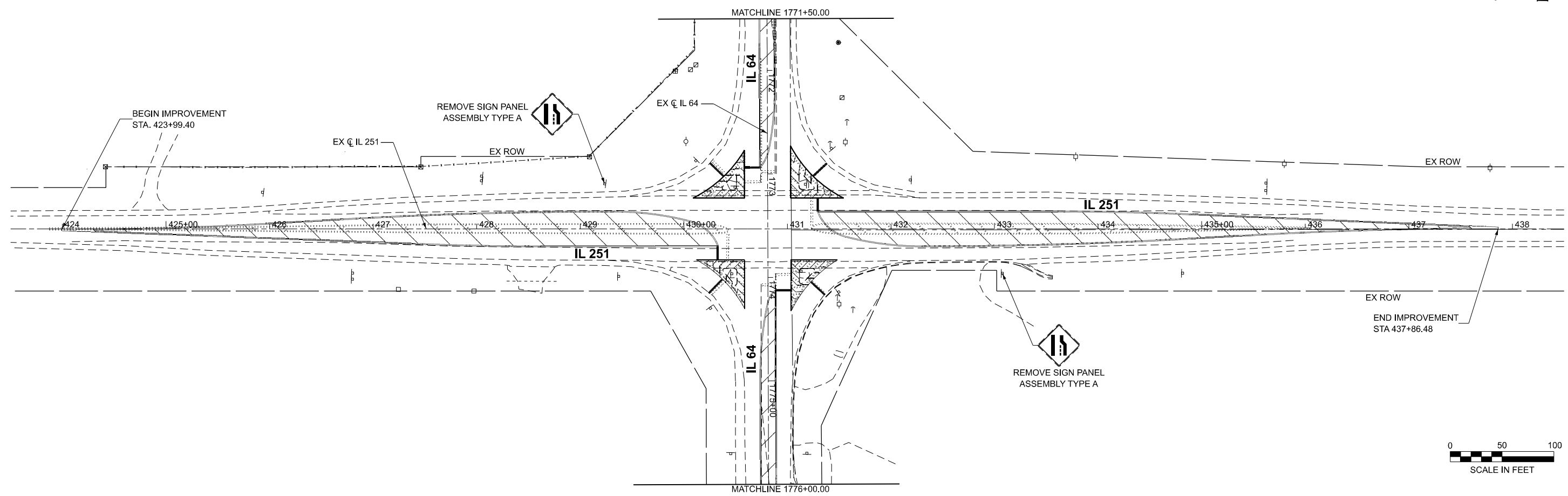
STATE OF ILLINOIS
DEPARTMENT OF TRANSPORTATION

PAVEMENT MARKING PLAN
IL 251 @ IL 64

SCALE: 1"=50' SHEET 1 OF 1 SHEETS STA. TO STA.

F.A.P. RTE.	SECTION	COUNTY	TOTAL SHEETS	SHEET NO.
17A	(111&123)STY	OGLE	22	8
CONTRACT NO. 64T85				
ILLINOIS FED. AID PROJECT				

MODEL: IL251_OGLE - Plan 1 (Sheet)
FILE NAME: L:\EFK\men\200\1570-00_D2\various01_IL251-64\interim\157000\CADD Data\Sheet\264785-shp-pmk.dgn



USER NAME = ruehara	DESIGNED -	RTU	REVISED -
	DRAWN -	RTU	REVISED -
	CHECKED -	ARS	REVISED -
	DATE -	DEC 2024	REVISED -
PLOT DATE = 12/19/2024			

STATE OF ILLINOIS
DEPARTMENT OF TRANSPORTATION

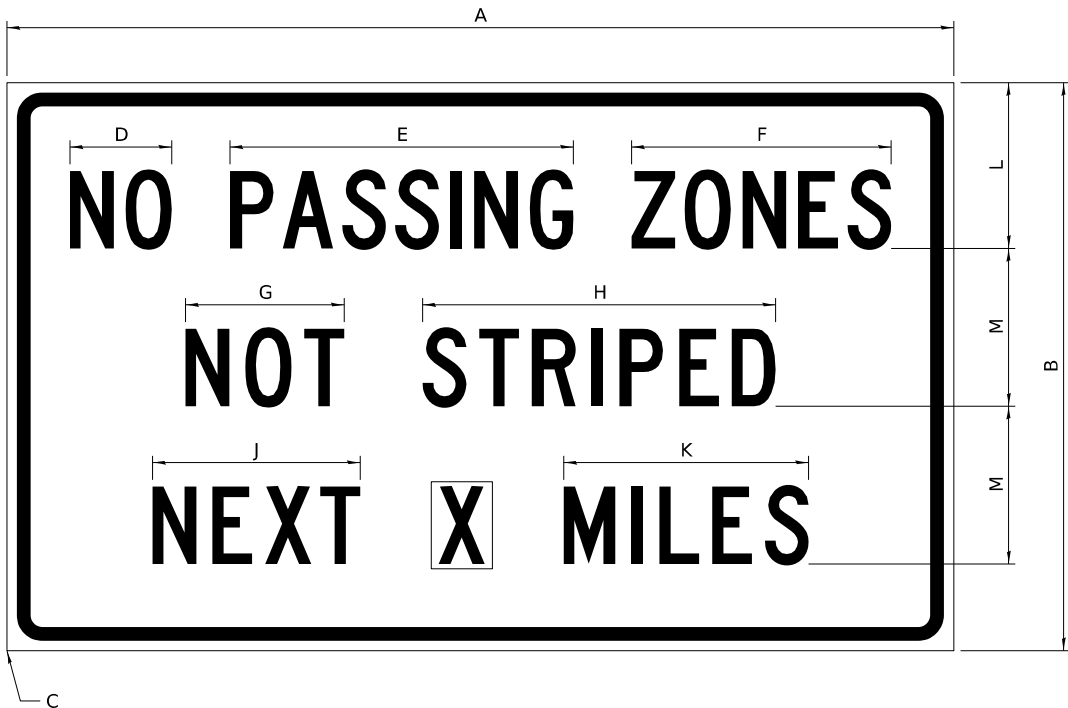
SIGN PLAN
IL 251 @ IL 64

SCALE: 1"=50' SHEET 1 OF 1 SHEETS STA. TO STA.

F.A.P. RTE.	SECTION	COUNTY	TOTAL SHEETS	SHEET NO.
17A	(111&123)STY	OGLE	22	9
CONTRACT NO. 64T85				
ILLINOIS FED. AID PROJECT				

WORK ZONE SIGN DETAILS

ILLINOIS STANDARD G20-I100



COLOR LEGEND AND BORDER BACKGROUND BLACK ORANGE NON-REFLECTORIZED REFLECTORIZED

SIGN SIZE	DIMENSIONS											
	A	B	C	D	E	F	G	H	J	K	L	M
60 x 36	60.00	36.00	2.25	6.4	21.80	16.40	10.00	22.40	13.20	15.50	10.50	10.00

SIGN SIZE	SERIES BY LINE			MARGIN	BORDER
	1	2	3		
60 x 36	5C	5C	5C	0.625	0.875

Sign not to scale

GENERAL NOTES

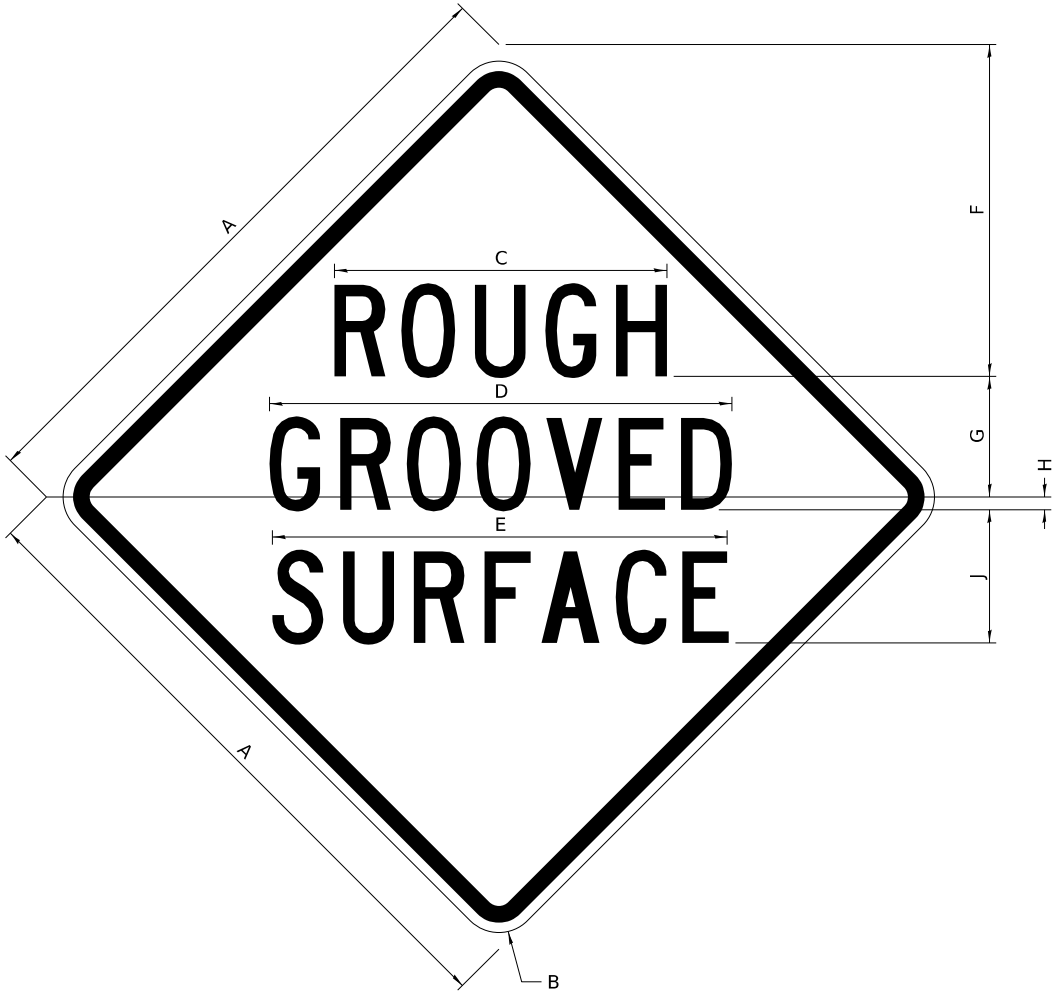
All work to furnish and install these signs shall be included in the cost of the specified traffic control standards and shall not be paid separately.

All Illinois Standard signs shall conform to the latest edition of the "Illinois Standard Highway Signs Book" in effect on the date of invitation for bids.

Signs shall meet the applicable portions of Sections 701 and 720 of the Standard Specifications.

All dimensions are in inches unless otherwise noted.

ILLINOIS STANDARD W8-I107



COLOR LEGEND AND BORDER BACKGROUND BLACK ORANGE NON-REFLECTORIZED REFLECTORIZED

SIGN SIZE	DIMENSIONS								
	A	B	C	D	E	F	G	H	J
48 x 48	48.00	3.00	25.00	34.80	34.20	24.94	9.00	1.00	10.00

SIGN SIZE	SERIES BY LINE			MARGIN	BORDER
	1	2	3		
48 x 48	7C	7C	7C	1.250	0.750

Sign not to scale

MODEL: District Standards [Sheet]
FILE NAME: L:\EKF\men\21001570-00_D2\various01_IL251-484\interim\157000\CADD Data\Sheet\ID264785-shh-District_Standards.dgn



USER NAME = ruehara	DESIGNED - RTU	REVISED -
	DRAWN - RTU	REVISED -
	CHECKED - ARS	REVISED -
PLOT DATE = 1/12/2025	DATE - JAN 2025	REVISED -

STATE OF ILLINOIS
DEPARTMENT OF TRANSPORTATION

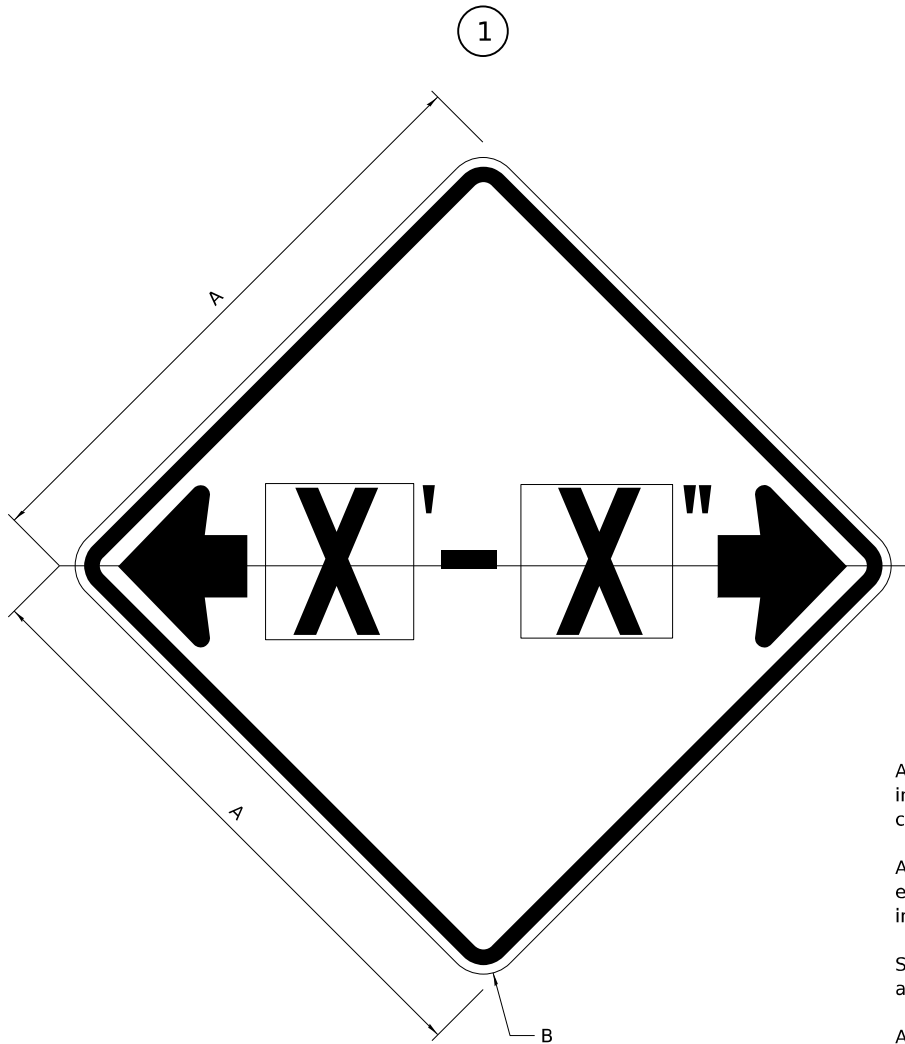
REGION 2 / DISTRICT 2 STANDARD

SCALE: SHEET 1 OF 12 SHEETS STA. TO STA.

F.A.P RTE.	SECTION	COUNTY	TOTAL SHEETS	SHEET NO.
17A	(111&123)STY	OGLE	22	10
CONTRACT NO. 64T85				
ILLINOIS FED. AID PROJECT				

WORK ZONE SIGN DETAILS

ILLINOIS STANDARD W12-I102



GENERAL NOTES

All work to furnish and install these signs shall be included in the cost of the specified traffic control standards and shall not be paid separately.

All Illinois Standard signs shall conform to the latest edition of the "Illinois Standard Highway Signs Book" in effect on the date of invitation for bids.

Signs shall meet the applicable portions of Sections 701 and 720 of the Standard Specifications.

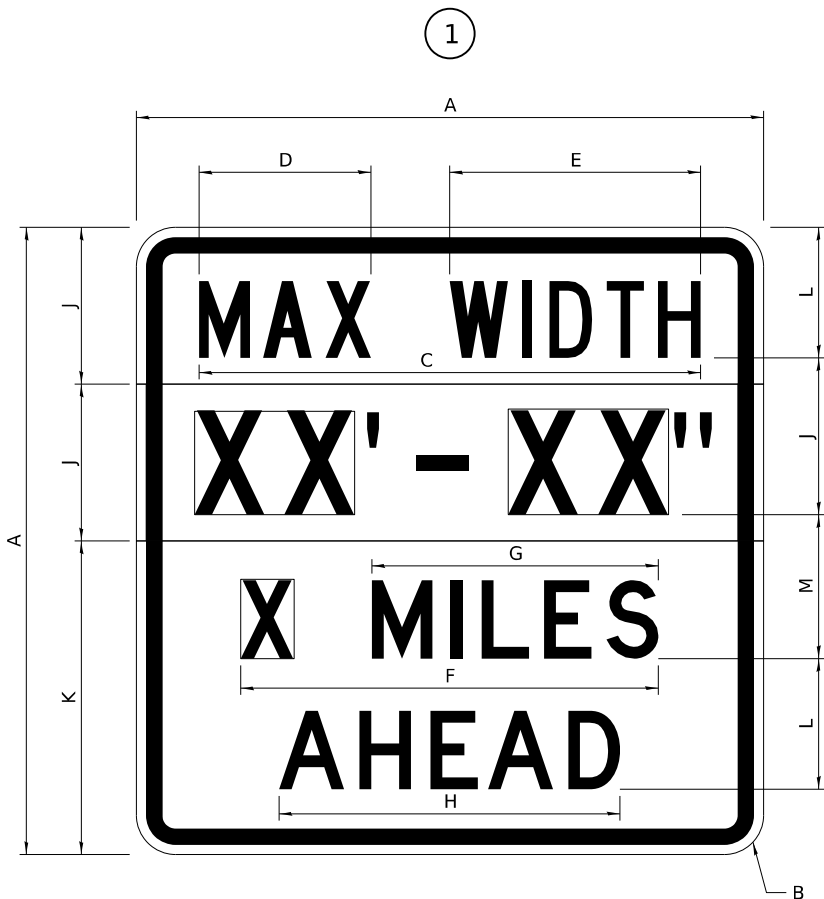
All dimensions are in inches unless otherwise noted.

COLOR	LEGEND AND BORDER BACKGROUND	BLACK FL ORANGE	NON-REFLECTORIZED REFLECTORIZED
SIGN SIZE	DIMENSIONS		① Illinois Standard signs W12-I102 and W12-I103 shall be used as described in the special provisions.
	A	B	
48 x 48	48.00	3.00	

SIGN SIZE	SERIES BY LINE	MARGIN	BORDER
	1		
48 x 48	12C	0.750	1.250

Sign not to scale

ILLINOIS STANDARD W12-I103



COLOR	LEGEND AND BORDER BACKGROUND BACKGROUND (WIDTH)	BLACK WHITE FL ORANGE	NON-REFLECTORIZED REFLECTORIZED REFLECTORIZED
-------	---	-----------------------	---

SIGN SIZE	DIMENSIONS											
	A	B	C	D	E	F	G	H	J	K	L	M
48 x 48	48.00	3.00	38.40	13.20	19.20	32.00	22.00	26.20	12.00	24.00	10.00	11.00

SIGN SIZE	SERIES BY LINE				MARGIN	BORDER
	1	2	3	4		
48 x 48	6C	8D	6D	6D	0.750	1.250

Sign not to scale

XX'-XX" WIDTH AND X MILES ARE VARIABLE TOP AND BOTTOM OF BACKGROUND WHITE

MODEL: District Standard2 (Sheet)
FILE NAME: L:\EFK\men2\1001570-00_D2\various01_IL251-484\interim\157000\CADD Data\Sheet\ID264785-shh-District Standards.dgn



USER NAME = ruehara	DESIGNED - RTU	REVISED -
	DRAWN - RTU	REVISED -
	CHECKED - ARS	REVISED -
PLOT DATE = 1/12/2025	DATE - JAN 2025	REVISED -

STATE OF ILLINOIS
DEPARTMENT OF TRANSPORTATION

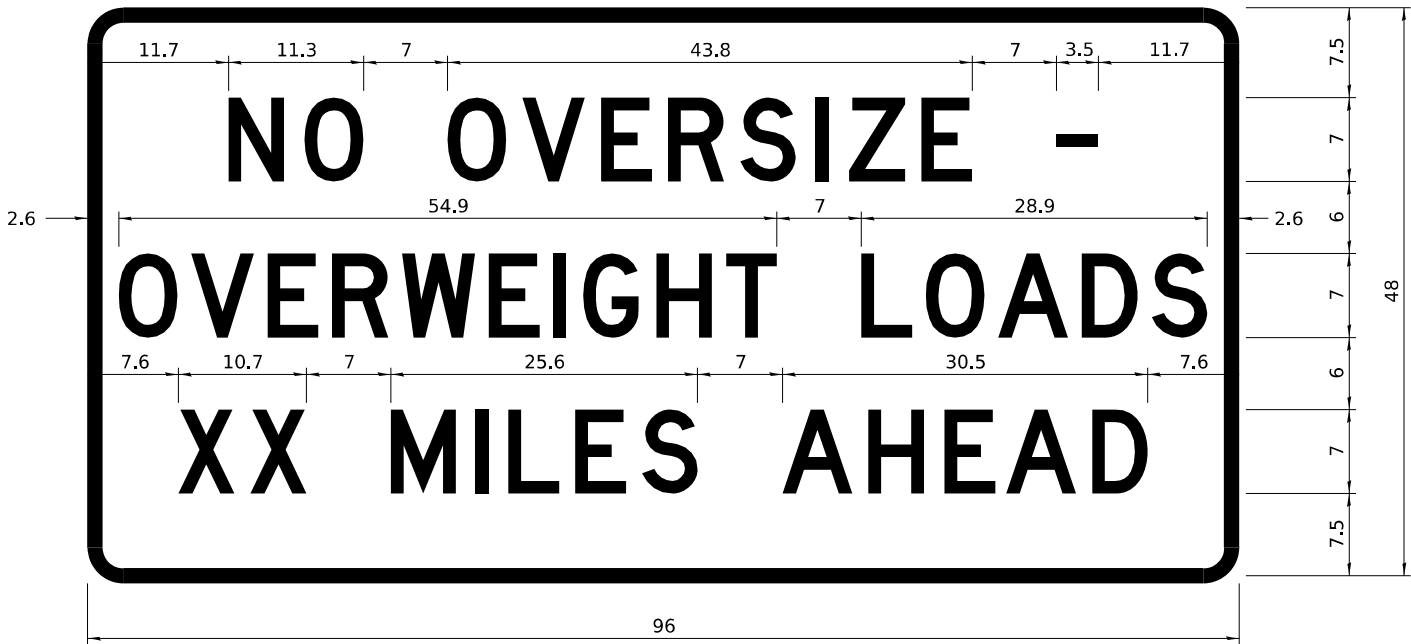
REGION 2 / DISTRICT 2 STANDARD

SCALE: SHEET 2 OF 12 SHEETS STA. TO STA.

F.A.P RTE.	SECTION	COUNTY	TOTAL SHEETS	SHEET NO.
17A	(111&123)STY	OGLE	22	11
CONTRACT NO. 64T85				
ILLINOIS FED. AID PROJECT				

WORK ZONE SIGN DETAILS

ROAD CLOSED TO OVERSIZED LOADS



COLOR	LEGEND AND BORDER BACKGROUND	BLACK ORANGE	NON-REFLECTORIZED REFLECTORIZED
-------	------------------------------	--------------	---------------------------------

Permit Loads - Loads Over 13 Feet; 3.0" Radius, 1.3" Border;
[NO OVERSIZE -] D; [OVERWEIGHT LOADS] D 85% spacing; [XX MILES AHEAD] D;
Table of letter and object lefts.

N	O	O	V	E	R	S	I	Z	E	-
11.7	18.1	30.0	36.2	42.8	48.4	54.4	60.7	63.5	69.5	80.8

O	V	E	R	W	E	I	G	H	T	L	O	A	D	S
2.6	8.6	15.0	20.4	26.2	33.4	38.8	41.3	47.4	53.2	64.5	69.9	75.9	82.9	88.7

X	X	M	I	L	E	S	A	H	E	A	D
7.6	13.6	25.3	32.3	35.1	40.6	46.2	57.9	65.1	71.4	76.6	83.7

Sign not to scale

STOP LINE SIGN FOR TEMPORARY SIGNALS



COLOR	LEGEND AND BORDER BACKGROUND	BLACK WHITE	NON-REFLECTORIZED REFLECTORIZED
-------	------------------------------	-------------	---------------------------------

SIGN SIZE	SERIES BY LINE		
	1	2	3
24 x 24	4C	4C	4C

Sign not to scale

GENERAL NOTES

All work to furnish and install these signs shall be included in the cost of the specified traffic control standards and shall not be paid separately.

All Illinois Standard signs shall conform to the latest edition of the "Illinois Standard Highway Signs Book" in effect on the date of invitation for bids.

Signs shall meet the applicable portions of Sections 701 and 720 of the Standard Specifications.

All dimensions are in inches unless otherwise noted.

MODEL: District Standard-3 (Sheet)
FILE NAME: L:\EKF\men\21001570-00_D2\various01_IL251-484\interim\157000\CADD Data\Sheet\ID264T85-shh-District_Standards.dgn



USER NAME = ruehara	DESIGNED - RTU	REVISED -
	DRAWN - RTU	REVISED -
	CHECKED - ARS	REVISED -
PLOT DATE = 1/12/2025	DATE - JAN 2025	REVISED -

STATE OF ILLINOIS
DEPARTMENT OF TRANSPORTATION

REGION 2 / DISTRICT 2 STANDARD

SCALE: SHEET 3 OF 12 SHEETS STA. TO STA.

F.A.P RTE.	SECTION	COUNTY	TOTAL SHEETS	SHEET NO.
17A	(111&123)STY	OGLE	22	12
CONTRACT NO. 64T85				
ILLINOIS FED. AID PROJECT				

WORK ZONE SIGN DETAILS

2

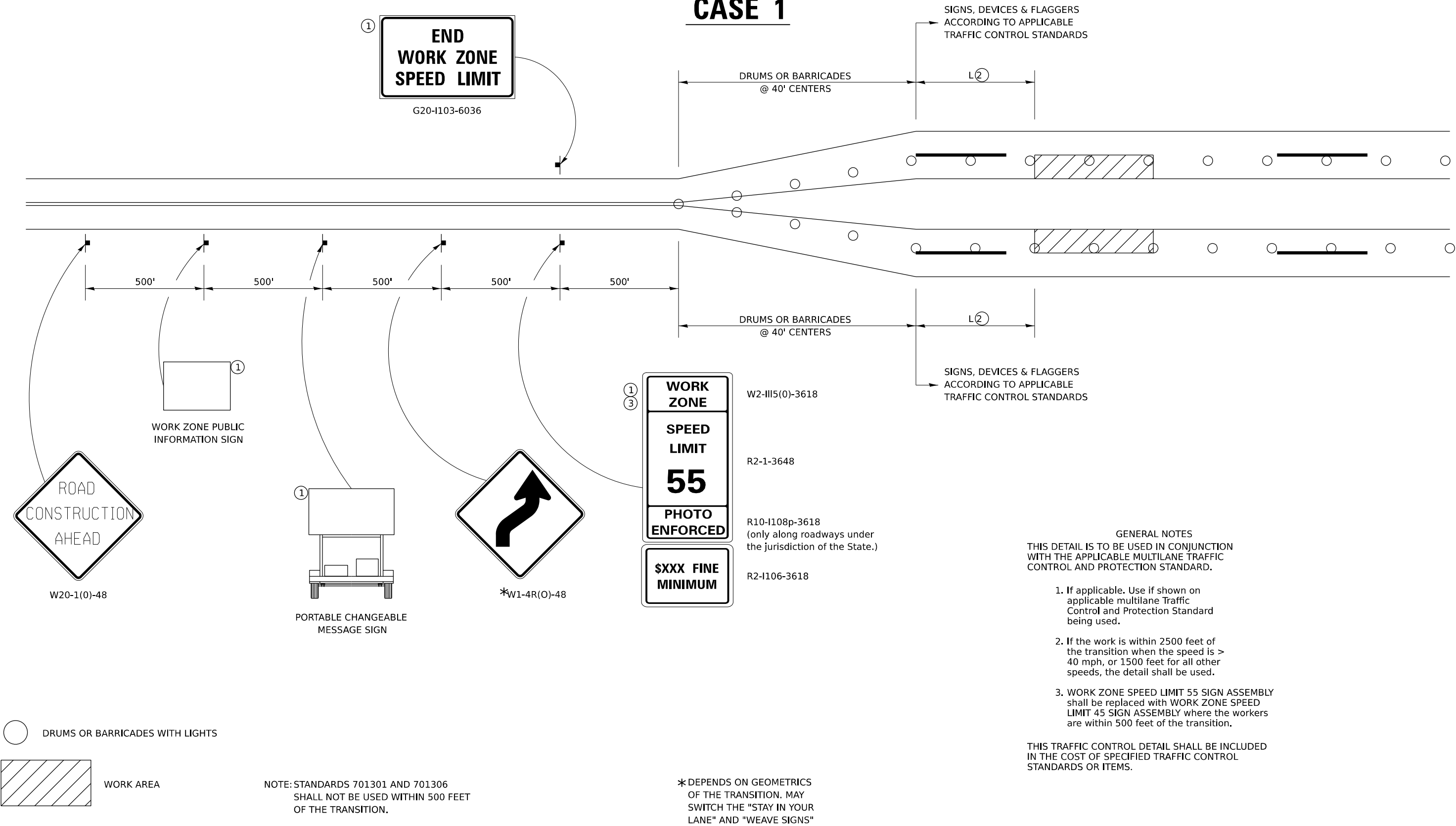


F.A.P RTE.	SECTION	COUNTY	TOTAL SHEETS	SHEET NO.
17A	(111&123)STY	OGLE	22	13
		CONTRACT NO. 64T85		
ILLINOIS		FED. AID PROJECT		

MODEL: District Standard-4 [Sheet]
FILE NAME: L:\EKF\Moen\21001570-00_D2\Various\01_IL251-64\Interim\157000\CADD Data\SheetID264735-sht-District Standards.dgn

TRAFFIC CONTROL FOR TRANSITION AREAS

CASE 1



GENERAL NOTES
THIS DETAIL IS TO BE USED IN CONJUNCTION WITH THE APPLICABLE MULTILANE TRAFFIC CONTROL AND PROTECTION STANDARD.

1. If applicable. Use if shown on applicable multilane Traffic Control and Protection Standard being used.
2. If the work is within 2500 feet of the transition when the speed is > 40 mph, or 1500 feet for all other speeds, the detail shall be used.
3. WORK ZONE SPEED LIMIT 55 SIGN ASSEMBLY shall be replaced with WORK ZONE SPEED LIMIT 45 SIGN ASSEMBLY where the workers are within 500 feet of the transition.

THIS TRAFFIC CONTROL DETAIL SHALL BE INCLUDED IN THE COST OF SPECIFIED TRAFFIC CONTROL STANDARDS OR ITEMS.

MODEL: District Standard-5 (Sheet)
FILE NAME: L:\EFK\men2\001570-00_D2\various01_IL251-484\Interim\157000\CADD Data\Sheet\ID264785-shh-District_Standards.dgn



USER NAME = ruehara	DESIGNED - RTU	REVISED -
	DRAWN - RTU	REVISED -
	CHECKED - ARS	REVISED -
PLOT DATE = 1/12/2025	DATE - JAN 2025	REVISED -

STATE OF ILLINOIS
DEPARTMENT OF TRANSPORTATION

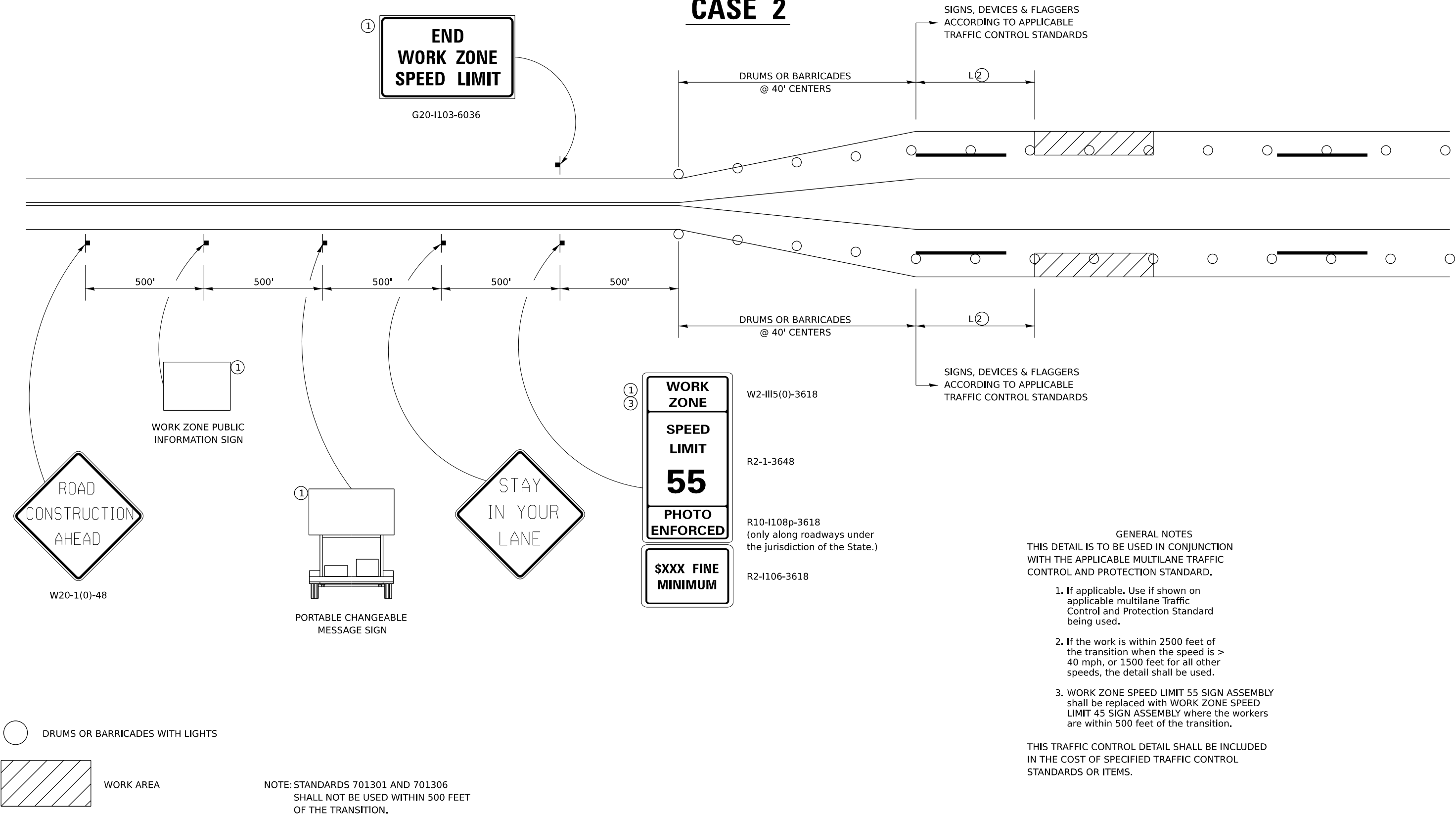
REGION 2 / DISTRICT 2 STANDARD

SCALE: SHEET 5 OF 12 SHEETS STA. TO STA.

F.A.P RTE.	SECTION	COUNTY	TOTAL SHEETS	SHEET NO.
17A	(111&123)STY	OGLE	22	14
CONTRACT NO. 64T85				
ILLINOIS FED. AID PROJECT				

TRAFFIC CONTROL FOR TRANSITION AREAS

CASE 2



- GENERAL NOTES
- THIS DETAIL IS TO BE USED IN CONJUNCTION WITH THE APPLICABLE MULTILANE TRAFFIC CONTROL AND PROTECTION STANDARD.
1. If applicable. Use if shown on applicable multilane Traffic Control and Protection Standard being used.
 2. If the work is within 2500 feet of the transition when the speed is > 40 mph, or 1500 feet for all other speeds, the detail shall be used.
 3. WORK ZONE SPEED LIMIT 55 SIGN ASSEMBLY shall be replaced with WORK ZONE SPEED LIMIT 45 SIGN ASSEMBLY where the workers are within 500 feet of the transition.

THIS TRAFFIC CONTROL DETAIL SHALL BE INCLUDED IN THE COST OF SPECIFIED TRAFFIC CONTROL STANDARDS OR ITEMS.

MODEL: District Standard-6 (Sheet)
FILE NAME: L:\EFK\men2\001570-00_D2\various01_IL251-644\interim\157000\CADD Data\Sheet\ID264785-shh-District_Standards.dgn



USER NAME = ruehara	DESIGNED - RTU	REVISED -
	DRAWN - RTU	REVISED -
	CHECKED - ARS	REVISED -
PLOT DATE = 1/12/2025	DATE - JAN 2025	REVISED -

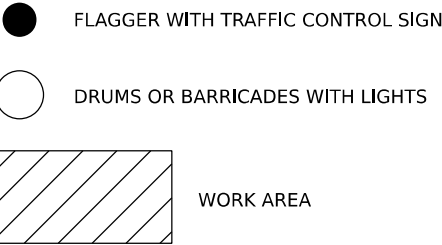
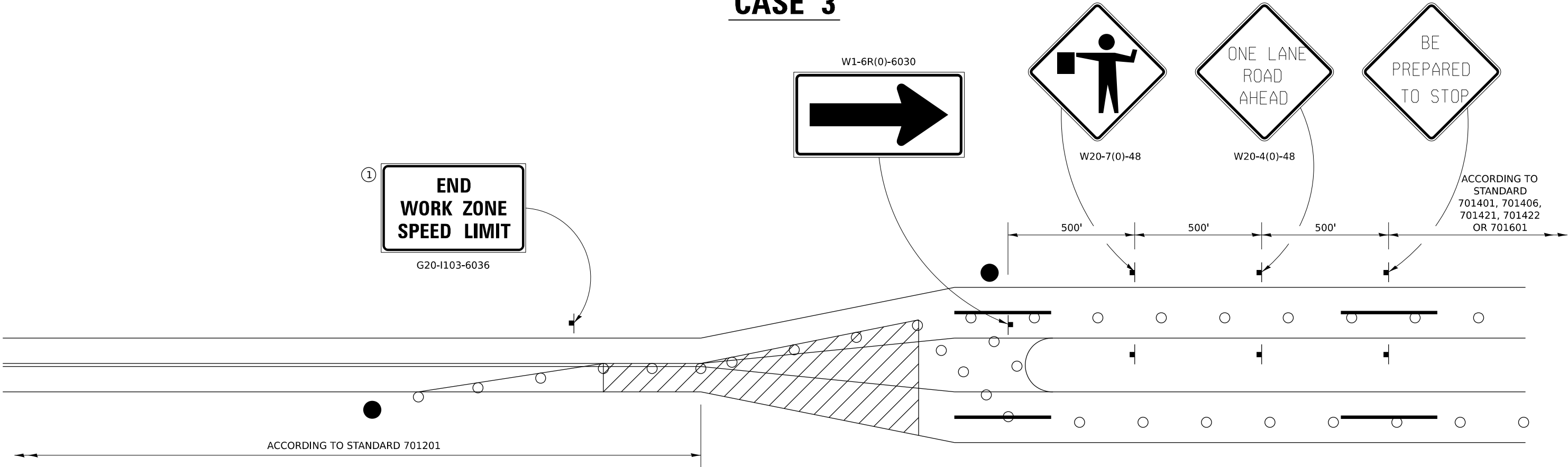
STATE OF ILLINOIS
DEPARTMENT OF TRANSPORTATION

REGION 2 / DISTRICT 2 STANDARD

SCALE: SHEET 6 OF 12 SHEETS STA. TO STA.

F.A.P RTE.	SECTION	COUNTY	TOTAL SHEETS	SHEET NO.
17A	(111&123)STY	OGLE	22	15
CONTRACT NO. 64T85				
ILLINOIS FED. AID PROJECT				

TRAFFIC CONTROL FOR TRANSITION AREAS
CASE 3



NOTE: STANDARDS 701301 AND 701306
SHALL NOT BE USED WITHIN 500 FEET
OF THE TRANSITION.

- GENERAL NOTES
THIS DETAIL IS TO BE USED IN CONJUNCTION
WITH THE APPLICABLE MULTILANE TRAFFIC
CONTROL AND PROTECTION STANDARD.
1. If applicable. Use if shown on applicable multilane Traffic Control and Protection Standard being used.
 2. If the work is within 2500 feet of the transition when the speed is > 40 mph, or 1500 feet for all other speeds, the detail shall be used.
 3. WORK ZONE SPEED LIMIT 55 SIGN ASSEMBLY shall be replaced with WORK ZONE SPEED LIMIT 45 SIGN ASSEMBLY where the workers are within 500 feet of the transition.
- THIS TRAFFIC CONTROL DETAIL SHALL BE INCLUDED
IN THE COST OF SPECIFIED TRAFFIC CONTROL
STANDARDS OR ITEMS.

MODEL: District Standard-7 (Sheet)
FILE NAME: L:\EFK\men\21001570-00_D2\various01_IL251-64\Interim\157000\CADD Data\Sheet\ID264T85-shh-District_Standards.dgn



USER NAME = ruehara	DESIGNED - RTU	REVISED -
	DRAWN - RTU	REVISED -
	CHECKED - ARS	REVISED -
PLOT DATE = 1/12/2025	DATE - JAN 2025	REVISED -

STATE OF ILLINOIS
DEPARTMENT OF TRANSPORTATION

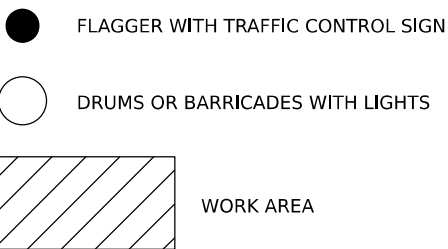
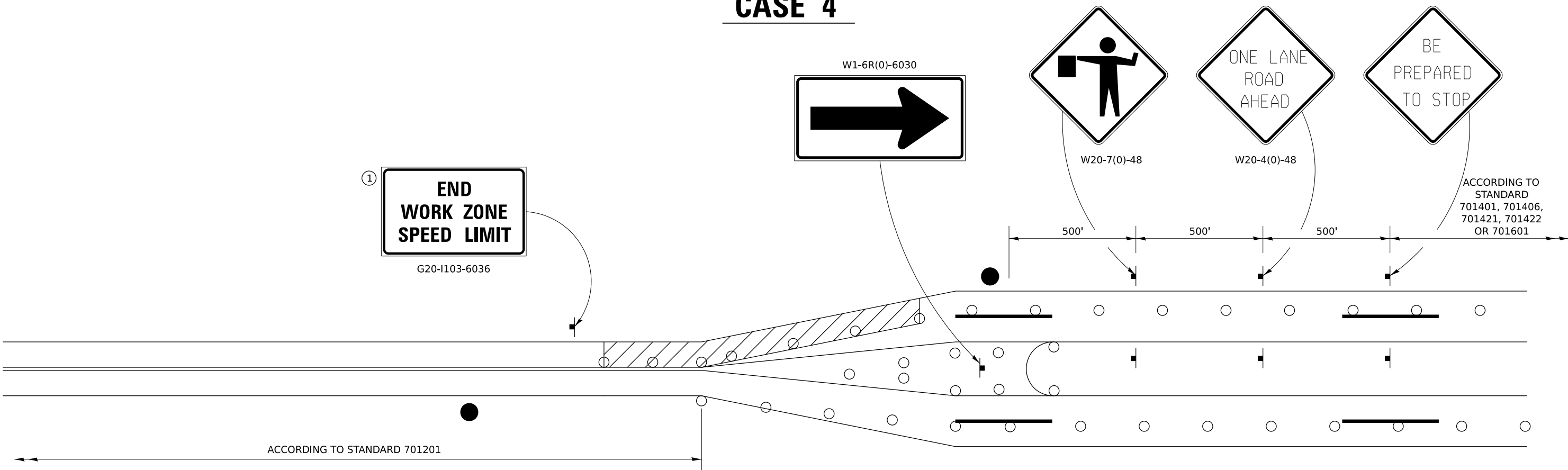
REGION 2 / DISTRICT 2 STANDARD

SCALE: SHEET 7 OF 12 SHEETS STA. TO STA.

F.A.P RTE.	SECTION	COUNTY	TOTAL SHEETS	SHEET NO.
17A	(111&123)STY	OGLE	22	16
CONTRACT NO. 64T85				
ILLINOIS FED. AID PROJECT				

TRAFFIC CONTROL FOR TRANSITION AREAS

CASE 4



NOTE: STANDARDS 701301 AND 701306
SHALL NOT BE USED WITHIN 500 FEET
OF THE TRANSITION.

GENERAL NOTES
THIS DETAIL IS TO BE USED IN CONJUNCTION
WITH THE APPLICABLE MULTILANE TRAFFIC
CONTROL AND PROTECTION STANDARD.

1. If applicable. Use if shown on applicable multilane Traffic Control and Protection Standard being used.
2. If the work is within 2500 feet of the transition when the speed is > 40 mph, or 1500 feet for all other speeds, the detail shall be used.
3. WORK ZONE SPEED LIMIT 55 SIGN ASSEMBLY shall be replaced with WORK ZONE SPEED LIMIT 45 SIGN ASSEMBLY where the workers are within 500 feet of the transition.

THIS TRAFFIC CONTROL DETAIL SHALL BE INCLUDED
IN THE COST OF SPECIFIED TRAFFIC CONTROL
STANDARDS OR ITEMS.

MODEL: District Standard-8 (Sheet)
FILE NAME: L:\EFK\men2\001570-00_D2\various01_IL251-484\interim\157000\CADD Data\Sheet\ID264T85-shh-District_Standards.dgn



USER NAME = ruehara	DESIGNED - RTU	REVISED -
	DRAWN - RTU	REVISED -
	CHECKED - ARS	REVISED -
PLOT DATE = 1/12/2025	DATE - JAN 2025	REVISED -

STATE OF ILLINOIS
DEPARTMENT OF TRANSPORTATION

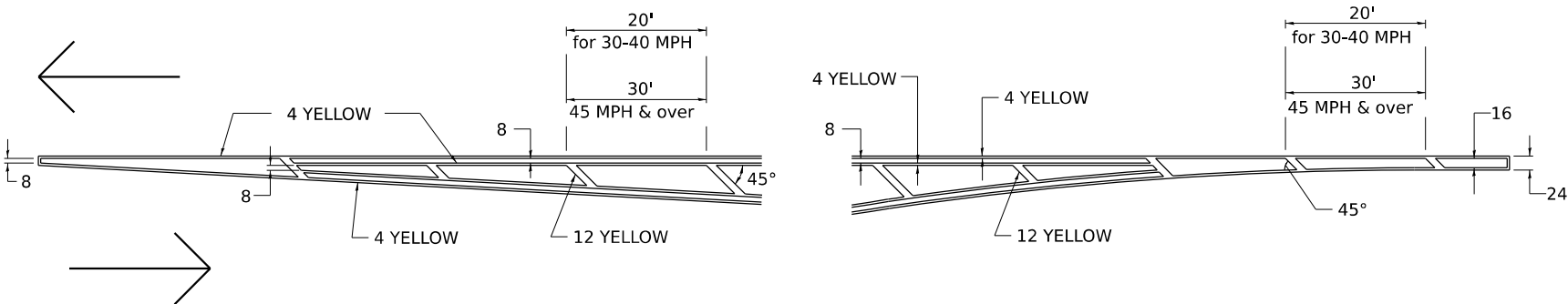
REGION 2 / DISTRICT 2 STANDARD

SCALE: SHEET 8 OF 12 SHEETS STA. TO STA.

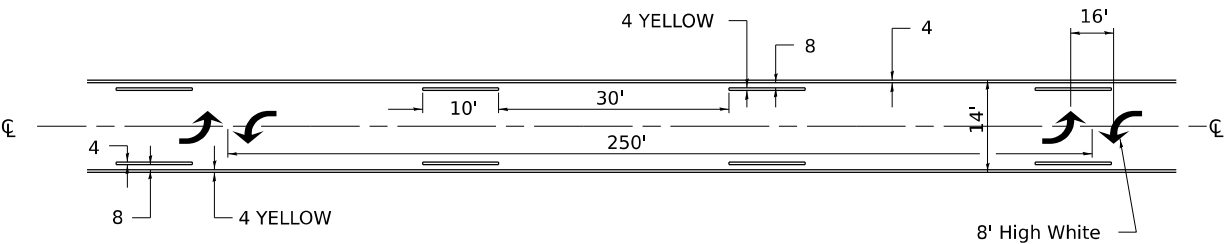
F.A.P. RTE.	SECTION	COUNTY	TOTAL SHEETS	SHEET NO.
17A	(111&123)STY	OGLE	22	17
CONTRACT NO. 64T85				
ILLINOIS FED. AID PROJECT				

TYPICAL PAVEMENT MARKINGS

TYPICAL PAVEMENT MARKING FOR FLUSH MEDIAN
AT LEFT TURN LANE

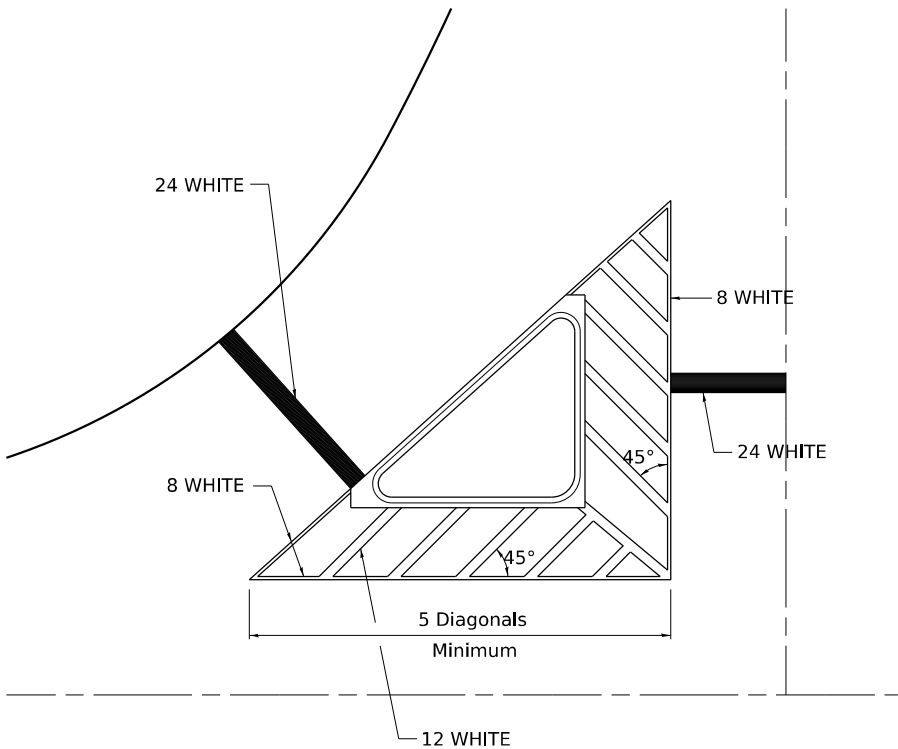


MEDIAN PAVEMENT MARKING

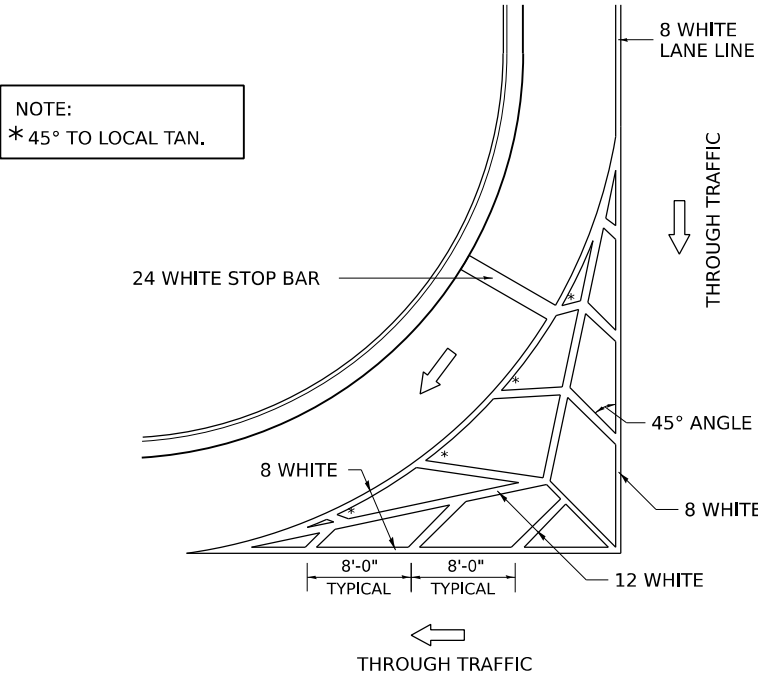


** ALL DIMENSIONS ARE IN INCHES UNLESS OTHERWISE NOTED.

TYPICAL ISLAND
OFFSET SHOULDER WIDTH

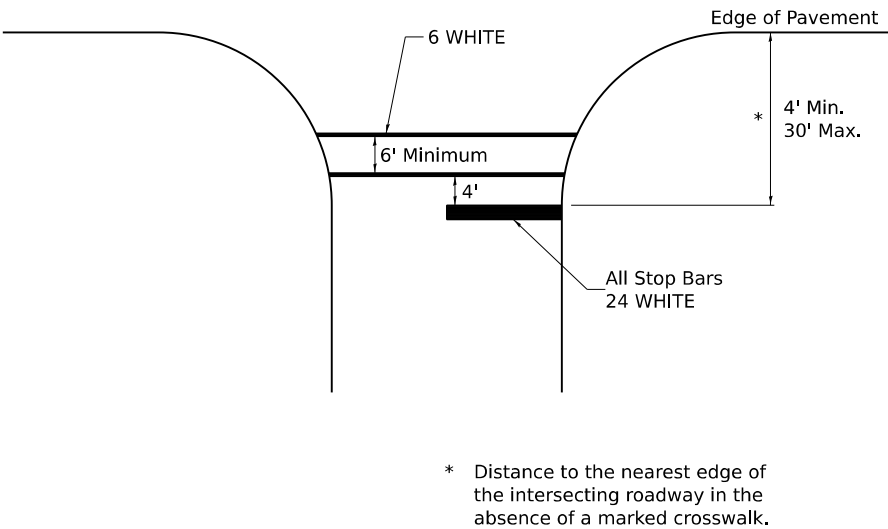


TYPICAL MARKING FOR
PAINTED ISLANDS



STANDARD CROSSWALK MARKING

See Schedules for Locations



MODEL: District Standard-9 (Sheet)
FILE NAME: L:\EKF\men2\001570-00_D2\various01_IL251-484\interim\157000\CADD Data\Sheet\ID264785-sh-District_Standards.dgn



USER NAME = ruehara	DESIGNED - RTU	REVISED -
	DRAWN - RTU	REVISED -
	CHECKED - ARS	REVISED -
PLOT DATE = 1/12/2025	DATE - JAN 2025	REVISED -

STATE OF ILLINOIS
DEPARTMENT OF TRANSPORTATION

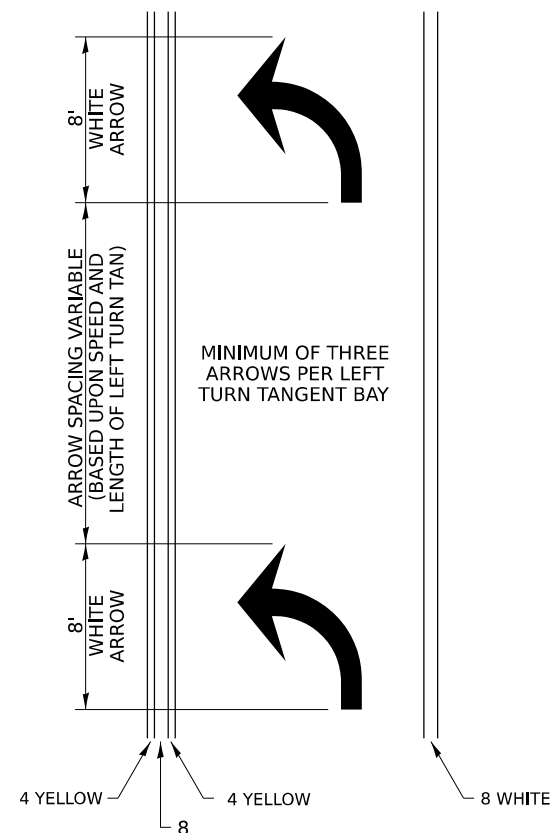
REGION 2 / DISTRICT 2 STANDARD

SCALE: SHEET 9 OF 12 SHEETS STA. TO STA.

F.A.P RTE.	SECTION	COUNTY	TOTAL SHEETS	SHEET NO.
17A	(111&123)STY	OGLE	22	18
CONTRACT NO. 64T85				
ILLINOIS FED. AID PROJECT				

TYPICAL PAVEMENT MARKINGS

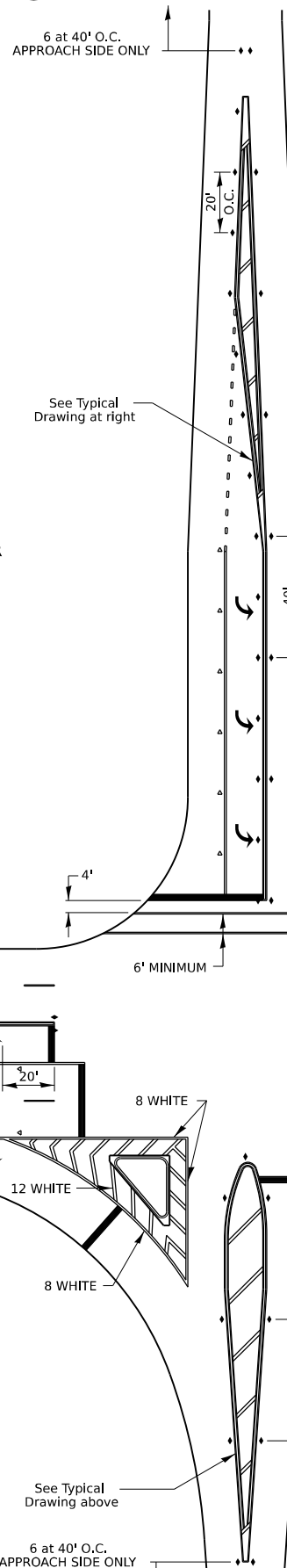
ARROW LAYOUT



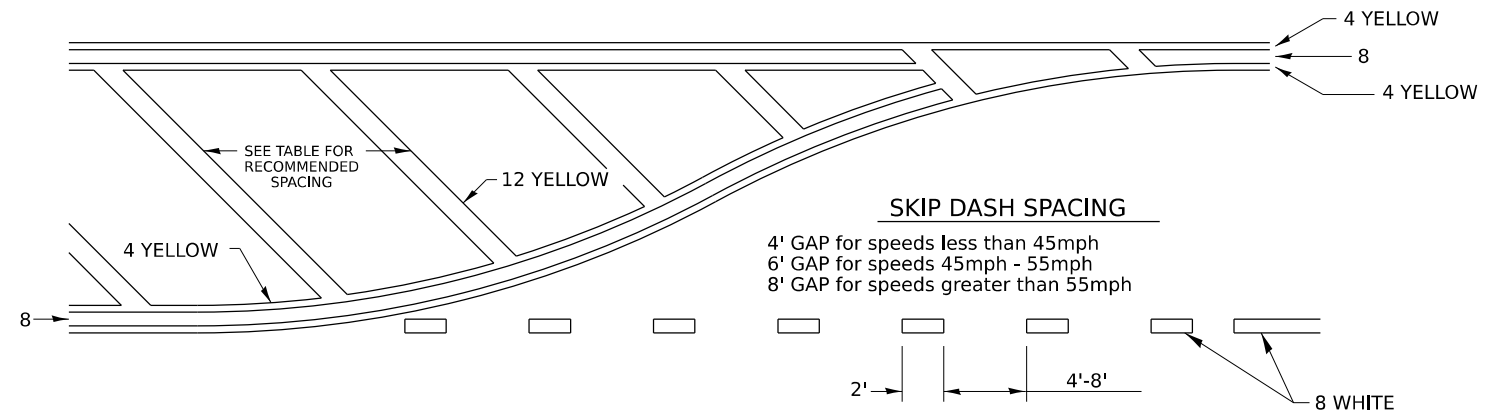
SYMBOLS

- ◀ ONE-WAY
AMBER MARKER
- ◁ ONE-WAY
CRYSTAL MARKER
- ◆ TWO-WAY
AMBER MARKER

ALL DIMENSIONS ARE IN INCHES
UNLESS OTHERWISE NOTED.



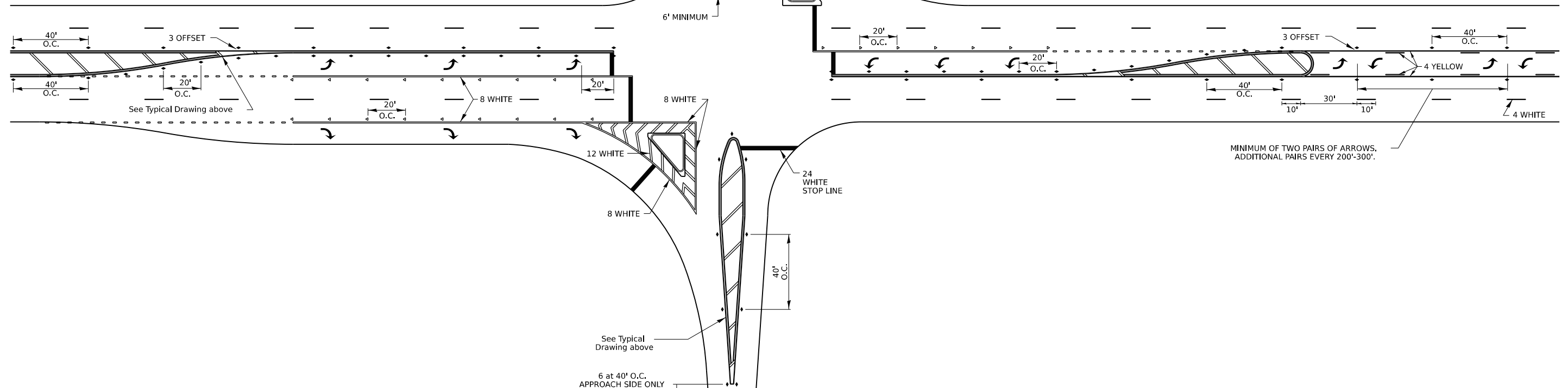
TYPICAL PAVEMENT MARKING FOR FLUSH MEDIAN



RECOMMENDED SPACING BETWEEN DIAGONALS (IN FEET)

Speed Limit Range	Continuous Median Area	Intersection Channelization	Objects (Islands)
less than 30MPH	50'	15'	10'
30-40MPH	75'	20'	15'
45MPH & over	75'	30'	20'

NOTE: if the spacing recommended in the Table does not permit at least five diagonal lines in the area being marked, the spacing from the next lowest speed range should be used. The recommended spacing is measured parallel to the pavement center line.



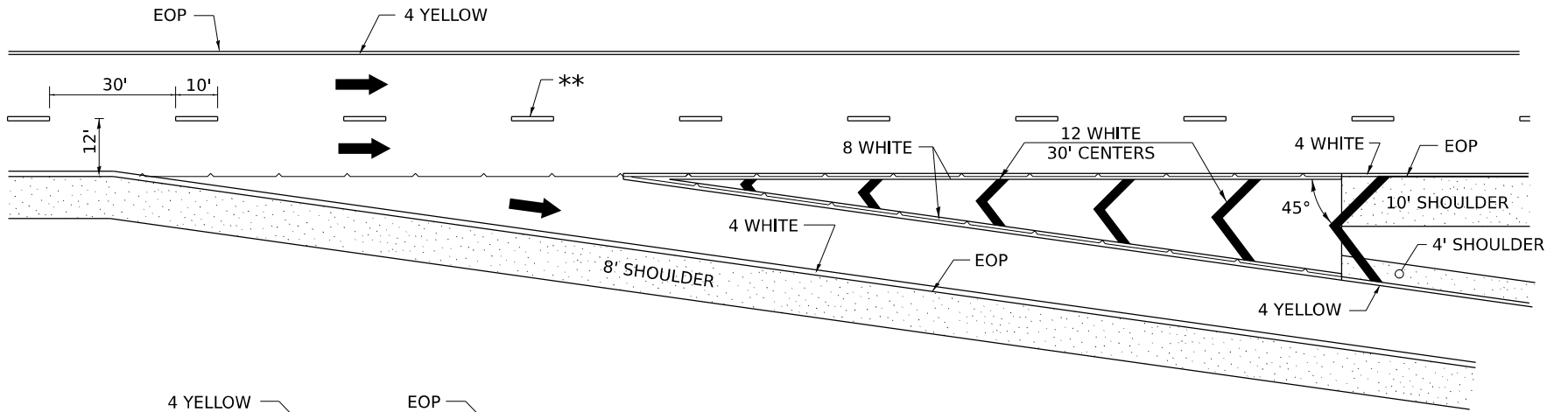
TYPICAL PAVEMENT MARKINGS

**** 6" WHITE ON INTERSTATES, WHERE THE SPPED LIMIT IS 65 MPH, OR WHEN DIRECTED BY THE ENGINEER.**

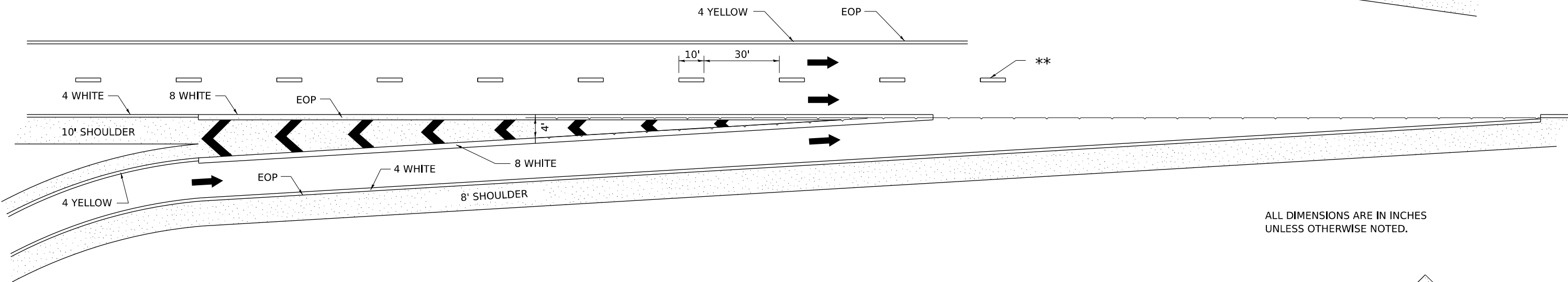
4" WIDE AT ALL OTHER LOCATIONS.

NOTE: GORE HATCHING PLACED ONLY
WHEN SCHEDULED IN THE PLANS

EXIT RAMP

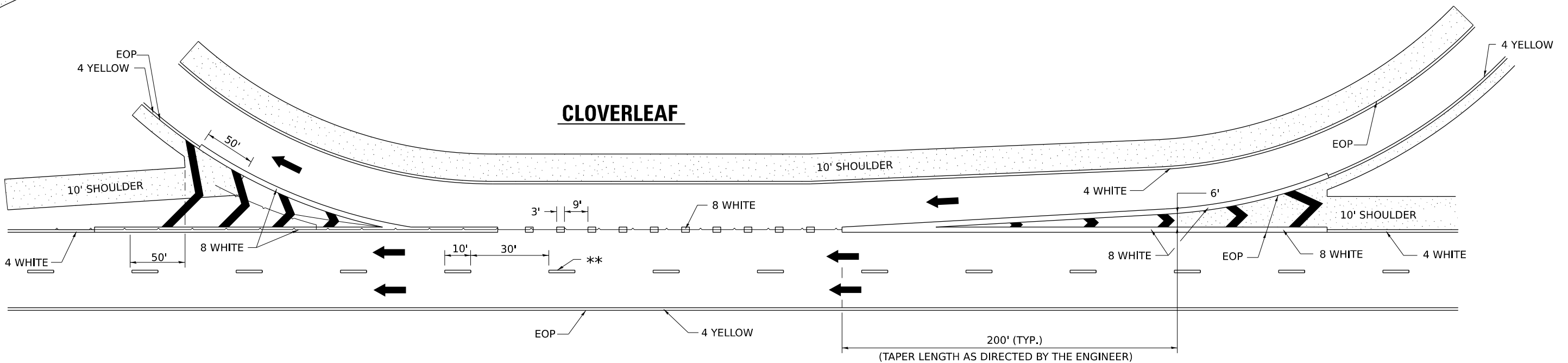


ENTRANCE RAMP

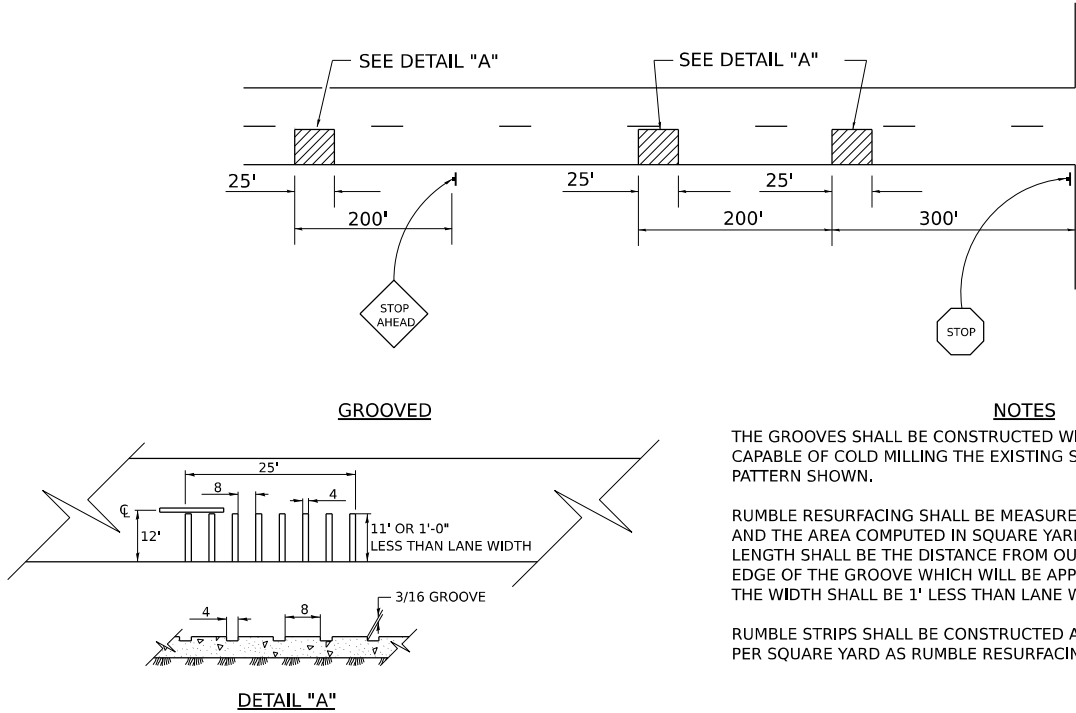


ALL DIMENSIONS ARE IN INCHES
UNLESS OTHERWISE NOTED.

CLOVERLEAF



RUMBLE RESURFACING



REVISED - 10-05-11

NOTES

THE GROOVES SHALL BE CONSTRUCTED WITH A MILLING MACHINE CAPABLE OF COLD MILLING THE EXISTING SURFACE IN THE PATTERN SHOWN.

RUMBLE RESURFACING SHALL BE MEASURED FOR PAYMENT IN PLACE AND THE AREA COMPUTED IN SQUARE YARDS. THE LENGTH SHALL BE THE DISTANCE FROM OUTSIDE EDGE TO OUTSIDE EDGE OF THE GROOVE WHICH WILL BE APPROXIMATELY 25'. THE WIDTH SHALL BE 1' LESS THAN LANE WIDTH.

RUMBLE STRIPS SHALL BE CONSTRUCTED AS SHOWN AND PAID FOR PER SQUARE YARD AS RUMBLE RESURFACING.

ALL DIMENSIONS ARE IN INCHES UNLESS OTHERWISE NOTED.

RUMBLE RESURFACING 91.4

MODEL: District Standard-13 (Sheet)
FILE NAME: L:\EFK\men\21001570-00_D2\various01_IL251-484\interim\157000\CADD Data\Sheet\ID264T85-sh-District_Standards.dgn

	USER NAME = ruehara	DESIGNED - RTU	REVISED -	STATE OF ILLINOIS DEPARTMENT OF TRANSPORTATION	REGION 2 / DISTRICT 2 STANDARD			F.A.P RTE.	SECTION	COUNTY	TOTAL SHEETS	SHEET NO.
		DRAWN - RTU	REVISED -					17A	(111&123)STY	OGLE	22	22
		CHECKED - ARS	REVISED -					CONTRACT NO. 64T85				
	PLOT DATE = 1/24/2025	DATE - JAN 2025	REVISED -		SCALE:	SHEET 13	OF 13	SHEETS	STA.	TO STA.	ILLINOIS FED. AID PROJECT	