

CH RTE.	SECTION	COUNTY	TOTAL SHEETS	SHEET NO.
12	20-00097-00-RS	WASHINGTON	10	1
		ILLINOIS		CONTRACT NO. 97857

COUNTY HIGHWAY 12 RESURFACING WASHINGTON COUNTY, ILLINOIS

INDEX OF SHEETS

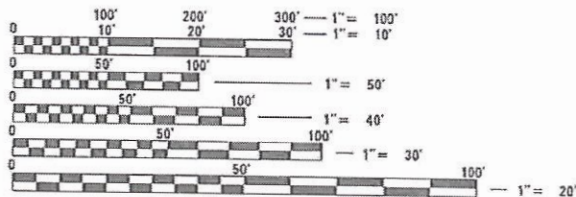
SHEET NUMBER	DESCRIPTION
1	COVER SHEET
2	GENERAL NOTES
3	SUMMARY OF QUANTITIES
4	QUANTITY SCHEDULES
5-6	TYPICAL SECTIONS
7-10	PLAN SHEETS

HIGHWAY STANDARDS

000001-08	STANDARD SYMBOLS, ABBREVIATIONS, AND PATTERNS
001006	DECIMAL OF AN INCH AND OF A FOOT
442201-03	CLASS C AND D PATCHES
482011-03	HMA SHOULDER STRIPS/SHOULDERS WITH RESURFACING
642006-01	SHOULDER RUMBLE STRIPS, 8IN.
701201-05	LANE CLOSURE, 2L, 2W, DAY ONLY, FOR SPEEDS ≥ 45 MPH
701306-04	LANE CLOSURE, 2L, 2W, SLOW MOVING OPERATIONS DAY ONLY, FOR SPEEDS ≥ 45 MPH
701311-03	LANE CLOSURE, 2L, 2W MOVING OPERATIONS - DAY ONLY
701901-10	TRAFFIC CONTROL DEVICES
780001-05	TYPICAL PAVEMENT MARKINGS
781001-04	TYPICAL APPLICATIONS RAISED REFLECTIVE PAVEMENT MARKERS
BLR24-2	MAILBOX TURNOUT FOR LOCAL ROADS

TRAFFIC DATA

FUNCTIONAL CLASS: MAJOR COLLECTOR
ADT: CURRENT (2025) 1550
20-YEAR (2045) 1755
DESIGN SPEED: 55 MPH

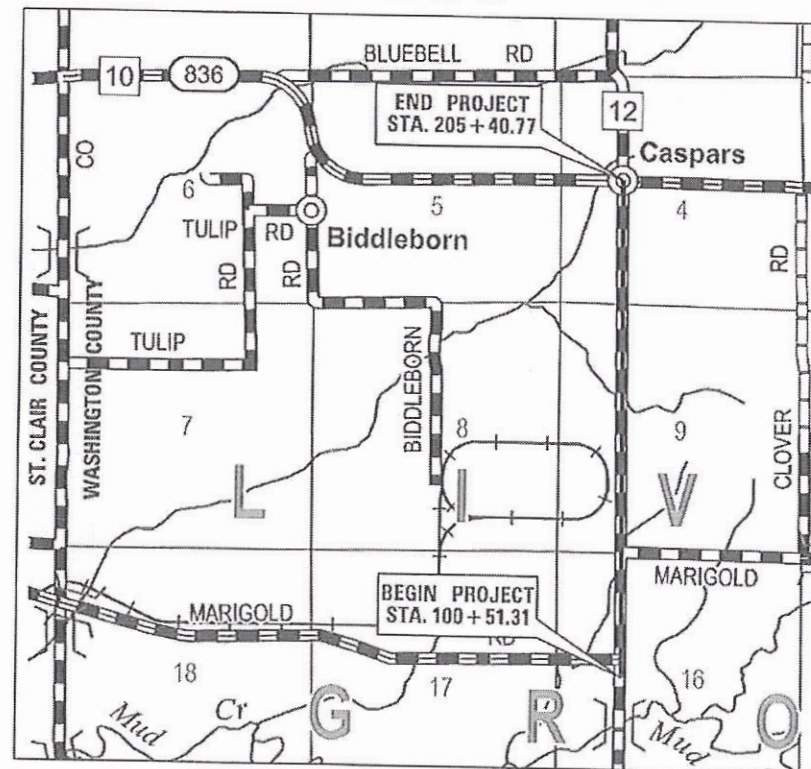


FULL SIZE PLANS HAVE BEEN PREPARED USING STANDARD ENGINEERING SCALES. REDUCED SIZED PLANS WILL NOT CONFORM TO STANDARD SCALES. IN MAKING MEASUREMENTS ON REDUCED PLANS, THE ABOVE SCALES MAY BE USED.

J.U.L.I.E.
JOINT UTILITY LOCATION INFORMATION FOR EXCAVATORS
1-800-892-0123
OR 811

CH 12, COUNTY HIGHWAY 12
SECTION 20-00097-00-RS
PROJECT HLL1(382)
LAFO RESURFACING
WASHINGTON COUNTY
STP-R FUNDS

C-98-019-24



GROSS LENGTH = 10,489.46 FEET (1.987 MILES)
NET LENGTH = 10,489.46 FEET (1.987 MILES)



LOCATION OF SECTION INDICATED THUS: -

HMG
ENGINEERS
IL PROF DESIGN FIRM 184.000899

WASHINGTON COUNTY	
SUBMITTED	2-4-2025
COUNTY ENGINEER	DATE
STATE OF ILLINOIS DEPARTMENT OF TRANSPORTATION	
PASSED	2-19-2025
DISTRICT 8 ENGINEER OF LOCAL ROADS AND STREETS	DATE
RELEASING FOR BIO BASED ON LIMITED REVIEW	2-19-2025
REGION 5 ENGINEER	DATE



TYLER A. KRUEP, P.E.
ILLINOIS REGISTERED ENGINEER NO. 062-071547
REGISTRATION EXPIRES NOV. 30, 2025

2/5/2025

PRINTED BY THE AUTHORITY
OF THE STATE OF ILLINOIS

MODEL: Default
FILE NAME: T18539_WashCo_C4_12CAD_Sheets18539_INDEX.dgn

GENERAL NOTES

ALL CONSTRUCTION SHALL BE IN ACCORDANCE WITH ILLINOIS DEPARTMENT OF TRANSPORTATION STANDARD SPECIFICATIONS FOR ROAD AND BRIDGE CONSTRUCTION, ADOPTED JANUARY 1, 2022.

THE CONTRACTOR SHALL VERIFY ALL DIMENSIONS AND CONDITIONS IN THE FIELD PRIOR TO CONSTRUCTION AND ORDERING OF MATERIALS.

THE THICKNESS OF THE HOT-MIX ASPHALT SHOWN ON THE PLANS IS NOMINAL THICKNESS. DEVIATIONS FROM THE NOMINAL THICKNESS WILL BE PERMITTED WHEN SUCH DEVIATIONS OCCUR DUE TO IRREGULARITIES IN THE EXISTING SURFACE ON WHICH THE HOT-MIX IS PLACED.

ALL EARTHEN AREAS DISTURBED FOR ANY REASON SHALL BE SEEDED AND RESTORED AT THE CONTRACTOR'S EXPENSE.

PROPOSED PAVEMENT MARKINGS SHALL MATCH EXISTING PAVEMENT MARKINGS AND THE LANES SHALLL BE STRIPED 11' WIDE. THE BASELINE AND STATIONING SHOWN IS INTENDED TO BE A "BEST FIT" OF THE EXISTING ALIGNMENT.

HMA SURFACE COURSE SHALL BE PLACED OVER THE EXISTING HMA SHOULDERS CONCURRENTLY WITH THE MAINLINE OVERLAY.

A NOMINAL QUANTITY OF 50 TONS OF AGGREGATE FOR TEMPORARY ACCESS HAS BEEN INCLUDED IN THE PLANS FOR USE IN PROVIDING ACCESS TO ENTRANCES AND PRIVATE PROPERTIES ALONG THE PROJECT DURING CONSTRUCTION.

THE FOLLOWING CONSTANTS WERE USED IN THE CALCULATION OF QUANTITIES FOR THIS PROJECT:

HOT-MIX ASPHALT 112 LBS/S.Y./INCH
BITUMINOUS MATERIALS (TACK COAT) 0.05 LB/S.F. (MILLED SURFACE)

THE CONTRACTOR SHALL BE RESPONSIBLE FOR AN ON-SITE INSPECTION PRIOR TO SUBMITTING A BID ON THIS PROJECT. UPON RECEIPT OF A BID, IT SHALL BE ASSUMED THAT THE CONTRACTOR IS FULLY FAMILIAR WITH THE CONSTRUCTION SITE.

NO SURVEY WAS PERFORMED FOR THIS PROJECT AND THE PLANS WERE CREATED FROM RECORD DRAWINGS AND AVAILABLE DOCUMENTS. THEREFORE, STATION VALUES ARE APPROXIMATE ONLY. SPECIFIC LOCATIONS OF WORK (EXAMPLE: PATCHING) SHALL BE COORDINATED BETWEEN THE CONTRACTOR AND ENGINEER DURING CONSTRUCTION.

A NOMINAL QUANTITY OF 500 SQUARE YARDS OF CLASS C PATCHES, TYPE IV, 8" AND ASSOCIATED SUBBASE GRANULAR MATERIAL, TYPE A, 6" IS INCLUDED IN THIS PROJECT. THIS QUANTITY SHALL BE USED AT THE ENGINEER'S DISCRETION TO REPAIR LOCATIONS OF UNIDENTIFIED BASE FAILURES THAT ARE ENCOUNTERED DURING CONSTRUCTION. THIS QUANTITY MAY BE USED IN FULL OR MAY NOT BE USED AT ALL. THE CONTRACTOR SHALL TAKE THIS INTO CONSIDERATION WHEN SUBMITTING A BID.

NO OVERNIGHT LANE CLOSURES WILL BE ALLOWED ON THIS PROJECT. THE CONTRACTOR SHALL OPEN ALL LANES TO TRAFFIC AT THE END OF EACH WORKDAY.

HIGH-EARLY STRENGTH CONCRETE SHALL BE USED FOR ALL PAVEMENT PATCHES. THE CONTRACTOR WILL BE ALLOWED TO ADJUST PATCH SIZES TO MEET DAILY SCHEDULING NEEDS.

UTILITY INFORMATION

ILLINOIS STATE LAW REQUIRES A 48 HOUR NOTICE BE GIVEN TO ALL UTILITIES BEFORE DIGGING. FIELD MARKING OF FACILITIES MAY BE OBTAINED BY CONTACTING J.U.L.I.E. OR FOR NON-J.U.L.I.E. MEMBERS, THE UTILITY COMPANY DIRECTLY. AGENCIES KNOWN TO HAVE FACILITIES WITHIN THE PROJECT AREA ARE AS FOLLOWS:

NAME OF UTILITY	UTILITY TYPE	PHONE NUMBER	CONTACT NAME
* AMEREN ILLINOIS	ELECTRIC/GAS	618-301-5305	NATHAN HILL
* AT&T	COMMUNICATIONS	217-381-4284	VANESSA ROSS
* CLEARWAVE	COMMUNICATIONS	843-384-9345	MARK RIGGS
* EGYPTIAN TELEPHONE	COMMUNICATIONS	618-774-1000	SCOTT GREMMELS
* FRONTIER	COMMUNICATIONS	815-895-1515	KALIN HINSHAW
* PRAIRIE STATE GENERATING CO.	UNKNOWN	618-792-4534	CHRIS GROHMANN
* TRI-COUNTY ELECTRIC	ELECTRIC	618-244-5151	DANNY HOPFINGER
* WASHINGTON COUNTY	WATER	618-327-4454	MATT ENGELE

MEMBERS OF J.U.L.I.E. 800-892-0123 ARE INDICATED BY *. NON-J.U.L.I.E. MEMBERS MUST BE NOTIFIED INDIVIDUALLY.

FOR UTILITY LOCATION PURPOSES, THIS PROECT IS LOCATED IN SECTIONS 4, 9, & 16 OF TOWNSHIP 3S, RANGE 5W.

COMMITMENTS

ASPHALT MILLINGS SHALL BE TRANSPORTED BY THE CONTRACTOR TO THESE LOCATIONS AND SHALL BECOME PROPERTY OF WASHINGTON COUNTY

- 500 TONS TO BE STOCKPILED AT 396 WEST SOUTH STREET, OAKDALE, ILL 62258, APPROXIMATELY 12 MILES EAST OF THE PROJECT LOCATION.
- 400 TONS TO BE STOCKPILED AT A LOCATION DESIGNATED BY WASHINGTON COUNTY IMMEDIATELY ADJACENT TO THE PRAIRIE STATE ENERGY CAMPUS, WHICH IS WITHIN THE PROJECT CORRIDOR.
- THE REMAINDER OF THE MILLINGS TO BE STOCKPILED AT 1224 MARISSA ROAD, MARISSA, IL 62257, APPROXIMATELY 2 MILES SOUTHEAST OF THE PROJECT LOCATION.
- WASHINGTON COUNTY WILL BE RESPONSIBLE FOR PROVIDING MANPOWER AND EQUIPMENT TO STOCKPILE THE MATERIAL.

HMA MIX CHART

MIXTURE USE:	SURFACE
AC/PG:	PG 64-22
RAP% (MAX):	SEE SPEC.
DESIGN AIR VOIDS:	4.0% @ Ndes=50
MIXTURE COMPOSITION:	IL-9.5
FRICTION AGGREGATE:	MIXTURE "C"
MIXTURE WEIGHT:	112 LBS/SQ. YD./IN.



IL PROF DESIGN FIRM 184.000899

USER NAME = bschneider	DESIGNED -	REVISED -
	DRAWN - BMS	REVISED -
PLOT SCALE = 40.0000 ' / in.	CHECKED -	REVISED -
PLOT DATE = 6/14/2024	DATE -	REVISED -

COUNTY HIGHWAY 12 RESURFACING
WASHINGTON COUNTY, ILLINOIS

GENERAL NOTES, UTILITY INFORMATION, AND COMMITMENTS

SCALE: SHEET 1 OF 1 SHEETS STA. TO STA.

CH RTE.	SECTION	COUNTY	TOTAL SHEETS	SHEET NO.
12	20-00097-00-R5	WASHINGTON	10	2
		CONTRACT NO. 97857		
		ILLINOIS	FED. AID PROJECT	

Model: Default
File Name: H08539_Visuals_C012.dwg
Sheet: 08539 - QUANTITIES.dgn



IL PROF DESIGN FIRM 184,000899

USER NAME = bschneider
PLOT SCALE = 100.0000' / 1in.
PLOT DATE = 6/17/2024

DESIGNED -
DRAWN - BMS
CHECKED -
DATE -

REVISED -
REVISED -
REVISED -
REVISED -

COUNTY HIGHWAY 12 RESURFACING
WASHINGTON COUNTY, ILLINOIS

SUMMARY OF QUANTITIES

SCALE: NTS SHEET 1 OF 1 SHEETS STA. TO STA.

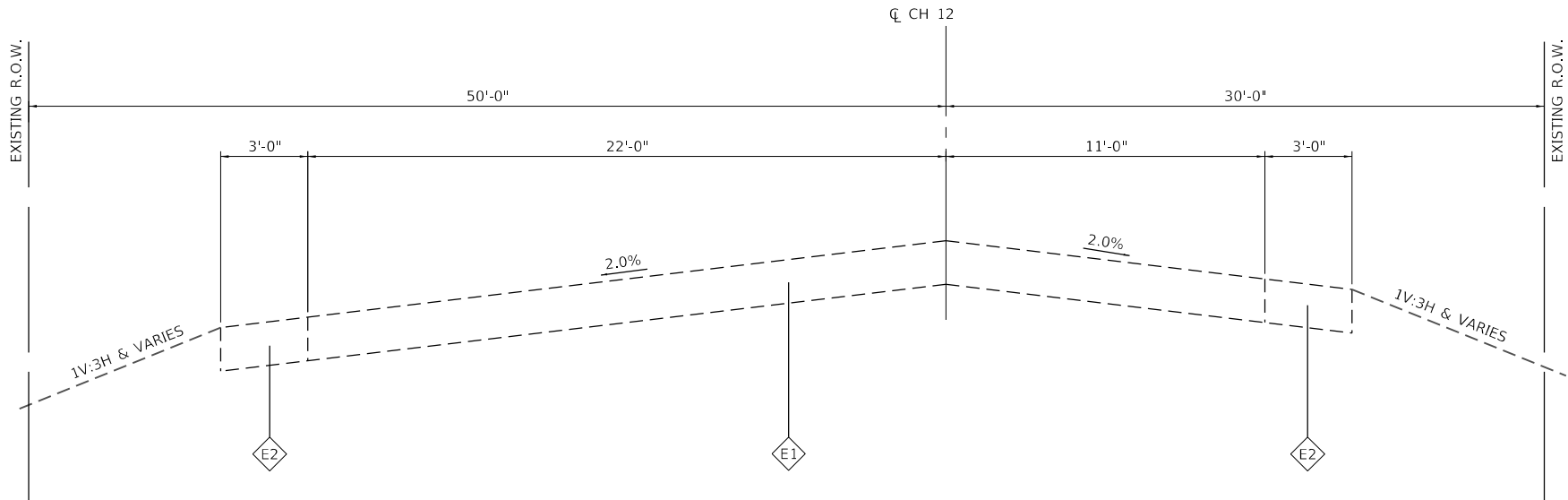
CH RTE	SECTION	COUNTY	TOTAL SHEETS	SHEET NO.
12	20-00097-00-R5	WASHINGTON	10	3
CONTRACT NO. 97857				
ILLINOIS FED. AID PROJECT				

CODE NO.	ITEM	UNIT	TOTAL QUANTITY	CONSTR. CODE
				ROADWAY
				0005 NONE
31100500	SUBBASE GRANULAR MATERIAL, TYPE A 6"	SQ YD	1418	1418
40201000	AGGREGATE FOR TEMPORARY ACCESS	TON	50	50
40800290	BITUMINOUS MATERIALS (TACK COAT)	POUND	15004	15004
40800370	LONGITUDINAL JOINT SEALANT	FOOT	10950	10950
40800405	MATERIAL TRANSFER DEVICE	TON	3268	3268
40800990	TEMPORARY RAMP	SQ YD	265	265
40604050	HOT-MIX ASPHALT SURFACE COURSE, IL-9.5, MIX "C", N50	TON	3268	3268
44000156	HOT-MIX ASPHALT SURFACE REMOVAL, 1 3/4"	SQ YD	33343	33343
44201335	CLASS C PATCHES, TYPE IV, 8 INCH	SQ YD	1418	1418
64200108	SHOULDER RUMBLE STRIPS, 8 INCH	FOOT	7332	7332
67100100	MOBILIZATION	L SUM	1	1
70100450	TRAFFIC CONTROL AND PROTECTION, STANDARD 701201	L SUM	1	1
70100460	TRAFFIC CONTROL AND PROTECTION, STANDARD 701306	L SUM	1	1
70300100	SHORT TERM PAVEMENT MARKING	FOOT	960	960

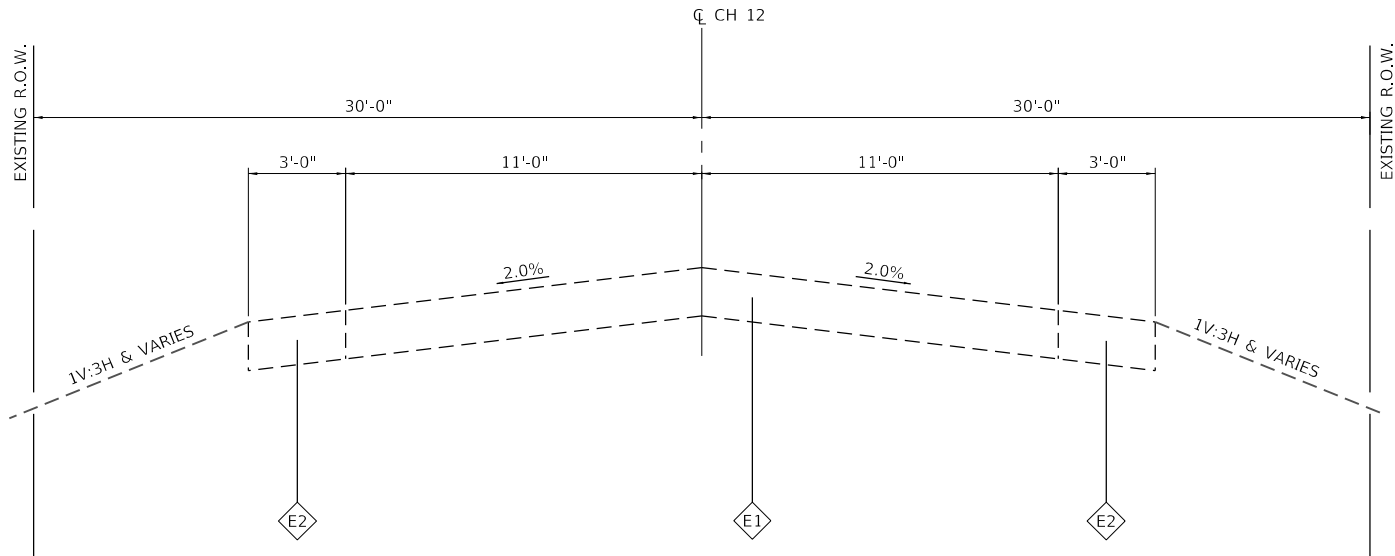
CODE NO.	ITEM	UNIT	TOTAL QUANTITY	CONSTR. CODE
				ROADWAY
				0005 NONE
70300150	SHORT TERM PAVEMENT MARKING REMOVAL	SQ FT	320	320
70300211	TEMPORARY PAVEMENT MARKING LETTERS AND SYMBOLS - PAINT	SQ FT	47	47
70300241	TEMPORARY PAVEMENT MARKING - LINE 6"- PAINT	FOOT	30939	30939
* 78000100	THERMOPLASTIC PAVEMENT MARKING - LETTERS AND SYMBOLS	SQ FT	47	47
* 78000400	THERMOPLASTIC PAVEMENT MARKING - LINE 6"	FOOT	30939	30939
* 78100100	RAISED REFLECTIVE PAVEMENT MARKER	EACH	50	50
78300200	RAISED REFLECTIVE PAVEMENT MARKER REMOVAL	EACH	50	50
# Z0076600	TRAINEES	HOURL	500	
78300202	PAVEMENT MARKING REMOVAL - WATER BLASTING	SQ FT	15470	15470
# Z0076604	TRAINEES TRAINING PROGRAM GRADUATE	HOURL	500	
X6420112	CENTER LINE - RUMBLE STRIP - 8"	FOOT	3999	3999

* SPECIALTY ITEM

0042



EXISTING TYPICAL SECTION
STA. 103+00.00 TO 107+87.86



EXISTING TYPICAL SECTION
STA 100+51.31 TO 103+00.00
STA 107+87.86 TO 206+40.77

TYPICAL SECTION LEGEND

- E1 EX HMA PAVEMENT (UNKNOWN THICKNESS)
- E2 EX HMA SHLDS (VARIABLE THICKNESS)
- P1 PR HMA SURF REM, 1.75"
- P2 PR LONGITUDINAL JT SEALANT
- P3 PR BIT MAT (TACK COAT)
- P4 PR HMA SURF CSE, 1.75"
- P5 PR CL RUMBLE STRIP, 8"
- P6 PR SHLD RUMBLE STRIP, 8"
- P7 PR RAISED REFLECTIVE PM MARKER

MODEL: Default
FILE NAME: T103539_WashCo_CH 12CAD_Sheets18539_TYPICALS.dgn

HMG
ENGINEERS

IL PROF DESIGN FIRM 184,000899

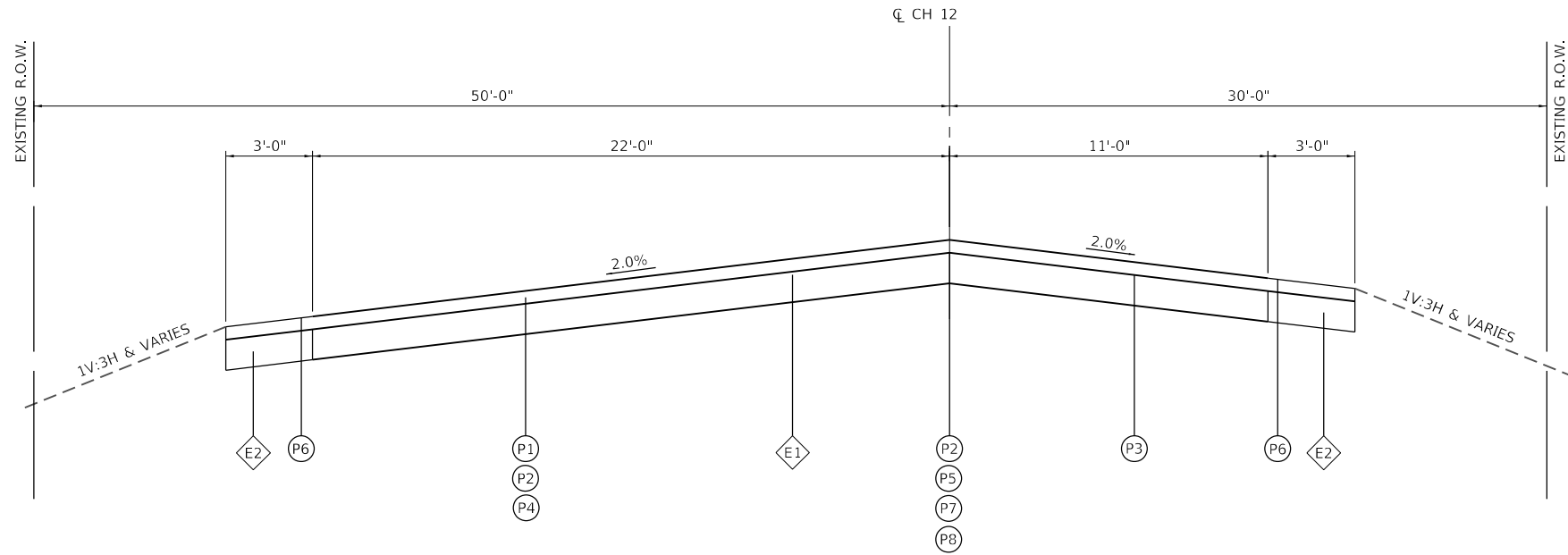
USER NAME	= bschneider	DESIGNED	-	REVISED	-
		DRAWN	- BMS	REVISED	-
PLOT SCALE	= 40,0000 ' / in.	CHECKED	-	REVISED	-
PLOT DATE	= 6/20/2024	DATE	-	REVISED	-

**COUNTY HIGHWAY 12 RESURFACING
WASHINGTON COUNTY, ILLINOIS**

EXISTING TYPICAL SECTIONS

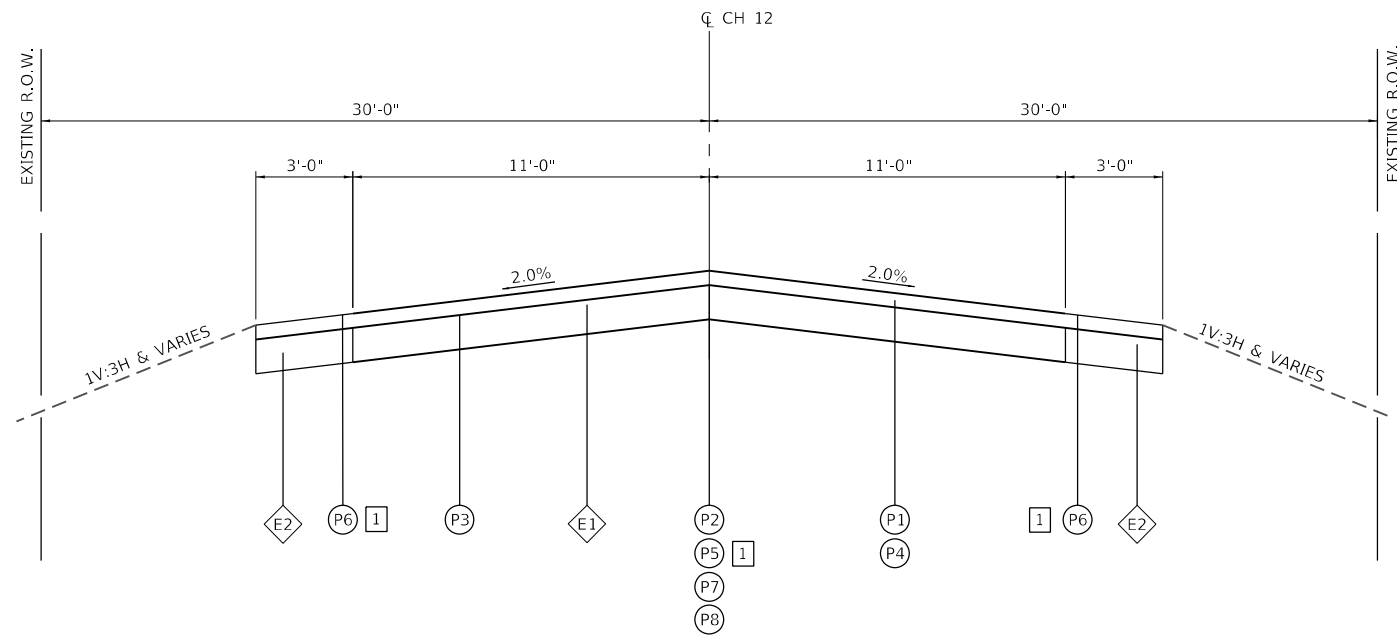
SCALE: NTS SHEET 1 OF 2 SHEETS STA. 100+51.31 TO STA. 206+40.77

CH RTE.	SECTION	COUNTY	TOTAL SHEETS	SHEET NO.
12	20-00097-00-RS	WASHINGTON	10	5
CONTRACT NO. 97857				
ILLINOIS FED. AID PROJECT				



PROPOSED TYPICAL SECTION

STA. 103+00.00 TO 107+87.86



PROPOSED TYPICAL SECTION

STA 100+51.31 TO 103+00.00
STA 107+87.86 TO 205+40.77

TYPICAL SECTION LEGEND

- E1 EX HMA PAVEMENT (UNKNOWN THICKNESS)
- E2 EX HMA SHLDS (VARIABLE THICKNESS)
- P1 PR HMA SURF REM, 1.75"
- P2 PR LONGITUDINAL JT SEALANT
- P3 PR BIT MAT (TACK COAT)
- P4 PR HMA SURF CSE, 1.75"
- P5 PR CH RUMBLE STRIP, 8"
- P6 PR SHLD RUMBLE STRIP, 8"
- P7 PR RAISED REFLECTIVE PM MARKER
- P8 PR LONG. JT. SEALANT

NOTES

- 1 RUMBLE STRIPS AND REFLECTORS BEGIN AT STA. 100+51.31 AND END AT STA. 140+50.61

MODEL: Default
FILE NAME: 103539_WashCo_CH 12CAD_Sheets\03539_TYPICALS.dgn

HMG
ENGINEERS

IL PROF DESIGN FIRM 184,000899

USER NAME	= bschneider	DESIGNED	-	REVISED	-
DRAWN	- BMS	REVISIONS	-	REVISIONS	-
PLOT SCALE	= 40,0000 ' / in.	CHECKED	-	REVISIONS	-
PLOT DATE	= 6/20/2024	DATE	-	REVISIONS	-

**COUNTY HIGHWAY 12 RESURFACING
WASHINGTON COUNTY, ILLINOIS**

PROPOSED TYPICAL SECTIONS

SCALE: NTS SHEET 2 OF 2 SHEETS STA. 100+51.31 TO STA. 206+40.77

CH RTE.	SECTION	COUNTY	TOTAL SHEETS	SHEET NO.
12	20-00097-00-RS	WASHINGTON	10	6
CONTRACT NO. 97857				
ILLINOIS FED. AID PROJECT				

MODEL: Default
FILE NAME: T108539_WashCo_CH 12CAD_Sheets18539_PLAN01.dgn



IL PROF DESIGN FIRM 184,000899

USER NAME	= bschneider
PLOT SCALE	= 100.0000 ' / in.
PLOT DATE	= 6/19/2024

DESIGNED -	
DRAWN -	BMS
CHECKED -	
DATE -	

REVISED -	
REVISED -	
REVISED -	
REVISED -	

COUNTY HIGHWAY 12 RESURFACING
WASHINGTON COUNTY, ILLINOIS

PLAN

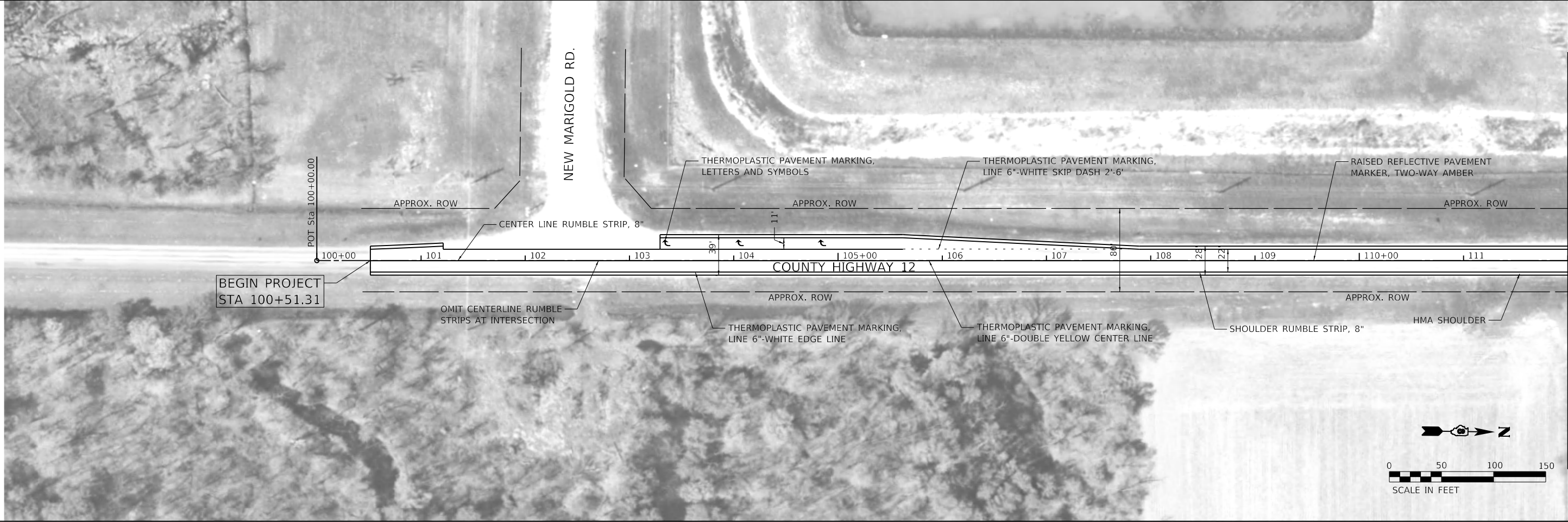
SCALE: 1"=50' SHEET 1 OF 4 SHEETS STA. 100+00.00 TO STA. 127+00.00

CH RTE.	SECTION	COUNTY	TOTAL SHEETS	SHEET NO.
12	20-00097-00-RS	WASHINGTON	10	7
		CONTRACT NO. 97857		
		ILLINOIS	FED. AID PROJECT	



MATCHLINE STA. 112+00.00

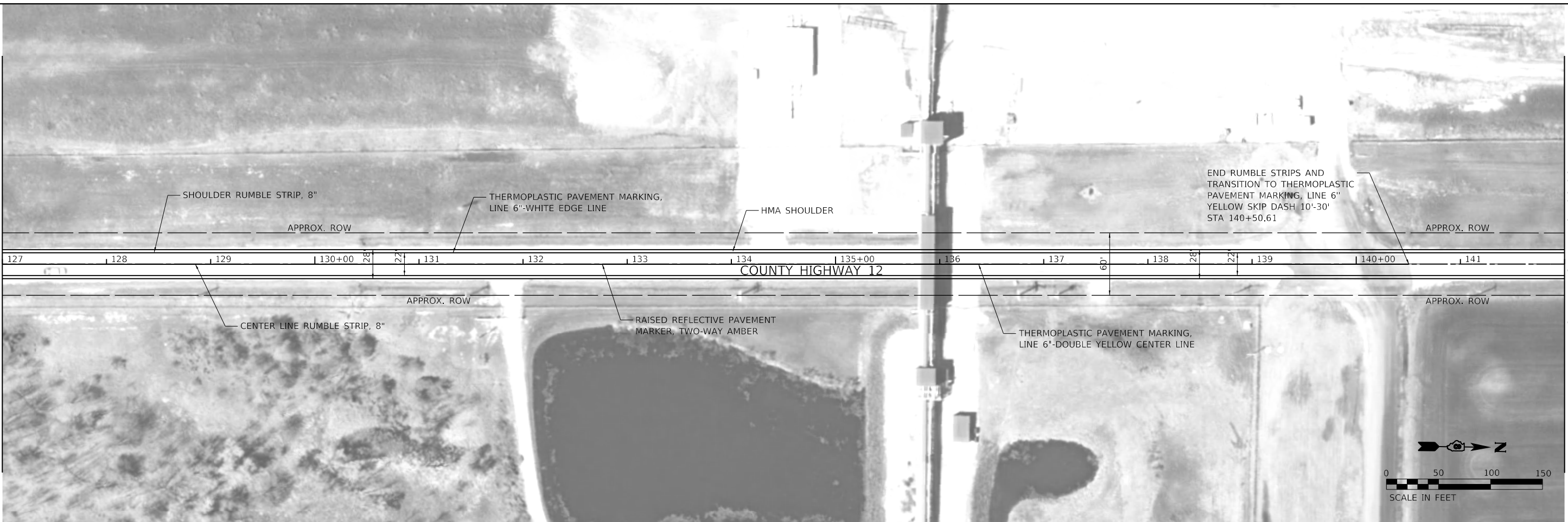
MATCHLINE STA. 127+00.00



MATCHLINE STA. 112+00.00

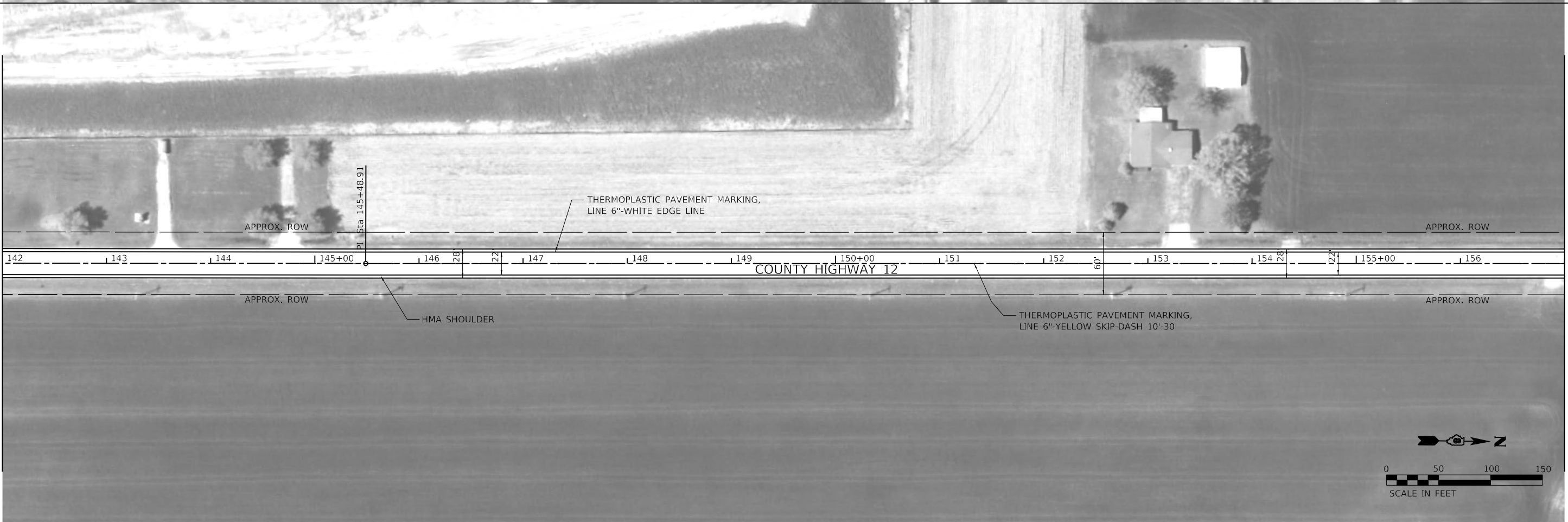
MODEL: Default
FILE NAME: T080539_WashCo_CH 12CAD_Sheets\8539_PLAN02.dgn

MATCHLINE STA. 127+00.00



MATCHLINE STA. 142+00.00

MATCHLINE STA. 142+00.00



MATCHLINE STA. 157+00.00



USER NAME	= bschneider	DESIGNED	-	REVISED	-
		DRAWN	-	REVISED	-
		CHECKED	-	REVISED	-
		DATE	-	REVISED	-

COUNTY HIGHWAY 12 RESURFACING
WASHINGTON COUNTY, ILLINOIS

PLAN			
SCALE: 1"=50'	SHEET 2	OF 4	SHEETS
STA. 127+00.00		TO STA. 157+00.00	

CH RTE.	SECTION	COUNTY	TOTAL SHEETS	SHEET NO.
12	20-00097-00-RS	WASHINGTON	10	8
		CONTRACT NO. 97857		
		ILLINOIS	FED. AID PROJECT	

Model: Default
File Name: T18539_WashCo_CH 12CAD_Sheets18539_PLAN03.dgn



IL PROF DESIGN FIRM 184,000899

USER NAME	= bschneider
PLOT SCALE	= 100.0000 ' / in.
PLOT DATE	= 6/19/2024

DESIGNED	-
DRAWN	- BMS
CHECKED	-
DATE	-

REVISED	-
REVISED	-
REVISED	-
REVISED	-

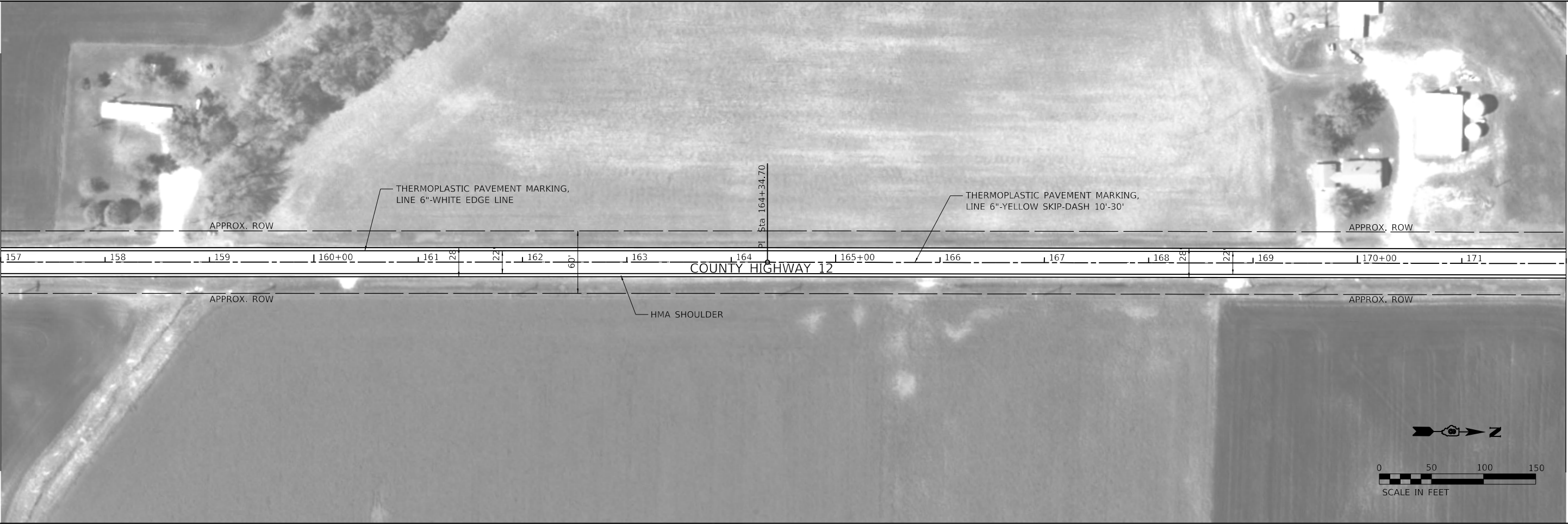
COUNTY HIGHWAY 12 RESURFACING
WASHINGTON COUNTY, ILLINOIS

PLAN

SCALE: 1"=50'	SHEET 3	OF 4	SHEETS	STA. 157+00.00	TO STA. 187+00.00
---------------	---------	------	--------	----------------	-------------------

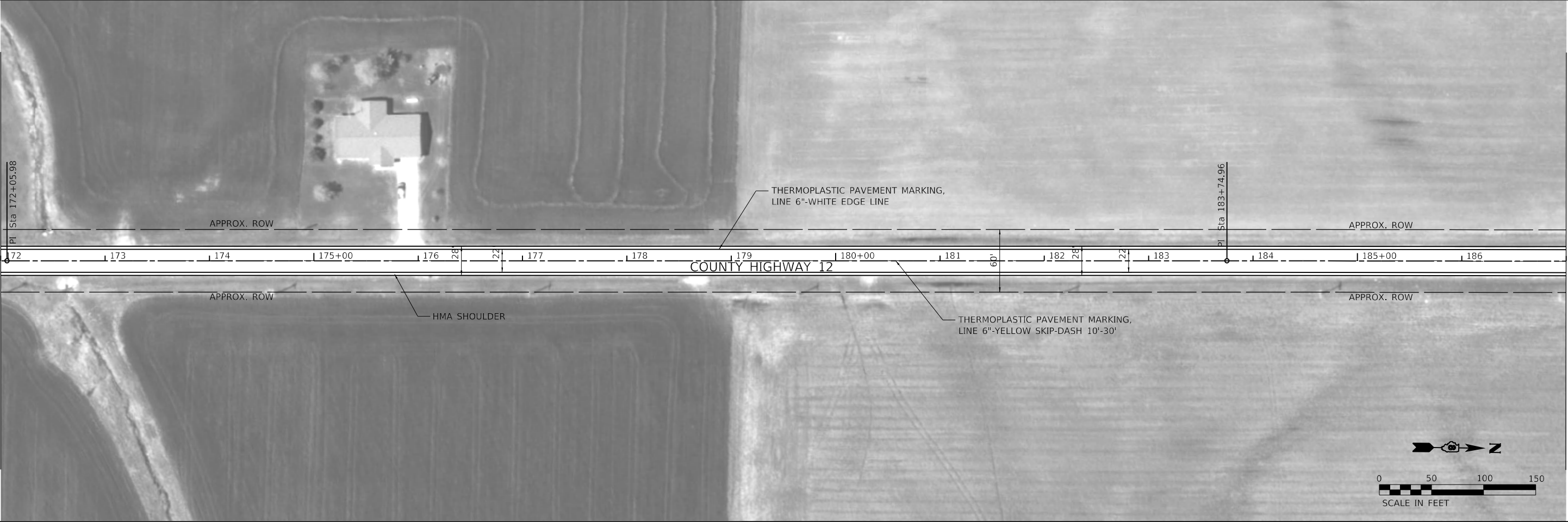
CH RTE.	SECTION	COUNTY	TOTAL SHEETS	SHEET NO.
12	20-00097-00-RS	WASHINGTON	10	9
CONTRACT NO. 97857				
		ILLINOIS	FED. AID PROJECT	

MATCHLINE STA. 157+00.00



MATCHLINE STA. 172+00.00

MATCHLINE STA. 172+00.00



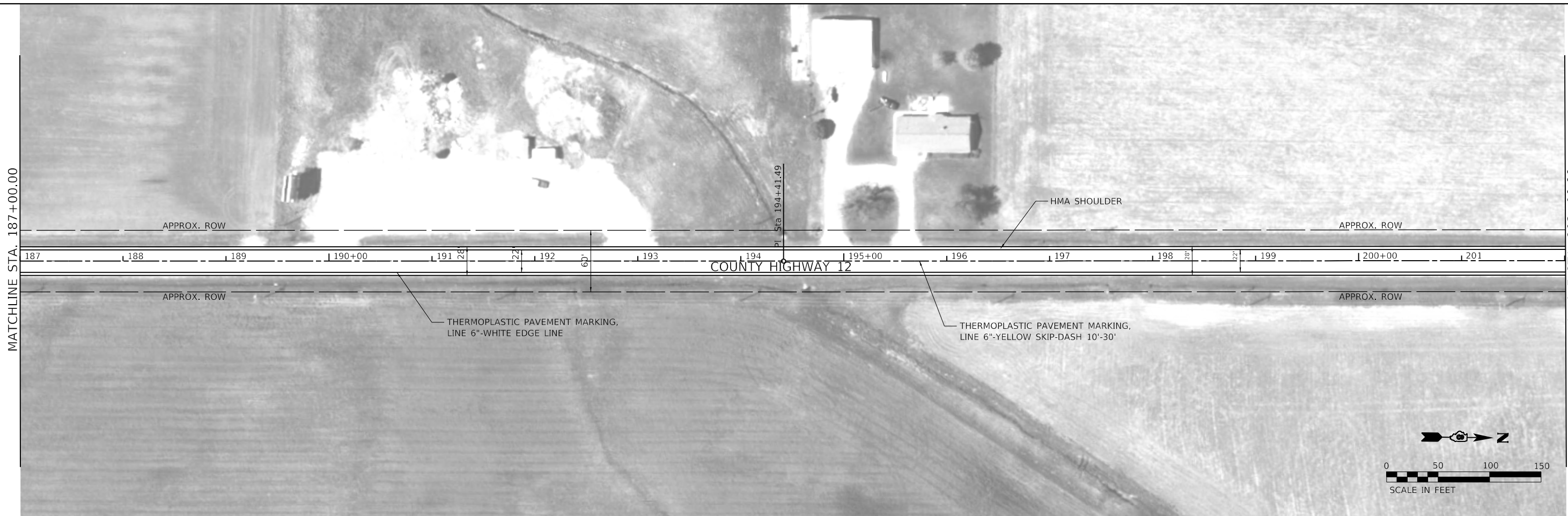
MATCHLINE STA. 187+00.00

MODEL: Default
FILE NAME: T18539_WashCo_CH 12CAD_Sheets18539_PLAN04.dgn

MATCHLINE STA. 187+00.00

MATCHLINE STA. 202+00.00

MATCHLINE STA. 202+00.00



USER NAME	= bschneider	DESIGNED	-	REVISED	-
		DRAWN	- BMS	REVISED	-
PLOT SCALE	= 100.0000' / in.	CHECKED	-	REVISED	-
PLOT DATE	= 6/19/2024	DATE	-	REVISED	-

COUNTY HIGHWAY 12 RESURFACING
WASHINGTON COUNTY, ILLINOIS

PLAN

SCALE: 1"=50' SHEET 4 OF 4 SHEETS STA. 187+00.00 TO STA. 205+51.80

CH RTE.	SECTION	COUNTY	TOTAL SHEETS	SHEET NO.
12	20-00097-00-RS	WASHINGTON	10	10
CONTRACT NO. 97857				
ILLINOIS FED. AID PROJECT				