

STATE OF ILLINOIS  
DEPARTMENT OF TRANSPORTATION

F.A.I. RTE.	SECTION	COUNTY	TOTAL SHEETS	SHEET NO.
55	60-1HB1-BP	MADISON	13	1
		ILLINOIS	CONTRACT NO. 76T07	

D-98-028-25



LOCATION OF SECTION INDICATED THUS: -

FUNCTIONAL CLASSIFICATION  
INTERSTATE

2024 ADT = 33200 (ACTUAL)  
2027 ADT = 33700 (ESTIMATED)  
2047 ADT = 38700 (ESTIMATED)  
S.U. = 2.4% M.U. = 20.8%

STATE OF ILLINOIS  
DEPARTMENT OF TRANSPORTATION

SUBMITTED Jan 27 2025 etc  
[Signature] REGIONAL ENGINEER  
March 21 2025  
[Signature] ENGINEER OF DESIGN AND ENVIRONMENT  
March 21 2025  
[Signature] 5  
DIRECTOR OF HIGHWAYS PROJECT IMPLEMENTATION

PRINTED BY THE AUTHORITY  
OF THE STATE OF ILLINOIS

FOR INDEX OF SHEETS, SEE SHEET NO. 2

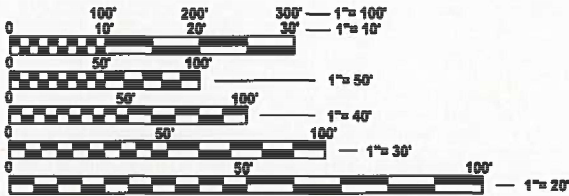
PROPOSED  
HIGHWAY PLANS

FAI ROUTE 55 (I-55)  
SECTION 60-1HB1-BP  
PROJECT NHPP-6LEC(470)  
BRIDGE PAINTING  
MADISON COUNTY

C-98-080-25

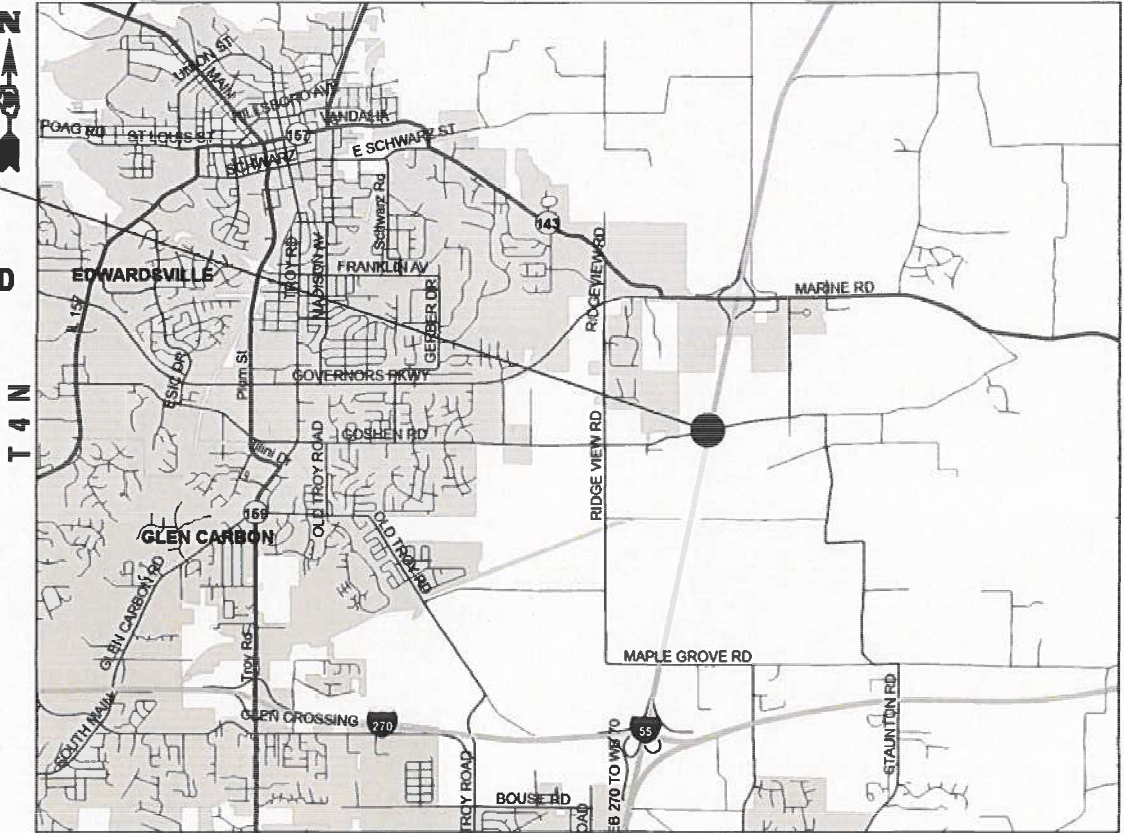
R 7 W

PROJECT LOCATION  
SN 060-0178  
FAI 55 NBSB  
BRIDGE UNDER GOSHEN RD  
LAT: 38.782540  
LONG: -89.898699



FULL SIZE PLANS HAVE BEEN PREPARED USING STANDARD  
ENGINEERING SCALES. REDUCED SIZED PLANS WILL NOT  
CONFORM TO STANDARD SCALES. IN MAKING MEASUREMENTS  
ON REDUCED PLANS, THE ABOVE SCALES MAY BE USED.

J.U.L.I.E.  
JOINT UTILITY LOCATION INFORMATION FOR EXCAVATION  
1-800-892-0123  
OR 811



PROJECT ENGINEER: CHERYL KEPLAR  
PROJECT MANAGER: BRANDON HUMPHREYS

CONTRACT NO. 76T07

GROSS LENGTH = 52.8 FT. = 0.01 MILE  
NET LENGTH = 52.8 FT. = 0.01 MILE

INDEX OF SHEETS

1	COVER SHEET
2	INDEX OF SHEETS, HIGHWAY STANDARDS, GENERAL NOTES, AND COMMITMENTS
3	SUMMARY OF QUANTITIES
4	TRAFFIC CONTROL AND PROTECTION, STANDARD 701401 (SPECIAL)
5-13	STRUCTURE DETAILS - SN 060-0178

HIGHWAY STANDARDS

000001-08	STANDARD SYMBOLS, ABBREVIATIONS AND PATTERNS
001006	DECIMAL OF AN INCH AND OF A FOOT
701101-05	OFF-ROAD OPERATIONS, MULTILANE, 15' TO 24" FROM PAVEMENT EDGE
701106-02	OFF-ROAD OPERATIONS, MULTILANE, MORE THAN 15' AWAY
701400-12	APPROACH TO LANE CLOSURE, FREEWAY/EXPRESSWAY
701401-13	LANE CLOSURE, FREEWAY/EXPRESSWAY
701428-01	TRAFFIC CONTROL, SETUP AND REMOVAL, FREEWAY/EXPRESSWAY
701901-10	TRAFFIC CONTROL DEVICES

GENERAL NOTES

1. UTILITIES KNOWN TO HAVE FACILITIES WITHIN THE PROJECT AREA:  

AT&T ILLINOIS  
CITY OF EDWARDSVILLE  
LEVEL 3 COMMUNICATIONS, LLC
2. NO SURVEY WAS PERFORMED FOR THIS PROJECT AND THE PLANS WERE CREATED USING MICROFILM AND FIELD MEASUREMENTS.
3. TWO CHANGEABLE MESSAGE SIGNS SHALL BE REQUIRED FOR THIS PROJECT. THEY SHALL BE PLACED TWO WEEKS PRIOR TO ANY LANE CLOSURE AND SHALL REMAIN UP FOR THE DURATION OF THE PROJECT. LOCATIONS SHALL BE AT THE DIRECTION OF THE RESIDENT ENGINEER.
4. THE RESIDENT ENGINEER SHALL VERIFY THE EXISTENCE OF HIGHWAY LIGHTING, INTELLIGENT TRANSPORTATION SYSTEMS (I.T.S.) UTILITIES, AND/OR ELECTRICAL CABLES ASSOCIATED WITH TRAFFIC SIGNALS WITHIN THE PROJECT LIMITS. IF ANY OF THESE EXIST WITHIN THE PROJECT LIMITS, AND IF THESE ITEMS REQUIRE LOCATING, THE CONTRACTOR SHALL BE DIRECTED TO DO SO ACCORDING TO SECTION 803 OF THE STANDARD SPECIFICATIONS. THIS WORK SHALL BE PAID FOR ACCORDING TO ARTICLE 109.04 OF THE STANDARD SPECIFICATIONS.
5. THE SSPC-QP1 AND SSPC-QP2 CERTIFICATIONS WILL BE REQUIRED FOR THIS PROJECT.
6. A MINIMUM OF TWO AIR MONITORS WILL BE REQUIRED TO MONITOR ABRASIVE BLASTING OPERATIONS. SEE SPECIAL PROVISION FOR “CONTAINMENT AND DISPOSAL OF LEAD PAINT CLEANING RESIDUES.”
7. CLEANING AND PAINTING OF THE EXISTING STRUCTURAL STEEL SHALL BE AS SPECIFIED IN THE SPECIAL PROVISION FOR “CLEANING AND PAINTING EXISTING STEEL STRUCTURES.” ALL EXISTING STEEL SHALL BE CLEANED PER NEAR WHITE BLAST CLEANING SSPC- SP10. ALL EXISTING STEEL SHALL BE PAINTED ACCORDING TO THE REQUIREMENTS OF PAINT SYSTEM 1-OZ/E/U. THE COLOR OF THE FINAL FINISH COAT FOR ALL SURFACES SHALL BE GRAY, MUNSELL NO 5B 7/1.
8. THE DEPARTMENT STRONGLY ENCOURAGES THE PRIME CONTRACTOR AND THEIR APPROVED SUB-CONTRACTORS TO HIRE MINORITY, WOMEN AND DISADVANTAGED INDIVIDUALS FROM ITS FEDERALLY FUNDED HIGHWAY CONSTRUCTION CAREERS TRAINING PROGRAM (HCCTP) TO HELP MEET WORKFORCE AND TRAINEE GOALS. THIS PROGRAM IS TRAINING MINORITIES, WOMEN AND DISADVANTAGED INDIVIDUALS IN HIGHWAY CONSTRUCTION-RELATED SKILLS, E.G., MATH FOR THE TRADES, JOB READINESS, TECHNICAL SKILLS COURSEWORK (CARPENTRY, CONCRETE FLATWORK, BLUEPRINT READING, SITE PLANS, SITE WORK, TOOLS USE, ETC.) AND OSHA 10 HOUR CERTIFICATION, TO PREPARE THEM FOR A CAREER IN THE HIGHWAY CONSTRUCTION TRADES. GRADUATES ARE WELL-TRAINED AND READY TO BECOME PRODUCTIVE ENTRY-LEVEL CONSTRUCTION WORKERS. CONTACT THE DISTRICT 8 EEO OFFICE AT 618-346-3360 AND/OR THE HCCTP COORDINATOR AT 618-874-6528 TO LEARN MORE ABOUT THE PROGRAM AND FOR ASSISTANCE IN MEETING WORKFORCE AND TRAINEE GOALS.
9. ALL TURF AREAS DISTURBED BY THE CONTRACTOR SHALL BE SEEDED WITH THE APPROPRIATE EROSION CONTROL, AS DIRECTED BY THE ENGINEER, AT THE CONTRACTOR’S EXPENSE.

COMMITMENTS

NONE

MODEL: Gen Notes (Sheet)  
FILE NAME: c:\paw\work\paw\illinois.gov\edison.zohforny\@illinois.gov\1020391\0876107-shl-gennotes.dgn

	USER NAME   = edison.zohfonyi	DESIGNED   -	REVISED   -	STATE OF ILLINOIS DEPARTMENT OF TRANSPORTATION	INDEX OF SHEETS, HIGHWAY STANDARDS, GENERAL NOTES, AND COMMITMENTS				F.A.I RTE.	SECTION	COUNTY	TOTAL SHEETS	SHEET NO.
		DRAWN    -	REVISED   -						55	60-1HB1-BP	MADISON	13	2
		CHECKED   -	REVISED   -		CONTRACT NO. 76T07								
	PLOT DATE   = 1/24/2025	DATE       -	REVISED   -		SCALE: NTS	SHEET 1	OF 1	SHEETS	STA.	TO STA.	ILLINOIS   FED. AID PROJECT		

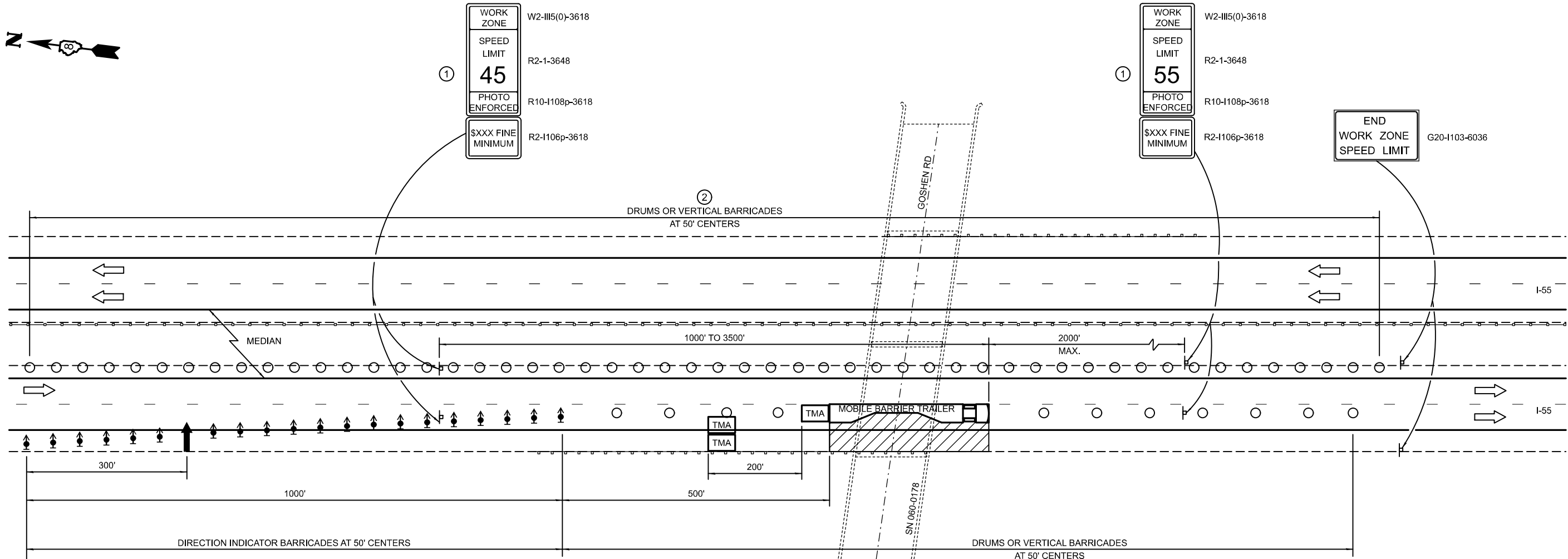


MODEL: SOQ [Sheet]  
FILE NAME: c:\pw\_work\pwidot\illinois.gov\_edison.zohfny@illinois.gov\1020391\1D876T07-sht-SOQ.dgn

[illegible]

FILE NAME:	USER NAME = edison.zohfonyi	DESIGNED -	REVISED -	STATE OF ILLINOIS DEPARTMENT OF TRANSPORTATION	SUMMARY OF QUANTITIES				F.A.I RTE.	SECTION	COUNTY	TOTAL SHEETS	SHEET NO.	
		DRAWN -	REVISED -						55	60-1HB1-BP	MADISON	13	3	
		CHECKED -	REVISED -						CONTRACT NO. 76T07					
	PLOT DATE = 1/3/2025	DATE -	REVISED -		SCALE:	SHEET 1	OF 1	SHEETS	STA.	TO STA.				
					ILLINOIS FED. AID PROJECT									

MODEL: Plan Sheet.dgn [Sheet]  
FILE NAME: c:\pwworking\illinois.gov\1020391\0876107-shield.dgn



SEE STANDARD 701400 FOR APPROACH  
START OF LANE CLOSURE TAPER  
START OF TRAFFIC CONTROL AND PROTECTION,  
STANDARD 701401 (SPECIAL)

### LEGEND

- ARROW BOARD
- WORK AREA
- TMA TRUCK/TRAILER MOUNTED ATTENUATOR
- SIGN
- DIRECTION INDICATOR BARRICADE WITH STEADY BURN MONODIRECTIONAL LIGHT
- DRUM OR VERTICAL BARRICADE
- MOBILE BARRIER TRAILER

- WORK ZONE SPEED LIMIT SIGNS SHALL BE MOVED AS NECESSARY TO MAINTAIN THE REQUIRED SPACING BETWEEN THE SIGNS AND THE WORKERS IN EACH SEPARATE WORK ACTIVITY. WORK ZONE SPEED LIMIT 55 PHOTO ENFORCED SIGN SHALL BE OMITTED WHEN THE WORK AREA DICTATES PLACEMENT OF THE SIGN ARRAY WITHIN 500' OF THE END WORK ZONE SPEED LIMIT SIGN.
- DRUMS OR BARRICADES SHALL BE PLACED WHERE CABLE MEDIAN BARRIER IS TEMPORARILY REMOVED, WHEN ADJACENT LANE HAS BEEN OPENED TO TRAFFIC. PLACEMENT OF DEVICES ARE SUBJECT TO DISCRETION OF RESIDENT ENGINEER.

### GENERAL NOTES

THIS DETAIL IS USED WHERE AT ANY TIME ANY VEHICLE, EQUIPMENT, WORKERS OR THEIR ACTIVITIES WILL ENCROACH ON THE LANE ADJACENT TO THE SHOULDER, OR ON THE SHOULDER WITHIN 2' OF THE EDGE OF PAVEMENT.

THIS DETAIL MUST BE USED IN COMBINATION WITH STANDARD 701400.

THIS DETAIL ALSO APPLIES WHEN WORK IS BEING PERFORMED IN THE LEFT LANE. UNDER THESE CONDITIONS, THE SETUP WOULD BE A MIRROR IMAGE TO WHAT IS SHOWN.

A CHECK BARRICADE SHALL BE PLACED IN THE MIDDLE OF THE CLOSED LANE AND AT THE SHOULDER AT 1000' CENTERS.

ALL DIMENSIONS ARE IN INCHES UNLESS OTHERWISE SHOWN.

## LANE CLOSURE, FREEWAY / EXPRESSWAY DETAIL

NOT TO SCALE

	USER NAME = edison.zohfonyi	DESIGNED -	REVISED -
		DRAWN -	REVISED -
		CHECKED -	REVISED -
	PLOT DATE = 1/24/2025	DATE -	REVISED -

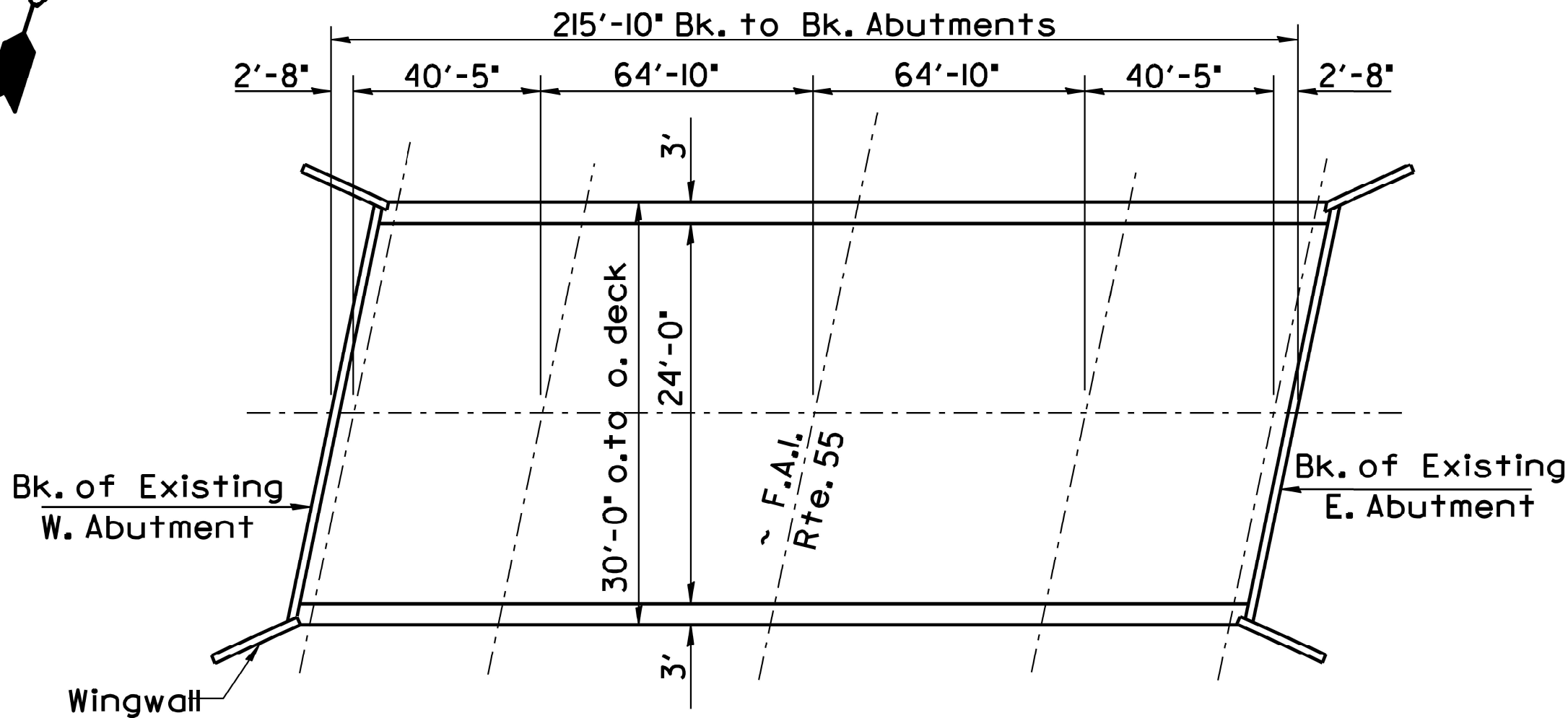
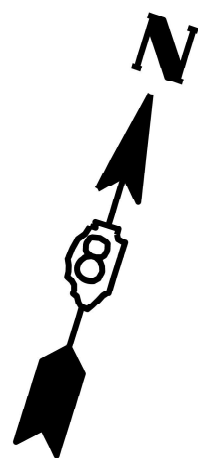
STATE OF ILLINOIS  
DEPARTMENT OF TRANSPORTATION

### TRAFFIC CONTROL AND PROTECTION, STANDARD 701401 (SPECIAL)

SCALE: NTS SHEET 1 OF 1 SHEETS STA. TO STA.

F.A.I RTE.	SECTION	COUNTY	TOTAL SHEETS	SHEET NO.
55	60-1HB1-BP	MADISON	13	4
CONTRACT NO. 76T07				
ILLINOIS FED. AID PROJECT				





EXISTING BRIDGE PLAN

FOR INFORMATION ONLY

MODEL: Plan Sheet-1 [Sheet]  
FILE NAME: c:\p\work\illinois.gov\edison.zohfanyi\10876107-shd-plan.dgn

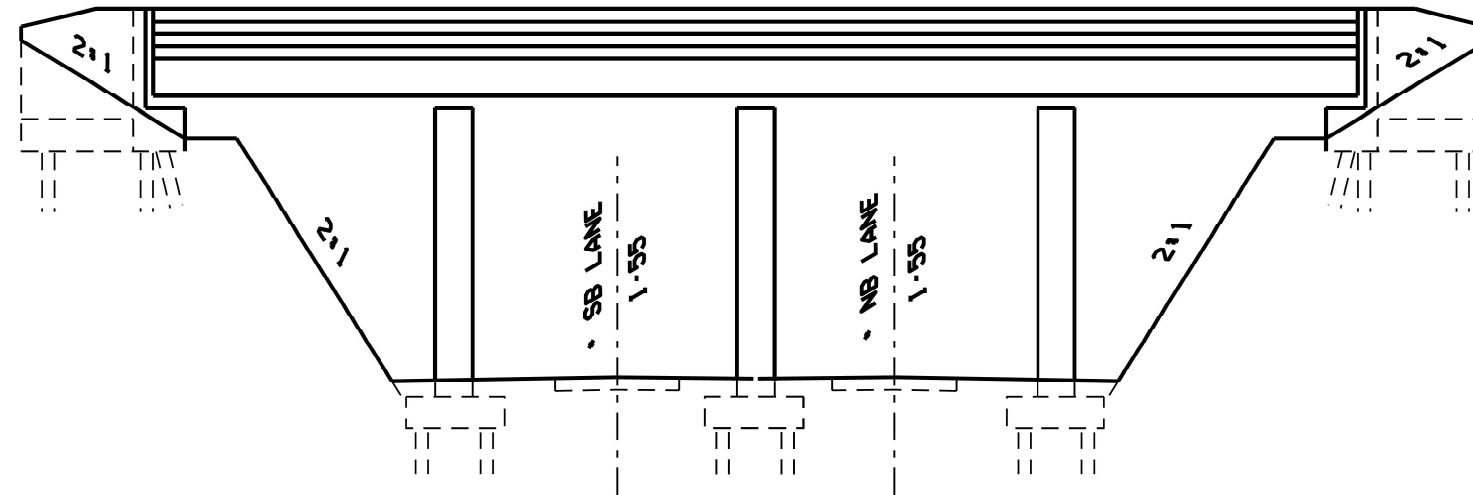
USER NAME = edison.zohfanyi	DESIGNED -	REVISED -
	DRAWN -	REVISED -
	CHECKED -	REVISED -
PLOT DATE = 1/24/2025	DATE -	REVISED -

STATE OF ILLINOIS  
DEPARTMENT OF TRANSPORTATION

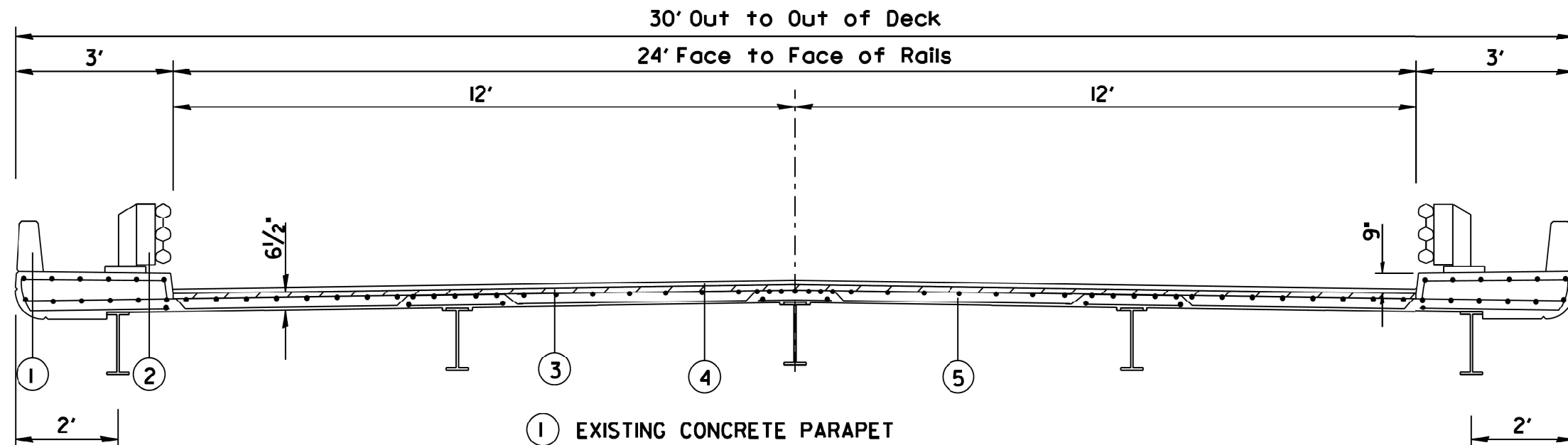
STRUCTURE DETAILS - SN 060-0178

SCALE: NTS SHEET 1 OF 9 SHEETS STA. TO STA.

F.A.I RTE.	SECTION	COUNTY	TOTAL SHEETS	SHEET NO.
55	60-1HB1-BP	MADISON	13	5
CONTRACT NO. 76T07				
ILLINOIS FED. AID PROJECT				



EXISTING ELEVATION



EXISTING CROSS SECTION

FOR INFORMATION ONLY

MODEL: Plan Sheet2 [Sheet]  
FILE NAME: c:\p\work\illinois.gov\1020391\0876107-shd-plan.dgn

USER NAME = edison.zohfanyi	DESIGNED -	REVISED -
	DRAWN -	REVISED -
	CHECKED -	REVISED -
PLOT DATE = 1/24/2025	DATE -	REVISED -

STATE OF ILLINOIS  
DEPARTMENT OF TRANSPORTATION

STRUCTURE DETAILS - SN 060-0178

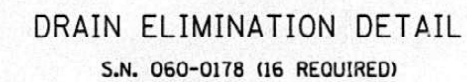
SCALE: NTS SHEET 2 OF 9 SHEETS STA. TO STA.

F.A.I RTE.	SECTION	COUNTY	TOTAL SHEETS	SHEET NO.
55	60-1HB1-BP	MADISON	13	6
CONTRACT NO. 76T07				
ILLINOIS FED. AID PROJECT				



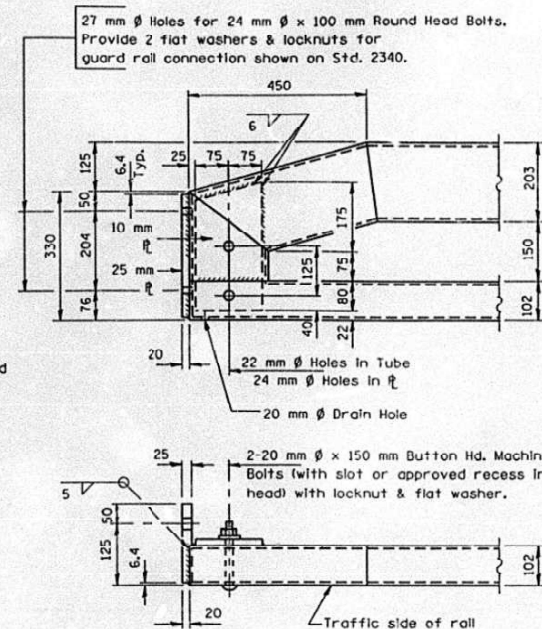
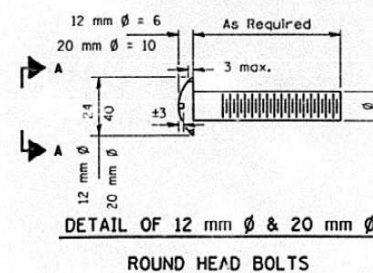
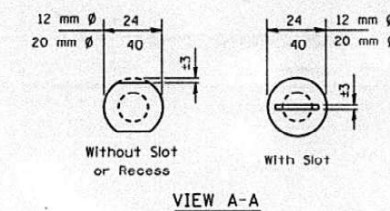
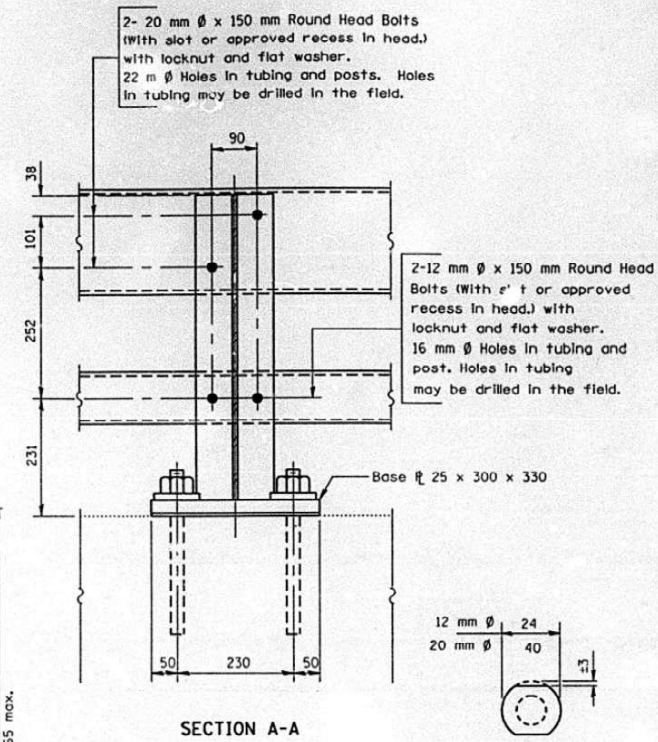
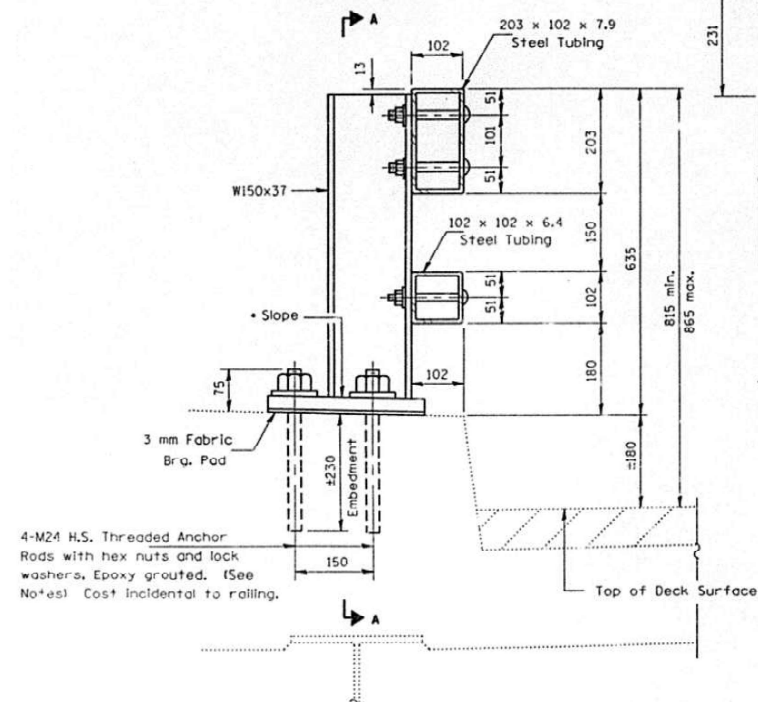
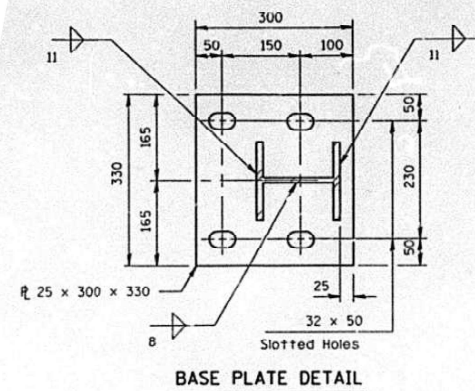


ALL STRUCTURAL STEEL SHALL BE SHOP PAINTED WITH THE INORGANIC ZINC RICH PRIMER.



FOR INFORMATION ONLY

F.A.I RTE.	SECTION	COUNTY	TOTAL SHEETS	SHEET NO.
55	60-1HB1-BP	MADISON	13	7
		CONTRACT NO. 76T07		
		ILLINOIS	FED. AID PROJECT	



## NOTES

Follow structural steel tubing shall conform to the requirements of ASTM designation A-500, Grade B, Structural Steel Tubing and shall meet the longitudinal CVN requirements of 20 N m at -18 °C.

All other steel shapes and plates shall conform to the requirements of AASHTO M-270 Grade 250 except posts shall conform to AASHTO M-270, Grade 345.

Bolts, cap screws and nuts shall conform to the requirements of ASTM designation A-307 except that threaded rods, nuts and washers shall conform to AASHTO M-164M.

All bolts, nuts, cap screws, washers and lock washers shall be galvanized in accordance with AASHTO M-252.

All posts, railing, roll splices and anchor rods shall be galvanized after shop fabrication in accordance with AASHTO M-111 and ASTM A-385. Galvanized roll shall not be painted.

Railing shall be in accordance with Section 509 of the Standard Specifications, except as noted, and will be paid for at the contract unit price per meter for STEEL BRIDGE RAIL.

All field drilled holes shall be coated with an approved zinc rich paint before erection.

Posts shall not be located closer than 400 mm to an existing bridge expansion joint or end of bridge.

STEEL BRIDGE RAIL expansion joint shall be provided between any two (2) posts which span a bridge expansion joint. Bolts located at expansion joint shall be provided with locknuts and shall be tightened only to a point that will allow railing movement.

Provide one 3 mm and two 1.6 mm steel shims for 25% of the posts. Shims shall be similar to base plates in size and holes.

Expansion joint width shall be "D" at 10 °C and shall be adjusted for other temperatures according to Article 503.10(c) of the Standard Specifications.

The Contractor shall use the capsule or the adhesive cartridge type and rods that have been previously tested and given a prior approval by the Department. The Contractor shall install these anchor rods in pre-drilled holes in accordance with the manufacturer's recommendations and procedure.

The capsule or the adhesive cartridge shall be a sealed glass capsule or a sealed glass adhesive cartridge containing premeasured amounts of the adhesive chemical.

Nuts for 24 mm  $\phi$  threaded anchor rods connecting the base plate to the concrete shall be tightened to a snug fit and given an additional  $\frac{1}{8}$  turn.

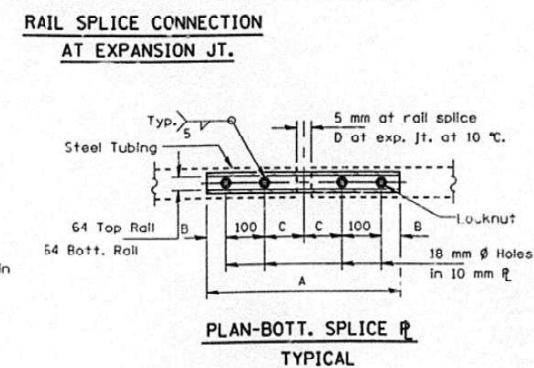
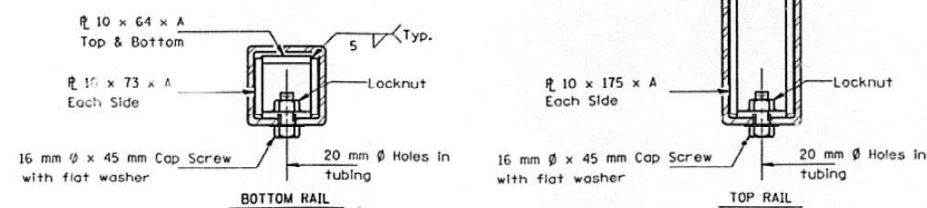
All dimensions are in millimeters (mm) except as noted.

For Post Spacing See Sheet 1 of 3.

Item	Unit	Quantity
Steel Bridge Roll	m	128

<b>T</b>	<b>D</b>	<b>A</b>	<b>B</b>	<b>C</b>	<b>E</b>
<b>≤100</b>	<b>65</b>	<b>500</b>	<b>50</b>	<b>100</b>	<b>65</b>
<b>&gt;100 ≤165</b>	<b>95</b>	<b>610</b>	<b>65</b>	<b>140</b>	<b>90</b>
<b>&gt;165 ≤230</b>	<b>125</b>	<b>710</b>	<b>90</b>	<b>165</b>	<b>230</b>
<b>&gt;230 ≤300</b>	<b>175</b>	<b>860</b>	<b>115</b>	<b>215</b>	<b>280</b>
<b>Roll Splice</b>	<b>5</b>	<b>500</b>	<b>50</b>	<b>100</b>	<b>—</b>

T = Total movement at expansion joint as shown on the design plans.



STEEL BRIDGE RAIL  
CURB MOUNTED  
(2399)  
SN 060-0178  
FAI ROUTE 55  
SECTION 60-(1,2)RS-1  
MADISON COUNTY

FOR INFORMATION ONLY

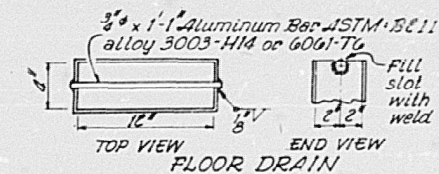
USER NAME = edison.zohfonyi	DESIGNED -	REVISED -	STATE OF ILLINOIS DEPARTMENT OF TRANSPORTATION	STRUCTURE DETAILS - SN 060-0178				F.A.I RTE.	SECTION	COUNTY	TOTAL SHEETS	SHEET NO.
	DRAWN -	REVISED -						55	60-1HB1-BP	MADISON	13	8
	CHECKED -	REVISED -						CONTRACT NO. 76T07				
PLOT DATE = 1/24/2025	DATE -	REVISED -		SCALE: NTS	SHEET 4	OF 9	SHEETS	STA.	TO STA.			



STATE OF ILLINOIS  
DEPARTMENT OF PUBLIC WORKS & BUILDINGS  
DIVISION OF HIGHWAYS

PLANT NO.	SECTION	LOCALITY	TOTAL SHEETS	OF SET NO.
55	601HB	MADISON	26	6

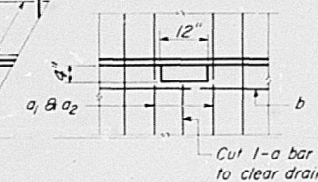
SHEET NO 2  
// SHEETS



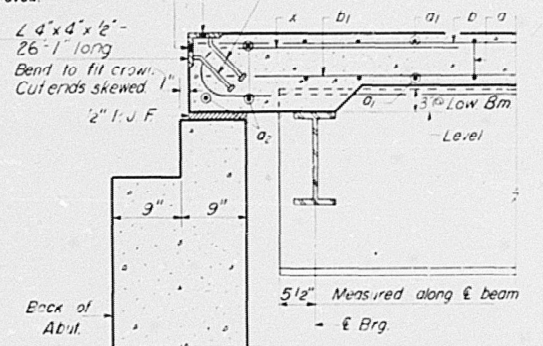
7/16" vent holes at 12" cts.  
set on 1 3/8" gage line

7/16" holes at 12" cts for 3/8" bolts  
set on 2 1/2" gage line All bolts  
shall be burned, sawed, or clipped  
off flush with back of angles after  
forms are removed.

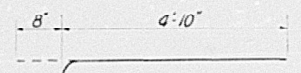
3/4" x 8" CR 1020 STL  
granular or solid flux filled  
headed studs, automatically  
end welded.  
(Alternate at 1'-0" sts.)



TYP. DETAIL AT DRAIN

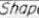
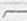
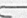


SECTION A-A

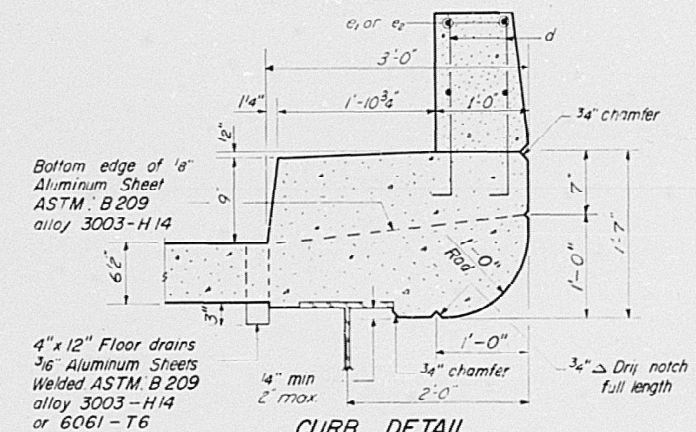


BAR x

### BILL OF MATERIAL

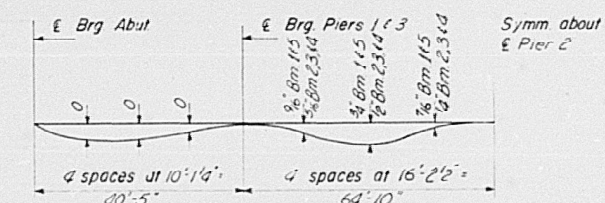
Bar	No	Size	Length	Shape
1	171	#5	30'-8"	
2	388	#5	29'-3"	—
3	6	#5	26'-0"	—
4				—
5	210	#5	22'-3"	—
6	462	#4	20'-0"	—
7	80	#6	18'-0"	—
8	40	#6	20'-3"	—
9	48	#4	17'-3"	—
10	72	#4	8'-9"	—
11	72	#4	16'-3"	—
12				—
13				—
14	426	#4	5'-9"	
15				—
16	98	#6	5'-6"	
17				—
Reinforcement Bars			Lbs	36,100
Structural Steel			Lbs	135,930
Class X Concrete			Cu. Yd	1948

\* Weight of bearing assemblies with lead plates, and anchor bolts are included as structural steel.  
Est Wt = 5800 Lbs.



*CURB DETAIL*

Cost of Aluminum Drains and Sheets shall be incidental to Class X Concrete.

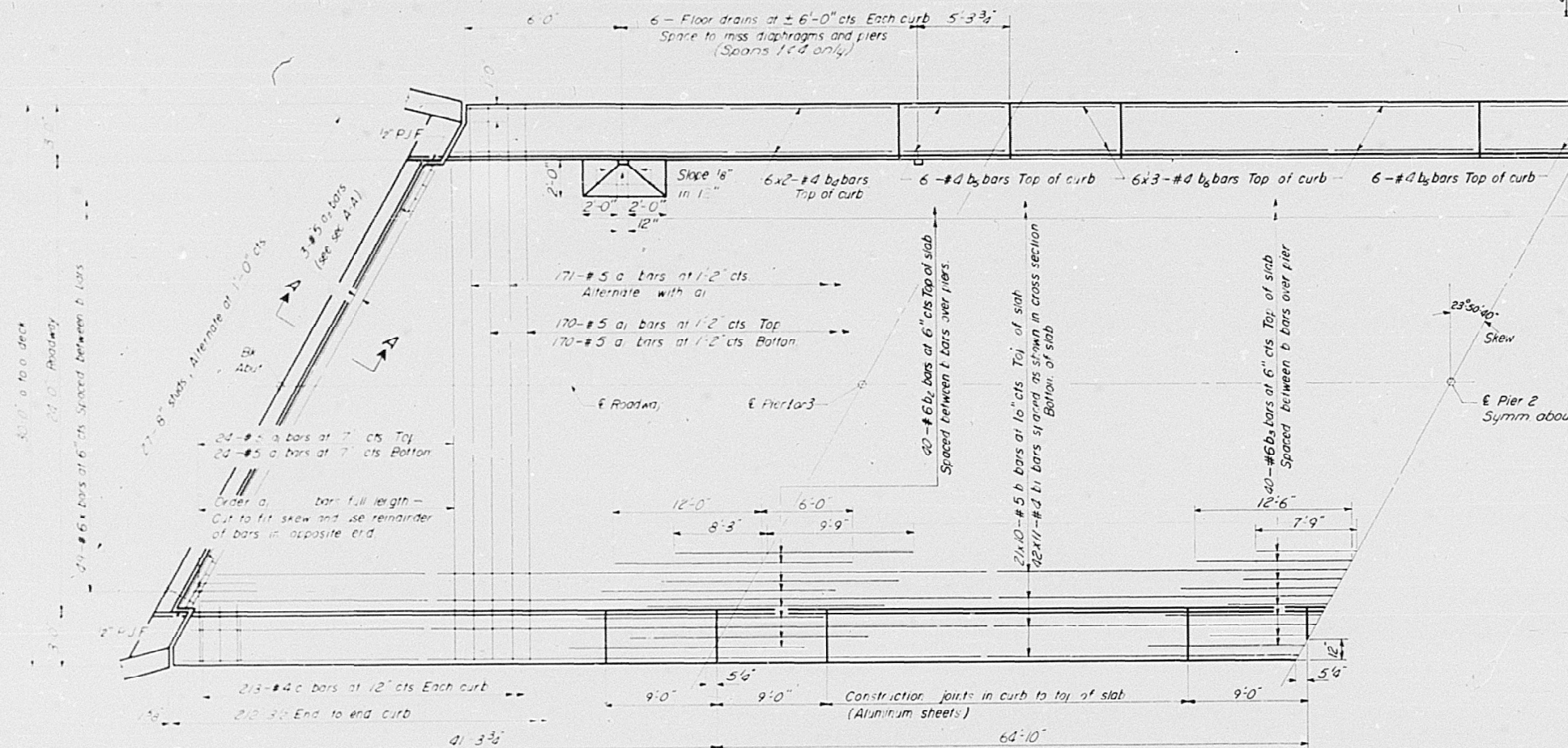


DEAD LOAD DEFLECTION DIAGRAM

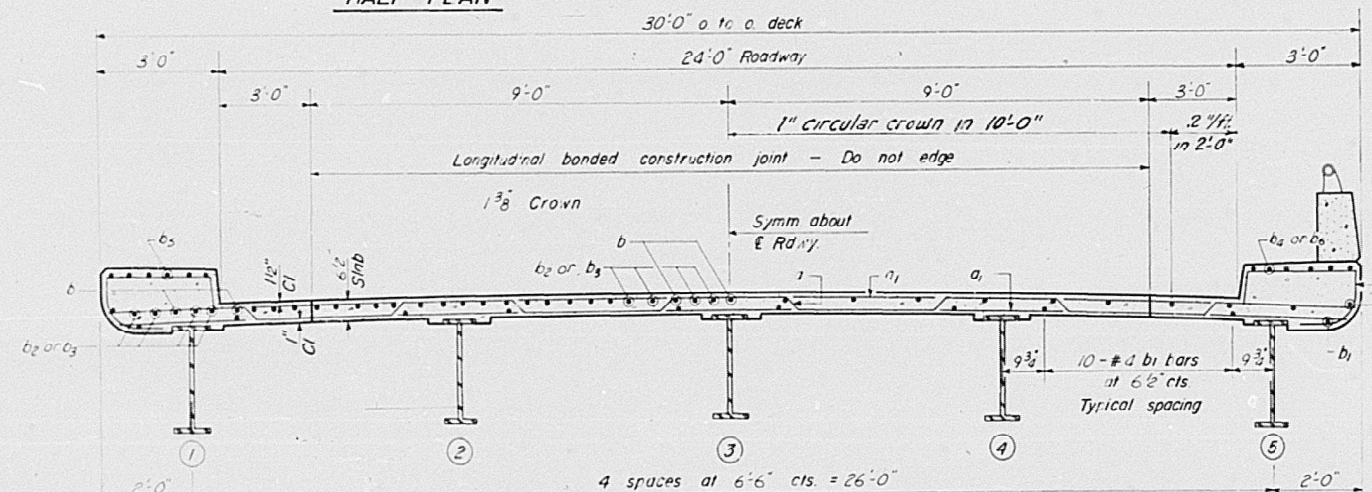
(Includes weight of concrete only)

Note: The above deflections are not to be used in the field if the engineer is working from the grade elevations adjusted for dead load deflections as shown on sheet "3"

SUPERSTRUCTURE  
F.A.I. RT. 55 - SEC. 60-1HB-1  
MADISON COUNTY  
STA. 1166 + 69.80



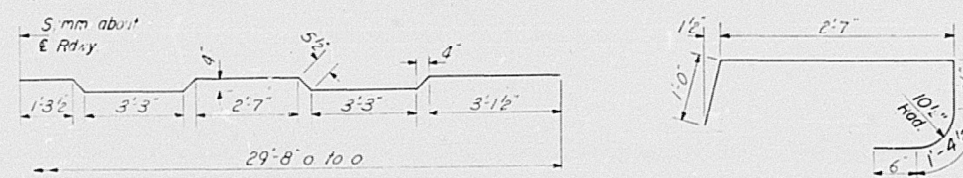
HALF PLAN



NEAR PIER

NEAR MIDSPAN

CROSS SECTION



BAR a

BAR c

### STANDARD FILLET DETAIL

To determine "t" After all structural steel has been erected, elevations of the top flanges of the beams shall be taken at intervals shown on sheet #3. These elevations subtracted from the "Grade Elevations Adjusted for Dead Load Deflections" shown on sheet #3, minus slab thickness, equals the fillet heights "t" above top of beams.

DESIGNED	R. Bradford Jr.
CHECKED	<i>L. Howell</i>
DRAWN	<i>28 L. Wanless</i> <i>D. L. Beemer</i>
CHECKED	<i>DK</i>

1. 1942 246 19 00

EXAMINED *[Signature]*  
ENGINEER OF BRIDGE AND TRAFFIC STRUCTURE

PASSED *[Signature]*  
ENGINEER OF DESIGN

APPROVED *[Signature]*

I-5-L ( $> 15^\circ$ ) 10-10-62

USER NAME = edison.zohfonyi	DESIGNED -	REVISED -
	DRAWN -	REVISED -
	CHECKED -	REVISED -
PLOT DATE = 1/24/2025	DATE -	REVISED -

**STATE OF ILLINOIS**  
**DEPARTMENT OF TRANSPORTATION**

**STRUCTURE DETAILS - SN 060-0178**

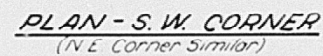
STRUCTURE DETAILS - SN 060-0178										F.A.I RTE.	SECTION		COUNTY	TOTAL SHEETS	SHEET NO.
										55	60-1HB1-BP		MADISON	13	9
										CONTRACT NO. 76T07					
SCALE:		SHEET 5		OF	9	SHEETS	STA.		TO STA.						

MODEL: Plan Sheet-5 [Sheet]  
FILE NAME: c:\pw work\pwidotillinois.gov edison.zohforvj@illinois.gov id1020391\ID876T07-sht-plan.dgn



ROUTE NO.	SECTION	COUNTY	TOTAL SHEETS	SHEET NO.
1-1-55	60-14B1	MADISON	26	8
FED. ROAD DIST. NO. 1		ILLINOIS	FED. AID PROJECT	

SHEET NO 8  
11 SHEETS



Cast End Cap

1 5/8"

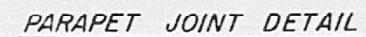
1 1/8"

1 5/8"

1 1/2"

9"

A-A

ELEVATION - END POST

Item	Unit	Quantity
Aluminum Handrail	Lin. Ft.	425
Reinforcement Bars	Lbs.	4230

### BAR LIST

Bar	No	Size	Length	Shape
a	956	#5	2'-6"	_____
e	16	#5	16'-6"	_____
e <sub>1</sub>	64	#5	15'-4"	_____
e <sub>2</sub>	48	#5	8'-9"	_____

ALUMINUM HANDRAIL  
F.A.I. RT. 55 - SEC. 60-148-1  
MADISON COUNTY  
STA. 1166 + 69.80

DESIGNED *R. Bradford Jr.*  
CHECKED *R. Howard*  
P.G.B. *L. Worless* *g8*  
DRAWN *W. A. Sausaman*  
CHECKED *RK*

MAR 24 1964

EXAMINED W.C. Baumann  
ENGINEER OF BRIDGE AND TRAFFIC STRUCTURES

PASSED E. Sherry  
ENGINEER OF DESIGN

APPROVED V.E. Haff  
ENGINEER

FOR INFORMATION ONLY

**STRUCTURE DETAILS - SN 060-0178**

**STATE OF ILLINOIS**  
**DEPARTMENT OF TRANSPORTATION**

SCALE:	SHEET 6	OF 9	SHEETS	STA.	TO STA.
--------	---------	------	--------	------	---------

F.A.I RTE.	SECTION	COUNTY	TOTAL SHEETS	SHEET NO.
55	60-1HB1-BP	MADISON	13	10
		CONTRACT NO. 76T07		
		ILLINOIS	FED. AID PROJECT	

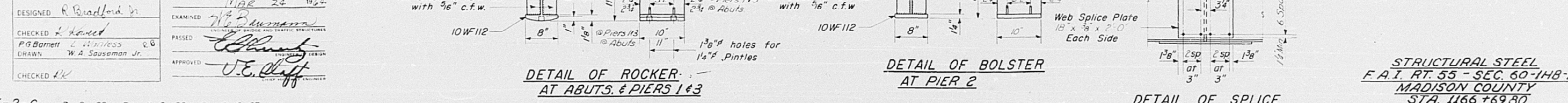
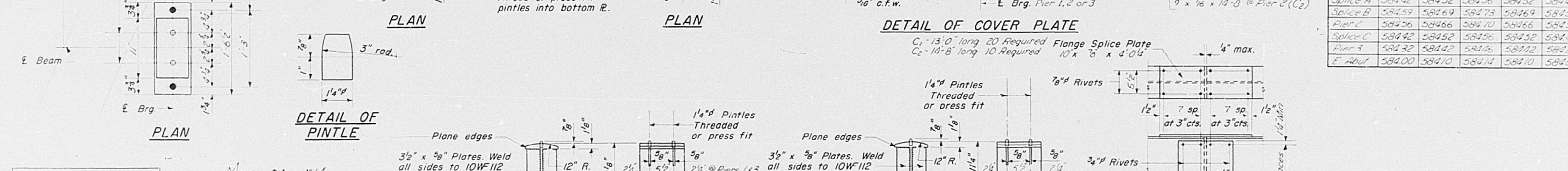
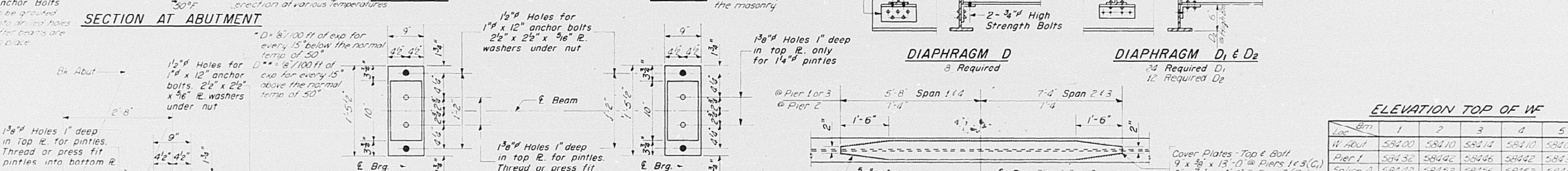
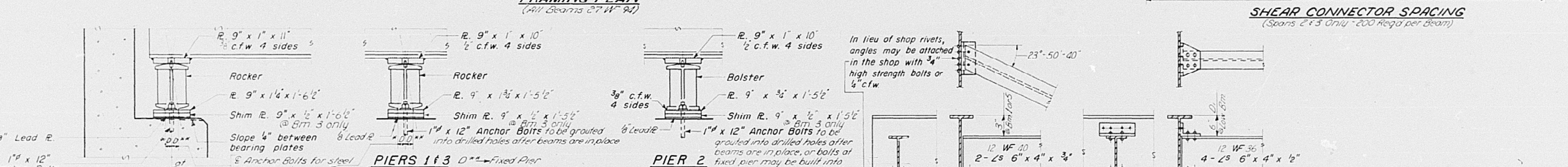
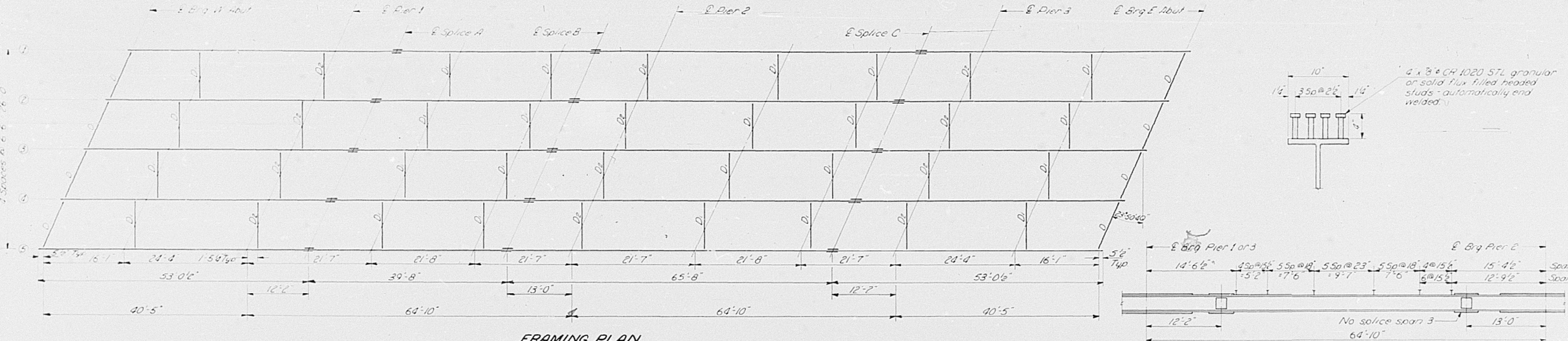
MODEL: Plan Sheet-6 [Sheet]  
FILE NAME: c:\pw\work\pwidott\illinois.gov\_edison.zohfory@illinois.gov\1020391\1D876T07-sht-plan.dgn



FOR INFORMATION ONLY

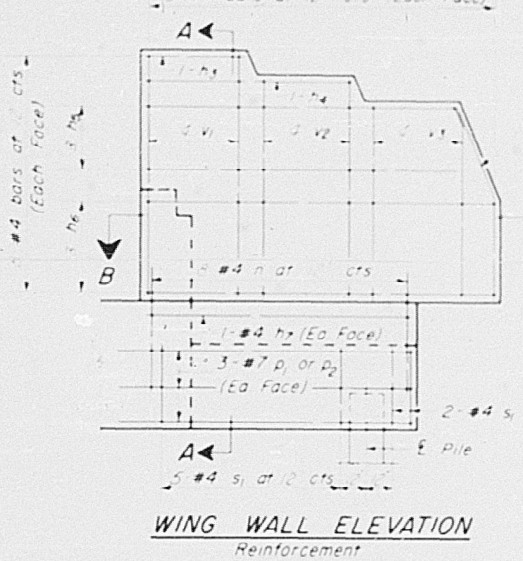
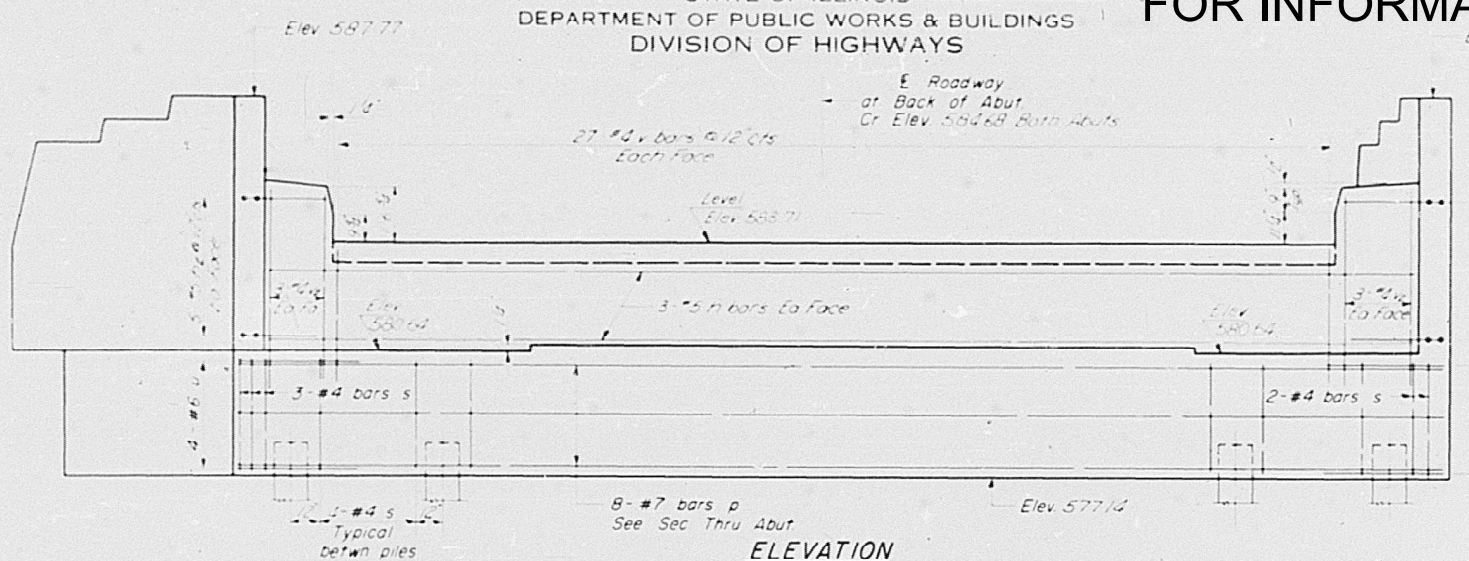
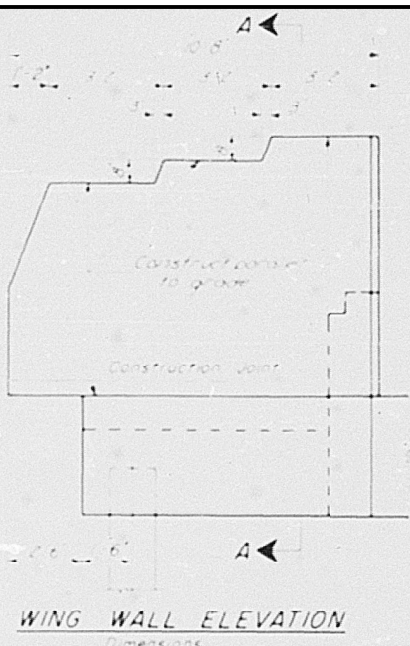
STATE OF ILLINOIS  
DEPARTMENT OF PUBLIC WORKS & BUILDINGS  
DIVISION OF HIGHWAYS

ROUTE NO.	SECTION	COUNTY	TOTAL SHEETS	SHEET NO.	SHEET NO.
55	60-1HB-1	MADISON	26	9	11 SHEETS
FED. ROAD DIST. NO. 1 ILLINOIS FED. AID PROJECT					



ELEVATION TOP OF WF					
Loc.	1	2	3	4	5
W. Abut.	584.00	584.10	584.14	584.10	584.00
Pier 1	584.32	584.42	584.46	584.42	584.32
Splice A	584.42	584.52	584.56	584.52	584.42
Splice B	584.59	584.69	584.73	584.69	584.59
Pier 2	584.56	584.66	584.70	584.66	584.56
Splice C	584.42	584.52	584.56	584.52	584.42
Pier 3	584.32	584.42	584.46	584.42	584.32
E. Abut.	584.00	584.10	584.14	584.10	584.00



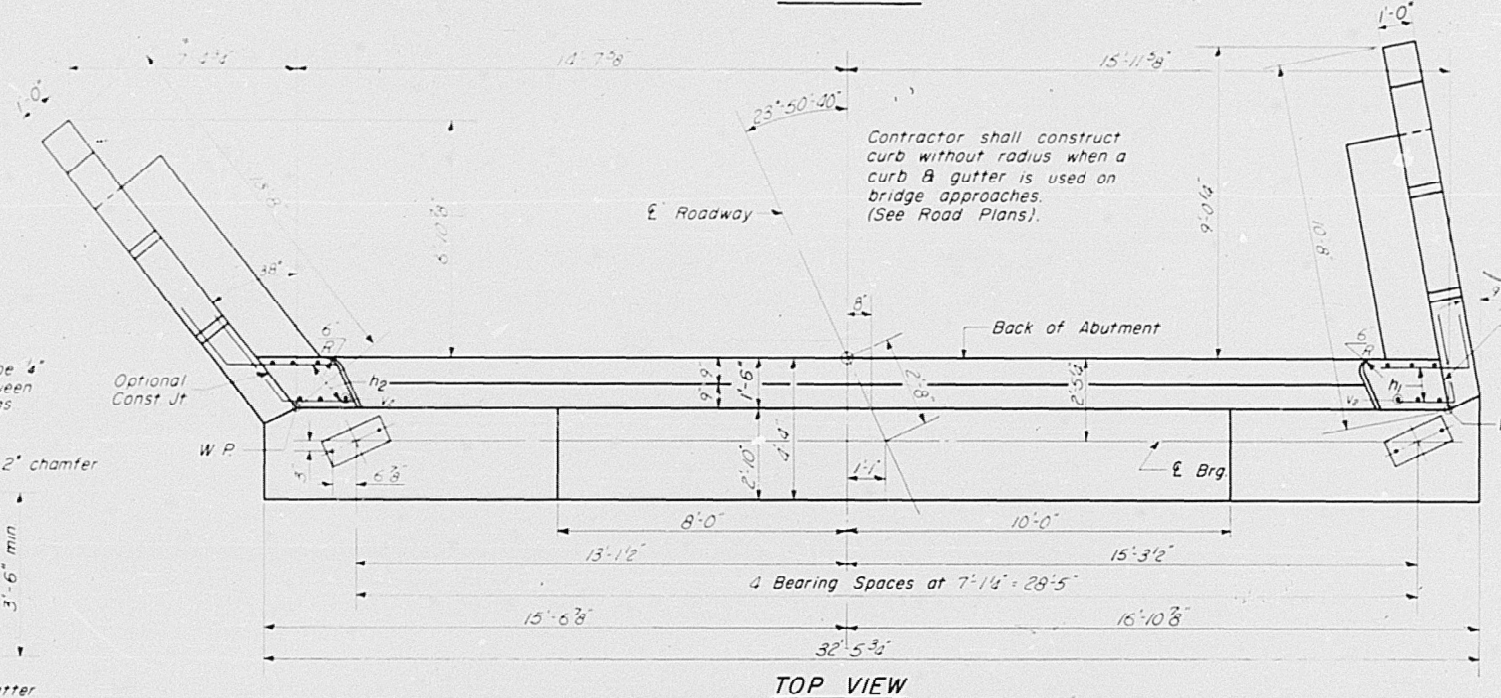
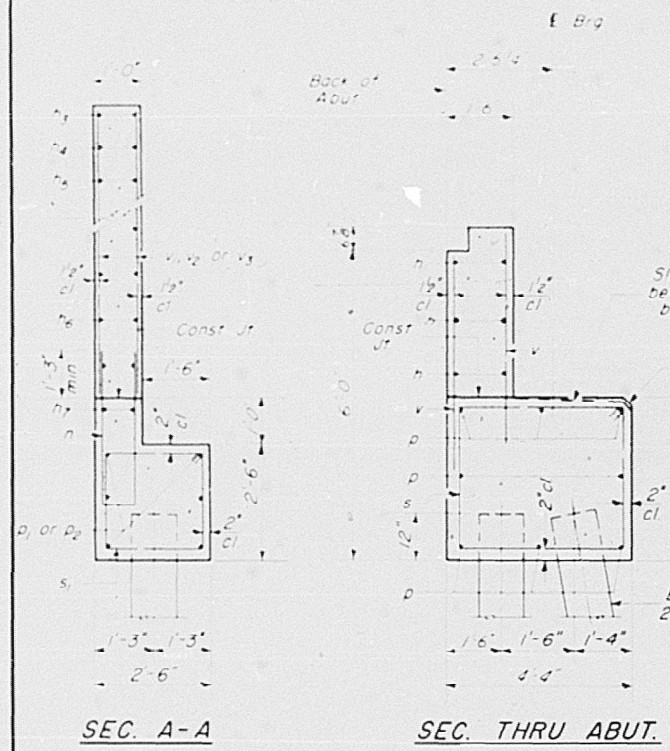


SEC. B-B

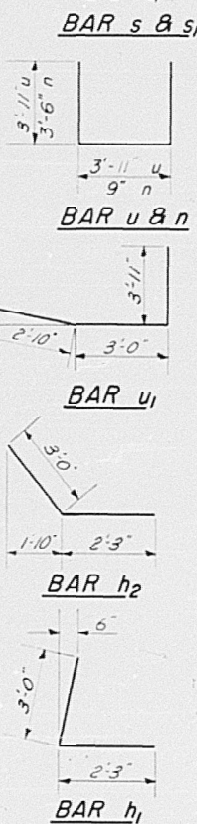
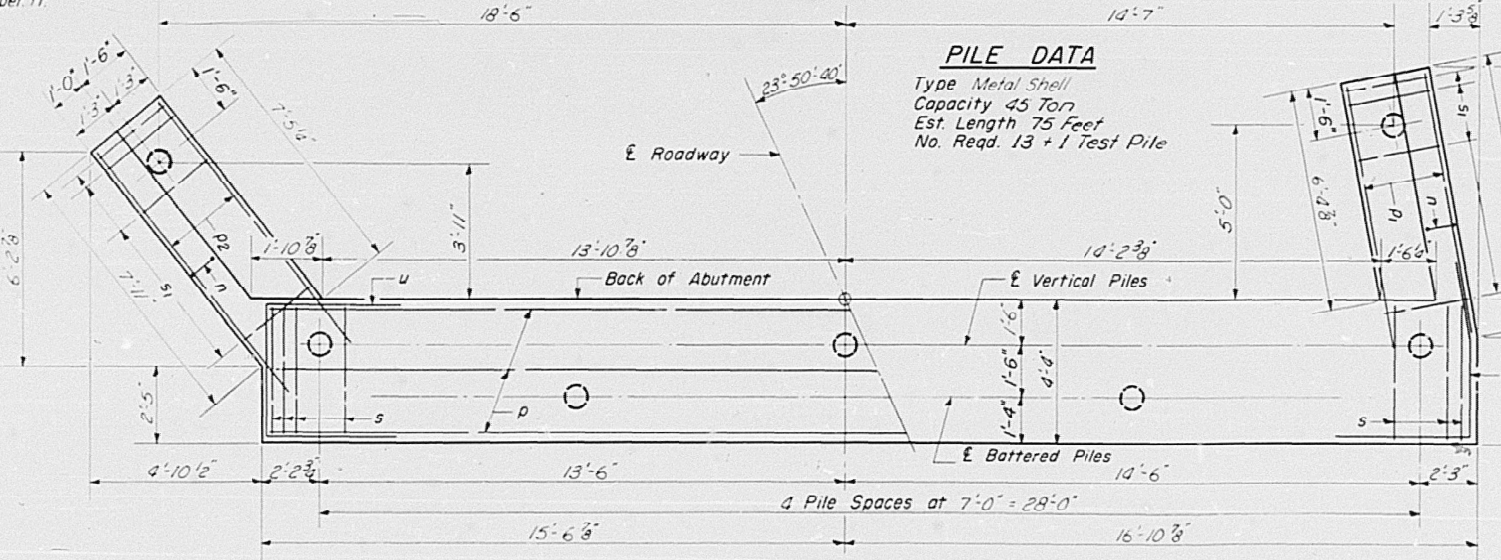
TWO ABUTMENTS  
BILL OF MATERIAL

Bar	No	Size	Length	Shape
n	12	#5	30'-3"	
n <sub>1</sub>	20	#5	5'-3"	L
n <sub>2</sub>	20	#5	5'-3"	
n <sub>3</sub>	8	#4	2'-0"	
n <sub>4</sub>	8	#4	6'-0"	
n <sub>5</sub>	24	#4	9'-3"	
n <sub>6</sub>	24	#4	10'-3"	
n <sub>7</sub>	8	#4	9'-0"	
n	32	#4	7'-4"	U
p	16	#7	31'-4"	
p <sub>1</sub>	12	#7	8'-0"	
p <sub>2</sub>	12	#7	9'-0"	
s	42	#4	15'-1"	□
s <sub>1</sub>	28	#4	9'-5"	□
u	8	#6	11'-4"	U
u <sub>1</sub>	8	#6	9'-9"	U
v	108	#4	3'-9"	
v <sub>1</sub>	32	#4	6'-9"	
v <sub>2</sub>	64	#4	6'-0"	
v <sub>3</sub>	32	#4	5'-6"	
Class X Concrete			Cu. Yds.	64.2
Reinforcement Bars			Lbs.	4350
Metal Shell Piles			Lin. Ft.	975
Test Piles			Ea.	1

ABUTMENTS  
F. A. I. RT. 55 - SEC. 60-1HB-1  
MADISON COUNTY  
STA. 1166 +69.80



PILE DATA  
Type Metal Shell  
Capacity 45 Ton  
Est. Length 75 Feet  
No. Reqd. 13 + 1 Test Pile



DESIGNED R. Bradford Jr.  
CHECKED L. W. W. Jr.  
DRAWN W. A. Sausaman Jr.  
CHECKED RK  
EXAMINED W. E. Bumann  
PASSED  
APPROVED U. E. O. Jr.

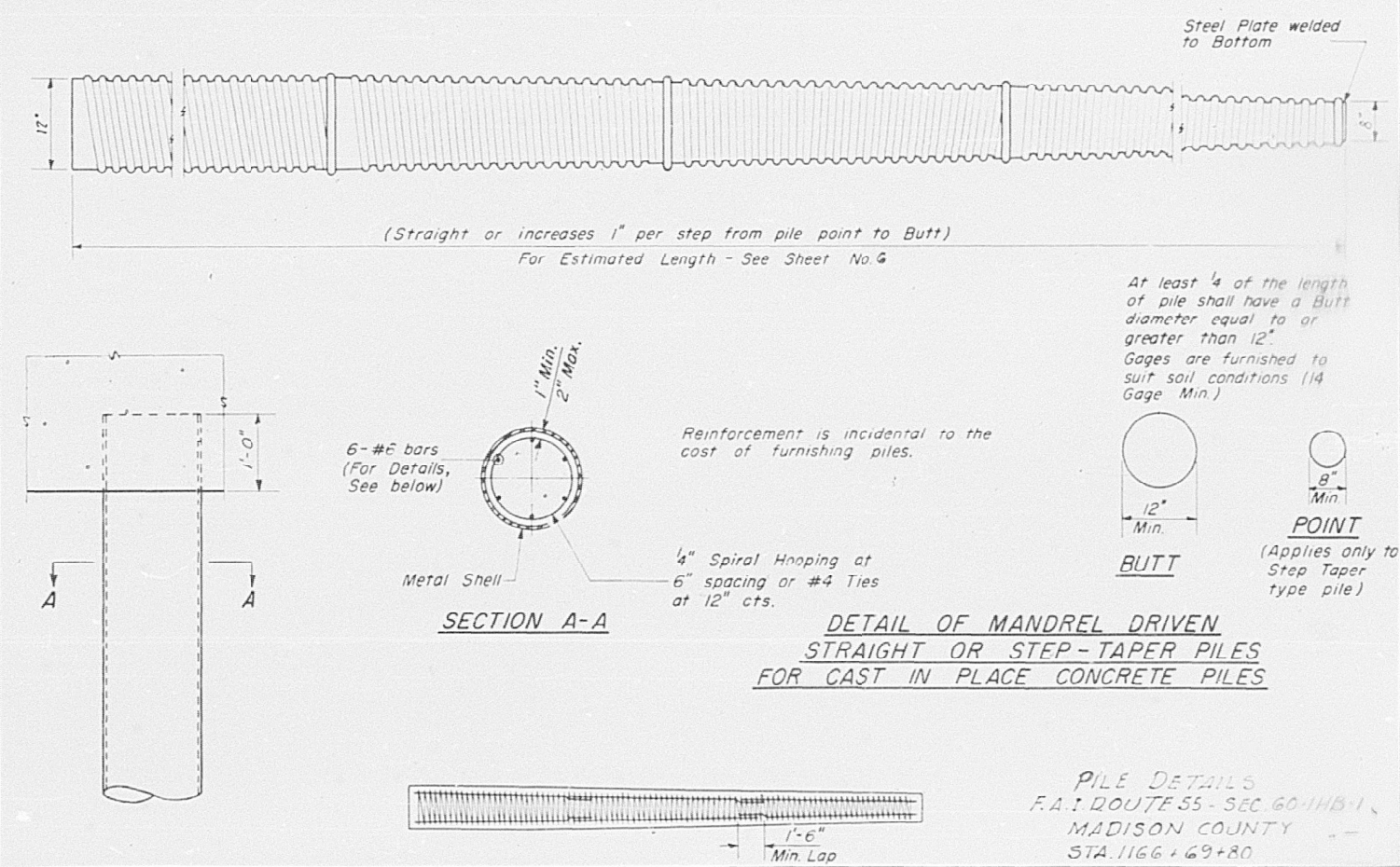
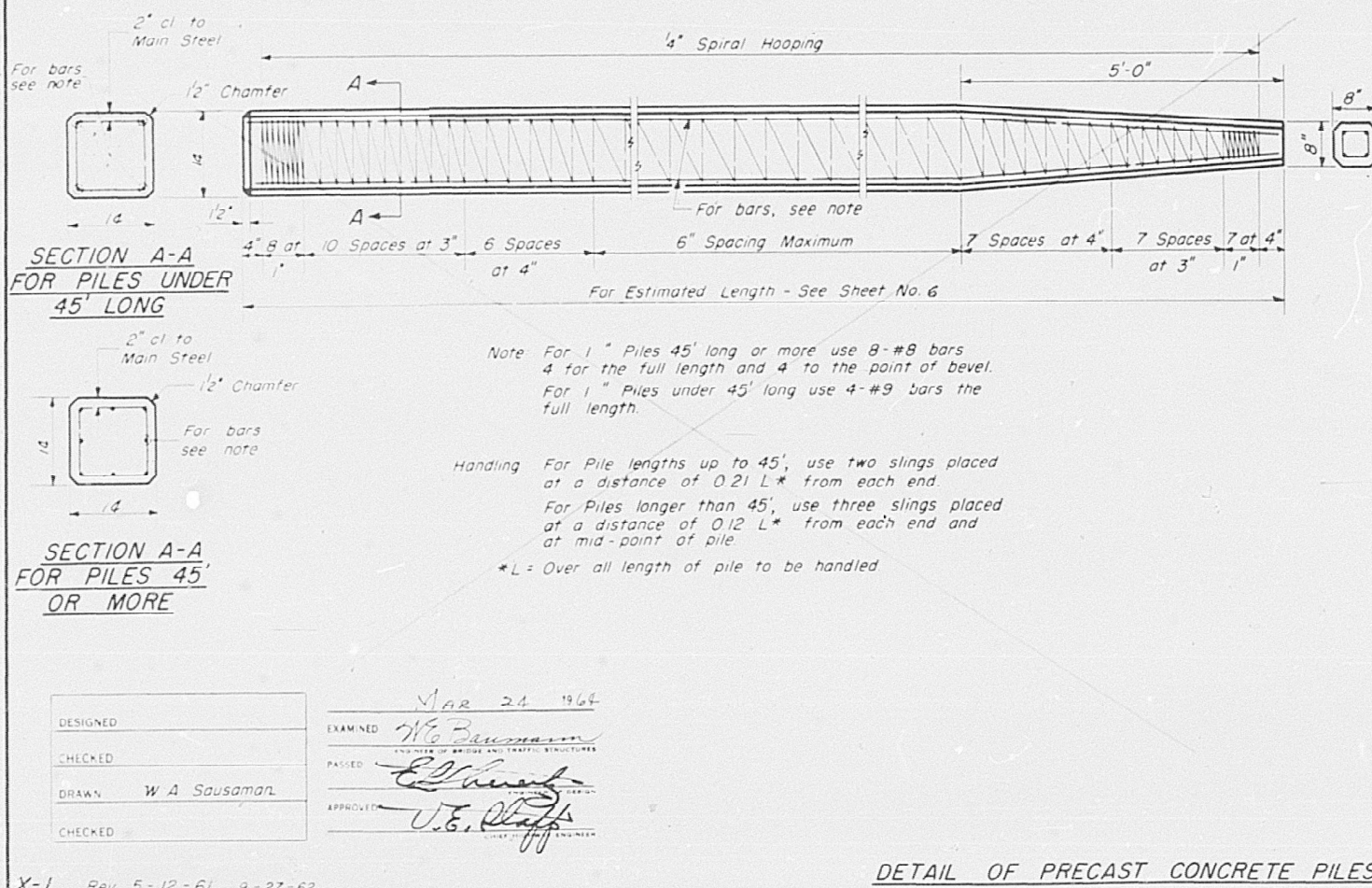
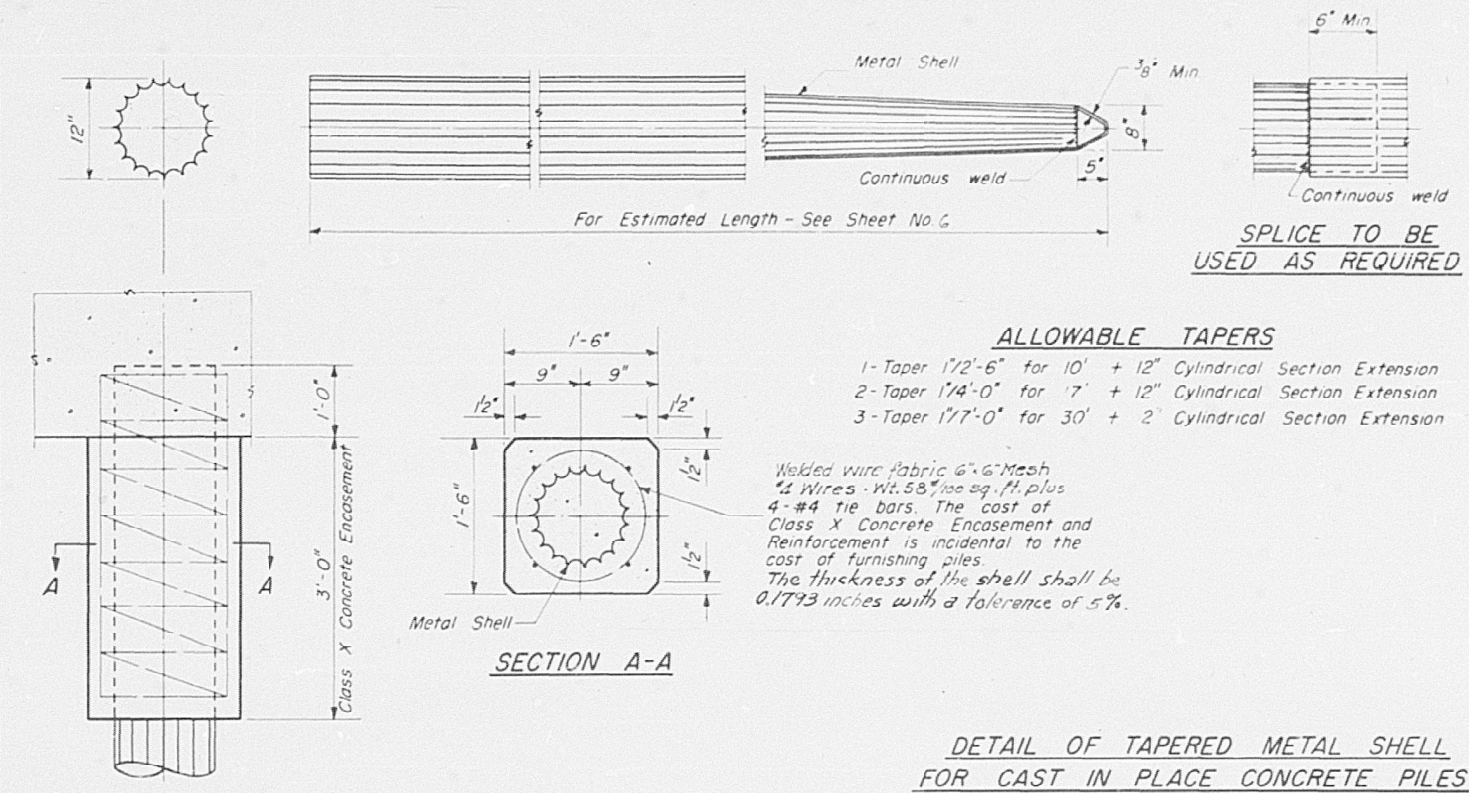
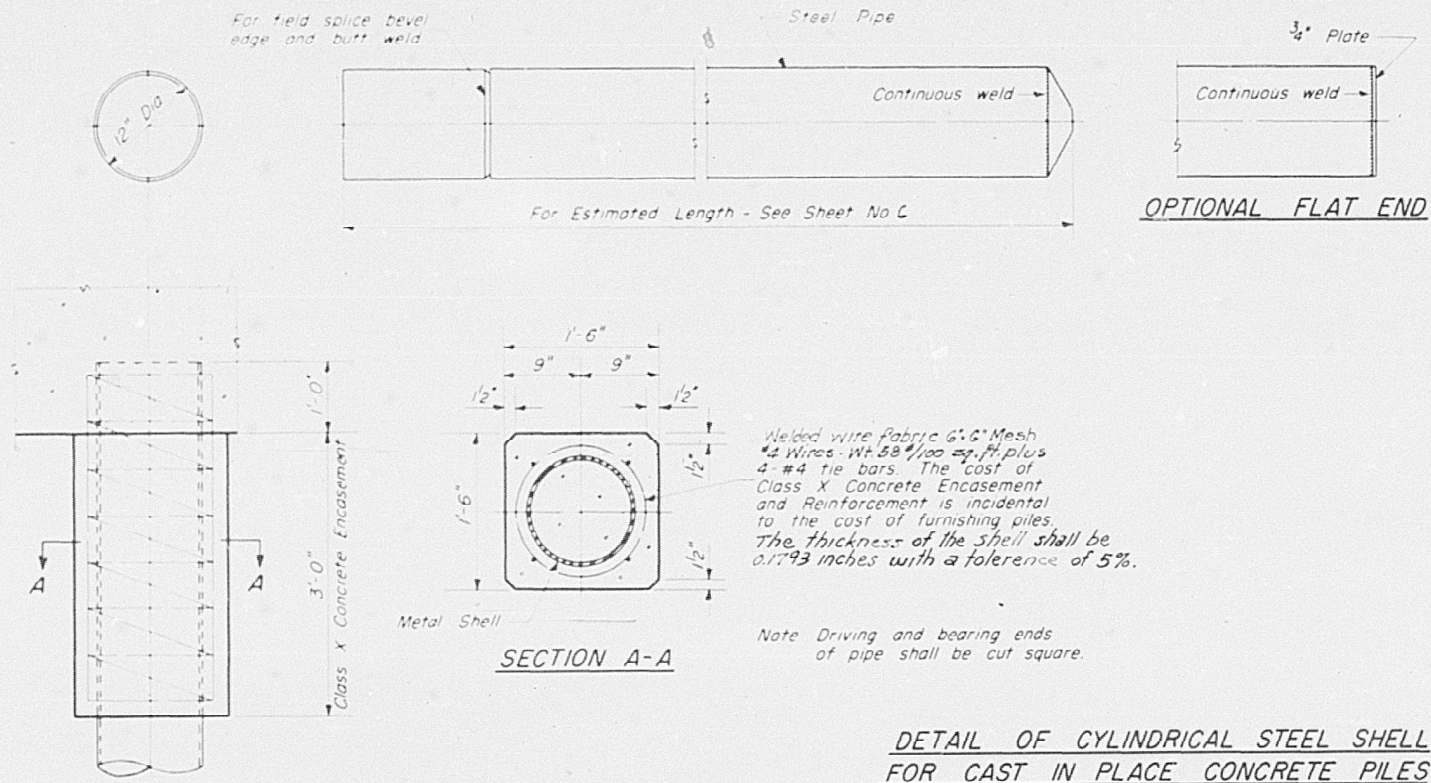
A-8-L (15° - 35°) 7-18-62 Rev. 11-27-62

USER NAME = edison.zohfanyi	DESIGNED -	REVISED -
	DRAWN -	REVISED -
	CHECKED -	REVISED -
	DATE -	REVISED -

F.A.I. RTE.	SECTION	COUNTY	TOTAL SHEETS	SHEET NO.
55	60-1HB1-BP	MADISON	13	12
CONTRACT NO. 76T07				

MODEL: Plan Sheet8 (Sheet)  
FILE NAME: c:\pwworking\illinois.gov\edison.zohfanyi\10876107-shd-plan.dgn





MODEL: Plan Sheet9 (Sheet)  
FILE NAME: c:\pwworking\illinois.gov\1020391\0876107-shd-plan.dgn

USER NAME	= edison.zohfonyi	DESIGNED	-	REVISED	-
		DRAWN	-	REVISED	-
		CHECKED	-	REVISED	-
		DATE	-	REVISED	-

STATE OF ILLINOIS  
DEPARTMENT OF TRANSPORTATION

STRUCTURE DETAILS - SN 060-0178

SCALE: SHEET 9 OF 9 SHEETS STA. TO STA.

F.A.I. RTE.	SECTION	COUNTY	TOTAL SHEETS	SHEET NO.
55	60-1HB1-BP	MADISON	13	13
CONTRACT NO. 76T07				
ILLINOIS FED. AID PROJECT				