

STATE OF ILLINOIS  
DEPARTMENT OF TRANSPORTATION

F.A.P. RTE.	SECTION	COUNTY	TOTAL SHEETS	SHEET NO.
71	MBPM 2025-1	DEWITT	24	1
ILLINOIS CONTRACT NO. 70H50				

FOR INDEX OF SHEETS, SEE SHEET NO. 2

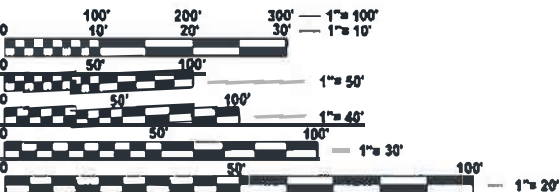
<b>CURRENT TRAFFIC DATA</b> <b>FAP 71 (IL-54)</b>
2019 ADT = 1,850
2039 ADT = 2,050

<b>DESIGN DESIGNATION</b> <b>MINOR ARTERIAL</b>
--

PROPOSED  
HIGHWAY PLANS

FAP ROUTE 71 (IL-54)  
SECTION MBPM 2025-1  
PROJECT STP-6396(770)  
BRIDGE DECK REPAIRS  
DEWITT COUNTY

C-95-037-25



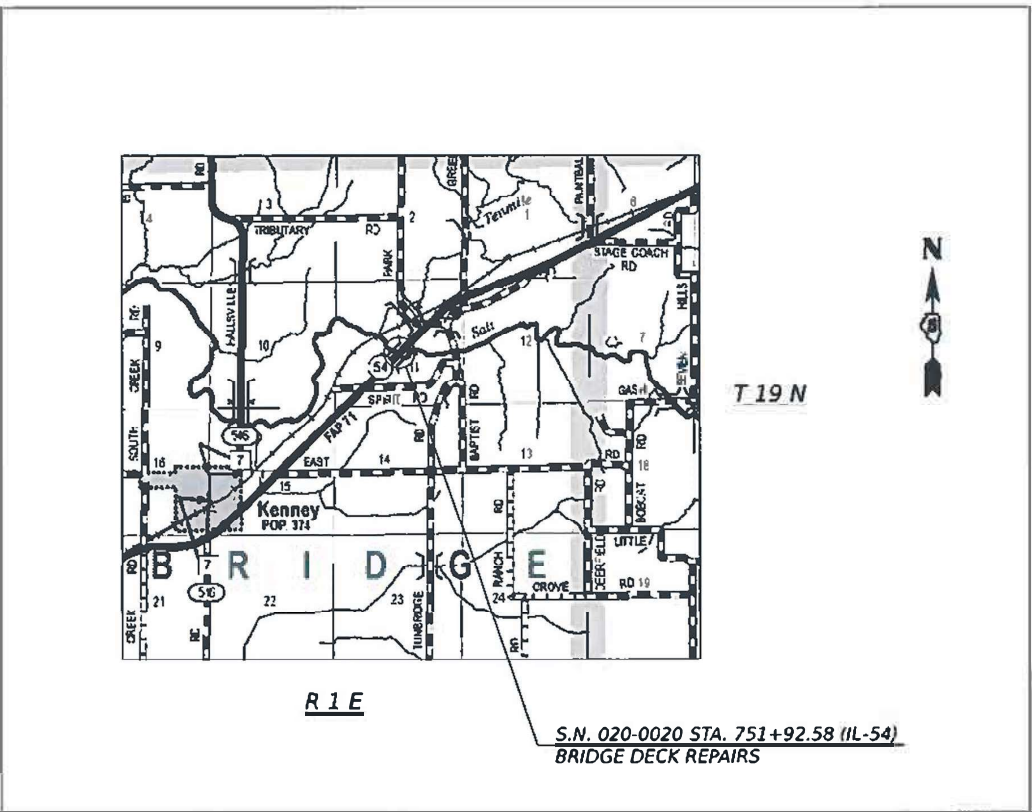
FULL SIZE PLANS HAVE BEEN PREPARED USING STANDARD  
ENGINEERING SCALES. REDUCED SIZED PLANS WILL NOT  
CONFORM TO STANDARD SCALES. IN MAKING MEASUREMENTS  
ON REDUCED PLANS, THE ABOVE SCALES MAY BE USED.

J.U.L.I.E.  
JOINT UTILITY LOCATION INFORMATION FOR EXCAVATION  
1-800-892-0123  
OR 811

TOWNSHIP: TUNBRIDGE

PROJECT ENGINEER: TIM BRANDENBURG  
PROJECT MANAGER: ERIC SHAWLER  
(217) 465-4181

CONTRACT NO. 70H50



GROSS LENGTH = 450.0 FT. = 0.0852 MILE  
NET LENGTH = 450.0 FT. = 0.0852 MILE

STATE OF ILLINOIS  
DEPARTMENT OF TRANSPORTATION

SUBMITTED January 16 2025  
[Signature]  
REGIONAL ENGINEER

March 21 2025  
[Signature]  
ENGINEER OF DESIGN AND ENVIRONMENT

March 21 2025  
[Signature]  
DIRECTOR OF HIGHWAYS PROJECT IMPLEMENTATION

PRINTED BY THE AUTHORITY  
OF THE STATE OF ILLINOIS

INDEX OF SHEETS

SHEET NO.	ITEM
1	COVER SHEET
2	INDEX OF SHEETS
2	LIST OF STANDARDS
2	GENERAL NOTES
3-5	SUMMARY OF QUANTITIES
6-7	STAGING DETAILS
8-22	STRUCTURE PLANS S.N. 020-0020
23-24	WIDTH RESTRICION SIGNING

GENERAL NOTES

G.N.-105.09A

ALL ELEVATIONS SHOWN IN THE PLANS ARE BASED ON NORTH AMERICAN VERTICAL DATUM OF 1988. (NAVD 88)

THERE ARE NO COMMITMENTS ASSOCIATED WITH THIS PROJECT.

LIST OF HIGHWAY STANDARDS

STANDARD NO.	DESCRIPTION
000001-08	STANDARD SYMBOLS, ABBREVIATIONS AND PATTERNS
001001-02	AREAS OF REINFORCEMENT BARS
001006	DECIMAL OF AN INCH AND FOOT
701001-02	OFF ROAD OPERATIONS, 2L,2W, MORE THAN 15'
701006-05	OFF ROAD OPERATIONS, 2L,2W, 15' TO 24" FROM EDGE OF PAVEMENT
701201-05	LANE CLOSURE, 2L,2W, DAY ONLY, FOR SPEEDS > 45 MPH
701301-04	LANE CLOSURE, 2L,2W, SHORT TMIE OPERATIONS
701316-14	LANE CLOSURE, 2L, 2W BRIDGE REPAIR
701321-19	LANE CLOSURE, 2L, 2W BRIDGE REPAIR WITH BARRIER
701901-10	TRAFFIC CONTROL DEVICES
704001-08	TEMPORARY CONCRETE BARRIER
D5- X7200201	WITDTH RESTRICTION SIGNS

MODEL: Index [Sheet]  
FILE NAME: c:\p\work\pwtolshawleres\1031465\70H50\_Sht-Ind-St-Cn.dgn

MODEL: Pay Items 1 [Sheet]  
FILE NAME: c:\p\\_work\p\wd\shawleres\1031465\70H50\_Sht-SQ.dgn

0013

DEWITT CO.
FAP 71 (IL-54)
RURAL / ARTERIAL
BRIDGE DECK REPAIR
S.N. 020-0020
80% FEDERAL / 20% STATE
TOTAL

CODE NO.	ITEM	UNIT	QUANTITY
50102400	CONCRETE REMOVAL	CU YD	10.2
50300255	CONCRETE SUPERSTRUCTURE	CU YD	10.2
50300300	PROTECTIVE COAT	SQ YD	25.0
50800205	REINFORCEMENT BARS, EPOXY COATED	POUND	1,090.0
50800515	BAR SPLICERS	EACH	24.0
52000110	PREFORMED JOINT STRIP SEAL	FOOT	77.0
67000500	ENGINEER'S FIELD OFFICE, TYPE B	CAL MO	3.0
67100100	MOBILIZATION	L SUM	1.0
70100100	TRAFFIC CONTROL AND PROTECTION, STANDARD 701316	EACH	1.0
70100405	TRAFFIC CONTROL AND PROTECTION, STANDARD 701321	EACH	1.0
70100450	TRAFFIC CONTROL AND PROTECTION, STANDARD 701201	L SUM	1.0
70106500	TEMPORARY BRIDGE TRAFFIC SIGNALS	EACH	1.0
70107025	CHANGEABLE MESSAGE SIGN	CAL DA	12.0

\* SPECIALTY ITEM

	USER NAME = eric.shawler	DESIGNED -	REVISED -	STATE OF ILLINOIS DEPARTMENT OF TRANSPORTATION	SUMMARY OF QUANTITIES S.N. 020-0020			F.A.P RTE.	SECTION	COUNTY	TOTAL SHEETS	SHEET NO.
		DRAWN -	REVISED -					71	MBPM 2025-1	DEWITT	24	3
		CHECKED -	REVISED -					CONTRACT NO. 70H50				
	PLOT DATE = 1/9/2025	DATE -	REVISED -		SCALE:	SHEET 1	OF 3 SHEETS	STA.	TO STA.	ILLINOIS FED. AID PROJECT		

MODEL: Pay Items 2 [Sheet]  
FILE NAME: c:\pw\work\pwrtdat\lawleresd1031465\70H50\_Sht-SQQ.dgn

0013

DEWITT CO.
FAP 71 (IL-54)
RURAL / ARTERIAL
BRIDGE DECK REPAIR
S.N. 020-0020
80% FEDERAL / 20% STATE
TOTAL

CODE			TOTAL
NO.	ITEM	UNIT	QUANTITY
70400100	TEMPORARY CONCRETE BARRIER	FOOT	800.0
70400200	RELOCATE TEMPORARY CONCRETE BARRIER	FOOT	800.0
70600250	IMPACT ATTENUATORS, TEMPORARY (NON- REDIRECTIVE), TEST LEVEL 3	EACH	2.0
70600350	IMPACT ATTENUATORS, RELOCATE (NON- REDIRECTIVE), TEST LEVEL 3	EACH	2.0
78300202	PAVEMENT MARKING REMOVAL - WATER BLASTING	SQ FT	455.0
X1000002	HIGH FRICTION SURFACE TREATMENT FOR BRIDGE DECK SURFACES	SQ YD	1,511.0
X4510050	HIGH FRICTION SURFACE TREATMENT CRACK FILLING	FOOT	75.0
X5051206	STRUCTURAL STEEL REPAIR	POUND	1,860.0
X6050222	FILLING INLETS, TEMPORARY	EACH	4.0
X7200201	WIDTH RESTRICTION SIGNING	L SUM	1.0
Z0001800	APPROACH SLAB REPAIR (PARTIAL DEPTH)	SQ YD	2.0
Z0012754	STRUCTURAL REPAIR OF CONCRETE (DEPTH EQUAL TO OR LESS THAN 5 INCHES)	SQ FT	71.6
Z0013798	CONSTRUCTION LAYOUT	L SUM	1.0

\* SPECIALTY ITEM

	USER NAME = eric.shawler	DESIGNED -	REVISED -	STATE OF ILLINOIS DEPARTMENT OF TRANSPORTATION	SUMMARY OF QUANTITIES S.N. 020-0020			F.A.P RTE.	SECTION	COUNTY	TOTAL SHEETS	SHEET NO.
		DRAWN -	REVISED -					71	MBPM 2025-1	DEWITT	24	4
		CHECKED -	REVISED -					CONTRACT NO. 70H50				
	PLOT DATE = 1/9/2025	DATE -	REVISED -		SCALE:	SHEET 2	OF 3	SHEETS	STA.	TO STA.	ILLINOIS   FED. AID PROJECT	

0013

DEWITT CO.
FAP 71 (IL-54)
RURAL / ARTERIAL
BRIDGE DECK REPAIR
S.N. 020-0020
80% FEDERAL / 20% STATE
TOTAL

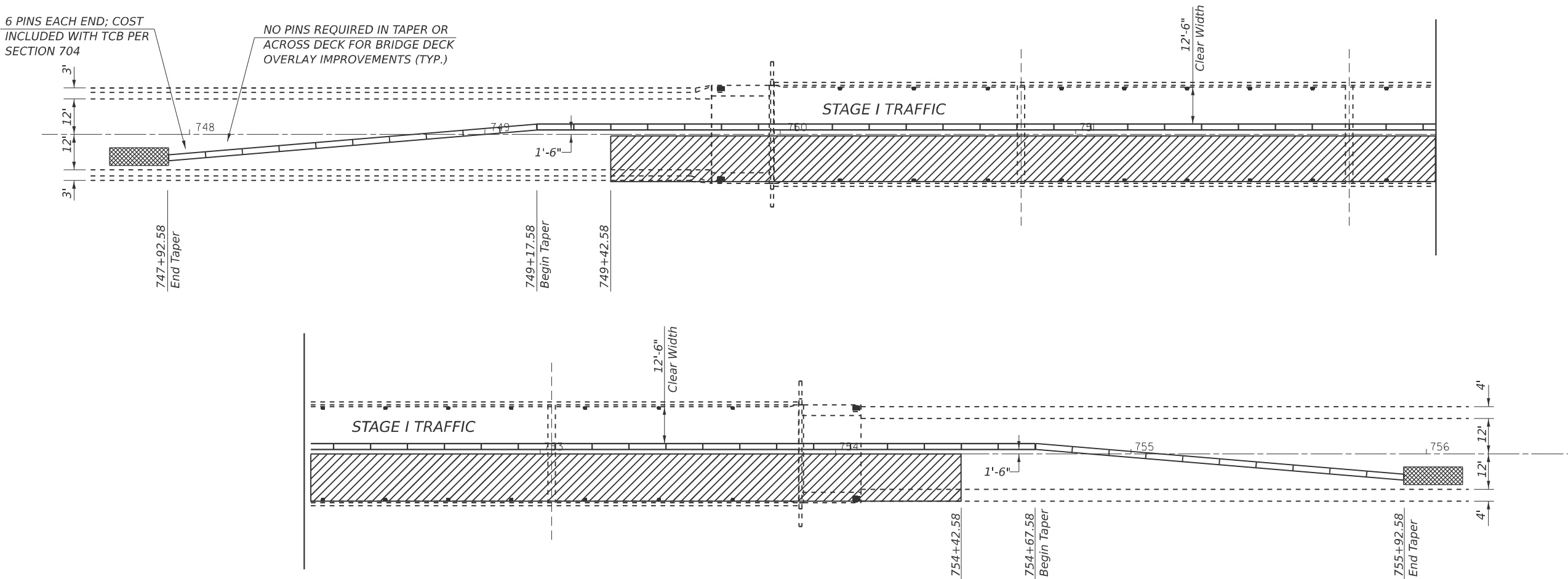
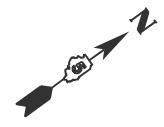
[illegible]

\* SPECIALTY ITEM

FILE NAME:	USER NAME = eric.shawler	DESIGNED -	REVISED -	STATE OF ILLINOIS DEPARTMENT OF TRANSPORTATION	SUMMARY OF QUANTITIES S.N., 020-0020					F.A.P RTE.	SECTION	COUNTY	TOTAL SHEETS	SHEET NO.
		DRAWN -	REVISED -							71	MBPM 2025-1	DEWITT	24	5
		CHECKED -	REVISED -											
	PLOT DATE = 1/9/2025	DATE -	REVISED -		CONTRACT NO. 70H50									
					SCALE:	SHEET 3	OF 3 SHEETS	STA.	TO STA.	ILLINOIS   FED. AID PROJECT				

MODEL: Pay Items 3 [Sheet]  
FILE NAME: c:\pw\_work\pwidot\shawleresid10314651701450\_Sht-SOQ.dgn

STAGE I TEMPORARY CONCRETE BARRIER LAYOUT



PLAN NOTES:

ALL STAGING DETAILS SHALL BE IN ACCORDANCE WITH TRAFFIC CONTROL AND PROTECTION STANDARD 701321 AND PAID FOR AT THE CONTRACT UNIT PRICE PER EACH LOCATION.

ALL WORK WITHOUT TEMPORARY CONCRETE BARRIER IN PLACE SHALL BE IN ACCORDANCE WITH TRAFFIC CONTROL AND PROTECTION STANDARDS 701201, 701301 AND 701316.

FOR ADDITIONAL DETAILS ASSOCIATED WITH TEMPORARY CONCRETE BARRIER, SEE HIGHWAY STANDARD 704001.

EXISTING OR TEMPORARY PAVEMENT MARKINGS SHALL BE ON BOTH SIDES OF THE OPEN LANE FROM STOP BAR TO STOP BAR. PAVEMENT MARKINGS THAT CONFLICT WITH STAGED TRAFFIC MARKINGS SHALL BE REMOVED. THIS WORK SHALL BE INCLUDED IN THE COST FOR TRAFFIC CONTROL AND PROTECTION STANDARD 701321.

REFLECTORS SHALL BE ATTACHED TO GUARDRAIL AND BARRIER WALL AT 25 FOOT CENTERS. COST INCLUDED WITH TRAFFIC CONTROL AND PROTECTION STANDARD 701321.

PRIOR TO ROUTING TRAFFIC ONTO SHOULDERS, THE CONTRACTOR SHALL SECURE ANY GRATES ON SHOULDER INLETS AS DIRECTED BY ENGINEER.

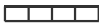


PINNING TEMPORARY CONCRETE BARRIER SHALL BE IN ACCORDANCE WITH THE APPLICABLE PORTIONS OF SECTION 704 OF THE STANDARD SPECIFICATIONS AND SHALL INCLUDE INSTALLATION OF ADDITIONAL ANCHOR PINS ON THE TRAFFIC SIDE OF THE BARRIER WALL WHEN THE DROP-OFF BEHIND THE BARRIER IS LESS THAN 37 INCHES IN DISTANCE FROM THE BARRIER WALL, OR AS DIRECTED BY THE ENGINEER. REFER TO THE BUREAU OF SAFETY PROGRAMS AND ENGINEERING'S POLICY MEMORANDUM STAFETY 4-21 FOR GUIDANCE ON MITIGATING LONGITUDINAL DROP-OFFS AND PINNING.

70400100 TEMPORARY CONCRETE BARRIER

	STATION	TO	STATION	LENGTH
TAPER	LT. 747+92.58		LT. 749+17.58	125.0
	LT. 749+17.58		LT. 754+67.58	550.0
TAPER	LT. 754+67.58		LT. 755+92.58	125.0
SUB-TOTAL =				800.0

BILL OF MATERIALS

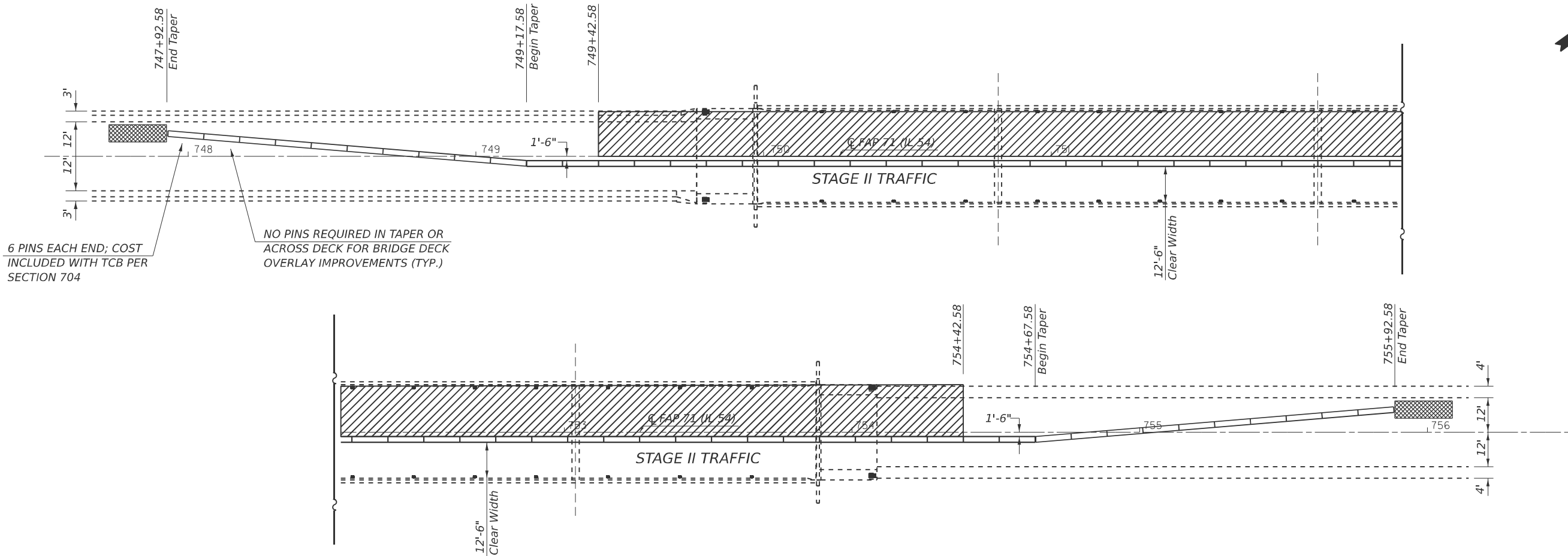
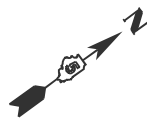
TEMPORARY CONCRETE BARRIER	FOOT	800.0
IMPACT ATTENUATOR TEMPORARY NON-REDIRECTIVE TEST LEVEL 3	EACH	2.0

-  TEMPORARY CONCRETE BARRIER
-  PROPOSED WORK AREA
-  IMPACT ATTENUATOR, TEMPORARY, NON-REDIRECTIVE TEST LEVEL 3

MODEL: Staging Details (Sheet)  
FILE NAME: c:\p\work\pawid\shawleresd1031465\70H50\_Sht-Staging.dgn

	USER NAME = eric.shawler	DESIGNED -	REVISED -	STATE OF ILLINOIS DEPARTMENT OF TRANSPORTATION	STAGE I TEMPORARY CONCRETE BARRIER LAYOUT S.N. 020-0020			F.A.P. RTE.	SECTION	COUNTY	TOTAL SHEETS	SHEET NO.
		DRAWN - ESS	REVISED -					71	MBPM 2025-1	DEWITT	24	6
		CHECKED - TJB	REVISED -					CONTRACT NO. 70H50				
	PLOT DATE = 1/9/2025	DATE -	REVISED -					ILLINOIS FED. AID PROJECT				
SCALE:		SHEET 1 OF 2 SHEETS		STA.		TO STA.						

STAGE II TEMPORARY CONCRETE BARRIER LAYOUT



70400200 RELOCATE TEMPORARY CONCRETE BARRIER

		STATION	TO	STATION	LENGTH
TAPER	RT.	747+92.58		RT. 749+17.58	125.0
		RT. 749+17.58		RT. 754+67.58	550.0
TAPER	RT.	754+67.58		RT. 755+92.58	125.0
SUB-TOTAL =					800.0

PLAN NOTES:

ALL STAGING DETAILS SHALL BE IN ACCORDANCE WITH TRAFFIC CONTROL AND PROTECTION STANDARD 701321 AND PAID FOR AT THE CONTRACT UNIT PRICE PER EACH LOCATION.

ALL WORK WITHOUT TEMPORARY CONCRETE BARRIER IN PLACE SHALL BE IN ACCORDANCE WITH TRAFFIC CONTROL AND PROTECTION STANDARDS 701201, 701301 AND 701316.

FOR ADDITIONAL DETAILS ASSOCIATED WITH TEMPORARY CONCRETE BARRIER, SEE HIGHWAY STANDARD 704001.

EXISTING OR TEMPORARY PAVEMENT MARKINGS SHALL BE ON BOTH SIDES OF THE OPEN LANE FROM STOP BAR TO STOP BAR. PAVEMENT MARKINGS THAT CONFLICT WITH STAGED TRAFFIC MARKINGS SHALL BE REMOVED. THIS WORK SHALL BE INCLUDED IN THE COST FOR TRAFFIC CONTROL AND PROTECTION STANDARD 701321.

REFLECTORS SHALL BE ATTACHED TO GUARDRAIL AND BARRIER WALL AT 25 FOOT CENTERS. COST INCLUDED WITH TRAFFIC CONTROL AND PROTECTION STANDARD 701321.

PRIOR TO ROUTING TRAFFIC ONTO SHOULDERS, THE CONTRACTOR SHALL SECURE ANY GRATES ON SHOULDER INLETS AS DIRECTED BY ENGINEER.

PINNING TEMPORARY CONCRETE BARRIER SHALL BE IN ACCORDANCE WITH THE APPLICABLE PORTIONS OF SECTION 704 OF THE STANDARD SPECIFICATIONS AND SHALL INCLUDE INSTALLATION OF ADDITIONAL ANCHOR PINS ON THE TRAFFIC SIDE OF THE BARRIER WALL WHEN THE DROP-OFF BEHIND THE BARRIER IS LESS THAN 37 INCHES IN DISTANCE FROM THE BARRIER WALL, OR AS DIRECTED BY THE ENGINEER. REFER TO THE BUREAU OF SAFETY PROGRAMS AND ENGINEERING'S POLICY MEMORANDUM STAFETY 4-21 FOR GUIDANCE ON MITIGATING LONGITUDINAL DROP-OFFS AND PINNING.

BILL OF MATERIALS

ITEM	UNIT	TOTAL
REL. TEMPORARY CONCRETE BARRIER	FOOT	800.0
REL. IMPACT ATTENUATOR TEMPORARY NON-REDIRECTIVE TEST LEVEL 3	EACH	2.0

- TEMPORARY CONCRETE BARRIER
- PROPOSED WORK AREA
- IMPACT ATTENUATOR, TEMPORAY, NON-REDIRECTIVE TEST LEVEL 3

MODEL: Staging Details-1 (Sheet)  
FILE NAME: c:\p\work\pilot\stahawres\1031465\70H50\_Sht-Staging.dgn

USER NAME = eric.shawler	DESIGNED -	REVISED -
	DRAWN - ESS	REVISED -
	CHECKED - TJB	REVISED -
PLOT DATE = 1/8/2025	DATE -	REVISED -

STATE OF ILLINOIS  
DEPARTMENT OF TRANSPORTATION

STAGE II TEMPORARY CONCRETE BARRIER LAYOUT			
S.N. 020-0020			
SCALE:	SHEET 2	OF 2 SHEETS	STA. TO STA.

F.A.P RTE.	SECTION	COUNTY	TOTAL SHEETS	SHEET NO.
71	MBPM 2025-1	DEWITT	24	7
CONTRACT NO. 70H50				
ILLINOIS FED. AID PROJECT				

THE EXISTING STRUCTURE IS A FOUR SPAN STEEL GIRDER STRUCTURE WITH A BACK-TO-BACK ABUTMENT LENGTH OF 392'-11 3/8". THE STRUCTURE MEASURES 32'-0" FROM FACE-TO-FACE OF PARAPET AND HAS AN OUT-TO-OUT WIDTH OF 35'-2". THE SUPERSTRUCTURE CONSISTS OF 5 40" WEB GIRDER SUPPORTING A 7 1/2" REINFORCED CONCRETE DECK ON PILE SUPPORTED R.C. SPILL THRU ABUTMENTS AND R.C. PIERS. THE SLOPES ARE PROTECTED WITH RIPRAP.

*LOCATION SKETCH*

PLAN DIMENSIONS AND DETAILS RELATIVE TO THE EXISTING PLANS ARE SUBJECT TO NOMINAL CONSTRUCTION VARIATIONS. THE CONTRACTOR SHALL VERIFY EXISTING DIMENSIONS AND DETAILS AFFECTING NEW CONSTRUCTION AND MAKE NECESSARY APPROVED ADJUSTMENTS PRIOR TO CONSTRUCTION OR ORDERING OF MATERIALS. SUCH VARIATIONS SHALL NOT BE CAUSE FOR ADDITIONAL COMPENSATION FOR A CHANGE IN SCOPE OF WORK, HOWEVER, THE CONTRACTOR WILL BE PAID FOR THE QUANTITY ACTUALLY FURNISHED AT THE UNIT PRICE BID FOR THE WORK.

SEE SPECIAL PROVISION "DECK SLAB REPAIR" FOR ADDITIONAL REQUIREMENTS PERTAINING TO DECK SLAB REPAIR.

1. *Removal of Hatch Blocks and Deck Ends.*
2. *Perform Partial Depth Patching on Approaches & Bridge Decks.*
3. *Perform Structural Steel Repair.*
4. *Perform Structural Repair of Concrete 5"*
5. *Place Reinforcement Bars & Locking Edge Rails at Joints.*
6. *Pour Concrete Superstructure.*
7. *Insert Rubber Strip Seal into Locking Edge Rails.*
8. *Place High Friction Surface Treatment Crack Filling.*
9. *Place High Friction Surface for Bridge Deck Surfaces.*

ITEM	UNIT	TOTAL
CONCRETE REMOVAL	CU YD	10.2
CONCRETE SUPERSTRUCTURE	CU YD	10.2
PROTECTIVE COAT	SQ YD	25.0
REINFORCEMENT BARS EPOXY COATED	POUND	1,090.0
BAR SPLICERS	EACH	24.0
PERFORMED JOINT STRIP SEAL	FOOT	77.0
APPROACH SLAB REPAIR (PARTIAL DEPTH)	SQ YD	2.0
DECK SLAB REPAIR (PARTIAL)	SQ YD	14.0
STRUCTURAL STEEL REPAIR	POUND	1,860.0
STRUCTURAL REPAIR OF CONCRETE (DEPTH = TO OR < 5")	SQ FT	71.6
HIGH FRICTION SURFACE TREATMENT CRACK FILLING	FOOT	75.0
HIGH FRICTION SURFACE TREATMENT FOR BRIDGE DECK SURFACE	SQ YD	1,511.0

LICENSED STRUCTURAL ENGINEER  
 JAYME F. SCHIFF  
 081-005540  
 STATE OF ILLINOIS

EXPIRES 11-30-2026

Jayne F. Schiff

USER NAME = eric.shawler	DESIGNED -	REVISED -
	DRAWN - ESS	REVISED -
	CHECKED - TJB	REVISED -
PILOT DATE = 1/8/2025	DATE -	REVISED -

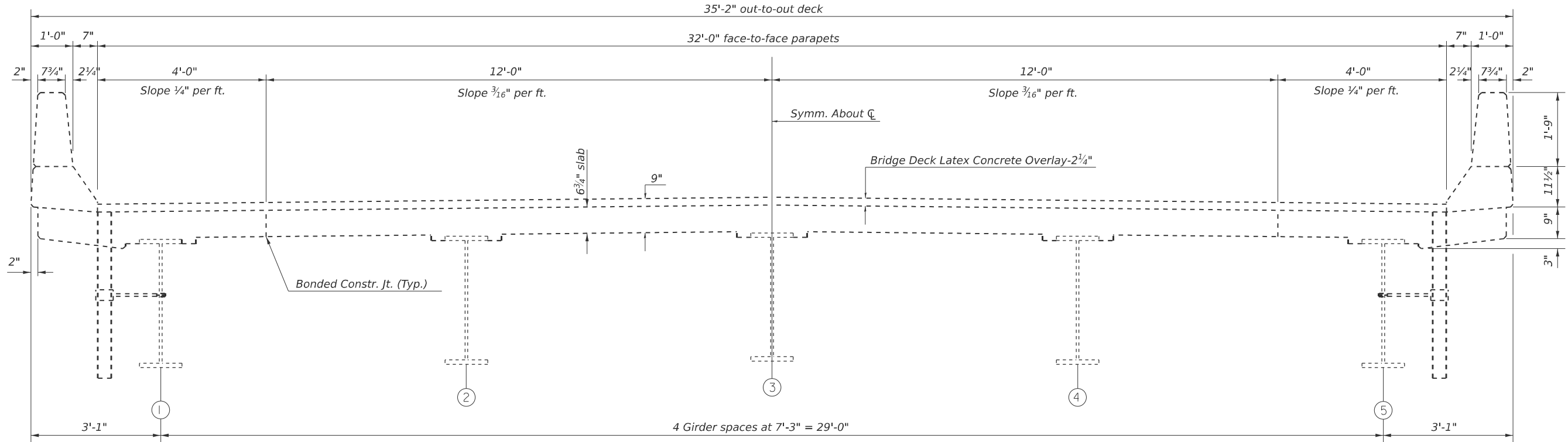
**GENERAL PLAN & ELEVATION**  
**S.N. 020-0020**

F.A.P RTE.	SECTION	COUNTY	TOTAL SHEETS	SHEET NO.
71	MBPM 2025-1	DEWITT	24	8
		CONTRACT NO. 70H50		
		ILLINOIS	FED. AID PROJECT	

MODEL: Str. Plans 1 [Sheet]  
FILE NAME: c:\pw work\pwwdott\shawleres\d1031465\D570H50 Sht-Str.Plans.dgn

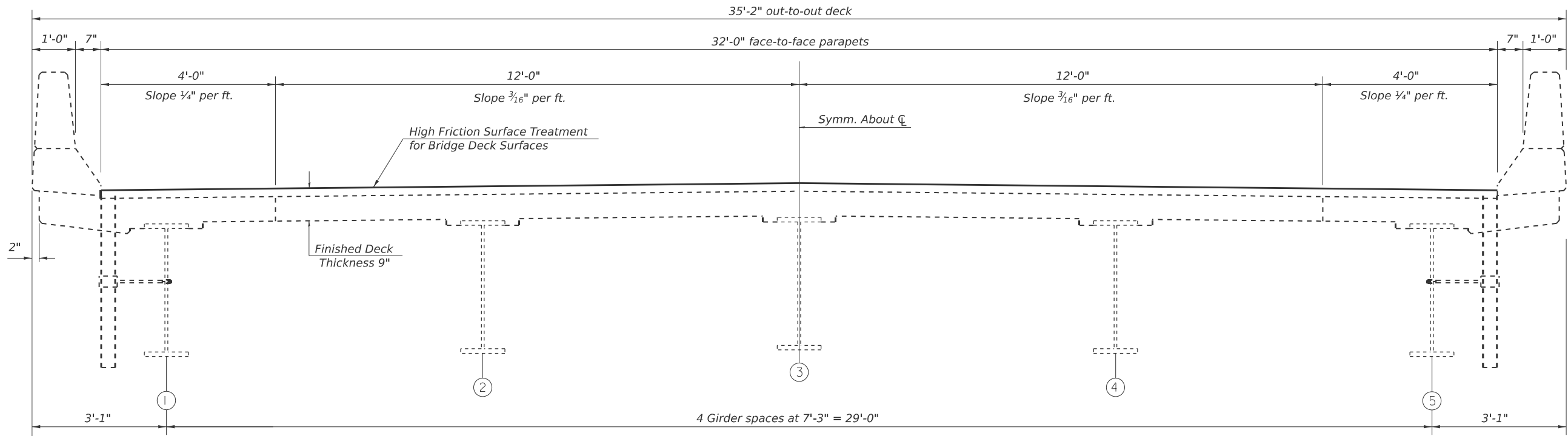


EXISTING DECK CROSS SECTION  
S.N. 020-0020



VIEW EAST

PROPOSED DECK CROSS SECTION  
S.N. 020-0020



VIEW EAST

MODEL: Str. Plans 2 (Sheet)  
FILE NAME: c:\p\work\jw\shawleresd\1031465\0570H50\_Str-Str.Plans.dgn

USER NAME = eric.shawler	DESIGNED -	REVISED -
	DRAWN - ESS	REVISED -
	CHECKED - TJB	REVISED -
PLOT DATE = 1/8/2025	DATE -	REVISED -

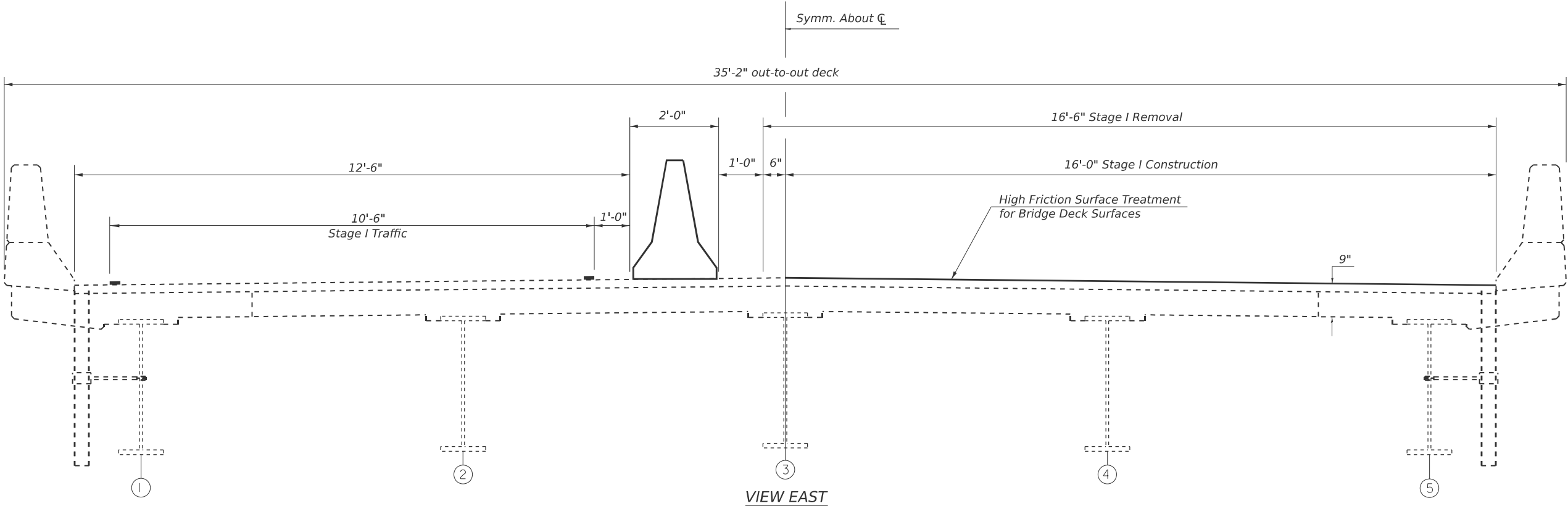
STATE OF ILLINOIS  
DEPARTMENT OF TRANSPORTATION

TYPICAL CROSS SECTION  
S.N. 020-0020

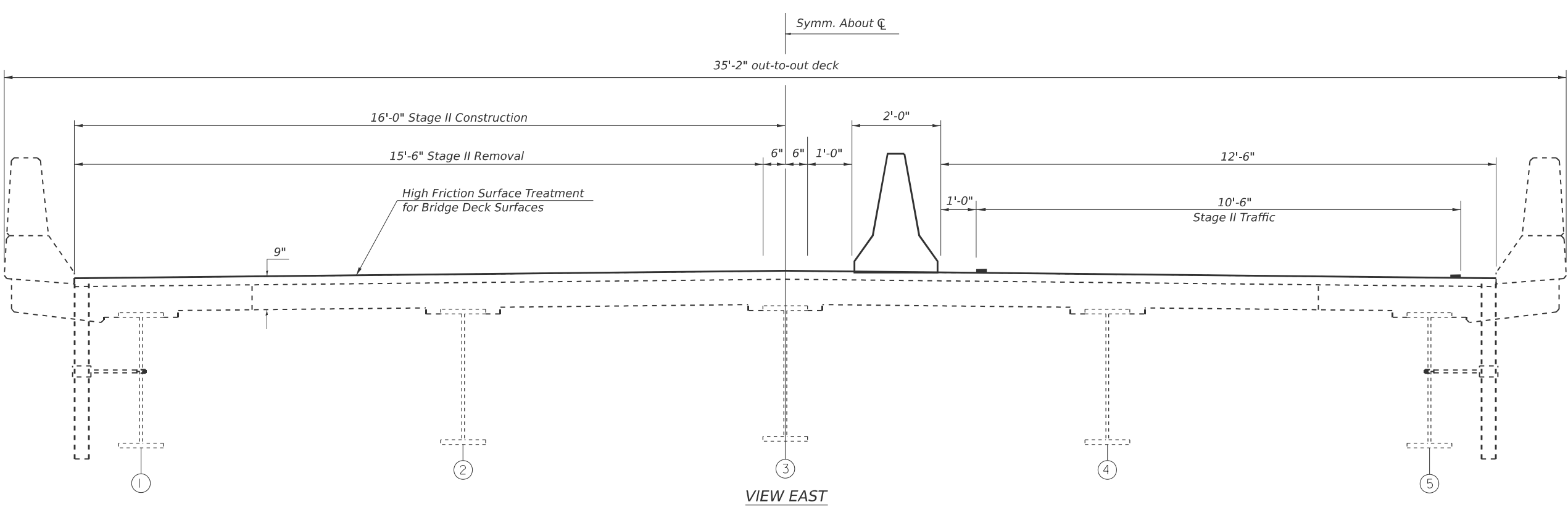
SCALE: SHEET 2 OF 15 SHEETS STA. TO STA.

F.A.P. RTE.	SECTION	COUNTY	TOTAL SHEETS	SHEET NO.
71	MBPM 2025-1	DEWITT	24	9
CONTRACT NO. 70H50				
ILLINOIS FED. AID PROJECT				

STAGE I CONSTRUCTION DETAILS  
S.N. 020-0020



STAGE II CONSTRUCTION DETAILS  
S.N. 020-0020



MODEL: Sfr\_Plans 3 (Sheet)  
FILE NAME: c:\p\work\jw\shawleresd\1031465\0570H50\_Sfr\_Plans.dgn

USER NAME = eric.shawler	DESIGNED -	REVISED -
	DRAWN - ESS	REVISED -
	CHECKED - TJB	REVISED -
PLOT DATE = 1/8/2025	DATE -	REVISED -

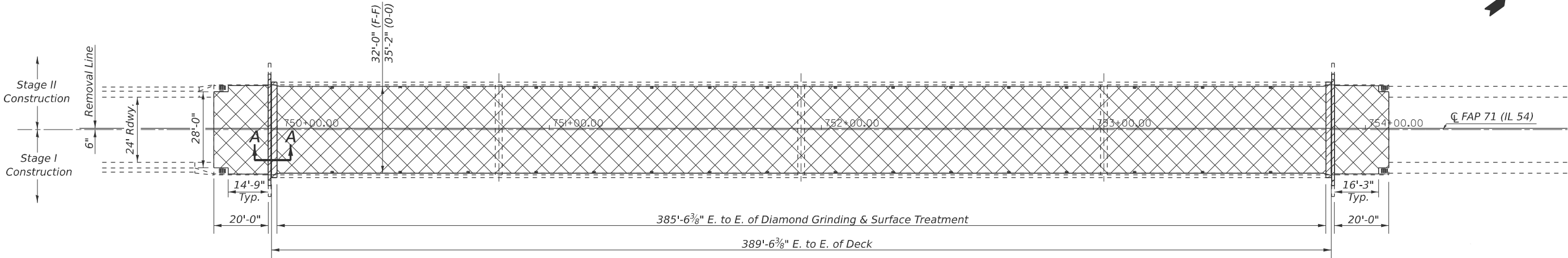
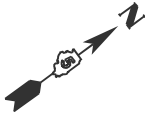
STATE OF ILLINOIS  
DEPARTMENT OF TRANSPORTATION

CROSS SECTION STAGING DETAILS  
S.N. 020-0020

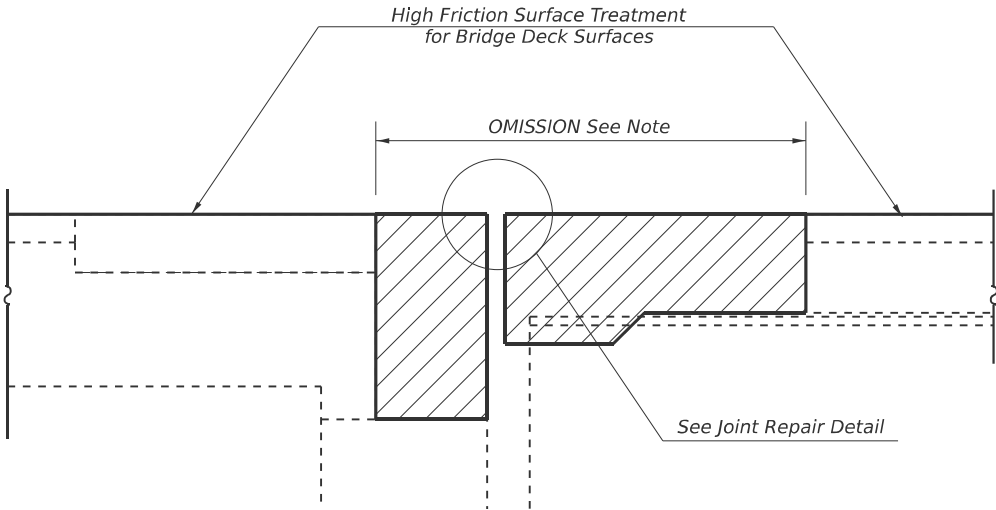
SCALE: SHEET 3 OF 15 SHEETS STA. TO STA.

F.A.P. RTE.	SECTION	COUNTY	TOTAL SHEETS	SHEET NO.
71	MBPM 2025-1	DEWITT	24	10
CONTRACT NO. 70H50				
ILLINOIS FED. AID PROJECT				

WEARING SURFACE PLAN  
STR. 020-0020



PLAN VIEW



SECTION A-A

NOTE

DECK DRAINS AND JOINTS SHALL BE TEMPORALLY COVERED BEFORE THE HIGH FRICKTION SURFACE TREATMENT IS APPLIED TO PROTECT AND COVER RUN OFF. THE MATERIAL USED TO COVER THE DRAINS AND JOINTS SHALL BE REMOVED AND DISPOSED OF UPON THE COMPLETION OF THE HIGH FRICTION SURFACE TREATMENT. COST INCLUDED WITH HIGH FRICTION SURFACE TREATMENT.

PLACEMENT OF OVERLAPPING HIGH FRICTION SURFACE TREATMENT WILL NOT BE ALLOWED AT THE WHEEL LANES.

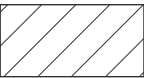
PAVEMENT MARKING - WATER BLASING - LINE 4"								
								78300202
								PAVEMENT MARKING - REMOVAL WATER BLASING
ITEM	LINE TYPE	LOCATION	FROM STA.	OFFSET	TO STA.	OFFSET	STRIPES	SQ FT
FAP 71 (IL-54) STRUCTURE 020-0020								
LANE LINE	SD	ACROSS STRUCTURE IL-54	749+75	0	754+10	0	11.0	18.3
LANE LINE	SOLID	ACROSS STRUCTURE IL-54	749+75	0	754+10	0	NA	144.9
LANE LINE	SOLID	ACROSS STRUCTURE IL-54	749+75	12' RT	754+10	12' RT	NA	144.9
LANE LINE	SOLID	ACROSS STRUCTURE IL-54	749+75	12' LT	754+10	12' LT	NA	144.9
CONTRACT 70H50 SUB-TOTAL								453.0
ROUNDED								455.0

SD = SKIP-DASH

LEGEND



HIGH FRICTION SURFACE TREATMENT FOR BRIDGE DECK SURFACES



CONCRETE REMOVAL & CONCRETE SUPERSTRUCTURE

BILL OF MATERIALS

ITEM	UNIT	TOTAL
PAVEMENT MARKIING REMOVAL - WATER BLASTING	SQ FT	455.0
HIGH FRICTION SURFACE TREATMENT CRACK FILLING	FOOT	75.0
HIGH FRICTION SURFACE TREATMENT FOR BRIDGE DECK SURFACES	SQ YD	1,511.0

MODEL: Str. Plans 4 (Sheet)  
FILE NAME: c:\pawork\jw\shawleresd1031465\0570H50\_Str-Str.Plans.dgn

USER NAME = eric.shawler	DESIGNED -	REVISED -
	DRAWN - ESS	REVISED -
	CHECKED - TJB	REVISED -
PLOT DATE = 1/8/2025	DATE -	REVISED -

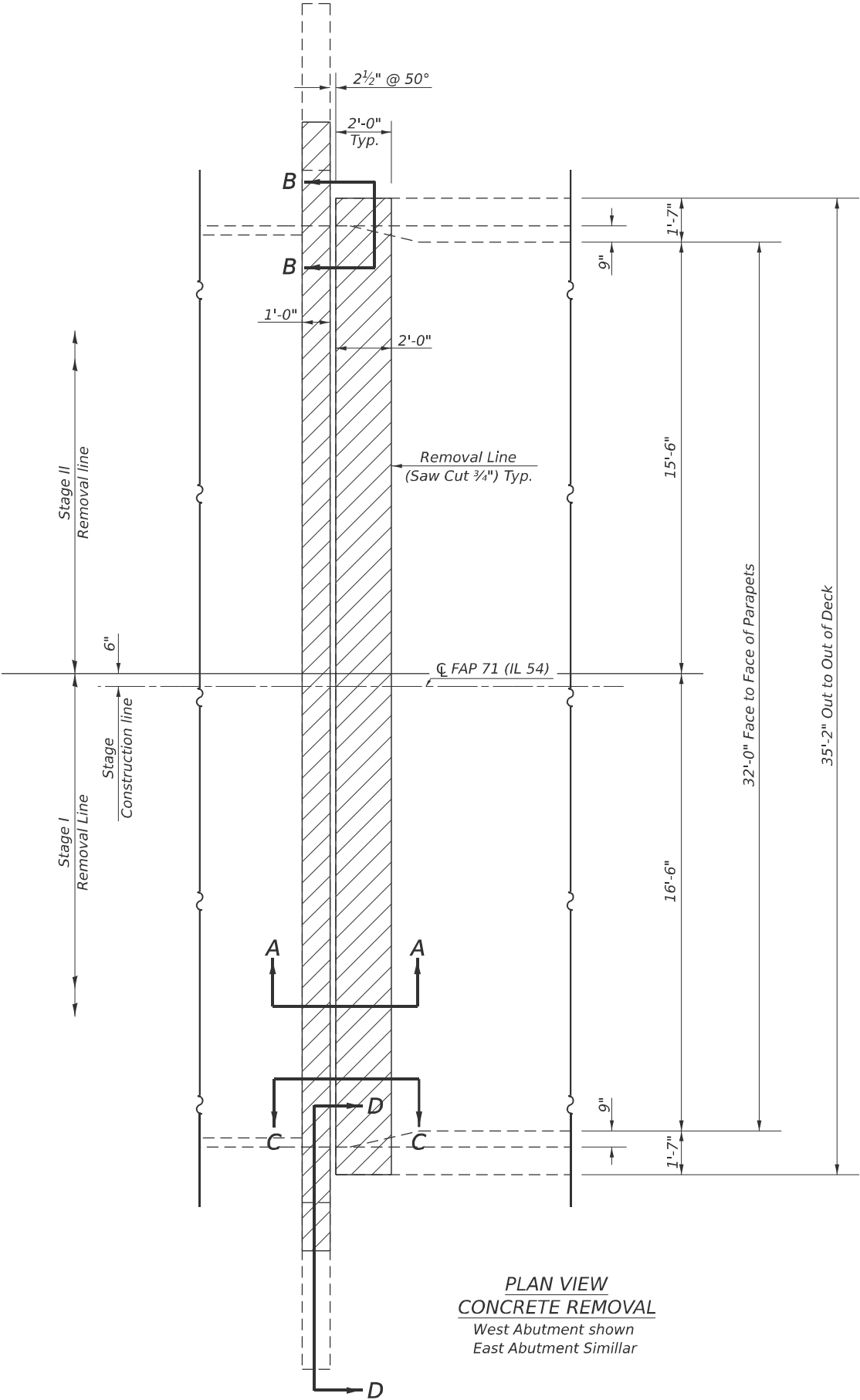
STATE OF ILLINOIS  
DEPARTMENT OF TRANSPORTATION

WEARING SURFACE PLAN  
S.N. 020-0020

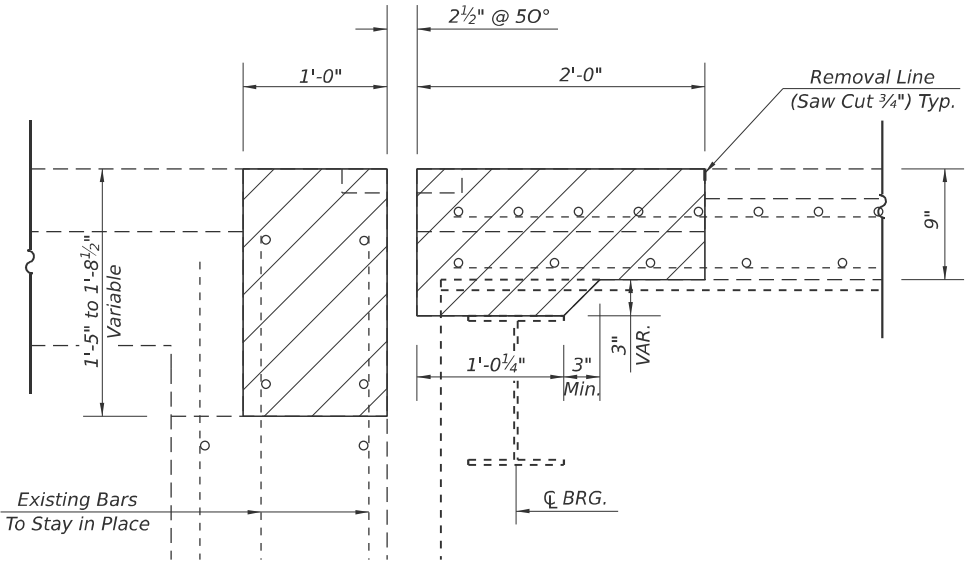
SCALE: SHEET 4 OF 15 SHEETS STA. TO STA.

F.A.P RTE.	SECTION	COUNTY	TOTAL SHEETS	SHEET NO.
71	MBPM 2025-1	DEWITT	24	11
CONTRACT NO. 70H50				
ILLINOIS FED. AID PROJECT				

CONCRETE REMOVAL  
S.N. 020-0020



PLAN VIEW  
CONCRETE REMOVAL  
West Abutment shown  
East Abutment Similar



SECTION A-A  
CONCRETE REMOVAL

NOTE:

EXISTING REINFORCEMENT BARS EXTENDING INTO THE REMOVAL AREA SHALL BE CLEANED, STRAIGHTEND AND INCORPORATED INTO THE NEW CONSTRUCTION. ANY REINFORCEMENT BARS THAT ARE DAMAGED DURING CONCRETE REMOVAL SHALL BE REPLACED WITH AN APPROVED BAR SPLICER OR ANCHORAGE SYSTEM. COST INCLUDED WITH CONCRETE REMOVAL.

THE EXISTING EXPANSION JOINT SYSTEM SHALL BE REMOVED COMPLETELY, AS WELL AS ANY FOREIGN MATERIAL THAT HAS ACCUMULATED OR BEEN PLACED IN THE JOINT OPENINGS. THE COST OF THIS WORK IS INCLUDED IN CONCRETE REMOVAL AND NO ADDITIONAL COMPENSATION WILL BE ALLOWED.

THE GUARDRAIL WITHIN THE PARAPET REMOVAL AND REPLACEMENT LIMITS SHALL BE REMOVED TO ALLOW FOR THE REPAIR WORK TO BE COMPLETED. THE CONTRACTOR IS TO SAFELY STORE REMOVED MATERIAL. FOLLOWING COMPLETION OF REPAIR WORK THE CONTRACTOR TO EITHER SAVE AND RE-USE THE EXISTING CAST-IN-PLACE ANCHOR SYSTEM OR USE EPOXY-GROUTED THREADED RODS TO RE-ATTACH THE EXISTING GUARDRAIL. THE COST OF THIS WORK IS INCLUDED IN CONCRETE REMOVAL AND CONCRETE SUPERSTRUCTURE AND NO ADDITIONAL COMPENSATION WILL BE ALLOWED.



CONCRETE REMOVAL

MODEL: Sfr\_Plans 5 (Sheet)  
FILE NAME: c:\p\work\jwd\shawleres\1031465\0570H50\_Sfr-Sfr\_Plans.dgn

PLOT DATE = 1/8/2025	USER NAME = eric.shawler	DESIGNED -	REVISED -
		DRAWN - ESS	REVISED -
		CHECKED - TJB	REVISED -
	DATE -		REVISED -

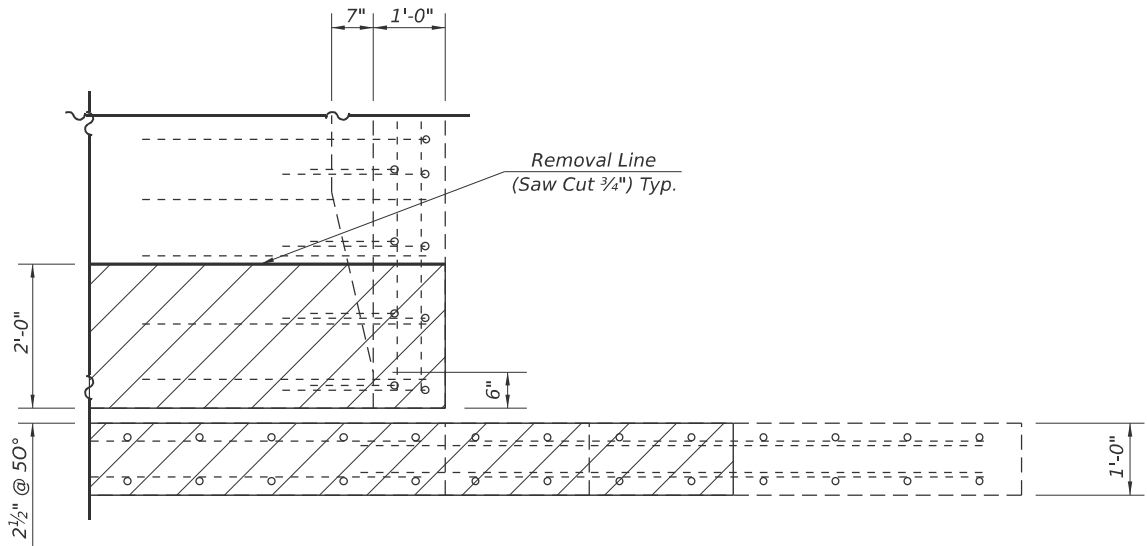
STATE OF ILLINOIS  
DEPARTMENT OF TRANSPORTATION

CONCRETE REMOVAL  
S.N. 020-0020

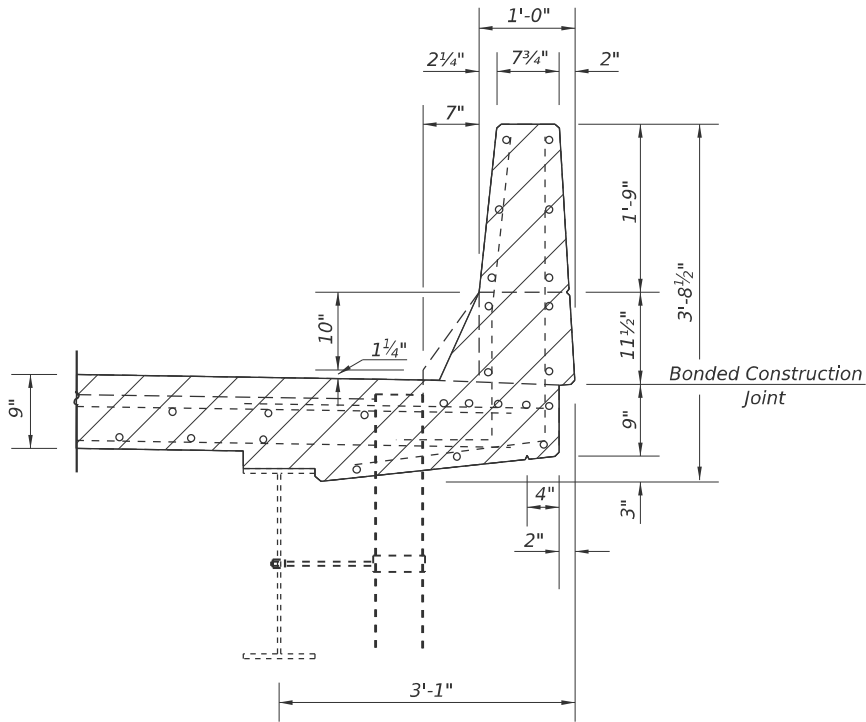
SCALE: SHEET 5 OF 15 SHEETS STA. TO STA.

F.A.P RTE.	SECTION	COUNTY	TOTAL SHEETS	SHEET NO.
71	MBPM 2025-1	DEWITT	24	12
CONTRACT NO. 70H50				
ILLINOIS FED. AID PROJECT				

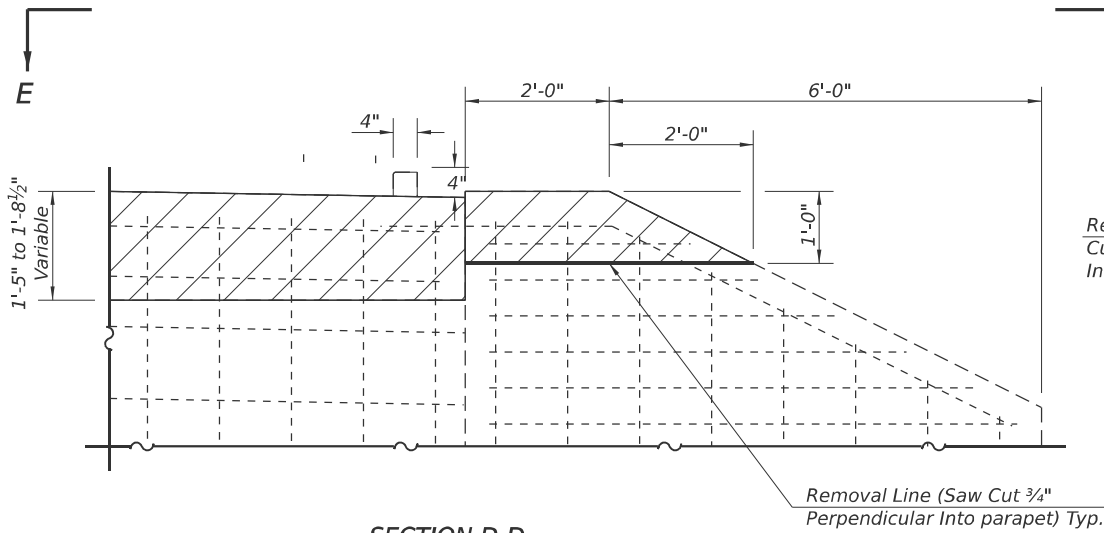
CONCRETE REMOVAL DETAILS  
S.N. 020-0020



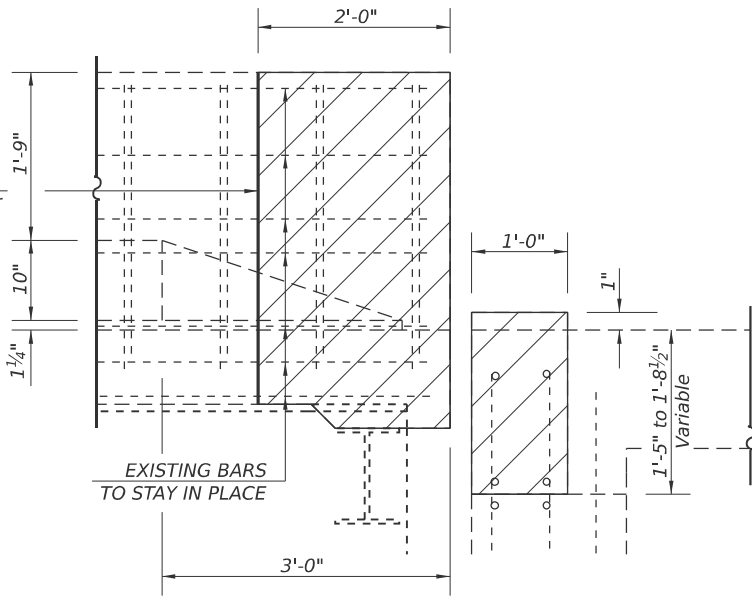
VIEW E-E  
CONCRETE REMOVAL  
ALL WINGSWALLS (SIMILAR)



SECTION B-B  
CONCRETE REMOVAL



SECTION D-D  
CONCRETE REMOVAL  
ALL WINGSWALLS (SIMILAR)



SECTION C-C  
CONCRETE REMOVAL

CONCRETE REMOVAL

BILL OF MATERIALS

ITEM	UNIT	TOTAL
CONCRETE REMOVAL	CU YD	10.2

MODEL: Str. Plans 6 (Sheet)  
FILE NAME: c:\p\work\jw\shawleres\1031465\0570H50\_Str-Str.Plans.dgn

USER NAME = eric.shawler	DESIGNED -	REVISED -
	DRAWN - ESS	REVISED -
	CHECKED - TJB	REVISED -
PLOT DATE = 1/8/2025	DATE -	REVISED -

STATE OF ILLINOIS  
DEPARTMENT OF TRANSPORTATION

CONCRETE REMOVAL DETAILS S.N. 020-0020			
SCALE:	SHEET 6	OF 15 SHEETS	STA. TO STA.

F.A.P RTE.	SECTION	COUNTY	TOTAL SHEETS	SHEET NO.
71	MBPM 2025-1	DEWITT	24	13
CONTRACT NO. 70H50				
ILLINOIS FED. AID PROJECT				

S.N. 020-0020



PRIOR TO POURING THE NEW CONCRETE DECK, ALL HEAVY OR LOOSE RUST, LOOSE MILL SCALE, AND OTHER LOOSE OR POTENTIALLY DETRIMENTAL FOREIGN MATERIAL SHALL BE REMOVED FROM THE SURFACES IN CONTACT WITH THE CONCRETE UTILIZING PNEUMATIC NEEDLE SCALERS OR BY SAND BLASTING. AREAS CLEANED SHALL BE COATED WITH 2 COATS OF ALUMINUM EPOXY MASTIC ARTICLE 1008.03. THE COST WILL BE INCLUDED IN THE PAY ITEM COVERING REMOVAL OF THE EXISTING CONCRETE.

REINFORCEMENT BARS DESIGNATED (E) SHALL BE EPOXY COATED.

USER NAME = eric.shawler	DESIGNED -	REVISED -
	DRAWN - ESS	REVISED -
	CHECKED - TJB	REVISED -
PLOT DATE = 1/8/2025	DATE -	REVISED -

**STATE OF ILLINOIS**  
**DEPARTMENT OF TRANSPORTATION**

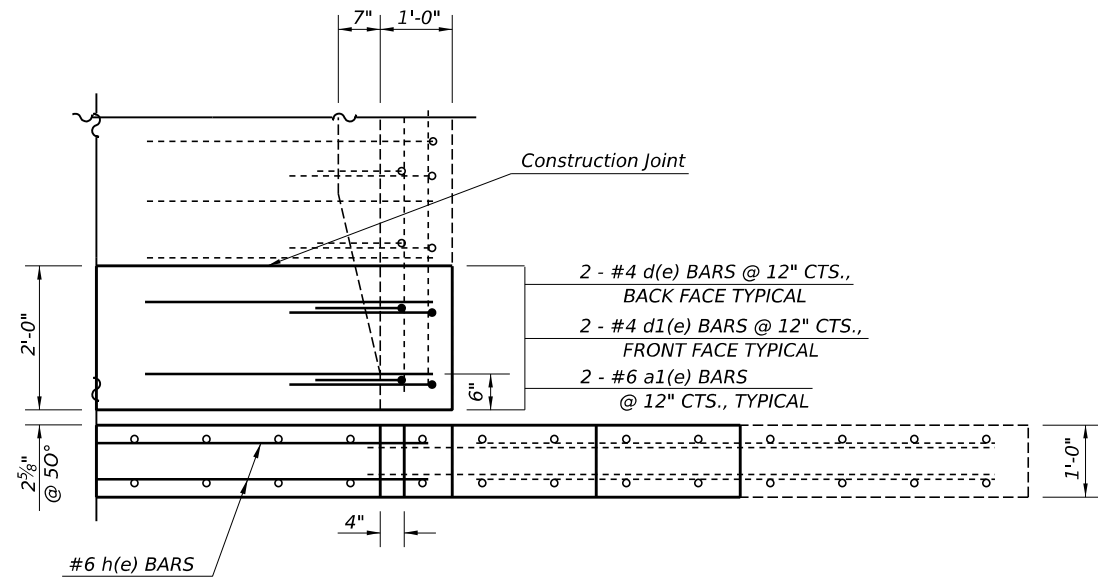
**CONCRETE SUPERSTRUCTURE**  
**S.N. 020-0020**

SCALE:	SHEET 7	OF 15	SHEETS	STA.	TO STA.
--------	---------	-------	--------	------	---------

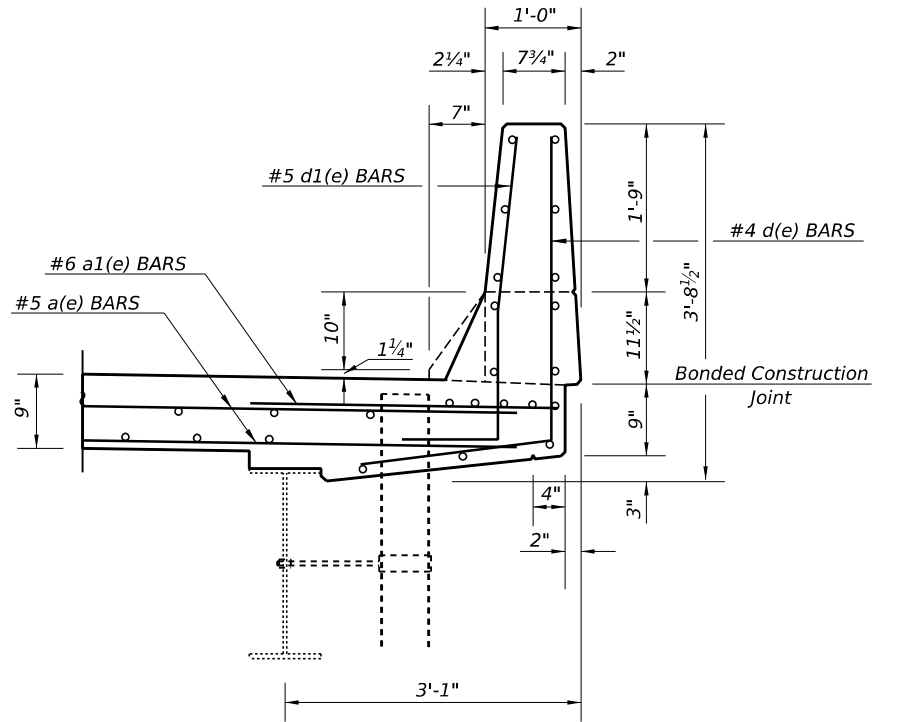
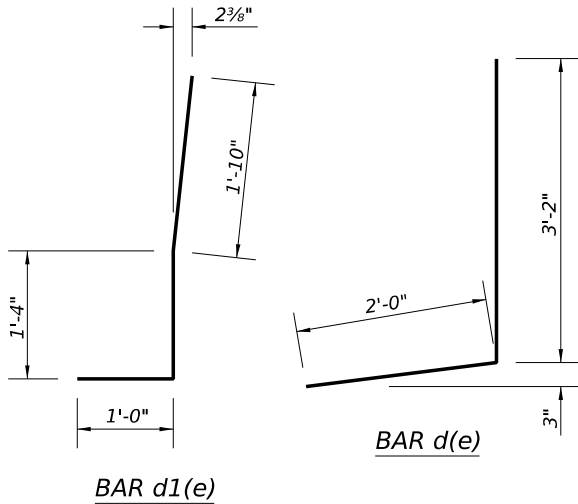
F.A.P RTE.	SECTION	COUNTY	TOTAL SHEETS	SHEET NO.
71	MBPM 2025-1	DEWITT	24	14
		CONTRACT NO. 70H50		
		ILLINOIS	FED. AID PROJECT	

MODEL: Str. Plans 7 [Sheet]  
FILE NAME: c:\pw\_work\pwwidottshawleres\d1031465\d570H50\_Sht-Str.Plans.dgn

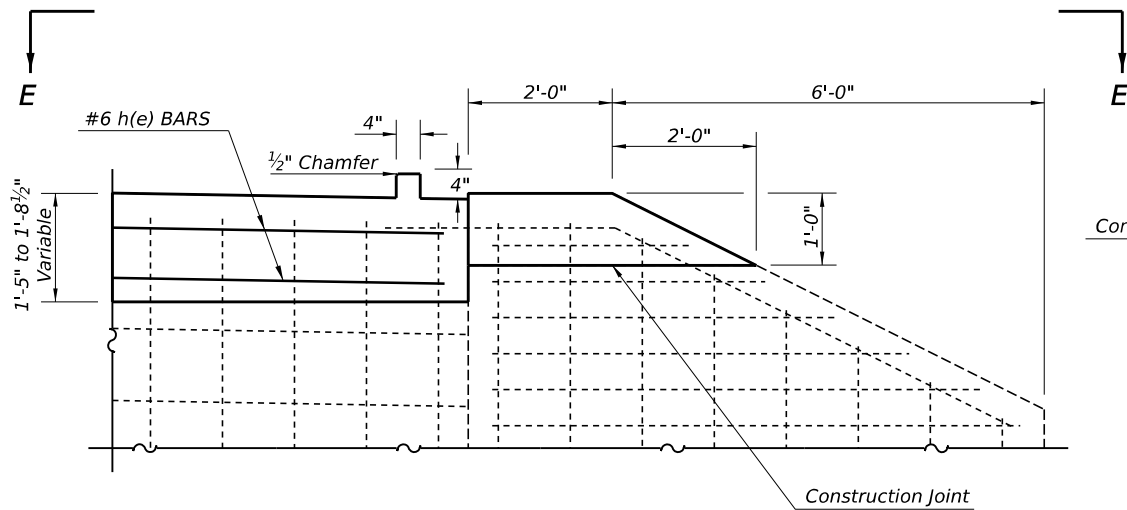
CONCRETE SUPERSTRUCTURE DETAILS  
S.N. 020-0020



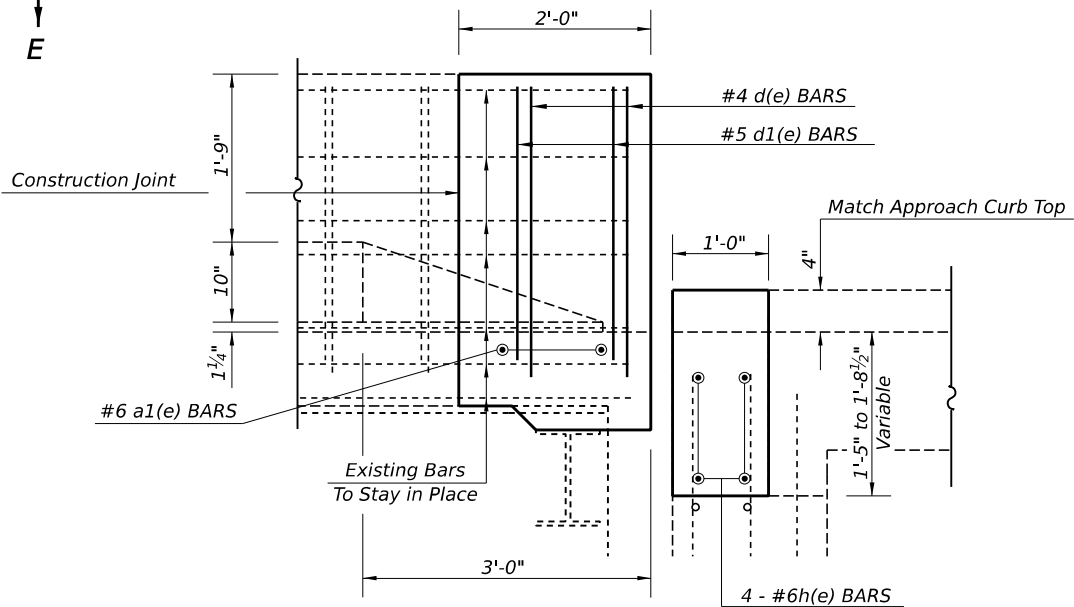
VIEW E-E  
CONCRETE SUPERSTRUCTURE  
ALL WINGWALLS (SIMILAR)



SECTION B-B  
CONCRETE SUPERSTRUCTURE



SECTION D-D  
CONCRETE SUPERSTRUCTURE  
ALL WINGWALLS (SIMILAR)



SECTION C-C  
CONCRETE SUPERSTRUCTURE

BILL OF MATERIALS

BAR	NO.	SIZE	LENGTH	SHAPE
a(e)	32	#5	17'-0"	
a1(e)	8	#6	4'-0"	
h(e)	16	#6	16'-3"	
d(e)	8	#4	5'-2"	
d1(e)	8	#5	4'-2"	
ITEM			UNIT	TOTAL
REINFORCEMENT BARS (EPOXY)			POUND	1,090.0
CONCRETE SUPERSTRUCTURE			CY YD	10.2
BAR SPLICERS			EACH	24.0
PROTECTIVE COAT			SQ YD	25.0

MODEL: Sfr\_Plans 8 (Sheet)  
FILE NAME: c:\pwworking\ericshawleresd\1031465\0570H50\_Sfr\_Sfr\_Plans.dgn

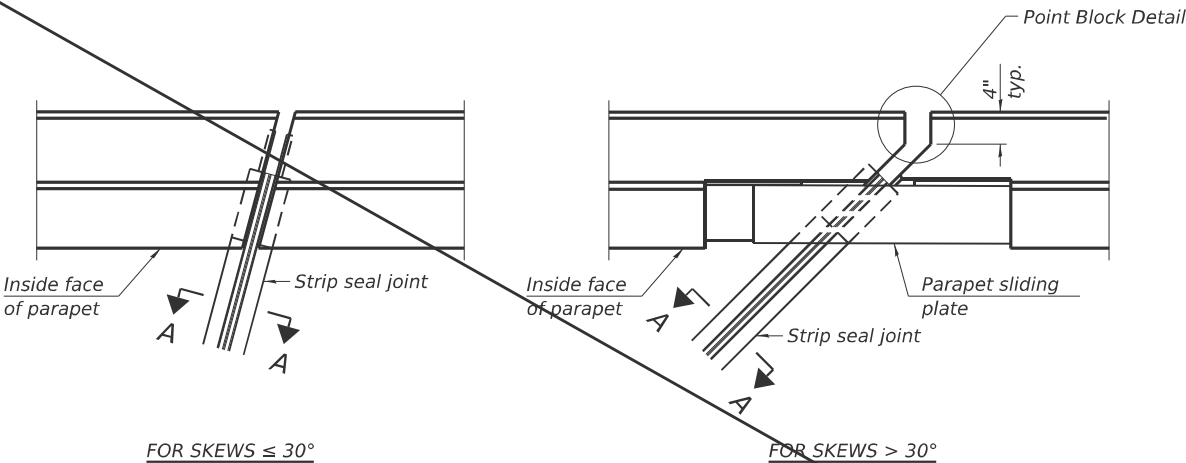
USER NAME = eric.shawler	DESIGNED -	REVISED -
	DRAWN - ESS	REVISED -
	CHECKED - TJB	REVISED -
PLOT DATE = 3/14/2025	DATE -	REVISED -

STATE OF ILLINOIS  
DEPARTMENT OF TRANSPORTATION

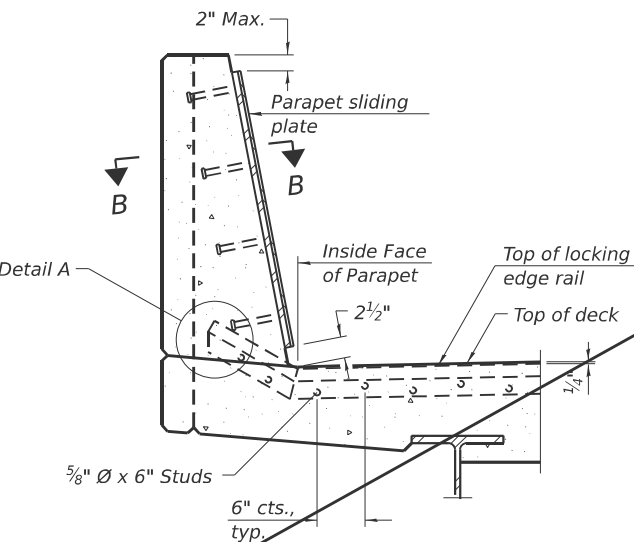
CONCRETE SUPERSTRUCTURE DETAILS  
S.N. 020-0020

SCALE: SHEET 8 OF 15 SHEETS STA. TO STA.

F.A.P RTE.	SECTION	COUNTY	TOTAL SHEETS	SHEET NO.
71	MBPM 2025-1	DEWITT	24	15
CONTRACT NO. 70H50				
ILLINOIS FED. AID PROJECT				



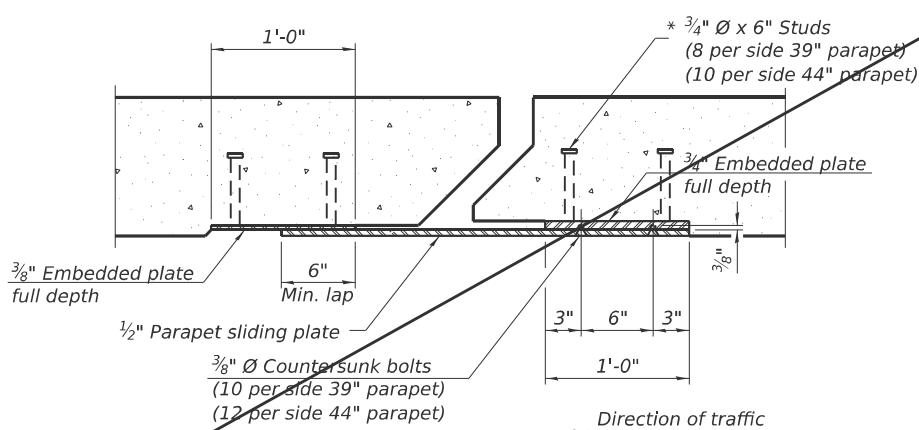
PLAN AT PARAPET



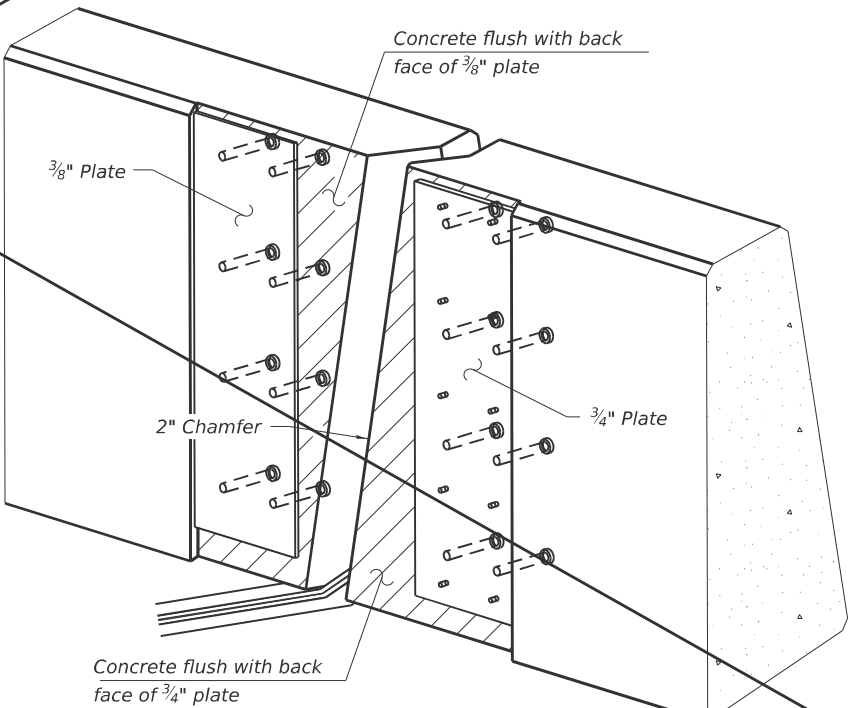
SECTION AT PARAPET

(Skews > 30° shown. Skews ≤ 30° similar except as shown in plan view.)

DETAIL A

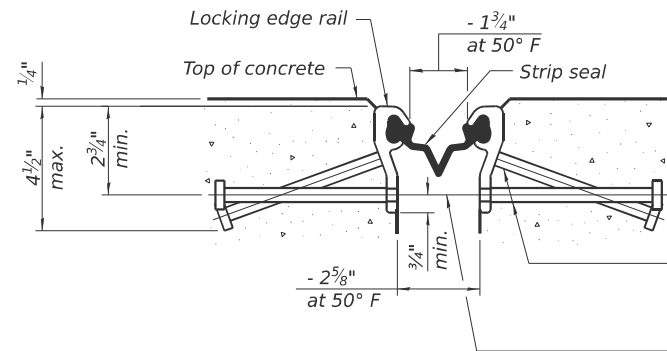


SECTION B-B



TRIMETRIC VIEW

(Showing embedded plates only)



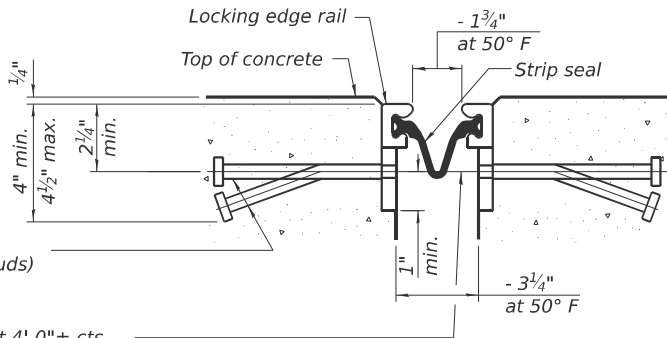
SHOWING ROLLED RAIL JOINT

\* 5/8" Ø x 6" studs @ 6" cts. (alternate angled/bent studs with horizontal studs)

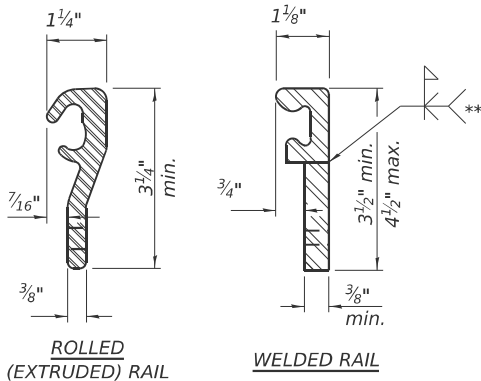
3/8" Ø threaded rods in 7/16" Ø holes at 4'-0" ± cts. for holding the proper joint opening based on the temperature during the deck pour. Place to miss studs. All rods shall be burned, or sawed off flush with the plates after concrete is set.

SECTION A-A

\* Granular or solid flux filled headed studs conforming to Article 1006.32 of the Std. Specs., automatically end welded.

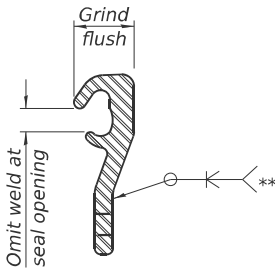


SHOWING WELDED RAIL JOINT



LOCKING EDGE RAILS

\*\* Back gouge not required if complete joint penetration is verified by mock-up.



LOCKING EDGE RAIL SPLICE

The inside of the locking edge rail groove shall be free of weld residue. Rolled rail shown, welded rail similar.

BILL OF MATERIAL

Item	Unit	Total
Preformed Joint Strip Seal	Foot	77.0

Notes:

The strip seal shall be made continuous and shall have a minimum thickness of 1/4". The configuration of the strip seal shall match the configuration of the locking edge rails. Open or "webbed" strip seal gland configurations are not permitted. The gland shall be sized for a maximum rated movement of 4 inches.

The locking edge rails depicted are configured for typical applications and are conceptual only. The actual configuration of the locking edge rails and matching strip seal may vary from manufacturer to manufacturer provided they fit the application and meet the minimum anchorage shown. Flanged edge rails, however, will not be allowed. Locking edge rails may exceed the 4 1/2" maximum depth provided the anchorage system is revised according to the manufacturer's recommendation.

The manufacturer's recommended installation methods shall be followed.

All steel components shall be galvanized after fabrication according to Article 520.03 of the Standard Specifications.

The Maximum space between locking edge rail segments shall be 1" and sealed with a suitable sealant; however, any rail joint within 10' measured perpendicular to the face of the curb or parapet shall be welded as shown in the locking edge rail splice detail.

Cost of parapet sliding plates, embedded plates, and anchorage studs included with Preformed Joint Strip Seal.

39" constant slope barrier shown, 44" constant slope barrier similar as noted.

The concrete opening below the strip seal will vary based on the locking edge rail chosen by the Contractor. Deck and parapet lengths shown elsewhere in the plans are dimensioned to the concrete opening, not the joint opening, and are based on the rolled locking edge rail. If the Contractor elects to use a different locking edge rail, dimensional adjustments may be required. One exception to this would be the strip seal joint at the end of the precast bridge approach slab. For these cases the pavement connector length shall be adjusted, not the length of the bridge approach slab.

MODEL: Str. Plans 9 (Sheet)  
FILE NAME: c:\pwworking\shawleresd\1031465\05070H50\_Sht-Str.Plans.dgn

EJ-SS

5-15-2023

USER NAME = eric.shawler	DESIGNED -	REVISED -
	DRAWN - ESS	REVISED -
	CHECKED - TJB	REVISED -
PLOT DATE = 1/8/2025	DATE -	REVISED -

STATE OF ILLINOIS  
DEPARTMENT OF TRANSPORTATION

PREFORMED JOINT STRIP SEAL  
S.N. 020-0020

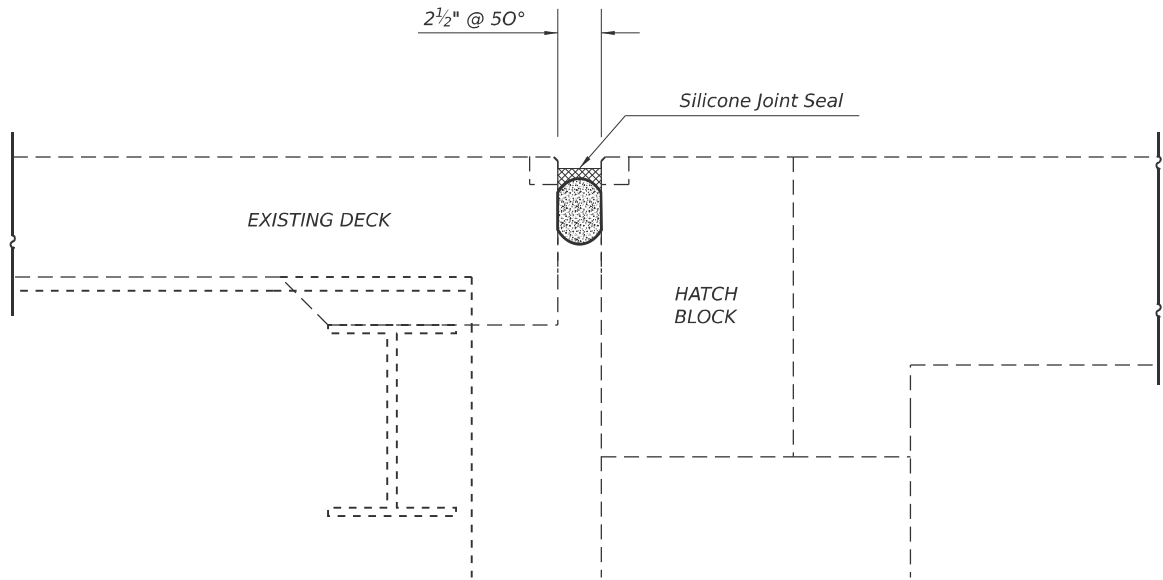
SCALE: SHEET 9 OF 15 SHEETS STA. TO STA.

F.A.P RTE.	SECTION	COUNTY	TOTAL SHEETS	SHEET NO.
71	MBPM 2025-1	DEWITT	24	16
CONTRACT NO. 70H50				
ILLINOIS FED. AID PROJECT				

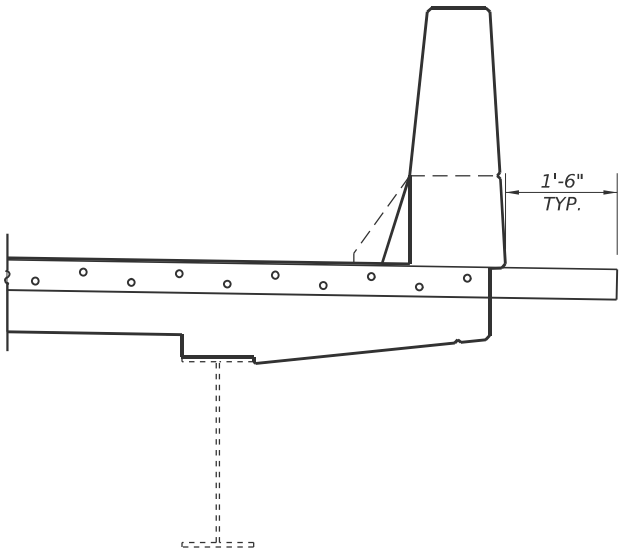


MODEL: Str\_Plans 10 [Sheet]  
FILE NAME: c:\p\work\jw\idishawleresd1031465\0570H50\_Str\_Plans.dgn

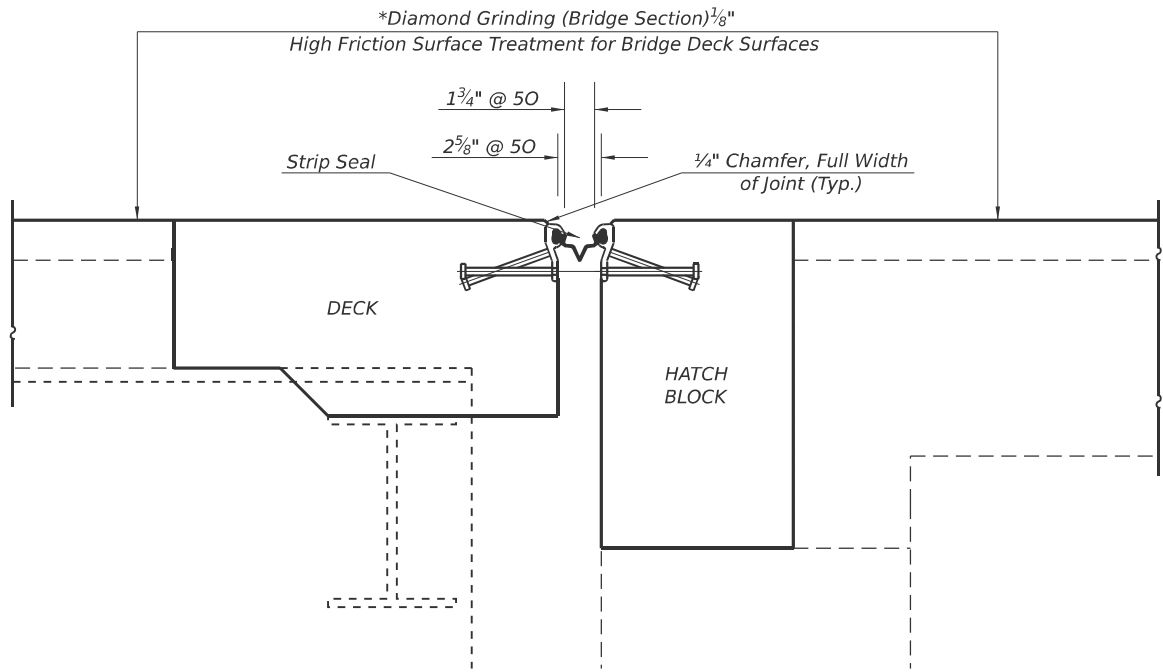
JOINT DETAILS  
S.N. 020-0020



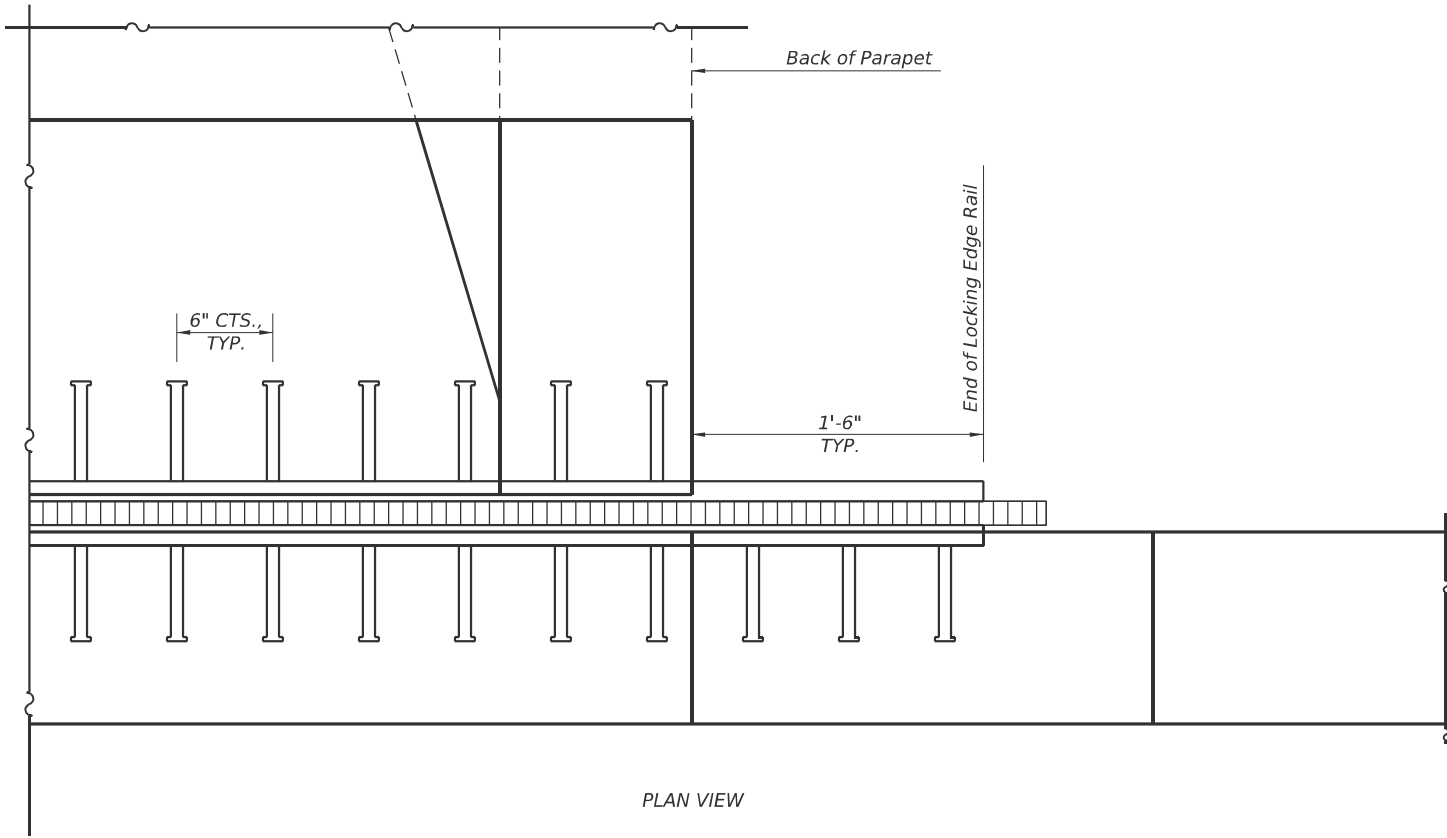
SECTION AT EXISTING JOINT



SECTION AT PROPOSED JOINT  
DECK END



SECTION AT PROPOSED JOINT



PLAN VIEW



STRIP SEAL

PROPOSED JOINTS  
ALL JOINTS SIMILAR

	USER NAME = eric.shawler	DESIGNED -	REVISED -	STATE OF ILLINOIS DEPARTMENT OF TRANSPORTATION	JOINT DETAILS S.N. 020-0020			F.A.P. RTE.	SECTION	COUNTY	TOTAL SHEETS	SHEET NO.
		DRAWN - ESS	REVISED -					71	MBPM 2025-1	DEWITT	24	17
		CHECKED - TJB	REVISED -					CONTRACT NO. 70H50				
	PLOT DATE = 1/8/2025	DATE -	REVISED -					ILLINOIS FED. AID PROJECT				
SCALE:		SHEET 10 OF 15 SHEETS		STA.		TO STA.						

MODEL: Sfr\_Plans 11 [Sheet]  
FILE NAME: c:\p\work\jwids\shawleresd\1031465\0570H50\_Sfr-Sfr\_Plans.dgn

BSD-1

5-15-2023

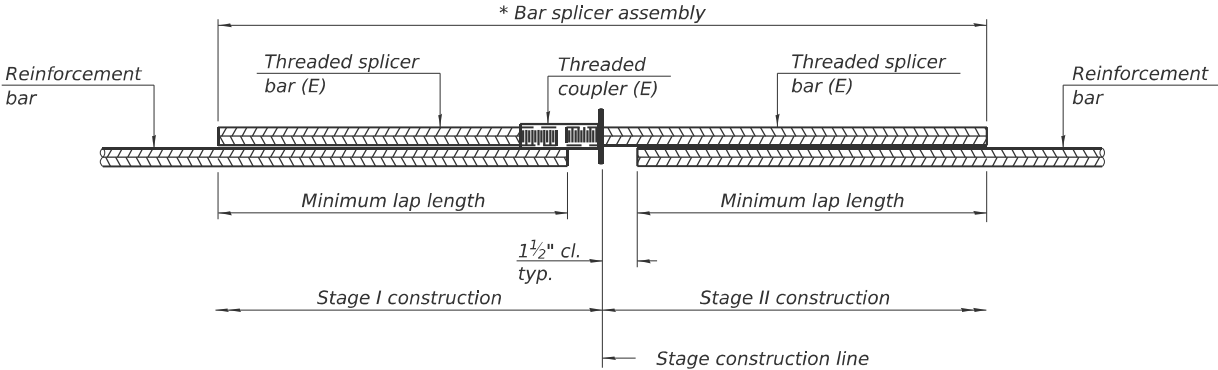
USER NAME = eric.shawler	DESIGNED -	REVISED -
	DRAWN -	REVISED -
	CHECKED -	REVISED -
PLOT DATE = 1/8/2025	DATE -	REVISED -

STATE OF ILLINOIS  
DEPARTMENT OF TRANSPORTATION

BAR SPLICERS  
S.N. 020-0020

SCALE: SHEET 11 OF 15 SHEETS STA. TO STA.

F.A.P RTE.	SECTION	COUNTY	TOTAL SHEETS	SHEET NO.
71	MBPM 2025-1	DEWITT	24	18
CONTRACT NO. 70H50				
ILLINOIS FED. AID PROJECT				



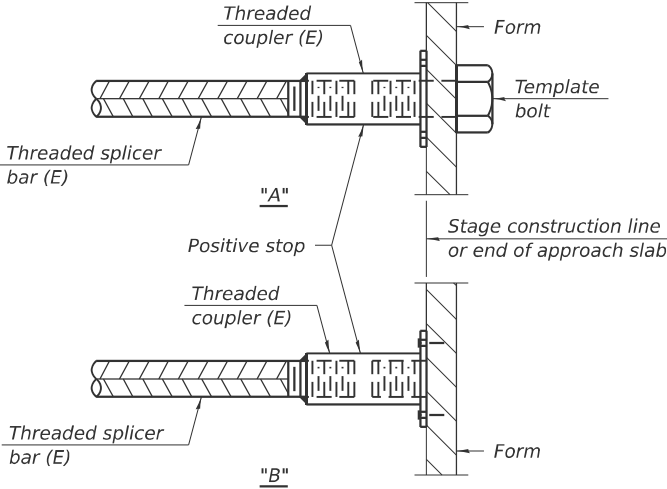
**STANDARD BAR SPLICER ASSEMBLY PLAN**

Only bar splicer assemblies as presented on the approved QPL list may be used.

Threaded splicer bar length = min. lap length + 1½" + thread length

\* Epoxy not required on Bar Splicer Assembly components used in conjunction with black bars.

Location	Bar size	No. assemblies required	Minimum lap length
HATCH BLOCK	#4	8	3'-5"
DECK END	#5	16	2'-5"

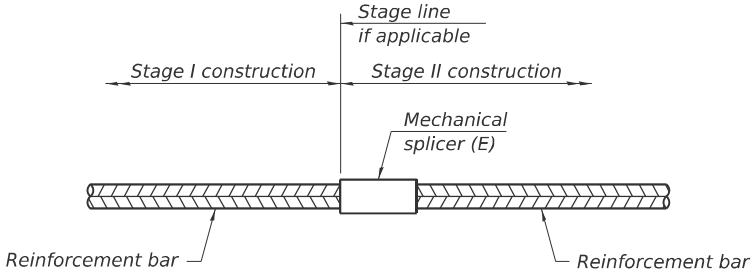


**INSTALLATION AND SETTING METHODS**

"A" : Set bar splicer assembly by means of a template bolt.

"B" : Set bar splicer assembly by nailing to wood forms or cementing to steel forms.

(E) : Indicates epoxy coating.



**STANDARD MECHANICAL SPLICER**

Location	Bar size	No. assemblies required

Notes:  
Splicer bars shall be deformed with threaded ends and have a minimum 60 ksi yield strength.  
All reinforcement shall be lapped and tied to the splicer bars.  
Bar splicer assemblies shall be epoxy coated according to the requirements for reinforcement bars. See Section 508 of the Standard Specifications.  
See approved list of bar splicer assemblies and mechanical splicers for alternatives.

NOTES

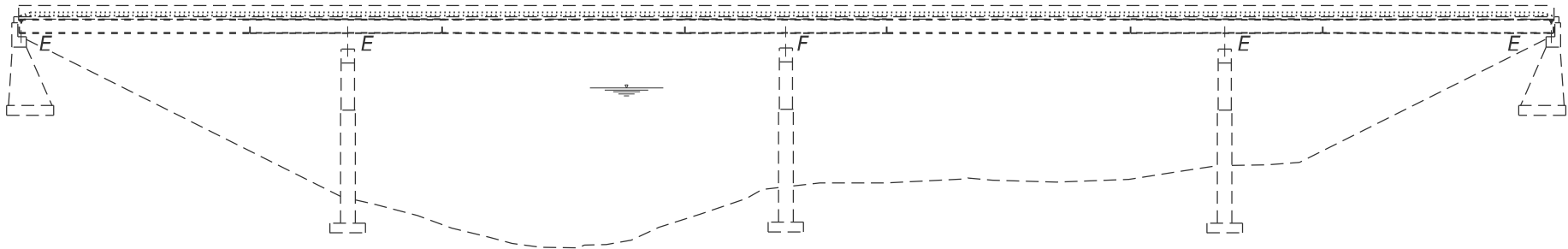
All structural steel shall be AASHTO M 270 Grade 50.  
Fasteners shall be ASTM A325 Type 1, mechanically galvanized bolts.  
Bolts 7/8"Ø, holes 15/16"Ø, unless otherwise noted.

Plan dimensions and details relative to existing plans are subject to nominal construction variations. The Contractor shall field verify existing dimensions and details affecting new construction and make necessary approved adjustments prior to construction or ordering of materials. Such variations shall not be cause for additional compensation for a change in scope of the work, however, the Contractor will be paid for the quantity actually furnished at the unit price bid for the work.

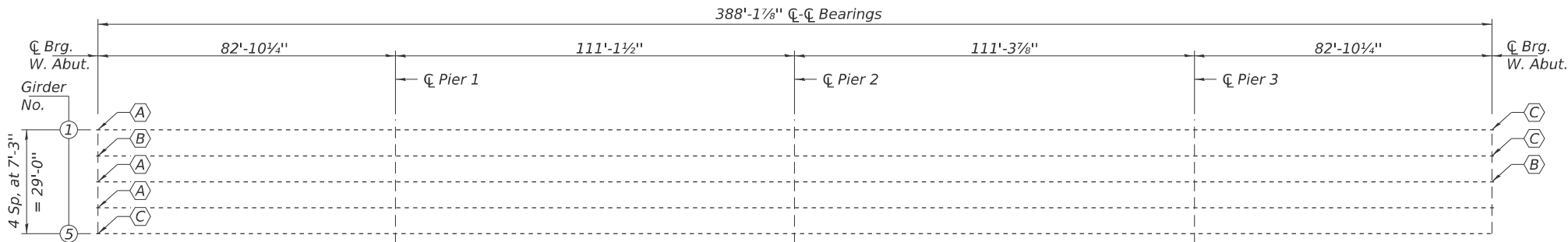
The existing structural steel coating contains lead. The Contractor shall take appropriate precautions to deal with the presence of lead on this project.

Existing structural steel that will be in contact with new structural steel shall be cleaned and painted prior to erection as required by the GBSP "Cleaning and Painting Contact Surface Areas of Existing Steel Structures".

All structural steel shall be galvanized. Cost included with Structural Steel Repair or Furnishing and Erecting Structural Steel.



ELEVATION



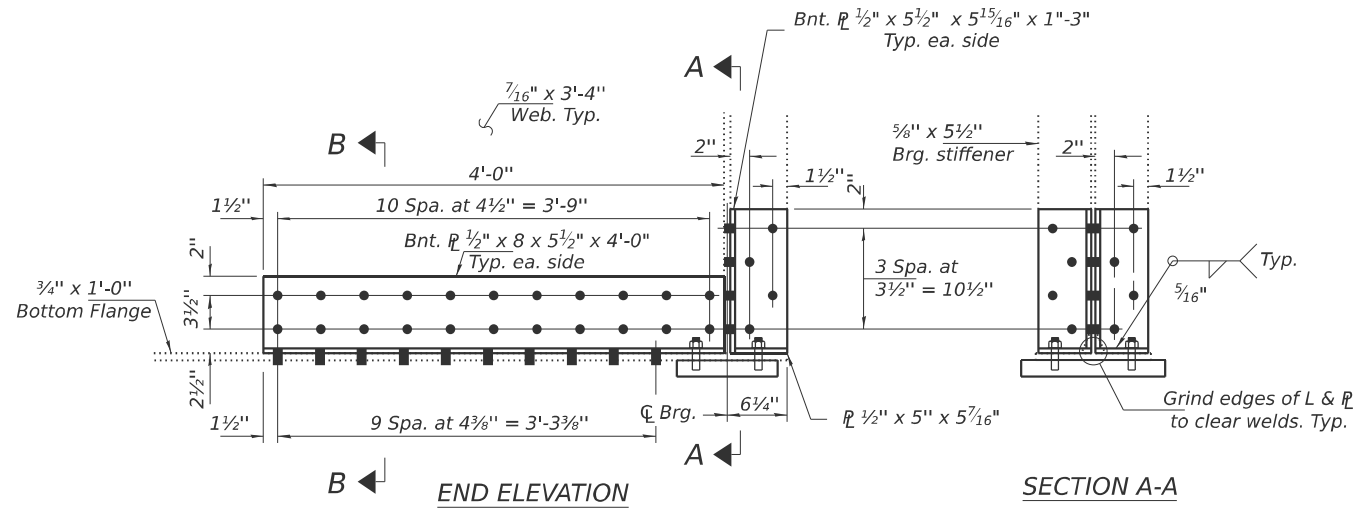
PLAN

- (A) - Girder end repair (4'-0")
- (B) - Girder end repair (3'-0")
- (C) - Girder end repair (2'-0")

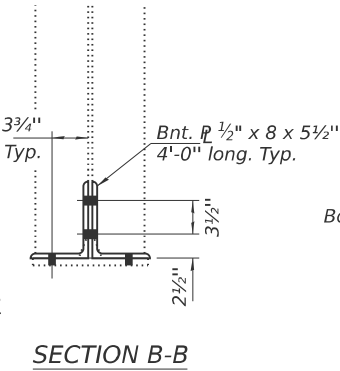
MODEL: Str\_Plans 12 [Sheet]  
FILE NAME: c:\p\work\ericshawleresd1031465\0570H50\_Str\_Plans.dgn

	USER NAME = eric.shawler		DESIGNED -	REVISED -	STATE OF ILLINOIS DEPARTMENT OF TRANSPORTATION	GIRDER REPAIRS S.N. 020-0020		F.A.P RTE.	SECTION	COUNTY	TOTAL SHEETS	SHEET NO.
			DRAWN - ESS	REVISED -				71	MBPM 2025-1	DEWITT	24	19
			CHECKED - TJB	REVISED -				CONTRACT NO. 70H50				
	PLOT DATE = 1/8/2025		DATE -	REVISED -		SCALE:	SHEET 12 OF 15 SHEETS	STA.	TO STA.	ILLINOIS FED. AID PROJECT		

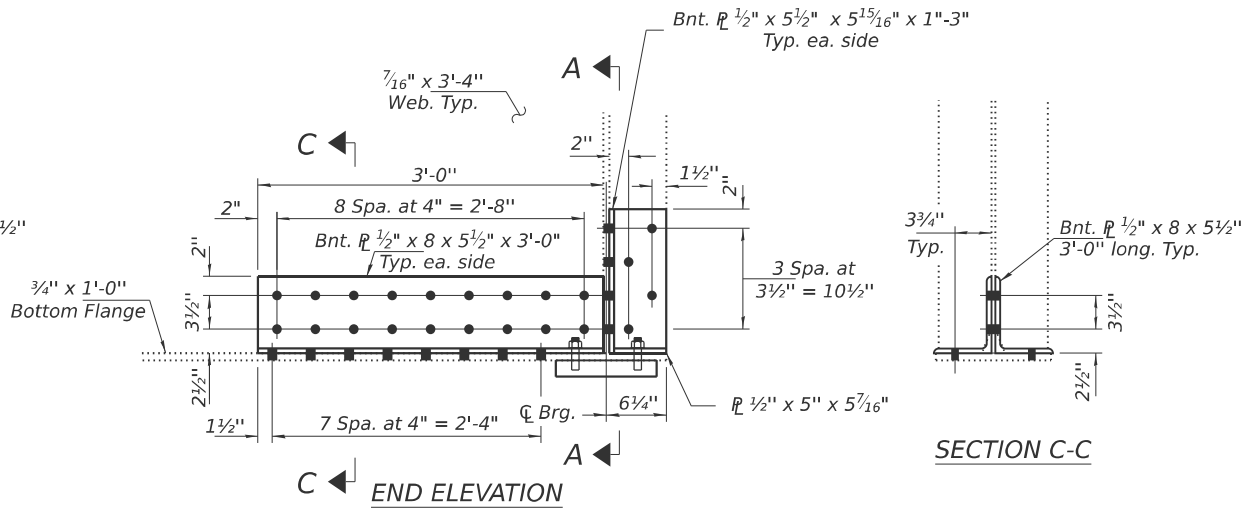
MODEL: Str. Plans 13 [Sheet]  
FILE NAME: c:\p\work\jshawleresd1031465\0570H50\_Str.Stl.Plans.dgn



REPAIR A

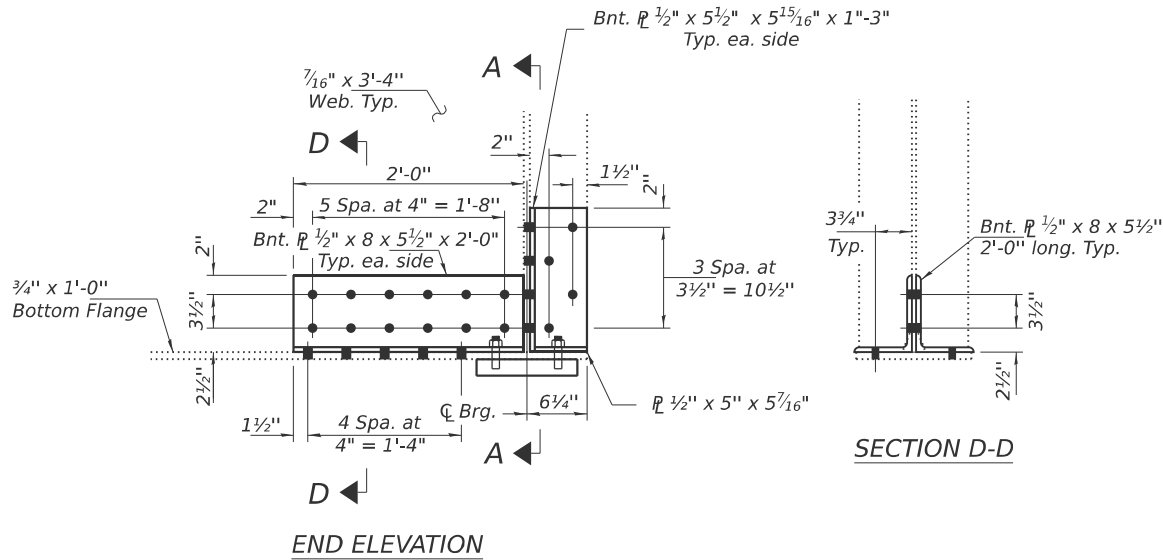


SECTION B-B



REPAIR B

- Use holes in new steel as template for drilling holes in existing steel.
- Use holes in existing steel as template for drilling holes in new steel.



REPAIR C

BILL OF MATERIALS

ITEM	UNIT	TOTAL
STRUCTURAL STEEL REPAIR	POUND	1,860.0

USER NAME = eric.shawler	DESIGNED -	REVISED -
	DRAWN - ESS	REVISED -
	CHECKED - TJB	REVISED -
PLOT DATE = 1/9/2025	DATE -	REVISED -

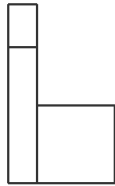
STATE OF ILLINOIS  
DEPARTMENT OF TRANSPORTATION

GIRDER REPAIR DETAILS  
S.N. 020-0020

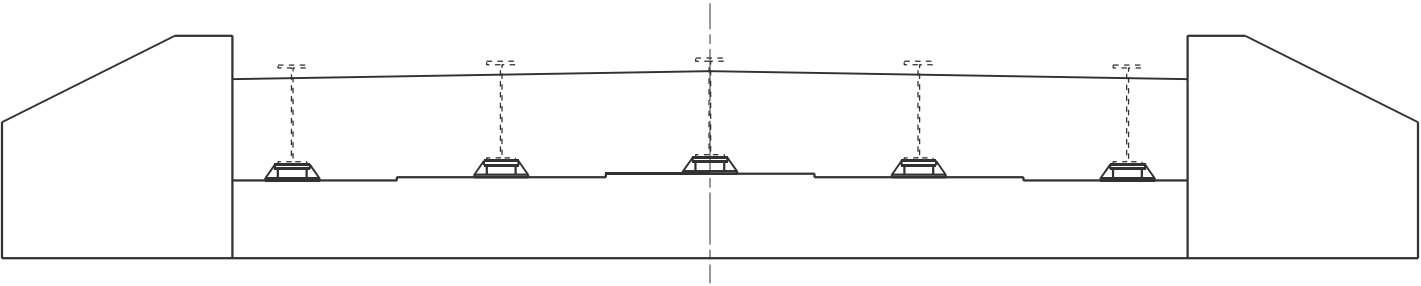
SCALE: SHEET 13 OF 15 SHEETS STA. TO STA.

F.A.P RTE.	SECTION	COUNTY	TOTAL SHEETS	SHEET NO.
71	MBPM 2025-1	DEWITT	24	20
CONTRACT NO. 70H50				
ILLINOIS FED. AID PROJECT				

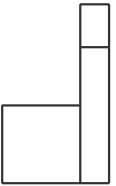
STRUCTURAL REPAIR OF CONCRETE  
S.N. 020-0020



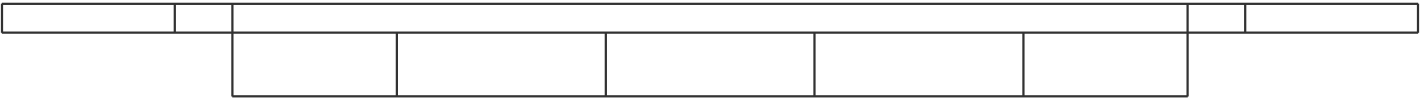
ABUTMENT  
SIDE VIEW



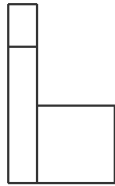
WEST ABUTMENT  
NO REPAIRS NEEDED



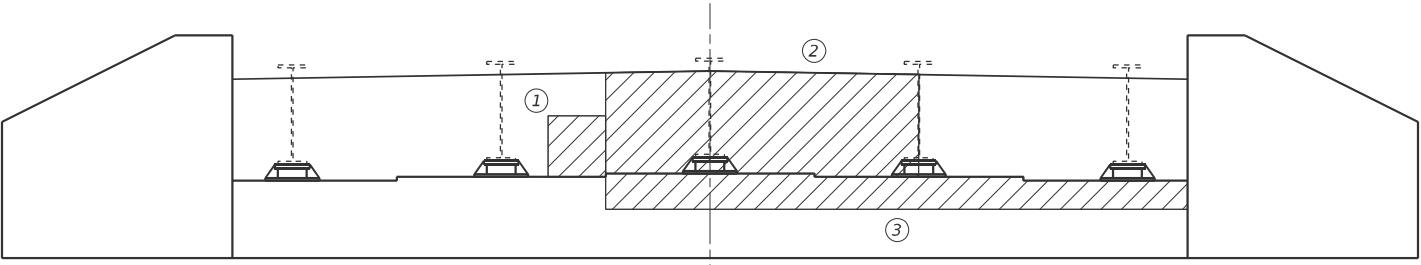
ABUTMENT  
SIDE VIEW



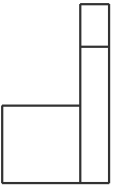
CAP PLAN VIEW



ABUTMENT  
SIDE VIEW



EAST ABUTMENT



ABUTMENT  
SIDE VIEW



CAP PLAN VIEW

PATCH NO.	SIZE		PATCH NO.	SIZE		PATCH NO.	SIZE	
	L. FT. * W. FT.	SQ FT		L. FT. * W. FT.	SQ FT		L. FT. * W. FT.	SQ FT
1	2.0 X 2.0	4.0						
2	10.75 X 3.50	37.6						
3	20.0 X 1.0	20.0						
4	20.0 X 0.50	10.0						

NOTE  
SEE SPECIAL PROVISION FOR STRUCTURAL REPAIR OF CONCRETE.

LEGEND



STRUCTURAL REPAIR OF CONCRETE  
(DEPTH = TO < 5 INCHES)

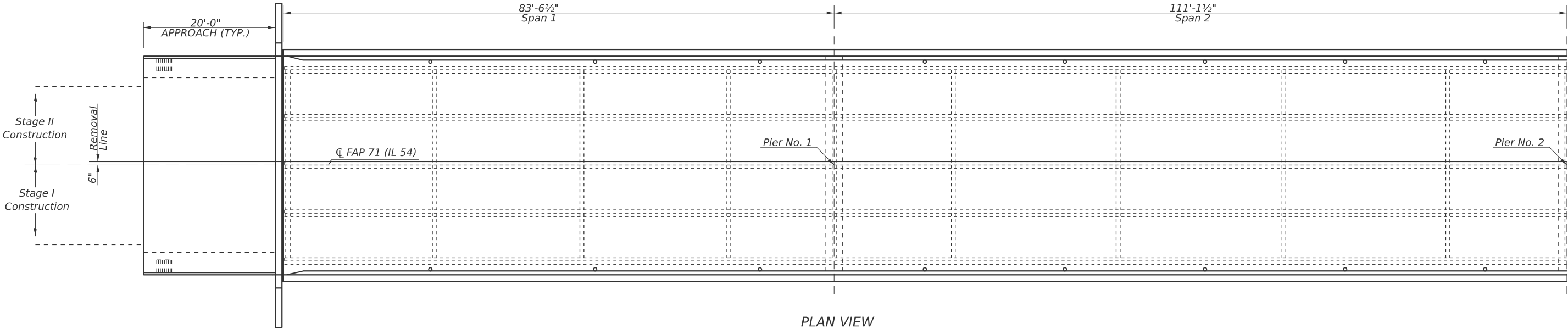
BILL OF MATERIALS

ITEM	UNIT	TOTAL
STRUCTURAL REPAIR OF CONCRETE (DEPTH = TO < 5 INCHES)	SQ FT	71.6

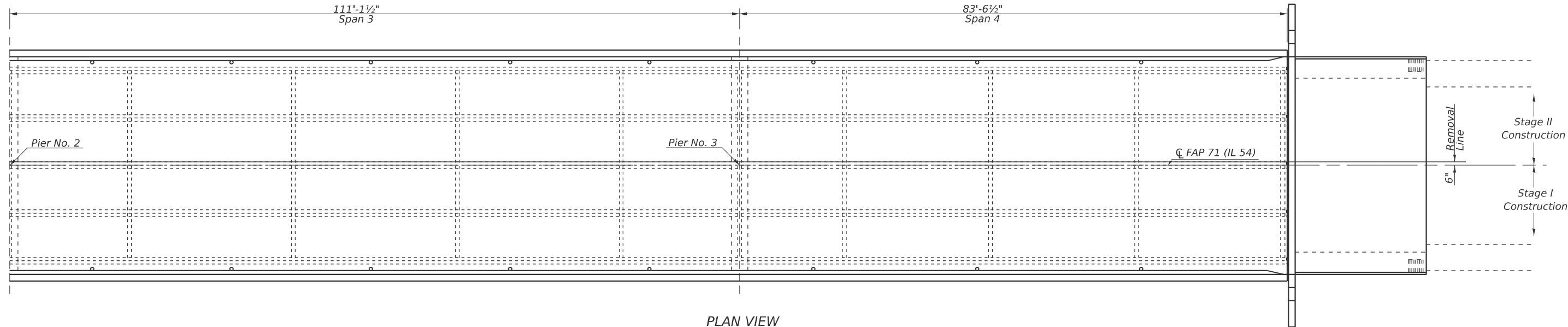
MODEL: Str\_Plans 14 [Sheet]  
FILE NAME: c:\p\p\work\p\shawleresd1031465\0570H50\_Str\_Plans.dgn

	USER NAME = eric.shawler	DESIGNED -	REVISED -	STATE OF ILLINOIS DEPARTMENT OF TRANSPORTATION	STRUCTURAL REPAIR OF CONCRETE S.N. 020-0020				F.A.P RTE.	SECTION	COUNTY	TOTAL SHEETS	SHEET NO.
		DRAWN - ESS	REVISED -		71	MBPM 2025-1	DEWITT	24	21				
		CHECKED - TJB	REVISED -		CONTRACT NO. 70H50								
	PLOT DATE = 1/8/2025	DATE -	REVISED -		SCALE:	SHEET 14	OF 15	SHEETS	STA.	TO STA.			

BRIDGE DECK PATCHING  
S.N. 020-0020



PLAN VIEW  
SPANS ONE & TWO



PLAN VIEW  
SPANS THREE & FOUR

NOTE

AN ESTIMATED 1 PERCENT OF THE DECK AREA IS INCLUDED SHOULD ADDITIONAL DECK SLAB REPAIR (PARTIAL) OR APPROACH SLAB REPAIR (PARTIAL DEPTH) BE REQUIRED AFTER DIAMOND GRINDING (BRIDGE SECTION).

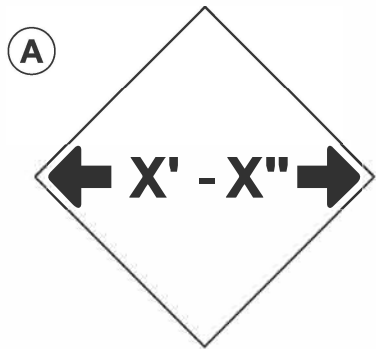
THE ACTUAL SIZE AND LOCATION OF PATCHING SHALL BE DETERMINED BY THE ENGINEER. THE ENGINEER SHALL SHOW THE ACTUAL LOCATIONS OF THE DECK REPAIRS ON THIS SHEET.

BILL OF MATERIALS

ITEM	UNIT	TOTAL
DECK SLAB REPAIR (PARTIAL DEPTH)	SQ YD	14.0
APPROACH SLAB REPAIR (PARTIAL DEPTH)	SQ YD	2.0

MODEL: Str\_Plans 15 [Sheet]  
FILE NAME: c:\p\work\ericshawleresd1031465\0570H50\_Str-Str\_Plans.dgn

	USER NAME = eric.shawler			DESIGNED -	REVISED -	STATE OF ILLINOIS DEPARTMENT OF TRANSPORTATION	BRIDGE DECK PATCHING S.N. 020-0020			F.A.P RTE.	SECTION	COUNTY	TOTAL SHEETS	SHEET NO.
				DRAWN - ESS	REVISED -					71	MBPM 2025-1	DEWITT	24	22
				CHECKED - TJB	REVISED -					CONTRACT NO. 70H50				
	PLOT DATE = 1/8/2025			DATE -	REVISED -		SCALE:	SHEET 15	OF 15 SHEETS	STA.	TO STA.	ILLINOIS FED. AID PROJECT		



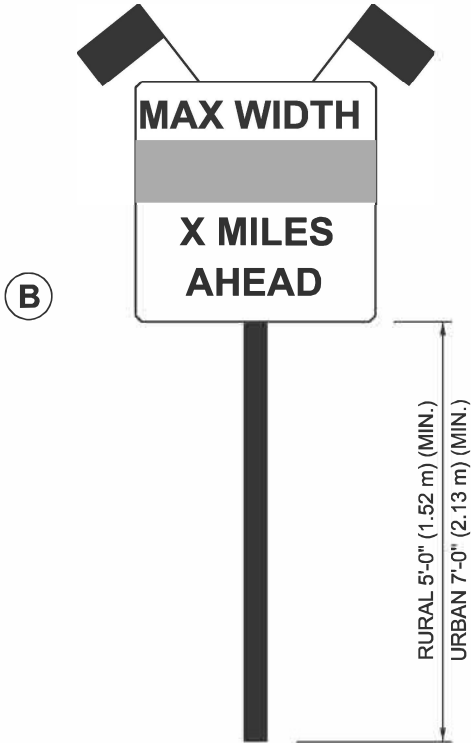
W12-2(O)-48"x48"(1200x1200)

SIGN (A) 2 SIGNS - W12-2(O)-48"x48"(1200x1200) ARE TO BE PLACED AS SHOWN IN THE PLANS OR AS DIRECTED BY THE ENGINEER.

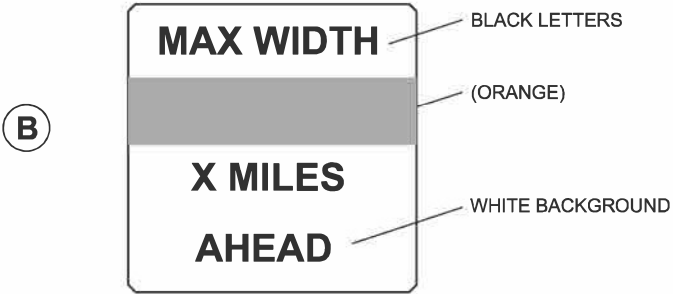


STAGE WIDTH

STAGE 1 WIDTH = 12'-6" ACTUAL; 11'-0" POSTED (REQUIRED)  
STAGE 2 WIDTH = 12'-6" ACTUAL; 11'-0" POSTED (REQUIRED)



SIGN PANEL, TYPE II



W12-I103(O)-48"x48"(1200x1200)  
"D" LETTERS/NUMBERS

GENERAL NOTES

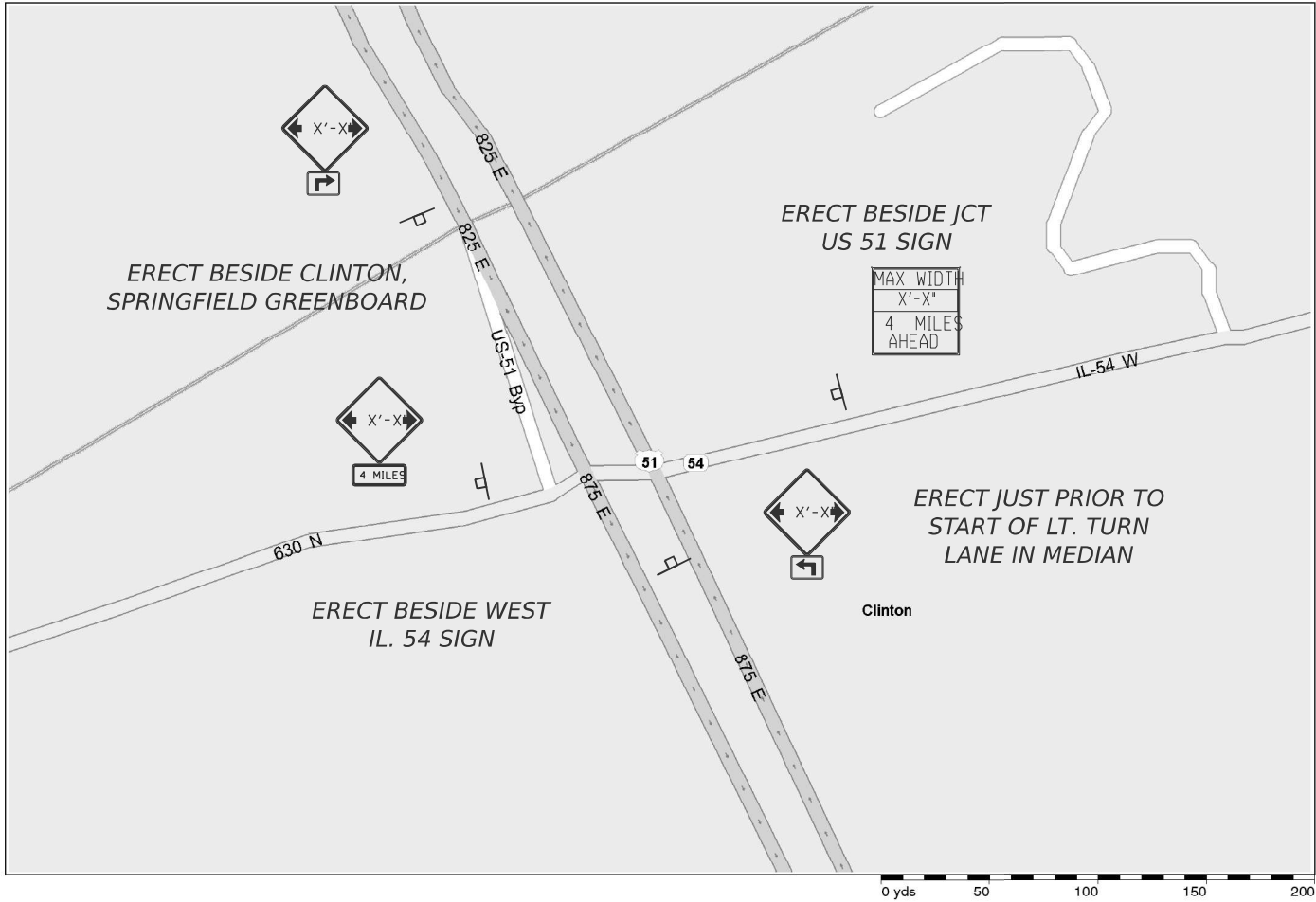
1. ALL TRAFFIC CONTROL DEVICES SHALL BE FURNISHED, ERECTED AND MAINTAINED BY THE CONTRACTOR.
2. ALL (B) SIGNS SHALL HAVE FLAGS INSTALLED UNLESS OTHERWISE DIRECTED.
3. LOCATIONS OF TRAFFIC CONTROL DEVICES MAY BE ADJUSTED BY THE ENGINEER.
4. ALL TRAFFIC CONTROL SHOWN ON THIS SHEET SHALL BE PAID FOR AT THE CONTRACT LUMP SUM PRICE FOR WIDTH RESTRICTION SIGNING.
5. ALL SIGNS SHALL BE POST MOUNTED UNLESS OTHERWISE DIRECTED.
6. ALL SIGNS SHOWN ORANGE (O) SHALL BE FLUORESCENT ORANGE.
7. ALL SIGNS SHOWN SHALL CONSIST OF THE CURRENT RETROREFLECTIVE SHEETING REQUIREMENTS AS OUTLINED IN SECTION 1106.01 OF THE STANDARD SPECIFICATIONS BOOK.

Note: All dimensions are in INCHES (millimeters) unless otherwise shown.

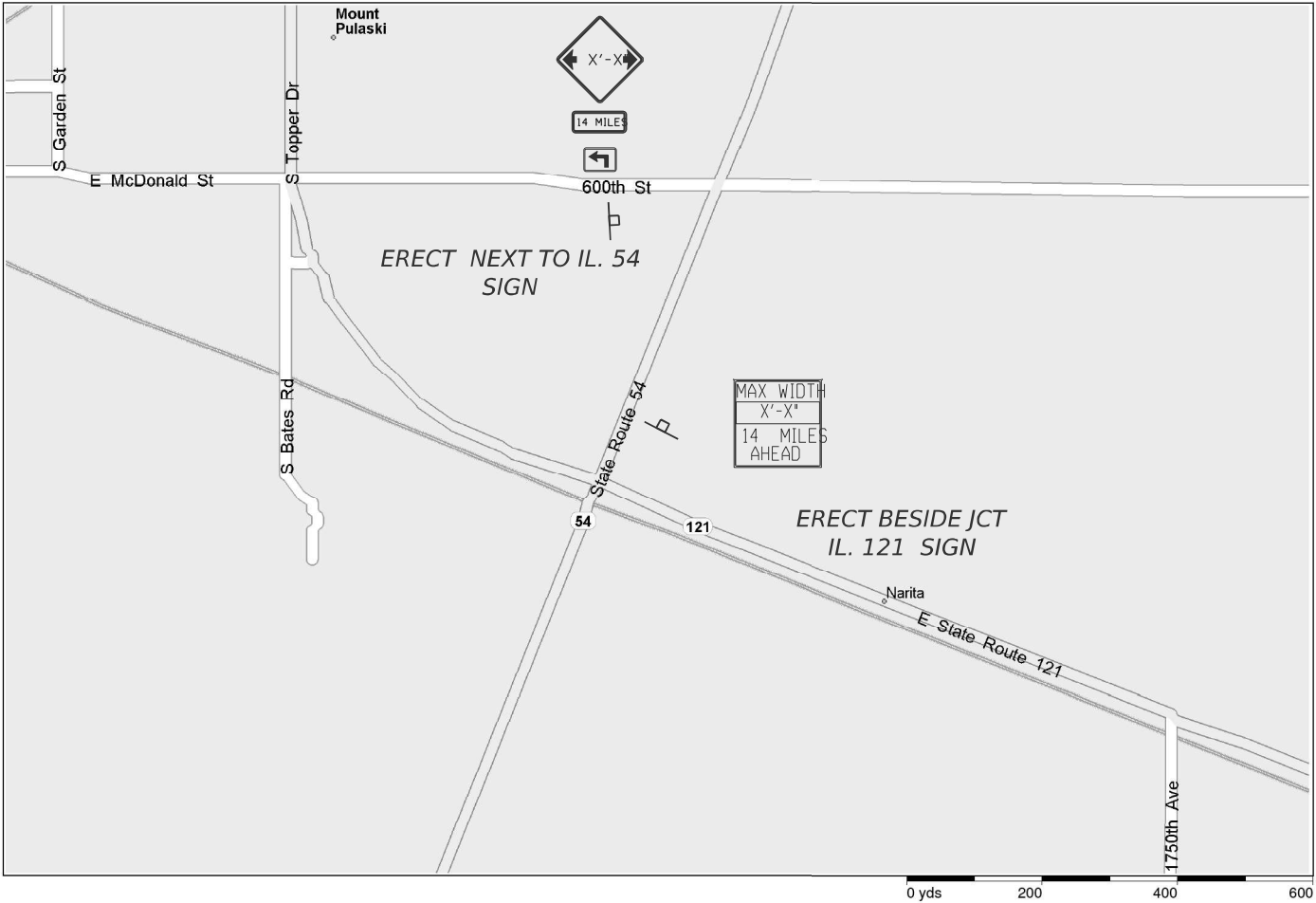
MODEL: X7200201  
FILE NAME: c:\pwwork\pwwork\pwwork\resid\031465\0570H50-Shh-Detail\_X7200201.dgn

										DISTRICT 5 DETAIL NO. X7200201									
USER NAME = eric.shawler		DESIGNED -	REVISED - 05-08/	STATE OF ILLINOIS DEPARTMENT OF TRANSPORTATION				WIDTH RESTRICTION SIGNS					F.A.P RTE.	SECTION	COUNTY	TOTAL SHEETS	SHEET NO.		
		DRAWN -	REVISED - 10-08 KJT					S.N. 020-0020					71	MBPM 2025-1	DEWITT	24	23		
PLOT SCALE = \$SCALE\$		CHECKED -	REVISED - 07-09 KJT										CONTRACT NO. 70H50						
PLOT DATE = 1/8/2025		DATE -	REVISED - 03-11 KJT					SCALE:					SHEET 1	OF 2	SHEETS	STA.	TO STA.		
												ILLINOIS	FED. AID PROJECT						

CLINTON



MT. PULASKI



KENNEY



MODEL: Width Restriction Signing (Sheet)  
FILE NAME: c:\p\work\width\shawler\1031465\0570H50-Sht-Details\_X7200201.dgn

USER NAME = eric.shawler	DESIGNED -	REVISED -
	DRAWN -	REVISED -
	CHECKED -	REVISED -
PLOT DATE = 1/8/2025	DATE -	REVISED -

STATE OF ILLINOIS  
DEPARTMENT OF TRANSPORTATION

WIDTH RESTRICTION SIGN LOCATIONS  
S.N. 020-0020

SCALE: SHEET 2 OF 2 SHEETS STA. TO STA.

F.A.P. RTE.	SECTION	COUNTY	TOTAL SHEETS	SHEET NO.
71	MBPM 2025-1	DEWITT	24	24
CONTRACT NO. 70H50				
ILLINOIS FED. AID PROJECT				